



# ILLUSTRATED PARTS BREAKDOWN

# BA213 ENCLOSURE

## HOW TO USE THE IPB

### GENERAL

This IPB is compiled following the organization and nomenclature of the engineering drawing structure.

### MAJOR ASSEMBLY LOCATOR (When Applicable)

The Major Assembly Locator (first illustration) is an index that provides a description and a figure reference for all illustrations used in this manual.

### INDENTED PARTS LIST

This manual identifies each assembly being broken down (figure reference callout), and all parts of that assembly. Further breakdown of an assembly is shown by an asterisk (\*) preceding the item callouts in the Description Column. The number of asterisks preceding an item is used to denote the subordination of that item with respect to the Major Assembly. A single asterisk preceding an item description indicates that the item is part of the major assembly being illustrated. Items that are subordinate to single asterisks items, are denoted by two asterisks (\*\*) and immediately follow the related single asterisk item. This system of part identification provides a means for the user to identify the next higher assembly item and make alternate selections for parts when the required replacement part of assembly is not immediately available.

### COLUMN CALLOUT DESCRIPTION

**Figure and Item** - Indicates the figure number and item number of each part.

**Description** - Lists the name of the part and pertinent specifications (when required). Asterisks preceding the description denote the subordination of the part to the next higher assembly.

**DEC Part No.** - Lists the Digital part ordering number. A blank in this column indicates a Digital part number was not assigned at the time of publication.

**ECO Cut-In** - The notation at the top of this column indicates the ECO level of the system (option), at which the IPB was initially prepared. Subsequent ECO level designations, that modify existing parts or add new parts to the device, are inserted in the ECO Cut-In column next to the part that is added or modified.

**Used On Code** - Letters in this column correspond to the variation codes assigned in Figure 1. Parts with an Alpha notation(s) are used only in those option variations. A blank indicates that the part is used on all option variations.

**Ref Fig No.** - A cross reference between illustrations. For each Major Assembly, the number in this column denotes the figure of the next higher assembly. For all subassemblies, the number in this column denotes the figure showing additional detailed breakdown.

**PART NUMBER/PART DESCRIPTION INDEX SECTION**  
Parts are indexed both numerically and alphabetically by description, referenced to a location within the IPB, by figure number and item number.

## REVISION HISTORY

PRINTING	ECO LEVEL		DATE	OTHER IPB MANUALS REFERENCED
4th Printing	BA213	00003-00004	17-AUG-90	EK-RD53A-IP EK-RD54A-IP EK-RA70A-IP EK-OTK50-IP EK-TK70A-IP
	70-24227	00002-00008		
	70-24255	00000-00003		
	H7868	00002-00006		
	70-23769	00000-00002		
	70-23999	00000-00001		
	70-23998	00000-00001		
	70-23712	00000-00005		
	70-23366	00000-00001		
	70-24037	00000-00004		
	70-24041	00000-00000		
	70-24046	00001-00002		
	RQDX3-SA	00000-00001		
	RD53A-SA	00000-00001		
	RD54A-SA	00000-00000		
	KDA50-SA	00000-00013		
	RA70E-SA	00000-00001		
	TQK50-SA	00000-00002		
	TK50E-SA	00000-00008		
	TQK70-SA	00000-00002		
	TK70E-SA	00000-00002		
	KFQSA-SA	00002-00002		
	RF30E-SA	00000-00000		
	RF71E-SA	00001-00001		

Digital Equipment Corporation reserves the right, without notice, to make substitutions and modifications in the specifications of products documented in this manual and further reserves the right to withdraw any of these products from the market without notice.

Digital Equipment Corporation is not responsible for errors which may appear in the technical description (including illustrations and photographs) of the products covered by this manual.

None of the descriptions contained in this manual imply the granting of any license whatsoever to make, use or sell equipment constructed in accordance therewith.

**Restricted Rights:** Use, duplication or disclosure by the U.S. Government is subject to restrictions as set forth in subparagraph (c) (1) (ii) of the Rights in Technical Data and Computer Software clause at DFARS 252.227-2713.

Copyright © 1988, 1989, 1990 by Digital Equipment Corporation. All rights reserved.

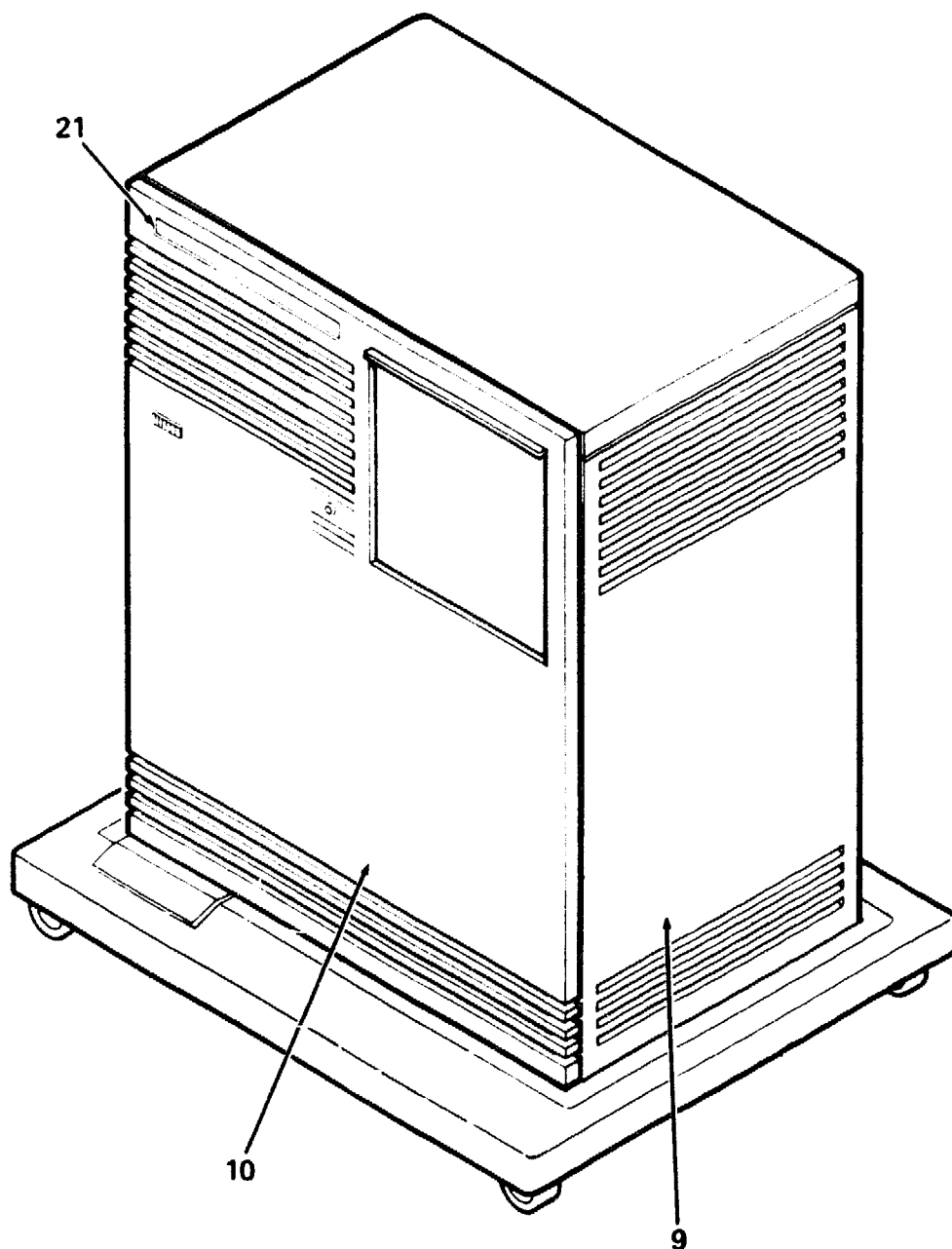
The postage-paid **READER'S COMMENTS** form on the last page of this document requests your critical evaluation to assist us in preparing future documentation.

The following are trademarks of Digital Equipment Corporation :

---

The logo consists of the word "digital" in a lowercase, sans-serif font, with a small "TM" trademark symbol to its upper right. The text is white and set against a solid black rectangular background.

DEC  
DECUS  
PDP  
RA70  
RD53  
RD54  
RF30  
RF71  
TK50  
TK70  
UNIBUS  
VAX

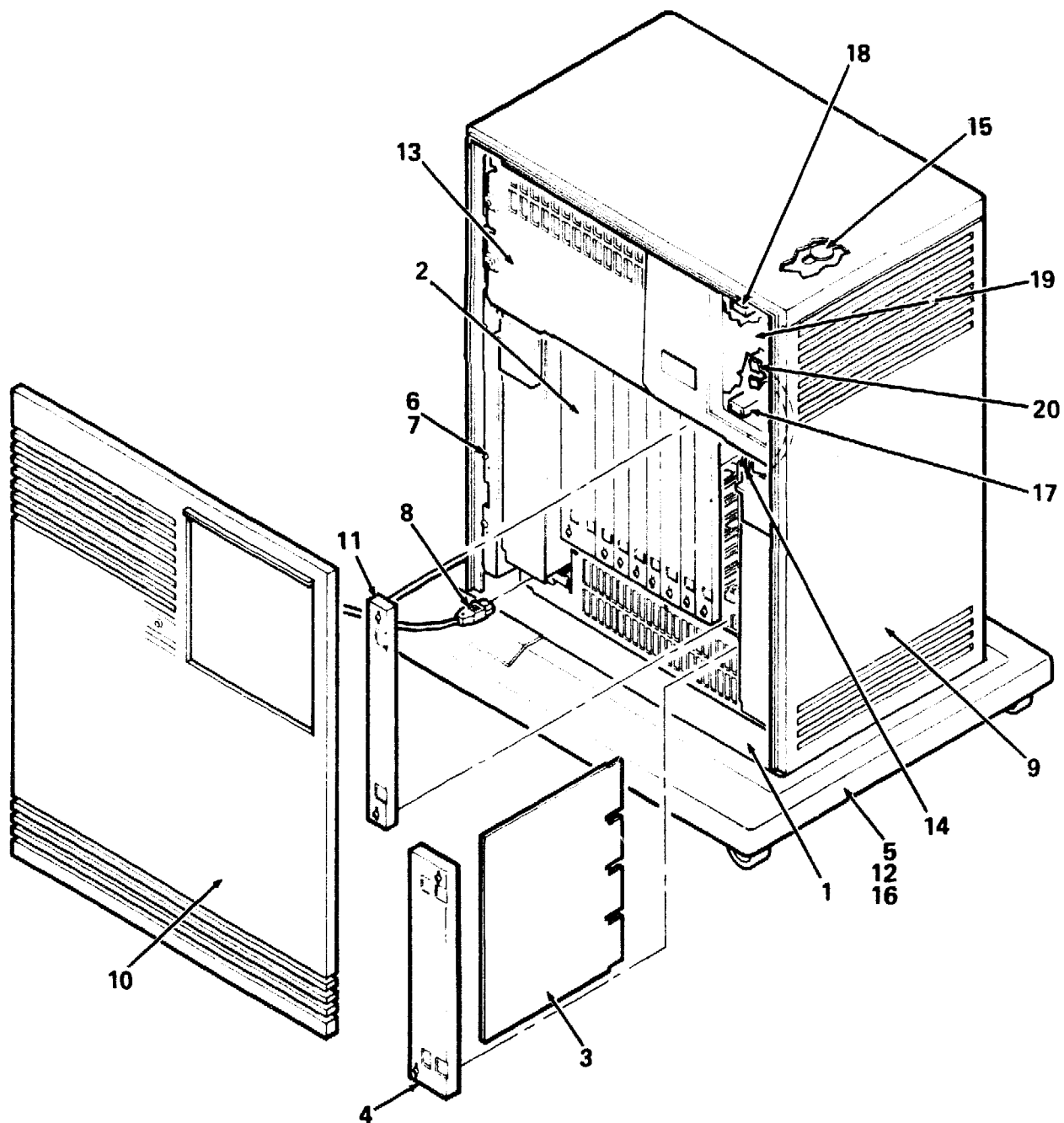


BA213-01-BD

**Figure 1. Enclosure Assembly, BA213 (Sheet 1 of 2)**

PARTS LIST





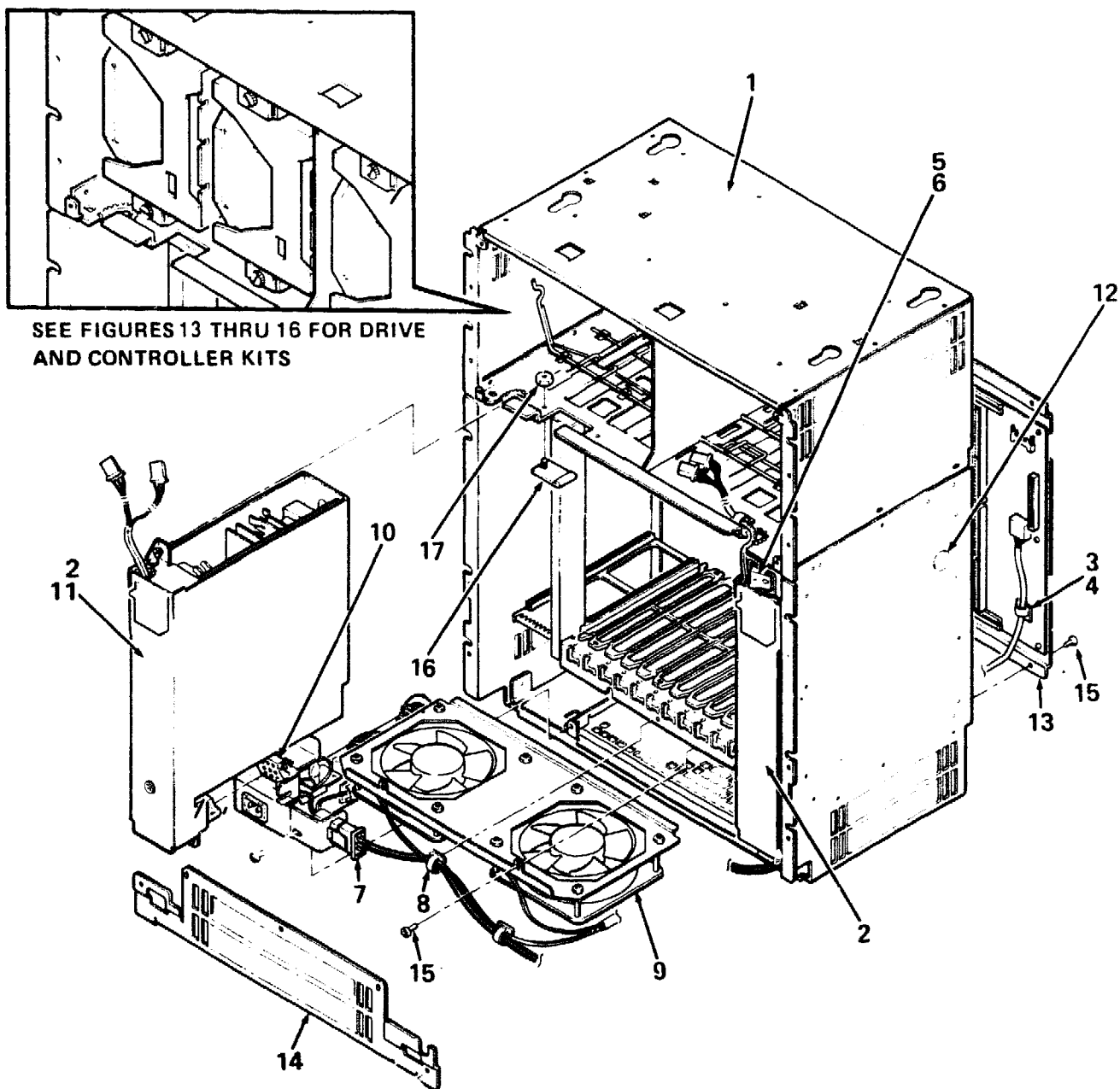
BA213-01A-BD

**Figure 1. Enclosure Assembly, BA213 (Sheet 2 of 2)**

PARTS LIST

FIG. & ITEM NO.	DESCRIPTION	DEC PART NO.	ECO CUT-IN BA213 00003	USED ON CODE	REF FIG NO.
1-	ENCLOSURE ASSEMBLY, BA213				
	Code A - Used on BA213-A2 1 PS 120V w/o Skins	BA213-A2		A	
	Code B - Used on BA213-A3 1 PS 240V w/o Skins	BA213-A3		B	
	Code C - Used on BA213-B2 2 PS 120V w/o Skins	BA213-B2		C	
	Code D - Used on BA213-B3 2 PS 240V w/o Skins	BA213-B3		D	
	Code E - Used on BA213-EA 1 PS 120V w/Skins	BA213-EA		E	
	Code F - Used on BA213-E3 2 PS 240V w/Skins	BA213-E3		F	
	Code G - Used on BA213-FA 2 PS 240V w/o Skins Rack Mount/ Wall Mount Kit	BA213-FA		G	
	Code H - Used on BA213-F3 2 PS 240V w/o Skins Rack Mount/ Wall Mount Kit	BA213-F3		H	
1	*ENCLOSURE ASSEMBLY, BA213 1 PS 120V	70-24227-01		A	2
	*ENCLOSURE ASSEMBLY, BA213 1 PS 240V	70-24227-02		B	2
	*ENCLOSURE ASSEMBLY, BA213 2 PS 120V	70-24227-03		CEG	2
	*ENCLOSURE ASSEMBLY, BA213 2 PS 240V	70-24227-04		DFH	2
2	*Bulkhead Assembly, Front Dual	70-23982-02		E-H	
3	*Module, Load	M9060-YA		E-H	
4	*Bulkhead Assembly, Front Dual	70-23982-01		E-H	
5	*BASE ASSEMBLY	70-24046-01		EF	12
6	*Screw, Self-Tap Phl Pan Hd No. 8-16 x 1/2	90-09800-08		EF	
7	*Washer, Flat	90-06661-00		EF	
8	*Cord, Power	17-00083-43		EG	
9	*ENCLOSURE ASSEMBLY, SHELL	70-24037-01		EF	10
10	*PANEL ASSEMBLY, FRONT	70-24041-01		EF	11
11	*Bulkhead Assembly, Front	70-23981-01		E-H	
12	*Screw, Sems Phl Pan Hd No.10-32 x 15/16	90-09282-00		EF	
13	*Panel Assembly, Front	70-23995-04		E-H	
14	*Switch, Frame	74-35417-01		EF	
15	*Plug, Button	90-07064-00		GH	
16	*Fastener, Turn	74-33854-01		EF	
17	*Mount Assembly, Bottom Shock (Replaces 70-23997-01)	70-25452-03	00004	E-H	
18	*Mount Assembly, Top Shock (Replaces 70-23997-02)	70-25452-04	00004	E-H	

FIG. & ITEM NO.	DESCRIPTION	DEC PART NO.	ECO CUT-IN BA213 00003	USED ON CODE	REF FIG NO.
1-					
19	*Panel, 5 1/4" Tape Drive Filler	74-36425-01		E-H	
20	*Harness Assembly	17-01362-01		E-H	
21	*Nameplate, BA213	74-34425-30		EF	
	KITS (Not Shown)				
	*KIT, RACK MOUNT BA213 LARGE S-BOX	BA213-RA		GH	
	**Guide, Rack Mount Installation	EK-BA200-IN			
	**Hardware, Rack Mount	70-24263-02			
	***Support, Mounting	74-34638-01			
	***Screw, Sems Phi Pan Hd No. 10-32 x 1/2	90-09700-00			
	***U-Nut, Retainer	90-07786-00			
	*KIT, WALL MOUNT BA213 LARGE S-BOX	BA213-WA		GH	
	**Guide, Wall Mount Installation	EK-BA200-IN			
	**Hardware, Wall Mount	70-24263-01			
	**Bracket, Wall Mount	74-34432-01			
	***Screw, Sems Phi Pan Hd No. 10-32 x 3/8	90-09228-10			
	*KIT, BIZ ACCESSORIES	70-24316-06		E-H	
	**Key, Plastic	12-17119-01			
	**Screwdriver, Flat Blade	47-00042-01			
	**Label, "S-Box MU"	36-27923-01			
	LABELS (Not Shown)				
	*Label, "Module Number M9060-YA"	36-26883-17		E-H	
	*Label, "Warning Equipment Rating 100-120V"	36-17905-16		EG	
	*Label, "Warning Equipment Rating 220-240V"	36-17905-17		FH	
	*Label, "Serial/Model 100V Made in USA"	36-27329-01		EG	
	*Label, "Serial/Model 100V Made in UK"	36-27329-02		EG	
	*Label, "Serial/Model 220V Made in USA"	36-27329-03		FH	
	*Label, "Serial/Model 220V Made in UK"	36-27329-04		FH	
	*Label, "Pedestal, USA 100V"	36-27838-31		E	
	*Label, "Pedestal, UK 100V"	36-27838-30		E	
	*Label, "Pedestal, USA 220V"	36-27838-28		F	
	*Label, "Pedestal, UK 220V"	36-27838-29		F	
	*Label, "Logo Model"	36-27354-25		GH	



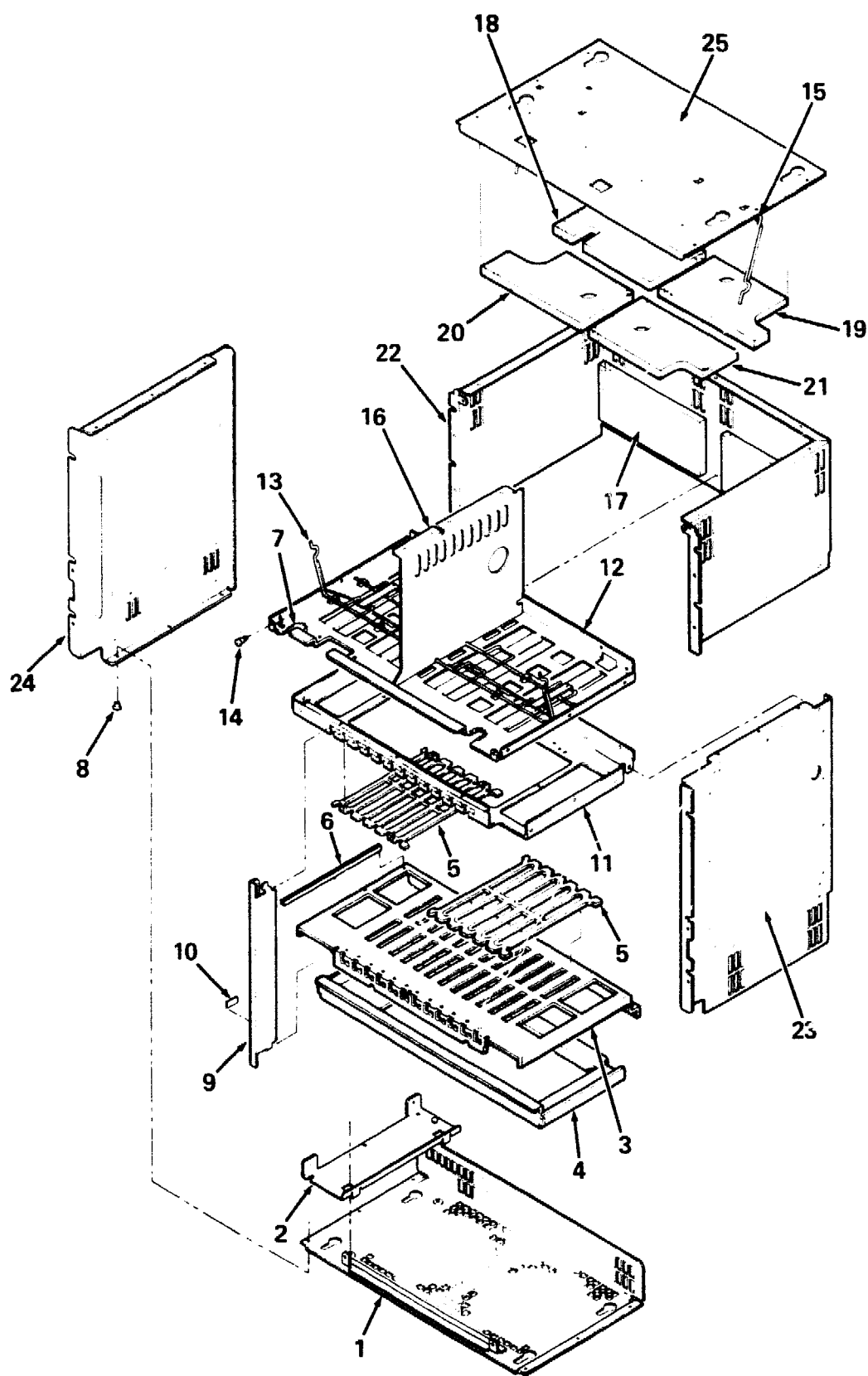
BA213-02-BD

**Figure 2. Enclosure Assembly, BA213**

PARTS LIST



FIG. & ITEM NO.	DESCRIPTION	DEC PART NO.	K ECO CUT-IN 70-24227 00002	USED ON CODE	REF FIG NO.
2-	ENCLOSURE ASSEMBLY, BA213 1 PS 120V	70-24227-01		A	1
	ENCLOSURE ASSEMBLY, BA213 1 PS 240V	70-24227-02		B	1
	ENCLOSURE ASSEMBLY, BA213 2 PS 120V	70-24227-03		CEG	1
	ENCLOSURE ASSEMBLY, BA213 2 PS 240V	70-24227-04		DFH	1
1	*FRAME ASSEMBLY, BA213	70-24255-01			3
2	*POWER SUPPLY ASSEMBLY, H7868 100/120V	H7868-A		ACEG	4
	*POWER SUPPLY ASSEMBLY, H7868 220/240V	H7868-B		BDFH	4
3	*Clamp, Cable (deleted)	90-08264-00	00007		
4	*Tie, Cable (deleted)	90-07032-00	00007		
5	*SWITCH ASSEMBLY	70-23999-01			6
6	*Nut, Kep No. 6-32	90-08185-00			
7	*Cable Assembly	17-01360-01			
8	*Clip, Wire Routing (Replaces 12-21249-04)	12-21249-06	00007		
9	*FAN ASSEMBLY	70-23998-01			7
10	*INPUT ASSEMBLY, FILTER	70-23769-01			5
11	*Filler, Power Supply Assembly	70-23996-01		AB	
12	*Plug, Button (added)	90-07064-00	00007		
13	*BACKPLANE ASSEMBLY, BA213	70-23712-01			8,8A
14	*Panel Assembly, Access	70-25721-01			
15	*Screw, Self Tap Truss Hd No. 6 x 5/16	90-00063-78			
16	*Plate, Cover (added)	74-37040-01	00003		
17	*Nut, Kep No. 6-32 x 1/4 (added)	90-08185-00	00003		

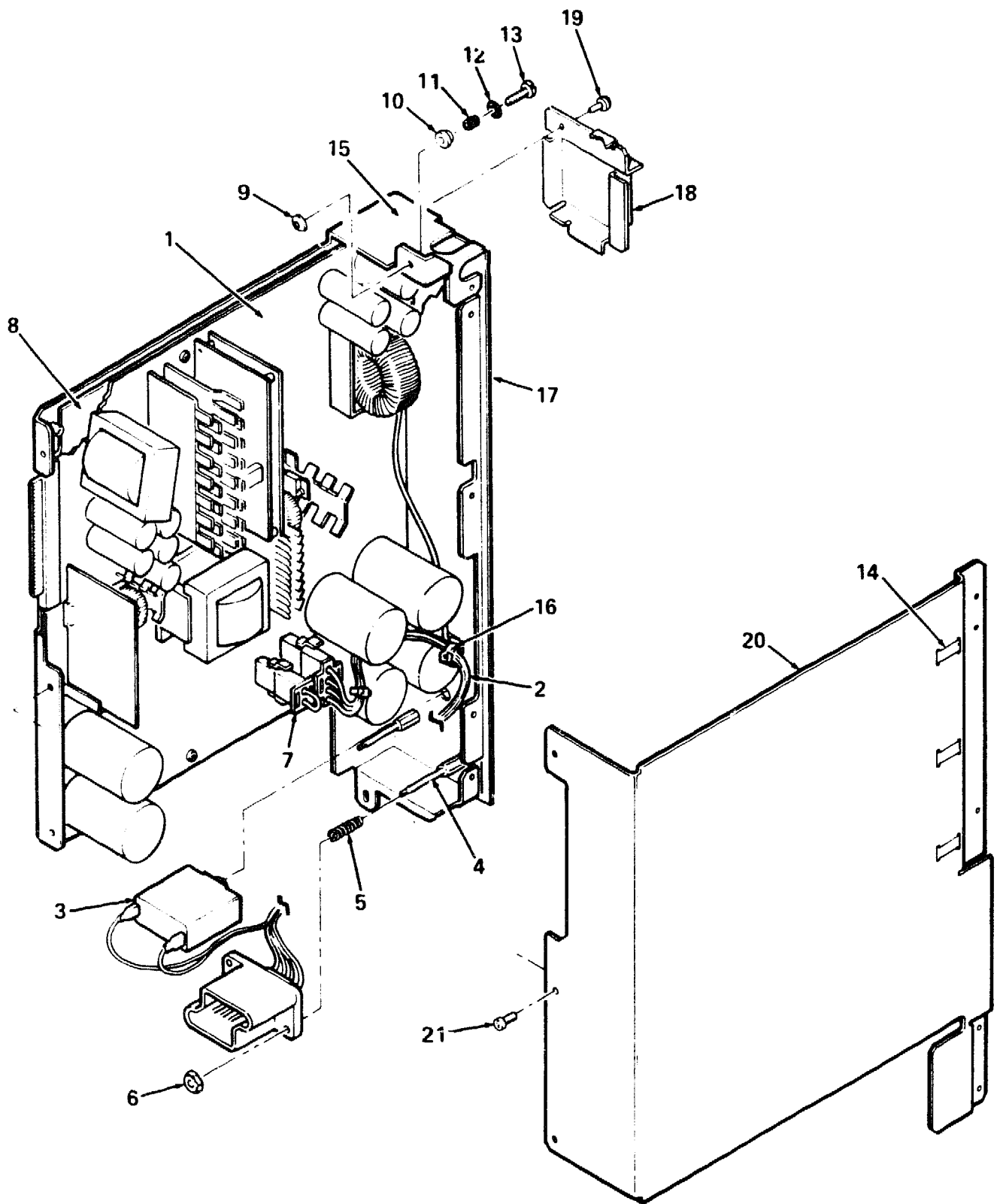


BA213-03-BD

**Figure 3. Frame Assembly, BA213**

PARTS LIST

FIG. & ITEM NO.	DESCRIPTION	DEC PART NO.	ECO CUT-IN 70-24255 00000	USED ON CODE	REF FIG NO.
3-	FRAME ASSEMBLY, BA213	70-24255-01			2
1	*Weldment, Bottom Pan	70-24047-01			
2	*Tray, AC Filter	74-33974-01			
3	*Card Cage, Bottom (Replaces 74-33561-01)	74-39622-01	00003		
4	*Support, Fan (Replaces 74-33562-01)	74-39625-01	00003		
5	*Card Guide, 6 Slot	74-33564-01			
6	*Card Guide	12-26912-01			
7	*Grommet	12-25469-03			
8	*Rivet	90-00030-40			
9	*Filler, Gap	74-33971-01			
10	*Finger, Grounding	12-26922-01			
11	*Support, Top Card Cage (Replaces 74-33560-01)	74-39621-01	00003		
12	*Pan, Bottom	74-33575-01			
13	*Bracket Assembly, Shipping	70-24054-01			
14	*Screw, Slotted Filister Hd No. 6-32 x 5/16	12-27451-01			
15	*Weldment Assembly, Top	70-23974-01			
16	*Support, Center	74-33973-01			
17	*Foam, Back	74-33978-01			
18	*Foam, Top	74-33977-01			
19	*Foam, Top Right	74-33977-02			
20	*Foam, Top	74-33977-03			
21	*Foam, Top	74-33977-04			
22	*Enclosure, Side	74-33569-01			
23	*Panel, Right Side (Replaces 74-33558-01)	74-39624-01	00003		
24	*Panel, Left Side (Replaces 74-33559-01)	74-39623-01	00003		
25	*Cover, Top	74-33571-01			

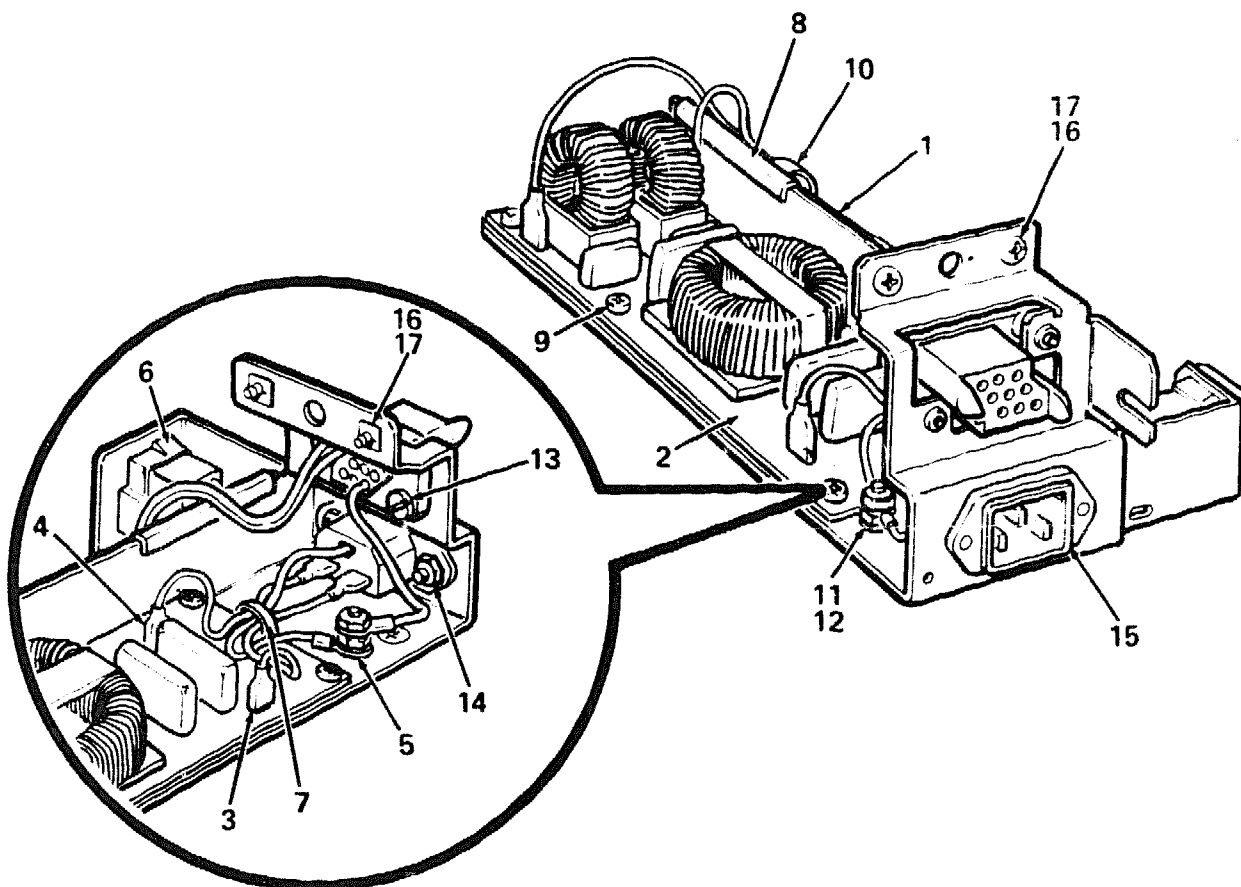


BA213-04-BD

**Figure 4. Power Supply Assembly, H7868**

PARTS LIST

FIG. & ITEM NO.	DESCRIPTION	DEC PART NO.	ECO CUT-IN H7868 00002	USED ON CODE	REF FIG NO.
4-	POWER SUPPLY ASSEMBLY, H7868 100/120V POWER SUPPLY ASSEMBLY, H7868 220/240V	H7868-A H7868-B		ACEG BDFH	2 2
1	*Module, Power Supply	54-16879-01			
2	*HARNESS ASSEMBLY, H7868	70-23366-01			9
3	*Circuit Breaker	12-19912-06			
4	*Support, Spring	74-34431-01			
5	*Spring, Compression	12-27235-02			
6	*Nut, Kep No. 6-32	90-08055-00			
7	*Jumper Assembly, 2-Pin Male-N-Lock, 120V	70-23770-01		ACEG	
8	*Pad, Insulator	74-33418-01			
9	*Washer, Retaining (Replaces 12-27764-01)	12-30421-01	00004		
10	*Bushing, Captive Screw	12-27446-01			
11	*Spring, Compression	12-27445-01			
12	*Washer, External Tooth Lock No. 6	90-07649-00			
13	*Screw, Shoulder No. 6-32 x 1/2 (Replaces 12-27771-01)	12-27772-01	00004		
14	*Finger, Grounding	12-26922-01			
15	*Bracket, Power Supply (deleted)	74-36556-01	00004		
16	*Tie, Cable (deleted)	90-07031-00	00004		
17	*Enclosure, Power Supply (Replaces 74-33416-01)	74-33416-02	00004		
18	*COVER ASSEMBLY, TOP POWER SUPPLY (Replaces 74-33976-01)	70-22808-01	00004		
	**Cover, Top Power Supply (added)	74-33976-02	00004		
	**Screw, Captive No. 6-32 (added)	12-30239-01	00004		
	**Washer, Retaining (added)	12-30421-01	00004		
19	*Screw, Sems Phi Pan Hd No. 4-40 x 3/8 (deleted)	90-09643-00	00004		
20	*Cover, Power Supply	74-33417-01			
21	*Screw, Sems Phi Pan Hd No. 6-32 x 5/16	90-09984-07			
	LABELS (Not Shown)				
	*Label, "Power Supply H7868-A"	36-26511-01		ACEG	
	*Label, "Power Supply H7868-B"	36-26511-02		BDFH	
	*Label, "Blank Bar Code"	36-18460-05			
	*Label, "H7868-A"	36-27463-01		ACEG	
	*Label, "H7868-B"	36-27463-02		BDFH	
	*Label, "Danger High Voltage"	36-10267-02			
	*Label, "BA2XX Rev" (Rolled) (added)	36-29163-05	00004		

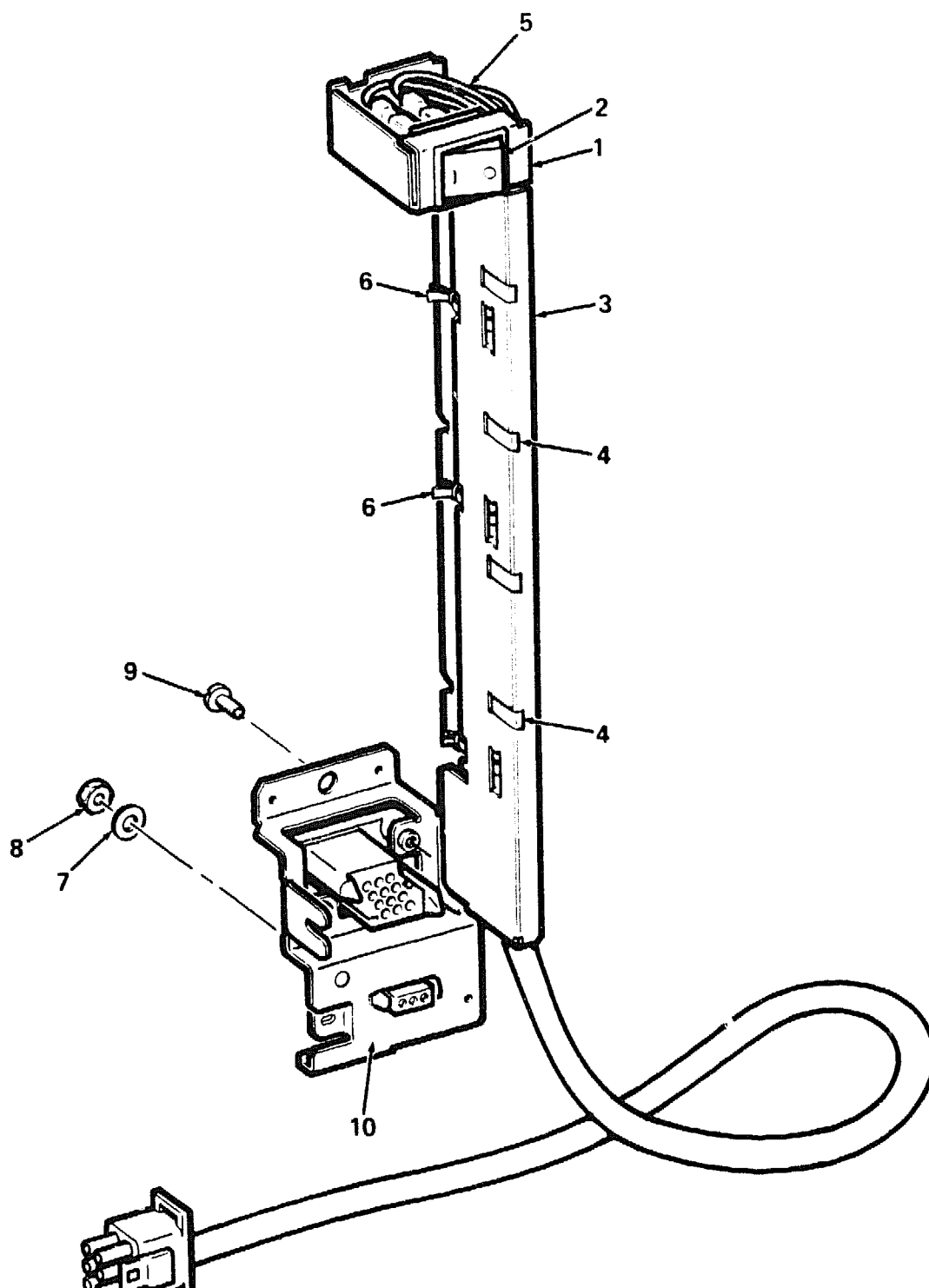


BA213-05-BD

**Figure 5. Filter Assembly, Input**

PARTS LIST

FIG. & ITEM NO.	DESCRIPTION	DEC PART NO.	ECO CUT-IN 70-23769 00000	USED ON CODE	REF FIG NO.
5-	FILTER ASSEMBLY, INPUT	70-23769-01			2
1	*Support, AC Filter	74-33962-01			
2	*Module, Dual Power Supply EMI Filter	54-17079-01			
3	*Jumper, AC Input	70-24004-01			
4	*Jumper, AC Input	70-24004-02			
5	*Jumper, AC Input Ground	70-24007-01			
6	*Wiring Assembly, Filter	70-24001-01			
7	*Tie, Cable	90-07031-00			
8	*Grommet	12-25469-04			
9	*Screw, Sems Phi Pan Hd No. 6-32 x 5/16	90-09984-07			
10	*Clip, Wire Routing	12-21249-04			
11	*Washer, Flat	90-06664-00			
12	*Nut, Kep No. 10-32	90-06565-00			
13	*Screw, Shoulder No. 8-32	12-27034-01			
14	*Nut, Kep No. 4-40	90-06557-00			
15	*Connector, (J3) 3-Pin Power Receptacle 10A, 250V	12-17874-02			
16	*Screw, Mach Phi Truss Hd No. 6 x 5/16 (Replaces 90-00063-78)	90-10971-01	00002		
17	*Washer, Retaining (Replaces 12-27764-01)	12-30421-01	00002		
	LABELS (Not Shown)				
	*Label, "Ground Symbol"	36-12680-00			
	*Label, "Ground Symbol w/Circle"	36-12680-02			
	*Label, "Blank Bar Code"	36-18460-05			



BA213-06-BD

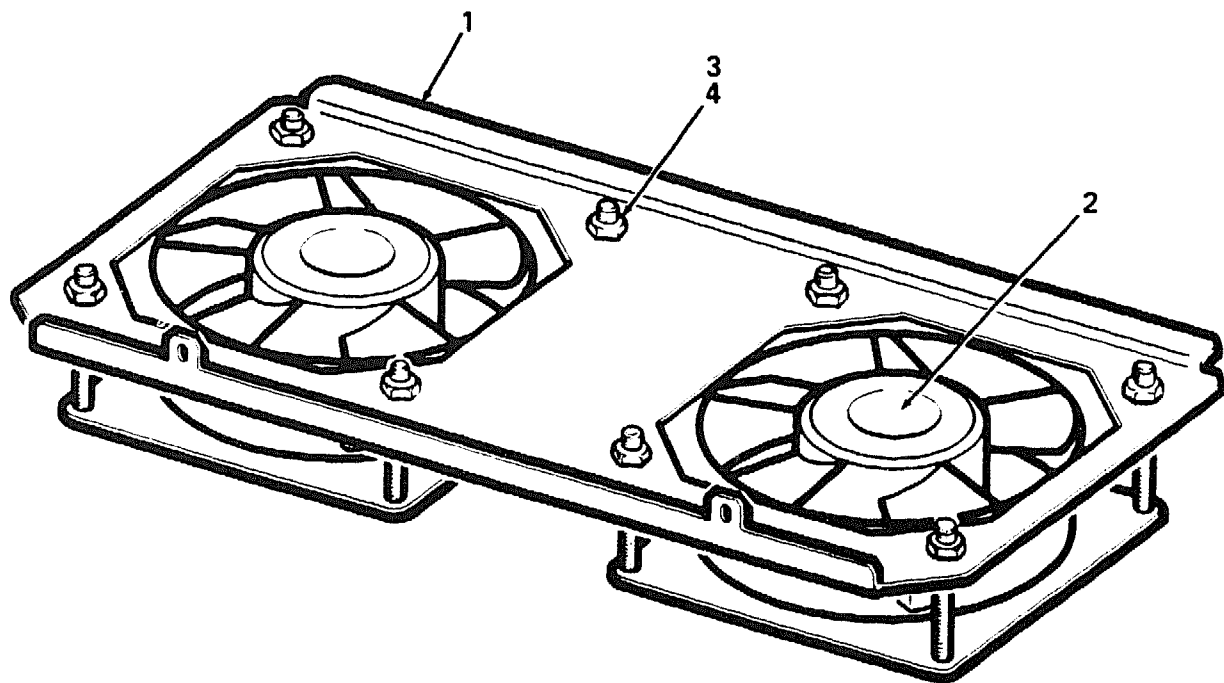
**Figure 6. Switch Assembly**

PARTS LIST



FIG.& ITEM NO.	DESCRIPTION	DEC PART NO.	ECO CUT-IN 70-23999 00000	USED ON CODE	REF FIG NO.
6-	SWITCH ASSEMBLY	70-23999-01			2
1	*Box, Switch	74-33966-01			
2	*Switch, Rocker	12-21262-05			
3	*Channel, A/C Right (Replaces 70-24234-01)	74-33975-01	00001		
4	*Finger, Grounding	12-26922-01			
5	*Harness Assembly, Wire	17-01469-01			
6	*Tie, Cable	90-07031-00			
7	*Washer, Flat	90-06664-00			
8	*Nut, Kep No. 10-32	90-06565-00			
9	*Screw, Shoulder No. 8-32	12-27034-01			
10	*Cover, A/C Right (Replaces 70-24234-01)	74-33963-01	00001		

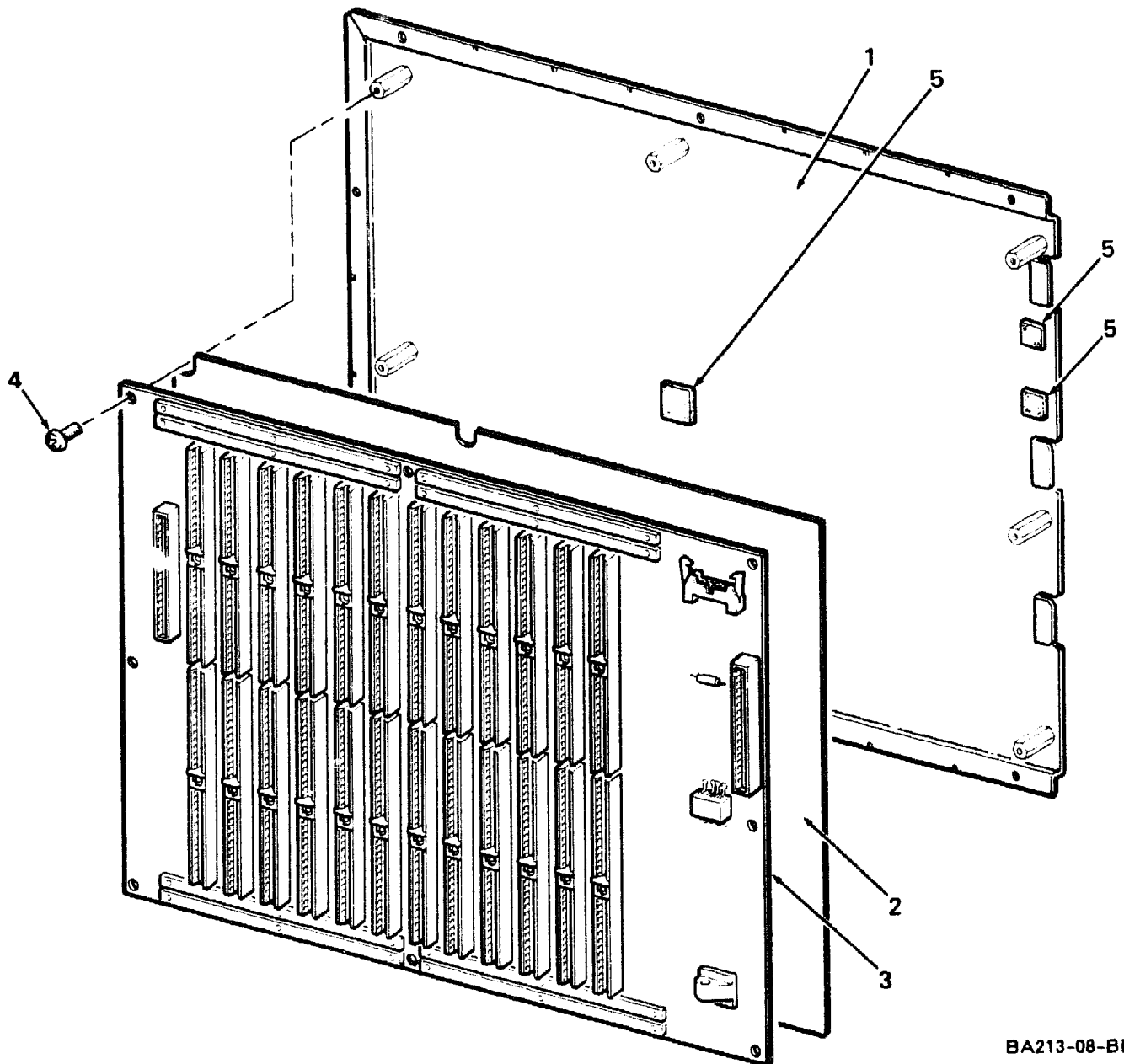
FIG. & ITEM NO.	DESCRIPTION	DEC PART NO.	ECO CUT-IN 70-23998 00000	USED ON CODE	REF FIG NO.
7-	FAN ASSEMBLY	70-23998-01			2
1	*Bracket, Fan	74-33565-01			
2	*Fan, Tube Axial 4 1/2 inch	12-23609-04			
3	*Nut, Well No. 6-32	90-10115-00			
4	*Screw, Phl Pan Hd No. 6-32 x 2	90-06032-01			



BA213-07-BD

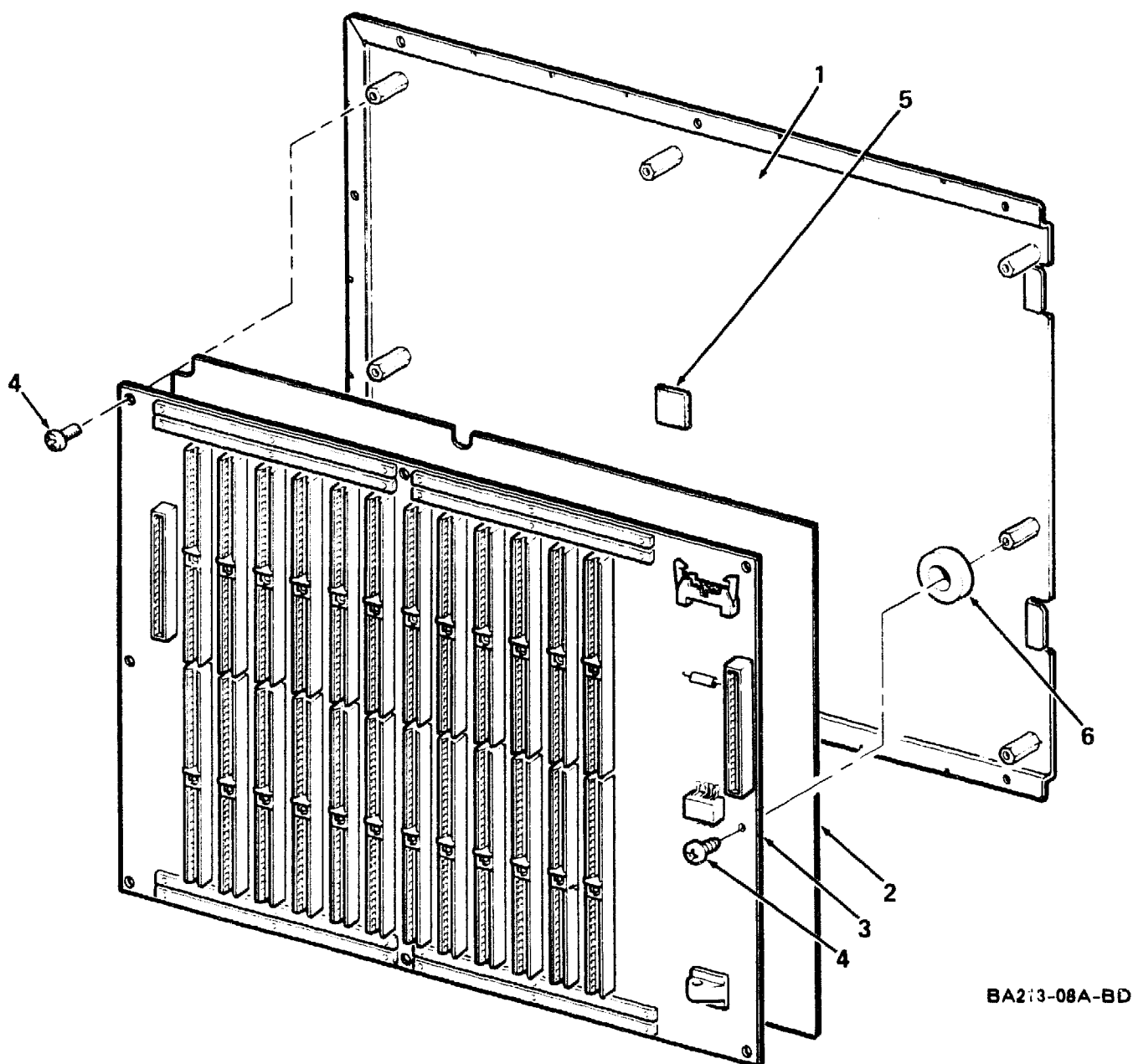
**Figure 7. Fan Assembly**

FIG.& ITEM NO.	DESCRIPTION	DEC PART NO.	E ECO CUT-IN 70-23712 00000	USED ON CODE	REF FIG NO.
8-	BACKPLANE ASSEMBLY, BA213	70-23712-01			2
1	*Panel, Backplane Support	74-33566-01			
2	*Insulator, Backplane	74-33980-01			
3	*Backplane, 12 Slot Q-Bus	54-16791-01			
4	*Screw, Self Tap Truss Hd No. 6 x 5/16	90-00063-78			
5	*Bumper, Square Rubber	90-08525-01			



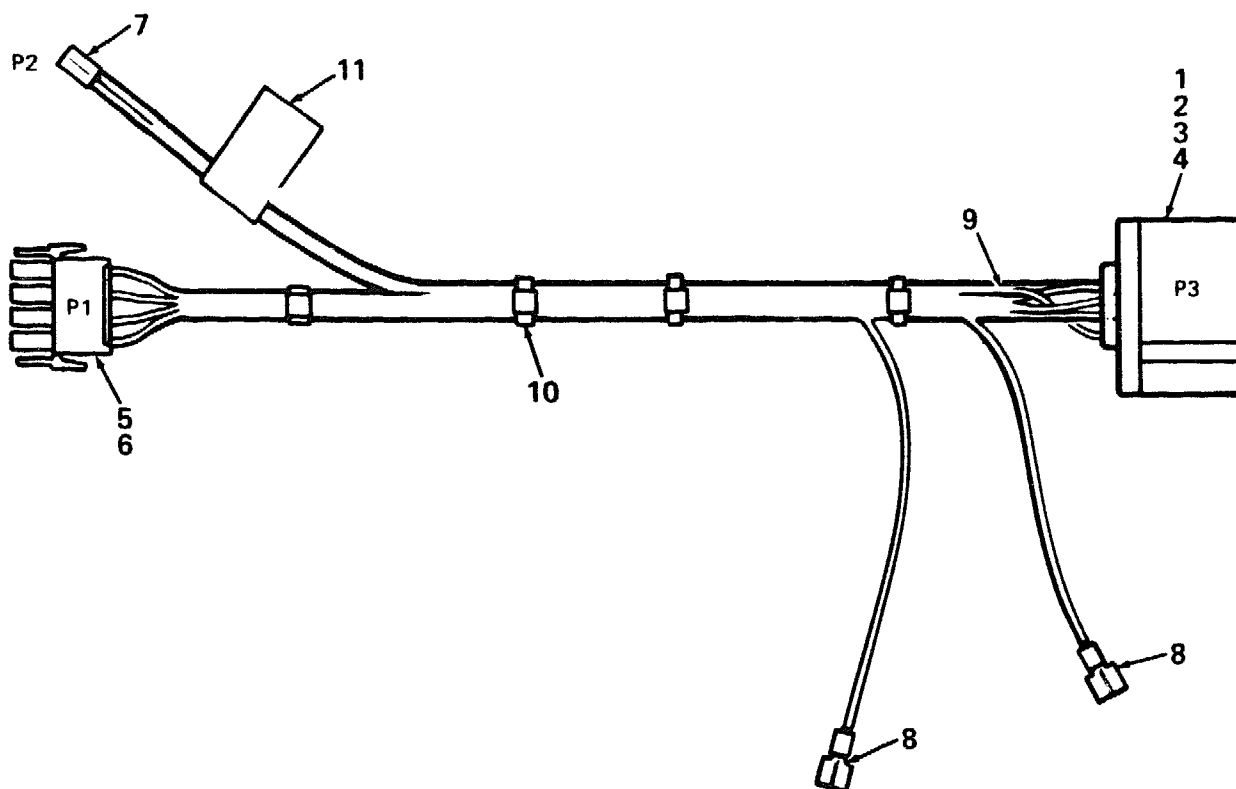
**Figure 8. Backplane Assembly, BA213**

FIG. & ITEM NO.	DESCRIPTION	DEC PART NO.	ECO CUT-IN 70-23712 00005	USED ON CODE	REF FIG NO.
8A-	BACKPLANE ASSEMBLY, BA213	70-23712-01			2
1	*Panel, Backplane Support	74-39626-01			
2	*Insulator, Backplane	74-33980-01			
3	*Backplane, 12 Slot Q-Bus	54-16791-01			
4	*Screw, Self-Tap Truss Hd No. 6 x 5/16	90-00063-78			
5	*Bumper, Square Rubber	90-08525-01			
6	*Washer, Shoulder	74-39818-01			



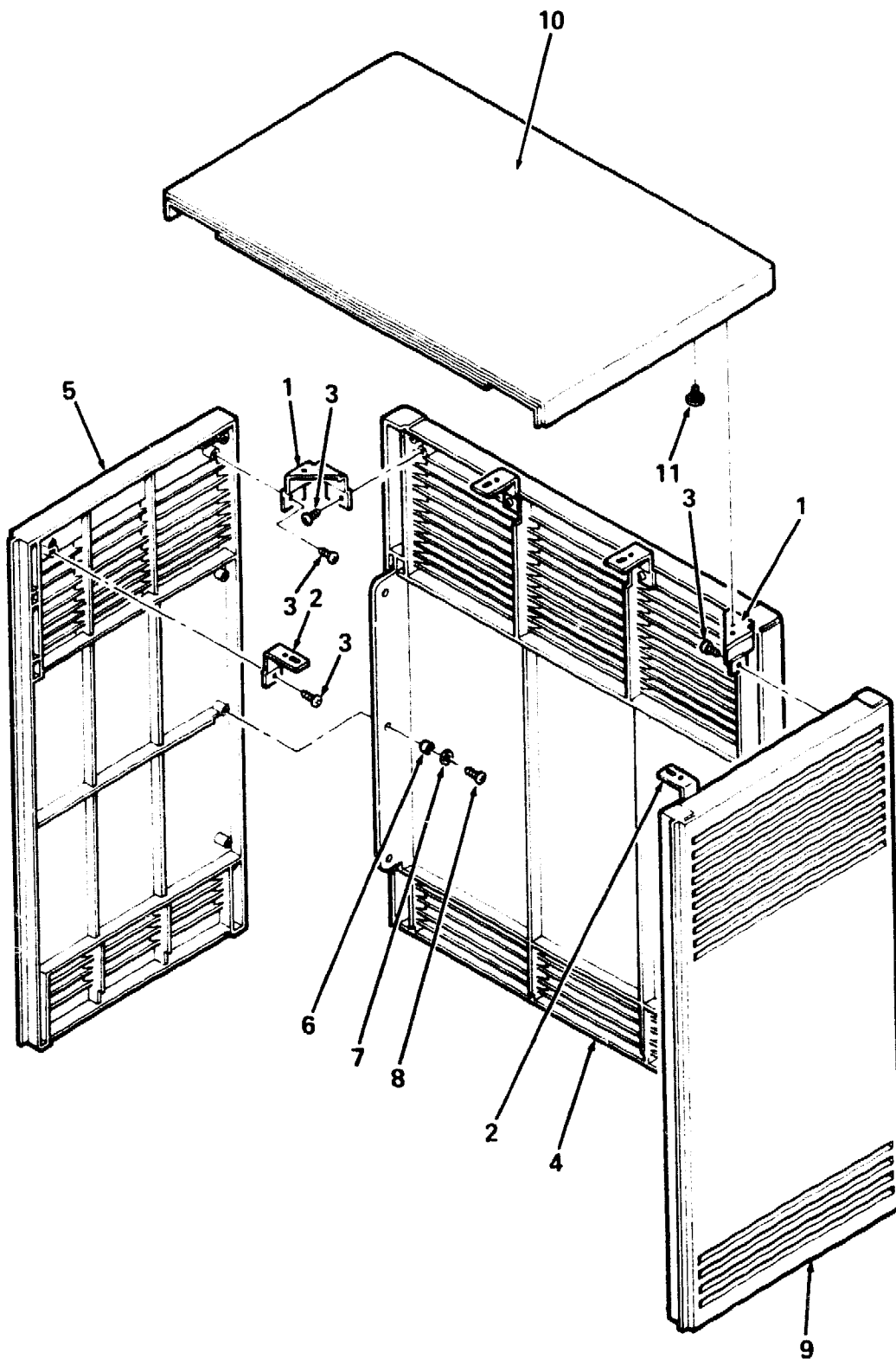
**Figure 8A. Backplane Assembly, BA213**

FIG. & ITEM NO.	DESCRIPTION	DEC PART NO.	ECO CUT-IN 70-23366 00000	USED ON CODE	REF FIG NO.
9-	HARNESS ASSEMBLY, H7868	70-23366-01			4
1	*Connector, (P3) Power Receptacle	12-25571-01			
2	*Terminal, (P3) Pin Contact	12-26858-02			
3	*Terminal, (P3) Power	12-25867-01			
4	*Terminal, (P3), 24-Pin 20AWG	12-26858-01			
5	*Connector, (P1) Universal Socket Mate-N-Lok	12-12167-01			
6	*Terminal, (P1) Socket Contact Mate-N-Lok	12-12170-00			
7	*Connector, (P2) IDC	12-15815-00			
8	*Terminal, Faston	12-26555-01			
9	*Wire, Strand Brown, 18AWG	91-07786-11			
	*Wire, Strand Blue, 18AWG	91-07786-66			
	*Wire, Strand Yellow/Green, 18AWG	91-07828-54			
	*Wire, Strand White, 22AWG	91-07796-99			
	*Wire, Strand Orange, 22AWG	91-07796-33			
	*Wire, Strand Black, 18AWG	91-07786-00			
10	*Tie, Cable	90-07031-00			
11	*Label, "ID"	36-16073-00			



BA213-09-BD

**Figure 9. Harness Assembly, H7868**

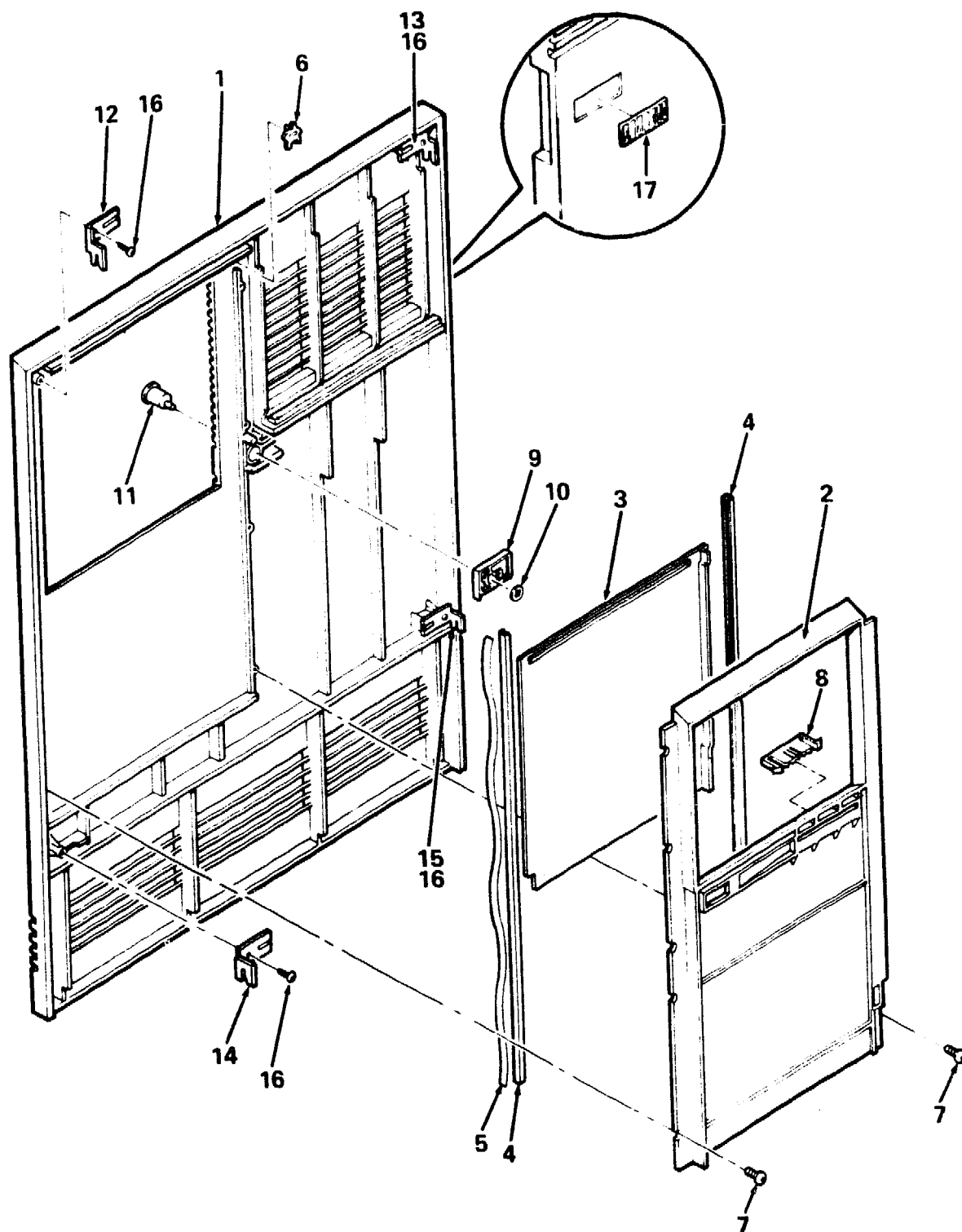


BA213-10-BD

**Figure 10. Enclosure Assembly, Shell**

PARTS LIST

FIG. & ITEM NO.	DESCRIPTION	DEC PART NO.	ECO CUT-IN 70-24037 00000	USED ON CODE	REF FIG NO.
10-	ENCLOSURE ASSSEMBLY, SHELL	70-24037-01			1
1	*Bracket, Corner	74-34126-01			
2	*Bracket, Side	74-34125-01			
3	*Screw, Self-Tap Phl Pan Hd No. 8-16 x 3/8	90-09800-04			
4	*Panel, Rear	74-33651-01			
5	*Panel, Left Side	74-33694-01			
6	*Sleeve	74-34424-01			
7	*Washer, Flat	90-06661-00			
8	*Screw, Self-Tap Phl Pan Hd No. 8-16 x 1/2	90-09800-08			
9	*Panel, Right Side	74-33647-01			
10	*Cover, Top	74-33646-01			
11	*Screw, Thread Rolling Shoulder	12-26868-01			



BA213-11-BD

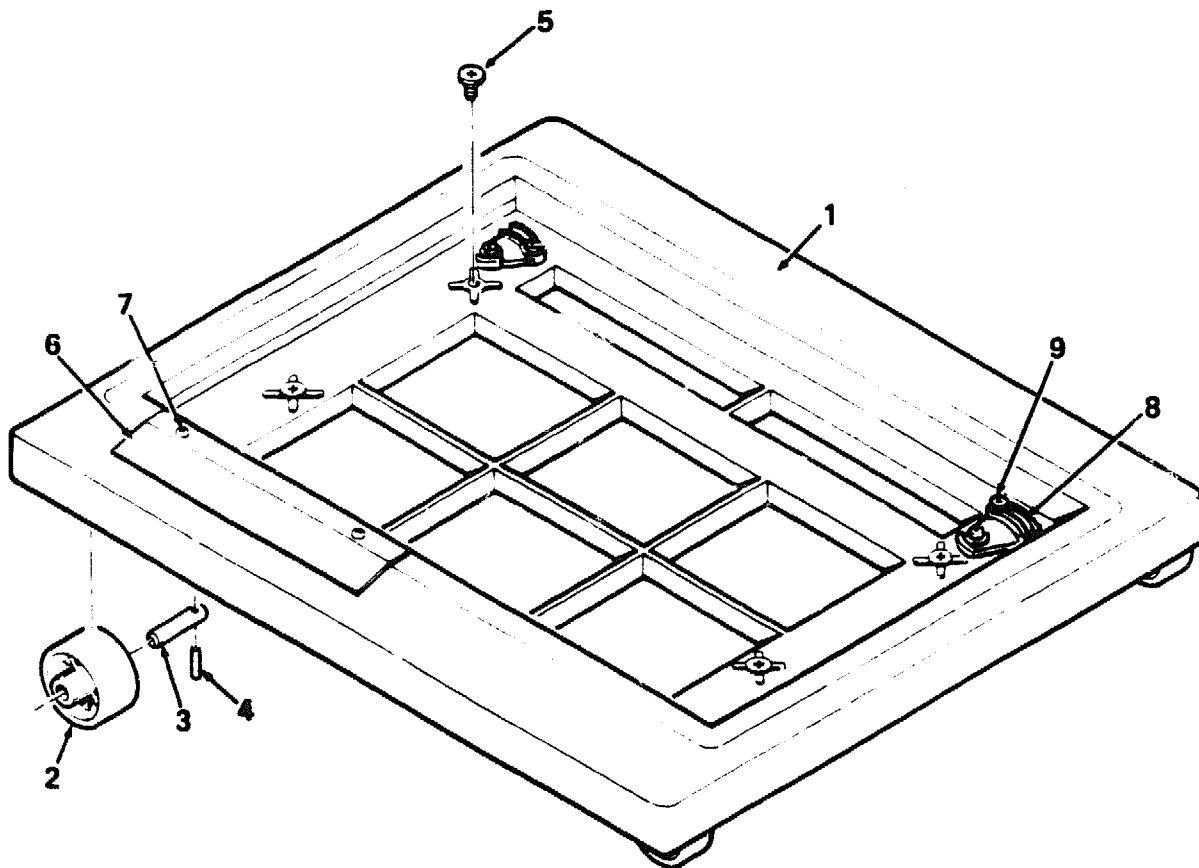
**Figure 11. Panel Assembly, Front**

**PARTS LIST**



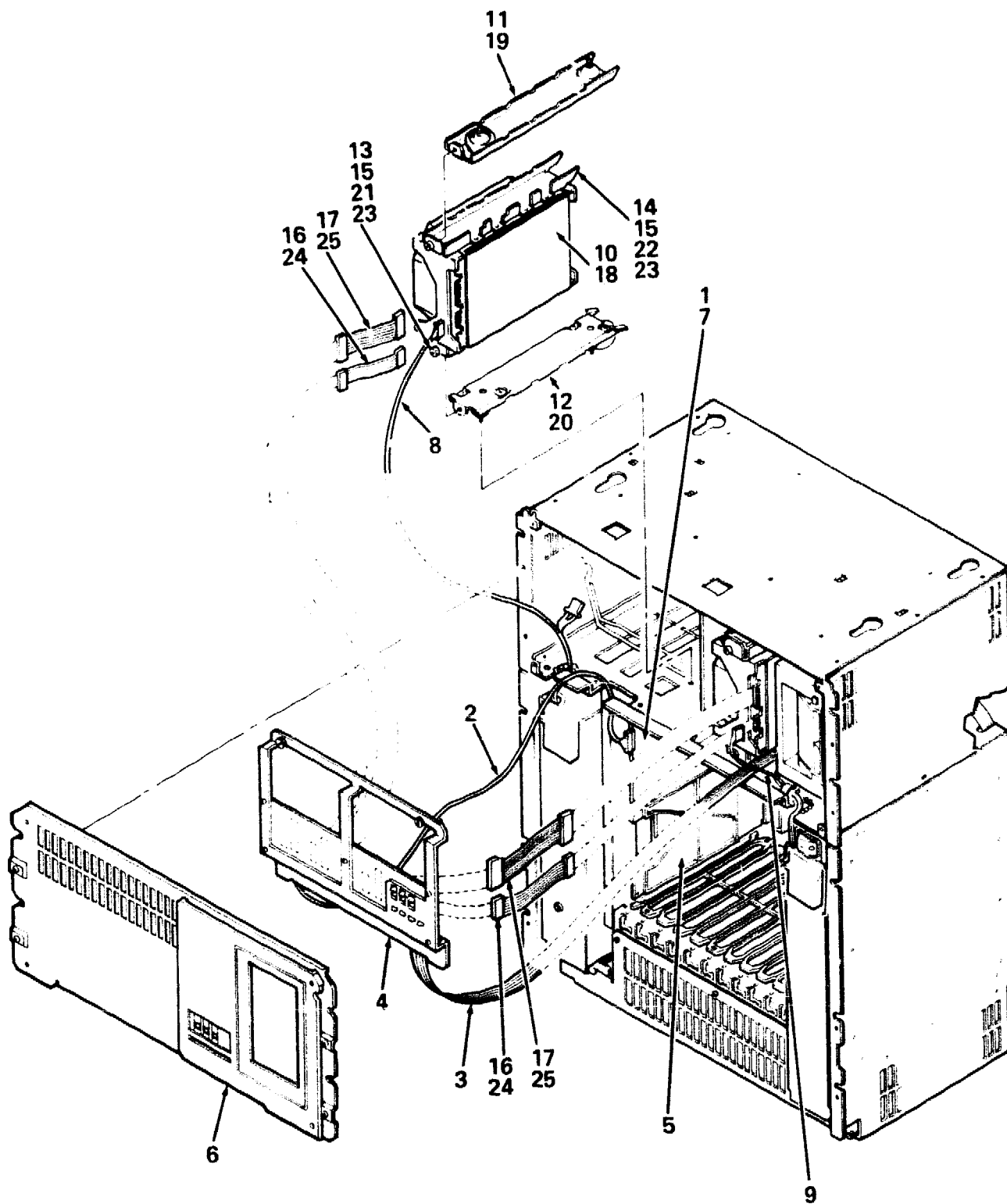
FIG.& ITEM NO.	DESCRIPTION	DEC PART NO.	ECO CUT-IN 70-24041 00000	USED ON CODE	REF FIG NO.
11-	PANEL ASSEMBLY, FRONT	70-24041-01		EF	1
1	*Panel, Front	74-33648-01			
2	*Bezel, Switch	74-34067-01			
3	*Door	74-34061-01			
4	*Channel, Front Panel	74-34062-01			
5	*Spring, Channel	74-34066-01			
6	*Stop, Door Position	74-34363-01			
7	*Screw, Phi Pan Hd No. 6-19 x 3/8	90-09800-06			
8	*Latch, Pull	74-34064-01			
9	*Latch, Slide	74-34065-01			
10	*Ring, Retainer	90-09257-05			
11	*Tumbler	74-34063-01			
12	*Bracket, Top Right Hand	74-34123-01			
13	*Bracket, Top Left Hand	74-34123-02			
14	*Bracket, Bottom Right Hand	74-34124-01			
15	*Bracket, Bottom Left Hand	74-34124-02			
16	*Screw, Self-Tap Phi Pan Hd No. 8-16 x 3/8	90-09800-04			
17	*Logo	74-34426-01			

FIG. & ITEM NO.	DESCRIPTION	DEC PART NO.	ECO CUT-IN 70-24046 00001	USED ON CODE	REF FIG NO.
12-	BASE ASSEMBLY	70-24046-01		EF	1
1	*Base, Lower	74-33650-01			
2	*Wheel, Base	74-34068-01			
3	*Shaft, Wheel	74-34069-01			
4	*Pin, Roll	90-09385-00			
5	*Screw, Thread Rolling Shoulder	12-26868-01			
6	*Support, Label	74-34846-01			
7	*Screw, Self-Tap Phi Pan Hd No. 6-19 x 3/8	90-09800-06			
8	*Fastener, Turn (See Note)	74-33854-01			
9	*Screw, Sems Phi Pan Hd No. 10-32 x 5/16 (See Note)	90-09282-00			
Note: Item part of Figure 1. Shown here for clarity.					



BA213-12-BD

**Figure 12. Base Assembly**

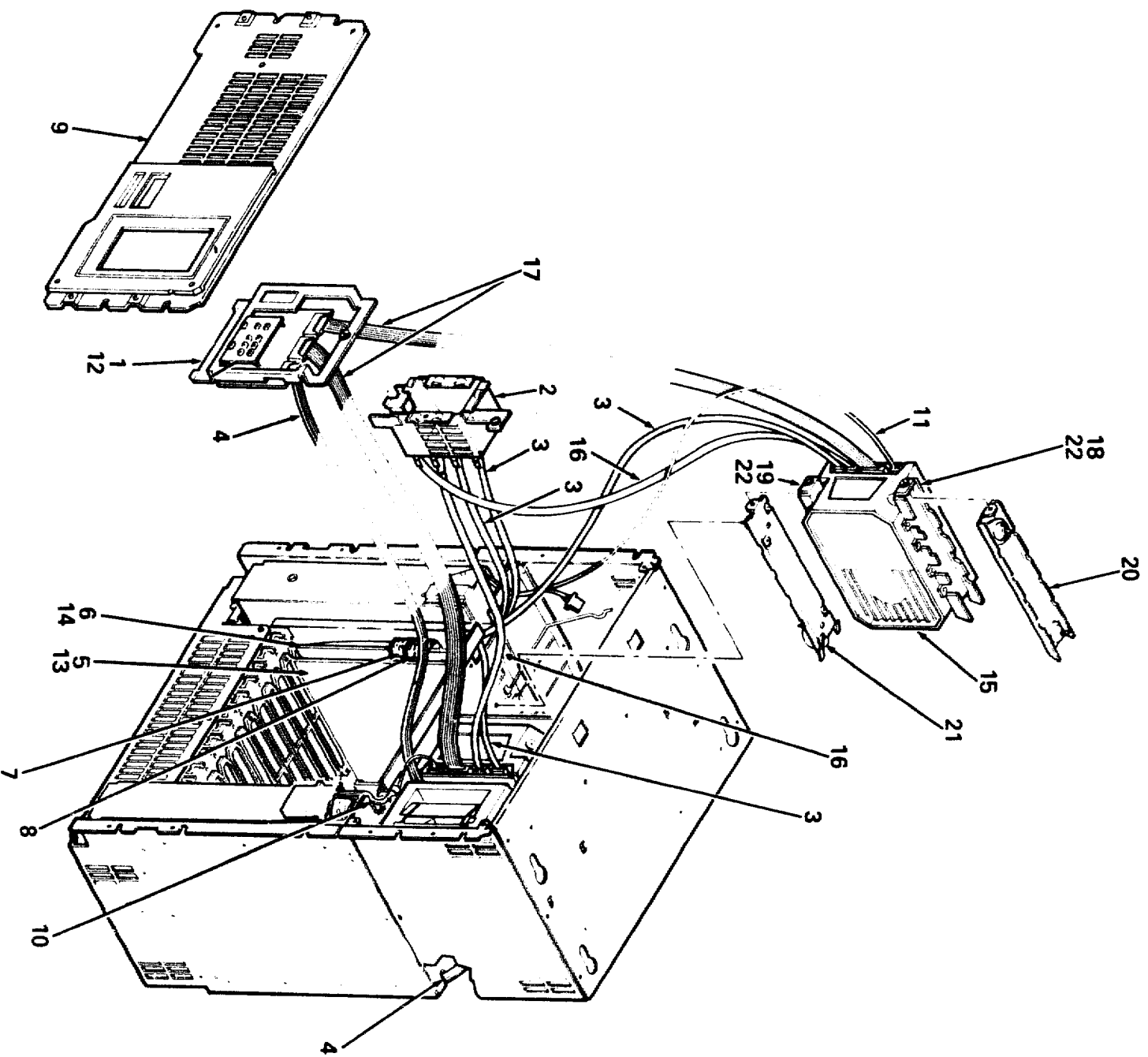


BA213-13-BD

**Figure 13. Kit, Controller and Disk Drive Mounting**

PARTS LIST

FIG.& ITEM NO.	DESCRIPTION	DEC PART NO.	ECO CUT-IN	USED ON CODE	REF FIG NO.
13-	KITS, CONTROLLER and DISK DRIVE MOUNTING				
13A	*KIT, RQDX3-S Q-bus CONTROLLER	RQDX3-SA			
1	**Module, RD/RX Controller	RQDX3-00			
2	**Cable Assembly, Round, 50 Conductor	17-01361-01			
3	**Cable Assembly, Flat Ribbon, 10 Conductor	17-01641-01			
4	**SDB Assembly	70-24249-01			
5	**Panel, Blank Dual	74-33507-01			
6	**Panel, Front Assembly	70-23995-01			
7	**Label, "Module Number" (See Note)	36-26883-10			
8	**Harness Assembly, Left Power	17-01362-02			
9	**Harness Assembly, Right Power	17-01362-01			
*****					
13B	*KIT, RD53A DISK DRIVE MOUNTING W/CABLES	RD53A-SA			
10	**DISK DRIVE, 5.25 inch w/No Skid Plate (See IPB Manual EK-RD53A-IP)	RD53-EA			
11	**Shock Assembly, Top	70-25452-03			
12	**Shock Assembly, Bottom	70-25452-04			
13	**Bracket, Bottom Drive	74-33573-02			
14	**Bracket, Top Drive	74-33573-01			
15	***Screw, Slotted Shoulder Hd No. 6-32 x 1/2	12-27771-01			
	***Screw, Mach Flat Phi Hd No. 6-32 x 5/16	90-08404-02			
16	**Cable Assembly, Flat Ribbon, 20 Conductor	17-00282-03			
17	**Cable Assembly, Flat Ribbon, 34 Conductor	17-00286-03			
*****					
13C	*KIT, RD54A DISK DRIVE MOUNTING W/CABLES	RD54A-SA			
18	**DISK DRIVE, 5.25 inch w/No Skid Plate (See IPB Manual EK-RD54A-IP)	RD54-EA			
19	**Shock Assembly, Top	70-23997-03			
20	**Shock Assembly, Bottom	70-23997-04			
21	**Bracket, Bottom Drive	74-33573-02			
22	**Bracket, Top Drive	74-33573-01			
23	***Screw, Slotted Shoulder Hd No. 6-32 x 1/2	12-27771-01			
	***Screw, Mach Flat Phi Hd No. 6-32 x 5/16	90-08404-02			
24	**Cable Assembly, Flat Ribbon, 20 Conductor	17-00282-03			
25	**Cable Assembly, Flat Ribbon, 34 Conductor	17-00286-03			
	Note: Label placement is on Module Bulkhead.				

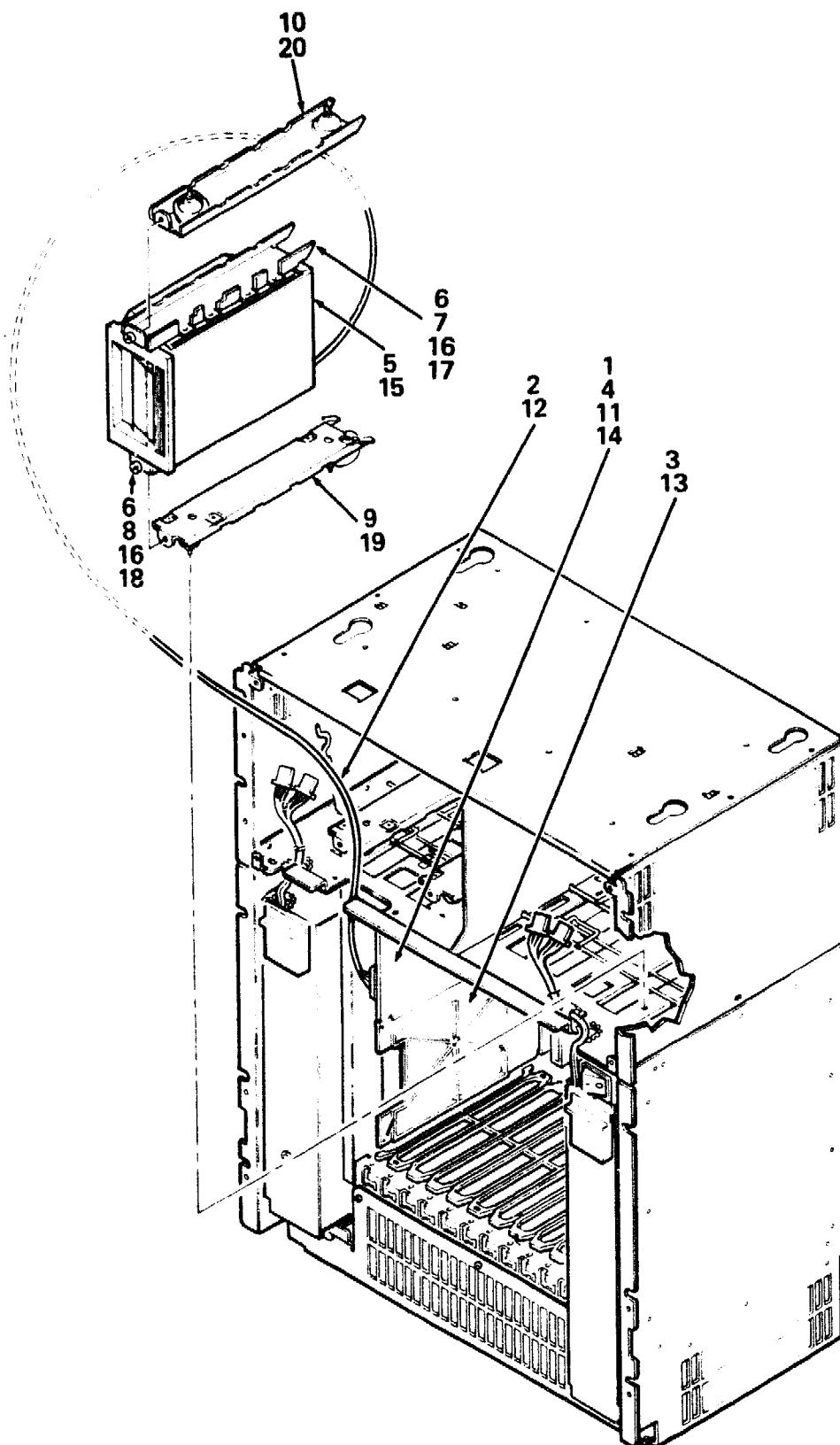


BA213-14-BD

**Figure 14. Kits, SDI Controller and Disk Drive Mounting**

PARTS LIST

FIG.& ITEM NO.	DESCRIPTION	DEC PART NO.	ECO CUT-IN	USED ON CODE	REF FIG NO.
14-	KIT, SDI CONTROLLER and DISK DRIVE MOUNTING				
14A	*KIT, SDI CONTROLLER	KDA50-SA			
1	**OCP Assembly	70-24538-01			
2	**Distribution Assembly, Cable	70-24546-01			
3	**Cable Assembly, SI Shielded Coax	17-00951-03			
4	**Cable Assembly, Flat Ribbon, 10 Conductor	17-01641-01			
5	**Module, QDA Processor, Quad	M7164-00			
6	**Module, QDA, SDA, Quad	M7165-00			
7	**Cable Assembly, Flat Ribbon, 40 Pin	70-18447-00			
8	**Cable Assembly, Flat Ribbon, 50 Pin	70-18448-00			
9	**Panel Assembly, Front	70-24534-01			
10	**Harness Assembly, Right Power	17-01362-01			
11	**Harness Assembly, Left Power	17-01362-02			
12	**Label, "RA70 OCP"	36-28130-01			
13	**Label, "Module Number (M7164)" (See Note)	36-26883-46			
14	**Label, "Module Number (M7165)" (See Note)	36-26883-47			
*****					
14B	*KIT, RA70E DISK DRIVE MOUNTING	RA70E-SA			
15	**DISK DRIVE, 280 MB 5.25 inch WINCHESTER (See IPB Manual EK-RA70A-IP)	RA70-A			
16	**Cable Assembly, Flat, 04 Conductor	17-01503-01			
17	**Cable Assembly, Flat, 20 Conductor	17-00847-06			
18	**Bracket, Top Drive	70-24559-01			
19	**Bracket, Bottom Drive	70-24559-02			
20	**Shock Assembly, Top	70-23997-05			
21	**Shock Assembly, Bottom	70-23997-06			
22	***Screw, Sems Phi Pan Hd No. 6-32 x 5/16	90-10155-00			
	***Screw, Sems Slotted Shoulder Hd. No. 6-32 x 1/2	12-27771-01			
	Note: Label placement is on Module Bulkhead.				



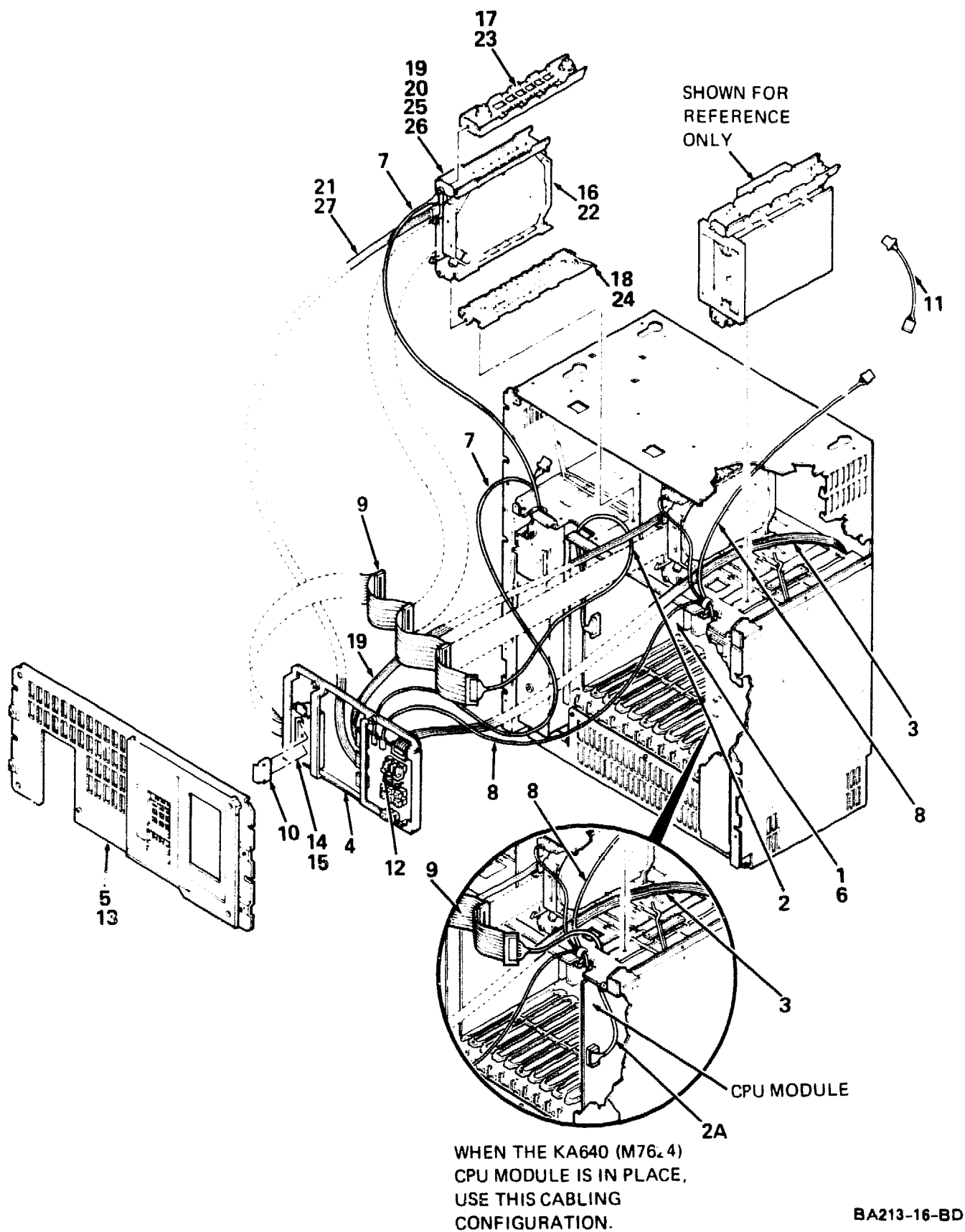
BA213-15-BD

**Figure 15. Kits, Q-Bus Controller and Tape Drive Mounting**

PARTS LIST

FIG.& ITEM NO.	DESCRIPTION	DEC PART NO.	ECO CUT-IN	USED ON CODE	REF FIG NO.
15-	KITS, Q-bus CONTROLLER and TAPE DRIVE MOUNTING				
15A	*KIT, Q-bus CONTROLLER	TQK50-SA			
1	**Module, Q-bus Tape Controller	M7546-00			
2	**Cable Assembly	17-01363-01			
3	**Panel, Blank Dual	74-33507-01			
4	**Label, "Module Number" (See Note)	36-26883-11			
	**Label, "BA2XX Rev" (Rolled) (Not Shown)	36-29163-07			
*****					
15B	*KIT, TK50 TAPE DRIVE MOUNTING	TK50E-SA			
5	**Tape Drive TK50 w/o Skid Plate (See IPB Manual EK-OTK50-IP)	TK50-EA			
6	**Screw, Phi Flat Hd No. 6-32 x 5/16	90-08404-02			
	**Screw, Slotted Shoulder Hd No. 6-32 x 1/2	12-27771-01			
7	**Bracket, Top Drive	74-33573-01			
8	**Bracket, Bottom Drive	74-33573-02			
9	**Shock Assembly, Bottom	70-25452-03			
10	**Shock Assembly, Top	70-25452-04			
	**Label, "Warning" (Not Shown)	36-29342-01			
*****					
15C	*KIT, Q-bus CONTROLLER	TQK70-SA			
11	**Module, Tape Controller	M7559-00			
12	**Cable Assembly	17-01363-01			
13	**Panel, Blank Dual	74-33507-01			
14	**Label, "Module Number" (See Note)	36-26883-45			
	**Label, "BA2XX Rev" (Rolled) (Not Shown)	36-29163-07			
*****					
15D	*KIT, TK70 TAPE DRIVE MOUNTING	TK70E-SA			
15	**Tape Drive TK70 w/o Skid Plate (See IPB Manual EK-TK70A-IP)	TK70-EA			
16	**Screw, Phi Flat Hd No. 6-32 x 5/16	90-08404-02			
	**Screw, Slotted Shoulder Hd No. 6-32 x 1/2	12-27771-01			
17	**Bracket, Top Drive	74-33573-01			
18	**Bracket, Bottom Drive	74-33573-02			
19	**Shock Assembly, Bottom	70-25452-03			
20	**Shock Assembly, Top	70-25452-04			
21	**Label, "S-Box TK Cartridge Removal" (Not Shown)	36-28182-01			
	**Label, "Warning" (Not Shown)	36-29342-01			
Note: Label placement is on Module Bulkhead.					





**Figure 16. Kit, Controller and Q-Bus Mounting**

**PARTS LIST**

FIG.& ITEM NO.	DESCRIPTION	DEC PART NO.	ECO CUT-IN	USED ON CODE	REF FIG NO.
16-	KIT, CONTROLLER and DISK DRIVE MOUNTING				
16A	*KIT, KFQSA-S DSSI Q-BUS CONTROLLER	KFQSA-SA			
1	**Module, DSSI Controller RF and TF	M7769-00			
2	**Cable Assembly, Round, 50 Conductor	17-01931-01			
2A	**Cable Assembly, Round, 50 Conductor	17-02059-01			
3	**Cable Assembly, Flat Ribbon, 10 Conductor	17-01964-01			
	**Tie, Cable (Not Shown)	90-07032-00			
4	**OCP Assembly	70-25752-01			
5	**Panel Assembly, Front (DSSI)	70-25750-01			
6	**Label, "Module Number" (See Note)	36-26883-57			
7	**Harness Assembly, Left Power	17-01989-01			
8	**Harness Assembly, Right Power	17-01990-01			
9	**Cable Assembly, Flat Ribbon, 50 Pin Daisy Chain	17-01836-01			
10	**Plug, External Terminator	12-29258-01			
11	**Cable Assembly, TK Power 5 Pin to 4 Pin	17-01937-01			
12	**Lens, Encoder Set	12-28766-19			
13	**Label, "Control Panel	36-29341-01			
14	**Plate Assembly, Connector	70-26206-01			
15	**Screw, Mach Flat Hd (Metric No. 02.5 x .08)	90-10917-01			
	*****	*****			
16B	*KIT, RF30 DISK DRIVE MOUNTING w/CABLES	RF30E-SA			
16	**DISK DRIVE, HALF HEIGHT w/o SKID PLATE	RF30-EA			
	***Module, Drive	54-18247-01			
	***Mechanics, Drive	70-23536-01			
17	**Shock Assembly, Top	70-25452-02			
18	**Shock Assembly, Bottom	70-25452-01			
19	**Bracket, Bottom and Top Drive	74-36498-01			
20	***Screw, Slotted Shoulder Hd No. 6-32 x 1/2	12-27771-01			
	***Screw, Mach Flat Hd No. 6-32 x 5/32	90-00039-28			
21	**Cable Assembly, Flat Ribbon, 10 Conductor	17-01936-01			
	*****	*****			
16C	*KIT, RF71 DISK DRIVE MOUNTING w/CABLE	RF71E-SA			
22	**DISK DRIVE, w/o SKID PLATE	RF71-EA			
	***Module, Drive	54-18316-02			
	***Mechanics, Drive	70-23537-01			
23	**Shock Assembly, Top	70-25452-04			
24	**Shock Assembly, Bottom	70-25452-03			
25	**Bracket, Bottom and Top Drive	74-36498-01			
26	***Screw, Slotted Shoulder Hd No. 6-32 x 1/2	12-27771-01			
	***Screw, Mach Flat Hd No. 6-32 x 5/32	90-00039-28			
27	**Cable Assembly, Flat Ribbon, 10 Conductor	17-01936-01			
	Note: Label placement is on Module Bulkhead.				

Ω

## **PART NUMBER/DESCRIPTION INDEX**



**INDEX BY DEC PART NUMBER  
BA213 ENCLOSURE**

<b>PART NO.</b>	<b>DESCRIPTION</b>	<b>FIG NO.</b>	<b>ITEM NO.</b>
12-12167-01	Connector, (P1) Universal Socket Mate-N-Lok	9	5
12-12170-00	Terminal, (P1) Socket Contact Mate-N-Lok	9	6
12-15815-00	Connector, (P2) IDC	9	7
12-17119-01	Key, Plastic	1	Not Shown
12-17874-02	Connector, (J3) 3-Pin Power Receptacle 10A, 250V	5	15
12-19912-06	Circuit Breaker	4	3
12-21249-04	Clip, Wire Routing	5	10
12-21249-06	Clip, Wire Routing (Replaces 12-21249-04)	2	8
12-21262-05	Switch, Rocker	6	2
12-23609-04	Fan, Tube Axial 4 1/2 inch	7	2
12-25469-03	Grommet	3	7
12-25469-04	Grommet	5	8
12-25571-01	Connector, (P3) Power Receptacle	9	1
12-25867-01	Terminal, (P3) Power	9	3
12-26555-01	Terminal, Faston	9	8
12-26858-01	Terminal, (P3), 24-Pin 20AWG	9	4
12-26858-02	Terminal, (P3) Pin Contact	9	2
12-26868-01	Screw, Thread Rolling Shoulder	10	11
12-26868-01	Screw, Thread Rolling Shoulder	12	5
12-26912-01	Card Guide	3	6
12-26922-01	Finger, Grounding	3	10
12-26922-01	Finger, Grounding	6	4
12-26922-01	Finger, Grounding	4	14
12-27034-01	Screw, Shoulder No. 8-32	6	9
12-27034-01	Screw, Shoulder No. 8-32	5	13
12-27235-02	Spring, Compression	4	5
12-27445-01	Spring, Compression	4	11
12-27446-01	Bushing, Captive Screw	4	10
12-27451-01	Screw, Slotted Filister Hd No. 6-32 x 5/16	3	14
12-27771-01	Screw, Slotted Shoulder Hd No. 6-32 x 1/2	16	20
12-27771-01	Screw, Slotted Shoulder Hd No. 6-32 x 1/2	15	6
12-27771-01	Screw, Slotted Shoulder Hd No. 6-32 x 1/2	14	22
12-27771-01	Screw, Slotted Shoulder Hd No. 6-32 x 1/2	16	26
12-27771-01	Screw, Slotted Shoulder Hd No. 6-32 x 1/2	13	15
12-27771-01	Screw, Slotted Shoulder Hd No. 6-32 x 1/2	15	16
12-27771-01	Screw, Slotted Shoulder Hd No. 6-32 x 1/2	13	23
12-27772-01	Screw, Shoulder No. 6-32 x 1/2 (Replaces 12-27771-01)	4	13
12-28766-19	Lens, Encoder Set	16	12
12-29258-01	Plug, External Terminator	16	10
12-30239-01	Screw, Captive No. 6-32 (added)	4	18
12-30421-01	Washer, Retaining (Replaces 12-27764-01)	5	17
12-30421-01	Washer, Retaining (added)	4	18
12-30421-01	Washer, Retaining (Replaces 12-27764-01)	4	9
17-00083-43	Cord, Power	1	8
17-00282-03	Cable Assembly, Flat Ribbon, 20 Conductor	13	16
17-00282-03	Cable Assembly, Flat Ribbon, 20 Conductor	13	24
17-00286-03	Cable Assembly, Flat Ribbon, 34 Conductor	13	25
17-00286-03	Cable Assembly, Flat Ribbon, 34 Conductor	13	17
17-00847-06	Cable Assembly, Flat, 20 Conductor	14	17
17-00951-03	Cable Assembly, SI Shielded Coax	14	3
17-01360-01	Cable Assembly	2	7
17-01361-01	Cable Assembly, Round, 50 Conductor	13	2
17-01362-01	Harness Assembly, Right Power	14	10
17-01362-01	Harness Assembly	1	20
17-01362-01	Harness Assembly, Right Power	13	9

**INDEX BY DEC PART NUMBER**  
**BA213 ENCLOSURE**

<b>PART NO.</b>	<b>DESCRIPTION</b>	<b>FIG NO.</b>	<b>ITEM NO.</b>
17-01362-02	Harness Assembly, Left Power	14	11
17-01362-02	Harness Assembly, Left Power	13	8
17-01363-01	Cable Assembly	15	12
17-01363-01	Cable Assembly	15	2
17-01469-01	Harness Assembly, Wire	6	5
17-01503-01	Cable Assembly, Flat, 04 Conductor	14	16
17-01641-01	Cable Assembly, Flat Ribbon, 10 Conductor	14	4
17-01641-01	Cable Assembly, Flat Ribbon, 10 Conductor	13	3
17-01836-01	Cable Assembly, Flat Ribbon, 50 Pin Daisy Chain	16	9
17-01931-01	Cable Assembly, Round, 50 Conductor	16	2
17-01936-01	Cable Assembly, Flat Ribbon, 10 Conductor	16	21
17-01936-01	Cable Assembly, Flat Ribbon, 10 Conductor	16	27
17-01937-01	Cable Assembly, TK Power 5 Pin to 4 Pin	16	11
17-01964-01	Cable Assembly, Flat Ribbon, 10 Conductor	16	3
17-01989-01	Harness Assembly, Left Power	16	7
17-01990-01	Harness Assembly, Right Power	16	8
17-02059-01	Cable Assembly, Round, 50 Conductor	16	2A
36-10267-02	Label, "Danger High Voltage"	4	Not Shown
36-12680-00	Label, "Ground Symbol"	5	Not Shown
36-12680-02	Label, "Ground Symbol w/Circle"	5	Not Shown
36-16073-00	Label, "ID"	9	11
36-17905-16	Label, "Warning Equipment Rating 100-120V"	1	Not Shown
36-17905-17	Label, "Warning Equipment Rating 220-240V"	1	Not Shown
36-18460-05	Label, "Blank Bar Code"	5	Not Shown
36-18460-05	Label, "Blank Bar Code"	4	Not Shown
36-26511-01	Label, "Power Supply H7868-A"	4	Not Shown
36-26511-02	Label, "Power Supply H7868-B"	4	Not Shown
36-26883-10	Label, "Module Number"	13	7
36-26883-11	Label, "Module Number"	15	4
36-26883-17	Label, "Module Number M9060-YA"	1	Not Shown
36-26883-45	Label, "Module Number"	15	14
36-26883-46	Label, "Module Number (M7164)"	14	13
36-26883-47	Label, "Module Number (M7165)"	14	14
36-26883-57	Label, "Module Number"	16	6
36-27329-01	Label, "Serial/Model 100V Made in USA"	1	Not Shown
36-27329-02	Label, "Serial/Model 100V Made in UK"	1	Not Shown
36-27329-03	Label, "Serial/Model 220V Made in USA"	1	Not Shown
36-27329-04	Label, "Serial/Model 220V Made in UK"	1	Not Shown
36-27354-25	Label, "Logo Model"	1	Not Shown
36-27463-01	Label, "H7868-A"	4	Not Shown
36-27463-02	Label, "H7868-B"	4	Not Shown
36-27838-28	Label, "Pedestal, USA 220V"	1	Not Shown
36-27838-29	Label, "Pedestal, UK 220V"	1	Not Shown
36-27838-30	Label, "Pedestal, UK 100V"	1	Not Shown
36-27838-31	Label, "Pedestal, USA 100V"	1	Not Shown
36-27923-01	Label, "S-Box MU"	1	Not Shown
36-28130-01	Label, "RA70 OCP"	14	12
36-28182-01	Label, "S-Box TK Cartridge Removal" (Not Shown)	15	21
36-29163-05	Label, "BA2XX Rev" (Rolled) (added)	4	Not Shown
36-29163-07	Label, "BA2XX Rev" (Rolled) (Not Shown)	15	Not Shown
36-29163-07	Label, "BA2XX Rev" (Rolled) (Not Shown)	15	Not Shown
36-29341-01	Label, "Control Panel"	16	13
36-29342-01	Label, "Warning" (Not Shown)	15	Not Shown
36-29342-01	Label, "Warning" (Not Shown)	15	Not Shown

**INDEX BY DEC PART NUMBER  
BA213 ENCLOSURE**

<b>PART NO.</b>	<b>DESCRIPTION</b>	<b>FIG NO.</b>	<b>ITEM NO.</b>
47-00042-01	Screwdriver, Flat Blade	1	Not Shown
54-16791-01	Backplane, 12 Slot Q-Bus	8A	3
54-16791-01	Backplane, 12 Slot Q-Bus	8	3
54-16791-02	Backplane, 12 Slot BA200 (added)	8A	4
54-16879-01	Module, Power Supply	4	1
54-17079-01	Module, Dual Power Supply EMI Filter	5	2
54-18247-01	Module, Drive	16	16
54-18316-02	Module, Drive	16	22
70-18447-00	Cable Assembly, Flat Ribbon, 40 Pin	14	7
70-18448-00	Cable Assembly, Flat Ribbon, 50 Pin	14	8
70-22808-01	COVER ASSEMBLY, TOP POWER SUPPLY (Replaces 74-33976-01)	4	18
70-23366-01	HARNESS ASSEMBLY, H7868	9	N/A
70-23366-01	HARNESS ASSEMBLY, H7868	4	2
70-23536-01	Mechanics, Drive	16	16
70-23537-01	Mechanics, Drive	16	22
70-23712-01	BACKPLANE ASSEMBLY, BA213	8	N/A
70-23712-01	BACKPLANE ASSEMBLY, BA213	2	13
70-23712-01	BACKPLANE ASSEMBLY, BA213	8A	N/A
70-23712-02	BACKPLANE ASSEMBLY, BA213	8A	N/A
70-23769-01	INPUT ASSEMBLY, FILTER	2	10
70-23769-01	FILTER ASSEMBLY, INPUT	5	N/A
70-23770-01	Jumper Assembly, 2-Pin Mate-N-Lock, 120V	4	7
70-23974-01	Weldment Assembly, Top	3	15
70-23981-01	Bulkhead Assembly, Front	1	11
70-23982-01	Bulkhead Assembly, Front Dual	1	4
70-23982-02	Bulkhead Assembly, Front Dual	1	2
70-23995-01	Panel, Front Assembly	13	6
70-23995-04	Panel Assembly, Front	1	13
70-23996-01	Filler, Power Supply Assembly	2	11
70-23997-03	Shock Assembly, Top	13	19
70-23997-04	Shock Assembly, Bottom	13	20
70-23997-05	Shock Assembly, Top	14	20
70-23997-06	Shock Assembly, Bottom	14	21
70-23998-01	FAN ASSEMBLY	7	N/A
70-23998-01	FAN ASSEMBLY	2	9
70-23999-01	SWITCH ASSEMBLY	6	N/A
70-23999-01	SWITCH ASSEMBLY	2	5
70-24001-01	Wiring Assembly, Filter	5	6
70-24004-01	Jumper, AC Input	5	3
70-24004-02	Jumper, AC Input	5	4
70-24007-01	Jumper, AC Input Ground	5	5
70-24037-01	ENCLOSURE ASSEMBLY, SHELL	10	N/A
70-24037-01	ENCLOSURE ASSEMBLY, SHELL	1	9
70-24041-01	PANEL ASSEMBLY, FRONT	11	N/A
70-24041-01	PANEL ASSEMBLY, FRONT	1	10
70-24046-01	BASE ASSEMBLY	12	N/A
70-24046-01	BASE ASSEMBLY	1	5
70-24047-01	Weldment, Bottom Pan	3	1
70-24054-01	Bracket Assembly, Shipping	3	13
70-24227-01	ENCLOSURE ASSEMBLY, BA213 1 PS 120V	2	N/A
70-24227-01	ENCLOSURE ASSEMBLY, BA213 1 PS 120V	1	1
70-24227-02	ENCLOSURE ASSEMBLY, BA213 1 PS 240V	2	N/A
70-24227-02	ENCLOSURE ASSEMBLY, BA213 1 PS 240V	1	1

# INDEX BY DEC PART NUMBER BA213 ENCLOSURE

PART NO.	DESCRIPTION	FIG NO.	ITEM NO.
70-24227-03	ENCLOSURE ASSEMBLY, BA213 2 PS 120V	2	N/A
70-24227-03	ENCLOSURE ASSEMBLY, BA213 2 PS 120V	1	1
70-24227-04	ENCLOSURE ASSEMBLY, BA213 2 PS 240V	1	1
70-24227-04	ENCLOSURE ASSEMBLY, BA213 2 PS 240V	2	N/A
70-24249-01	SDB Assembly	13	4
70-24255-01	FRAME ASSEMBLY, BA213	3	N/A
70-24255-01	FRAME ASSEMBLY, BA213	2	1
70-24263-01	Hardware, Wall Mount	1	Not Shown
70-24263-02	Hardware, Rack Mount	1	Not Shown
70-24316-06	KIT, BIZ ACCESSORIES	1	Not Shown
70-24534-01	Panel Assembly, Front	14	9
70-24538-01	OCP Assembly	14	1
70-24546-01	Distribution Assembly, Cable	14	2
70-24559-01	Bracket, Top Drive	14	18
70-24559-02	Bracket, Bottom Drive	14	19
70-25452-01	Shock Assembly, Bottom	16	18
70-25452-02	Shock Assembly, Top	16	17
70-25452-03	Shock Assembly, Bottom	15	19
70-25452-03	Shock Assembly, Bottom	16	24
70-25452-03	Mount Assembly, Bottom Shock (Replaces 70-23997-01)	1	17
70-25452-03	Shock Assembly, Top	13	11
70-25452-03	Shock Assembly, Bottom	15	9
70-25452-04	Shock Assembly, Top	15	10
70-25452-04	Shock Assembly, Top	16	23
70-25452-04	Mount Assembly, Top Shock (Replaces 70-23997-02)	1	18
70-25452-04	Shock Assembly, Bottom	13	12
70-25452-04	Shock Assembly, Top	15	20
70-25721-01	Panel Assembly, Access	2	14
70-25750-01	Panel Assembly, Front (DSSI)	16	5
70-25752-01	OCP Assembly	16	4
70-26206-01	Plate Assembly, Connector	16	14
74-33416-02	Enclosure, Power Supply (Replaces 74-33416-01)	4	17
74-33417-01	Cover, Power Supply	4	20
74-33418-01	Pad, Insulator	4	8
74-33507-01	Panel, Blank Dual	15	13
74-33507-01	Panel, Blank Dual	15	3
74-33507-01	Panel, Blank Dual	13	5
74-33564-01	Card Guide, 6 Slot	3	5
74-33565-01	Bracket, Fan	7	1
74-33566-01	Panel, Backplane Support	8	1
74-33569-01	Enclosure, Side	3	22
74-33571-01	Cover, Top	3	25
74-33573-01	Bracket, Top Drive	15	17
74-33573-01	Bracket, Top Drive	13	22
74-33573-01	Bracket, Top Drive	15	7
74-33573-01	Bracket, Top Drive	13	14
74-33573-02	Bracket, Bottom Drive	15	18
74-33573-02	Bracket, Bottom Drive	15	8
74-33573-02	Bracket, Bottom Drive	13	21
74-33573-02	Bracket, Bottom Drive	13	13
74-33575-01	Panel, Bottom	3	12
74-33646-01	Cover, Top	10	10
74-33647-01	Panel, Right Side	10	9
74-33648-01	Panel, Front	11	1

**INDEX BY DEC PART NUMBER**  
**BA213 ENCLOSURE**

<b>PART NO.</b>	<b>DESCRIPTION</b>	<b>FIG NO.</b>	<b>ITEM NO.</b>
74-33650-01	Base, Lower	12	1
74-33651-01	Panel, Rear	10	4
74-33694-01	Panel, Left Side	10	5
74-33854-01	Fastener, Turn	12	8
74-33854-01	Fastener, Turn	1	16
74-33962-01	Support, AC Filter	5	1
74-33963-01	Cover, A/C Right (Replaces 70-24234-01)	6	10
74-33966-01	Box, Switch	6	1
74-33971-01	Filler, Gap	3	9
74-33973-01	Support, Center	3	16
74-33974-01	Tray, AC Filter	3	2
74-33975-01	Channel, A/C Right (Replaces 70-24234-01)	6	3
74-33976-02	Cover, Top Power Supply (added)	4	18
74-33977-01	Foam, Top	3	18
74-33977-02	Foam, Top Right	3	19
74-33977-03	Foam, Top	3	20
74-33977-04	Foam, Top	3	21
74-33978-01	Foam, Back	3	17
74-33980-01	Insulator, Backplane	8A	2
74-33980-01	Insulator, Backplane	8	2
74-34061-01	Door	11	3
74-34062-01	Channel, Front Panel	11	4
74-34063-01	Tumbler	11	11
74-34064-01	Latch, Pull	11	8
74-34065-01	Latch, Slide	11	9
74-34066-01	Spring, Channel	11	5
74-34067-01	Bezel, Switch	11	2
74-34068-01	Wheel, Base	12	2
74-34069-01	Shaft, Wheel	12	3
74-34123-01	Bracket, Top Right Hand	11	12
74-34123-02	Bracket, Top Left Hand	11	13
74-34124-01	Bracket, Bottom Right Hand	11	14
74-34124-02	Bracket, Bottom Left Hand	11	15
74-34125-01	Bracket, Side	10	2
74-34126-01	Bracket, Corner	10	1
74-34363-01	Stop, Door Position	11	6
74-34424-01	Sleeve	10	6
74-34425-30	Nameplate, BA213	1	21
74-34426-01	Logo	11	17
74-34431-01	Support, Spring	4	4
74-34432-01	Bracket, Wall Mount	1	Not Shown
74-34638-01	Support, Mounting	1	Not Shown
74-34846-01	Support, Label	12	6
74-35417-01	Switch, Frame	1	14
74-36425-01	Panel, 5 1/4" Tape Drive Filler	1	19
74-36498-01	Bracket, Bottom and Top Drive	16	25
74-36498-01	Bracket, Bottom and Top Drive	16	19
74-36556-01	Bracket, Power Supply (deleted)	4	15
74-37040-01	Plate, Cover (added)	2	16
74-39621-01	Support, Top Card Cage (Replaces 74-33560-01)	3	11
74-39622-01	Card Cage, Bottom (Replaces 74-33561-01)	3	3
74-39623-01	Panel, Left Side (Replaces 74-33559-01)	3	24
74-39624-01	Panel, Right Side (Replaces 74-33558-01)	3	23
74-39625-01	Support, Fan (Replaces 74-33562-01)	3	4
74-39626-01	Panel, Backplane Support	8A	1
74-39818-01	Washer, Shoulder	8A	7



**INDEX BY DEC PART NUMBER**  
**BA213 ENCLOSURE**

<b>PART NO.</b>	<b>DESCRIPTION</b>	<b>FIG NO.</b>	<b>ITEM NO.</b>
90-00030-40	Rivet	3	8
90-00039-28	Screw, Mach Flat Hd No. 6-32 x 5/32	16	26
90-00039-28	Screw, Mach Flat Hd No. 6-32 x 5/32	16	20
90-00063-78	Screw, Self Tap Truss Hd No. 6 x 5/16	8	4
90-00063-78	Screw, Self Tap Truss Hd No. 6 x 5/16	2	15
90-00063-78	Screw, Self-Tap Truss Hd No. 6 x 5/16	8A	5
90-06032-01	Screw, Phi Pan Hd No. 6-32 x 2	7	4
90-06557-00	Nut, Kep No. 4-40	5	14
90-06565-00	Nut, Kep No. 10-32	5	12
90-06565-00	Nut, Kep No. 10-32	6	8
90-06661-00	Washer, Flat	1	7
90-06661-00	Washer, Flat	10	7
90-06664-00	Washer, Flat	5	11
90-06664-00	Washer, Flat	6	7
90-07031-00	Tie, Cable	6	6
90-07031-00	Tie, Cable	5	7
90-07031-00	Tie, Cable	9	10
90-07031-00	Tie, Cable (deleted)	4	16
90-07032-00	Tie, Cable (Not Shown)	16	Not Shown
90-07032-00	Tie, Cable (deleted)	2	4
90-07064-00	Plug, Button (added)	2	12
90-07064-00	Plug, Button	1	15
90-07649-00	Washer, External Tooth Lock No. 6	4	12
90-07786-00	U-Nut, Retainer	1	Not Shown
90-08055-00	Nut, Kep No. 6-32	4	6
90-08185-00	Nut, Kep No. 6-32	2	6
90-08185-00	Nut, Kep No. 6-32 x 1/4 (added)	2	17
90-08264-00	Clamp, Cable (deleted)	2	3
90-08404-02	Screw, Mach Flat Phi Hd No. 6-32 x 5/16	15	6
90-08404-02	Screw, Mach Flat Phi Hd No. 6-32 x 5/16	13	15
90-08404-02	Screw, Phi Flat Hd No. 6-32 x 5/16	15	16
90-08404-02	Screw, Mach Flat Phi Hd No. 6-32 x 5/16	13	23
90-08525-01	Bumper, Square Rubber	8A	6
90-08525-01	Bumper, Square Rubber	8	5
90-09228-10	Screw, Sems Phi Pan Hd No. 10-32 x 3/8	1	Not Shown
90-09257-05	Ring, Retainer	11	10
90-09282-00	Screw, Sems Phi Pan Hd No. 10-32 x 15/16	1	12
90-09282-00	Screw, Sems Phi Pan Hd No. 10-32 x 5/16	12	9
90-09385-00	Pin, Roll	12	4
90-09643-00	Screw, Sems Phi Pan Hd No. 4-40 x 3/8 (deleted)	4	19
90-09700-00	Screw, Sems Phi Pan Hd No. 10-32 x 1/2	1	Not Shown
90-09800-04	Screw, Self-Tap Phi Pan Hd No. 8-16 x 3/8	11	16
90-09800-04	Screw, Self-Tap Phi Pan Hd No. 8-16 x 3/8	10	3
90-09800-06	Screw, Phi Pan Hd Self-Tap No. 6-19 x 3/8	12	7
90-09800-06	Screw, Phi Pan Hd No. 6-19 x 3/8	11	7
90-09800-08	Screw, Self-Tap Phi Pan Hd No. 8-16 x 1/2	1	6
90-09800-08	Screw, Self-Tap Phi Pan Hd No. 8-16 x 1/2	10	8
90-09984-07	Screw, Sems Phi Pan Hd No. 6-32 x 5/16	4	21
90-09984-07	Screw, Sems Phi Pan Hd No. 6-32 x 5/16	5	9
90-10115-00	Nut, Well No. 6-32	7	3
90-10155-00	Screw, Sems Phi Pan Hd No. 6-32 x 5/16	14	22
90-10917-01	Screw, Mach Flat Hd (Metric No. 02.5 x .08)	16	15
90-10971-01	Screw, Mach Phi Truss Hd No. 6 x 5/16 (Replaces 90-00063-78)	5	16

# **INDEX BY DEC PART NUMBER** **BA213 ENCLOSURE**

<b>PART NO.</b>	<b>DESCRIPTION</b>	<b>FIG NO.</b>	<b>ITEM NO.</b>
91-07786-00	Wire, Strand Black, 18AWG	9	9
91-07786-11	Wire, Strand Brown, 18AWG	9	9
91-07786-66	Wire, Strand Blue, 18AWG	9	9
91-07796-33	Wire, Strand Orange, 22AWG	9	9
91-07796-99	Wire, Strand White, 22AWG	9	9
91-07828-54	Wire, Strand Yellow/Green, 18AWG	9	9
BA213-A2	BA213-A2 1 PS 120V w/o Skins	1	N/A
BA213-A3	BA213-A3 1 PS 240V w/o Skins	1	N/A
BA213-B2	BA213-B2 2 PS 120V w/o Skins	1	N/A
BA213-B3	BA213-B3 2 PS 240V w/o Skins	1	N/A
BA213-E3	BA213-E3 2 PS 240V w/Skins	1	N/A
BA213-EA	BA213-EA 1 PS 120V w/Skins	1	N/A
BA213-F3	BA213-F3 2 PS 240V w/o Skins Rack Mount/ Wall Mount Kit	1	N/A
BA213-FA	BA213-FA 2 PS 240V w/o Skins Rack Mount/ Wall Mount Kit	1	N/A
BA213-RA	KIT, RACK MOUNT BA213 LARGE S-BOX	1	Not Shown
BA213-WA	KIT, WALL MOUNT BA213 LARGE S-BOX	1	Not Shown
EK-BA200-IN	Guide, Rack Mount Installation	1	Not Shown
EK-BA200-IN	Guide, Wall Mount Installation	1	Not Shown
H7868-A	POWER SUPPLY ASSEMBLY, H7868 100/120V	2	2
H7868-A	POWER SUPPLY ASSEMBLY, H7868 100/120V	4	N/A
H7868-B	POWER SUPPLY ASSEMBLY, H7868 220/240V	2	2
H7868-B	POWER SUPPLY ASSEMBLY, H7868 220/240V	4	N/A
KDA50-SA	KIT, SDI CONTROLLER	14	N/A
KFQSA-SA	KIT, KFQSA-SA DSSI Q-BUS CONTROLLER	16	N/A
M7164-00	Module, QDA Processor, Quad	14	5
M7165-00	Module, QDA, SDA, Quad	14	6
M7546-00	Module, Q-bus Tape Controller	15	1
M7559-00	Module, Tape Controller	15	11
M7769-00	Module, DSSI Controller RF and TF	16	1
M9060-YA	Module, Load	1	3
RA70-A	DISK DRIVE, 280 MB 5.25 inch WINCHESTER	14	15
RA70E-SA	KIT, RA70E DISK DRIVE MOUNTING	14	N/A
RD53-EA	DISK DRIVE, 5.25 inch w/No Skid Plate	13	10
RD53A-SA	KIT, RD53A DISK DRIVE MOUNTING W/CABLES	13	N/A
RD54-EA	DISK DRIVE, 5.25 inch w/No Skid Plate	13	18
RD54A-SA	KIT, RD54A DISK DRIVE MOUNTING W/CABLES	13	N/A
RF30-EA	DISK DRIVE, HALF HEIGHT w/o SKID PLATE	16	16
RF30E-SA	KIT, RF30 DISK DRIVE MOUNTING w/CABLES	16	N/A
RF71-EA	DISK DRIVE, w/o SKID PLATE	16	22
RF71E-SA	KIT, RF71 DISK DRIVE MOUNTING w/CABLE	16	N/A
RQDX3-00	Module, RD/RX Controller	13	1
RQDX3-SA	KIT, RQDX3-S Q-Bus CONTROLLER	13	N/A
TK50-EA	Tape Drive TK50 w/o Skid Plate	15	5
TK50E-SA	KIT, TK50 TAPE DRIVE MOUNTING	15	N/A
TK70-EA	Tape Drive TK70 w/o Skid Plate	15	15
TK70E-SA	KIT, TK70 TAPE DRIVE MOUNTING	15	N/A
TQK50-SA	KIT, Q-bus CONTROLLER	15	N/A
TQK70-SA	KIT, Q-bus CONTROLLER	15	N/A

**INDEX BY DEC PART DESCRIPTION**  
**BA213 ENCLOSURE**

DESCRIPTION	DEC PART NO.	FIG. NO.	ITEM NO.
BA213-A2 1 PS 120V w/o Skins	BA213-A2	1	N/A
BA213-A3 1 PS 120V w/o Skins	BA213-A3	1	N/A
BA213-B2 2 PS 120V w/o Skins	BA213-B2	1	N/A
BA213-B3 2 PS 240V w/o Skins	BA213-B3	1	N/A
BA213-E3 2 PS 240V w/Skins	BA213-E3	1	N/A
BA213-EA 1 PS 120V w/Skins	BA213-EA	1	N/A
BA213-F3 2 PS 240V w/o Skins Rack Mount/ Wall Mount Kit	BA213-F3	1	N/A
BA213-FA 2 PS 240V w/o Skins Rack Mount/ Wall Mount Kit	BA213-FA	1	N/A
BACKPLANE ASSEMBLY, BA213	70-23712-01	2	13
BACKPLANE ASSEMBLY, BA213	70-23712-02	8A	N/A
BACKPLANE ASSEMBLY, BA213	70-23712-01	8	N/A
BACKPLANE ASSEMBLY, BA213	70-23712-01	8A	N/A
Backplane, 12 Slot BA200 (added)	54-16791-02	8A	4
Backplane, 12 Slot Q-Bus	54-16791-01	8	3
Backplane, 12 Slot Q-Bus	54-16791-01	8A	3
BASE ASSEMBLY	70-24046-01	12	N/A
BASE ASSEMBLY	70-24046-01	1	5
Base, Lower	74-33650-01	12	1
Bezel, Switch	74-34067-01	11	2
Box, Switch	74-33986-01	6	1
Bracket Assembly, Shipping	70-24054-01	3	13
Bracket, Bottom and Top Drive	74-36498-01	16	25
Bracket, Bottom and Top Drive	74-36498-01	16	19
Bracket, Bottom Drive	74-33573-02	15	8
Bracket, Bottom Drive	74-33573-02	15	18
Bracket, Bottom Drive	74-33573-02	13	13
Bracket, Bottom Drive	70-24559-02	14	19
Bracket, Bottom Drive	74-33573-02	13	21
Bracket, Bottom Left Hand	74-34124-02	11	15
Bracket, Bottom Right Hand	74-34124-01	11	14
Bracket, Corner	74-34126-01	10	1
Bracket, Fan	74-33565-01	7	1
Bracket, Power Supply (deleted)	74-36556-01	4	15
Bracket, Side	74-34125-01	10	2
Bracket, Top Drive	74-33573-01	13	14
Bracket, Top Drive	74-33573-01	15	17
Bracket, Top Drive	74-33573-01	13	22
Bracket, Top Drive	74-33573-01	15	7
Bracket, Top Drive	70-24559-01	14	18
Bracket, Top Left Hand	74-34123-02	11	13
Bracket, Top Right Hand	74-34123-01	11	12
Bracket, Wall Mount	74-34432-01	1	Not Shown
Bulkhead Assembly, Front	70-23981-01	1	11
Bulkhead Assembly, Front Dual	70-23982-01	1	4
Bulkhead Assembly, Front Dual	70-23982-02	1	2
Bumper, Square Rubber	90-08525-01	8A	6
Burnper, Square Rubber	90-08525-01	8	5
Bushing, Captive Screw	12-27446-01	4	10
Cable Assembly	17-01363-01	15	2
Cable Assembly	17-01363-01	15	12
Cable Assembly	17-01360-01	2	7
Cable Assembly, Flat Ribbon, 10 Conductor	17-01964-01	16	3
Cable Assembly, Flat Ribbon, 10 Conductor	17-01936-01	16	21

**INDEX BY DEC PART DESCRIPTION  
BA213 ENCLOSURE**

DESCRIPTION	DEC PART NO.	FIG. NO.	ITEM NO.
Cable Assembly, Flat Ribbon, 10 Conductor	17-01641-01	13	3
Cable Assembly, Flat Ribbon, 10 Conductor	17-01641-01	14	4
Cable Assembly, Flat Ribbon, 10 Conductor	17-01936-01	16	27
Cable Assembly, Flat Ribbon, 20 Conductor	17-00282-03	13	16
Cable Assembly, Flat Ribbon, 20 Conductor	17-00282-03	13	24
Cable Assembly, Flat Ribbon, 34 Conductor	17-00286-03	13	25
Cable Assembly, Flat Ribbon, 34 Conductor	17-00286-03	13	17
Cable Assembly, Flat Ribbon, 40 Pin	70-18447-00	14	7
Cable Assembly, Flat Ribbon, 50 Pin	70-18448-00	14	8
Cable Assembly, Flat Ribbon, 50 Pin Daisy Chain	17-01836-01	16	9
Cable Assembly, Flat, 04 Conductor	17-01503-01	14	16
Cable Assembly, Flat, 20 Conductor	17-00847-06	14	17
Cable Assembly, Round, 50 Conductor	17-01361-01	13	2
Cable Assembly, Round, 50 Conductor	17-01931-01	16	2
Cable Assembly, Round, 50 Conductor	17-02059-01	16	2A
Cable Assembly, SI Shielded Coax	17-00951-03	14	3
Cable Assembly, TK Power 5 Pin to 4 Pin	17-01937-01	16	11
Card Cage, Bottom (Replaces 74-33561-01)	74-39622-01	3	3
Card Guide	12-26912-01	3	6
Card Guide, 6 Slot	74-33564-01	3	5
Channel, A/C Right (Replaces 70-24234-01)	74-33975-01	6	3
Channel, Front Panel	74-34062-01	11	4
Circuit Breaker	12-19912-06	4	3
Clamp, Cable (deleted)	90-08264-00	2	3
Clip, Wire Routing	12-21249-04	5	10
Clip, Wire Routing (Replaces 12-21249-04)	12-21249-06	2	8
Connector, (J3) 3-Pin Power Receptacle 10A, 250V	12-17874-02	5	15
Connector, (P1) Universal Socket Mate-N-Lok	12-12167-01	9	5
Connector, (P2) IDC	12-15815-00	9	7
Connector, (P2) Power Receptacle	12-25571-01	9	1
Cord, Power	17-00083-43	1	8
COVER ASSEMBLY, TOP POWER SUPPLY (Replaces 74-33976-01)	70-22808-01	4	18
Cover, A/C Right (Replaces 70-24234-01)	74-33963-01	6	10
Cover, Power Supply	74-33417-01	4	20
Cover, Top	74-33571-01	3	25
Cover, Top	74-33646-01	10	10
Cover, Top Power Supply (added)	74-33976-02	4	18
DISK DRIVE, 280 MB 5.25 inch WINCHESTER	RA70-A	14	15
DISK DRIVE, 5.25 inch w/No Skid Plate	RD53-EA	13	10
DISK DRIVE, 5.25 inch w/No Skid Plate	RD54-EA	13	18
DISK DRIVE, HALF HEIGHT w/o SKID PLATE	RF30-EA	16	16
DISK DRIVE, w/o SKID PLATE	RF71-EA	16	22
Distribution Assembly, Cable	70-24546-01	14	2
Door	74-34061-01	11	3
ENCLOSURE ASSEMBLY, BA213	N/A	1	N/A
ENCLOSURE ASSEMBLY, BA213 1 PS 120V	70-24227-01	1	1
ENCLOSURE ASSEMBLY, BA213 1 PS 120V	70-24227-01	2	N/A
ENCLOSURE ASSEMBLY, BA213 1 PS 240V	70-24227-02	1	1
ENCLOSURE ASSEMBLY, BA213 1 PS 240V	70-24227-02	2	N/A
ENCLOSURE ASSEMBLY, BA213 2 PS 120V	70-24227-03	2	N/A
ENCLOSURE ASSEMBLY, BA213 2 PS 120V	70-24227-03	1	1
ENCLOSURE ASSEMBLY, BA213 2 PS 240V	70-24227-04	1	1
ENCLOSURE ASSEMBLY, BA213 2 PS 240V	70-24227-04	2	N/A
ENCLOSURE ASSEMBLY, SHELL	70-24037-01	1	9

**INDEX BY DEC PART DESCRIPTION  
BA213 ENCLOSURE**

DESCRIPTION	DEC PART NO.	FIG. NO.	ITEM NO.
<b>ENCLOSURE ASSEMBLY, SHELL</b>	70-24037-01	10	N/A
Enclosure, Power Supply (Replaces 74-33416-01)	74-33416-02	4	17
Enclosure, Side	74-33569-01	3	22
<b>FAN ASSEMBLY</b>	70-23998-01	7	N/A
FAN ASSEMBLY	70-23998-01	2	9
Fan, Tube Axial 4 1/2 inch	12-23609-04	7	2
Fastener, Turn	74-33854-01	12	8
Fastener, Turn	74-33854-01	1	16
Filler, Gap	74-33971-01	3	9
Filler, Power Supply Assembly	70-23996-01	2	11
<b>FILTER ASSEMBLY, INPUT</b>	70-23769-01	5	N/A
Finger, Grounding	12-26922-01	6	4
Finger, Grounding	12-26922-01	4	14
Finger, Grounding	12-26922-01	3	10
Foam, Back	74-33978-01	3	17
Foam, Top	74-33977-04	3	21
Foam, Top	74-33977-01	3	18
Foam, Top	74-33977-03	3	20
Foam, Top Right	74-33977-02	3	19
<b>FRAME ASSEMBLY, BA213</b>	70-24255-01	3	N/A
FRAME ASSEMBLY, BA213	70-24255-01	2	1
Grommet	12-25469-03	3	7
Grommet	12-25469-04	5	8
Guide, Rack Mount Installation	EK-BA200-IN	1	Not Shown
Guide, Wall Mount Installation	EK-BA200-IN	1	Not Shown
Hardware, Rack Mount	70-24263-02	1	Not Shown
Hardware, Wall Mount	70-24263-01	1	Not Shown
Harness Assembly	17-01362-01	1	20
<b>HARNESS ASSEMBLY, H7868</b>	70-23366-01	9	N/A
<b>HARNESS ASSEMBLY, H7868</b>	70-23366-01	4	2
Harness Assembly, Left Power	17-01362-02	13	8
Harness Assembly, Left Power	17-01989-01	16	7
Harness Assembly, Left Power	17-01362-02	14	11
Harness Assembly, Right Power	17-01990-01	16	8
Harness Assembly, Right Power	17-01362-01	13	9
Harness Assembly, Right Power	17-01362-01	14	10
Harness Assembly, Wire	17-01469-01	6	5
<b>INPUT ASSEMBLY, FILTER</b>	70-23769-01	2	10
Insulator, Backplane	74-33980-01	8	2
Insulator, Backplane	74-33980-01	8A	2
Jumper Assembly, 2-Pin Mate-N-Lock, 120V	70-23770-01	4	7
Jumper, AC Input	70-24004-02	5	4
Jumper, AC Input	70-24004-01	5	3
Jumper, AC Input Ground	70-24007-01	5	5
Key, Plastic	12-17119-01	1	Not Shown
<b>KIT, BIZ ACCESSORIES</b>	70-24316-06	1	Not Shown
<b>KIT, CONTROLLER and DISK DRIVE MOUNTING</b>	N/A	16	N/A
<b>KIT, KFQSA-SA DSSI Q-BUS CONTROLLER</b>	KFQSA-SA	16	N/A
<b>KIT, Q-bus CONTROLLER</b>	TQK70-SA	15	N/A
<b>KIT, Q-bus CONTROLLER</b>	TQK50-SA	15	N/A
<b>KIT, RA70E DISK DRIVE MOUNTING</b>	RA70E-SA	14	N/A
<b>KIT, RACK MOUNT BA213 LARGE S-BOX</b>	BA213-RA	1	Not Shown

**INDEX BY DEC PART DESCRIPTION**  
**BA213 ENCLOSURE**

DESCRIPTION	DEC PART NO.	FIG. NO.	ITEM NO.
KIT, RD53A DISK DRIVE MOUNTING W/CABLES	RD53A-SA	13	N/A
KIT, RD54A DISK DRIVE MOUNTING W/CABLES	RD54A-SA	13	N/A
KIT, RF30 DISK DRIVE MOUNTING w/CABLES	RF30E-SA	16	N/A
KIT, RF71 DISK DRIVE MOUNTING w/CABLE	RF71E-SA	16	N/A
KIT, RQDX3-S Q-Bus CONTROLLER	RQDX3-SA	13	N/A
KIT, SDI CONTROLLER	KDA50-SA	14	N/A
KIT, SDI CONTROLLER and DISK DRIVE MOUNTING	N/A	14	N/A
KIT, TK50 TAPE DRIVE MOUNTING	TK50E-SA	15	N/A
KIT, TK70 TAPE DRIVE MOUNTING	TK70E-SA	15	N/A
KIT, WALL MOUNT BA213 LARGE S-BOX	BA213-WA	1	Not Shown
KITS, CONTROLLER and DISK DRIVE MOUNTING	N/A	13	N/A
KITS, Q-bus CONTROLLER and TAPE DRIVE MOUNTING	N/A	15	N/A
Label, "BA2XX Rev" (Rolled) (added)	36-29163-05	4	Not Shown
Label, "BA2XX Rev" (Rolled) (Not Shown)	36-29163-07	15	Not Shown
Label, "BA2XX Rev" (Rolled) (Not Shown)	36-29163-07	15	Not Shown
Label, "Blank Bar Code"	36-18460-05	4	Not Shown
Label, "Blank Bar Code"	36-18460-05	5	Not Shown
Label, "Control Panel"	36-29341-01	16	13
Label, "Danger High Voltage"	36-10267-02	4	Not Shown
Label, "Ground Symbol w/Circle"	36-12680-02	5	Not Shown
Label, "Ground Symbol"	36-12680-00	5	Not Shown
Label, "H7868-A"	36-27463-01	4	Not Shown
Label, "H7868-B"	36-27463-02	4	Not Shown
Label, "ID"	36-16073-00	9	11
Label, "Logo Model"	36-27354-25	1	Not Shown
Label, "Module Number (M7164)"	36-26883-46	14	13
Label, "Module Number (M7165)"	36-26883-47	14	14
Label, "Module Number M9060-YA"	36-26883-17	1	Not Shown
Label, "Module Number"	36-26883-11	15	4
Label, "Module Number"	36-26883-45	15	14
Label, "Module Number"	36-26883-57	16	6
Label, "Module Number"	36-26883-10	13	7
Label, "Pedestal, UK 100V"	36-27838-30	1	Not Shown
Label, "Pedestal, UK 220V"	36-27838-29	1	Not Shown
Label, "Pedestal, USA 100V"	36-27838-31	1	Not Shown
Label, "Pedestal, USA 220V"	36-27838-28	1	Not Shown
Label, "Power Supply H7868-A"	36-26511-01	4	Not Shown
Label, "Power Supply H7868-B"	36-26511-02	4	Not Shown
Label, "RA70 OCP"	36-28130-01	14	12
Label, "S-Box MU"	36-27923-01	1	Not Shown
Label, "S-Box TK Cartridge Removal" (Not Shown)	36-28182-01	15	21
Label, "Serial/Model 100V Made in UK"	36-27329-02	1	Not Shown
Label, "Serial/Model 100V Made in USA"	36-27329-01	1	Not Shown
Label, "Serial/Model 220V Made in UK"	36-27329-04	1	Not Shown
Label, "Serial/Model 220V Made in USA"	36-27329-03	1	Not Shown
Label, "Warning Equipment Rating 100-120V"	36-17905-16	1	Not Shown
Label, "Warning Equipment Rating 220-240V"	36-17905-17	1	Not Shown
Label, "Warning" (Not Shown)	36-29342-01	15	Not Shown
Label, "Warning" (Not Shown)	36-29342-01	15	Not Shown
Latch, Pull	74-34064-01	11	8
Latch, Slide	74-34065-01	11	9
Lens, Encoder Set	12-28766-19	16	12
Logo	74-34426-01	11	17

**INDEX BY DEC PART DESCRIPTION**  
**BA213 ENCLOSURE**

DESCRIPTION	DEC PART NO.	FIG. NO.	ITEM NO.
Mechanics, Drive	70-23537-01	16	22
Mechanics, Drive	70-23536-01	16	16
Module, Drive	54-18316-02	16	22
Module, Drive	54-18247-01	16	16
Module, DSSI Controller RF and TF	M7769-00	16	1
Module, Dual Power Supply EMI Filter	54-17079-01	5	2
Module, Load	M9060-YA	1	3
Module, Power Supply	54-16879-01	4	1
Module, Q-bus Tape Controller	M7546-00	15	1
Module, QDA Processor, Quad	M7164-00	14	5
Module, QDA, SDA, Quad	M7165-00	14	6
Module, RD/RX Controller	RQDX3-00	13	1
Module, Tape Controller	M7559-00	15	11
Mount Assembly, Bottom Shock (Replaces 70-23997-01)	70-25452-03	1	17
Mount Assembly, Top Shock (Replaces 70-23997-02)	70-25452-04	1	18
Nameplate, BA213	74-34425-30	1	21
Nut, Kep No. 10-32	90-06565-00	5	12
Nut, Kep No. 10-32	90-06565-00	6	8
Nut, Kep No. 4-40	90-06557-00	5	14
Nut, Kep No. 6-32	90-08185-00	2	6
Nut, Kep No. 6-32	90-08055-00	4	6
Nut, Kep No. 6-32 x 1/4 (added)	90-08185-00	2	17
Nut, Well No. 6-32	90-10115-00	7	3
OCP Assembly	70-25752-01	16	4
OCP Assembly	70-24538-01	14	1
Pad, Insulator	74-33418-01	4	8
Pan, Bottom	74-33575-01	3	12
Panel Assembly, Access	70-25721-01	2	14
Panel Assembly, Front	70-24534-01	14	9
PANEL ASSEMBLY, FRONT	70-24041-01	11	N/A
Panel Assembly, Front	70-23995-04	1	13
PANEL ASSEMBLY, FRONT	70-24041-01	1	10
Panel Assembly, Front (DSSI)	70-25750-01	16	5
Panel, 5 1/4" Tape Drive Filler	74-36425-01	1	19
Panel, Backplane Support	74-39626-01	8A	1
Panel, Backplane Support	74-33566-01	8	1
Panel, Blank Dual	74-33507-01	15	3
Panel, Blank Dual	74-33507-01	15	13
Panel, Blank Dual	74-33507-01	13	5
Panel, Front	74-33648-01	11	1
Panel, Front Assembly	70-23995-01	13	6
Panel, Left Side	74-33694-01	10	5
Panel, Left Side (Replaces 74-33559-01)	74-39623-01	3	24
Panel, Rear	74-33651-01	10	4
Panel, Right Side	74-33647-01	10	9
Panel, Right Side (Replaces 74-33558-01)	74-39624-01	3	23
Pin, Roll	90-09385-00	12	4
Plate Assembly, Connector	70-26206-01	16	14
Plate, Cover (added)	74-37040-01	2	16
Plug, Button	90-07064-00	1	15
Plug, Button (added)	90-07064-00	2	12
Plug, External Terminator	12-29258-01	16	10

**INDEX BY DEC PART DESCRIPTION**  
**BA213 ENCLOSURE**

DESCRIPTION	DEC PART NO.	FIG. NO.	ITEM NO.
POWER SUPPLY ASSEMBLY, H7868 100/120V	H7868-A	4	N/A
POWER SUPPLY ASSEMBLY, H7868 220/240V	H7868-B	4	N/A
POWER SUPPLY ASSEMBLY, H7868 100/120V	H7868-A	2	2
POWER SUPPLY ASSEMBLY, H7868 220/240V	H7868-B	2	2
Ring, Retainer	90-09257-05	11	10
Rivet	90-09030-40	3	8
Screw, Captive No. 6-32 (added)	12-30239-01	4	18
Screw, Mach Flat Hd (Metric No. 02.5 x .08)	90-10917-01	16	15
Screw, Mach Flat Hd No. 6-32 x 5/32	90-00039-28	16	20
Screw, Mach Flat Hd No. 6-32 x 5/32	90-00039-28	16	26
Screw, Mach Flat Phi Hd No. 6-32 x 5/16	90-08404-02	13	15
Screw, Mach Flat Phi Hd No. 6-32 x 5/16	90-08404-02	13	23
Screw, Mach Flat Phi Hd No. 6-32 x 5/16	90-08404-02	15	6
Screw, Mach Phi Truss Hd No. 6 x 5/16 (Replaces 90-00063-78)	90-10971-01	5	16
Screw, Phi Flat Hd No. 6-32 x 5/16	90-08404-02	15	16
Screw, Phi Pan Hd No. 6-19 x 3/8	90-09800-06	11	7
Screw, Phi Pan Hd No. 6-32 x 2	90-06032-01	7	4
Screw, Phi Pan Hd Self-Tap No. 6-19 x 3/8	90-09800-06	12	7
Screw, Self Tap Truss Hd No. 6 x 5/16	90-00063-78	2	15
Screw, Self Tap Truss Hd No. 6 x 5/16	90-00063-78	8	4
Screw, Self-Tap Phi Pan Hd No. 8-16 x 3/8	90-09800-04	11	16
Screw, Self-Tap Phi Pan Hd No. 8-16 x 1/2	90-09800-08	10	8
Screw, Self-Tap Phi Pan Hd No. 8-16 x 1/2	90-09800-08	1	6
Screw, Self-Tap Phi Pan Hd No. 8-16 x 3/8	90-09800-04	10	3
Screw, Self-Tap Truss Hd No. 6 x 5/16	90-00063-78	8A	5
Screw, Sems Phi Pan Hd No. 10-32 x 1/2	90-09700-00	1	Not Shown
Screw, Sems Phi Pan Hd No. 10-32 x 3/8	90-09228-10	1	Not Shown
Screw, Sems Phi Pan Hd No. 10-32 x 5/16	90-09282-00	12	9
Screw, Sems Phi Pan Hd No. 4-40 x 3/8 (deleted)	90-09643-00	4	19
Screw, Sems Phi Pan Hd No. 6-32 x 5/16	90-10155-00	14	22
Screw, Sems Phi Pan Hd No. 6-32 x 5/16	90-09984-07	4	21
Screw, Sems Phi Pan Hd No. 6-32 x 5/16	90-09984-07	5	9
Screw, Sems Phi Pan Hd No. 10-32 x 15/16	90-09282-00	1	12
Screw, Sems Slotted Shoulder Hd No. 6-32 x 1/2	12-27771-01	14	22
Screw, Shoulder No. 6-32 x 1/2 (Replaces 12-27771-01)	12-27772-01	4	13
Screw, Shoulder No. 8-32	12-27034-01	5	13
Screw, Shoulder No. 8-32	12-27034-01	6	9
Screw, Slotted Filister Hd No. 6-32 x 5/16	12-27451-01	3	14
Screw, Slotted Shoulder Hd No. 6-32 x 1/2	12-27771-01	15	6
Screw, Slotted Shoulder Hd No. 6-32 x 1/2	12-27771-01	15	16
Screw, Slotted Shoulder Hd No. 6-32 x 1/2	12-27771-01	13	23
Screw, Slotted Shoulder Hd No. 6-32 x 1/2	12-27771-01	16	20
Screw, Slotted Shoulder Hd No. 6-32 x 1/2	12-27771-01	16	26
Screw, Slotted Shoulder Hd No. 6-32 x 1/2	12-27771-01	13	15
Screw, Thread Rolling Shoulder	12-26868-01	12	5
Screw, Thread Rolling Shoulder	12-26868-01	10	11
Screwdriver, Flat Blade	47-00042-01	1	Not Shown
SDB Assembly	70-24249-01	13	4
Shaft, Wheel	74-34069-01	12	3
Shock Assembly, Bottom	70-23997-06	14	21
Shock Assembly, Bottom	70-25452-03	15	9
Shock Assembly, Bottom	70-25452-04	13	12



**INDEX BY DEC PART DESCRIPTION  
BA213 ENCLOSURE**

DESCRIPTION	DEC PART NO.	FIG. NO.	ITEM NO.
Shock Assembly, Bottom	70-25452-03	15	19
Shock Assembly, Bottom	70-23997-04	13	20
Shock Assembly, Bottom	70-25452-03	16	24
Shock Assembly, Bottom	70-25452-01	16	18
Shock Assembly, Top	70-25452-04	15	10
Shock Assembly, Top	70-25452-02	16	17
Shock Assembly, Top	70-23997-03	13	19
Shock Assembly, Top	70-23997-05	14	20
Shock Assembly, Top	70-25452-03	13	11
Shock Assembly, Top	70-25452-04	16	23
Shock Assembly, Top	70-25452-04	15	20
Sleeve	74-34424-01	10	6
Spring, Channel	74-34066-01	11	5
Spring, Compression	12-27235-02	4	5
Spring, Compression	12-27445-01	4	11
Stop, Door Position	74-34363-01	11	6
Support, AC Filter	74-33962-01	5	1
Support, Center	74-33973-01	3	16
Support, Fan (Replaces 74-33562-01)	74-39625-01	3	4
Support, Label	74-34846-01	12	6
Support, Mounting	74-34638-01	1	Not Shown
Support, Spring	74-34431-01	4	4
Support, Top Card Cage (Replaces 74-33560-01)	74-39621-01	3	11
SWITCH ASSEMBLY	70-23999-01	2	5
SWITCH ASSEMBLY	70-23999-01	6	N/A
Switch, Frame	74-35417-01	1	14
Switch, Rocker	12-21262-05	6	2
Tape Drive TK50 w/o Skid Plate	TK50-EA	15	5
Tape Drive TK70 w/o Skid Plate	TK70-EA	15	15
Terminal, (P1) Socket Contact Mate-N-Lok	12-12170-00	9	6
Terminal, (P3) Pin Contact	12-26858-02	9	2
Terminal, (P3) Power	12-25867-01	9	3
Terminal, (P3), 24-Pin 20AWG	12-26858-01	9	4
Terminal, Faston	12-26555-01	9	8
Tie, Cable	90-07031-00	9	10
Tie, Cable	90-07031-00	5	7
Tie, Cable	90-07031-00	6	6
Tie, Cable (deleted)	90-07032-00	2	4
Tie, Cable (deleted)	90-07031-00	4	16
Tie, Cable (Not Shown)	90-07032-00	16	Not Shown
Tray, AC Filter	74-33974-01	3	2
Tumbler	74-34063-01	11	11
U-Nut, Retainer	90-07786-00	1	Not Shown
Washer, External Tooth Lock No. 6	90-07649-00	4	12
Washer, Flat	90-06664-00	5	11
Washer, Flat	90-06661-00	10	7
Washer, Flat	90-06664-00	6	7
Washer, Flat	90-06661-00	1	7
Washer, Retaining (Replaces 12-27764-01)	12-30421-01	4	9
Washer, Retaining (Replaces 12-27764-01)	12-30421-01	5	17
Washer, Retaining (added)	12-30421-01	4	18
Washer, Shoulder	74-39818-01	8A	7
Weldment Assembly, Top	70-23974-01	3	15

**INDEX BY DEC PART DESCRIPTION  
BA213 ENCLOSURE**

<b>DESCRIPTION</b>	<b>DEC PART NO.</b>	<b>FIG. NO.</b>	<b>ITEM NO.</b>
Wheel, Base	74-34068-01	12	2
Wire, Strand Black, 18AWG	91-07786-00	9	9
Wire, Strand Blue, 18AWG	91-07786-66	9	9
Wire, Strand Brown, 18AWG	91-07786-11	9	9
Wire, Strand Orange, 22AWG	91-07796-33	9	9
Wire, Strand White, 22AWG	91-07796-99	9	9
Wire, Strand Yellow/Green, 18AWG	91-07828-54	9	9
Wiring Assembly, Filter	70-24001-01	5	6