

# FIELD MAINTENANCE PRINT SET

FIELD MAINT. PRINT SET KY11-LB  
CONSOLE ASSY PROGRAMMERS  
CIRCUIT ETCH BOARD KY11-LB  
CIRCUIT, INTERFACE, PROG.  
CONSOLE

B-TC-KY11-LB-1  
D-UA-KY11-LB-Ø  
D-CS-5411800-0-1  
D-CS-M7859-Ø-1

KYII-LB  
Field Maintenance  
Print Set

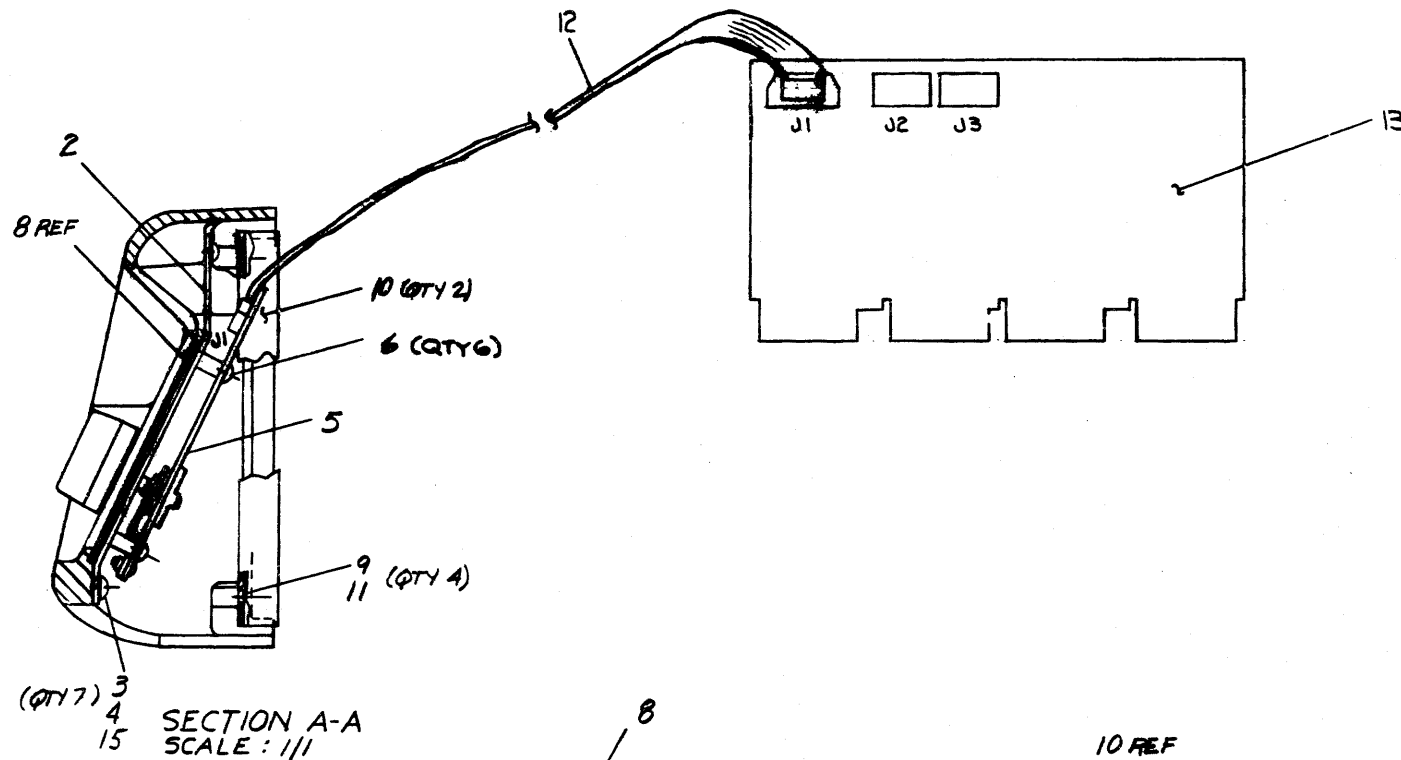
PRINT SET ORDER NO.  
MP00015

EN.01124-18-M675-(337

THIS DRAWING AND SPECIFICATIONS HEREIN ARE THE PROPERTY OF DIGITAL EQUIPMENT CORPORATION AND SHALL NOT BE REPRODUCED OR COPIED OR USED IN WHOLE OR IN PART AS THE BASIS FOR THE MANUFACTURE OR SALE OF ITEMS WITHOUT WRITTEN PERMISSION.  
COPYRIGHT © , DIGITAL EQUIPMENT CORPORATION

NOTES:

- ITEM \*14 NOT SHOWN ON THIS ASSY, TO BE SUPPLIED AS LOOSE PIECE - 2 REQ'D
- PART \*7413657-10 MAY BE USED WHEN 7415599 IS NOT AVAILABLE.



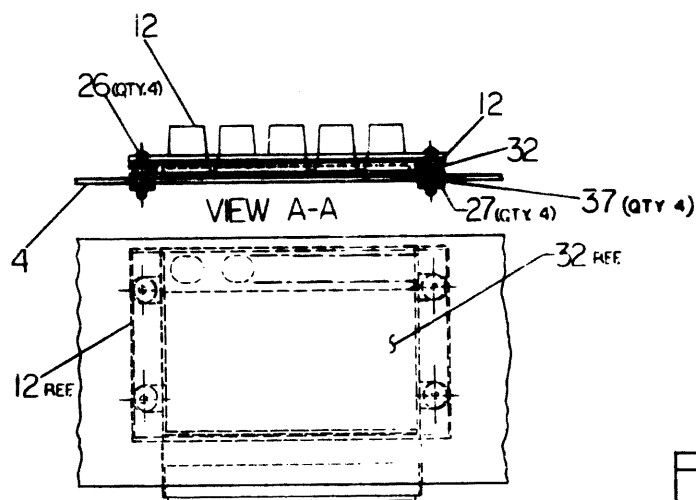
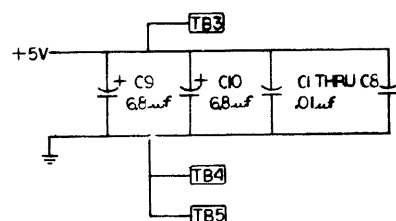
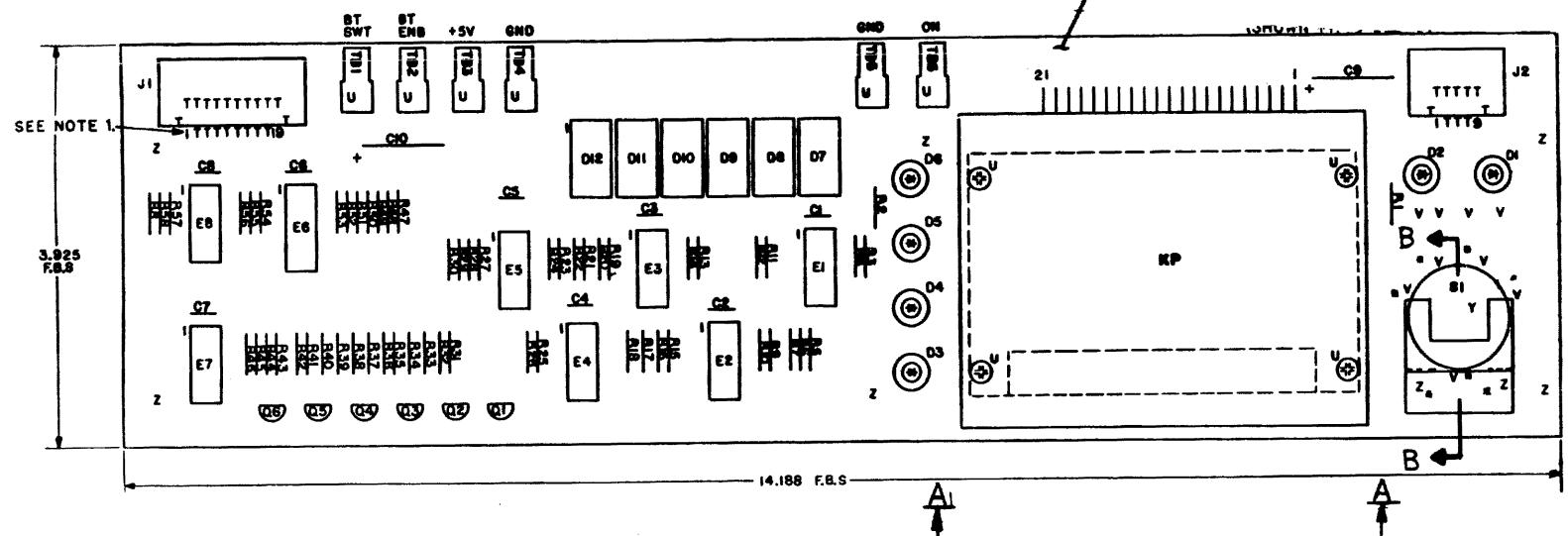
7	WASHER, FLAT, 375x187x.036	9006660	15
2	CABLE CONS TO BACKPLANE	C-1A-7011411-1D-0	14
1	INTERFAC. PROG CNSL	D-CS-M7859-04	13
1	CABLE, CNSL TO M7859	D-1A-7012214-0-0	12
4	SPACER HEX 1/4x.38L	9006802	11
2	BRKT FILTER SUPPORT	CND-7414962-0-0	10
4	SCR PNL FL HD 832x.62	9006040-2	9
1	PANEL, PROGRAMMER'S	D-4-7415047-0-0	8
1	KNOB, ROTARY	1212570	7
6	SCR PNL HD PAN 832x.38	9006022-1	6
1	CIRCUIT ETCH BD KY11-LB	D-C-7411800-0-1	5
7	SCR FILL HD PAN 832x.31	9006799-06	4
7	WASHER, SPRING LOCK	9006690	3
1	SUPPORT, PANEL	D-4-7415048-0-0	2
1	BEZEL 11/04	END-7415599-0-0	1

QUANTITY & VARIATION		DESCRIPTION		DWG. PART NO.		ITEM NO.	
UNLESS OTHERWISE SPECIFIED DIMENSIONS ARE IN INCHES		CLASS OF ACCURACY		TOLERANCE RANGE INCHES		TOLERANCE RANGE INCHES	
SURFACE QUALITY		CHECK ONE		OVER 0.015		OVER 0.015	
MICROMETERS		PREFERRED		0.001		0.001	
THIRD ANGLE PROJECTION		FIRST USED ON		11/34		11/34	
REMOVE BURR AND BREAK SHARP CORNERS		TITLE		CONSOLE ASSY		PROGRAMMER'S	
DO NOT SCALE DWG		NEXT HIGHER ASSY.		B-DD-KY11-LB		B	
MATERIAL		SCALE		1 OF 1		REV. B	
FINISH		SHEET		OF 1		REV. B	


REV.	DATE	BY	CHK	CHANGE NO.
1	11/34	B. COURTENANCE	P. PORRECA	1
2	11/34	B. COURTENANCE	P. PORRECA	2
3	11/34	B. COURTENANCE	P. PORRECA	3
4	11/34	B. COURTENANCE	P. PORRECA	4
5	11/34	B. COURTENANCE	P. PORRECA	5
6	11/34	B. COURTENANCE	P. PORRECA	6
7	11/34	B. COURTENANCE	P. PORRECA	7
8	11/34	B. COURTENANCE	P. PORRECA	8

DEC FORM NO. 100-0

1. ARROW ON BOARD IS TO LINE UP WITH  
ARROW ON CONNECTOR (J1 & J2).



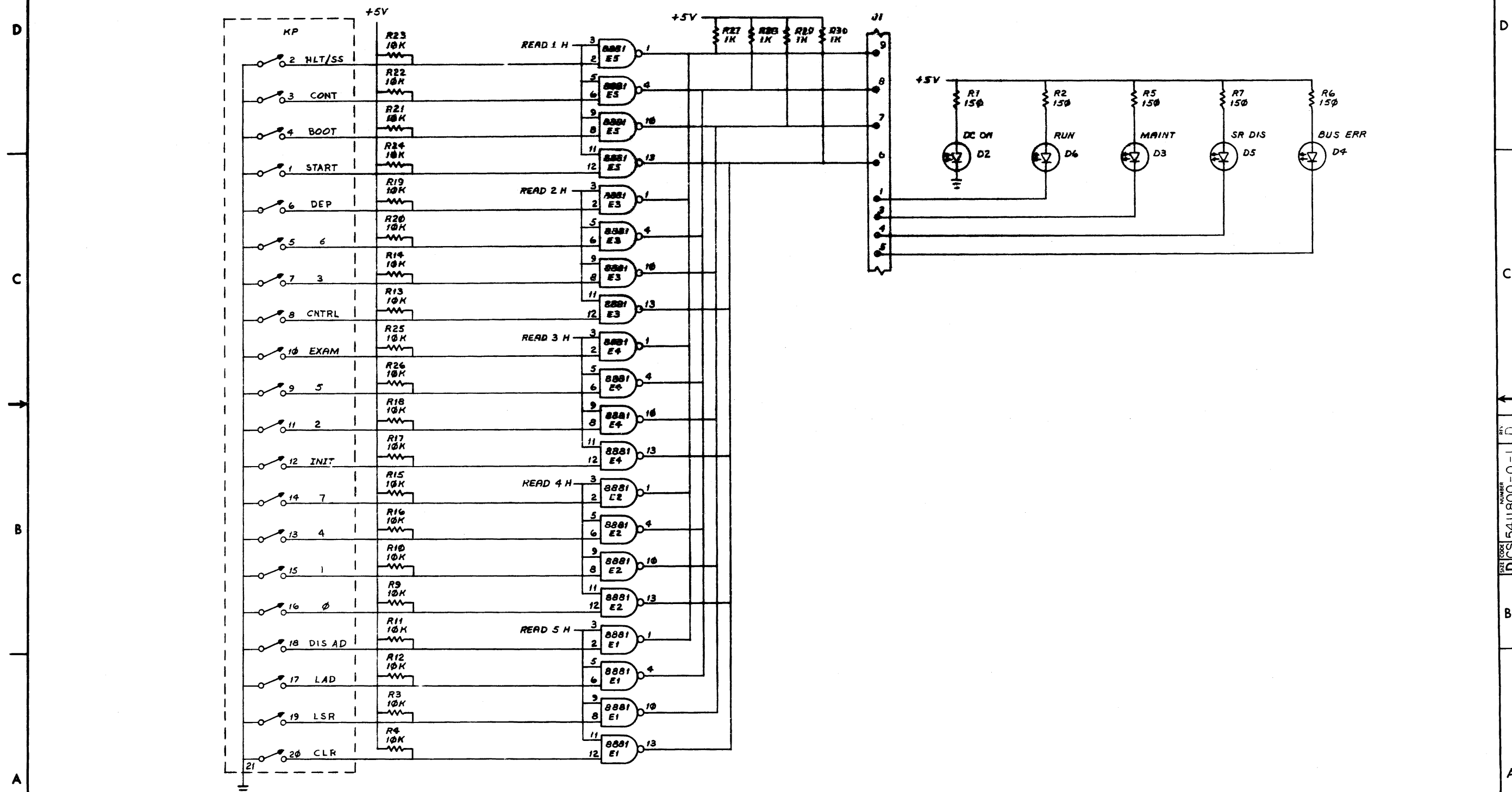
REF			
REF		X-Y COORDINATE HOLE LOCATION	K-CD-5411800-0-4
REF		ASSY/DRILLING HOLE LAYOUT	D-AN 5411800-0-5
REF		MODULE ECO HISTORY	B-WH-5411800-0-6
1		ETCHED CIRCUIT BOARD	5011799
0	C1 THRU C8	CAPACITOR, .01uf, 100V, 20%	1001610-01
2	C9, C10	CAPACITOR, 0.0uf, 35 VDC, 10%	1005308
0	D1 THRU D6	DIODE, LIGHT EMITTING	1110064
0	D7 THRU D12	7 SEGMENT, DISPLAY	1911297
1	J1	CONNECTOR, 20 PIN	1209941-06
1	J2	CONNECTOR, 10 PIN	1209941-05
1	S1	SWITCH, ROTARY, 3 POSITION	1212500-01
1	KP	KEYPAD	1211056
0	D7 THRU Q12	SOCKET, 14 PIN	1211013-01
12	R1, R2, R5, R6, R7, R47 THRU R59	RESISTOR, 150 OHM, 1/4W, 5%	1300250
10	R32, R34, R36, R38, R40, R42, R27 THRU R30	RESISTOR, 1K, 1/4W, 5%	1300305
0	R01, R33, R35, R37, R39, R41	RESISTOR, 620 OHM, 1/4W, 5%	1303178
30	R3, R4, R8 THRU R26, R43 THRU R46, R54 THRU R58	RESISTOR, 10K, 1/4W, 5%	1300479
0	Q1 THRU Q6	TRANSISTOR, MPSA55	1510706
1	E0	I.C. DEC 7404	1909006
1	E7	I.C. DEC 7417	1909920
1	E8	I.C. DEC 7447A	1911295
5	E1 THRU E5	I.C. DEC 8001	1900705
0		EYELET	9009000
0	T01 THRU T06	TERMINAL, QUICK DISCONNECT	9007112
6		WASHER, SHOULDER	9000310
4		SCREW, PHILLIPS #4/40 x 3/16 LG	9000033-01
4		NUT, KEP #4/40	9006057
2		WASHER, LOCK #4	9006688
1		BRACKET, SWITCH	7415272
2		SCREW, PHILLIPS #4/40 x 1/4 LG	9009100-03
2		SCREW PHILLIPS #2-56 x 1/4 LG	9006001-1
1		RETAIN, KEY BOARD ASSY	C-IA-70377-0-0
2		WASHER, LOCK #2	9006686
2		NUT, HEX	9006355
2		WASHER, FLAT #2	9008877
2		WASHER, FLAT #4	9006655
4		WASHER, NYLON	9006706

QTY	REF. DESIGNATION	DESCRIPTION	PART NO.	IT
PARTS LIST				
ETCH BOARD REV.	C			
		DRN. <i>J. Vincent</i>	DATE <i>9-19-75</i>	 TITLE KY11-LB (CONSOLE BOARD)
		CHG. <i>J. Vincent</i>	DATE <i>11-20-75</i>	
		DRN. <i>J. Vincent</i>	DATE <i>11-26-75</i>	
		PROJ. ENG. <i>J. Vincent</i>	DATE <i>11-26-75</i>	
		DRN. <i>J. Vincent</i>	DATE <i>11-26-75</i>	
		PROJ. ENG. <i>J. Vincent</i>	DATE <i>11-26-75</i>	
		NEXT HIGHER ASSY		
DEC NO.	EIA NO.	SIZE	CODE	NUMBER
		D	CS	5411800-0-1
CONVERSION CHART		SCALE	1 OF 3	

I.C. DEC 7447A	8	16
IC TYPE	GND	+5V

GND AND 5V ARE USUALLY PIN 7 AND 14  
RESPECTIVELY EXCEPTIONS ARE STATED ABOVE

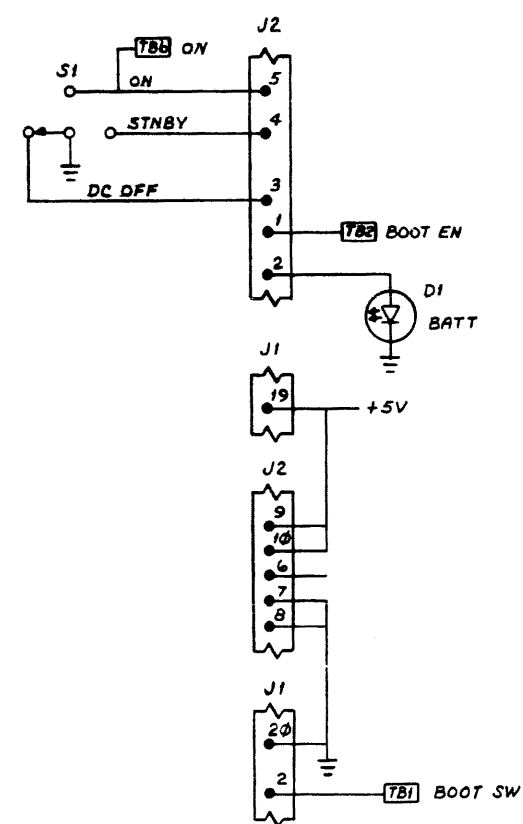
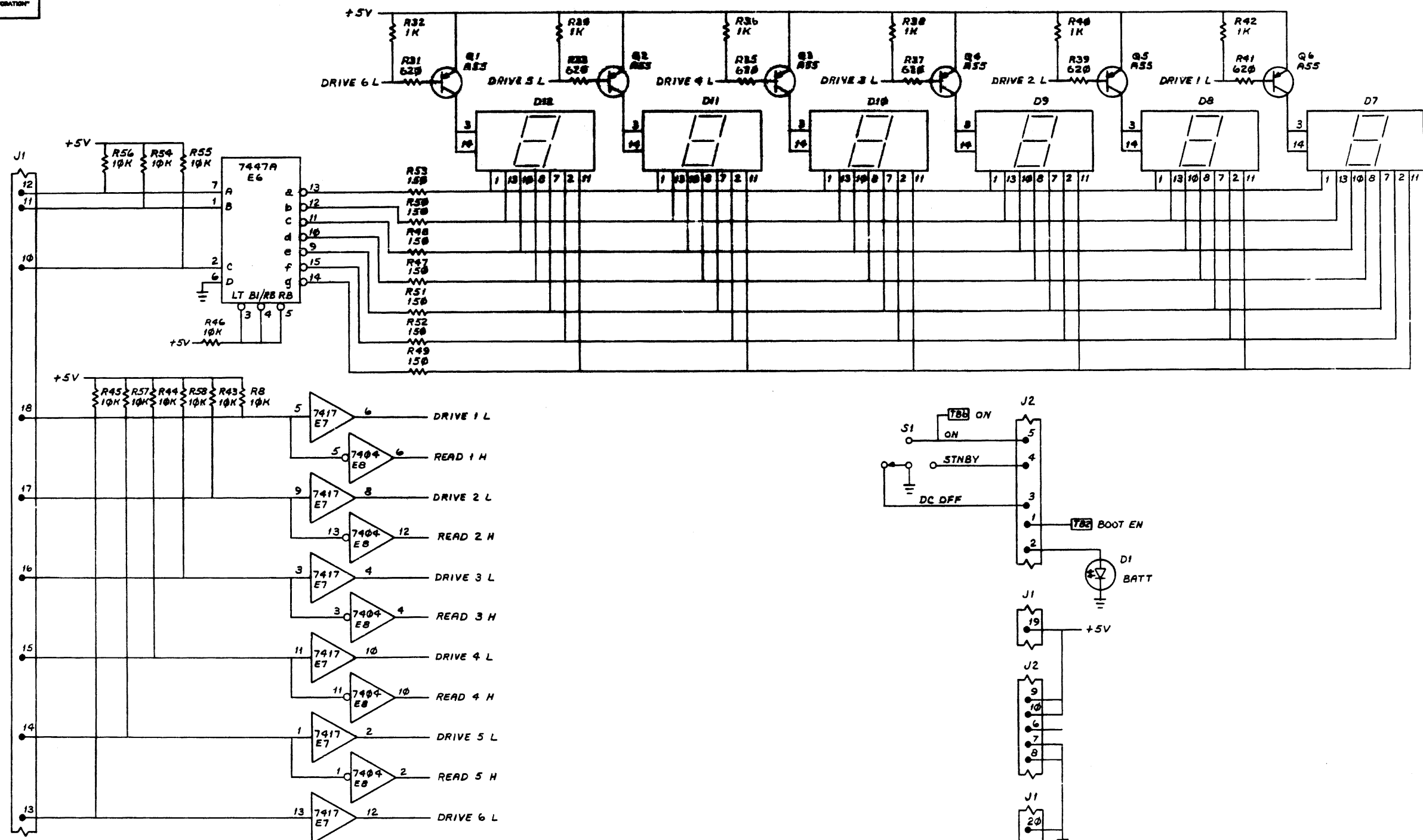
"THE DRAWINGS AND SPECIFICATIONS HEREIN ARE THE PROPERTY OF SERIAL EQUIPMENT CORPORATION AND SHALL NOT BE REPRODUCED OR COPIED OR USED IN WHOLE OR IN PART AS THE BASIS FOR THE MANUFACTURE OR SALE OF ITEMS WITHOUT WRITTEN PERMISSION.  
COPYRIGHT © 1975 SERIAL EQUIPMENT CORPORATION



REVISIONS		
CHK	CHANGE NO.	REV.

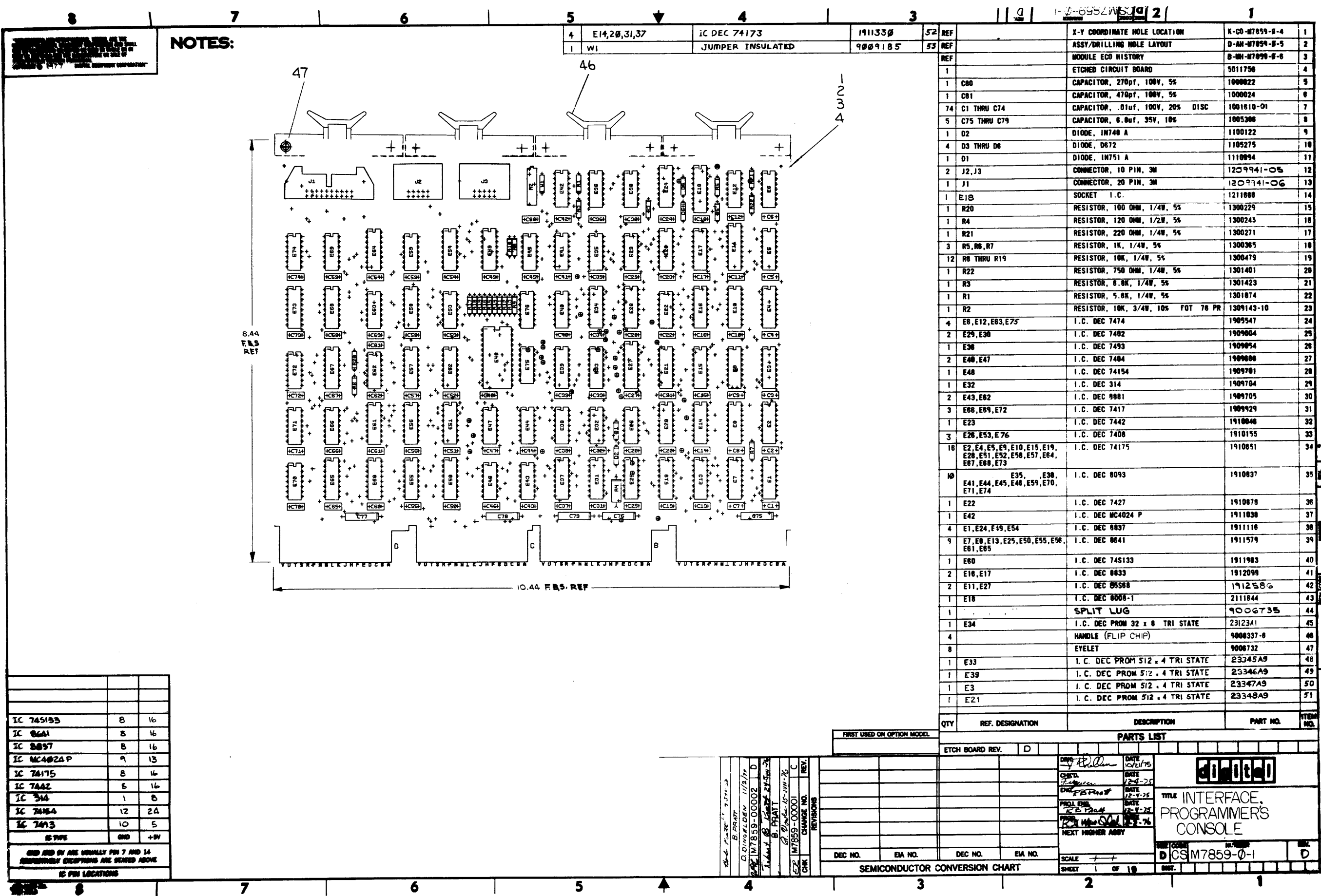
TITLE KYII-LB (CONSOLE BOARD)		SIZE CODE D CS	NUMBER 5411800-0-1		REV D
SCALE 1" = 1"	SHEET 2 OF 3	DIST.			

THIS DRAWING AND SPECIFICATIONS HEREIN ARE THE PROPERTY OF DIGITAL EQUIPMENT CORPORATION AND SHALL NOT BE REPRODUCED OR COPIED OR USED IN WHOLE OR IN PART AS THE BASIS FOR THE MANUFACTURE OR SALE OF ITEMS WITHOUT WRITTEN PERMISSION.  
COPYRIGHT © 1975 DIGITAL EQUIPMENT CORPORATION



REVISIONS		
CHK	CHANGE NO.	REV.

TITLE	KYII-LB (CONSOLE BOARD)	SIZE CODE	NUMBER	REV.
SCALE	1/1	SHEET	3 OF 3	D
DIST.				



IC 745133	8	16
IC 86A1	8	16
IC 8897	8	16
IC MC4024P	9	13
IC 74175	8	16
IC 7442	8	16
IC 314	1	8
IC 74154	12	24
IC 7413	10	5
IS TYPE	END	+5V
END AND BY ARE USUALLY PIN 7 AND 14 RESPECTIVE EXCEPTIONS ARE SHOWN ABOVE		
IC PIN LOCATIONS		

NOTES:

4	E14,20,31,37	IC DEC 74173	1911330	52	REF
1	W1	JUMPER INSULATED	9009185	53	REF

QTY	REF. DESIGNATION	DESCRIPTION	PART NO.	ITEM NO.
1	REF	X-Y COORDINATE HOLE LOCATION	K-CO-M7859-D-4	1
1	REF	ASSY/DRILLING HOLE LAYOUT	D-AH-M7859-D-5	2
1	REF	MODULE ECO HISTORY	B-MH-M7859-D-6	3
1	REF	ETCHED CIRCUIT BOARD	5011756	4
1	C80	CAPACITOR, 270pF, 100V, 5%	1000022	5
1	C81	CAPACITOR, 470pF, 100V, 5%	1000024	6
74	C1 THRU C74	CAPACITOR, .01uF, 100V, 20% DISC	1001610-01	7
5	C75 THRU C79	CAPACITOR, 6.8uF, 35V, 10%	1005306	8
1	D2	DIODE, 1N748 A	1100122	9
4	D3 THRU D6	DIODE, D672	1105275	10
1	D1	DIODE, 1N751 A	1110894	11
2	J2, J3	CONNECTOR, 10 PIN, 3M	1209941-05	12
1	J1	CONNECTOR, 20 PIN, 3M	1209941-06	13
1	E18	SOCKET I.C.	1211688	14
1	R20	RESISTOR, 100 OHM, 1/4W, 5%	1300229	15
1	R4	RESISTOR, 120 OHM, 1/2W, 5%	1300243	16
1	R21	RESISTOR, 220 OHM, 1/4W, 5%	1300271	17
3	R5, R6, R7	RESISTOR, 1K, 1/4W, 5%	1300305	18
12	R8 THRU R19	RESISTOR, 10K, 1/4W, 5%	1300479	19
1	R22	RESISTOR, 750 OHM, 1/4W, 5%	1301401	20
1	R3	RESISTOR, 8.8K, 1/4W, 5%	1301423	21
1	R1	RESISTOR, 5.8K, 1/4W, 5%	1301874	22
1	R2	RESISTOR, 10K, 3/4W, 10% FOT 78 PR	1309143-10	23
4	E6, E12, E63, E75	I.C. DEC 7474	1909547	24
2	E29, E30	I.C. DEC 7402	1909604	25
1	E36	I.C. DEC 7493	1909654	26
2	E40, E47	I.C. DEC 7404	1909686	27
1	E48	I.C. DEC 74154	1909781	28
1	E32	I.C. DEC 314	1909784	29
2	E43, E62	I.C. DEC 8881	1909705	30
3	E66, E69, E72	I.C. DEC 7417	1909929	31
1	E23	I.C. DEC 7442	1910046	32
3	E26, E53, E76	I.C. DEC 7408	1910155	33
16	E2, E4, E5, E9, E10, E15, E19, E28, E51, E52, E58, E57, E64, E67, E68, E73	I.C. DEC 74175	1910851	34
10	E41, E44, E45, E46, E59, E70, E71, E74	I.C. DEC 8093	1910837	35
1	E22	I.C. DEC 7427	1910878	36
1	E42	I.C. DEC MC4024 P	1911038	37
4	E1, E24, E49, E54	I.C. DEC 8837	1911116	38
9	E7, E8, E13, E25, E50, E55, E56, E61, E65	I.C. DEC 8641	1911579	39
1	E60	I.C. DEC 745133	1911983	40
2	E16, E17	I.C. DEC 8833	1912098	41
2	E11, E27	I.C. DEC 85588	1912586	42
1	E18	I.C. DEC 8008-1	2111844	43
1		SPLIT LUG	9006735	44
1	E34	I.C. DEC PROM 32 x 8 TRI STATE	2312341	45
4		HANDLE (FLIP CHIP)	9006337-8	46
8		EYELET	9006732	47
1	E33	I.C. DEC PROM 512 x 4 TRI STATE	23345A9	48
1	E39	I.C. DEC PROM 512 x 4 TRI STATE	23346A9	49
1	E3	I.C. DEC PROM 512 x 4 TRI STATE	23347A9	50
1	E21	I.C. DEC PROM 512 x 4 TRI STATE	23348A9	51

DATE 10/21/75  
CHKD. [Signature]  
ENG. [Signature]  
PROL. ENG. [Signature]  
NEXT HIGHER ASSY

DATE 10/21/75  
DATE 10/21/75  
DATE 10/21/75  
DATE 10/21/75

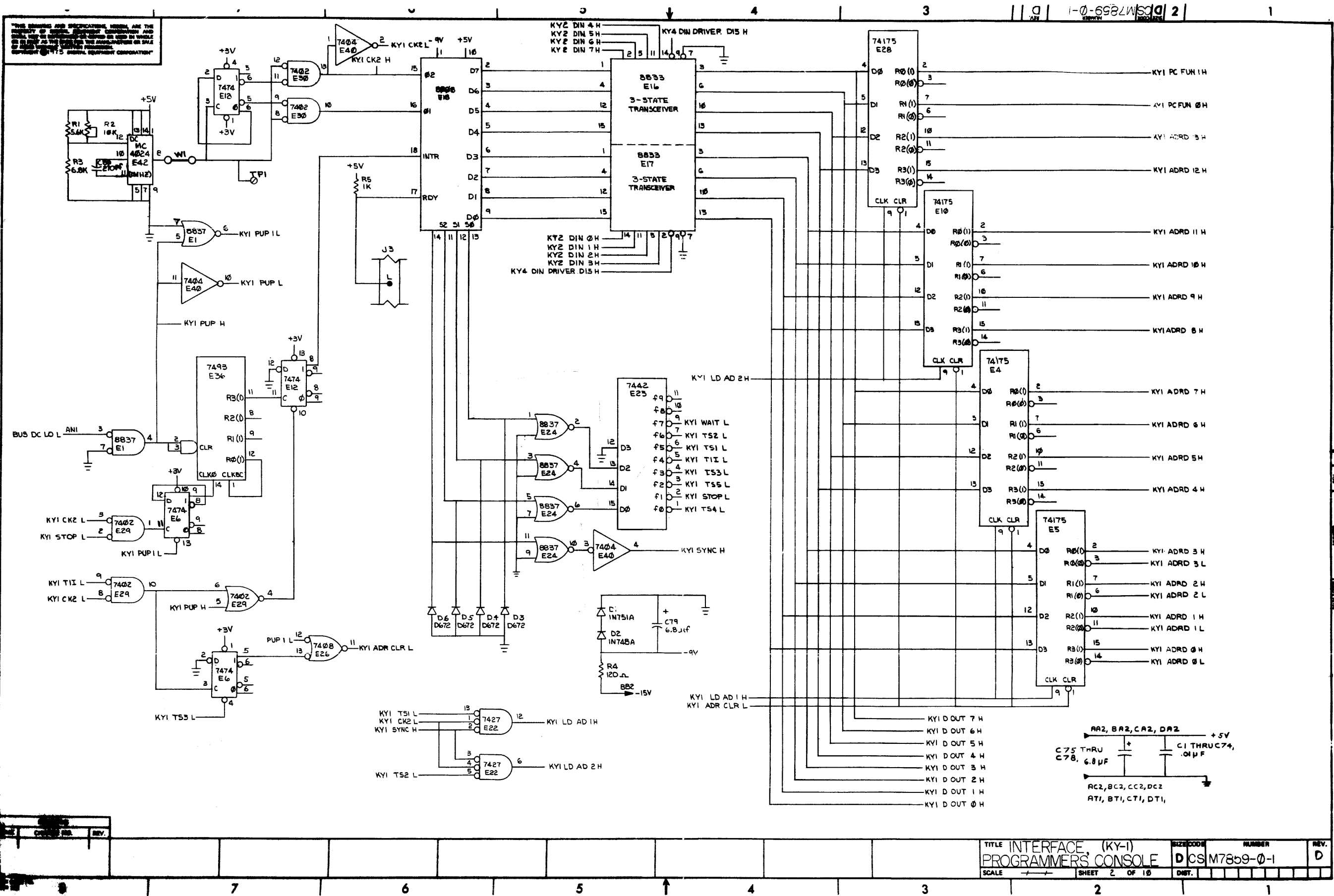
TITLE  
INTERFACE,  
PROGRAMMER'S  
CONSOLE  
D/C M7859-D-1

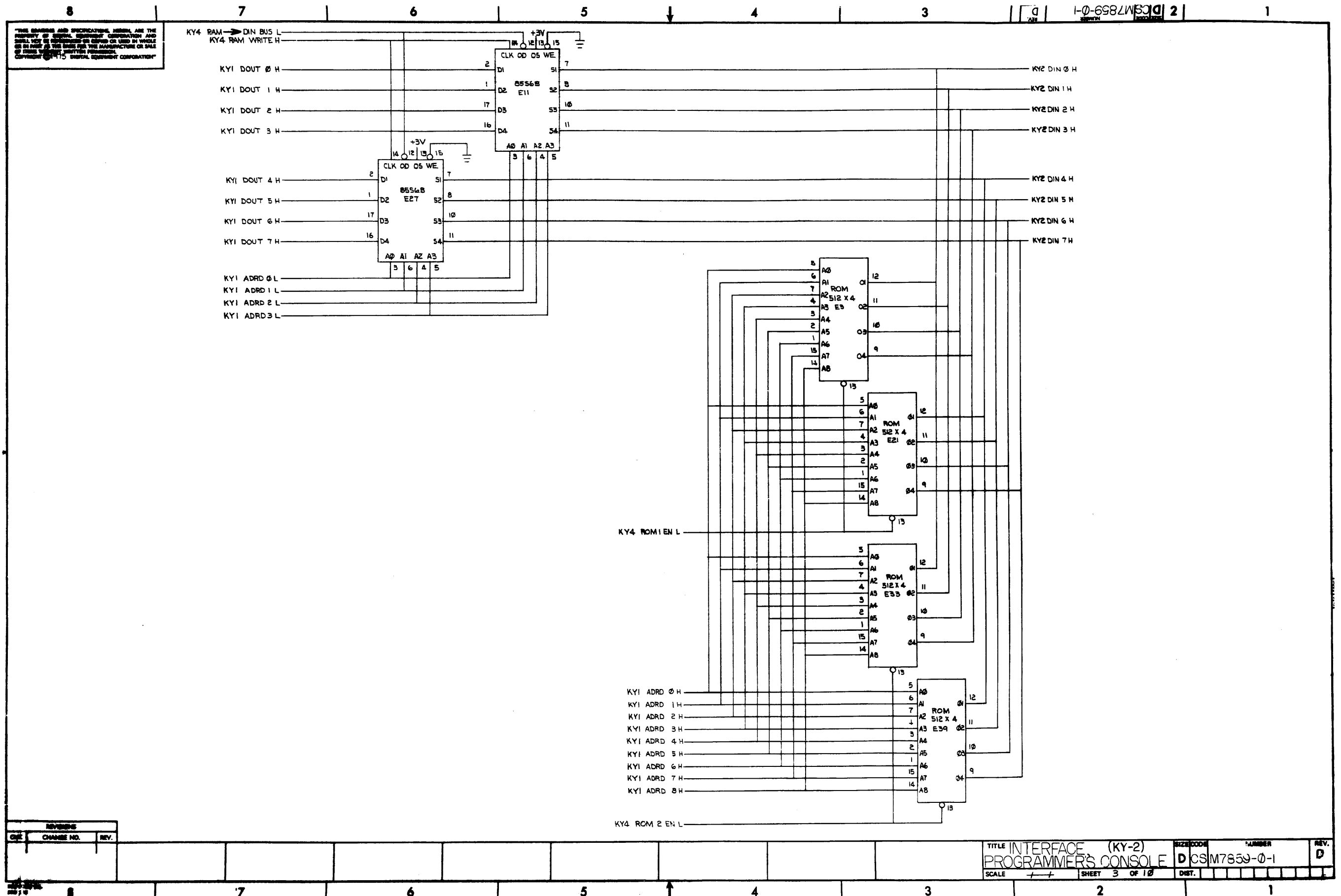
SCALE  
SHEET 1 OF 10

DEC NO. EIA NO. DEC NO. EIA NO.

SEMICONDUCTOR CONVERSION CHART

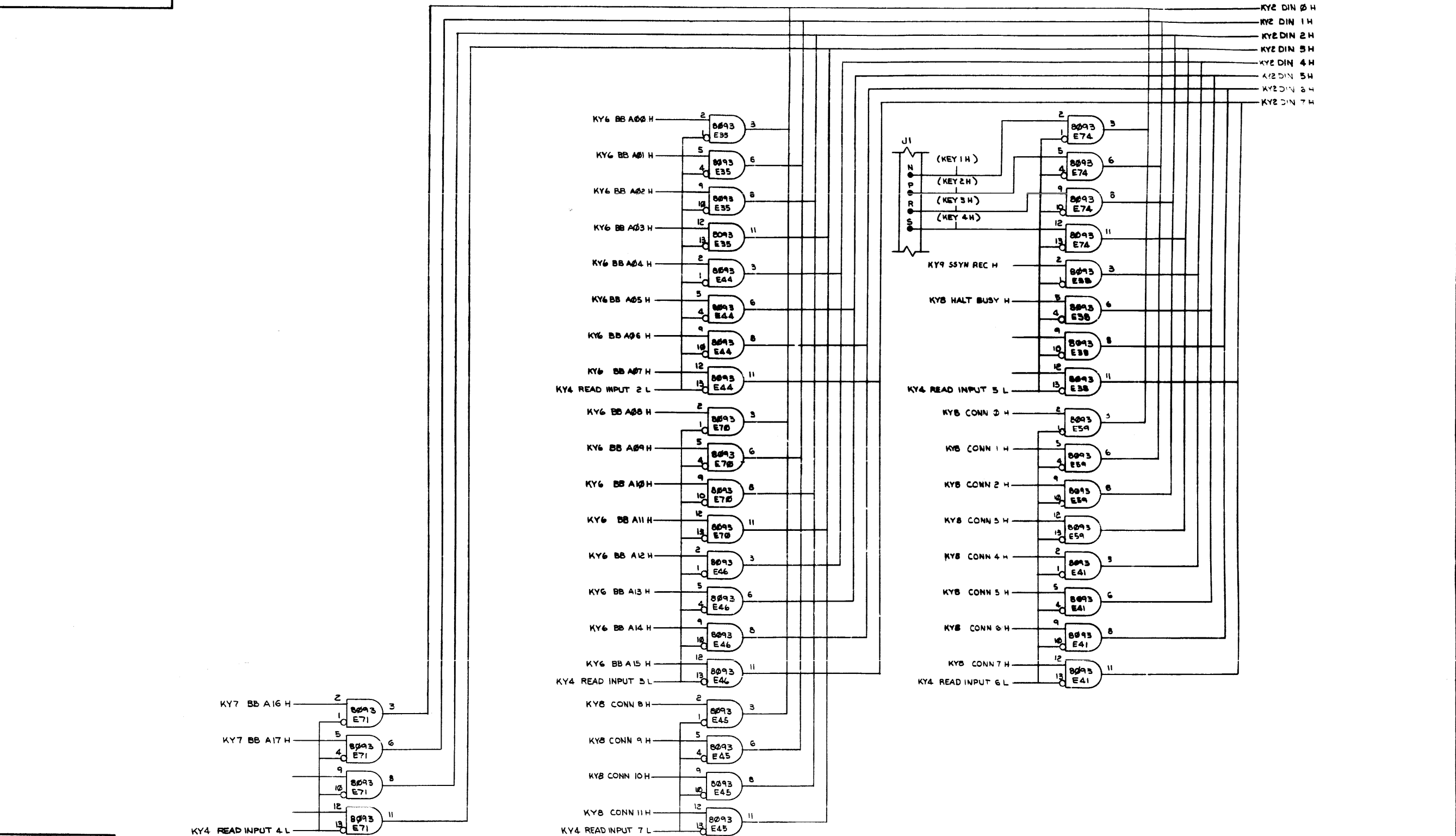
THIS DRAWING AND SPECIFICATION, HEREIN ARE THE PROPERTY OF DIGITAL EQUIPMENT CORPORATION AND SHALL REMAIN SO UNLESS RETURNED BY THE USER OR BY THE COMPANY. NO PART OF THIS DRAWING OR SPECIFICATION OR ANY INFORMATION CONTAINED HEREIN IS TO BE REPRODUCED OR TRANSMITTED IN ANY FORM OR BY ANY MEANS, ELECTRONIC OR MECHANICAL, INCLUDING PHOTOCOPYING, RECORDING, OR BY ANY INFORMATION STORAGE AND RETRIEVAL SYSTEM, WITHOUT PERMISSION IN WRITING FROM DIGITAL EQUIPMENT CORPORATION.







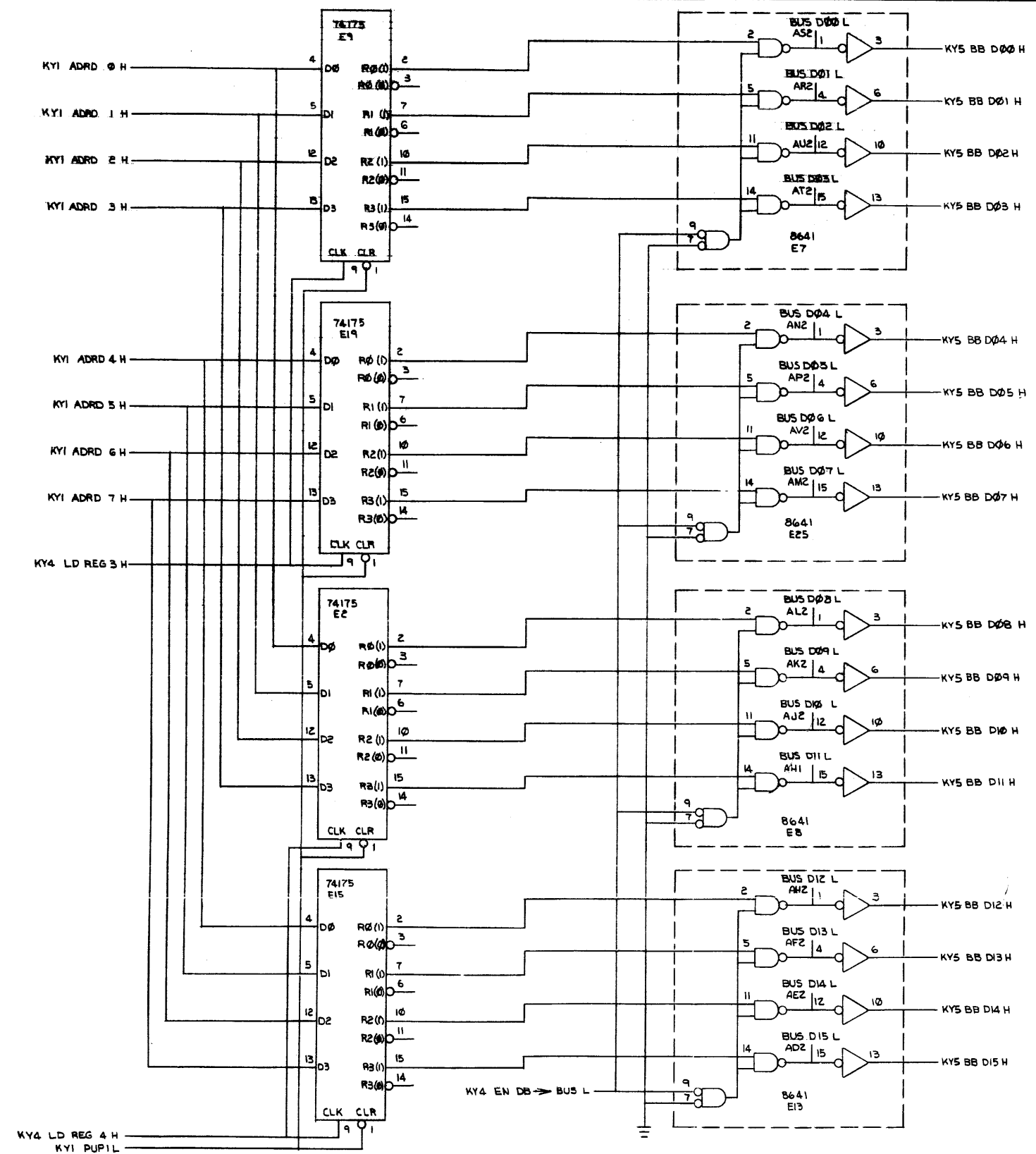
THIS DRAWING AND SPECIFICATIONS HEREIN ARE THE PROPERTY OF DIGITAL EQUIPMENT CORPORATION AND SHALL NOT BE REPRODUCED OR COPIED OR USED IN WHOLE OR IN PART AS THE BASIS FOR THE MANUFACTURE OR SALE OF ITEMS WITHOUT WRITTEN PERMISSION.  
COPYRIGHT © 1977 DIGITAL EQUIPMENT CORPORATION



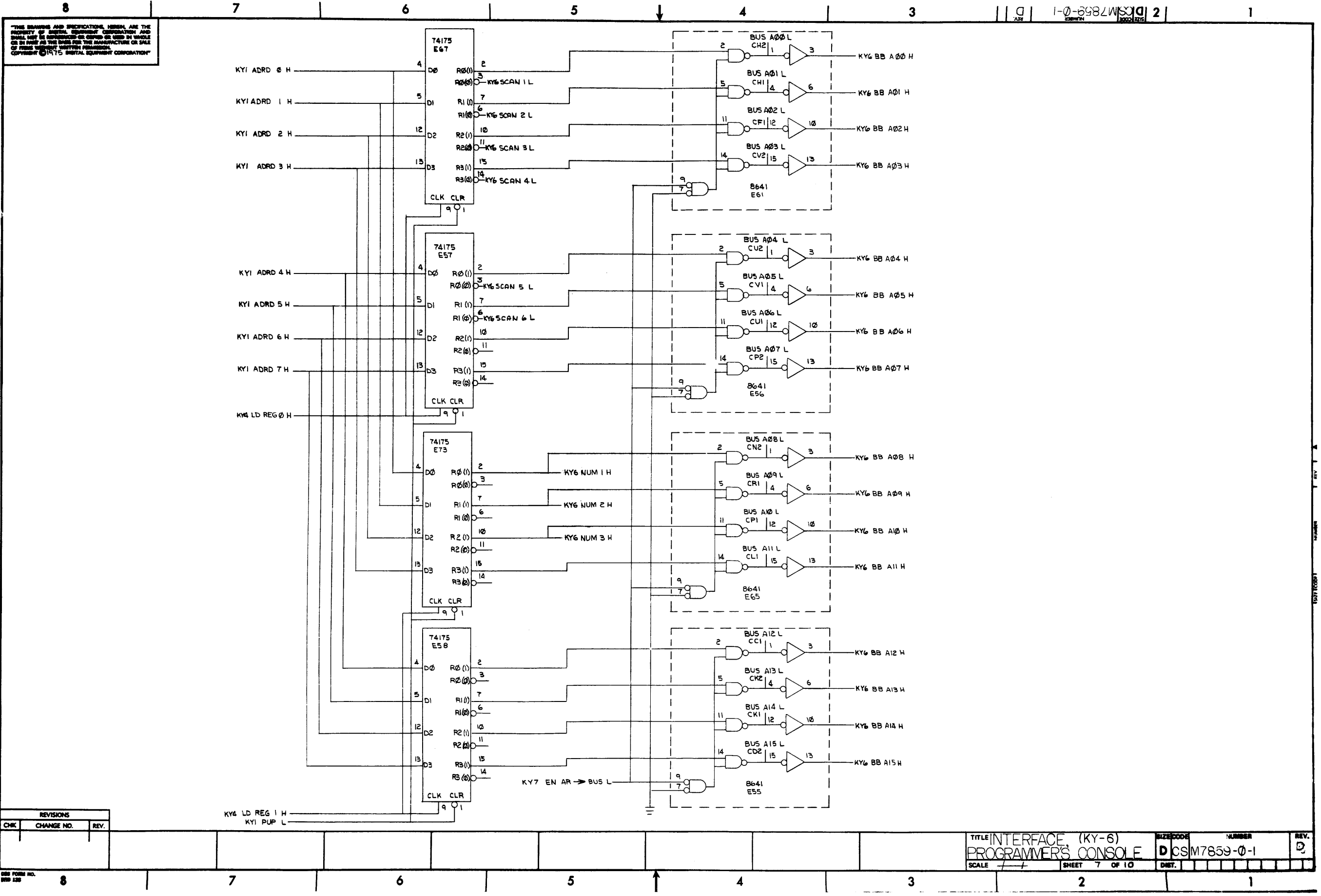
REVISIONS		
CHE	CHANGE NO.	REV.



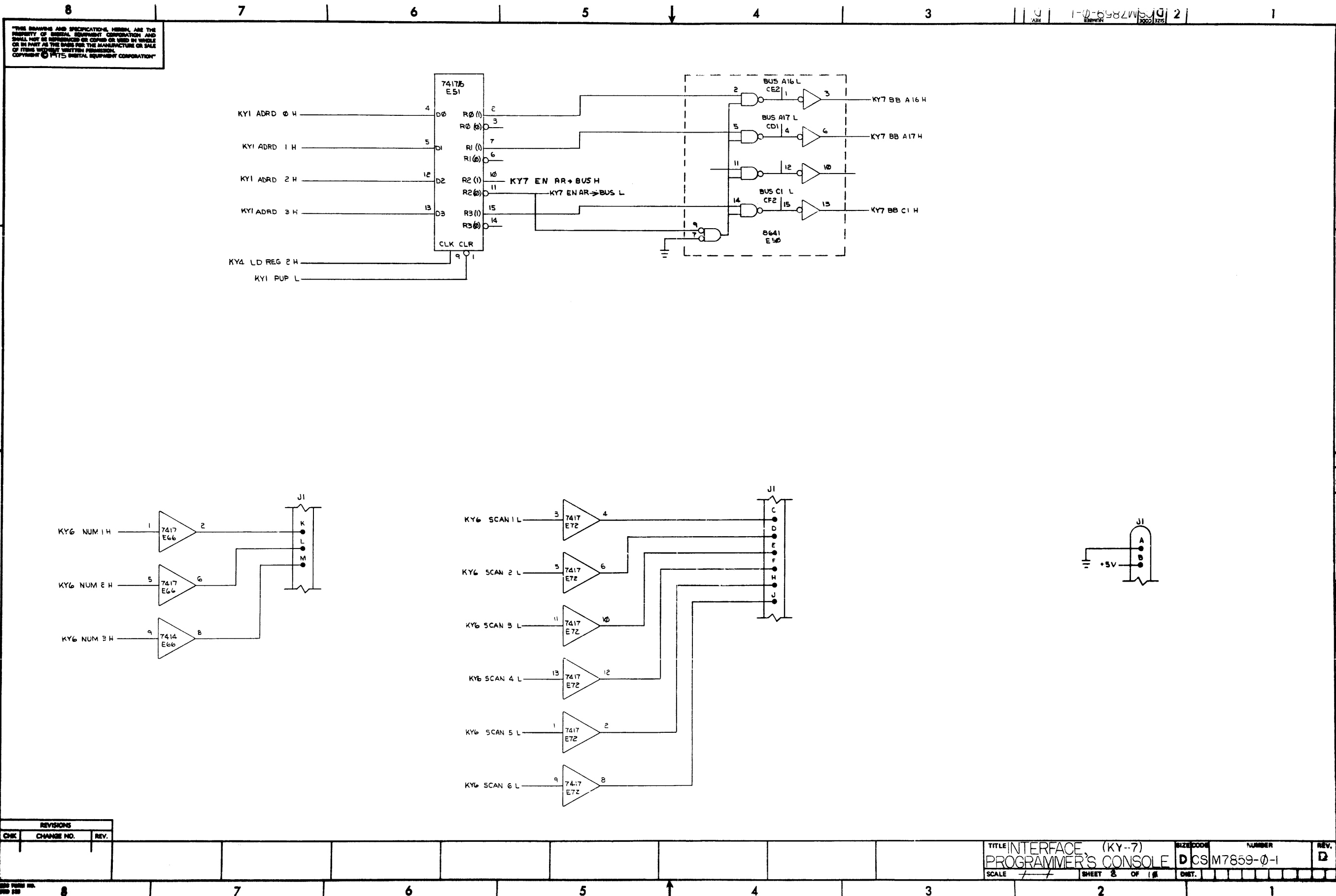
THE INFORMATION CONTAINED HEREIN IS THE PROPERTY OF THE UNITED STATES GOVERNMENT AND IS LOANED TO YOUR AGENCY. IT AND ITS CONTENTS ARE NOT TO BE DISTRIBUTED OUTSIDE YOUR AGENCY.



REVISIONS		
CHK	CHANGE NO.	REV.

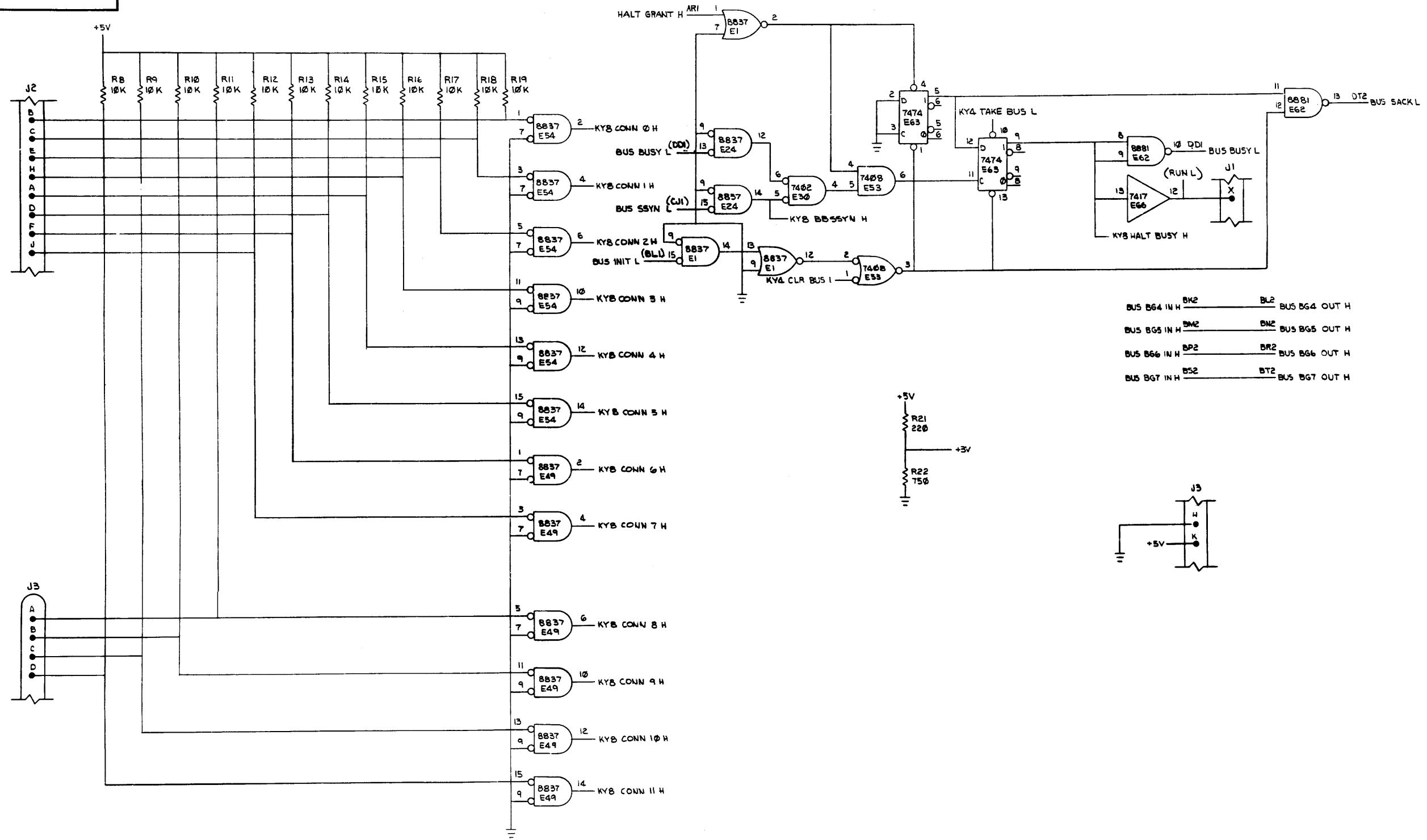


REVISIONS		
CHK	CHANGE NO.	REV.



"THIS DRAWING AND SPECIFICATIONS HEREIN ARE THE PROPERTY OF RENTAL EQUIPMENT CORPORATION AND SHALL NOT BE REPRODUCED OR COPIED OR USED IN WHOLE OR IN PART AS THE BASIS FOR THE MANUFACTURE OR SALE OF ITEMS WITHOUT WRITTEN PERMISSION. COPYRIGHT © RENTAL EQUIPMENT CORPORATION"

THIS DRAWING AND SPECIFICATIONS HEREIN ARE THE PROPERTY OF DIGITAL EQUIPMENT CORPORATION AND SHALL NOT BE REPRODUCED OR USED IN WHOLE OR IN PART AS THE BASIS FOR THE MANUFACTURE OR SALE OF ITEMS WITHOUT WRITTEN PERMISSION. COPYRIGHT © 1975 DIGITAL EQUIPMENT CORPORATION

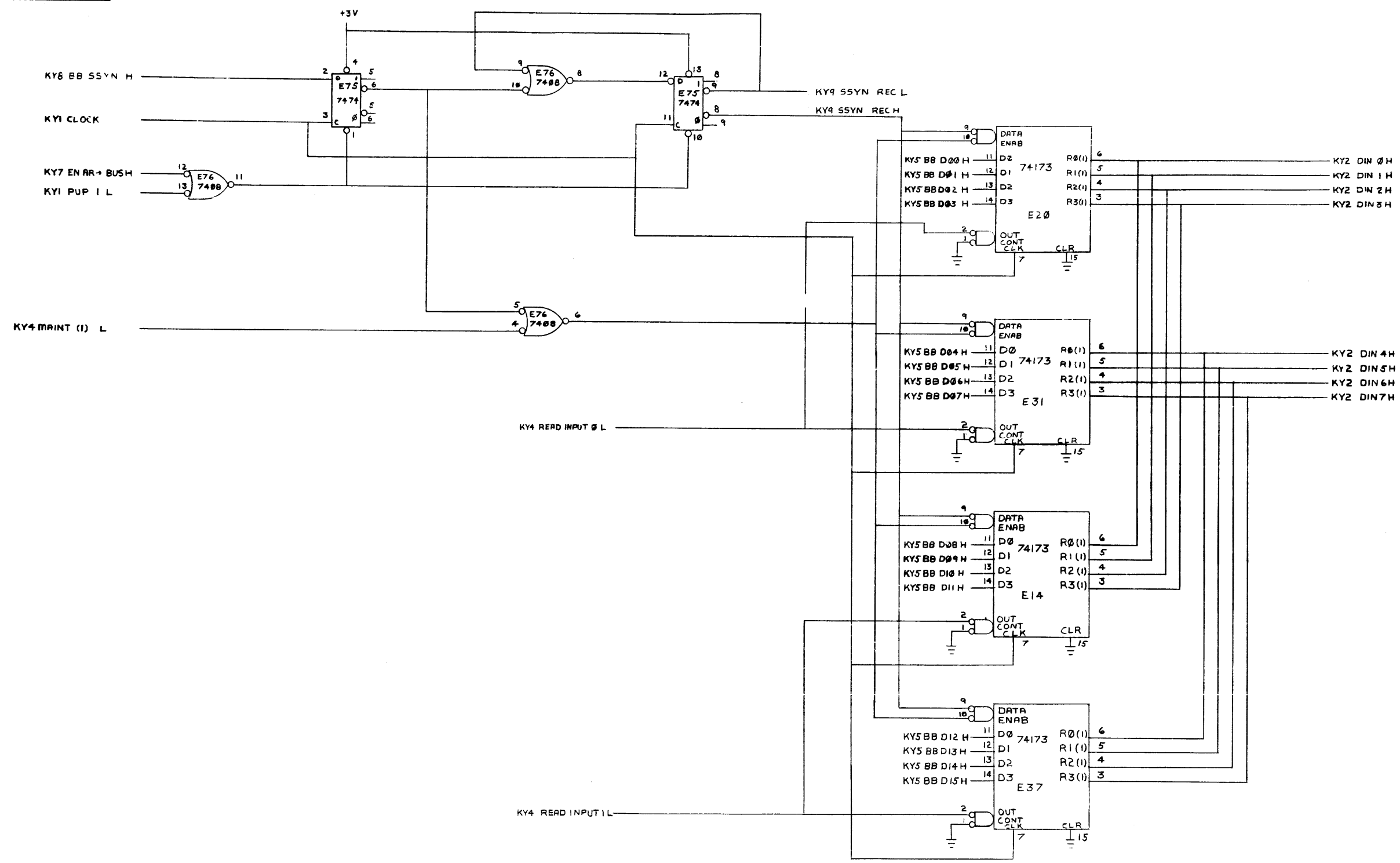


BUS B64 IN H BK2 BL2 BUS B64 OUT H  
BUS B65 IN H BK2 BL2 BUS B65 OUT H  
BUS B66 IN H BK2 BL2 BUS B66 OUT H  
BUS B67 IN H BK2 BL2 BUS B67 OUT H

REVISIONS		
CHK	CHANGE NO.	REV.

THIS DRAWING AND SPECIFICATION HEREIN ARE THE PROPERTY OF DIGITAL EQUIPMENT CORPORATION AND SHALL NOT BE REPRODUCED OR COPIED OR USED IN WHOLE OR IN PART AS THE BASIS FOR THE MANUFACTURE OR SALE OF ANY EQUIPMENT WITHOUT PERMISSION OF DIGITAL EQUIPMENT CORPORATION.

1-0-6982W



REV.	CHANGE NO.	REV.