

DRAWING NO.	NO. OF SHTS.	PART NO.	DESCRIPTION	REVISIONS															
				A	B	C	D												
D-UA-5413384-0-0	3		VT100 EXPANSION BACKPLANE	A	B	C	D												
K-PL-5413384-0-DBP	-		DATA BASE PARTS LIST	A	A	B	C												
D-CS-5413384-0-1	1		VT100 EXPANSION BACKPLANE	A	A	B	C												
D-MD-5013383-0-0	4		DRILL & ETCH DRAWING	A	A	A	A												
		5013383	ETCHED CIRCUIT BOARD	B	B	B	B												
K-PC-5413384-0-DBC			P.C. DESIGN DATA BASE	B	B	B	B												

NOTES:

REVISIONS		DATE	CHG NO.	REV.
		11-79	ML001	B
		12-81	ML002	C
		6-82	ML003	D

THIS DRAWING AND SPECIFICATIONS, HEREIN, ARE THE PROPERTY OF DIGITAL EQUIPMENT CORPORATION AND SHALL NOT BE REPRODUCED OR COPIED OR USED IN WHOLE OR IN PART AS THE BASIS FOR THE MANUFACTURE OR SALE OF ITEMS WITHOUT WRITTEN PERMISSION.

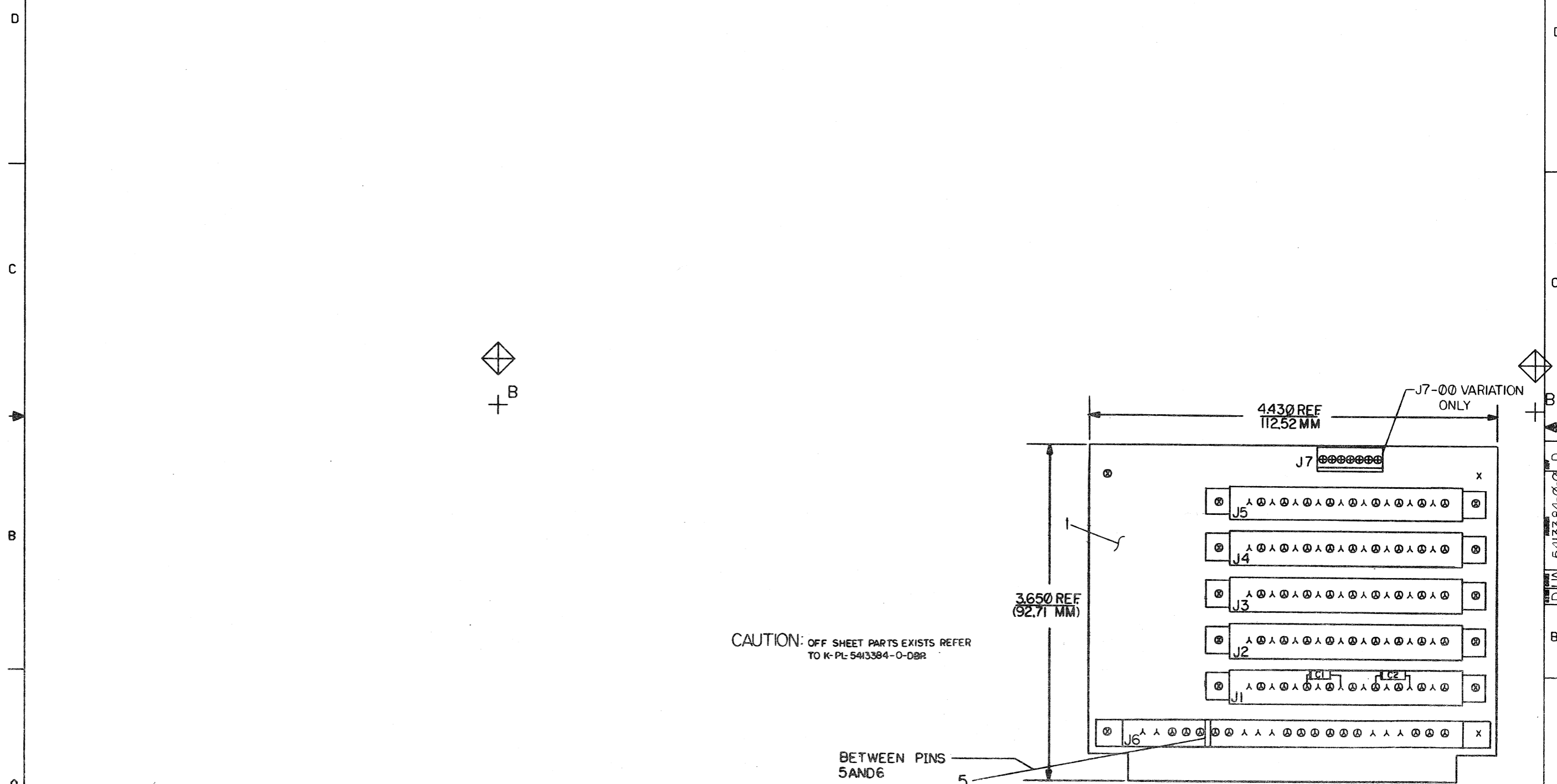
COPYRIGHT © 1979 DIGITAL EQUIPMENT CORPORATION



USED ON OPTION/MODEL	DRN. RITA Z. BUREAU	TITLE	VT100 EXPANSION BACKPLANE
VT100	CHK'D	SIZE	B DD
	ENG.	NUMBER	5413384-0
	PROD.	REV.	D
		SHEET 1 OF 1	

THIS DRAWING AND SPECIFICATIONS, HEREIN, AND THE PROPERTY OF ANALOG, MICROFILM CORPORATION AND SHALL NOT BE REPRODUCED OR COPIED IN WHOLE OR IN PART FOR THE PURPOSES OF THE CONSTRUCTION OR SALE OF ITEMS WITHOUT EXPRESS PERMISSION. COPYRIGHT © 1978 ANALOG MICROFILM CORPORATION

COMPONENT SIDE VIEW



NOTES: 1 THIS DRAWING REPRESENTS THE MAXIMUM CONFIGURATION. CONSULT PARTS LIST FOR SPECIFIC VARIATION.

CHANGE NO	REV	BY	DATE	DESCRIPTION
5413384	B	C. JAMES		

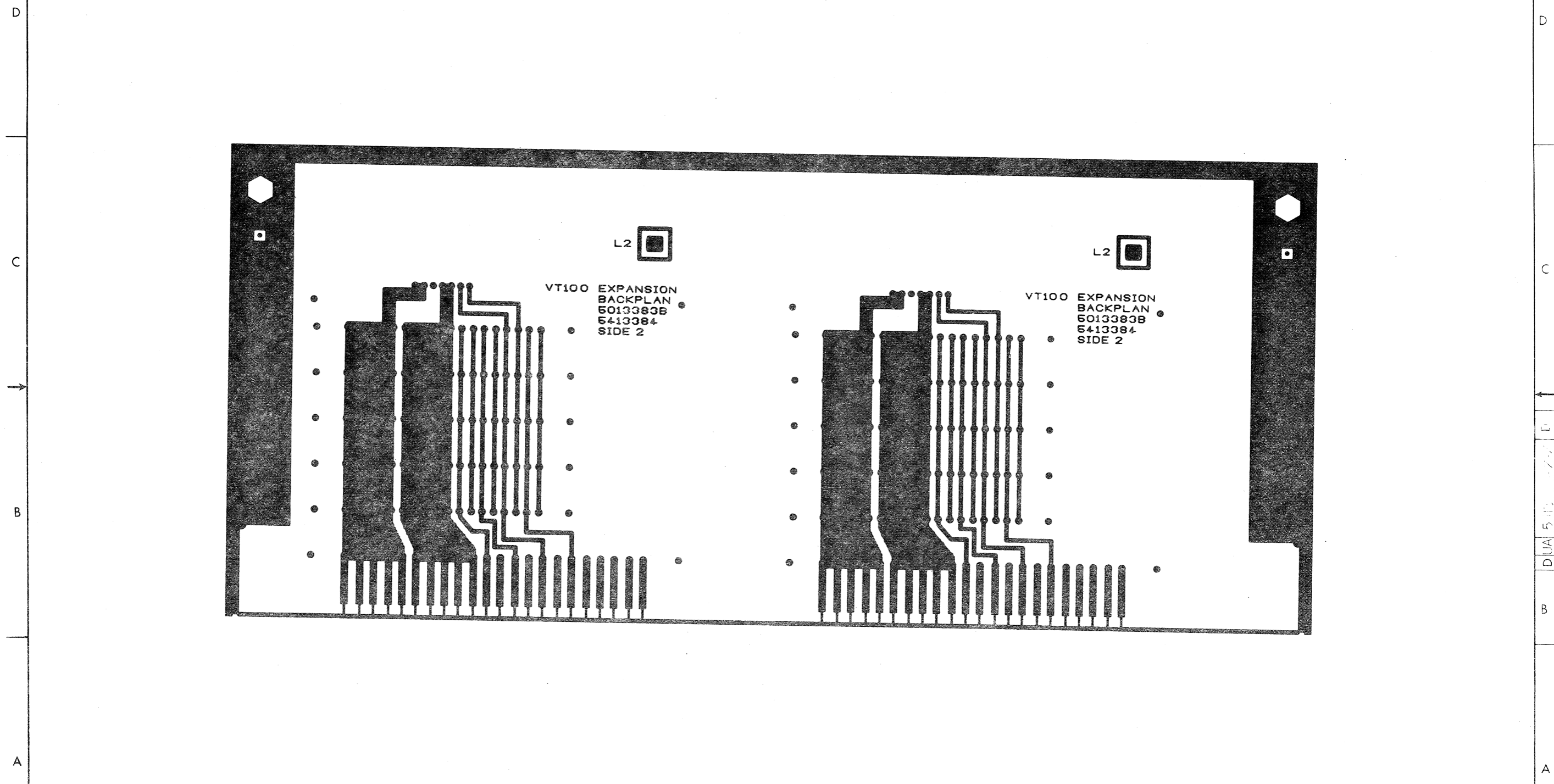
ETCH REV.	
P.C. DESIGN DATA BRSE REV.	

SIGNATURES		DATE	digital
DRN. <i>Michael A. Caruso</i>		11/26/78	
CHK'D. <i>R. [Signature]</i>		12/1/78	
ENG. <i>R. [Signature]</i>		12/2/78	
PROJ. ENG. <i>R. [Signature]</i>		12/2/78	
PROD. <i>Jack Kaplan</i>		1-22-79	
SCALE 2/1			
SHT. 1 OF 5			
NEXT NUMBER P.C. 8-DD-5413384-0-0			

TITLE VT100
EXPANSION BACKPLANE
SIZE CODE NUMBER REV
d UA 5413384-0-0

8 7 6 5 4 3 2 1

TO CHANGE THIS DRAWING TO REFLECT THE REVISIONS LISTED IN THE REVISIONS TABLE, THE DRAWING MUST BE REPRODUCED AS SHOWN ON THIS PAGE. THE ORIGINAL DRAWING IS NOT TO BE USED.



VT100 EXPANSION
BACKPLAN
6013383B
5413384
SIDE 2

VT100 EXPANSION
BACKPLAN
6013383B
5413384
SIDE 2

REVISIONS		
CHK	CHANGE NO.	REV.

8 7 6 5 4 3 2 1

TITLE	VT100 EXPANSION BACKPLANE	DESIGN CODE	DUA 5413384-00	NUMBER	00	BY	D
SCALE	2/1	SHEET	3	OF	3	DATE	

D
C
B
A
DUA 5413384-00
D

AUTOMATED BY PRLST,2D(11)

P A R T S L I S T

SHEET A1 OF A1

LINE ITEM DOCUMENT NUMBER PART NUMBER DESCRIPTION QTY PER VARIATION REFERENCE DESIGNATOR

1	1	D-MD-5013383-0-0	5013383-00	EXPANSION BACKPLANE	1	1	1
2	2	SEE NOTE	1215030-00	CARD EDGE 18PIN(1X18),125CC STR	1	1	J2
3	3	CONT	1215029-00	CARD EDGE 22PIN(2X11),156CC STR	1	1	J4
4	4		1215015-00	PCB,HEADER 07POS(1X07),100CC STR	1	1	J6
5	5		1213909-00	CONN,PTS KEYING PLUG USE W MOD	1	1	J7
6	6		1000019-00	150.0 MHF 100V 5X200PFH MICA	2	2	C1,C2

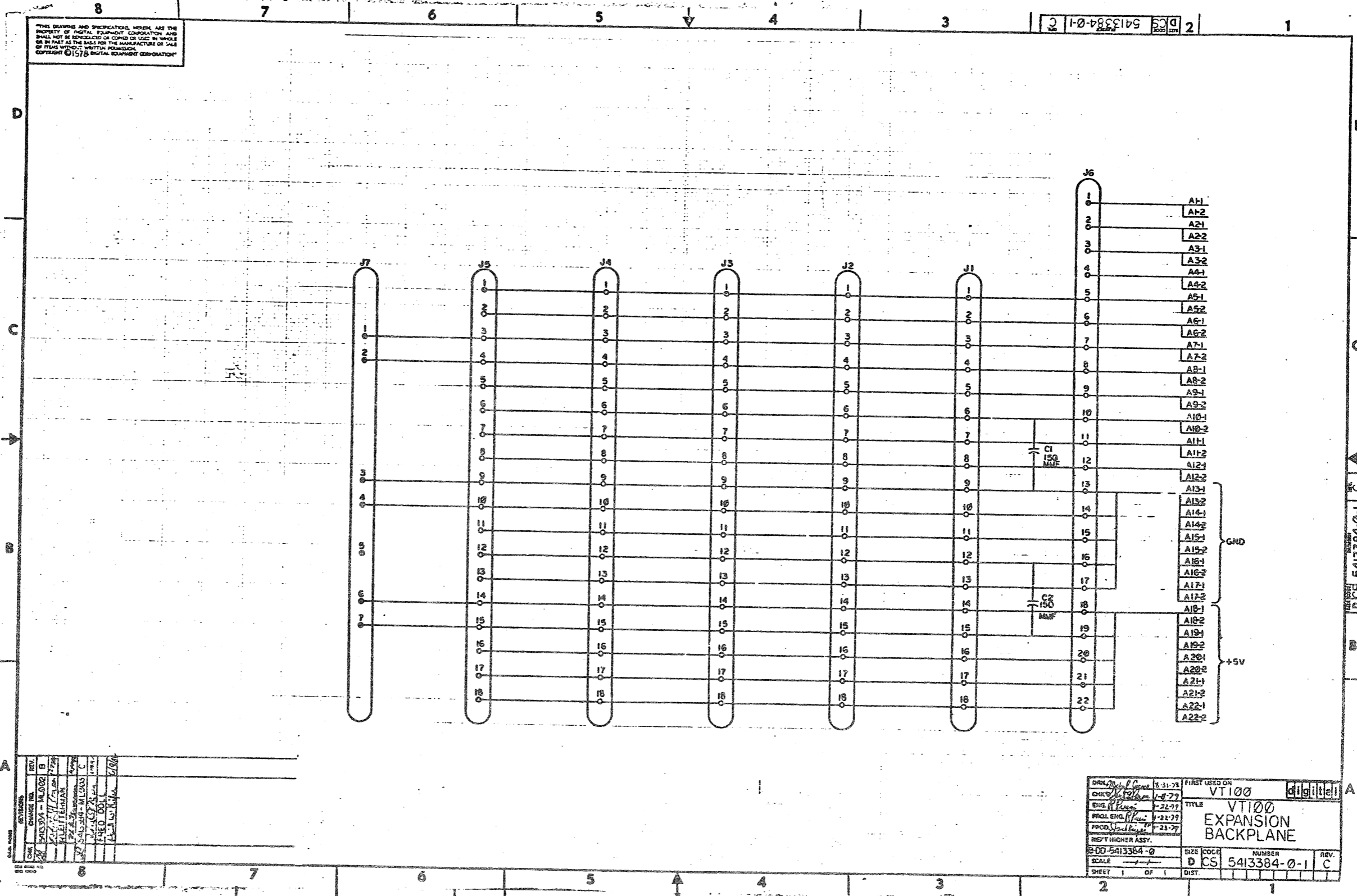
7 NOTE: ITEM 2, -00 AND -01 VAR. REF. DES. IS J2
 8 NOTE: ITEM 2, -02 VAR REF. DES. IS J4

REVISION HISTORY		BASIC PART NO: 5413384	
ENGR	ECD NUMBER	REV	SECTION A OF A
INIT	IA	SECTION, VARIATION INDEX	CHK'D: I SNETRASKI
IRL 15413384-ML002	IB	[A] 00,01,02	DATE: 29-JAN-79
IFD 15413384-ML003	IC	[B]	TITLE
			V1100 EXPANSION BACKPLANE
			DATE: 29-JAN-79
			DES. ENG: R PUCCI
			DATE: 29-JAN-79
			RESP. ENG: R PUCCI
			DATE: 29-JAN-79
			MFG. ENG: J KEIPER
			DATE: 29-JAN-79
			INFO. ENG: J KEIPER
			DATE: 29-JAN-79
			ASSEMBLY NUMBER:
			ID-UA-5413384-0-0
			TOP DOCUMENT NUMBER:
			FILE NAME:
			Z0292C.PLS
			EDIT #
			5

THIS DRAWING AND SPECIFICATIONS HEREIN, ARE THE PROPERTY OF DIGITAL EQUIPMENT CORPORATION AND SHALL NOT BE REPRODUCED OR COPIED OR USED IN WHOLE OR IN PART AS THE BASIS FOR THE MANUFACTURE OR SALE OF ITEMS WITHOUT WRITTEN PERMISSION. COPYRIGHT (C) 1982, DIGITAL EQUIPMENT CORPORATION.

THIS DRAWING AND SPECIFICATIONS HEREIN ARE THE PROPERTY OF DIGITAL EQUIPMENT CORPORATION AND SHALL NOT BE REPRODUCED OR COPIED OR USED IN WHOLE OR IN PART AS THE BASIS FOR THE MANUFACTURE OR SALE OF ITEMS WITHOUT WRITTEN PERMISSION OF DIGITAL EQUIPMENT CORPORATION. COPYRIGHT © 1978 DIGITAL EQUIPMENT CORPORATION

DCS 5413384-0-1 C 2

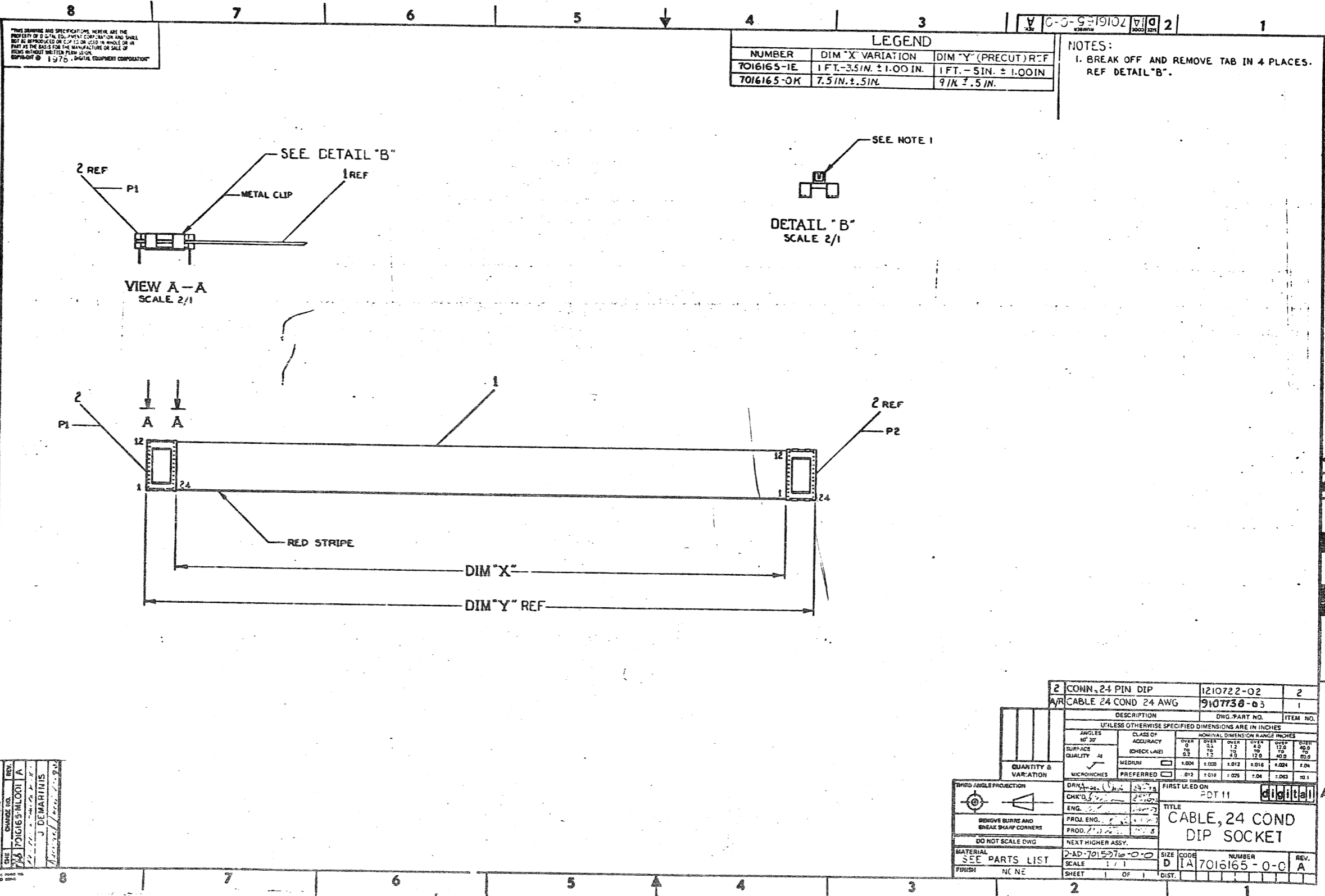


- A1-1
- A1-2
- A2-1
- A2-2
- A3-1
- A3-2
- A4-1
- A4-2
- A5-1
- A5-2
- A6-1
- A6-2
- A7-1
- A7-2
- A8-1
- A8-2
- A9-1
- A9-2
- A10-1
- A10-2
- A11-1
- A11-2
- A12-1
- A12-2
- A13-1
- A13-2
- A14-1
- A14-2
- A15-1
- A15-2
- A16-1
- A16-2
- A17-1
- A17-2
- A18-1
- A18-2
- A19-1
- A19-2
- A20-1
- A20-2
- A21-1
- A21-2
- A22-1
- A22-2

REV.	DATE	BY	CHKD.
B	10/02/78	W. J.
A

DESIGNED BY	DATE	FIRST USED ON	DIGITAL
CHKD. BY	...	VT100	
ENGR. BY	...	TITLE	VT100
PROJ. ENGR. BY	...	EXPANSION	
PROD. BY	...	BACKPLANE	
REV. HIGHER ASSY.			
DCS 5413384-0	SIZE CODE	NUMBER	REV.
SCALE	D	CS	5413384-0-1
SHEET 1	OF 1	DIST.	C

DCS 5413384-0-1 C



THIS DRAWING AND SPECIFICATIONS HEREIN ARE THE PROPERTY OF DIGITAL EQUIPMENT CORPORATION AND SHALL NOT BE REPRODUCED OR TRANSMITTED IN ANY FORM OR BY ANY MEANS, ELECTRONIC OR MECHANICAL, INCLUDING PHOTOCOPYING, RECORDING, OR BY ANY INFORMATION STORAGE AND RETRIEVAL SYSTEM, WITHOUT WRITTEN PERMISSION FROM DIGITAL EQUIPMENT CORPORATION. © 1976, DIGITAL EQUIPMENT CORPORATION

LEGEND		
NUMBER	DIM "X" VARIATION	DIM "Y" (PRECUT) REF
7016165-1E	1 FT. - 3.5 IN. ± 1.00 IN.	1 FT. - 5 IN. ± 1.00 IN.
7016165-0K	7.5 IN. ± .5 IN.	9 IN. ± .5 IN.

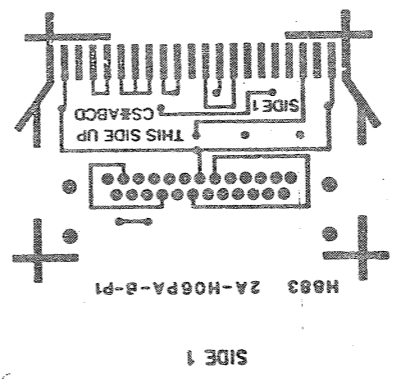
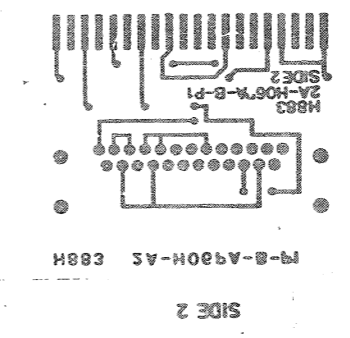
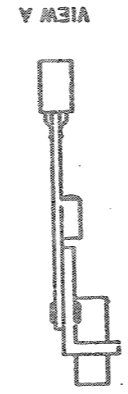
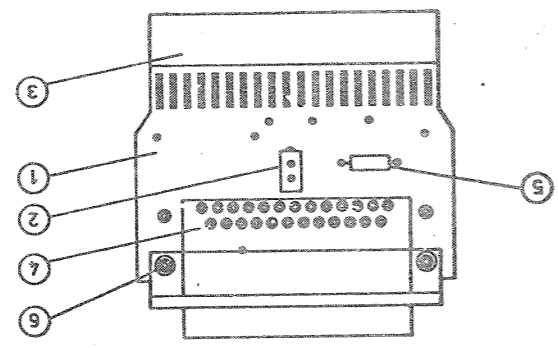
NOTES:
1. BREAK OFF AND REMOVE TAB IN 4 PLACES. REF DETAIL "B".

2	CONN, 24 PIN DIP	1210722-02	2									
1	CABLE 24 COND 24 AWG	9107730-03	1									
DESCRIPTION		DWG. PART NO.	ITEM NO.									
UNLESS OTHERWISE SPECIFIED DIMENSIONS ARE IN INCHES												
ANGLES 90° ± 30'	CLASS OF ACCURACY	NOMINAL DIMENSIONS RANGE INCHES										
SURFACE QUALITY	(CHECK LAYER)	OVER 0	OVER 0.1	OVER 0.2	OVER 0.3	OVER 0.4	OVER 0.5	OVER 0.6	OVER 0.7	OVER 0.8	OVER 0.9	OVER 1.0
		0.001	0.002	0.003	0.004	0.005	0.006	0.007	0.008	0.009	0.010	0.012
QUANTITY & VARIATION	MICROINCHES	PREFERRED										
THIRD ANGLE PROJECTION	DRN	CHK'D	ENG.	PROJ. ENG.	PROD.	DATE	FIRST USED ON	DT 11	digital			
REMOVE BURRS AND BREAK SHARP CORNERS	DO NOT SCALE DWG	NEXT HIGHER ASSY.		TITLE		CABLE, 24 COND DIP SOCKET						
MATERIAL SEE PARTS LIST	FINISH	SCALE	SIZE	CODE	NUMBER	REV.						
	NC NE	1:1	D	IA	7016165-0-0	A						
			SHEET	OF	DIST.							

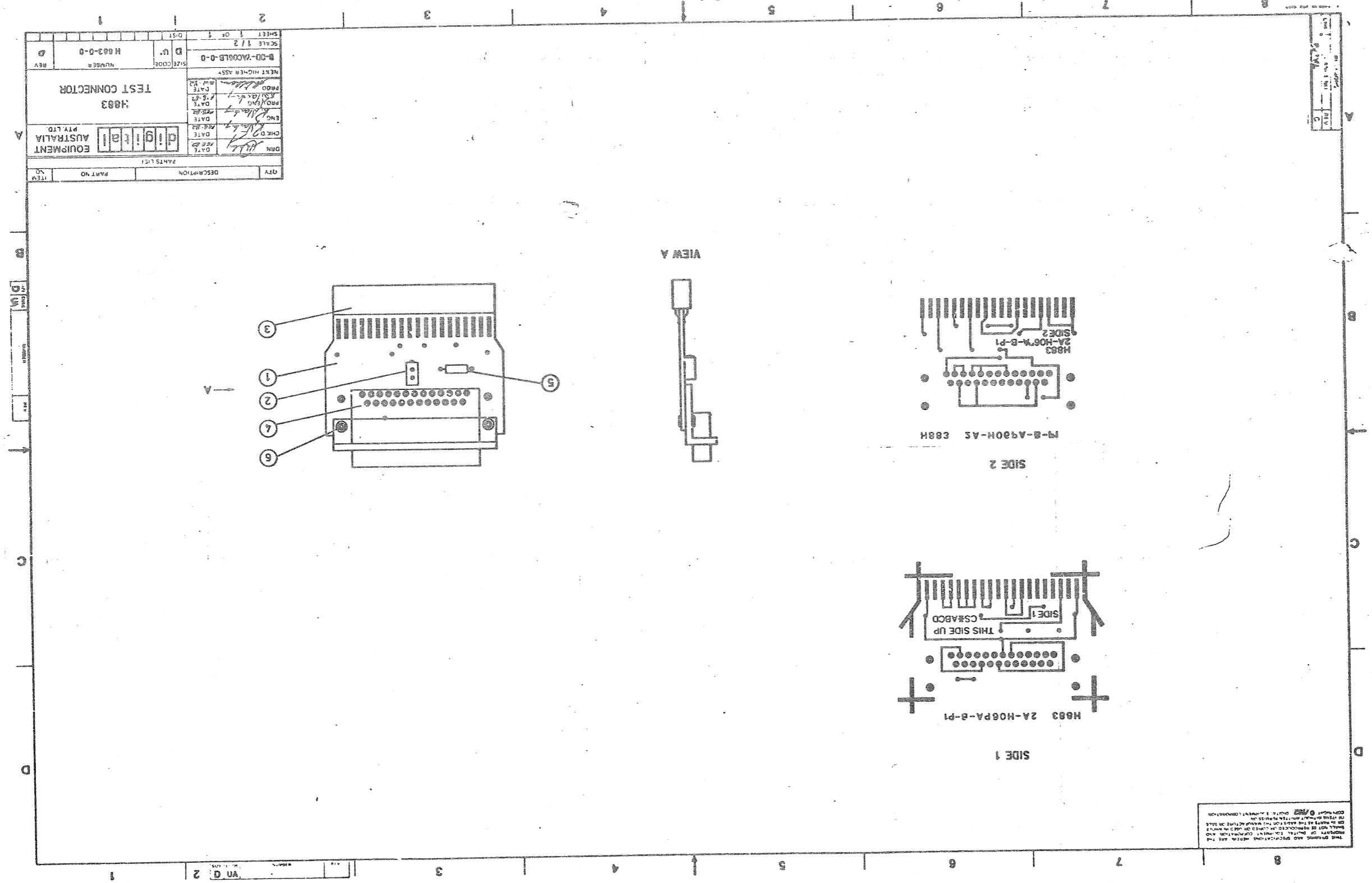
REV.	DATE	BY	APP.
A		J. DEMARINIS	

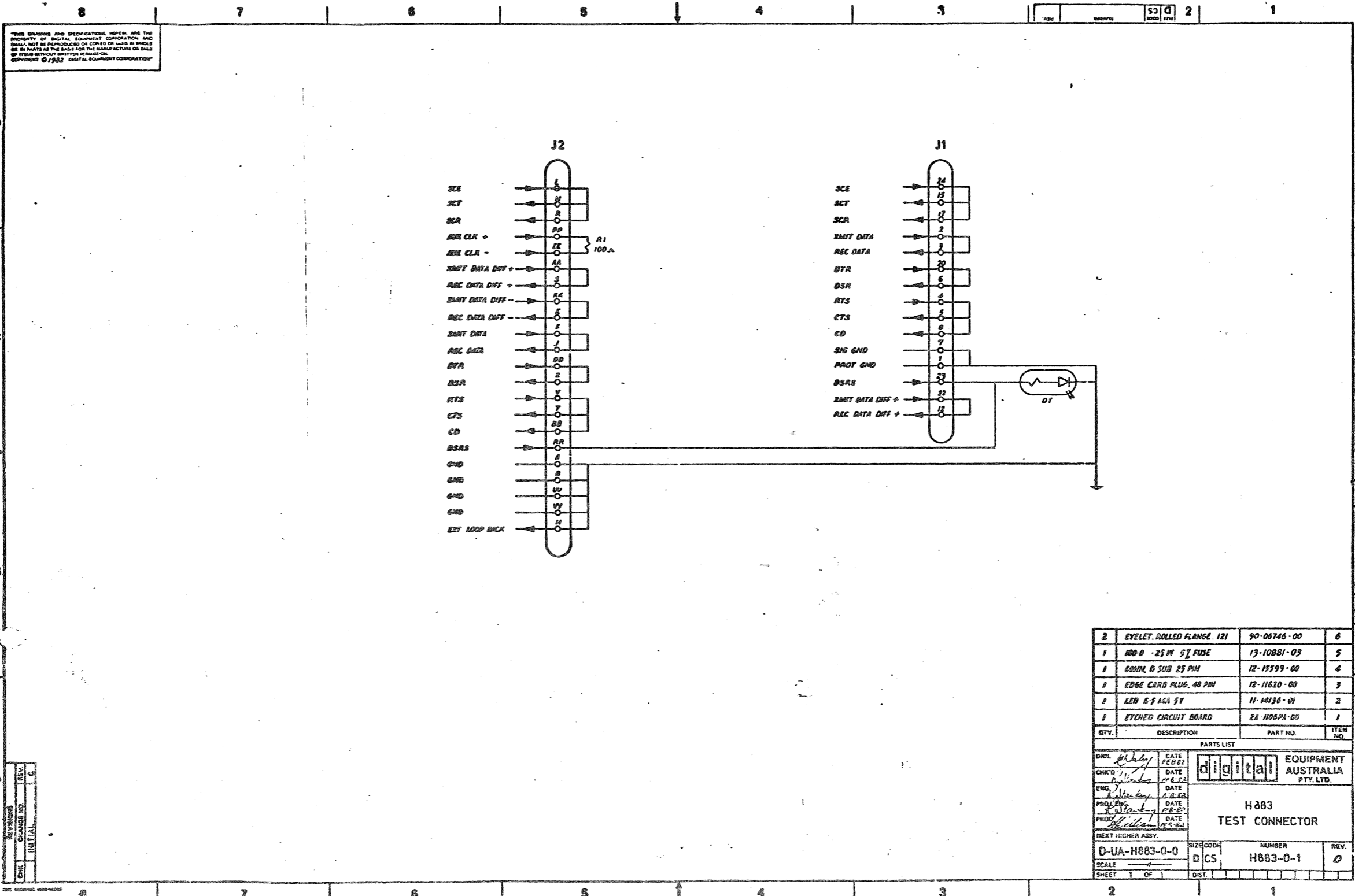
DIA 7016165-0-0-A

REV	NO	DESCRIPTION	QTY
PARTS LIST			
D	U	B-DD-VACUOLB-0-0	1
NEXT HIGH-ER ASSY			
SIZE CODE	H 683-0-0	NUMBER	
TEST CONNECTOR			
H883			
EQUIPMENT AUSTRALIA PTY LTD			
D	U	B-DD-VACUOLB-0-0	1
NEXT HIGH-ER ASSY			
SIZE CODE	H 683-0-0	NUMBER	
TEST CONNECTOR			
H883			
EQUIPMENT AUSTRALIA PTY LTD			
D	U	B-DD-VACUOLB-0-0	1
NEXT HIGH-ER ASSY			
SIZE CODE	H 683-0-0	NUMBER	
TEST CONNECTOR			
H883			
EQUIPMENT AUSTRALIA PTY LTD			



THIS DRAWING AND SPECIFICATIONS ARE THE PROPERTY OF DIGITAL EQUIPMENT AUSTRALIA PTY LTD. IT IS TO BE USED ONLY FOR THE MANUFACTURE OF THE EQUIPMENT SPECIFIED HEREIN. IT IS NOT TO BE REPRODUCED OR TRANSMITTED IN ANY FORM OR BY ANY MEANS, ELECTRONIC OR MECHANICAL, INCLUDING PHOTOCOPYING, RECORDING, OR BY ANY INFORMATION STORAGE AND RETRIEVAL SYSTEM, WITHOUT THE WRITTEN PERMISSION OF DIGITAL EQUIPMENT AUSTRALIA PTY LTD.





THE DIMENSIONS AND SPECIFICATIONS HEREIN ARE THE PROPERTY OF DIGITAL EQUIPMENT CORPORATION AND SHALL NOT BE REPRODUCED OR COPIED OR USED IN WHOLE OR IN PART AS THE BASIS FOR THE MANUFACTURE OR SALE OF ITEMS WITHOUT WRITTEN PERMISSION.
 COPYRIGHT © 1982 DIGITAL EQUIPMENT CORPORATION

QTY.	DESCRIPTION	PART NO.	ITEM NO.
2	EYELET, ROLLED FLANGE, 121	90-06746-00	6
1	100-0 - 25 P 5% FUSE	13-10881-03	5
1	EDMIL 0 SUB 25 PIN	12-15599-00	4
1	EDGE CARD PLUG, 40 PIN	12-11620-00	3
1	LED 6.5 MGA 5V	11-14136-01	2
1	ETCHED CIRCUIT BOARD	2A H06PA-00	1

PARTS LIST		digital EQUIPMENT AUSTRALIA PTY. LTD.	
DRN	DATE	H883 TEST CONNECTOR	
CHK'D	DATE		
ENG	DATE		
PROJ. ENG.	DATE		
PROD.	DATE		
NEXT HIGHER ASSY.		D-UA-H883-0-0	REV. 0
SCALE	DIST.	D CS	NUMBER H883-0-1
SHEET 1 OF 1			

REV.	DATE	INITIALS
1		