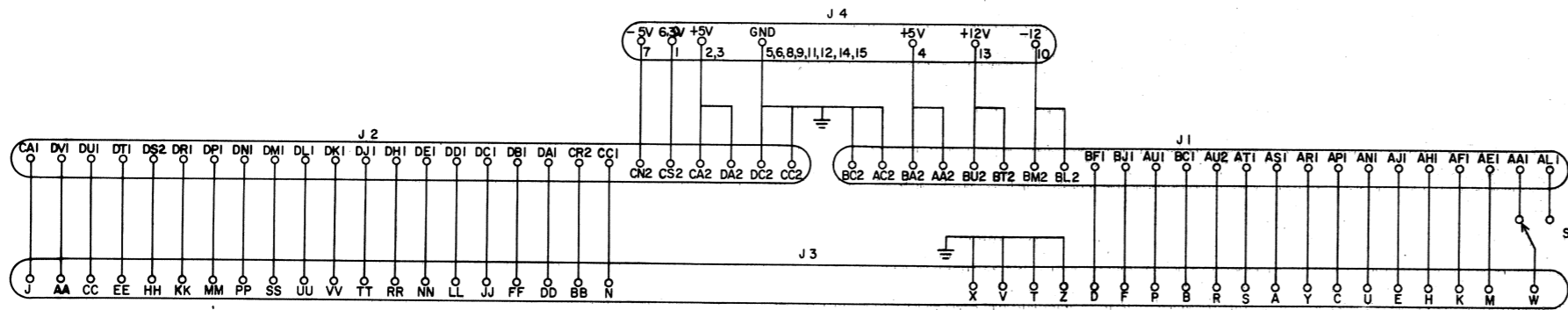
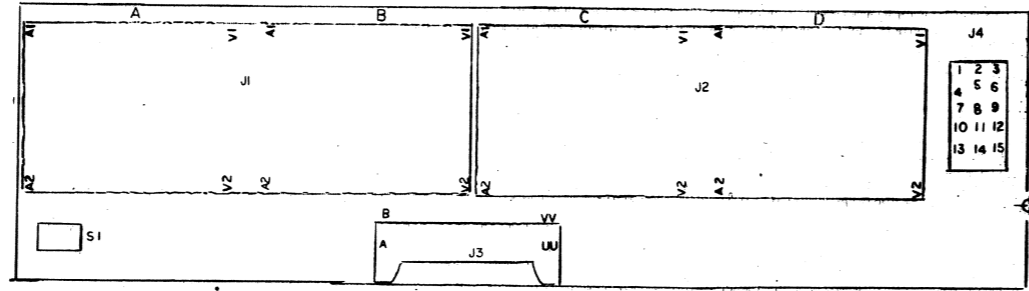


THIS SCHEMATIC IS FURNISHED ONLY FOR TEST AND MAINTENANCE PURPOSES. THE CIRCUITS ARE PROPRIETARY IN NATURE AND SHOULD BE TREATED ACCORDINGLY. COPYRIGHT 1971 BY DIGITAL EQUIPMENT CORPORATION.



NOTE:
ALL IDENTIFIED PINS OF THE SAME DESIGNATIONS ARE BUSSED. e.g. B1, B2

QTY	REF DESIGNATION	DESCRIPTION	DEC PART NO.	REV
1		BRACKET	D-MD-74-0857B-0-1	11
1	S1	SWITCH	1209628	10
15		SOCKETS PIN	1209456	9
1	J4	CONNECTOR	1209350-15	8
1	J3	CONNECTOR	1209941	7
2	J1, J2	CONNECTOR	1205348	6
1		ETCHED CIRCUIT BOARD	5009404	5
		MODULE ECO HISTORY	B-MH-8020-0-6	4
		ASSY/DRILLING HOLE LAYOUT	E-IA-5009494-0-0	3
		X-Y COORDINATE HOLE LOCATION	K-CO-8020-0-4	2
		PARTS LIST		

REVISIONS	CHKD	DATE
1	S. Cooper	4-14-72
2	[Signature]	7/27/72
3	[Signature]	11/1/72
4	[Signature]	11/16/72

TRANSISTOR & DIODE CONVERSION CHART			TITLE	
DEC	EIA		DEC	EIA
		VTO5 BUS BOARD		
SIZE	CODE	NUMBER	REV	
D	CS	E020-0-1	C	
PRINTED CIRCUIT REV.		C		

8	7	6	5	4	3	2	1						
1	T-4	Power	25D68164A17	162	1	R-31	100K 10% 1/2W	6S125534	108	D-13	Diode, low power	48D67120A11	53
1	T-3	Vert. Output	25D65840A22	161	1	R-30	47K 10% 1/2W	6S125892	107	D-12	Rectifier, silicon: 91A05	48S191A05	52
1	T-2	H.V. Transformer: complete	24D69791A11	160	1	R-29	180K 10% 1/2W	6S125531	106	D-11	Rectifier, silicon: 91A05	48S191A05	51
1	T-1	Horiz. Driver	25D67440A03	159	1	R-28	180K 10% 1/2W	6S125531	105	D-10	Rectifier, silicon: 91A05	48S191A05	50
1	SW-1	Switch, slide: DPDT: (115V/230V)	40S10624A01	158	1	R-27	2200 10% 1/2W	6S129875	104	D-9	Rectifier, silicon: 91A05	48S191A05	49
1	R-407	2200 10% 1/2W	6S129875	157	1	R-26	56K10% 1/2W	6S127541	103	D-8	Diode, low power	48D67120A11	48
1	R-406	220 10% 1/2W	6S127099	156	1	R-25	27K 10% 1/2W	6S121300	102	D-7	Diode, dual: DIC: detector	48S134917	47
1	R-405	220 10% 1/2W	6S127099	155	1	R-24	3.3 meg. 10% 1/2W	6S127538	101	D-6	Diode, silicon: zener: D4H	48S137266	46
1	R-404	2200 10% 1/2W	6S129875	154	1	R-23	27K 5% 1/2W	6S10053C67	100	D-5	Rectifier, silicon: 91A05	48S191A05	45
1	R-403	220 10% 1/2W	6S127099	153	1	R-22	270K 10% 1/2W	6S129296	99	D-4	Rectifier, H.V.: sel: D3S	48S137201	44
1	R-402	220 10% 1/2W	6S127099	152	1	R-20	Part of CRT Socket Assembly		98	D-3	Diode, low power	48D67120A11	43
1	R-82	3900 5% 1/2W	6S10053C47	151	1	R-19	Part of CRT Socket Assembly		97	D-2	Diode: pulse limiter; DIK	48S134978	42
1	R-81	Varistor	6C66263A08	150	1	R-18	Part of CRT Socket Assembly		96	D-1	Diode, silicon: DID; Damper	48S134921	41
1	R-79	105 10% 10W WW	17S135589	149	1	R-15	56 10% 1/2W	6S131412	95	C-45	.0015 mf 20% 1.4KV Z5U	21S10330A05	40
1	R-78	5600 10% 1/2W	6S127005	148	1	R-14	82 10% 1/2W	6S127516	94	C-44	.01 mf + 80 - 20% 50V Z5V	21S180C96	39
1	R-77	100 10% 1/2W	6S129221	147	1	R-13	3900 10% 7W WW	17S740259	93	C-43	400 mf/125V, 600 mf/100V, 200 mf/50V, 20 mf/200V lytic	23C65807A47	38
1	R-76	5600 10% 1/2W	6S124506	146	1	R-12	470 10% 1/2W	6S127633	92	C-42	470 pf 10% 500V X5F	21S180A71	37
1	R-75	1000 10% 1/2W	6S121301	145	1	R-11	120 10% 1/2W	6S128226	91	C-41	.01 mf 10% 600V mylar	8S10064A06	36
1	R-73	2200 10% 1/2W	6S129875	144	1	R-8	2700 10% 1/2W	6S119926	90	C-40	1.0 mf 10% 100V mtiz polyester	8S10212A10	35
1	R-72	15K 10% 1/2W	6S124551	143	1	R-7	1800 10% 1/2W	6S122445	89	C-39	.22 mf 10% 160V polyester	8S10191B67	34
1	R-71	2700 10% 1/2W	6S119926	142	1	R-6	4700 10% 1/2W	6S121847	88	C-38	2.2 mf 10% 100V mtiz polyester	8S10212A20	33
1	R-69	1200 10% 3W WW	17S647132	141	1	R-5	1500 10% 1W	6S128955	87	C-37	2.2 mf 10% 100V mtiz polyester	8S10212A20	32
1	R-68	150 10% 1/2W	6S124797	140	1	R-4	330 10% 1/2W	6S127940	86	C-36	.01 mf 10% 160V polyester	8S10191B98	31
1	R-67	18K 10% 1/2W	6S122848	139	1	R-3	470 10% 1/2W	6S127633	85	C-35	.047 mf 10% 160V polyester	8S10191A32	30
1	R-66	4700 10% 1W	6S123364	138	1	R-2	56K 10% 1/2W	6S127541	84	C-34	.005 mf 20% 1KV Z5F	21S180D34	29
1	R-64	10 10% 1W	6S10053F17	137	1	R-1	22K 10% 1/2W	6S125568	83	C-32	220 pf 10% 500V X5F	21S180B87	28
1	R-63	1000 10% 1/2W	6S121301	136	1	R-74	75 5% 1/2W	6S10053C06	82	C-31	.047 mf 10% 160 V polyester	8S10191A32	27
1	R-62	4700 10% 1/2W	6S121847	135	1	R-65	Regulator Adjust: 2K	17D65820A37	81	C-30	.56 mf 10% 250V mtiz polyester	8S10212D33	26
1	R-61	820 10% 1W	6S10053F29	134	1	R-59	Vert. Size: 15 ohms	17D65820A38	80	C-29	.0091 mf 5% 1000V mylar	8S10064881	25
1	R-60	1800 10% 1/2W	6S122445	133	1	R-17	Vert. Linearity: 4K	18D6640IA44	79	C-28	1.0 mf 10% 630V mtiz polyester	8S10212A11	24
1	R-58	82K 5% 1/2W	6S129793	132	1	R-10	Focus: 2 meg.	18D67858A12	78	C-27	.47 mf 10% 630V mtiz polyester	8S10212B53	23
1	R-57	6800 10% 1/2W	6S119930	131	1	Q-24	Video Bias: 4K	18D6640IA54	77	C-26	.001 mf 10% 500V X5F	21S180B51	22
1	R-55	27K 10% 1/2W	6S121300	130	1	Q-23	Vertical: A2T	48S134970	75	C-25	150 mf 10V lytic	23D65282A40	21
1	R-54	39 10% 1/2W	6S131972	129	1	Q-16	Regulator: A8W	48S137368	74	C-24	.01 mf 10% 160V polyester	8S10191B98	20
1	R-53	68 10% 1/2W	6S129874	128	1	Q-15	Reference Amp: A8G	48S137315	73	C-22	.001 mf 10% 500V X5F	21S180B51	19
1	R-52	3300 10% 1/2W	6S124506	127	1	Q-14	Regulator driver: A2J	48S134952	72	C-21	.01 mf 10% 160V polyester	8S10191B98	18
1	R-50	6800 5% 1/2W	6S10053C53	126	1	Q-13	Vert. output: A1C	48S134900	71	C-20	.0082 mf 10% 160V poly-carb	8S10299A73	17
1	R-49	150 10% 1/2W	6S124797	125	1	Q-12	Vert. driver: ABL	48S137325	70	C-19	.01 mf 10% 100V poly-carb	8S10299A73	16
1	R-48	4.7 meg 10% 1/2W	6S10053D21	124	1	Q-11	Vert. oscillator (2): ABL	48S137317	69	C-18	.033 mf 10% 160V polyester	8S10191B90	15
1	R-47	1.5 meg 10% 1/2W	6S129417	123	1	Q-10	Vert. oscillator (1): P4C	48S137324	68	C-17	1.0 mf 15V lytic	23S10229A07	14
1	R-46	33K 10% 1W	6S127634	122	1	Q-9	Horiz output: A6Z	48S137203	67	C-16	.0027 mf 10% 500V Z5F	21S180C41	13
1	R-45	150K 10% 1W	6S120141	121	1	Q-8	Horiz driver: A1M	48S134919	66	C-15	330 pf 10% 500V X5F	21S131625	12
1	R-44	4.7 10% 2W WW	17S10159A04	120	1	Q-7	Horiz pulse shaper: P4C	48S137324	65	C-12	220 pf 20% 100V X5F	21S180D10	11
1	R-43	1500 10% 3W fxd mtl film	17S10130B07	119	1	Q-6	Horiz oscillator: ABH	48S137317	64	C-11	.022 mf 10% 160V polyester	8S10191A21	10
1	R-42	1500 10% 1/2W	6S127513	118	1	Q-5	Sync separator: ABL	48S137325	63	C-10	.22 mf 10% 160V polyester	8S10191B67	9
1	R-41	220 10% 1/2W	6S127099	117	1	Q-4	Video driver: ABH	48S137317	62	C-8	470 pf 10% 500V X5F	21S180B53	8
1	R-40	1000 10% 1W	6S127547	116	1	Q-3	Video output: A1M	48S134919	61	C-7	270 pf 10% 500V X5F	21S180E78	7
1	R-39	82 10% 1/2W	6S127516	115	1	Q-2	2nd video: P4	48S137324	60	C-6	470 mf 16V lytic	23S10255A78	6
1	R-38	1000 5% 1/2W	6S10053C33	114	1	Q-1	1st video: ABH	48S137317	59	C-5	220 Pf 20% 100V X5F	21S180D10	5
1	R-37	1000 10% 1/2W	6S121301	113	1	L-5	Deflection Yoke	24D68523A13	58	C-4	47 mf 35V lytic	23S10255A33	4
1	R-36	390 10% 1/2W	6S125545	112	1	L-4	Horiz width: incis C42 & R68	24V25000A74	57	C-3	220 pf 20% 100V X5F	21S180D10	3
1	R-34	22K 10% 1/2W	6S125568	111	1	L-3	Horiz Linearity	24D69163A09	56	C-2	47 mf 35V lytic	23S10255A33	2
1	R-33	6800 5% 1/2W	6S10053C53	110	1	L-2	Compensating: 1000 HH	24D68801A26	55	C-1	47 mf 35V lytic	23S10255A33	1
1	R-32	3300 10% 1/2W	6S124506	109	1	L-1	Horiz set	24D68822A08	54	C-1			

This drawing and specifications, herein, are the property of Digital Equipment Corporation and shall not be reproduced or copied or used in whole or in part as the basis for the manufacture or sale of items without written permission.

REPRODUCED WITH PERMISSION OF MOTOROLA

D
C
B
A
 BRUNING 40-107 15988
 REVISIONS
 CHANGE NO.
 REV.

FIRST USED ON OPTION/MODEL	QTY.	DESCRIPTION	PART NO.	ITEM NO.
VT05				
PARTS LIST				
UNLESS OTHERWISE SPECIFIED DIMENSION IN INCHES. TOLERANCES		DRN. DATE	EQUIPMENT CORPORATION	
DECIMALS ANGLES		CHK'D. DATE	MAYNARD, MASSACHUSETTS	
XXX = .005	±0° 30'	ENG. DATE	TITLE	
XX = .02		PROJ. ENG. DATE	VT05	
X = .1		PROD. DATE	RASTER DISPLAY	
REMOVE BURRS AND BREAK SHARP CORNERS SURFACE QUALITY				
MATERIAL		NEXT HIGHER ASSY.		
FINISH		A-ML-VT05-0	SIZE CODE	NUMBER
		SCALE	DCS	3010326-0-3
		SHEET	OF	REV. A

D
C
B
A
 REV. A
 NUMBER
 DCS 3010326-0-3

This drawing and specifications, herein, are the property of DuPont Equipment Corporation and shall not be reproduced or copied or used in whole or in part as the basis for the manufacture or sale of items without written permission.

REV.	CHANGE NO.	REV.
A	00036	A
B	00002	B

REV. 100
FORM NO. 1

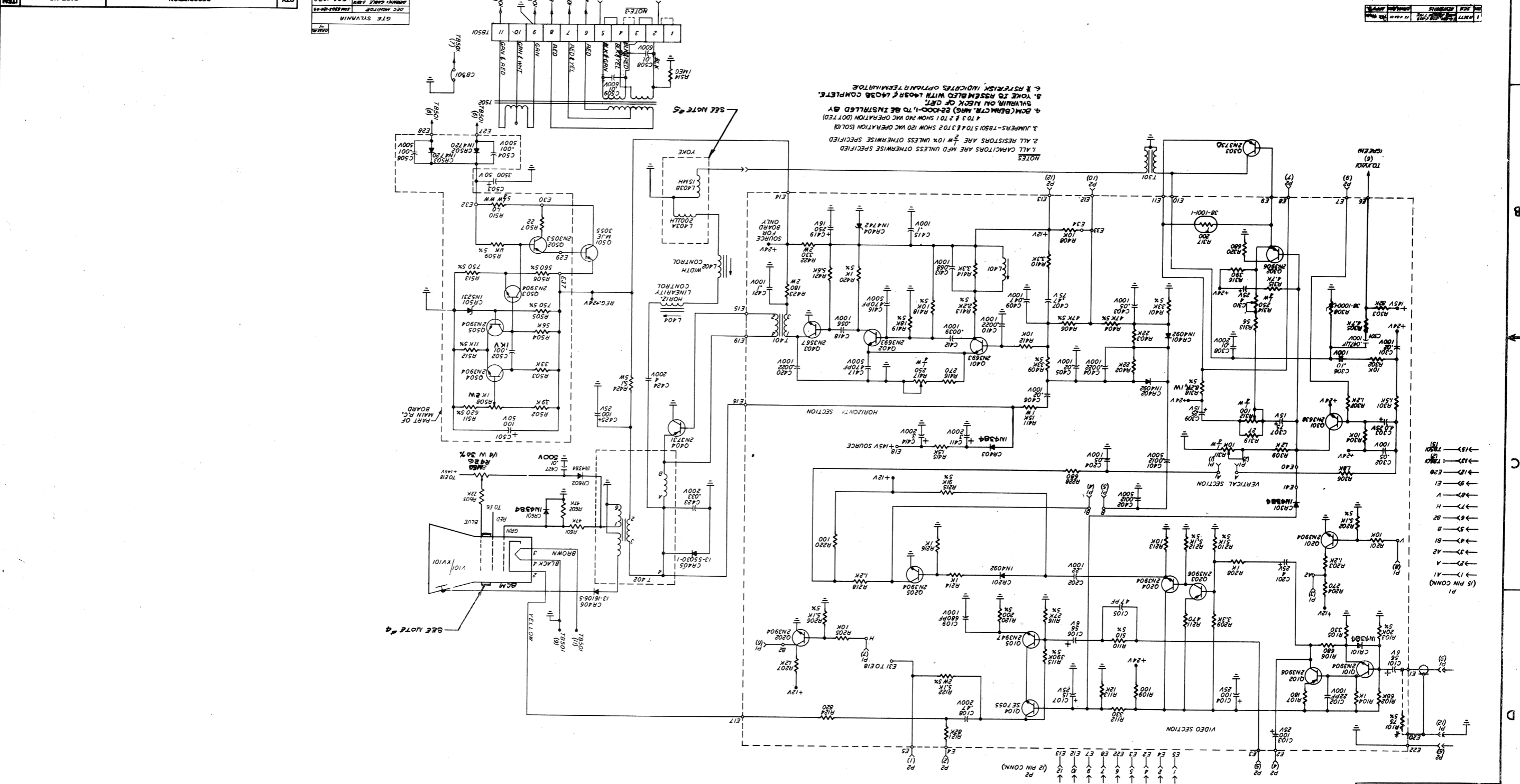
DATE	BY	CHKD.	APP'D.
9/15/71	P. J. PUCI		
9/15/71	P. J. PUCI		

ED. COUGHLIN
3010326-0-2
VT05 RASTER
VT05 RASTER
VT05 RASTER

QTY.	DESCRIPTION	PART NO.	TEMP. NO.
	VT05 RASTER		

DATE	BY	CHKD.	APP'D.
6-9-71	C. B. MCCOY		
7-20-71	L. P. PUCI		
7-20-71	L. P. PUCI		

VT05 RASTER
VT05 RASTER
VT05 RASTER



NOTES:
1. ALL CAPACITORS ARE MFD UNLESS OTHERWISE SPECIFIED.
2. ALL RESISTORS ARE 1/4 W 10% UNLESS OTHERWISE SPECIFIED.
3. JUMPERS-T85015 TO 8 TO 2 SHOW 250 WAC OPERATION (LOUTED).
4. SCHEMATIC (MFG) BE-1000-1 TO BE INSTALLED BY
5. SYMMETRY ON BEAM OF CRT.
6. VOLTAGE MEASUREMENTS WITH 1405R & 1405B COMPLETE.
7. RASTERISH INDICATES OPTIMUM TERMINATION.

DATE	BY	CHKD.	APP'D.
6-9-71	C. B. MCCOY		
7-20-71	L. P. PUCI		
7-20-71	L. P. PUCI		

VT05
FIRST USED ON OPTION/MODEL
UNLESS OTHERWISE SPECIFIED
DIMENSION IN INCHES
TOLERANCES
DECIMAL FRACTIONS ANGLES
FINAL SURFACE QUALITY
REMOVE BURRS AND BREAK SHARP
MATERIAL
FINISH
SCALE
SHEET 2 OF 2
DSC 3010326-0-2
VT05 RASTER
VT05 RASTER
VT05 RASTER

DSC3010326-0-2

REV.	NUMBER	SIZE
B	2-0-920103CSJ	2

This drawing and specifications, herein, are the property of Digital Equipment Corporation and shall not be reproduced or copied or used in whole or in part as the basis for the manufacture or sale of items without written permission.

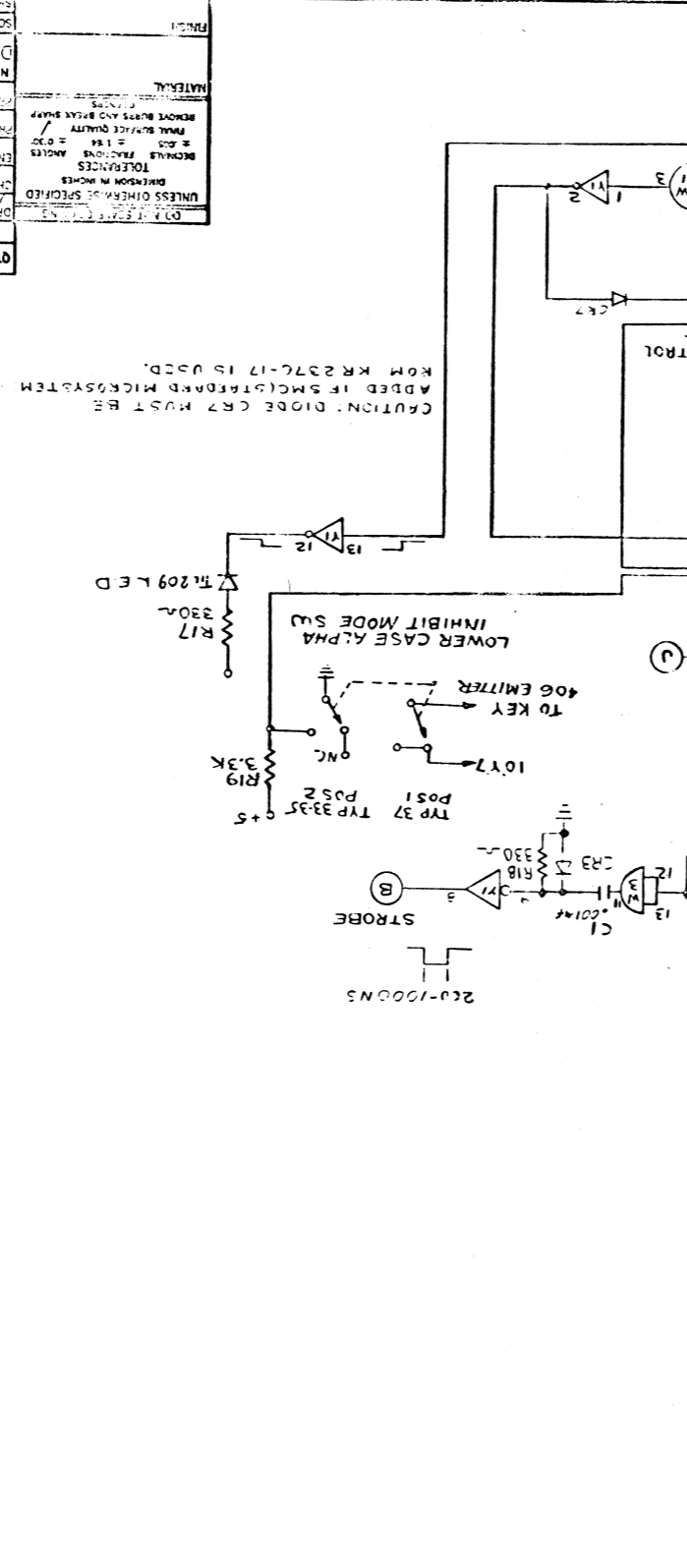
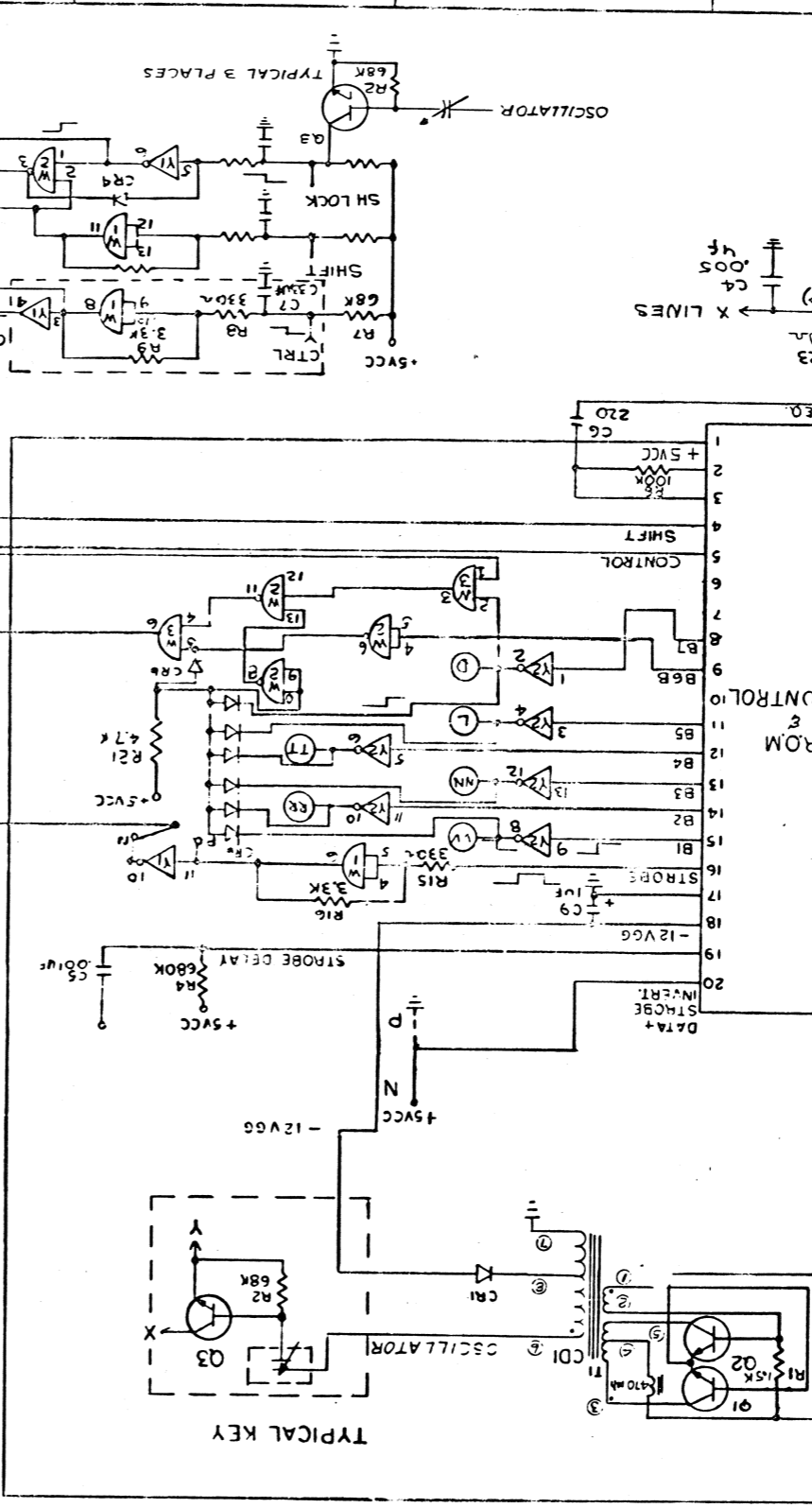
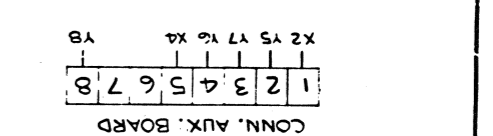
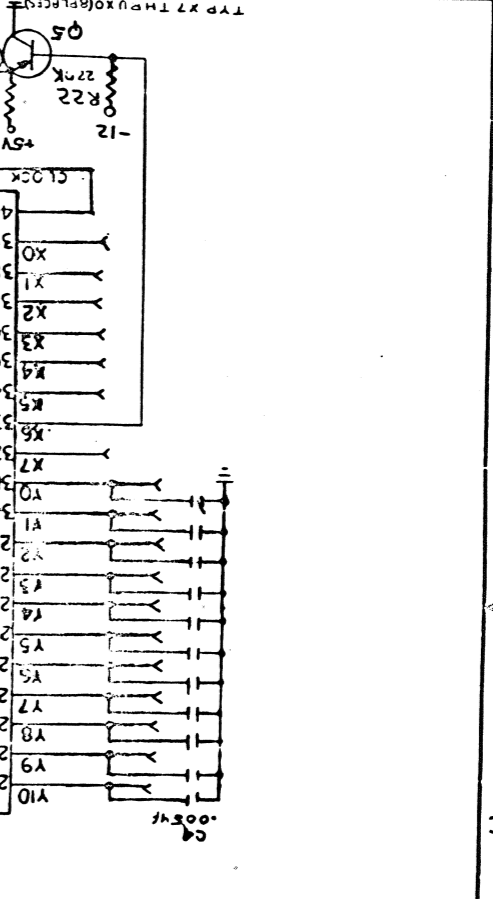
QTY	REF	DESCRIPTION	QTY	REF	DESCRIPTION	QTY	REF	DESCRIPTION	QTY	REF	DESCRIPTION
1	V101	CATHODE RAY TUBE, 12CSP4	131	2	C101, C106	CAPACITOR, 56 uf 6V	83	7	R201, R205, R213, R302, R304, R408, R412	RESISTOR, 10K, 1/2W, 10%	35
1	P2	PIN, CONN., HOUSING, CONN, PIN	130	1	R603	RESISTOR, 22K 1W 10%	82	1	R124	RESISTOR, 820, 1/2W, 10%	34
1	P1	HOUSING, CONN, PIN	129	2	R601, R602	RESISTOR, 47K 1/2W 10%	81	1	R122	RESISTOR, 5.1K, 2W, 5%	33
1	PC-1	PC BOARD	128	1	R514	RESISTOR, 1 MEG 1/2 W 10%	80	2	R121, R303	RESISTOR, 82K, 1/2W, 10%	32
1	XV101	CRT SOCKET	127	1	R512	RESISTOR, 11K 1/2W 5%	79	1	R120	RESISTOR, 200, 1/2W, 5%	31
4	BCM	BEAM CTR. MAG.	126	1	R511	RESISTOR, 620 1/2W 5%	78	1	R116	RESISTOR, 27K, 1/2W, 5%	30
1	CB501	CIRCUIT BREAKER	125	1	R510	RESISTOR, 1.0 5-1/2W WW	77	1	R115	RESISTOR, 390K, 1/2W, 5%	29
1	T502	TRANSFORMER, POWER	124	1	R509	RESISTOR, 1.1K 1/2W 5%	76	1	R113	RESISTOR, 12K, 1/2W, 10%	28
1	T402	TRANSFORMER, ASSY HS & HV	123	1	R507	RESISTOR, 22 1/2W 10%	75	1	R110	RESISTOR, 510, 1/2W, 5%	27
1	T401	TRANSFORMER, HORIZ BUFFER	122	1	R506	RESISTOR, 560 1/2W 5%	74	2	R109, R220	RESISTOR, 100, 1/2W, 10%	26
1	T301	TRANSFORMER, VERT-SCAN	121	2	R505, R513	RESISTOR, 750 1/2W 5%	73	1	R107	RESISTOR, 180, 1/2W, 10%	25
1	L404	COIL, HORIZ LINEARITY CONTROL	120	1	R504	RESISTOR, 56K 1/2W 10%	72	3	R106, R228, R320	RESISTOR, 680, 1/2W, 10%	24
2	L403A, L403B	COIL, YOKE	119	1	R508	RESISTOR, 1K, 2W, POT.	71	2	R105, R112	RESISTOR, 330, 1/2W, 10%	23
1	L402	COIL, CONTROL WIDTH	118	1	R503	RESISTOR, 33K 1/2W, 10%	70	4	R104, R208, R214, R2T6	RESISTOR, 1K, 1/2W, 10%	22
1	L401	COIL HORIZ FREQ	117	1	R502	RESISTOR, 3.9K, 1/2W, 10%	69	1	R103	RESISTOR, 20K, 1/2W, 5%	21
2	C508, C509	CAPACITOR, .01 uf 600V	116	1	R426	RESISTOR, 2MEG, 1/4W, 30% POT	68	1	R102	RESISTOR, 68K, 1/2W, 10%	20
2	C504, C506	CAPACITOR, .001 uf 500V	115	1	R424	RESISTOR, 5.1, 5W, WW	67	1	R101	RESISTOR, 75, 1W, 5% OPTIONAL TERMINATOR	19
1	C503	CAPACITOR, 3500 uf 50V	114	1	R423	RESISTOR, 180, 2W, 10%	66	1	Q502	TRANSISTOR, 2N3053	18
1	C502	CAPACITOR, .001 uf 1KV	113	1	R422	RESISTOR, 330, 2W, 10%	65	1	Q501	TRANSISTOR, 2N3055	17
1	C501	CAPACITOR, 100 uf 50V	112	1	R421	RESISTOR, 5.6K, 1/2W, 10%	64	1	Q404	TRANSISTOR, 2N3051	16
1	C427	CAPACITOR, .01 uf 500V	111	1	R420	RESISTOR, 1K 1/2W, 5%	63	1	Q403	TRANSISTOR, 2N3051	15
1	C424	CAPACITOR, 4 uf 200V	110	1	R419	RESISTOR, 18K 1/2W, 5%	62	2	Q401, Q402	TRANSISTOR, 2N3051	14
1	C423	CAPACITOR, .033 uf 200V	109	1	R418	RESISTOR, 10K, 1/2W, 5%	61	1	Q303	TRANSISTOR, 2N2730	13
1	C419	CAPACITOR, 250 uf 16V	108	1	R417	RESISTOR, 250, 1/4W, POT	60	1	Q301	TRANSISTOR, 2N3051	12
1	C418	CAPACITOR, .056 uf 100V	107	1	R413	RESISTOR, 2.2K 1/2W, 5%	59	1	Q105	TRANSISTOR, 2N3947	11
2	C416, C417	CAPACITOR, 470 pf 500V	106	1	R411	RESISTOR, 15K 1W, 10%	58	1	Q104	TRANSISTOR, SE-7055	10
1	C413	CAPACITOR, .068 uf 100V	105	2	R404, R406	RESISTOR, 47K, 1/2W, 5%	57	3	Q102, Q203, Q302	TRANSISTOR, 2N3906	9
1	C412	CAPACITOR, .0039 uf 100V	104	2	R402, R403	RESISTOR, 22K 1/2W, 10%	56	8	Q101, Q201, Q202, Q204, Q205, Q503, Q504, Q505	TRANSISTOR, 2N3904	8
2	C411, C414	CAPACITOR, 3 uf 200V	103	2	R401, R409	RESISTOR, 33K, 1/2W, 5%	55	2	CR502, CR503	DIODE SILICON 1N4720	7
3	C404, C410, C420	CAPACITOR, .0022 uf 100V	101	1	R319	RESISTOR, 27, 1/2W, 10%	54	1	CR501	DIODE, ZENER 5-1V, 1N5231	6
2	C401, C402	CAPACITOR, .0012 uf 500V	100	1	R318	RESISTOR, 8.2K 1W, 5%	53	1	CR406	DIODE, SELENIUM	5
1	C309	CAPACITOR 25 uf 15V	99	1	R317	RESISTOR, 200, THERMISTOR	52	1	CR404	DIODE, ZENER, 12V 1N4742	4
1	C308	CAPACITOR, .01 uf 200V	98	1	R316	RESISTOR, 390, 1/2W, 10%	51	1	CR405	DIODE SILICON	3
1	C307	CAPACITOR, 75 uf, 15V	97	1	R314	RESISTOR, 250, 1/4W, POT. DUAL	50	3	CR201, CR401, CR402	DIODE SILICON, 1N4092	2
3	C306, C415, C421	CAPACITOR, .1 uf 100V	96	1	R313	RESISTOR, 56, 1/2W, 10%	49	5	CR101, CR301, CR403, CR602	DIODE, SILICON, 1N4384	1
2	C304, C409	CAPACITOR, .047 uf 100V	95	1	R312	RESISTOR, 100, 1/4W, POT	48				
1	C407	CAPACITOR, .47 uf 75V	94	1	R311	RESISTOR, 10K, 1/4W, POT. DUAL	47				
3	C301, C405, C406	CAPACITOR, .02 uf 100V	93	1	R308	RESISTOR, VDR, 1/2W, 10%	46				
3	C204, C302, C403	CAPACITOR, .05 uf 100V	92	1	R306	RESISTOR, 1.8K, 1/2W, 10%	45				
1	C202	CAPACITOR, .22 uf 100 V	91	2	R305, R315	RESISTOR, 4.7K, 1/2W, 10%	44				
3	C201, C303, C310	CAPACITOR, 4 uf 25V	90	2	R301, R415	RESISTOR, 1.5K, 1/2W, 10%	43				
1	C109	CAPACITOR, 680 pf 100V	89	1	R215	RESISTOR, 91K, 1/2W, 5%	42				
1	C108	CAPACITOR, .47 uf 200V	88	1	R211	RESISTOR, 470, 1/2W, 10%	41				
1	C107	CAPACITOR, 15 uf 25V	87	1	R210	RESISTOR, 51K, 1/2W, 5%	40				
1	C105	CAPACITOR, 47 pf 500V	86	3	R209, R410, R414	RESISTOR, 3.3K, 1/2W, 10%	39				
3	C103, C104, C425	CAPACITOR, 100 uf 25V	85	2	R204, R416	RESISTOR, 270, 1/2W, 10%	38				
1	C102	CAPACITOR, 22 pf 100V	84	5	R203, R207, R218, R307, R309	RESISTOR, 1.2K, 1/2W 10%	37				
				3	R202, R206, R212	RESISTOR, 5.1K, 1/2W, 5%	36				

FIRST USED ON OPTION/MODEL		VT05	
UNLESS OTHERWISE SPECIFIED DIMENSION IN INCHES TOLERANCES		DRN CBM/Key	DATE 6-14-71
DECIMALS	ANGLES	CHKD K. Miller	DATE 7-20-71
.XXX ± .005	± 0° 30'	ENG K. Miller	DATE 7-20-71
.XX ± .02		PROJ. ENG. K. Miller	DATE 7-20-71
.X ± .1		DATE 7-15-71	
REMOVE BURRS AND BREAK SHARP CORNERS SURFACE QUALITY		DATE	
MATERIAL		NEXT HIGHER ASSY.	
FINISH		SCALE	
SHEET 2 OF 2		DIST.	
TITLE		REV.	
VT05 RASTER DISPLAY		B	
SIZE CODE		NUMBER	
D CS 3010326-0-2		3010326-0-2	

REVISIONS
CHANGE NO. REV.
CHK

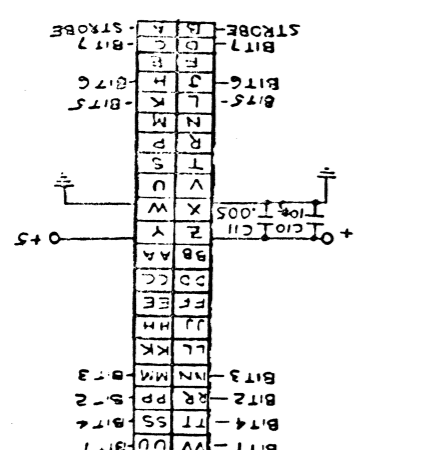
This drawing and the information contained hereon are the property of Digital Equipment Corporation and shall not be reproduced or copied in whole or in part without the written permission of Digital Equipment Corporation.

REV	CHANGE NO	REVISIONS
1	1	INITIAL DESIGN
2	1	REVISION
3	1	REVISION
4	1	REVISION
5	1	REVISION
6	1	REVISION
7	1	REVISION
8	1	REVISION



QTY	DESCRIPTION	PART NO.	REF. NO.
1	IC DESCRIPTION <td></td> <td></td>		
1	SYMBOL TYPE <td></td> <td></td>		
1	W1, W3 <td>7408</td> <td></td>	7408	
1	W2 <td>7400</td> <td></td>	7400	
1	K.O.M. <td>0017</td> <td></td>	0017	
1	TRANS. <td></td> <td></td>		

IC DESCRIPTION	SYMBOL TYPE	W1, W3	W2	K.O.M.	TRANS.
7404		7408	7400	0017	



1-0-5-66045 SC D 2

DEC KEYBOARD 2

DIGITAL EQUIPMENT CORPORATION
MAYNARD, MASSACHUSETTS

PARTS LIST

MADE BY D. SCHMIDT
DATE 1-4-72
ENG. G. Beckner
DATE 3-14-72

CHECKED K. RUSS
DATE 1-17-72
PROD
DATE 3-14-72

SECTION
ISSUED SECT.

DWG NO. / PART NO. DESCRIPTION

ITEM NO.	DWG NO. / PART NO.	DESCRIPTION	SECTION	ISSUED SECT.	QUANTITY	VARIATION
1	D-17-5009960-0-0	KEYBOARD P.C. BOARD (D4455E)			1	
2	B-ND-7409524-0-0	TORSION BAR HINGE (A1012)			2	
3	B-ND-7409519-0-0	TORSION BAR (B2007-4)			1	
4	D-ND-7409523-0-0	9 KEY SPACE BAR (D4447)			1 *	
5	C-ND-7409518-0-0	SHAFT CAP (B2C06)			1	
6	D-ND-7409522-0-0	SPACE BAR GUIDE (C3020)			2	
7	9009160	SPRING (HEAVY) (C017)			1	
8	D-ND-7409517-0-0	13° SPACE BAR INSERT SHAFT (B2097)			2	
9	C-ND-7409525-0-0	KEY GUIDES (D4073-1)			58	
10	C-ND-7409516-0-0	COUPLING PLATE (B2004)			58	
11	D-PS-9009148-0-0	KEY CAP SINGLE (D4074)			56 *	
12	B-ND-7409514-0-0	DUST COVER (R.H.)			1	
13	B-ND-7409515-0-0	DUST COVER (L.H.)			1	
14	B-ND-7409510-0-0	DUST COVER (SINGLE CHANNEL)			2	
15	9009162	DRIVE SCREW			58	
16	B-ND-7409538-0-0	CHANNEL SPACER (A1149)			8	
17	D-ND-7409523-0-0	STEPPED SHAFT (C3061)			58	
18	D-ND-7409555-2-0	CHANNEL (ROW #1) (D4454)			1	
19	D-ND-7409535-0-0	CHANNEL ROW #2) (D4454)			1	
20	D-ND-7409556-0-0	CHANNEL (ROW #3) (D4454)			1	
21	D-ND-7409557-0-0	CHANNEL (ROW #4) (D4454)			1	
22	D-ND-7409558-0-0	CHANNEL (ROW #5) (D4454)			1	

TITLE KEYBOARD ASSY
ASSY NO. D-AD-5409945-0-0
SIZE CODE A PL
NUMBER 5409945-0-0
REV. F 000.3
SHEET 1 OF 4

DIGITAL EQUIPMENT CORPORATION
MAYNARD, MASSACHUSETTS

PARTS LIST

MADE BY D. SCHMIDT
DATE 1-4-72
ENG. G. BECKNER
DATE 3-14-72

CHECKED K. RUSS
DATE 1-17-72
PROD
DATE 3-14-72

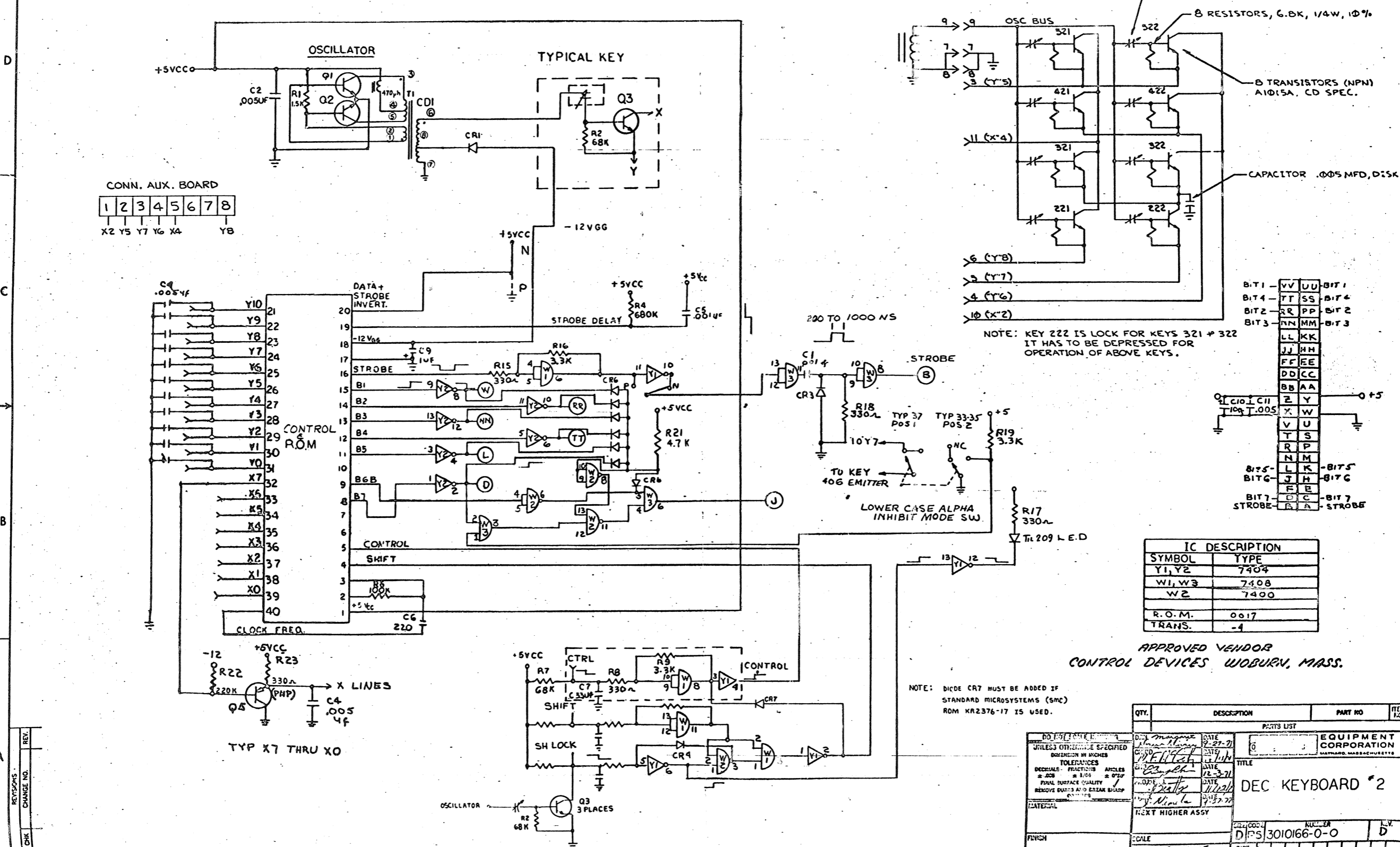
SECTION
ISSUED SECT.

DWG NO. / PART NO. DESCRIPTION

ITEM NO.	DWG NO. / PART NO.	DESCRIPTION	SECTION	ISSUED SECT.	QUANTITY	VARIATION
23	C-AD-7008780-0-0	LED CAP ASSY			1	
24	9009161	SPRING (LIGHT) (C015)			57	
25	9006505	POP RIVETS			2	
26	9006002-4	SL BINDER HD SCR. #2-56 X 5/16 LG			8	
27	9006001-4	SL BINDER HD SCR. #2-56 X 1/4 LG			8	
28	11-00114	DEC D664 DIODE			11	CR1, CR4, CP6(7) CR3
29	11-001260	MIN. SLIDE SWITCH STACK POLE			1	CR3
30	12-10919	RES. 5% 1/4W 3.3K			1	SW1
31	12-01424	RES. 5% 1/4W 68K			1	R18
32	13-00439	RES. 5% 1/4W 3.3K			4	R19 R169 (2)
33	13-01327	RES. 5% 1/4W 68K			61	R2, R5, R7 (3)
34	13-10867	RES. 5% 1/4W 680K			1	R4 (1)
35	13-00114	RES. 5% 1/4W 330K			1	R21 (1)
36	13-02466	RES. 5% 1/4W 100K			1	R6
37	13-00295	RES. 5% 1/4W 330 OHM			14	R8 (3) R17 (1) R18 (1) P23 (8) R18
38	13-00447	RES. 5% 1/4W 4.7K			1	R21 (1)
39	13-02091	RES. 5% 1/4W 330K			1	R24
40	16-11317	CHOKE 470 UH 5%			1	L1
41	19-10155	DEC 7408			2	R1, W3
42	19-05575	DEC 7400			1	Y2
43	19-09686	DEC 7404			2	Y1, Y2
44	2111047	R.O.M. GI 0017			1	POM

TITLE KEYBOARD ASSY
ASSY NO. D-AD-5409945-0-0
SIZE CODE A PL
NUMBER 5409945-0-0
REV. F 000.3
SHEET 2 OF 4

This drawing and specifications herein are the property of Digital Equipment Corporation and shall not be reproduced in whole or in part or by any means without written permission.



CONN. AUX. BOARD

1	2	3	4	5	6	7	8
X2	Y5	Y7	Y6	X4			Y8

BIT 1	VV	UU	BIT 1
BIT 4	TT	SS	BIT 4
BIT 2	RR	PP	BIT 2
BIT 3	NN	MM	BIT 3
	LL	KK	
	JJ	HH	
	FF	EE	
	DD	CC	
	BB	AA	
	Z	Y	+5
	X	W	
	V	U	
	T	S	
	R	P	
	N	M	
BIT 5	L	K	BIT 5
BIT 6	J	H	BIT 6
	F	E	
BIT 7	B	C	BIT 7
	A		STROBE

IC DESCRIPTION	
SYMBOL	TYPE
Y1, Y2	7404
W1, W3	7408
W2	7400
R.O.M.	0017
TRANS.	-4

APPROVED VENDOR
 CONTROL DEVICES WOBURN, MASS.

QTY.	DESCRIPTION	PART NO.	REVISION

DATE	12-27-71	DATE	12-3-71
DESIGNED BY	W. J. ...	DATE	12-3-71
CHECKED BY	...	DATE	12-3-71
APPROVED BY	...	DATE	12-3-71

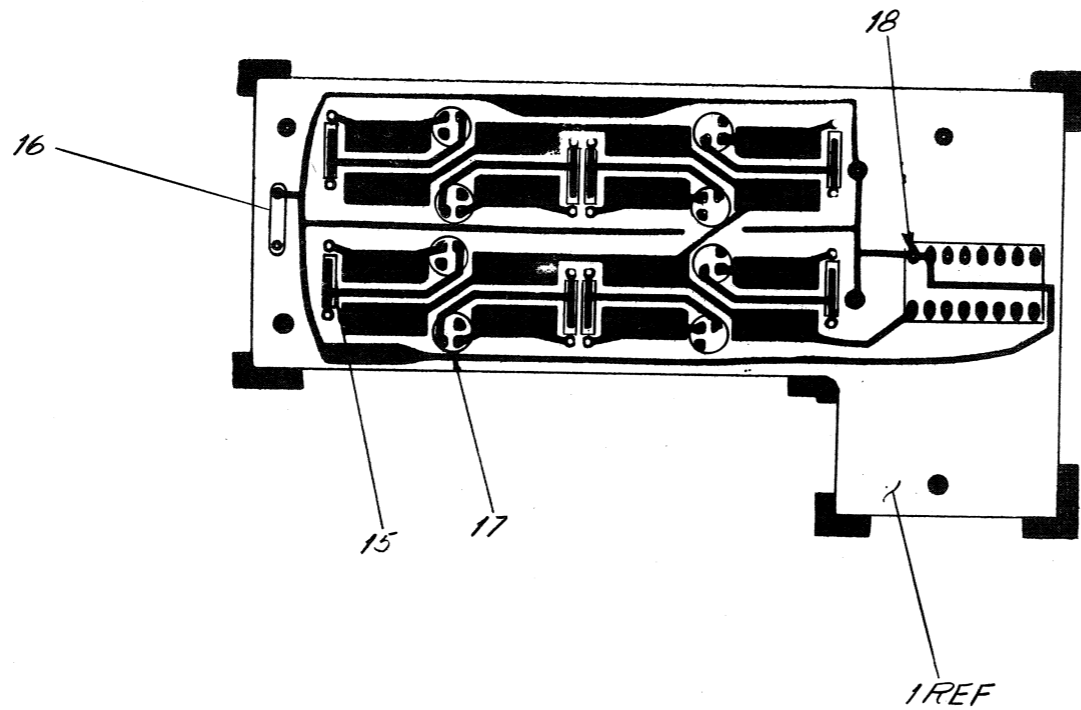
SCALE	1:1
SHEET	19 OF 15

REVISIONS
 CHANGE NO. REV.
 DEC FORM 110
 100 100

DIGITAL EQUIPMENT CORPORATION MAYNARD, MASSACHUSETTS PARTS LIST				QUANTITY / VARIATION																
MADE BY P. MARCOTTE		CHECKED <i>R Cook</i>		SECTION																
DATE 1-14-71		DATE 2/11/71		1																
ENG <i>J Graham</i>		PROD <i>H. Burch</i>		ISSUED SECT.																
DATE 2-12-71		DATE 3-4-71		1																
ITEM NO.	DWG NO. / PART NO.	DESCRIPTION																		
1	C-MD-7408564-0-0	BRACKET, POTS MTG		1																
2	1300370	POT 1K 2W 10%		1																
3	1302205	POT 10K 2W 10%		2																
4	1310311	POT 250K 2W 10%		1																
5	1209351-12	CONN MATE-N-LOC #1-480278-0		1																
6	1209378-01	PIN CON AMP #60620-4 LOOSE		9																
7	C-SC-1210227-0-0	KNOB, 1" DIA		4																
8	9107350-00	WIRE #22 AWG STRD TEF INS (BLK)		A/R																
9	9107400-97	WIRE #22 AWG STRD TEF INS (WHT/VIO)		A/R																
10	9107400-96	WIRE #22 AWG STRD TEF INS (WHT/BLU)		A/R																
11	9107400-95	WIRE #22 AWG STRD TEF INS (WHT/GRN)		A/R																
12	9107400-94	WIRE #22 AWG STRD TEF INS (WHT/YEL)		A/R																
13	9107400-93	WIRE #22 AWG STRD TEF INS (WHT/ORN)		A/R																
14	9107400-92	WIRE #22 AWG STRD TEF INS (WHT/RED)		A/R																
15	9107400-90	WIRE #22 AWG STRD TEF INS (WHT/BLK)		A/R																
16	9107400-91	WIRE #22 AWG STRD TEF INS (WHT/BRN)		A/R																
17	9107305-02	TUBING, HEAT SHRINKABLE		A/R																
18	9007031	TIE WRAP PANDUIT SSTIM		3																
19	9006291-10	SCR, SOC HD SET #6-32 X 1/4 LG		4																
TITLE		ASSY NO.		SIZE	CODE	NUMBER				REV.	ECO NO.									
POT ASSY		D-AD-7007232-0-0		A	PL	7007232-0-0				A	VT05-00014									
		SHEET 1 OF 1		DIST.																

This drawing and specifications, herein, are the property of Digital Equipment Corporation and shall not be reproduced or copied or used in whole or in part as the basis for the manufacture or sale of items without written permission.

SIZE CODE D AD 5410224-0-0 REV 2



REVISIONS	NO.	REV.
CHK		
CHANGE NO.		

QTY.	DESCRIPTION	PART NO.	ITEM NO.
PARTS LIST			
DRN	<i>B. Shroyer</i>	DATE	7/20/72
CHK'D	<i>B. Shroyer</i>	DATE	7/27/72
PROJ. ENG.	<i>R. J. Jackson</i>	DATE	7/1/72
PROD.	<i>R. Davis</i>	DATE	9/1/72
MATERIAL		NEXT HIGHER ASSY.	
FINISH		SCALE NONE	
SHEET 2 OF 2		DIST.	

digital EQUIPMENT CORPORATION
MAYNARD MASSACHUSETTS

TITLE
CURSOR BOARD ASSY (KEYBOARD)

SIZE CODE NUMBER REV.
D AD 5410224-0-0 A