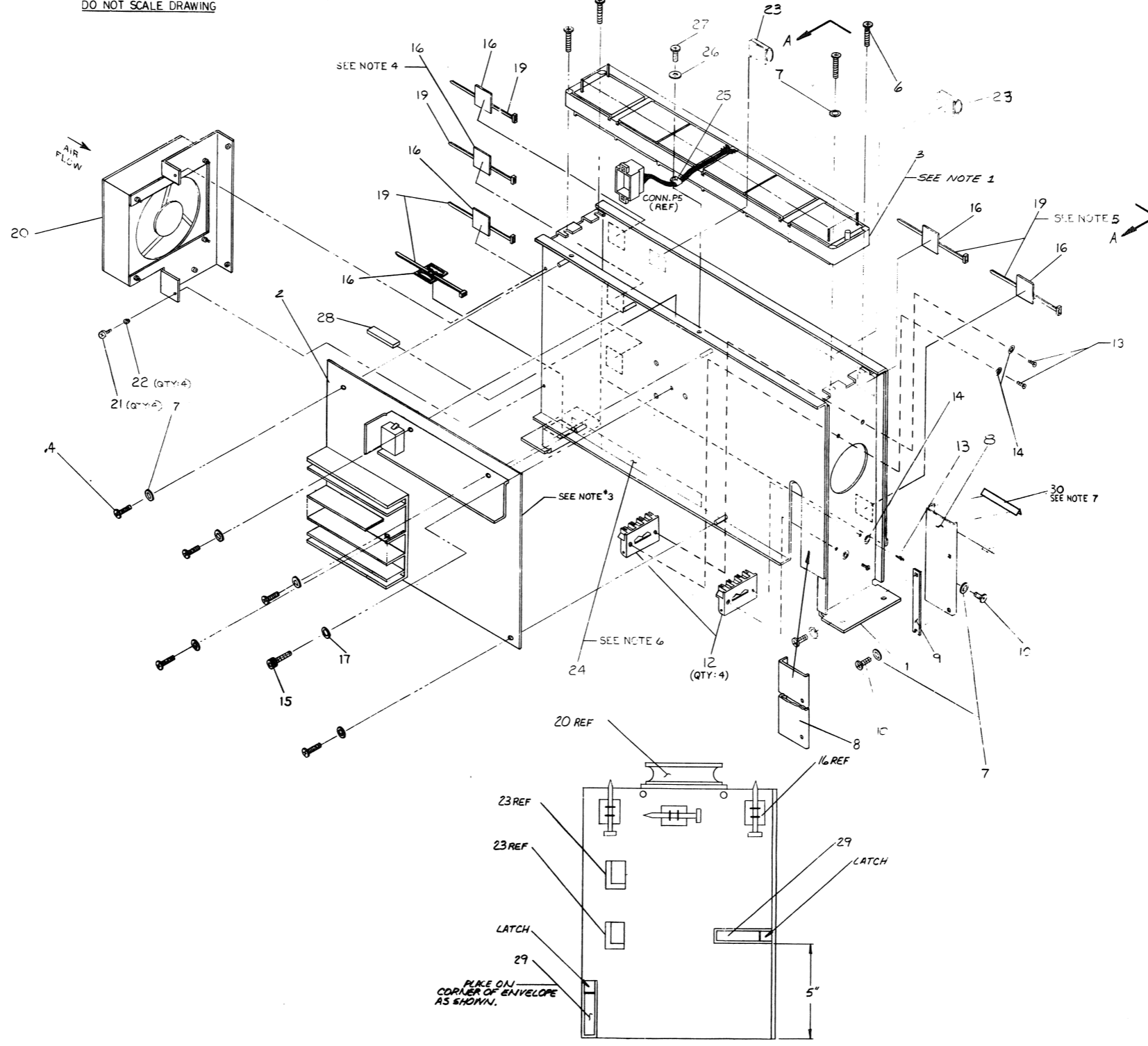
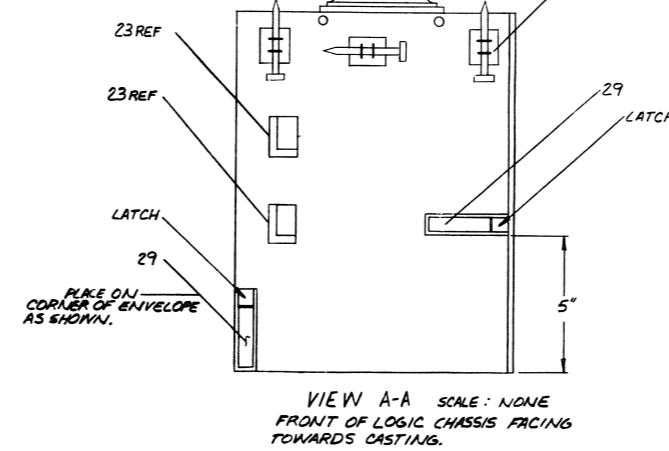


THIS DRAWING AND SPECIFICATIONS ARE THE PROPERTY OF ANALOG EQUIPMENT CORPORATION AND SHALL NOT BE REPRODUCED OR TRANSMITTED IN ANY FORM OR BY ANY MEANS, ELECTRONIC OR MECHANICAL, INCLUDING PHOTOCOPYING, RECORDING, OR BY ANY INFORMATION STORAGE AND RETRIEVAL SYSTEMS WITHOUT THE WRITTEN PERMISSION OF ANALOG EQUIPMENT CORPORATION.

DO NOT SCALE DRAWING



- NOTES:**
- ITEM 3 TO BE MOUNTED UNDER FLANGES.
 - WHEN INSERTING MODULES INTO LOGIC ASSEMBLY, CARD GUIDES (ITEM 12) WILL BE ADJUSTED BY SLIDING RIGHT OR LEFT SO AS TO PROPERLY ALIGN P.C. CARDS.
 - BEFORE ASSEMBLING ITEMS 1 AND 2, COAT MATING SURFACE OF DIODE HEAT SINK WITH THERMAL COMPOUND.
 - PLACE ADHESIVE BACK MOUNT DIRECTLY IN MIDDLE OF ENVELOPE, FLUSH WITH TOP RIDGE.
 - DELETE THESE TWO MOUNTS ON TU16U DRIVES.
 - INSTALL ITEM 24 AS SHOWN ALONG EDGE OF FLANGE D1 INSIDE PANEL SURFACE 1.375 IN. FROM TOP PANEL.
 - APPLY ADHESIVE (ITEM 31) TO TOP EDGE OF CABLE CLAMP BRACKET (ITEM 8); THEN AFF. X 30MM (ITEM 30) TO EDGE.



QTY.	DESCRIPTION	PART NO.	ITEM NO.
1	HY BOND ADHESIVE	9007594	31
1	GROMMET, BLACK 1.25"	9008209	30
2	CLIP, FLAT CABLE, ADHESIVE BACK	1218715-00	24
1	IND. ELAPSED TIME	1210721	23
1	SCR. PHL PAN HD 6-32 x 50 LG	9006024-01	27
1	WASHER FLAT #6	9006636	26
1	CLAMP, CABLE 3/8 DIA	9007083	25
A/R	TAPE, SCOTCH 3/4 WIDE	9008815-X	34
2	CLIP, PVC HARNESS	9008341	23
1	WASHER LOCK #4	9006688	21
1	SCR PAN HD 40 x 13 LG	9006012-1	21
1	BRACKET, FAN ASSY	D-44-7012911	20
6	TIE WRAP	9007022	19
A/R	THERMAL COMPOUND	9008866	18
1	WASHER, SPLIT LOCK #8	9006680	17
6	MOUNT, ADHESIVE BACK	9008264	16
1	SCREW, SOCKET HD 8-32 x 1/2	9008464-8	15
1	ELECTROSTATIC SHIELD	9006021	10
8	WASHER, INT TOOTH LOCK #8	9006632	14
6	SCREW, PAN 7/16 PHL 8-32 x 3/16 LG	9006010-1	13
4	GUIDE, CARD & EXTRATER	1210699	12
2	MOUNT KEYS 6-32	9006021	11
4	SCREW, PAN 1/4 PHL 6-32 x 3/16 LG	9006021-1	10
1	PLATE, PRESSURE	CMD-709977	1
2	BRACKET, CABLE CLAMP	121471335	8
13	WASHER, #6 INT LOCK	9006633	7
4	SCREW, PHL PAN HD 6-32 x 1/8 LG	9006022-1	6
3	WASHER #8	9006021	5
5	SCREW, PHL PAN HD 6-32 x 1/8 LG	9006021-1	4
1	LOGIC CHASSIS ASSEMBLY	D-44-7012911	3
1	DC GRID ASSEMBLY WITH POWER SUPPLY	D-44-541224	2
7	LOGIC CHASSIS TUB	D-44-7012911-001	1

REV.	DATE	BY	CHKD	DESCRIPTION
1	10/15/72	W. SMITH		ISSUED FOR FABRICATION
2	11/14/72	W. SMITH		REVISED TO ADD PART 31
3	11/14/72	W. SMITH		REVISED TO ADD PART 30
4	11/14/72	W. SMITH		REVISED TO ADD PART 34
5	11/14/72	W. SMITH		REVISED TO ADD PART 3
6	11/14/72	W. SMITH		REVISED TO ADD PART 10
7	11/14/72	W. SMITH		REVISED TO ADD PART 11
8	11/14/72	W. SMITH		REVISED TO ADD PART 12
9	11/14/72	W. SMITH		REVISED TO ADD PART 13
10	11/14/72	W. SMITH		REVISED TO ADD PART 14
11	11/14/72	W. SMITH		REVISED TO ADD PART 15
12	11/14/72	W. SMITH		REVISED TO ADD PART 16
13	11/14/72	W. SMITH		REVISED TO ADD PART 17
14	11/14/72	W. SMITH		REVISED TO ADD PART 18
15	11/14/72	W. SMITH		REVISED TO ADD PART 19
16	11/14/72	W. SMITH		REVISED TO ADD PART 20
17	11/14/72	W. SMITH		REVISED TO ADD PART 21
18	11/14/72	W. SMITH		REVISED TO ADD PART 22
19	11/14/72	W. SMITH		REVISED TO ADD PART 23
20	11/14/72	W. SMITH		REVISED TO ADD PART 24
21	11/14/72	W. SMITH		REVISED TO ADD PART 25
22	11/14/72	W. SMITH		REVISED TO ADD PART 26
23	11/14/72	W. SMITH		REVISED TO ADD PART 27
24	11/14/72	W. SMITH		REVISED TO ADD PART 28
25	11/14/72	W. SMITH		REVISED TO ADD PART 29
26	11/14/72	W. SMITH		REVISED TO ADD PART 30
27	11/14/72	W. SMITH		REVISED TO ADD PART 31

ICL - FRANCIS
EQUIPMENT CORPORATION
LOGIC ASSEMBLY (TU16)
E-AD-700934-0-0
REV. 11/14/72
SCALE 1/2" = 1"

This drawing and specifications, herein, are the property of Digital Equipment Corporation and shall not be reproduced or copied or used in whole or in part as the basis for the manufacture or sale of items without written permission.

**COPYRIGHT © 1974,
DIGITAL EQUIP. CORP.**

REV. F
NUMBER
SIZE CODE
KWL TUI6-Ø-WL

REV.	CHANGE NO.	CHK	REVISIONS
A	TUI6-00010	RE	W. Boyles 5-5-75
			J. HESS
B	TUI6-00013	RE	J. R. 5-7-75
			B. Boyles 7-25-75
C	TUI6-00021	RE	J. HESS 7-10-75
			P. Brown 25 JUNE 76
D	TUI6-00022	RE	H. DRAB 6 Jul 76
			H. Drab 2 Aug 76
E	TUI6-00027	AK	H. DRAB 2 Aug 76
F	TUI6-00030	K.T.	B. Chipson 3 MAR. 77
			H. DRAB 3-9-77

FIRST USED ON OPTION MODEL	QTY.	DESCRIPTION	PART NO.	ITEM NO.
TUI6				
PARTS LIST				
DRN.	D. Schmidt	DATE	2/20/74	
CHK'D.	D. Schmidt	DATE	2/24/74	
ENG.	J. R. Hess	DATE	2-27-74	
PROJ. ENG.	J. R. Hess	DATE	2-27-74	
PROD.	L.A. Smith	DATE	5-31-74	
NEXT HIGHER ASSEMBLY				
D-AD-7009605-0-0				
SCALE	1/1		SIZE CODE	REV.
SHEET	1	OF	1	F

digital EQUIPMENT CORPORATION
MAYNARD, MASSACHUSETTS

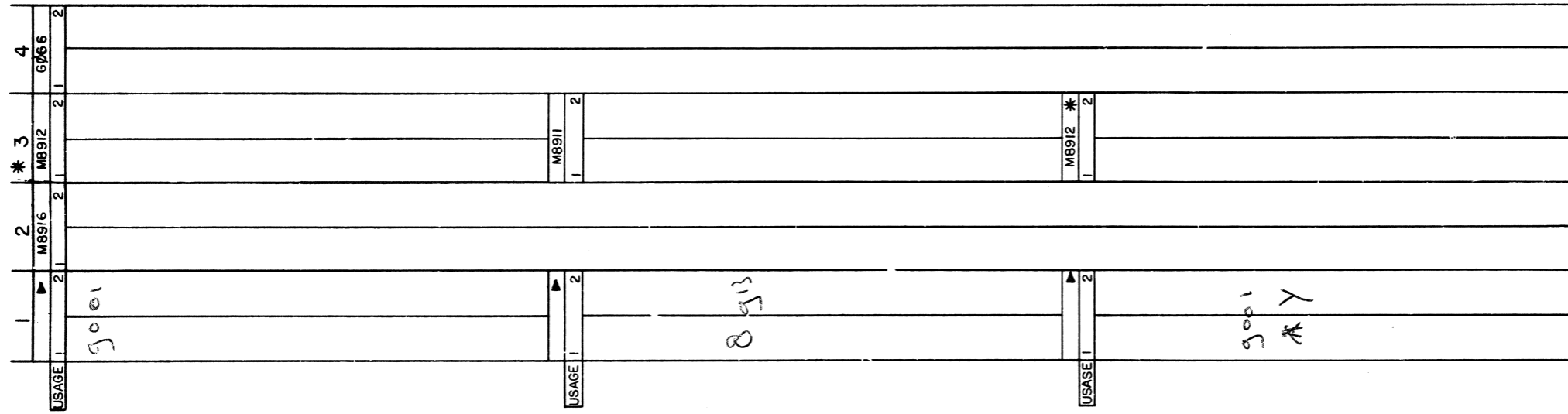
TITLE
**WIRE LIST
(TUI6)**

NUMBER
TUI6-Ø-WL

THIS DRAWING AND SPECIFICATIONS HEREIN ARE THE PROPERTY OF DIGITAL EQUIPMENT CORPORATION AND SHALL NOT BE REPRODUCED OR COPIED OR USED IN WHOLE OR IN PART AS THE BASIS FOR THE MANUFACTURE OR SALE OF ITEMS WITHOUT WRITTEN PERMISSION. COPYRIGHT © 1977, DIGITAL EQUIPMENT CORPORATION

REV. 2
D M U T E 16 - 0 - M U

- NOTES:**
- USE CABLE SLOTS AS FOLLOWS
- | | END-OF-BUS | MIDDLE-OF-BUS |
|-----|------------|---------------|
| A,B | M9001YB | M9001 |
| C,D | M8913YA | M8913 |
| E,F | M9001YC | M9001-YA |
- M8912 CAN BE USED AS A TEST FUNCTION GENERATOR IN SLOT 3 A/B. IT DRIVES SERIAL NO. AND DRIVE TYPE LINES IN SLOT 3 E/F. THE TU16 CAN NOT OPERATE ON-LINE WITH M8912 IN SLOT 3 A/B.
 - ELECTROSTATIC SHIELD IS POSITIONED BETWEEN THE G066 MODULE AND THE M8911/M8912 MODULES.

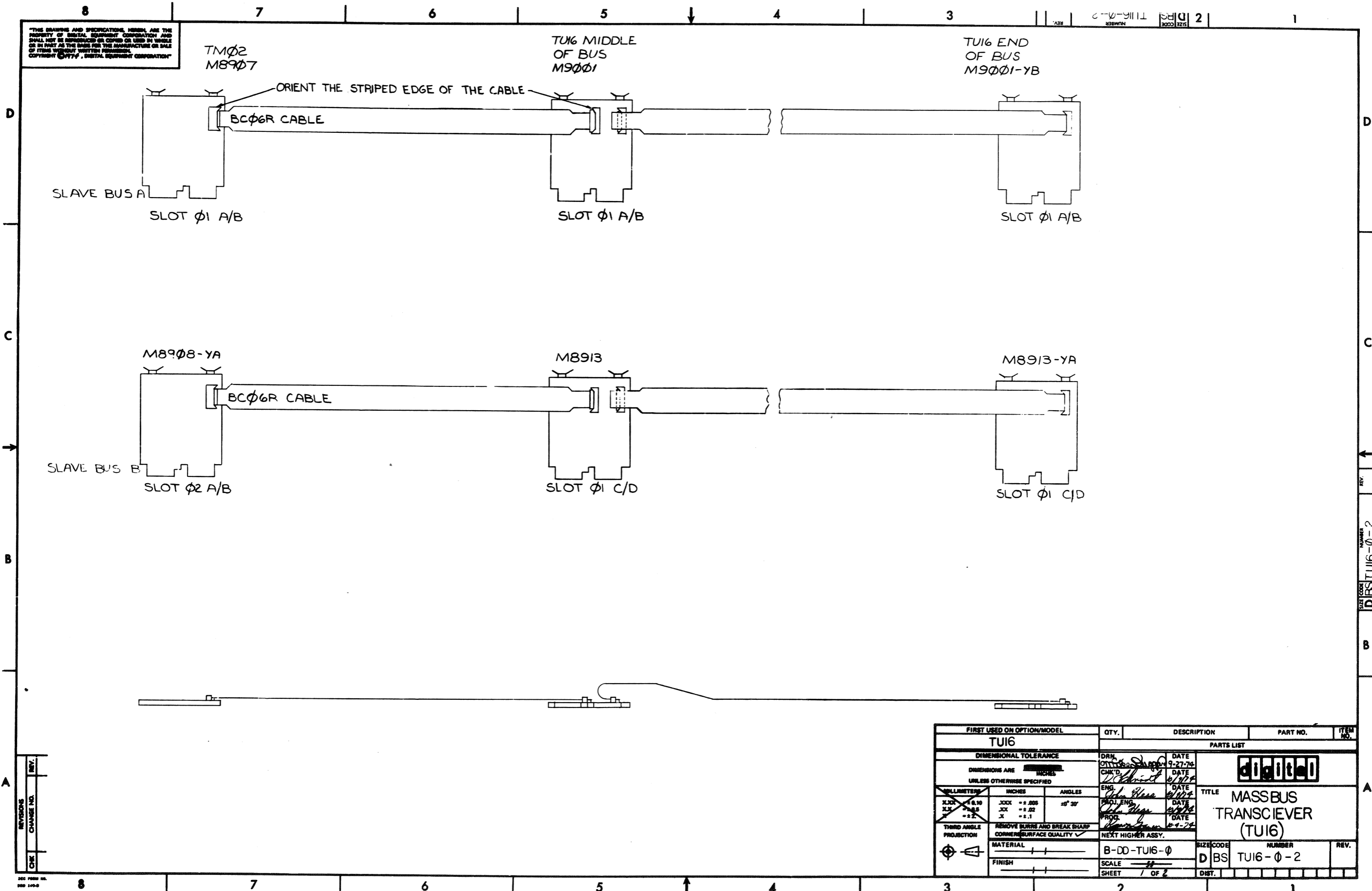


▲ SEE NOTE #1
* SEE NOTE #2

REV.	CHANGE NO.	REVISIONS

FIRST USED ON OPTION/MODEL TE16		QTY.	DESCRIPTION	PART NO.	ITEM NO.
PARTS LIST					
DIMENSIONAL TOLERANCE		DRN.	DATE		
DIMENSIONS ARE MILLIMETERS INCHES UNLESS OTHERWISE SPECIFIED		CHKD.	DATE		
MILLIMETERS	INCHES	ANGLES	DATE		
X,XX = ±0.10 X.X = ±0.5 X = ±2	XXX = ±.005 XX = ±.02 X = ±.1	45° 30°	DATE		
THIRD ANGLE PROJECTION	REMOVE BURRS AND BREAK SHARP CORNERS SURFACE QUALITY	ENG.	DATE	TITLE	
		PROJ. ENG.	DATE	MODULE UTILIZATION	
		PROD.	DATE	RC (S.D.) 1/2/77	
				NEXT HIGHER ASSY.	
MATERIAL				SIZE CODE	NUMBER
FINISH				D-JA-TE16-0-0	D M U T E 16 - 0 - M U
				SCALE	REV.
				SHEET	OF
				DIST.	

THE DRAWING AND SPECIFICATIONS HEREIN ARE THE PROPERTY OF DIGITAL EQUIPMENT CORPORATION AND SHALL NOT BE REPRODUCED OR COPIED OR USED IN WHOLE OR IN PART AS THE BASIS FOR THE MANUFACTURE OR SALE OF ITEMS WITHOUT WRITTEN PERMISSION.
 COPYRIGHT © 1977, DIGITAL EQUIPMENT CORPORATION



FIRST USED ON OPTION/MODEL		QTY.	DESCRIPTION	PART NO.	ITEM NO.
TU16					
DIMENSIONAL TOLERANCE		PARTS LIST			
DIMENSIONS ARE INCHES UNLESS OTHERWISE SPECIFIED		DRN	DATE		
		CHK'D	DATE		
		ENG.	DATE		
		PRD.	DATE		
MILLIMETER	INCHES	ANGLES	TITLE		
±.10	±.005	±0° 30'	MASSBUS		
±.05	±.02		TRANSCIEVER		
±.2	±.1		(TU16)		
THIRD ANGLE PROJECTION	REMOVE BURRS AND BREAK SHARP CORNERS SURFACE QUALITY	NEXT HIGHER ASSY.			
MATERIAL		B-DD-TU16-φ	SIZE CODE	NUMBER	REV.
FINISH			D BS	TU16-φ-2	
		SCALE	SHEET 1 OF 2		
			DIST.		

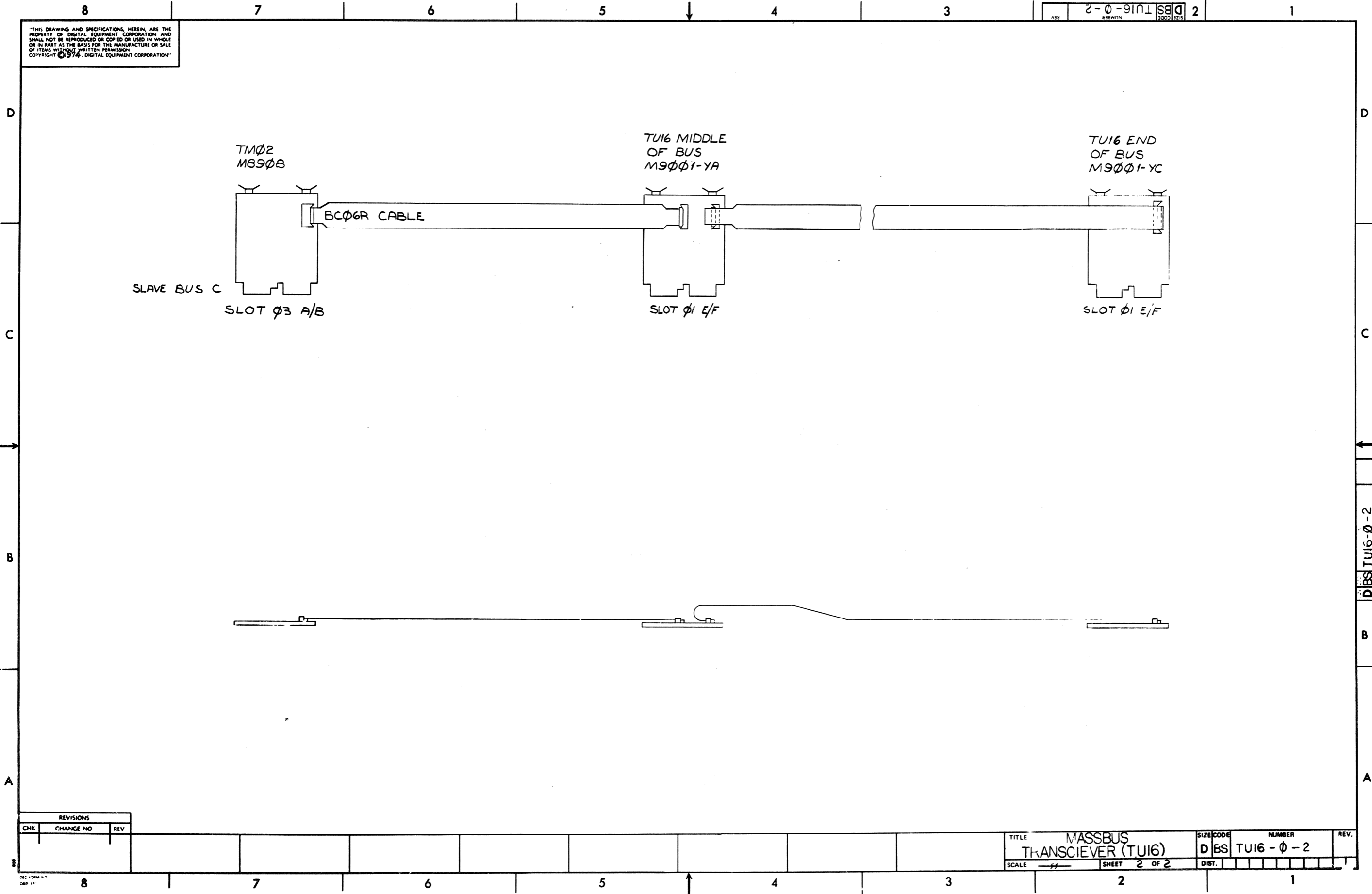
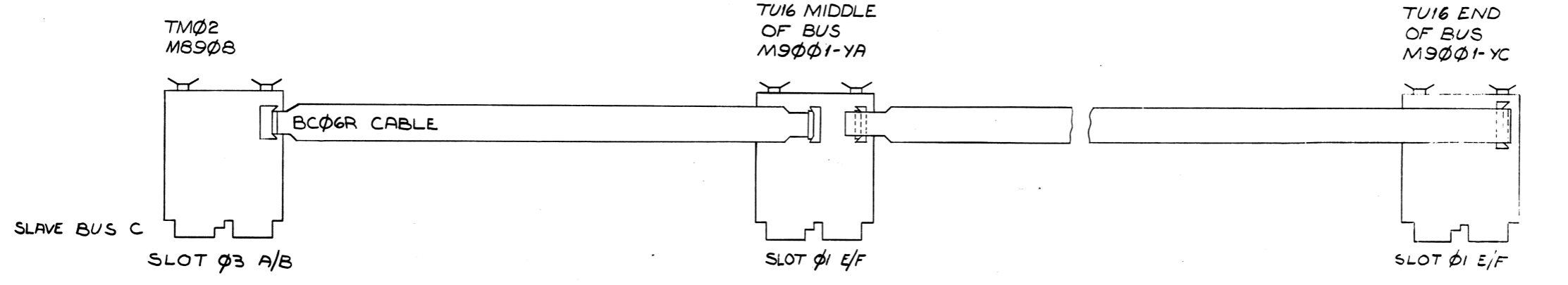
REV. NUMBER
 D BS TU16-φ-2

REVISES
 CHANGE NO.
 CHK

DEC 1980
 100-1000

"THIS DRAWING AND SPECIFICATIONS, HEREIN, ARE THE PROPERTY OF DIGITAL EQUIPMENT CORPORATION AND SHALL NOT BE REPRODUCED OR COPIED OR USED IN WHOLE OR IN PART AS THE BASIS FOR THE MANUFACTURE OR SALE OF ITEMS WITHOUT WRITTEN PERMISSION. COPYRIGHT © 1974, DIGITAL EQUIPMENT CORPORATION."

SIZE CODE NUMBER
DBS TUI6-0-2 2



REVISIONS		
CHK	CHANGE NO	REV

TITLE	MASSBUS TRANSCIEVER (TUI6)	SIZE CODE	DBS	NUMBER	TUI6-0-2	REV.	
SCALE		SHEET	2 OF 2	DIST.			

8 7 6 5 4 3 2 1

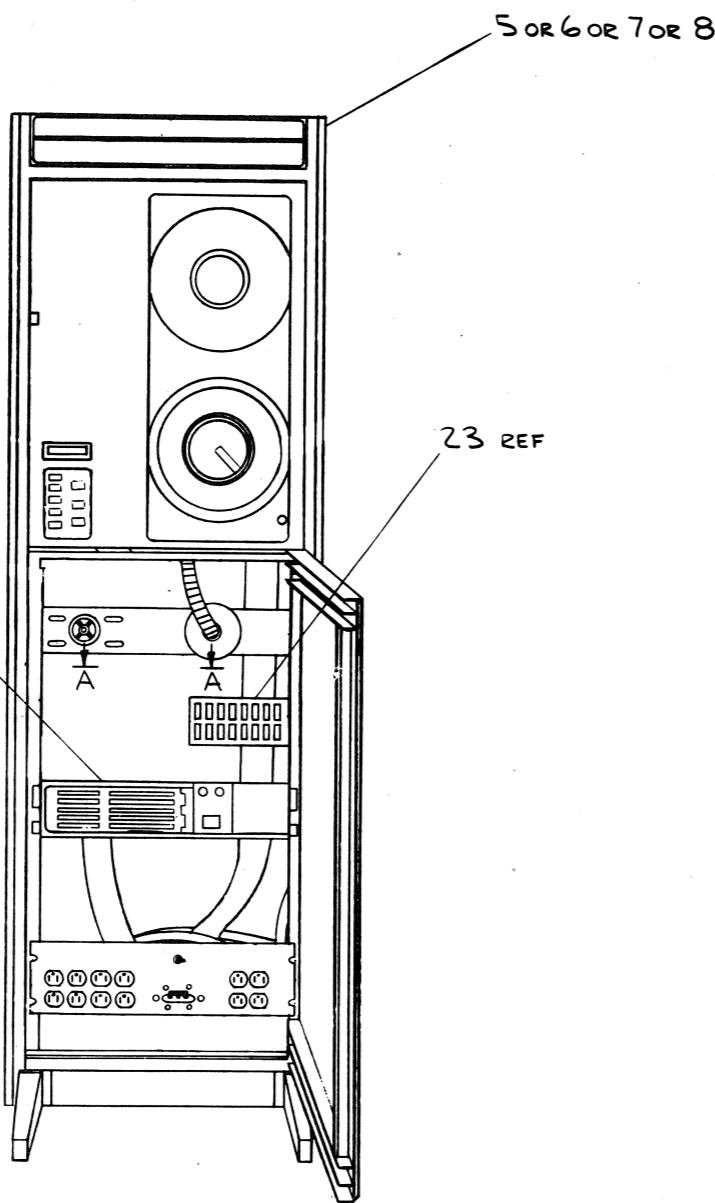
THE DRAWING AND SPECIFICATIONS HEREIN ARE THE PROPERTY OF DIGITAL EQUIPMENT CORPORATION AND SHALL NOT BE REPRODUCED OR COPIED OR USED IN WHOLE OR IN PART AS THE BASIS FOR THE MANUFACTURE OR SALE OF ITEMS WITHOUT WRITTEN PERMISSION. COPYRIGHT © 1977, DIGITAL EQUIPMENT CORPORATION

0-0-9131 M10 2

NUMBER	VARIATION		VOLTAGE
	DESCRIPTION		
TE16-EA	TE16-EE	TM02-FA	115V, 60HZ
TE16-EB	TE16-EF	TM02-FB	230V, 60HZ
TE16-EC	TE16-EH	TM02-FA	115V, 50HZ
TE16-ED	TE16-EJ	TM02-FB	230V, 50HZ
TE16-EK	TE16-EE	TM02-FC	115V, 60HZ
TE16-EL	TE16-EF	TM02-FD	230V, 60HZ
TE16-EM	TE16-EH	TM02-FC	115V, 50HZ
TE16-EN	TE16-EJ	TM02-FD	230V, 50HZ
TE16-AA	TE16-AE	TM02-FA	115V, 60HZ
TE16-AB	TE16-AF	TM02-FB	230V, 60HZ
TE16-AC	TE16-AH	TM02-FA	115V, 50HZ
TE16-AD	TE16-AJ	TM02-FB	230V, 50HZ

NOTES:

1. INFORMATION FOR CONNECTING THE CABLES TO THE TAPE TRANSPORT - REFER TO D-MU-TU16-0-MU.
2. USE BLACK TUBING (ITEM #20) TO COVER 36.00 GND STRAP. USE TWO TIE WRAPS (ITEM #19) TO SECURE TUBING TO STRAP.
3. GND STRAP, JUMPER FROM TM02 LOGIC BOX TO BE CONNECTED TO PWR SUPPLY TRANS-CAP ASSY.
4. FOR MTG INFO SEE SHT 4.



FRONT VIEW

REV.	CHANGE NO.	BY	DATE
1		H. DRAB	11/10/77

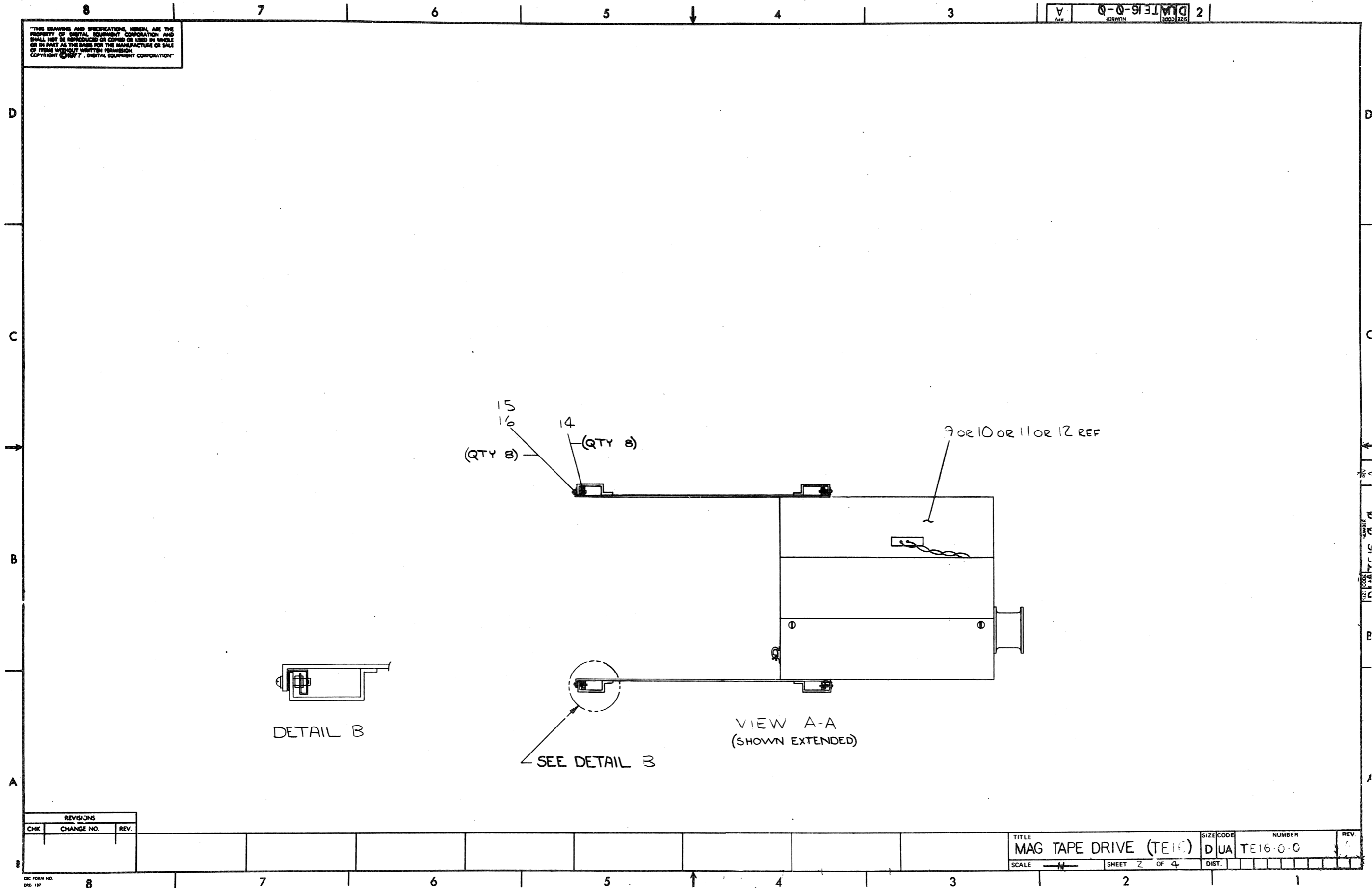
FORM NO. DC

OFF SHEET PARTS LIST REFER TO: PL-TE16-0-0

DESCRIPTION	DWG./PART NO.	ITEM NO.
UNLESS OTHERWISE SPECIFIED DIMENSIONS ARE IN INCHES		
ANGLES	CLASS OF ACCURACY	NOMINAL DIMENSION RANGE INCHES
10° 30'	(CHECK ONE)	OVER 0 TO .02
SURFACE QUALITY	MEDIUM	OVER .02 TO .12
IN	PREFERRED	OVER .12 TO .40
MICROINCHES		OVER .40 TO .80
		OVER .80 TO 4.0
		OVER 4.0 TO 80.0

THIRD ANGLE PROJECTION	DRN. [Signature]	FIRST USED ON	TE16
REMOVE BURRS AND BREAK SHARP CORNERS	CHK'D [Signature]	TITLE	MAG TAPE DRIVE (TE16)
DO NOT SCALE DWG	ENG. [Signature]	SIZE	D
	PRJ. ENG. [Signature]	CODE	UA
	PROD. [Signature]	NUMBER	TE16-0-0
MATERIAL	B-DD-TE16-0	REV.	
FINISH		SHEET	1 OF 1

"THIS DRAWING AND SPECIFICATIONS HEREIN ARE THE PROPERTY OF DIGITAL EQUIPMENT CORPORATION AND SHALL NOT BE REPRODUCED OR COPIED OR USED IN WHOLE OR IN PART AS THE BASIS FOR THE MANUFACTURE OR SALE OF ITEMS WITHOUT WRITTEN PERMISSION. COPYRIGHT © 1977, DIGITAL EQUIPMENT CORPORATION"

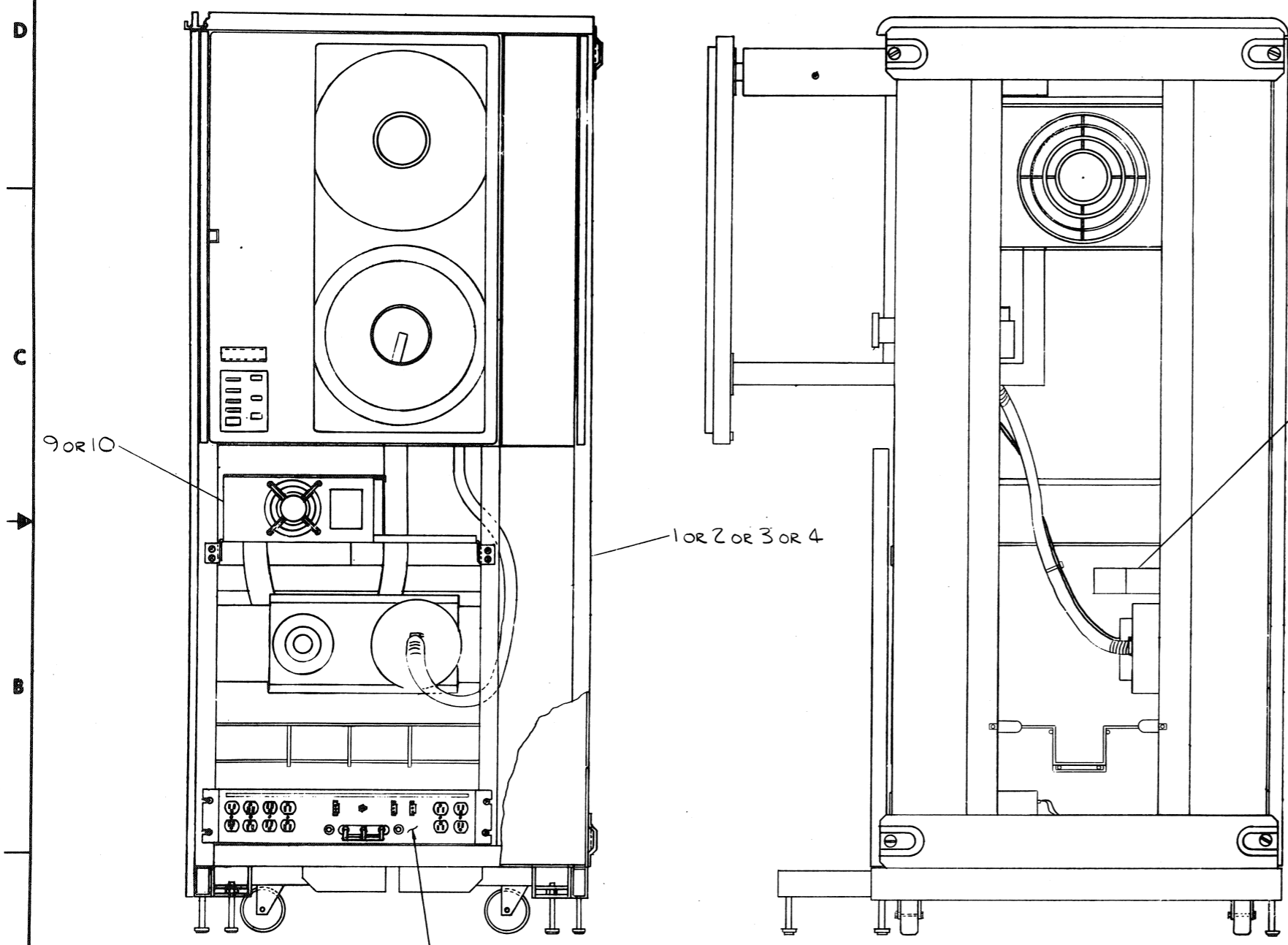


REVISIONS		
CHK	CHANGE NO.	REV.

TITLE	SIZE CODE	NUMBER	REV.
MAG TAPE DRIVE (TE16)	DUA	TE16-0-C	1
SCALE	SHEET 2 OF 4	DIST.	

NOTES:
 1. FOR INFORMATION ON SLAVE UNITS TE16-AE, TE16-AF, TE16-AH & TE16-AJ SEE D-UA-TE16-A-0 AND C-PL-TE16-A-0.

"THIS DRAWING AND SPECIFICATIONS, HEREIN, ARE THE PROPERTY OF DIGITAL EQUIPMENT CORPORATION AND SHALL NOT BE REPRODUCED OR COPIED OR USED IN WHOLE OR IN PART AS THE BASIS FOR THE MANUFACTURE OR SALE OF ITEMS WITHOUT WRITTEN PERMISSION. COPYRIGHT © 1977, DIGITAL EQUIPMENT CORPORATION"



LOCATION OF TINNEMAN NUTS (ITEM #14)

LOCATE ALL NUTS BY COUNTING HOLES UP FROM BOTTOM OF CABINET UPRIGHT

FRONT HOLE NUMBERS		REAR HOLE NUMBERS	
RIGHT SIDE:	31, 32*	RIGHT SIDE:	25*
			28, 31, 32*
LEFT SIDE:	31, 32*	LEFT SIDE:	25*
			28, 31, 32*

* USED WHEN INSTALLING TM02 AND H740-DA (REF ONLY)

CAUTION
 THIS SHEET IS FOR THE TE16 IN THE H9500 SERIES CAB

DES. FROM NO. DWD 100-C
 8
 7
 6
 5
 4
 3
 2
 1

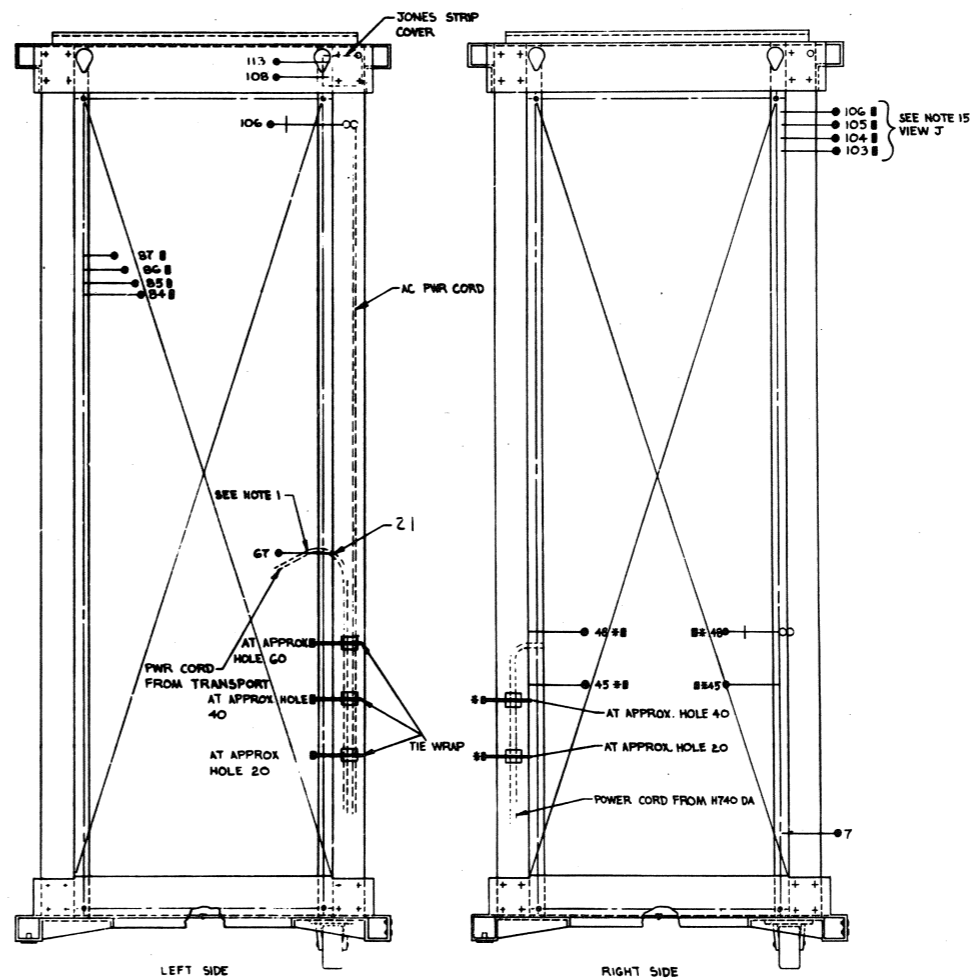
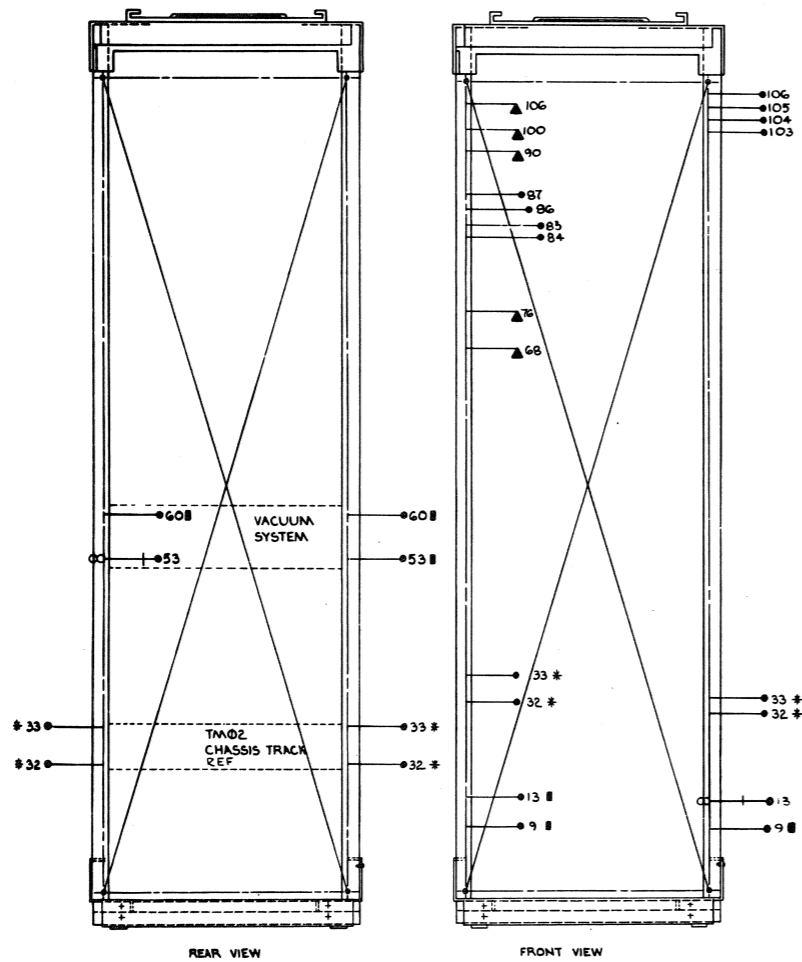
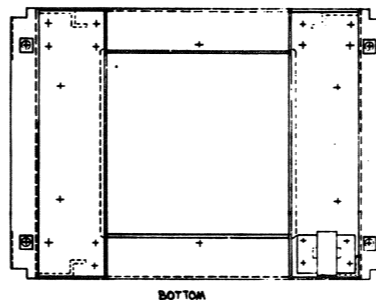
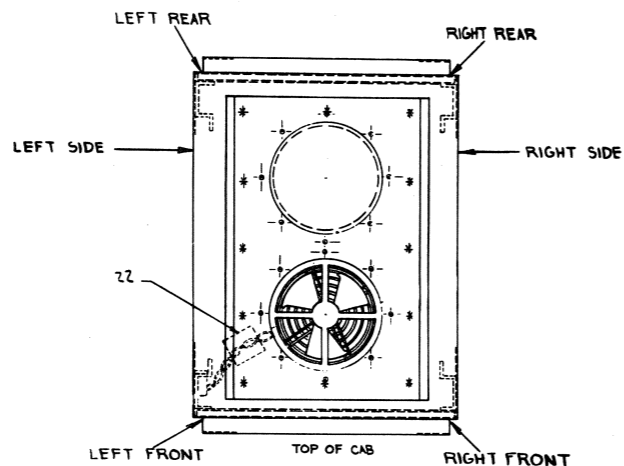
DESCRIPTION	DWG./PART NO.	ITEM NO.
UNLESS OTHERWISE SPECIFIED DIMENSIONS ARE IN INCHES		
ANGLES 45° 90°	CLASS OF ACCURACY (CHECK ONE)	NOMINAL DIMENSION RANGE INCHES
SURFACE QUALITY IN	MEDIUM	OVER 0 TO 0.25 0.25 TO 1.25 1.25 TO 4.0 4.0 TO 12.0 12.0 TO 40.0 40.0 TO 80.0
QUANTITY & VARIATION	MICRONCHES	PREFERRED
THIRD ANGLE PROJECTION	DRN. [Signature]	FIRST USED ON
REMOVE BURRS AND BREAK SHARP CORNERS	CHK'D [Signature]	TE16
DO NOT SCALE DWG	PROJ. ENG. [Signature]	TITLE
MATERIAL	PROD. [Signature]	MAG TAPE DRIVE (TE16)
FINISH	NEXT HIGHER ASSY.	SIZE CODE
	S-00-TE16-0	D UA
	SCALE NONE	NUMBER
	SHEET 3 OF 4	D UA TE16-0-0
		REV. A

HARDWARE AID PRINT

THIS DRAWING AND SPECIFICATIONS HEREIN ARE THE PROPERTY OF DIGITAL EQUIPMENT CORPORATION AND SHALL NOT BE REPRODUCED OR COPIED OR USED IN WHOLE OR IN PART AS THE BASIS FOR THE MANUFACTURE OR SALE OF ITEMS WITHOUT WRITTEN PERMISSION. COPYRIGHT © 1977, DIGITAL EQUIPMENT CORPORATION.

NOTES:

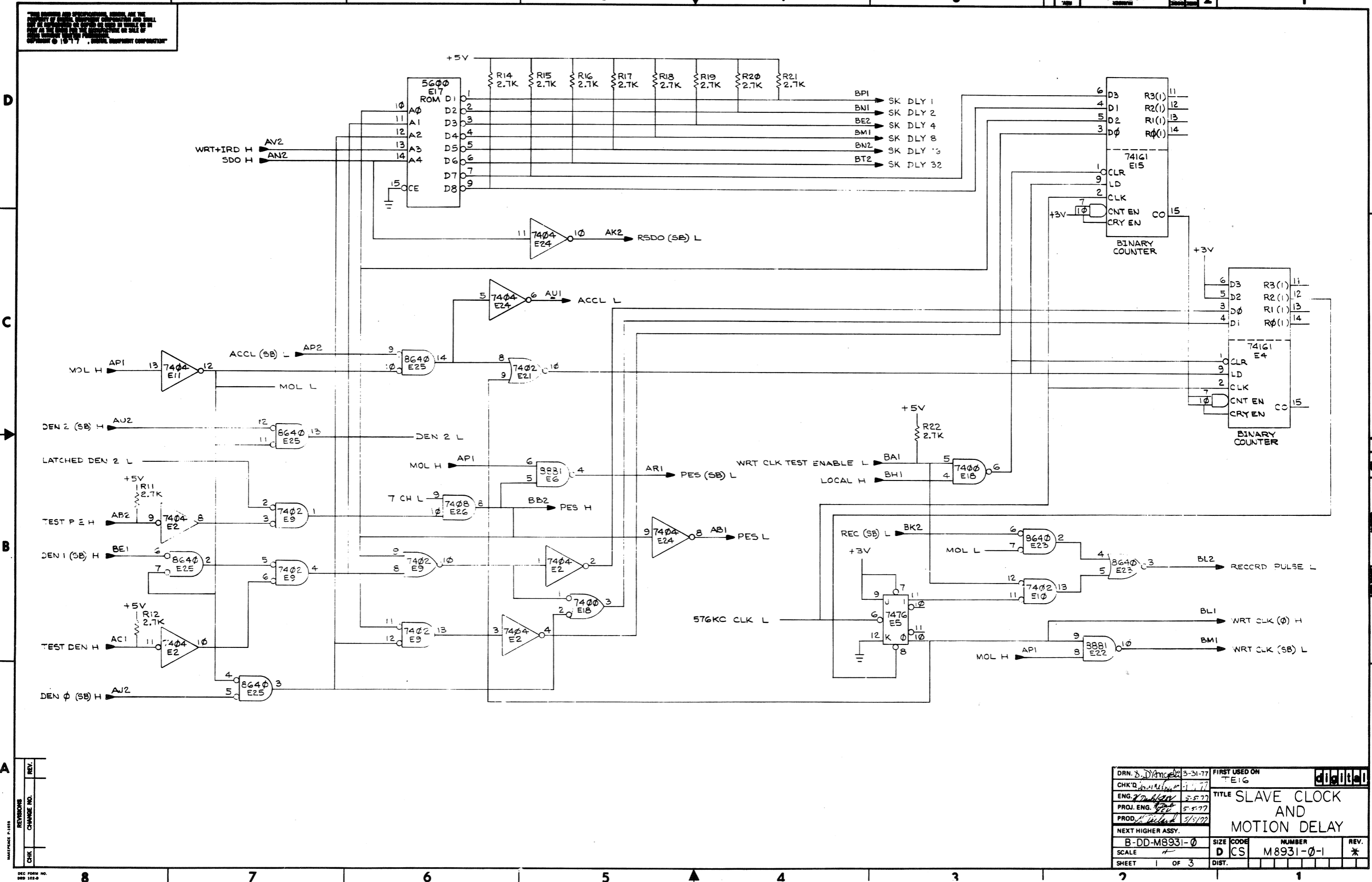
1. USE .375 CLAMP (ITEM #21) FOR POWER CORD. FROM TRANSPORT USE FLAT WASHER.
 2. USE .625 CLAMP FOR BGI POWER CORD, USE FLAT WASHER.
- THIS SIGN INDICATES WHERE TINNEMAN CLIP SHOULD BE COUNTING FROM BOTTOM OF CAB
- +— INDICATES USE OF SCREW & KEP-NUT FOR GROUNDING PURPOSES
- ▲— INDICATES CABLE TIE MOUNT 9078GT FOR TIE WRAP.
- * THIS SIGN INDICATES USED ONLY WHEN INSTALLING A TM02
- USE FLAT WASHER #10
- ∞ USE KEP-NUT #10 32



REVISIONS		
CHK	CHANGE NO	REV.

TITLE	SIZE CODE	NUMBER	REV.
MAG TAPE DRIVE (TE16)	DUA	TE16-0-0	
SCALE	SHEET	DIST.	
	4 OF 4		

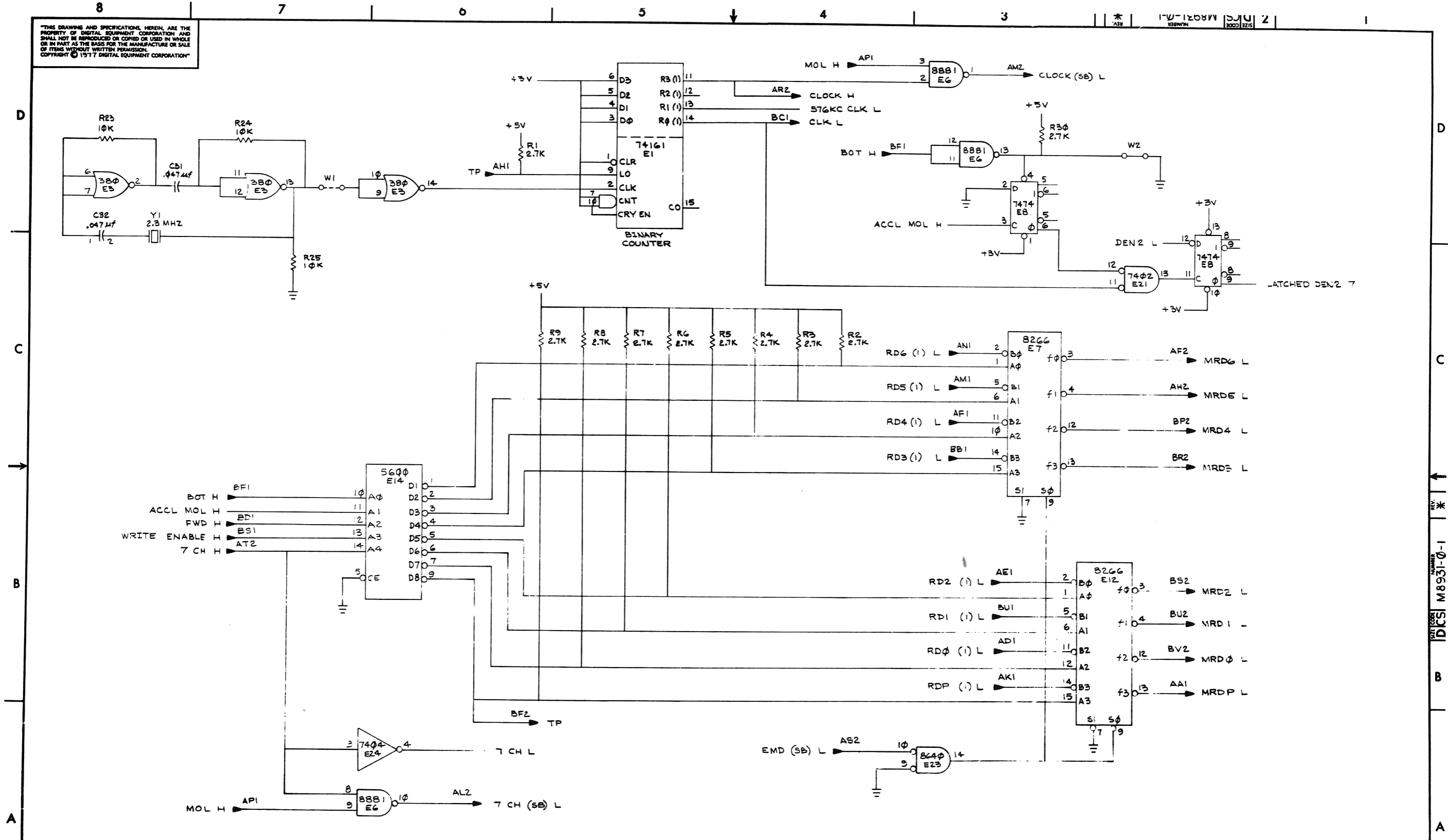
THIS DRAWING AND SPECIFICATIONS HEREBY ARE THE PROPERTY OF DIGITAL EQUIPMENT CORPORATION AND SHALL NOT BE REPRODUCED OR COPIED IN WHOLE OR IN PART WITHOUT THE WRITTEN PERMISSION OF DIGITAL EQUIPMENT CORPORATION.



REV.	
REVISIONS	
CHANGE NO.	
CHK	

DRN. <i>S. D'Amico</i>	3-31-77	FIRST USED ON	TEIG
CHK'D <i>W. Miller</i>	4-1-77	TITLE	SLAVE CLOCK AND MOTION DELAY
ENG. <i>W. Miller</i>	5-5-77	SCALE	D CS
PROJ. ENG. <i>W. Miller</i>	5-5-77	NUMBER	M8931-0-1
PROD. <i>W. Miller</i>	5/5/77	REV.	*
NEXT HIGHER ASSY.		SHEET	1 OF 3
B-DD-M8931-0		DIST.	

"THIS DRAWING AND SPECIFICATIONS, HEREIN, ARE THE PROPERTY OF DIGITAL EQUIPMENT CORPORATION AND SHALL NOT BE REPRODUCED OR COPIED OR USED IN WHOLE OR IN PART AS THE BASIS FOR THE MANUFACTURE OR SALE OF ITEMS WITHOUT WRITTEN PERMISSION. COPYRIGHT © 1977 DIGITAL EQUIPMENT CORPORATION"

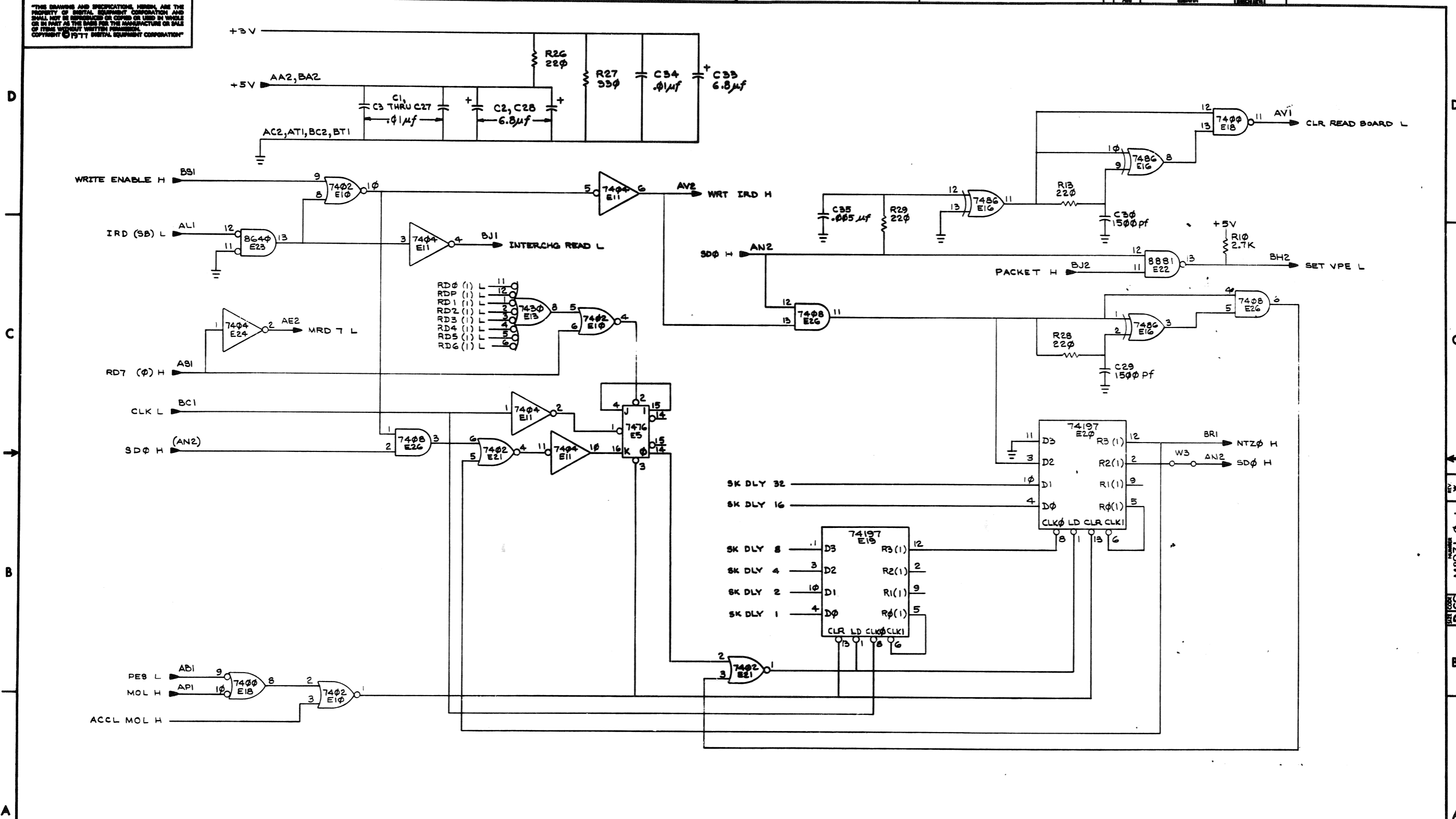


REVISIONS		
CHK	CHANGE NO.	REV.

TITLE SLAVE CLOCK AND MOTION DELAY
 SCALE SHEET 2 OF 3
 SIZE CODE DCS
 NUMBER M8931-0-1
 REV. *

REV. * M8931-0-1

THIS DRAWING AND SPECIFICATIONS HEREIN ARE THE PROPERTY OF DIGITAL EQUIPMENT CORPORATION AND SHALL NOT BE REPRODUCED OR COPIED OR USED IN WHOLE OR IN PART AS THE BASIS FOR THE MANUFACTURE OR SALE OF ITEMS WITHOUT WRITTEN PERMISSION OF DIGITAL EQUIPMENT CORPORATION.



REVISIONS		
CHK	CHANGE NO.	REV.