

LINE	ITEM	DOCUMENT NUMBER	PART NUMBER	DESCRIPTION	QTY	REFERENCE DESIGNATOR
1	1		5013309-00	ETCH BOARD FOR M8256	1	
2	2		1000009-00	33.0 MMF 100V 5%200PPM DM158	1	C85
3	3		1000011-00	47.0 MMF 100V 5%200PPM DM158	2	C4,C5
4	4		1000016-00	100.0 MMF 100V 5%200PPM DM158	1	C7
5	5		1000018-00	120.0 MMF 100V 5%200PPM DM158	2	C1,C3
6	6		1000042-00	1000.0 MMF 100V 5%200PPM DM158	1	C6
7	7		1001610-00	.01 MFD 50V -20+80 Z5U AXIAL	73	C2,C13-C84
8	8		1005306-00	6.8MFD 35V 10% S.TANT	4	C8-C11
9	9		1209038-00	SOCKET 16PIN	1	E24
10	10		1209941-02	HEADER 100 40POS RT ANGLE	1	J1
11	11		1209941-03	HEADER RT ANGLE LEFT L	1	
12	12		1209941-04	HEADER RT ANGLE,RIGHT	1	
13	13		1211164-03	SW,DIP 1P 1A 7POS	1	E13
14	14		1211164-06	SW,DIP 1P 1A 10POS	1	E74
15	15		1300247-00	120 1/4W 5% CC	1	R40
16	16		1300309-00	390 1/4W 5% CC	8	R13,R29-R33,R37,R46
17	17		1300479-00	10 K 1/4W 5% CC	1	R35
18	18		1314119-00	44.2 K 1/4W 1% RN55D-F 100PPM	1	R23
19	19		1301322-00	180 1/4W 5% CC	11	R12,R18,R20,R24-R28,R36,R38,R45
20	20		1300365-00	1 K 1/4W 5% CC	4	R39,R41-R43
21	21		1302389-00	4.3 K 1/4W 5% CC	13	R1-R11,R19,R21
22	22		1305324-00	4.99 K 1/4W 1% RN55D-F 100PPM	5	R14,R16,R17,R22,R44
23	23		1905547-00	7474 FF-D DUAL,EDGE TRIGG	1	E64
24	24		1909004-00	DEC 7402 NOR GATE-QUAD 2IN	1	E56
25	25		1909686-00	7404 INVERTER GATE-HEX 1I	1	E15
26	26		1909705-00	DEC 8881 NAND GATE-QUAD 2IN O	4	E11,E19,E25,E72
27	27		1909712-00	DEC 8242 COMPARATOR-4BIT N,	3	E62,E68,E73
28	28		1910652-00	74174 FF-D HEX	2	E22,E37
29	29		1910842-00	74199 SHIFT REG.,8BIT PARR	2	E5,E20
30	30		1911469-00	DEC 8640 RECEIVFR,BUS,QUAD,U	2	E10,E12

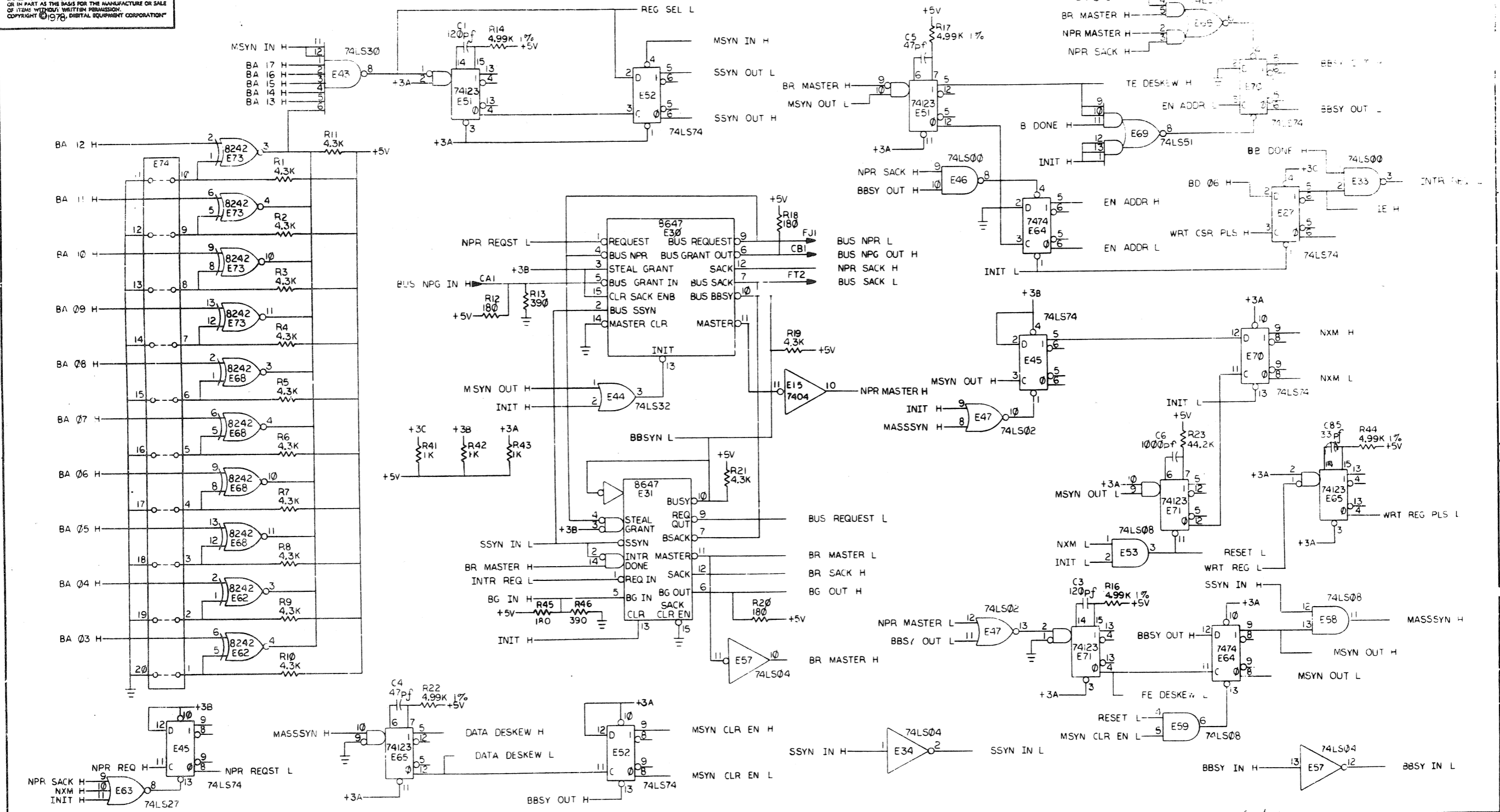
REVISION HISTORY		SECTION 1 OF 1	RESP.ENG.: J.GLAVIN	DATE: 11-APR-78	D I G I T A L
ENG:	ECO NUMBER	REV	MADE BY: J.ROGERS	DATE: 17-FEB-78	TITLE PARTS LIST
	INIT	A			
	J.G.M8256-ML001	B			RX211 UNIBUS INTERFACE
		1.00	CHECKED: S.TUTTLE	DATE: 11-APR-78	
		2.			
		3.	DSN.ENG.: J.RYAN	DATE: 11-APR-78	
		4.			
		5.			
		6.			
		7.			
		8.	PROD.: J.MONCHELLI	DATE: 11-APR-78	SIZE:CODE: DOCUMENT NUMBER: REV
		9.			K PL M8256-0-DBP B
		10.			
		11.	ASSEMBLY NUMBER: D-11A-M8256-0-0		PART NUMBER: M8256 EDIT #
		12.			18

"THIS DRAWING AND SPECIFICATIONS HEREIN, ARE THE PROPERTY OF DIGITAL EQUIPMENT CORPORATION AND SHALL NOT BE REPRODUCED OR COPIED OR USED IN WHOLE OR IN PART AS THE BASIS FOR THE MANUFACTURE OR SALE OF ITEMS WITHOUT WRITTEN PERMISSION. COPYRIGHT 1978, DIGITAL EQUIPMENT CORPORATION"

LINE	ITEM	DOCUMENT NUMBER	PART NUMBER	DESCRIPTION	QTY	REFERENCE DESIGNATOR
31	31		1911521-00	7432 OR GATE-QUAD 2IN. PO	1	E17
32	32		1911579-00	8641 TRANSCIVER,BUS,QUA	10	E1,E2,E4,E7,E42,E48,E54,E60,E66,E67
33	33		1912083-00	DEC 8647 UNIBUS INTERRUPT CON	2	E30,E31
34	34		1912799-00	L800 NAND-GATE-QUAD 2IN,P	2	E33,E46
35	35		1912801-00	L802 NOR-GATE-QUAD 2IN	4	E23,E35,E47,E50
36	36		1912803-00	L804 INVERTER GATE-HEX 1I	2	E34,E57
37	37		1912805-00	L808 AND GATE-QUAD 2IN,PO	4	E40,E53,E58,E59
38	38		1910436-00	DEC 74123 ONE SHOT-DUAL,RETRIG	4	E38,E51,E65,E71
39	39		1912807-00	L810 NAND GATE-TRIPLE 3IN	1	E39
40	40		1912813-00	L827 NOR GATE-TRIPLE 3IN	1	E63
41	41		1912815-00	L830 NAND GATE-SINGLE 8IN	1	E43
42	42		1912816-00	L832 OR GATE-QUAD 2IN,POS	3	E10,E41,E44
43	43		1912820-00	L851 A-O-I GATE 2-WIDE 2I	1	E69
44	44		1912821-00	L854 A-O-I GATE,3-2-2-3IN	1	E9
45	45		1912824-00	L874 FF-D DUAL,EDGE TRIGG	6	E27-E29,E45,E52,E70
46	46		1912845-00	L8153 MUX 1 OF 4 (DUAL)	1	E36
47	47		1912847-00	L8157 MUX 1 OF 2 (QUAD)	2	E8,E14
48	48		1912849-00	L8161 COUNTER,SYNCHR,4BIT	1	E16
49	49		1912854-00	L8193 COUNTER,SYNCHR,4BIT,	5	E26,E32,E49,E55,E61
50	50		2303981-00	B1-81	1	E21
51	51		9006732-00	EYELET, ROLLED FLANGE, .121 OD X	8	
52	52		9008337-06	HANDLE, FLIP CHIP, MAGENTA	4	
53	53		1301425-00	300 1/4W 50 CC	1	R34
54	54		9105740-00	WIRE(WRAP)30AWG UL1423	A/R	
55	55		9107560-01	WIRE,BUSS,22AWG	A/R	
56	56		9107256-11	TUBING,THIN WALL,.027ID UL	A/R	

D	I	G	I	T	A	L	TITLE	SECTION	1	OF	1	SIZE	CODE	DOCUMENT NUMBER	REV
							RX211 UNIBUS INTERFACE							M8256-0-DBP	B

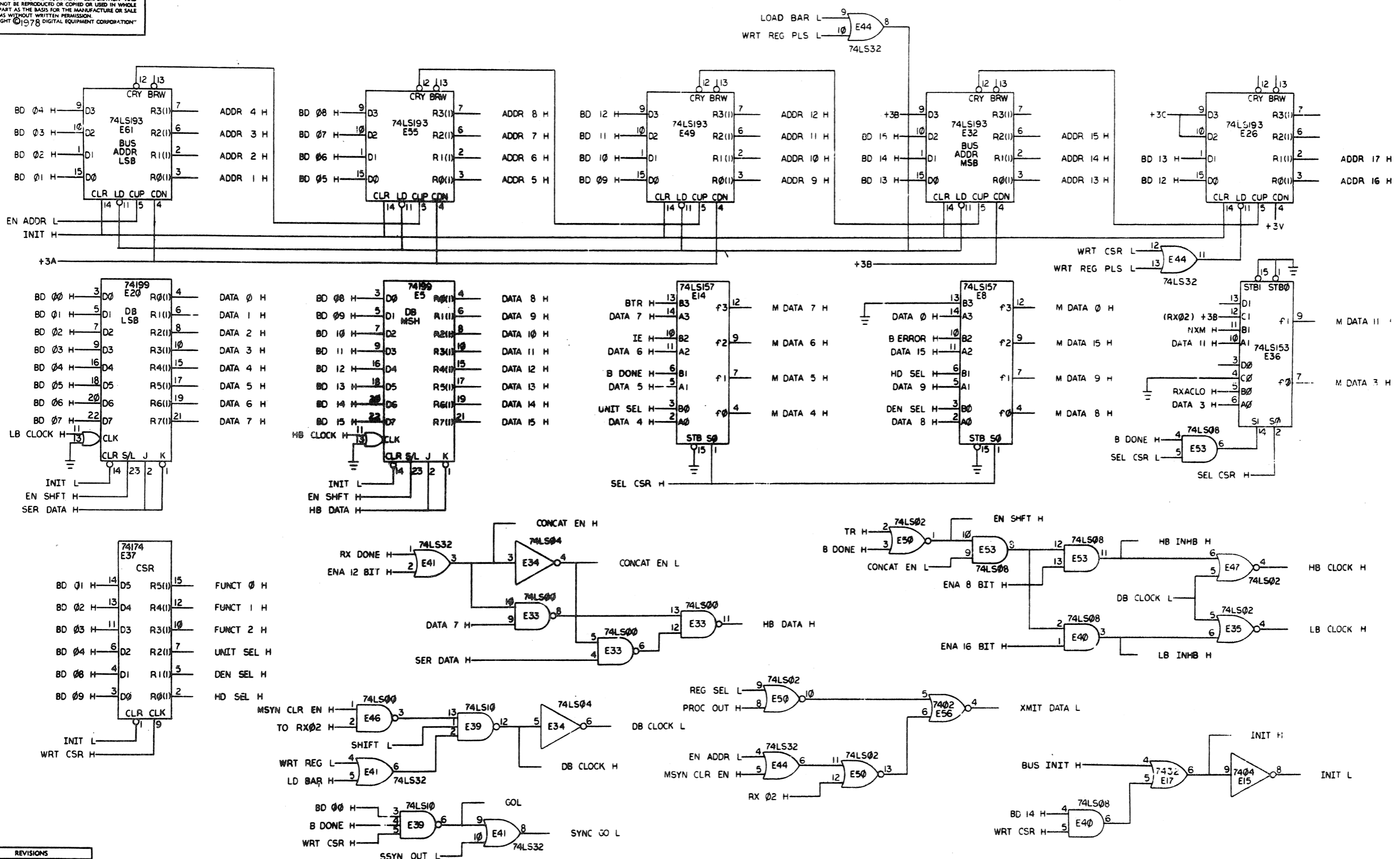
THIS DRAWING AND SPECIFICATIONS HEREIN ARE THE PROPERTY OF DIGITAL EQUIPMENT CORPORATION AND SHALL NOT BE REPRODUCED OR COPIED OR USED IN WHOLE OR IN PART AS THE BASIS FOR THE MANUFACTURE OR SALE OF ITEMS WITHOUT WRITTEN PERMISSION. COPYRIGHT © 1978, DIGITAL EQUIPMENT CORPORATION



REV.	B
CHG. NO.	18256-M-201
DATE	27-SEP-78
DESIGNER	J. GLAVIN
CHECKED	

DRN	1/4/78	FIRST USED ON	RX02
CHK'D		DATE	5-10-78
ENG.		DATE	5-10-78
PROJ. ENG.		DATE	5-10-78
PROD.		DATE	5-10-78
NEXT HIGHER ASSY.		TITLE	RX211
8-00-M8256-0	SIZE	CODE	NUMBER
SCALE	D	CS	M8256-0-1
SHEET	1	OF 4	REV.
			B

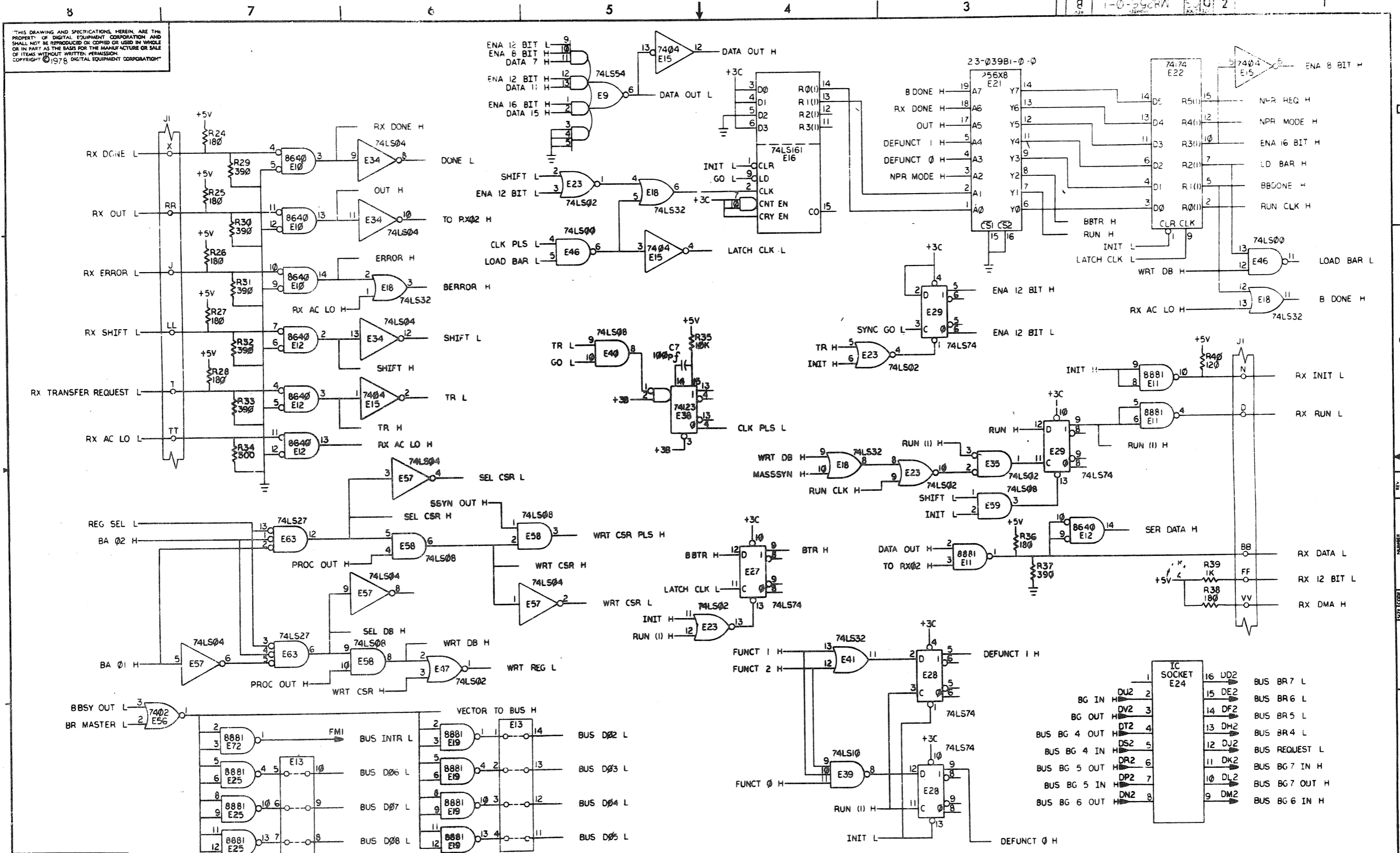
"THIS DRAWING AND SPECIFICATIONS HEREIN ARE THE PROPERTY OF DIGITAL EQUIPMENT CORPORATION AND SHALL NOT BE REPRODUCED OR COPIED OR USED IN WHOLE OR IN PART AS THE BASIS FOR THE MANUFACTURE OR SALE OF ITEMS WITHOUT WRITTEN PERMISSION. COPYRIGHT © 1978 DIGITAL EQUIPMENT CORPORATION"



REVISIONS		
CHK	CHANGE NO.	REV.

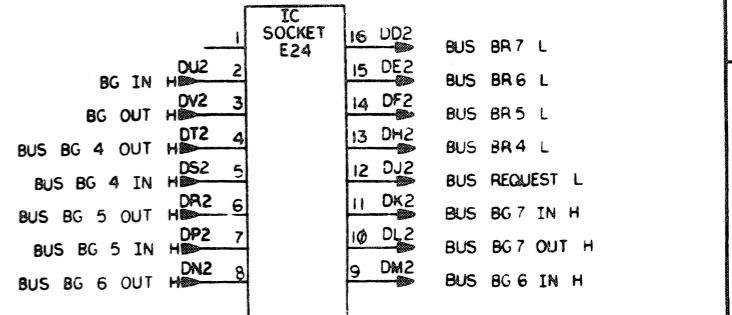
TITLE	RX211 UNIBUS INTERFACE	SIZE CODE	D CS	NUMBER	M8256-0-1	REV.	B
SCALE	1/1	SHEET	2 OF 4	DIST.			

THIS DRAWING AND SPECIFICATIONS HEREIN ARE THE PROPERTY OF DIGITAL EQUIPMENT CORPORATION AND SHALL NOT BE REPRODUCED OR COPIED OR USED IN WHOLE OR IN PART AS THE BASIS FOR THE MANUFACTURE OR SALE OF ITEMS WITHOUT WRITTEN PERMISSION. COPYRIGHT © 1978 DIGITAL EQUIPMENT CORPORATION.

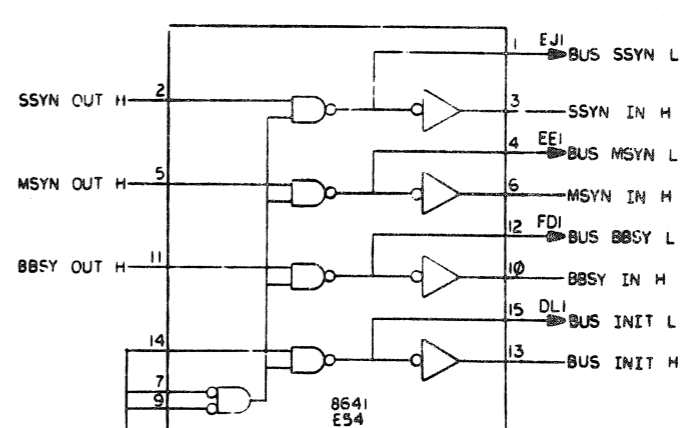
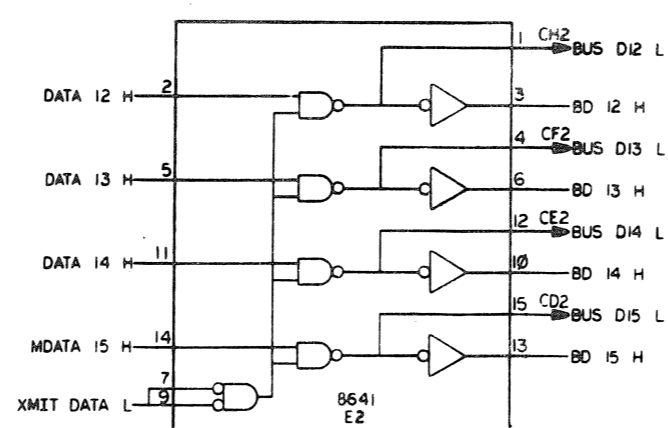
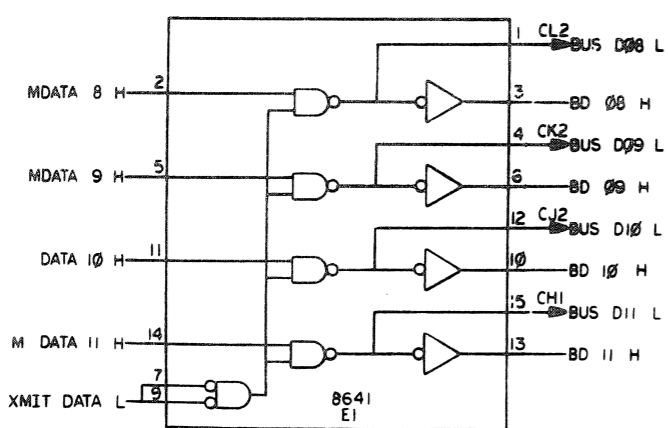
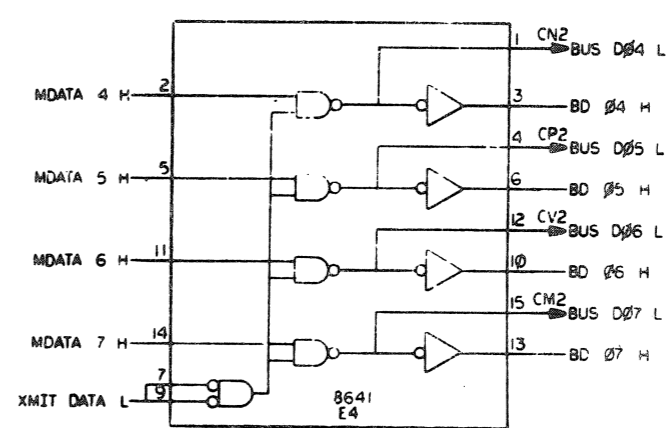
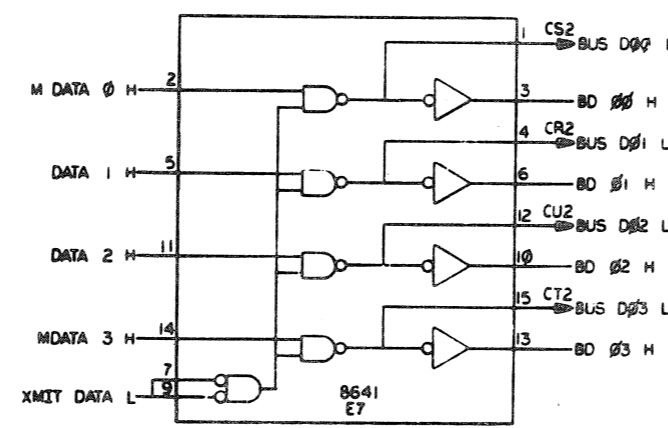
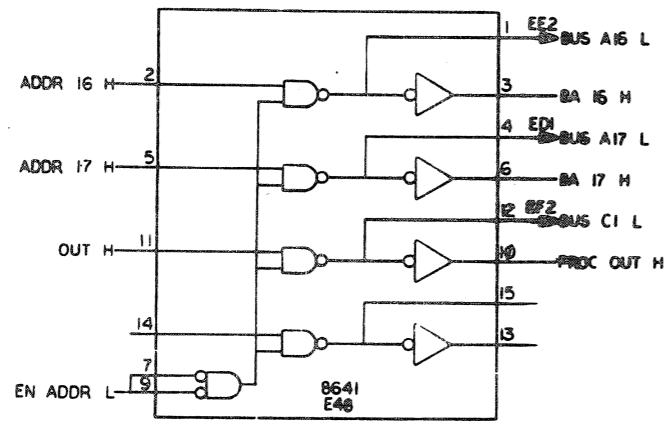
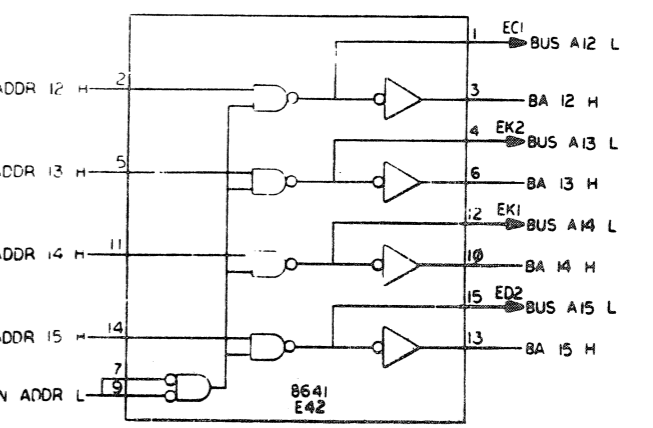
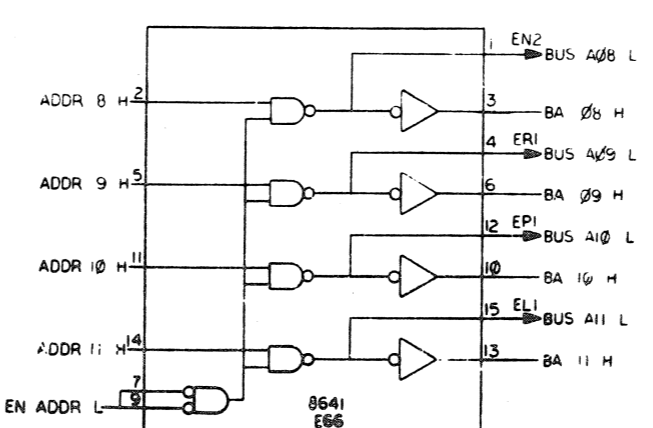
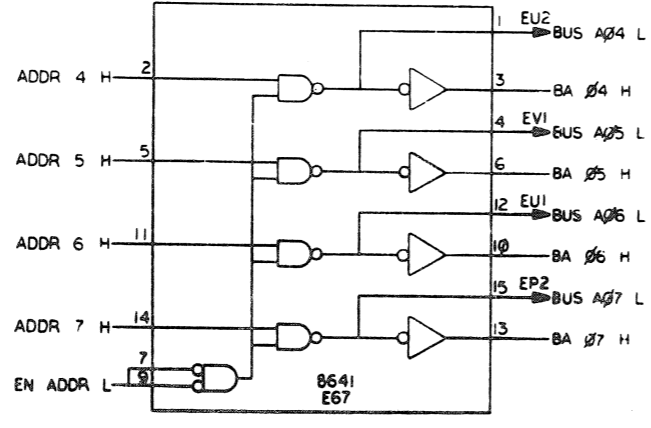
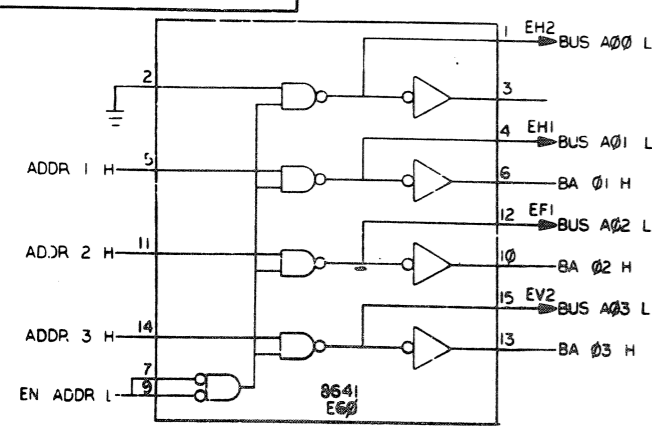


REVISIONS		
CHK	CHANGE NO.	REV.

TITLE	RX211 UNIBUS INTERFACE	SIZE CODE	D CS	NUMBER	M8256-0-1	REV.	B
SCALE		SHEET	3 OF 4	DIST.			



"THIS DRAWING AND SPECIFICATIONS HEREIN ARE THE PROPERTY OF DIGITAL EQUIPMENT CORPORATION AND SHALL NOT BE REPRODUCED OR COPIED OR USED IN WHOLE OR IN PART AS THE BASIS FOR THE MANUFACTURE OR SALE OF ITEMS WITHOUT WRITTEN PERMISSION. COPYRIGHT © 1978 DIGITAL EQUIPMENT CORPORATION"



REVISIONS		
CHK	CHANGE NO.	REV.

