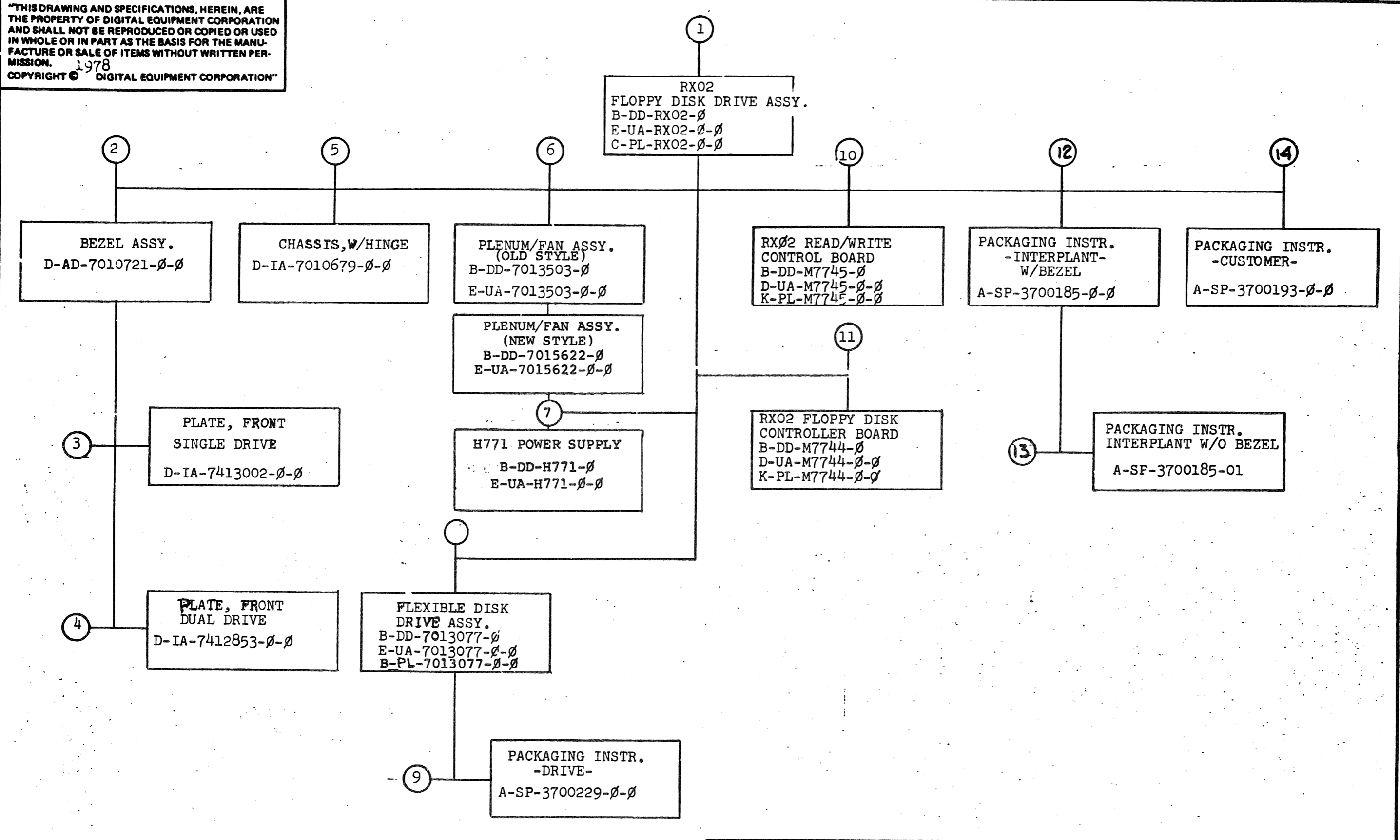


"THIS DRAWING AND SPECIFICATIONS, HEREIN, ARE THE PROPERTY OF DIGITAL EQUIPMENT CORPORATION AND SHALL NOT BE REPRODUCED OR COPIED OR USED IN WHOLE OR IN PART AS THE BASIS FOR THE MANUFACTURE OR SALE OF ITEMS WITHOUT WRITTEN PERMISSION. 1978
 COPYRIGHT © DIGITAL EQUIPMENT CORPORATION"



TITLE	RX02 FLOPPY DISK DRIVE	SHEET 2 OF 3	SIZE CODE	B DD	NUMBER	RX02-0	REV	C
-------	------------------------	--------------	-----------	------	--------	--------	-----	---

FIND NO.	DRAWING NO.	DESCRIPTION	TYPE	FIND NO.	DRAWING NO.	DESCRIPTION	TYPE
1	MP-00629	FIELD MAINTENANCE PRINT SET (MP)	-	7	B-DD-H771-Ø	H771 POWER SUPPLY - DRAWING DIRECTORY	-
	B-TC-RX02-0-1	FIELD MAINTENANCE PRINT SET (TC)	-		E-UA-H771-Ø-Ø	H771 POWER SUPPLY ASSY.	E/M
	B-DD-RX02-0	RX02 FLOPPY DISK DRIVE ASSY. - DRAWING DIRECTORY	-		D-IA-7010696-Ø-Ø	POWER HARNESS (VARIATIONS)	E/M
	E-UA-RX02-Ø-Ø	RX02 FLOPPY DISK DRIVE ASSY.	E/M				
	C-PL-RX02-Ø-Ø	RX02 FLOPPY DISK DRIVE ASSY. - PARTS LIST	-				
	A-SP-RX02-0-2	RX02 ENGINEERING SPECIFICATION	E/M				
	EK-ØRXØ2-TM	RXØ2 TECHNICAL MANUAL	E/M	8	B-DD-7013077-Ø	FLEXIBLE DISK DRIVE ASSY. - DRAWING DIRECTORY	-
	C-IA-7015580-Ø-Ø	CABLE ASSY. - M7744/M7745	E/M		E-UA-7013077-Ø-Ø	FLEXIBLE DISK DRIVE ASSY.	E/M
	E-IA-7412666-Ø-Ø	COVER, TOP	M		B-PL-7013077-0-0	FLEXIBLE DISK DRIVE ASSY. - P/L	-
	D-UA-BC05L-Ø-Ø	CABLE, JUMPER	E/M				
	C-MD-7409479-Ø-Ø	PLATE, PRESSURE	M	9	A-SP-3700229-Ø-Ø	PACKAGING INSTRUCTIONS - DRIVE	-
	C-MD-7413350-Ø-Ø	BRACKET, SHIPPING	M				
	A-PS-1212157-Ø-Ø	SLIDES, CHASSIS	M				
				10	B-DD-M7745-Ø	RX02 READ/WRITE CONTROL BOARD- DRAWING DIRECTORY	-
2	D-AD-7010721-Ø-Ø	BEZEL ASSY.	M		D-UA-M7745-Ø-Ø	RX02 READ/WRITE CONTROL BOARD - ASSY.	E
	E-MD-741450-Ø-Ø	BEZEL (DIECAST)	M		K-PL-M7745-Ø-Ø	RX02 READ/WRITE CONTROL BOARD - PARTS LIST	E
					D-CS-M7745-Ø-1	RX02 READ/WRITE CONTROL BOARD - CIRCUIT SCHEMATIC	E
3	D-IA-7413002-Ø-Ø	PLATE, FRONT, SINGLE DRIVE	M	11	B-DD-M7744-Ø	RX02 FLOPPY DISK CONTROLLER BD-DRAWING DIRECTORY	-
	C-SS-7413002-Ø-Ø	SILK SCREEN, SINGLE DRIVE	M		D-UA-M7744-Ø-Ø	RX02 FLOPPY DISK CONTROLLER BD-ASSY.	E
					K-PL-M7744-Ø-Ø	RX02 FLOPPY DISK CONTROLLER BD. - PARTS LIST	E
					D-CS-M7744-Ø-1	RX02 FLOPPY DISK CONTROLLER BD. - CIRCUIT SCHEMATIC	E
4	D-IA-7412853-Ø-Ø	PLATE, FRONT, DUAL DRIVE	M				
	C-SS-7412853-Ø-Ø	SILK SCREEN, DUAL DRIVE	M				
5	D-IA-7010679-Ø-Ø	CHASSIS, W/HINGE	M				
	E-IA-7412665-Ø-Ø	CHASSIS, FLEXIBLE DISK DRIVE	M				
	C-MD-7413236-Ø-Ø	HINGE, LOGIC	M				
6	B-DD-7013503-Ø	PLENUM/FAN ASSY. - DRAWING DIRECTORY (OLD STYLE)	-	12	A-SP-3700185-Ø-Ø	PACKAGING INSTRUCTIONS - INTERPLANT (W/BEZEL)	-
	E-UA-7013503-Ø-Ø	PLENUM/FAN ASSY. (OLD STYLE)	E/M				
				13	A-SP-3700185-01	PACKAGING INSTRUCTIONS - INTERPLANT (W/O BEZEL)	-
	B-DD-7015622-Ø	PLENUM/FAN ASSY. - DRAWING DIRECTORY (NEW STYLE)	-				
	E-UA-7015622-Ø-Ø	PLENUM/FAN ASSY. (NEW STYLE)	-	14	A-SP-3700193-Ø-Ø	PACKAGING INSTRUCTIONS - CUSTOMER	-

TYPE: E ELECTRICAL
M MECHANICAL
E/M ELECTRO/MECHANICAL

digital

TITLE

RX02-FLOPPY DISK DRIVE

SHEET 3 OF 3

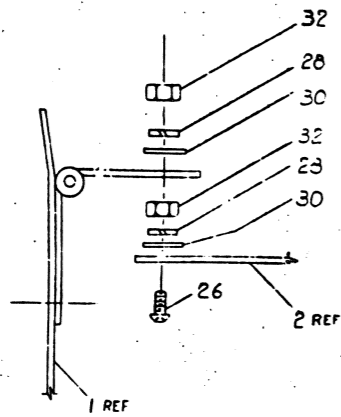
SIZE CODE
B DD

NUMBER
RX02-Ø

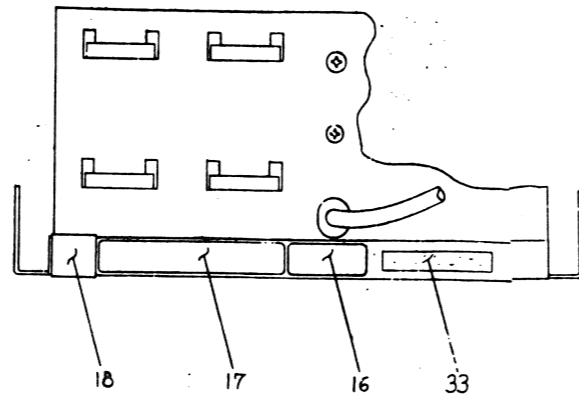
REV
C

DRR 108A

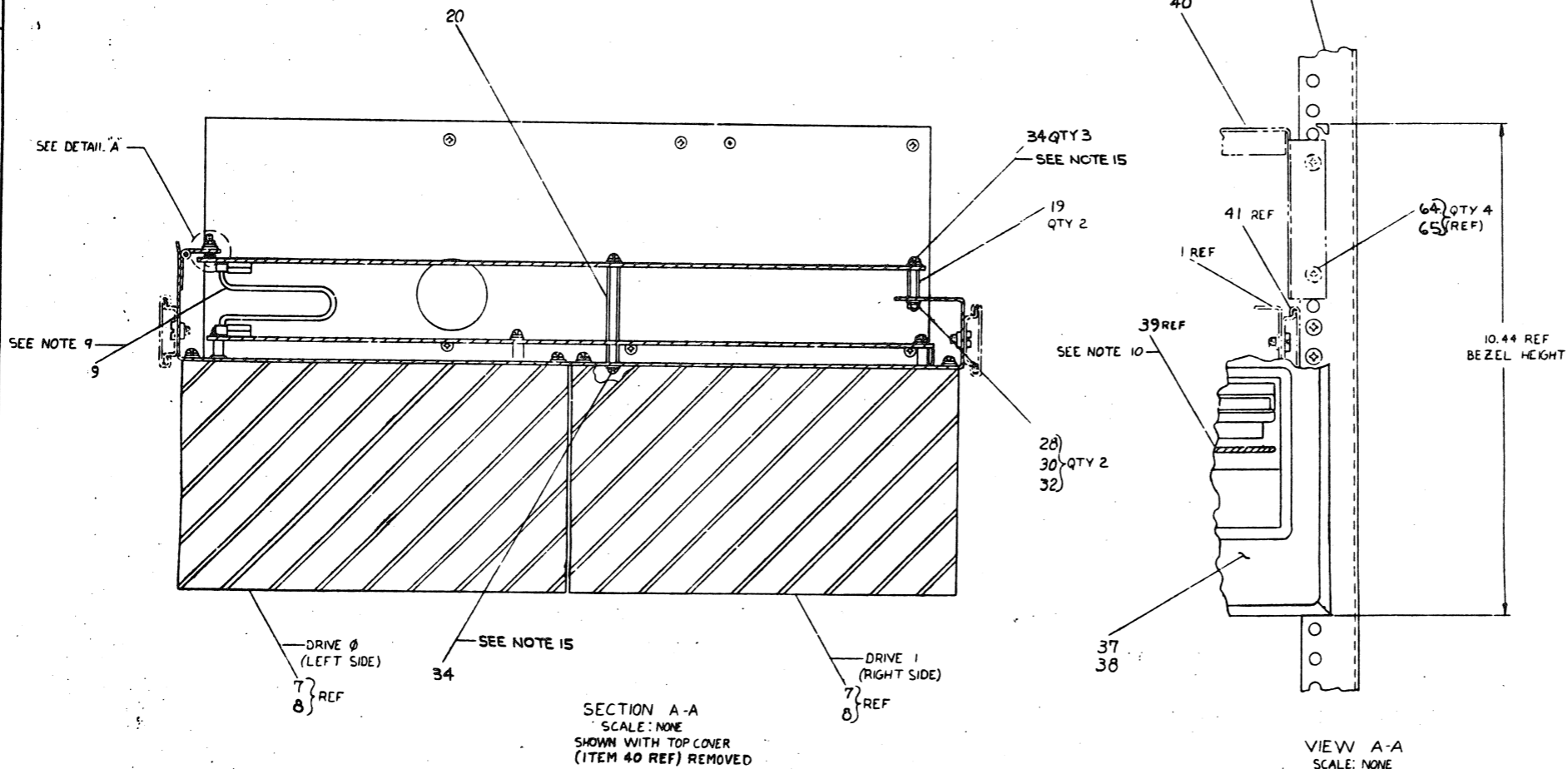
THIS DRAWING AND ASSOCIATED NOTES ARE THE PROPERTY OF ANALOG DEVICES CORPORATION AND SHALL BE KEPT IN CONFIDENTIALITY. IT IS TO BE USED ONLY FOR THE PURPOSES SPECIFIED IN THE ORDER. IT IS NOT TO BE REPRODUCED OR TRANSMITTED IN ANY FORM OR BY ANY MEANS, ELECTRONIC OR MECHANICAL, INCLUDING PHOTOCOPYING, RECORDING, OR BY ANY INFORMATION STORAGE AND RETRIEVAL SYSTEM.



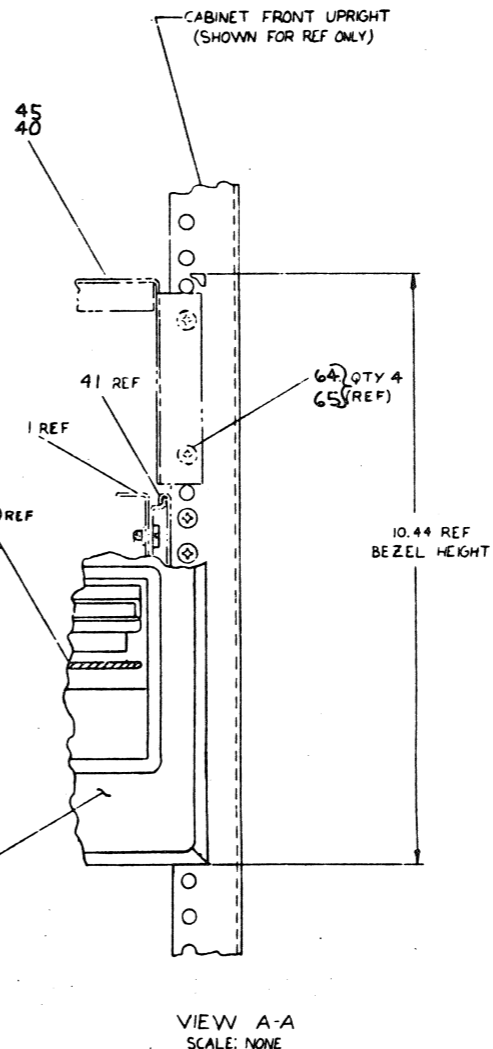
DETAIL A
2 PLACES



VIEW B-B
REAR VIEW
PLENUM AND DRIVE
NOT SHOWN



SECTION A-A
SCALE: NONE
SHOWN WITH TOP COVER
(ITEM 40 REF) REMOVED

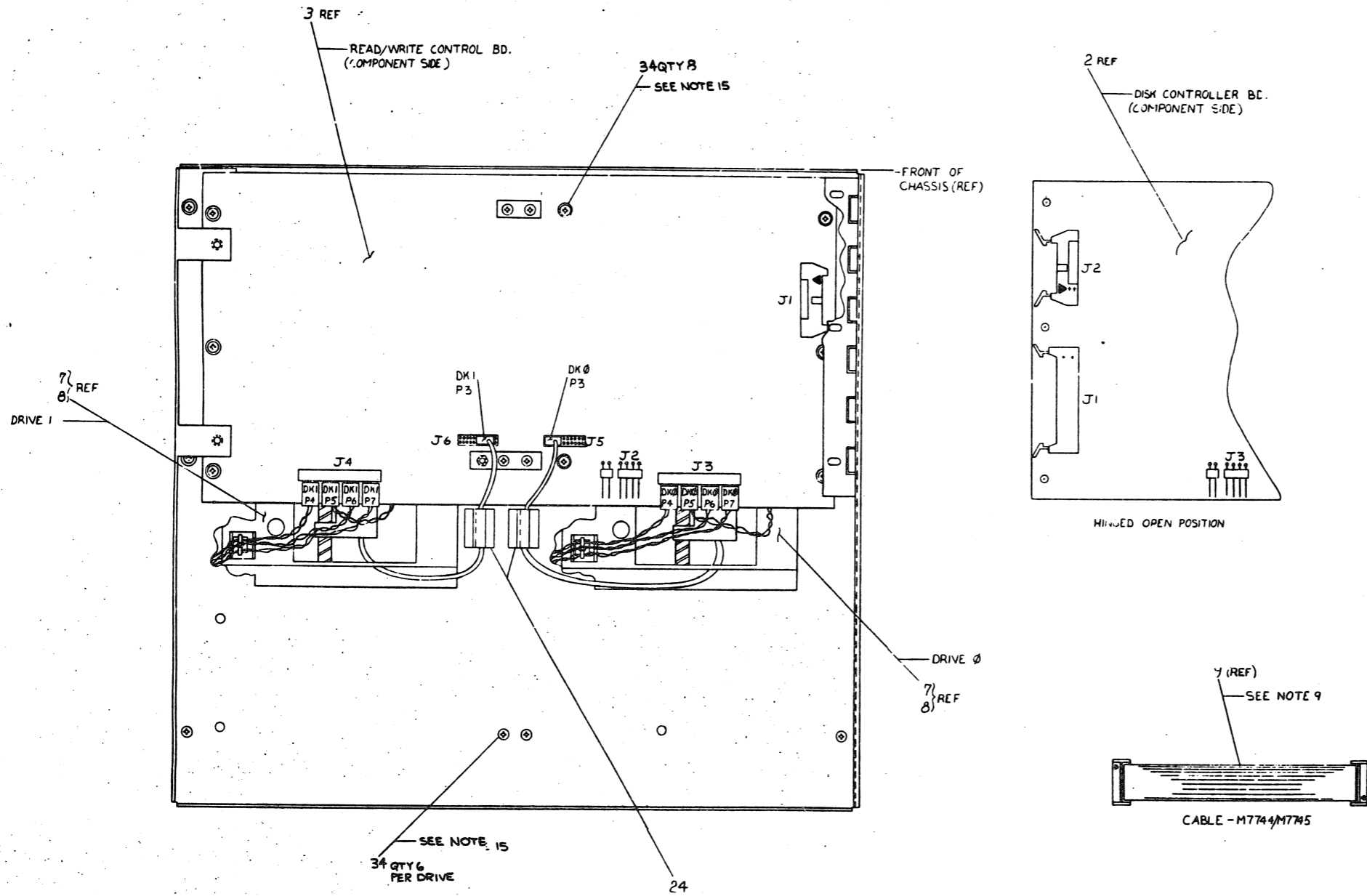


VIEW A-A
SCALE: NONE

NOTES:

- 1- 8 EACH BINDER HD SCR # 3/8 X 3/8 L TO MOUNT SLIDES TO CHASSIS AND 4 EACH #10-32 BARNUTS TO MOUNT SLIDES TO CAB UPRIGHTS ARE SUPPLIED WITH EACH SET OF SLIDES. SEE PURCH. SPEC. (ITEM 4) FOR ASSY INSTRUCTIONS.
- 2 THE "BC05 CABLE" ITEM #10 OR 11 MUST HAVE THE RED STRIPE FACING THE FRONT OF THE CHASSIS (IN A SIDE OF CONN) WHEN IT IS PLUGGED INTO THE CONTROL BOARD. DRESS THE CABLE AGAINST THE WALL OF THE CHASSIS & ROUTE THE CABLE OUT OF THE REAR OF THE CHASSIS THEN DOWN THROUGH THE PRESSURE PLATE (ITEM #21).
- 3- WITH A SINGLE DRIVE SYSTEM, TIE "PWR SPLY. PWR HARNS-P3" TO REAR OF POWER SUPPLY USING A TIE WRAP (ITEM #23).
- 4- TO SELECT VOLTAGE ON 50HZ VARIATIONS SEE LEGEND ON POWER SUPPLY DRAWING E-UA-H771-0-0.
- 5- PLENUM/FAN ASSY (ITEMS #12,13,14#15) SHOWN ON THIS DRAWING. FOR MOUNTING INSTRUCTIONS SEE DRAWING E-UA-7015622-0-0.
- 6- FOR LA,LC&LD VARIATIONS, RACK MTG. HARDWARE & CABINET MOUNTING IS NOT USED.
- 7- IF NO PLENUM ASSY (ITEMS #12,13,14#15) IS USED, A BLANK FEMALE HOUSING ON END OF FAN PLUG IS PROVIDED.
8. TO FULFILL UL/CSA REQUIREMENTS, ITEM 36, A BLACK SHIPPING BRACKET, MUST BE MOUNTED IN PLACE WHENEVER DRIVE IS IN SERVICE. ITEM 36 MAY BE UNBOLTED FROM CABINET FOR MAINTENANCE PURPOSES BUT MUST BE REPLACED WHEN RESTORING DRIVE TO NORMAL SERVICE.
- 9- ITEM 9 (BD INTERCONNECT CABLE) IS TO BE INSTALLED WITHOUT A TWIST.
- 10- A DISKETTE, ITEM 39, IS SUPPLIED WITH EACH DRIVE OF A FLOPPY DISK SYSTEM.
- 11- WHEN PLENUM IS USED, MATCH WIRING COLORS FROM FAN HARNESS TO POWER HARNESS & 4 BLANK FEMALE HOUSING.
- 12 THE RX02 DISK CONTROLLER MODULE (ITEM #2) HAS A DUAL SWITCH WHICH MUST BE MANUALLY POSITIONED FOR PROPER OPERATION WITH DIFFERENT INTERFACES AND SYSTEMS. SEE USER'S GUIDE (EKRX02-UG) FOR PROPER SWITCH CONFIGURATION REQUIRED. REFER TO DETAIL "B" ON SHEET #4 OF 4.
- 13 ITEMS 60 THRU 65 ON THIS ASSY ARE ALL REFERENCE ITEMS. THESE ITEMS ARE SUPPLIED BY THE HARDWARE KIT (A-PL-7017035-0-0) AND ARE SHOWN AT THIS ASSY LEVEL FOR MOUNTING AND INSTALLING FOR THE DIFFERENT RX02 VARIATIONS.
14. FOR EARLIER VERSIONS OF PLENUM/FAN ASSY (TYPE WITH BOXER FAN) REFER TO E-UA-RX02-00 REV A.
15. SEMS SCREWS, ITEM 34, CAN BE REPLACED BY USING ONE EACH OF ITEMS 25,28 & 30. TORQUE SEMS SCREWS TO 8± 1 IN-LBS.
16. ONLY CHASSIS TRACK SLIDES REQUIRE ITEMS 63 AND 65.

THIS DRAWING AND ASSOCIATED PARTS AND MATERIALS ARE THE PROPERTY OF THE GOVERNMENT AND ARE TO BE USED ONLY FOR THE PURPOSES AUTHORIZED BY THE CONTRACT. IT IS TO BE RETURNED TO THE GOVERNMENT AT THE END OF THE PROJECT.



TOP VIEW OF CRITICAL WIRE ROUTING
ALL WIRES FROM DRIVE 0 + DRIVE 1 MUST BE ROUTED AS SHOWN

FORM 1	FORM 2	FORM 3	FORM 4	FORM 5	FORM 6	FORM 7	FORM 8	FORM 9	FORM 10	FORM 11	FORM 12	FORM 13	FORM 14	FORM 15	FORM 16	FORM 17	FORM 18	FORM 19	FORM 20	FORM 21	FORM 22	FORM 23	FORM 24	FORM 25	FORM 26	FORM 27	FORM 28	FORM 29	FORM 30	FORM 31	FORM 32	FORM 33	FORM 34	FORM 35	FORM 36	FORM 37	FORM 38	FORM 39	FORM 40	FORM 41	FORM 42	FORM 43	FORM 44	FORM 45	FORM 46	FORM 47	FORM 48	FORM 49	FORM 50	FORM 51	FORM 52	FORM 53	FORM 54	FORM 55	FORM 56	FORM 57	FORM 58	FORM 59	FORM 60	FORM 61	FORM 62	FORM 63	FORM 64	FORM 65	FORM 66	FORM 67	FORM 68	FORM 69	FORM 70	FORM 71	FORM 72	FORM 73	FORM 74	FORM 75	FORM 76	FORM 77	FORM 78	FORM 79	FORM 80	FORM 81	FORM 82	FORM 83	FORM 84	FORM 85	FORM 86	FORM 87	FORM 88	FORM 89	FORM 90	FORM 91	FORM 92	FORM 93	FORM 94	FORM 95	FORM 96	FORM 97	FORM 98	FORM 99	FORM 100
--------	--------	--------	--------	--------	--------	--------	--------	--------	---------	---------	---------	---------	---------	---------	---------	---------	---------	---------	---------	---------	---------	---------	---------	---------	---------	---------	---------	---------	---------	---------	---------	---------	---------	---------	---------	---------	---------	---------	---------	---------	---------	---------	---------	---------	---------	---------	---------	---------	---------	---------	---------	---------	---------	---------	---------	---------	---------	---------	---------	---------	---------	---------	---------	---------	---------	---------	---------	---------	---------	---------	---------	---------	---------	---------	---------	---------	---------	---------	---------	---------	---------	---------	---------	---------	---------	---------	---------	---------	---------	---------	---------	---------	---------	---------	---------	---------	---------	---------	----------

FORM 101 RX02 FLOPPY DISK DRIVE ASSY
FORM 102 JUA RX02-0-0 C

THIS DRAWING AND SPECIFICATIONS, HEREIN ARE THE PROPERTY OF DIGITAL EQUIPMENT CORPORATION AND SHALL NOT BE REPRODUCED OR COPIED OR USED IN WHOLE OR IN PART AS THE BASIS FOR THE MANUFACTURE OR SALE OF ITEMS WITHOUT WRITTEN PERMISSION. COPYRIGHT © 1978 DIGITAL EQUIPMENT CORPORATION

ITEM NO.	DESCRIPTION	RX02-XX															
		AA	AC	AD	BA	BC	BD	CA	CC	DA	DC	DD	EA	EC	ED	EA	ED
1	D-IA-7010670-0-0	CHASSIS, W/HINGE	1	1	1	1	1	1	1	1	1	1	1	1	1	1	1
2	D-UA-M7744-0-0	DISK CONTROL BOARD	1	1	1	1	1	1	1	1	1	1	1	1	1	1	1
3	D-UA-M7745-0-0	READ/WRITE BOARD	1	1	1	1	1	1	1	1	1	1	1	1	1	1	1
4	E-UA-H771-A-0	H-771A POWER SUPPLY (110V, 60HZ)	1	1	1	1	1	1	1	1	1	1	1	1	1	1	1
5	E-UA-H771-C-0	H-771C POWER SUPPLY (110V, 50HZ)	1	1	1	1	1	1	1	1	1	1	1	1	1	1	1
6	E-UA-H771-E-0	H-771E POWER SUPPLY (230V, 50HZ)	1	1	1	1	1	1	1	1	1	1	1	1	1	1	1
7	E-UA-7013-77-00	FLEXIBLE DISK DRIVE - 60 HZ	1	1	1	1	1	1	1	1	1	1	1	1	1	1	1
8	E-UA-7013077-01	FLEXIBLE DISK DRIVE - 50HZ	1	1	1	1	1	1	1	1	1	1	1	1	1	1	1
9	C-IA-7015580-0-0	CABLE ASSY, M7744/M7745	1	1	1	1	1	1	1	1	1	1	1	1	1	1	1
10	D-JA-BC05L-15-0	CABLE, JUMPER, 15 FT.	1	1	1	1	1	1	1	1	1	1	1	1	1	1	1
11	D-UA-BC05L-8-0	CABLE, JUMPER, 8 FT.	1	1	1	1	1	1	1	1	1	1	1	1	1	1	1
12	E-UA-7015622-0-4	PLENUM ASSY, W/O PACK 110V DUAL	1	1	1	1	1	1	1	1	1	1	1	1	1	1	1
13	E-UA-7015622-0-5	PLENUM ASSY, W/O PACK 230V DUAL	1	1	1	1	1	1	1	1	1	1	1	1	1	1	1
14	E-UA-7015622-0-6	PLENUM ASSY, W/O PACK 110V SINGLE	1	1	1	1	1	1	1	1	1	1	1	1	1	1	1
15	E-UA-7015622-0-7	PLENUM ASSY, W/O PACK 230V SINGLE	1	1	1	1	1	1	1	1	1	1	1	1	1	1	1
16	A-PS-3613211-00	LABEL, CSA	1	1	1	1	1	1	1	1	1	1	1	1	1	1	1
17	A-PS-3613210-00	DEC SERIAL LABEL	1	1	1	1	1	1	1	1	1	1	1	1	1	1	1
18	A-PS-3612067-00	U-UL RECOGNIZED LABEL	1	1	1	1	1	1	1	1	1	1	1	1	1	1	1
19	9009120-02	STAND-OFF, M/F 6-32X.50L	2	2	2	2	2	2	2	2	2	2	2	2	2	2	2
20	9007604-00	SPACER, 6-32 X 2.00L	1	1	1	1	1	1	1	1	1	1	1	1	1	1	1
21	C-MD-7409479-0-0	PLATE, PRESSURE	1	1	1	1	1	1	1	1	1	1	1	1	1	1	1
22	9107245-00	TUBING, EXT. .38ID BLACK	1	1	1	1	1	1	1	1	1	1	1	1	1	1	1
23	9007031-00	TIE WRAP	1	1	1	1	1	1	1	1	1	1	1	1	1	1	1
24	9008341-00	PVC CLIP, TIES/CLASP 1W X .75L	2	2	2	2	2	2	2	2	2	2	2	2	2	2	2
25	9006023-01	SCR. PH. P.H. 6-32 X .44L	18	18	18	24	24	24	24	24	24	24	18	18	18	18	18
26	9006024-01	SCR. PH. P.H. 6-32 X .50L	2	2	2	2	2	2	2	2	2	2	2	2	2	2	2
27	9006039-01	SCR. PH. P.H. 8-32 X .50L	9	9	9	9	9	9	9	9	9	9	9	9	9	9	9
28	9007801-00	WASHER, SPLIT LK NO.6	6	6	6	6	6	6	6	6	6	6	6	6	6	6	6
29	9006690-00	WASHER, SPLIT LK.NO.8	9	9	9	9	9	9	9	9	9	9	9	9	9	9	9
30	9006653-00	WASHER, PLAT NO.6	6	6	6	6	6	6	6	6	6	6	6	6	6	6	6
31	9006656-00	WASHER, FLAT NO.8	6	6	6	6	6	6	6	6	6	6	6	6	6	6	6
32	9006558-00	NUT, HEX, NO 6-32	6	6	6	6	6	6	6	6	6	6	6	6	6	6	6
33	3615996-01	LABEL, SECURING NOTE	1	1	1	1	1	1	1	1	1	1	1	1	1	1	1
34	9009984-02	SCR, SEMS, PH.P.H. 6-32 x .44L	18	18	18	24	24	24	24	24	24	24	18	18	18	18	18
35	9009813-00	SCR, PH. P.H. 10-24 x .38L TAPTITE	1	1	1	1	1	1	1	1	1	1	1	1	1	1	1
36	C-MD-7413350-01	BRACKET, SHIPPING, BLACK	1	1	1	1	1	1	1	1	1	1	1	1	1	1	1
37	D-AD-7010721-03	BEZEL ASSY, SINGLE DRIVE (RX02)	1	1	1	1	1	1	1	1	1	1	1	1	1	1	1
38	D-AD-7010721-04	BEZEL ASSY, DUAL DRIVE (RX02)	1	1	1	1	1	1	1	1	1	1	1	1	1	1	1
39	A-PS-3612408-00	DISKETTE	1	1	1	2	2	2	2	2	2	2	1	1	1	1	1
40	E-IA-7412666-0-0	COVER, TOP	1	1	1	1	1	1	1	1	1	1	1	1	1	1	1
41	A-PS-1212157-00	SLIDE, CHASSIS	1	1	1	1	1	1	1	1	1	1	1	1	1	1	1

REV. C. PL. RXC2-0-0

REV.	CHANGE NO.	DESCRIPTION	DATE
A	ML001	50 x 1/2 x 1/4 22700 79	2 FEB 79
B	ML002	W.J. SMITH	2 FEB 79
C	ML003	W.J. SMITH (DIP) 2-27-79	2 FEB 79
		G. SCHNEIDER	10 OCT 79

DRN. <i>R. Brown</i>	1597 78	FIRST USED ON	RX02	digital
CHK'D <i>R. Brown</i>	1597 78	TITLE	RX02 FLOPPY DISK DRIVE ASSY.	
ENG. <i>R. Brown</i>	1597 78	PROJ. ENG. <i>R. Brown</i>	9-1-78	
PROD. <i>R. Brown</i>	9-1-78	NEXT HIGHER ASSY.		
B-ED-RX02-0	SCALE	SIZE	CODE	NUMBER
		C	PL	RXC2-0-0
SHEET 1 OF 2	DIST.			REV. C