

LINE	ITEM	DOCUMENT NUMBER	PART NUMBER	DESCRIPTION	QTY	PER VARIATION	REFERENCE DESIGNATOR
					00		
1	1	D-MD-5014024-0-0	5014024-00	DRILL AND ETCH BRD	1		
2	2	EWS		RESISTOR, FINAL TEST, 1/4W, 1%	4		R115, R116, R118, R119
3	3		1000023-00	330.0 MMF 100V 5%200PPM MICA	4		C93, C106-C108
4	4		1000024-00	470.0 MMF 100V 5%200PPM MICA	1		C94
5	5		1000064-00	3.9MFD 10V 10% S.TANT	2		C76, C85
6	6		1000076-00	39 MFD 10V 10% S.TANT	3		C73, C86, C95
7	7		1001610-00	.01 MFD 50V +80-20% 25U CER	74		C1-C6, C8-C39, C40-C45, C47-C49, C51-C53, C55-C68, C70, C71, C77,
						CONT	C79-C82, C84, C88, C104
8	8		1001776-00	1 MFD 35V 10% S.TANT	4		C74, C75, C92, C97
9	9		1004812-00	15 MFD 20V 10% S.TANT	1		C87
10	10		1005784-00	.01 MFD 100V 10% MYLR	1		C101
11	11		1010978-32	.047 MFD 50V 10% CER	1		C96
12	12		1013466-07	220.0 MMF 50V 5% CER	1		C91
13	13		1013466-08	680.0 MMF 50V 10% X7R CER	2		C89, C90
14	14		1013466-09	1000.0 MMF 50V 10% X7R CER	1		C83
15	15		1013466-10	3300.0 MMF 50V 5% CER	4		C98, C100, C103, C105
16	16		1013466-11	.22 MFD 50V +80-20% 25U CER	2		C99, C102
17	17		1111577-00	1N 4454 TR= 4NS PIV= 50 S	16		D1, D7-D20, D22
18	18		1113953-00	1N 5523D VZ= 5.1 1%	1		D21
19	19		1114117-00	1N 4152 PIV=40 I=75	5		D2-D6
20	20		1209941-02	HEADER 100 40POS RT ANGLE	1		J12
21	21		1209941-03	HEADER RT ANGLE LEFT L	5		
22	22		1209941-04	HEADER RT ANGLE, RIGHT	5		
23	23		1209941-05	HEADER, 100 10POS RT ANGLE	1		J11
24	24		1209941-06	HEADER, 100 20POS RT ANGLE	3		J4-J6
25	25		1210385-01	PIN 1POS WIRE WRAP	10		TP17-TP26
26	26		1213922-02	HEADER 3POS	1		J14
27	27		1213922-04	HEADER 6POS	1		J2
28	28		1300229-00	100.0 .25 W 5.0 % CC	5		R48, R133-R136

REVISION HISTORY		BASIC PART NO: 5414025		DRN:	ART SIMM	DATE: 18-APR-79	D I G I T A L			
ENG	ECO NUMBER	REV	SECTION A OF A	CHK'D:	P. KENDRICK	DATE: 18-APR-79	TITLE PARTS LIST			
---	INITIAL	A	SECTION VARIATION INDEX	DES.ENG:	MIKE BROWN	DATE: 18-APR-79	DRIVE LOGIC			
MB	5414025-CX001	B	[A] 00	RESP.ENG.:	MIKE BROWN	DATE: 18-APR-79	DOCUMENT NUMBER			
MB	5414025-CX002	C	[B]	MFG.ENG.:	D. LICK	DATE: 18-APR-79	SIZE	CODE	NUMBER	REV
MZ	5414025-CX003	D	[C]	ASSEMBLY NUMBER:		TOP DOCUMENT NUMBER:	K	PL	5414025-0-DBF	H
MB	5414025-CX005	E	[D]	ID-UA-5414025-0-0		*RL02	FILE NAME:		EDIT #	
MB	5414025-CX010A	F	[E]				Z0496H.PLS		31	
MZ	5414025-CX014	H	[F]							
	W.C.M. 2 MAR 81		[G]							
	M. 2 and 3/2/81		[H]							
			[I]							
			[J]							
			[K]							
			[L]							
			[M]							
			[N]							

THIS DRAWING AND SPECIFICATIONS HEREIN, ARE THE PROPERTY OF DIGITAL EQUIPMENT CORPORATION AND SHALL NOT BE REPRODUCED OR COPIED OR USED IN WHOLE OR IN PART AS THE BASIS FOR THE MANUFACTURE OR SALE OF ITEMS WITHOUT WRITTEN PERMISSION. COPYRIGHT (C) 1981, DIGITAL EQUIPMENT CORPORATION

P A R T S L I S T

QTY PER VARIATION

SHEET A2 OF A3

REFERENCE DESIGNATOR

LINE ITEM	DOCUMENT NUMBER	PART NUMBER	DESCRIPTION	QTY PER VARIATION	REFERENCE DESIGNATOR
29		1300271-00	.25 W 5.0 %	4	R3,R14,R41,R143
30		1300315-00	.50 W 5.0 %	3	R16,R73,R130
31		1300316-00	.25 W 5.0 %	4	R1,R2,R79,R142
32		1300365-00	.25 W 5.0 %	15	R15,R39,R40,R42,R47,R52,R54,R56,
33		1300411-00	.25 W 1.0 % RN5SD-F10	1	R144
34		1300439-00	.25 W 5.0 %	3	R93,R124,R126
35		1300447-00	.25 W 5.0 %	35	R6-R13,R26-R28,R34,R35,R38,R43,
36		1300479-00	.25 W 5.0 %	2	R127,R138,R145
37		1302388-00	.25 W 5.0 %	13	R18-R21,R45,R50,R66,R67,R71,R87,
38		1302391-00	.25 W 5.0 %	1	R59
39		1302394-00	.25 W 5.0 %	1	R95
40		1302398-00	.25 W 5.0 %	1	R55
41		1302466-00	.25 W 5.0 %	1	R121
42		1302514-00	.25 W 5.0 %	2	R91,R120
43		1302666-00	.25 W 5.0 %	1	R94
44		1302871-00	.25 W 1.0 % RN5SD-F10	1	R88
45		1303044-00	.25 W 1.0 %	1	R25
46		1303047-00	.25 W 1.0 % RN5SD-F10	5	R64,R65,R83,R85,R113
47		1303114-00	.25 W 1.0 %	2	R89,R117
48		1303312-00	.25 W 1.0 % RN5SD-F10	7	R17,R29-R31,R36,R60,R63
49		1304693-00	.25 W 1.0 % RN5SD-F10	1	R108
50		1304841-00	.25 W 5.0 %	1	R81
51		1304862-00	.25 W 1.0 % RN5SD-F10	1	R110
52		1304870-00	.25 W 1.0 % RN5SD-F10	1	R33
53		1305124-00	.25 W 1.0 % RN5SD-F10	2	R84,R86
54		1305265-00	.25 W 1.0 % RN5SD-F10	1	R24
55		1305337-00	.25 W 1.0 % RN5SD-F10	2	R96,R99
56		1305405-00	.25 W 1.0 % RN5SD-F10	1	R23
57		1309595-00	.25 W 5.0 %	3	R46,R51,R132
58		1310632-00	.25 W 1.0 % RN5SD-F10	1	R109
59		1317303-00	.25 W 1.0 % RN5SD-F10	2	R97,R100
60		1312929-00	.25 W 5.0 %	2	R111,R112
61		1312930-00	.25 W 5.0 %	3	R68,R69,R137
62		1312989-00	.25 W 1.0 % RN5SD-F10	3	R22,R103,R104
63		1313589-00	.25 W 1.0 % RN5SD-F10	1	R90
64		1313846-00	.25 W 1.0 % RN5SD-F10	1	R32
65		1314041-00	.25 W 1.0 % RN5SD-F10	1	R37
66		1314491-00	.25 W 1.0 % RN5SD-F10	1	R114
67		1513489-00	.25 W 1.0 % RN5SD-F10	3	Q7,Q10,Q12
68		1513490-00	2N 4401 NPN 350MW SI 40 20	10	Q1-Q3,Q5,Q6,Q8,Q9,Q11,Q13,Q15
69		1513697-00	2N 5640 FET N CHNHL	1	Q14
70		1909928-00	7416 INVERTER GATE-HEX 11	4	E9,E10,E68,E85
71		1910046-00	7442 DECODER-1 OF 10,BCD	1	ESS

SECTION A OF A

DRIVE LOGIC

TITLE

SIZE CODE
K PL 5414025-0-DBP
REV DOCUMENT NUMBER

AUTOMATED BY PRTLST.3H(20)

P A R T S L I S T

SHEET A3 OF A3

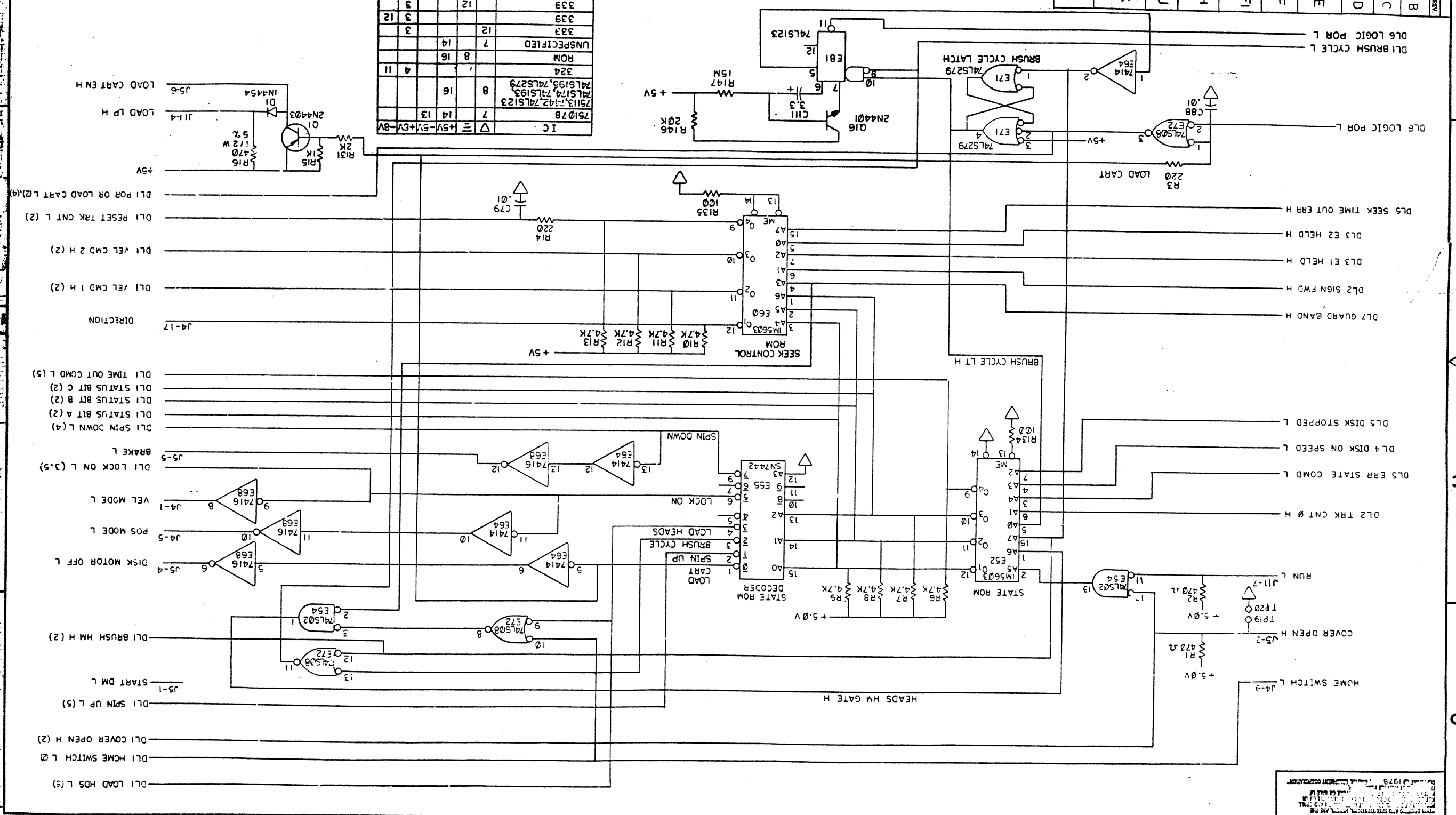
LINE	ITEM	DOCUMENT NUMBER	PART NUMBER	DESCRIPTION	QTY PER VARIATION 00	REFERENCE DESIGNATOR
72	72		1910268-00	DEC 75107B RECEIVER, LINE, DUAL,	4	E57, E61, E65, E87
73	73		1910298-00	741 OP AMP GEN PURP. COM	1	E31
74	74		1910363-00	7496 SHIFT REG., 5BIT	1	E63
75	75		1910536-00	74S10 NAND GATE-TRIPLE 3IN	1	E45
76	76		1910655-00	74157 MUX 2 TO 1 QUAD	2	E23, E24
77	77		1911341-00	75113 DRIVER, LINE, DUAL, MA	3	E77, E83, E86
78	78		1912107-01	324ANOP AMP, QUAD	1	E49
79	79		1912108-00	339 VOLT CMPTTR, QUAD	3	E5, E36, E56
80	80		1912541-00	79M05 VOLT REG, FIX -5V	1	Q4
81	81		1912697-00	LS174 FF-D HEX W/CLEAR	2	E37, F41
82	82		1912799-00	LS00 NAND-GATE-QUAD 2IN, P	4	E7, E15, E44, E67
83	83		1912801-00	LS02 NOR-GATE-QUAD 2IN	4	E1, E30, E39, E54
84	84		1912803-00	6S04 INVERTER GATE, HEL	2	E79, E80
85	85		1912805-00	LS08 AND GATE-QUAD 2IN, PO	6	E14, E34, E38, E69, E72, E76
86	86		1912807-00	LS10 NAND GATE-TRIPLE 3IN	1	E18
87	87		1912810-00	LS20 NAND GATE-DUAL 4IN	1	E2
88	88		1912813-00	LS27 NOR GATE-TRIPLE 3IN	1	E73
89	89		1912816-00	LS32 OR GATE-QUAD 2IN, POS	4	E17, E35, E59, E84
90	90		1912824-00	LS74 FF-D DUAL, EDGE TRIGG	9	E3, E11, E16, E26, E42, E46, E47, E62, E75
91	91		1912829-00	LS86 X-OR GATE-QUAD 2IN	3	E51, E66, E78
92	92		1912837-00	LS123 ONE SHOT-DUAL, RETRIG	1	E50
93	93		1912854-00	LS193 COUNTER, SYNCHR, 4BIT,	3	E27, E28, E43
94	94		1912855-00	LS195 SHIFT REG., 4BIT PARA	5	E19, E22, E25
95	95		1912857-00	LS197 COUNTER, BINARY, PRESET	4	E4, E8, E13, E74
96	96		1912864-00	LS279 LATCH, QUAD-S-R	6	E6, E12, E29, E33, E58, E71
97	97		1913414-00	LS14 INVERTER GATE-HEX SC	2	E40, E48
98	98		1914156-00	LM 393 VOLT, COMPARATOR DUAL	1	E53
99	99		23368A2-00	A2-02, A2-04	1	E52
100	100		23371A2-00	A2-02, A2-04	1	E60
101	101		23444A2-00	A2-02, A2-04	1	E70
102	102		23445A2-00	A2-02, A2-04	1	E32
103	103		9007201-00	TRANSIPADS #10253	1	
104	104		9007791-00	TERM PCB 2POS SOLDER, TURRET	15	TP1-TP4, TP6-TP16
105	105		9009185-00	JUMPER, WIRE, INSULATED, BLACK B	1	W1
106	106		9105740-55	WIRE(WRAP)30AWG UL1423	A/R	
107	107		1012784-00	.047 MFD 50V +80-20% CER	8	C7, C46, C50, C54, C69, C72, C109, C110
108	108		1911324-00	7414 INVERTER, HEX 1IN SCH	1	E64
109	109		1217377-00	TERM QUICK 1POS TAB PC MNT	1	J15
110	110		1005334-00	*** THIS ITEM IS NOT USED ***	-	
111	111		1305608-00	*** THIS ITEM IS NOT USED ***	-	

CONT

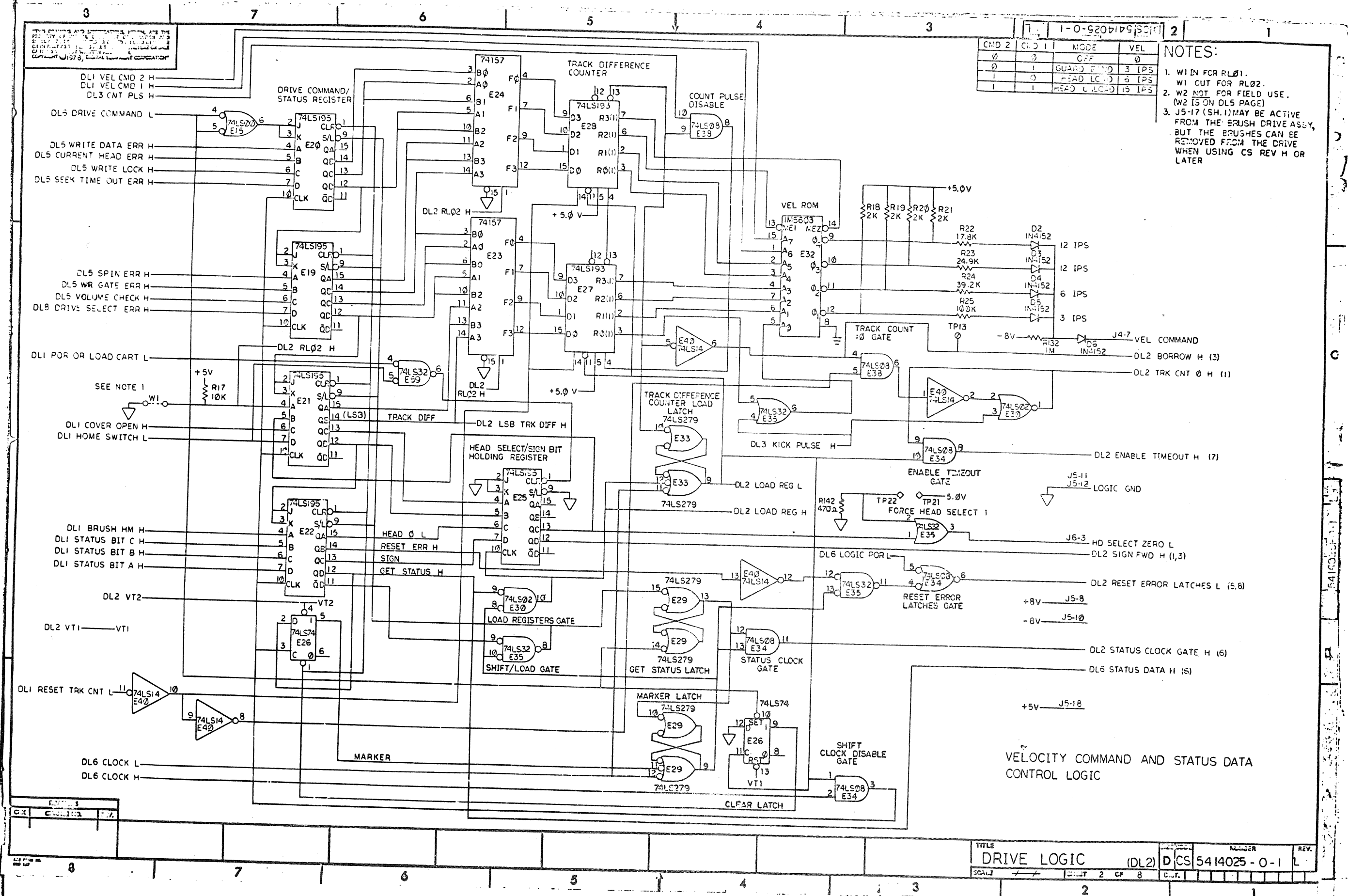
D	I	G	I	T	A	L	TITLE	SECTION A OF A	SIZE	CODE	DOCUMENT NUMBER	REV
							DRIVE LOGIC		K	PL	5414025-0-DRP	H

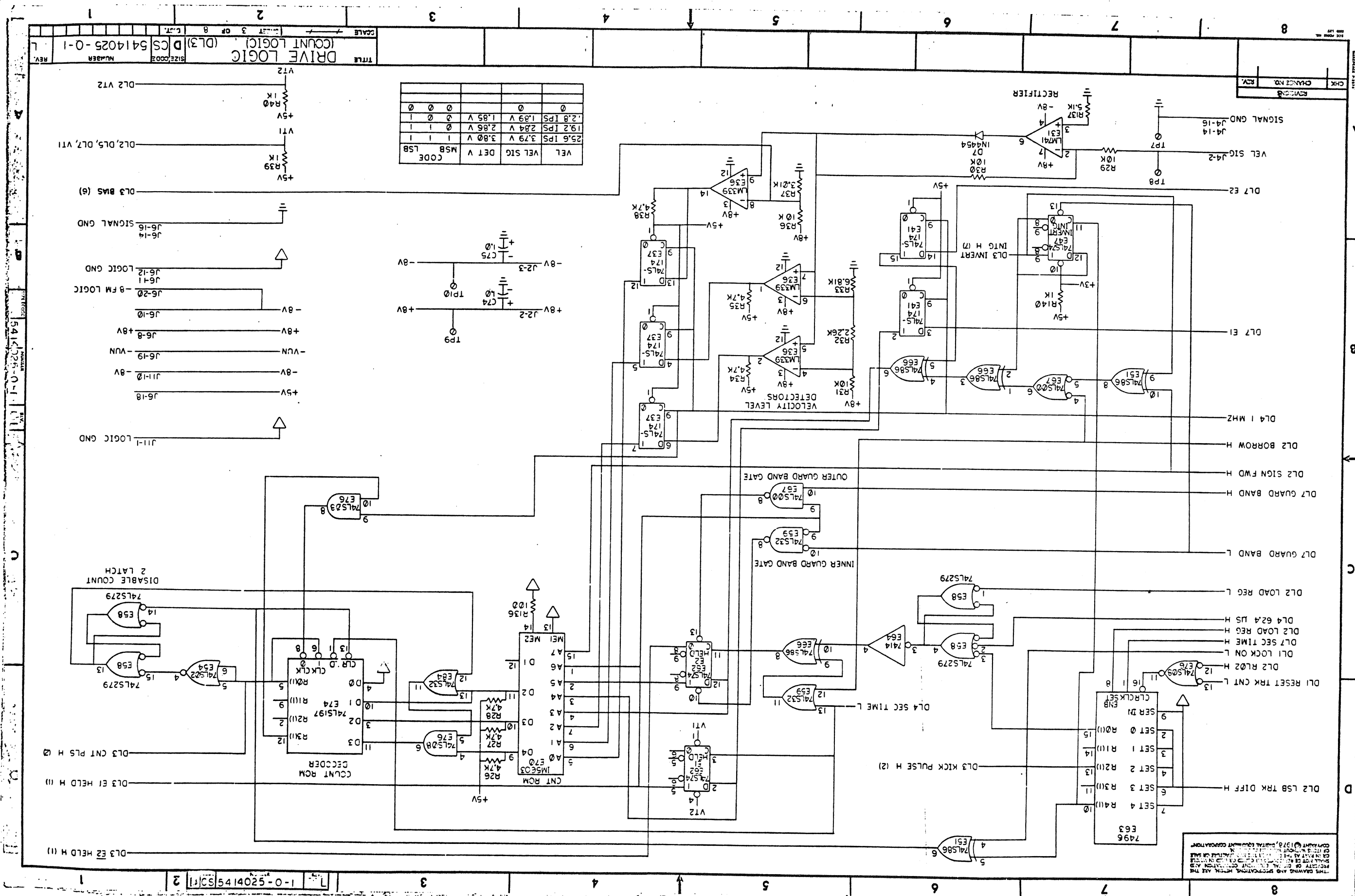
REV	CHG	DATE	BY	APP	DESCRIPTION
B					5414025-CX001
C					5414025-CX002
D					5414025-CX003
E					5414025-CX005
F					5414025-CX006
F1					5414025-CX008
H					5414025-CX009
J					5414025-CX010
K					5414025-CX013
L					5414025-CX013

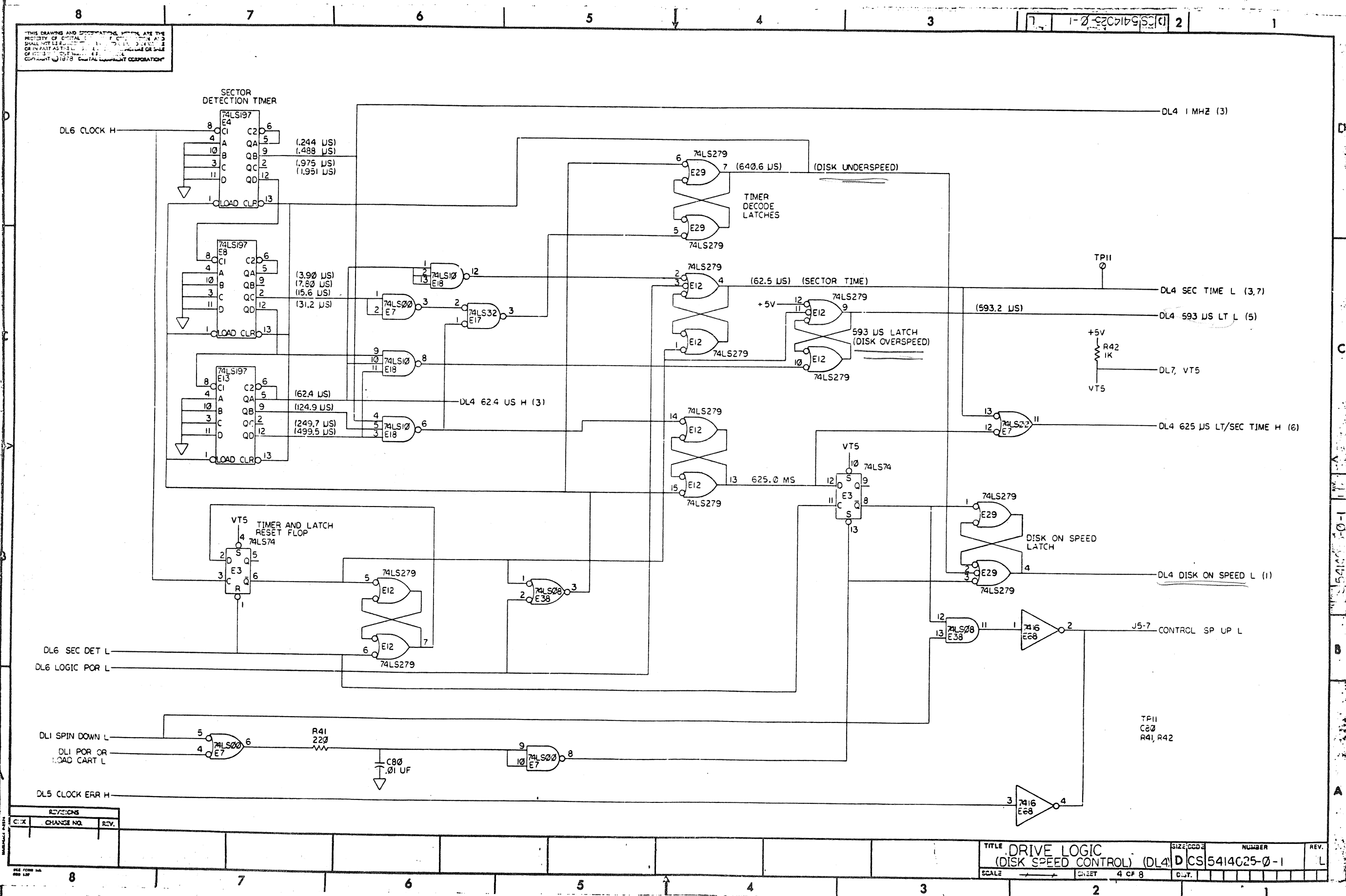
REV	CHG	DATE	BY	APP	DESCRIPTION
B					5414025-CX001
C					5414025-CX002
D					5414025-CX003
E					5414025-CX005
F					5414025-CX006
F1					5414025-CX008
H					5414025-CX009
J					5414025-CX010
K					5414025-CX013
L					5414025-CX013

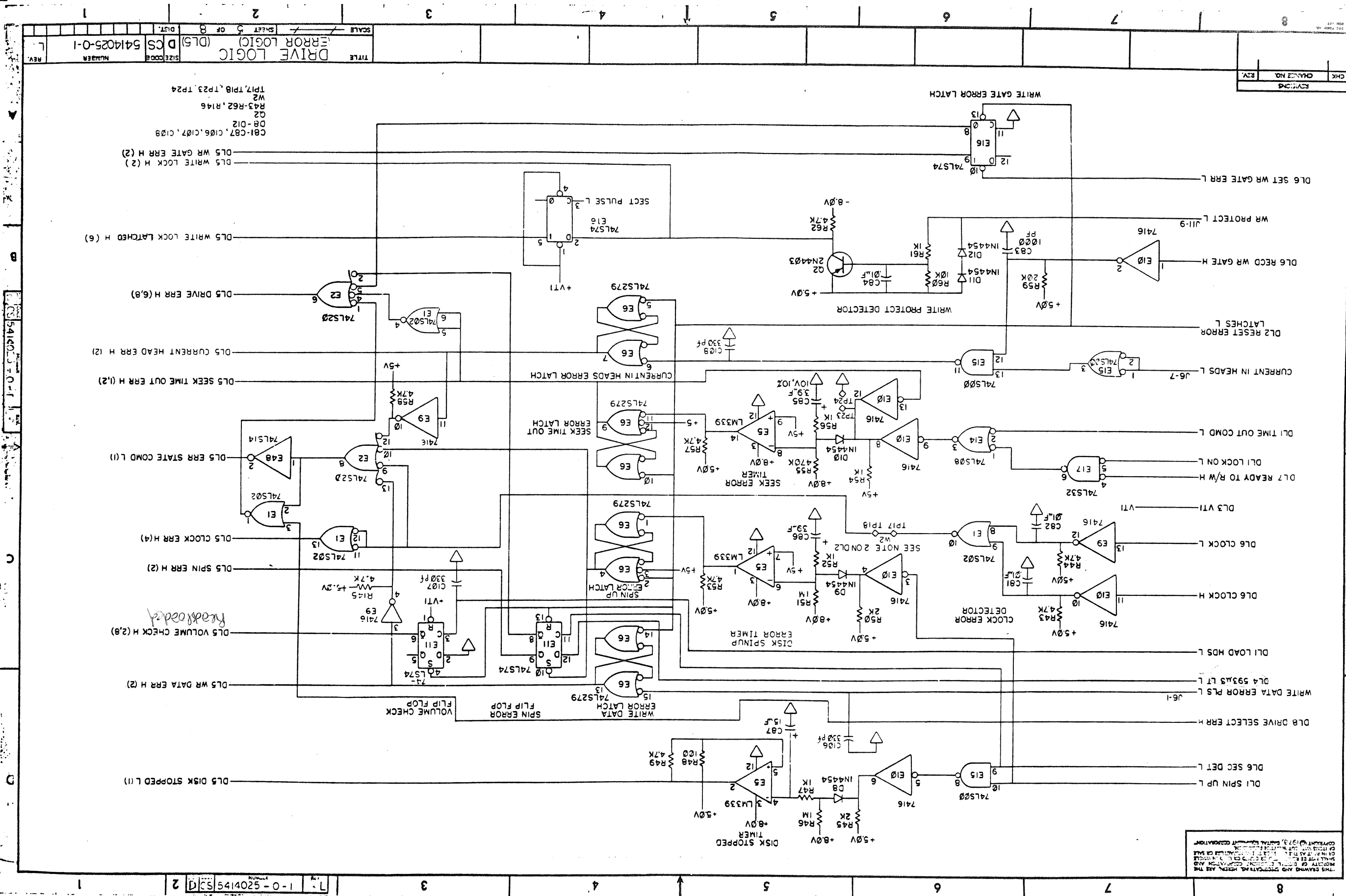


DRIVE LOGIC (DLI) STATE CONTROL (DLI) 5414025-0-1

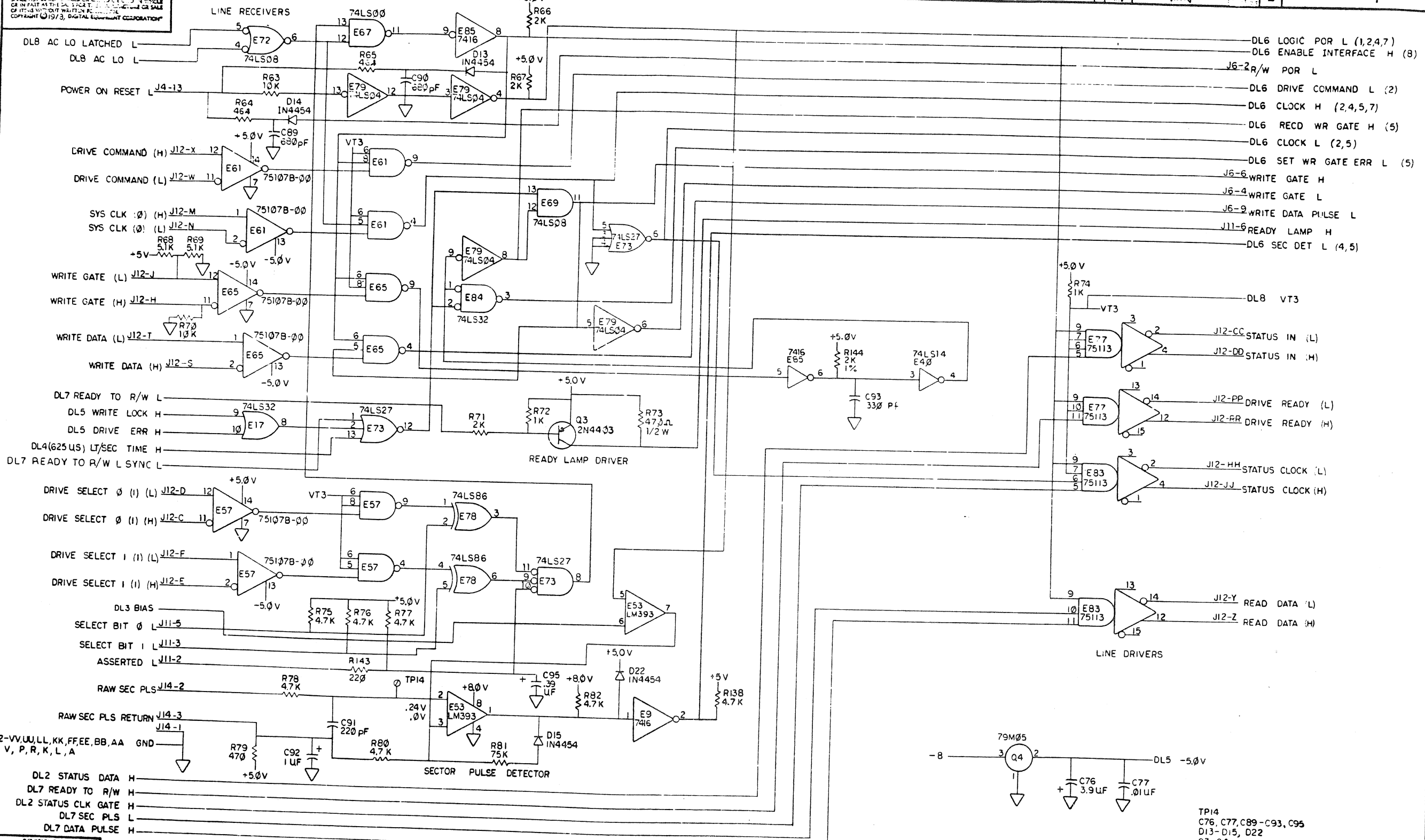


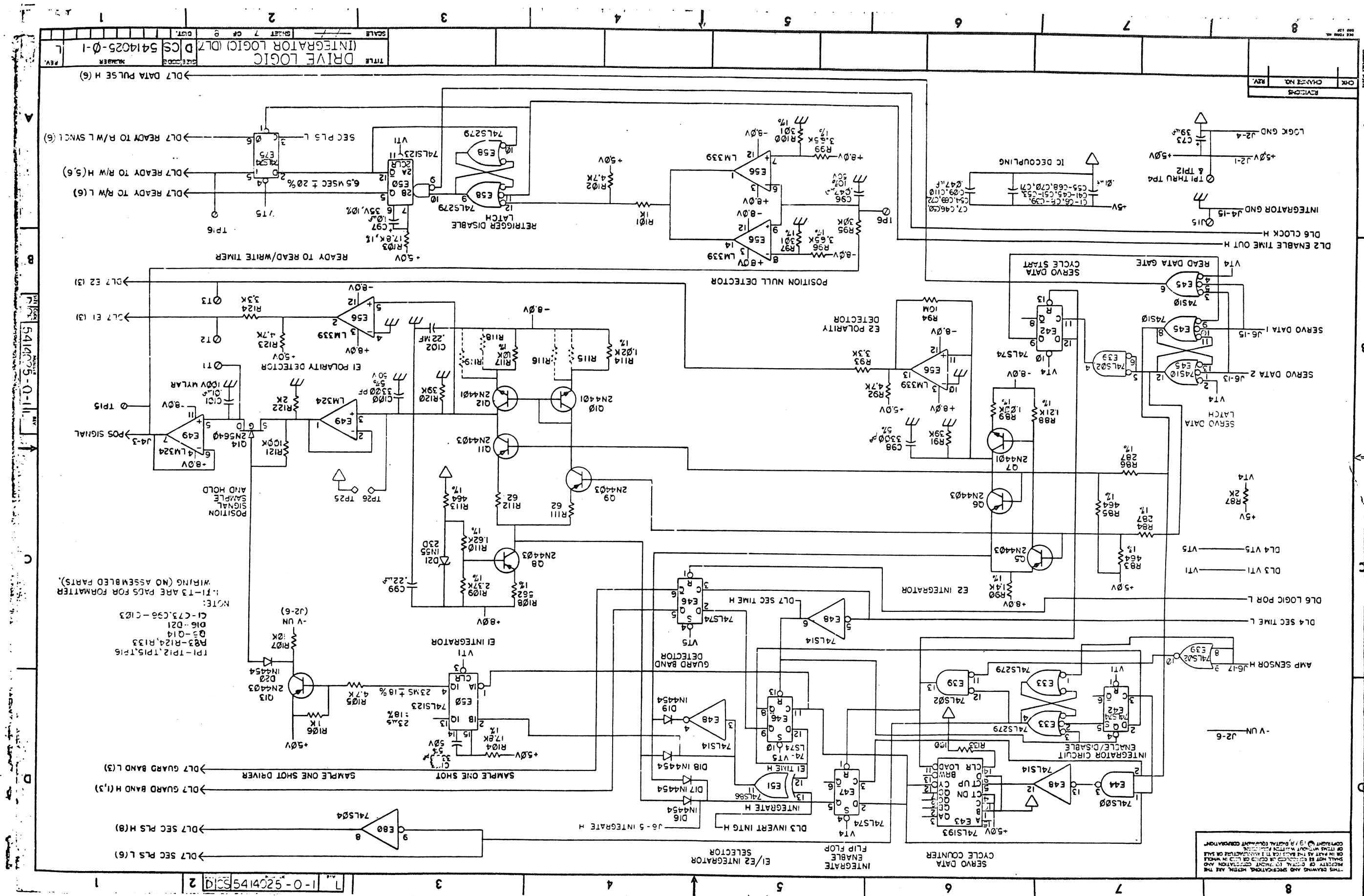


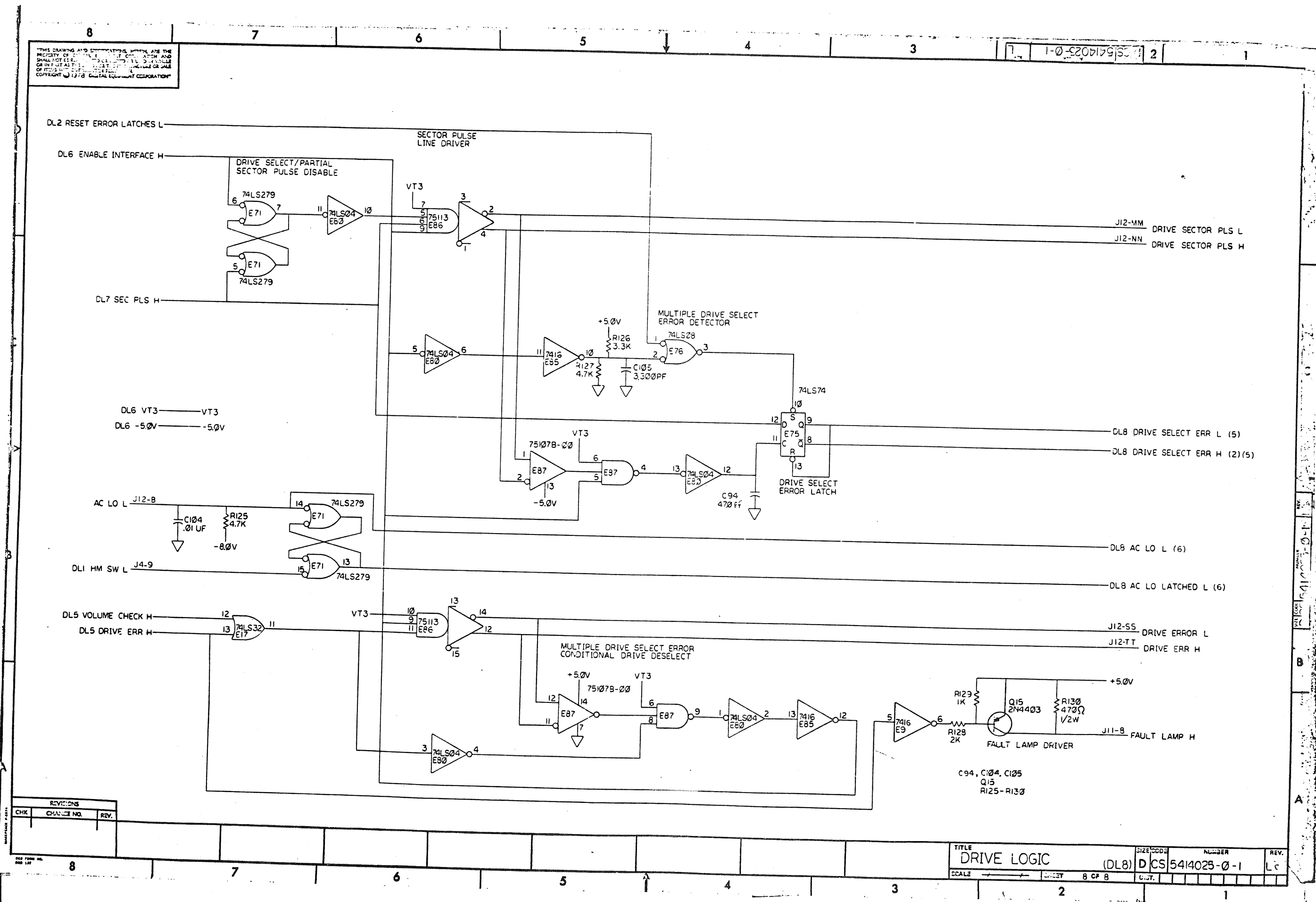




THIS DRAWING AND SPECIFICATIONS, HEREIN, ARE THE PROPERTY OF DIGITAL EQUIPMENT CORPORATION AND SHALL NOT BE REPRODUCED OR TRANSMITTED IN ANY FORM OR BY ANY MEANS, ELECTRONIC OR MECHANICAL, INCLUDING PHOTOCOPYING, RECORDING, OR BY ANY INFORMATION STORAGE AND RETRIEVAL SYSTEM, WITHOUT PERMISSION IN WRITING FROM DIGITAL EQUIPMENT CORPORATION.







LINE ITEM	DOCUMENT NUMBER	PART NUMBER	DESCRIPTION	00
1	D-AD-7012111-0-0	7012111-00	BEZEL ASSY	1
2	D-AD-7016991-0-0	7016991-00	COVER, SWITCH ASSY.	1
3	E-AD-7012114-0-0	7012114-00	DISK MOTOR ASSY	1
4	E-AD-7012115-0-0	7012115-00	FRONT COVER ASSY	1
5	E-AD-7012116-0-0	7012116-00	MAIN CHASSIS ASSY	1
6	D-AD-7012117-0-0	7012117-00	POSITIONER ASSY	1
7	D-AD-7015124-0-0	7015124-00	RL02 R/W BOX ASSY	1
8	D-AD-7015125-0-0	7015125-00	RL02 REAR COVER ASSY	1
9	D-AD-7015116-0-0	7015116-00	SFINDLE ASSY	1
10		9006038-01	SCREW,FAN,FHIL 8-32X 7/16 SS	4
11	D-IA-7015637-0-0	7015637-00	RL02 DATA HEAD "A"UP	1
12	B-AD-7012128-0-0	7012128-00	ACCESS COVER ASSEMBLY	1
13	D-AD-7012130-0-0	7012130-00	POWER PANEL ASSEMBLY	1
14	B-IA-7012139-0-0	7012139-0F	INTERCONNECT CABLE	2
15	B-IA-7014262-0-0	7014262-00	INTERCONNECT CABLE ASSEMBLY	1
16	C-IA-7012140-0-0	7012140-00	POWER HARNESS DC	1
17	B-IA-7012107-0-0	7012107-3D	INTERCONNECT CABLE	1
18	D-MD-7415094-0-0	7415094-00	REAR COVER	1
19	C-MD-7415101-0-0	7415101-00	SPRING, PLENUM COVER	2
20	C-MD-7415297-0-0	7415297-00	FILTER,FAD	1
21	C-MD-7415303-0-0	7415303-00	COVER AC SERV0	1
22	C-MD-7416335-0-0	7416335-00	CABLE RETAINER	1
23	D-MD-7417450-0-0	7417450-00	HATCH	1
24	C-MD-7417454-0-0	7417454-00	BRACKET PLENUM	2
25	C-MD-7417455-0-0	7417455-00	LATCH PLENUM	2
26	D-UA-5411848-0-0	5411848-00	ETCH BRD 54-11848	1
27	D-UA-5413534-0-0	5413534-00	DC SERV0 + POWER SUPPLY (RL02)	1
28		9006024-01	SCREW,FAN,FHIL 6-32X 1/2 SS	2
29	D-AD-7012137-0-0	7012137-00	TRANSDUCER ASSY	1
30		1213097-00	FILTER,AIR,HEFA,33CFM	1

[illegible]

THIS DRAWING AND SPECIFICATIONS HEREIN, ARE THE PROPERTY OF DIGITAL EQUIPMENT CORPORATION AND SHALL NOT BE REPRODUCED OR COPIED OR USED IN PART AS THE BASIS FOR THE MANUFACTURE OR SALE OF ITEMS WITHOUT WRITTEN PERMISSION. COPYRIGHT (C) 1980, DIGITAL EQUIPMENT CORPORATION.

P A R T S L I S T

LINE	ITEM	DOCUMENT NUMBER	PART NUMBER	DESCRIPTION	QUANTITY PER VARIATION 00
31	31		1213369-00	BELT,WOVEN,ENDLESS,375WX27.148LG	1
32	32		1213686-01	MOUNTING RAIL FOR 12-13686-00	1
33	33		1214330-00	SPRING,EXTENSION,2.5LGX.360D	1
34	34		9006022-01	SCREW,PAN,PHIL 6-32X 3/8 SS	2
35	35		9006035-01	SCREW,PAN,PHIL 8-32X 1/4 SS	6
36	36		9006037-01	SCREW,PAN,PHIL 8-32X 3/8 SS	13
37	37		9006039-01	SCREW,PAN,PHIL 8-32X 1/2 SS	12
38	38		9006633-00	WASHER,LOCK,INT,.2800D X .146ID	4
39	39		9006634-00	WASHER,LOCK,INT,.2300D X .172ID	15
40	40		9006636-00	WASHER,LOCK,INT,.3800D X .200ID	3
41	41		9007079-00	CLAMP, CABLE, SCREW MNT, 1/8"	4
42	42		9008955-01	SCREW,PAN,PHIL 10-32X 15/16SS	3
43	43	D-IA-7015637-0-0	7015637-01	RL02 DATA HEAD "A" DN	1
44	44		9009884-00	WASHER, FLAT, DELRIN .62 OD X.31	4
45	45		9009885-00	WASHER, SPRING	2
46	46	B-MD-7420084-0-0	7420084-00	SHIM, LATCH	A/R
47	47	C-MD-7416865-0-0	7416865-00	BRACKET LATCH	1
48	48	D-MD-7420826-0-0	7420826-00	COVER, DC SERVO BOARD	1
49	49		9006040-01	SCREW,PAN,PHIL 8-32X 5/8 SS	2
50	50		9006653-00	WASHER, FLAT, .375 O.D. X .156 I	3
51	51		1214359-00	WASHER,FLAT,S/S .169ID X .620D X	2
52	52		9006660-00	WASHER, FLAT, .375 O.D. X .187 I	11
53	53		9009759-00	SCREW,FLAT,PHIL, 8-32X 3/8	2
54	54		9006454-00	RIVET, BLIND, .156 DIA X .254 LG	10
55	55	B-MD-7420084-0-0	7420084-01	SHIM LATCH	A/R
56	56		3700406-00	INSTR PKG DISK RL01 DRIVE	1
57	57		9007649-00	WASHER, LOCK, EXTERNAL TOOTH #6	5
58	58		9006021-01	SCREW,PAN,PHIL 6-32X 5/16 SS	4
59	59		9008072-00	WASHER, LOCK, EXTERNAL TOOTH #8	21
60	60		9009974-00	WASHER, FLAT, METAL,.62 O.D. X .	2
61	61		3613209-03	LABEL,ELECTRICAL DATA VARIATIO	1
62	62	D-MD-7420068-0-0	7420068-00	SHIELD POSITIONER	1
63	63		3614783-00	LABEL,ADH BACK "DANGER HIGH VOLT	1
64	64	A-DC-7416197-0-0	7416197-02	LABEL, UL	1
65	65		3613211-01	DECAL,CLEAR PREPRINTED CSA 1-1/4	1
66	66		3615687-00	LABEL,ADHESIVE BACK FOR RL02	1
67	67		3615393-05	LABEL,RUB-ON,RL02	1
68	68		3618098-01	LABEL,ATTENTION SHIPPING HDW	1
69	69		9006418-01	SCREW,TAPPING,TYPE TT,PAN ,PHIL,	2
70	70	B-MD-7422834-0-0	7422834-00	INSULATOR,HEAD CABLE	1
71	71		9009023-00	WASHER,LOCK,INT,.3300D X .172ID	2
72	72	C-IA-7017608-0-0	7017608-00	*** THIS ITEM IS NOT USED ***	-
73	73	B-IA-7017609-0-0	7017609-00	*** THIS ITEM IS NOT USED ***	-

D	I	G	I	T	A	L	TITLE	SECTION A OF A	SIZE	CODE	DOCUMENT NUMBER	REV
							RL02 DISK DRIVE ASSEMBLY				RL02-0-DBP	K

QUANTITY PER VARIATION

DESCRIPTION

PART NUMBER

LINE ITEM DOCUMENT NUMBER

00

1	1	9006070-01	SCREW,PAN,PHIL 10-32X 5/16 SS	4
2	2	7416326-00	CHASSIS	1
3	3	9006028-01	SCREW,PAN,PHIL 6-32X1 SS	1
4	4	7012127-00	CHASSIS ASSY	1
5	5	9008072-00	WASHER, LOCK, EXTERNAL 100TH #8	4
6	6	1210430-00	BRACKET,CAPACITOR,2"	1
7	7	1210431-00	BRACKET,CAPACITOR,3-1/16"	1
8	8	1213156-01	BRACKET,CAPACITOR,WRAF-AROUND	1
9	9	9007016-00	GROMMET, RUBBER	1
10	10	1213683-00	BOOT,CAPACITOR,RUBBER	1
11	11	9007113-00	*** THIS ITEM IS NOT USED ***	-
12	12	9009768-01	BUSHING,STRAIN RELIEF .280-.393W	1
13	13	9007082-00	CLAMP,CABLE,SCREW MID. 5/16"	3
14	14	9009800-01	SCREW,PAN,PHIL1/8 SELF-	4
15	15	9009059-01	TAPE,FOAM, 1/2W X 1/4TH W/ ADH	12
16	16	9006020-01	SCREW,PAN,PHIL 6-32X 1/4 SS	3
17	17	9006023-01	SCREW,PAN,PHIL 6-32X 7/16 SS	4
18	18	9006036-01	SCREW,PAN,PHIL 8-32X 5/16 SS	3
19	19	9006027-01	SCREW,PAN,PHIL 6-32X 7/8 SS	1
20	20	1013102-00	10 MFD 370VAC 6% PAPER/OIL	1
21	21	7012108-00	POWER PANEL HARNESS	1
22	22	1215360-00	FILTER,LINE,115/250V,47-400HZ, F	1
23	23	9006633-00	WASHER,LOCK,INT, .2800D X .146ID	11
24	24	1216827-00	CKT BKR 2.5 A 250V 2P MAGNETIC	1
25	25	1209403-01	FAN,115CFM,SLEEVE BRNG	1
26	26	7012110-00	HARNESS AC-1B	1
27	27	1210263-00	GUARD,FINGER 4.125 X 4.125 MTG H	1
28	28	1613897-00	XFRM P=AB S=11.566A	1
29	29	1110051-00	DM 16 ASSY@200V & 25A #990-3	1
30	30	1013530-00	66,000 MFD 30V +75-10% AL EL	1

REVISION HISTORY

BASIC PART NO: 0RLO1

ENG	ECD NUMBER	REV	SECTION A OF A	DRN	D. MELCHOIR	DATE: 12-AUG-76	TITLE	PARTS LIST
KG	7012130-CX010	F	SECTION, VARIATION INDEX	CHK'D:	G. SCHNEIDER	DATE: 24-AUG-77	POWER PANEL ASSEMBLY	
KG	RL02-CX008	R	LAJ 00					
KG	7012130-CX011	S						
MZ	RL02-CX010	T						
KG	7012130-CX012	U						
IM	7012130-CX013	V						
EDJ					RESP,ENG.: P. ARNOLD	DATE: 30-AUG-77	DOCUMENT NUMBER	
CEJ					MFG,ENG.: B. RYLANDER	DATE: 30-AUG-77	SIZE:CODE: NUMBER	REV
CFJ					ASSEMBLY NUMBER:	TOP DOCUMENT NUMBER:	FILE NAME:	EDIT #
					D-AD-7012130-0-0	# B-DD-RL02-0	Z0849V.FLS	17

THIS DRAWING AND SPECIFICATIONS HEREIN, ARE THE PROPERTY OF DIGITAL EQUIPMENT CORPORATION AND SHALL NOT BE REPRODUCED OR COPIED OR USED IN WHOLE OR IN PART AS THE BASIS FOR THE MANUFACTURE OR SALE OF ITEMS WITHOUT WRITTEN PERMISSION.

COPYRIGHT (C) 1980, DIGITAL EQUIPMENT CORPORATION.

LINE	ITEM	DOCUMENT NUMBER	PART NUMBER	DESCRIPTION	QUANTITY PER VARIATION 00
31	31		1013531-00	20,000 MFD 40V +75-10% AL EL	1
32	32	B-IA-7012109-0-0	7012109-00	POWER HARNESS	1
33	33		9006560-00	NUT,KEP . 6-32 X5/16AF	6
34	34	C-IA-7012142-0-0	7012142-00	CABLE	1
35	35	B-IA-7012125-0-0	7012125-0E	INTERCONNECT CABLE	1
36	36	B-IA-7012125-0-0	7012125-0B	TB INTERCONNECTOR HARNESS	1
37	37		9006653-00	WASHER, FLAT, .375 O.D. X .156 I	7
38	38		9009800-06	SCREW,PAN,PHILLIPS, 6X.38	3
39	39		9006635-00	WASHER,LOCK,INT,.3100D X .200ID	4
40	40		9007649-00	WASHER, LOCK, EXTERNAL TOOTH #6	8
41	41		9006021-01	SCREW,PAN,PHIL 6-32X 5/16 SS	4
42	42		1211591-35	CONN,ZIF 40PIN RCPT ASSY	2
43	43		1211591-38	CONN,ZIF 40PIN RCPT,SWAP IN GU	4
44	44		9008301-01	SCREW,PAN,PHIL 4-40X 1/4 SS	4
45	45	B-IA-7017609-0-0	7017609-00	GROUND HARNESS	1
46	46	C-IA-7017608-0-0	7017608-00	GROUND HARNESS	1
47	47		9009255-00	LABEL, POWER SUPPLY, 2-15/16 " L	1
48	48		3612680-00	DECAL, GROUND SIGN PER 3E6 *	2

D	I	G	I	T	A	L	TITLE	SECTION A OF A	SIZE	CODE	DOCUMENT NUMBER	REV
							POWER PANEL ASSEMBLY		K	PL	7012130-0-DBP	V

NOTE: 1. USE ITEM 15 (SHOULDER WASHER) IN PLACE OF ITEM 12 (FLAT WASHER) WHEN ITEM 1 (RETAINER INTERLOCK) IS NOT MOUNTED THROUGH A SLIDE MOUNTING HOLE.
2. ASSEMBLE ITEM 9 (SPRING WASHER) WITH CONVEX TOWARD ITEM 3, 4 (PLATE, CAM).
3. CABINET EQUIPMENT MOUNTING HOLES ARE NUMBERED CONSECUTIVELY FROM THE BOTTOM UP. A SQUARE HOLE IS PROVIDED EVERY FIFTH MOUNTING HOLE TO AID IN COUNTING. WITH STABILIZER ARM PUSHED IN, THE INTERLOCK ROD HOLE PATTERN LINES UP WITH THE VERTICAL MOUNTING HOLES AND IS NUMBERED THE. ITEM 14 MUST ALWAYS BE USED ADJACENT TO ITEM 1. WHEN INSTALLING CABINET TRIM STRIPS, MAKE SURE THEY DON'T INTERFERE WITH INTERLOCK OPERATION.

LEGEND

PART NO.	VARIATION
7013688-0	LEFT HAND
7013688-1	RIGHT HAND

INSTRUCTIONS
1. THE SYSTEM DOCUMENTATION WILL SPECIFY THE INTERLOCK LOCATION AND ASSEMBLY BY LETTER AND NUMBER CODE.
2A. THE FIRST LETTER OF THE CODE SPECIFIES THE DIRECTION IN WHICH THE CHURCH KEY ASSEMBLY MUST BE INSTALLED.
DOWN.
B. THE SECOND LETTER (FAV) SPECIFIES WHICH OF THE TWO CAM PLATE NOTCHES ENGAGES WITH THE CHURCHKEY ASSEMBLY. IF NO LETTER APPEARS, WE CALL THIS THE NORMAL ASSEMBLY POSITION AND USE THE LOWER NOTCH. IF THE LEFT APPEARS, WE CALL THIS THE SPECIAL ASSEMBLY POSITION AND USE THE UPPER NOTCH.
C. THE NUMBER AT THE END OF THE INSTALLATION CODE SPECIFIES THE CABINET MOUNTING HOLE FOR THE ITEM 1 (INTERLOCK RETAINER). ALL OTHER PARTS OF THE ASSEMBLY ARE REFERENCED FROM THIS HOLE USING THE CHART BELOW.

DIRECTION/NOTCH	LOCATION OF TOP MOUNTING STUD	OUTRIGGER: LOCATION OF TOP MOUNTING STUD
U	X + 4	X
D	X + 6	X + 3
DS	X + 2	X + 3

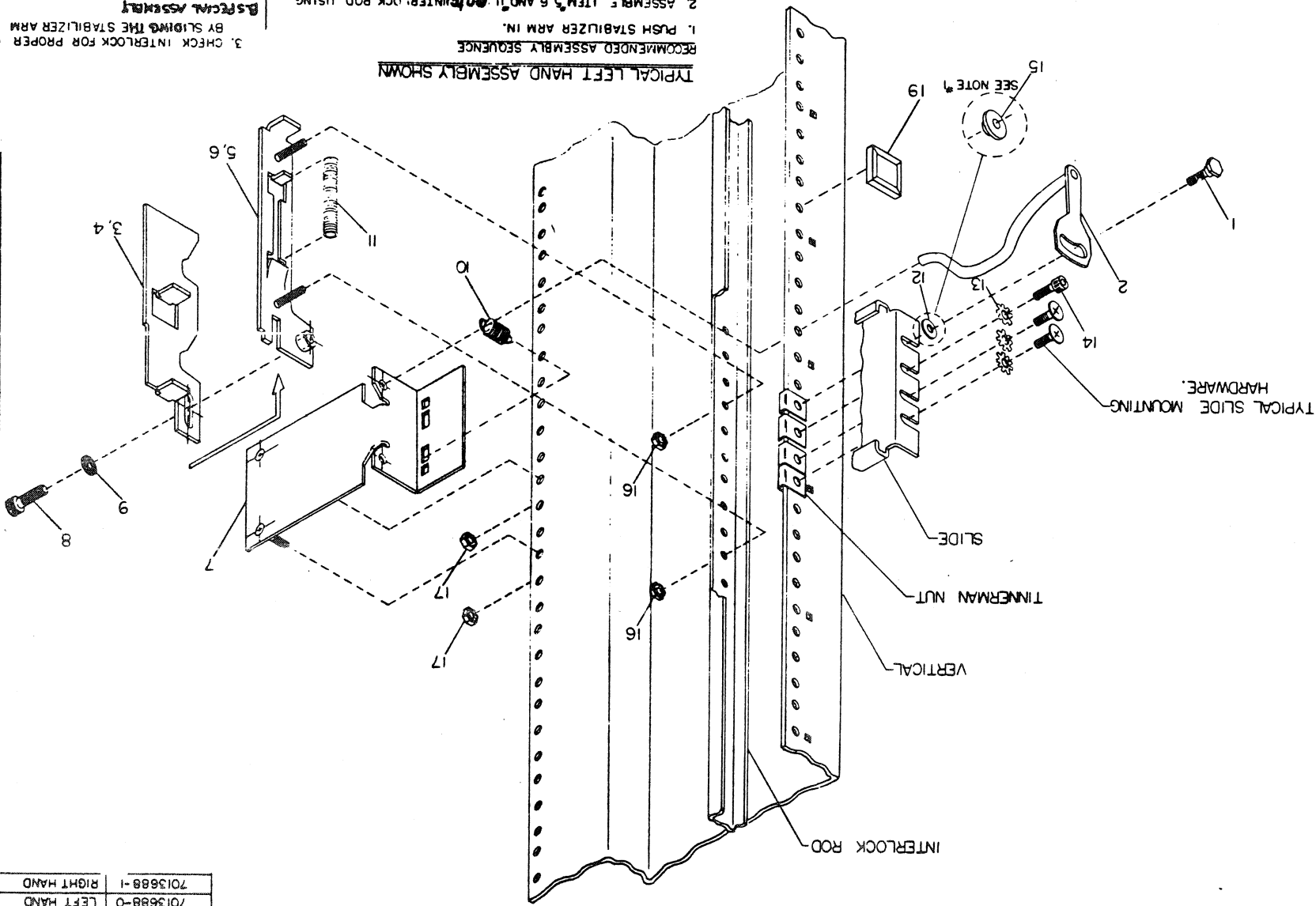
NOTE: 'X' IS THE SPECIFIED INTERLOCK RETAINER LOCATION.

INTERLOCK KIT (MARK III)

ITEM	DESCRIPTION	QTY
1	INTERLOCK RETAINER	1
2	SPRING WASHER	1
3	CABINET EQUIPMENT MOUNTING HOLE	1
4	PLATE, CAM	1
5	INTERLOCK ROD	1
6	INNERMAN NUT	1
7	SLIDE	1
8	VERTICAL	1
9	SPRING WASHER	1
10	CHURCH KEY ASSEMBLY	1
11	CHURCH KEY ASSEMBLY	1
12	FLAT WASHER	1
13	FLAT WASHER	1
14	FLAT WASHER	1
15	SHOULDER WASHER	1
16	INNERMAN NUT	1
17	SLIDE	1
18	VERTICAL	1
19	INTERLOCK RETAINER	1

CAUTION: OFF PRINT PARTS LIST
A-PL-7013688-0-0

1. INSTALL ITEM 1 AND 2 WITHOUT SLIDE.
2. ADJUST INTERLOCK BY LOOSENING ITEM 3.
3. CHECK INTERLOCK FOR PROPER OPERATION BY SLIDING THE STABILIZER ARM IN AND OUT.
4. MOUNT SLIDE USING ITEMS 1, 2, 3, 4 AND TYPICAL SLIDE MOUNTING HARDWARE.
5. CHECK INTERLOCK FOR PROPER OPERATION BY SLIDING THE STABILIZER ARM IN AND OUT.
6. BOTH SPECIAL AND NORMAL ASSEMBLIES—INSTALL ITEMS 19, ONE ON EACH VERTICAL MOUNTING RAIL (BOTH SIDES OF EQUIPMENT).
7. AT THIS POINT IN THE ASSEMBLY, PROCEDURES FOR NORMAL ASSEMBLY AND SPECIAL ASSEMBLY DIFFER.
8. MOUNT SLIDE USING ITEMS 1, 2, 3, 4 AND TYPICAL SLIDE MOUNTING HARDWARE.
9. ADJUST INTERLOCK BY LOOSENING ITEM 3, ALLOWING ITEMS 19 MUST NOT INTERFERE WITH ITEM 2 (ASSEMBLY, CHURCHKEY) OR TRIM STRIPS.
10. TIGHTEN ITEM 9 ONLY AFTER DEPRESSING ITEM 3, 4 AGAINST SPRING AS FAR AS POSSIBLE.
11. ASSEMBLY ITEM 5, 6 USING ITEMS 8 AND 9.
12. ASSEMBLY ITEM 5, 6 AND 11 ON INTERLOCK ROD USING ITEMS 16.
13. HOOK ITEM 10 INTO ITEM 7, USE UPPER SLOT FOR 'U' FOR 'D' ASSEMBLY.
14. INSTALL ITEM 7 ONTO CABINET VERTICAL USING ITEM 12, TORQUE TO 80 MAX INCH POUNDS.
15. INSTALL ITEM 2 REMEMBERING TO PASS THROUGH ITEM 10 BEFORE ENGAGING ITEM 7.
16. AT THIS POINT IN THE ASSEMBLY, PROCEDURES FOR NORMAL ASSEMBLY AND SPECIAL ASSEMBLY DIFFER.
17. MOUNT SLIDE USING ITEMS 1, 2, 3, 4 AND TYPICAL SLIDE MOUNTING HARDWARE.
18. ADJUST INTERLOCK BY LOOSENING ITEM 3, ALLOWING ITEMS 19 MUST NOT INTERFERE WITH ITEM 2 (ASSEMBLY, CHURCHKEY) OR TRIM STRIPS.
19. TIGHTEN ITEM 9 ONLY AFTER DEPRESSING ITEM 3, 4 AGAINST SPRING AS FAR AS POSSIBLE.
20. HOOK ITEM 10 INTO ITEM 7, USE UPPER SLOT FOR 'U' FOR 'D' ASSEMBLY.
21. INSTALL ITEM 7 ONTO CABINET VERTICAL USING ITEM 12, TORQUE TO 80 MAX INCH POUNDS.
22. INSTALL ITEM 2 REMEMBERING TO PASS THROUGH ITEM 10 BEFORE ENGAGING ITEM 7.
23. AT THIS POINT IN THE ASSEMBLY, PROCEDURES FOR NORMAL ASSEMBLY AND SPECIAL ASSEMBLY DIFFER.
24. MOUNT SLIDE USING ITEMS 1, 2, 3, 4 AND TYPICAL SLIDE MOUNTING HARDWARE.
25. ADJUST INTERLOCK BY LOOSENING ITEM 3, ALLOWING ITEMS 19 MUST NOT INTERFERE WITH ITEM 2 (ASSEMBLY, CHURCHKEY) OR TRIM STRIPS.
26. TIGHTEN ITEM 9 ONLY AFTER DEPRESSING ITEM 3, 4 AGAINST SPRING AS FAR AS POSSIBLE.
27. HOOK ITEM 10 INTO ITEM 7, USE UPPER SLOT FOR 'U' FOR 'D' ASSEMBLY.
28. INSTALL ITEM 7 ONTO CABINET VERTICAL USING ITEM 12, TORQUE TO 80 MAX INCH POUNDS.
29. INSTALL ITEM 2 REMEMBERING TO PASS THROUGH ITEM 10 BEFORE ENGAGING ITEM 7.
30. AT THIS POINT IN THE ASSEMBLY, PROCEDURES FOR NORMAL ASSEMBLY AND SPECIAL ASSEMBLY DIFFER.
31. MOUNT SLIDE USING ITEMS 1, 2, 3, 4 AND TYPICAL SLIDE MOUNTING HARDWARE.
32. ADJUST INTERLOCK BY LOOSENING ITEM 3, ALLOWING ITEMS 19 MUST NOT INTERFERE WITH ITEM 2 (ASSEMBLY, CHURCHKEY) OR TRIM STRIPS.
33. TIGHTEN ITEM 9 ONLY AFTER DEPRESSING ITEM 3, 4 AGAINST SPRING AS FAR AS POSSIBLE.
34. HOOK ITEM 10 INTO ITEM 7, USE UPPER SLOT FOR 'U' FOR 'D' ASSEMBLY.
35. INSTALL ITEM 7 ONTO CABINET VERTICAL USING ITEM 12, TORQUE TO 80 MAX INCH POUNDS.
36. INSTALL ITEM 2 REMEMBERING TO PASS THROUGH ITEM 10 BEFORE ENGAGING ITEM 7.
37. AT THIS POINT IN THE ASSEMBLY, PROCEDURES FOR NORMAL ASSEMBLY AND SPECIAL ASSEMBLY DIFFER.
38. MOUNT SLIDE USING ITEMS 1, 2, 3, 4 AND TYPICAL SLIDE MOUNTING HARDWARE.
39. ADJUST INTERLOCK BY LOOSENING ITEM 3, ALLOWING ITEMS 19 MUST NOT INTERFERE WITH ITEM 2 (ASSEMBLY, CHURCHKEY) OR TRIM STRIPS.
40. TIGHTEN ITEM 9 ONLY AFTER DEPRESSING ITEM 3, 4 AGAINST SPRING AS FAR AS POSSIBLE.
41. HOOK ITEM 10 INTO ITEM 7, USE UPPER SLOT FOR 'U' FOR 'D' ASSEMBLY.
42. INSTALL ITEM 7 ONTO CABINET VERTICAL USING ITEM 12, TORQUE TO 80 MAX INCH POUNDS.
43. INSTALL ITEM 2 REMEMBERING TO PASS THROUGH ITEM 10 BEFORE ENGAGING ITEM 7.
44. AT THIS POINT IN THE ASSEMBLY, PROCEDURES FOR NORMAL ASSEMBLY AND SPECIAL ASSEMBLY DIFFER.
45. MOUNT SLIDE USING ITEMS 1, 2, 3, 4 AND TYPICAL SLIDE MOUNTING HARDWARE.
46. ADJUST INTERLOCK BY LOOSENING ITEM 3, ALLOWING ITEMS 19 MUST NOT INTERFERE WITH ITEM 2 (ASSEMBLY, CHURCHKEY) OR TRIM STRIPS.
47. TIGHTEN ITEM 9 ONLY AFTER DEPRESSING ITEM 3, 4 AGAINST SPRING AS FAR AS POSSIBLE.
48. HOOK ITEM 10 INTO ITEM 7, USE UPPER SLOT FOR 'U' FOR 'D' ASSEMBLY.
49. INSTALL ITEM 7 ONTO CABINET VERTICAL USING ITEM 12, TORQUE TO 80 MAX INCH POUNDS.
50. INSTALL ITEM 2 REMEMBERING TO PASS THROUGH ITEM 10 BEFORE ENGAGING ITEM 7.
51. AT THIS POINT IN THE ASSEMBLY, PROCEDURES FOR NORMAL ASSEMBLY AND SPECIAL ASSEMBLY DIFFER.
52. MOUNT SLIDE USING ITEMS 1, 2, 3, 4 AND TYPICAL SLIDE MOUNTING HARDWARE.
53. ADJUST INTERLOCK BY LOOSENING ITEM 3, ALLOWING ITEMS 19 MUST NOT INTERFERE WITH ITEM 2 (ASSEMBLY, CHURCHKEY) OR TRIM STRIPS.
54. TIGHTEN ITEM 9 ONLY AFTER DEPRESSING ITEM 3, 4 AGAINST SPRING AS FAR AS POSSIBLE.
55. HOOK ITEM 10 INTO ITEM 7, USE UPPER SLOT FOR 'U' FOR 'D' ASSEMBLY.
56. INSTALL ITEM 7 ONTO CABINET VERTICAL USING ITEM 12, TORQUE TO 80 MAX INCH POUNDS.
57. INSTALL ITEM 2 REMEMBERING TO PASS THROUGH ITEM 10 BEFORE ENGAGING ITEM 7.
58. AT THIS POINT IN THE ASSEMBLY, PROCEDURES FOR NORMAL ASSEMBLY AND SPECIAL ASSEMBLY DIFFER.
59. MOUNT SLIDE USING ITEMS 1, 2, 3, 4 AND TYPICAL SLIDE MOUNTING HARDWARE.
60. ADJUST INTERLOCK BY LOOSENING ITEM 3, ALLOWING ITEMS 19 MUST NOT INTERFERE WITH ITEM 2 (ASSEMBLY, CHURCHKEY) OR TRIM STRIPS.
61. TIGHTEN ITEM 9 ONLY AFTER DEPRESSING ITEM 3, 4 AGAINST SPRING AS FAR AS POSSIBLE.
62. HOOK ITEM 10 INTO ITEM 7, USE UPPER SLOT FOR 'U' FOR 'D' ASSEMBLY.
63. INSTALL ITEM 7 ONTO CABINET VERTICAL USING ITEM 12, TORQUE TO 80 MAX INCH POUNDS.
64. INSTALL ITEM 2 REMEMBERING TO PASS THROUGH ITEM 10 BEFORE ENGAGING ITEM 7.
65. AT THIS POINT IN THE ASSEMBLY, PROCEDURES FOR NORMAL ASSEMBLY AND SPECIAL ASSEMBLY DIFFER.
66. MOUNT SLIDE USING ITEMS 1, 2, 3, 4 AND TYPICAL SLIDE MOUNTING HARDWARE.
67. ADJUST INTERLOCK BY LOOSENING ITEM 3, ALLOWING ITEMS 19 MUST NOT INTERFERE WITH ITEM 2 (ASSEMBLY, CHURCHKEY) OR TRIM STRIPS.
68. TIGHTEN ITEM 9 ONLY AFTER DEPRESSING ITEM 3, 4 AGAINST SPRING AS FAR AS POSSIBLE.
69. HOOK ITEM 10 INTO ITEM 7, USE UPPER SLOT FOR 'U' FOR 'D' ASSEMBLY.
70. INSTALL ITEM 7 ONTO CABINET VERTICAL USING ITEM 12, TORQUE TO 80 MAX INCH POUNDS.
71. INSTALL ITEM 2 REMEMBERING TO PASS THROUGH ITEM 10 BEFORE ENGAGING ITEM 7.
72. AT THIS POINT IN THE ASSEMBLY, PROCEDURES FOR NORMAL ASSEMBLY AND SPECIAL ASSEMBLY DIFFER.
73. MOUNT SLIDE USING ITEMS 1, 2, 3, 4 AND TYPICAL SLIDE MOUNTING HARDWARE.
74. ADJUST INTERLOCK BY LOOSENING ITEM 3, ALLOWING ITEMS 19 MUST NOT INTERFERE WITH ITEM 2 (ASSEMBLY, CHURCHKEY) OR TRIM STRIPS.
75. TIGHTEN ITEM 9 ONLY AFTER DEPRESSING ITEM 3, 4 AGAINST SPRING AS FAR AS POSSIBLE.
76. HOOK ITEM 10 INTO ITEM 7, USE UPPER SLOT FOR 'U' FOR 'D' ASSEMBLY.
77. INSTALL ITEM 7 ONTO CABINET VERTICAL USING ITEM 12, TORQUE TO 80 MAX INCH POUNDS.
78. INSTALL ITEM 2 REMEMBERING TO PASS THROUGH ITEM 10 BEFORE ENGAGING ITEM 7.
79. AT THIS POINT IN THE ASSEMBLY, PROCEDURES FOR NORMAL ASSEMBLY AND SPECIAL ASSEMBLY DIFFER.
80. MOUNT SLIDE USING ITEMS 1, 2, 3, 4 AND TYPICAL SLIDE MOUNTING HARDWARE.
81. ADJUST INTERLOCK BY LOOSENING ITEM 3, ALLOWING ITEMS 19 MUST NOT INTERFERE WITH ITEM 2 (ASSEMBLY, CHURCHKEY) OR TRIM STRIPS.
82. TIGHTEN ITEM 9 ONLY AFTER DEPRESSING ITEM 3, 4 AGAINST SPRING AS FAR AS POSSIBLE.
83. HOOK ITEM 10 INTO ITEM 7, USE UPPER SLOT FOR 'U' FOR 'D' ASSEMBLY.
84. INSTALL ITEM 7 ONTO CABINET VERTICAL USING ITEM 12, TORQUE TO 80 MAX INCH POUNDS.
85. INSTALL ITEM 2 REMEMBERING TO PASS THROUGH ITEM 10 BEFORE ENGAGING ITEM 7.
86. AT THIS POINT IN THE ASSEMBLY, PROCEDURES FOR NORMAL ASSEMBLY AND SPECIAL ASSEMBLY DIFFER.
87. MOUNT SLIDE USING ITEMS 1, 2, 3, 4 AND TYPICAL SLIDE MOUNTING HARDWARE.
88. ADJUST INTERLOCK BY LOOSENING ITEM 3, ALLOWING ITEMS 19 MUST NOT INTERFERE WITH ITEM 2 (ASSEMBLY, CHURCHKEY) OR TRIM STRIPS.
89. TIGHTEN ITEM 9 ONLY AFTER DEPRESSING ITEM 3, 4 AGAINST SPRING AS FAR AS POSSIBLE.
90. HOOK ITEM 10 INTO ITEM 7, USE UPPER SLOT FOR 'U' FOR 'D' ASSEMBLY.
91. INSTALL ITEM 7 ONTO CABINET VERTICAL USING ITEM 12, TORQUE TO 80 MAX INCH POUNDS.
92. INSTALL ITEM 2 REMEMBERING TO PASS THROUGH ITEM 10 BEFORE ENGAGING ITEM 7.
93. AT THIS POINT IN THE ASSEMBLY, PROCEDURES FOR NORMAL ASSEMBLY AND SPECIAL ASSEMBLY DIFFER.
94. MOUNT SLIDE USING ITEMS 1, 2, 3, 4 AND TYPICAL SLIDE MOUNTING HARDWARE.
95. ADJUST INTERLOCK BY LOOSENING ITEM 3, ALLOWING ITEMS 19 MUST NOT INTERFERE WITH ITEM 2 (ASSEMBLY, CHURCHKEY) OR TRIM STRIPS.
96. TIGHTEN ITEM 9 ONLY AFTER DEPRESSING ITEM 3, 4 AGAINST SPRING AS FAR AS POSSIBLE.
97. HOOK ITEM 10 INTO ITEM 7, USE UPPER SLOT FOR 'U' FOR 'D' ASSEMBLY.
98. INSTALL ITEM 7 ONTO CABINET VERTICAL USING ITEM 12, TORQUE TO 80 MAX INCH POUNDS.
99. INSTALL ITEM 2 REMEMBERING TO PASS THROUGH ITEM 10 BEFORE ENGAGING ITEM 7.
100. AT THIS POINT IN THE ASSEMBLY, PROCEDURES FOR NORMAL ASSEMBLY AND SPECIAL ASSEMBLY DIFFER.



TYPICAL LEFT HAND ASSEMBLY SHOWN