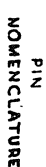


W1, W3 THRU W8, W19, W22, W23, W25, W26
W28, ARE OPTIONAL JUMPERS. DO NOT INSERT.



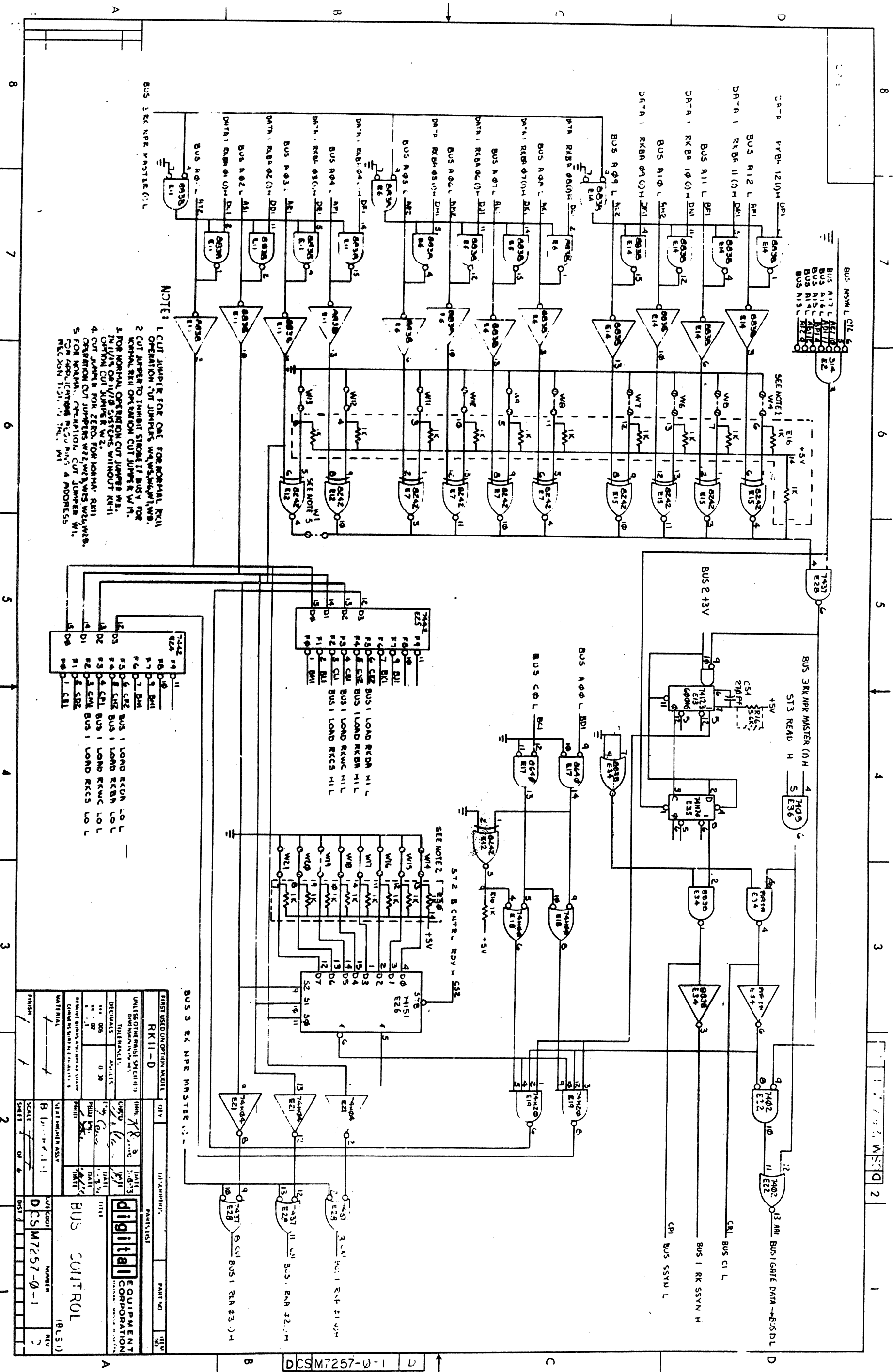
AA2, BA2 +5V
CA2, DA2
AC2, BC2, GND
CC2, DC2,
ATJ, BTJ
CTJ, DTJ

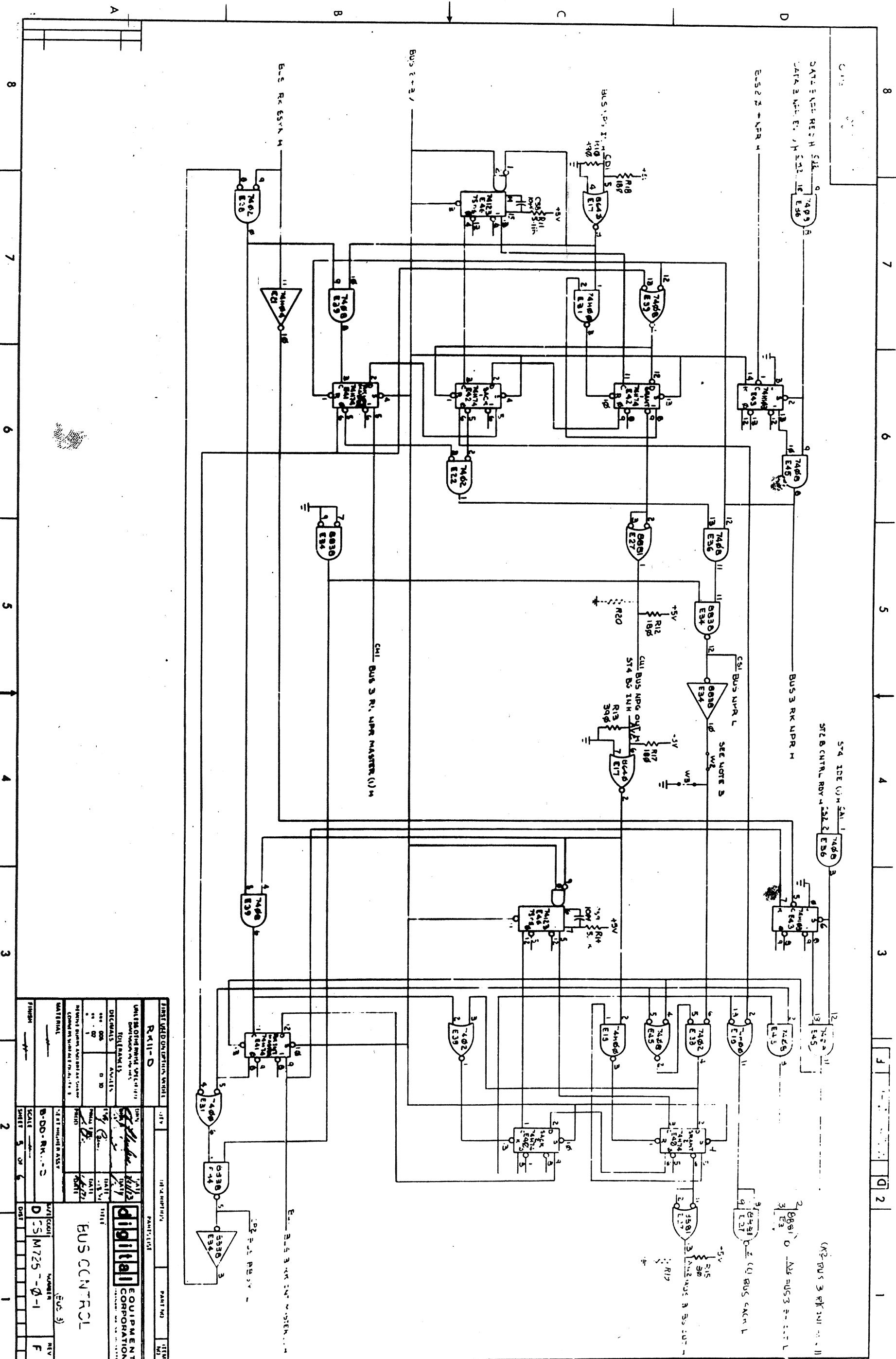
TP 1
TP 2

REF	REF	DESCRIPTION	PART NO	QTY	UNIT
REF	REF	XY-COORDINATE HOLE LOC.			
REF	REF	ASSY/DRILLING HOLE LAYOUT			
REF	REF	MODULE ECO HISTORY			
REF	REF	ETCHED CIRCUIT BOARD			
1	C53, C53	CAP 10 MMF 100V 5%	1000066	5	
2	C54	CAP 270 MMF 100V 5%	1000022	5	
3	C57, C60	CAP 330 MMF 100V 5%	1000023	7	
4	C56	CAP 1200 MMF 100V 5%	1000242	5	
49	C1 THRU C49	CAP 52MF 50V 20%	1010274-01	9	
4	C50 THRU C53	CAP 6.8 MFD 35V 10% TANT	1005306	10	
5	C61 THRU C65	CAP 6.8 MMF 100V 5%	1000005	11	
1	C55	CAP 27 MMF 100V 5%	1000179	12	
1	Q1	TRANS DEC 30098	1500310	13	
3	R2, R3, R4	RES 330 1/4 W 5%	1300295	14	
2	R10, R13	RES 390 1/4 W 5%	1300309	15	
1	R5	RES 287 1/8 W 1%	1305124	16	
4	R12, R15, R17, R3	RES 180 1/4 W 5%	1301322	17	
1	R16	RES 56K 1/4 W 5%	1301874	18	
1	R9	RES 47K 1/4 W 5%	1302177	19	
2	R11, R14	RES 511K 1/8 W 1%	1304854	20	
2	E1G, E30	RES 1K RESISTOR PACK	1300005-01	21	
1	E19	IC 74H20	1905635	22	
2	E22, E38	IC 7402	1902000-1	23	
3	E19, E31, E37	IC 74H00	1909056	24	
4	E40, E41, E42, E35	IC 74H74	1909637	25	
1	E2	IC 314	1909704	26	
4	E3, E4, E6, E27	IC 8881	1909705	27	
3	E7, E12, E15	IC 8242	1909712	28	
1	E21	IC 74H04	1909931	29	
1	E26	IC 74151	1909936	30	
2	E24, E25	IC 7442	1910046	31	
1	E28	IC 7437	1912091	32	
3	E36, E39, E45	IC 7408	1910155	33	
3	E29, E32, E43	IC 74H103	1910409	34	
2	E13, E46	IC 74123	1910436	35	
1	E17	IC 3540	1910000	36	
8	E15, E16, E19, E21, E29, E34	IC 8838	1911117-00	37	
15	W2, W9 THRU W18	INSULATED JUMPER	9009185	39	
8	W20, W21, W24, W27	EYELET	9006732	17	
2	TP1, TP2	SOLDER TERMINALS	9007791	41	
4		HANDLE (FLIP CHIP) MAGENTA	9008337-06	42	

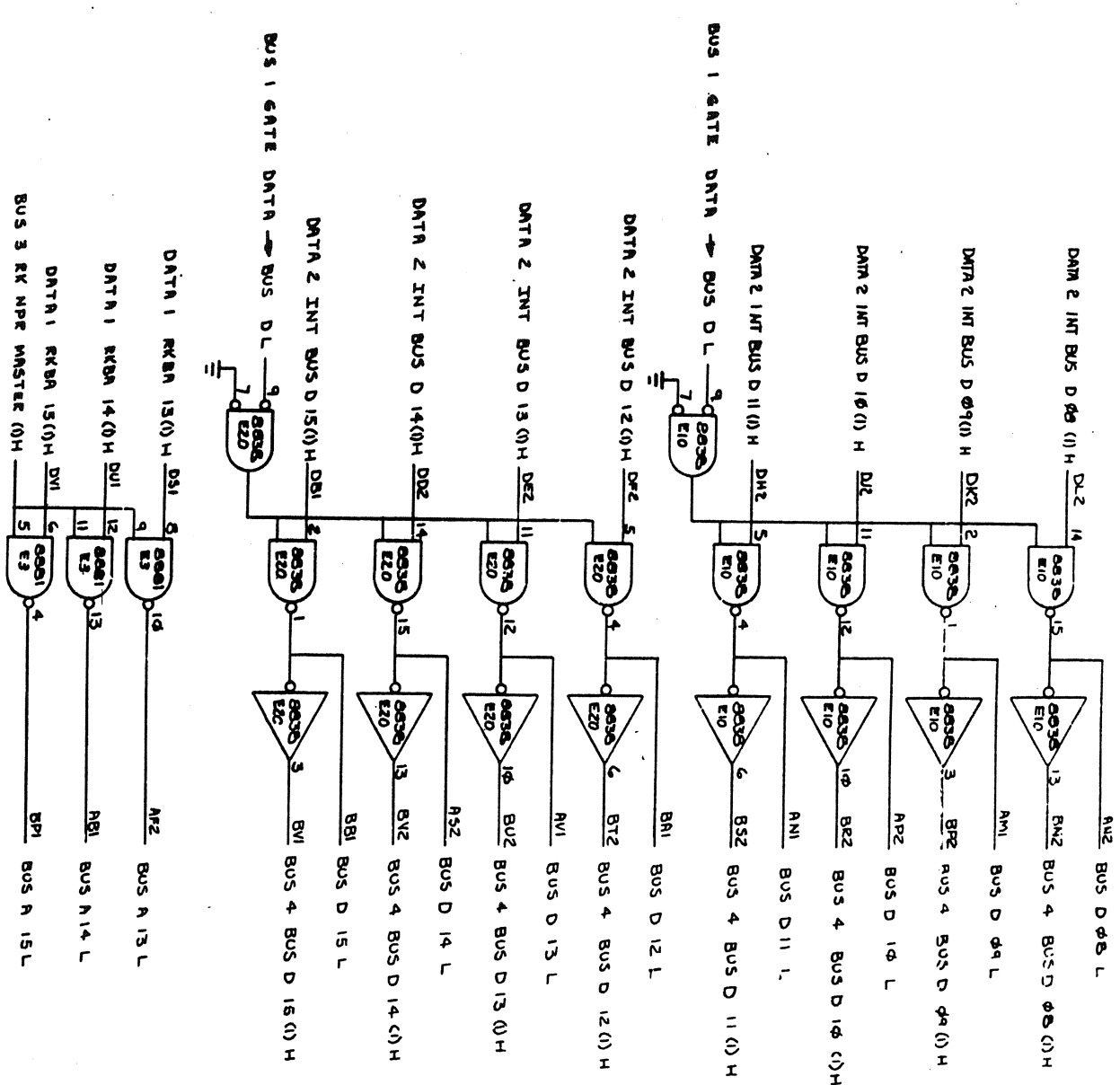
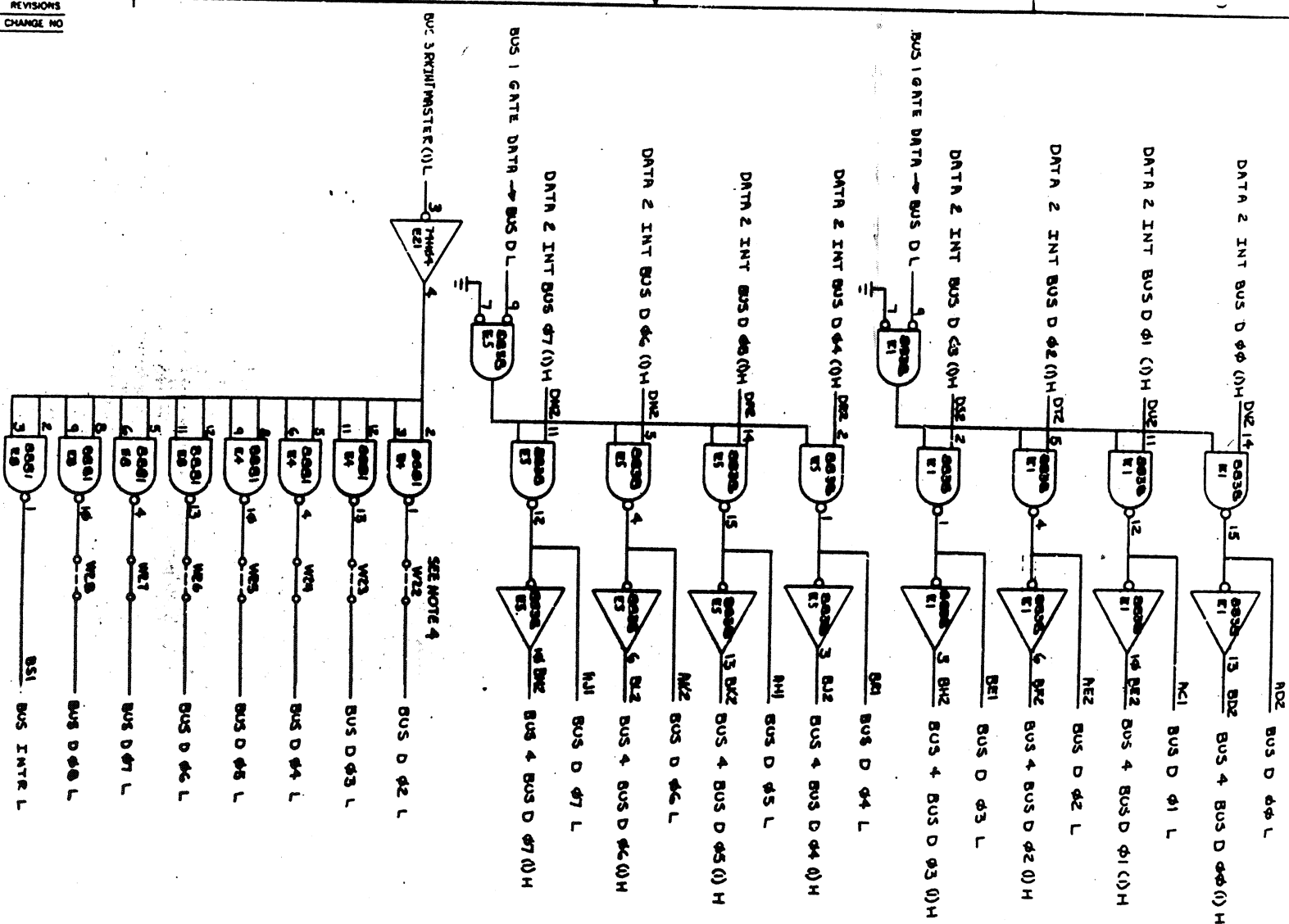
40

8% FBS.

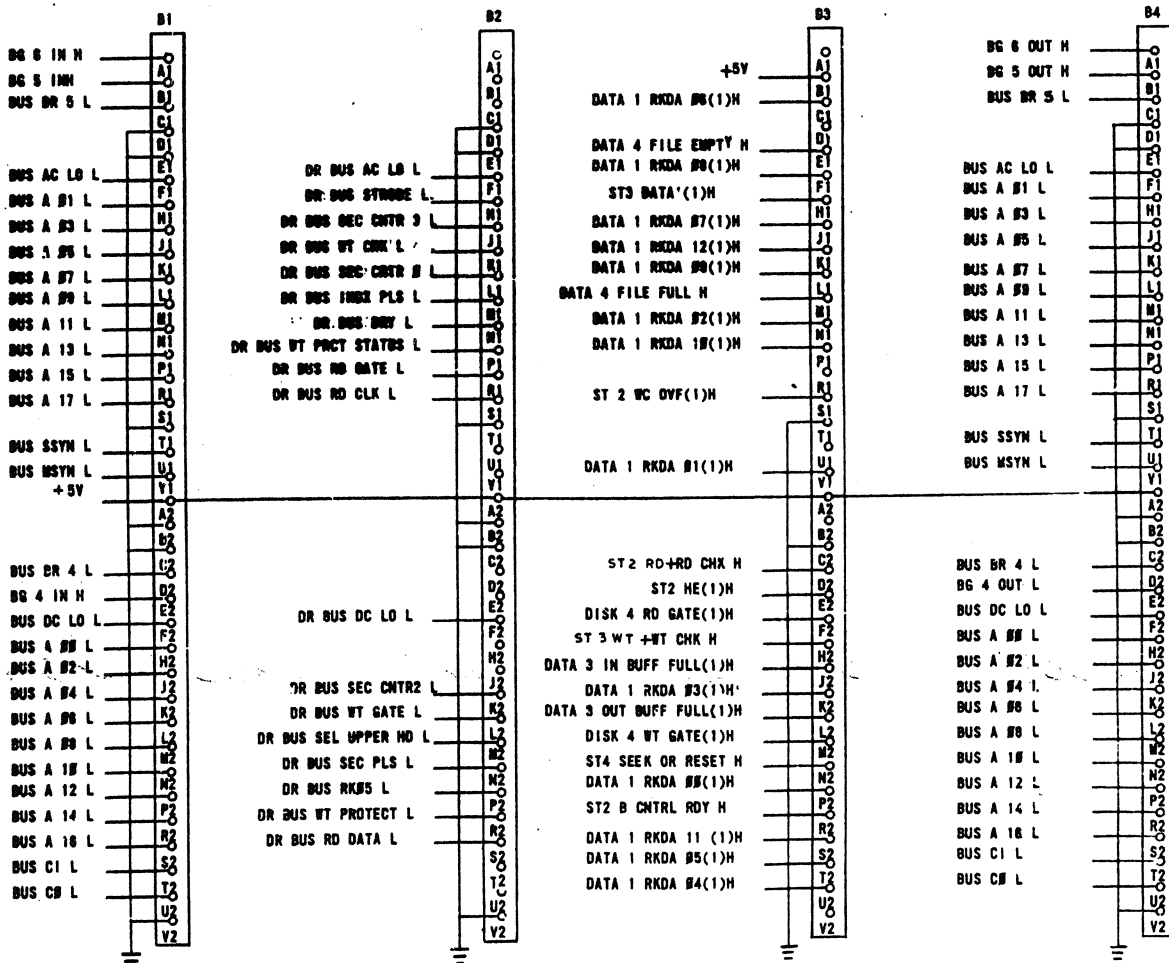
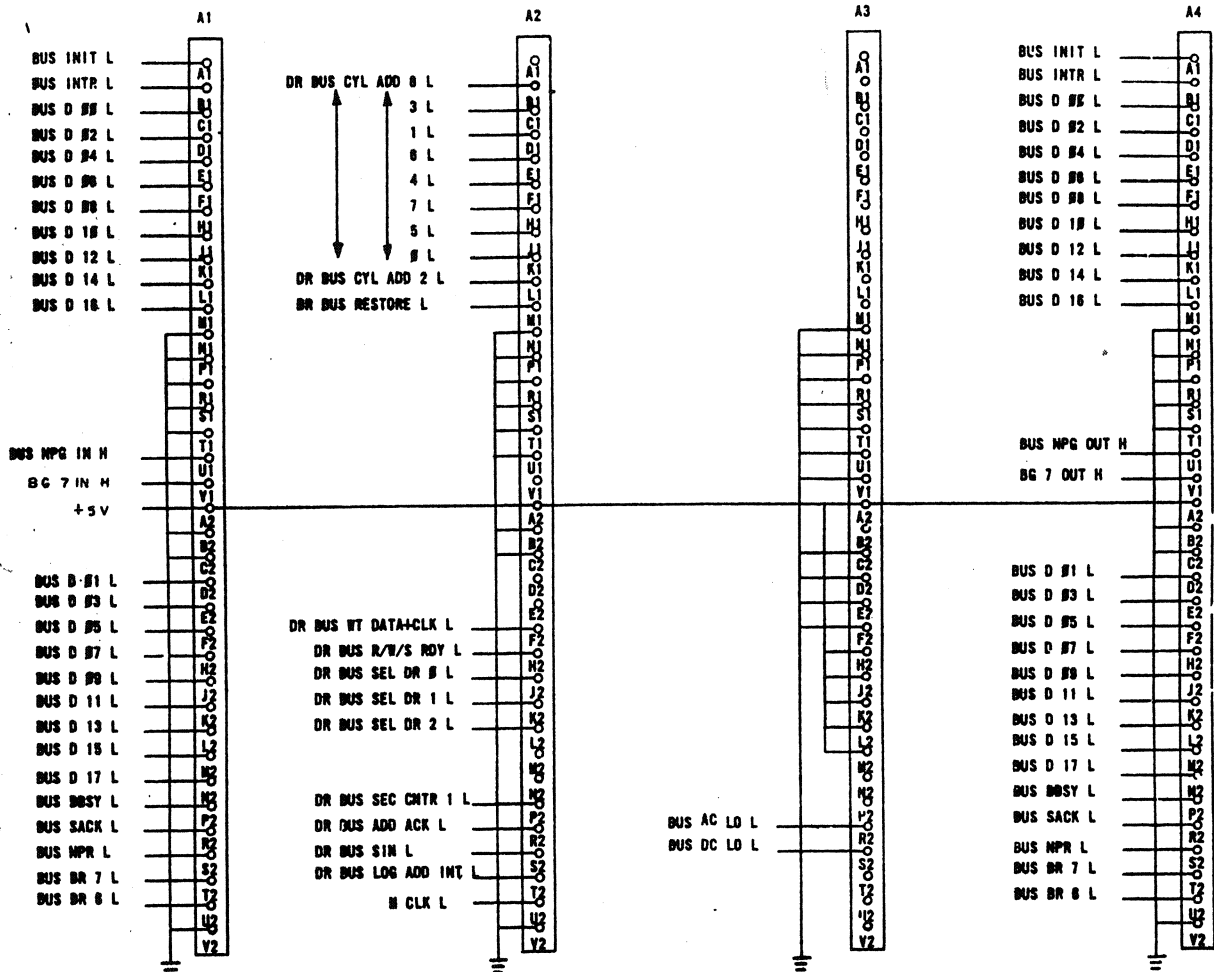


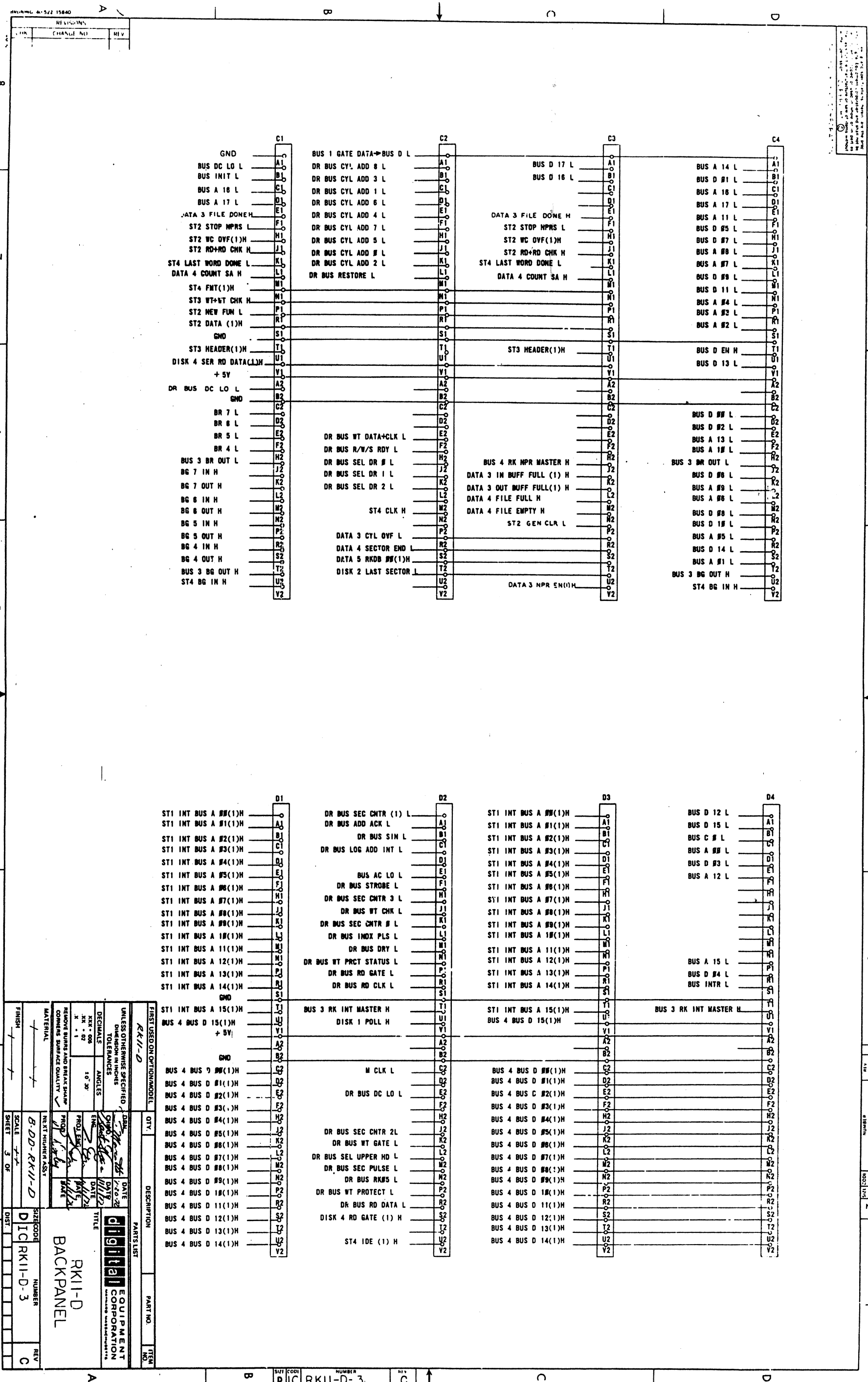


DCSM7257-Q-1

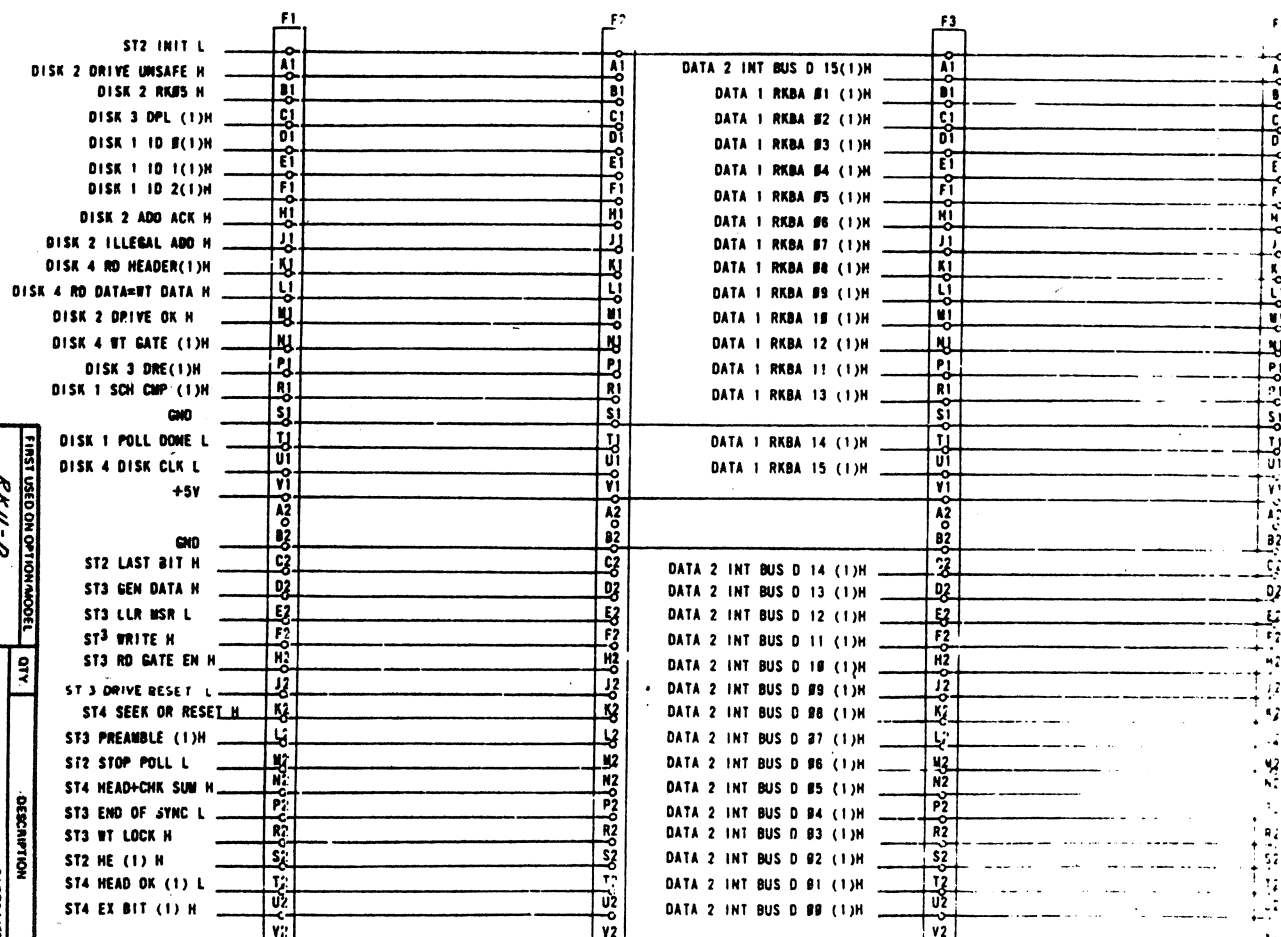
[illegible]

REVISIONS		
CHK	CHANGE NO.	REV

[illegible]



REVISIONS	
REV	DATE
1	10-20-72
PARTS LIST	
QTY	DESCRIPTION
1	BACKPANEL
UNLESS OTHERWISE SPECIFIED	
DIMENSIONS IN INCHES	
TOLERANCES	
DECIMALS	ANGLES
.0005	30°
MATERIAL	
NEXT NUMBER ASSY	
B.D.D.-RKII-D	
SCALE 1:1	
SHEET 3 OF 3	
DATE 10-20-72	
BY 10-20-72	
CHECKED 10-20-72	
APPROVED 10-20-72	
TITLE	
RKII-D	
BACKPANEL	
SIZE CODE	
D1C RKII-D-3	
NUMBER	
REV	
C	



SIZE	COD	NUMBER	REV
D	IC	RKII-D-3	A