

1. The first step is to identify the problem or question that needs to be solved. This involves understanding the context and the specific requirements of the task.

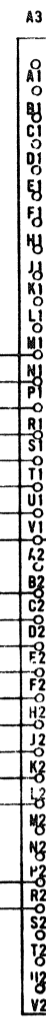
[illegible]



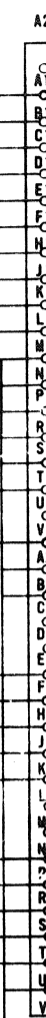
BUS INIT L
BUS INTR L
BUS D 02 L
BUS D 04 L
BUS D 06 L
BUS D 08 L
BUS D 10 L
BUS D 12 L
BUS D 14 L
BUS D 16 L

BUS NPG OUT H
BG 7 OUT H

BUS D 01 L
BUS D 03 L
BUS D 05 L
BUS D 07 L
BUS D 09 L
BUS D 11 L
BUS D 13 L
BUS D 15 L
BUS D 17 L
BUS D 19 L
BUS D 21 L
BUS D 23 L
BUS D 25 L
BUS D 27 L
BUS D 29 L
BUS D 31 L
BUS D 33 L
BUS D 35 L
BUS D 37 L
BUS D 39 L
BUS D 41 L
BUS D 43 L
BUS D 45 L
BUS D 47 L
BUS D 49 L
BUS D 51 L
BUS D 53 L
BUS D 55 L
BUS D 57 L



BUS AC LO L
BUS DC LO L



DR BUS CYL ADD 8 L
3 L
1 L
6 L
4 L
7 L
5 L
8 L
DR BUS CYL ADD 2 L
DR BUS RESTORE L

DR BUS WT DATA+CLK L
DR BUS R/W/S RDY L
DR BUS SEL DR 0 L
DR BUS SEL DR 1 L
DR BUS SEL DR 2 L

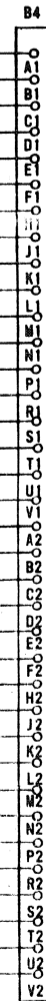
DR BUS SEC CNTR 1 L
DR BUS ADD ACK L
DR BUS SIN L
DR BUS LOG ADD INT
M CLK L



BUS INIT L
BUS INTR L
BUS D 02 L
BUS D 04 L
BUS D 06 L
BUS D 08 L
BUS D 10 L
BUS D 12 L
BUS D 14 L
BUS D 16 L

BUS NPG IN H
BG 7 IN H
+5V

BUS D 01 L
BUS D 03 L
BUS D 05 L
BUS D 07 L
BUS D 09 L
BUS D 11 L
BUS D 13 L
BUS D 15 L
BUS D 17 L
BUS D 19 L
BUS D 21 L
BUS D 23 L
BUS D 25 L
BUS D 27 L
BUS D 29 L
BUS D 31 L
BUS D 33 L
BUS D 35 L
BUS D 37 L
BUS D 39 L
BUS D 41 L
BUS D 43 L
BUS D 45 L
BUS D 47 L
BUS D 49 L
BUS D 51 L
BUS D 53 L
BUS D 55 L
BUS D 57 L

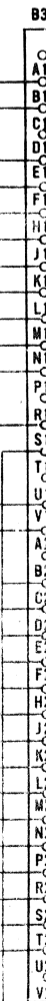


BG 6 OUT H
BG 5 OUT H
BUS BR 5 L

BUS AC LO L
BUS A 01 L
BUS A 03 L
BUS A 05 L
BUS A 07 L
BUS A 09 L
BUS A 11 L
BUS A 13 L
BUS A 15 L
BUS A 17 L

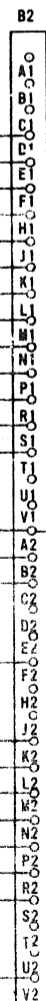
BUS SSYN L
BUS MSYN L

BUS BR 4 L
BG 4 OUT L
BUS DC LO L
BUS A 00 L
BUS A 02 L
BUS A 04 L
BUS A 06 L
BUS A 08 L
BUS A 10 L
BUS A 12 L
BUS A 14 L
BUS A 16 L
BUS C1 L
BUS C0 L



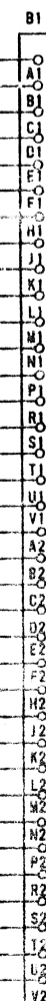
+5V
DATA 1 RKDA 06(1)H
DATA 4 FILE EMPTY H
DATA 1 RKDA 08(1)H
ST3 DATA 1(1)H
DATA 1 RKDA 07(1)H
DATA 1 RKDA 12(1)H
DATA 1 RKDA 09(1)H
DATA 4 FILE FULL H
DATA 1 RKDA 02(1)H
DATA 1 RKDA 10(1)H
ST 2 WC OV(1)H
DATA 1 RKDA 01(1)H

ST 2 RD+RD CHK H
ST 2 HE(1)H
DISK 4 RD GATE(1)H
ST 3 WT +WT CHK H
DATA 3 IN BUFF FULL(1)H
DATA 1 RKDA 03(1)H
DATA 3 OUT BUFF FULL(1)H
DISK 4 WT GATE(1)H
ST 4 SEEK OR RESET H
DATA 1 RKDA 00(1)H
ST 2 B CNTRL RDY H
DATA 1 RKDA 11(1)H
DATA 1 RKDA 05(1)H
DATA 1 RKDA 04(1)H



DR BUS AC LO L
DR BUS STROBE L
DR BUS SEC CNTR 3 L
DR BUS WT CHK L
DR BUS SEC CNTR 0 L
DR BUS INDX PLS L
DR BUS DRY L
DR BUS PRCT STATUS L
DR BUS RD GATE L
DR BUS RD CLK L

DR BUS DC LO L
DR BUS SEC CNTR2 L
DR BUS WT GATE L
DR BUS SEL UPPER HD L
DR BUS SEC PLS L
DR BUS RK05 L
DR BUS WT PROTECT L
DR BUS RD DATA L



BG 6 IN H
BG 5 IN H
BUS BR 5 L

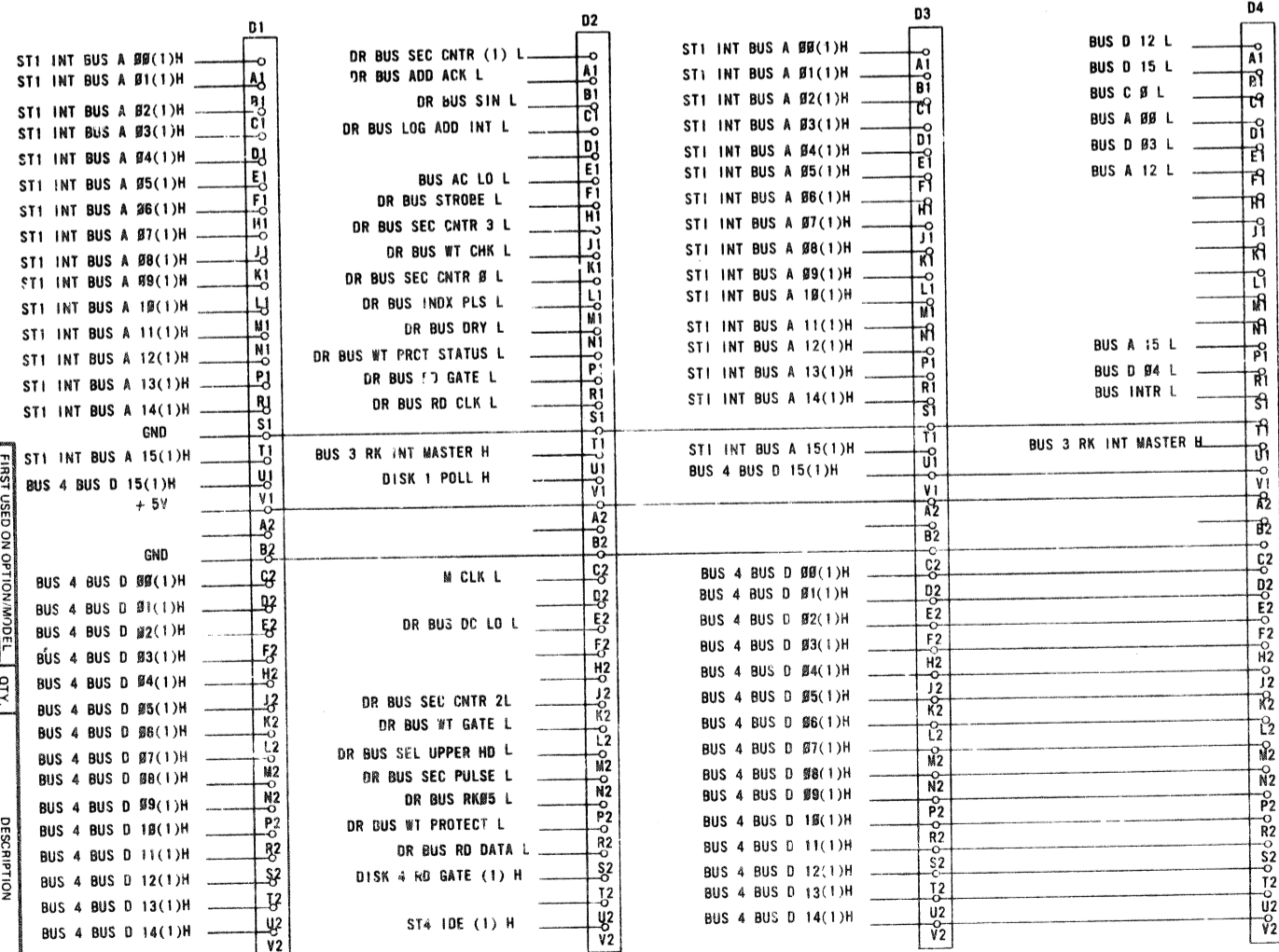
BUS AC LO L
BUS A 01 L
BUS A 03 L
BUS A 05 L
BUS A 07 L
BUS A 09 L
BUS A 11 L
BUS A 13 L
BUS A 15 L
BUS A 17 L

BUS SSYN L
BUS MSYN L
+5V

BUS BR 4 L
BG 4 IN H
BUS DC LO L
BUS A 00 L
BUS A 02 L
BUS A 04 L
BUS A 06 L
BUS A 08 L
BUS A 10 L
BUS A 12 L
BUS A 14 L
BUS A 16 L
BUS C1 L
BUS C0 L

REVISIONS		
CHK	CHANGE NO.	REV.

FIRST USED ON OPTION MODEL		QTY.	DESCRIPTION	PART NO.	TEST NO.
RK11-D					
UNLESS OTHERWISE SPECIFIED					
DIMENSION IN INCHES					
TOLERANCES					
DECIMALS					
ANGLES					
X.XX - .005					
X.X - .01					
X - .1					
REMOVE BURNS AND CRACKS SHARP					
COMMENTS SURFACE QUALITY					
MATERIAL					
NEXT HIGHER ASSY.					
FINISH					
SCALE					
SHEET 2 OF 2					
DIST.					
REV.					
SIZE CODE					
DICKRII-D-3					
NUMBER					
REV.					
RK11-D					
BACKPANEL					

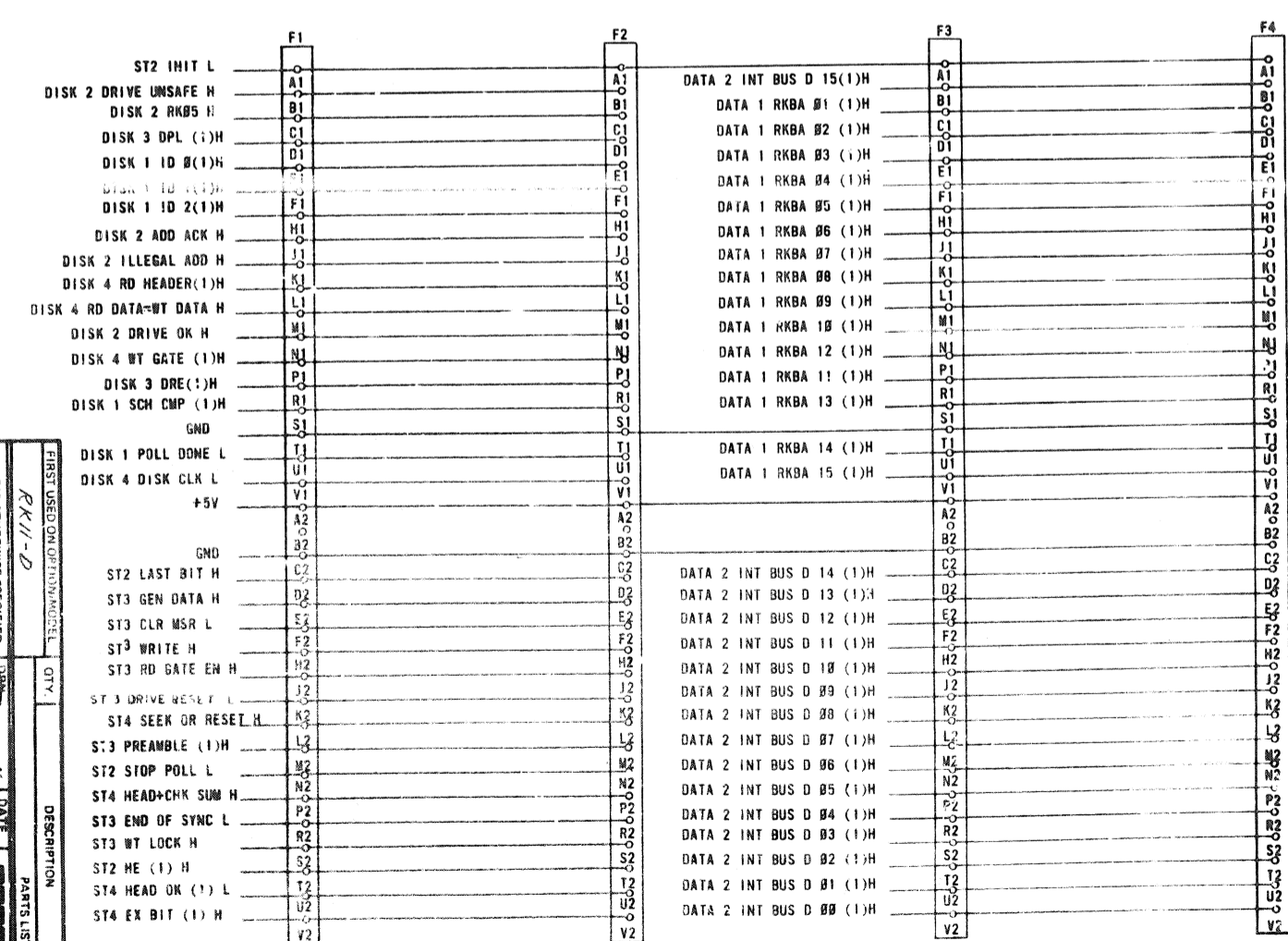
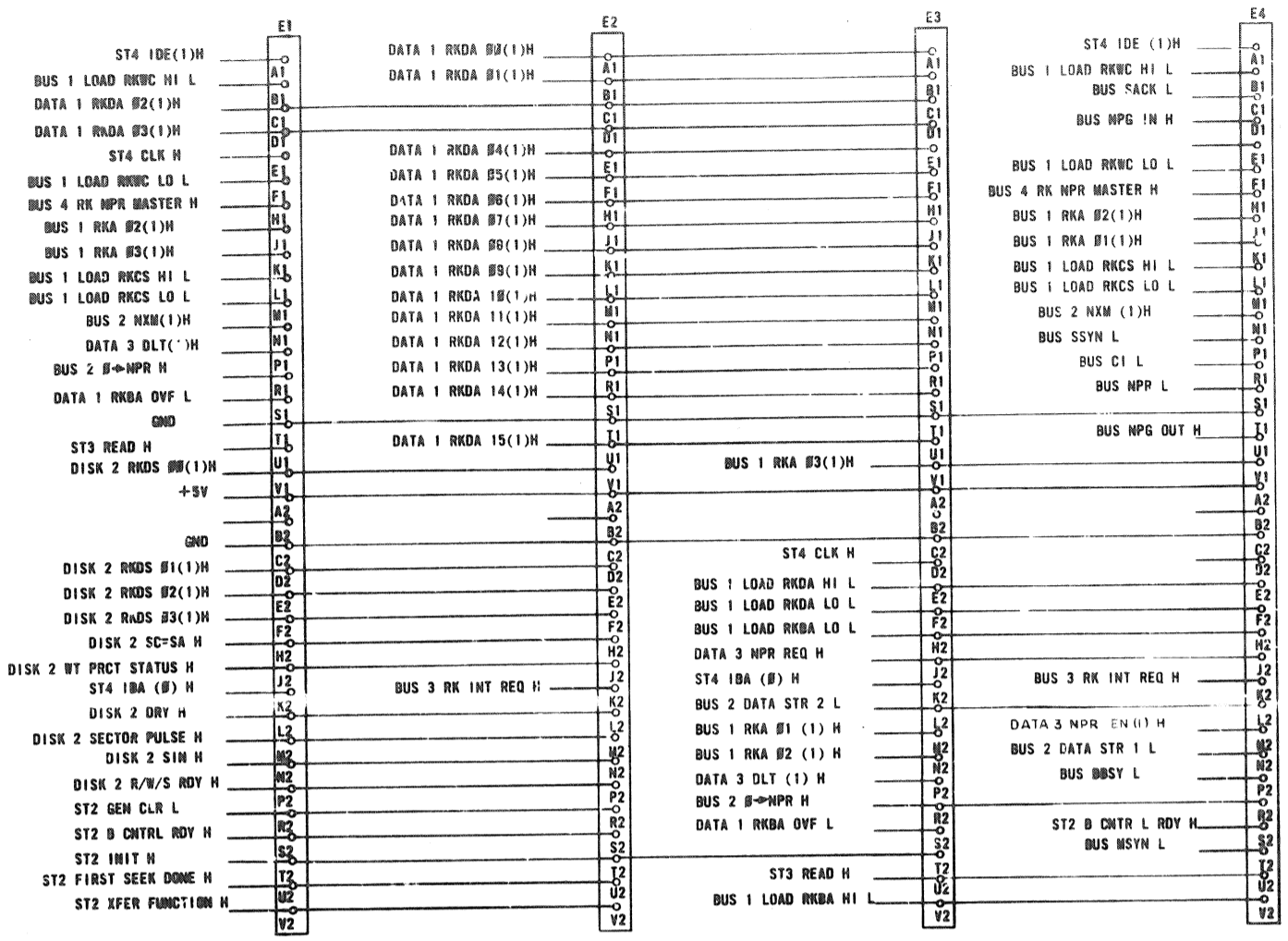


ST1	INT	BUS	A	15(1)H	T1
BUS	4 <td>BUS</td> <td>D</td> <td>15(1)H</td> <td>U1</td>	BUS	D	15(1)H	U1
				+ 5V	V1
					A2
					B2
					G2
					Q2
					E2
					F2
					H2
					J2
					K2
					L2
					M2
					N2
					P2
					R2
					S2
					T2
					U2
					V2

This drawing is the property of the U.S. Government and is loaned to your organization for use in connection with the performance of a specific task. It is not to be distributed outside your organization without the express written permission of the U.S. Government. COPYRIGHT ©

BRUNING 40-522 15840

REVISIONS		
CHK	CHANGE NO	REV

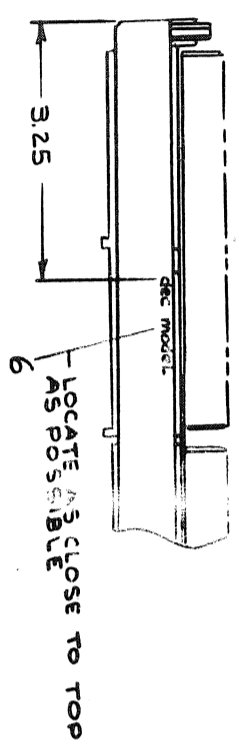
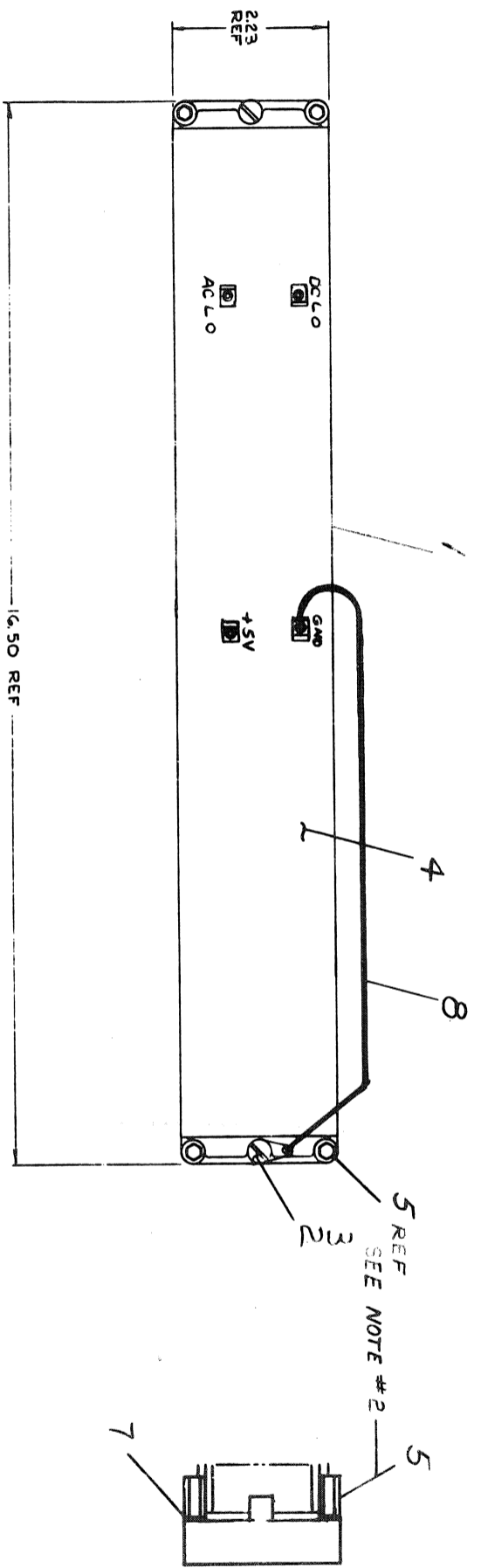


FIRST USED ON OTHER MODEL		DATE	
RKII-D		11/1/72	
UNLESS OTHERWISE SPECIFIED		DATE	
DIMENSION IN INCHES		11/1/72	
TOLERANCES		DATE	
DECIMALS		11/1/72	
ANGLES		DATE	
XX - .005		11/1/72	
XX - .01		11/1/72	
X - .1		11/1/72	
REMOVE BURRS AND BREAK SHARP CORNERS SURFACE QUALITY		DATE	
NEXT HIGHER ASSY		DATE	
FINISH		DATE	
SCALE		DATE	
SHEET 4 OF		DATE	
DIST.		DATE	
NUMBER		DATE	
REV		DATE	
A		DATE	
B-00-RKII-D-3		DATE	
DICK		DATE	
RKII-D		DATE	
BACKPANEL		DATE	
EQUIPMENT		DATE	
CORPORATION		DATE	
MANUFACTURED		DATE	

3-D-1-RKII-D-3

This drawing and specifications, together with the project description, constitute the contract for the work to be performed. No change orders or amendments shall be made without the written approval of the Engineer.

- NOTES:
1. USE YELLOW WIRE ITEM #4 FOR MACHINE WRAPPED.
 2. INSTALL STAND-OFFS (ITEM #5) BEFORE AWT.
 3. FOR CIRCUIT SCHEMATIC REFER TO D-CS-5401B5-0-1
 4. INSTALL GROUND CABLE (ITEM #8) AFTER AWT.



QTY.	DESCRIPTION	PART NO.	ITEM NO.
1	GROUND CABLE	679-7009328-0-0	8
4	LOCKWASHER #6 EXT 700TH	9007649	7
1	DECAL LOGIC SERIAL NUMBER	A-55-74078% 00	6
4	STAND-OFF UN #14 6 B	9009120-1	5
A/R	30 SOLID CONDUCTOR KYNAR	9105740-94	4
2	SCR CAPTIVE (8-32X1.78)	9008157	3
2	RETAINING RING	9009316-1	2
1	BACK PANEL (RK11-D)	D-1A-7009131-04	1

REV.	CHANGE NO.	REVISIONS
A	RK11-D-00010	1
	ORA	
	R. Penn	11-12-73

UNLESS OTHERWISE SPECIFIED DIMENSION IN INCHES TOLERANCES		DATE	
DECIMALS	ANGLES	DATE	DATE
.XXX = .003	± 0° 30'	9/25/72	
.XX = .01		DATE	
.X = .1		DATE	
REMOVE BURRS AND BREAK SHARP CORNERS SURFACE QUALITY		PROD. DATE	DATE
MATERIAL		DATE	DATE
FINISH		DATE	DATE
NEXT HIGHER ASSY.		DATE	DATE
B-DD-RK11-D		DATE	DATE
SCALE		DATE	DATE
SHEET 1 OF 1		DATE	DATE
DIST.		DATE	DATE
NUMBER		DATE	DATE
C 1A 7009142-0-0		DATE	DATE
REV.		DATE	DATE
A		DATE	DATE

WIRED ASS'Y
(RK11-D)

Digital EQUIPMENT CORPORATION
MILWAUKEE, WISCONSIN 53211

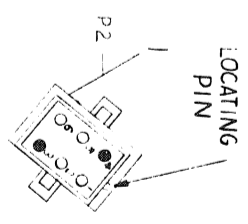
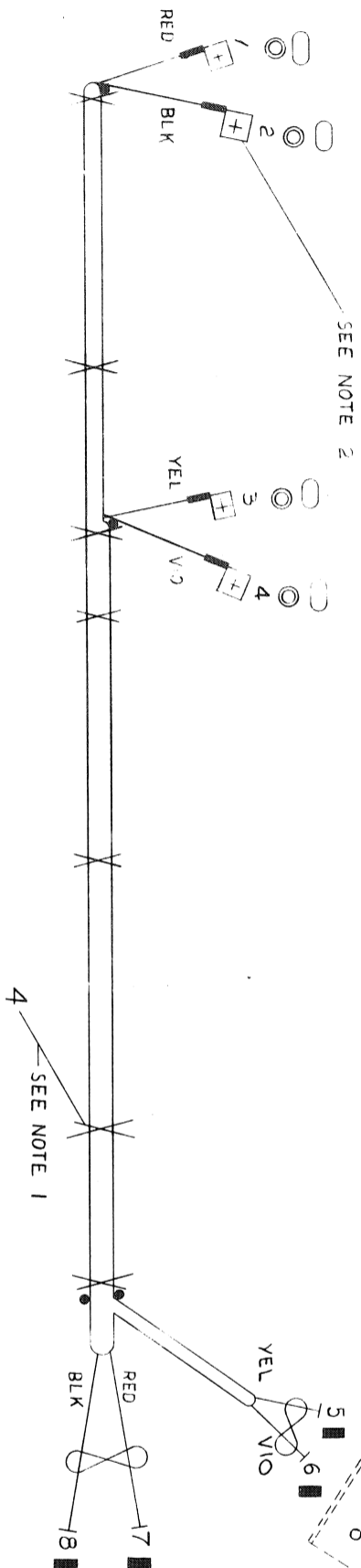
PARTS LIST

DEC FORM NO. 16-1031

5
PINK

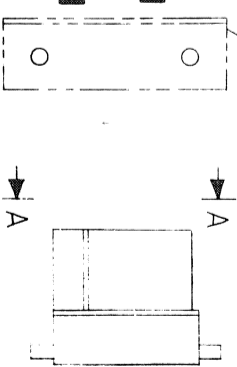
THIS DRAWING AND SPECIFICATIONS HEREIN ARE THE PROPERTY OF DIGITAL EQUIPMENT CORPORATION. NO PART SHALL BE REPRODUCED OR COPIED OR USED IN WHOLE OR IN PART WITHOUT THE WRITTEN PERMISSION OF DIGITAL EQUIPMENT CORPORATION.

WIRE TABLE									
ITEM NO	DESCRIPTION	FROM			TO			SIGNAL	
		AWG	COLOR	POINT	CONNECTION	TERM	POINT		
6	#18 YEL	3						AC LO	
5	#14 RED	1						DC LO	
4	#14 BLK	2						GND	



VIEW B-B
REAR VIEW
SCALE: NONE

- NOTES:
- USE THE WRAPS (X) ITEM #4 APPROXIMATELY EVERY THREE (3) INCHES WHEN NECESSARY, AND AT EVERY BREAKOUT POINT.
 - ATTACH MALE FASTON DEC # (9008219-0) WITH #4 WOOD SCREWS (4 PLACES).
 - USE CONN. BRKT. # C-MD-9305761-H15-0, MOUNT WITH #6 WOOD SCREWS. USE MATING CONN. 1209350-15.
 - USE CONN. BRKT. # C-MD-9305761-H15-0 MOUNT WITH #6 WOOD SCREWS. USE MATING CONN. 1209350-06.
 - DOT (●) INDICATES NAIL LOCATIONS FOR ASSEMBLY USE ONLY. COVER NAILS WITH SHRINK TUBING TO PREVENT CUTTING HARNESS.



VIEW A-A
REAR VIEW
SCALE: NONE

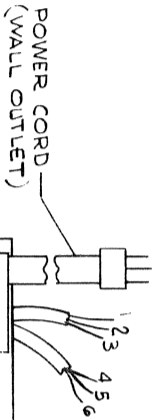
DO NOT REDUCE
DO NOT BUILD FROM REDUCED PRINT
SCALE
0 IN. 6 IN. 12 IN.

CAUTION - DRAWING SIZE AND
SCALE REDUCED FOR MICROFILM
NOT TO BE USED FOR PRODUCTION

FIRST USED ON OPT. XCD		SHEET 1 OF 1	
PARTS LIST		PART NO.	
DESCRIPTION		QTY.	
RK11-D		1	
UNLESS OTHERWISE SPECIFIED		DIMENSION IN INCHES	
TOLERANCES		DECIMALS	
ANGLES		10° 30'	
SURFACE FINISH		.005	
REMOVE BURNS AND BREAK SHARP CORNERS SURFACE QUALITY		.005	
MATERIAL		SEE PARTS LIST	
FINISH		SCALE 1/1	
SHEET 1 OF 1		DIST	
DIN		DATE	
CHK'D		DATE	
ENG.		DATE	
PROJ. ENG.		DATE	
PROD.		DATE	
NEXT HIGHER ASSY.		DATE	
TITLE		OPTION HARNESS	
RK11-D		NUMBER 11	
SIZE CODE		D 1A 7009554-1-0	
FINISH		SCALE 1/1	
SHEET 1 OF 1		DIST	

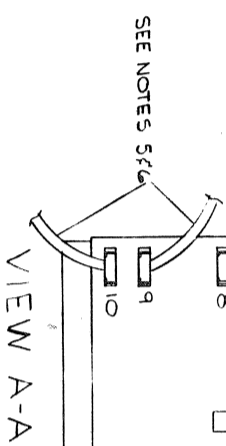
This drawing and specifications herein, are the property of Digital Equipment Corporation and shall remain the property of Digital Equipment Corporation in part as the basis for the manufacture or sale of items without written permission.

BASIC CAB ASSY 19
C-P-7006501-23-0
OR C-PL-7006501-31-0

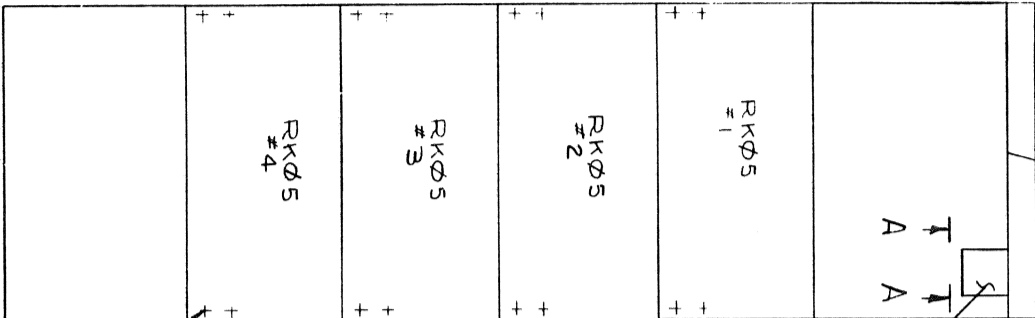


LOGO SEE NOTE #7

E-UA-860-0-0
POWER CONTROL



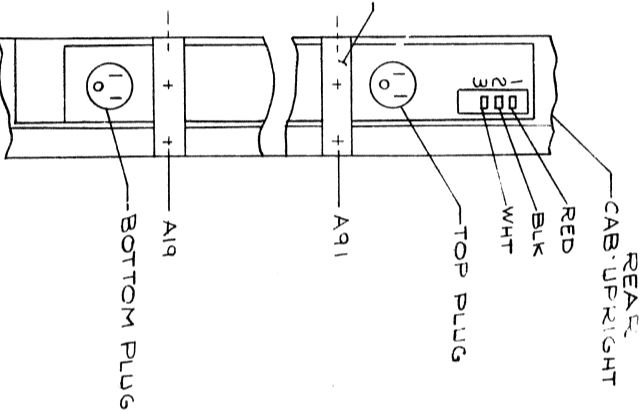
VIEW A-A



FRONT VIEW

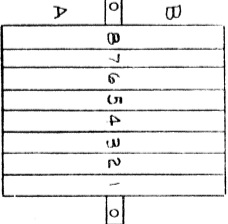
B-MD-7409275-0-0-0
SEE NOTE 8

VIEW B-B
TYP FOR RECEPTACLE #1 & 2



REAR VIEW

CONFIGURATION WITH 860 POWER CONTROL



VIEW C-C
TYP Rk05 #1
THRU Rk05 #4

BOTTOM PLUG

TOP PLUG

REAR UP-RIGHT

RED

BLK

WHT

TOP PLUG

BOTTOM PLUG

REAR UP-RIGHT

RED

BLK

WHT

TOP PLUG

BOTTOM PLUG

NOTES:

- 1) TO REMARK 860-A & B TO 860-C & D REFER TO DRAWING E-UA-860-0-0.
- 2) IF LESS THAN 4 DRIVES, THE M308 MODULE IS MOVED TO THE LAST DRIVE ON THE BUS IN THE SLOT NORMALLY OCCUPIED BY THE OUTCOMING BC11A CABLE.
- 3) IF MORE THAN 4 DRIVES, EACH WILL BE CONFIGURED SIMILARLY IN A SECOND CAB.
- 4) AS REQUIRED BY CONTROLLER, THE INCOMING CABLE TO Rk05 #5 MAY COME DIRECTLY FROM A DISK CONTROL OR FROM THE SLOT NORMALLY OCCUPIED BY THE M308 IN Rk05 #4. (SEE NOTE #2). POWER AND CABLING INFORMATION ALSO APPLY TO CAB #2.
- 5) IN A SYSTEM USING PDP-11/15, 11/20, OR PDP-8 PROCESSORS AND IF 860 OR 861 POWER CONTROL IS FIRST IN THE CHAIN OF POWER CONTROLS, CONNECT P1 OF CABLE #7008964 TO POWER CONTROL AND P2 OF 2 CABLE #7008964 TO H720-E/F IN THE PROCESSOR. DO NOT USE ANY OTHER JUMPER PLUG IN THE PROCESSOR POWER SUPPLY. IN ALL OTHER SITUATIONS USE CABLE #7008289 FOR INTERCONNECTIONS.
- 6) PLUGS 8, 9 AND 10 ARE WIRED IN PARALLEL. USE ANY PLUGS AS REQUIRED. NO JUMPER PLUG IS REQUIRED ON THE 860 OR 861 POWER CONTROL.
- 7) USE BLANK LOGO, COLOR TO COINCIDE WITH PRODUCT LINE.
- 8) TO MOUNT CHASSIS SLIDES ON RACK USE MOUNTING HARDWARE KIT #7008276 OR ITEMS:
1. TINNERMAN NUT #9007786
2. #10-32 PHL TRUSS #9006074-3
3. #10 EXTERNAL TOOTH #9007651
WASHER
LOCATION OF MOUNTING HOLES TO BE AS FOLLOWS:
STARTING FROM BOTTOM OF RACK HOLE NUMBERS FOR FRONT AND REAR, LEFT AND RIGHT
21, 24
39, 42
57, 60
75, 78.
- 9) USE THE PRE-FOLDED CREASES ON THE DISK BUS CABLE FOR CLAMPING. DO NOT PULL THE CABLE TIGHT AGAINST PRE-FILTER. LEAVE SERVICE LOOP SO THAT HAND CAN FIT BETWEEN THE CABLE AND FILTER.
- 10) Rk05'S PLUG INTO SWITCHED AC OUTLETS ONLY.

REVISIONS		
CHK	CHANGE NO	REV
27	RK05-00029	A
G. SCHNEIDER		
27	RK05-00043	B
G. SCHNEIDER		
27	RK05-00043	B
G. SCHNEIDER		

FIRST USED ON OPTION/MODEL		QTY.	DESCRIPTION	PART NO.	ITEM NO.
Rk05					
UNLESS OTHERWISE SPECIFIED					
DIMENSION IN INCHES					
TOLERANCES					
DECIMALS	ANGLES				
.XXX - .005	±0° 30'				
.XX - .02					
.X - .1					
REMOVE BURRS AND BREAK SHARP CORNERS SURFACE QUALITY					
MATERIAL					
FINISH					
SCALE					
SHEET 1 OF 3					
DIST					
PARTS LIST					
DRN	DATE				
CHK'D	DATE				
ENG	DATE				
APP'D	DATE				
PROD	DATE				
NEXT HIGHER ASSY.					
SIZE/CODE					
NUMBER					
REV					

It is the policy of Digital Equipment Corporation and shall not be used for any other purpose without the written permission of Digital Equipment Corporation.

BASIC CABINET ASSY 19"
C-PL-7006501-23-0
REF

LOGO SEE NOTE # 7

BASIC CAB ASSY 19"
C-PL-7006501-23-0
REF

10 9 SEE NOTE # 5 & 6

SWITCHED AC
SEE NOTE # 10

8

UNSWITCHED AC

861-B/C
POWER CONTROL
REF

DETAIL "A"
NOT TO SCALE

RKØ5
#1

RKØ5
#2

RKØ5
#3

RKØ5
#4

SEE NOTE # 8

FRONT VIEW

CONFIGURATION WITH 861 POWER CONTROL

REAR VIEW

RKØ5 #1
RKØ5 #2
RKØ5 #3
RKØ5 #4
861-B/C

E-VA-861-Ø-Ø
POWER CONTROL
SEE DETAIL "A"

REVISIONS		
CHK	CHANGE NO.	REV

FIRST USED ON OPTION/MODEL		QTY.	DESCRIPTION	PART NO.	ITEM NO.
4					
UNLESS OTHERWISE SPECIFIED		DATE	DATE	DATE	DATE
DIMENSIONS IN INCHES		1-10-72	7-12-72	7-12-72	7-12-72
TOLERANCES		ANGLES	± 0° 30'	± 0° 30'	± 0° 30'
DECIMALS		XXX - .005	XX - .02	X - .1	
REMOVE BURRS AND BREAK SHARP CORNERS. SURFACE QUALITY		✓			
MATERIAL		4			
FINISH		4			
SCALE		2 OF 3			
SHEET		2			
DIST.					
SIZE/CODE		D00	RKØ5 - Ø-15		
NUMBER					
REV.					

OPTION CONFIGURATION

RKØ5

OPTION CONFIGURATION

SIZE CODE NUMBER

D00 RKØ5 - Ø-15

REV

B

POWER CORD CONNECTIONS WITH 66C	
POWER CONTROL	
FROM	TO

RK05*1	AC RECEPTACLE #1 TOP PLUG
RK05*2	AC RECEPTACLE #2 TOP PLUG
RK05*3	AC RECEPTACLE #2 BOTTOM PLUG
RK05*4	AC RECEPTACLE #1 BOTTOM PLUG

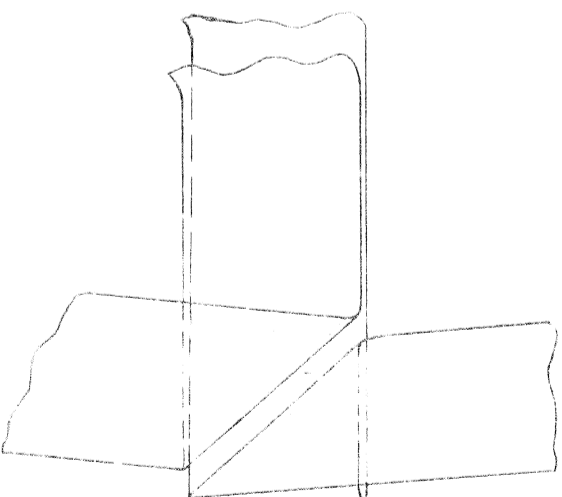
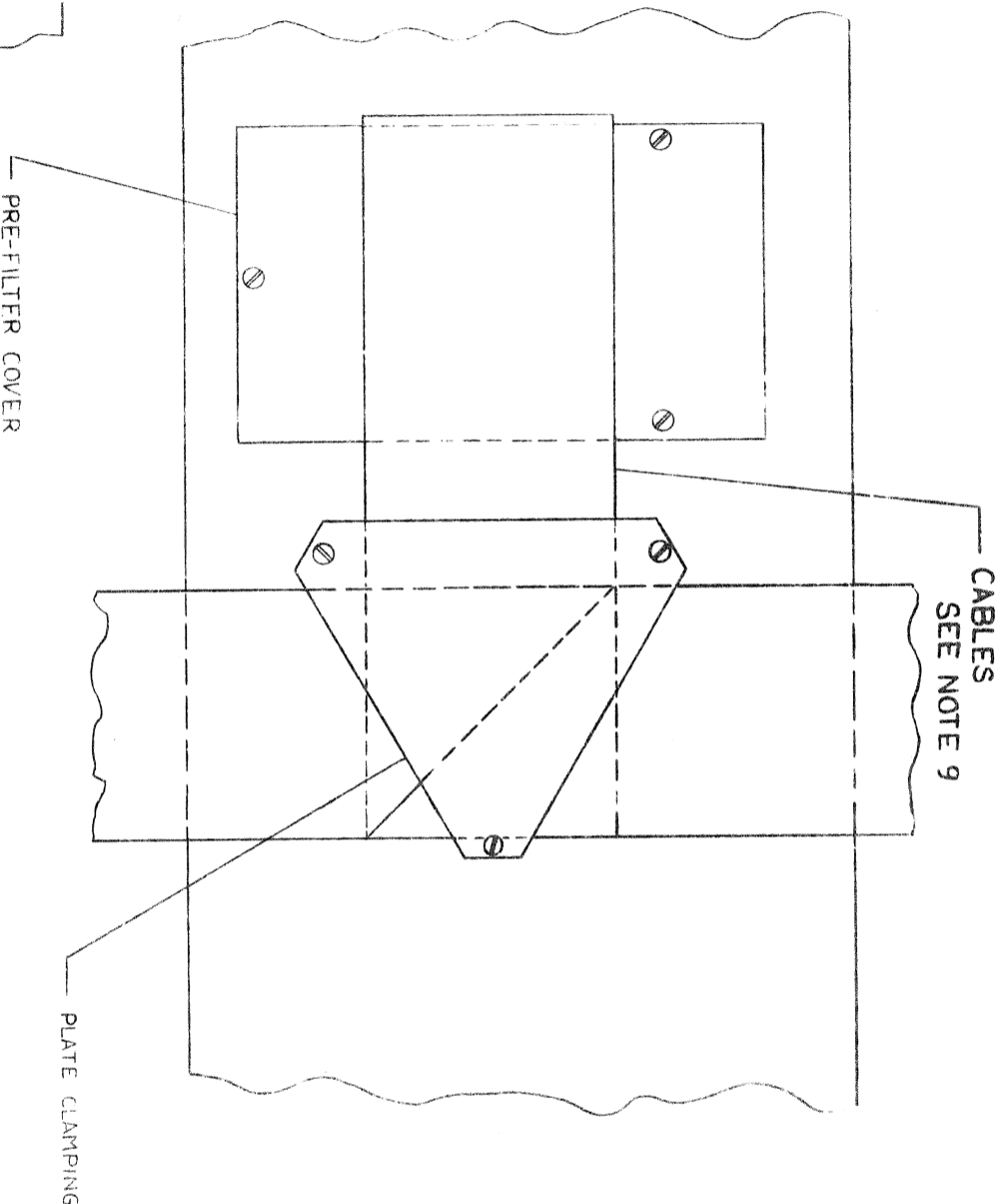
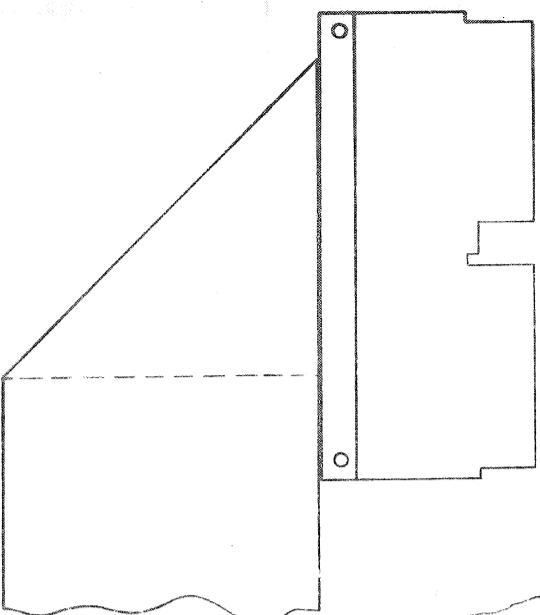
BUS CABLE CONNECTIONS					
FROM			TO		REMARKS
DIVCE	LOCATION	DEVICE	LOCATION	CABLE	
DISK CONTROL	A/R	RK05 #1	AB0	BC11A	5-10' A/R
RK05 #1	AB7	RK05 #2	AB7	BC11A-6	
RK05 #2	AB0	RK05 #3	AB7	BC11A-6	
RK05 #3	AB7	RK05 #4	AB7	BC11A-6	
RK05 #4	AB0	—	—	MQ30	MODULE

BUS CABLE CONNECTIONS					
FROM			TO		REMARKS
DIVCE	LOCATION	DEVICE	LOCATION	CABLE	
DISK CONTROL	A/R	RK05 #1	AB0	BC11A	5-10' A/R
RK05 #1	AB7	RK05 #2	AB7	BC11A-6	
RK05 #2	AB0	RK05 #3	AB7	BC11A-6	
RK05 #3	AB7	RK05 #4	AB7	BC11A-6	
RK05 #4	AB0	—	—	MQ30	MODULE

860 POWER CONNECTIONS

AW6	COLOR	FROM	T-O	REMARKS
10P	BLK	B600-PT1*	RECP #1-1	
	WHT	B600-PT2*	↑ #1-2	
10P	RED	B600-PT3*	↑ #1-3	SEE VIEW
	BLK	B600-PT4*	#2-1	B-B
	WHT	B600-PT5*	↑ #2-2	
10P	RED	B600-PT6*	RECP #2-3	

* (ASTERISK) INDICATES WIRE POINTS ON
6500 POWER CONTROL MARKED WITH
BRADY MARKERS.



FIRST FOLD FOR UNIBUS CABLE

REVISIONS		
CHK	CHANGE NO.	REV.

REVISIONS		
CHK	CHANGE NO.	REV.

FIRST USED ON CATION MODEL		PARTS LIST		PART NO.		REV.	
UNLESS OTHERWISE SPECIFIED DIMENSIONS IN INCHES TOLERANCES		DESCRIPTION		PART NO.		REV.	
DESCRIPTORS		DATE		DATE		DATE	
XX - 105 XX - 02 X - 1		DATE		DATE		DATE	
REMOVE BRASS AND NUTS FROM CURRENT CATION MODEL		DATE		DATE		DATE	
MATERIAL		DATE		DATE		DATE	
FINISH		DATE		DATE		DATE	
SCALE		DATE		DATE		DATE	
SHEET 3 OF 3		DATE		DATE		DATE	
TITLE		DATE		DATE		DATE	
CATION CONFIGURATION		DATE		DATE		DATE	
SIZE CODE		DATE		DATE		DATE	
DOC# K05-0-15		DATE		DATE		DATE	
REV		DATE		DATE		DATE	
B		DATE		DATE		DATE	

General, this equipment is not to be used for the maintenance or repair of any other equipment or system of any other company or organization. It is to be used only for the maintenance or repair of the equipment of the company or organization which it was originally designed for.

RK11-D			
B2	V2		
OFF	OFF		
A1	U1		
OFF	OFF		
CTRL RDY	HE	DATA	OUT BUFF FULL
SEEN OR RSET	RD OR RSET	WT OR RSET	IN BUFF FULL
WC OVF	WT GATE	RD GATE	FILE EMPTY
R1	RKDA 12	RKDA 11	FILE FULL
RKDA 10	RKDA 09	RKDA 08	D1
RKDA 07	RKDA 06	RKDA 05	RKDA 04
RKDA 03	RKDA 02	RKDA 01	RKDA 00

FIRST 6500 ON WPT/MOS

RK11-D

1	2	3	4	5	6	7	8	9	10	11	12	13	14	15	16	17	18	19	20	21	22	23	24	25	26	27	28	29	30	31	32	33	34	35	36	37	38	39	40	41	42	43	44	45	46	47	48	49	50	51	52	53	54	55	56	57	58	59	60	61	62	63	64	65	66	67	68	69	70	71	72	73	74	75	76	77	78	79	80	81	82	83	84	85	86	87	88	89	90	91	92	93	94	95	96	97	98	99	100
---	---	---	---	---	---	---	---	---	----	----	----	----	----	----	----	----	----	----	----	----	----	----	----	----	----	----	----	----	----	----	----	----	----	----	----	----	----	----	----	----	----	----	----	----	----	----	----	----	----	----	----	----	----	----	----	----	----	----	----	----	----	----	----	----	----	----	----	----	----	----	----	----	----	----	----	----	----	----	----	----	----	----	----	----	----	----	----	----	----	----	----	----	----	----	----	----	----	----	-----

SPEC # 9200100-94 (ELACK)

DATE 4-2-72

MAINTENANCE MODULE
OVERLAY (RK11-D)

EQUIPMENT CORPORATION
MAYNARD, MASSACHUSETTS

C-MD-5509081-0-0

SCALE 1/5

5509081-0-11

MAYNARD, MASSACHUSETTS

ACCESSORY LIST

MADE BY	CHECKED	SECTION	
DATE 12/1/72	DATE		PA PAPER TAPE ASCII
ENG 12-03	PROD P. 200-627		PB PAPER TAPE BINARY
DATE 11/1/72	DATE 12/13/72	ISSUED SECT.	PM PAPER TAPE
			READ-IN-MODE

ITEM NO.	DWG NO. / PART NO.	DESCRIPTION
----------	--------------------	-------------

RK11-D	QUANTITY / VARIATION
RK11-E	
KIT CHECK	
BY _____	DATE _____
INSTALLATION CHECK	
BY _____	DATE _____

[illegible]

TITLE		ASSY. NO.		SIZE CODE	NUMBER	REV.	ECONO
MOVING HEAD DISK CONTROL RK11-D,E				A AL	RK11-D-6		
SHEET	OF	DIST.					