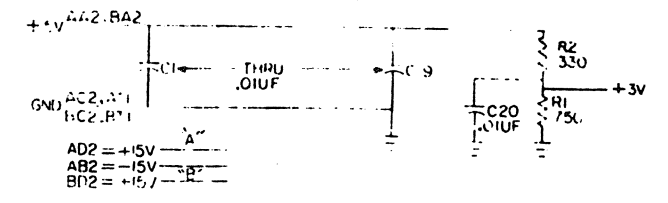
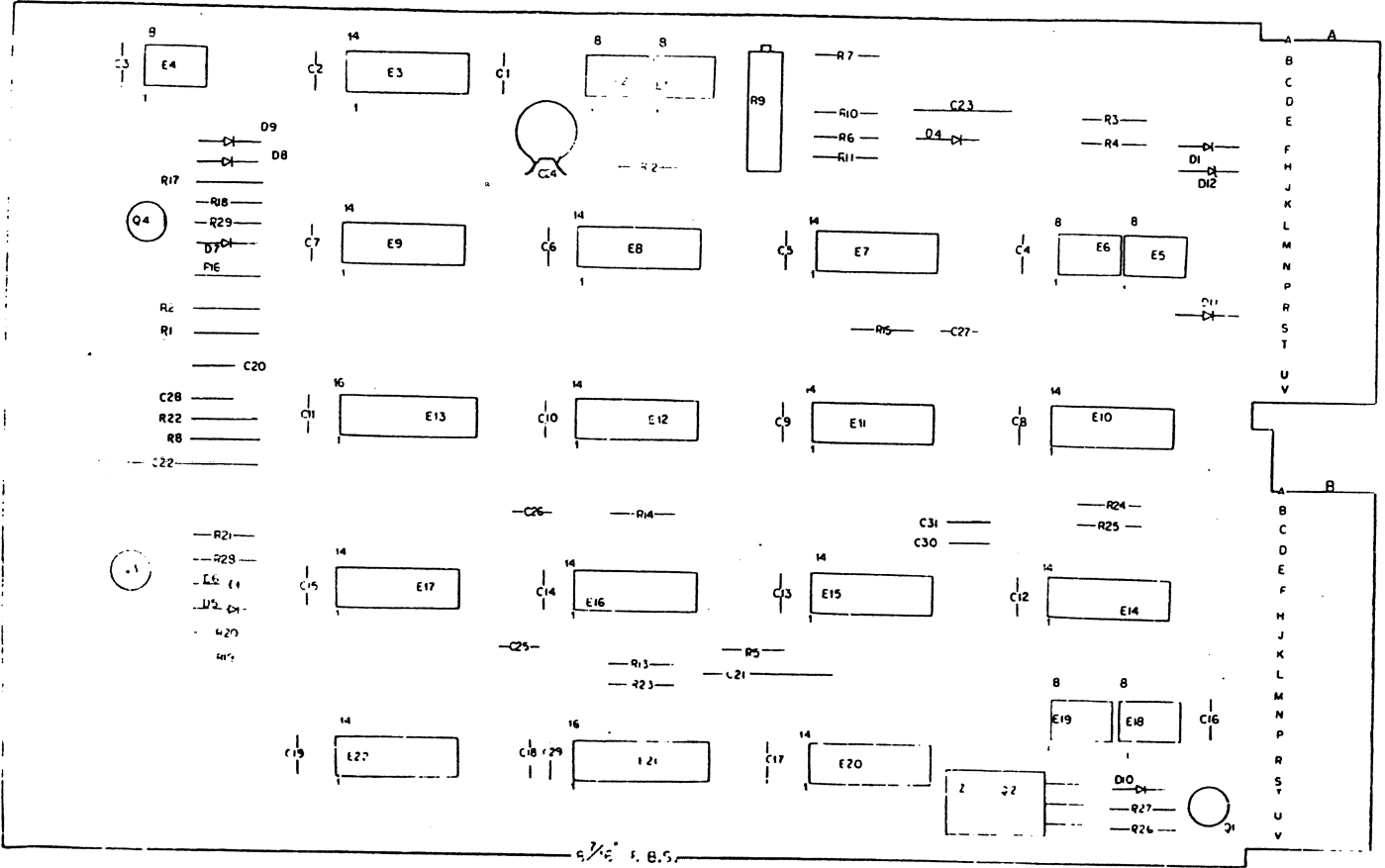


1. All dimensions and specifications herein are the property of Digital Equipment Corporation and shall not be reproduced or used in whole or in part as a basis for the manufacture of any other product without the written permission of Digital Equipment Corporation.

N 1-0-1072W 50 2



REV	DATE	BY	CHKD	APPD	DESCRIPTION
1	4-23-73	J. JENSEN			INITIALS
2	5-17-73	J. JENSEN			INITIALS
3	6-11-73	J. JENSEN			INITIALS
4	7-11-73	J. JENSEN			INITIALS
5	8-11-73	J. JENSEN			INITIALS
6	9-11-73	J. JENSEN			INITIALS
7	10-11-73	J. JENSEN			INITIALS
8	11-11-73	J. JENSEN			INITIALS
9	12-11-73	J. JENSEN			INITIALS
10	1-11-74	J. JENSEN			INITIALS
11	2-11-74	J. JENSEN			INITIALS
12	3-11-74	J. JENSEN			INITIALS
13	4-11-74	J. JENSEN			INITIALS
14	5-11-74	J. JENSEN			INITIALS
15	6-11-74	J. JENSEN			INITIALS
16	7-11-74	J. JENSEN			INITIALS
17	8-11-74	J. JENSEN			INITIALS
18	9-11-74	J. JENSEN			INITIALS
19	10-11-74	J. JENSEN			INITIALS
20	11-11-74	J. JENSEN			INITIALS
21	12-11-74	J. JENSEN			INITIALS
22	1-11-75	J. JENSEN			INITIALS
23	2-11-75	J. JENSEN			INITIALS
24	3-11-75	J. JENSEN			INITIALS
25	4-11-75	J. JENSEN			INITIALS
26	5-11-75	J. JENSEN			INITIALS
27	6-11-75	J. JENSEN			INITIALS
28	7-11-75	J. JENSEN			INITIALS
29	8-11-75	J. JENSEN			INITIALS
30	9-11-75	J. JENSEN			INITIALS
31	10-11-75	J. JENSEN			INITIALS
32	11-11-75	J. JENSEN			INITIALS
33	12-11-75	J. JENSEN			INITIALS
34	1-11-76	J. JENSEN			INITIALS
35	2-11-76	J. JENSEN			INITIALS
36	3-11-76	J. JENSEN			INITIALS
37	4-11-76	J. JENSEN			INITIALS
38	5-11-76	J. JENSEN			INITIALS
39	6-11-76	J. JENSEN			INITIALS
40	7-11-76	J. JENSEN			INITIALS
41	8-11-76	J. JENSEN			INITIALS
42	9-11-76	J. JENSEN			INITIALS
43	10-11-76	J. JENSEN			INITIALS
44	11-11-76	J. JENSEN			INITIALS
45	12-11-76	J. JENSEN			INITIALS
46	1-11-77	J. JENSEN			INITIALS
47	2-11-77	J. JENSEN			INITIALS
48	3-11-77	J. JENSEN			INITIALS
49	4-11-77	J. JENSEN			INITIALS
50	5-11-77	J. JENSEN			INITIALS

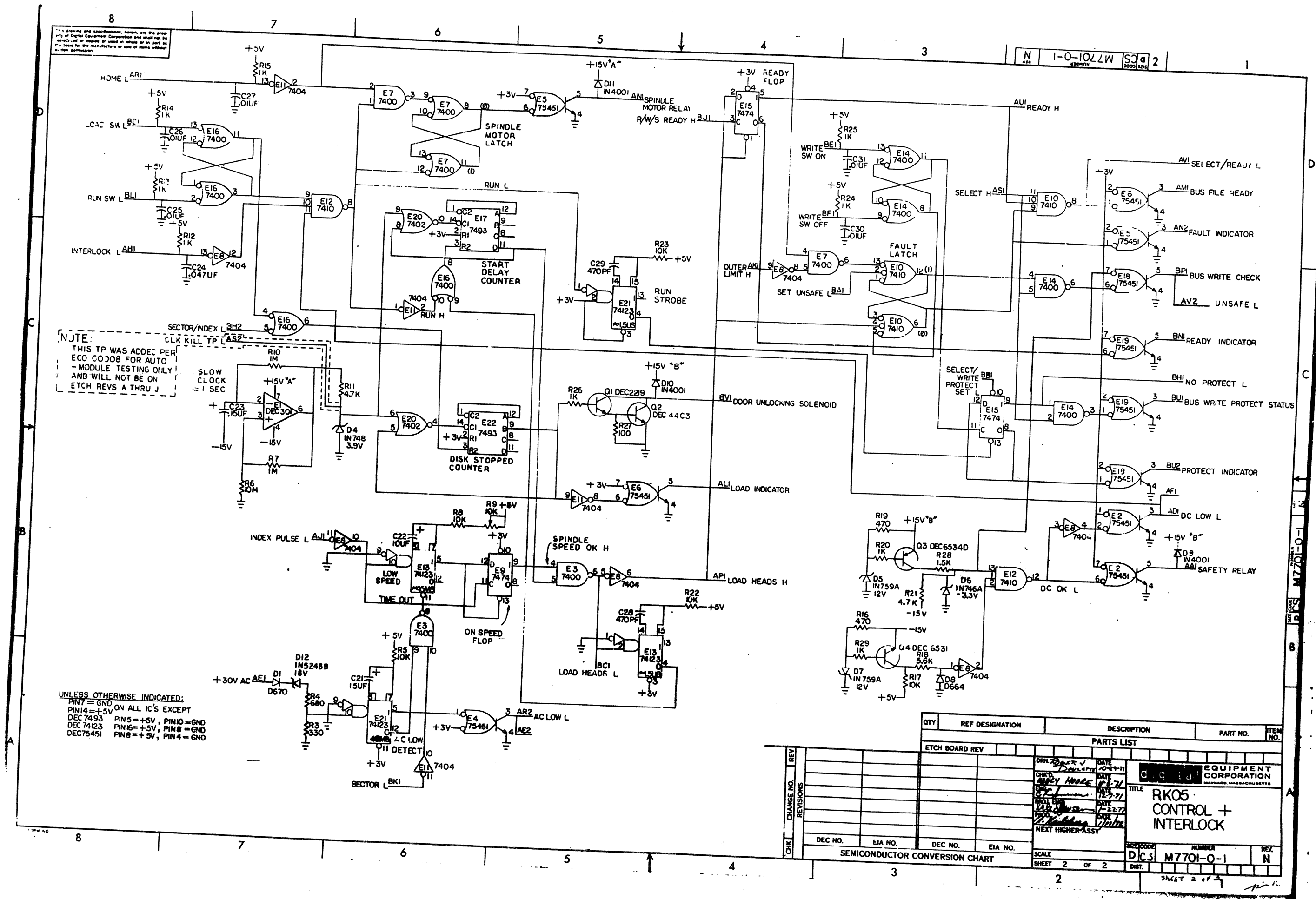
REV	DATE	BY	CHKD	APPD	DESCRIPTION
1	4-23-73	J. JENSEN			INITIALS
2	5-17-73	J. JENSEN			INITIALS
3	6-11-73	J. JENSEN			INITIALS
4	7-11-73	J. JENSEN			INITIALS
5	8-11-73	J. JENSEN			INITIALS
6	9-11-73	J. JENSEN			INITIALS
7	10-11-73	J. JENSEN			INITIALS
8	11-11-73	J. JENSEN			INITIALS
9	12-11-73	J. JENSEN			INITIALS
10	1-11-74	J. JENSEN			INITIALS
11	2-11-74	J. JENSEN			INITIALS
12	3-11-74	J. JENSEN			INITIALS
13	4-11-74	J. JENSEN			INITIALS
14	5-11-74	J. JENSEN			INITIALS
15	6-11-74	J. JENSEN			INITIALS
16	7-11-74	J. JENSEN			INITIALS
17	8-11-74	J. JENSEN			INITIALS
18	9-11-74	J. JENSEN			INITIALS
19	10-11-74	J. JENSEN			INITIALS
20	11-11-74	J. JENSEN			INITIALS
21	12-11-74	J. JENSEN			INITIALS
22	1-11-75	J. JENSEN			INITIALS
23	2-11-75	J. JENSEN			INITIALS
24	3-11-75	J. JENSEN			INITIALS
25	4-11-75	J. JENSEN			INITIALS
26	5-11-75	J. JENSEN			INITIALS
27	6-11-75	J. JENSEN			INITIALS
28	7-11-75	J. JENSEN			INITIALS
29	8-11-75	J. JENSEN			INITIALS
30	9-11-75	J. JENSEN			INITIALS
31	10-11-75	J. JENSEN			INITIALS
32	11-11-75	J. JENSEN			INITIALS
33	12-11-75	J. JENSEN			INITIALS
34	1-11-76	J. JENSEN			INITIALS
35	2-11-76	J. JENSEN			INITIALS
36	3-11-76	J. JENSEN			INITIALS
37	4-11-76	J. JENSEN			INITIALS
38	5-11-76	J. JENSEN			INITIALS
39	6-11-76	J. JENSEN			INITIALS
40	7-11-76	J. JENSEN			INITIALS
41	8-11-76	J. JENSEN			INITIALS
42	9-11-76	J. JENSEN			INITIALS
43	10-11-76	J. JENSEN			INITIALS
44	11-11-76	J. JENSEN			INITIALS
45	12-11-76	J. JENSEN			INITIALS
46	1-11-77	J. JENSEN			INITIALS
47	2-11-77	J. JENSEN			INITIALS
48	3-11-77	J. JENSEN			INITIALS
49	4-11-77	J. JENSEN			INITIALS
50	5-11-77	J. JENSEN			INITIALS

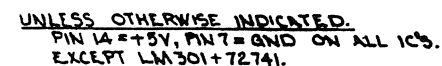
QTY	REF DESIGNATION	DESCRIPTION	PART NO.	ITEM NO.
1	C24	CAP. 0.47UF 16V DISC	1009673	50
1	D12	DIODE 1N5248B 18V 5%	1110766	49
1		NUT KEP #4	9006557	48
1		SCREW 4-40 X 5/16	9006010-1	47
2		HANDLE, FLIP CHIP - MAGENTA	9008337-06	46
4		SYZLET #30L-7	9006732	45
1	E1	I.C. DEC 301	1910282	44
6	E2, 4, 6, 5, 18, 19	I.C. DEC 75451	1910406	43
2	E21, 13	I.C. DEC 74123	1910436	42
2	E22, 17	I.C. DEC 74123	1909054	41
2	E9, 15	I.C. DEC 74123	1905547	40
2	E12, 10	I.C. DEC 74123	1905576	39
2	E11, 8	I.C. DEC 7404	1909686	38
1	E20	I.C. DEC 7402	1909004	37
4	E3, 7, 14, 14	I.C. DEC 7400	1905575	36
1	Q2	TRANSISTOR DEC 44C3	1510171	35
1	Q1	TRANSISTOR DEC 6534D	1503409-00	34
1	Q3	TRANSISTOR DEC 2219	1501881	33
1	Q4	TRANSISTOR DEC 6531	1509138	32
1	R9	RES. 10K 3/4W 10% 76PR	1309143-10	31
1	R6	RES. 10M 1/4W 5%	1302666	30
2	R7, 10	RES. 1M 1/4W 5%	1309595	29
5	R17, 5, 22, 23, 8	RES. 10K 1/4W 5%	1300479	27
1	R16	RES. 5.6K 1/4W 5%	1301874	26
1	R11, R21	RES. 4.7K 1/4W 5%	1300447	25
1	R4	RES. 680 1/4W 5%	1301474	24
1	R28	RES. 1.5K 1/4W 5%	1300381	23
9	R12, 13, 14, 29, 15, 20, 24, 25, 26	RES. 1K 1/4W 5%	1300365	22
1	R1	RES. 750 1/4W 5%	1301401	21
2	R16, 19	RES. 470 1/4W 5%	1300316	20
2	R2, 3	RES. 330 1/4W 5%	1300295	19
1	R27	RES. 100 1/4W 5%	1300229	18
4		GRIP PLATE	1210244-0	17
2	R5, 7	DIODE 1N752 12V	1110244-0	16
1	D6	DIODE 1N740 3.9V	1110244-0	15
1	D6	DIODE 1N746A 1.8V	1100121	14
1	D9, 10, 11	DIODE 1N4001	1102942	13
1	D3	DIODE D470	1102162	12
1	D8	DIODE D444	1100114	11
2	C28, 9	CAP. 470PF 100V 5% D.M.	1000024	9
1	Q23	CAP. .15UF 35V 20% TANT	1002180	8
1	Q22	CAP. 10UF 20V 10% TANT	1002180	7
1	C21	CAP. .15UF 20V 10% TANT	1000812	6
28	C3 - 20, 25 - 7, 30, 11	CAP. .01UF 100V 20% DISC	1001610	5
1		ETC. CIRCUIT BOARD	9009714	4
		MODULE BCD HISTORY	B-M-H-7701-0-4	3
		ASSY/DRILLING MOUNT LAYOUT	B-M-H-7701-0-5	2
		A-Y COORDINATE MOUNT LOCATION	B-M-H-7701-0-4	1
QTY	REF. DESIGNATION	DESCRIPTION	PART NO.	ITEM NO.

ETCH BOARD REV		K
PARTS LIST		
DRN. 10-11-71	DATE	10-11-71
CHKD. J. JENSEN	DATE	10-11-71
ENG. J. JENSEN	DATE	10-11-71
PROL. J. JENSEN	DATE	10-11-71
PROD. J. JENSEN	DATE	10-11-71
NEXT HIGHER ASSY		
SCALE		
SHEET 1 OF 2		
SIZE CODE		
NUMBER		
REV.		

digital EQUIPMENT CORPORATION  
MASSACHUSETTS  
TITLE  
DISK ENG.  
CONTROL +  
INTERLOCK

SEMICONDUCTOR CONVERSION CHART

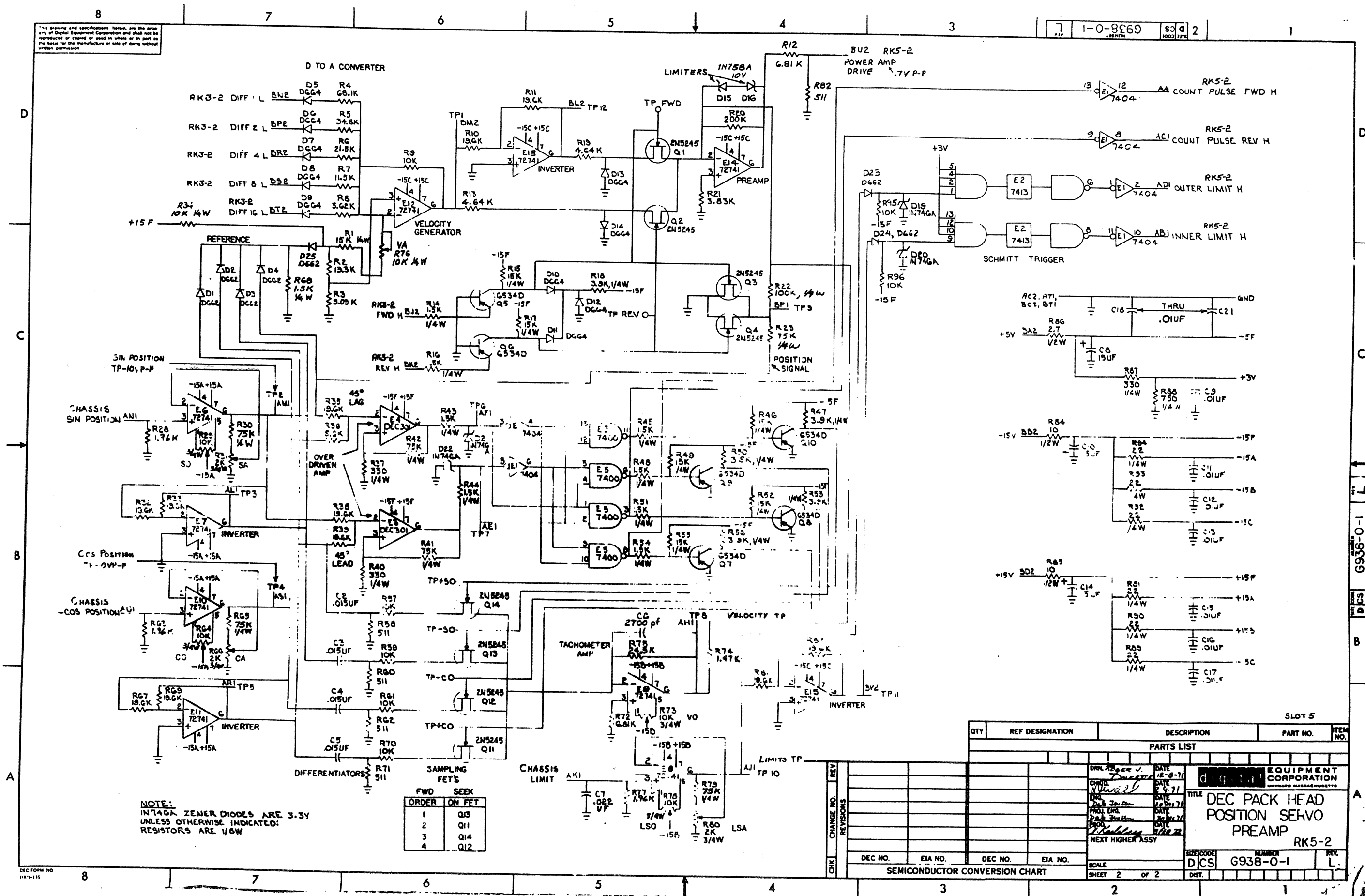




QTY	REF	DESIGNATION	DESCRIPTION		PART NO	ITEM NO.
PARTS LIST						
ETCH BOARD REV	K					
		DRN. <i>ROGER J</i>	DATE <i>12-8-71</i>	<div style="display: flex; align-items: center;"> <div style="border: 1px solid black; padding: 2px; margin-right: 5px;">digital</div> <div> <b>EQUIPMENT CORPORATION</b>  <small>MAYNARD MASSACHUSETTS</small> </div> </div> <div style="margin-top: 10px;"> <b>TITLE</b>            DEC PACK HEAD            POSITION SERVO            PREAMP            RK5-1         </div>		
		<i>ENGINEER</i>	DATE <i>12-9-71</i>			
		CHKD. <i>W. J. B.</i>	DATE <i>30 DEC 71</i>			
		ENGR. <i>Don Jensen</i>	DATE <i>2nd Dec 71</i>			
		PROJ. ENGR. <i>Don Jensen</i>	DATE <i>12/28/71</i>			
		PROD. <i>W. H. H. H.</i>				
DEC NO.	EIA NO.	NEXT HIGH CROISSY		SIZE CODE	NUMBER	REV.
CONVERSION CHART		SCALE	D/C S	G938-0-1		L
		SHEET 1 OF 2	DISC			

6534D	NONE			
2N5245				
D662	IN 645			
D664	IN 3606			
IN 746A	SAME			
DEC NO	EIA NO.	DEC NO.	EIA NO.	

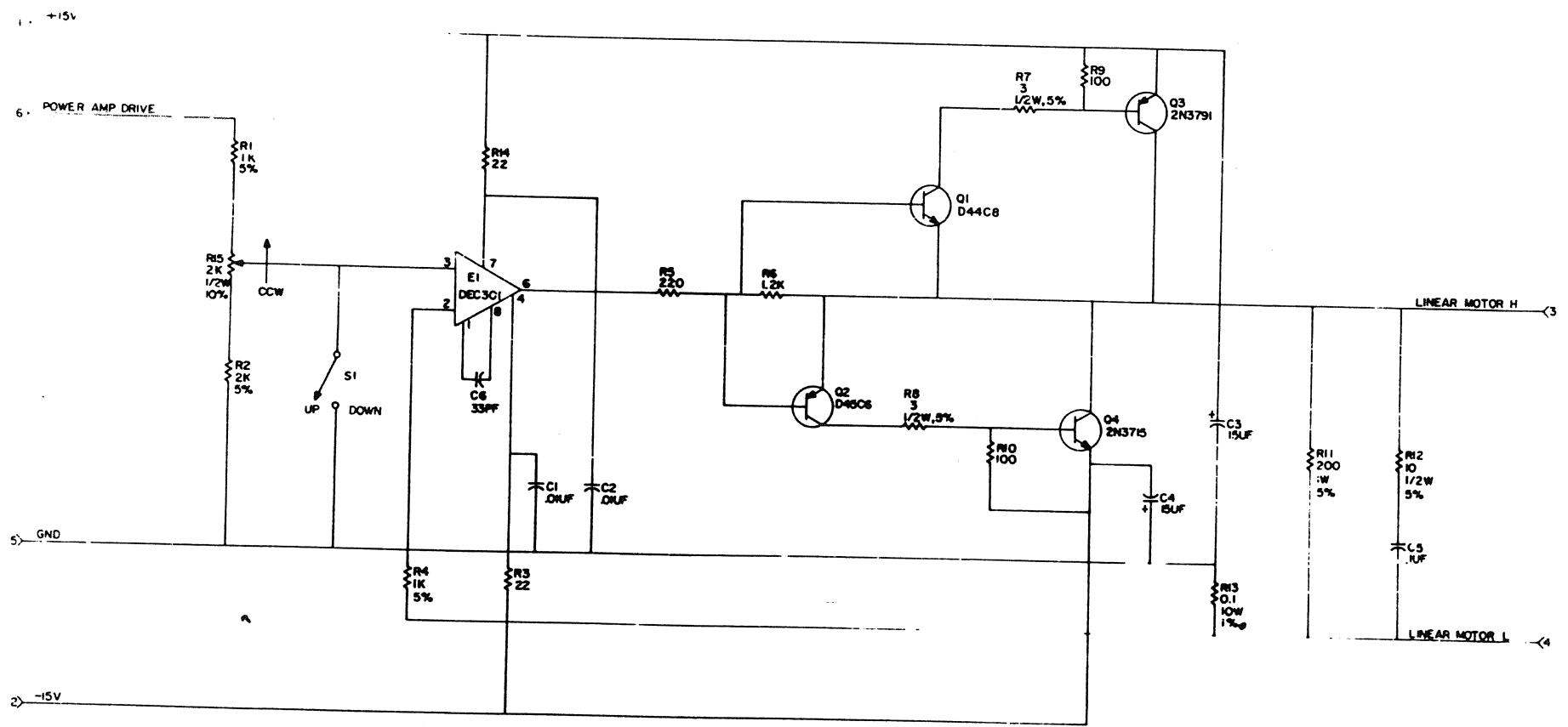
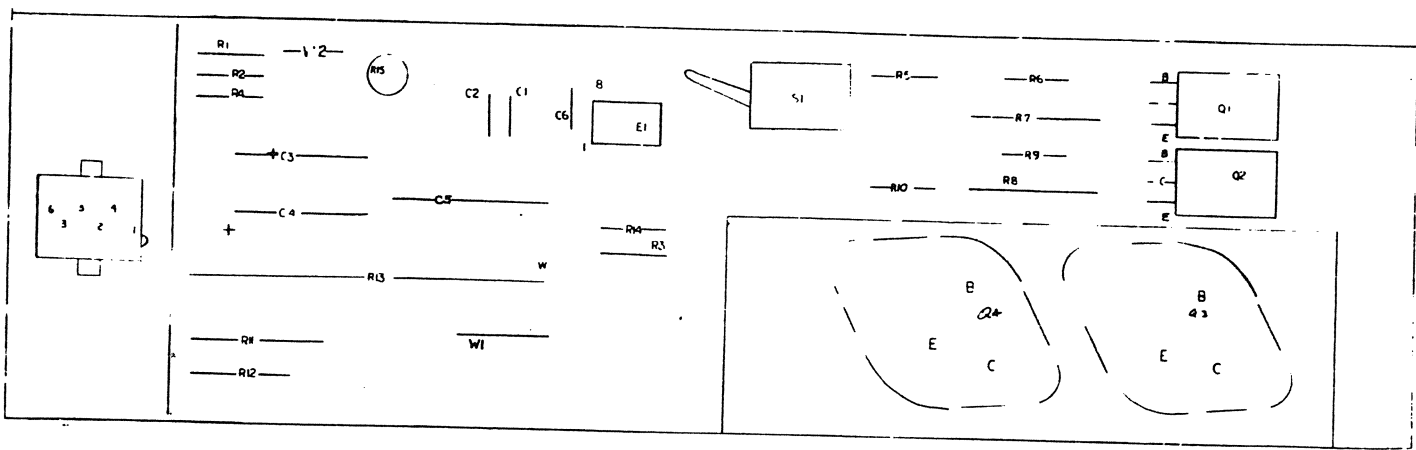
**SEMICONDUCTOR CONVERSION CHART**





FOR TEST AND MAINTENANCE PURPOSES THE  
CIRCUIT SHOULD BE TREATED ACCORDINGLY  
EQUIPMENT CORPORATION

1-0-09H  
CS D  
5003 11/5



UNLESS OTHERWISE INDICATED:  
RES. ARE 1/4 W, 10%  
R13 IS A CURRENT SENSING RES.

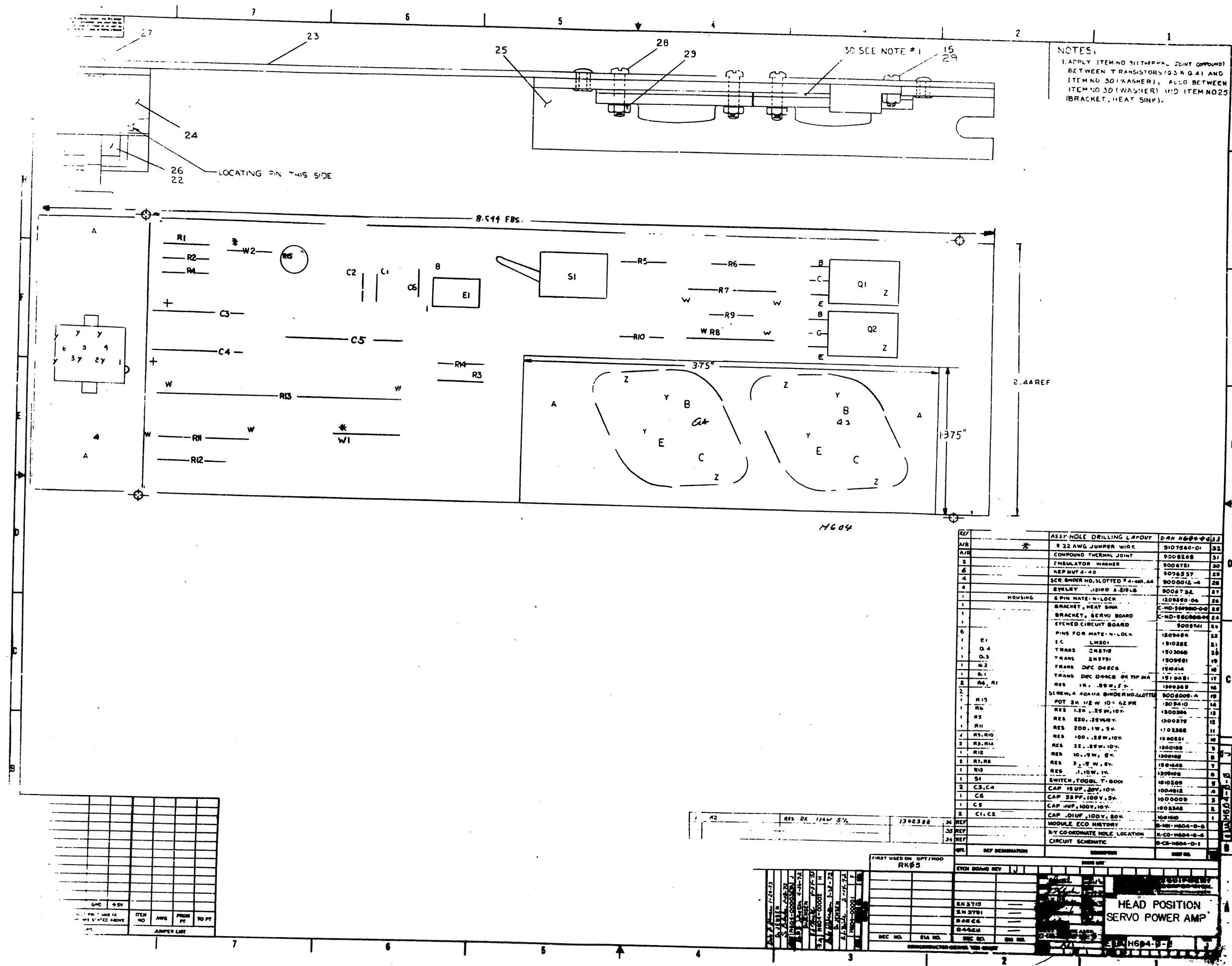
REVISIONS	DATE	BY	CHKD	APP'D
1	10/1/71	J. J. J.		
2	10/1/71	J. J. J.		
3	10/1/71	J. J. J.		
4	10/1/71	J. J. J.		
5	10/1/71	J. J. J.		
6	10/1/71	J. J. J.		
7	10/1/71	J. J. J.		
8	10/1/71	J. J. J.		
9	10/1/71	J. J. J.		
10	10/1/71	J. J. J.		

DATE 10/1/71  
BY J. J. J.  
CHKD  
APP'D

TRANSISTOR & DIODE CONVERSION CHART			
TRANSISTOR	DIODE	TRANSISTOR	DIODE
2N3715	1N4148	2N3791	1N4148
2N44C8	1N4148	2N45C6	1N4148
2N45C6	1N4148	2N44C8	1N4148
2N3791	1N4148	2N3715	1N4148

EQUIPMENT  
CORPORATION  
MILFORD, MASSACHUSETTS

TITLE DECPAK HEAD POS.  
SERVO PWR. AMP.  
REV D CS  
10/1/71  
PRINTED CIRCUIT REV.



The diagram illustrates the electrical connections between a control panel (left) and a tape drive unit (right). The control panel features terminals J3 and J2. The tape drive unit includes various indicator lights (I1 through I8) and switches (SW2, SW3).

**Terminal J3 Connections:**

- 12: +15VDC H
- 14: GND L
- 9: LOAD INDICATOR L
- 5: READY INDICATOR L
- 8: WRITE PROTECT INDICATOR L
- 3: WRITE INDICATOR L
- 6: SEEK DONE INDICATOR L
- 2: FAULT INDICATOR L
- 1: READ INDICATOR L
- 4: LOAD L
- 10: RUN L
- 7: WT. PROT. SW OFF L
- 13: WT. PROT. SW ON L
- 15: INTERLOCK L
- 11: DOOR UNLOCK SOLENOID L
- 2: J2
- 4: DOOR LOCKED SWITCH
- 3: DOOR UNLOCK SOLENOID RET.
- 1: CARTRIDGE SEATED SWITCH

**Terminal J2 Connections:**

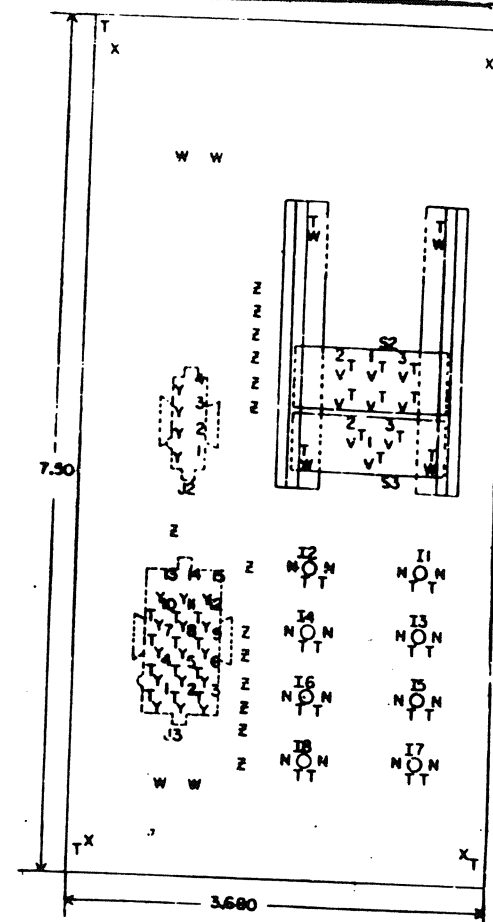
- 2: DOOR UNLOCK SOLENOID L
- 4: DOOR LOCKED SWITCH
- 3: DOOR UNLOCK SOLENOID RET.
- 1: CARTRIDGE SEATED SWITCH

**Indicator Lights (I1 through I8):**


- I1: PWR IND.
- I4: LOAD IND.
- I3: RDY IND.
- I2: WT PROT IND.
- I6: WT IND.
- I5: ON CYL IND.
- I7: FAULT IND.
- I8: RD IND.

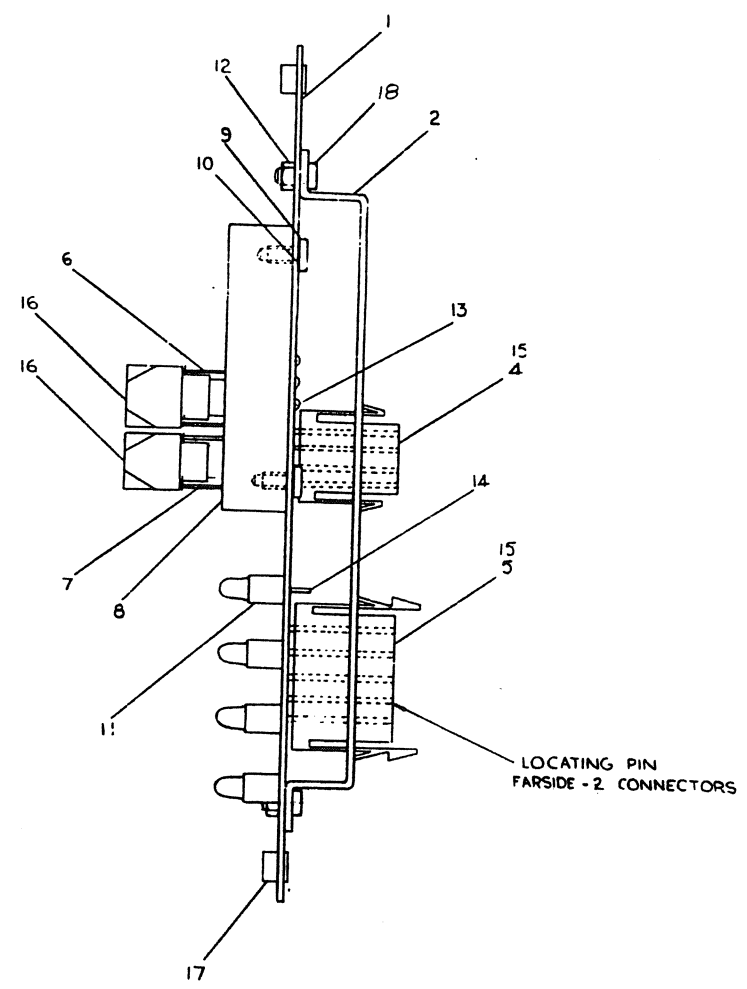
**Switches (SW2, SW3):**

- SW2: LOAD (Terminals 1, 2, 3)
- SW3: WT. PROT. OFF (Terminals 1, 2, 3)



NAME	DATE	REMARKS
D. JENSEN		
<i>Pete Jensen</i>		
<i>L. OGDEN</i>		
<i>H. H. HARRIS</i>		
D. JENSEN		
<i>Pete Jensen</i>		
<i>L. OGDEN</i>		
<i>H. H. HARRIS</i>		
D. JENSEN		
<i>Pete Jensen</i>		
<i>L. OGDEN</i>		
<i>H. H. HARRIS</i>		

DRN. <b>S. COOPER</b>	DATE <b>11-20-71</b>	TRANSISTOR & DIODE CONVERSION CHART				 <b>EQUIPMENT CORPORATION</b> MATTHEWS, MASSACHUSETTS	TITLE <b>RK05 CONTROL PANEL</b>		<b>RK7-1</b>
CHK'D <b>M. NELSON</b>	DATE <b>11-23-71</b>	DEC	EIA	DEC	EIA		SIZE <b>C</b> CODE <b>CS</b> NUMBER <b>5409698-0-1</b>	REV. <b>D</b>	
DATE <b>11-23-71</b>	DATE <b>11-23-71</b>								
DATE <b>11-23-71</b>	DATE <b>11-23-71</b>								
DATE <b>11-23-71</b>	DATE <b>11-23-71</b>								
PROD.	DATE					PRINTED CIRCUIT REV.		<b>D</b>	

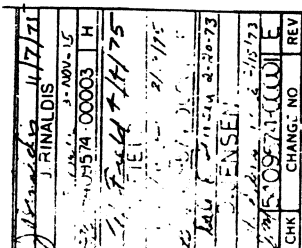
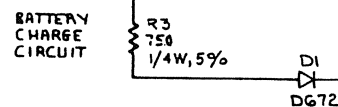
[illegible]


1. RELAY CONTACTS ARE SHOWN IN THE DE-ENERGIZED POSITIONS.

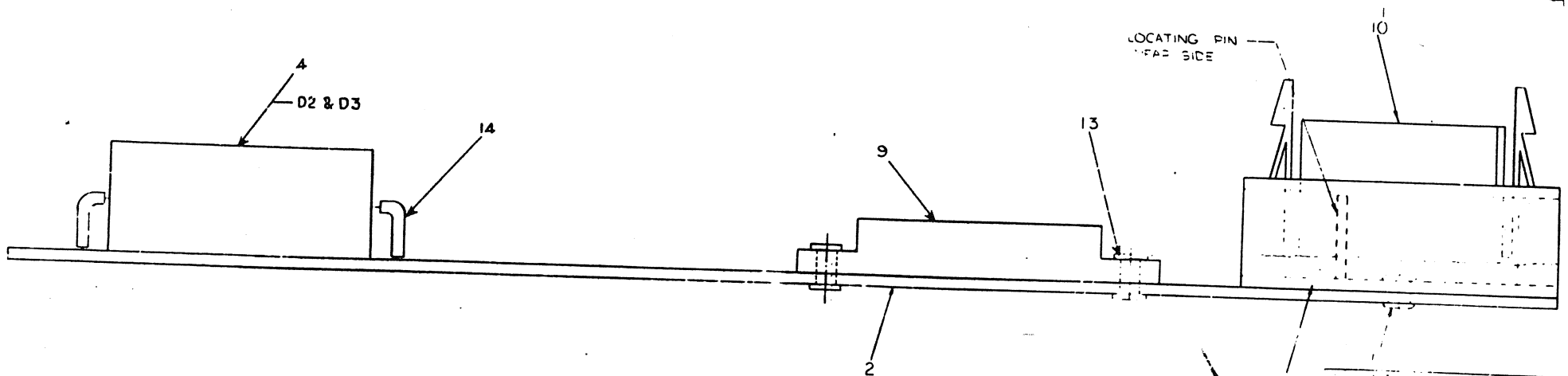
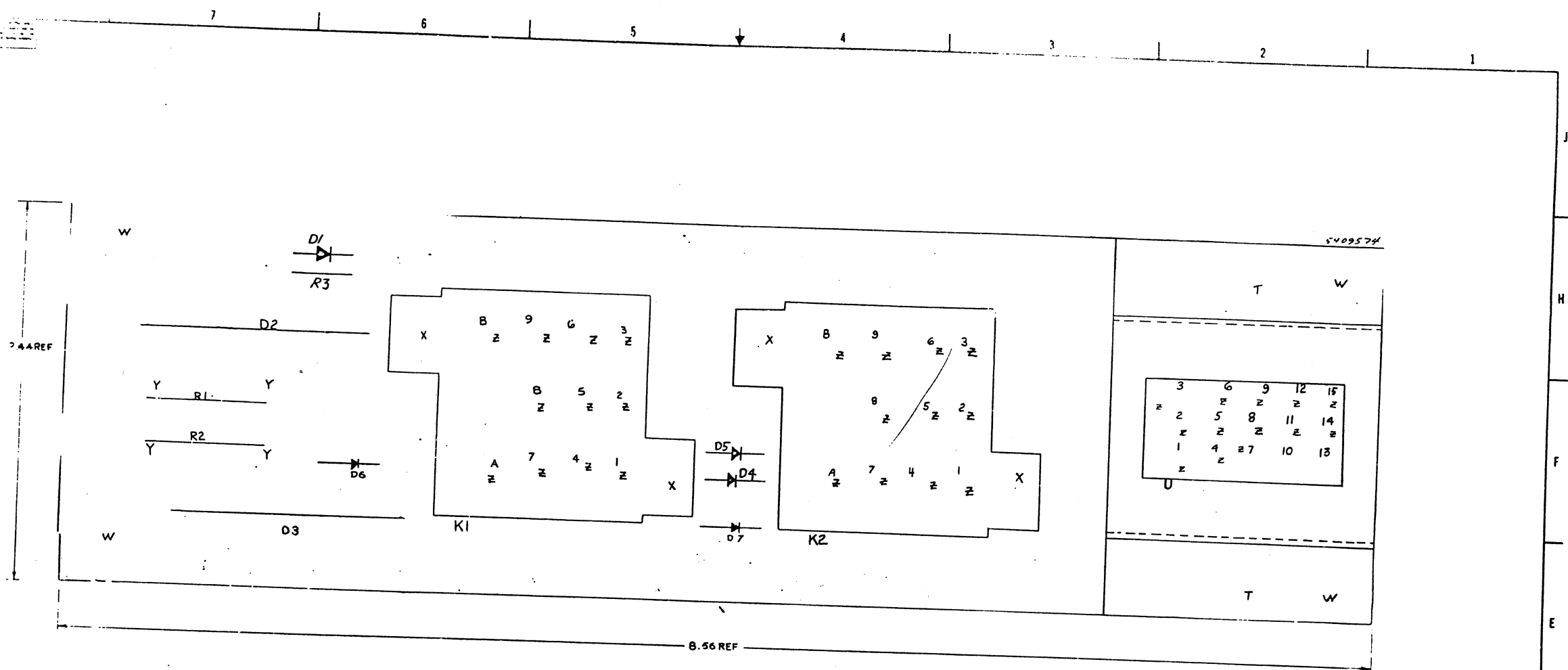
: SAFETY RELAY L AND BLOWER MTR  
RELAY OR ARE THE SAME SIGNAL.

3. SPINDLE MOTOR  
RELAY L AND DISK RELAY DR ARE  
THE SAME SIGNAL.

4 THIS MODULE MUST BE UI APPROVED



QTY	REF DESIGNATION	DESCRIPTION	PART NO.	ITEM NO.
PARTS LIST				
ETCH BOARD REV	F			
		DRN. <i>Boyer J</i> <i>DOLKETT</i>	DATE 12-9-71	 <b>DIGITAL EQUIPMENT CORPORATION</b> <small>MAYFARDE, MASSACHUSETTS</small>
		CHK'D.	DATE	
		ENG. <i>J. J. Quinn</i>	DATE 12-15-71	
		PROJ. ENG. <i>Don J. Jensen</i>	DATE 10-20-72	
		PROD. <i>Don J. Jensen</i>	DATE 10-20-72	
			DATE	
DEC NO		EIA NO		
CONVERSION CHART		SCALE		
SHEET		OF		
		SIZE/ CODE		
		D/C S		
		NUMBER		
		5409574-0-1		
		REV.		
		h		



ITEM NO.	QTY.	FROM PT.	TO PT.
1	1	1	2
2	1	2	3
3	1	3	4
4	1	4	5
5	1	5	6
6	1	6	7
7	1	7	8
8	1	8	9
9	1	9	10
10	1	10	11
11	1	11	12
12	1	12	13
13	1	13	14
14	1	14	15
15	1	15	16
16	1	16	17
17	1	17	18
18	1	18	19
19	1	19	20
20	1	20	21
21	1	21	22
22	1	22	23
23	1	23	24
24	1	24	25
25	1	25	26
26	1	26	27
27	1	27	28
28	1	28	29
29	1	29	30
30	1	30	31
31	1	31	32
32	1	32	33
33	1	33	34
34	1	34	35
35	1	35	36
36	1	36	37
37	1	37	38
38	1	38	39
39	1	39	40
40	1	40	41
41	1	41	42
42	1	42	43
43	1	43	44
44	1	44	45
45	1	45	46
46	1	46	47
47	1	47	48
48	1	48	49
49	1	49	50
50	1	50	51
51	1	51	52
52	1	52	53
53	1	53	54
54	1	54	55
55	1	55	56
56	1	56	57
57	1	57	58
58	1	58	59
59	1	59	60
60	1	60	61
61	1	61	62
62	1	62	63
63	1	63	64
64	1	64	65
65	1	65	66
66	1	66	67
67	1	67	68
68	1	68	69
69	1	69	70
70	1	70	71
71	1	71	72
72	1	72	73
73	1	73	74
74	1	74	75
75	1	75	76
76	1	76	77
77	1	77	78
78	1	78	79
79	1	79	80
80	1	80	81
81	1	81	82
82	1	82	83
83	1	83	84
84	1	84	85
85	1	85	86
86	1	86	87
87	1	87	88
88	1	88	89
89	1	89	90
90	1	90	91
91	1	91	92
92	1	92	93
93	1	93	94
94	1	94	95
95	1	95	96
96	1	96	97
97	1	97	98
98	1	98	99
99	1	99	100

CAUTION  
CHANGE COULD AFFECT U.L. LISTING

ITEM NO.	QTY.	REF. DESIGNATION	DESCRIPTION	PART NO.
1	1	RK05	RELAY SOCKET	1210684
2	1	K1, K2	RELAY COIL	1210684
3	1	R1, R2	RESISTOR 270 OHM 5%	1301516
4	1	D1, D3	DIODE 1N4148	1105775
5	1	D2, D4	DIODE 1N4148	1105775
6	1	D5, D6	DIODE 1N4148	1105775
7	1	D7	DIODE 1N4148	1105775
8	1	D8	DIODE 1N4148	1105775
9	1	D9	DIODE 1N4148	1105775
10	1	D10	DIODE 1N4148	1105775
11	1	D11	DIODE 1N4148	1105775
12	1	D12	DIODE 1N4148	1105775
13	1	D13	DIODE 1N4148	1105775
14	1	D14	DIODE 1N4148	1105775
15	1	D15	DIODE 1N4148	1105775
16	1	D16	DIODE 1N4148	1105775
17	1	D17	DIODE 1N4148	1105775
18	1	D18	DIODE 1N4148	1105775
19	1	D19	DIODE 1N4148	1105775
20	1	D20	DIODE 1N4148	1105775
21	1	D21	DIODE 1N4148	1105775
22	1	D22	DIODE 1N4148	1105775
23	1	D23	DIODE 1N4148	1105775
24	1	D24	DIODE 1N4148	1105775
25	1	D25	DIODE 1N4148	1105775
26	1	D26	DIODE 1N4148	1105775
27	1	D27	DIODE 1N4148	1105775
28	1	D28	DIODE 1N4148	1105775
29	1	D29	DIODE 1N4148	1105775
30	1	D30	DIODE 1N4148	1105775
31	1	D31	DIODE 1N4148	1105775
32	1	D32	DIODE 1N4148	1105775
33	1	D33	DIODE 1N4148	1105775
34	1	D34	DIODE 1N4148	1105775
35	1	D35	DIODE 1N4148	1105775
36	1	D36	DIODE 1N4148	1105775
37	1	D37	DIODE 1N4148	1105775
38	1	D38	DIODE 1N4148	1105775
39	1	D39	DIODE 1N4148	1105775
40	1	D40	DIODE 1N4148	1105775
41	1	D41	DIODE 1N4148	1105775
42	1	D42	DIODE 1N4148	1105775
43	1	D43	DIODE 1N4148	1105775
44	1	D44	DIODE 1N4148	1105775
45	1	D45	DIODE 1N4148	1105775
46	1	D46	DIODE 1N4148	1105775
47	1	D47	DIODE 1N4148	1105775
48	1	D48	DIODE 1N4148	1105775
49	1	D49	DIODE 1N4148	1105775
50	1	D50	DIODE 1N4148	1105775
51	1	D51	DIODE 1N4148	1105775
52	1	D52	DIODE 1N4148	1105775
53	1	D53	DIODE 1N4148	1105775
54	1	D54	DIODE 1N4148	1105775
55	1	D55	DIODE 1N4148	1105775
56	1	D56	DIODE 1N4148	1105775
57	1	D57	DIODE 1N4148	1105775
58	1	D58	DIODE 1N4148	1105775
59	1	D59	DIODE 1N4148	1105775
60	1	D60	DIODE 1N4148	1105775
61	1	D61	DIODE 1N4148	1105775
62	1	D62	DIODE 1N4148	1105775
63	1	D63	DIODE 1N4148	1105775
64	1	D64	DIODE 1N4148	1105775
65	1	D65	DIODE 1N4148	1105775
66	1	D66	DIODE 1N4148	1105775
67	1	D67	DIODE 1N4148	1105775
68	1	D68	DIODE 1N4148	1105775
69	1	D69	DIODE 1N4148	1105775
70	1	D70	DIODE 1N4148	1105775
71	1	D71	DIODE 1N4148	1105775
72	1	D72	DIODE 1N4148	1105775
73	1	D73	DIODE 1N4148	1105775
74	1	D74	DIODE 1N4148	1105775
75	1	D75	DIODE 1N4148	1105775
76	1	D76	DIODE 1N4148	1105775
77	1	D77	DIODE 1N4148	1105775
78	1	D78	DIODE 1N4148	1105775
79	1	D79	DIODE 1N4148	1105775
80	1	D80	DIODE 1N4148	1105775
81	1	D81	DIODE 1N4148	1105775
82	1	D82	DIODE 1N4148	1105775
83	1	D83	DIODE 1N4148	1105775
84	1	D84	DIODE 1N4148	1105775
85	1	D85	DIODE 1N4148	1105775
86	1	D86	DIODE 1N4148	1105775
87	1	D87	DIODE 1N4148	1105775
88	1	D88	DIODE 1N4148	1105775
89	1	D89	DIODE 1N4148	1105775
90	1	D90	DIODE 1N4148	1105775
91	1	D91	DIODE 1N4148	1105775
92	1	D92	DIODE 1N4148	1105775
93	1	D93	DIODE 1N4148	1105775
94	1	D94	DIODE 1N4148	1105775
95	1	D95	DIODE 1N4148	1105775
96	1	D96	DIODE 1N4148	1105775
97	1	D97	DIODE 1N4148	1105775
98	1	D98	DIODE 1N4148	1105775
99	1	D99	DIODE 1N4148	1105775
100	1	D100	DIODE 1N4148	1105775

EQUIPMENT CORPORATION  
DECPACK  
MOTOR RELAYS  
EIA 5409574-0-0