

digital

RK05J

Engineering Drawings

Digital Equipment Corporation

109008

The material herein is for information purposes only and is subject to change without notice. Digital Equipment Corporation assumes no responsibility for any errors which may appear herein.

These drawings and specifications herein are the property of Digital Equipment Corporation and shall not be reproduced or copied or used in whole or in part as the basis for the manufacture or sale of items without written permission.

Copyright © 1975, Digital Equipment Corporation

This drawing and specifications, herein, are the property of Digital Equipment Corporation and shall not be reproduced or copied in whole or in part as the basis for the manufacture or sale of items without written permission.

NOTE:

TERMINATOR OR DISK BUS CABLE CONNECTOR MAY BE INTERCHANGED BETWEEN SLOTS 7 AND 8.

	1	2	3	4	5	6	7	8
USAGE	G180	M7700	M7702	M7701	G938	M933	M930 *	M929
	2	2	2	2	2	2	2	2
	READ/	INDEX &	TRACK	CONTROL &	POSITION	CHASSIS	TERMINATOR	DISK BUS
	WRITE	SECTOR	ADDRESS	INTERLOCK	SERVO	CONNECTOR		CABLE
			DIFFERENCE		PRE AMP			CONNECTOR

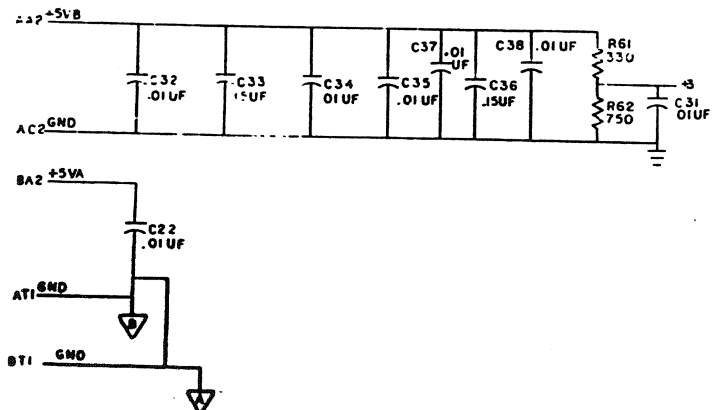
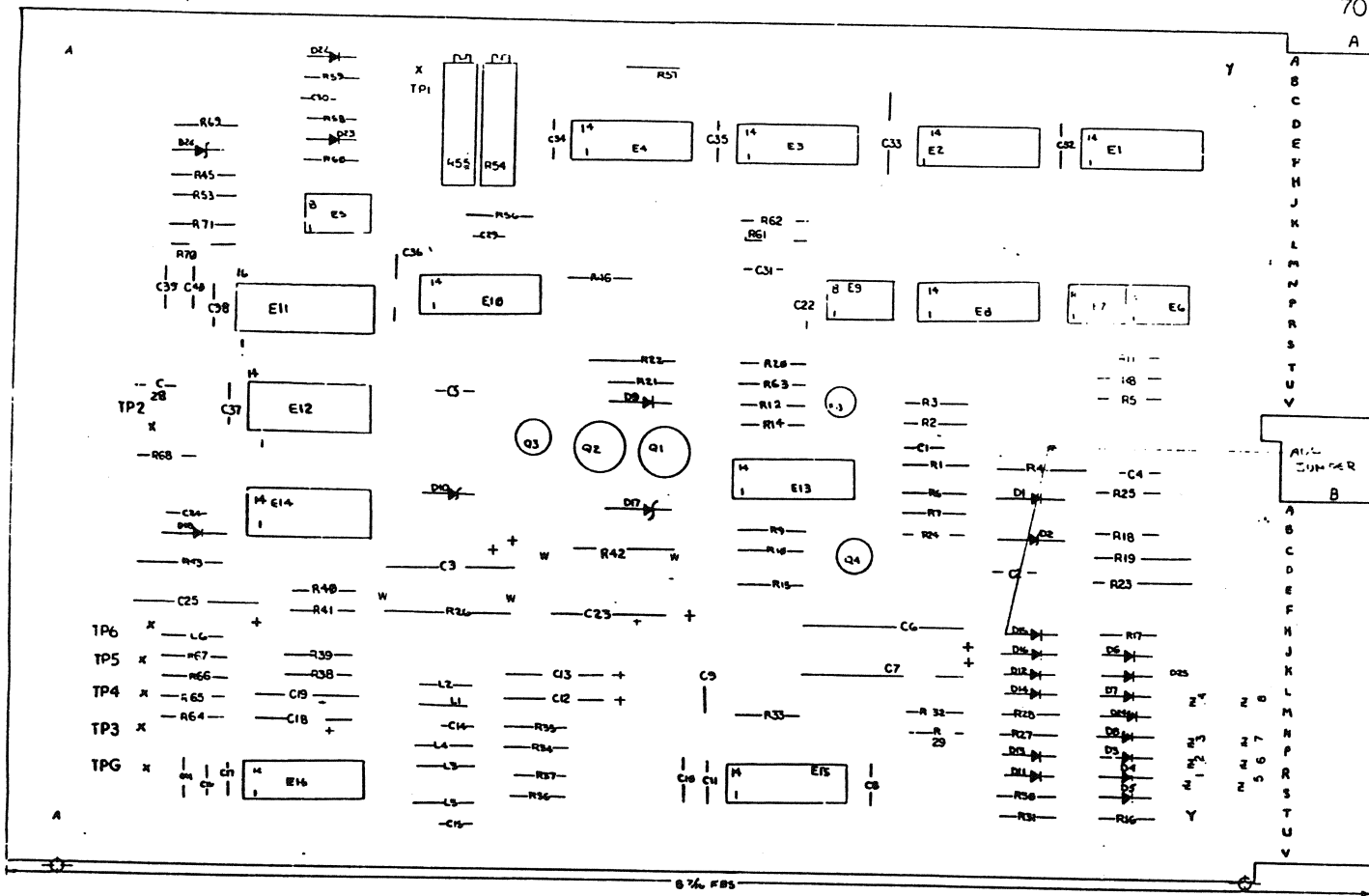
* IF MORE THAN ONE DRIVE IS USED, M930 IS REPLACED BY M929 (BC11A), M930 IS USED IN THE LAST DRIVE ON THE BUS.

REV.	CHANGE NO.	CHK
A	1	1
B	2	2
C	3	3
D	4	4

FIRST USED ON OPTION/MODEL RK05		QTY.	DESCRIPTION	PART NO.	ITEM NO.
UNLESS OTHERWISE SPECIFIED DIMENSIONS IN INCHES TOLERANCES		PARTS LIST			
DECIMALS	ANGLES	TITLE			
.XXX = .006	20° 30'	MODULE UTILIZATION			
.XX = .02		digital EQUIPMENT CORPORATION MAYNARD, MASSACHUSETTS			
.X = .1		DATE 11-2-71			
REMOVE BURRS AND BREAK SHARP CORNERS SURFACE QUALITY		DATE 11-2-71			
MATERIAL		DATE 11-2-71			
FINISH		DATE 11-2-71			
NEXT HIGHER ASSY.		DATE 11-2-71			
B-DD-RK05-0		DATE 11-2-71			
SCALE NONE		DATE 11-2-71			
SHEET OF		DATE 11-2-71			
DIST.		DATE 11-2-71			

NOTES:

NOTE
DO NOT INSERT
HANDLE HOLE EYELETS
ON OUTSIDE HANDLE
HOLES (2 PLCS)



DEC 360	1	8
DEC 75-52	4	8
IC TYPE	GND	+5V
GND AND 5V ARE USUALLY PIN 7 AND 14 RESPECTIVELY EXCEPTS ARE STATED ABOVE		
IC PIN LOCATIONS		

1	D26	DIODE IN748A (3.9V ZENER)	1100122	79
1	R69	RES. 180 1/4W 5%	1301322	78
2	R7, R10	RES. 100 1/4W 5%	1300229	77
1		NOISE SHIELD	5009893	76
2		HANDLE, FLIP CHIP-GREEN	9008337-01	75
7	TPG, TP1 THRU TP6	SWAGE LUG	9007791	74
2		HEX NUT, NYLON, *2-56	9007263	73
2		EYELET *6S4-7	9006732	72
2		INTERNAL LOCK WASHER *2-56	9006631	71
2		HEX NUT *2-56	9006555	70
2		SCREW 4/40X3/8	9006011-4	69
2		SCREW PAN HD *2-56X5/16	9006002-1	68
2		KEP NUT 4/40	9006557	67

3	E6, E9	I.C. DEC 75452	1910645	66
2	E15, E16	I.C. DEC 733	1910644	65
1	E14	I.C. DEC 1414	1910337	64
1	E5	I.C. DEC 741	1910298	63
1	E1	I.C. DEC 8881	1909705	62
2	E2, E8	I.C. DEC 380	1909485	61
1	E10	I.C. DEC 9601	1909373	60
1	E13	I.C. DEC 7472	1905588	59
2	E4, E12	I.C. DEC 7400	1905575	58
1	E3	I.C. DEC 7474	1905547	57
1	L6	INDUCTOR 120UH	1610663	56
2	L1, L2	INDUCTOR 56UH	1610661	55
3	L3, L4, L5	INDUCTOR 100UH	1610662	54
1	Q3	TRANSISTOR DEC 6534C	1503409-02	53
1	Q4	TRANSISTOR DEC 3009B	1503100	52
2	Q1, Q2	TRANSISTOR 2N2904	1501742	51
1	R13	POT 1K 1/2W 20% 62PR	1309150-03	49
2	R54, 55	POT 10K 3/4W 10% 78PR	1309143-10	48
2	R16, R17	RES. 27K 1/4W 5%	1305346	47
2	R27, R28	RES. 8.2K 1/4W 5%	1303179	46
1	R60	RES. 220K 1/4W 5%	1302092	45
1	R4	RES. 270 1/2W 5%	1300285	44
2	R40, P41	RES. 560 1/4W 5%	1301690	43
6	R6, 9, 45, 53, 70, 71	RES. 5.6K 1/4W 5%	1301874	42
1	R11	RES. 1.1K 1/4W 5%	1301475	41
1	R58	RES. 3.3K 1/4W 5%	1300439	40
1	R62	RES. 750 1/4W 5%	1301401	39
2	R15, R21	RES. 1.2K 1/4W 5%	1301320	38
2	R30, R31	RES. 15K 1/4W 5%	1300496	37
6	R5, 8, 18, 38, 39, 57	RES. 10K 1/4W 5%	1300479	36
1	R59	RES. 4.7K 1/4W 5%	1300447	35
1	E11	I.C. DEC. 74123	1910436	34
16	R1, R2, R3, R2C, R34-37	RES. 1K 1/4W 5%	1300365	33
2	R46, R56, R63-68			
2	R24, R14	RES. 470 1/4W 5%	1300315	31
1	R43	RES. 470 1/2W 5%	1300315	30
3	R22, R25, R61	RES. 330 1/4W 5%	1301295	29
2	R29, R32	RES. 220 1/4 5%	1300271	28
2	R16, R42	RES. 180 1W 5%	1300262	27
1	R19	RES. 180 1/2W 5%	1300260	26
1	R12	RES. 150 1/4W 5%	1300250	25
1	R23	RES. 150 1/2W 5%	1301249	24
1	R33	RES. 68 1/4W 5%	1300219	23
8	I-B	GOLD WIREWRAP PINS	1210355-1	22
18	D1, D3-9, D11-16, D22-25	DIODE D672	1105275	21
1	D2	DIODE IN 751A (5.1V ZENER)	110954	20
3	D10, D17, D18	DIODE IN 753A (6.2V ZENER)	1102421	19
13	C9, C33, C36	CAP. 15UF 50V 10% POLYCARBONATE	1010031	17
1	C15	CAP. 18PF 100V 5% D.M.	1002608	16
4	C12, C13, C18, C19	CAP. 0.1UF 50V AXIAL	1001610-00	15
14	C4, 10, 11, 16, 17, 22, 24, 29, 31	CAP. 0.1UF 100V 20% DISC	1001610-01	14
2	C6, C7	CAP. 10UF 35V 20% S. TANT	1000069	13
3	C3, C23, C25	CAP. 6.8UF 35V 20% S. TANT	1000067	12
1	C2	CAP. 680PF 100V 5% D.M.	1000026	11
2	C5, C30	CAP. 470PF 100V 5% D.M.	1000024	10
1	C29	CAP. 150PF 100V 5% D.M.	1000019	9
1	C41	CAP. 27PF 100V 5% D.M.	1001735	8
1	C14	CAP. 56PF 100V 5% D.M.	1000012	7
3	C1, C39, C40	CAP. 47PF 100V 5% D.M.	1000011	6
1	C8	CAP. 18 PF 100V 5% D.M.	1002608	5
1		ETCHED CIRCUIT BOARD	5009743	4
1		MODULE ECO HISTORY	B-MH-G180-0-6	3
1		ASSY/ DRILLING HOLE LAYOUT	E-AH-G180-0-5	2
1		X-Y COORDINATE HOLE LOCATION	X-CO-G180-0-4	1

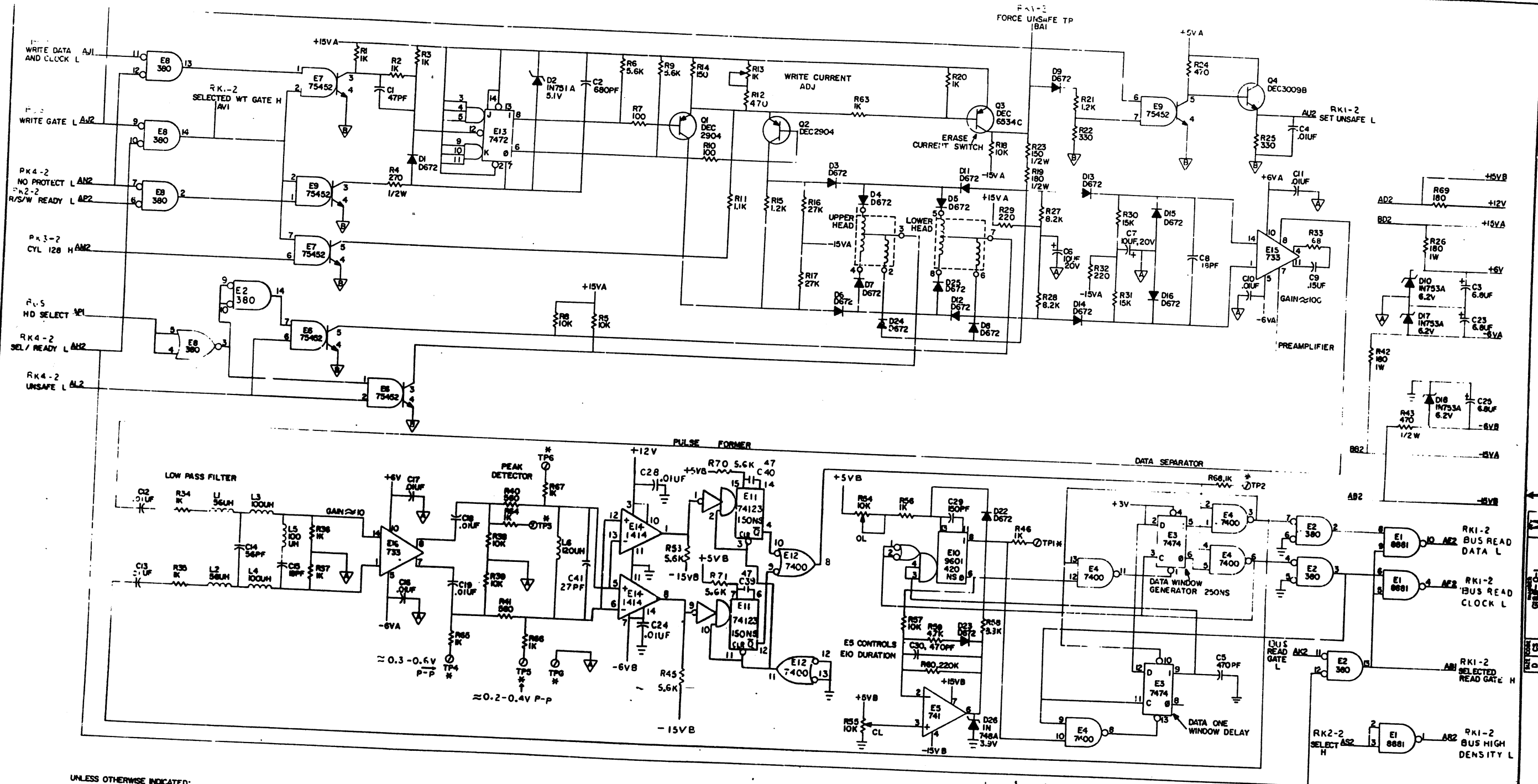
QTY	REF. DESIGNATION	DESCRIPTION	PART NO.	ITEM NO.
PARTS LIST				
1	ETCH BOARD REV.	L		
SEMICONDUCTOR CONVERSION CHART				
DEC NO.	EIA NO.	DEC NO.	EIA NO.	
2N2904	2N2118A	IN746A	SAME	
DEC 3009B	2N3009	IN753A	SAME	
DEC 6534C	MP36534	IN751A	SAME	
		D672	IN3653	

DRN. R. DOUGLETTE
CHKD. NANCY MORSE
ENL. DAVE JENSEN
PROJ. ENG. D. KAALSBORG
PRD.

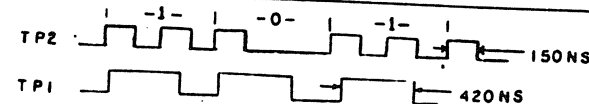
DATE 10-22-71
DATE 11-30-71
DATE 1-22-72
DATE 1-22-72

TITLE
DEC PACK READ/
WRITE

SCALE
SHEET 1 OF 2
D/C S
G180-0-1
REV. M



UNLESS OTHERWISE INDICATED:
 * INDICATES SWAGE LUG
 ▽ = ANALOG GND "A" BTI
 ▽ = ANALOG GND "B" ATI
 ⊥ = DIGITAL GND AC2
 --- = COMPONENTS NOT MOUNTED ON BOARD
 ALL TIMES INDICATED ARE NOMINAL



REV	DATE	BY	CHK
1	10/1/71	W. J. H.	W. J. H.

TRANSDISTOR & DIODE CONVERSION CHART			
DATE	10/1/71	BY	W. J. H.
DATE	10/1/71	BY	W. J. H.
DATE	10/1/71	BY	W. J. H.
DATE	10/1/71	BY	W. J. H.
DATE	10/1/71	BY	W. J. H.
DATE	10/1/71	BY	W. J. H.
DATE	10/1/71	BY	W. J. H.
DATE	10/1/71	BY	W. J. H.
DATE	10/1/71	BY	W. J. H.
DATE	10/1/71	BY	W. J. H.

SLOT -1

DEC PACK READ/WRITE

EQUIPMENT CORPORATION

9186-0-1

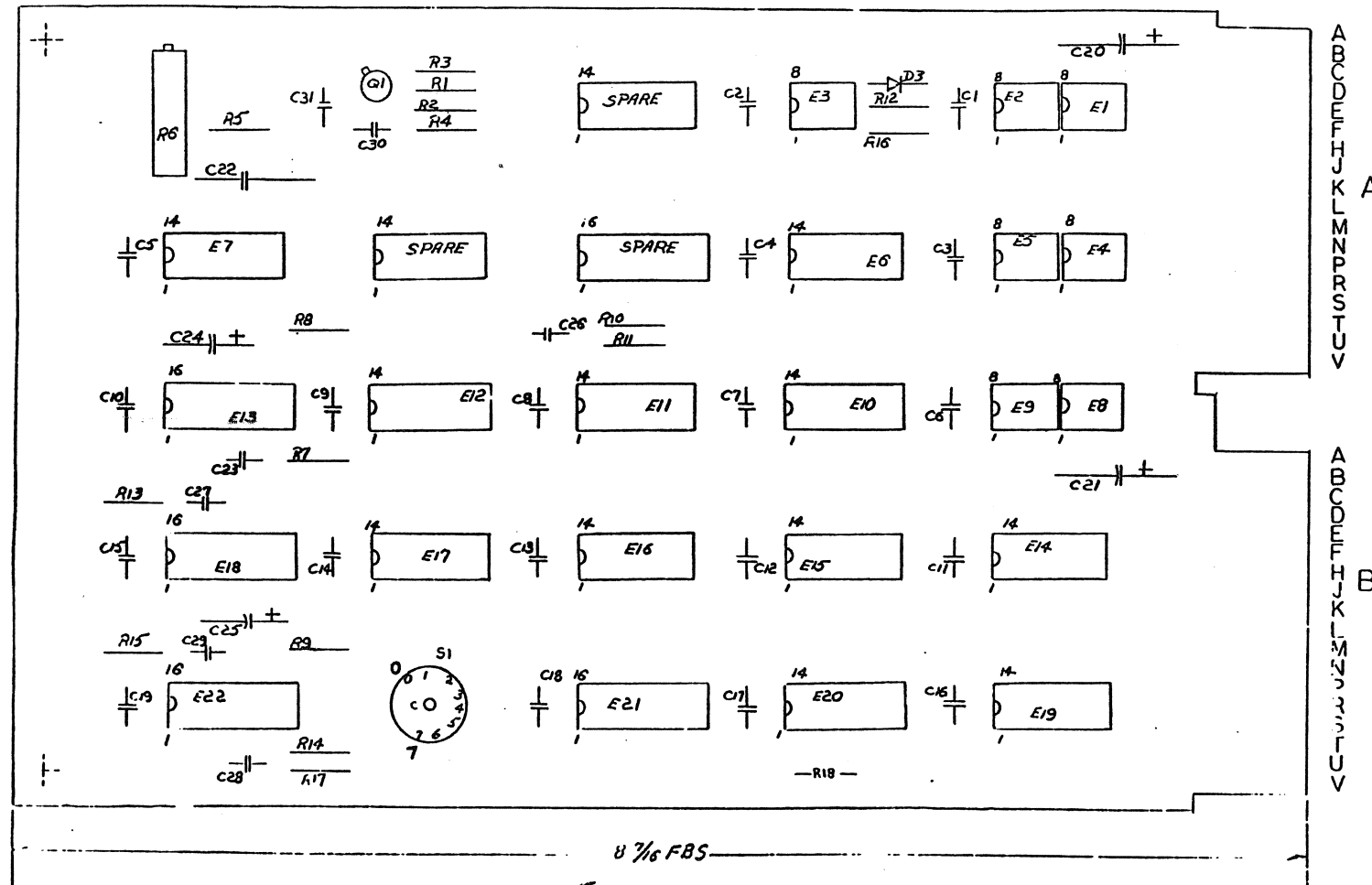
SHEET 2 OF 2

THIS SCHEMATIC IS FOR TEST AND MAINTENANCE PURPOSES THE
RESULTS ARE PROPRIETARY IN NATURE AND SHOULD BE TREATED ACCORDINGLY
UNLESS OTHERWISE NOTED 1971 BY DIGITAL EQUIPMENT CORPORATION

1-0-0021M 10001 10001

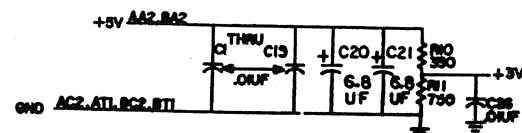
NOTES:

1. ITEM #23 CAN BE REPLACED BY A DEC 6534C(1503409-02)
TRANSISTOR IF NEEDED.



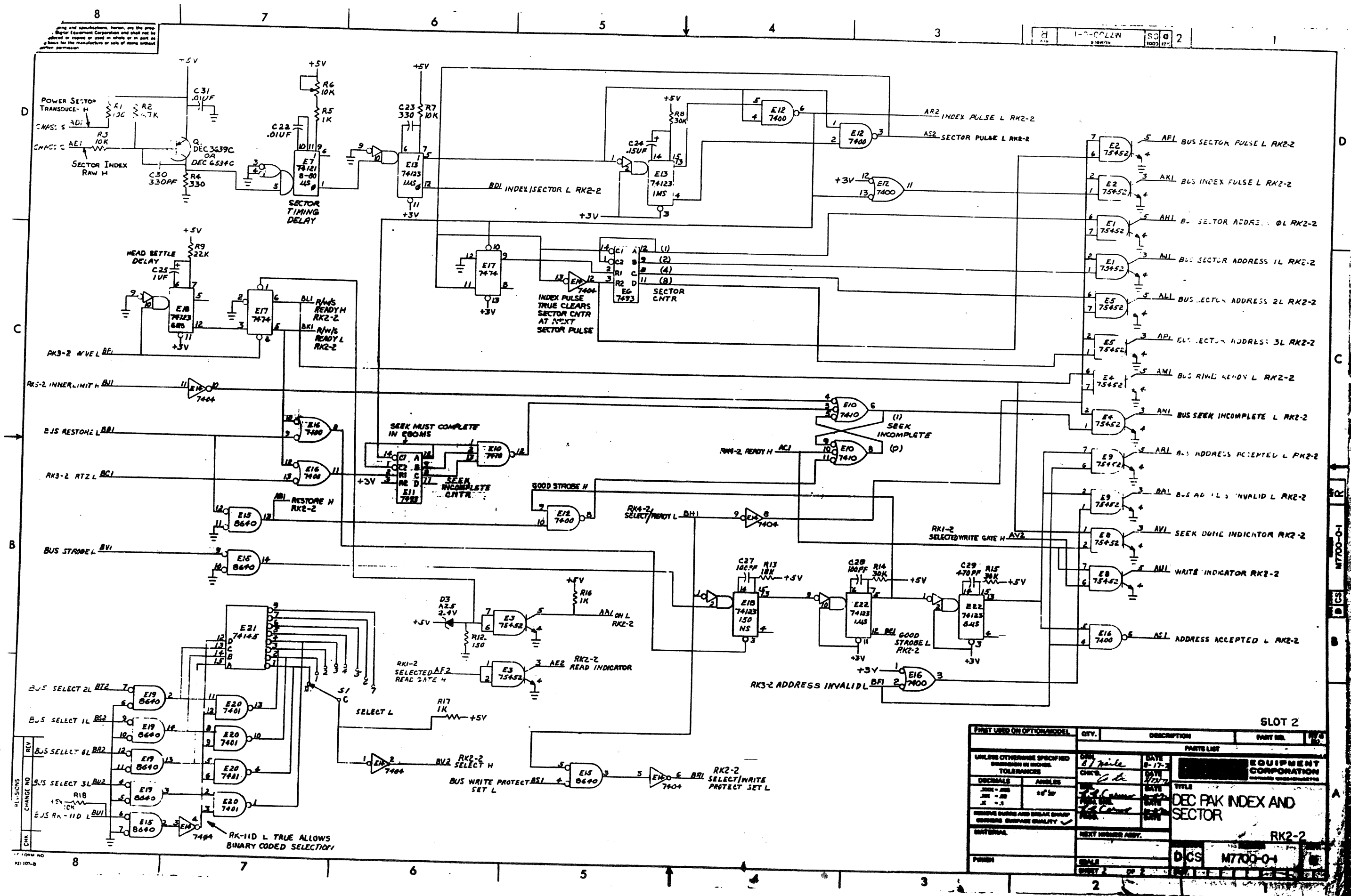
NOTES:

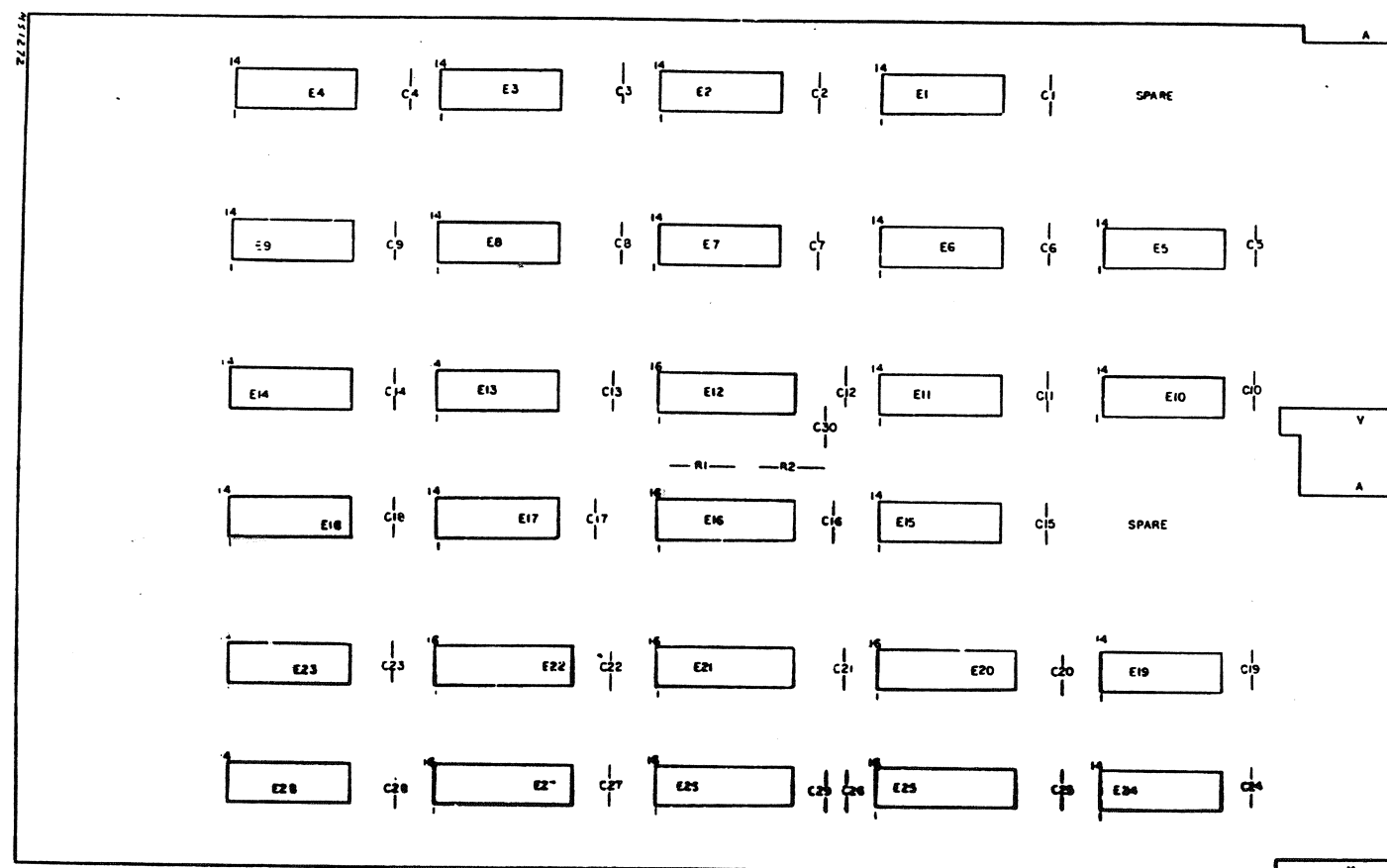
PN1 - GND ON E2, E3, E11, E13
PN4 - +10V ON E4, E7, E20, E21, E23
PN5 - GND ON E13, E4, E9
PN6 - +10V ON E20, E21, E16
PN10 - GND ON E8, E12
PN15 - +10V ON E8, E12
PN1 - GND ON E22
PN8 - +10V ON E8, E12
PN16 - +10V ON E8, E12, E19



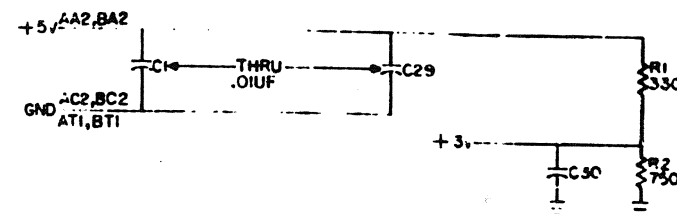
QTY	REP. DESIGNATION	DESCRIPTION	PARTS LIST	DEC PART NO.
2	C20, 21	CAP. 100PF 50V 20%	1000047	40
1	R2	RESISTOR 1/2W 1K 5%	1000047	10
1	C22	CAP. 100PF 100V 10% NYLON	1000047	10
2				
4		HANDLING, FLIP CHIP - MATING	1000047	10
1	E20	1.5G. DMC 7401	1000047	10
1	E13, E22	1.5G. DMC 7401	1000047	10
7	E1-B, E8, E9	1.5G. DMC 7401	1000047	10
1	E7	1.5G. DMC 7401	1000047	10
1	E8	1.5G. DMC 7401	1000047	10
1	E14	1.5G. DMC 7401	1000047	10
2	E15, 19	1.5G. DMC 7401	1000047	10
1	E5, 11	1.5G. DMC 7401	1000047	10
1	E10	1.5G. DMC 7401	1000047	10
2	E16, 18	1.5G. DMC 7401	1000047	10
1	E17	1.5G. DMC 7401	1000047	10
1	E1	1.5G. DMC 7401	1000047	10
1	E11	1.5G. DMC 7401	1000047	10
1	E12	1.5G. DMC 7401	1000047	10
1	E13	1.5G. DMC 7401	1000047	10
1	E14	1.5G. DMC 7401	1000047	10
1	E15	1.5G. DMC 7401	1000047	10
1	E16	1.5G. DMC 7401	1000047	10
1	E17	1.5G. DMC 7401	1000047	10
1	E18	1.5G. DMC 7401	1000047	10
1	E19	1.5G. DMC 7401	1000047	10
1	E20	1.5G. DMC 7401	1000047	10
1	E21	1.5G. DMC 7401	1000047	10
1	E22	1.5G. DMC 7401	1000047	10
1	E23	1.5G. DMC 7401	1000047	10
1	E24	1.5G. DMC 7401	1000047	10
1	E25	1.5G. DMC 7401	1000047	10
1	E26	1.5G. DMC 7401	1000047	10
1	E27	1.5G. DMC 7401	1000047	10
1	E28	1.5G. DMC 7401	1000047	10
1	E29	1.5G. DMC 7401	1000047	10
1	E30	1.5G. DMC 7401	1000047	10
1	E31	1.5G. DMC 7401	1000047	10
1	E32	1.5G. DMC 7401	1000047	10
1	E33	1.5G. DMC 7401	1000047	10
1	E34	1.5G. DMC 7401	1000047	10
1	E35	1.5G. DMC 7401	1000047	10
1	E36	1.5G. DMC 7401	1000047	10
1	E37	1.5G. DMC 7401	1000047	10
1	E38	1.5G. DMC 7401	1000047	10
1	E39	1.5G. DMC 7401	1000047	10
1	E40	1.5G. DMC 7401	1000047	10
1	E41	1.5G. DMC 7401	1000047	10
1	E42	1.5G. DMC 7401	1000047	10
1	E43	1.5G. DMC 7401	1000047	10
1	E44	1.5G. DMC 7401	1000047	10
1	E45	1.5G. DMC 7401	1000047	10
1	E46	1.5G. DMC 7401	1000047	10
1	E47	1.5G. DMC 7401	1000047	10
1	E48	1.5G. DMC 7401	1000047	10
1	E49	1.5G. DMC 7401	1000047	10
1	E50	1.5G. DMC 7401	1000047	10
1	E51	1.5G. DMC 7401	1000047	10
1	E52	1.5G. DMC 7401	1000047	10
1	E53	1.5G. DMC 7401	1000047	10
1	E54	1.5G. DMC 7401	1000047	10
1	E55	1.5G. DMC 7401	1000047	10
1	E56	1.5G. DMC 7401	1000047	10
1	E57	1.5G. DMC 7401	1000047	10
1	E58	1.5G. DMC 7401	1000047	10
1	E59	1.5G. DMC 7401	1000047	10
1	E60	1.5G. DMC 7401	1000047	10
1	E61	1.5G. DMC 7401	1000047	10
1	E62	1.5G. DMC 7401	1000047	10
1	E63	1.5G. DMC 7401	1000047	10
1	E64	1.5G. DMC 7401	1000047	10
1	E65	1.5G. DMC 7401	1000047	10
1	E66	1.5G. DMC 7401	1000047	10
1	E67	1.5G. DMC 7401	1000047	10
1	E68	1.5G. DMC 7401	1000047	10
1	E69	1.5G. DMC 7401	1000047	10
1	E70	1.5G. DMC 7401	1000047	10
1	E71	1.5G. DMC 7401	1000047	10
1	E72	1.5G. DMC 7401	1000047	10
1	E73	1.5G. DMC 7401	1000047	10
1	E74	1.5G. DMC 7401	1000047	10
1	E75	1.5G. DMC 7401	1000047	10
1	E76	1.5G. DMC 7401	1000047	10
1	E77	1.5G. DMC 7401	1000047	10
1	E78	1.5G. DMC 7401	1000047	10
1	E79	1.5G. DMC 7401	1000047	10
1	E80	1.5G. DMC 7401	1000047	10
1	E81	1.5G. DMC 7401	1000047	10
1	E82	1.5G. DMC 7401	1000047	10
1	E83	1.5G. DMC 7401	1000047	10
1	E84	1.5G. DMC 7401	1000047	10
1	E85	1.5G. DMC 7401	1000047	10
1	E86	1.5G. DMC 7401	1000047	10
1	E87	1.5G. DMC 7401	1000047	10
1	E88	1.5G. DMC 7401	1000047	10
1	E89	1.5G. DMC 7401	1000047	10
1	E90	1.5G. DMC 7401	1000047	10
1	E91	1.5G. DMC 7401	1000047	10
1	E92	1.5G. DMC 7401	1000047	10
1	E93	1.5G. DMC 7401	1000047	10
1	E94	1.5G. DMC 7401	1000047	10
1	E95	1.5G. DMC 7401	1000047	10
1	E96	1.5G. DMC 7401	1000047	10
1	E97	1.5G. DMC 7401	1000047	10
1	E98	1.5G. DMC 7401	1000047	10
1	E99	1.5G. DMC 7401	1000047	10
1	E100	1.5G. DMC 7401	1000047	10

TRANSISTOR & DIODE CONVERSION CHART		TITLE	
DEC	EN	DEC	EN
EQUIPMENT CORPORATION		RK2-1	
M7700-0-1		DEC PAK INDEX AND SECTOR	
PRINTED CIRCUIT BOARD		M7700-0-1	
PARTS LIST		M7700-0-1	





UNLESS OTHERWISE INDICATED:
 PIN 8 = +5V
 PIN 1 = GND
 PIN 5 = +5V
 PIN 12 = GND DEC 7483
 PIN 16 = +5V
 PIN 8 = GND DEC 74175
 PIN 16 = +5V DEC 74193
 PIN 9 = GND
 PIN 14 = +5V
 PIN 7 = GND ALL OTHER IC'S



1		EYELET #08L-7	9006732	22
2		HANDIE, FLIP CHIP - MAGENTA	9008337-06	21
3	E20, E25	1.C. DEC 74175	1910651	20
4	E1, E17	1.C. DEC 74137	1910091	19
5	E14, E24	1.C. DEC 740	1909485	18
6	E12, E41	1.C. DEC 74193	1910018	17
7	E23, E28	1.C. DEC 7486	1910011	16
8	E21, E22, E26, E27	1.C. DEC 7463	1909932	15
9	E7, E11	1.C. DEC 7404	1909666	14
10	E4	1.C. DEC 7402	1909004	13
11	E14	1.C. DEC 7440	1905575	12
12	E1C, E18	1.C. DEC 741C	1905576	11
13	E1, E2, E1C, E13	1.C. DEC 7400	1905577	10
14	E1, E4, E9, E9	1.C. DEC 7474	1905547	9
15	R1	RES. 750 W 5K	1301401	8
16	R4	RES. 330 W 5K	1300295	7
17		TRIPILET	1210244-0	6
18	C1 - C10	CAP. .011V 100V 20% DISC	1001680	5
19		ETCHED CIRCUIT BOARD	0009710	4
20		MODULE BCO HISTORY	B-HH-W7702-0-6	3
21		ASW/DRILLING HOLE LAYOUT	E-AH-W7702-0-5	2
22		X-Y COORDINATE HOLE LOCATION	E-CB-W7702-0-4	1

QTY	REF DESIGNATION	DESCRIPTION	PART NO.	ITEM NO.
PARTS LIST				
ETCH BOARD REV	C			
		DRAWN BY J. Dwyer DATE 11-7-71	EQUIPMENT CORPORATION MAYFIELD MASSACHUSETTS	TITLE DEC PACK CYL ADDR AND DIFF
		CHECKED BY [Signature] DATE 11-7-71		
		DESIGNED BY [Signature] DATE 12-16-71		
		MATERIALS BY [Signature] DATE 12-16-71		
		PHOTO BY [Signature] DATE 12-16-71		
		NEXT HIGHER ASSY		
DEC NO.	EIA NO.	RK3-1		
CONVERSION CHART		SHEET 1 OF 2	DCS M7702-0-1	REV C

