

CUSTOMER PRINT SET INDEX

THIS IS PRINT SET

X				
---	--	--	--	--

SEQUENCE

TB-DD-RK05-0 SHEET #1 ONLY

SEQUENCE

MFG. PRINT SET

CHASSIS WIRING

D-BD-RK05-0-1

H743 POWER SUPPLY

B-DD-H743-0

WIRE LIST

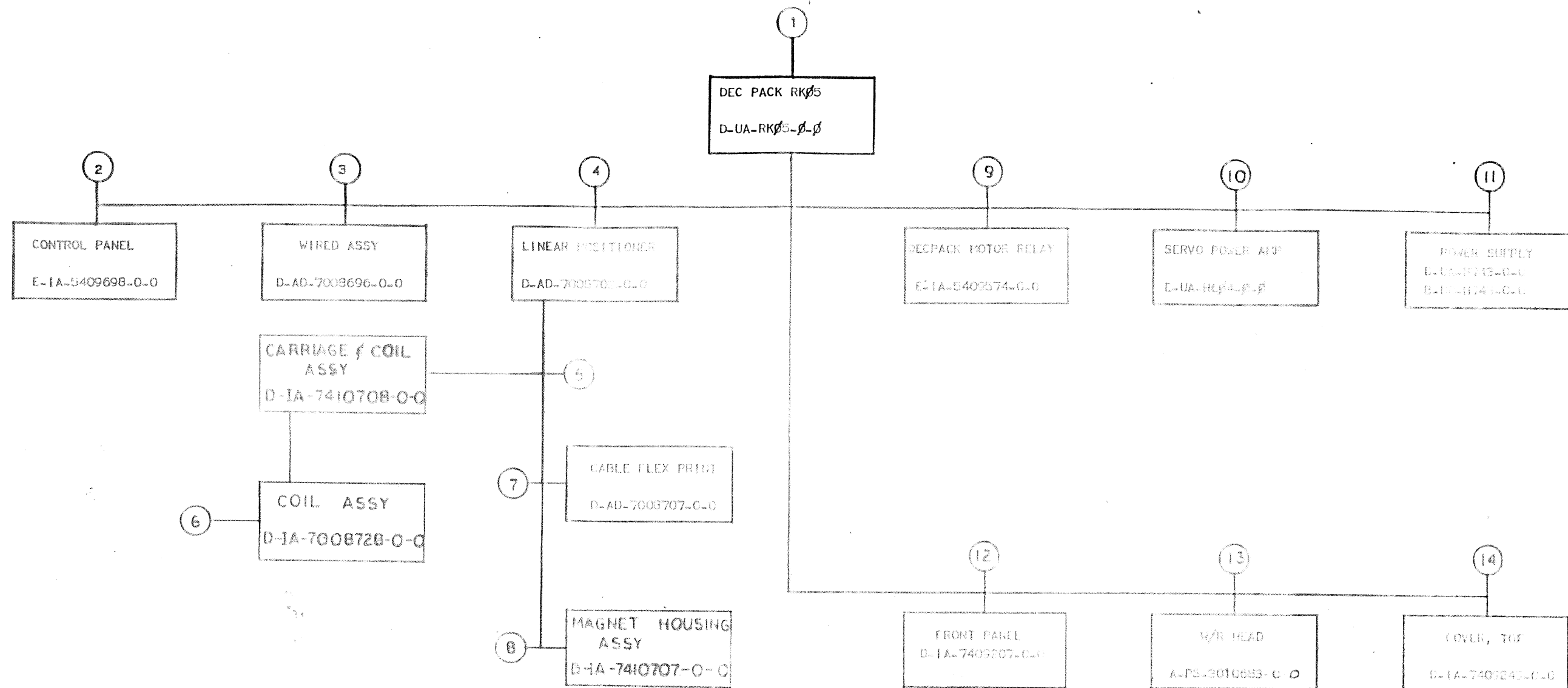
K-WL-RK05-0-3

[illegible]

REVISIONS		
DATE	CHG. NO.	REV
	RK05-14	A
	RK05-16	B
	RK05-23	C
	RK05-26	D
	RK05-28	E
	RK05-30	F
	RK05-31	H
	RK05-32	J
	RK05-34	K
	RK05-35	L
	RK05-38	M
	RK05-39	N
	RK05-40	P
	RK05-41	R
	RK05-42	S
	RK05-45	T
	RK05-46	U
	RK05-48	V
	RK05-50	W
	RK05-51	Y
	RK05-52	Z
	RK05-53	AA
	RK05-54	AB
	RK05-55	AC
	RK05-56	AD
	RK05-59	AE
	RK05-60	AF

USED ON OPTION/MODEL		DRN. J. FLEMING	DATE 1/26/72	TITLE DECPACK ASSY
		CHK'D <i>[Signature]</i>	DATE 5-2-72	
		PROJ ENG. <i>[Signature]</i>	DATE 5-2-72	
		PROD. <i>[Signature]</i>	DATE 5-4-72	
		FIELD SERV.	DATE 1-1-73	

SIZE	CODE	NUMBER	REV.
B	DD	1000-0	AF

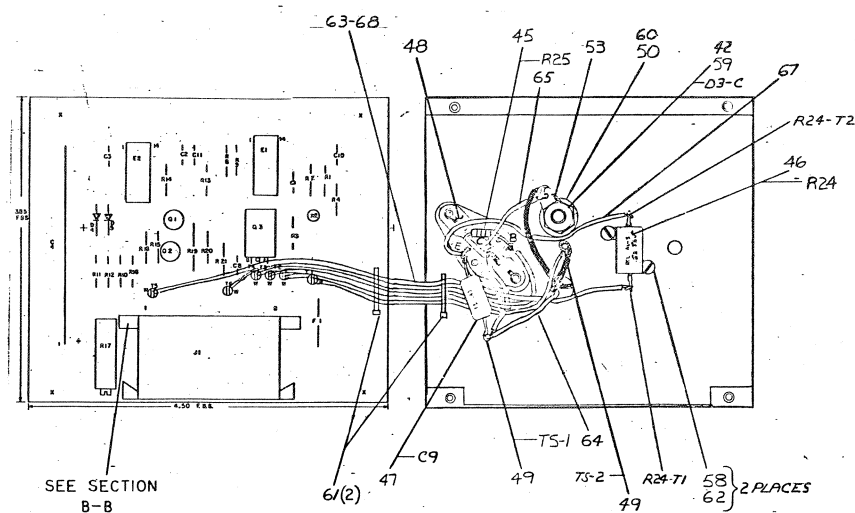
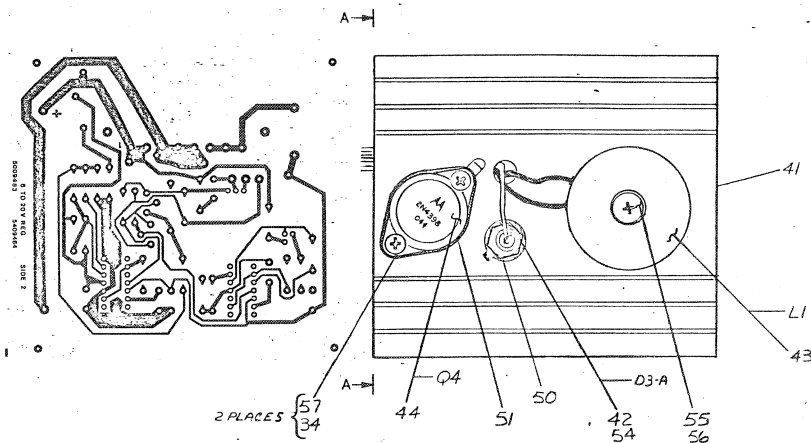
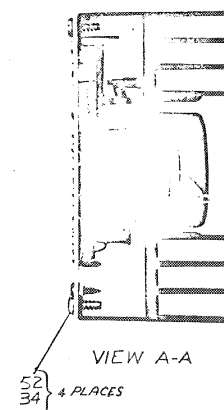
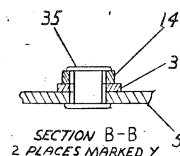


CUSTOMER PRINT SET					MECHANICAL					CUSTOMER PRINT SET					MECHANICAL						
REV	NO	OF	SH	NO	REV	NO	OF	SH	NO	REV	NO	OF	SH	NO	REV	NO	OF	SH	NO		
DRAWING NO.					DESCRIPTION					DRAWING NO.					DESCRIPTION						
5 D-1A-7410708-0-0					1	CARRIAGE AND COIL ASSY					C 11 B-DD-H743-0					1	POWER SUPPLY				
E-PS-1210783-0-0					1	CARRIAGE CASTING															
B-MD-7409315-0-0					1	CARRIAGE (MACHINING)															
B-MD-7409320-0-0					1	HOLDER, BEARING															
B-MD-7409322-0-0					1	LEAF SPRING															
B-PS-1210805-0-0					1	HOLDER, BEARING (EXTRUSION)															
6 C-1A-7008728-0-0					1	COIL ASSY															
B-PS-1210809-0-0					1	BOBBIN															

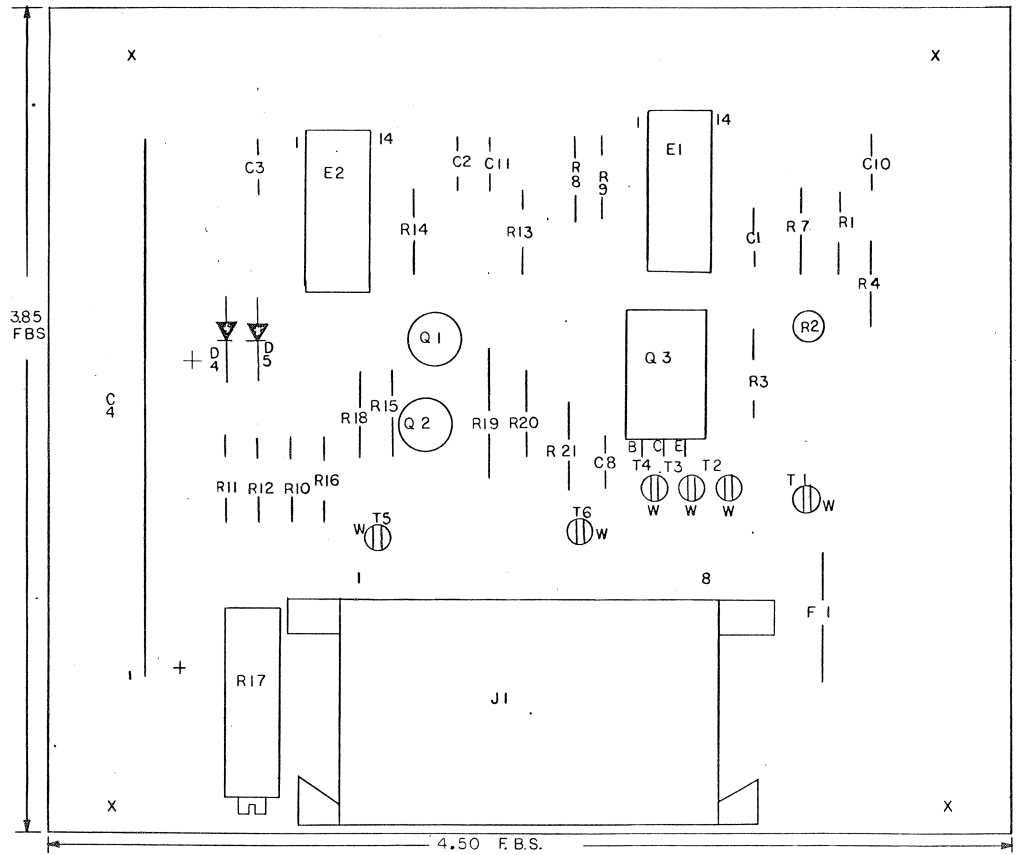
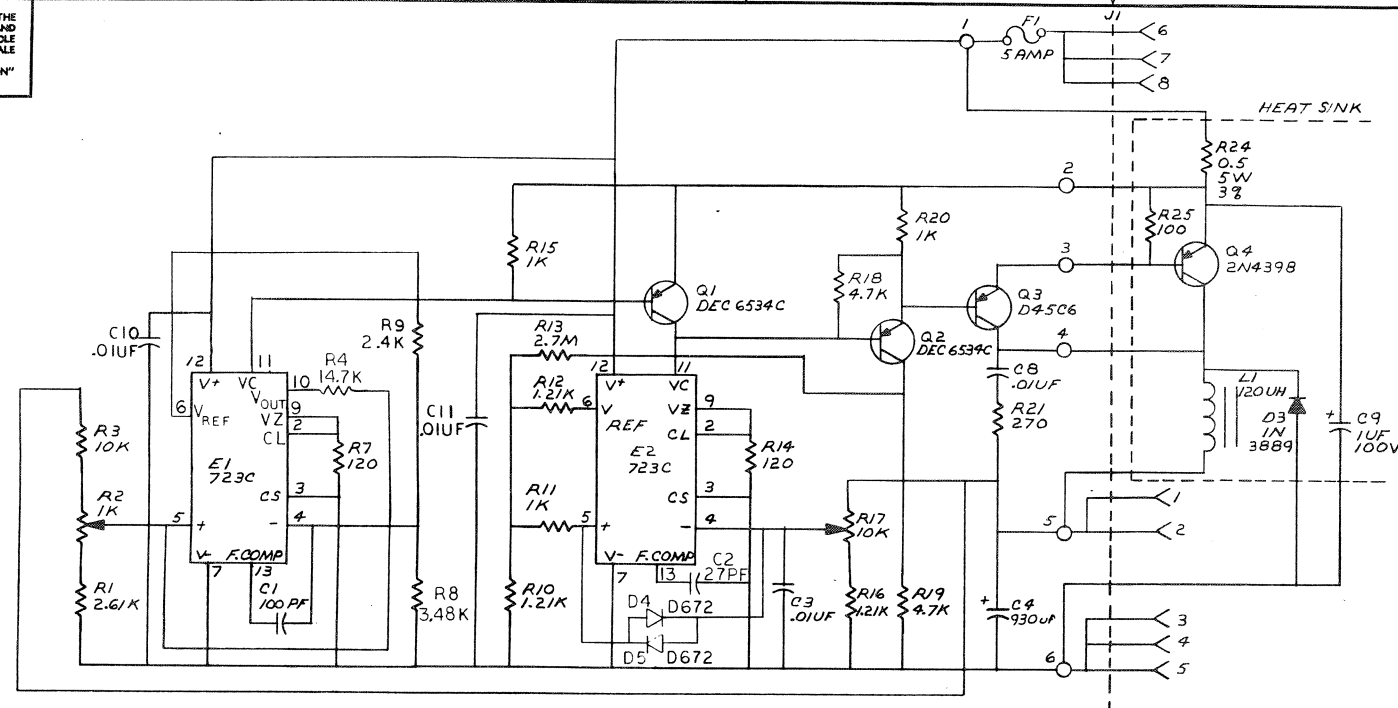
WIRE TABLE										EXTERNAL COMPONENTS									
ITEM		DESCRIPTION	LENGTH	STRIP	STRIP	CONNECTIONS		ITEM NO	LENGTH	DESCRIPTION	POL	CONNECTIONS							
NO.	AWG	COLOR	IN	IN	LENGTH	IN	FROM TO					FROM	TO	POL					
#3	-	BLK	2.0	1/2	1/2	1/2	1/2	1/2	4.5	SEE PAGE 2	REL100-5445.8	0.0-0.2	0.0-0.2	75-1					
#5	-	BLK	2.0	1/2	1/2	1/2	1/2	1/2	4.5	SEE PAGE 2	REL100-5445.8	0.0-0.2	0.0-0.2	75-1					
#5	18	BLN	2.0	1/2	1/2	1/2	1/2	1/2	4.5	SEE PAGE 2	REL100-5445.8	0.0-0.2	0.0-0.2	75-1					
#6	18	GRN	2.0	1/2	1/2	1/2	1/2	1/2	4.5	SEE PAGE 2	REL100-5445.8	0.0-0.2	0.0-0.2	75-1					
#6	18	WHT	2.0	1/2	1/2	1/2	1/2	1/2	4.5	SEE PAGE 2	REL100-5445.8	0.0-0.2	0.0-0.2	75-1					
#6	18	GRY	2.0	1/2	1/2	1/2	1/2	1/2	4.5	SEE PAGE 2	REL100-5445.8	0.0-0.2	0.0-0.2	75-1					
#6	18	WIO	2.0	1/2	1/2	1/2	1/2	1/2	4.5	SEE PAGE 2	REL100-5445.8	0.0-0.2	0.0-0.2	75-1					
#6	18	BLU	2.0	1/2	1/2	1/2	1/2	1/2	4.5	SEE PAGE 2	REL100-5445.8	0.0-0.2	0.0-0.2	75-1					
#6	18	GRN	2.0	1/2	1/2	1/2	1/2	1/2	4.5	SEE PAGE 2	REL100-5445.8	0.0-0.2	0.0-0.2	75-1					
#6	18	YEL	2.0	1/2	1/2	1/2	1/2	1/2	4.5	SEE PAGE 2	REL100-5445.8	0.0-0.2	0.0-0.2	75-1					

NOTES

1. R17 IS USED FOR OUTPUT VOLTAGE ADJUSTMENT, R2 IS USED FOR OUTPUT POWER ADJUSTMENT.
2. CUT LEADS OF RES (R23) SO THERE IS 7/8 OF A LEAD LEFT AT BOTH ENDS.
- (R23)
3. CUT LEADS OF CAR (C9) SO THERE IS 1/2 OF A LEAD LEFT AT BOTH ENDS
- (C9) (C9)
4. THERMAL COMPOUND (ITEM #31) IS TO BE APPLIED TO BOTH SIDES OF ALL THERMAL INSULATORS (ITEM #50-S1) BOTH SIDES OF EACH INSULATOR SHOULD BE COMPLETELY COVERED WITH COMPOUND NO VOIDS WHEN INSTALLED, CARE MUST BE EXERCISED SO THAT NO EXTRA COMPOUND INTERFERES WITH ANY ELECTRICAL CONNECTION MADE TO ANY DEVICE.

[illegible]

"THIS DRAWING AND SPECIFICATIONS, HEREIN, ARE THE PROPERTY OF DIGITAL EQUIPMENT CORPORATION AND SHALL NOT BE REPRODUCED OR COPIED OR USED IN WHOLE OR IN PART AS THE BASIS FOR THE MANUFACTURE OR SALE OF ITEMS WITHOUT WRITTEN PERMISSION. COPYRIGHT © DIGITAL EQUIPMENT CORPORATION"



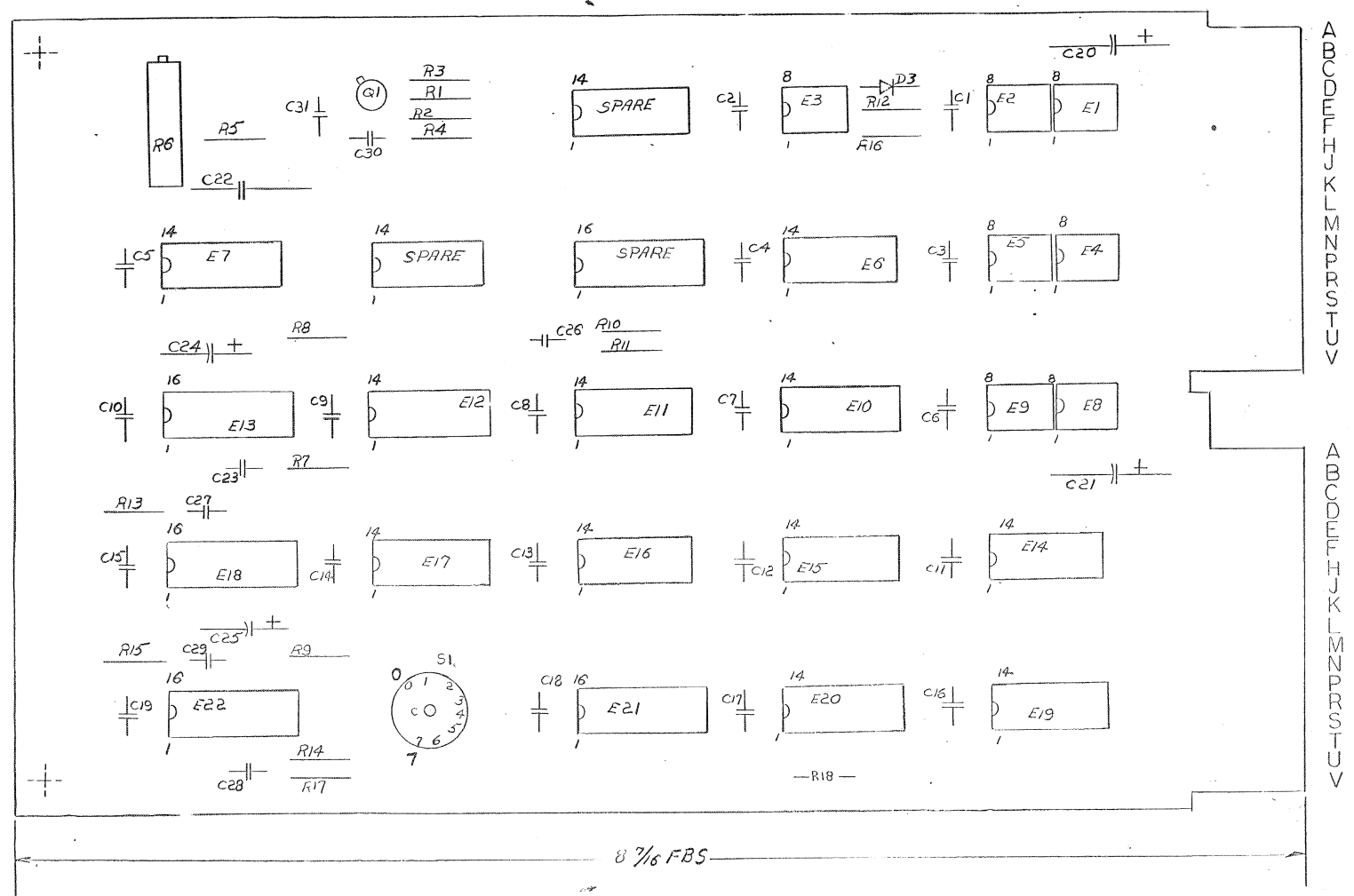
A/R		WIRE #18 AWG STRD (WHT)	9107360-99	28
A/R		WIRE #18 AWG STRD (GRY)	9107360-88	27
A/R		WIRE #18 AWG STRD (VIO)	9107360-77	26
A/R		WIRE #18 AWG STRD (BLU)	9107360-66	25
A/R		WIRE #18 AWG STRD (GRN)	9107360-55	24
A/R		WIRE #18 AWG STRD (YEL)	9107360-44	23
2		#2 INTERNAL LOCK WASHER	9006631	22
2		TIE WRAPS	9007031	21
1		WASHER FLAT 3/16	9006666	20
1		#10-32 HEX NUT	9006564	19
2		2/56 x 3/16" SCREW	9006000-4	18
2		6/32 x 5/8" PAN HD SCREW	9006025-1	17
1		10-32 x 1" TRUSS HD SCREW	9006077-3	16
1		#10 INTERNAL LOCK WASHER	9006635	15
1		BUSHING (DIODE)	9008441	14
1		SOLDER LUG	9008150	13
4		#6-20 x 3/8 SELF TAPPING SCREW	9008407-01	12
1		THERMAL INSULATOR	9008419	11
2		THERMAL INSULATOR	9008424	10
2	TS-1, TS-2	STAND OFF (STUD TYPE)	9009060	9
1		TRANSISTOR SOCKET	1210130	8
1	C9	CAP 1UF 100V	1005507	7
1	R24	RES. 0.5 3% 5W	1310508	6
1	R25	RES. 100 5% 1/4W	1300229	5
1	Q4	TRANSISTOR 2N4398	1505870	4
1	L1	120UH CHOK	1610573	3
1	D3	DIODE 1N3889	1110491	2
1		HEAT SINK	D-2A-309543-0-0	1
6		SPLIT LUGS	9006735	40
A/R		THERMAL COMPOUND	9008268	39
1	F1	FUSE 5 AMPS	1209070	38
2		WASHER NYLON	9006707	37
8		CONNECTOR PINS	1209456	36
2		EYELET	9006732	35
6		WASHER INT TOOTH #6	9006633	34
2	E1, 2	DIP REGULATOR 723C	1910415	33
1	Q3	TRANSISTOR D4506	1510414	32
2	Q1, 2	TRANSISTOR DEC 6534C	1503409-02	31
1	R21	RES. 270 1/4W 5%	1301972	30
1	R19	RES. 4.7K 1/2 W 5%	1300445	29
1	R18	RES. 4.7K 1/4W 5%	1300447	28
1	R17	RES. VARIABLE 10K 3/4 W 10%	1309143-10	27
1	R13	RES 2.7M 1/4 W 5%	1309680	25
3	R11, 15, 20	RES 1K 1/4 W 5%	1300365	24
3	R10, 12, 16	RES 1.21K 1/8W 1% MF	1302871	23
1	R8	RES 3.48K 1/8W 1% MF	1305114	22
2	R7, 14	RES 120 1/4 W 5%	1300247	21
1	R9	RES 2.4K 1/4W 5%	1303177	19
1	R4	RES 14.7K 1/8 W 1% MF	1302941	18
1	R3	RES 10K 1/8W 1% MF	1303312	17
1	R2	RES VARIABLE 1K 1/2 W	1309150-03	16
1	R1	RES 2.61K 1/8W 1% MF	1303303	15
1	J1	AMP 8 PIN CONNECTOR (MATELOC)	1209340-00	14
2	D4, D5	DIODE D672	1105275	13
				12
				11
				10
1	C4	CAP. 930UF 30V-10+75%	1010509	9
4	C3, B10, 11	CAP. .01UF 100V20% AXIAL	1001610	8
1	C2	CAP. 27 PF 100 V 5% MICA	1001739	7
1	C1	CAP. 100PF 100V 5% DM.	1000016	6
1		ETCHED CIRCUIT BOARD	5009483	5
		MODULE ECO HISTORY	B-MH-5409484-0-6	4
		ASSY DRILLING HOLE LAYOUT	D-AH-5409484-0-5	3
		X-Y COORDINATE HOLE LOCATION	K-CO-5409484-0-4	2
		B TO 20 V REGULATOR	E-2A-5409484-0-0	1

REVISIONS		
CHK	CHANGE NO.	REV.
577	00005	H
J. RINALDIS		
10-21		
1/19/72		

DRN	1/1/72	3-1/1/72	TITLE	3 TO 20V REGULATOR	SIZE CODE	D CS	NUMBER	5409484-0-1	REV.	H
CHKD	1/1/72	3/10/72	SCALE		SHEET	1 OF 1	DIST.			
ENG	1/1/72	4/3/72								
PROD	1/1/72	4/1/72								

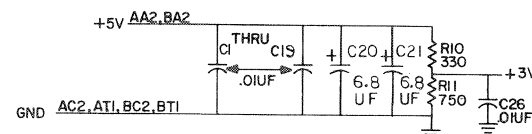
NOTES:

1. ITEM #23 CAN BE REPLACED BY A DEC 6534C(150340902,
TRANSISTOR IF NEEDED.




NOTES:

PIN7 = GND ON E2, E5, E7, E11, E13,
 PIN14 = +5V ON E14, E17, E20, E21, E23
 PIN4 = GND ON E1, E3, E4, E9,
 PIN8 = +5V ON E10, E15, E16
 PIN10 = GND
 PIN5 = +5V ON E8, E12
 PIN1 = GND ON E22
 PIN8 = +5V
 PIN8 = GND ON E6, E18, E19
 PIN16 = +5V



QTY	REF. DESIGNATION	DESCRIPTION	DEC PART NO.
2	C20, 21	CAP. 6.8UF 35V 20% 5%	1000067
1	R2	RESISTOR 4.7K 1/4W 5%	1300447
1	C22	CAP. .01UF 100V 10% NYLAR	1005784
2		HANDLE, PLIP CHIP - MAGENTA	9008337-06
4		EYELET	9006732
1	E20	I.C. DEC 7401	1905590
3	R13, 18, 22	I.C. DEC 74123	1910436
7	E1-S, E8, E9	I.C. DEC 72562	1910645
1	E7	I.C. DEC 74121	1910230
1	E21	I.C. DEC 74145	1910047
1	E14	I.C. DEC 7404	1909686
2	K15, 19	I.C. DEC 8640	1911469
2	E6, 11	I.C. DEC 7493	1909054
1	E10	I.C. DEC 7410	1905576
2	E12, 16	I.C. DEC 7400	1905575
1	E17	I.C. DEC 7474	1905587
1	Q1 SEE NOTE 1	TRANSISTOR DEC 3639C	1502762-01
1	R13	RES. 18K 1/4W 5%	1302465
3	R14, 15, 8	RES. 30K 1/4W 5%	1302394
1	R6	POT. 10K 3/4W 10%	1309143-10
1	R9	RES. 22K 1/4W 5%	1301808
1	R11	RES. 750 1/4W 5%	1301401
3	R3, R7, R18	RES. 10K 1/4W 5%	1308479
2	R4, 10	RES. 330 1/4W 5%	1300295
1	R12	RES. 150 1/4W 5%	1300250
1	R1	RES. 100 1/4W 5%	1300229
1	S1	SWITCH ROTARY 8 POS	1210042
1	D3	DIODE A25 (2,4)	1101938
3	R5, 16, 17	RES 1K 1/4W 5%	1300365
1	C24	CAP. .15UF 35V 20% S.TANT	1002180
1	C25	CAP. 1.0UF 35V 10% S.TANT	1001776
21	C1 thru C19, C26, C31	CAP. .01UF 100V 20% DISC	1001610
1	C29	CAP. 470PF 100V 5% D.M.	1000024
2	C23, C30	C.F. 330PF 100V 5% D.M.	1000023
2	C28, 27	CAP. 100PF 100V 5% D.M.	1000016
1		ETCHED CIRCUIT BOARD	5009716
		MODULE B20 HISTORY	B-MH-M7700-0-6
		ASSY/DRILLING HOLE LAYOUT	B-MH-M7700-0-5
		X-Y COORDINATE HOLE LOCATION	K-GO-M7700-0-4

DRM 817 JCH	DATE 1/27/71	TRANSISTOR & DIODE CONVERSION CHART				 DIGITAL EQUIPMENT CORPORATION <small>MAYNARD, MASSACHUSETTS</small>	TITLE RK2-1 DEC PAK INDEX AND SECTOR	
CHKD JCH	DATE	DEC	EIA	DEC	EIA		SIZE D CODE CS NUMBER M7700-G-1 REV R	
ENG JCH	DATE	D664	M3606					
PROP JCH	DATE	DEC6331	MP58531					
	DATE	A29(2.4V)	RV4570					

