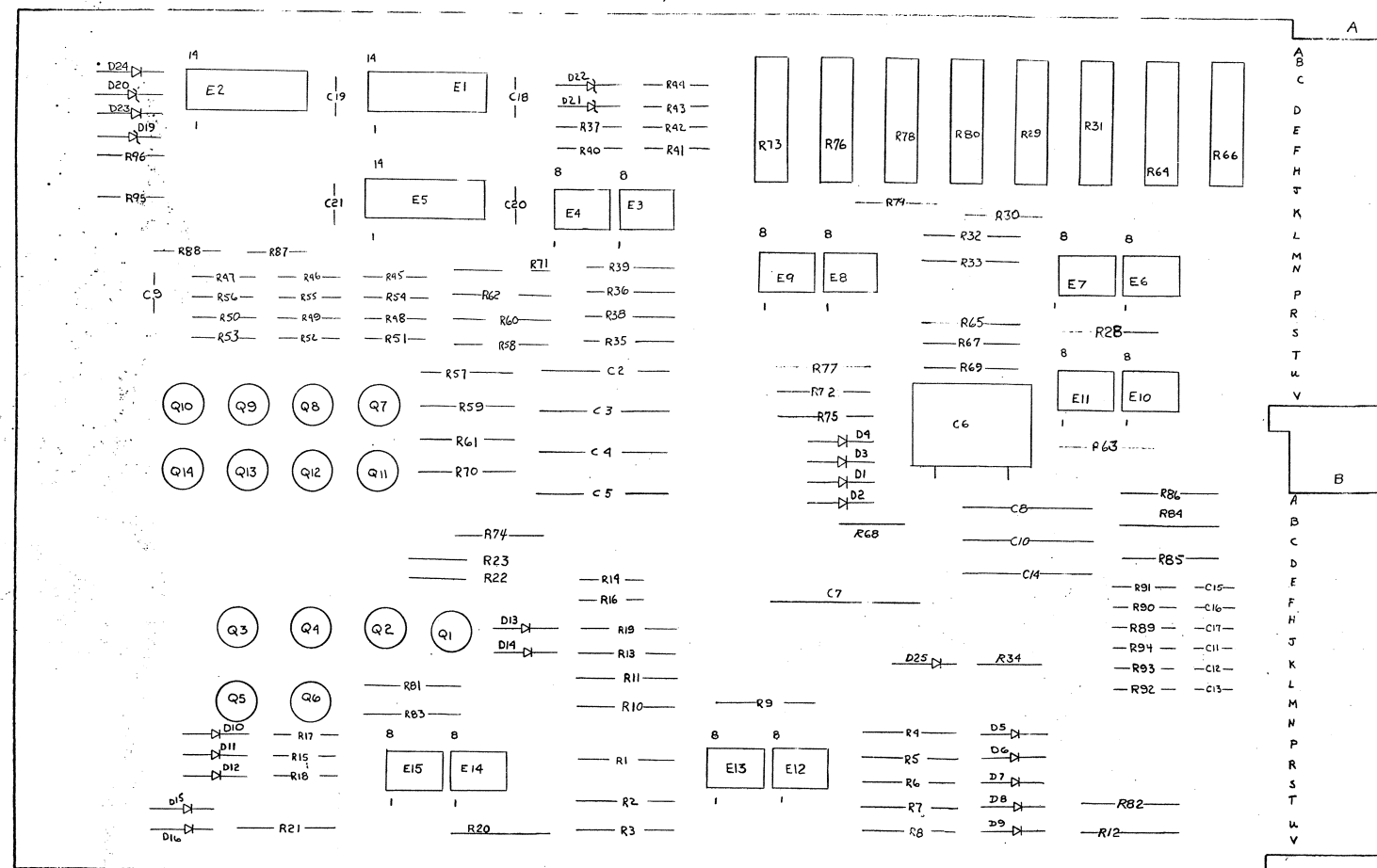


This drawing and specifications, herein, are the property of Digital Equipment Corporation and shall not be reproduced or copied or used in whole or in part as the basis for the manufacture or sale of items without written permission.



UNLESS OTHERWISE INDICATED.  
PIN 14 = +5V, PIN 7 = GND ON ALL IC'S.  
EXCEPT LM301+72741.

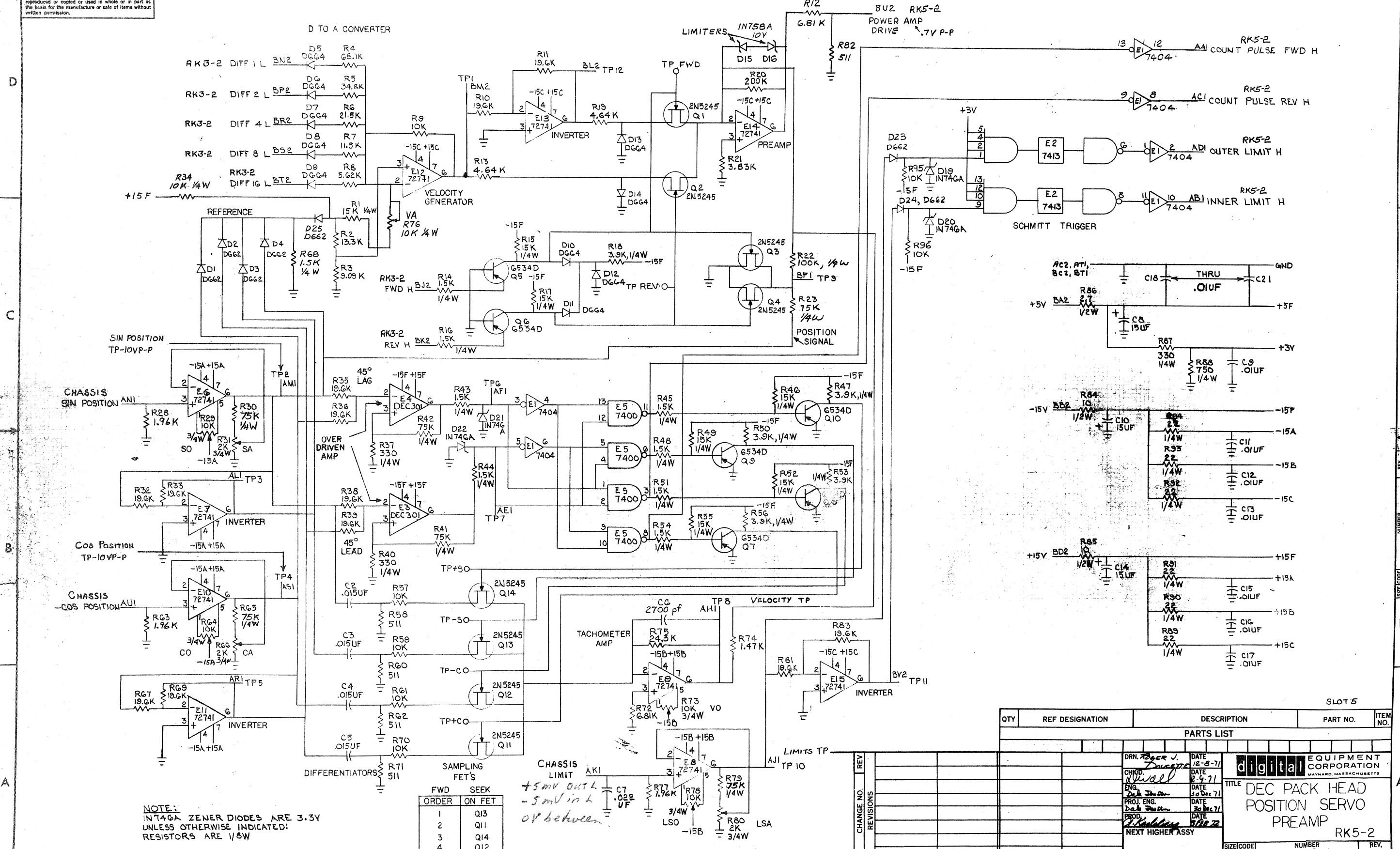
3	R20, 63, 77	RES. 1.96K 1/8W 1% MF	130483.3	55
1	R74	RES. 1.47 K 1/8W 1% MF	1305108	54
3	R95, 96, 34	RES. 10K 1/4W 5%	1300479	53
A/R		GRIPLET	1210244-0	52
2		HANDLE, FLIP CHIP - GREEN	9006337-01	51
4		EYELET #GSL-7	9006732	50
10	E6 - E15	I.C. DEC 72741	191C298	49
2	E3, E4	I.C. DEC 301	191C282	48
1	E2,	I.C. DEC 7413	1909989	47
1	E1	I.C. DEC 7404	1909686	46
1	E5	I.C. DEC 7400	1905575	45
8	Q1-4, Q11-14	TRANSISTOR 2N5245	1509681	44
6	Q5-Q10	TRANSISTOR DEC 6534D	1503409-00	43
1	R86	RES. 2.7 1/4W 10%	1309444	42
1	R20	RES. 200 K 1/8W 1% MF	1305336	41
12	R1, Q11, R2, R3, R36, R38, R39, R40, R41, R42	RES. 19.6K 1/8W 1% MF	1309149	40
1	R7	RES. 11.5K 1/8W 1% MF	1309415	39
1	R21	RES. 1.83K 1/8W 1% MF	1309413	38
1	R75	RES. 24.3K 1/8W 1% MF	1309418	37
5	R29, 64, 73, 76, 78	RES. 10K 3/4W 10% 76PR	1309443-10	36
3	R31, 66, 80	POT. 2K 3/4W 10% 76PR	1309443-08	35
1	R4	RES. 68.1K 1/8W 1% MF	1305252	34
1	R8	RES. 5.62K 1/8W 1% MF	1305128	33
2	R72, R12	RES. 6.81K 1/8W 1% MF	1304870	32
6	R41, R42, R23, 30, 65, 79	RES. 75K 1/4W 5%	1304841	31
2	R13, R19	RES. 4.67K 1/8W 1% MF	1304856	30
5	R9,	RES. 10K 1/8W 1% MF	1303312	29
1	R5	RES. 34.8K 1/8W 1% MF	1303156	27
1	R6	RES. 21.5K 1/8W 1% MF	1303155	26
1	R2	RES. 13.3K 1/8W 1% MF	1302412	25
1	R3	RES. 309K 1/8W 1% MF	1304855	24
1	R22	RES. 100K 1/4W 5%	1302466	23
5	R58, 60, R62, R71, R82	RES. 511 1/8W 1% MF	1302411	22
1	R88	RES. 750 1/4W 5%	1301401	21
7	R15, 17, 46, 49, 52, 55, 1	RES. 15K 1/4W 5%	1300496	20
5	R18, R47, R50, 53, 56	RES. 3.9K 1/4W 5%	1300444	19
9	R14, 16, 44, 45, 48, 51, 54, 68	RES. 1.5K 1/4W 5%	1300391	18
3	R37, 40, 87	RES. 330 1/4W 5%	1300295	17
6	R89-94	RES. 22 1/4W 10%	1300188	16
2	R64, R85	RES. 10 1/4W 5%	1300168	15
2	D15, D16	DIODE 1N758A 10V	1100125	14
4	D19 - 22	DIODE 1N746A	1104860	13
10	D5 - 14	DIODE D664	1100114	12
7	D1 - D4, 25, 23, 24	DIODE D662	1100113	11
1	C7	CAP. .022UF 100V 10% MYLAR	1002323	10
1	C6	CAP. 2700pf 100V MICA	1001637	9
3	C8, 10, 14	CAP. .15UF 20V 10% TANT	1001612	8
11	C9, 11, 12, 13, 15-21	CAP. .01UF 100V 20% DISC	1001610	7
4	C2, 3, 4, 5	CAP. .015UF 50V2% POLY CARB	1010646	5
1		ETCHED CIRCUIT BOARD	5009388	4
		MODULE ECO HISTORY	B-MH-0938-0-6	3
		ASSY/DRILLING HOLE LAYOUT	E-AH-0938-0-5	2
		X-Y COORDINATE HOLE LOCATION	K-CO-0938-0-4	1

QTY	REF DESIGNATION	DESCRIPTION	PART NO.	ITEM NO.
PARTS LIST				
ETCH BOARD REV	K			
		DRN. <del>Robert J.</del> <i>LAUGETTE</i>	DATE 12-8-71	<div style="border: 1px solid black; padding: 5px;"> <b>digital</b> EQUIPMENT CORPORATION  <small>HAVERHARD MASSACHUSETTS</small> </div> <div style="margin-top: 10px;">             TITLE              DEC PACK HEAD              POSITION. SERVO              PREAMP              RK5-1           </div>
		CHKD. <i>W. J. J.</i>	DATE 12-9-71	
		ENG. <i>Dale Jensen</i>	DATE 30 Dec 71	
		PROJ. ENG. <i>Dale Jensen</i>	DATE 30 Dec 71	
		PROD. <i>W. K. K. K.</i>	DATE 12-8-72	
		NEXT HIGHERCASSY		
DEC NO.	EIA NO.	SCALE	SIZE CODE D C5	NUMBER G938-0-1
CONVERSION CHART		SHEET 1 OF 2	DIST.	REV. L

CHK	CHANGE NO.	REV
100	100000	1
101	100001	1
102	100002	1
103	100003	1
104	100004	1
105	100005	1
106	100006	1
107	100007	1
108	100008	1
109	100009	1
110	100010	1
111	100011	1
112	100012	1
113	100013	1
114	100014	1
115	100015	1
116	100016	1
117	100017	1
118	100018	1
119	100019	1
120	100020	1
121	100021	1
122	100022	1
123	100023	1
124	100024	1
125	100025	1
126	100026	1
127	100027	1
128	100028	1
129	100029	1
130	100030	1
131	100031	1
132	100032	1
133	100033	1
134	100034	1
135	100035	1
136	100036	1
137	100037	1
138	100038	1
139	100039	1
140	100040	1
141	100041	1
142	100042	1
143	100043	1
144	100044	1
145	100045	1
146	100046	1
147	100047	1
148	100048	1
149	100049	1
150	100050	1
151	100051	1
152	100052	1
153	100053	1
154	100054	1
155	100055	1
156	100056	1
157	100057	1
158	100058	1
159	100059	1
160	100060	1
161	100061	1
162	100062	1
163	100063	1
164	100064	1
165	100065	1
166	100066	1
167	100067	1
168	100068	1
169	100069	1
170	100070	1
171	100071	1
172	100072	1
173	100073	1
174	100074	1
175	100075	1
176	100076	1
177	100077	1
178	100078	1
179	100079	1
180	100080	1
181	100081	1
182	100082	1
183	100083	1
184	100084	1
185	100085	1
186	100086	1
187	100087	1
188	100088	1
189	100089	1
190	100090	1
191	100091	1
192	100092	1
193	100093	1
194	100094	1
195	100095	1
196	100096	1
197	100097	1
198	100098	1
199	100099	1
200	100100	1

This drawing and specifications, herein, are the property of Digital Equipment Corporation and shall not be reproduced or copied or used in whole or in part as the basis for the manufacture or sale of items without written permission.

1-0-8969 2



NOTE:  
IN746A ZENER DIODES ARE 3.3V  
UNLESS OTHERWISE INDICATED;  
RESISTORS ARE 1/8W

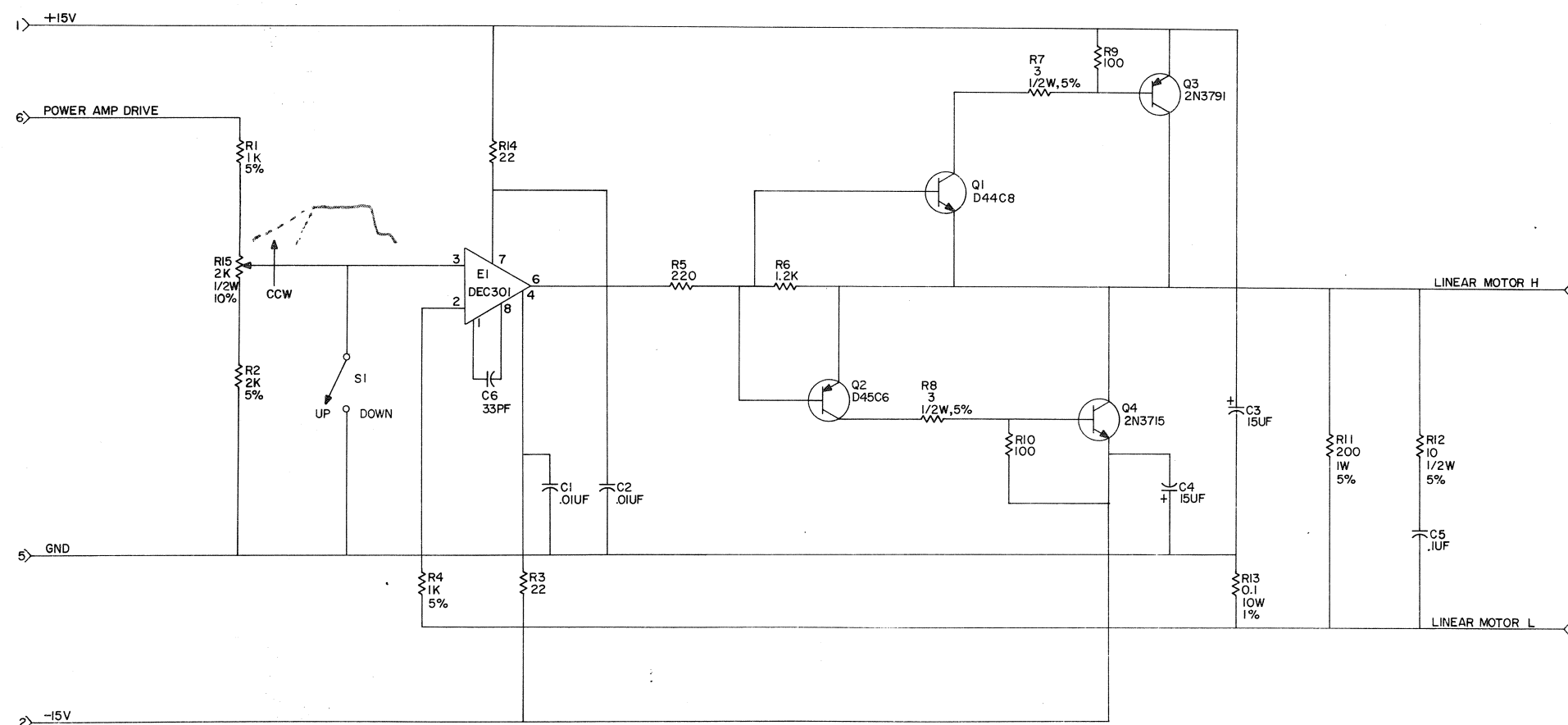
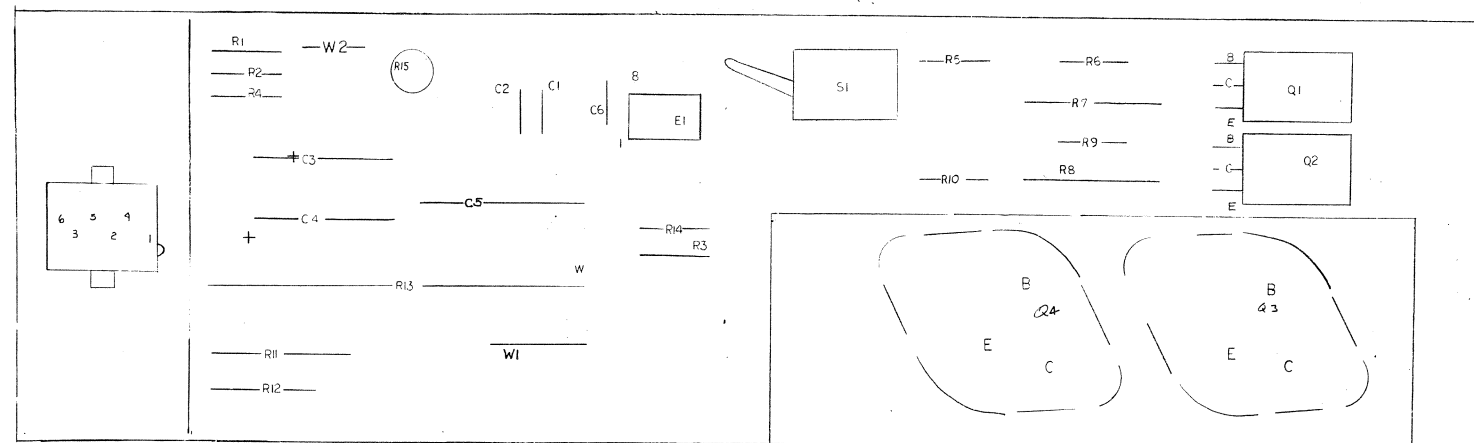
ORDER	FWD	SEEK
1	Q13	Q13
2	Q11	Q11
3	Q14	Q14
4	Q12	Q12

QTY	REF DESIGNATION	DESCRIPTION	PART NO.	ITEM NO.
PARTS LIST				
1	DRN. 72741	DATE 12-8-71	<div> <p>digital EQUIPMENT CORPORATION MAYNARD, MASSACHUSETTS</p> </div>	
1	CHKD. 72741	DATE 12-9-71		
1	ENG. 72741	DATE 30 Dec 71		
1	PROJ. ENG. 72741	DATE 30 Dec 71		
1	PROD. 72741	DATE 1/18/72		
NEXT HIGHER ASSY			<div> <p>DEC NO. EIA NO. DEC NO. EIA NO.</p> <p>SCALE SHEET 2 OF 2</p> </div>	
SEMICONDUCTOR CONVERSION CHART			<div> <p>SIZE CODE DCS</p> <p>NUMBER G938-0-1</p> <p>REV. 1</p> </div>	

REV. 1  
G938-0-1  
DCS

THIS SCHEMATIC IS FURNISHED ONLY FOR TEST AND MAINTENANCE PURPOSES. THE CIRCUITS ARE PROPRIETARY IN NATURE AND SHOULD BE TREATED ACCORDINGLY. COPYRIGHT 1971 BY DIGITAL EQUIPMENT CORPORATION

1-0-809H SJ: Q  
3000 1/15



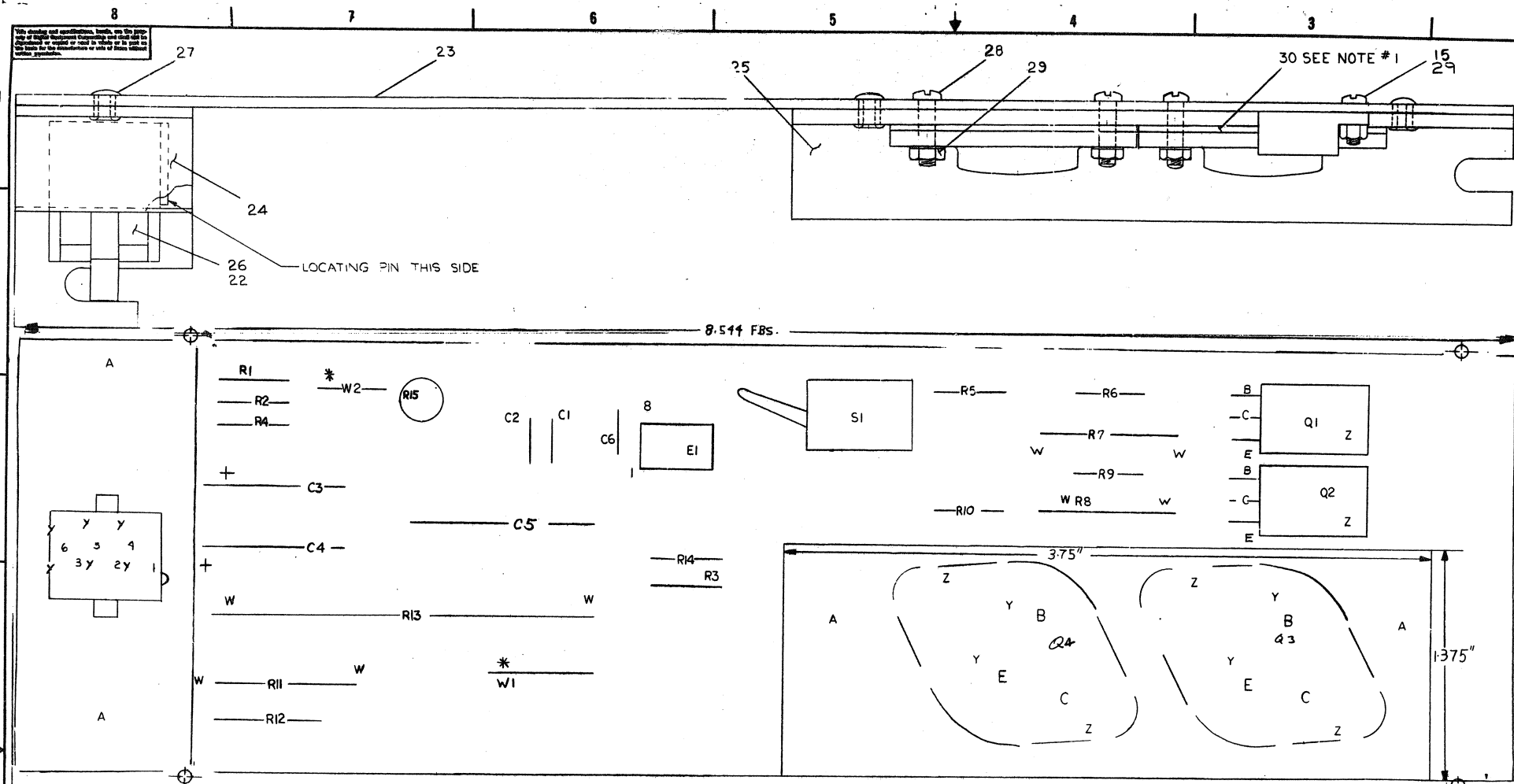
UNLESS OTHERWISE INDICATED:  
RES. ARE 1/4W, 10%  
R13 IS A CURRENT SAMPLING RES.

REVISIONS	DATE	BY	CHK'D	APP'D
1	11/15/71	B. J. JENSEN		
2	11/15/71	B. J. JENSEN		
3	11/15/71	B. J. JENSEN		
4	11/15/71	B. J. JENSEN		
5	11/15/71	B. J. JENSEN		
6	11/15/71	B. J. JENSEN		
7	11/15/71	B. J. JENSEN		
8	11/15/71	B. J. JENSEN		
9	11/15/71	B. J. JENSEN		
10	11/15/71	B. J. JENSEN		

DATE	BY	CHK'D	APP'D
11/15/71	B. J. JENSEN		
11/15/71	B. J. JENSEN		
11/15/71	B. J. JENSEN		
11/15/71	B. J. JENSEN		

TRANSISTOR & DIODE CONVERSION CHART			
DEC	EIA	DEC	EIA
2N3715			
D45C6			
D44C6			

digital		EQUIPMENT CORPORATION		TITLE: DECPAK HEAD POS. SERVO PWR. AMP.	
SITE	CODE	NUMBER	REV		
D	CS	H604-0-1	J		
PRINTED CIRCUIT REV					



NOTES:  
1. APPLY ITEM NO 31 (THERMAL JOINT COMPOUND) BETWEEN TRANSISTORS (Q3 & Q4) AND ITEM NO 30 (WASHER), ALSO BETWEEN ITEM NO 30 (WASHER) AND ITEM NO 25 (BRACKET, HEAT SINK).

IC TYPE	QND	Q-UV	ITEM NO	AWG	FROM PT	TO PT
QND AND UV ARE USUALLY PRT 7 AND 14 RESPECTIVELY. EXCEPTS ARE STATED ABOVE.						
IC PIN LOCATIONS						
JUMPER LIST						

1	R2	RES 2K 1/4W 5%	1302388	34	REF
35	REF				
34	REF				

QTY	REF DESIGNATION	DESCRIPTION	PART NO.
1	R2	RES 2K 1/4W 5%	1302388
1	R1	RES 1K 1/4W 5%	1300365
1	R15	SCREW 4-40X1/4 BINDER HD SLOTTED	9006009-4
1	R10	POT 2K 1/2W 10% 62 PR	1309410
1	R6	RES 1.2K .25W 10%	1300386
1	R5	RES 220 .25W 10%	1300275
1	R11	RES 200 1W 5%	1302388
2	R9, R10	RES 100 .25W 10%	1300231
2	R3, R14	RES 22 .25W 10%	1300186
1	R12	RES 10 .5W 5%	1300168
2	R7, R8	RES 3 .5W 5%	1301643
1	R13	RES 1 .10W 1%	1309108
1	SI	SWITCH TOGGLE T-800H	1210209
2	C3, C4	CAP 15UF .20V 10%	1004812
1	C6	CAP 33PF .100V 5%	1000009
1	C5	CAP .1UF .100V 10%	1002342
2	C1, C2	CAP .01UF .100V 20%	1001610
1	Q1, Q2	MODULE ECO HISTORY	B-MH-H604-0-6
1		X-Y CO-ORDINATE HOLE LOCATION	K-CO-H604-0-4
1		CIRCUIT SCHEMATIC	D-CS-H604-0-1

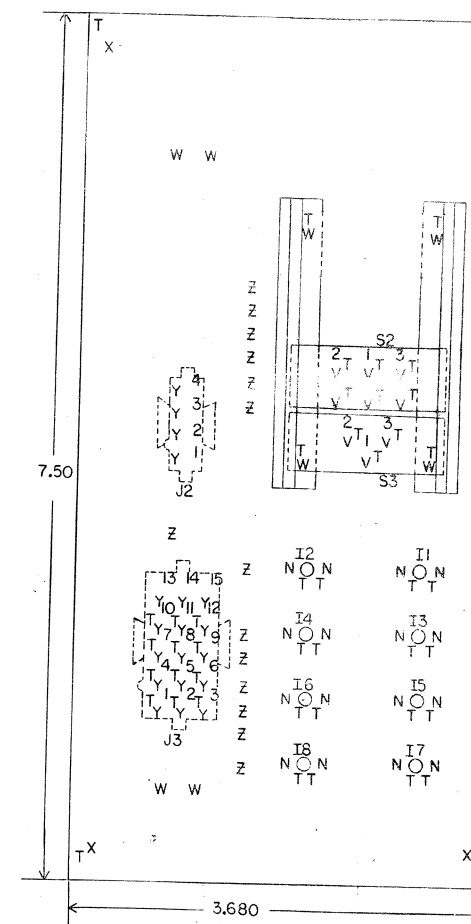
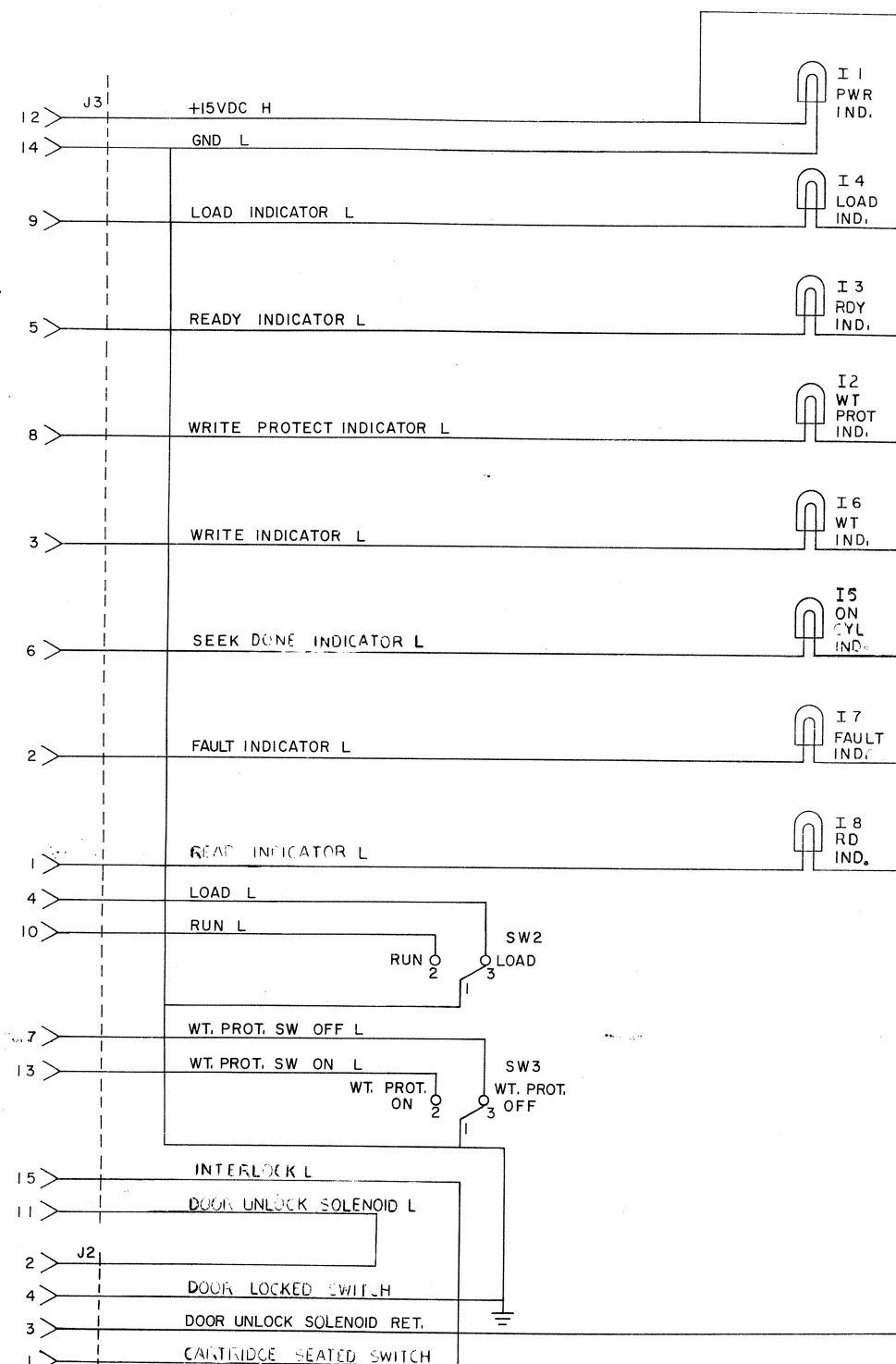
REF	DESCRIPTION	PART NO.	QTY
1	ASSY HOLE DRILLING LAYOUT	D-AH-H604-0-3	33
2	#22 AWG JUMPER WIRE	9107560-01	32
3	COMPOUND THERMAL JOINT	9008268	31
4	INSULATOR WASHER	9006721	30
5	KEP NUT 4-40	9006557	29
6	SCR BINDER HD SLOTTED #4-40X.44	9006012-4	28
7	EYELET .1210D A.210 L6	9006732	27
8	6 PIN MATE-N-LOCK	1209350-06	26
9	BRACKET, HEAT SINK	C-MD-5509810-00	25
10	BRACKET, SERVO BOARD	C-MD-5509812-00	24
11	ETCHED CIRCUIT BOARD	9009741	23
12	PINS FOR MATE-N-LOCK	1209456	22
13	IC LM301	1310282	21
14	TRANS 2N3715	1503068	20
15	TRANS 2N3791	1509581	19
16	TRANS DEC D45C6	1510414	18
17	TRANS DEC D44CB OR TIP DIA	1510421	17
18	RES 1K .25W 5%	1300365	16
19	SCREW 4-40X1/4 BINDER HD SLOTTED	9006009-4	15
20	POT 2K 1/2W 10% 62 PR	1309410	14
21	RES 1.2K .25W 10%	1300386	13
22	RES 220 .25W 10%	1300275	12
23	RES 200 1W 5%	1302388	11
24	RES 100 .25W 10%	1300231	10
25	RES 22 .25W 10%	1300186	9
26	RES 10 .5W 5%	1300168	8
27	RES 3 .5W 5%	1301643	7
28	RES 1 .10W 1%	1309108	6
29	SWITCH TOGGLE T-800H	1210209	5
30	CAP 15UF .20V 10%	1004812	4
31	CAP 33PF .100V 5%	1000009	3
32	CAP .1UF .100V 10%	1002342	2
33	CAP .01UF .100V 20%	1001610	1

QTY	REF DESIGNATION	DESCRIPTION	PART NO.
1	R2	RES 2K 1/4W 5%	1302388
1	R1	RES 1K 1/4W 5%	1300365
1	R15	SCREW 4-40X1/4 BINDER HD SLOTTED	9006009-4
1	R10	POT 2K 1/2W 10% 62 PR	1309410
1	R6	RES 1.2K .25W 10%	1300386
1	R5	RES 220 .25W 10%	1300275
1	R11	RES 200 1W 5%	1302388
2	R9, R10	RES 100 .25W 10%	1300231
2	R3, R14	RES 22 .25W 10%	1300186
1	R12	RES 10 .5W 5%	1300168
2	R7, R8	RES 3 .5W 5%	1301643
1	R13	RES 1 .10W 1%	1309108
1	SI	SWITCH TOGGLE T-800H	1210209
2	C3, C4	CAP 15UF .20V 10%	1004812
1	C6	CAP 33PF .100V 5%	1000009
1	C5	CAP .1UF .100V 10%	1002342
2	C1, C2	CAP .01UF .100V 20%	1001610
1	Q1, Q2	MODULE ECO HISTORY	B-MH-H604-0-6
1		X-Y CO-ORDINATE HOLE LOCATION	K-CO-H604-0-4
1		CIRCUIT SCHEMATIC	D-CS-H604-0-1

QTY	REF DESIGNATION	DESCRIPTION	PART NO.
1	R2	RES 2K 1/4W 5%	1302388
1	R1	RES 1K 1/4W 5%	1300365
1	R15	SCREW 4-40X1/4 BINDER HD SLOTTED	9006009-4
1	R10	POT 2K 1/2W 10% 62 PR	1309410
1	R6	RES 1.2K .25W 10%	1300386
1	R5	RES 220 .25W 10%	1300275
1	R11	RES 200 1W 5%	1302388
2	R9, R10	RES 100 .25W 10%	1300231
2	R3, R14	RES 22 .25W 10%	1300186
1	R12	RES 10 .5W 5%	1300168
2	R7, R8	RES 3 .5W 5%	1301643
1	R13	RES 1 .10W 1%	1309108
1	SI	SWITCH TOGGLE T-800H	1210209
2	C3, C4	CAP 15UF .20V 10%	1004812
1	C6	CAP 33PF .100V 5%	1000009
1	C5	CAP .1UF .100V 10%	1002342
2	C1, C2	CAP .01UF .100V 20%	1001610
1	Q1, Q2	MODULE ECO HISTORY	B-MH-H604-0-6
1		X-Y CO-ORDINATE HOLE LOCATION	K-CO-H604-0-4
1		CIRCUIT SCHEMATIC	D-CS-H604-0-1



THIS SCHEMATIC IS FURNISHED ONLY FOR TEST AND MAINTENANCE PURPOSES. THE CIRCUITS ARE PROPRIETARY IN NATURE AND SHOULD BE TREATED ACCORDINGLY. COPYRIGHT 1971 BY DIGITAL EQUIPMENT CORPORATION



REV	CHG	NO	REV
1	1	1	1
2	2	2	2
3	3	3	3
4	4	4	4
5	5	5	5
6	6	6	6
7	7	7	7
8	8	8	8
9	9	9	9
10	10	10	10
11	11	11	11
12	12	12	12
13	13	13	13
14	14	14	14
15	15	15	15

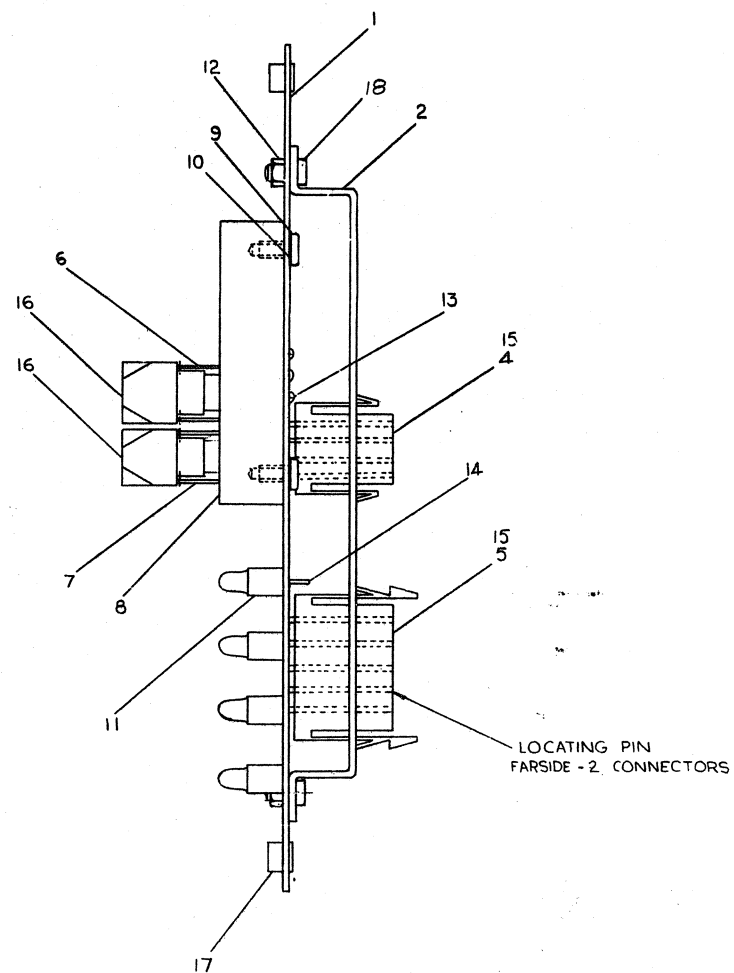
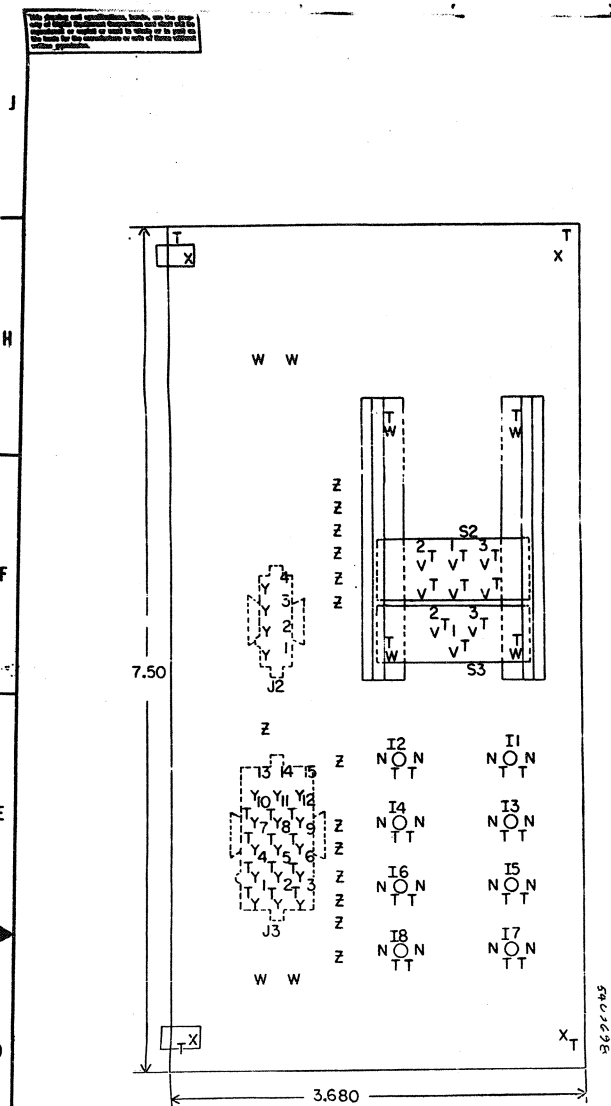
DEC FORM NO.  
DRC 102

DRN	DATE
S. COOPER	11-20-71
CHK'D	DATE
ENG	DATE
W. JENSEN	19 Dec 71
PROD	DATE

TRANSISTOR & DIODE CONVERSION CHART			
DEC	EIA	DEC	EIA

TITLE				RK7-1			
digital				RK05 CONTROL PANEL			
EQUIPMENT CORPORATION				SIZE	CODE	NUMBER	REV.
				C	CS	5409698-0-1	D

REV.	NUMBER
D	5409698-0-1
SIZE	CODE
C	CS

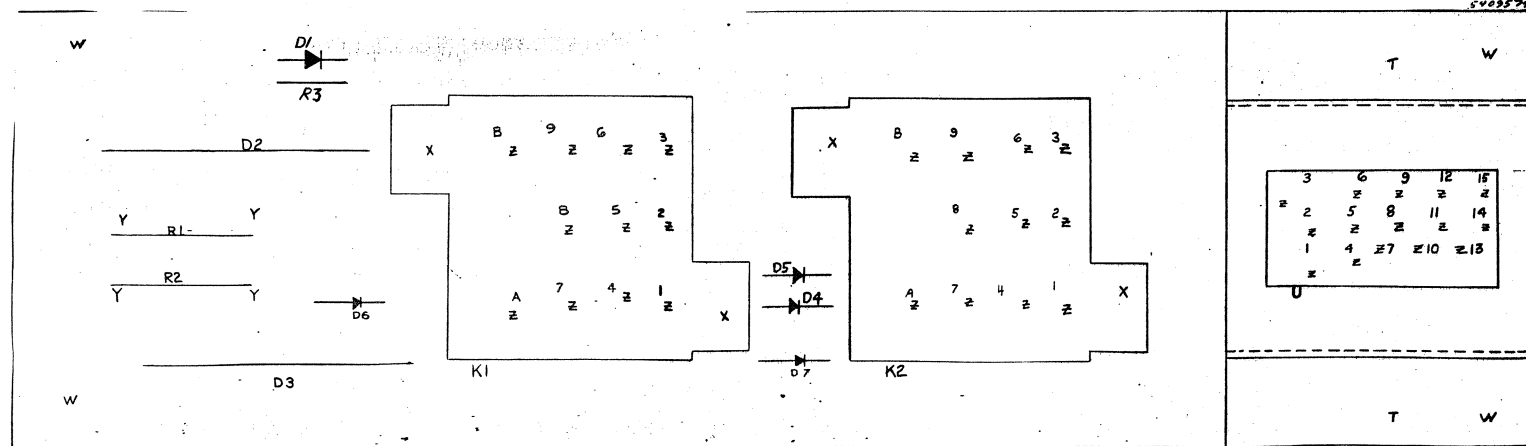


IC TYPE	QND	±SV	ITEM NO	AWG	FROM PT	TO PT
IC PIN LOCATIONS						
JUMPER LIST						

REF	DESCRIPTION	QTY	REF	DESCRIPTION	QTY
4	ASSY/DRILLING HOLE LAYOUT	1	19	LOCATING PIN FARSIDE - 2. CONNECTORS	1
4	SCR, PHL PAN HD *4-40x5/16 LG	1	18	LOCATING PIN FARSIDE - 2. CONNECTORS	1
4	NUT CLIP *6-32	1	17	LOCATING PIN FARSIDE - 2. CONNECTORS	1
2	SWITCH BUTTON	1	16	LOCATING PIN FARSIDE - 2. CONNECTORS	1
19	PIN SOCKET MATE-N-LOCK	1	15	LOCATING PIN FARSIDE - 2. CONNECTORS	1
16	TERMINAL SOLDERLESS	1	14	LOCATING PIN FARSIDE - 2. CONNECTORS	1
16	EYELET FEED THROUGH	1	13	LOCATING PIN FARSIDE - 2. CONNECTORS	1
4	NUT KEPS *4-40	1	12	LOCATING PIN FARSIDE - 2. CONNECTORS	1
8	LAMP	1	11	LOCATING PIN FARSIDE - 2. CONNECTORS	1
4	LOCK WASHER INTERNAL 6-32	1	10	LOCATING PIN FARSIDE - 2. CONNECTORS	1
4	SCREW PHL PAN HEAD 6-32x5/16 LG	1	9	LOCATING PIN FARSIDE - 2. CONNECTORS	1
2	SWITCH MOUNTING BAR	1	8	LOCATING PIN FARSIDE - 2. CONNECTORS	1
1	S3	1	7	LOCATING PIN FARSIDE - 2. CONNECTORS	1
1	S2	1	6	LOCATING PIN FARSIDE - 2. CONNECTORS	1
1	J3	1	5	LOCATING PIN FARSIDE - 2. CONNECTORS	1
1	J2	1	4	LOCATING PIN FARSIDE - 2. CONNECTORS	1
1	CONNECTOR BRACKET	1	3	LOCATING PIN FARSIDE - 2. CONNECTORS	1
1	ETCHED CIRCUIT BOARD	1	2	LOCATING PIN FARSIDE - 2. CONNECTORS	1
1	MODULE ECO HISTORY	1	1	LOCATING PIN FARSIDE - 2. CONNECTORS	1
REF	X-Y CO-ORDINATE HOLE LOCATION	1			
REF	CIRCUIT SCHEMATIC	1			

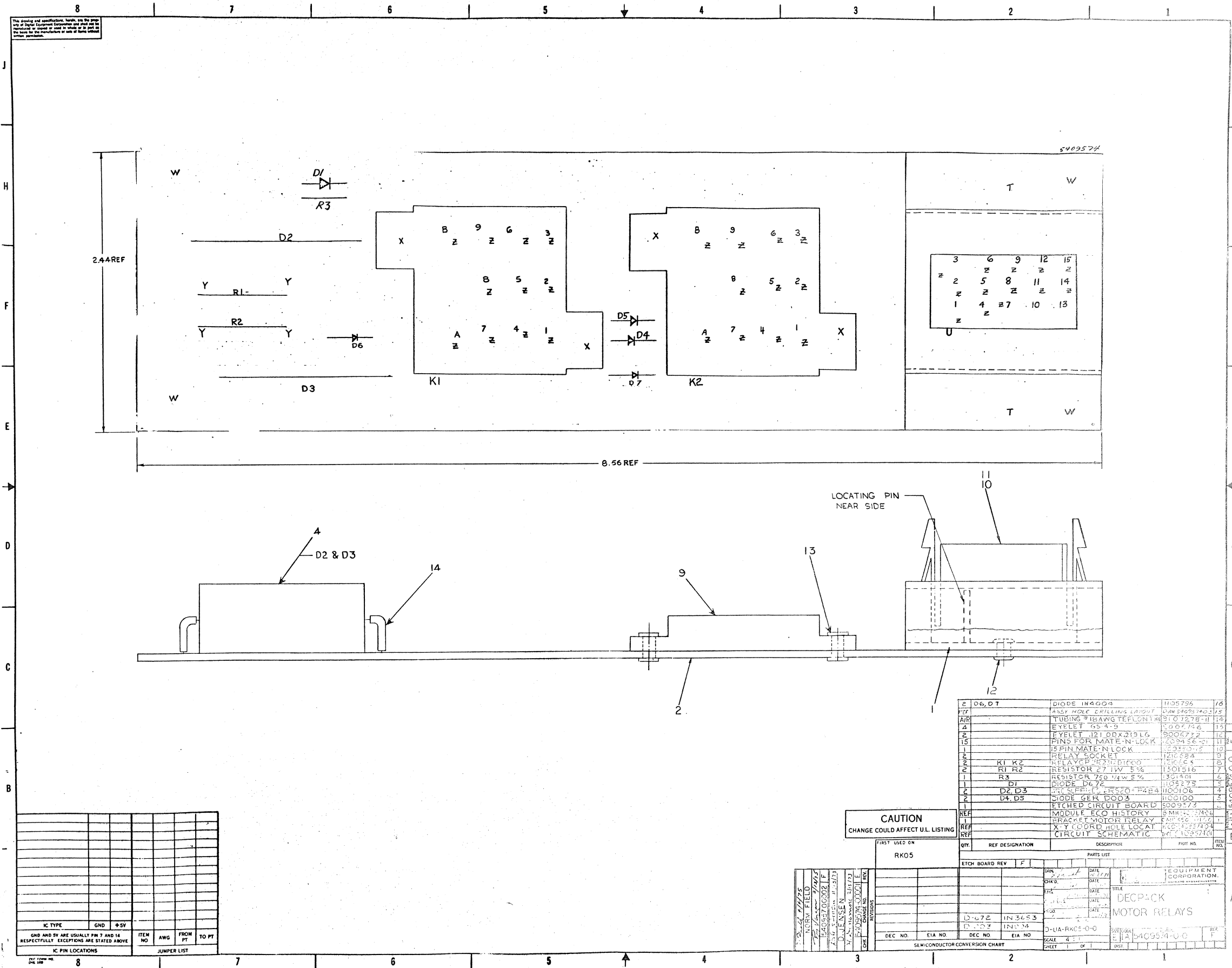
FIRST USED ON OPT/MOD RK05		ETCH BOARD REV D		PARTS LIST	
DEC NO.	EIA NO.	DEC NO.	EIA NO.	EQUIPMENT CORPORATION	
SEMICONDUCTOR CONVERSION CHART				TITLE CONTROL PANEL (RK05)	
NEXT NUMBER ASSY D-1A-RK05-2				EIA 5409698-0-0	

1. RELAY CONTACTS ARE SHOWN IN THE DE-ENERGIZED POSITIONS.
2. SAFETY RELAY L AND BLOWER MTR RELAY DR ARE THE SAME SIGNAL.
3. SPINDLE MOTOR RELAY L AND DISK RELAY DR ARE THE SAME SIGNAL.



QTY	REF DESIGNATION	DESCRIPTION		PART NO.	ITEM NO.
PARTS LIST					
ETCH BOARD REV	F				
		DRN. <i>ROGER J</i>	DATE <i>12-9-71</i>	<div style="border: 1px solid black; padding: 5px;"> <b>digital</b> EQUIPMENT CORPORATION  <small>MAYNARD, MASSACHUSETTS</small> </div> <div style="text-align: center; font-size: 2em; margin-top: 10px;">             DEC PACK              MOTOR RELAYS           </div>	
		CHK'D. <i>J. J. GUGLITTE</i>	DATE		
		ENG. <i>J. J. GUGLITTE</i>	DATE <i>12-15-71</i>		
		PROJ. ENG. <i>Dale J. Jensen</i>	DATE <i>16 Jan 72</i>		
		PROD. <i>Dale J. Jensen</i>	DATE <i>16 Jan 72</i>		
			DATE		
DEC NO.		EIA NO.	TITLE		
NEXT HIGHER ASSY			SIZE CODE		
SCALE			DCS		
SHEET			OF		
CONVERSION CHART			REV. F		

## SEMICONDUCTOR CONVERSION CHART





## ACCESSORY LIST

D	DOCUMENT
DN	DOCUMENT CHANGE NOTICE
PA	PAPER TAPE ASCII
PB	PAPER TAPE BINARY
PM	PAPER TAPE READ-IN-MODE

[illegible]

CHECKED	<i>[Signature]</i>
DATE	<i>8/17/72</i>
PROD	<i>Alvin Karpisberg</i>
DATE	<i>8/17/72</i>

ISSUED SECT.

	NOTE: The following items are additionally required when unit is shipped in a rack.
--	---

*NOTE:	If unit is shipped in a rack, Items 8 and 9 are mounted to the rack.
--------	--

**NOTE:	Attach the drive identification number set to the instruction sheet #DEC-16-(379)-1094-N573 using transparent adhesive tape. Insert sheet behind front cover of maintenance manual
---------	--

ASSY. NO.

**SHEET 1 OF 1**

NUMBER  
RK05-0-17

REV. E	ECO NO RK05- 00052
-----------	--------------------------