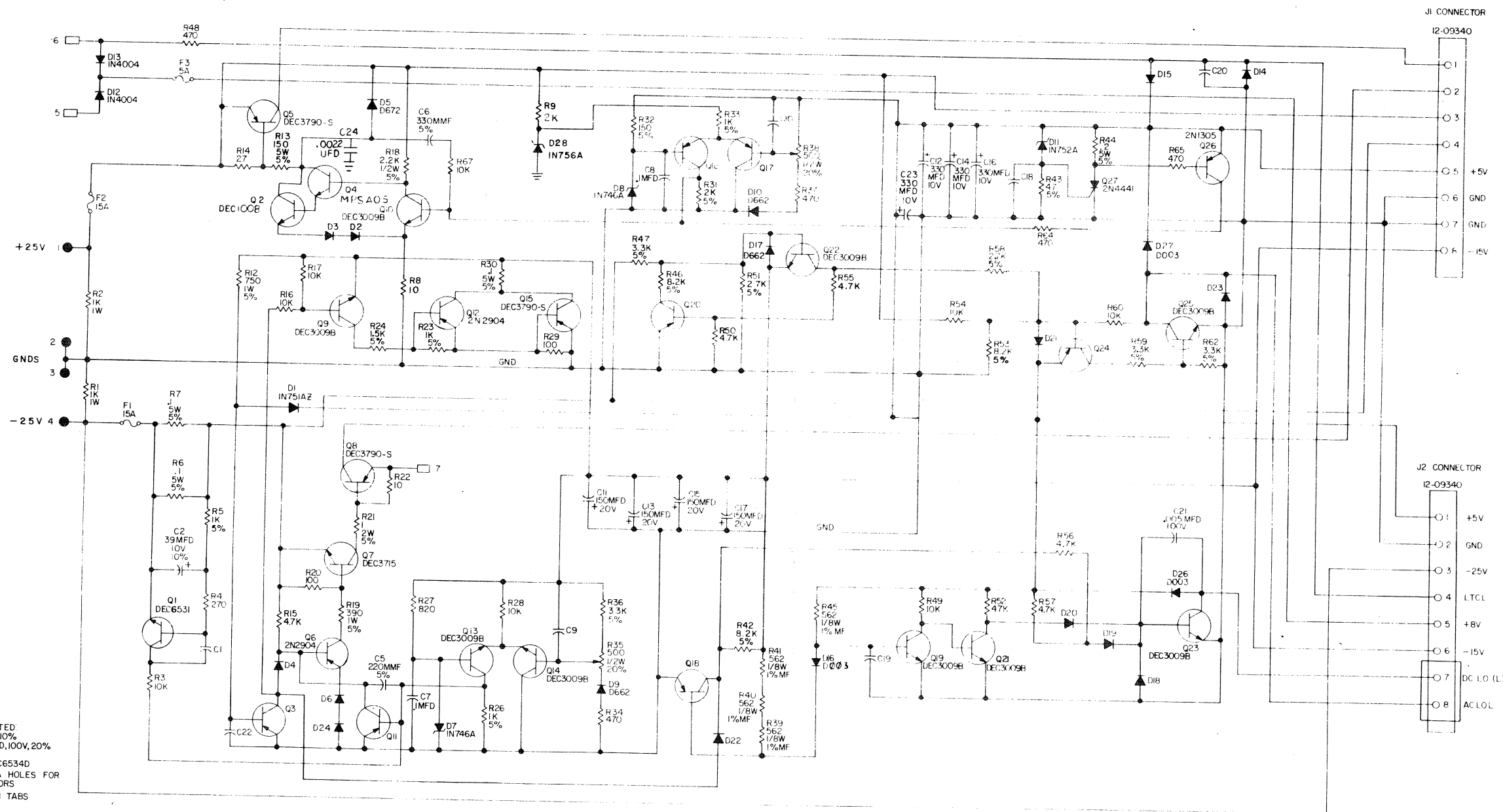


THIS SCHEMATIC IS FURNISHED ONLY FOR TEST AND MAINTENANCE PURPOSES. THE CIRCUITS ARE PROPRIETARY IN NATURE AND SHOULD BE TREATED ACCORDINGLY. COPYRIGHT 1971 BY DIGITAL EQUIPMENT CORPORATION.

3 1-0-0 5409267-01 1003 1215 ECO No 5409267-00005 Sheet 4 of 4



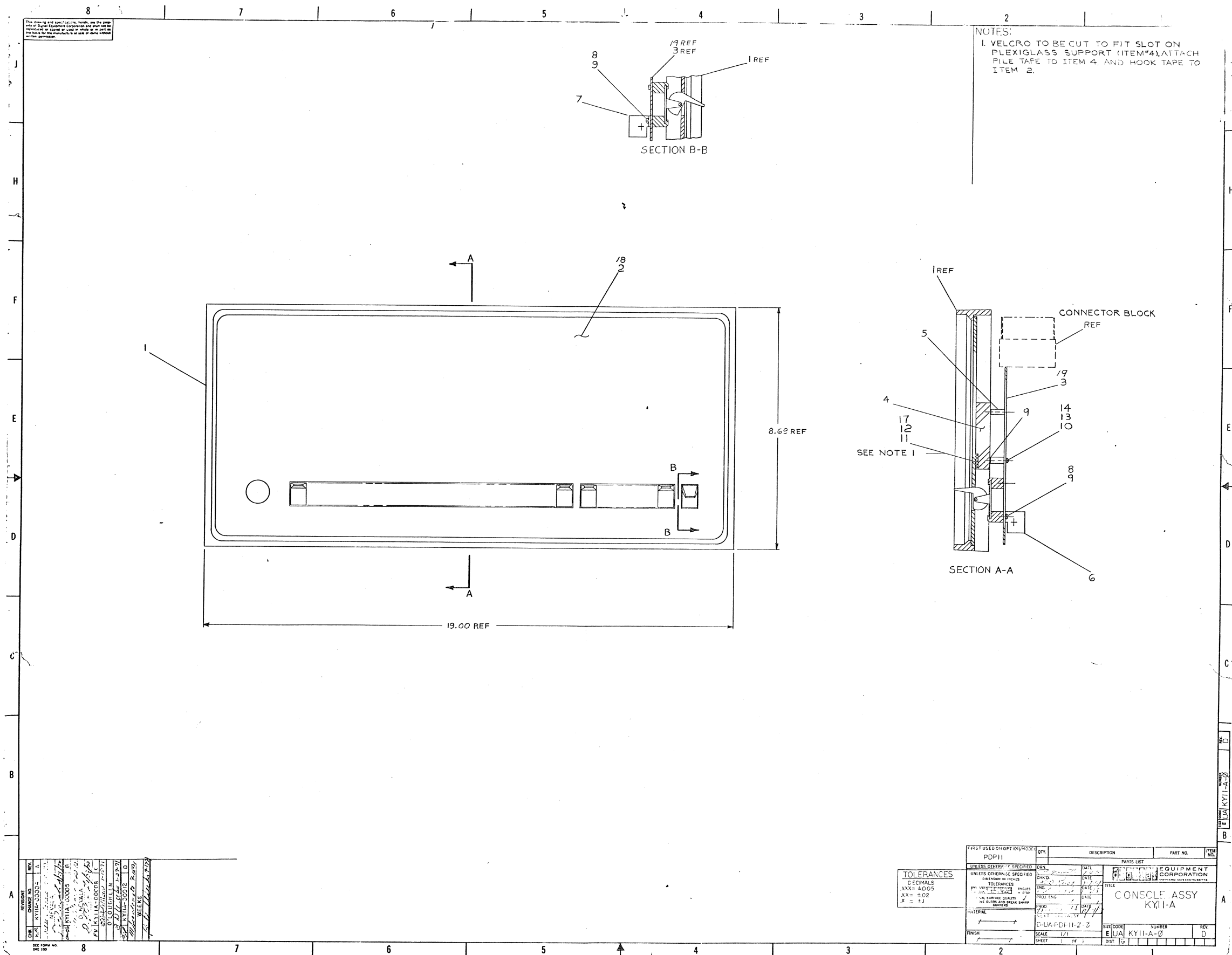
UNLESS OTHERWISE INDICATED:
RESISTORS ARE 1/4W, 10%
CAPACITORS ARE 0.1MFD, 100V, 20%
DIODES ARE D664
TRANSISTORS ARE DEC6534D
● INDICATES 1/16 DIA HOLES FOR MOUNTING CAPACITORS
□ INDICATES FAST ON TABS

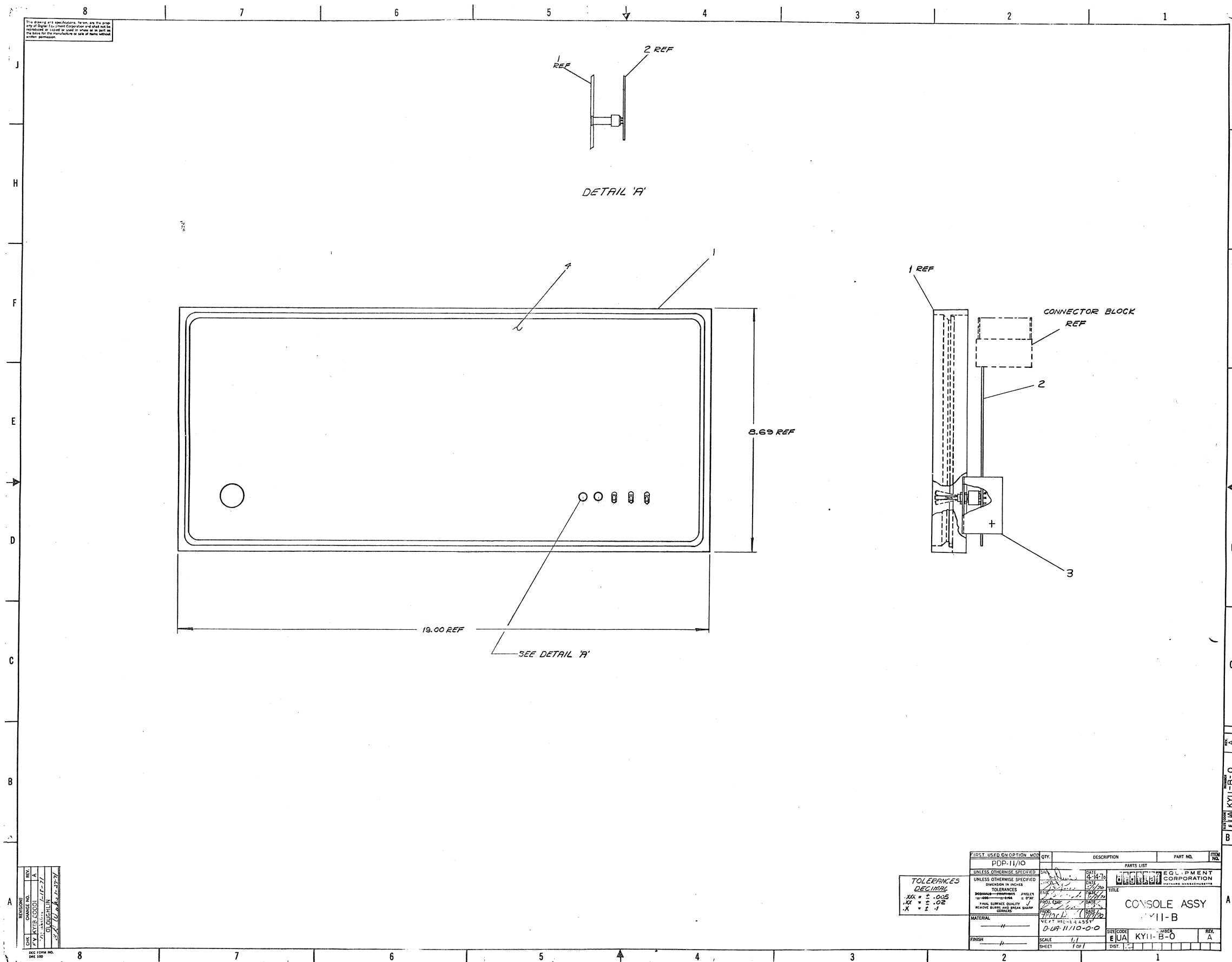
REV	DATE	BY	CHKD	APPD
1	12/2/71	S. COOPER		
2	12/2/71	S. COOPER		
3	12/2/71	S. COOPER		
4	12/2/71	S. COOPER		
5	12/2/71	S. COOPER		
6	12/2/71	S. COOPER		
7	12/2/71	S. COOPER		
8	12/2/71	S. COOPER		
9	12/2/71	S. COOPER		
10	12/2/71	S. COOPER		

TRANSISTOR & DIODE CONVERSION CHART			
DEC	EIA	DEC	EIA
2N1305	SAME	IN756A	IN994
DEC6531	MP6531	D662	SAME
2N4441	SAME	IN756A	IN994
D672	IN756A	IN756A	IN994
DEC3715	2N1305	D662	SAME
2N2904	SAME	IN756A	IN994
D662	IN756A	IN756A	IN994
D664	IN756A	IN756A	IN994
IN4001	SAME	IN756A	IN994
IN746A	SAME	IN756A	IN994
IN756A	SAME	IN756A	IN994

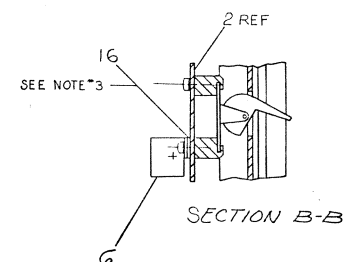
digital
EQUIPMENT CORPORATION
MAYNARD, MASSACHUSETTS

TITLE REGULATOR BOARD
5409267
SIZE CODE NUMBER
D CS 5409267-0-1
PRINTED CIRCUIT REV B



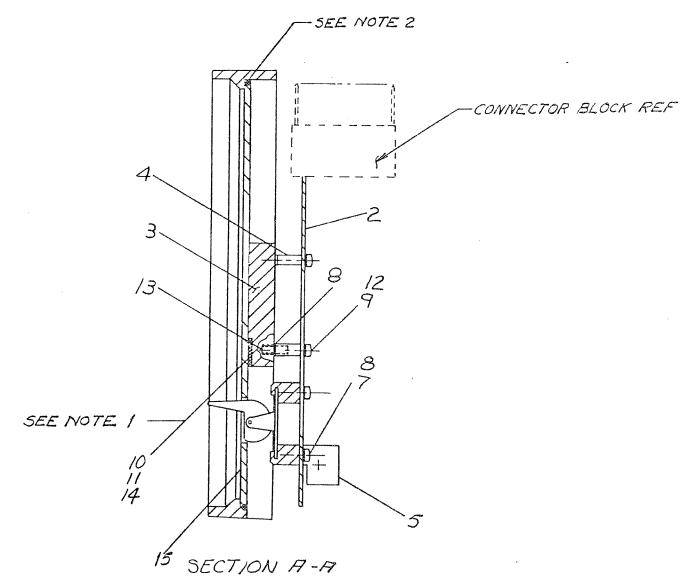
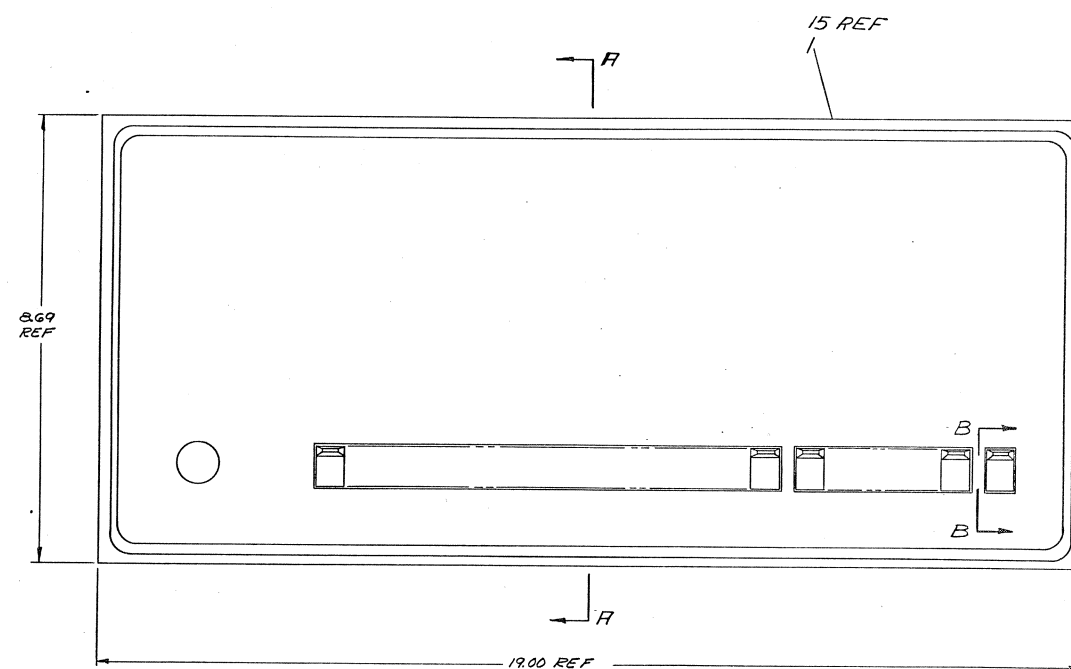


This drawing and its contents, herein, are the property of Digital Equipment Corporation and shall not be reproduced or used or used in whole or in part as the basis for the manufacture or sale of items without written permission.



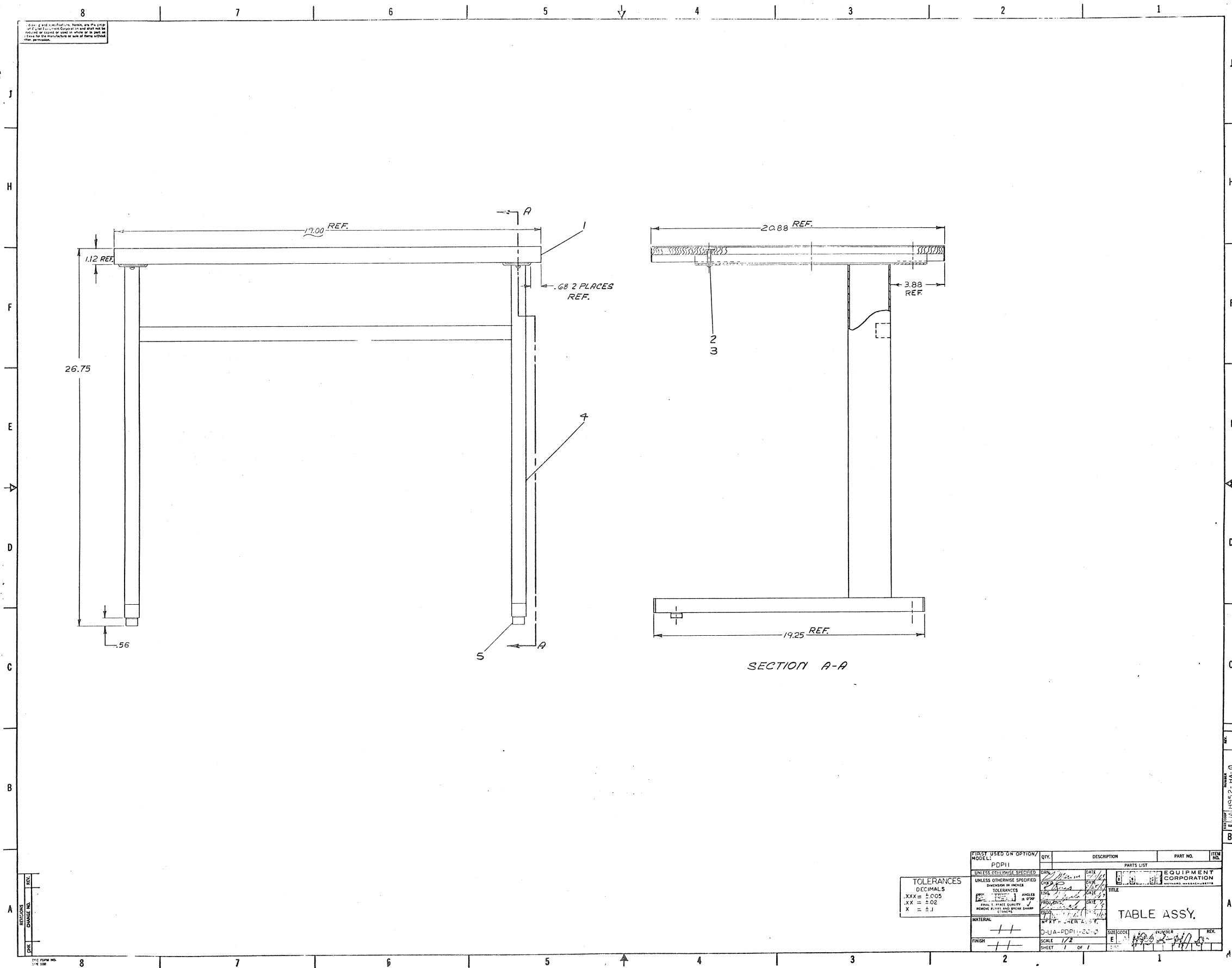
- NOTES:

1. VELCRO TO BE CUT TO FIT SLOT OVER LATCH
SUPPORT (ITEM #3). ATTACH ALL THINGS TO
#3) AND MAKE TIE TO ITEM #1.
2. ADHESIVE BOND ITEM #3 TO ITEM #1 WITH 3 OF
B/A RESIN OF CURE 12 HOURS AT ROOM TEMP
WHILE ON FACE, BOND AREA TO BE AS SHOWN IN
FIG 1.
3. NYLON WASHER (ITEM #6) MUST BE INSERTED
BEHIND BRACKET (ITEM #6) AND CONSOLE
BD ASSY (ITEM #2)



	REVISES		
CHK *	CHANGE NO.	REQ.	
Pap KYIC-00001	A		
C. Dewey	6-8-71		
C. DEWEY			
C. Dewey	6-8-71		

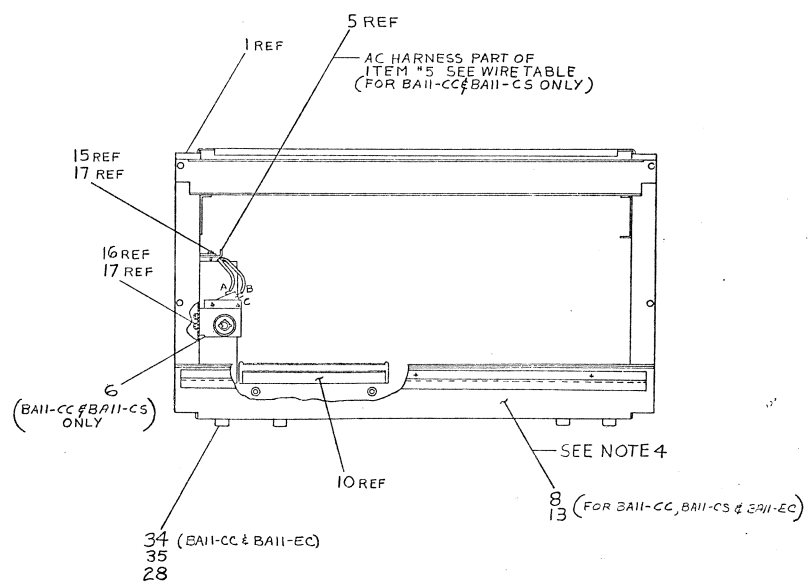
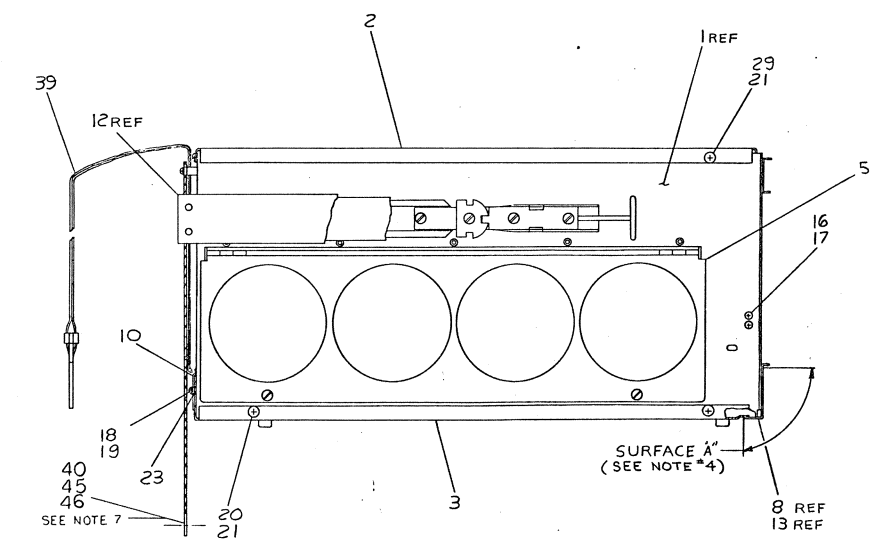
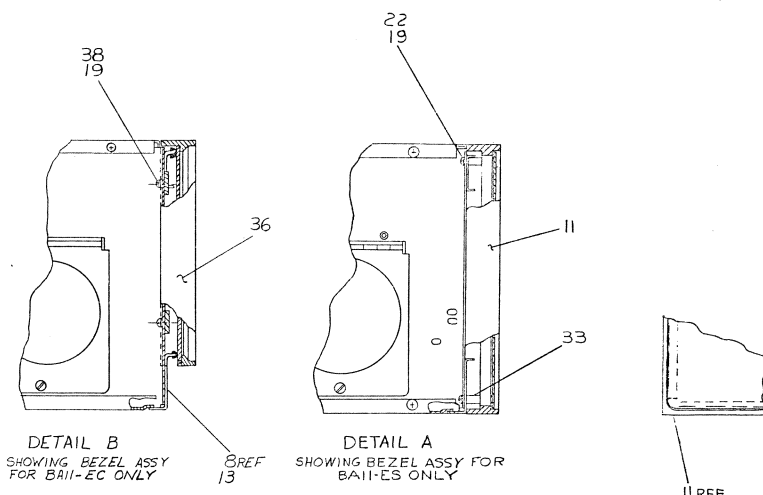
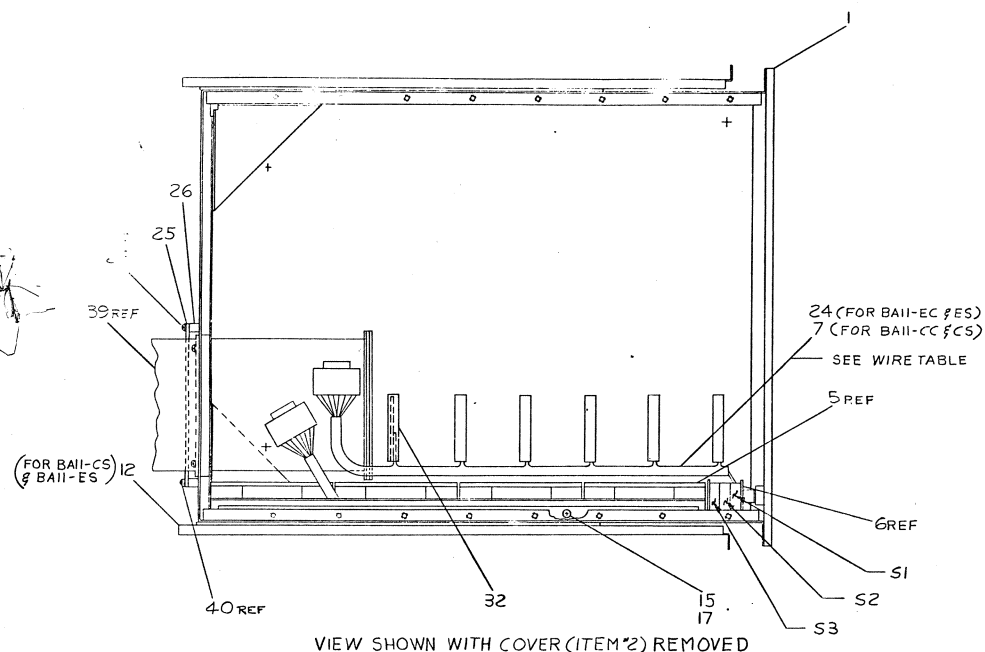
[illegible]



LEGEND	
TRUNK	VARIATION
BAIL-CC	TABLE MODEL (BASIC)
BAIL-CS	CABINET MODEL (BASIC)
BAIL-EX	TABLE MODEL (EXPANDER)
BAIL-ES	CABINET MODEL (EXPANDER)

NOTES:

- 1 FOR DWG INDEX LIST SEE L-101-H-1
- 2 FOR BASIC CONFIGURATION DWG SHOWING
RAIL INSTALLED IN CAB REFER TO DWG
L-101-H-2
- 3 FOR BREAKDOWN OF VARIATIONS SEE
DWG, AND PARTS LIST.
- 4 COVER SURFACE "A" AS INDICATED WITH
ITEM #9 (COVER STRIP) ENTIRE WIDTH,
USING ITEM #15 FOR RAIL COCS REC.
- 5 APPLY TAPE ITEM #8 & #1 TO BOTH SIDE
SIDE OR HLAY (ITEM #3) AROUND EN-
GES & BOWTIE THEN FURTER INLAP
INTERLAP WITH TAPE CEE DOWN.
PRESSURE WAX AROUND CEE TO IN-
SURE GOOD BOND.
- 6 FOR SUPER COVER (ITEM 4) INSTALLATION
REFER TO CWG D-101-H-2 & D-101-H-3
- 7 COVER GROUND STRAP (ITEM 40)
WITH TUBING (ITEM 45) AND TIE
BOTH ENDS WITH TIE WRAPS
(ITEM 46)



ONE	CHANCE NO.	RECY
BAI	00001	-
BAI	00002	-
BAI	00003	-
BAI	00004	-
BAI	00005	-
BAI	00006	-
BAI	00007	-
BAI	00008	-
BAI	00009	-
BAI	00010	-
BAI	00011	-
BAI	00012	-
BAI	00013	-
BAI	00014	-
BAI	00015	-
BAI	00016	-
BAI	00017	-
BAI	00018	-
BAI	00019	-
BAI	00020	-
BAI	00021	-
BAI	00022	-
BAI	00023	-
BAI	00024	-
BAI	00025	-
BAI	00026	-
BAI	00027	-
BAI	00028	-
BAI	00029	-
BAI	00030	-
BAI	00031	-
BAI	00032	-
BAI	00033	-
BAI	00034	-
BAI	00035	-
BAI	00036	-
BAI	00037	-
BAI	00038	-
BAI	00039	-
BAI	00040	-
BAI	00041	-
BAI	00042	-
BAI	00043	-
BAI	00044	-
BAI	00045	-
BAI	00046	-
BAI	00047	-
BAI	00048	-
BAI	00049	-
BAI	00050	-
BAI	00051	-
BAI	00052	-
BAI	00053	-
BAI	00054	-
BAI	00055	-
BAI	00056	-
BAI	00057	-
BAI	00058	-
BAI	00059	-
BAI	00060	-
BAI	00061	-
BAI	00062	-
BAI	00063	-
BAI	00064	-
BAI	00065	-
BAI	00066	-
BAI	00067	-
BAI	00068	-
BAI	00069	-
BAI	00070	-
BAI	00071	-
BAI	00072	-
BAI	00073	-
BAI	00074	-
BAI	00075	-
BAI	00076	-
BAI	00077	-
BAI	00078	-
BAI	00079	-
BAI	00080	-
BAI	00081	-
BAI	00082	-
BAI	00083	-
BAI	00084	-
BAI	00085	-
BAI	00086	-
BAI	00087	-
BAI	00088	-
BAI	00089	-
BAI	00090	-
BAI	00091	-
BAI	00092	-
BAI	00093	-
BAI	00094	-
BAI	00095	-
BAI	00096	-
BAI	00097	-
BAI	00098	-
BAI	00099	-
BAI	00100	-

[illegible]