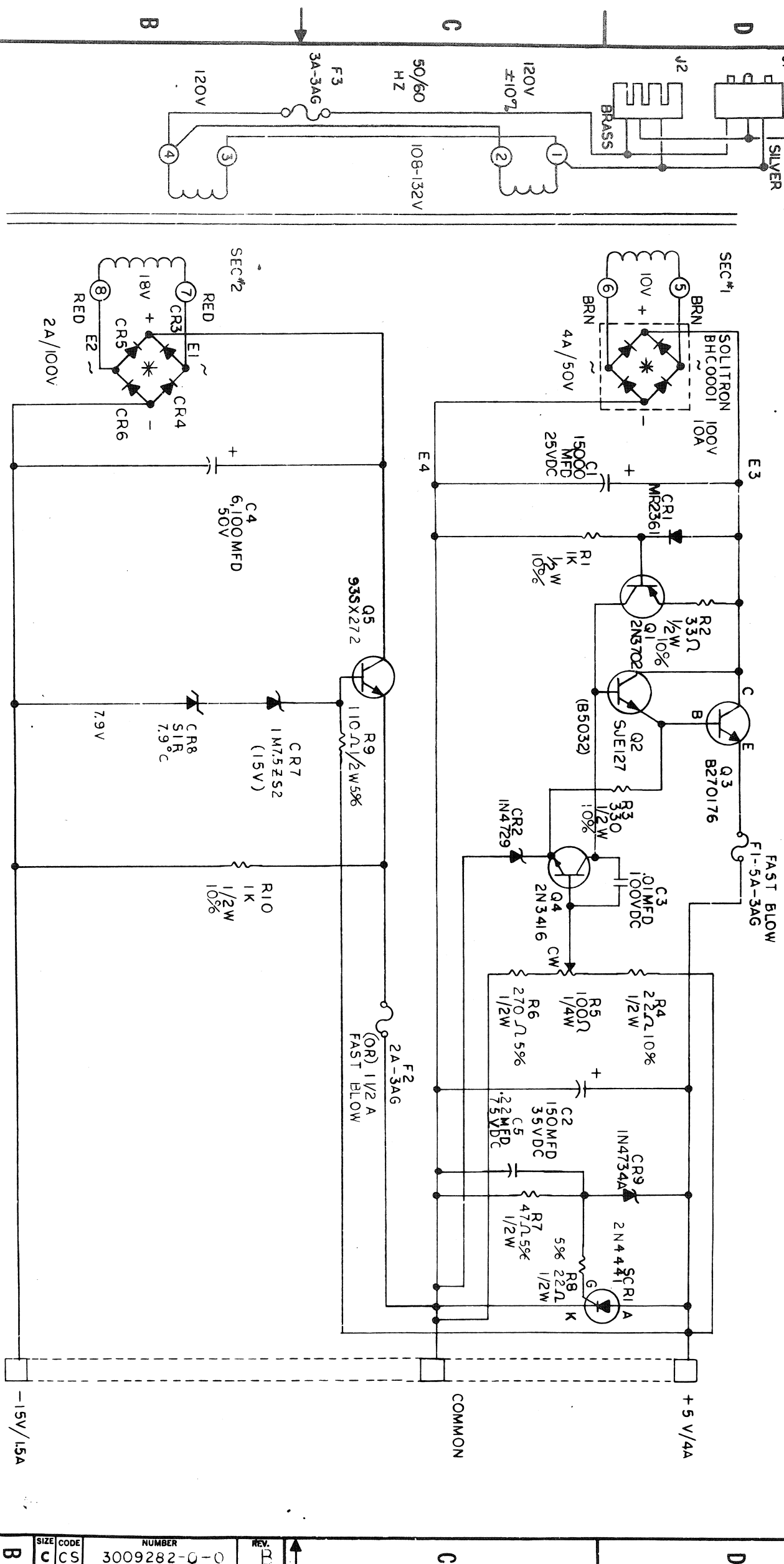




This drawing and specifications, including the notes, are the property of the United States Government and are loaned to you for your information only. It and its contents are not to be distributed outside your agency without the express written permission of the Department of Defense.

R5 = POT = +1377014, BD91038  
CR3, CR4, CR5, CR6 = IN5392  
T1 = 101748, -9966936  
\* HEAT SINK ADDED TO BRIDGE



REVISIONS		
CHK	CHANGE NO.	REV.
248	H716-00001	A
M. ARSENAULT		
E. Wilson 5/24/71		
EV	H716-00002	B
K. PIERCE		
H. Pierce 5/26/71		

NOTE:  
THIS CIRCUIT SCHEMATIC  
HAS BEEN REDRAWN WITH  
THE PERMISSION OF  
WANLESS ELECTRIC CO.  
SEE WANLESS DRAWING  
NUMBER C-101418, MODEL  
C-148

UNLESS OTHERWISE SPECIFIED	
DIMENSIONS IN INCHES	
TOLERANCES	ANGLES
DIMENSIONS	FRACTIONS
± .005	± 1/64
± .030	± 0.50
FINAL SURFACE QUALITY	
REMOVE BURRS AND BREAK SHARP CORNERS	
MATERIAL	
FINISH	

QTY.	DESCRIPTION	PART NO.	ITEM NO.
PARTS LIST			
1	6J5X272	935X272	1
1	6AR5	110A1/2W586	2
1	6AR5	110A1/2W586	3
1	6AR5	110A1/2W586	4
1	6AR5	110A1/2W586	5
1	6AR5	110A1/2W586	6
1	6AR5	110A1/2W586	7
1	6AR5	110A1/2W586	8
1	6AR5	110A1/2W586	9
1	6AR5	110A1/2W586	10
1	6AR5	110A1/2W586	11
1	6AR5	110A1/2W586	12
1	6AR5	110A1/2W586	13
1	6AR5	110A1/2W586	14
1	6AR5	110A1/2W586	15
1	6AR5	110A1/2W586	16
1	6AR5	110A1/2W586	17
1	6AR5	110A1/2W586	18
1	6AR5	110A1/2W586	19
1	6AR5	110A1/2W586	20
1	6AR5	110A1/2W586	21
1	6AR5	110A1/2W586	22
1	6AR5	110A1/2W586	23
1	6AR5	110A1/2W586	24
1	6AR5	110A1/2W586	25
1	6AR5	110A1/2W586	26
1	6AR5	110A1/2W586	27
1	6AR5	110A1/2W586	28
1	6AR5	110A1/2W586	29
1	6AR5	110A1/2W586	30
1	6AR5	110A1/2W586	31
1	6AR5	110A1/2W586	32
1	6AR5	110A1/2W586	33
1	6AR5	110A1/2W586	34
1	6AR5	110A1/2W586	35
1	6AR5	110A1/2W586	36
1	6AR5	110A1/2W586	37
1	6AR5	110A1/2W586	38
1	6AR5	110A1/2W586	39
1	6AR5	110A1/2W586	40
1	6AR5	110A1/2W586	41
1	6AR5	110A1/2W586	42
1	6AR5	110A1/2W586	43
1	6AR5	110A1/2W586	44
1	6AR5	110A1/2W586	45
1	6AR5	110A1/2W586	46
1	6AR5	110A1/2W586	47
1	6AR5	110A1/2W586	48
1	6AR5	110A1/2W586	49
1	6AR5	110A1/2W586	50
1	6AR5	110A1/2W586	51
1	6AR5	110A1/2W586	52
1	6AR5	110A1/2W586	53
1	6AR5	110A1/2W586	54
1	6AR5	110A1/2W586	55
1	6AR5	110A1/2W586	56
1	6AR5	110A1/2W586	57
1	6AR5	110A1/2W586	58
1	6AR5	110A1/2W586	59
1	6AR5	110A1/2W586	60
1	6AR5	110A1/2W586	61
1	6AR5	110A1/2W586	62
1	6AR5	110A1/2W586	63
1	6AR5	110A1/2W586	64
1	6AR5	110A1/2W586	65
1	6AR5	110A1/2W586	66
1	6AR5	110A1/2W586	67
1	6AR5	110A1/2W586	68
1	6AR5	110A1/2W586	69
1	6AR5	110A1/2W586	70
1	6AR5	110A1/2W586	71
1	6AR5	110A1/2W586	72
1	6AR5	110A1/2W586	73
1	6AR5	110A1/2W586	74
1	6AR5	110A1/2W586	75
1	6AR5	110A1/2W586	76
1	6AR5	110A1/2W586	77
1	6AR5	110A1/2W586	78
1	6AR5	110A1/2W586	79
1	6AR5	110A1/2W586	80
1	6AR5	110A1/2W586	81
1	6AR5	110A1/2W586	82
1	6AR5	110A1/2W586	83
1	6AR5	110A1/2W586	84
1	6AR5	110A1/2W586	85
1	6AR5	110A1/2W586	86
1	6AR5	110A1/2W586	87
1	6AR5	110A1/2W586	88
1	6AR5	110A1/2W586	89
1	6AR5	110A1/2W586	90
1	6AR5	110A1/2W586	91
1	6AR5	110A1/2W586	92
1	6AR5	110A1/2W586	93
1	6AR5	110A1/2W586	94
1	6AR5	110A1/2W586	95
1	6AR5	110A1/2W586	96
1	6AR5	110A1/2W586	97
1	6AR5	110A1/2W586	98
1	6AR5	110A1/2W586	99
1	6AR5	110A1/2W586	100

QTY.	DESCRIPTION	PART NO.	ITEM NO.
1	6J5X272	935X272	1
1	6AR5	110A1/2W586	2
1	6AR5	110A1/2W586	3
1	6AR5	110A1/2W586	4
1	6AR5	110A1/2W586	5
1	6AR5	110A1/2W586	6
1	6AR5	110A1/2W586	7
1	6AR5	110A1/2W586	8
1	6AR5	110A1/2W586	9
1	6AR5	110A1/2W586	10
1	6AR5	110A1/2W586	11
1	6AR5	110A1/2W586	12
1	6AR5	110A1/2W586	13
1	6AR5	110A1/2W586	14
1	6AR5	110A1/2W586	15
1	6AR5	110A1/2W586	16
1	6AR5	110A1/2W586	17
1	6AR5	110A1/2W586	18
1	6AR5	110A1/2W586	19
1	6AR5	110A1/2W586	20
1	6AR5	110A1/2W586	21
1	6AR5	110A1/2W586	22
1	6AR5	110A1/2W586	23
1	6AR5	110A1/2W586	24
1	6AR5	110A1/2W586	25
1	6AR5	110A1/2W586	26
1	6AR5	110A1/2W586	27
1	6AR5	110A1/2W586	28
1	6AR5	110A1/2W586	29
1	6AR5	110A1/2W586	30
1	6AR5	110A1/2W586	31
1	6AR5	110A1/2W586	32
1	6AR5	110A1/2W586	33
1	6AR5	110A1/2W586	34
1	6AR5	110A1/2W586	35
1	6AR5	110A1/2W586	36
1	6AR5	110A1/2W586	37
1	6AR5	110A1/2W586	38
1	6AR5	110A1/2W586	39
1	6AR5	110A1/2W586	40
1	6AR5	110A1/2W586	41
1	6AR5	110A1/2W586	42
1	6AR5	110A1/2W586	43
1	6AR5	110A1/2W586	44
1	6AR5	110A1/2W586	45
1	6AR5	110A1/2W586	46
1	6AR5	110A1/2W586	47
1	6AR5	110A1/2W586	48
1	6AR5	110A1/2W586	49
1	6AR5	110A1/2W586	50
1	6AR5	110A1/2W586	51
1	6AR5	110A1/2W586	52
1	6AR5	110A1/2W586	53
1	6AR5	110A1/2W586	54
1	6AR5	110A1/2W586	55
1	6AR5	110A1/2W586	56
1	6AR5	110A1/2W586	57
1	6AR5	110A1/2W586	58
1	6AR5	110A1/2W586	59
1	6AR5	110A1/2W586	60
1	6AR5	110A1/2W586	61
1	6AR5	110A1/2W586	62
1	6AR5	110A1/2W586	63
1	6AR5	110A1/2W586	64
1	6AR5	110A1/2W586	65
1	6AR5	110A1/2W586	66
1	6AR5	110A1/2W586	67
1	6AR5	110A1/2W586	68
1	6AR5	110A1/2W586	69
1	6AR5	110A1/2W586	70
1	6AR5	110A1/2W586	71
1	6AR5	110A1/2W586	72
1	6AR5	110A1/2W586	73
1	6AR5	110A1/2W586	74
1	6AR5	110A1/2W586	75
1	6AR5	110A1/2W586	76
1	6AR5	110A1/2W586	77
1	6AR5	110A1/2W586	78
1	6AR5	110A1/2W586	79
1	6AR5	110A1/2W586	80
1	6AR5	110A1/2W586	81
1	6AR5	110A1/2W586	82
1	6AR5	110A1/2W586	83
1	6AR5	110A1/2W586	84
1	6AR5	110A1/2W586	85
1	6AR5	110A1/2W586	86
1	6AR5	110A1/2W586	87
1	6AR5	110A1/2W586	88
1	6AR5	110A1/2W586	89
1	6AR5	110A1/2W586	90
1	6AR5	110A1/2W586	91
1	6AR5	110A1/2W586	92
1	6AR5	110A1/2W586	93
1	6AR5	110A1/2W586	94
1	6AR5	110A1/2W586	95
1	6AR5	110A1/2W586	96
1	6AR5	110A1/2W586	97
1	6AR5	110A1/2W586	98
1	6AR5	110A1/2W586	99
1	6AR5	110A1/2W586	100

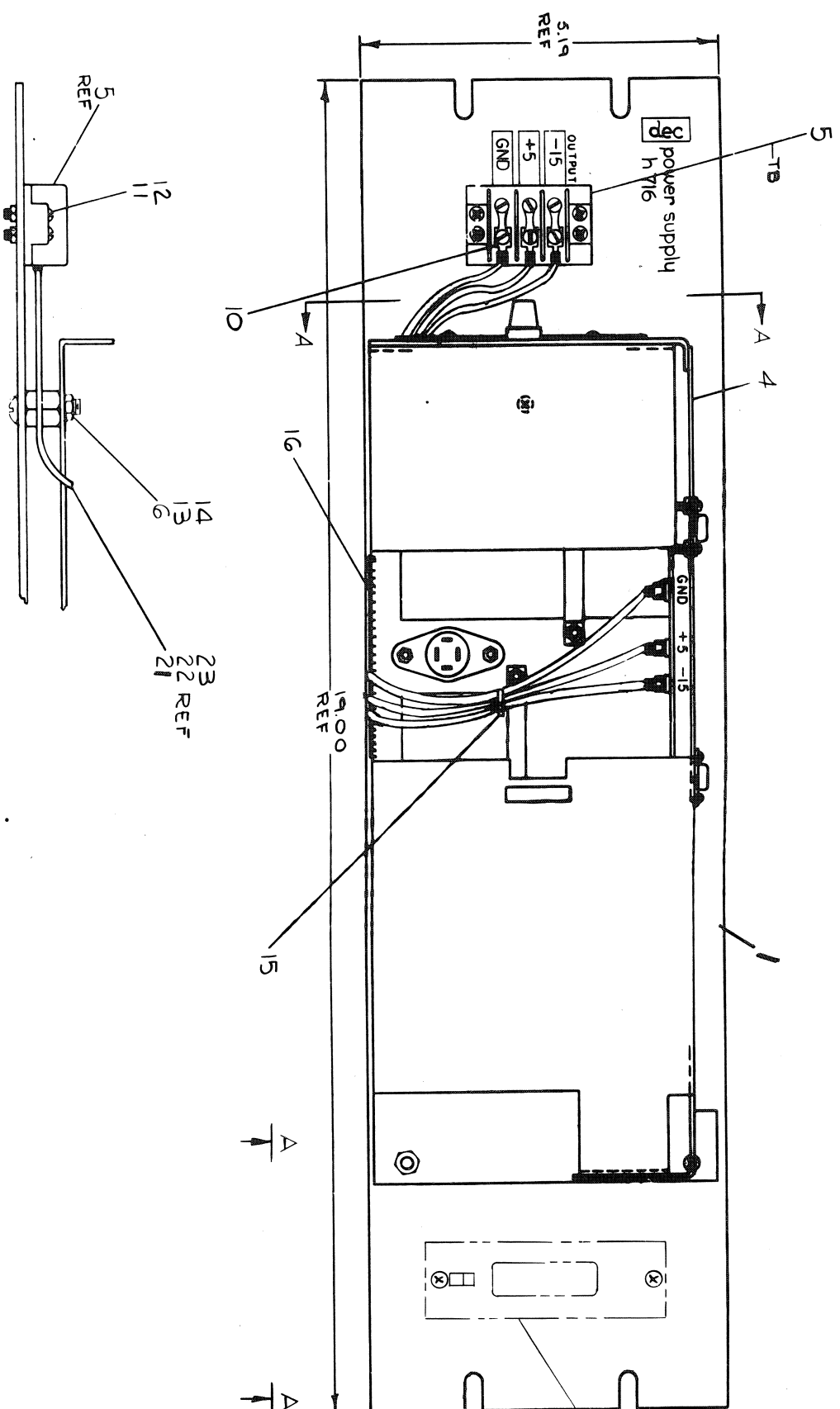
QTY.	DESCRIPTION	PART NO.	ITEM NO.
1	6J5X272	935X272	1
1	6AR5	110A1/2W586	2
1	6AR5	110A1/2W586	3
1	6AR5	110A1/2W586	4
1	6AR5	110A1/2W586	5
1	6AR5	110A1/2W586	6
1	6AR5	110A1/2W586	7
1	6AR5	110A1/2W586	8
1	6AR5	110A1/2W586	9
1	6AR5	110A1/2W586	10
1	6AR5	110A1/2W586	11
1	6AR5	110A1/2W586	12
1	6AR5	110A1/2W586	13
1	6AR5	110A1/2W586	14
1	6AR5	110A1/2W586	15
1	6AR5	110A1/2W586	16
1	6AR5	110A1/2W586	17
1	6AR5	110A1/2W586	18
1	6AR5	110A1/2W586	19
1	6AR5	110A1/2W586	20
1	6AR5	110A1/2W586	21
1	6AR5	110A1/2W586	22
1	6AR5	110A1/2W586	23
1	6AR5	110A1/2W586	24
1	6AR5	110A1/2W586	25
1	6AR5	110A1/2W586	26
1	6AR5	110A1/2W586	27
1	6AR5	110A1/2W586	28
1	6AR5	110A1/2W586	29
1	6AR5	110A1/2W586	30
1	6AR5	110A1/2W586	31
1	6AR5	110A1/2W586	32
1	6AR5	110A1/2W586	33
1	6AR5	110A1/2W586	34
1	6AR5	110A1/2W586	35
1	6AR5	110A1/2W586	36
1	6AR5	110A1/2W586	37
1	6AR5	110A1/2W586	38
1	6AR5	110A1/2W586	39
1	6AR5	110A1/2W586	40
1	6AR5	110A1/2W586	41
1	6AR5	110A1/2W586	42
1	6AR5	110A1/2W586	43
1	6AR5	110A1/2W586	44
1	6AR5	110A1/2W586	45
1	6AR5	110A1/2W586	46
1	6AR5	110A1/2W586	47
1	6AR5	110A1/2W586	48
1	6AR5	110A1/2W586	49
1	6AR5	110A1/2W586	50
1	6AR5	110A1/2W586	51
1	6AR5	110A1/2W586	52
1	6AR5	110A1/2W586	53
1	6AR5	110A1/2W586	54
1	6AR5	110A1/2W586	55
1	6AR5	110A1/2W586	56
1	6AR5	110A1/2W586	57
1	6AR5	110A1/2W586	58
1	6AR5	110A1/2W586	59
1	6AR5	110A1/2W586	60
1	6AR5	110A1/2W586	61
1	6AR5	110A1/2W586	62
1	6AR5	110A1/2W586	63
1	6AR5	110A1/2W586	64
1	6AR5	110A1/2W586	65
1	6AR5	110A1/2W586	66
1	6AR5	110A1/2W586	67
1	6AR5	110A1/2W586	68
1	6AR5	110A1/2W586	69
1	6AR5	110A1/2W586	70
1	6AR5	110A1/2W586	71
1	6AR5	110A1/2W586	72
1	6AR5	110A1/2W586	73
1	6AR5	110A1/2W586	74
1	6AR5	110A1/2W586	75
1	6AR5	110A1/2W586	76
1	6AR5	110A1/2W586	77
1	6AR5	110A1/2W586	78
1	6AR5	110A1/2W586	79
1	6AR5	110A1/2W586	80
1	6AR5	110A1/2W586	81
1	6AR5	110A1/2W586	82
1	6AR5	110A1/2W586	83
1	6AR5	110A1/2W586	84
1	6AR5	110A1/2W586	85
1	6AR5	110A1/2W586	86
1	6AR5	110A1/2W586	87
1	6AR5	110A1/2W586	88
1	6AR5	110A1/2W586	89
1	6AR5	110A1/2W586	90
1	6AR5	110A1/2W586	91
1	6AR5	110A1/2W586	92
1	6AR5	110A1/2W586	93
1	6AR5	110A1/2W586	94
1	6AR5	110A1/2W586	95
1	6AR5	110A1/2W586	96
1	6AR5	110A1/2W586	97
1	6AR5	110A1/2W586	98
1	6AR5	110A1/2W586	99
1	6AR5	110A1/2W586	100

existing and specifications, herein, are the property of Digital Equipment Corporation and shall not be reproduced or copied or used in whole or in part on the basis for the manufacture or sale of forms without written permission.

LEGEND	
NUMBER	VARIATION
H716-Ø	W/ANLESS RS WITH 11/1V RECEPTACLE
H716-A	H716 WITH 230V RECEPTACLE
H716-B	137 H716 (1/5) RECEPTACLE
H716-C	H716-B WITH OUTPUT RELAY 5A-1C-ED FROM + 5/ (11/5V)
H716-D	H716-B WITH 230V RECEPTACLE

NOTES:

1. FOR H716 A OR H716 C (2301)  
REMOVE EXISTING DECAL AND  
ADD NEW DECAL (ITEM #25).



SEE VIEW A-A  
SHEET #2.

REVISIONS		
CHK	CHANGE NO.	REV.

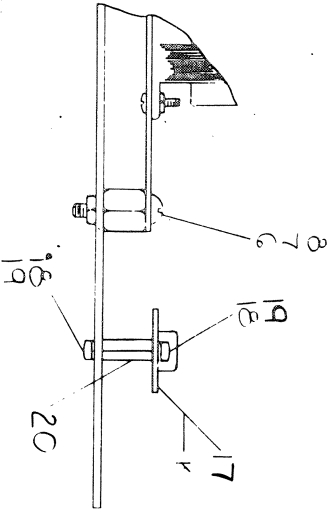
[illegible]

QTY.	DESCRIPTION	PART NO.	TRUCK NO.
PARTS LIST			

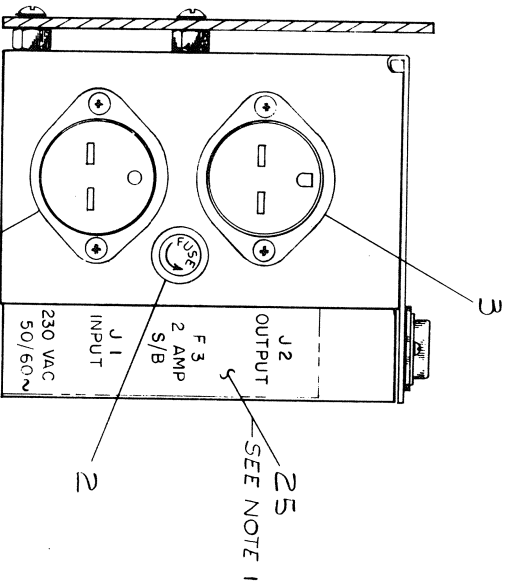
This drawing and specifications, when taken in conjunction with the drawings and specifications of the equipment to which it is applied, shall constitute the basis for the manufacture or sale of items without further reference to this drawing.

WIRE TABLE H716-B&D				
ITEM NO.	DESCRIPTION	FROM CONNECTION	TO CONNECTION	WITH
23	18 BLK	PS - GND	TB - GND	0
21	18 RED	PS - + 5	TB - + 5	0
22	18 BLU	PS - - 5	TB - - 15	0

WIRE TABLE H716-C				
ITEM NO.	DESCRIPTION	FROM CONNECTION	TO CONNECTION	WITH
23	18 BLK	PS - GND	TB - GND	10
23	18 BLK	PS - GND	K - GND	SOLDER
21	18 RED	PS - + 5	TB - + 5	10
21	18 RED	PS - + 5	K - + 5	SOLDER
22	18 BLU	PS - - 15	K - - 15	SOLDER
22	18 BLU	K - - 15	TB - - 15	10



SECTION A-A  
SCALE: 1/1



REVISIONS	
REV	CHANGE NO
CHK	

FIRST USED ON OPTION/MODEL		QTY	DESCRIPTION	PART NO	ITEM NO
UNLESS OTHERWISE SPECIFIED		DATE	DATE	DATE	DATE
DIMENSION IN INCHES		DATE	DATE	DATE	DATE
TOLERANCES		DATE	DATE	DATE	DATE
DECIMALS		DATE	DATE	DATE	DATE
ANGLES		DATE	DATE	DATE	DATE
XXX .005		DATE	DATE	DATE	DATE
XX .02		DATE	DATE	DATE	DATE
X .1		DATE	DATE	DATE	DATE
REMOVE BURRS AND BREAK SHARP CORNERS SURFACE QUALITY		DATE	DATE	DATE	DATE
MATERIAL		DATE	DATE	DATE	DATE
NEXT HIGHER ASSY		DATE	DATE	DATE	DATE
FINISH		DATE	DATE	DATE	DATE
SCALE		DATE	DATE	DATE	DATE
SHEET 2 OF 2		DATE	DATE	DATE	DATE
DUAH716-0-0		DATE	DATE	DATE	DATE
NUMBER		DATE	DATE	DATE	DATE
REV		DATE	DATE	DATE	DATE

POWER SUPPLY  
H716

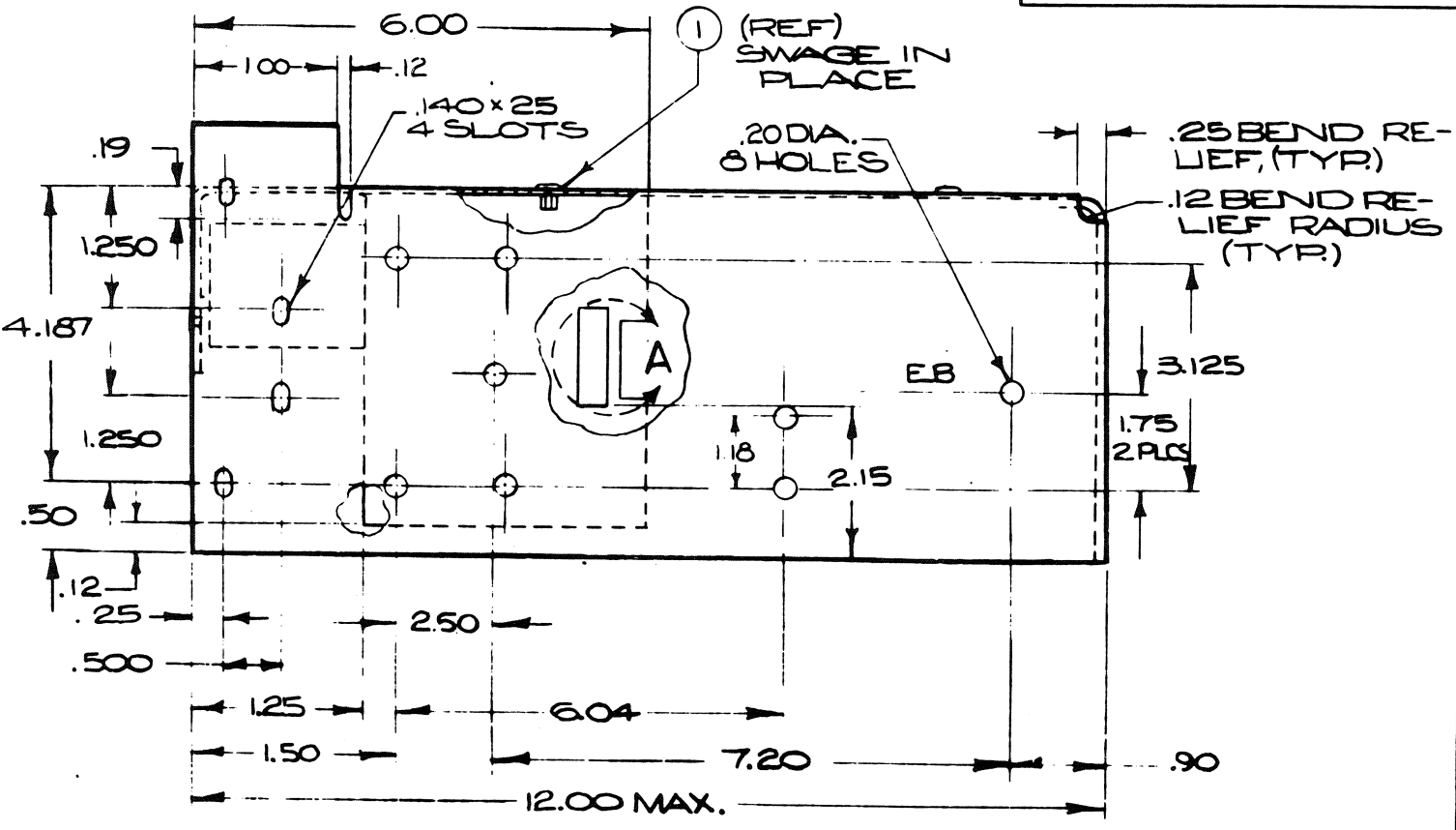
digital EQUIPMENT CORPORATION

SIZE CODE NUMBER  
DUAH716-0-0

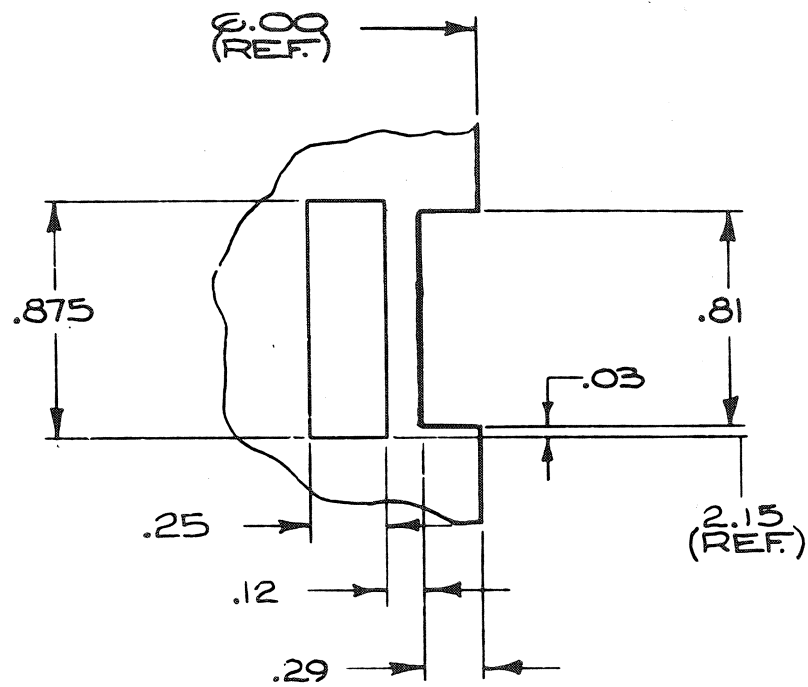




digital EQUIPMENT CORPORATION	PURCHASE SPECIFICATION	Number 30-09282	Rev c
		Date 1/6/69	
H716 POWER SUPPLY		Revisions	
MECHANICAL		Change No. A: SOLDER OUTPUT LUGS AND FUSE CLIPS TO RIVETS. R. NUNBY 10/23/70	
1. Maximum Dimensions 5-1/4 H x 4-1/8 W x 12 D. Must mount on right end of DEC H911 Mounting Panel. See attached sketch.		B: AMPHENOL CHANGED TO ARROW HART AND HUBBELL. DIMENSIONS CHANGED.	
2. Power input via ARROW HART 5278 (or equivalent) connected with an HUBBELL 5256 (or equivalent) in parallel. Receptacles to be mounted in rear panel.		C: CHANGED DIMENSIONS FOR RECEPTACLES AS SHOWN ON SHEET 6 OF 7.	
3. Sheet metal construction to be sufficiently rigid to sustain without damage normal shipping shocks when riveted to an H911 Mounting Panel mounted in DEC standard 19" cabinet.			
4. Electrical connections (low voltage) by Faston Amp #42117-2 terminals. SOLDER FASTONS AND FUSE CLIPS TO RIVETS ON BOTH SIDES OF P/C BOARD.			
ELECTRICAL			
1. Input: 47-63 HZ. (Normally supplied wired for 117 V, may be changed by transformer tap connections.) 105-130 V, 117 V nominal, 210-260 V, 234 V. Nominal.		Eng & Cady Drawn QC	
2. Output 1: +5 volts (adjustable over range of 4.5 to 5.5) 0 - 4 AMPS MAXIMUM. Line-Load-Ripple total regulation + 3%. Overvoltage protection threshold at 6-6.5 with a response time of 10-50 microseconds. Maximum voltage not to exceed 7 V.		Eng R. B. BIRD QC R. B. BIRD	
3. Output 2: -15 volts + 5% at 0 - 1.5 AMP MAXIMUM. Line-Load Ripple total regulation + 5%.		Purch R. B. BIRD	
4. Above specifications over temperature 0-55°C ambient.		TITLE: H 716 POWER SUPPLY	
5. Sheet #7 is AC Protection Bracket.		Unless other specified use:	
		Fractions ±	Decimals ±
		Angles ±	
FIRST USED ON: TR02, DW08		Sheet 1 of 7	Scale
D.E.C. PART NO. 30-09282		Number 30-09282	Rev c
PH-2		100-4 63	

digital EQUIPMENT CORPORATION	PURCHASE SPECIFICATION	Number 30-09282	Rev c
		Date 1/8/69	
		Sheet 2 of 7	
D.E.C. PART NO. 30-09282		Scale	
		Number 30-09282	Rev c

Date 1/7/69

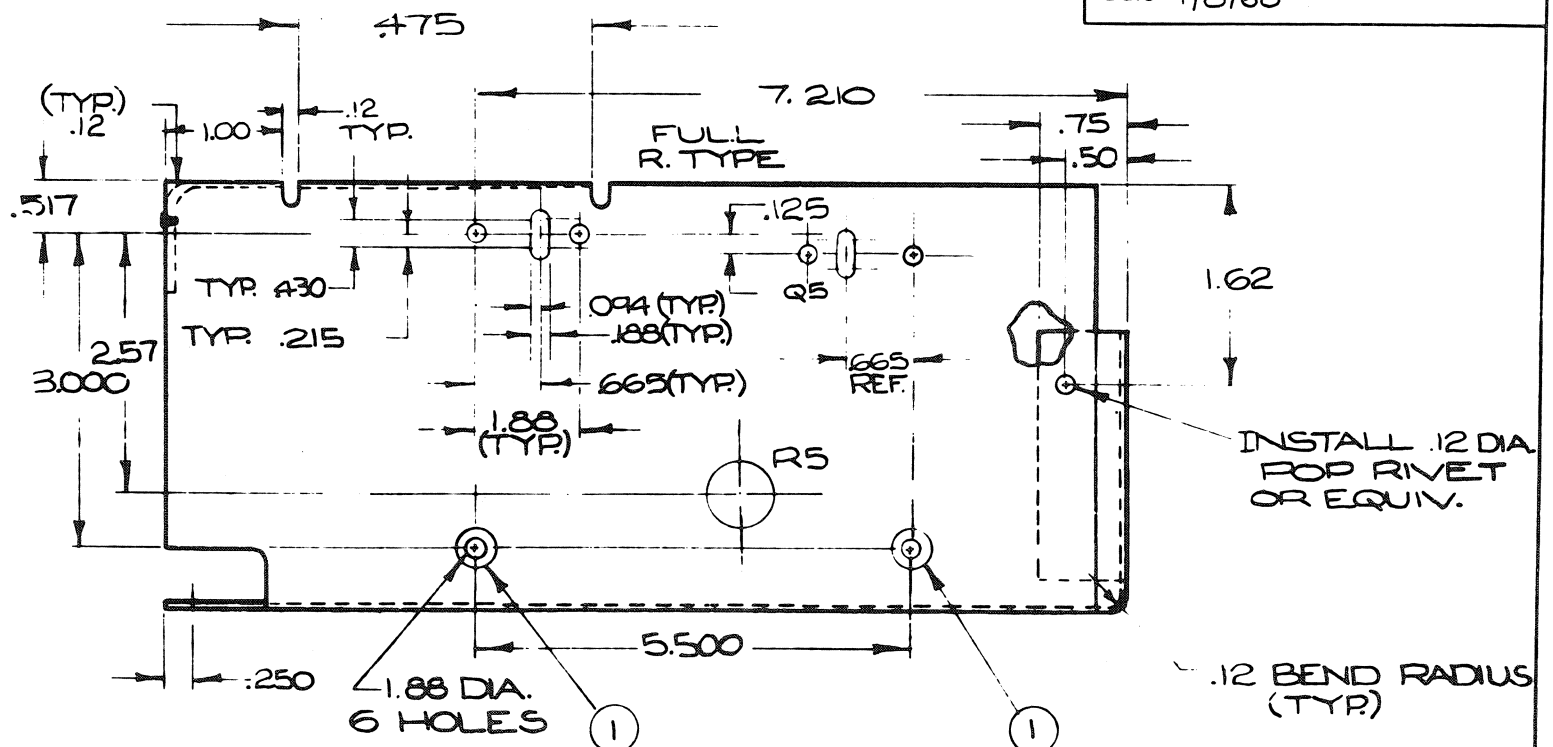


DETAIL A

D.E.C. PART NO.  
30-09282

Sheet 3 of 7	Scale <i>H</i>
Number 30-09282	Rev c

Date 1/8/68



D.E.C. PART NO.  
30-09282

Sheet 4 of 7	Scale <i>H</i>
Number 30-09282	Rev c

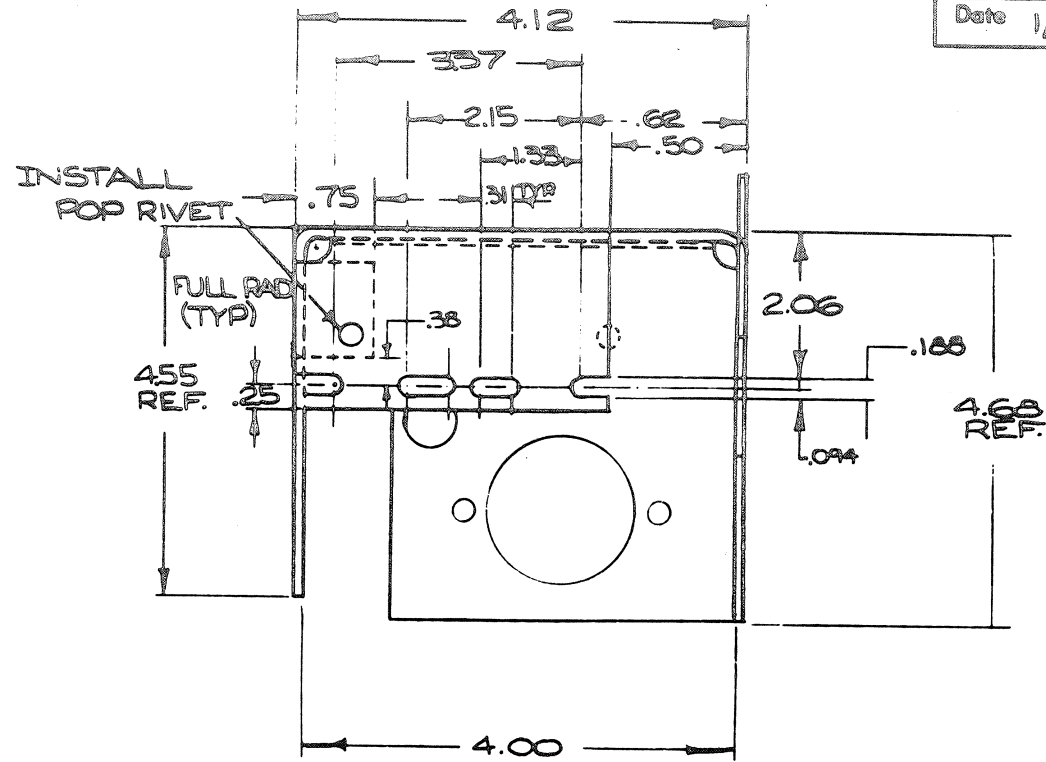


EQUIPMENT  
CORPORATION

## PURCHASE SPECIFICATION

Number 30-09282 Rev c

Date 1/8/69



D.E.C. PART NO.  
30-09282

Sheet 5 of 7	Scale --H--
Number 30-09282	Rev c

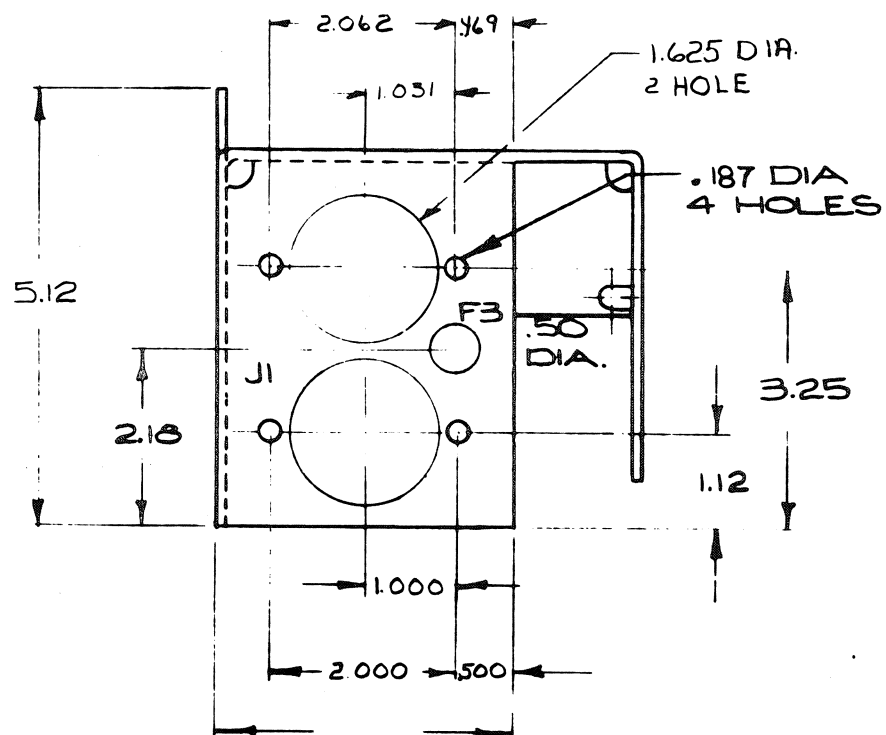


EQUIPMENT  
CORPORATION

## PURCHASE SPECIFICATION

Number 30-09282 Rev c

Date 1/8/69



D.E.C. PART NO.  
30-09282

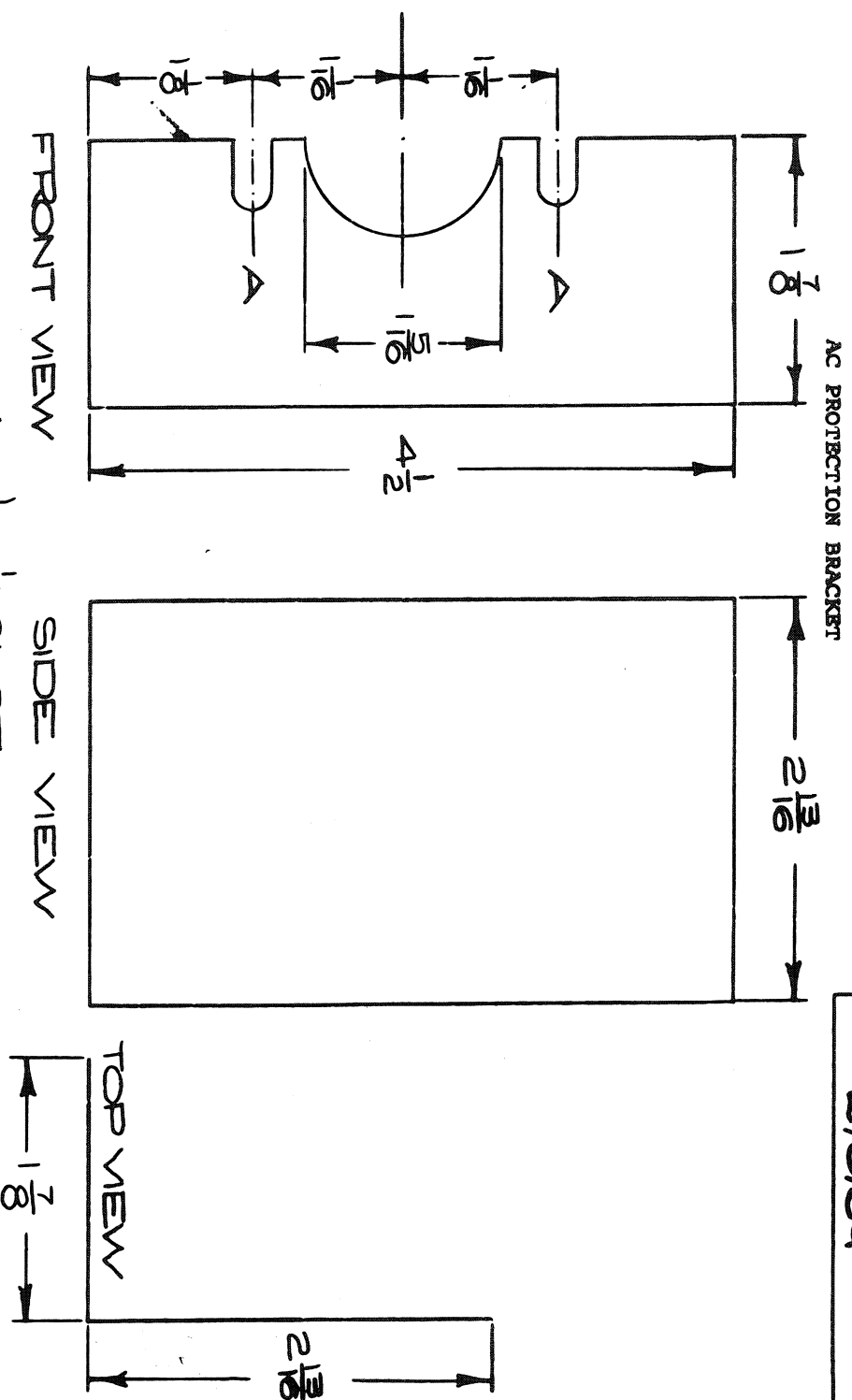
Sheet 6 of 7	Scale --H--
Number 30-09282	Rev c

DISA EQUIPMENT CORPORATION

PURCHASE SPECIFICATION

Number 30-09282 Rev C

Date 2/6/69



FRONT VIEW

SIDE VIEW

TOP VIEW

$A = \frac{1}{4} \times \frac{1}{2}$  SLOT  
MTL =  $\frac{1}{16}$  ALUM.

D.E.C. PART NO. 30-09282

Sheet 7 of 7	Scale FULL
Number	Rev
30-09282	C