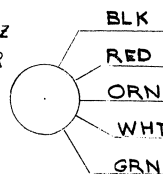


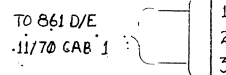
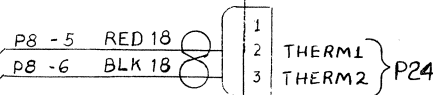
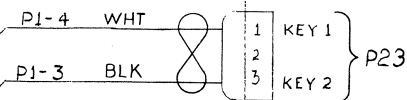
"THIS DRAWING AND SPECIFICATIONS, HEREIN, ARE THE PROPERTY OF DIGITAL EQUIPMENT CORPORATION AND SHALL NOT BE REPRODUCED OR COPIED OR USED IN WHOLE OR IN PART AS THE BASIS FOR THE MANUFACTURE OR SALE OF ITEMS WITHOUT WRITTEN PERMISSION.
COPYRIGHT © 1975, DIGITAL EQUIPMENT CORPORATION"

861 D — 156-230 V/47-63 HZ
(3 PHASE WYE) OR
861 E — 312-460 V/47-63 HZ
(3 PHASE WYE)



861 D/E POWER CONTROL

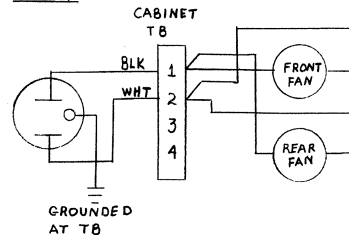
REFER TO CIRCUIT
SCHEMATIC
D-CS-861-D-1 OR
D-CS-861-E-1



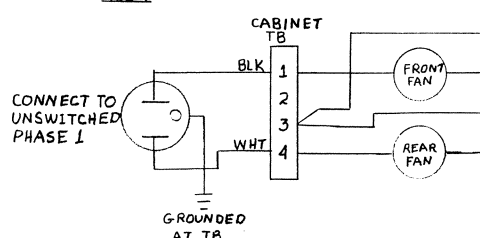
TO SHEET 2

CABINET FAN HOOK UP

208 V

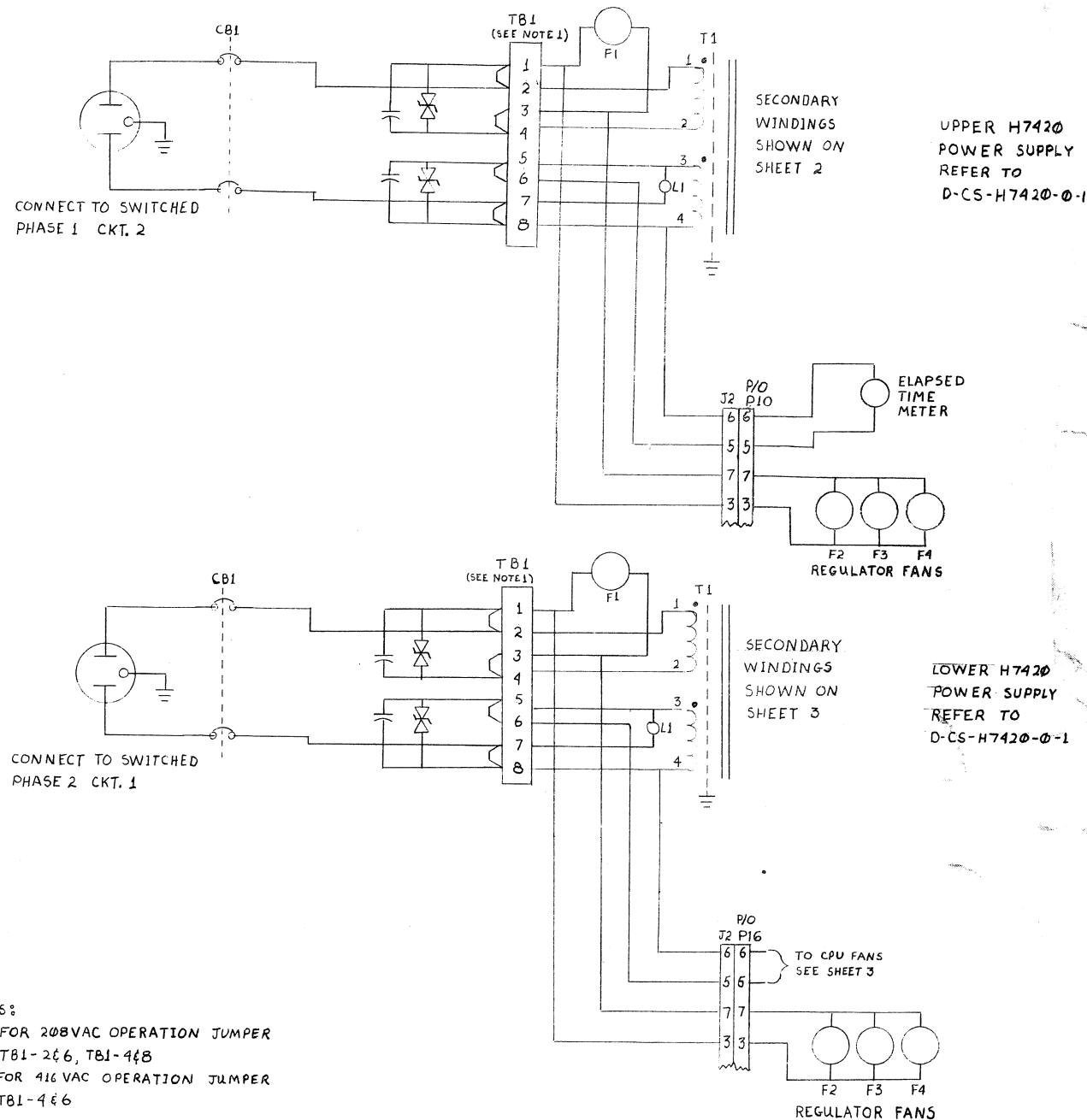


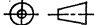
416 V



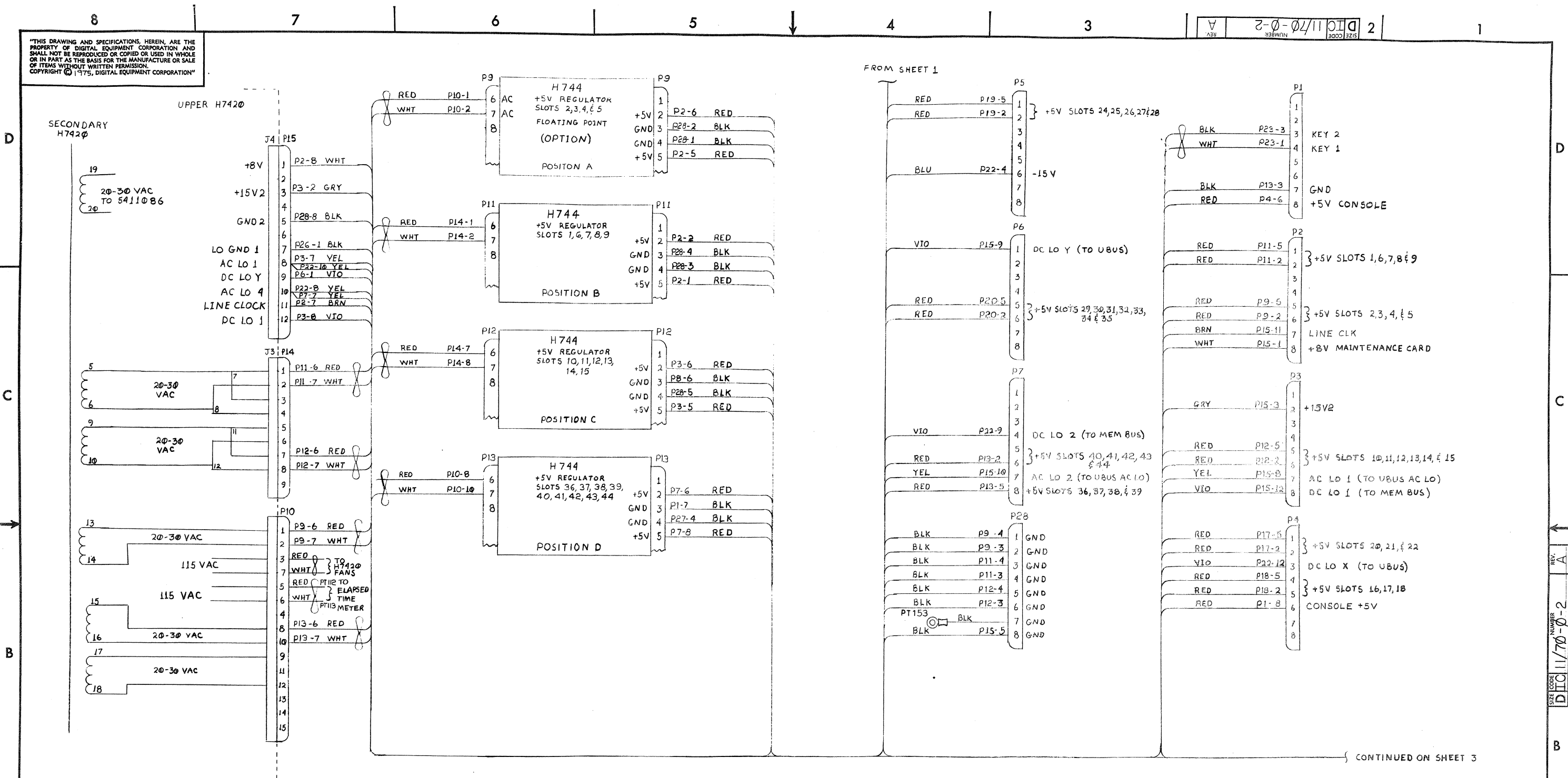
NOTES:

1. FOR 208VAC OPERATION JUMPER
TBI-246, TBI-448
FOR 416 VAC OPERATION JUMPER
TBI-446



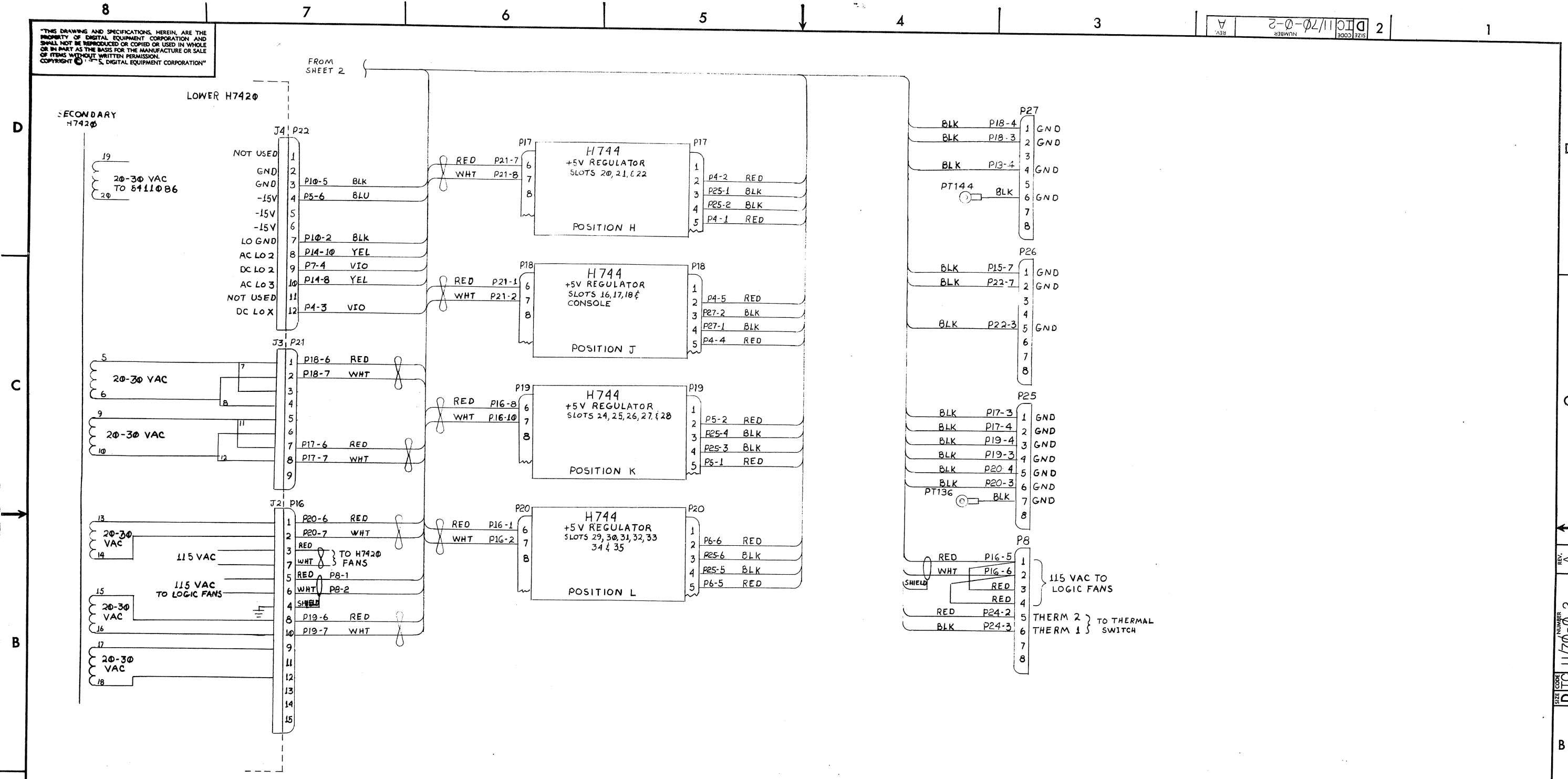
FIRST USED ON OPTION/MODEL			QTY.	DESCRIPTION	PART NO.	ITEM NO.
11/70						
DIMENSIONAL TOLERANCE			PARTS LIST			
DIMENSIONS ARE MILLIMETERS UNLESS OTHERWISE SPECIFIED			DBY. <i>Thomas D. H.</i>	DATE 3/12/75	<div>digital</div>	
			CHK'D <i>W. J. H.</i>	DATE 3/12/75		
			ENG. <i>W. J. H.</i>	DATE 3/12/75		
			PROJ. ENG. <i>Thomas D. H.</i>	DATE 3/12/75		
			PROD. <i>W. J. H.</i>	DATE 3/24/75		
THIRD ANGLE PROJECTION			NEXT HIGHER ASSY.			POWER SYSTEM CONFIGURATION
REMOVE BURRS AND BREAK SHARP CORNERS SURFACE QUALITY ✓						
MATERIAL			B-DD-11/70-0			
FINISH			SCALE 1" = 1"			
			SHEET 1 OF 3			REV. A
			DIST.			

THIS DRAWING AND SPECIFICATIONS, HEREIN, ARE THE PROPERTY OF DIGITAL EQUIPMENT CORPORATION AND SHALL NOT BE REPRODUCED OR COPIED OR USED IN WHOLE OR IN PART AS THE BASIS FOR THE MANUFACTURE OR SALE OF ITEMS WITHOUT WRITTEN PERMISSION.
COPYRIGHT © 1975, DIGITAL EQUIPMENT CORPORATION



FIRST USED ON OPTION/MODEL		QTY.	DESCRIPTION	PART NO.	ITEM NO.
11/70					
DIMENSIONAL TOLERANCE		PARTS LIST			
DIMENSIONS ARE MILLIMETERS		DATE	3/14/75	digital	
INCHES		DATE	3/21/75		
UNLESS OTHERWISE SPECIFIED		DATE	3/21/75		
		DATE	3/21/75		
MILLIMETERS	INCHES	ANGLES	DATE	POWER SYSTEM CONFIGURATION	
XXX ±0.10	.XXX ±.005	30° 30'	DATE		
XX ±0.5	.XX ±.02		DATE		
X ±2	.X ±.1		DATE		
THIRD ANGLE PROJECTION	REMOVE BURRS AND BREAK SHARP CORNERS SURFACE QUALITY	NEXT HIGHER ASSY.	DATE	SIZE CODE NUMBER REV.	
			DATE		
			DATE		
			DATE		
			DATE	D IC 11/70-0-2 A	
			DATE		
			DATE		
			DATE		
			DATE	SHEET 2 OF 3	
			DATE		
			DATE		
			DATE		

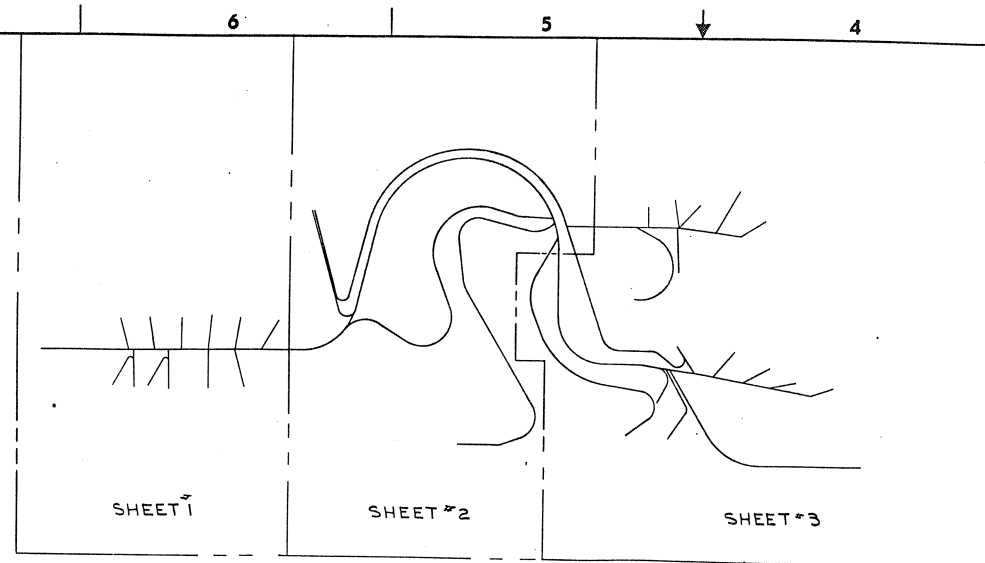
THIS DRAWING AND SPECIFICATIONS, HEREIN, ARE THE PROPERTY OF DIGITAL EQUIPMENT CORPORATION AND SHALL NOT BE REPRODUCED OR COPIED OR USED IN WHOLE OR IN PART AS THE BASIS FOR THE MANUFACTURE OR SALE OF ITEMS WITHOUT WRITTEN PERMISSION. COPYRIGHT © 1970, DIGITAL EQUIPMENT CORPORATION



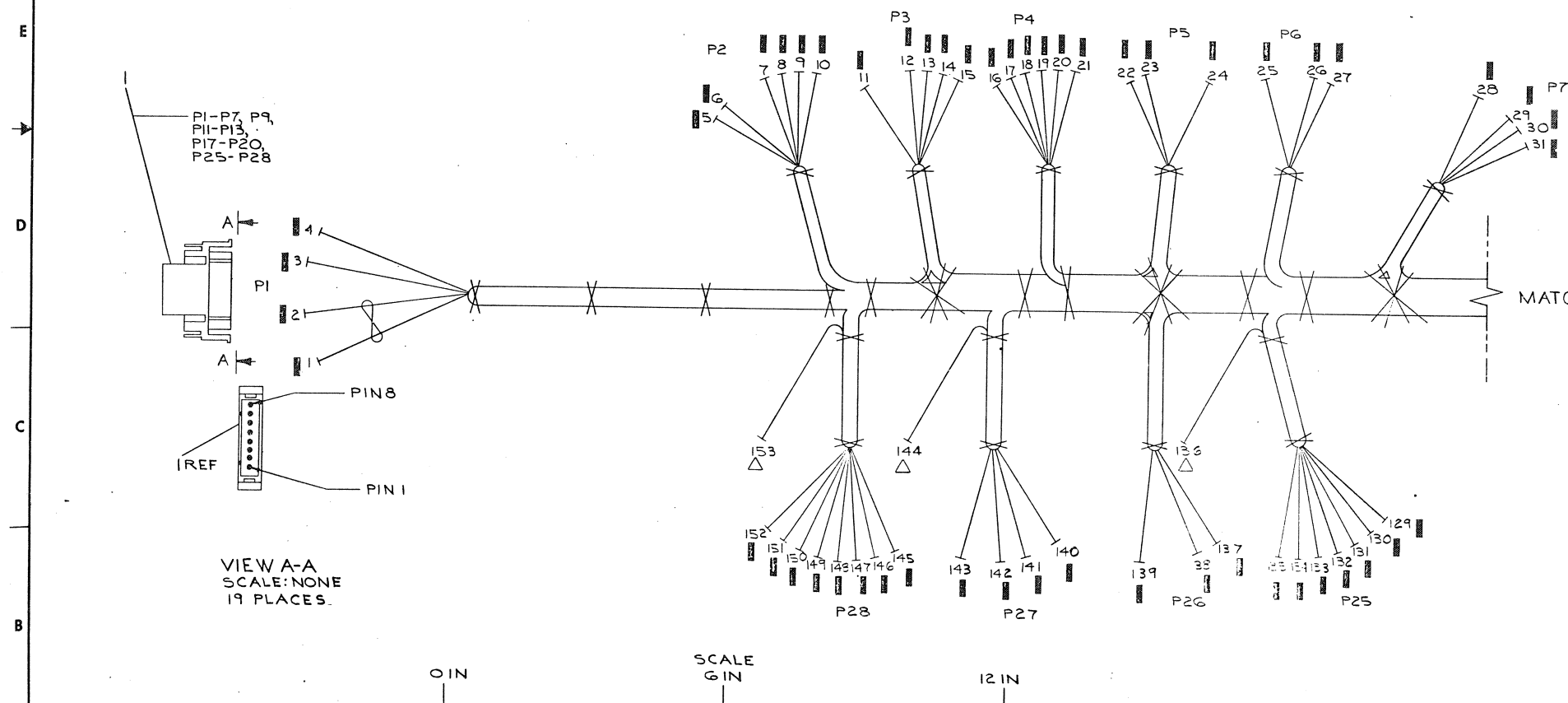
REV.	CHANGE NO.	CHK

FIRST USED ON OPTION/MODEL			QTY.	DESCRIPTION	PART NO.	ITEM NO.
11/70						
DIMENSIONAL TOLERANCE			PARTS LIST			
DIMENSIONS ARE MILLIMETERS UNLESS OTHERWISE SPECIFIED			DATE	DATE	DATE	DATE
MILLIMETERS	INCHES	ANGLES	3/14/75	3/25/75	3/25/75	3/25/75
X,XX = ±0.10	.XXX = ±.005	±0° 30'	PROJ. ENG.	DATE	DATE	DATE
X,X = ±0.5	.XX = ±.02		DATE	DATE	DATE	DATE
X = ±2	.X = ±.1		DATE	DATE	DATE	DATE
THIRD ANGLE PROJECTION	REMOVE BURRS AND BREAK SHARP CORNERS SURFACE QUALITY		NEXT HIGHER ASSY.			
	MATERIAL		B-DD-11/70-0	SCALE	3 OF 3	
	FINISH					
			SIZE CODE	NUMBER	REV.	
			D IC	11/70-0-2	A	
			DIST.			

THIS DRAWING AND SPECIFICATIONS HEREIN ARE THE PROPERTY OF DIGITAL EQUIPMENT CORPORATION AND SHALL NOT BE REPRODUCED OR COPIED OR USED IN WHOLE OR IN PART AS THE BASIS FOR THE MANUFACTURE OR SALE OF ITEMS WITHOUT WRITTEN PERMISSION OF DIGITAL EQUIPMENT CORPORATION.



- NOTES:
- 1) USE TIE WRAPS (X) ITEM #10 APPROX. EVERY THREE (3) INCHES WHEN NECESSARY, AND AT EVERY BREAKOUT POINT.
 - 2) COMPONENTS TO BE LABELED WITH COMPONENT IDENTIFIER, USING BRADY MARKERS, OR DECALS 7409872-0-0.
 - 3) FOR POINT TO POINT WIRING REFERTO-DWL-7011051-0-1
 - 4) IN AREA INDICATED ENCLOSE MAIN HARNESS WITH ZIPPER TUBING, (ITEM #25). ZIPPER MUST BE ROUTED ALONG THE OUTSIDE CURVE OF BUNDLE. INSURE THAT EXCESS TUBING IS TUCKED IN AT END.
 - 5) TWIST TOGETHER:
 - P22-7 BLK #18 AWG.
 - P22-8 YEL #18 AWG.
 - P22-9 VIO #18 AWG.
 - P22-10 YEL #18 AWG.
 - P22-12 VIO #18 AWG.
 - P15-7 BLK #18 AWG.
 - P15-8 YEL #18 AWG.
 - P15-10 YEL #18 AWG.
 - P15-11 BRN #18 AWG.
 - P15-12 VIO #18 AWG.



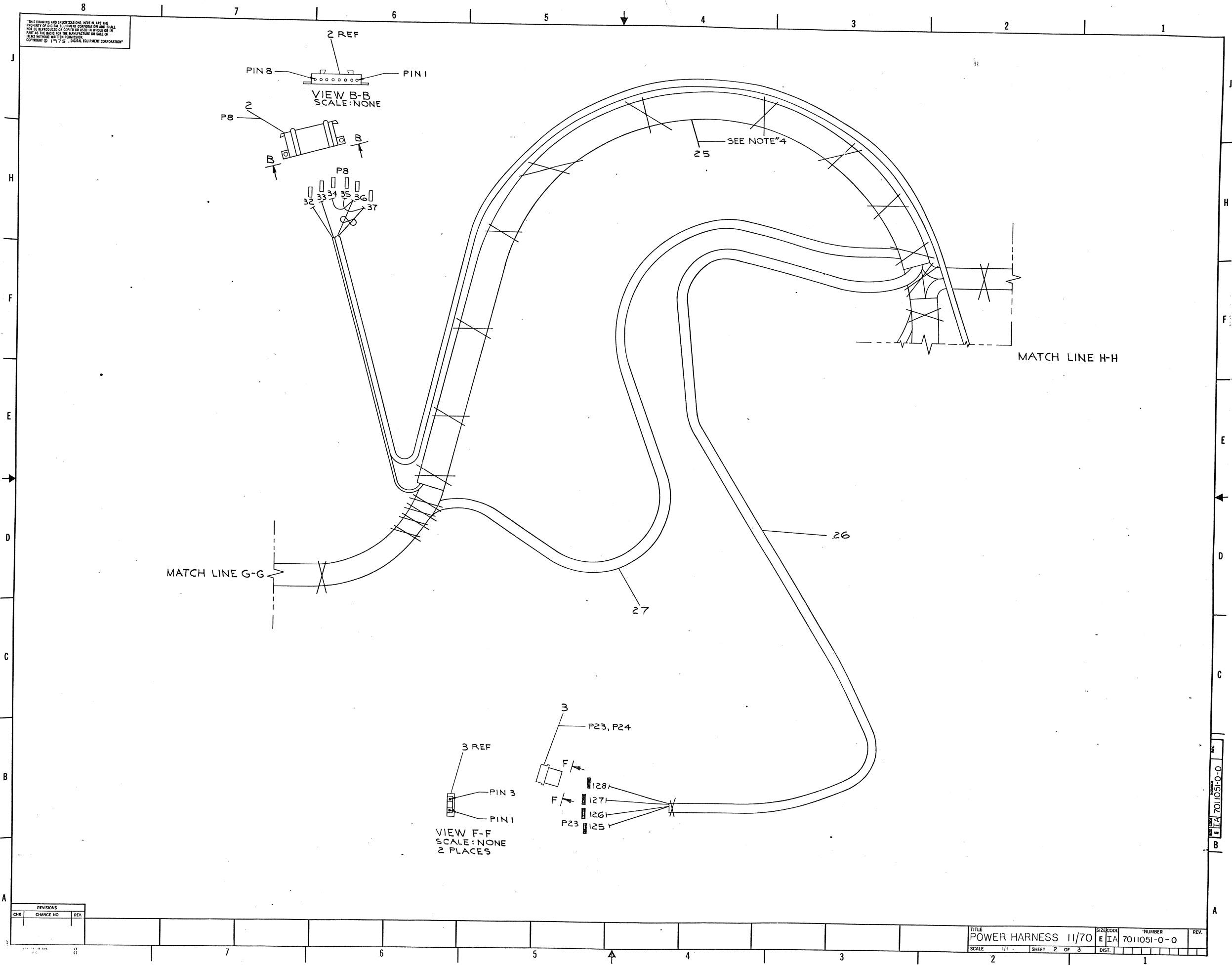
MATCH LINE G-G

DO NOT REDUCE
FOR MANUFACTURING PURPOSES ONLY

9.25	WIRE, #18 AWG. BLK/REDTWP	9107430-02	29
9.25	WIRE, #18 AWG. BLK/WHT TWP	9107430-09	28
A/R	TUBING, BLK .38IN	9107245-00	27
A/R	TUBING, BLK	9107243	26
A/R	TUBING, ZIPPER	9107679	25
A/R	TUBING #14 AWG. BLK	9107295-00	24
5.6	CABLE, 2 COND. SHIELD	9107761	23
13.3	WIRE, #18 AWG. RED	9107360-22	22
25	WIRE, #18 AWG. WHT	9107360-99	21
18.4	WIRE, #18 AWG. BLK	9107360-00	20
6.1	WIRE, #18 AWG. BRN	9107360-11	19
21.5	WIRE, #18 AWG. VIO	9107360-77	18
18.4	WIRE, #18 AWG. YEL	9107360-44	17
15.4	WIRE, #14 AWG. RED/WHT TWP	9107440-29	16
6	WIRE, #14 AWG. WHT	9107370-99	15
13.6	WIRE, #14 AWG. RED	9107370-22	14
8.3	WIRE, #14 AWG. BLU	9107370-66	13
5	WIRE, #14 AWG. GRAY	9107370-88	12
11.7	WIRE, #14 AWG. BLK	9107370-00	11
Y	TIE WRAP	9007032	10
Δ	CONN. SOLDERLESS	9007928-00	9
□	SOCKET, FEMALE	1209379-00	8
142	PIN, MALE	1209378-00	7
2	CONN. 9 PIN	1209351-09	6
2	CONN. 12 PIN	1209351-12	5
2	CONN. 15 PIN	1209351-15	4
2	CONN. 3 PIN	1209351-03	3
1	HOUSING 8 PIN	1209340-00	2
19	CONN. 8 PIN	1209340-01	1

QUANTITY	DESCRIPTION	DWG PART NO.	ITEM NO.
UNLESS OTHERWISE SPECIFIED DIMENSIONS ARE IN INCHES			
ANGLES	CLASS OF	ACCURACY	OF VERTICAL DIMENSIONS RANGE INCHES
SURFACE	CHECK ONLY	FINISH	FINISH
QUANTITY & VARIATION	MEDIUM	PREFERRED	FINISH
THIRD ANGLE PROJECTION	DRN	FIRST USED ON	11/70
REMOVE BURS AND BREAK SHARP CORNERS	CHKD. 7/70	TITLE	POWER HARNESS
DO NOT SCALE DIMS	PROJ. ENG. 11/70	DATE	11/70
MATERIAL	SEE PARTS LIST	SIZE	1/1
FINISH	SCALE	NUMBER	7011051-0-0
	SHEET	DIST	

THIS DRAWING AND SPECIFICATIONS HEREIN ARE THE PROPERTY OF DIGITAL EQUIPMENT CORPORATION AND SHALL NOT BE REPRODUCED OR COPIED OR USED IN WHOLE OR IN PART AS THE BASIS FOR THE MANUFACTURE OR SALE OF ITEMS WITHOUT WRITTEN PERMISSION OF DIGITAL EQUIPMENT CORPORATION

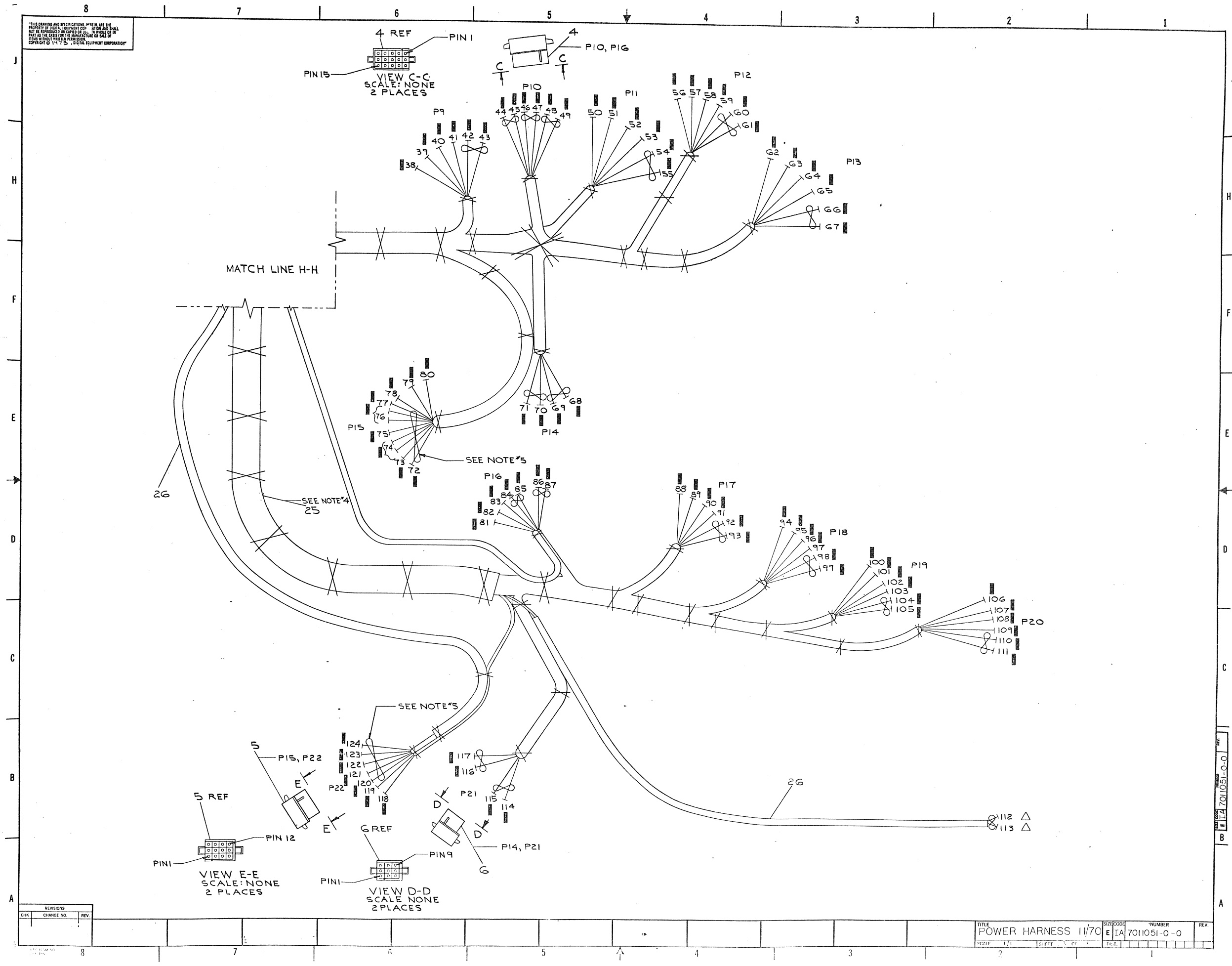


REVISIONS		
CHK	CHANGE NO.	REV.

TITLE		POWER HARNESS 11/70	SIZE CODE	EIA	NUMBER	7011051-0-0	REV.	
SCALE		1/1	SHEET		2 OF 3	DIST.		

7011051-0-0

THIS DRAWING AND SPECIFICATIONS, WHEN AND THE PROPERTY OF ELECTRONIC EQUIPMENT CO. SHALL NOT BE REPRODUCED OR COPIED OR IN WHOLE OR IN PART AS THE BASIS FOR THE MANUFACTURE OF EQUIPMENT WITHOUT WRITTEN PERMISSION. COPYRIGHT © 1964 E. E. EQUIPMENT CORPORATION



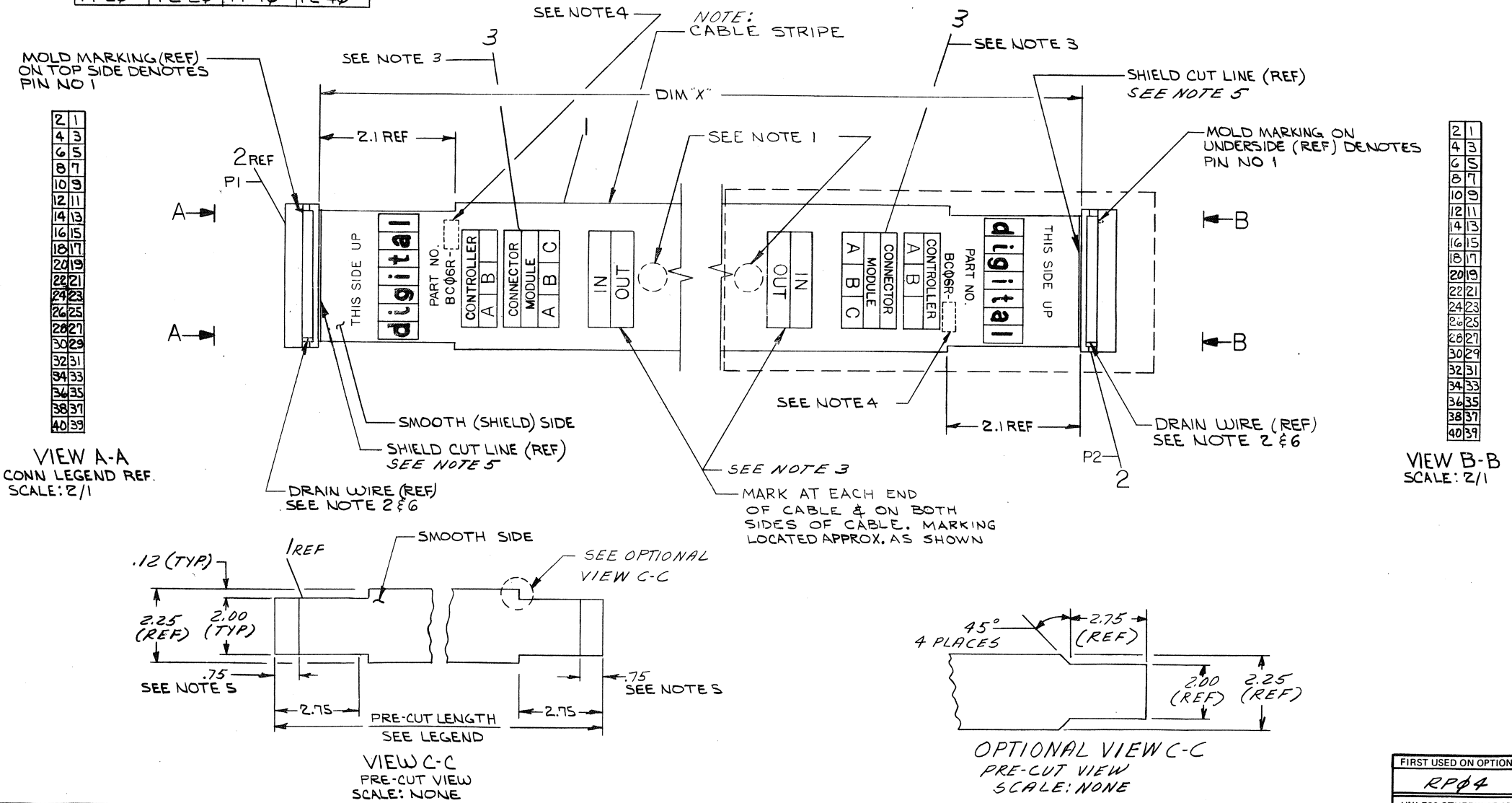
REVISIONS		
CHK	CHANGE NO.	REV.

TITLE		SIZE	CODE	NUMBER	REV.
POWER HARNESS 11/70		E	IA	7011051-0-0	
SCALE		1/1	1/1	1/1	1/1

WIRE TABLE			
FROM	TO	FROM	TO
P1-1	P2-1	P1-21	P2-21
P1-2	P2-2	P1-22	P2-22
P1-3	P2-3	P1-23	P2-23
P1-4	P2-4	P1-24	P2-24
P1-5	P2-5	P1-25	P2-25
P1-6	P2-6	P1-26	P2-26
P1-7	P2-7	P1-27	P2-27
P1-8	P2-8	P1-28	P2-28
P1-9	P2-9	P1-29	P2-29
P1-10	P2-10	P1-30	P2-30
P1-11	P2-11	P1-31	P2-31
P1-12	P2-12	P1-32	P2-32
P1-13	P2-13	P1-33	P2-33
P1-14	P2-14	P1-34	P2-34
P1-15	P2-15	P1-35	P2-35
P1-16	P2-16	P1-36	P2-36
P1-17	P2-17	P1-37	P2-37
P1-18	P2-18	P1-38	P2-38
P1-19	P2-19	P1-39	P2-39
P1-20	P2-20	P1-40	P2-40

LEGEND			
NUMBER	DIM "X"	PRECUT LENGTH	REMARKS
BC06R-01	1 FT	1 FT 1.5 IN ± 1 IN	SEE PRE-CUT VIEW C-C
BC06R-02	2 FT	2 FT 1.5 IN ± 1 IN	
BC06R-03	3 FT	3 FT 1.5 IN ± 1 IN	
BC06R-04	4 FT	4 FT 1.5 IN ± 1 IN	
BC06R-05	4 FT 6 IN	4 FT 7.5 IN ± 1.5 IN	
BC06R-06	6 FT	6 FT 1.5 IN ± 2 IN	
BC06R-08	8 FT	8 FT 1.5 IN ± 2 IN	
BC06R-10	10 FT	10 FT 1.5 IN ± 2 IN	
BC06R-12	12 FT	12 FT 1.5 IN ± 3 IN	
BC06R-20	20 FT	20 FT 1.5 IN ± 3 IN	
BC06R-25	25 FT	25 FT 1.5 IN ± 3 IN	
BC06R-30	30 FT	30 FT 1.5 IN ± 6 IN	
BC06R-50	50 FT	50 FT 1.5 IN ± 10 FT	
BC06R-60	60 FT	60 FT 1.5 IN ± 12 FT	
BC06R-75	75 FT	75 FT 1.5 IN ± 1.5 FT	
BC06R-A0	100 FT	100 FT 1.5 IN ± 2 FT	
BC06R-07	7 FT	7 FT 1.5 IN ± 2 IN	SEE PRE-CUT VIEW C-C

- NOTES:
1. INSPECTION & TEST STAMPS TO BE PLACED AT EACH END OF THE CABLE ASSEMBLY.
 2. DRAIN WIRE CONNECTS TO PIN NO 40.
 3. RUBBER STAMP INFORMATION SHOWN USING INK (ITEM 3) & ART WORK DEC NO. A-DC-7411699-0-0
 4. STAMP APPLICABLE OPTION DASH NO. ACCORDING TO LENGTH.
 5. REMOVE SHIELD .75 FROM END OF PRECUT CABLE (SEE VIEW C-C).
 6. COVER EXPOSED DRAIN WIRE WITH ITEM 4 PRIOR TO ASSY (BOTH ENDS).



A/R	PLASTIC TAPE	3612511-0	4
A/R	INK	4901150	3
Z	CONNECTOR, 40 SOCKET	1211206	2
A/R	CABLE, 40 COND FLAT W/SHIELD	17-00034	1

FIRST USED ON OPTION/MODEL		QTY.		DESCRIPTION		PART NO.		ITEM NO.	
RP04									
UNLESS OTHERWISE SPECIFIED DIMENSION IN INCHES:		TOLERANCES		DECIMALS		ANGLES		REMOVE BURRS AND BREAK SHARP CORNERS SURFACE QUALITY	
.XXX = .005		.XX = .02		.X = .1		± 0° 30'		✓	
MATERIAL		SEE PARTS LIST		FINISH		NEXT HIGHER ASSY.		E-TA-7009807-0-0	
								E-TA-7009808-0-0	
								SCALE NONE	
								SHEET 1 OF 1	

DIGITAL EQUIPMENT CORPORATION
MAYNARD, MASSACHUSETTS

MADE BY	Ken Duggan
DATE	3/14/75

DATE	3/17/75
------	---------

SECTION

ENG Thomas A. Northrup
DATE 3/26/75

PROD	Don Weaver
DATE	3/24/75

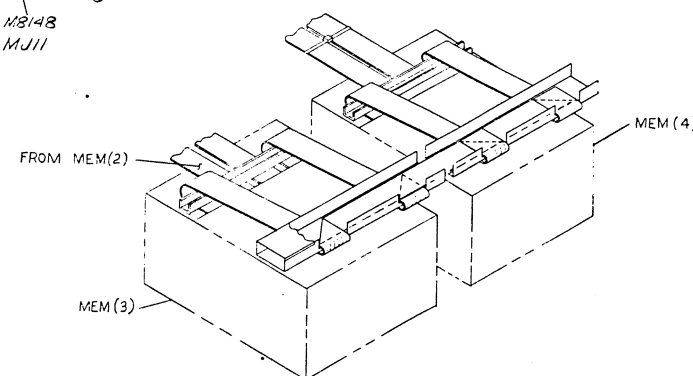
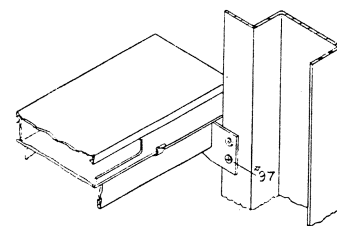
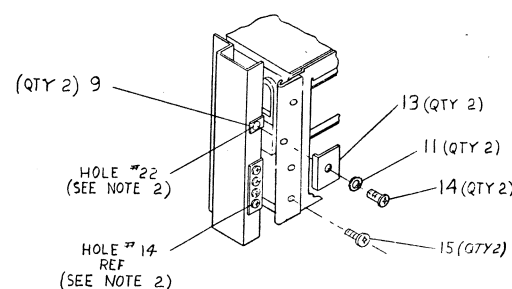
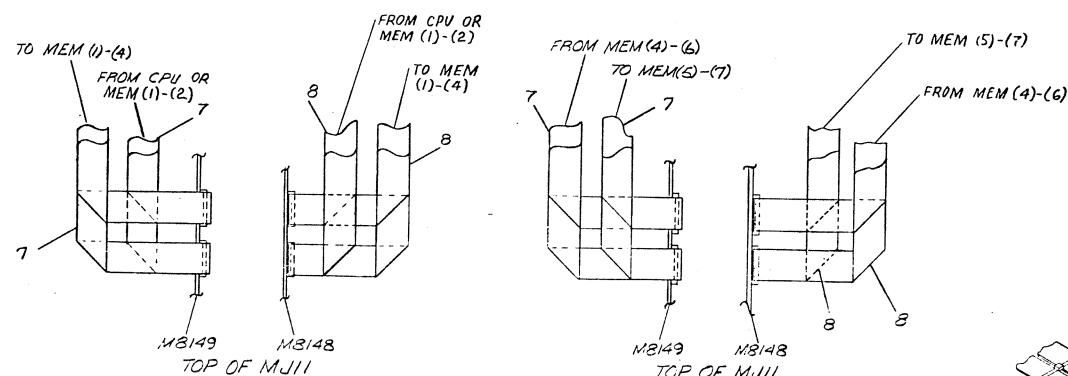
ISSUED SECT.

ITEM NO.	DWG NO. / PART NO.	DESCRIPTION																		
	ZR-002-RD	Basic Diagnostic Kit for 9 trk magtape	*																	
	ZR-002-RE	Basic Diagnostic for RK05 Cartridge	*																	
	EK-1170-MM-001	11/70 Systems and Maintenance Manual	1																	
	EB-04526-75	11 Peripherals and interfacing handbook	1																	
	EB-04588-75	11/70 Processor Handbook	1																	
	EK-KB11B-TM	KB11 Maintenance Manual	1																	
	MP-11/70	Customer Print Set	1																	
	ED-04738-75	Dec Supplies List	1																	
	EK-MJ11-MM-001	Maintenance Manual MJ11	1																	
	12012392-01	H960C Cab Filter	1																	
	9007221	AGC 5A Fuse	5																	
	9007226	AGC 15A Fuse	5																	
	12010754	Key on/off switch	2																	
	1212392-01	MJ11 Cabinet Door Filter	4																	
	EH-03396-73	PDP-11 Instruction Card	1																	
	EJ-01235-74	Daily Log	1																	
	EK-861AB-MM-002	861-D/E POWER SUPPLY MANUAL	1																	
	EN-01862-03	Q.C. CHECK LIST	REF																	
	* Shipment of Diagnostic Kit is conditional upon the type of Media on the system																			
TITLE Central Processor			ASSY NO. B-DD-11/70-0			SIZE A		CODE PL		NUMBER 11/70-0-3				REV. A		ECO NO 11/70-00002				
			SHEET 1 OF 1			DIST.														

DEC FORM DEC 16-(325)-1031-N870
DRA 110

NOTES:

1. SYSTEM EXPANSION WILL FOLLOW THESE RULES. (A) ALL TUBE OPTION WILL TAKE POSITIONS TO THE RIGHT OF 1170 MEM. UNIBUS INTERFACE WILL BE LEFT OF CPU 2 CAB MAX. FOLLOWED BY RS04, RS03 AND LIKE OPTIONS.
2. SHIPPING BRKT TO BE USED IN THE FOLLOWING HOLE LOCATIONS IF APPLICABLE
IF BOTTOM HOLE OF ARM SLIDE IS "14" BRKT #12 WILL BE MTD IN HOLE = 22
IF #35 HOLE, BRKT MTD IN HOLE = 43
IF #43 HOLE, BRKT MTD IN HOLE = 56
IF #77 HOLE, BRKT MTD IN HOLE = 85.
3. ADDITIONAL CABLE TROUGH ASSY #T01027 SUPPLIED WITH MJ11-AC OR AD ASSY TO BE ATTACHED TO CAB 1 PER DETAIL 'B'.
4. FOR CABLE ROUTING IN CABLE TROUGHS BETWEEN CAB 1 & MJ11-AC OR AD SEE DETAIL 'C'.
5. INSTALL (861-D HARNESS) SUPPLIED WITH MJ11. FROM 3 PIN CONN, LOCATED ON 861-D OR E (FRONT) TO MJ11-AC 3 PIN CONN, LOCATED ON 861-D OR E (FRONT) OF CAB 1.
6. JUMPER ASSY SUPPLIED WITH MJ11 TO BE GROUND TO GROUND STUD ON CAB 1 USING PART SUPPLIED.



REF	Q.O. CHECK LIST	EN-01862-C3	16
FOR	SCR. PHL. TRUSS HD		
	0383.531G 252K 5YDE	9009715	15
APR	SCR. PHL HD TRUSS *10-2X10	9006077.3	14
APR	BRTK. LOCKING	8-0M0749364-0	10
APR	CABLE PETH. LOG	4-F5-12/1275-50	12
APR	WASH-HA LOCK 10	3007651	11
APR	SCR. PHL HD TRUSS 10	9006075-3	10
APR	SPEED HUT *0-28	9007184	9
APR	CABLE INTR. CON. 10	4-A1070181-10	8
APR	CABLE INTR. CON. 10	4-A1070181-0	7
APR	UNIT ASSY. 10	E-1A-1110-5	6
APR	UNIT ASSY. 10	E-1A-1110-AC-0	5
APR	UNIT ASSY. 10	E-1A-1110-10	4
APR	UNIT ASSY. 10	E-1A-1110-10	3
APR	UNIT ASSY. 10	E-1A-1110-0	2
REF	UNIT ASSY. L-33	E-1A-1110-33	1

DRAWING NO. 0174-1		REV. 0174-2		ITEM NO. 7	
DESCRIPTION UNLESS OTHERWISE SPECIFIED DIMENSIONS ARE IN INCHES					
ANGLES 1/16" 30		CLASS OF ACCURACY (INCHES) ONE		NOMINAL DIMENSION RANGE INCHES	
SURFACE QUALITY IN		FINISH		TOLERANCES	
MEDIUM		MEDIUM		FRACTIONAL DECIMAL	
MICROFINISH		PREFERRED		FRACTIONAL DECIMAL	
QUANTITY & VARIATION		PREFERRED		FRACTIONAL DECIMAL	
PROJECTION		FIRST-ANGLE PROJECTION		DIGITAL	
ENG. DRG. & DIM. DRG.		TITLE		A	
DIM. DRG. & DIM. DRG.		1/70 SYSTEM		EXPANSION	
NEXT HIGHER ASSY		SIZE		REV.	
SCALE		E AR		NUMBER	
FILED		DIST		B	

This drawing and specifications, herein, are the property of Digital Equipment Corporation and shall not be reproduced or copied or used in whole or in part as the basis for the manufacture or sale of items without written permission.

COPYRIGHT 1975 DIGITAL
EQUIPMENT CORPORATION

D

C

B

A

ITEM NO.	DRAWING NO./PART NO.	DESCRIPTION
	A-PL-KB11-B-Ø	16 BIT PROCESSOR
	D-CS-M93Ø1-YC-1	TERMINATOR BOOT STRAP
	B-DD-KW11-L-Ø	LINE TIME CLOCK INTERFACE
	D-UA-DL11-C-Ø	ASYNCHRONOUS LINE INTERFACE
	E-UA-MJ11-AY-Ø	32K 18 BIT MEM. 115V 50/60 HZ
	E-UA-MJ11-AZ-Ø	32K 18 BIT MEM. 230V 50/60 HZ
	E-UA-LA36-CA-Ø	DECWRITER 115V
	E-UA-MJ11-AE-Ø	32K 18 BIT EXPANSION 115V 50/60 HZ
	E-UA-LA36-CB-Ø	DECWRITER 230V
	E-UA-BALL1-KE-Ø	10.5 EXPANDER BOX 115V
	D-UA-RK11-DE-Ø	DISK CONTROL 115V 60 HZ
	D-UA-RKØ5-AA-Ø	25 BIT DEC DISK PACK 115V 60 HZ
	E-UA-BALL1-KF-Ø	10.5 EXPANDER BOX 230V
	D-UA-RK11-DF-Ø	DISK CONTROL 230V 60 HZ
	D-UA-RKØ5-AB-Ø	25 BIT DEC DISK PACK 230V 60 HZ
	D-UA-RK11-DH-Ø	DISK CONTROL 115V 50 HZ
	D-UA-RKØ5-BA-Ø	25 BIT DEC DISK PACK 115V 50 HZ
	D-UA-RK11-DJ-Ø	DISK CONTROL 230V 50 HZ
	D-UA-RKØ5-BB-Ø	DISK CONTROL 230V 50 HZ
	E-UA-RWPØ4-AA-Ø	MOVING HEAD DISK 60 HZ
	E-UA-TWU16-EA-Ø	MAG TAPE DRIVE 115V 60 HZ
	E-UA-TWU16-EB-Ø	MAG TAPE DRIVE 230V 60 HZ
	E-UA-RWPØ4-AB-Ø	MOVING HEAD DISK 50 HZ
	E-UA-TWU16-EC-Ø	MAG TAPE DRIVE 115V 50 HZ
	E-UA-TWU16-ED-Ø	MAG TAPE DRIVE 230V 50 HZ
	E-UA-RWPØ4-BA-Ø	MOVING HEAD DISK 60 HZ
	E-UA-RWPØ4-BB-Ø	MOVING HEAD DISK 50 HZ
	E-UA-RWPØ4-CA-Ø	MOVING HEAD DISK 60 HZ
	E-UA-RWPØ4-CB-Ø	MOVING HEAD DISK 50 HZ
	A-PL-RWSØ4-BA-Ø	FIXED HEAD DISK SYSTEM 115V 60 HZ
	A-PL-RWSØ4-BB-Ø	FIXED HEAD DISK SYSTEM 230V 60 HZ
	A-PL-RWSØ4-BC-Ø	FIXED HEAD DISK SYSTEM 115V 50 HZ
	A-PL-RWSØ4-BD-Ø	FIXED HEAD DISK SYSTEM 230V 50 HZ

REV.	CHANGE NO.	CHK

DEC FORM NO.
DRC 110

FIRST USED ON OPTION/MODEL
D-UA-11/70-0-0

UNLESS OTHERWISE SPECIFIED
DIMENSION IN INCHES
TOLERANCES
DECIMALS FRACTIONS ANGLES
± .005 ± 1/64 ± 0°30'
FINAL SURFACE QUALITY
REMOVE BURRS AND BREAK SHARP CORNERS
MATERIAL
FINISH

DRN.
D. HEALY
CHK'D.
D. HEALY
ENG.
DATE 4/7/75
DATE 4/7/75
DATE 4/16/75
DATE 4/16/75
NEXT HIGHER ASSY.
NONE
SCALE
SHEET 1 OF 1

digital EQUIPMENT CORPORATION
MAYNARD, MASSACHUSETTS
TITLE
SYSTEM EXPANSION OPTION LIST
(11/70)
SIZE CODE
C PL
NUMBER
11/70-0-4
REV.

REV.
NUMBER
11/70-0-4
SIZE CODE
C PL
B

COPYRIGHT 1975 DIGITAL
EQUIPMENT CORPORATION

DEC FORM NO.
DRC 110

1