
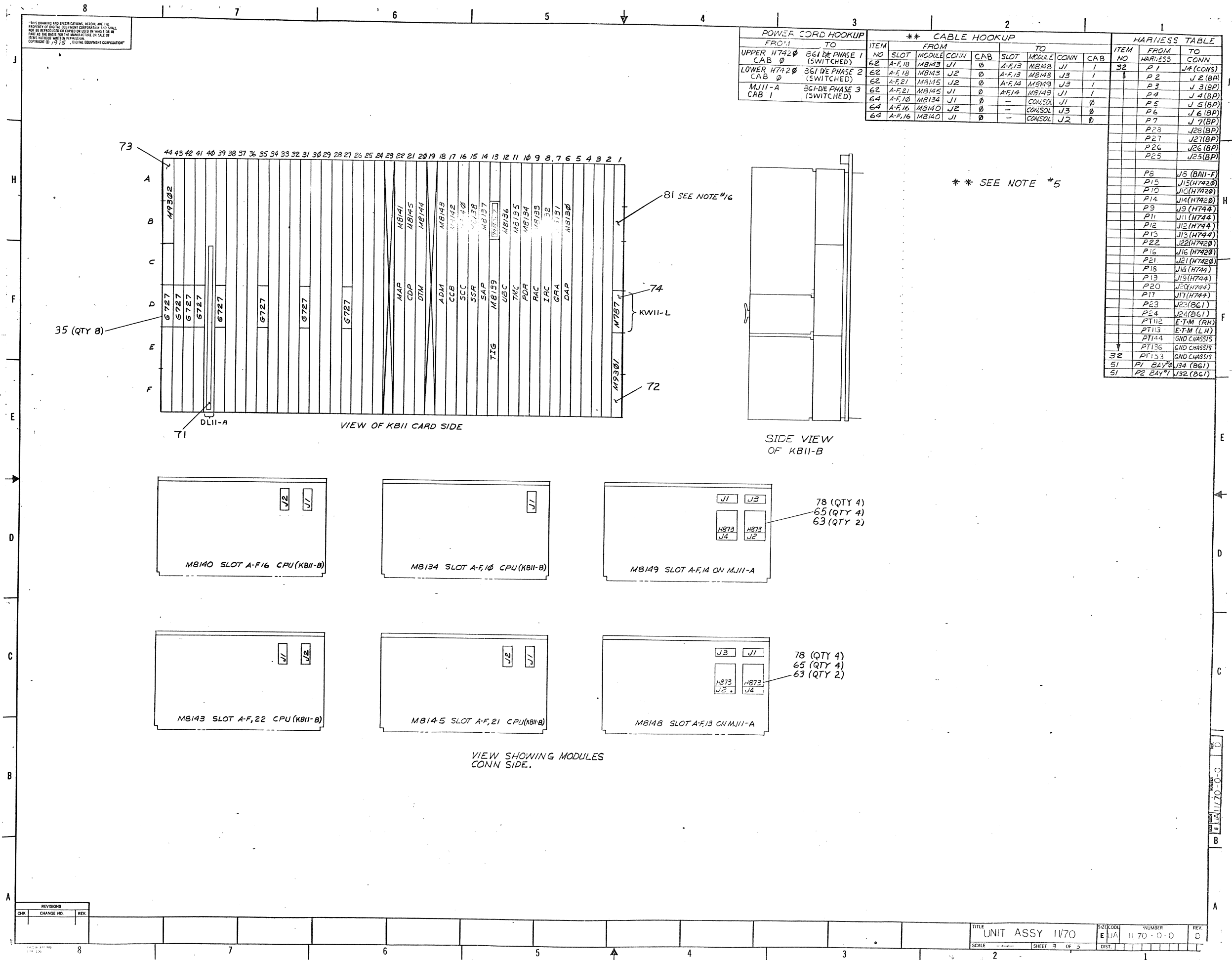


| FIRST USED ON OPTION/MODEL <i>11/70</i> | | | | QTY. | DESCRIPTION | PART NO. | ITEM NO. | | | | | | | | | | | | | | | | | | | | |
|--|-------------------|---------|--|--|-------------|----------|----------------|----------------|---------|---------------|---------------|---------------|--------------|--|--|--|--|------|------|---------------------|-------------------|-------------------|-------------------|--------------------|-------------------|--------------------|-------------------|
| DIMENSIONAL TOLERANCE | | | | PARTS LIST | | | | | | | | | | | | | | | | | | | | | | | |
| DIMENSIONS ARE <u>MILLIMETERS</u> UNLESS OTHERWISE SPECIFIED | | | | <div style="border: 1px solid black; padding: 5px; display: inline-block;"> digital </div> | | | | | | | | | | | | | | | | | | | | | | | |
| <table border="1"> <thead> <tr> <th>MILLIMETERS</th> <th>INCHES</th> <th>ANGLES</th> </tr> </thead> <tbody> <tr> <td>XXX ± 0.10</td> <td>XXX $\pm .005$</td> <td rowspan="3">10° 30°</td> </tr> <tr> <td>XXX ± 0.5</td> <td>XXX $\pm .02$</td> </tr> <tr> <td>XXX ± 1.0</td> <td>XXX $\pm .1$</td> </tr> </tbody> </table> | | | | MILLIMETERS | INCHES | ANGLES | XXX ± 0.10 | XXX $\pm .005$ | 10° 30° | XXX ± 0.5 | XXX $\pm .02$ | XXX ± 1.0 | XXX $\pm .1$ | <table border="1"> <thead> <tr> <th>DATE</th> <th>DATE</th> </tr> </thead> <tbody> <tr> <td>CHK'D. <i>11/70</i></td> <td>DATE <i>11/70</i></td> </tr> <tr> <td>ENG. <i>11/70</i></td> <td>DATE <i>11/70</i></td> </tr> <tr> <td>PROG. <i>11/70</i></td> <td>DATE <i>11/70</i></td> </tr> <tr> <td>PROG. <i>11/70</i></td> <td>DATE <i>11/70</i></td> </tr> </tbody> </table> | | | | DATE | DATE | CHK'D. <i>11/70</i> | DATE <i>11/70</i> | ENG. <i>11/70</i> | DATE <i>11/70</i> | PROG. <i>11/70</i> | DATE <i>11/70</i> | PROG. <i>11/70</i> | DATE <i>11/70</i> |
| MILLIMETERS | INCHES | ANGLES | | | | | | | | | | | | | | | | | | | | | | | | | |
| XXX ± 0.10 | XXX $\pm .005$ | 10° 30° | | | | | | | | | | | | | | | | | | | | | | | | | |
| XXX ± 0.5 | XXX $\pm .02$ | | | | | | | | | | | | | | | | | | | | | | | | | | |
| XXX ± 1.0 | XXX $\pm .1$ | | | | | | | | | | | | | | | | | | | | | | | | | | |
| DATE | DATE | | | | | | | | | | | | | | | | | | | | | | | | | | |
| CHK'D. <i>11/70</i> | DATE <i>11/70</i> | | | | | | | | | | | | | | | | | | | | | | | | | | |
| ENG. <i>11/70</i> | DATE <i>11/70</i> | | | | | | | | | | | | | | | | | | | | | | | | | | |
| PROG. <i>11/70</i> | DATE <i>11/70</i> | | | | | | | | | | | | | | | | | | | | | | | | | | |
| PROG. <i>11/70</i> | DATE <i>11/70</i> | | | | | | | | | | | | | | | | | | | | | | | | | | |
| REMOVE BURRS AND BREAK SHARP CORNERS SURFACE QUALITY $\sqrt{16}$ | | | | TITLE UNITS ASSY 1170 | | | | | | | | | | | | | | | | | | | | | | | |
| THIRD ANGLE PROJECTION  | | | | NEXT HIGHER ASSY. B-D-0170-0 | | | | | | | | | | | | | | | | | | | | | | | |
| MATERIAL SEE PARTS LIST | | | | SIZE CODE E UA | | | | | | | | | | | | | | | | | | | | | | | |
| FINISH -- | | | | NUMBER 1170-0-0 | | | | | | | | | | | | | | | | | | | | | | | |
| SCALE <i>1/2" = 1"</i> | | | | REV. D | | | | | | | | | | | | | | | | | | | | | | | |
| DWT. <i>1.0</i> | | | | FIRST | | | | | | | | | | | | | | | | | | | | | | | |

THIS DRAWING AND SPECIFICATIONS HEREIN ARE THE PROPERTY OF BULLITT EQUIPMENT CORPORATION AND SHALL NOT BE REPRODUCED OR COPIED OR USED IN WHOLE OR IN PART AS THE BASIS FOR THE MANUFACTURE OF ANY OR OTHER EQUIPMENT WITHOUT THE WRITTEN PERMISSION OF BULLITT EQUIPMENT CORPORATION.



| POWER CORD HOOKUP | |
|-------------------|---------------------------|
| FROM | TO |
| UPPER H742 0 | 861 DE PHASE 1 (SWITCHED) |
| CAB 0 | |
| LOWER H742 0 | 861 DE PHASE 2 (SWITCHED) |
| CAB 0 | |
| MJ11-A | 861 DE PHASE 3 (SWITCHED) |
| CAB 1 | |

| ** CABLE HOOKUP | | | | | | | | | |
|-----------------|--------|--------|------|-----|--------|--------|------|-----|--|
| ITEM NO | SLOT | MODULE | CONN | CAB | SLOT | MODULE | CONN | CAB | |
| 62 | A-F,18 | MB143 | J1 | 0 | A-F,13 | MB148 | J1 | 1 | |
| 62 | A-F,18 | MB143 | J2 | 0 | A-F,13 | MB148 | J3 | 1 | |
| 62 | A-F,21 | MB145 | J2 | 0 | A-F,14 | MB149 | J3 | 1 | |
| 62 | A-F,21 | MB145 | J1 | 0 | A-F,14 | MB149 | J1 | 1 | |
| 64 | A-F,10 | MB134 | J1 | 0 | | CONSOL | J1 | 0 | |
| 64 | A-F,16 | MB140 | J2 | 0 | | CONSOL | J3 | 0 | |
| 64 | A-F,16 | MB140 | J1 | 0 | | CONSOL | J2 | 0 | |

| HARNESS TABLE | | |
|---------------|-------|----------------|
| ITEM NO | FROM | TO |
| 32 | P1 | J4 (CONS) |
| | P2 | J2 (BA) |
| | P3 | J3 (BP) |
| | P4 | J4 (BP) |
| | P5 | J5 (BP) |
| | P6 | J6 (BP) |
| | P7 | J7 (BP) |
| | P23 | J23 (BP) |
| | P27 | J27 (BP) |
| | P26 | J26 (BP) |
| | P25 | J25 (BP) |
| | P8 | J5 (BA11-F) |
| | P15 | J15 (H7420) |
| | P10 | J10 (H7420) |
| | P14 | J14 (H7420) |
| | P9 | J9 (H744) |
| | P11 | J11 (H744) |
| | P12 | J12 (H744) |
| | P13 | J13 (H744) |
| | P22 | J22 (H7420) |
| | P16 | J16 (H7420) |
| | P21 | J21 (H7420) |
| | P18 | J18 (H744) |
| | P19 | J19 (H744) |
| | P20 | J20 (H744) |
| | P17 | J17 (H744) |
| | P23 | J23 (B61) |
| | P24 | J24 (B61) |
| | PT112 | E-T-M (RH) |
| | PT113 | E-T-M (LH) |
| | PT144 | GND CHASSIS |
| | PT136 | GND CHASSIS |
| 32 | PT153 | GND CHASSIS |
| 51 | P1 | BAV0 J34 (B61) |
| 51 | P2 | BAV1 J32 (B61) |

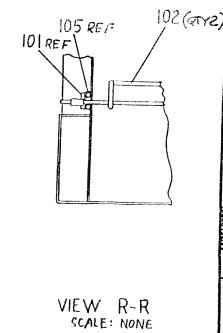
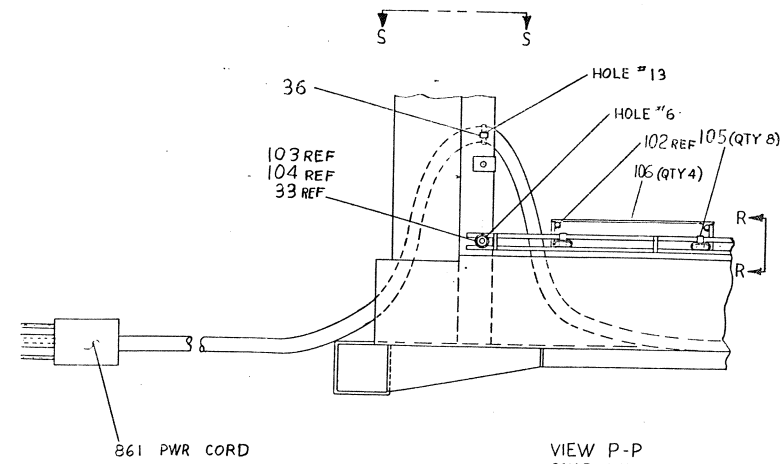
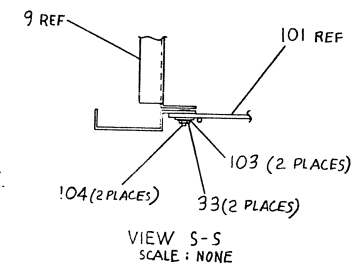
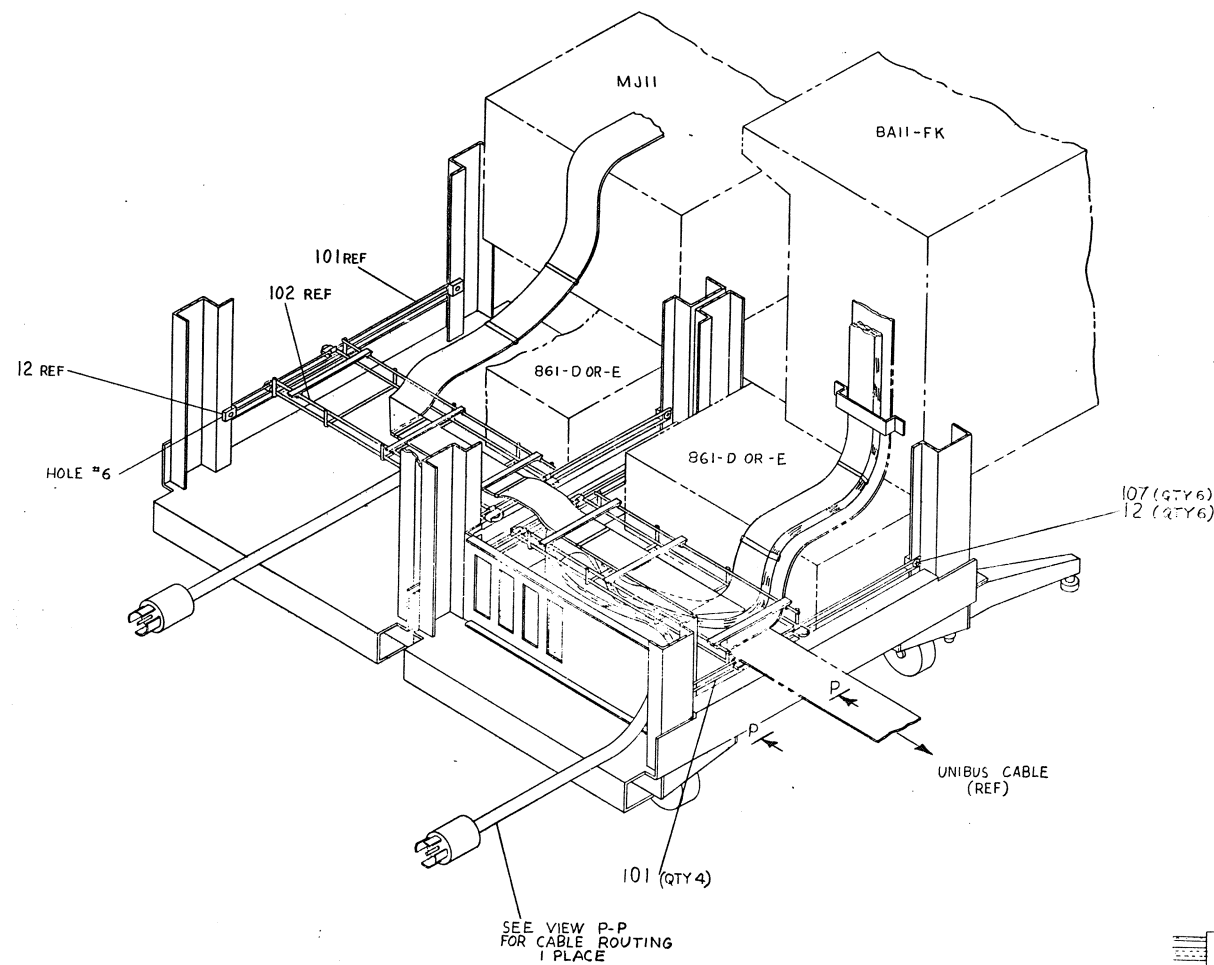
** SEE NOTE #5

| REVISIONS | |
|-----------|------------|
| CHK | CHANGE NO. |
| | |

THIS DRAWING AND
PROPERTY OF BELL
NOT BE REPRODUCED
PART AS THE BASIS
ITEMS HEREIN MAY
COPYRIGHT © 1970

ALL RIGHTS ARE THE
PROPERTY OF BELL
AND SHALL
NOT BE REPRODUCED
OR USED IN ANY
MANNER WITHOUT
WRITTEN PERMISSION
OF BELL TELEPHONE
EQUIPMENT COMPANY

J
H
F
E
D
C
B
A



| CHK | REVISIONS | CHANGE NO. | REV. |
|-----|-----------|------------|------|
| | | | |

| | | | | | | | | | |
|-------|-----------------|-------|------|-------|-----------|-------|---|------|---|
| TITLE | UNIT ASSY 11/70 | SCALE | 1/2" | SHEET | 2 | OF | 5 | REV. | D |
| DATE | 11/70 | BY | JA | NO. | 11/70-0-0 | DIST. | | | |

DIGITAL EQUIPMENT CORPORATION
MAYNARD, MASSACHUSETTS
PARTS LIST

QUANTITY / VARIATION

| | | | | | |
|----------|-----------------------------|--------------------------------------|---------------------|--------------|--|
| MADE BY | G. MARINI | CHECKED | D. HEALY | SECTION | |
| DATE | 1/16/75 | DATE | 2/19/75 | 1 | |
| ENG | <i>Don W. Adams</i> | PROD | <i>Don W. Adams</i> | ISSUED SECT. | |
| DATE | 3/26/75 | DATE | 3/24/75 | 1 | |
| ITEM NO. | DWG NO. / PART NO. | DESCRIPTION | | | |
| 1 | E-IA-7010297-0-0 | PANEL ASSY | | | |
| 2 | D-IA-7412671-0-0 | BRKT. PANEL SUPPORT | | | |
| 3 | 9006022-1 | SCR PHIL HD PAN #6-32 X .38 | | | |
| 4 | 9007651 | WASHER EXT. TOOTH LOCK #10 | | | |
| 5 | 9006073-3 | SCR PHIL HD TRUSS #10-32 X .50 | | | |
| 6 | D-UA-861-D-0 | POWER CONT 861-D 115V | | | |
| 7 | D-UA-861-E-0 | POWER CONT 861-E 230V | | | |
| 8 | D-UA-H952-AC-Ø | END PANEL H952-AC | | | |
| 9 | D-AD-7010574-0-0 | CONNECTOR PANEL ASSY | | | |
| 10 | D-UA-H7420-A-Ø | H742Ø-A POWER SUPPLY 120V | | | |
| 11 | D-UA-H7420-B-Ø | H742Ø-B POWER SUPPLY 240V | | | |
| 12 | 9007786 | NUT, SPRING #10 | | | |
| 13 | D-AD-7010532-0-0 | FULL DOOR UNIT ASSY | | | |
| 14 | C-PL-7006501-36-0 | BASIC CAB ASSY 19" | | | |
| 15 | D-IA-7010780-0-0 | PANEL LOGO 11/70 | | | |
| 16 | D-UA-H95Ø-QB-Ø | COVER PANEL 10½ H95Ø-QB | | | |
| 17 | 9006714 | WASH, NYLON .25 I.D. X .06 THK | | | |
| 18 | C-PS-1211386-0-0 | THICK LATCH MOULDING | | | |
| 19 | E-UA-BA11-FK-Ø | UNIT ASSY BA11-FK | | | |
| 20 | 9008848 | WASHER FIBER (ADHESIVE BACK) | | | |
| 21 | D-IA-7011033-0-0 | CLAMP, WIREBUS CABLE ASSY | | | |
| 22 | 1212316 | SPACER HEX #6-32 MALE X .38 | | | |

| | | | | | | | | | | | |
|---------------------------------|--|-----------------|--|----------|----------------|-----------|------|--------|-----------|------|---------|
| TITLE | | UNIT ASSY 11/70 | | ASSY NO. | E-UA-11/70-0-0 | SIZE CODE | A PL | NUMBER | 11/70-0-0 | REV. | ECO NO. |
| DEC FORM DEC 16-(325)-1031-N870 | | DRA 110 | | SHEET | 1 | OF | 6 | DIST. | | | |

DIGITAL EQUIPMENT CORPORATION
MAYNARD, MASSACHUSETTS
PARTS LIST

QUANTITY / VARIATION

| | | | | | |
|----------|--------------------------|--------------------------------|---------------------|--------------|--|
| MADE BY | G. MARINI | CHECKED | D. HEALY | SECTION | |
| DATE | 1/16/75 | DATE | 2/19/75 | 1 | |
| ENG | <i>Don W. Adams</i> | PROD | <i>Don W. Adams</i> | ISSUED SECT. | |
| DATE | 3/26/75 | DATE | 3/24/75 | 1 | |
| ITEM NO. | DWG NO. / PART NO. | DESCRIPTION | | | |
| 23 | D-IA-7413126-0-0 | PANEL INDICATOR | | | |
| 24 | 9006404-2 | SCR PHIL FLAT HD #6-32 X .38 | | | |
| 25 | E-PS-1210710-0-0 | BEZEL | | | |
| 26 | 9008887 | JUMPER ASSY | | | |
| 27 | C-PL-7006501-35-0 | BASIC CAB ASSY 19" | | | |
| 28 | D-IA-7010780-1-0 | PANEL LOGO (BLANK) | | | |
| 29 | D-AD-7010791-0-0 | FRONT DOOR ASSY | | | |
| 30 | E-UA-MJ11-AY-Ø | UNIT ASSY MJ11 | | | |
| 31 | E-UA-MJ11-AZ-Ø | UNIT ASSY MJ11 | | | |
| 32 | J-IA-7011051 -0-0 | HARNES POWER | | | |
| 33 | 9006565 | NUT KEPS #10-32 | | | |
| 34 | D-MD-7409446-0-0 | SUPPORT HARNESS | | | |
| 35 | A-PL-G727-Ø-Ø | GRANT CONTINUITY | | | |
| 36 | 9007880 | TIE WRAP | | | |
| 37 | 9008072 | WASHER EXT. TOOTH LOCK #8 | | | |
| 38 | 906037-1 | SCR PH HD PAN 8-32 X .38 | | | |
| 39 | A-PL-KB11-B-Ø | 16 BIT PROCESSOR | | | |
| 40 | 9007083 | CLAMP CABLE 3/8" | | | |
| 41 | 9007087 | CLAMP CABLE 5/8" | | | |
| 42 | 9007090 | CLAMP CABLE 7/8" | | | |
| 43 | 1201208 | METER ELAPSED TIME 120V / 60HZ | | | |
| 44 | 1202234 | METER ELAPSED TIME 120V / 50HZ | | | |

| | | | | | | | | | | | |
|---------------------------------|--|-----------------|--|----------|----------------|-----------|------|--------|-----------|------|---------|
| TITLE | | UNIT ASSY 11/70 | | ASSY NO. | E-UA-11/70-0-0 | SIZE CODE | A PL | NUMBER | 11/70-0-0 | REV. | ECO NO. |
| DEC FORM DEC 16-(325)-1031-N870 | | DRA 110 | | SHEET | 2 | OF | 6 | DIST. | | | |

DIGITAL EQUIPMENT CORPORATION
MAYNARD, MASSACHUSETTS
PARTS LIST

MADE BY G. MARINI
DATE 1/16/75
ENG *Don Weaver*
DATE 3/26/75
CHECKED D. HEALY
DATE 2/19/75
SECTION 1
PROD *Don Weaver*
DATE 3/24/75
ISSUED SECT. 1

| ITEM NO. | DWG NO. / PART NO. | DESCRIPTION | 11/70-CA | 11/70-CB | QUANTITY / VARIATION | | | | | | | | | |
|----------|--------------------|---|----------|----------|----------------------|--|--|--|--|--|--|--|--|--|
| 45 | D-MD-7409445-0-0 | BRKT. HARNESS SUPPORT | 1 | 1 | | | | | | | | | | |
| 46 | B-MD-7409447-0-0 | PLATE SUPPORT | 1 | 1 | | | | | | | | | | |
| 47 | 1700006-0-9 | POWER CORD, 115V 13A ### (9 FT) | 1 | - | | | | | | | | | | |
| 48 | 9007928-01 | CONN. SOLDERLESS CRIMP #10 HOLE | 3 | 3 | | | | | | | | | | |
| 49 | 9008264 | TIE MOUNT ADH. BACK | A/RA/R | | | | | | | | | | | |
| 50 | 3610267 | DECAL (DANGER HIGH VOLTAGE) | 2 | 2 | | | | | | | | | | |
| 51 | C-IA-7010695-0-0 | 861-D to 861-D HARNESS | 1 | 1 | | | | | | | | | | |
| 52 | 9006071-3 | SCR PHIL HD TRUSS #10-32 X .38 | 8 | 8 | | | | | | | | | | |
| 53 | D-IA-7409622-0-0 | BRKT. METER MTG. | 1 | 1 | | | | | | | | | | |
| 54 | 9009236-1 | SCR SELF TAP PH HD PAN 4-40 X .31 | 3 | 3 | | | | | | | | | | |
| 55 | 1700016-09 | POWER CORD 230V 10 A term (9 FT) | - | 1 | | | | | | | | | | |
| 56 | 9006899 | STRIP, TERM (4 TERM) | 1 | 1 | | | | | | | | | | |
| 57 | 9006568 | NUT, KEPS 5/16-18 | 3 | 3 | | | | | | | | | | |
| 58 | 9007929-01 | CONN SOLDERLESS #6 HOLE | 4 | 4 | | | | | | | | | | |
| 59 | 9006025-1 | SCR PHIL HD PAN 6-32 X .62 | 4 | 4 | | | | | | | | | | |
| 60 | 9006560 | NUT KEPS #6-32 | 4 | 4 | | | | | | | | | | |
| 61 | C-MD-7407607-0-0 | PLATE, JONES STRIP | 1 | 1 | | | | | | | | | | |
| 62 | D-AD-7010823-0-0 | CABLE ASSY | 1 | 1 | | | | | | | | | | |
| 63 | D-CS-H873-0-1 | TERMINATOR, MEMORY BUS | 4 | 4 | | | | | | | | | | |
| 64 | D-UA-BC06R-02-0 | I/O CABLE BC06R | 3 | 3 | | | | | | | | | | |
| 65 | 9006011-1 | SCR PHIL PAN #4-40 X .38 | 8 | 8 | | | | | | | | | | |
| 66 | E-UA-H744-0-0 | 5V REGULATOR | 7 | 7 | | | | | | | | | | |

TITLE

UNIT ASSY 11/70

ASSY NO.
E-UA-11/70-0-0

DEC FORM DEC 16-(325)-1031-N870
DRA 110

SHEET 3 OF 6

DIST.

SIZE CODE
A PL

NUMBER
11/70-0-0

REV. ECO NO.
D

DIGITAL EQUIPMENT CORPORATION
MAYNARD, MASSACHUSETTS
PARTS LIST

MADE BY G. MARINI
DATE 1/16/75
ENG *Don Weaver*
DATE 3/26/75
CHECKED D. HEALY
DATE 2/19/75
SECTION 1
PROD *Don Weaver*
DATE 3/24/75
ISSUED SECT. 1

| ITEM NO. | DWG NO. / PART NO. | DESCRIPTION | 11/70-CA | 11/70-CB | QUANTITY / VARIATION | | | | | | | | | |
|----------|--------------------|---------------------------------------|----------|----------|----------------------|--|--|--|--|--|--|--|--|--|
| 67 | A-PL-7010865-0-0 | SHIPPING BRKT. (PROCESSOR) | 1 | 1 | | | | | | | | | | |
| 68 | D-PS-1210568-03-0 | SHIPPING SKID | 1 | 1 | | | | | | | | | | |
| 69 | A-PS-9905128-2 | SHIPPING BAG (DOUBLE BAY) | 1 | 1 | | | | | | | | | | |
| 70 | 9006633 | WASH. INT. TOOTH #6 | 12 | 12 | | | | | | | | | | |
| 71 | B-DD-DL11-A | SYNC LINE INTERFACE DL11-A | 1 | 1 | | | | | | | | | | |
| 72 | D-CS-M9301-YC-1 | TERMINATOR BOOT STRAP | 1 | 1 | | | | | | | | | | |
| 73 | D-CS-M9302-0-1 | BUS TERMINATOR | 1 | 1 | | | | | | | | | | |
| 74 | B-DD-KW11-L | LINE TIME CLOCK INTERFACE KW11-L | 1 | 1 | | | | | | | | | | |
| 75 | 1209340-00 | CONN., 8 PIN FEMALE | 4 | 4 | | | | | | | | | | |
| 76 | 1209350-15 | CONN., 15 PIN FEMALE | 1 | 1 | | | | | | | | | | |
| 77 | 1209350-06 | CONN., 6 PIN FEMALE | 1 | 1 | | | | | | | | | | |
| 78 | 9006632 | WASH. INT TOOTH #4 | 8 | 8 | | | | | | | | | | |
| 79 | 9006077-3 | SCR. PHL HD TRUSS #10-32 x 1.00 | 2 | 2 | | | | | | | | | | |
| 80 | B-MD-7413664-0-0 | BRKT. LOCKING | 2 | 2 | | | | | | | | | | |
| 81 | D-SC-1209856-0-02 | MODULE HOLDER | A/RA/R | | | | | | | | | | | |
| 82 | D-DD-TR36-0 | DEC WRITER | 1 | 1 | | | | | | | | | | |
| 83 | 3612424-00 | 11/70 PROCESSOR MODULE PLACE. STICKER | 1 | 1 | | | | | | | | | | |
| 84 | 3612425-00 | DECAL CABINET DESIGNATIONS | 1 | 1 | | | | | | | | | | |
| 85 | 3612425-01 | DECAL CABINET DESIGNATIONS | 1 | 1 | | | | | | | | | | |
| 86 | 3612426-00 | DECALS, 11/70 REG. CONFIGURATION | 1 | 1 | | | | | | | | | | |
| REF | D-AR-11/70-0-1 | 11/70 SYSTEM EXPANSION | REF | | | | | | | | | | | |

TITLE

UNIT ASSY 11/70

ASSY NO.
E-UA-11/70-0-0

DEC FORM DEC 16-(325)-1031-N870
DRA 110

SHEET 6 OF 6

DIST.

SIZE CODE
A PL

NUMBER
11/70-0-0

REV. ECO NO.
D

