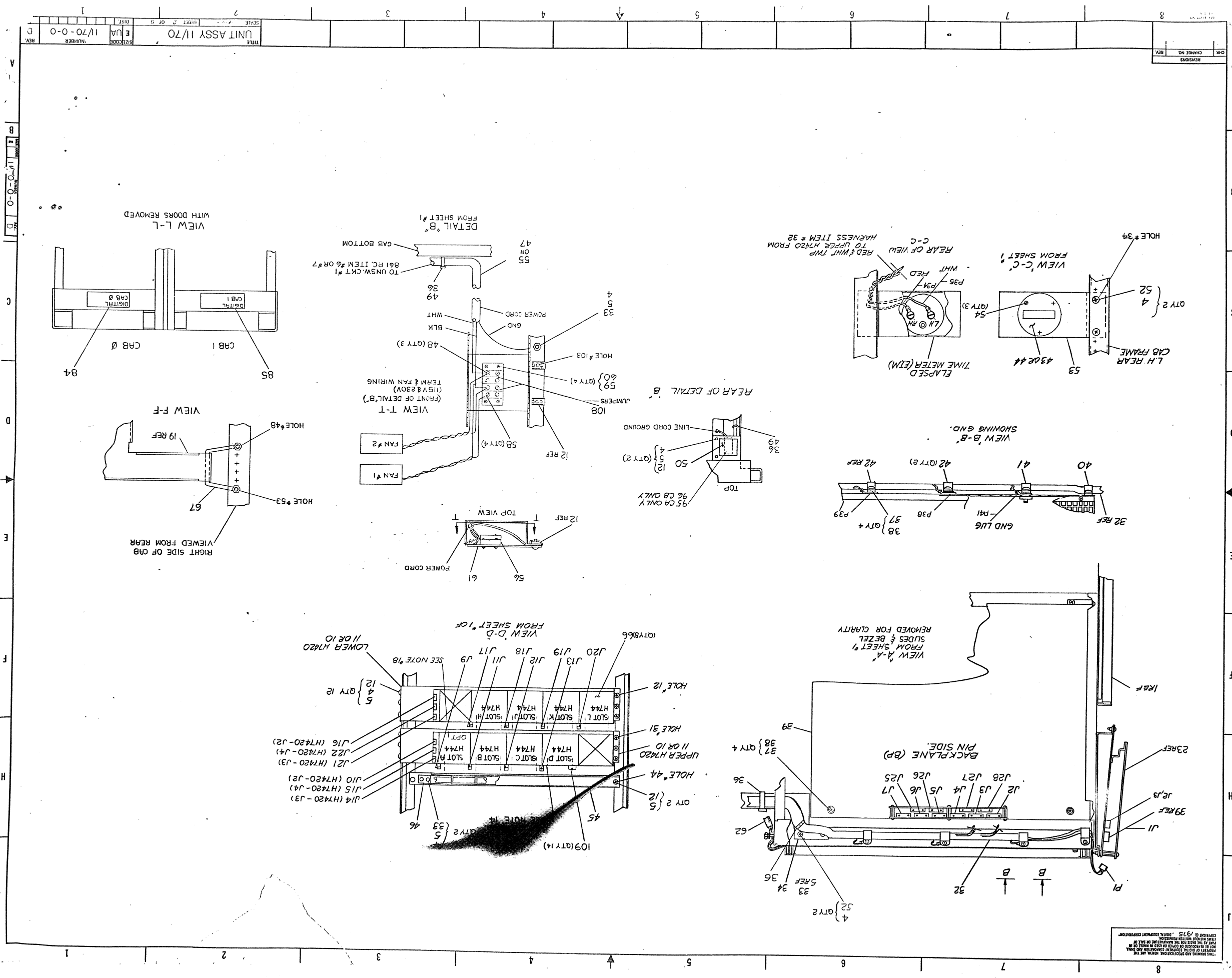


FIRST USED ON OPTION/MODEL <i>11/70</i>				QTY.	DESCRIPTION	PART NO.	ITEM NO.												
DIMENSIONAL TOLERANCE				PARTS LIST															
DIMENSIONS ARE <u>MILLIMETERS</u> UNLESS OTHERWISE SPECIFIED				DRN. <i>11/70</i>	DATE	<b>digital</b>													
				CHK'D.	DATE														
				ENG. <i>11/70</i>	DATE <i>11/70</i>														
				PROG. ENG. <i>11/70</i>	DATE <i>11/70</i>														
				PROV. <i>11/70</i>	DATE <i>11/70</i>														
REVISIONS				TITLE															
<table border="1"> <thead> <tr> <th>MILLIMETERS</th> <th>INCHES</th> <th>ANGLES</th> </tr> </thead> <tbody> <tr> <td>X.XX ±0.10</td> <td>XXX ±.005</td> <td>10° 30'</td> </tr> <tr> <td>X.X ±0.5</td> <td>X ±.02</td> <td></td> </tr> <tr> <td>X ±.2</td> <td>X ±.1</td> <td></td> </tr> </tbody> </table>				MILLIMETERS	INCHES	ANGLES	X.XX ±0.10	XXX ±.005	10° 30'	X.X ±0.5	X ±.02		X ±.2	X ±.1		UNITE ASSY <i>1/70</i>			
MILLIMETERS	INCHES	ANGLES																	
X.XX ±0.10	XXX ±.005	10° 30'																	
X.X ±0.5	X ±.02																		
X ±.2	X ±.1																		
THIRD ANGLE PROJECTION				NEXT HIGHER ASSY.															
REMOVE BURRS AND BREAK SHARP CORNERS SURFACE QUALITY				B-D-0-170-0															
MATERIAL SEE PARTS LIST				SIZE CODE	NUMBER	REV.													
FINISH				U	11/70-0-0	D													
SCALE <i>1/2"=1"</i>				FIG.															



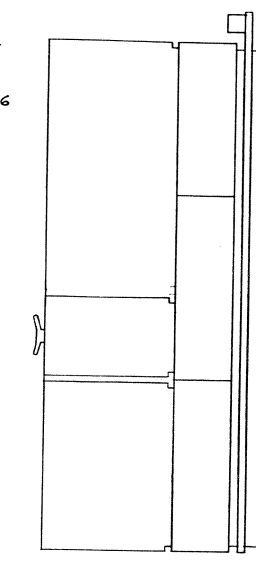
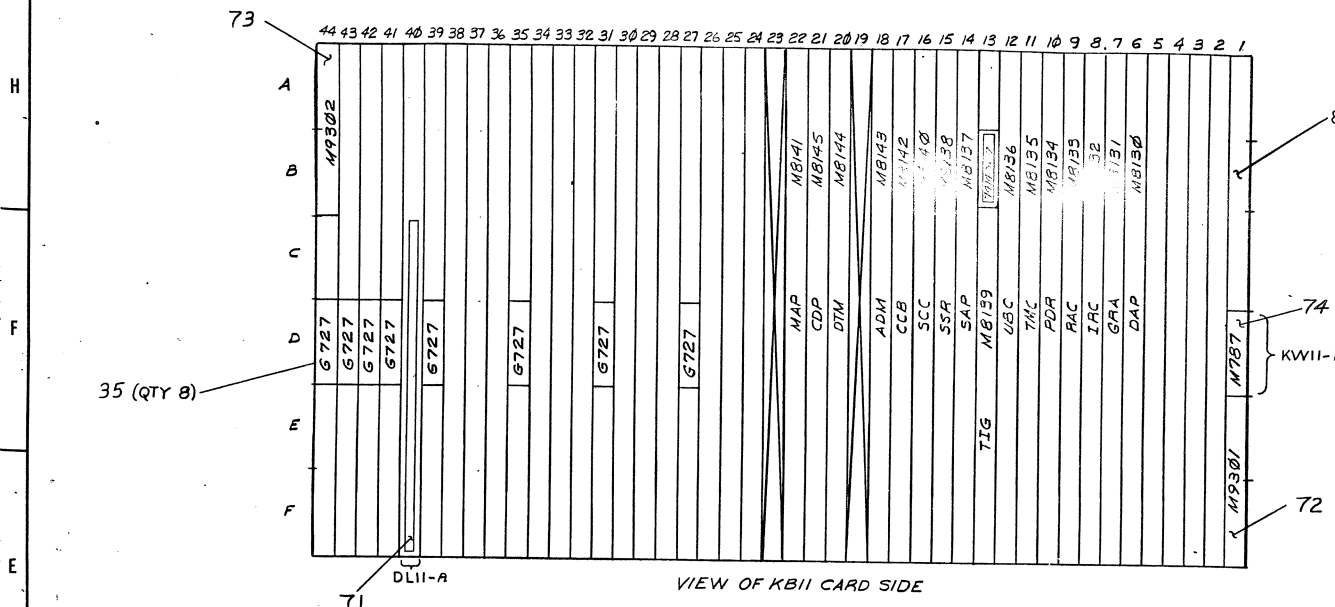
THIS DRAWING AND SPECIFICATIONS HEREIN ARE THE PROPERTY OF THE UNITED STATES GOVERNMENT AND ARE NOT TO BE REPRODUCED OR TRANSMITTED IN ANY FORM OR BY ANY MEANS, ELECTRONIC OR MECHANICAL, INCLUDING PHOTOCOPYING, RECORDING, OR BY ANY INFORMATION STORAGE AND RETRIEVAL SYSTEM, WITHOUT PERMISSION IN WRITING FROM THE UNITED STATES GOVERNMENT.

THIS DRAWING AND SPECIFICATIONS, HEREIN, ARE THE PROPERTY OF SULLY EQUIPMENT CORPORATION AND SHALL NOT BE REPRODUCED OR COPIED OR USED IN WHOLE OR IN PART AS THE BASIS FOR THE MANUFACTURE OF ANY OR OTHER WITHOUT WRITTEN PERMISSION.  
COPYRIGHT © 1975 SULLY EQUIPMENT CORPORATION

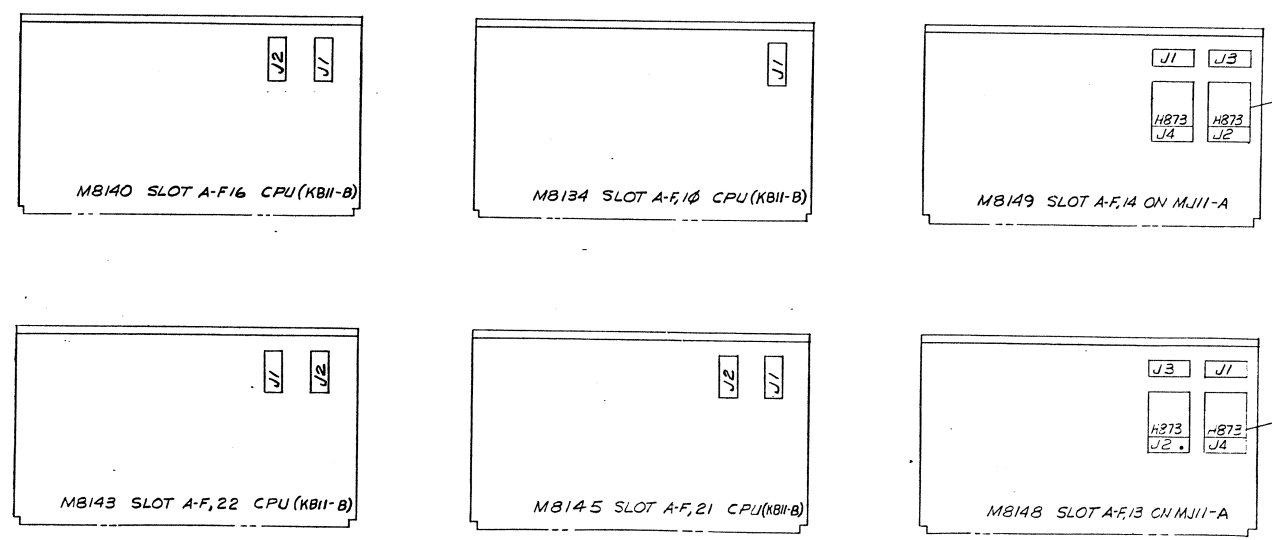
POWER CORD HOOKUP	
FROM	TO
UPPER H7420 CAB 0	361 DE PHASE 1 (SWITCHED)
LOWER H7420 CAB 0	361 DE PHASE 2 (SWITCHED)
MJ11-A CAB 1	361 DE PHASE 3 (SWITCHED)

** CABLE HOOKUP									
FROM					TO				
ITEM NO	SLOT	MODULE	CONN	CAB	SLOT	MODULE	CONN	CAB	
62	A-F,18	MB143	J1	0	A-F,13	MB148	J1	1	
62	A-F,18	MB143	J2	0	A-F,13	MB148	J3	1	
62	A-F,21	MB145	J2	0	A-F,14	MB149	J3	1	
62	A-F,21	MB145	J1	0	A-F,14	MB149	J1	1	
64	A-F,10	MB134	J1	0	-	CONSOL	J1	0	
64	A-F,16	MB140	J2	0	-	CONSOL	J3	0	
64	A-F,16	MB140	J1	0	-	CONSOL	J2	0	

HARNESS TABLE		
ITEM NO	FROM	TO
32	P1	J4 (CONS)
	P2	J2 (BP)
	P3	J3 (BP)
	P4	J4 (BP)
	P5	J5 (BP)
	P6	J6 (BP)
	P7	J7 (BP)
	P23	J23 (BP)
	P27	J27 (BP)
	P26	J26 (BP)
	P25	J25 (BP)
	P8	J5 (BAIL-F)
	P15	J15 (H7420)
	P10	J10 (H7420)
	P14	J14 (H7420)
	P9	J9 (H744)
	P11	J11 (H744)
	P12	J12 (H744)
	P13	J13 (H744)
	P22	J22 (H7420)
	P16	J16 (H7420)
	P21	J21 (H7420)
	P18	J18 (H744)
	P19	J19 (H744)
	P20	J20 (H744)
	P17	J17 (H744)
	P23	J23 (B61)
	P24	J24 (B61)
	PT112	E-TM (RH)
	PT113	E-TM (LH)
	PT144	GND CHASSIS
	PT136	GND CHASSIS
32	PT153	GND CHASSIS
51	P1	BA70 J34 (B61)
51	P2	BA70 J32 (B61)



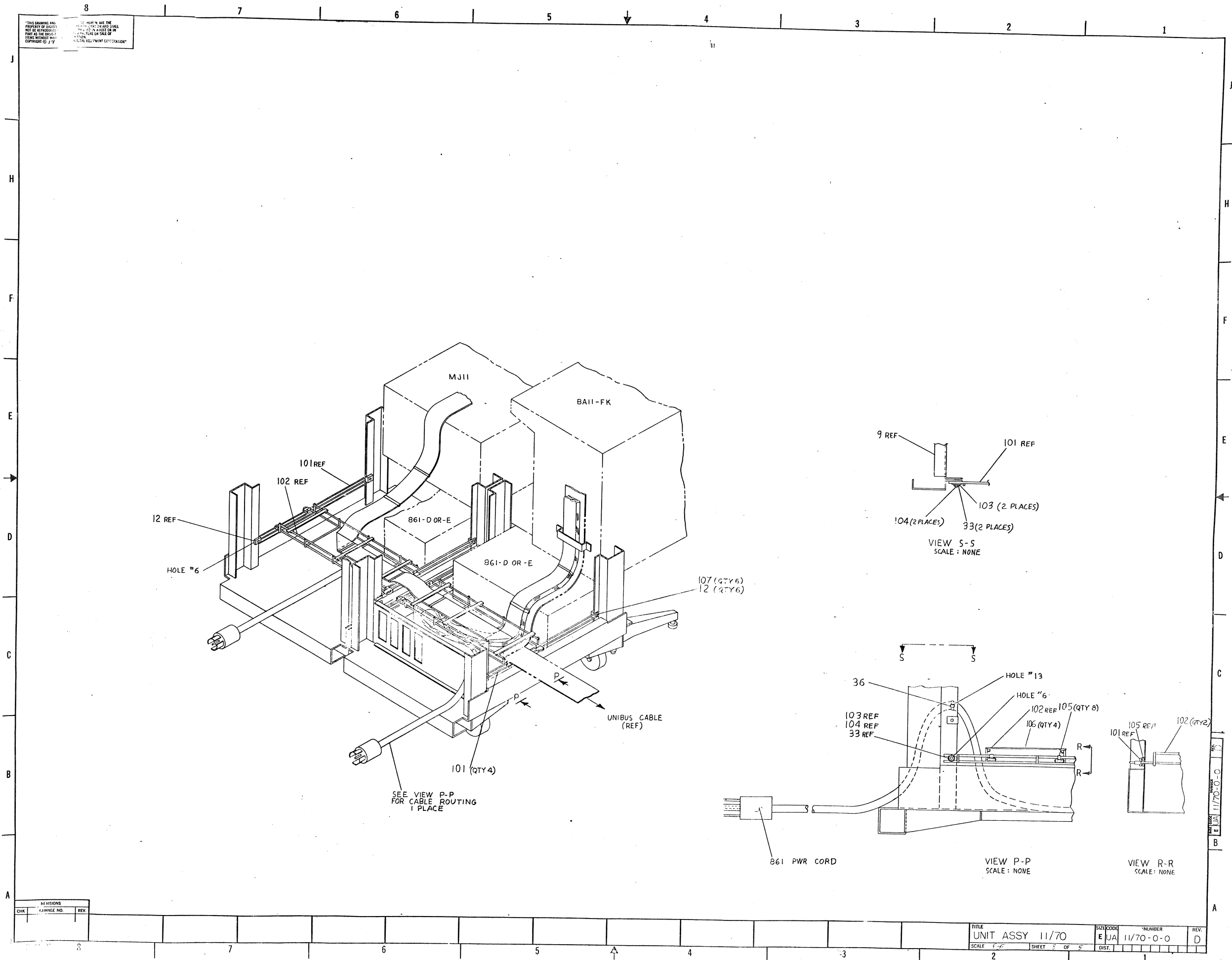
\*\* SEE NOTE #5







THIS DRAWING AND THE INFORMATION CONTAINED HEREIN ARE THE PROPERTY OF THE UNITED STATES GOVERNMENT AND ARE NOT TO BE REPRODUCED OR TRANSMITTED IN ANY FORM OR BY ANY MEANS, ELECTRONIC OR MECHANICAL, INCLUDING PHOTOCOPYING, RECORDING, OR BY ANY INFORMATION STORAGE AND RETRIEVAL SYSTEM, WITHOUT PERMISSION IN WRITING FROM THE UNITED STATES GOVERNMENT.



CHK	REV	CHANGE NO.

TITLE	UNIT ASSY 11/70	SCALE	1/2"	SHEET	3	OF	5
DATE	11/70	BY	JA	REV.	D		



DIGITAL EQUIPMENT CORPORATION  
MAYNARD, MASSACHUSETTS

PARTS LIST

MADE BY G. MARINI  
DATE 1/16/75  
ENG *Don Weaver*  
DATE 3/26/75

CHECKED D. HEALY  
DATE 2/19/75  
PROD *Don Weaver*  
DATE 3/24/75

SECTION 1  
ISSUED SECT. 1

ITEM NO.	DWG NO. / PART NO.	DESCRIPTION	11/70-CA	11/70-CB	QUANTITY / VARIATION											
45	D-MD-7409445-0-0	BRKT. HARNESS SUPPORT	1	1												
46	B-MD-7409447-0-0	PLATE SUPPORT	1	1												
47	1700006-0-9	POWER CORD, 115V 13A <del>###</del> (9 FT)	1	-												
48	9007928-01	CONN. SOLDERLESS CRIMP #10 HOLE	3	3												
49	9008264	TIE MOUNT ADH. BACK	A/RA/R													
50	3610267	DECAL (DANGER HIGH VOLTAGE)	2	2												
51	C-IA-7010695-0-0	861-D to 861-D HARNESS	1	1												
52	9006071-3	SCR PHIL HD TRUSS #10-32 X .38	8	8												
53	D-IA-7409622-0-0	BRKT. METER MTG.	1	1												
54	9009236-1	SCR SELF TAP PH HD PAN 4-40 X .31	3	3												
55	1700016-09	POWER CORD 230V 10 A <del>term</del> (9 FT)	-	1												
56	9006899	STRIP, TERM (4 TERM)	1	1												
57	9006568	NUT, KEPS 5/16-18	3	3												
58	9007929-01	CONN SOLDERLESS #6 HOLE	4	4												
59	9006025-1	SCR PHIL HD PAN 6-32 X .62	4	4												
60	9006560	NUT KEPS #6-32	4	4												
61	C-MD-7407607-0-0	PLATE, JONES STRIP	1	1												
62	D-AD-7010823-0-0	CABLE ASSY	1	1												
63	D-CS-H873-0-1	TERMINATOR, MEMORY BUS	4	4												
64	D-UA-BC06R-02-0	I/O CABLE BC06R	3	3												
65	9006011-1	SCR PHIL PAN #4-40 X .38	8	8												
66	E-UA-H744-0-0	5V REGULATOR	7	7												
TITLE			SIZE CODE		NUMBER										REV. ECO NO.	
UNIT ASSY 11/70			A PL		11/70-0-0										D	
SHEET 3 OF 6			DIST.													

DEC FORM DEC 16-(325)-1031-N870  
DRA 110

DIGITAL EQUIPMENT CORPORATION  
MAYNARD, MASSACHUSETTS

PARTS LIST

MADE BY G. MARINI  
DATE 1/16/75  
ENG *Don Weaver*  
DATE 3/26/75

CHECKED D. HEALY  
DATE 2/19/75  
PROD *Don Weaver*  
DATE 3/24/75

SECTION 1  
ISSUED SECT. 1

ITEM NO.	DWG NO. / PART NO.	DESCRIPTION	11/70-CA	11/70-CB	QUANTITY / VARIATION											
67	A-PL-7010865-0-0	SHIPPING BRKT. (PROCESSOR)	1	1												
68	D-PS-1210568-03-0	SHIPPING SKID	1	1												
69	A-PS-9905128-2	SHIPPING BAG (DOUBLE BAY)	1	1												
70	9006633	WASH. INT. TOOTH #6	12	12												
71	B-DD-DL11-A	SYNC LINE INTERFACE DL11-A	1	1												
72	D-CS-M9301-YC-1	TERMINATOR BOOT STRAP	1	1												
73	D-CS-M9302-0-1	BUS TERMINATOR	1	1												
74	B-DD-KW11-L	LINE TIME CLOCK INTERFACE KW11-L	1	1												
75	1209340-00	CONN., 8 PIN FEMALE	4	4												
76	1209350-15	CONN., 15 PIN FEMALE	1	1												
77	1209350-06	CONN., 6 PIN FEMALE	1	1												
78	9006632	WASH. INT TOOTH #4	8	8												
79	9006077-3	SCR. PHL HD TRUSS #10-32 x 1.00	2	2												
80	B-MD-7413664-0-0	BRKT. LOCKING	2	2												
81	D-SC-1209856-0-02	MODULE HOLDER	A/RA/R													
82	D-DD-TR36-0	DEC WRITER	1	1												
83	3612424-00	11/70 PROCESSOR MODULE PLACE. STICKER	1	1												
84	3612425-00	DECAL CABINET DESIGNATIONS	1	1												
85	3612425-01	DECAL CABINET DESIGNATIONS	1	1												
86	3612426-00	DECALS, 11/70 REG. CONFIGURATION	1	1												
REF	D-AR-11/70-0-1	11/70 SYSTEM EXPANSION	REF	REF												
TITLE			SIZE CODE		NUMBER										REV. ECO NO.	
UNIT ASSY 11/70			A PL		11/70-0-0										D	
SHEET 3 OF 6			DIST.													

DEC FORM DEC 16-(325)-1031-N870  
DRA 110



QUANTITY / VARIATION
----------------------

11/70-CA

11/70-CB

[illegible]

TITLE		ASSY NO.		SIZE	CODE	NUMBER		P. V.		ECO NO.	
UNIT ASSY 11/70		E-UA-11/70-0-0		A	PL	11/70-0-0		D			
SHEET 5 OF 6		DIST.									

[illegible]

MADE BY G. MARINI					
DATE 1/16/75		CHECKED DATE D. HEALY 2/19/75	SECTION 1		
ENG T. NORTHRUP		PROD DON WEAVER	ISSUED SECT. 1		
DATE 3/26/75					
ITEM NO.	DWG NO./PART NO.	DESCRIPTION			
108	9009002	CINCH JONES JUMPER			
109	9009228-10	SCREW, SEMS PHL PAN HD #10-32 x .38			
110	9006022-3	SCREW, PHL TRUSS HD #6-32 x .38			
TITLE	UNIT ASSY 11/70	ASSY NO. E-UA-11/70-0-0		SHEET 6 OF 6	SIZE CODE A PL DIST.
		NUMBER 11/70-0-0		REV. ECO NO. D	