

# DRAWING DIRECTORY

## CUSTOMER PRINT SET INDEX

THIS IS PRINT SET

	SEQUENCE
TIMING DIAGRAM	D-TD-KW11-L-02
LINE FREQUENCY CLOCK	D-BS-KW11-L-01
LINE CLOCK	D-CS-M787-0-1
LINE FREQUENCY CLOCK	A-PL-KW11-L-0
SOFTWARE LIST	A-SL-KW11-L-28

MFG PRINTS

TEST PROCEDURE A-SP-KW11-L-03

## UNIT VARIATIONS

PRINT SET TYPE

[illegible][illegible]





THIS IS PRINT SET 

--	--	--	--

B-BD-MJ11-A-BD  
D-TD-MJ11-A-TD  
D-CS-M8148-Ø-1  
D-CS-M8149-Ø-1  
D-CS-G114-Ø-1  
D-CS-H217-C-1  
D-CS-G235-Ø-1  
D-CS-5411553-0-1  
D-CS-5411581-0-1  
D-CS-5411583-0-1  
D-IA-7010580-0-0  
D-IA-7010581-0-0  
B-DD-861-D  
B-DD-861-E  
D-AD-7010824-0-0  
D-AD-7010826-0-0  
D-IA-7010974-0-0  
D-IA-7010974-0-0  
A-SP-3700195-0-0  
A-SP-3700194-0-0

[illegible]

REV		CHG. NO.		DATE		REVISIONS	
A	MJ11-A-1	5-75					
B	MJ11-A-2	6-75					
C	MJ11-A-3	8-75					

USED ON OPTION/MODEL		ORN	DATE	TITLE DRAWING DIRECTORY MJ11-A	
11/70		G. MARINI	1/23/75		
		CHK'D.	DATE		
		D. HEALY	2/5/75		
		PROJ ENGR	DATE		
		<i>[Signature]</i>	3/28/75		
		PROD.	DATE	SIZE	CODE
		<i>[Signature]</i>	3/24/75	B	DD
		FIELD SERV.	DATE	NUMBER	
		<i>[Signature]</i>	3/24/75	MJ11-A	
SHEET 1 OF 8				REV	
				C	

DIST									
------	--	--	--	--	--	--	--	--	--

DRB 106

DEC 16-12381-1005-1A-NB72

[illegible]

REVIEWS									
REV.	DATE	CHG. NO.	APP'D.						
A	8/71	MISC-86	<i>ms</i>						
				DRN.	DATE3-				
				PEYFER	11-70				
				CHKD.	DATE3-				
				PEYFER	11-70				
				ENG.	DATE				
				O LAUGHUN	5-4-70				
				PROJ ENG.	DATE				
				O LAUGHUN	5-4-70				
				PROD.	DATE				
				MACDONALD	5-5-70				
				FIRST USED ON					
				K111					
				SCALE	NONE				
				SHEET	1	OF	2		
TITLE									
MAINTENANCE PANEL									
SIZE CODE		NUMBER		REV.					
A ML		K111-0		A					
DIST.									

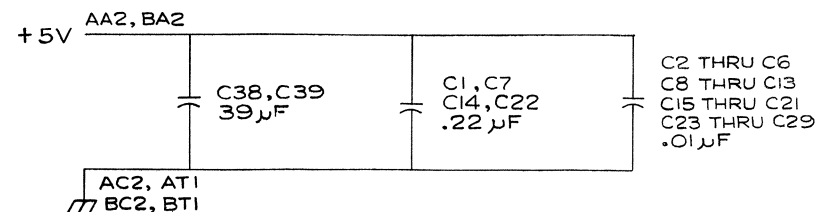
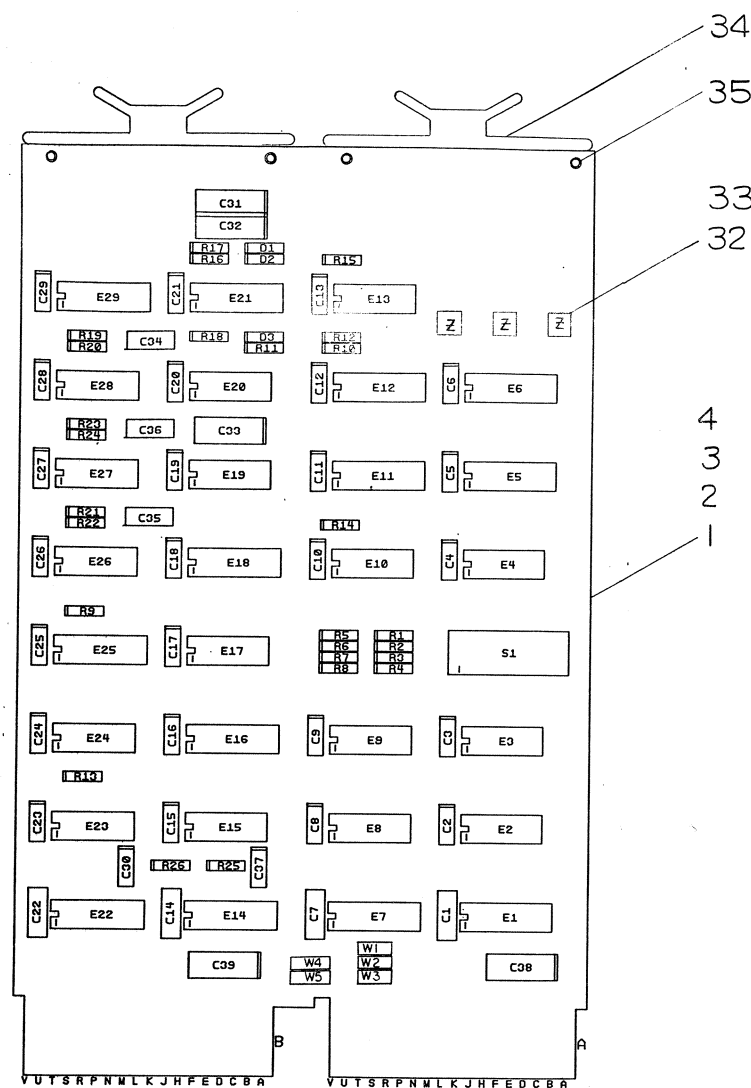
Dec 16-(325)-1048-N471

[illegible]

DEC 16-(325)-1048-1-N471



1. IN PDP11/04, 11/09 AND PDP 11/34, 11/39 SYSTEMS WITHOUT BATTERY BACKUP, TP1 SHOULD NOT BE CONNECTED TO THE POWER SUPPLY BATTERY STATUS SIGNAL UNLESS BOOTS ON ALL POWER RESTARTS ARE DESIRED.
2. IN ALL PDP11 SYSTEM WHOSE PROCESSOR MODULE DOES NOT CONTAIN GRANT PULL-UP RESISTORS, EITHER THE M9301 MUST BE POSITIONED IN THE TERMINATOR SLOT AT THE END OF THE UNIBUS FURTHEST FROM THE PROCESSOR OR JUMPERS W1 THRU W5 MUST BE INSTALLED, SO THE M9301 CAN BE INSERTED IN THE TERMINATOR SLOT NEXT TO THE PROCESSOR.
3. ON PDP11 SYSTEMS CONTAINING A BUS REPEATER OPTION, THE M9301 MUST BE INSTALLED ON THE PROCESSOR SIDE OF THE REPEATER SEE NOTE 2 FOR OTHER RESTRICTIONS.



I. C. DEC 314	1	8
I. C. DEC 7476	13	5
I. C. DEC 8640	1	8
I. C. DEC 8837	8	16
I. C. DEC 9602	8	16
IC TYPE	GND	+5V
GND AND 5V ARE USUALLY PIN 7 AND 14 RESPECTIVELY EXCEPTIONS ARE STATED ABOVE		
IC PIN LOCATIONS		

DEC FORM NO. 8  
DRD 135.8

3					H	I-0-1026W	SOIC	2	1
REF	REF	REF	REF	REF					
REF	REF	REF	REF	REF		X-Y COORDINATE HOLE LOCATION		K-C0-M9301-0-4	1
REF	REF	REF	REF	REF		ASSY/DRILLING HOLE LAYOUT		D-AH-M9301-0-5	2
REF	REF	REF	REF	REF		MODULE ECO HISTORY		B-MH-M9301-0-6	3
1	1	1	1	1		ETCHED CIRCUIT BOARD		5011208	4
4	4	4	4	4	C1, C7, C14, C22	CAP .22 $\mu$ F 50V		1010274-01	5
25	25	25	25	25	C2 THRU C6, C8 THRU C13 C15 THRU C21, C23 THRU C29	CAP .01 $\mu$ F 100V 20%		1001610-01	6
2	2	2	2	2	C30, C37	CAP .001 $\mu$ F 250V 20%		1000043	7
4	4	4	4	4	C32, C33, C38, C39	CAP 39 $\mu$ F 10V 10%		1000076	8
3	3	3	3	3	C34, C35, C36	CAP 270pF 100V 5%		1000022	9
3	3	3	3	3	D1, D2, D3	DIODE DGG4 1N3606		1100114	10
8	8	8	8	8	R1 THRU R8	RES 10K 1/4W 5%		1300479	11
2	2	2	2	2	R9, R12	RES 1K 1/4W 5%		1300365	12
4	4	4	4	4	R11, R13, R14, R18	RES 4.7K 1/4W 5%		1300447	13
2	2	2	2	2	R16, R17	RES 30K 1/4W 5%		1302394	14
3	3	3	3	3	R19, R21, R23	RES 47 $\Omega$ 1/4W 5%		1300202	15
3	3	3	3	3	R20, R22, R24	RES 2K 1/4W 5%		1302388	16
2	2	2	2	2	R25, R26	RES 383 $\Omega$ 1/4W 5%		1305125	17
2	2	2	2	2	E1, E22	28 RES DIVIDER NETWORK		13-12628-00	18
2	2	2	2	2	E7, E14	25 RES DIVIDER NETWORK		13-12628-01	19
8	8	8	8	8	E2, E3, E8, E9 E15, E23, E27, E28	I.C. DEC 8881		1909705	20
2	2	2	2	2	E4, E10	I.C. DEC 7402		1909004	21
1	1	1	1	1	E13	I.C. DEC 7474		1905547	22
3	3	3	3	3	E16, E18, E25	I.C. DEC 8837		1911116	23
1	1	1	1	1	E17	I.C. DEC 7420		1905577	24
2	2	2	2	2	E19, E24	I.C. DEC 314A		1909704	25
1	1	1	1	1	E20	I.C. DEC 8640		1911469	26
1	1	1	1	1	E21	I.C. DEC 9602		1910951	27
1	1	1	1	1	E26	I.C. DEC 7437		1910091	28
1	1	1	1	1	E29	I.C. DEC 7476		1905585	29
1	1	1	1	1	S1	SWITCH, DIP, 10 POLE		1211164-06	30
1	1	1	1	1		SWITCH COVER		1211184-06	31
3	3	3	3	3		EYELET (FASTON)		9009000	32
3	3	3	3	3	TP1, TP2, TP3	TAB (FASTON)		9007112	33
2	2	2	2	2		HANDLE FLIP/CHIP MAGENTA		9008337-06	34
4	4	4	4	4		EYELET		9006732	35
1	1	1	1	1	C31	CAP 1 $\mu$ F 35V 10%		1001776	36

[illegible]

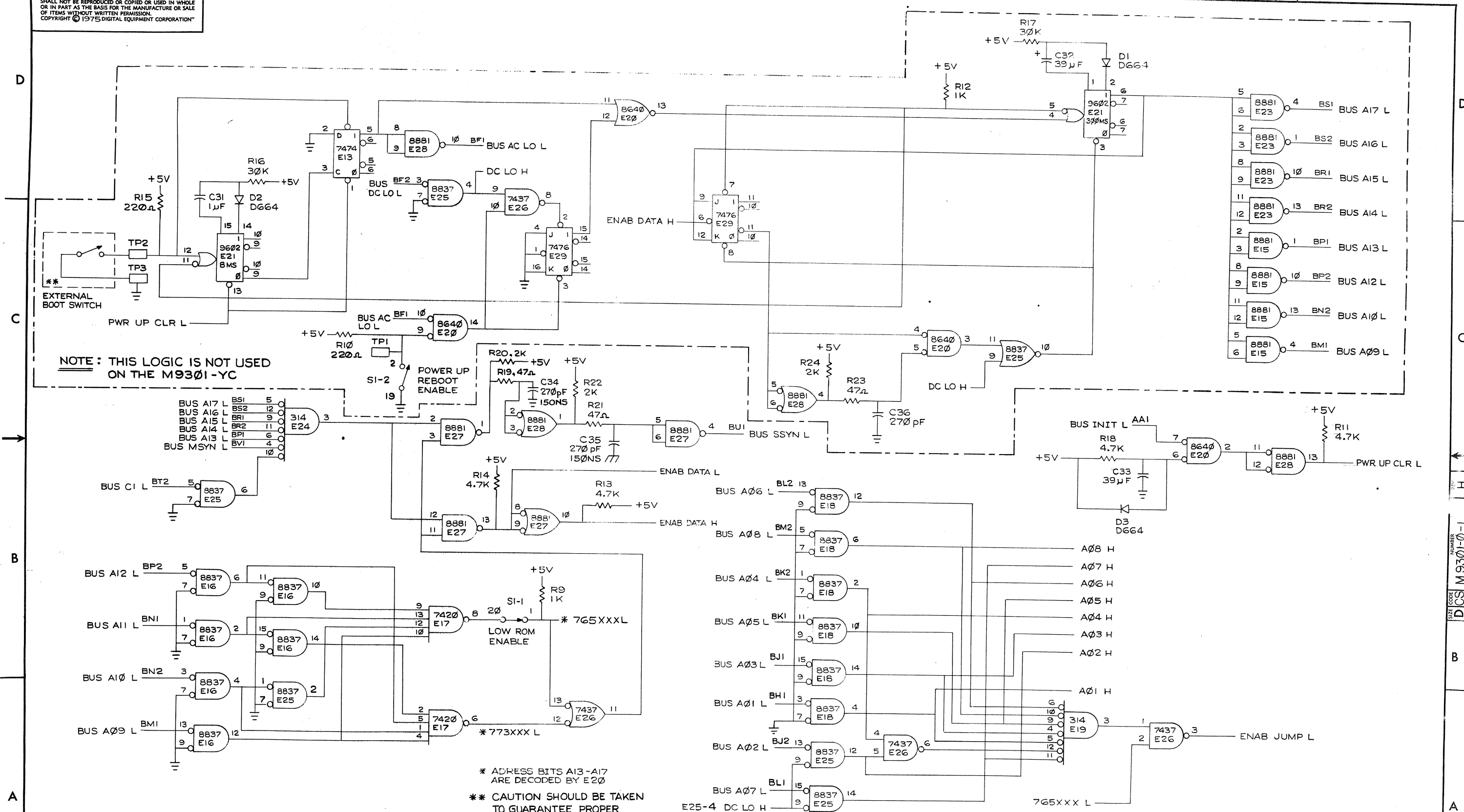
QTY		REF. DESIGNATION		DESCRIPTION		PART NO.		ITEM NO.	
FIRST USED ON OPTION MODEL		PARTS LIST							
11/04		ETCH BOARD REV. F							
				DRN. J. VINCENT		DATE 4/9/75		<div style="border: 2px solid black; padding: 5px; text-align: center; font-size: 1.5em; font-weight: bold;">digital</div>	
				CHK'D. R. COOK		DATE 5/28/75			
				ENG. T. DUBANIEUR		DATE 6/23/75			
				PROJ. ENG. J. BLOEM		DATE 6/19/75			
				PROD. R. PETERSON		DATE 6/30/75			
				NEXT HIGHER ASSY					
DEC NO.		EIA NO.		DEC NO.		EIA NO.		TITLE UNIBUS TERMINATOR/ BOOTSTRAP	
SCALE		— —		SIZE CODE D CS		NUMBER M9301-0-1		REV. H	
SHEET		1 OF 5		DIST.					

SEMICONDUCTOR CONVERSION CHART

0	Blo...	12-2-75
JOHN BLOEM		
<i>12-11-75</i>	M9301-00003	H
	<i>1 Blo...</i>	<i>9-4-75</i>
JOHN BLOEM		
<i>12-11-75</i>	REDESIGN-00002	F
<i>12-11-75</i>	CHANGE NO.	REV.
REVISIONS		

[illegible]

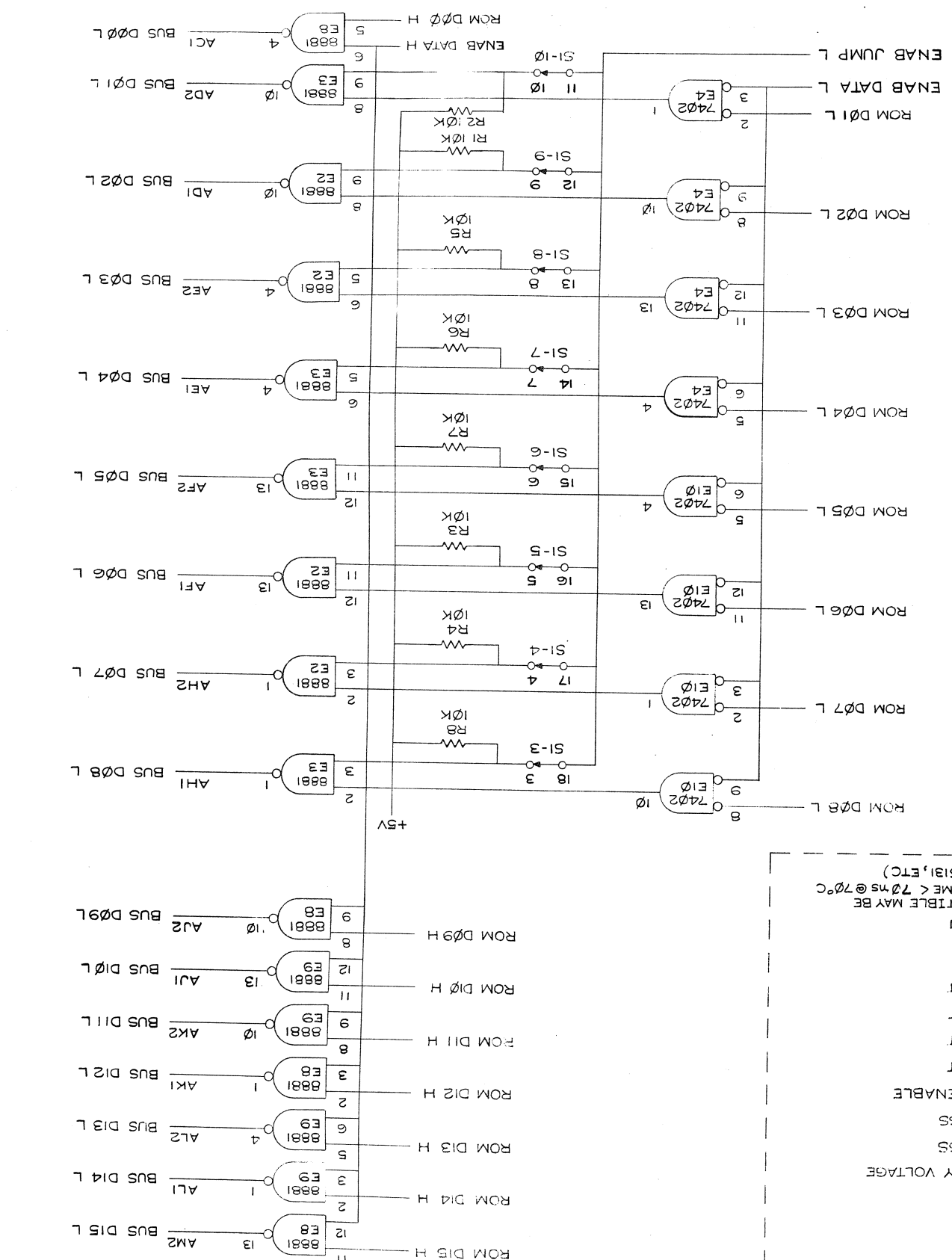
"THIS DRAWING AND SPECIFICATIONS, HEREIN, ARE THE PROPERTY OF DIGITAL EQUIPMENT CORPORATION AND SHALL NOT BE REPRODUCED OR COPIED OR USED IN WHOLE OR IN PART AS THE BASIS FOR THE MANUFACTURE OR SALE OF ITEMS WITHOUT WRITTEN PERMISSION.  
COPYRIGHT © 1975 DIGITAL EQUIPMENT CORPORATION"



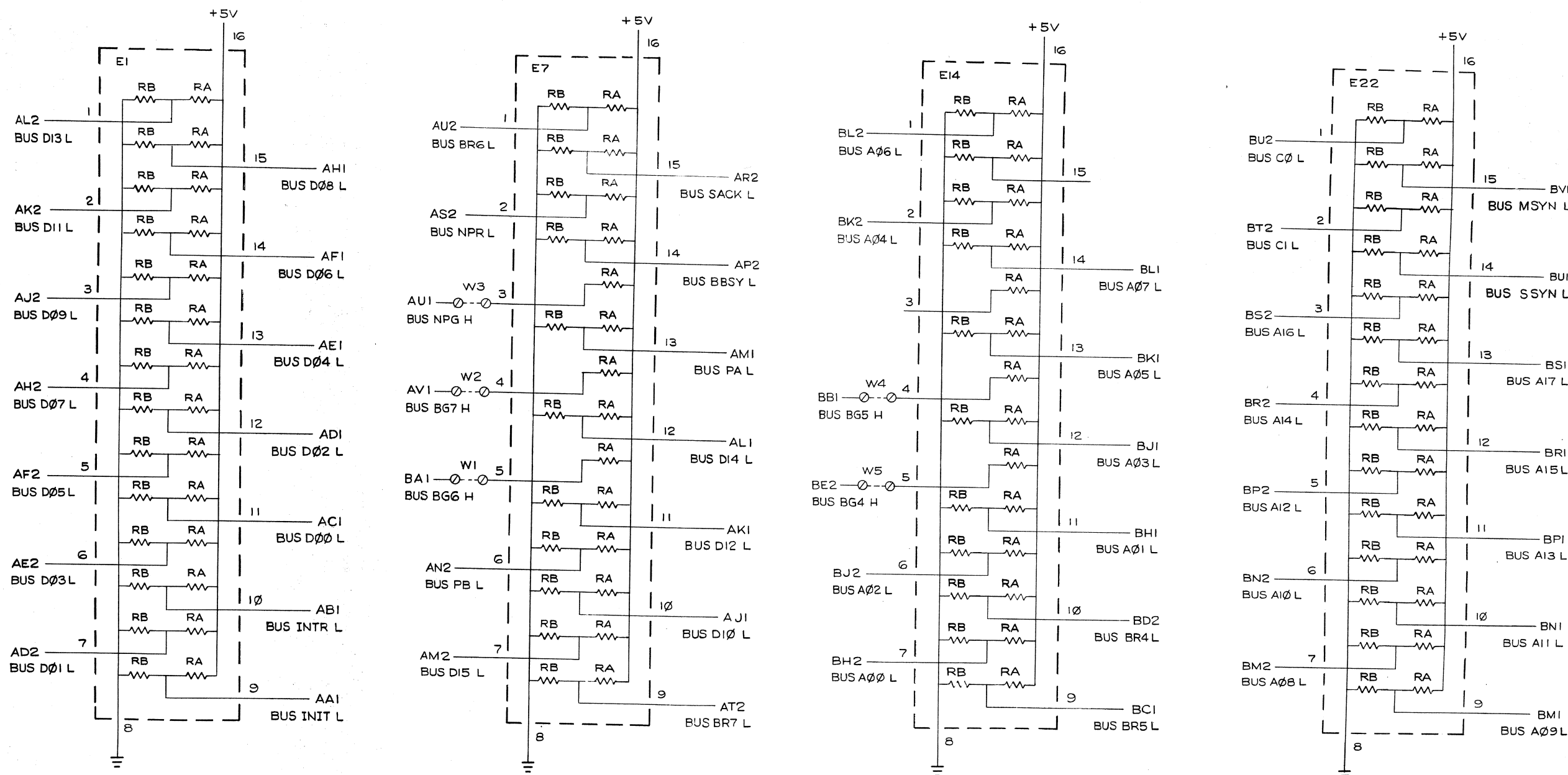
\* ADDRESS BITS A13-A17 ARE DECODED BY E20  
\*\* CAUTION SHOULD BE TAKEN TO GUARANTEE PROPER NOISE FILTERING & LOGIC LEVELS ON THESE INPUTS

REVISIONS		
CHK	CHANGE NO.	REV.

TITLE		UNIBUS	SIZE CODE	NUMBER	REV.
TERMINATOR/BOOTSTRAP		D CS	M9301-0-1	H	
SCALE		SHEET 3 OF 5		DIST.	

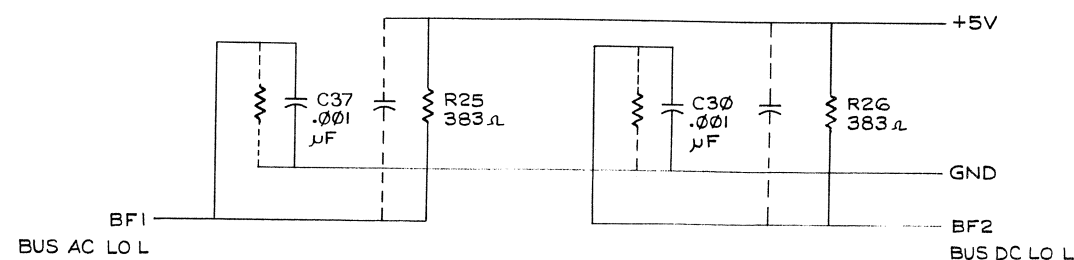


1	2	SIZE	CODE	NUMBER	REV.
		D	CS	M9301-0-1	H



**NOTES:**

1. ALL RA RESISTORS SHOWN ARE  $176.5\Omega, \pm 2\%$
2. ALL RB RESISTORS SHOWN ARE  $375\Omega, \pm 2\%$
3. JUMPERS W1 THRU W5 ARE ONLY INSERTED ON THE M9301-YC.



REVISIONS		
CHK	CHANGE NO.	REV.

TITLE	UNIBUS TERMINATOR/BOOTSTRAP	SIZE CODE	DCS	NUMBER	M9301-0-1	REV.	H
SCALE	1/8"	SHEET	5	OF	5	DIST.	



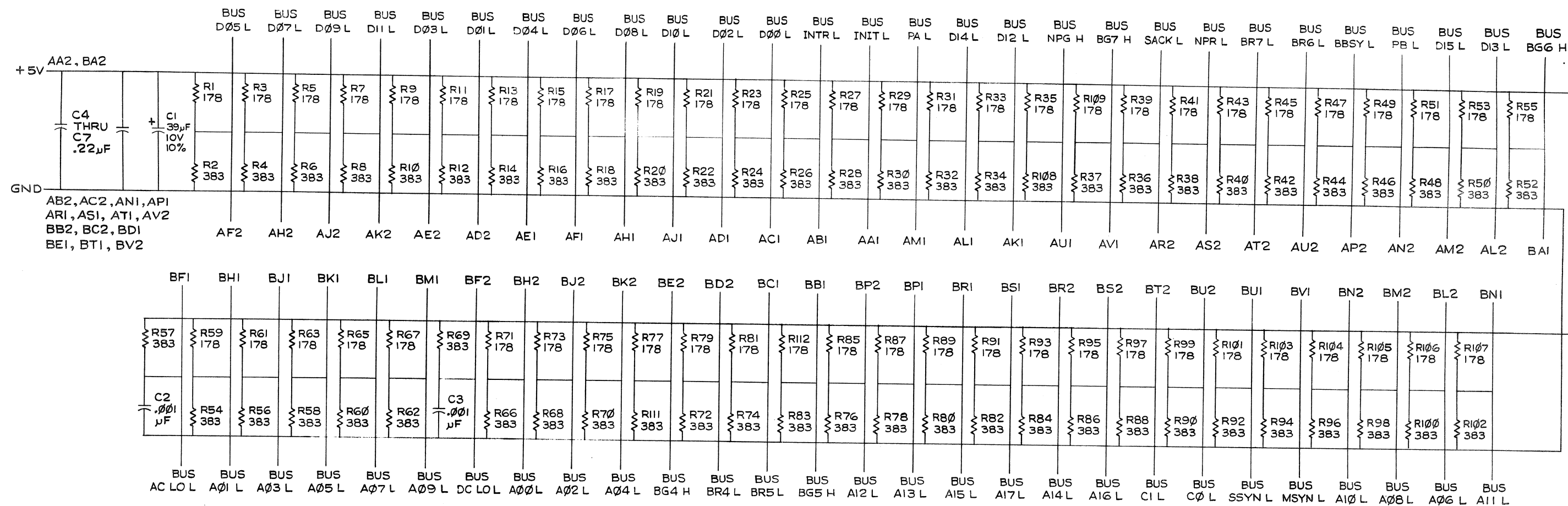
[illegible]

"THIS DRAWING AND SPECIFICATIONS, HEREIN, ARE THE PROPERTY OF DIGITAL EQUIPMENT CORPORATION AND SHALL NOT BE REPRODUCED OR COPIED OR USED IN WHOLE OR IN PART AS THE BASIS FOR THE MANUFACTURE OR SALE OF ITEMS WITHOUT WRITTEN PERMISSION. COPYRIGHT © 1975 DIGITAL EQUIPMENT CORPORATION"

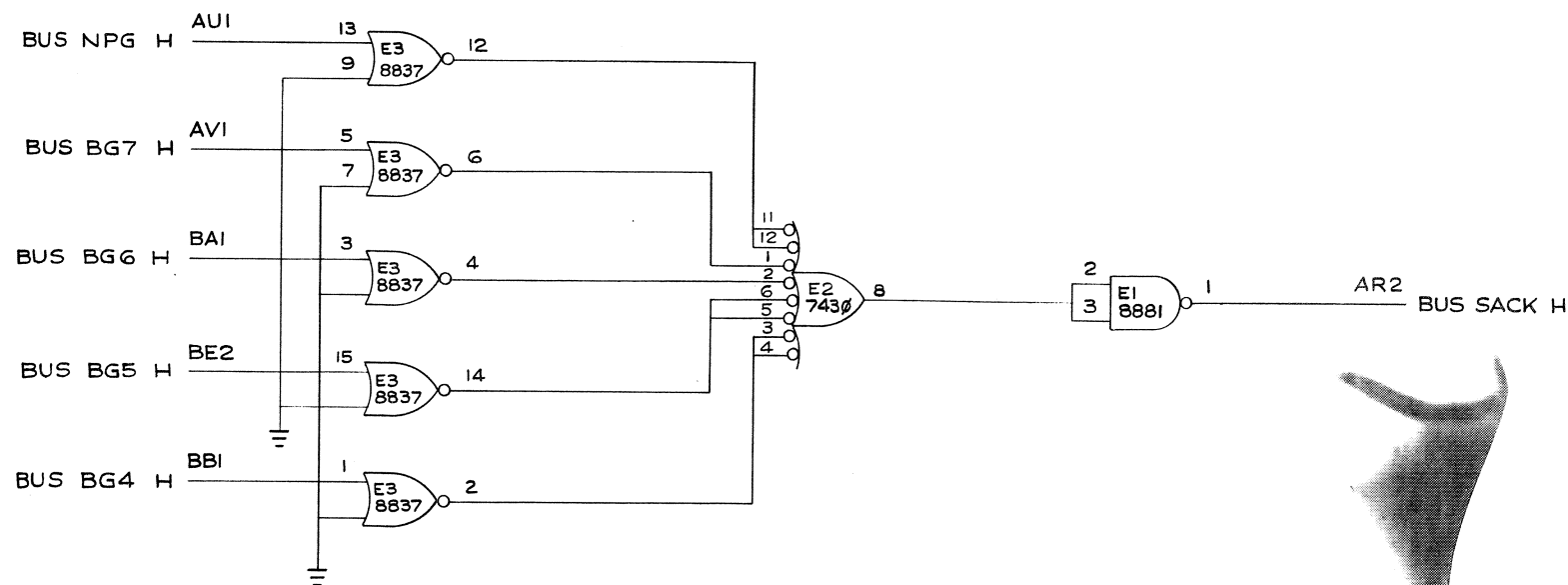
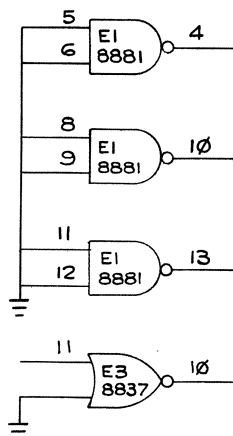
REV. B  
NUMBER M9302-0-1  
SIZE CODE DCS

2

1



# SPARES



REVISIONS		
CHK	CHANGE NO.	REV.

TITLE  
UNIBUS TERMINATOR

SIZE CODE DCS  
NUMBER M9302-0-1

REV. B

SCALE 1/1 SHEET 2 OF 2

DIST.

