

THIS IS PRINT SET

--	--	--	--

SEQUENCE

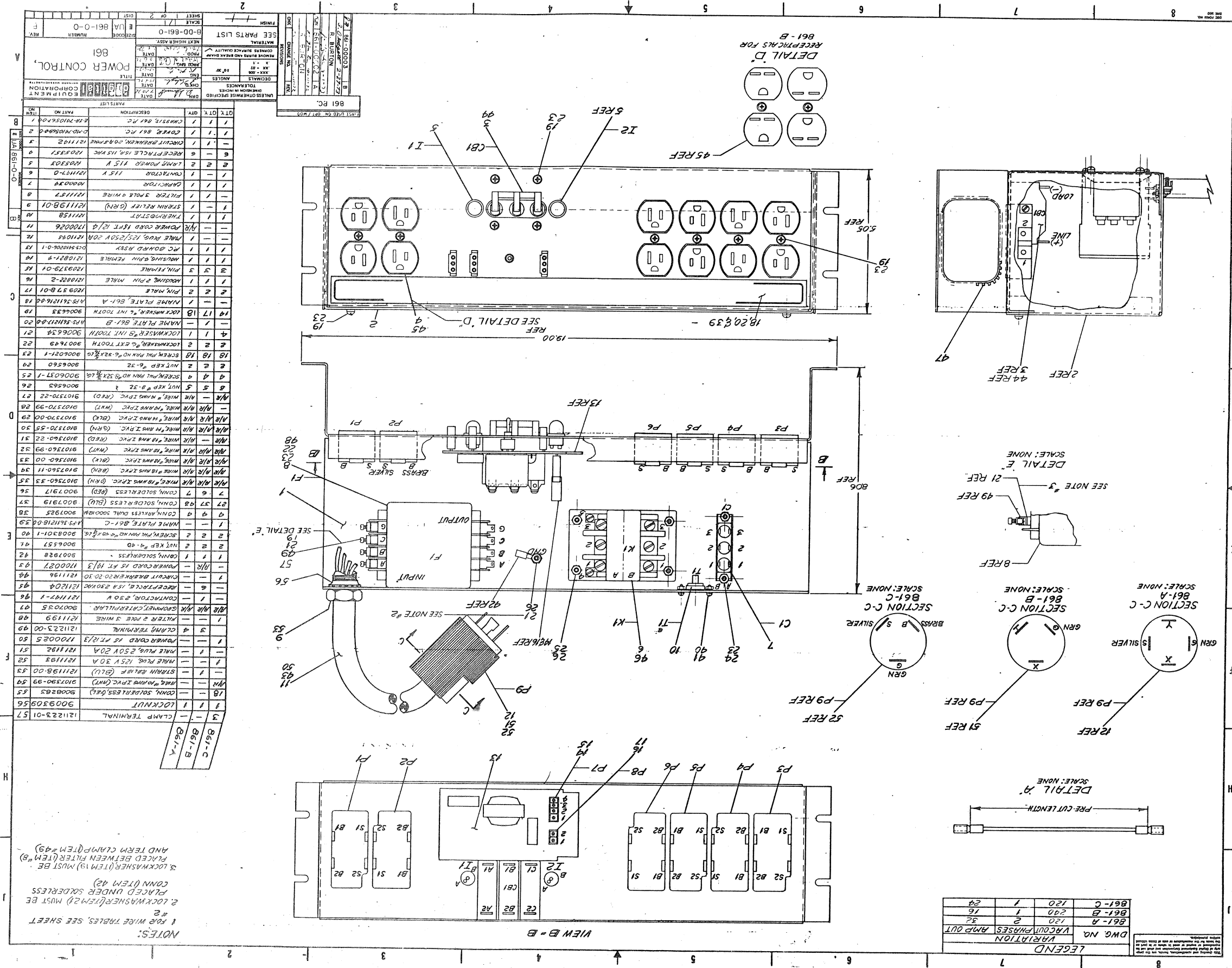
B-DD-861-0
E-UA-861-0-0
D-CS-5410206-0-1
D-CS-861-A-1
D-CS-861-B-1
D-CS-861-C-1
A-PI-3700083-0-0

[illegible]

DEC 16 4 30 PM '73

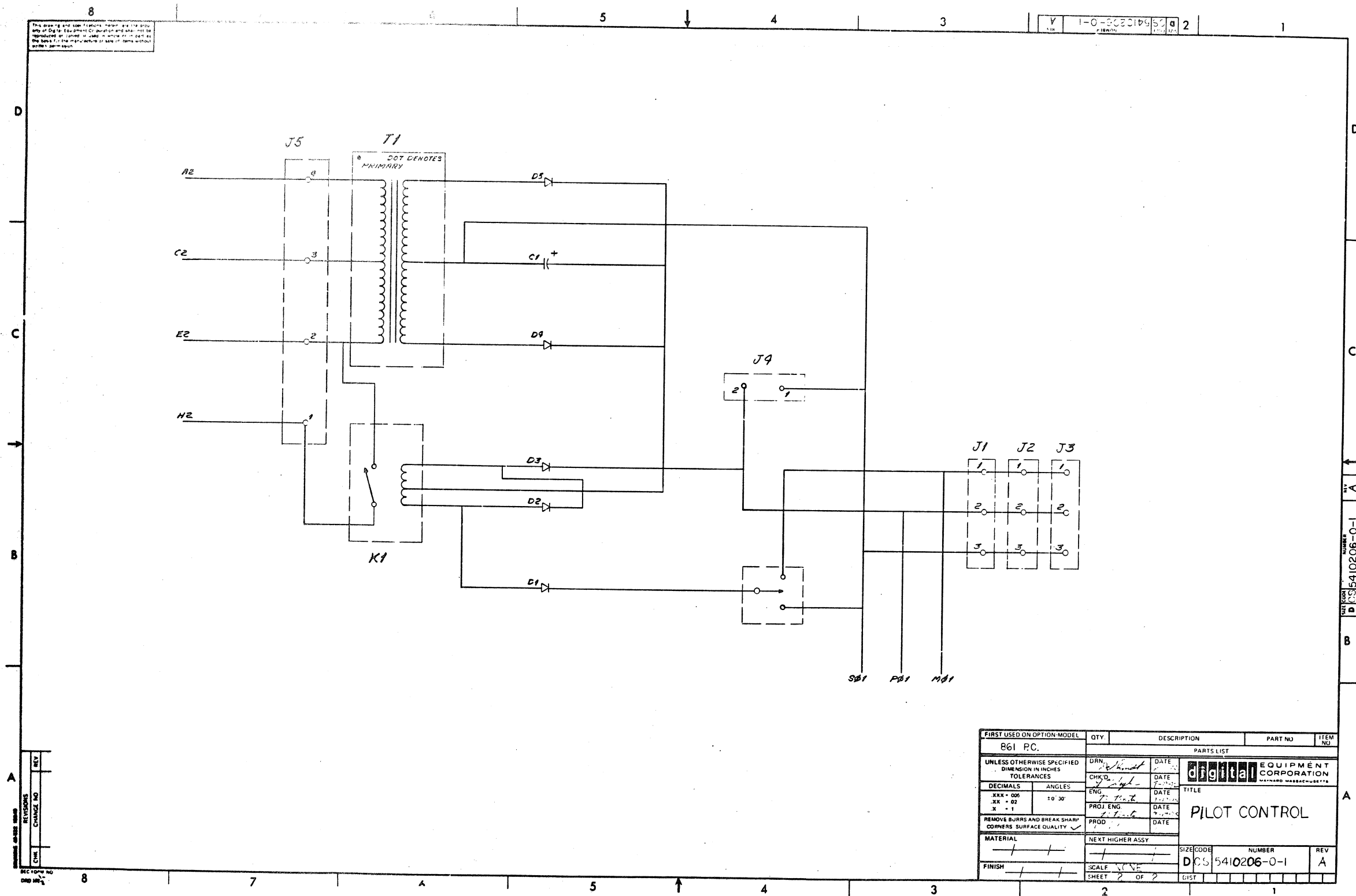
REVISIONS						USED ON OPTION/MODEL	DRN.	DATE	TITLE														
DATE	CHG. NO.	REV		SCHMIDT			9/13/72																
				CHK'D.			DATE																
				B. ALLEN			9/13/72																
				PROJ ENG.			DATE	861 POWER CONTROL															
				JIM KALAGHER			9/13/72																
				PROD.			DATE																
				Fazio Paul			9/25/72	SIZE	CODE	NUMBER								REV					
								B	DD	861-0								B					
								FIELD SERV.	DATE	DIST													
						Paton Irving	9/25/72																
					SHEET 1 OF 3																		

DRB 156

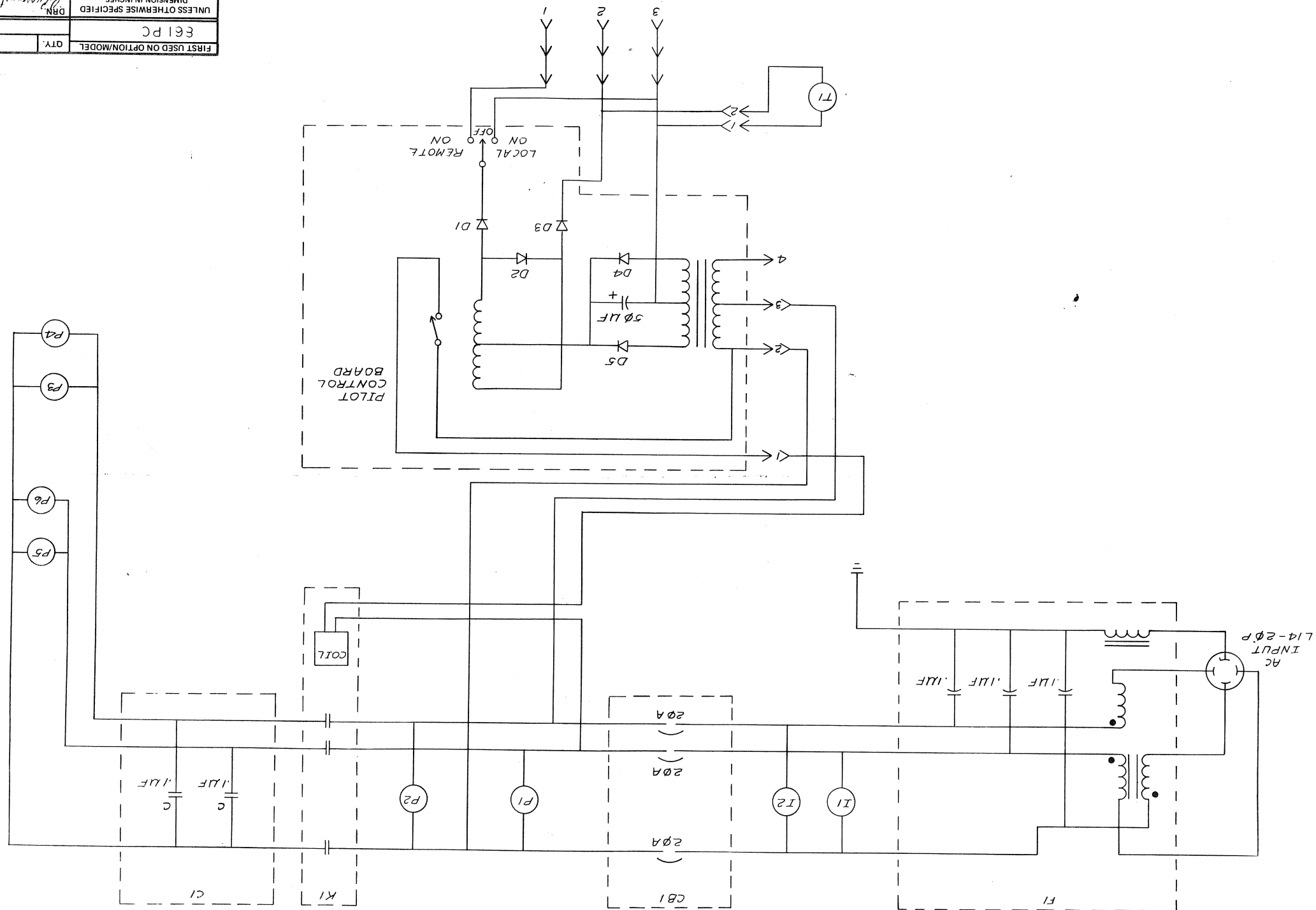


WIRE TABLE 861-A										WIRE TABLE 861-B										WIRE TABLE 861-C												
ITEM NO.	DESCRIPTION	COLOR	AWG	CONN	FROM POINT	TO POINT	WITH	REMARKS	SEE DETAIL A	ITEM NO.	DESCRIPTION	COLOR	AWG	CONN	FROM POINT	TO POINT	WITH	REMARKS	SEE DETAIL A	ITEM NO.	DESCRIPTION	COLOR	AWG	CONN	FROM POINT	TO POINT	WITH	REMARKS	SEE DETAIL A			
29	BLK	14		PI-B2	37	K1-A3	37	12.0		29	BLK	14		PI-B2	37	K1-A3	37	12.0		29	BLK	14		PI-B2	37	K1-A3	37	12.0				
33	BLK	14		PI-A1	36	K1-A5	36	12.0		29	BLK	14		PI-B1	37	P2-B2	37	6.0		33	BLK	14		PI-B1	36	K1-A5	36	12.0				
28	WHT	14		PI-S1	37	K1-S1	37	4.0		28	WHT	14		PI-S1	37	P2-S1	37	4.0		54	WHT	14		PI-S1	55	P2-S1	55	4.0				
28	WHT	14		PI-S2	37	K1-A2	37	12.0		28	WHT	14		PI-S2	37	K1-A2	37	12.0		54	WHT	14		PI-S2	55	K1-A2	55	12.0				
32	WHT	18		P2-S2	36	P1-2	15	10.0		52	WHT	18		P2-S2	36	P1-2	15	10.0		32	WHT	18		P2-S2	36	P1-2	15	10.0				
31	RED	18		P2-B2	36	P1-3	15	10.0		28	WHT	14		P3-S1	37	P4-S2	37	6.0		31	RED	18		P2-B2	36	P1-3	15	10.0				
27	RED	14		P2-B1	37	K1-A1	37	12.0		28	WHT	14		P3-S2	37	C1-A3	37	6.0		27	RED	14		P2-B1	37	K1-A1	37	12.0				
28	WHT	14		P3-S1	37	P4-S2	37	6.0		29	BLK	14		P3-B2	37	P4-B1	37	4.0		54	WHT	14		P3-S1	55	P4-S2	55	6.0				
28	WHT	14		P3-S2	37	C1-A3	37	6.0		28	WHT	14		P4-S1	37	P5-S2	37	4.0		54	WHT	14		P3-S2	55	C1-A3	55	6.0				
27	RED	14		P3-B1	37	P4-B1	37	6.0		28	WHT	14		P5-S1	37	P6-S2	37	6.0		27	RED	14		P4-B1	37	C1-A1	37	4.0				
27	RED	14		P3-B2	37	P4-B1	37	9.0		29	BLK	14		P5-B1	37	P6-S2	37	6.0		27	RED	14		P5-B2	37	P4-B1	37	4.0				
28	WHT	14		P4-S1	37	P5-S2	37	4.0		29	BLK	14		P5-B2	37	P6-B1	37	4.0		54	WHT	10		P5-S1	55	P4-S2	55	4.0				
28	WHT	14		P5-S1	37	P6-S2	37	6.0		29	BLK	14		K1-B3	37	C1-B2	37	4.0		29	BLK	14		P5-B1	37	P6-B1	37	4.0				
29	BLK	14		P5-B1	37	C1-A2	37	6.0		28	WHT	14		K1-B2	37	C1-B3	C	4.0		54	WHT	10		P5-S2	55	P4-S2	55	4.0				
29	BLK	14		P5-B2	37	P6-B1	37	4.0		5	BLK	14		TI-A	—	CB1-B1	LINE +	38		29	BLK	14		P5-B2	37	P6-B1	37	4.0				
29	BLK	14		K1-B3	37	C1-B2	37	4.0		5	BLK	14		TI-B	—	CB1-A1	LINE +	38		29	BLK	14		K1-B3	37	C1-B2	37	4.0				
28	WHT	14		K1-B2	37	C1-B3	C	4.0		5	BLK	14		TI-C	—	CB1-B1	LINE +	38		54	WHT	10		K1-B2	55	C1-B3	C	4.0				
27	RED	14		K1-B1	37	C1-B1	37	4.0		5	BLK	14		TI-A	—	CB1-C1	LINE +	38		27	RED	14		K1-B1	37	C1-B1	37	4.0				
5	BLK	14		TI-A	—	CB1-B1	LINE +	38		29	WHT	14		FI-B	OUTPUT	37	CB1-A1	LINE +	37	6.0	5	BLK	14		TI-A	—	CB1-A1	LINE +	38			
5	BLK	14		TI-B	—	CB1-A1	LINE +	38		28	WHT	14		FI-B	OUTPUT	37	CB1-B1	LINE +	37	6.0	5	BLK	14		TI-B	—	CB1-B1	LINE +	38			
5	BLK	14		TI-C	—	CB1-B1	LINE +	38		29	BLK	14		FI-C	OUTPUT	37	CB1-C1	LINE +	37	6.0	5	BLK	14		TI-C	—	CB1-C1	LINE +	38			
29	BLK	14		FI-C	OUTPUT	37	CB1-A1	LINE +	37	6.0	29	BLK	14		FI-C	OUTPUT	37	CB1-A1	LINE +	37	6.0	29	BLK	14		FI-C	OUTPUT	37	CB1-A1	LINE +	37	6.0
28	WHT	14		FI-B	OUTPUT	37	CB1-B1	LINE +	37	6.0	28	WHT	14		FI-B	OUTPUT	37	CB1-B1	LINE +	37	6.0	28	WHT	14		FI-B	OUTPUT	37	CB1-B1	LINE +	37	6.0
27	RED	14		FI-A	OUTPUT	37	CB1-C1	LINE +	37	6.0	29	BLK	14		FI-A	OUTPUT	37	CB1-C1	LINE +	37	6.0	27	RED	14		FI-A	OUTPUT	37	CB1-C1	LINE +	37	6.0
28	WHT	14		K1-A1	—	CB1-C2	LOAD -	37	6.0	35	ORN	18		P2-B1	17	TI	36	10.0		28	WHT	14		K1-A2	—	CB1-C2	LOAD -	37	6.0			
28	WHT	14		K1-A2	—	CB1-C2	LOAD -	37	6.0	35	ORN	18		P2-B2	17	TI	36	10.0		27	RED	14		K1-A1	—	CB1-C2	LOAD -	37	6.0			
29	BLK	14		K1-A3	—	CB1-A2	LOAD -	37	6.0	33	BLK	18		P2-B1	36	P1-4	15	10.0		54	WHT	10		K1-A2	—	CB1-A2	LOAD -	37	6.0			
30	GRN	14		FI-G	OUTPUT	37	GND	42	6.0	33	BLK	18		K1-A5	36	P1-4	15	10.0		29	BLK	14		K1-A3	—	CB1-A2	LOAD -	37	6.0			
34	BRN	18		K1-A4	36	P1-1	15	10.0		35	GRN	14		P2-B1	36	P1-4	15	10.0		30	GRN	14		FI-G	OUTPUT	37	GND	42	6.0			
35	ORN	18		P2-B1	17	TI	36	10.0		35	GRN	14		P2-B2	36	P1-4	15	10.0		35	ORN	18		P2-B1	17	TI	36	10.0				
35	ORN	18		P2-B2	17	TI	36	10.0		35	GRN	14		P2-B2	36	P1-4	15	10.0		35	ORN	18		P2-B2	17	TI	36	10.0				
11	BLK	12		P3-Y	—	FI-C	INPUT	49		35	ORN	18		P2-B2	36	P1-4	15	10.0		34	BRN	18		K1-A4	36	P1-1	15	10.0				
11	RED	12		P3-X	—	FI-A	INPUT	49		35	ORN	18		P2-B2	36	P1-4	15	10.0		50	BLK	12		P9-B	—	FI-B	INPUT	49				
11	WHT	12		P3-S	—	FI-B	INPUT	49		35	ORN	18		P2-B2	36	P1-4	15	10.0		50	BLK	12		P9-B	—	FI-B	INPUT	49				
11	GRN	12		P3-G	—	FI-G	INPUT	49		29	BLK	14		P4-B2	37	P6-B2	37	6.0		50	WHT	12		P9-S	—	FI-A	INPUT	49				

FIRST USED ON OPTION/MODEL		QTY.	DESCRIPTION	PART NO.	ITEM NO.
861 PC					
UNLESS OTHERWISE SPECIFIED DIMENSION IN INCHES		PARTS LIST			
TOLERANCES		EQUIPMENT CORPORATION			
DECIMALS		C-1212			
ANGLES		TITLE			
XXX - .00		POWER CONTROL, 861			
XX - .02		DATE			
X - .1		DATE			
REMOVE BURRS AND BREAK SHARP CORNERS SURFACE QUALITY		DATE			
MATERIAL		NEXT HIGHER ASSY.			
FINISH		SCALE			
SHEET 2 OF 2		DIST.			



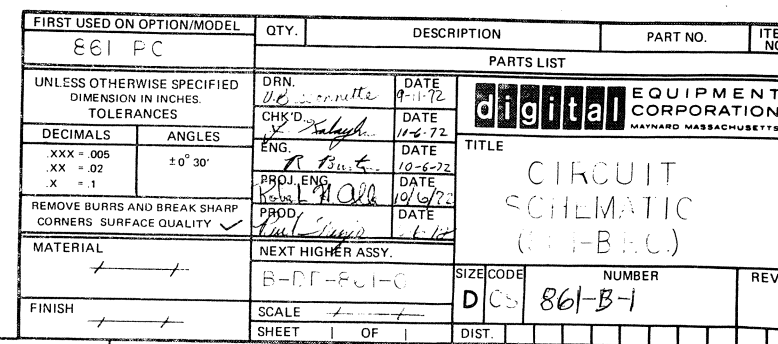
This drawing and specifications, herein, are the property of Digital Equipment Corporation and shall not be reproduced or copied or used in whole or in part as the basis for the manufacture or sale of items without written permission.



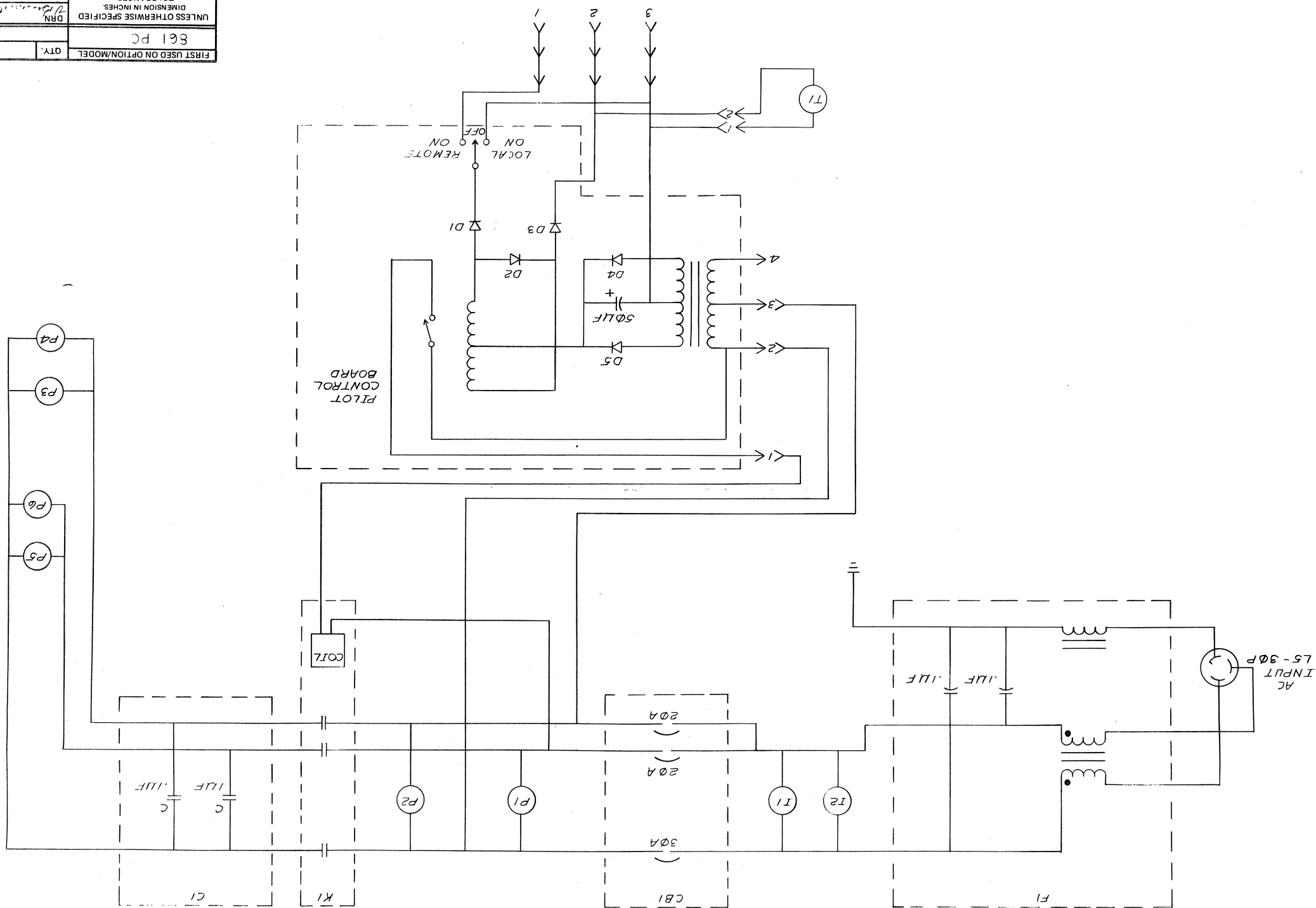
FIRST USED ON OPTION/MODEL		361 PC		UNLESS OTHERWISE SPECIFIED		DIMENSION IN INCHES		TOLERANCES		DECIMALS		$\begin{matrix} .XX = .005 \\ .XX = .02 \\ .X = .1 \end{matrix}$ REMOVE BURNS AND BREAK SHARP CORNERS SURFACE QUALITY ✓		MATERIAL		FINISH											
QTY.		DESCRIPTION		PARTS LIST		DATE		CHK'D		ENG		PROJ ENGR		DATE		NEXT HIGHER ASSY.		B DD-61-1-0		SCALE		SHEET OF		DIST			
ITEM NO.		PART NO.				10-6-72		10-6-72		10-6-72		10-6-72		10-6-72		10-6-72		SIZE CODE		D CS		REV.		NUMBER		CS 861-A-1	
						10-6-72		10-6-72		10-6-72		10-6-72		10-6-72		10-6-72											

2	SIZE D	CODE CS	NUMBER 851-A-1	REV.
---	-----------	------------	-------------------	------

REVISIONS		
CHK	CHANGE NO.	REV.



1	2	SIZE D	CODE CS	NUMBER 861-G-1	REV.
---	---	-----------	------------	-------------------	------



This drawing and specifications, herein, are the property of Digital Equipment Corporation and shall not be reproduced or copied or used in whole or in part as the basis for the manufacture or sale of items without written permission.

DIGITAL EQUIPMENT CORPORATION
MAYNARD MASSACHUSETTS

PACKAGING INSTRUCTION

REV: A DATE: 4-73

TITLE 861 POWER CONTROL, INTERPLANT PACKAGE

MATERIAL REQUIREMENTS

Quantity	Identification No.	Purchase Spec	Description
1	7-2008 1314 0500-0	9905229	Full overlap carton
2		9905228	Expanded polystyrene foam insert
A/R			3-inch wide Glasflex tape

PACKAGING INSTRUCTIONS

Step	Procedure
1	Set up the full over lap carton (9905229) using one strip of tape across the bottom and extending up the sides approximately three inches. See Figure 1.
2	Place one expanded polystyrene foam insert (9905228) in each end of the carton with the slots in the foam facing inward.
3	Place the 861 power control in the carton with the ears of the upright sliding into the slots in the foam.
4	Coil the power cord so that it fits into the cavity in the rear of the power control.
5	Close and seal the carton with one piece of tape across the top of the carton and extending down the sides approximately three inches.

ENG <i>R. J. Collins</i> 4/14/73	APPD <i>Walter Pelt</i>	SIZE <u>A</u>	CODE <u>PI</u>	NUMBER 3700083-0-0	REV <u>A</u>
----------------------------------	-------------------------	---------------	----------------	--------------------	--------------

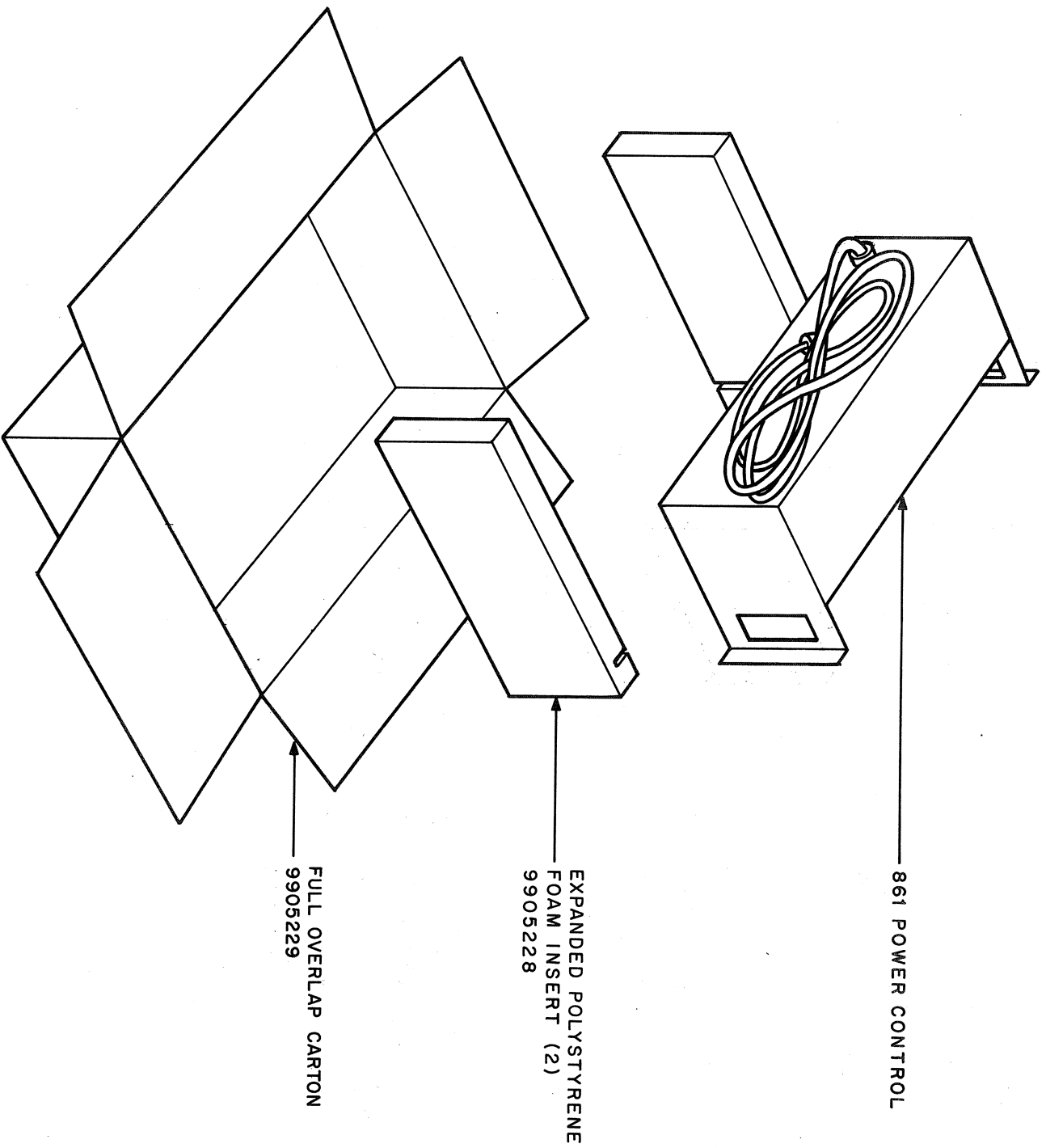
This drawing and specifications, herein, are the property of Digital Equipment Corporation and shall not be reproduced or copied or used in whole or in part as the basis for the manufacture or sale of items without written permission.

PACKAGING INSTRUCTION

TITLE 861 POWER CONTROL, INTERPLANT PACKAGE

REV: A DATE: 4/73

FIGURE 1



NOTE
Make changes to the "C" size original only and rephotograph.

ENG.	APPD.	SIZE	CODE	NUMBER	REV
willard M Patton 12/11/72	J W Lawrence 12/11/72	A	PI	3700083-0-0	A

DRC-107