

THIS IS PRINT SET

--	--	--	--

SEQUENCE

B-DD-861-0
E-UA-861-0-0
D-CS-5410206-0-1
D-CS-861-A-1
D-CS-861-B-1
D-CS-861-C-1
A-PI-3700083-0-0

[illegible]


DEC 16 4 30 PM '72

REVISIONS			
DATE	CHG. NO.	REV	
2/73	861-3	A	
8/74	861-4	B	

USED ON OPTION/MODEL		DRN.	DATE	TITLE									
		SCHMIDT	9/13/72										
		CHK'D.	DATE										
		B. ALLEN	9/13/72										
		PROJ ENG.	DATE	861 POWER CONTROL									
		JIM KALAGHER	9/13/72										
		PROD.	DATE										
		Fazio Paul	9/25/72										
		FIELD SERV.	DATE	SIZE	CODE	NUMBER						REV	
SHEET 1 OF 3		Paton Irving	9/25/72	B	DD	861-0						B	
				DIST									

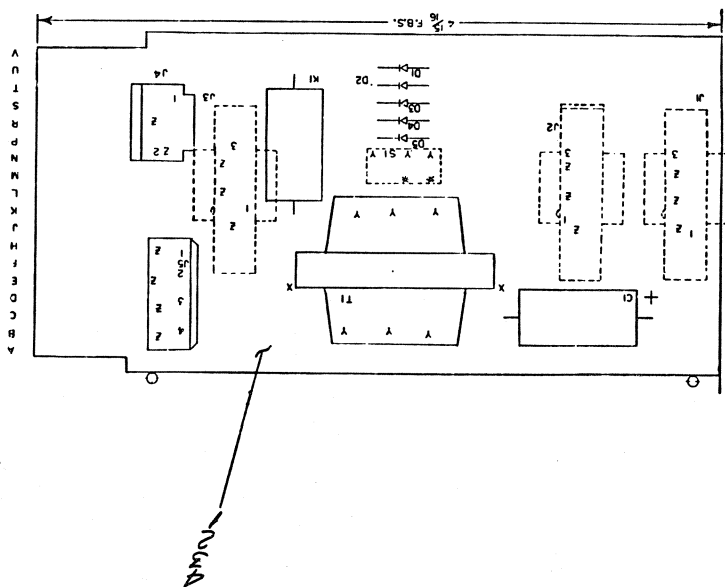
DRB 106

WIRE TABLE 861-A										WIRE TABLE 861-B										WIRE TABLE 861-C																	
ITEM	DESCRIPTION	NO.	COLOR	AWG	CONN	FROM POINT	TO POINT	WITH	REMARKS	ITEM	DESCRIPTION	NO.	COLOR	AWG	CONN	FROM POINT	TO POINT	WITH	REMARKS	ITEM	DESCRIPTION	NO.	COLOR	AWG	CONN	FROM POINT	TO POINT	WITH	REMARKS								
29	BLK 14	PL-B2	37	KL-A3		37	KL-A3		12.0	29	BLK 14	PL-B2	37	KL-A3		37	KL-A3		12.0	29	BLK 14	PL-B2	37	KL-A3		37	KL-A3		12.0								
33	BLK 14	PL-B1	36	KL-A5		36	KL-A5		12.0	29	BLK 14	PL-B1	37	KL-A5		37	KL-A5		12.0	29	BLK 14	PL-B1	36	KL-A5		36	KL-A5		12.0								
28	WHT 14	PL-S1	37	KL-A1		37	KL-A1		4.0	28	WHT 14	PL-S1	37	KL-A1		37	KL-A1		4.0	28	WHT 14	PL-S1	37	KL-A1		37	KL-A1		4.0								
28	WHT 14	PL-S2	37	KL-A2		37	KL-A2		12.0	28	WHT 14	PL-S2	37	KL-A2		37	KL-A2		12.0	28	WHT 14	PL-S2	37	KL-A2		37	KL-A2		12.0								
32	WHT 18	PL-S2	36	PL-2		15	10.0			32	WHT 18	PL-S2	36	PL-2		15	10.0			32	WHT 18	PL-S2	36	PL-2		15	10.0										
31	RED 18	PL-B2	36	PL-3		15	10.0			28	WHT 14	PL-S1	37	KL-A3		37	KL-A3		6.0	27	RED 14	PL-B1	36	PL-3		36	PL-3		10.0								
27	RED 14	PL-B1	37	KL-A1		37	KL-A1		12.0	28	WHT 14	PL-S2	37	KL-A3		37	KL-A3		6.0	27	RED 14	PL-B1	36	PL-3		36	PL-3		10.0								
28	WHT 14	PL-S1	37	PL-S2		37	PL-S2		6.0	29	BLK 14	PL-B2	37	PL-B1		37	PL-B1		4.0	27	RED 14	PL-B1	36	PL-3		36	PL-3		10.0								
28	WHT 14	PL-S2	37	CL-A1		37	CL-A1		6.0	28	WHT 14	PL-S1	37	PL-S2		37	PL-S2		4.0	28	WHT 14	PL-S1	37	PL-S2		37	PL-S2		6.0								
27	RED 14	PL-B1	37	CL-A1		37	CL-A1		6.0	28	WHT 14	PL-S2	37	PL-S2		37	PL-S2		6.0	27	RED 14	PL-B1	36	PL-3		36	PL-3		10.0								
27	RED 14	PL-B2	37	PL-B1		37	PL-B1		9.0	29	BLK 14	PL-B1	37	PL-S2		37	PL-S2		6.0	27	RED 14	PL-B1	36	PL-3		36	PL-3		10.0								
28	WHT 14	PL-S1	37	PL-S2		37	PL-S2		4.0	29	BLK 14	PL-B2	37	PL-B1		37	PL-B1		4.0	28	WHT 14	PL-S1	37	PL-S2		37	PL-S2		6.0								
28	WHT 14	PL-S2	37	PL-S2		37	PL-S2		6.0	29	BLK 14	PL-B1	37	PL-B2		37	PL-B2		4.0	28	WHT 14	PL-S1	37	PL-S2		37	PL-S2		6.0								
29	BLK 14	PL-B1	37	CL-A2		37	CL-A2		6.0	28	WHT 14	PL-S1	37	CL-B3		37	CL-B3		4.0	29	BLK 14	PL-B1	37	CL-A2		37	CL-A2		6.0								
29	BLK 14	PL-B2	37	PL-B1		37	PL-B1		4.0	5	BLK 14	PL-B1	—	CL-B1		—	CL-B1		38	—	29	BLK 14	PL-B2	37	CL-B3		37	CL-B3		4.0							
28	WHT 14	PL-S1	37	CL-B2		37	CL-B2		4.0	5	BLK 14	PL-B2	—	CL-B1		—	CL-B1		38	—	29	BLK 14	PL-B1	37	CL-B3		37	CL-B3		4.0							
27	RED 14	PL-B1	37	CL-B3		37	CL-B3	C	4.0	5	BLK 14	PL-B2	—	CL-B1		—	CL-B1		38	—	29	BLK 14	PL-B2	37	CL-B3		37	CL-B3	C	4.0							
27	RED 14	PL-B1	37	CL-B1		37	CL-B1		4.0	5	BLK 14	PL-B1	—	CL-B1		—	CL-B1		38	—	27	RED 14	PL-B1	36	CL-B3		36	CL-B3		4.0							
5	BLK 14	PL-B1	—	CL-B1		—	CL-B1	LINE +	38	—	29	BLK 14	PL-B2	—	CL-B1		—	CL-B1		38	—	5	BLK 14	PL-B1	—	CL-B1		—	CL-B1	LINE +	38						
5	BLK 14	PL-B2	—	CL-B1		—	CL-B1	LINE +	38	—	29	BLK 14	PL-B1	—	CL-B1		—	CL-B1		38	—	5	BLK 14	PL-B2	—	CL-B1		—	CL-B1	LINE +	38						
5	BLK 14	PL-B1	—	CL-B1		—	CL-B1	LINE +	38	—	28	WHT 14	PL-S1	—	CL-B1		—	CL-B1		38	—	5	BLK 14	PL-B1	—	CL-B1		—	CL-B1	LINE +	38						
5	BLK 14	PL-B2	—	CL-B1		—	CL-B1	LINE +	38	—	28	WHT 14	PL-S2	—	CL-B1		—	CL-B1		38	—	5	BLK 14	PL-B2	—	CL-B1		—	CL-B1	LINE +	38						
29	BLK 14	PL-B1	37	CL-B1		37	CL-B1	LINE +	37	6.0	29	BLK 14	PL-B2	37	CL-B1		37	CL-B1		37	6.0	29	BLK 14	PL-B1	37	CL-B1		37	CL-B1	LINE +	37	6.0					
28	WHT 14	PL-B2	37	CL-B1		37	CL-B1	LINE +	37	6.0	28	WHT 14	PL-S1	37	CL-B1		37	CL-B1		37	6.0	28	WHT 14	PL-B2	37	CL-B1		37	CL-B1	LINE +	37	6.0					
27	RED 14	PL-B1	37	CL-B1		37	CL-B1	LINE +	37	6.0	28	WHT 14	PL-S2	37	CL-B1		37	CL-B1		37	6.0	27	RED 14	PL-B1	36	CL-B1		36	CL-B1	LINE +	37	6.0					
28	WHT 14	PL-S1	37	CL-B2		37	CL-B2	LOAD -	37	6.0	29	BLK 14	PL-B1	37	CL-B2		37	CL-B2		37	6.0	28	WHT 14	PL-S1	37	CL-B2		37	CL-B2	LOAD -	37	6.0					
29	BLK 14	PL-B2	37	CL-B2		37	CL-B2	LOAD -	37	6.0	28	WHT 14	PL-S2	37	CL-B2		37	CL-B2		37	6.0	29	BLK 14	PL-B2	37	CL-B2		37	CL-B2	LOAD -	37	6.0					
30	GRN 14	PL-G	37	CL-B2		37	CL-B2	LOAD -	37	6.0	29	BLK 14	PL-B2	37	CL-B2		37	CL-B2		37	6.0	30	GRN 14	PL-G	37	CL-B2		37	CL-B2	LOAD -	37	6.0					
34	BRN 18	PL-A9	36	PL-A1		36	PL-A1		4.0	23	GRN 14	PL-G	36	PL-A9		36	PL-A9		4.0	34	BRN 18	PL-A9	36	PL-A1		36	PL-A1		4.0	23	GRN 14	PL-G	36	PL-A9		4.0	
33	ORN 18	PL-B1	17	TI		17	TI		36	10.0	43	BLK 14	PL-B1	17	TI		17	TI		36	10.0	33	ORN 18	PL-B1	17	TI		17	TI		36	10.0					
35	ORN 18	PL-B2	17	TI		17	TI		36	10.0	43	WHT 14	PL-B2	17	TI		17	TI		36	10.0	35	ORN 18	PL-B2	17	TI		17	TI		36	10.0					
11	BLK 12	PL-B1	—	PL-B1		—	PL-B1	INPUT	49	—	29	BLK 14	PL-B2	37	PL-B2		37	PL-B2		6.0	34	BRN 18	PL-A9	36	PL-A1		36	PL-A1		4.0	23	GRN 14	PL-G	36	PL-A9		4.0
11	RED 12	PL-B2	—	PL-B1		—	PL-B1	INPUT	49	—	29	BLK 14	PL-B1	37	PL-B2		37	PL-B2		6.0	30	GRN 14	PL-G	36	PL-A9		36	PL-A9		4.0	23	GRN 14	PL-G	36	PL-A9		4.0
11	WHT 12	PL-B3	—	PL-B1		—	PL-B1	INPUT	49	—	29	BLK 14	PL-B2	37	PL-B2		37	PL-B2		6.0	30	GRN 14	PL-G	36	PL-A9		36	PL-A9		4.0	23	GRN 14	PL-G	36	PL-A9		4.0
11	GRN 12	PL-B3	—	PL-B1		—	PL-B1	INPUT	49	—	29	BLK 14	PL-B2	37	PL-B2		37	PL-B2		6.0	30	GRN 14	PL-G	36	PL-A9		36	PL-A9		4.0	23	GRN 14	PL-G	36	PL-A9		4.0

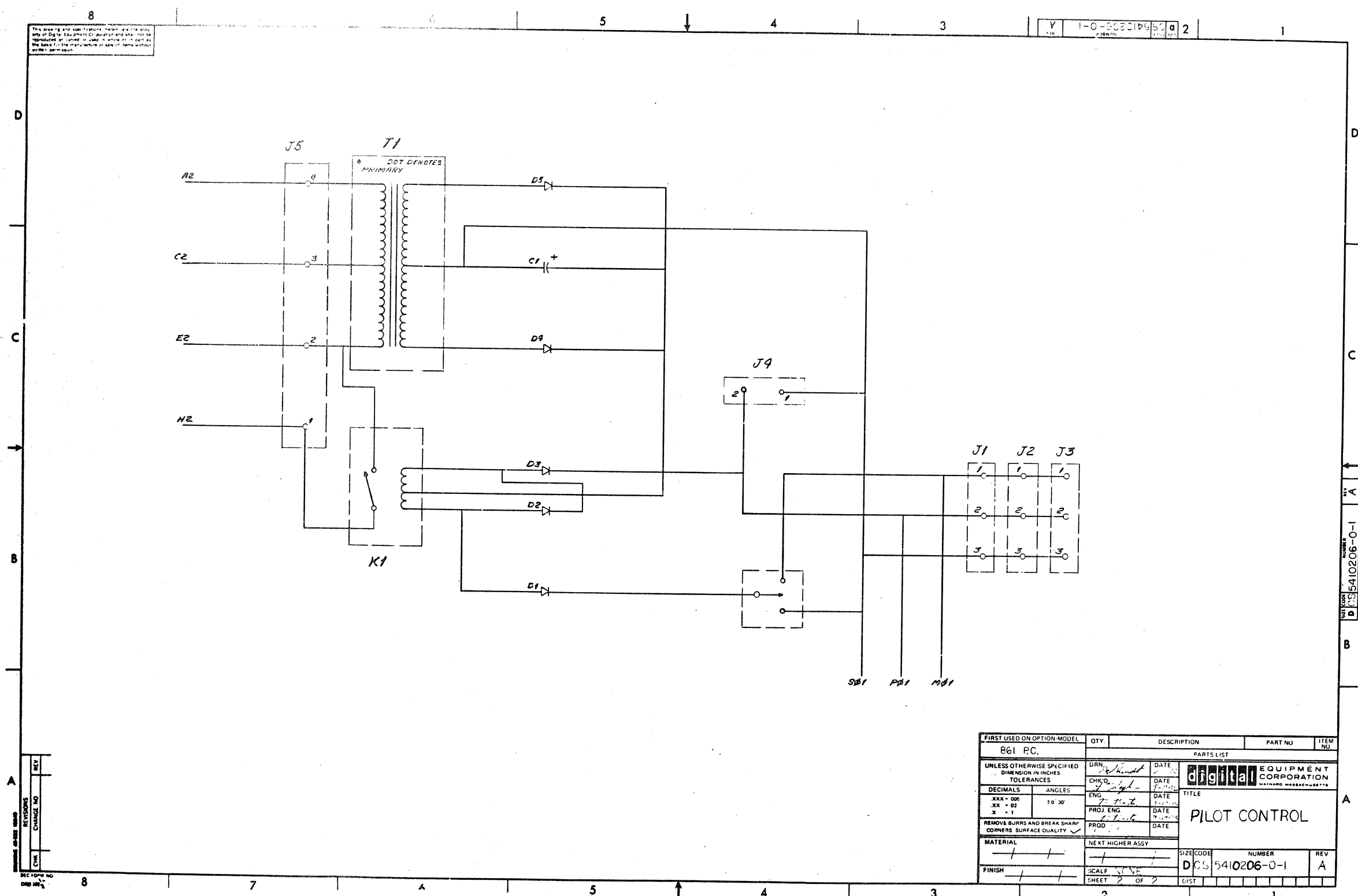
FIRST USED ON OPTION/MODEL		QTY.	DESCRIPTION	PART NO.	ITEM NO.
861 PC					
UNLESS OTHERWISE SPECIFIED DIMENSIONS IN INCHES TOLERANCES			PARTS LIST		
DECIMAL ANGLES .XXX = .006 30° 30' .XX = .02 30° 30' .X = .01 30° 30'		DRN <i>Hand</i> DATE <i>7-1-72</i> CHKD <i>JS</i> DATE <i>7-1-72</i> INC. DATE <i>7-1-72</i> TOL EMP. DATE <i>7-1-72</i> JKD DATE <i>7-1-72</i>	 EQUIPMENT CORPORATION 300 N. MAIN STREET CAMBRIDGE, MASSACHUSETTS 02142		
REMOVE BURRS AND BREAK SHARP CORNERS. SURFACE QUALITY		POWER CONTROL, 861			
MATERIAL		NEXT HIGHER ASSY.		SIZE CODE	NUMBER
FINISH		SCALE		EU A	861-0-0
SHEET 22 OF 22		DIST.		REV.	B

[illegible][illegible]

PARTS LIST		REF BOARD REV		861 PC.	
PARTS LIST		REF BOARD REV		861 PC.	
QTY	REF DESIGNATION	DESCRIPTION	PART NO.	QTY	REF
1	S1	SWITCH, 3-POS	12-11132	19	
1	K1	RELAY, REED	12-111179	13	
1	T1	PC TRANSFORMER	16-11173	12	
4	FOR USE ON J5	PIN, PC MATE WHITE-N-LOCK	1210883	11	
1	J9	SOCKET, 2 PIN MATE-N-LOCK	1210932-02	10	
11	FOR USE ON J3-J4	PIN, PC FEMALE WHITE-N-LOCK	1209596	9	
1	J5	PLUG, 2 PIN WHITE-N-LOCK	1203351-04	9	
3	J1, J2, J3	SOCKET, 3 PIN WHITE-N-LOCK	1203350-03	7	
5	D1-D5	DIPIDE 1N 4004	1105796	6	
1	C1	CAP, 500UF 50V 6% AL EL	1000030	5	
REF		MODULE ECO HIGH DENSITY	23-154-54-1000000-6-5	4	
REF		ASSY DRILLING HOLE 1/8" DIA	23-154-54-1000000-6-5	3	
REF		X-Y COORDINATE HOLE LOC	KC-1-54-1000000-6-5	2	
1		ETC CRT BOARD	50-00305	1	

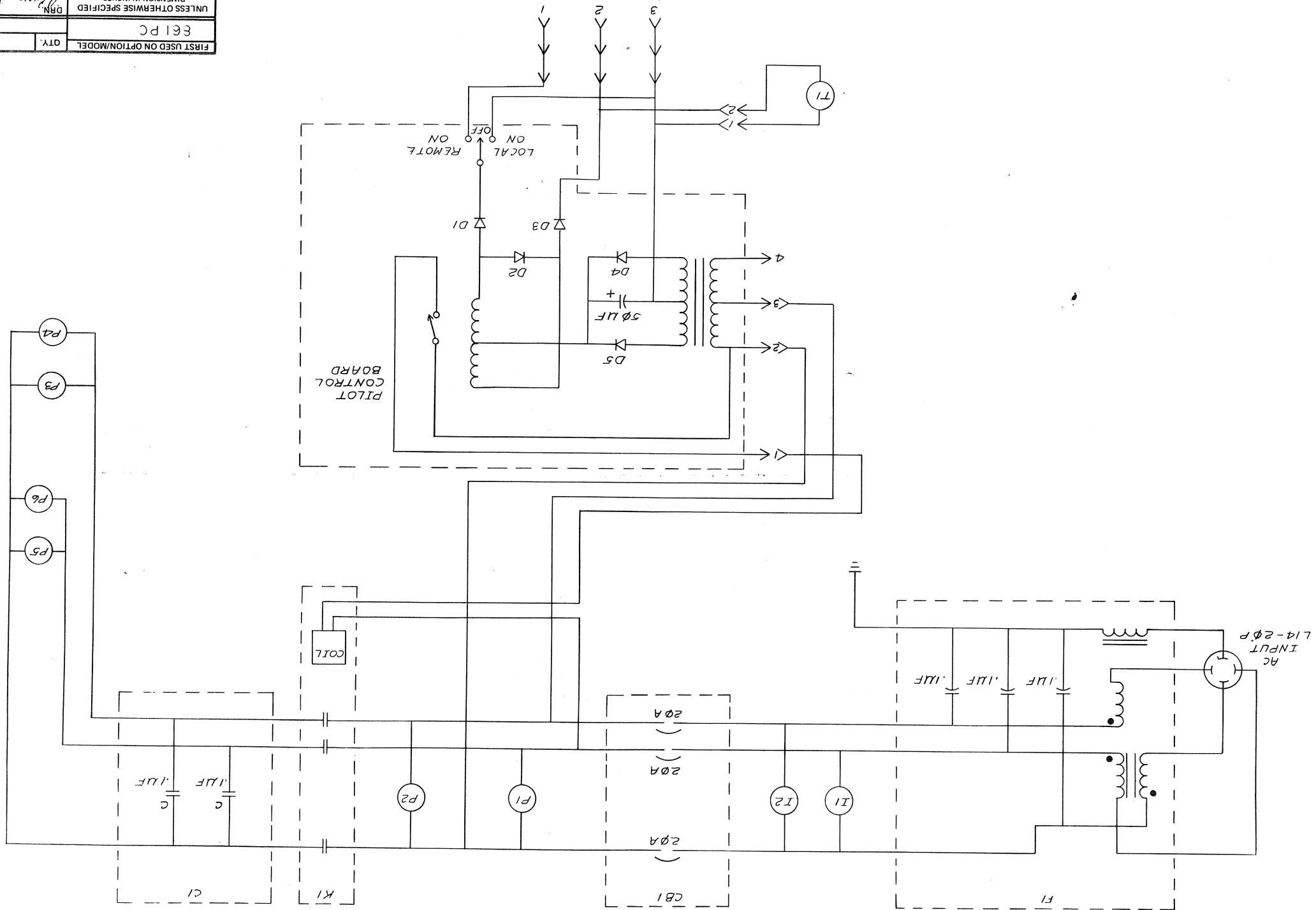


NOTES:



FORM 100-A	REV	CHANGE NO	REVISIONS
CHK			

THIS DRAWING AND SPECIFICATIONS, HEREIN, ARE THE PROPERTY OF DIGITAL EQUIPMENT CORPORATION AND SHALL NOT BE REPRODUCED OR COPIED IN WHOLE OR IN PART AS THE BASIS FOR THE MANUFACTURE OF ANY EQUIPMENT WITHOUT WRITTEN PERMISSION.

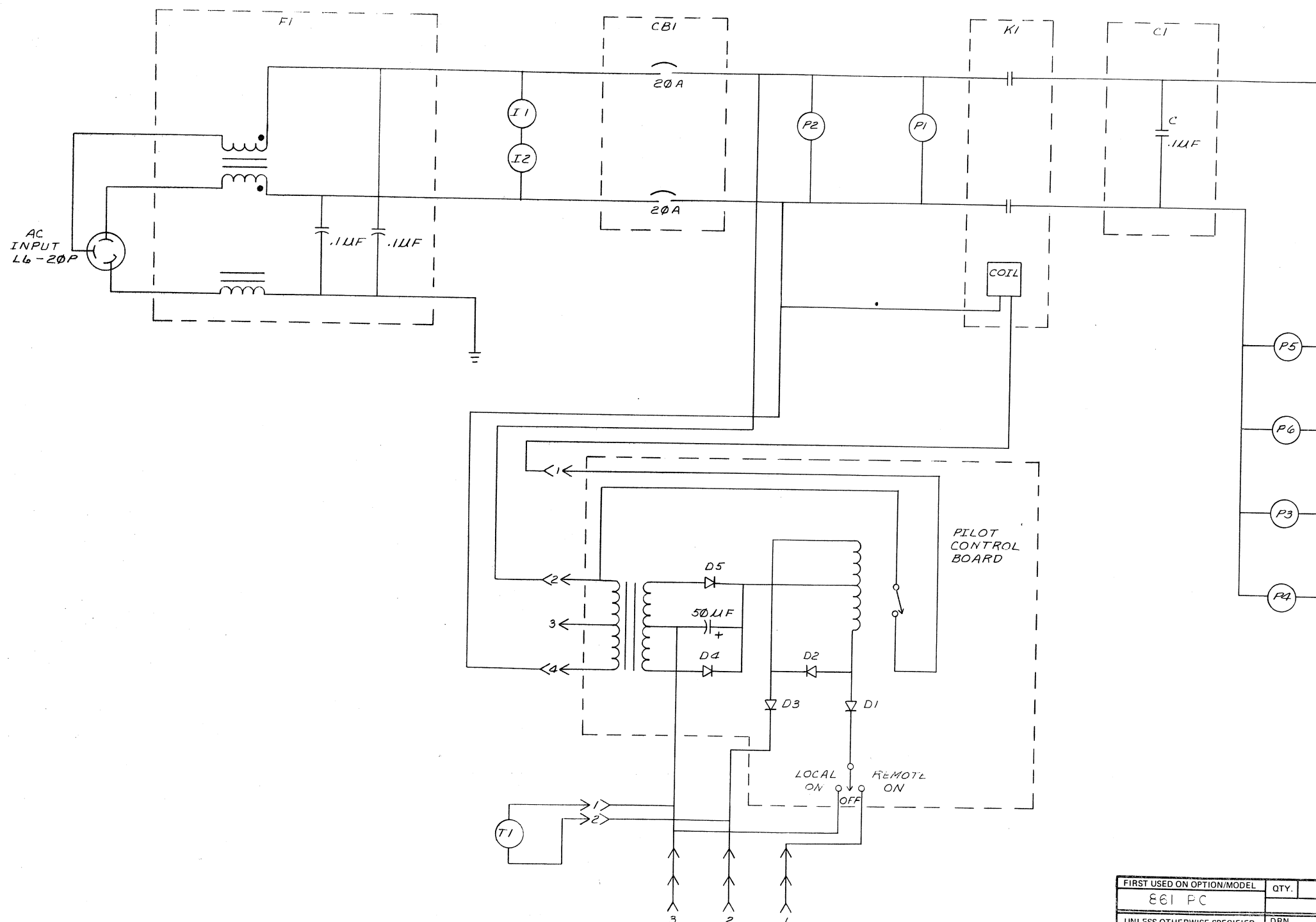


FIRST USED ON OPTION/MODEL		QTY		DESCRIPTION		PART NO.		ITEM NO.	
661 PC									
UNLESS OTHERWISE SPECIFIED		DIMENSION IN INCHES		TOLERANCES		DECIMALS		ANGLES	
X = .1		X.X = .02		X.XX = .005		X.XXX = .001		X.XXXX = .0005	
REMOVE BURNS AND BREAK SHARP CORNERS SURFACE QUALITY		PROOF		DATE		ENG		DATE	
NEXT HIGHER ASSY		B DD-61-1-0		SCALE		SHEET		OF	
FINISH		B DD-61-1-0		SCALE		SHEET		OF	
MATERIAL		B DD-61-1-0		SCALE		SHEET		OF	
SIZE CODE		D		SIZE CODE		D		SIZE CODE	
REV		REV		REV		REV		REV	
NUMBER		861-A-1		NUMBER		861-A-1		NUMBER	
TITLE		CIRCUIT (661-PC)		TITLE		CIRCUIT (661-PC)		TITLE	
CORPORATION		DIGITAL EQUIPMENT CORPORATION		CORPORATION		DIGITAL EQUIPMENT CORPORATION		CORPORATION	
REVISIONS		REVISIONS		REVISIONS		REVISIONS		REVISIONS	
CHANGE NO		CHANGE NO		CHANGE NO		CHANGE NO		CHANGE NO	
REV		REV		REV		REV		REV	

SIZE CODE	NUMBER	REV
D	861-A-1	

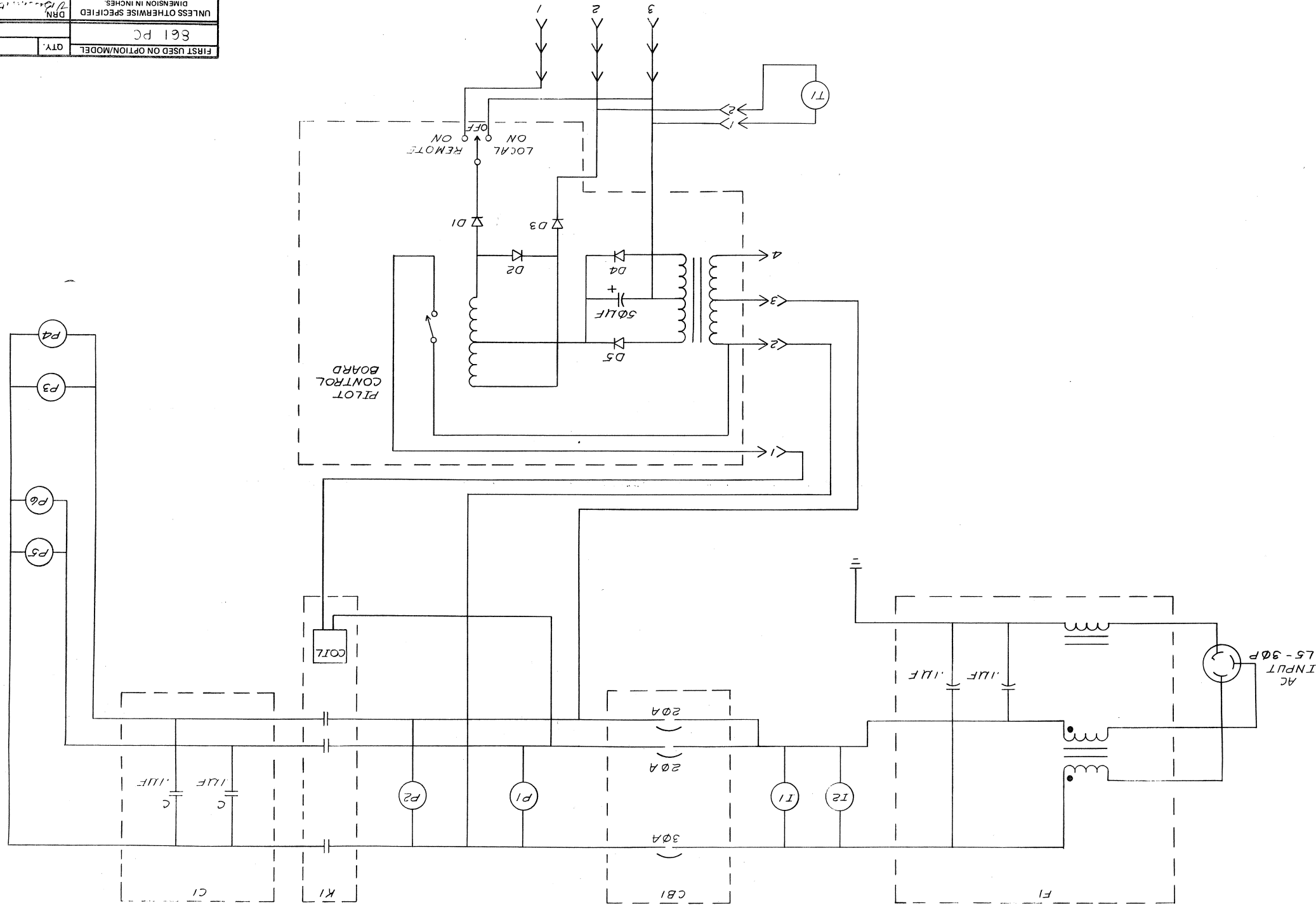
REV	NUMBER	SIZE CODE
	1-A-100	D

This drawing and specifications, herein, are the property of Digital Equipment Corporation and shall not be reproduced or copied or used in whole or in part as the basis for the manufacture or sale of items without written permission.



FIRST USED ON OPTION/MODEL		QTY.	DESCRIPTION	PART NO.	ITEM NO.
861 PC					
UNLESS OTHERWISE SPECIFIED DIMENSION IN INCHES. TOLERANCES		DRN. CHK'D. ENG. PROJ. ENG. PROD.	DATE 9-11-72 11-6-72 10-6-72 10/6/72	PARTS LIST digital EQUIPMENT CORPORATION MAYNARD, MASSACHUSETTS	
DECIMALS .005 .XX .02 .X .1		ANGLES ±0° 30'		TITLE CIRCUIT SCHEMATIC (861-B-1)	
REMOVE BURRS AND BREAK SHARP CORNERS SURFACE QUALITY		NEXT HIGHER ASSY. B-01-801-0		SIZE CODE D CS	
MATERIAL FINISH		SCALE SHEET OF		NUMBER 861-B-1	
		DIST.		REV.	

FIRST USED ON OPTION/MODEL		861 PC	
QTY.	DESCRIPTION	PART NO.	ITEM NO.
PARTS LIST			



This drawing and specifications, herein, are the property of Digital Equipment Corporation and shall not be reproduced or copied or used in whole or in part as the basis for the manufacture or sale of items without written permission.

DIGITAL EQUIPMENT CORPORATION MAYNARD MASSACHUSETTS				
PACKAGING INSTRUCTION			REV: <u>A</u>	DATE: <u>4-73</u>
TITLE 861 POWER CONTROL, INTERPLANT PACKAGE				
MATERIAL REQUIREMENTS				
Quantity	Identification No.	Purchase Spec	Description	
1	7-2008 1314 0500-0	9905229	Full overlap carton	
2		9905228	Expanded polystyrene foam insert	
A/R			3-inch wide Glasflex tape	
PACKAGING INSTRUCTIONS				
Step	Procedure			
1	Set up the full over lap carton (9905229) using one strip of tape across the bottom and extending up the sides approximately three inches. See Figure 1.			
2	Place one expanded polystyrene foam insert (9905228) in each end of the carton with the slots in the foam facing inward.			
3	Place the 861 power control in the carton with the ears of the upright sliding into the slots in the foam.			
4	Coil the power cord so that it fits into the cavity in the rear of the power control.			
5	Close and seal the carton with one piece of tape across the top of the carton and extending down the sides approximately three inches.			
ENG <i>R. J. Collins</i>	4/14/73	APPD <i>Walter Pett</i>	SIZE A	CODE PI
NUMBER 3700083-0-0			REV A	

This drawing and specifications, herein, are the property of Digital Equipment Corporation and shall not be reproduced or copied or used in whole or in part as the basis for the manufacture or sale of items without written permission.

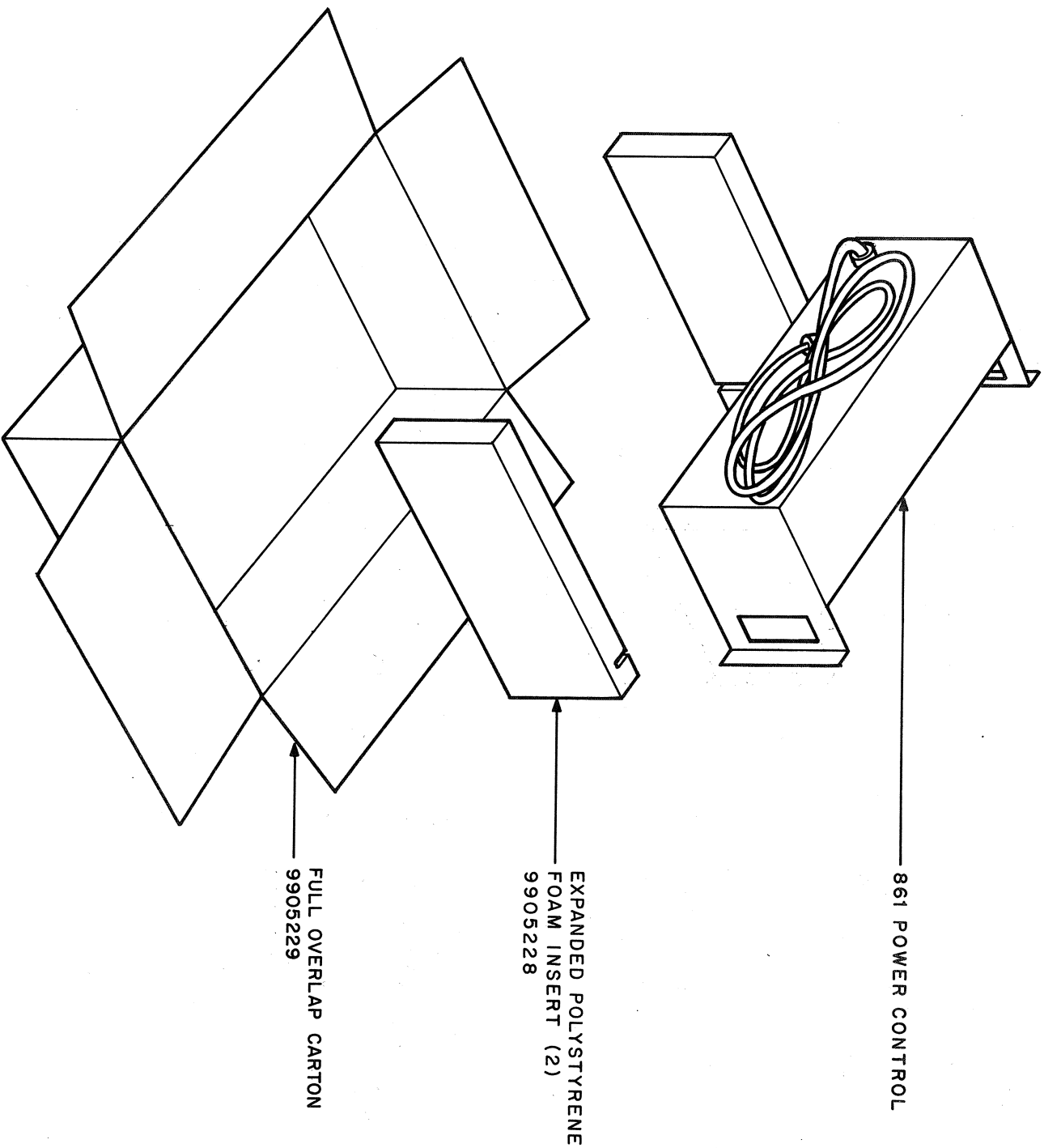
PACKAGING INSTRUCTION

TITLE

861 POWER CONTROL, INTERPLANT PACKAGE

REV: A DATE: 4/73

FIGURE 1



NOTE

Make changes to the "C" size original only and rephotograph.

ENG.

willard M Patton 12/11/72

APPD.

J W Lawrence 12/11/72

SIZE
A

CODE
PI

NUMBER

3700083-0-0

REV
A

DRC-107

SHEET 2 OF 2