

THIS DRAWING IS THE PROPERTY OF THE AIR FORCE AND IS NOT TO BE REPRODUCED OR TRANSMITTED IN ANY FORM OR BY ANY MEANS, ELECTRONIC OR MECHANICAL, INCLUDING PHOTOCOPYING, RECORDING, OR BY ANY INFORMATION STORAGE AND RETRIEVAL SYSTEM.

TITLE: LOGIC INVERTER CONTROL BOARD
 DRAWING NO: DUA 5413501-0-0
 SHEET 2 OF 4
 SCALE: 2/1
 REV: 1

DUA 5413501-0-0

F 0-0-09145 A 10 2

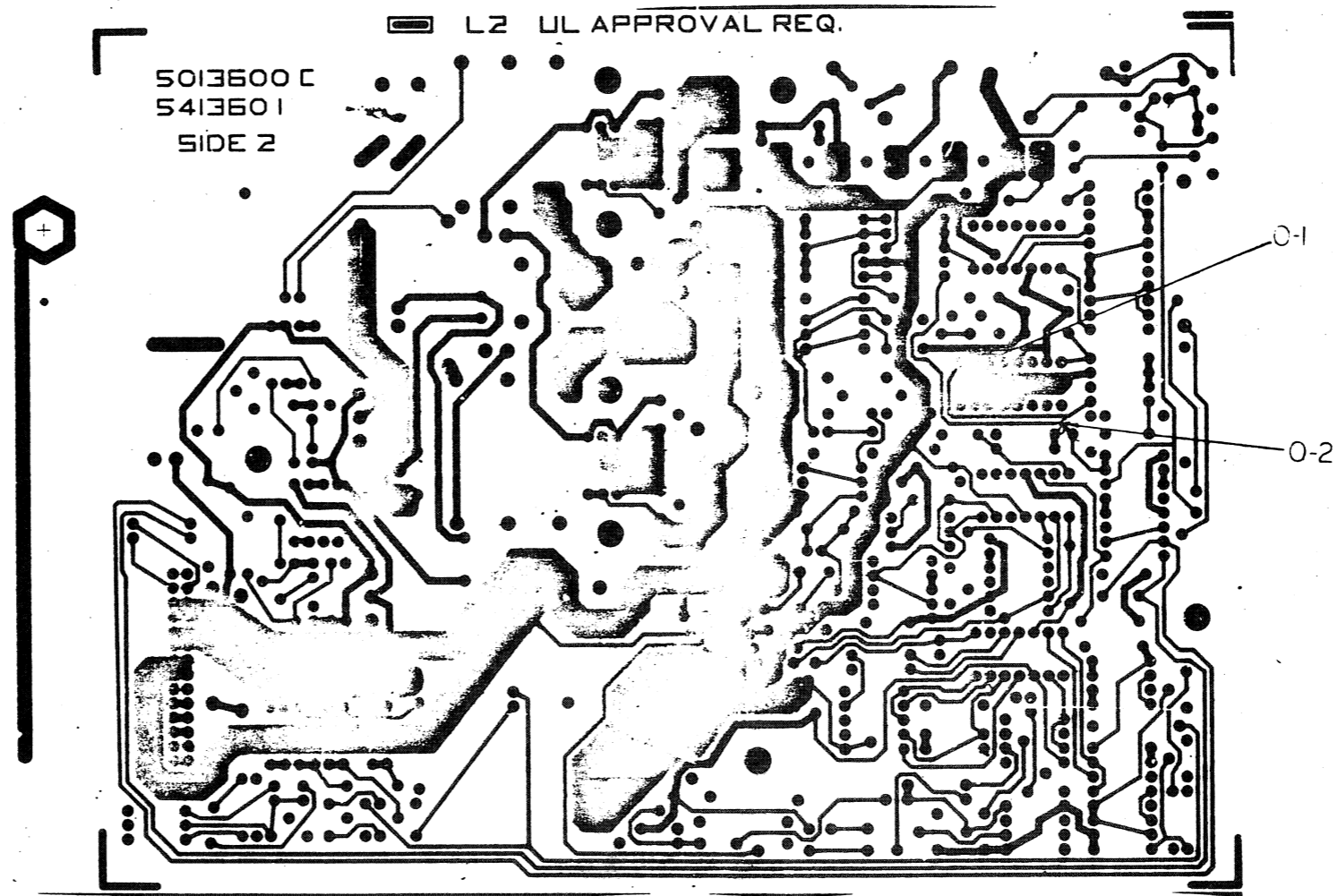
8 7 6 5 4 3 2 1

DRAWING AND SPECIFICATIONS HEREIN ARE THE PROPERTY OF DIGITAL EQUIPMENT CORPORATION AND SHALL NOT BE REPRODUCED OR COPIED IN WHOLE OR IN PART WITHOUT THE WRITTEN PERMISSION OF DIGITAL EQUIPMENT CORPORATION.

DUA 5413601-0-0 2

D
C
B
A

D
C
B
A



5013600 C
5413601
SIDE 2

L2 UL APPROVAL REQ.

0-1

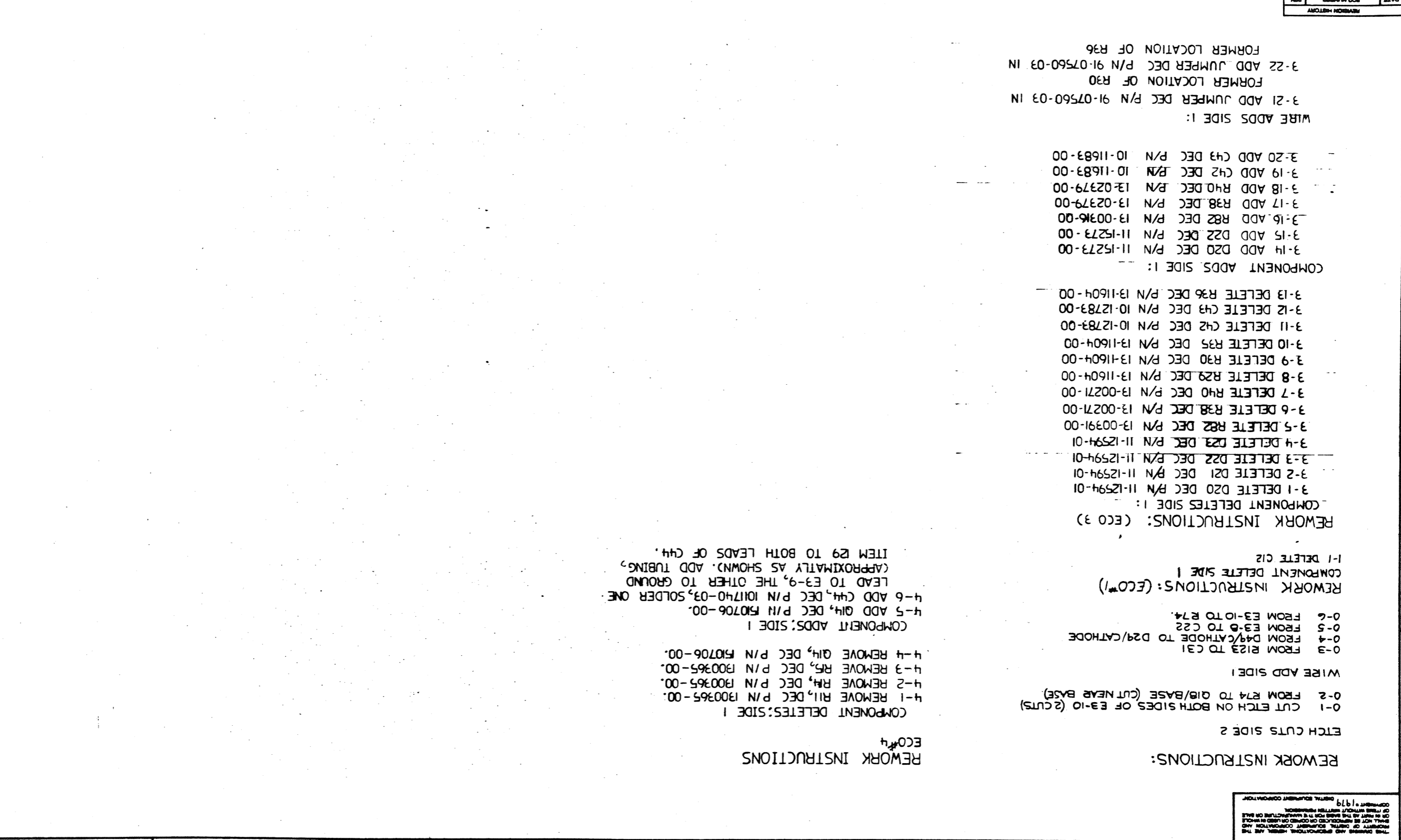
0-2

DUA 5413601-0-0 F

REVISIONS		
CHG	CHANGE NO	REV

8	7	6	5	4	3	2	1	
TITLE LOGIC INVERTER CONTROL BOARD						SIZE CODE DUA	NUMBER 5413601-0-0	REV. F
SCALE 2/1						SHEET 3 OF 4	DIST	

1	2	3	4	5	6	7	8
FC	DUA 5413601-0-0	TITLE LOGIC INVERTER CONTROL BOARD					
SCALE NONE	REV CODE	REV	REV	REV	REV	REV	REV
OF 4	DOCUMENT NUMBER						



1	2	3	4	5	6	7	8
						DUA 5413601-0-0	FC
						REV CODE	REV
						DOCUMENT NUMBER	

WIRE ADDS SIDE 1:
 3-21 ADD JUMPER DEC P/N 91-07560-03 IN FORMER LOCATION OF R30
 3-22 ADD JUMPER DEC P/N 91-07560-03 IN FORMER LOCATION OF R36
 3-14 ADD D20 DEC P/N 11-15273-00
 3-15 ADD D22 DEC P/N 11-15273-00
 3-16 ADD R82 DEC P/N 13-00366-00
 3-17 ADD R38 DEC P/N 13-02379-00
 3-18 ADD R40 DEC P/N 13-02379-00
 3-19 ADD C42 DEC P/N 10-11683-00
 3-20 ADD C43 DEC P/N 10-11683-00

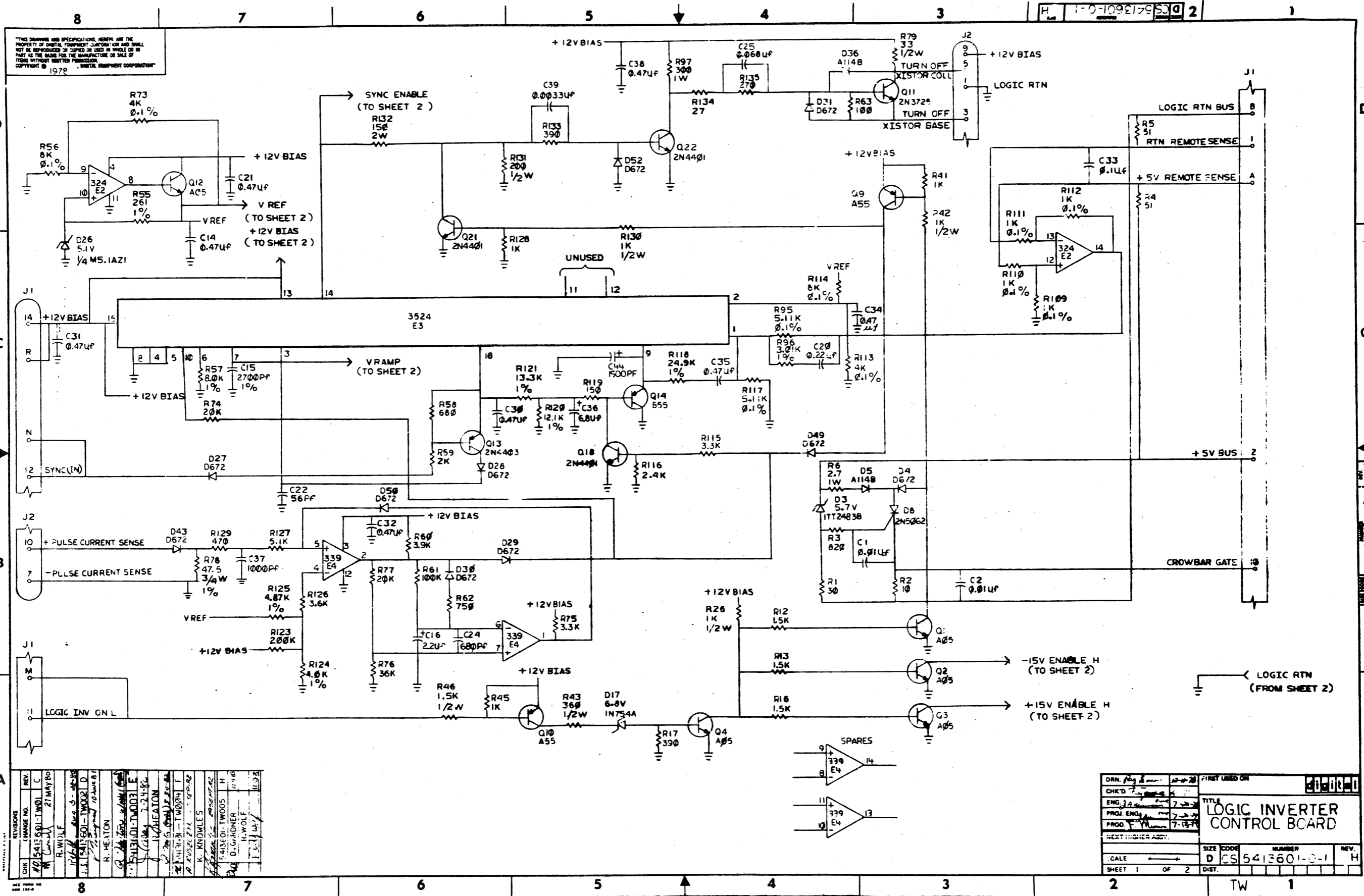
COMPONENT ADDS SIDE 1:
 3-1 DELETED D20 DEC P/N 11-12594-01
 3-2 DELETED D21 DEC P/N 11-12594-01
 3-3 DELETED D22 DEC P/N 11-12594-01
 3-4 DELETED D23 DEC P/N 11-12594-01
 3-5 DELETED R82 DEC P/N 13-00391-00
 3-6 DELETED R38 DEC P/N 13-00271-00
 3-7 DELETED R40 DEC P/N 13-00271-00
 3-8 DELETED R29 DEC P/N 13-11604-00
 3-9 DELETED R30 DEC P/N 13-11604-00
 3-10 DELETED R35 DEC P/N 13-11604-00
 3-11 DELETED C42 DEC P/N 10-12783-00
 3-12 DELETED C43 DEC P/N 10-12783-00
 3-13 DELETED R36 DEC P/N 13-11604-00

REWORK INSTRUCTIONS: (ECO 3)
 COMPONENT DELETES SIDE 1:
 3-1 DELETED D20 DEC P/N 11-12594-01
 3-2 DELETED D21 DEC P/N 11-12594-01
 3-3 DELETED D22 DEC P/N 11-12594-01
 3-4 DELETED D23 DEC P/N 11-12594-01
 3-5 DELETED R82 DEC P/N 13-00391-00
 3-6 DELETED R38 DEC P/N 13-00271-00
 3-7 DELETED R40 DEC P/N 13-00271-00
 3-8 DELETED R29 DEC P/N 13-11604-00
 3-9 DELETED R30 DEC P/N 13-11604-00
 3-10 DELETED R35 DEC P/N 13-11604-00
 3-11 DELETED C42 DEC P/N 10-12783-00
 3-12 DELETED C43 DEC P/N 10-12783-00
 3-13 DELETED R36 DEC P/N 13-11604-00

REWORK INSTRUCTIONS: (ECO 1)
 COMPONENT DELETE SIDE 1
 I-1 DELETE C12
 WIRE ADD SIDE 1
 0-1 CUT ETCH ON BOTH SIDES OF E3-10 (2 CUTS)
 0-2 FROM R74 TO G18/BASE (CUT NEAR BASE)
 0-3 FROM R123 TO C31
 0-4 FROM D49/CATHODE TO D29/CATHODE
 0-5 FROM E3-10 TO C22
 0-6 FROM E3-10 TO R74

REWORK INSTRUCTIONS: (ECO 4)
 COMPONENT DELETES: SIDE 1
 4-1 REMOVE R11, DEC P/N 1300365-00.
 4-2 REMOVE R14, DEC P/N 1300365-00.
 4-3 REMOVE R5, DEC P/N 1300365-00.
 4-4 REMOVE Q14, DEC P/N 130706-00.
 COMPONENT ADDS: SIDE 1
 4-5 ADD Q14, DEC P/N 130706-00.
 4-6 ADD C44, DEC P/N 1011740-03, SOLDER ONE LEAD TO E3-9, THE OTHER TO GROUND (APPROXIMATELY AS SHOWN). ADD TUBING, ITEM 29 TO BOTH LEADS OF C44.

THIS DRAWING AND SPECIFICATIONS HEREBY ARE THE PROPERTY OF DIGITAL EQUIPMENT CORPORATION AND SHALL NOT BE REPRODUCED OR USED IN ANY MANNER WITHOUT THE WRITTEN PERMISSION OF DIGITAL EQUIPMENT CORPORATION.
 COMPANY # 1979
 DIGITAL EQUIPMENT CORPORATION

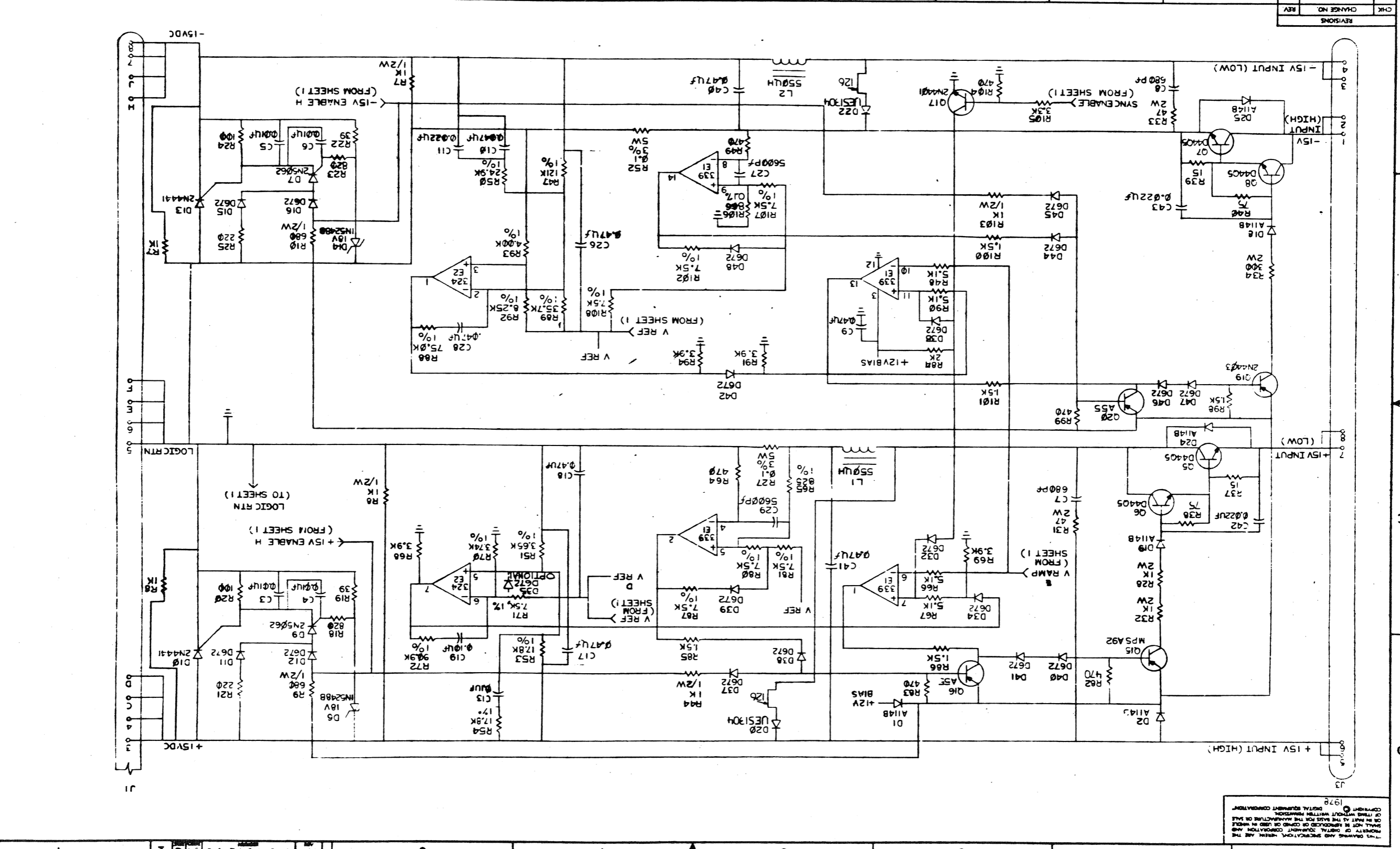


REV.	NO.	DATE	BY	CHKD.	DESCRIPTION
1	1	21 MAY 80	R. WOLF		REVISED TO ADD LOGIC INVERTER
2	2	10 JUN 80	R. HEATON		REVISED TO ADD LOGIC INVERTER
3	3	10 JUN 80	R. HEATON		REVISED TO ADD LOGIC INVERTER
4	4	10 JUN 80	R. HEATON		REVISED TO ADD LOGIC INVERTER
5	5	10 JUN 80	R. HEATON		REVISED TO ADD LOGIC INVERTER
6	6	10 JUN 80	R. HEATON		REVISED TO ADD LOGIC INVERTER
7	7	10 JUN 80	R. HEATON		REVISED TO ADD LOGIC INVERTER
8	8	10 JUN 80	R. HEATON		REVISED TO ADD LOGIC INVERTER

DRW. BY	DATE	FIRST USED ON	REV.
CHK'D			
ENG. BY			
PROJ. ENG.			
PROD. BY			
NEXT INQUIRY ADDR.			
SCALE	SIZE CODE	NUMBER	REV.
SHEET 1 OF 2	D	CS 541360-1-0-1	H

LOGIC INVERTER CONTROL BOARD

TW 1



THE DRAWING AND SPECIFICATION HEREIN ARE THE PROPERTY OF DIGITAL CORPORATION AND SHALL NOT BE REPRODUCED OR COPIED IN WHOLE OR IN PART WITHOUT WRITTEN PERMISSION OF THIS COMPANY. © 1978 DIGITAL CORPORATION.

LINE	ITEM	DOCUMENT NUMBER	PART NUMBER	DESCRIPTION	QTY	PER VARIATION	REFERENCE DESIGNATOR
					00		
1	1	D-MD-5013600-0-0	5013600-00	DRILL & ETCH BD	1		
2	2		1010978-24	.01 MFD 50V 10%	6		C1-C6
3	3		1013280-00	680.0 MMF 1000V 5%200PPM MICA	2		C7,C8
4	4		1010279-01	.47 MFD 25V 20%	14		C9,C14,C18,C21,C30-C32,C34,C35,
5	5		1010978-32	.047 MFD 50V 10%	2	CONT	C38,C17,C26,C40,C41
6	6		1011683-00	.022 MFD 50V 10%	3		C10,C28
7	7		1014170-00	2700.0 MMF 100V 1% 70PPM MICA	1		C11,C42,C43
8	8		1002627-00	2.2MFD 20V 10% S.TANT	1		C15
9	9	BLANK		*** THIS ITEM IS NOT USED ***	-		C16
10	10		1010978-36	.1 MFD 50V 10%	3		C19,C33,C13
11	11		1010274-00	.22 MFD 50V +80-20% Z5U CER	1		C20
12	12		1000012-00	56.0 MMF 100V 5%200PPM MICA	1		C22
13	13		1013466-08	680.0 MMF 50V 10% X7R CER	1		C24
14	14		1000052-00	.068 MFD 100V 10% MYLR	1		C25
15	15	BLANK		*** THIS ITEM IS NOT USED ***	-		
16	16		1011740-00	5600.0 MMF 50V 10%	2		C27,C29
17	17		1005306-00	6.8MFD 35V 10% S.TANT	1		C36
18	18		1013466-09	1000.0 MMF 50V 10% X7R CER	1		C37
19	19		1011740-01	3300.0 MMF 50V 10%	1		C39
20	20		1112595-01	PIV= 200 IO= 1.00A AXIAL	8		D1,D2,D5,D18,D19,D24,D25,D36
21	21		1111205-00	VZ= 5.7 2% 400 MW	1		D3
22	22		1105275-00	PIV= 60 IO=300 MA -15NS	28		D4,D11,D12,D15,D16,D27-D34,
23	23		1110766-00	VZ= 18.0 5% 500M2 1N5248B D	2	CONT	D37-D50,D52
24	24		1110968-00	SCR PIV= 100 IO= .80A 2N5062	3		D6,D14
25	25		1109991-00	VZ= 6.8 5% 400 MW 1N754A	1		D7-D9
26	26		1115273-00	RECT,ULTRA FAST PIV= 200 IO= 3.0	2		D17
27	27		1105871-00	VZ= 5.15 1% 250 MW	1		D20,D22
28	28	BLANK		*** THIS ITEM IS NOT USED ***	-		D26

REVISION HISTORY		BASIC PART NO: 5413601		DRN: J.LENT	DATE: 3-JAN-79	DIGITAL	
ENG	ECO NUMBER	REV	SECTION A OF A	CHK'D: F.GERRY	DATE: 19-JUL-79	TITLE PARTS LIST	
	INITIAL	B	SECTION VARIATION INDEX	DES.ENG: J.A.HERRMANN	DATE: 19-JUL-79	LOGIC INVERTER CONTROL BD	
RW	5413601-TW001	C	[A] 00	RESP.ENG.: J.A.HERRMANN	DATE: 19-JUL-79	DOCUMENT NUMBER	
RH	5413601-TW002	D	[B]	MFG.ENG.: F.MUNIZ	DATE: 19-JUL-79	SIZE	CODE
RH	5413601-TW003	E	[C]	ASSEMBLY NUMBER:	TOP DOCUMENT NUMBER:	NUMBER	REV
KK	5413601-TW004	F	[D]	D-UA-5413601-0-0		K PL	5413601-0-DBP
RW	5413601-TW005	H	[E]			FILE NAME:	EDIT #
			[F]			Z0400H.PLS	32
			[G]				
			[H]				
			[J]				
			[K]				
			[L]				
			[M]				
			[N]				

"THIS DRAWING AND SPECIFICATIONS HEREIN, ARE THE PROPERTY OF DIGITAL EQUIPMENT CORPORATION AND SHALL NOT BE REPRODUCED OR COPIED OR USED IN WHOLE OR IN PART AS THE BASIS FOR THE MANUFACTURE OR SALE OF ITEMS WITHOUT WRITTEN PERMISSION. COPYRIGHT (C) 1983. DIGITAL EQUIPMENT CORPORATION "

QTY PER VARIATION REFERENCE DESIGNATOR

LINE ITEM	DOCUMENT NUMBER	PART NUMBER	DESCRIPTION	QTY PER VARIATION	REFERENCE DESIGNATOR
29	1211728-00	CONN,P+S 01SKT	14	J2,J3	
30	1216112-01	PCB,HEADER 28POS(1X28),156CC 90D	1	J1	
31	1302751-00	CF	1	R1	
32	1301317-00	CF	1	R2	
33	1301775-00	CF	3	R3,R18,R23	
34	1312928-00	CF	2	R4,R5	
35	1310382-00	CC	1	R6	
36	1300364-00	CF	7	R7,R8,R26,R42,R44,R103,R130	
37	1300347-00	CF	2	R9,R10	
38	1300365-00	CF	3	R41,R45,R128	
39	1300391-00	CF	8	R12,R13,R16,R85,R86,R98,R100,	
40	1300309-00	CF	2	R17,R133	
41	1302377-00	CF	2	R19,R22	
42	1300229-00	CF	3	R20,R24,R63	
43	1300271-00	CF	2	R21,R25	
44	1305872-00	WM	2	R27,R52	
45	1301952-00	CC	2	R28,R32	
46	1314023-00	*** THIS ITEM IS NOT USED ***	-		
47	1314023-00	CC	2	R31,R33	
48	1309855-00	CC	1	R34	
49	1301421-00	CF	2	R37,R39	
50	1305143-00	RN5SD-F10	1	R65	
51	1302383-00	CF	1	R43	
52	1300394-00	CF	1	R46	
53	1303438-00	RN5SD-F10	1	R47	
54	1300316-00	CF	7	R49,R64,R83,R99,R104,R129,R82	
55	1305405-00	RN5SD-F10	2	R50,R118	
56	1305337-00	RN5SD-F10	1	R51	
57	1312989-00	RN5SD-F10	2	R53,R54	
58	1313151-00	CF	1	R126	
59	1302873-00	RN5SD-F10	1	R55	
60	1305356-00	RN55C-B 5	2	R56,R114	
61	1305129-00	RN5SD-F10	1	R57	
62	1312930-00	CF	5	R48,R66,R67,R90,R127	
63	1300444-00	CF	5	R60,R68,R69,R91,R94	
64	1302466-00	CF	1	R61	
65	1301401-00	CF	1	R62	
66	1302391-00	*** THIS ITEM IS NOT USED ***	-		
67	1302391-00	CF	2	R77,R74	
68	1312452-00	RN5SD-F10	1	R70	
69	1313344-00	RN5SD-F10	1	R88	
70	1311320-00	RN5SD-F10	1	R72	
71	1304728-00	RN55E-B 2	2	R73,R113	
72	1300439-00	CF	3	R75,R105,R115	
73	1312932-00	CF	1	R76	
74	1301459-00	RN6SD-F10	1	R78	
75	1300195-00	CF	1	R79	

BLANK

BLANK

SECTION A OF A

LOGIC INVERTER CONTROL BD

TITLE

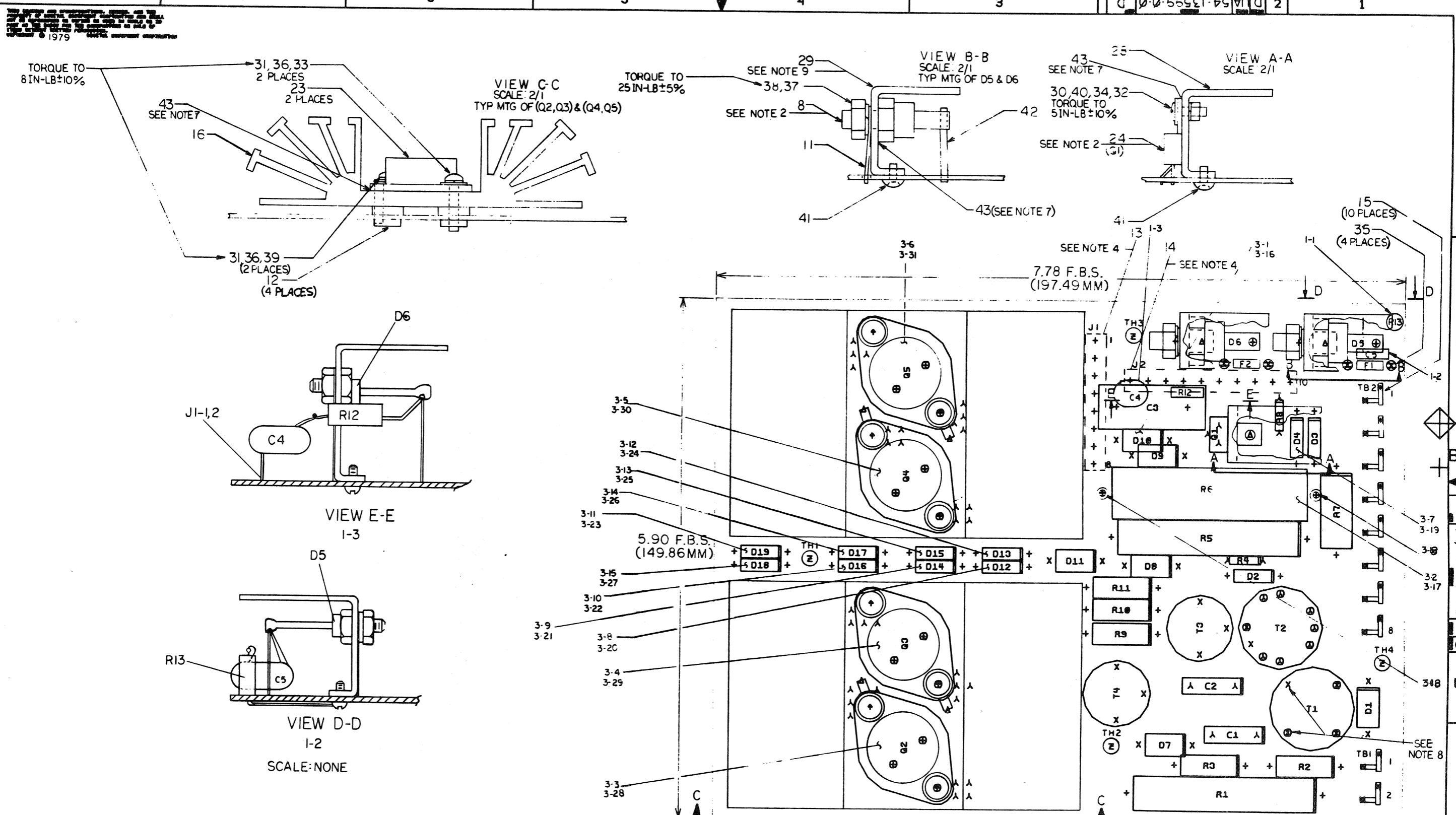
D I G I T A L

SIZE: K PL 5413601-0-DBP H REV

PARTS LIST

LINE	ITEM	DOCUMENT NUMBER	PART NUMBER	DESCRIPTION	QTY	PER VARIATION	REFERENCE DESIGNATOR
					00		
76	76		1305322-00	7.50 K .25 W 1.0 % RN55D-F10	7		R80,R81,R107,R108,R87,R102,R71
77	77		1302388-00	2.0 K .25 W 5.0 % CF	2		R59,R84
78	78		1305421-00	35.70 K .25 W 1.0 % RN55D-F10	1		R89
79	79		1305325-00	8.25 K .25 W 1.0 % RN55D-F10	1		R92
80	80		1305127-00	4.0 K .25 W 1.0 % RN55D-F10	2		R93,R124
81	81		1305432-00	5.11 K .25 W .10% RN55E-B 2	2		R95,R117
82	82		1314041-00	3.01 K .25 W 1.0 % RN55D-F10	1		R96
83	83		1300292-00	300.0 1.0 W 5.0 % CC	1		R97
84	84		1304865-00	1.0 K .25 W .10% RN55E-B 2	4		R109-R112
85	85		1300250-00	150.0 .25 W 5.0 % CF	1		R119
86	86		1303313-00	12.10 K .25 W 1.0 % RN55D-F10	1		R120
87	87		1312565-00	13.30 K .25 W 1.0 % RN55D-F10	1		R121
88	88	BLANK		*** THIS ITEM IS NOT USED ***	-		
89	89	BLANK		*** THIS ITEM IS NOT USED ***	-		
90	90		1302381-00	200.0 .50 W 5.0 % CF	1		R131
91	91		1300257-00	150.0 2.0 W 5.0 % CC	1		R132
92	92		1301522-00	27.0 .25 W 5.0 % CF	1		R134
93	93		1301972-00	270.0 .25 W 5.0 % CF	1		R135
94	94		1510705-00	XA 05 NPN 500MW SI 60 50 P	5		Q1-Q4,Q12
95	95		1514271-01	D 44Q5 NPN 31W SI225 30	4		Q5-Q8
96	96		1510706-00	XA 55 PNP 500MW SI 60 50 P	4		Q9,Q10,Q16,Q20
97	97		1510959-00	2N 3725 NPN 3.5WC SI 50 60 P	1		Q11
98	98		1513490-00	2N 4403 PNP 350MW SI-40 30	2		Q13,Q19
99	99		1516121-00	MPS A92 PNP 625MW SI300 25	1		Q15
100	100		1513489-00	2N 4401 NPN 350MW SI 40 20	4		Q17,Q18,Q21,Q22
101	101		1505867-00	SCR PIV= 50 IO= 8.00A 2N4441	2		D10,D13
102	102		1616213-00	450.0 UH 4 A	2		L1,L2
103	103		1912108-00	339 VOLT CMPRTR,QUAD	2		E1,E4
104	104		1912107-00	324 OP AMP,QUAD	1		E2
105	105		1914250-00	3524 MODULATOR-REGULATING	1		E3
106	106		7422047-01	HEAT SINK DOUBLE	2		
107	107		1301424-00	680.0 .25 W 5.0 % CF	1		R58
108	108		9006039-01	SCREW,MACH PAN PHIL 8-	2		
109	109		9006660-00	WASHER,FLAT SST	4		
110	110		9006690-00	WASHER,HELICAL SPLIT SST	2		
111	111		1303177-00	2.40 K .25 W 5.0 % CF	1		R116
112	112		9006011-01	SCREW,MACH PAN PHIL 4-	4		
113	113		9009769-00	WASHER,RECTNGLR STEEL	4		
114	114		9006556-00	NUT,HEX 4-40X .264AF SS/N	4		
115	115		9006688-00	WASHER,HELICAL SPLIT SST	4		
116	116		9010128-00	SCREW,TAP PAN PHIL THD RL 4-	4		
117	117		9007201-00	PAD,MOUNTING,COMPONENT	1		C23
118	118		9008268-00	COMPOUND, THERMAL JOINT	A/R		
119	119		1314516-00	200.0 K .25 W 5.0 % CF	1		R123
120	120		1313592-00	4.87 K .25 W 1.0 % RN55D-F10	1		R125
121	121		9105740-55	WIRE(WRAP) 30AWG KYNAR UL14	A/R		
122	122	BLANK		*** THIS ITEM IS NOT USED ***	-		
123	123	BLANK		*** THIS ITEM IS NOT USED ***	-		

D	I	G	I	T	A	L	TITLE	LOGIC INVERTER CONTROL BD	SECTION A	OF A	SIZE	CODE	DOCUMENT NUMBER	REV
											K	PL	5413601-0-DBP	H



- NOTES:**
- FOR STEP AND REPEAT DIM'S SEE 2 ML 39
 - Q1, D5 & D6 MUST BE MOUNTED TO HEATSINKS BEFORE BEING ATTACHED TO P.C.B.
 - FOR ASSM. OF ITEM 23 SEE VIEW C
 - J1 AND J2 TO BE MOUNTED ON SIDE 2
 - RAISE R1, 5, AND R6, 1, 2 TO 150° OFF P.C.B.
 - RAISE D1, 7, 8-11 AND R3, 7, 9-11, C5 TO JOC

CHG	NO	REV	DATE	BY	CHK'D
5413599-0	1	C	11-14-79	RICHARD	
5413599-0	2	D	12-17-79	K KNOWLES	

- NOTES:**
- USE THERMAL COMPOUND ITEM 43 BETWEEN Q2, Q3, Q4, Q5, Q1, D5, D6 AND HEAT SINK.
 - LARGER DIAMETER LEADS IN THESE TWO POSITIONS.
 - TOP FIN OF ITEM 29 (HEATSINK) MUST BE INSTALLED PARALLEL TO EDGE OF BOARD

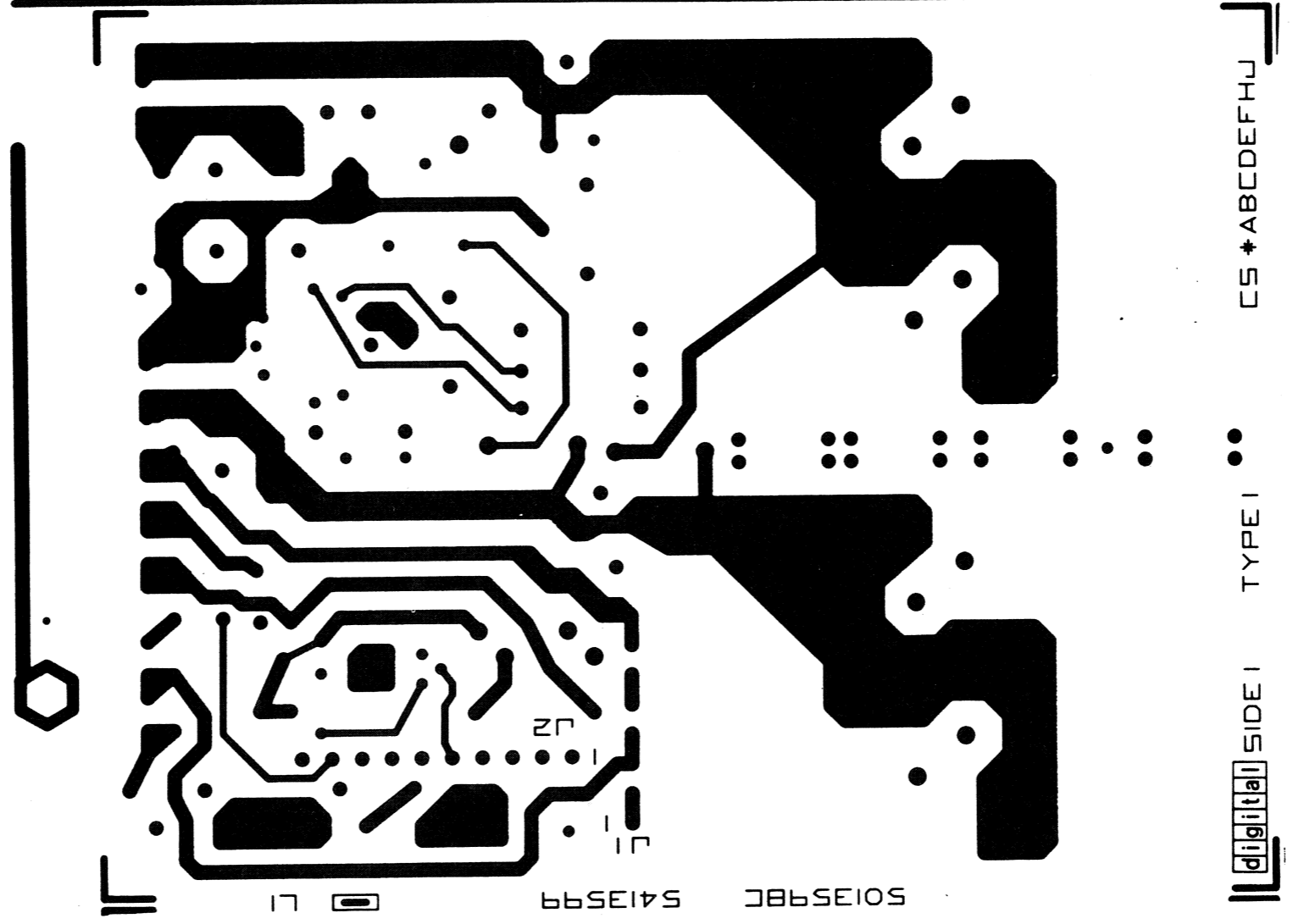
ETCH REV.	C
P.C. DESIGN DATA BASE REV.	CL

SIGNATURES	DATE	TITLE
DRN. <i>Ray Long</i>	2-9-79	LOGIC INVERTER BD.
CHK'D. <i>Paul Karpale</i>	2-21-79	
ENC. <i>W. Thompson</i>	6-26-79	
PROD. <i>T. Munn</i>	7-15-79	

SIZE CODE NUMBER REV
D U A 54-13599-0-0 D

REV.		D		NUMBER		5413599-0-0		SIZE CODE		DUA		TITLE		LOGIC INVERTER BOARD		SHEET 2 OF 4		SCALE 1/1		DIST.		7u	
------	--	---	--	--------	--	-------------	--	-----------	--	-----	--	-------	--	----------------------	--	--------------	--	-----------	--	-------	--	----	--

PERVISIONS	
CHK	CHANGE NO
REV	



A
B
C
D

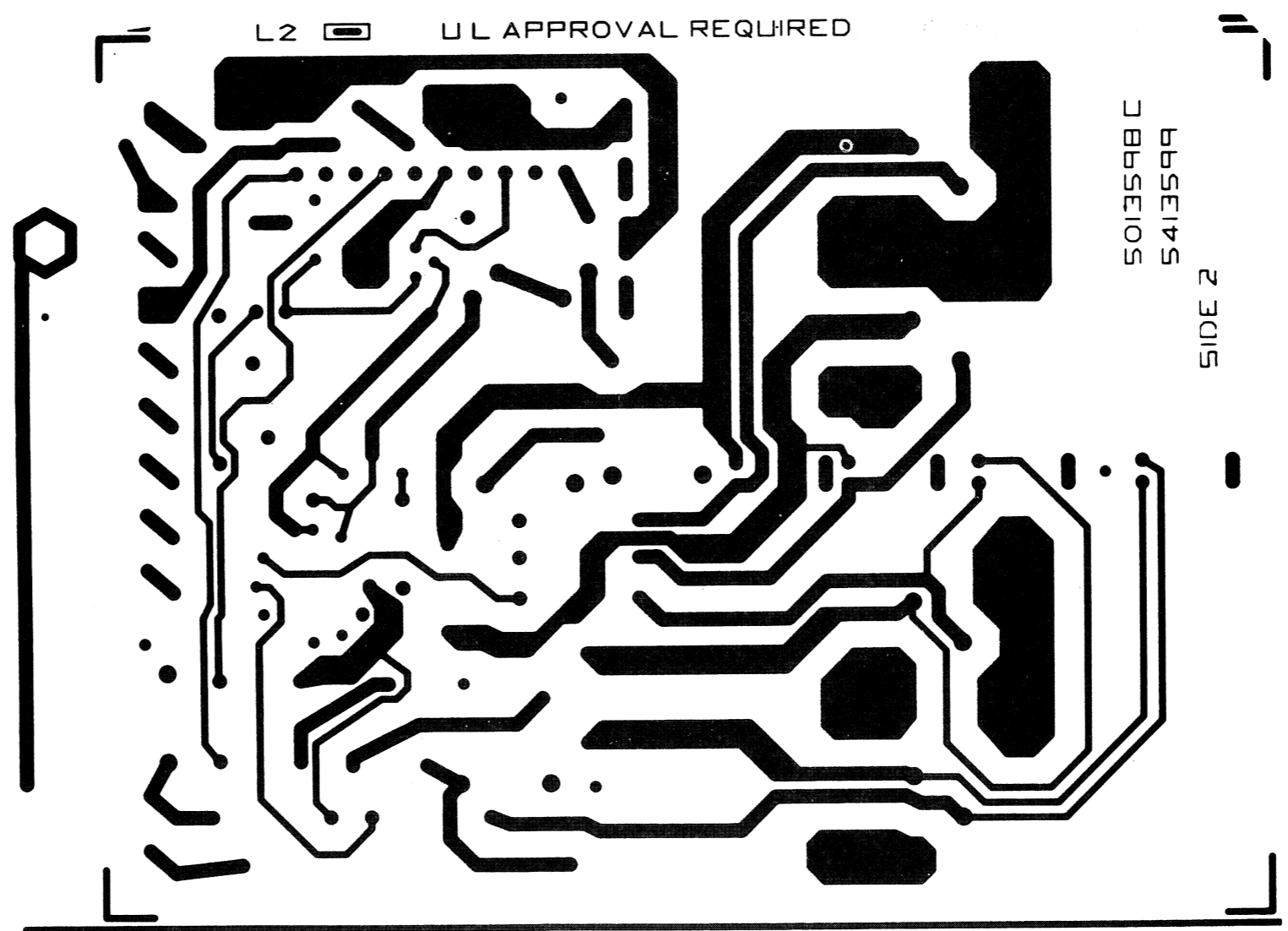
A
B
C
D

DUA 5413599-0-0

D	0-0-665145	NUMBER	2	CODE
---	------------	--------	---	------

THIS DRAWING AND SPECIFICATIONS HEREIN ARE THE PROPERTY OF DIGITAL EQUIPMENT CORPORATION AND SHALL NOT BE REPRODUCED OR COPIED OR USED IN WHOLE OR IN PART AS THE BASIS FOR THE MANUFACTURE OR SALE OF ITEMS WITHOUT WRITTEN PERMISSION. COPYRIGHT © 1979 DIGITAL EQUIPMENT CORPORATION.

THE DRAWING AND SPECIFICATION HEREIN ARE THE PROPERTY OF DIGITAL EQUIPMENT CORPORATION AND SHALL NOT BE REPRODUCED OR TRANSMITTED IN ANY FORM OR BY ANY MEANS, ELECTRONIC OR MECHANICAL, INCLUDING PHOTOCOPYING, RECORDING, OR BY ANY INFORMATION STORAGE AND RETRIEVAL SYSTEM, WITHOUT WRITTEN PERMISSION FROM DIGITAL EQUIPMENT CORPORATION.



5013598 C
5413599
SIDE 2

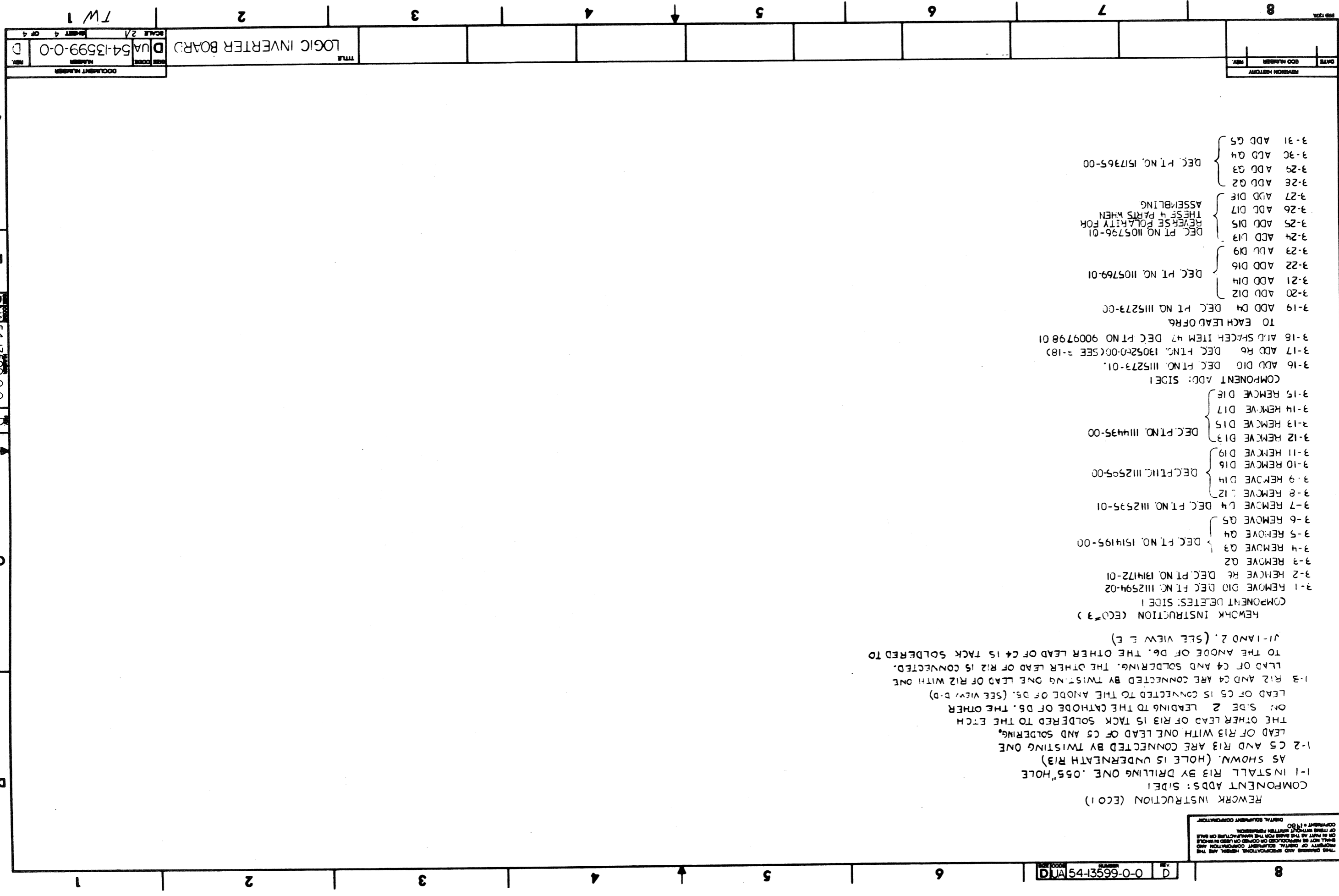
L2 UL APPROVAL REQUIRED

REVISIONS		
REV.	CHANGE NO.	DATE

TITLE	NUMBER	REV.
LOGIC INVERTER BOARD	DUA 5413599-0-0	D
SCALE 2/1	SHEET 3 OF 4	DIST.

DUA 5413599-0-0 D

70 1



THIS DRAWING AND SPECIFICATIONS HEREBY ARE THE PROPERTY OF GENTRAL ELECTRONIC CORPORATION AND SHALL NOT BE REPRODUCED OR COPIED IN ANY MANNER WITHOUT THE WRITTEN PERMISSION OF GENTRAL ELECTRONIC CORPORATION.

REWORK INSTRUCTION (ECO1)
 COMPONENT ADS: SIDE1

1-1 INSTALL R13 BY DRILLING ONE .055" HOLE AS SHOWN. (HOLE IS UNDERNEATH R13)

1-2 C5 AND R13 ARE CONNECTED BY TWISTING ONE LEAD OF R13 WITH ONE LEAD OF C5 AND SOLDERING.

THE OTHER LEAD OF R13 IS TACK SOLDERED TO THE ETCH ON SIDE 2 LEADING TO THE CATHODE OF D5. THE OTHER

LEAD OF C5 IS CONNECTED TO THE ANODE OF D5. (SEE VIEW D-D)

1-3 R12 AND C4 ARE CONNECTED BY TWISTING ONE LEAD OF R12 WITH ONE LEAD OF C4 AND SOLDERING. THE OTHER LEAD OF R12 IS CONNECTED TO THE ANODE OF D6. THE OTHER LEAD OF C4 IS TACK SOLDERED TO

11-1 AND 2. (SEE VIEW E-E)

REWORK INSTRUCTION (ECO3)

COMPONENT DETEST: SIDE 1

3-1 REMOVE D10 DEC. PT. NO. 1112594-02

3-2 REMOVE R6 DEC. PT. NO. 111172-01

3-3 REMOVE Q2

3-4 REMOVE Q3 DEC. PT. NO. 1514195-00

3-5 REMOVE Q4

3-6 REMOVE Q5

3-7 REMOVE L4 DEC. PT. NO. 1112595-01

3-8 REMOVE L12

3-9 REMOVE D14

3-10 REMOVE D16 DEC. PT. NO. 1112595-00

3-11 REMOVE D19

3-12 REMOVE D13 DEC. PT. NO. 1114435-00

3-13 REMOVE D15

3-14 REMOVE D17

3-15 REMOVE D18

COMPONENT ADD: SIDE 1

3-16 ADD D10 DEC. PT. NO. 111273-01.

3-17 ADD R6 DEC. PT. NO. 1105240-00 (SEE 3-18)

3-18 ADD SPACE ITEM #7 DEC. PT. NO. 9009798 01 TO EACH LEAD OF R6

3-19 ADD D4 DEC. PT. NO. 1115273-00

3-20 ADD D12

3-21 ADD D14 DEC. PT. NO. 1105769-01

3-22 ADD D16

3-23 ADD D9

3-24 ADD L13 DEC. PT. NO. 1105796-01

3-25 ADD D15

3-26 ADD D17

3-27 ADD D18

3-28 ADD Q2

3-29 ADD Q3

3-30 ADD Q4

3-31 ADD Q5

REVERSE POLARITY FOR THESE 4 PARTS WHEN ASSEMBLING

DEC. PT. NO. 1517365-00

REVISION HISTORY
 DATE
 DOC NUMBER
 REV.

LOGIC INVERTER BOARD
 TITLE

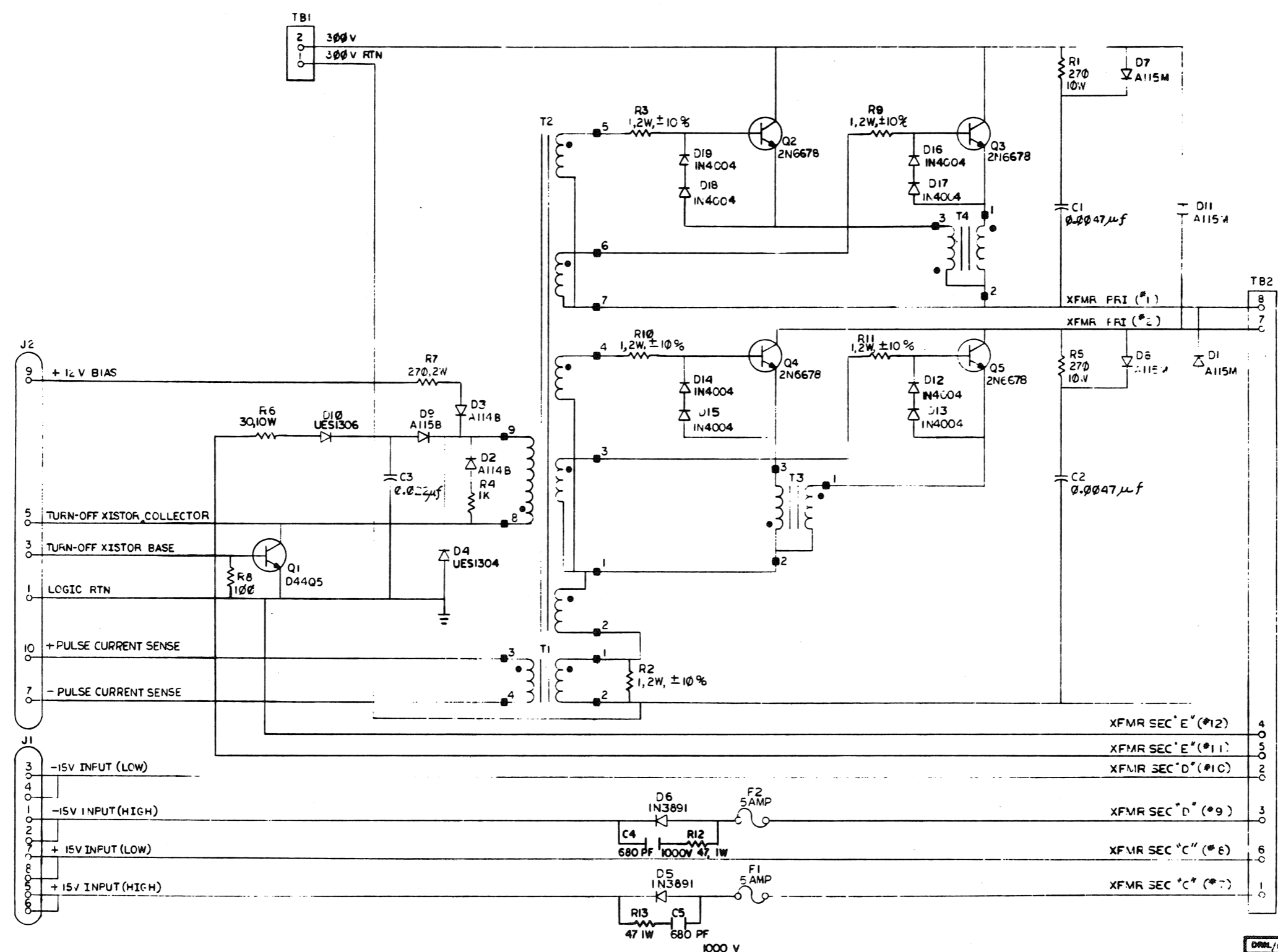
DOCUMENT NUMBER
 DUA54-13599-0-0

SCALE 2/1
 SHEET 4 OF 4

TW 1

DUA54-13599-0-0

THIS DRAWING AND SPECIFICATIONS, UNLESS THE TITLE PROPERTY OF MILITARY RESEARCH CORPORATION AND SHALL NOT BE REPRODUCED OR COPIED IN WHOLE OR IN PART FOR THE BASIS FOR THE CONSTRUCTION OR SALE OF ANY EQUIPMENT WITHOUT PERMISSION.
 MILITARY RESEARCH CORPORATION
 1976



DESIGNER	DATE
CHIEF ENGR.	15413599-TWO01 C
ENGR.	15413599-TWO01 C
PROJ. ENGR.	15413599-TWO03 E
NEXT HIGHER ASBY.	

DRW. BY	10-2-76	FIRST USED ON	CS 5413599-0-1 E
CHK'D		TITLE	LOGIC INVERTER BOARD
ENGR.	6-2-76	SIZE	D
PROJ. ENGR.	6-2-76	CODE	CS
PROD. ENGR.	7-15-76	NUMBER	5413599-0-1
NEXT HIGHER ASBY.		REV.	E
SCALE		SHEET	1
SHEET	OF	DIST.	

CS 5413599-0-1 E

AUTOMATED BY PRTLST.3H(23)

PARTS LIST

SHEET A2 OF A2

LINE	ITEM	DOCUMENT NUMBER	PART NUMBER	DESCRIPTION	QTY	PER VARIATION	REFERENCE DESIGNATOR
					00		
31	31		9006025-01	SCREW, MACH PAN PHIL 6-	8		
32	32		9006556-00	NUT, HEX 4-40X .264AF SS/N	1		
33	33		9006656-00	WASHER, FLAT STEEL	4		
34	34		9006688-00	WASHER, HELICAL SPLIT SST	1		
35	35		9006735-00	EYELET, FUNNEL 0.0590DX0.187	4		
36	36		9007801-00	WASHER, HELICAL SPLIT SST	8		
37	37		9007906-00	WASHER, HELICAL SPLIT STEEL	2		
38	38		9009005-00	NUT, HEX 10-32X .246AF SS/N	2		
39	39		9009676-00	TERM, SOLDER BARRIER STR	4		
40	40		9009769-00	WASHER, RECTNGLR STEEL	1		
41	41		9010128-00	SCREW, TAP PAN PHIL THD RL 4-	3		
42	42		9107560-03	WIRE, BUSS 18AWG TIN BARE	A/R		
43	43		9008268-00	COMPOUND, THERMAL JOINT	A/R		
44	44		1013280-00	680.0 MMF 1000V 5%200PPM MICA	2		C4, C5
45	45		1302199-00	47.0 1.0 W 5.0% CC	2		R12, R13
46	46		1115273-01	UES1306 RECTIFIER 400V 5V 50NS	1		D10
47	47		9009798-01	SPACER, CLEAR HOLE RND CERAM .07	2		
48	48		1115273-00	UES 1304 RECTIFIER 200V 6A	1		D4

49 NOTE: ITEM #42; .19' IS ISED.

D	I	G	I	T	A	L	TITLE	SECTION A OF A	SIZE	CODE	DOCUMENT NUMBER	REV
							LOGIC INVERTER BD		K	PL	5413599-0-DBP	E