

DRAWING DIRECTORY

CUSTOMER PRINT SET INDEX

THIS IS PRINT SET

DRAWING DIRECTORY
 CIRCUIT SCHEMATIC
 PWR CONTROL BOARD
 CIRCUIT SCHEMATIC
 UNIT ASSEMBLY H742
 UNIT ASSEMBLY (PL)

SEQUENCE

B-DD-H742-Ø
D-CS H742-Ø-1
E-IA 5409730-0-0
C-CS 5409730-0-1
E-UA-H742-Ø-Ø
A-PL-H742-Ø-Ø

SEQUENCE

MFG SET

TEST PROCEDURE

MFG SPEC.

PACKAGING INSTRUCTION

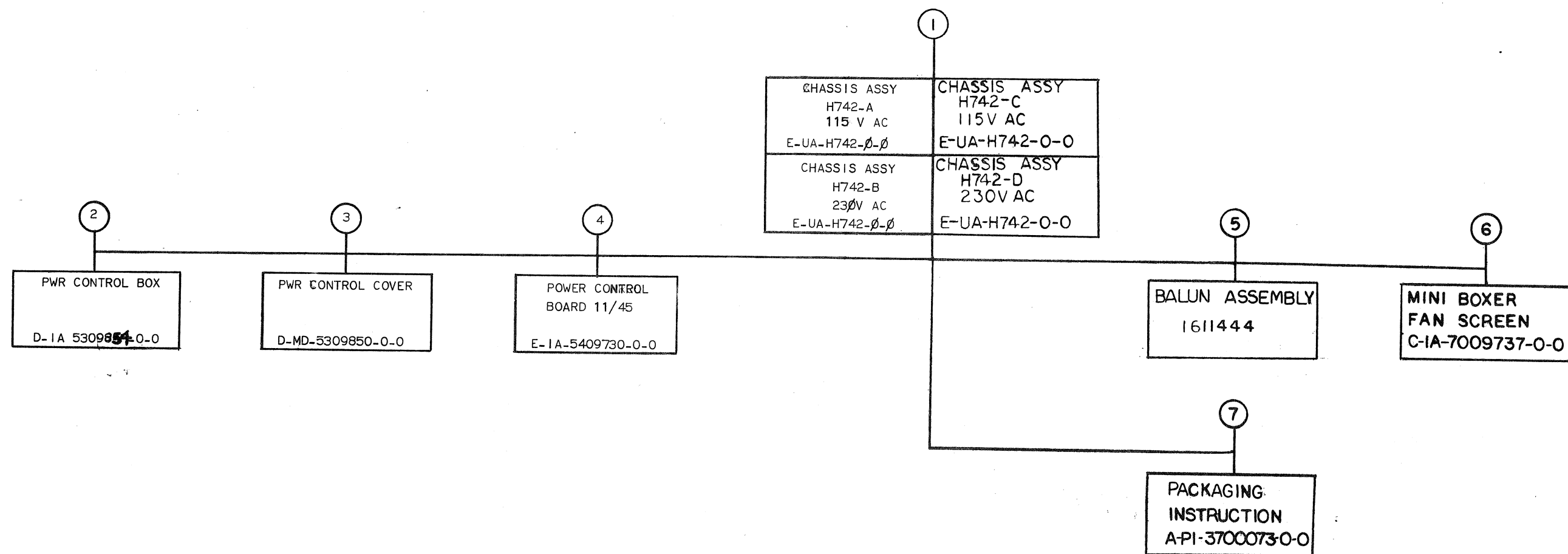
A-SP-H742 ϕ -3
A-SP-H742- ϕ -8
A-PI-3700073-0-0

UNIT VARIATIONS

PRINT SET TYPE

[illegible]

REVISIONS																					USED ON OPTION/MODEL		DRN. D.FONTAINE		DATE 13172		TITLE			
DATE	CHG. NO.	REV																					CHK'D	DATE	SIZE CODE		NUMBER		REV	
7/72	H742-2	A																			11/45		<i>[Signature]</i>	2-4-72						
7/72	H742-3	B																												
8/72	H742-4	C																												
8/72	H742-5	D																												
10/72	H742-7	E																												
11/72	H742-8	F																												
12/72	H742-11	H																												
2/73	H742-12	J																												
2/73	H742-13	K																												
2-73	H742-14	L																												
4-73	H742-15	M																												
4-73	H742-16	N																												
5-73	H742-17	P																												
6-73	H742-18	R																												
12-73	H742-19	S																												
3-74	H742-20	T																												
4-74	H742-21	U																												
																											</			

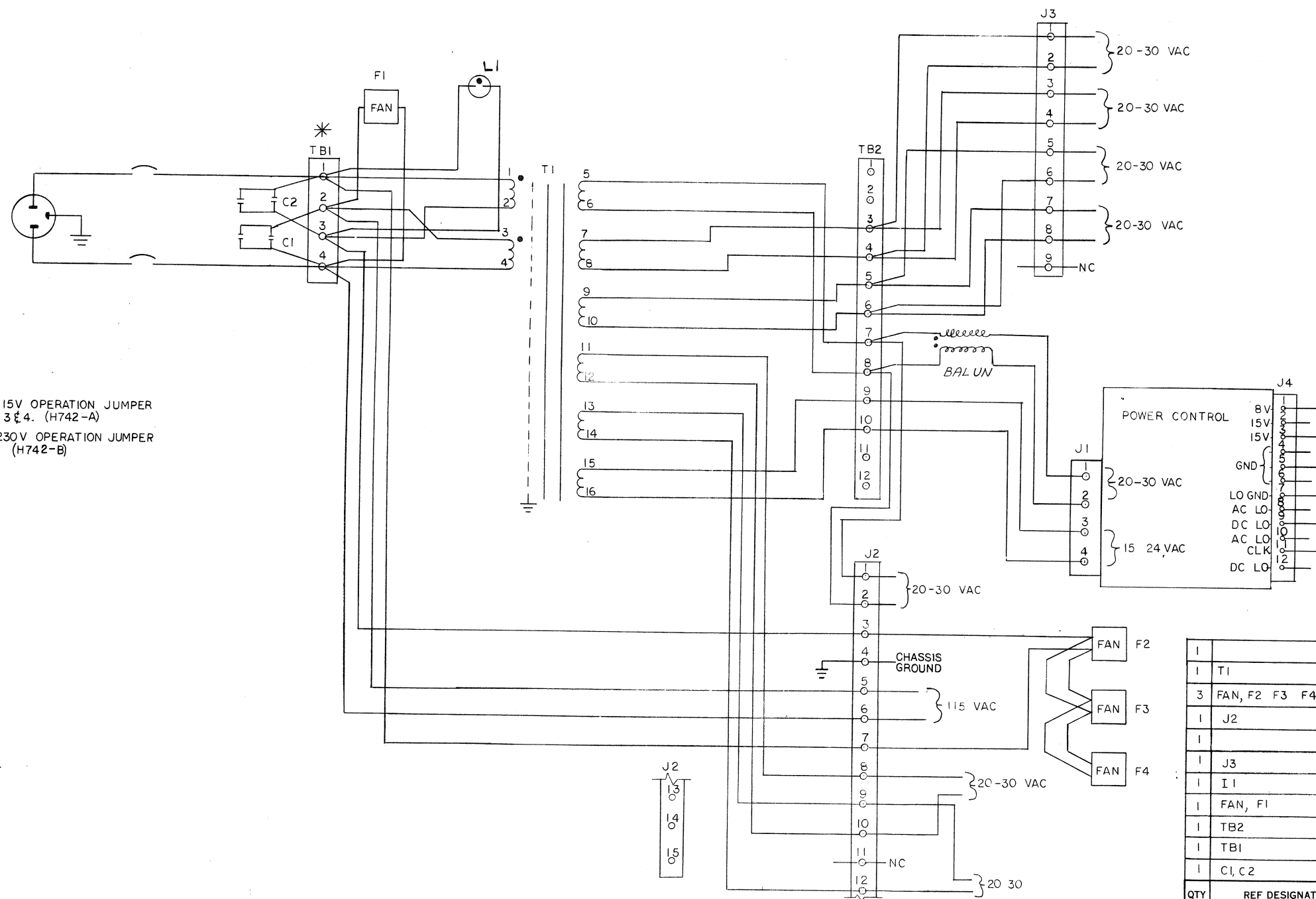


[illegible]

This drawing and specifications, herein, are the property of Digital Equipment Corporation and shall not be reproduced or copied or used in whole or in part as the basis for the manufacture or sale of items without written permission. 1972

NOTE

- * FOR 115V OPERATION JUMPER 1 & 2, 3 & 4. (H742-A)
- FOR 230V OPERATION JUMPER 2 & 3. (H742-B)

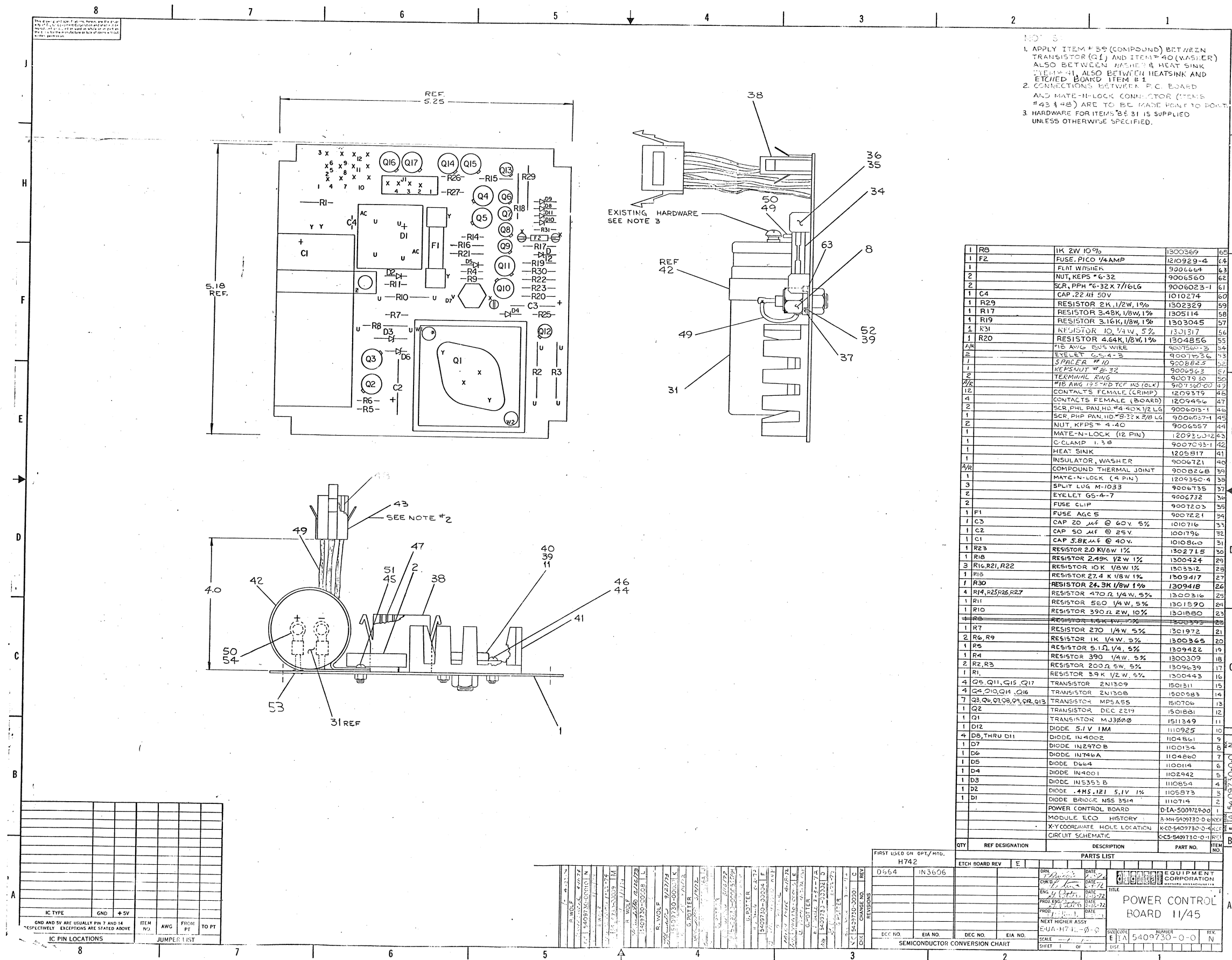


QTY	REF DESIGNATION	DESCRIPTION	PART NO.	ITEM NO.
1	POWER CONTROL		5409730	11
1	T1	XMFR	1610857	10
3	FAN, F2 F3 F4	FAN SUPER BOXER	1209403-1	9
1	J2	MATE-N-LOCK	1209350-15	8
1		BALUN ASSY	1611444	7
1	J3	MATE-N-LOCK	1209350-9	6
1	I1	LIGHT PILOT	1201280	5
1	FAN, F1	FAN PEWEE	1210719	4
1	TB2	JONES STPIP	9006917	3
1	TB1	JONES STRIP	9006902	2
1	C1, C2	CAPACITOR 2 X 1UF 1000V	1010193	1

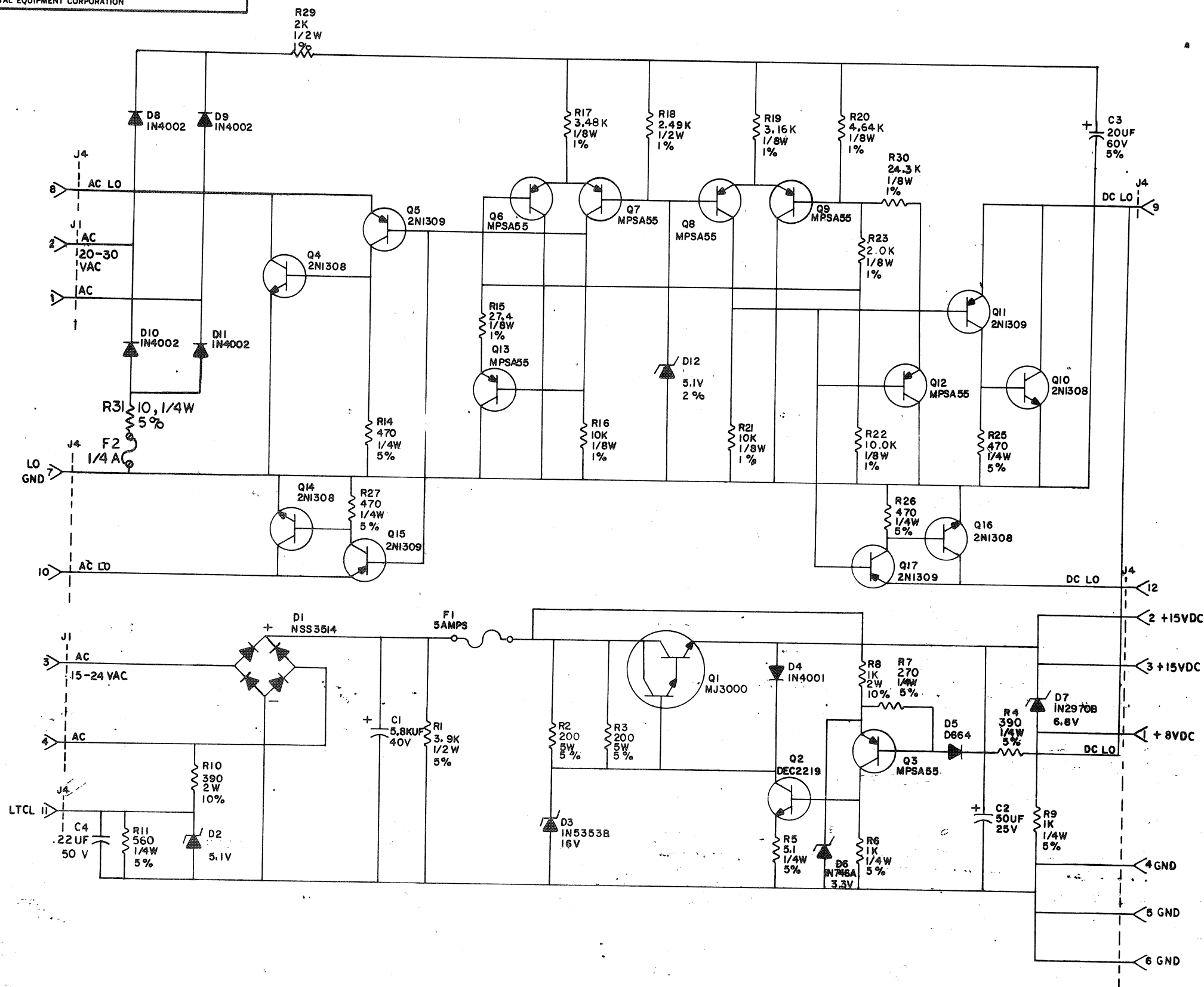
PARTS LIST			
ETCH BOARD REV			
DRN	DATE	2-3-72	
CHK	DATE	2-4-72	
ENG	DATE	2-4-72	
PROJ. ENG	DATE	2-4-72	
PROD.	DATE	2-4-72	
NEXT HIGHER ASSY			
B-DD-H742-0			
SCALE			
SHEET	1	OF	1

digital EQUIPMENT CORPORATION	
MAYNARD, MASSACHUSETTS	
TITLE	CIRCUIT SCHEMATIC
H742	
SIZE CODE	D
NUMBER	H742-0-1
REV.	E

SEMICONDUCTOR CONVERSION CHART



THIS SCHEMATIC IS FURNISHED ONLY FOR TEST AND MAINTENANCE PURPOSES. THE
CIRCUITS ARE PROPRIETARY IN NATURE AND SHOULD BE TREATED ACCORDINGLY.
COPYRIGHT 1972 BY DIGITAL EQUIPMENT CORPORATION



REVISIONS		
CHK	CHG NO.	REV.
✓	00001	C
O.I. Note 3-4-72		

DEC FORM NO
DEC 102

[illegible]

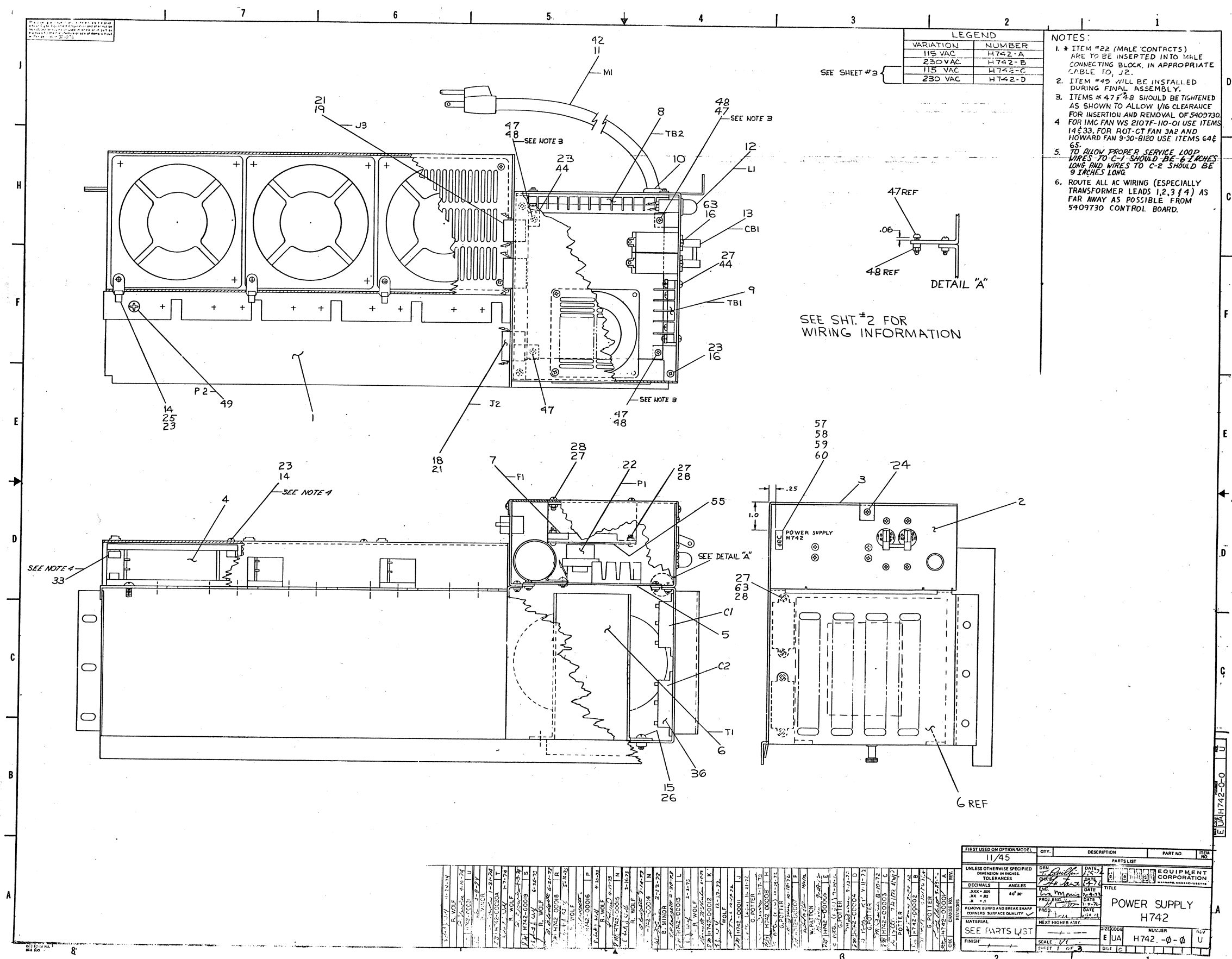
DRN. S. COOPER	DATE 2/24/76
CHK'D [Signature]	DATE 3-1-72
ENG. [Signature]	DATE 3-1-72
FILED [Signature]	DATE 3-1-72

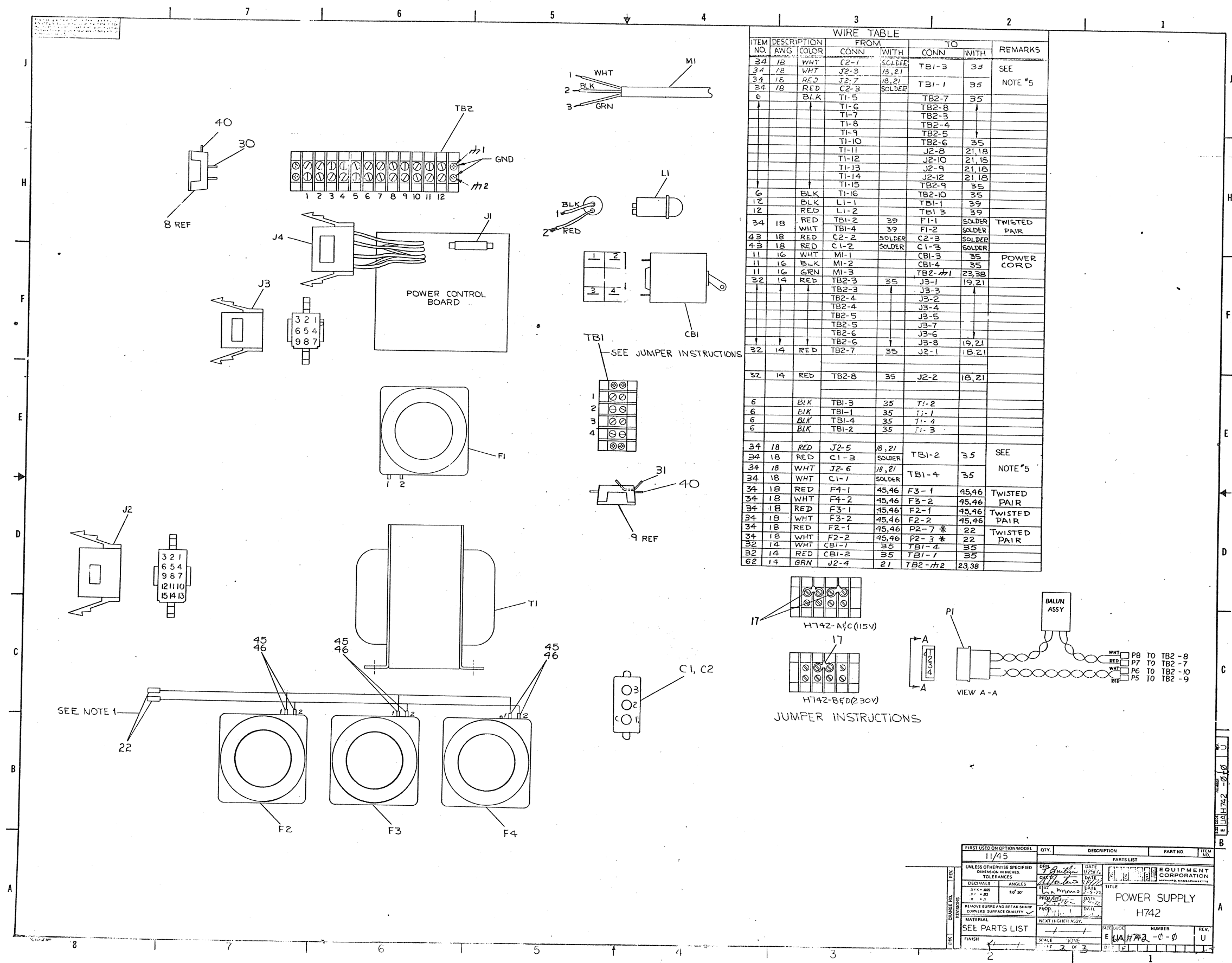
DEC2219	2N2219	1N923	
2N1308	SAME	1N5353B	
1N5455		1N751A	SAME
MJ3000		1N4001	SAME
2N1309	SAME	1N2970B	
1N4002		1N746A	
D664	1N3606		

digital
EQUIPMENT
CORPORATION
MAYNARD, MASSACHUSETTS

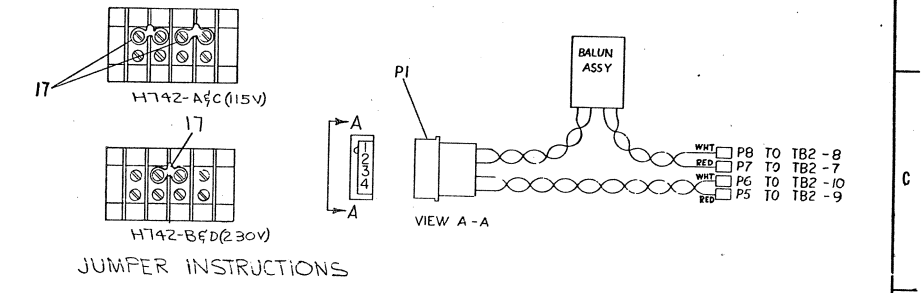
TITLE
POWER CONTROL BD.

SIZE C	CODE CS	NUMBER 5409730-0-1	REV N
PRINTED CIRCUIT REV.		E	

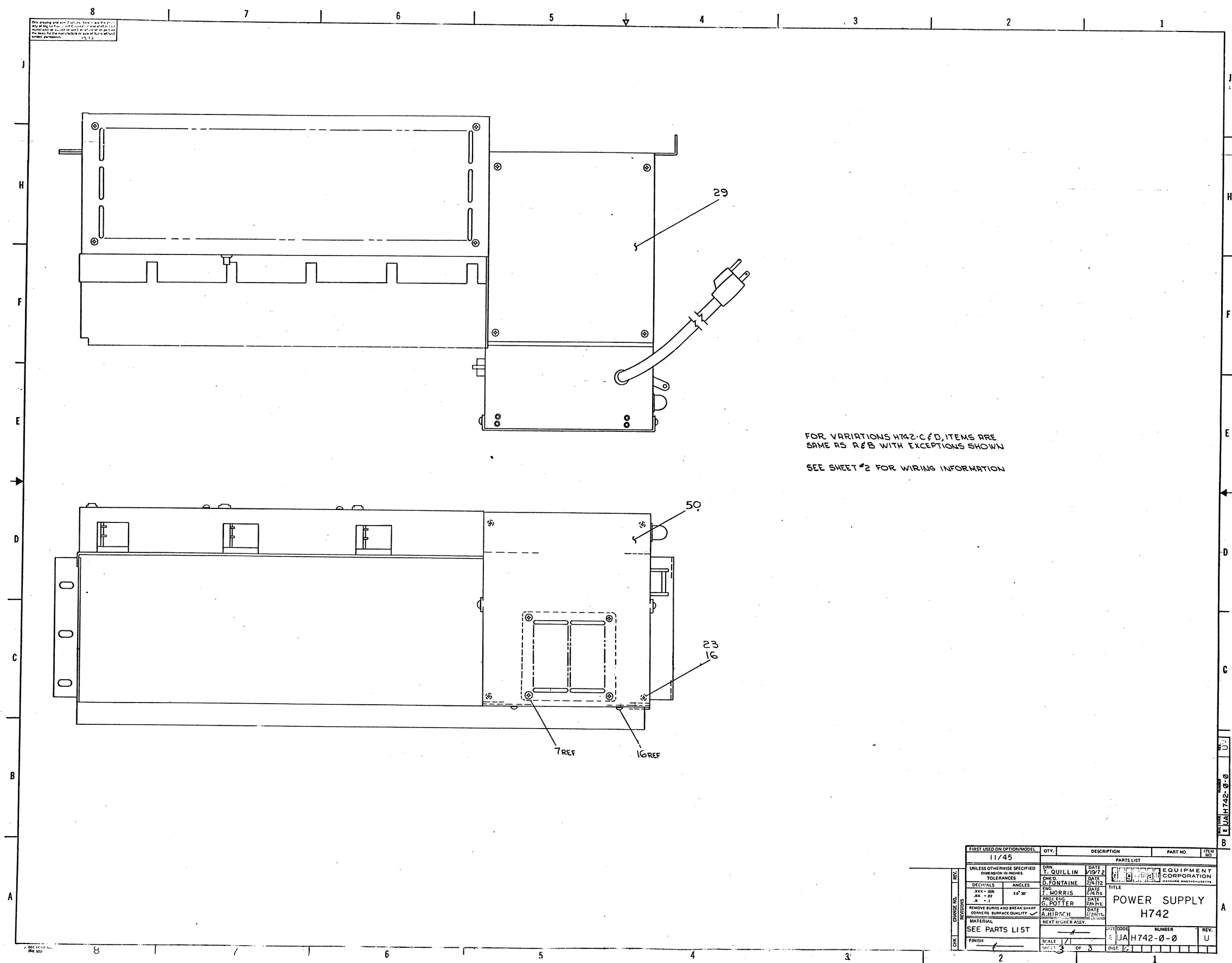




WIRE TABLE									
ITEM NO.	DESCRIPTION	FROM		TO		REMARKS			
		CONN	WITH	CONN	WITH				
34	18 WHT	C2-1	SOLDER	TB1-3	35	SEE NOTE #5			
34	18 WHT	J2-3	18,21						
34	18 RED	J2-7	18,21						
34	18 RED	C2-3	SOLDER	TB1-1	35				
6		TI-5		TB2-7	35				
		TI-6		TB2-8					
		TI-7		TB2-3					
		TI-8		TB2-4					
		TI-9		TB2-5					
		TI-10		TB2-6	35				
		TI-11		J2-8	21,18				
		TI-12		J2-10	21,15				
		TI-13		J2-9	21,18				
		TI-14		J2-12	21,18				
		TI-15		TB2-9	35				
6		TI-16		TB2-10	35				
12	BLK	LI-1		TB1-1	39				
12	RED	LI-2		TB1-3	39				
34	18 RED	TB1-2	39	F1-1	SOLDER	TWISTED PAIR			
43	18 WHT	TB1-4	39	F1-2	SOLDER				
43	18 RED	C1-2	SOLDER	C2-3	SOLDER				
43	18 RED	C1-2	SOLDER	C1-3	SOLDER				
11	16 WHT	MI-1		CB1-3	35	POWER CORD			
11	16 BLK	MI-2		CB1-4	35				
11	16 GRN	MI-3		TB2-1	23,38				
32	14 RED	TB2-3	35	J3-1	19,21				
		TB2-3		J3-3					
		TB2-4		J3-2					
		TB2-4		J3-4					
		TB2-5		J3-5					
		TB2-5		J3-7					
		TB2-6		J3-6					
		TB2-6		J3-8	19,21				
32	14 RED	TB2-7	35	J2-1	18,21				
32	14 RED	TB2-8	35	J2-2	18,21				
6	BLK	TB1-3	35	TI-2					
6	BLK	TB1-1	35	TI-1					
6	BLK	TB1-4	35	TI-4					
6	BLK	TB1-2	35	TI-3					
34	18 RED	J2-5	18,21	TB1-2	35	SEE NOTE #5			
34	18 RED	C1-3	SOLDER						
34	18 WHT	J2-6	18,21						
34	18 WHT	C1-1	SOLDER	TB1-4	35				
34	18 RED	F4-1	45,46	F3-1	45,46	TWISTED PAIR			
34	18 WHT	F4-2	45,46	F3-2	45,46				
34	18 RED	F3-1	45,46	F2-1	45,46	TWISTED PAIR			
34	18 WHT	F3-2	45,46	F2-2	45,46				
34	18 RED	F2-1	45,46	P2-7 *	22	TWISTED PAIR			
34	18 WHT	F2-2	45,46	P2-3 *	22				
32	14 WHT	CB1-1	35	TB1-4	35				
32	14 RED	CB1-2	35	TB1-1	35				
62	14 GRN	J2-4	21	TB2-1	23,38				



FIRST USED ON OPTION/MODEL		QTY.	DESCRIPTION	PART NO.	ITEM NO.
11/45					
PARTS LIST					
UNLESS OTHERWISE SPECIFIED DIMENSIONS IN INCHES TOLERANCES					
DECIMALS	ANGLES				
.015 - .001	° - 01	10° 30'			
.001 - .002	° - 02				
.002 - .005	° - 05				
REMOVE BURRS AND BREAK SHARP CORNERS SURFACE QUALITY					
MATERIAL					
SEE PARTS LIST					
NEXT HIGHER ASSY.					
FINISH					
SCALE					
DATE					
DRAWN BY					
CHECKED BY					
DATE					
TITLE					
POWER SUPPLY					
H742					
EQUIPMENT CORPORATION					
REVISIONS					
REV.	NO.	DATE	BY	DESCRIPTION	
1	1				
2	2				
3	3				
4	4				
5	5				
6	6				
7	7				
8	8				
9	9				
10	10				
11	11				
12	12				
13	13				
14	14				
15	15				
16	16				
17	17				
18	18				
19	19				
20	20				
21	21				
22	22				
23	23				
24	24				
25	25				
26	26				
27	27				
28	28				
29	29				
30	30				
31	31				
32	32				
33	33				
34	34				
35	35				
36	36				
37	37				
38	38				
39	39				
40	40				
41	41				
42	42				
43	43				
44	44				
45	45				
46	46				
47	47				
48	48				
49	49				
50	50				
51	51				
52	52				
53	53				
54	54				
55	55				
56	56				
57	57				
58	58				
59	59				
60	60				
61	61				
62	62				
63	63				
64	64				
65	65				
66	66				
67	67				
68	68				
69	69				
70	70				
71	71				
72	72				
73	73				
74	74				
75	75				
76	76				
77	77				
78	78				
79	79				
80	80				
81	81				
82	82				
83	83				
84	84				
85	85				
86	86				
87	87				
88	88				
89	89				
90	90				
91	91				
92	92				
93	93				
94	94				
95	95				
96	96				
97	97				
98	98				
99	99				
100	100				



DIGITAL EQUIPMENT CORPORATION
MAYNARD, MASSACHUSETTS
PARTS LIST

MADE BY T. QUILLIN
DATE 1/19/72
ENG *B. Potter* 2/4/72
DATE 2-24-72
CHECKED D. FONTAINE
DATE 1/26/72
PROD *B. Potter*
DATE 2-24-72
SECTION 1
ISSUED SECT. 1

ITEM NO.	DWG NO. / PART NO.	DESCRIPTION
1	E-IA-5309755-0-0	CHASSIS
2	D-IA-5309854-0-0	CONTROL BOX POWER
3	D-MD-5309850-0-0	POWER CONTROL COVER
4	1209403-1	FAN, BOXER
5	5409730-0-0	POWER CONTROL BOARD
6	16-10857	XMFR
7	1210719	FAN PFWGE, BOXER
8	9006916	JONES STRIP (12 CONN) 540
9	9006902	JONES STRIP (4 CONN) 540
10	9008309	STRAIN RELIEF
11	1700006-6	CORD, POWER (115V)
12	1211263	LIGHT, PILOT
13	1210191-3	CIRCUIT BREAKER 15 AMP
14	9006025-1	SCR. PHL PAN HD #6 X 32 X 5/8 LG
15	9006071-3	SCR. PHL TRUSS HD #10-32 X 3/8 LG
16	9006020-1	SCR. PHL PAN HD #6-32 X 1/4 LG
17	9009002	MECHANICAL JUMPER
18	1209350-15	MATE-N-LOCK 15 PIN (FEMALE)
19	1209350-09	MATE-N-LOCK 9 PIN (FEMALE)
20	1209351-04	MATE-N-LOCK 4 PIN (FEMALE)
21	1209379-01	CONTACTS (FEMALE)
22	1209378-01	CONTACTS (MALE)

TITLE

H742, POWER CONTROL

ASSY NO.
E-UA-H742-0-0
SHEET 1 OF 4

SIZE CODE
A PL
DIST. G

NUMBER
H742-0-0

REV
H742-00021

DEC FORM DEC 16-(325)-1031-N870
DRA 110

DIGITAL EQUIPMENT CORPORATION
MAYNARD, MASSACHUSETTS
PARTS LIST

MADE BY T. QUILLIN
DATE 1-19-72
ENG *B. Potter*
DATE 2-14-72
CHECKED D. FONTAINE
DATE 1-26-72
PROD *B. Potter*
DATE 2-24-72
SECTION 1
ISSUED SECT. 1

ITEM NO.	DWG NO. / PART NO.	DESCRIPTION
23	9007649	L'WASH #6 EXT
24	9006453	#6-32 SEMS X 3/8 LG
25	9007033	TY WRAP HOLDER
26	9007651	L'WASH #10 EXT
27	9006560	KEPS NUT #6-32
28	9006022-1	SCR. PHL HD PAN #6-32 X .38
29	D-IA-74-09701-0-0	BRACKET, POWER SUPPLY
30	9007113	DOUBLE UPRIGHT 90
31	9007269	DOUBLE 45°
32	9107370-22	#14 AWG 19 STRAND PVC. INS. (RED)
33	9009165	FAN MTG CLIP
34	9107530-29	#18 AWG 19 STRAND PVC. INS. (RED/WHT) TWP
35	9007919	FASTON TAB (.250 SERIES) BLU
36	10-10193	CAPACITOR 2 X .1 uf @ 1000V
37	9007920	FASTON TAB (.250 SERIES) RED
38	9007927	RING TERMINAL BLU
39	9007917	FASTON TAB (.250 SERIES) RED
40	9007112	SINGLE FLAT
41	6-1A-5309854-0-0	POWER CONTROL BOX
42	1700016-6	CORD POWER (230V)
43	9107360-22	#18 AWG 19 STRAND PVC. INS. (RED)
44	9007793-1	SCR PHL PAN HD #6-32 X 9/16 LG

TITLE

H742 POWER CONTROL

ASSY NO.
E-UA-H742-0-0
SHEET 2 OF 4

SIZE CODE
A PL
DIST. G

NUMBER
H742-0-0

REV
H742-00021

DIGITAL EQUIPMENT CORPORATION
MAYNARD, MASSACHUSETTS
PARTS LIST

MADE BY T. QUILLIN
DATE 1-19-72
ENG *B. Potter*
DATE 2-14-72
CHECKED D. FONTAINE
DATE 1-26-72
PROD *B. Potter*
DATE 2-24-72
SECTION 1
ISSUED SECT. 1

ITEM NO.	DWG NO. / PART NO.	DESCRIPTION
23	9007649	L'WASH #6 EXT
24	9006453	#6-32 SEMS X 3/8 LG
25	9007033	TY WRAP HOLDER
26	9007651	L'WASH #10 EXT
27	9006560	KEPS NUT #6-32
28	9006022-1	SCR. PHL HD PAN #6-32 X .38
29	D-IA-74-09701-0-0	BRACKET, POWER SUPPLY
30	9007113	DOUBLE UPRIGHT 90
31	9007269	DOUBLE 45°
32	9107370-22	#14 AWG 19 STRAND PVC. INS. (RED)
33	9009165	FAN MTG CLIP
34	9107530-29	#18 AWG 19 STRAND PVC. INS. (RED/WHT) TWP
35	9007919	FASTON TAB (.250 SERIES) BLU
36	10-10193	CAPACITOR 2 X .1 uf @ 1000V
37	9007920	FASTON TAB (.250 SERIES) RED
38	9007927	RING TERMINAL BLU
39	9007917	FASTON TAB (.250 SERIES) RED
40	9007112	SINGLE FLAT
41	6-1A-5309854-0-0	POWER CONTROL BOX
42	1700016-6	CORD POWER (230V)
43	9107360-22	#18 AWG 19 STRAND PVC. INS. (RED)
44	9007793-1	SCR PHL PAN HD #6-32 X 9/16 LG

TITLE

H742 POWER CONTROL

ASSY NO.
E-UA-H742-0-0
SHEET 2 OF 4

SIZE CODE
A PL
DIST. G

NUMBER
H742-0-0

REV
H742-00021

DIGITAL EQUIPMENT CORPORATION
MAYNARD, MASSACHUSETTS
PARTS LIST

PARTS LIST

MADE BY	T. Quillin	CHECKED	D. Fontaine	SECTION
DATE	1/19/72	DATE	1/26/72	1
ENG	G. POTTER	PROD	A. HIRSCH	ISSUED SECT.
DATE	2-14-72	DATE	2-24-72	1

ITEM NO.	DWG NO. / PART NO.	DESCRIPTION
----------	--------------------	-------------

ITEM NO.	DWG NO. / PART NO.	DESCRIPTION	H74	H74	H74	H74
45	12-10820-1	CONNECTOR, HOUSING	6	6	6	6
46	12-10820-2	CONNECTOR, PIN	6	6	6	6
47	9006022-3	SCR, PHL, TRUSS HD. #6-32 X 3/8 LG.	4	4	4	4
48	9006558	NUT, HEX #6-32 X 5/16 X 1/8	3	3	3	3
49	9009228	SCR PHL PAN HD, 10-32 X 3/8 SEMS	10	10	10	10
50	C-MD-74-09702-0-0	COVER, POWER CONTROL	-	-	-	-
51	D-1A-5309654-3-0	POWER CONTROL BOX	=	=	=	=
52	D-1A-5309654-4-0	"	=	=	=	=
53	9006796	SPACER #6-32 X 3/16 LG SST	-	-	-	-
54	A-PI-3700073-0-0	H742 POWER SUPPLY INTERPLANT PACKAGE	1	1	1	1
55	C-1A-7009737-0-0	MINI BOXER FAN SCREEN	1	1	1	1
56	9006024-1	SCR, PHL, PAN HD. #6-32 X 1/2 LG	12	12	12	12
57	A-DC-5310459-0-0	DECAL, H742A	1	-	-	-
58	A-DC-5310460-0-0	DECAL, H742B	-	1	-	-
59	A-DC-5310461-0-0	DECAL, H742C	-	-	1	-
60	A-DC-5310462-0-0	DECAL, H742D	-	-	-	1
61	1611444	BALUN ASSEMBLY	1	1	1	1
62	9107370-55	* 14 AWG IPVC STRANDED, GREEN	A/R	A/R	A/R	A/R
63	9006633	LOCK WASHER, #6 INT. TOOTH	8	8	8	8
64	9007993-1	SCR. PHL. PAN HD. 6-32 X 9/16LG	12	12	12	12
65	9008208	FAN MTG. CLIP	12	12	12	12
		* SEE NOTE 4 ON E-UA-H742-0-0				

TITL

H742 POWER CONTROL

DEC FORM DEC 16--(325)--1031--N870
DRA 110

ASSY NO.		SIZE	CODE	NUMBER	REV	ECONO.
E-UA-H742-0-0		A		PL	U	
SHEET 3 OF 4		DIST.				

DIGITAL EQUIPMENT CORPORATION
MAYNARD, MASSACHUSETTS

PARTS LIST

MADE BY T. QUILLIN		CHECKED D. FONTAINE		SECTION
DATE	1-19-72	DATE	1-26-72	1
ENG	G. POTTER	PROD	A. HIRSCH	ISSUED SECT.
DATE	2-14-72	DATE	2-24-72	1

ITEM NO.	DWG NO. / PART NO.	DESCRIPTION
-------------	--------------------	-------------

[illegible]

三

H742 POWER CONTROL

ASSY NO.
E-UA-H742-O-O

SIZE	CODE
A	PL

NUMBER
H742-0-0

REV.	ECO NO.
U	

DEC FORM DEC 16--(325)--1031--N870
DRA 110