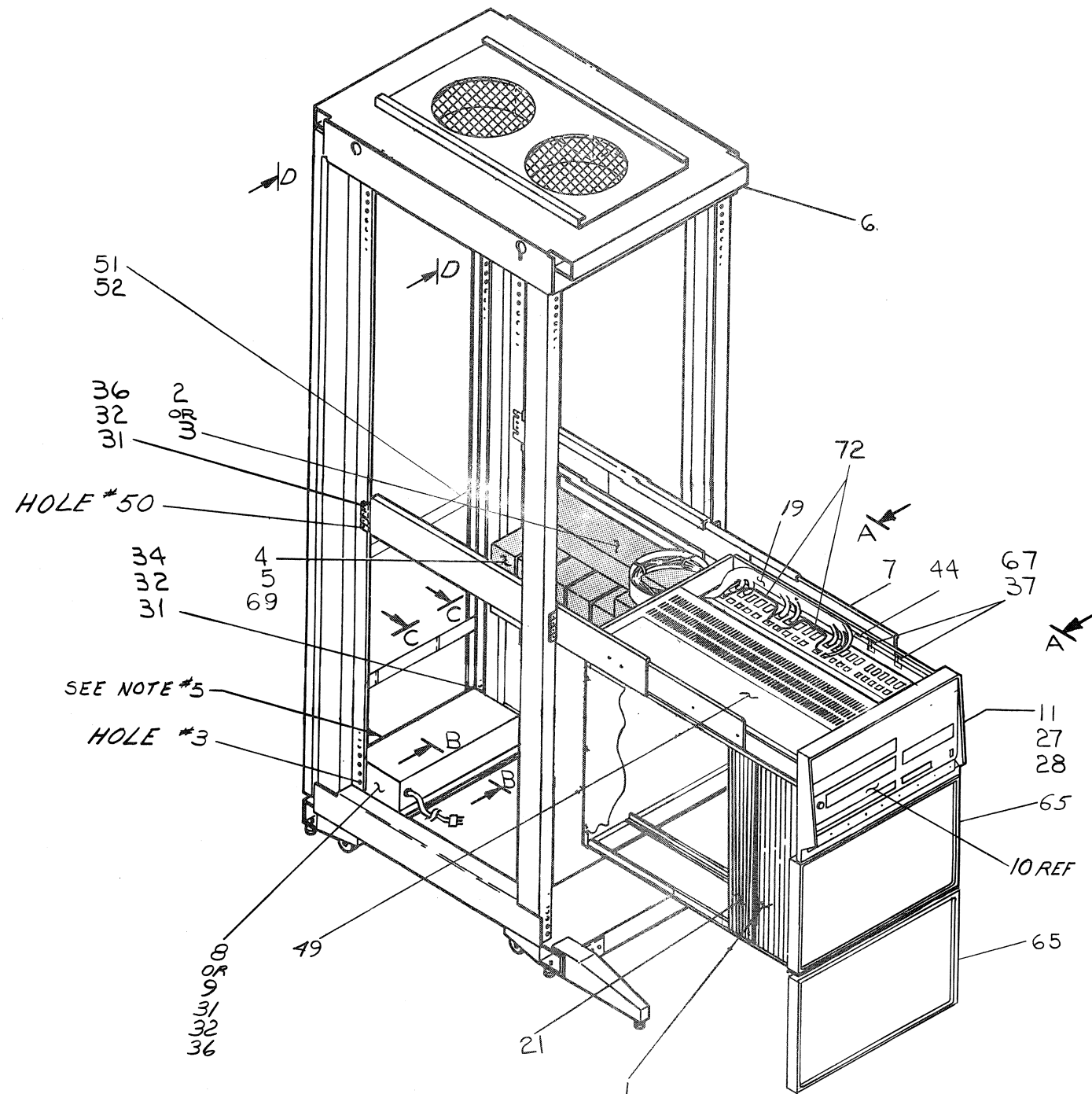


This drawing and specifications, herein, are the property of Digital Equipment Corporation and shall not be reproduced or copied or used in whole or in part as the basis for the manufacture or sale of items without written permission. COPYRIGHT © 1972 DIGITAL EQUIP CORP

LEGEND	
NUMBER	VARIATION
11/40-CA	115 V, 60HZ
11/40-CB	230 V, 50HZ
11/40-CS	115 V, 60HZ
11/40-CT	230 V, 50HZ

- NOTES:
1. A.C. CONNECTION FOR CABINET FAN MAY BE ON BRACKET (VIEW D-D) OR ON JONES STRIP ON INTERIOR OF REAR SIDE OF CABINET MOUNTING CHANNEL.
  2. FOR SYSTEMS CONFIGURATIONS NOT LISTED REFER TO C-PL-11/40-0-3.
  3. BEHIND EACH 10 1/2" PANEL INSTALL (4) 3/8" SPACERS.
  4. FOR VARIATIONS CS & CT SEE SHT. #5 VARIATIONS CA & CB ON SHT. #1 ONLY.
  5. TOP OF CABINET FAN AND H742 POWER SUPPLY MUST BE PLUGGED INTO LINE 1 OUTLETS ON THE 861 POWER CONTROL
  6. MAIN HARNESS (ITEM #19) HAS TWO (2) UNUSED 8-PIN PLUGS (PI6 AND EITHER PI5 OR PI7). TO PREVENT DAMAGE TO REGULATORS INSERT AN EMPTY MATING CONN. (ITEM #74) INTO THEM AND TIE THEM OUT OF THE WAY, ALSO ADD OR REMOVE JUMPERS PER DIG7009566-0-1

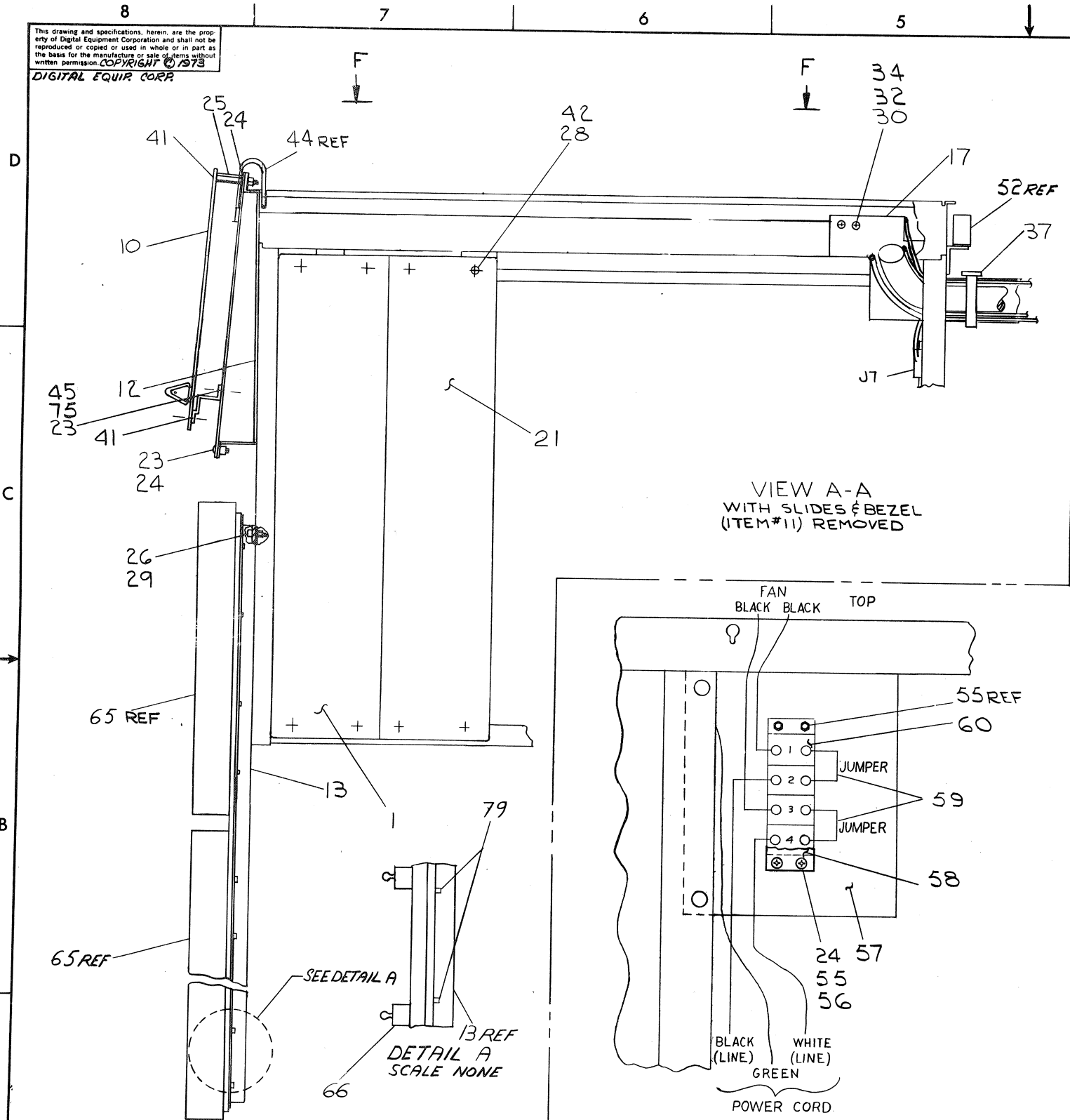


VARIATION CA & CB (ONLY)

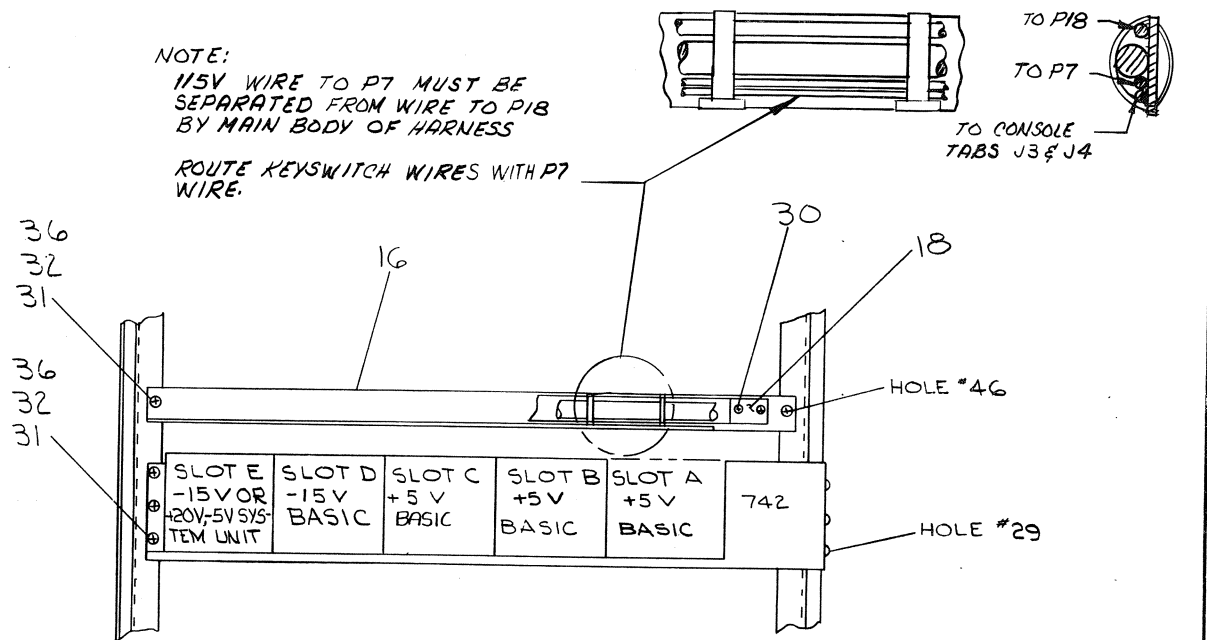
REV.	CHANGE NO.	DESCRIPTION
F	11/40-00010A	REVISED AND REDRAWN
H	11/40-00011	B. MINOR
J	11/40-00012	B. MINOR
K	11/40-00014	B. MINOR
L	11/40-00015	B. MINOR
M	11/40-00016	B. MINOR
N	11/40-00017	B. MINOR
O	11/40-00018	B. MINOR
P	11/40-00019	B. MINOR
Q	11/40-00020	B. MINOR
R	11/40-00021	B. MINOR
S	11/40-00022	B. MINOR
T	11/40-00023	B. MINOR
U	11/40-00024	B. MINOR
V	11/40-00025	B. MINOR
W	11/40-00026	B. MINOR
X	11/40-00027	B. MINOR
Y	11/40-00028	B. MINOR
Z	11/40-00029	B. MINOR
AA	11/40-00030	B. MINOR
AB	11/40-00031	B. MINOR
AC	11/40-00032	B. MINOR
AD	11/40-00033	B. MINOR
AE	11/40-00034	B. MINOR
AF	11/40-00035	B. MINOR
AG	11/40-00036	B. MINOR
AH	11/40-00037	B. MINOR
AI	11/40-00038	B. MINOR
AJ	11/40-00039	B. MINOR
AK	11/40-00040	B. MINOR
AL	11/40-00041	B. MINOR
AM	11/40-00042	B. MINOR
AN	11/40-00043	B. MINOR
AO	11/40-00044	B. MINOR
AP	11/40-00045	B. MINOR
AQ	11/40-00046	B. MINOR
AR	11/40-00047	B. MINOR
AS	11/40-00048	B. MINOR
AT	11/40-00049	B. MINOR
AU	11/40-00050	B. MINOR
AV	11/40-00051	B. MINOR
AW	11/40-00052	B. MINOR
AX	11/40-00053	B. MINOR
AY	11/40-00054	B. MINOR
AZ	11/40-00055	B. MINOR
BA	11/40-00056	B. MINOR
BB	11/40-00057	B. MINOR
BC	11/40-00058	B. MINOR
BD	11/40-00059	B. MINOR
BE	11/40-00060	B. MINOR
BF	11/40-00061	B. MINOR
BG	11/40-00062	B. MINOR
BH	11/40-00063	B. MINOR
BI	11/40-00064	B. MINOR
BJ	11/40-00065	B. MINOR
BK	11/40-00066	B. MINOR
BL	11/40-00067	B. MINOR
BM	11/40-00068	B. MINOR
BN	11/40-00069	B. MINOR
BO	11/40-00070	B. MINOR
BP	11/40-00071	B. MINOR
BQ	11/40-00072	B. MINOR
BR	11/40-00073	B. MINOR
BS	11/40-00074	B. MINOR
BT	11/40-00075	B. MINOR
BU	11/40-00076	B. MINOR
BV	11/40-00077	B. MINOR
BW	11/40-00078	B. MINOR
BX	11/40-00079	B. MINOR
BY	11/40-00080	B. MINOR
BZ	11/40-00081	B. MINOR
CA	11/40-00082	B. MINOR
CB	11/40-00083	B. MINOR
CC	11/40-00084	B. MINOR
CD	11/40-00085	B. MINOR
CE	11/40-00086	B. MINOR
CF	11/40-00087	B. MINOR
CG	11/40-00088	B. MINOR
CH	11/40-00089	B. MINOR
CI	11/40-00090	B. MINOR
CJ	11/40-00091	B. MINOR
CK	11/40-00092	B. MINOR
CL	11/40-00093	B. MINOR
CM	11/40-00094	B. MINOR
CN	11/40-00095	B. MINOR
CO	11/40-00096	B. MINOR
CP	11/40-00097	B. MINOR
CQ	11/40-00098	B. MINOR
CR	11/40-00099	B. MINOR
CS	11/40-00100	B. MINOR

FIRST USED ON OPTION/MODEL	QTY.	DESCRIPTION	PART NO.	ITEM NO.
PDPI 1/40				
UNLESS OTHERWISE SPECIFIED DIMENSION IN INCHES. TOLERANCES	DRN. <i>St. Lander</i>	DATE 7/17/72	PARTS LIST	
DECIMALS	CHK'D. <i>C. Eschner</i>	DATE 7/27/72	digital EQUIPMENT CORPORATION	
ANGLES	ENG. <i>C. Eschner</i>	DATE 7/27/72	MAYNARD, MASSACHUSETTS	
REMOVE BURRS AND BREAK SHARP CORNERS SURFACE QUALITY	PBD. ENG. <i>P. B. Eschner</i>	DATE 7/27/72	TITLE	
MATERIAL	PROD. <i>P. B. Eschner</i>	DATE 7/27/72	BASIC ASSY (11/40)	
FINISH	NEXT HIGHER ASSY.		SIZE CODE	NUMBER
	B-DD-11/40		DUA 11/40-0-0	REV. L
	SCALE		DIST.	
	SHEET 1 OF 6			

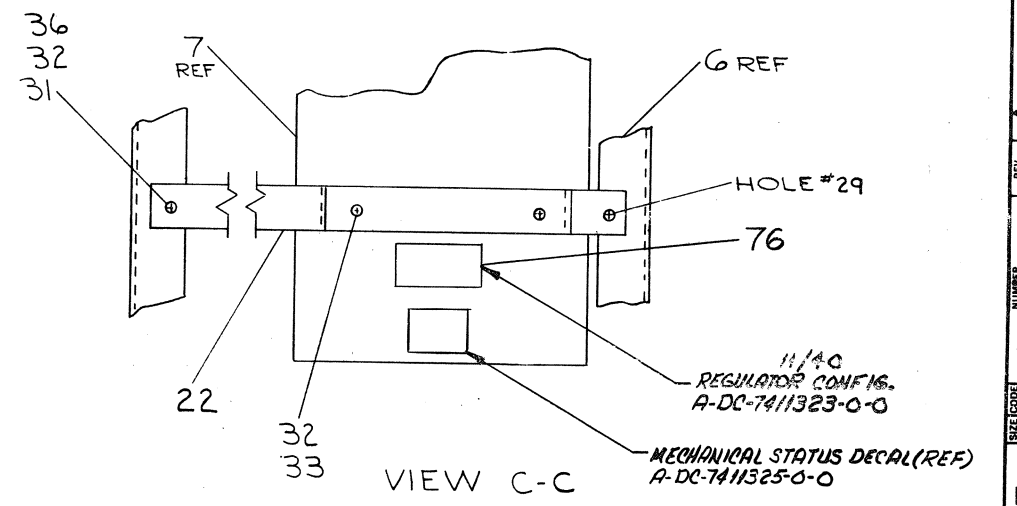
This drawing and specifications, herein, are the property of Digital Equipment Corporation and shall not be reproduced or copied or used in whole or in part as the basis for the manufacture or sale of items without written permission. COPYRIGHT © 1973 DIGITAL EQUIP CORP.



VIEW D-D  
FAN WIRING  
(TOP OF CABINET)



VIEW B-B



VIEW C-C

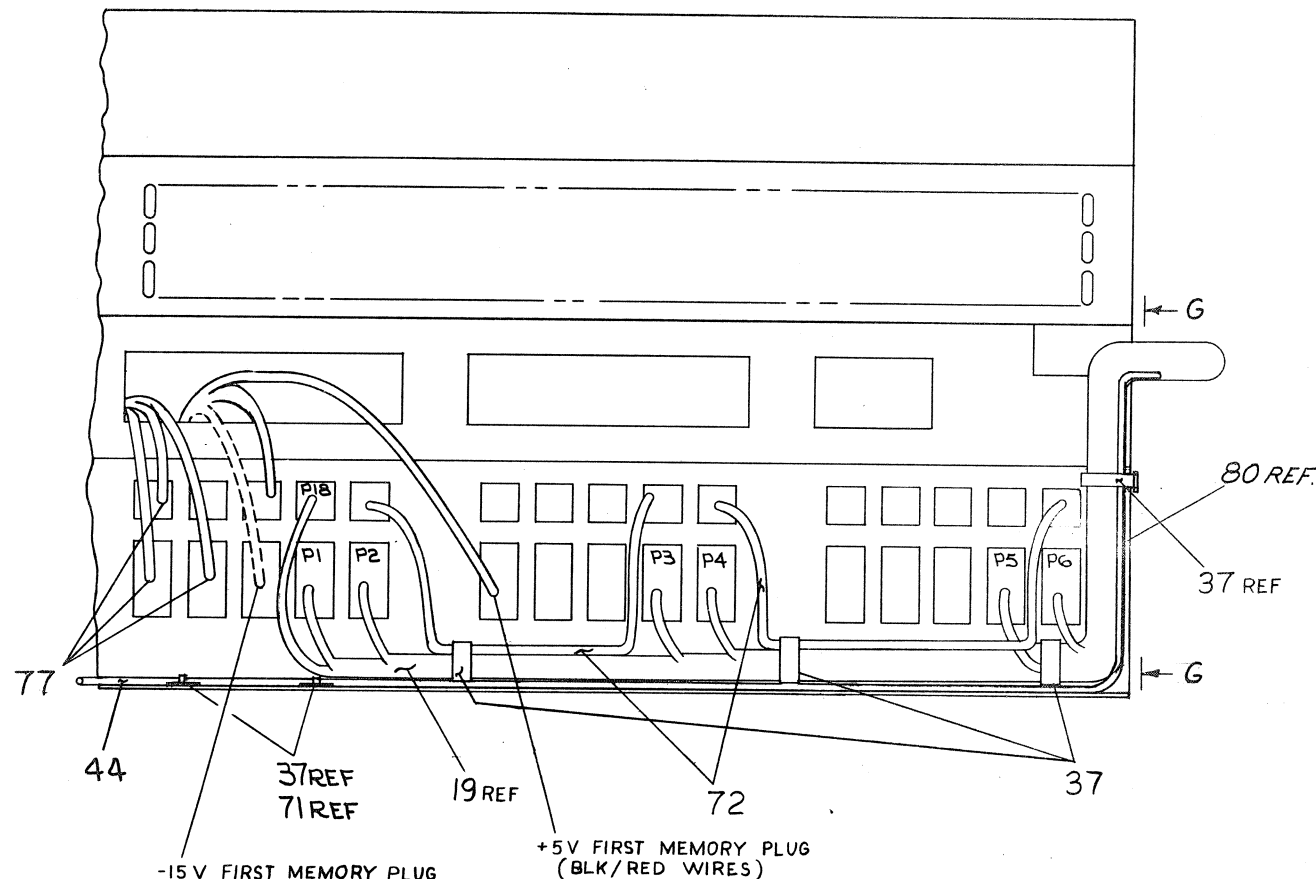
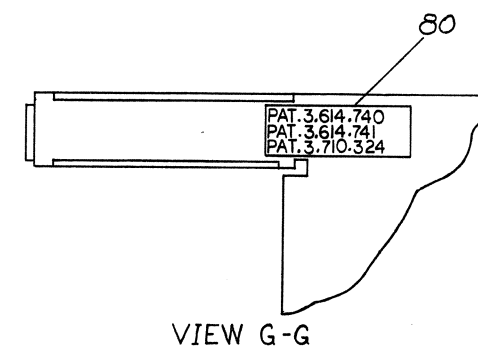
FIRST USED ON OPTION/MODEL	QTY.	DESCRIPTION	PART NO.	ITEM NO.
PARTS LIST				
UNLESS OTHERWISE SPECIFIED DIMENSION IN INCHES TOLERANCES	DRN G. FLANDER DATE 7-19-72	DATE 7-19-72	<b>digital EQUIPMENT CORPORATION</b> MAYNARD MASSACHUSETTS	
DECIMALS	CHK'D C. TESCHNER DATE 9-22-72	DATE 9-22-72		
ANGLES	ENG C.K. BLASI DATE 9-22-72	DATE 9-22-72		
XXX = .005 XX = .02 X = .1	PROJ ENG J.F. LOUGHLIN DATE 9-22-72	DATE 9-22-72		
REMOVE BURRS AND BREAK SHARP CORNERS SURFACE QUALITY	PROD G. STRINGER DATE 9-26-72	DATE 9-26-72		
MATERIAL	NEXT HIGHER ASSY.	SIZE CODE	BASIC ASSY (11/40)	
FINISH	SCALE	NUMBER		
SHEET 2 OF 6			DUA 11/40-0-0	

REV	CHANGE NO.
1	1

DEC FORM NO. DRD 100-A

"THIS DRAWING AND SPECIFICATIONS, HEREIN, ARE THE PROPERTY OF DIGITAL EQUIPMENT CORPORATION AND SHALL NOT BE REPRODUCED OR COPIED OR USED IN WHOLE OR IN PART AS THE BASIS FOR THE MANUFACTURE OR SALE OF ITEMS WITHOUT WRITTEN PERMISSION.  
COPYRIGHT © 1973, DIGITAL EQUIPMENT CORPORATION"

0-0-07/11/40 2



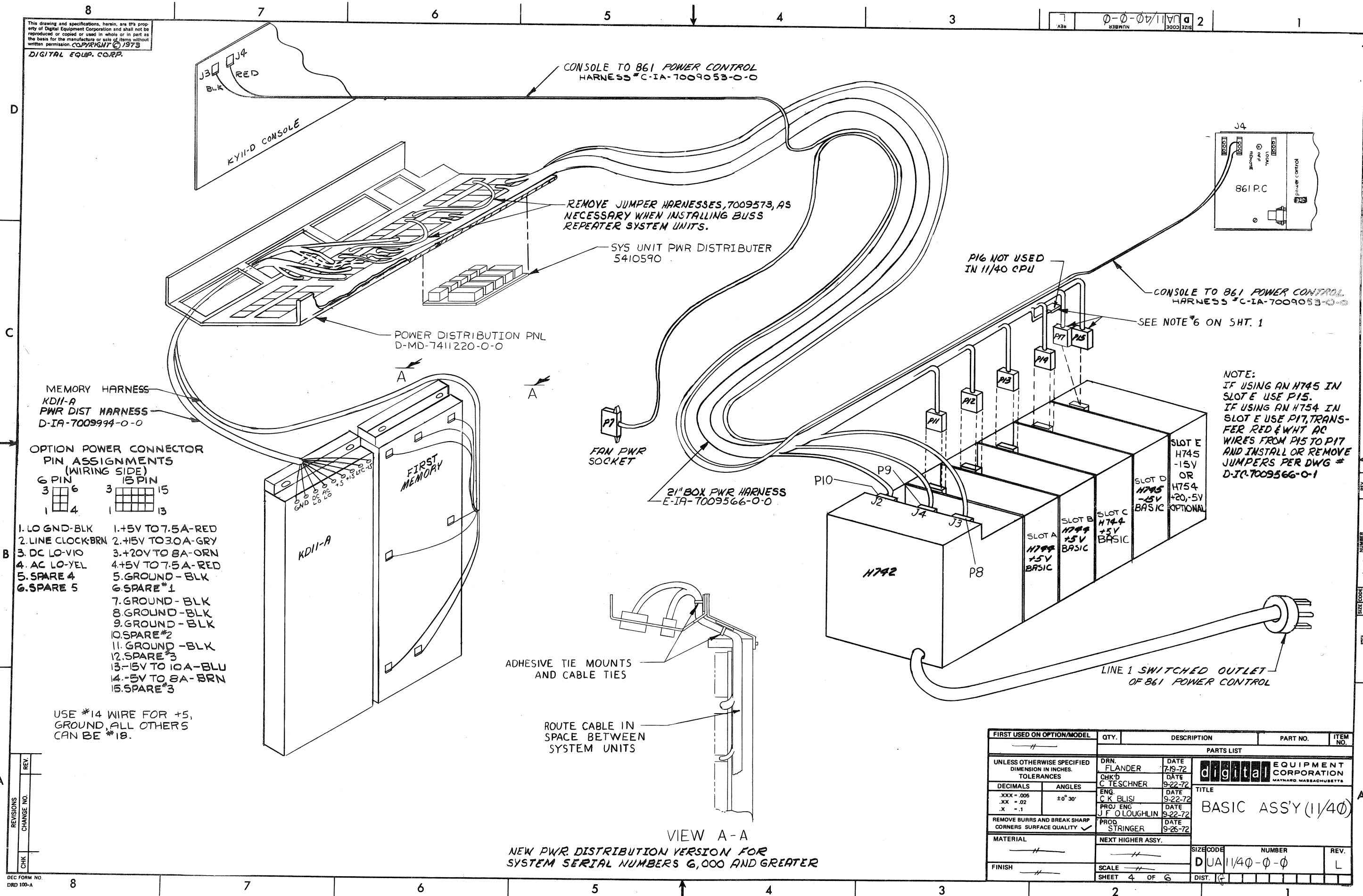
VIEW F-F  
(ENLARGED VIEW)

FIRST USED ON OPTION/MODEL	QTY.	DESCRIPTION	PART NO.	ITEM NO.
PARTS LIST				
UNLESS OTHERWISE SPECIFIED DIMENSION IN INCHES	DRN. G. FLANDER	DATE 7-19-72	<b>digital</b> EQUIPMENT CORPORATION MAYNARD, MASSACHUSETTS	
TOLERANCES	CHK'D. C. TESCHNER	DATE 9-22-72		
DECIMALS	ENG. C. K. BLASI	DATE 9-22-72	TITLE BASIC ASSY (11/40)	
ANGLES	PROJ. ENG. J. F. LOUGHLIN	DATE 9-22-72		
REMOVE BURRS AND BREAK SHARP CORNERS SURFACE QUALITY V	PROD. G. STRINGER	DATE 9-26-72	SIZE CODE D UA 11/40-0-0	
MATERIAL	NEXT HIGHER ASSY.			
FINISH	SCALE		REV. L	
	SHEET 3 OF 6			

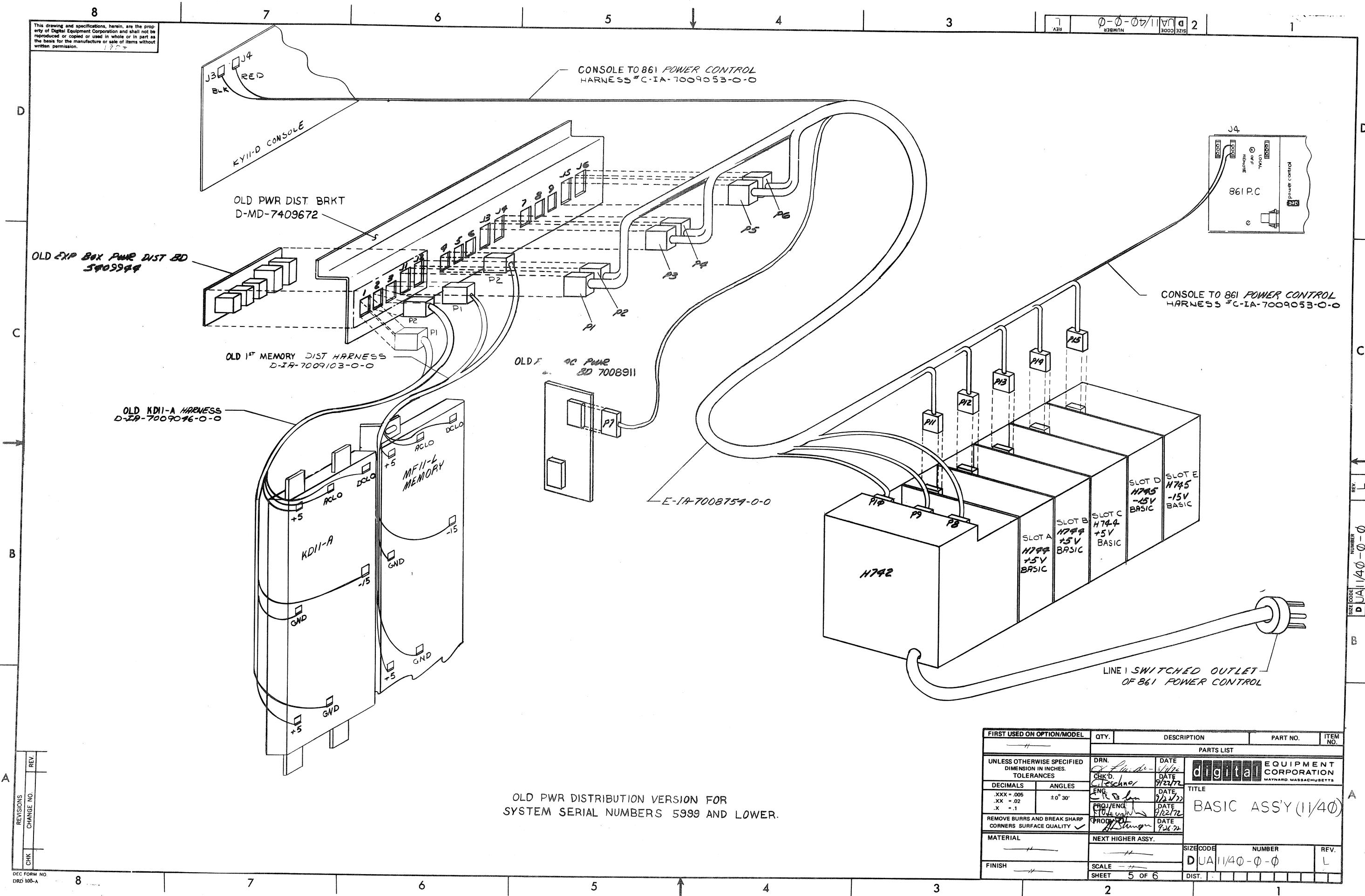
REV.	CHANGE NO.
1	1

DEC FORM NO. 105-B

This drawing and specifications, herein, are the property of Digital Equipment Corporation and shall not be reproduced or copied or used in whole or in part as the basis for the manufacture or sale of items without written permission. COPYRIGHT © 1973  
DIGITAL EQUIP. CORP.



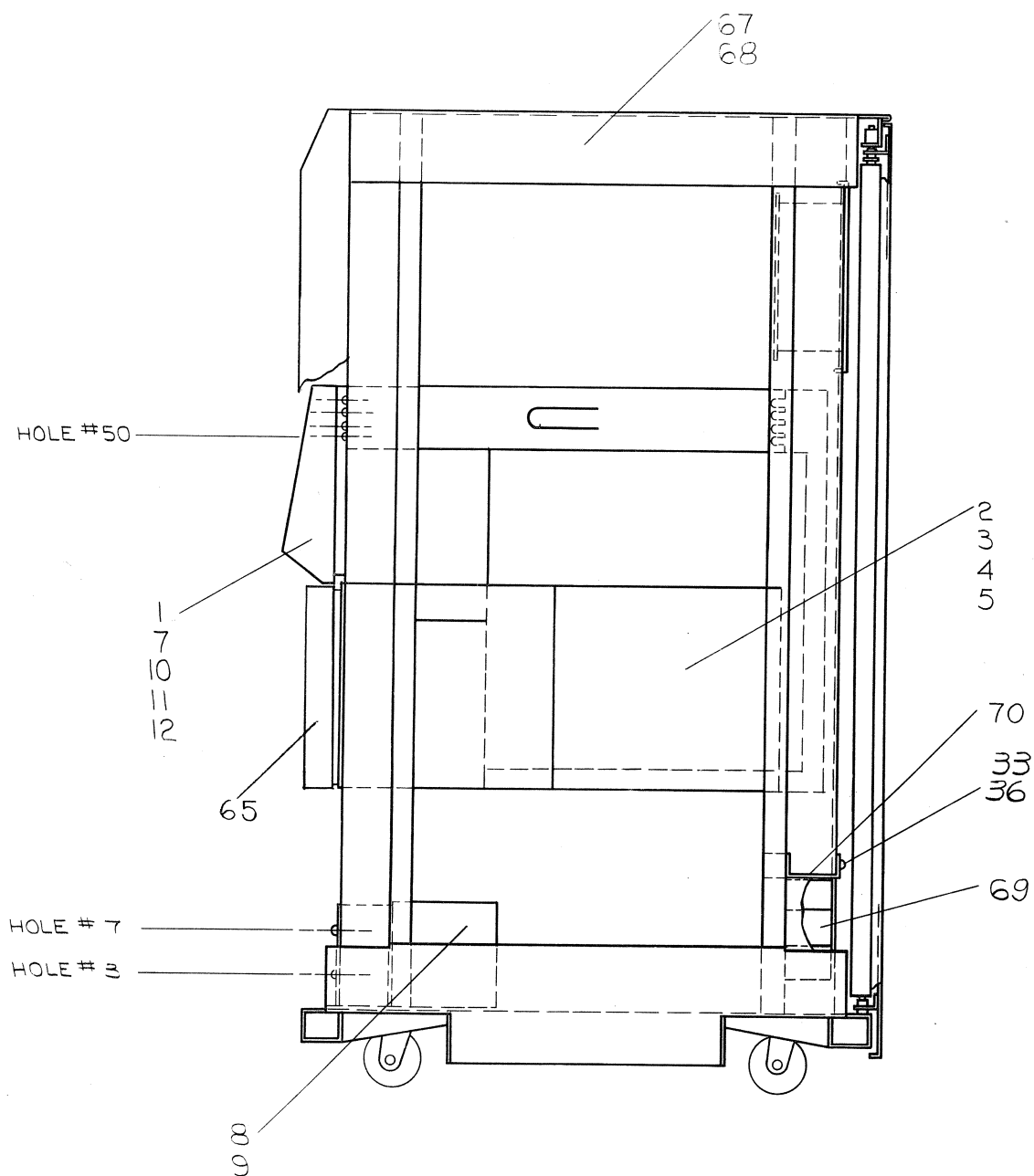




FIRST USED ON OPTION MODEL		QTY.	DESCRIPTION	PART NO.	ITEM NO.
—//—		PARTS LIST			
UNLESS OTHERWISE SPECIFIED DIMENSION IN INCHES. TOLERANCES		DRN. <i>1/4 in</i>	DATE <i>5/1/72</i>	<div style="display: flex; align-items: center;"> <div style="border: 1px solid black; padding: 2px; margin-right: 5px;">digital</div> <div> <b>EQUIPMENT CORPORATION</b>  <small>MAYNARD MASSACHUSETTS</small> </div> </div>	
		CHK'D <i>C. Escobar</i>	DATE <i>9/23/72</i>		
DECIMALS	ANGLES	ENG. <i>C. R. for</i>	DATE <i>9/23/72</i>	TITLE  <div style="font-size: 2em; font-weight: bold;">BASIC ASS'Y (11/40)</div>	
XXX ± .005 XX ± .02 X ± .1	± 0° 30'	PROJ/ENG <i>11/24/72</i>	DATE <i>9/23/72</i>		
REMOVE BURRS AND BREAK SHARP CORNERS SURFACE QUALITY ✓		PROD'D <i>11/24/72</i>	DATE <i>9/23/72</i>		
MATERIAL	NEXT HIGHER ASSY.		SIZE CODE	NUMBER	REV.
—//—	—//—		D	UA 11/40-0-0	L
FINISH	SCALE				
—//—	SHEET 5 OF 6		DIST.		

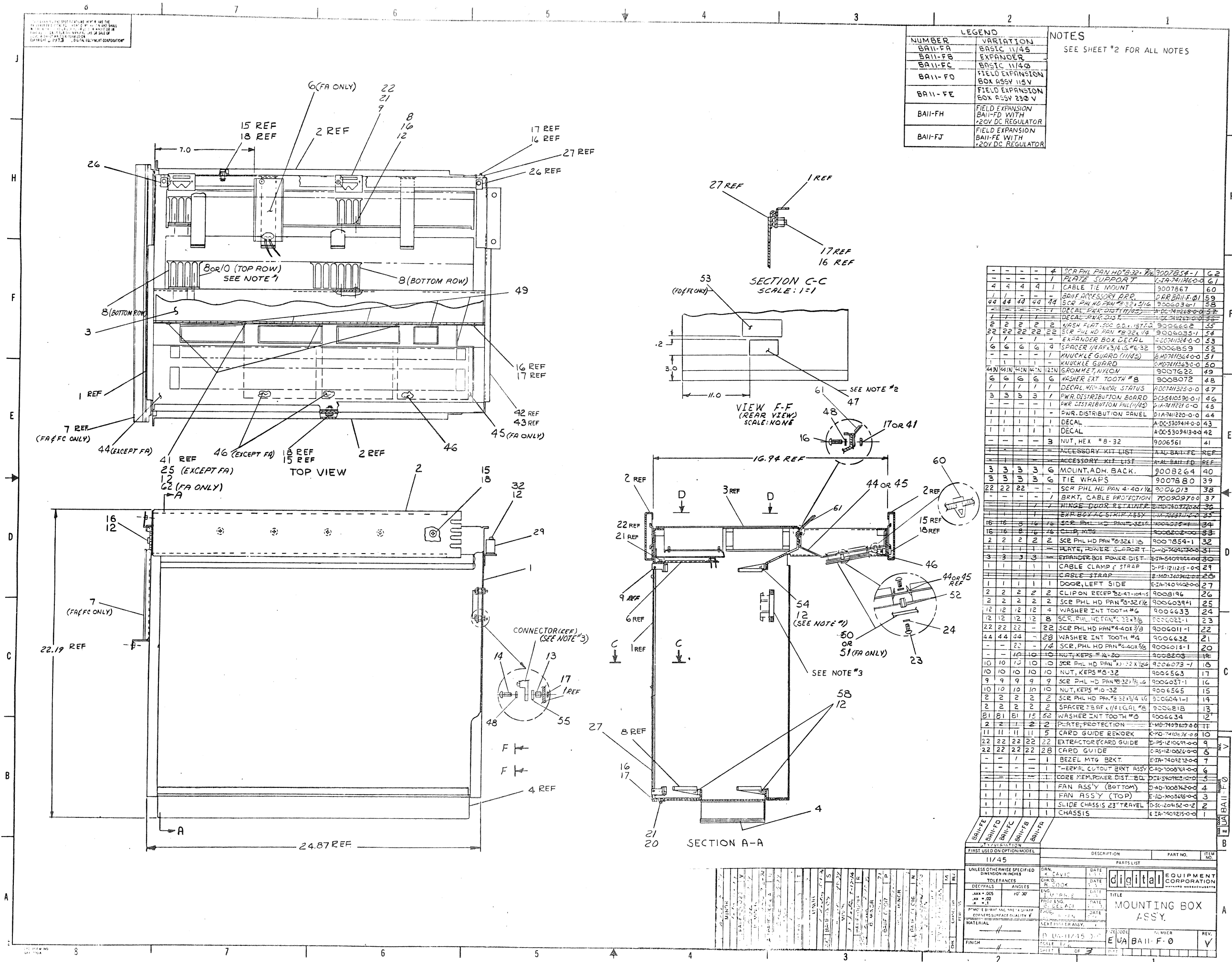
This drawing and specifications herein, are the property of Digital Equipment Corporation and shall not be reproduced or copied or used in whole or in part as the basis for the manufacture or sale of items without written permission.

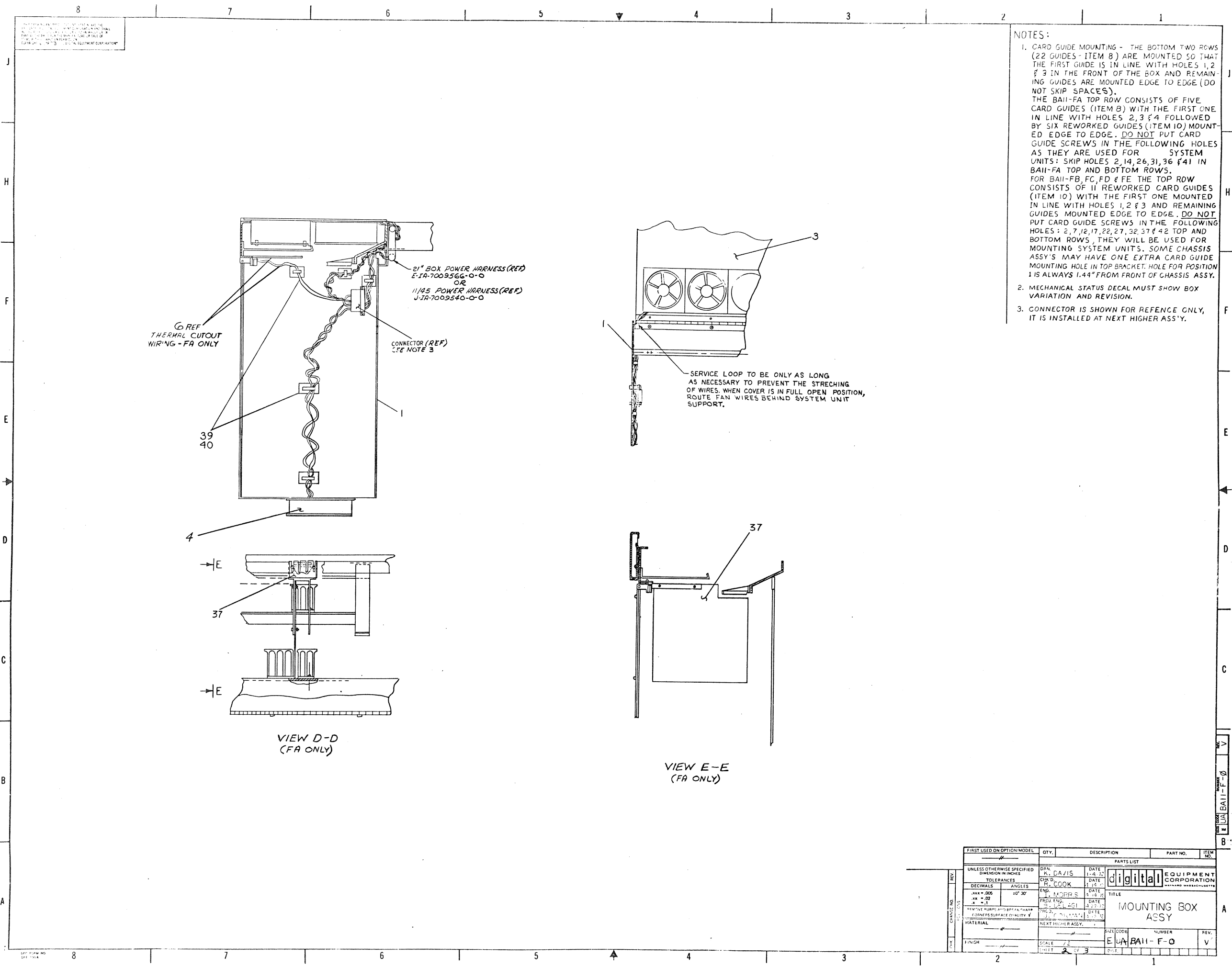
COPYRIGHT © 1973  
DIGITAL EQUIP CORP



VARIATION CS-CT (ONLY)

FIRST USED ON OPTION/MODEL		QTY.	DESCRIPTION	PART NO.	ITEM NO.
PDP 11/40					
PARTS LIST					
UNLESS OTHERWISE SPECIFIED DIMENSION IN INCHES. TOLERANCES		DRN. FLANDER	DATE 7-19-72	<b>digital</b> EQUIPMENT CORPORATION NATICK, MASSACHUSETTS	
		CHK'D C. TESCHNER	DATE 9-22-72		
		ENG. BLASI	DATE 9-22-72		
		PROJ. ENG. J.F. O'LOUGHLIN	DATE 9-22-72		
		PROD. STRINGER	DATE 9-26-72		
REMOVE BURRS AND BREAK SHARP CORNERS. SURFACE QUALITY ✓		NEXT HIGHER ASSY.			
MATERIAL 11		B-DD-11/40			
SCALE 1/4" = 1"		DUA 11/40-3-2			

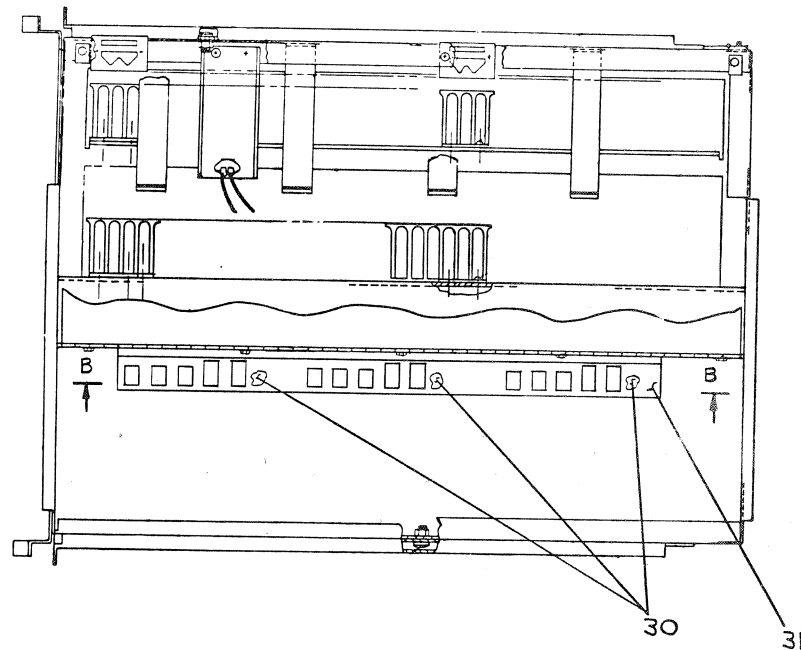




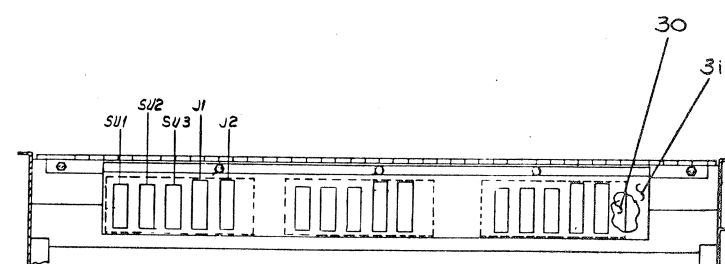
- NOTES:
1. CARD GUIDE MOUNTING - THE BOTTOM TWO ROWS (22 GUIDES - ITEM 8) ARE MOUNTED SO THAT THE FIRST GUIDE IS IN LINE WITH HOLES 1, 2 & 3 IN THE FRONT OF THE BOX AND REMAINING GUIDES ARE MOUNTED EDGE TO EDGE (DO NOT SKIP SPACES). THE BAIL-FA TOP ROW CONSISTS OF FIVE CARD GUIDES (ITEM 8) WITH THE FIRST ONE IN LINE WITH HOLES 2, 3 & 4 FOLLOWED BY SIX REWORKED GUIDES (ITEM 10) MOUNTED EDGE TO EDGE. DO NOT PUT CARD GUIDE SCREWS IN THE FOLLOWING HOLES AS THEY ARE USED FOR SYSTEM UNITS: SKIP HOLES 2, 14, 26, 31, 36 & 41 IN BAIL-FA TOP AND BOTTOM ROWS. FOR BAIL-FB, FC, FD & FE THE TOP ROW CONSISTS OF 11 REWORKED CARD GUIDES (ITEM 10) WITH THE FIRST ONE MOUNTED IN LINE WITH HOLES 1, 2 & 3 AND REMAINING GUIDES MOUNTED EDGE TO EDGE. DO NOT PUT CARD GUIDE SCREWS IN THE FOLLOWING HOLES: 2, 7, 12, 17, 22, 27, 32, 37 & 42 TOP AND BOTTOM ROWS. THEY WILL BE USED FOR MOUNTING SYSTEM UNITS. SOME CHASSIS ASSY'S MAY HAVE ONE EXTRA CARD GUIDE MOUNTING HOLE IN TOP BRACKET. HOLE FOR POSITION 1 IS ALWAYS 1.44" FROM FRONT OF CHASSIS ASSY.
  2. MECHANICAL STATUS DECAL MUST SHOW BOX VARIATION AND REVISION.
  3. CONNECTOR IS SHOWN FOR REFERENCE ONLY, IT IS INSTALLED AT NEXT HIGHER ASSY.

FIRST USED ON OPTION MODEL		QTY.	DESCRIPTION	PART NO.	ITEM NO.
PARTS LIST					
UNLESS OTHERWISE SPECIFIED DIMENSION IN INCHES		DRN R. DAVIS	DATE 11-10-70	digital EQUIPMENT CORPORATION	
TOLERANCES		CHK'D R. COOK	DATE 11-10-70		
DECIMALS	ANGLES	ENG. J. MORRIS	DATE 11-10-70	TITLE MOUNTING BOX ASSY	
.005	10' 30'	PRD. ENGR. J. MORRIS	DATE 11-10-70		
.01		CHK'D J. MORRIS	DATE 11-10-70	SIZE CODE EUA BAIL-F-0	
.1		DATE 11-10-70	DATE 11-10-70		
MATERIAL		NEXT HIGHER ASSY.		REV. V	
FINISH		SCALE 1/2"	DATE 11-10-70	2 OF 3	

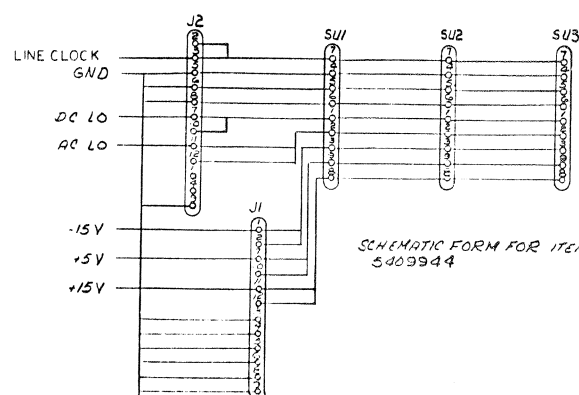
NOTE: THIS SHEET FOR REFERENCE ONLY.  
ALL ITEMS NUMBERED ARE NO  
LONGER USED IN PRESENT PROD.  
ITEMS 5,30,31,35 WERE DELETED BY  
NEW POWER DISTRIBUTION ECO.



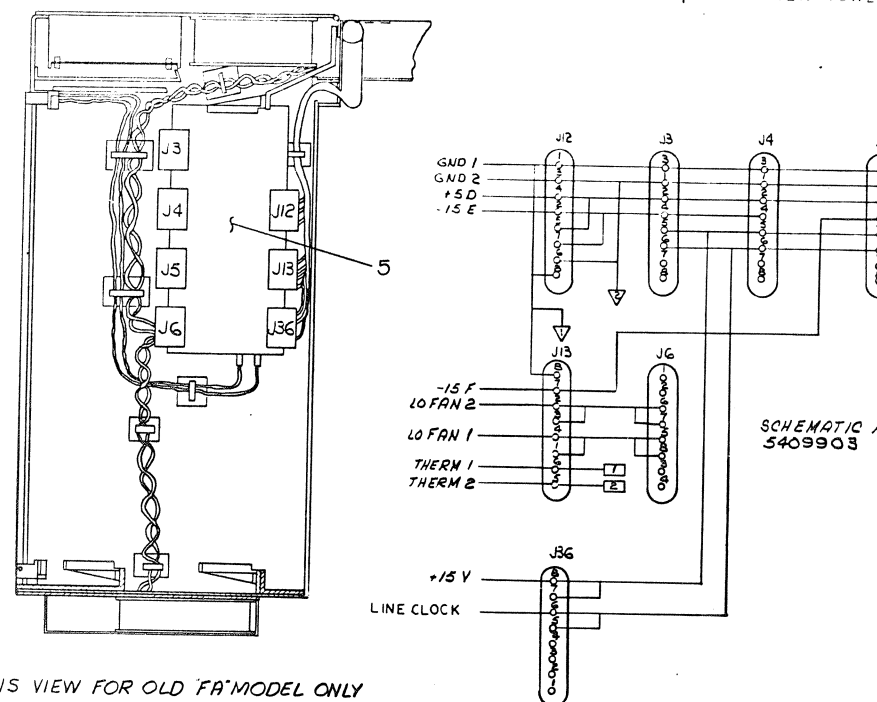
OLD TOP VIEW



OLD VIEW B-B  
EXCEPT FA

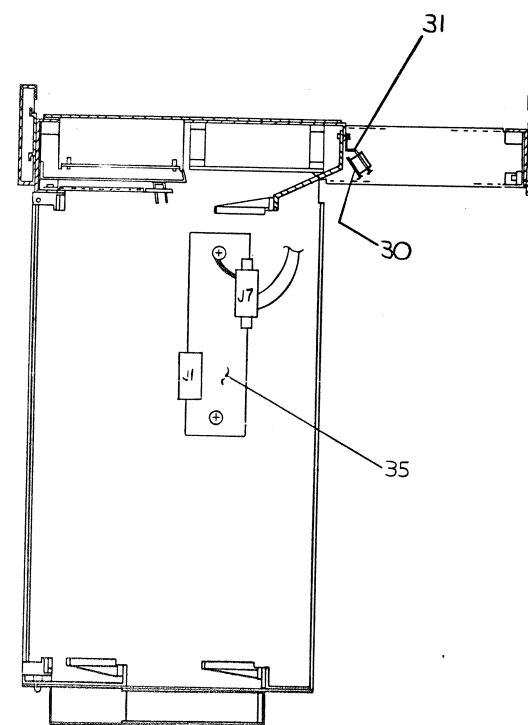


SCHEMATIC FORM FOR ITEM #30  
5409944

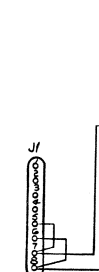


SCHEMATIC FORM OF ITEM #5  
5409903

THIS VIEW FOR OLD "FA" MODEL ONLY



OLD SECTION A-A  
EXCEPT FA



SCHEMATIC FORM OF ITEM #35  
7008911

SEE NOTE THIS PAG

PAGE {

1	1	1	1	---	EXP BOX AC STRIP ASSY	C-1A-70CB911-0-0	3
1	1	1	1	---	PLATE POWER SUPPORT	DMD-74053672-0-0	3
3	3	3	3	---	EXPANDER BOX POWER DIST	E7A-5403934-0-0	3
---	---	---	---	1	CORE MEM POWER DIST BD	D7A-54C0923-0-0	3

BAIL-1E    BAIL-1C    BAIL-1B    BAIL-1A

QTY/VAR/ACN

# 1ST USED ON OPTION MODEL

DESCRIPTION

PART NO.

ITN

UNLESS OTHERWISE SPECIFIED

DIMENSIONS IN INCHES

TOLERANCES

DECIMALS    ANGLES

.XXX = .003    10° 30'

.XX = .02

.X = .01

REPLACE LINE AND BREAD SHARP

CRYSTAL UNIT QUALITY IF

MATERIAL

NEXT HIGHER ASSY.

OBSOLETE PARTS LIST

DRN. N. DAVIS

C/A D. J. ...

ENG. ...

PROJ. ENG. ...

FRINGE ...

DATE 4-15-72

DATE 4-15-72

DATE 4-15-72

DATE

DATE

DATE

DATE

DATE

DATE

DATE

DATE

DATE

DATE

DATE

DATE

DATE

DATE

DATE

DATE

DATE

DATE

DATE

DATE

DATE

DATE

DATE

DATE

DATE

DATE

DATE

DATE

DATE

DATE

DATE

DATE

DATE

DATE

DATE

DATE

DATE

DATE

DATE

DATE

DATE

DATE

DATE

DATE

DATE

DATE

DATE

DATE

DATE

DATE

DATE

DATE

DATE

DATE

DATE

DATE

DATE

DATE

DATE

DATE

DATE

DATE

DATE

DATE

DATE

DATE

DATE

DATE

DATE

DATE

DATE

DATE

DATE

DATE

DATE

DATE

DATE

DATE

DATE

DATE

DATE

DATE

DATE

DATE

DATE

DATE

DATE

DATE

DATE

DATE

DATE

DATE

DATE

DATE

DATE

DATE

DATE

DATE

DATE

DATE

DATE

DATE

DATE

DATE

DATE

DATE

DATE

DATE

DATE

DATE

DATE

DATE

DATE

DATE

DATE

DATE

DATE

DATE

DATE

DATE

DATE

DATE

DATE

DATE

DATE

DATE

DATE

DATE

DATE

DATE

DATE

DATE

DATE

DATE

DATE

DATE

DATE

DATE

DATE

DATE

DATE

DATE

DATE

DATE

DATE

DATE

DATE

DATE

DATE

DATE

DATE

DATE

DATE

DATE

DATE

DATE

DATE

DATE

DATE

DATE

DATE

DATE

DATE

DATE

DATE

DATE

DATE

DATE

DATE

DATE

DATE

DATE

DATE

DATE

DATE

DATE

DATE

DATE

DATE

DATE

DATE

DATE

DATE

DATE

DATE

DATE

DATE

DATE

DATE

DATE

DATE

DATE

DATE

DATE

DATE

DATE

DATE

DATE

DATE

DATE

DATE

DATE

DATE

DATE

DATE

DATE

DATE

DATE

DATE

DATE

DATE

DATE

DATE

DATE

DATE

DATE

DATE

DATE

DATE

DATE

DATE

DATE

DATE

DATE

DATE

DATE

DATE

DATE

DATE

DATE

DATE

DATE

DATE

DATE

DATE

DATE

DATE

DATE

DATE

DATE

DATE

DATE

DATE

DATE

DATE

DATE

DATE

DATE

DATE

DATE

DATE

DATE

DATE

DATE

DATE

DATE

DATE

DATE

DATE

DATE

DATE

DATE

DATE

DATE

DATE

DATE

DATE

DATE

DATE

DATE

DATE

DATE

DATE

DATE

DATE

DATE

DATE

DATE

DATE

DATE

DATE

DATE

DATE

DATE

DATE

DATE

DATE

DATE

DATE

DATE

DATE

DATE

DATE

DATE

DATE

DATE

DATE

DATE

DATE

DATE

DATE

DATE

DATE

DATE

DATE

DATE

DATE

DATE

DATE

DATE

DATE

DATE

DATE

DATE

DATE

DATE

DATE

DATE

DATE

DATE

DATE

DATE

DATE

DATE

DATE

DATE

DATE

DATE

DATE

DATE

DATE

DATE

DATE

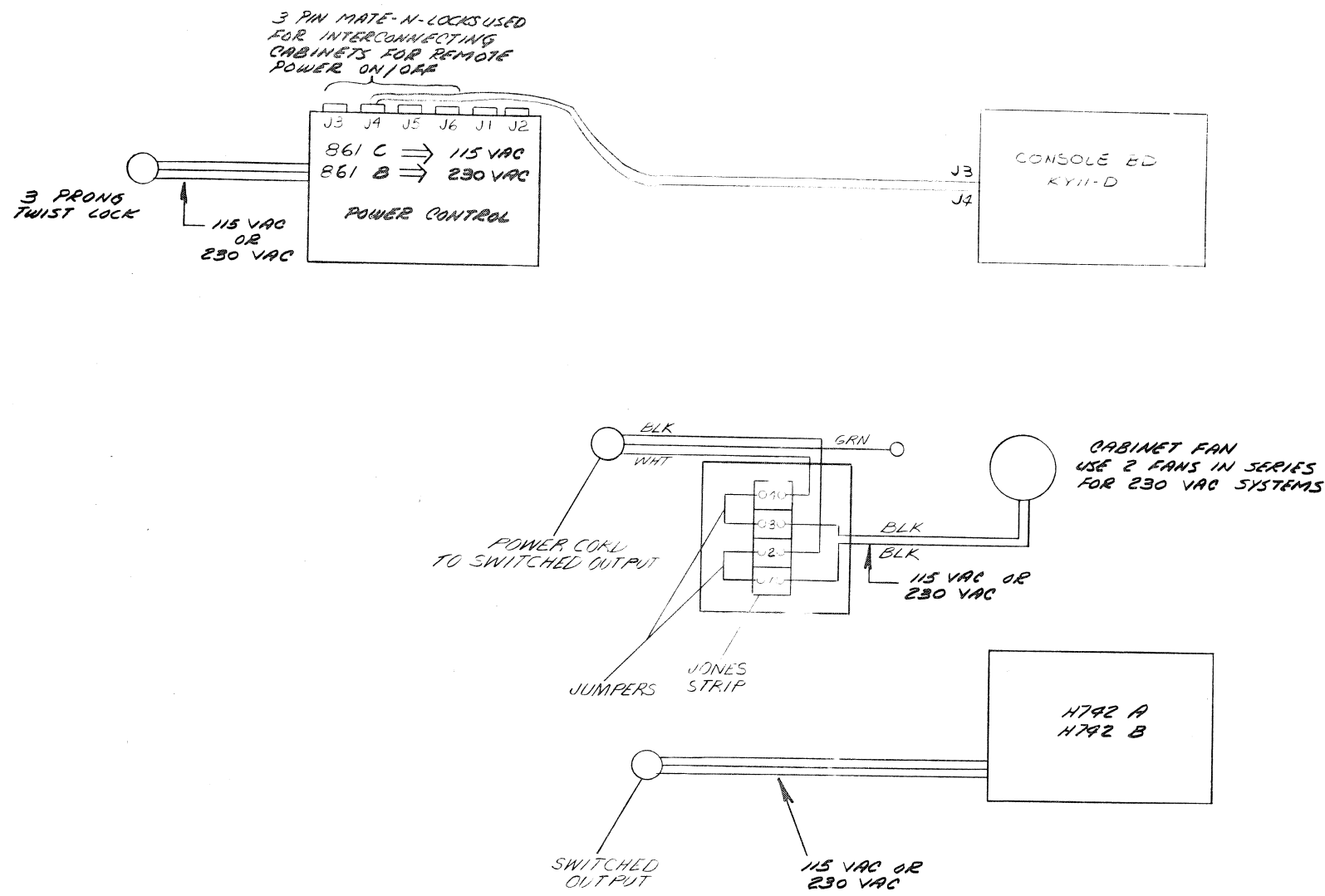
DATE

DATE

DATE

DATE

1. This document is the property of Digital Equipment Corporation and shall not be reproduced or copied or used in whole or in part as the basis for the manufacture or sale of items without the express written permission of Digital Equipment Corporation.



REVISIONS	
CHK	CHANGE NO.
1	11/40-00004
2	11/40-00004
3	11/40-00004
4	11/40-00004
5	11/40-00004
6	11/40-00004
7	11/40-00004
8	11/40-00004
9	11/40-00004
10	11/40-00004
11	11/40-00004
12	11/40-00004
13	11/40-00004
14	11/40-00004
15	11/40-00004
16	11/40-00004
17	11/40-00004
18	11/40-00004
19	11/40-00004
20	11/40-00004
21	11/40-00004
22	11/40-00004
23	11/40-00004
24	11/40-00004
25	11/40-00004
26	11/40-00004
27	11/40-00004
28	11/40-00004
29	11/40-00004
30	11/40-00004
31	11/40-00004
32	11/40-00004
33	11/40-00004
34	11/40-00004
35	11/40-00004
36	11/40-00004
37	11/40-00004
38	11/40-00004
39	11/40-00004
40	11/40-00004
41	11/40-00004
42	11/40-00004
43	11/40-00004
44	11/40-00004
45	11/40-00004
46	11/40-00004
47	11/40-00004
48	11/40-00004
49	11/40-00004
50	11/40-00004
51	11/40-00004
52	11/40-00004
53	11/40-00004
54	11/40-00004
55	11/40-00004
56	11/40-00004
57	11/40-00004
58	11/40-00004
59	11/40-00004
60	11/40-00004
61	11/40-00004
62	11/40-00004
63	11/40-00004
64	11/40-00004
65	11/40-00004
66	11/40-00004
67	11/40-00004
68	11/40-00004
69	11/40-00004
70	11/40-00004
71	11/40-00004
72	11/40-00004
73	11/40-00004
74	11/40-00004
75	11/40-00004
76	11/40-00004
77	11/40-00004
78	11/40-00004
79	11/40-00004
80	11/40-00004
81	11/40-00004
82	11/40-00004
83	11/40-00004
84	11/40-00004
85	11/40-00004
86	11/40-00004
87	11/40-00004
88	11/40-00004
89	11/40-00004
90	11/40-00004
91	11/40-00004
92	11/40-00004
93	11/40-00004
94	11/40-00004
95	11/40-00004
96	11/40-00004
97	11/40-00004
98	11/40-00004
99	11/40-00004
100	11/40-00004

DEC FORM NO. DRD 100-A

FIRST USED ON OPTION/MODEL	QTY.	DESCRIPTION	PART NO.
11/40			
PARTS LIST			
UNLESS OTHERWISE SPECIFIED: DIMENSION IN INCHES TOLERANCES	DRN CHK'D ENG PROL ENG PROD	DATE DATE DATE DATE DATE	DATE
DECIMALS	ANGLES		
XXX - .005 XX - .02 X - .1	$\pm 0^\circ 30'$		
REMOVE BURRS AND BREAK SHARP CORNERS SURFACE QUALITY			
MATERIAL	NEXT HIGHER ASSY.		
FINISH	SCALE		
	SHEET 1 OF 1		

digital EQUIPMENT CORPORATION  
MAYNARD, MASSACHUSETTS

40 DISTRIBUTION  
(11/40)

SIZE CODE  
D10110-C-1

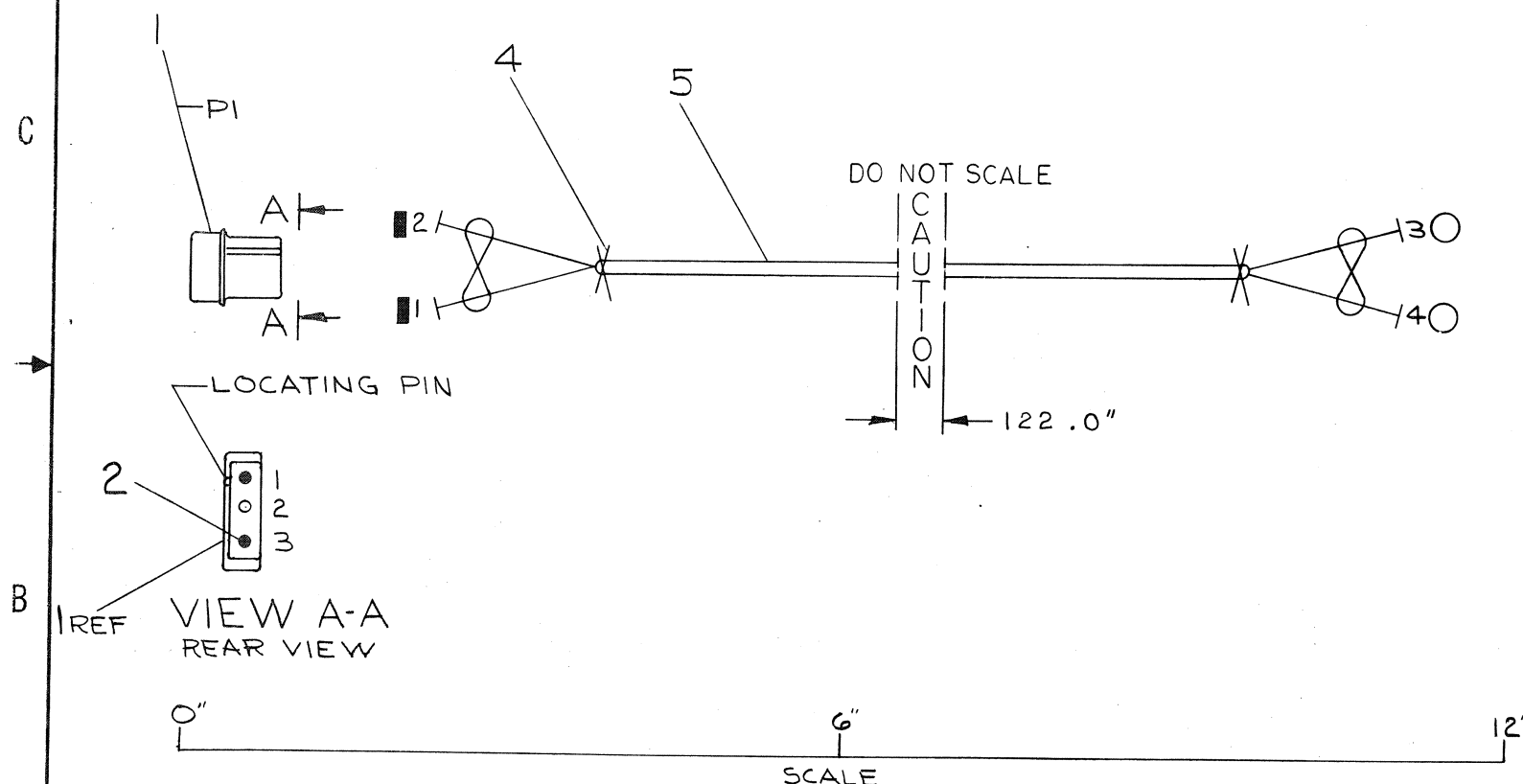
NUMBER  
1

This drawing and specifications, herein, are the property of Digital Equipment Corporation and shall not be reproduced or copied or used in whole or in part as the basis for the manufacture or sale of items without written permission.  
1973

WIRE TABLE								
ITEM NO	DESCRIPTION	FROM				TO		
		AWG	COLOR	POINT	CONNECTION	TERM	POINT	CONNECTION
5	18	BLK	RED	1	PI-3	2	3	—
				2	PI-1	2	4	—

### NOTES:

- USE TIE WRAPS(X) ITEM #4 AT END BREAKOUT POINTS.



	A/R	WIRE #18 AWG TWP BLK/RED	9107430-02	5
X	A/R	TIE-WRAP SST 1.5M	9007880	4
O	2	CONN SOLDERLESS #50902	9007917	3
I	2	MATE-N-LOCK TERM (MALE)	1209378-01	2
SYM	1	CONN MATE-N-LOCK (3 PIN)	1209351-03	1

REV.		CHANGE NO.	
1	A	7009053-00001	A
2	B	7009053-00002	B
3	C	7009053-00003	C
4	D	7009053-00004	D
5	E	7009053-00005	E
6	F	7009053-00006	F
7	G	7009053-00007	G
8	H	7009053-00008	H
9	I	7009053-00009	I
10	J	7009053-00010	J
11	K	7009053-00011	K
12	L	7009053-00012	L
13	M	7009053-00013	M
14	N	7009053-00014	N
15	O	7009053-00015	O
16	P	7009053-00016	P
17	Q	7009053-00017	Q
18	R	7009053-00018	R
19	S	7009053-00019	S
20	T	7009053-00020	T
21	U	7009053-00021	U
22	V	7009053-00022	V
23	W	7009053-00023	W
24	X	7009053-00024	X
25	Y	7009053-00025	Y
26	Z	7009053-00026	Z
27	AA	7009053-00027	AA
28	AB	7009053-00028	AB
29	AC	7009053-00029	AC
30	AD	7009053-00030	AD
31	AE	7009053-00031	AE
32	AF	7009053-00032	AF
33	AG	7009053-00033	AG
34	AH	7009053-00034	AH
35	AI	7009053-00035	AI
36	AJ	7009053-00036	AJ
37	AK	7009053-00037	AK
38	AL	7009053-00038	AL
39	AM	7009053-00039	AM
40	AN	7009053-00040	AN
41	AO	7009053-00041	AO
42	AP	7009053-00042	AP
43	AQ	7009053-00043	AQ
44	AR	7009053-00044	AR
45	AS	7009053-00045	AS
46	AT	7009053-00046	AT
47	AU	7009053-00047	AU
48	AV	7009053-00048	AV
49	AW	7009053-00049	AW
50	AX	7009053-00050	AX
51	AY	7009053-00051	AY
52	AZ	7009053-00052	AZ
53	BA	7009053-00053	BA
54	BB	7009053-00054	BB
55	BC	7009053-00055	BC
56	BD	7009053-00056	BD
57	BE	7009053-00057	BE
58	BF	7009053-00058	BF
59	BG	7009053-00059	BG
60	BH	7009053-00060	BH
61	BI	7009053-00061	BI
62	BJ	7009053-00062	BJ
63	BK	7009053-00063	BK
64	BL	7009053-00064	BL
65	BM	7009053-00065	BM
66	BN	7009053-00066	BN
67	BO	7009053-00067	BO
68	BP	7009053-00068	BP
69	BQ	7009053-00069	BQ
70	BR	7009053-00070	BR
71	BS	7009053-00071	BS
72	BT	7009053-00072	BT
73	BU	7009053-00073	BU
74	BV	7009053-00074	BV
75	BW	7009053-00075	BW
76	BX	7009053-00076	BX
77	BY	7009053-00077	BY
78	BZ	7009053-00078	BZ
79	CA	7009053-00079	CA
80	CB	7009053-00080	CB
81	CC	7009053-00081	CC
82	CD	7009053-00082	CD
83	CE	7009053-00083	CE
84	CF	7009053-00084	CF
85	CG	7009053-00085	CG
86	CH	7009053-00086	CH
87	CI	7009053-00087	CI
88	CJ	7009053-00088	CJ
89	CK	7009053-00089	CK
90	CL	7009053-00090	CL
91	CM	7009053-00091	CM
92	CN	7009053-00092	CN
93	CO	7009053-00093	CO
94	CP	7009053-00094	CP
95	CQ	7009053-00095	CQ
96	CR	7009053-00096	CR
97	CS	7009053-00097	CS
98	CT	7009053-00098	CT
99	CU	7009053-00099	CU
100	CV	7009053-00100	CV

FIRST USED ON OPTION/MODEL	QTY.	DESCRIPTION	PART NO.	ITEM NO.
11/4φ				
UNLESS OTHERWISE SPECIFIED DIMENSION IN INCHES. TOLERANCES	DRN. CHK'D. ENG. PROD. ENG. PROD.	DATE 8/11/72 9/24/72 7/22/72 9/22/72 7-26-72	PARTS LIST	
DECIMALS	ANGLES			
.XXX = .005	±0° 30'			
.XX = .02				
.X = .1				
REMOVE BURRS AND BREAK SHARP CORNERS SURFACE QUALITY	✓			
MATERIAL	NEXT HIGHER ASSY.			
SEE PARTS LIST	D-UA-11/4φ-φ-φ			
FINISH	SCALE 1/1			
	SHEET 1 OF 1			
	DIST. 1			
	1			
	2			
	3			
	4			
	5			
	6			
	7			
	8			
	9			
	10			
	11			
	12			
	13			
	14			
	15			
	16			
	17			
	18			
	19			
	20			
	21			
	22			
	23			
	24			
	25			
	26			
	27			
	28			
	29			
	30			
	31			
	32			
	33			
	34			
	35			
	36			
	37			
	38			
	39			
	40			
	41			
	42			
	43			
	44			
	45			
	46			
	47			
	48			
	49			
	50			
	51			
	52			
	53			
	54			
	55			
	56			
	57			
	58			
	59			
	60			
	61			
	62			
	63			
	64			
	65			
	66			
	67			
	68			
	69			
	70			
	71			
	72			
	73			
	74			
	75			
	76			
	77			
	78			
	79			
	80			
	81			
	82			
	83			
	84			
	85			
	86			
	87			
	88			
	89			
	90			
	91			
	92			
	93			
	94			
	95			
	96			
	97			
	98			
	99			
	100			

**digital** EQUIPMENT CORPORATION  
MAYNARD, MASSACHUSETTS

TITLE  
CONSOLE TO  
POWER CONTROL  
HARNESS

SIZE CODE  
C IA 7009053-0-0

REV.  
B



This drawing and specifications, herein, are the property of Digital Equipment Corporation and shall not be reproduced or copied or used in whole or in part as the basis for the manufacture or sale of items without written permission.

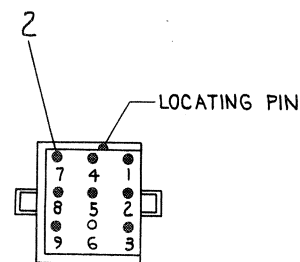
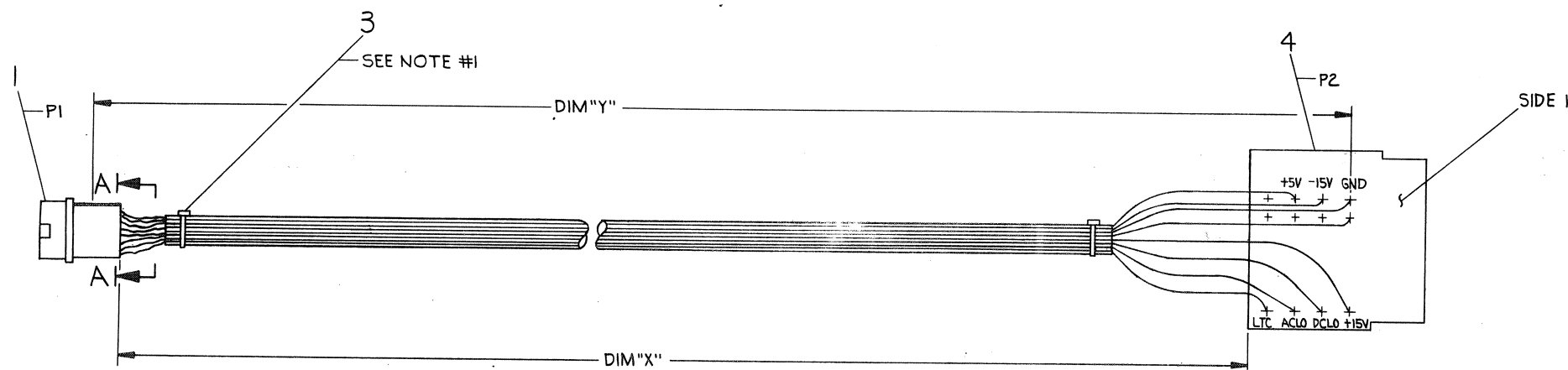
# WIRE TABLE

ITEM NO.	DESCRIPTION	FROM	TO	REMARKS
5	18 VIO	PI-1	P2-DCLO	
6	14 BLK	PI-4	P2-GND	
7	18 BRN	PI-7	P2-LTC	
8	18 YEL	PI-2	P2-ACLO	
6	14 BLK	PI-5	P2-GND	
9	14 GRY	PI-8	P2-+15V	
10	18 BLU	PI-3	P2--15V	
11	14 RED	PI-9	P2-+5V	

NUMBER	DIM "X" VARIATION	DIM "Y" (PRECUT) REF
1009177-02	2 FEET	2 FEET 2 INCHES

## NOTES:

- USE TIE WRAPS ITEM #3 APPROXIMATELY EVERY THREE (3) INCHES WHEN NECESSARY, AND AT EVERY BREAKOUT POINT



SECTION A-A  
RIGHT-HAND VIEW  
PI

A/R	WIRE, #14 AWG	RED	9107370-22	11
A/R	WIRE, #18 AWG	BLU	9107360-66	10
A/R	WIRE, #14 AWG	GRY	9107370-88	9
A/R	WIRE, #18 AWG	YEL	9107360-44	8
A/R	WIRE, #18 AWG	BRN	9107360-11	7
A/R	WIRE, #14 AWG	BLK	9107370-00	6
A/R	WIRE, #18 AWG	VIO	9107360-77	5
1	POWER CONN. G772		A-PL-G772-0-0	4
A/R	TIE WRAP SST1.5M		9007880	3
8	MATE-N-LOC TERM. (MALE)		1209378-01	2
1	CONN., MATE-N-LOC (9 PIN)		1209351-09	1

FIRST USED ON OPTION/MODEL	QTY.	DESCRIPTION	PART NO.	ITEM NO.
11/40				
UNLESS OTHERWISE SPECIFIED DIMENSION IN INCHES. TOLERANCES				
DECIMALS	ANGLES	TITLE		
.XXX = .005	± 0° 30'	POWER DISTRIBUTION CABLE		
.XX = .02		CABLE		
.X = .1		CABLE		
REMOVE BURRS AND BREAK SHARP CORNERS SURFACE QUALITY				
MATERIAL	SEE PARTS LIST	SCALE	11	
FINISH		SHEET	1	OF 1

DRN	DATE	10/16/72
CHK'D	DATE	10/23/72
ENG.	DATE	10/23/72
PROJ. ENG.	DATE	10/23/72
PROJ. MGR.	DATE	10/23/72

digital EQUIPMENT CORPORATION	MASSACHUSETTS
100 N. MAIN ST.	ROSLINDALE, MASS. 02131

SIZE CODE	NUMBER	REV
DIA	7009177-02	2

BRUNING 40-107 15868  
DEC FORM NO  
RD 100-A