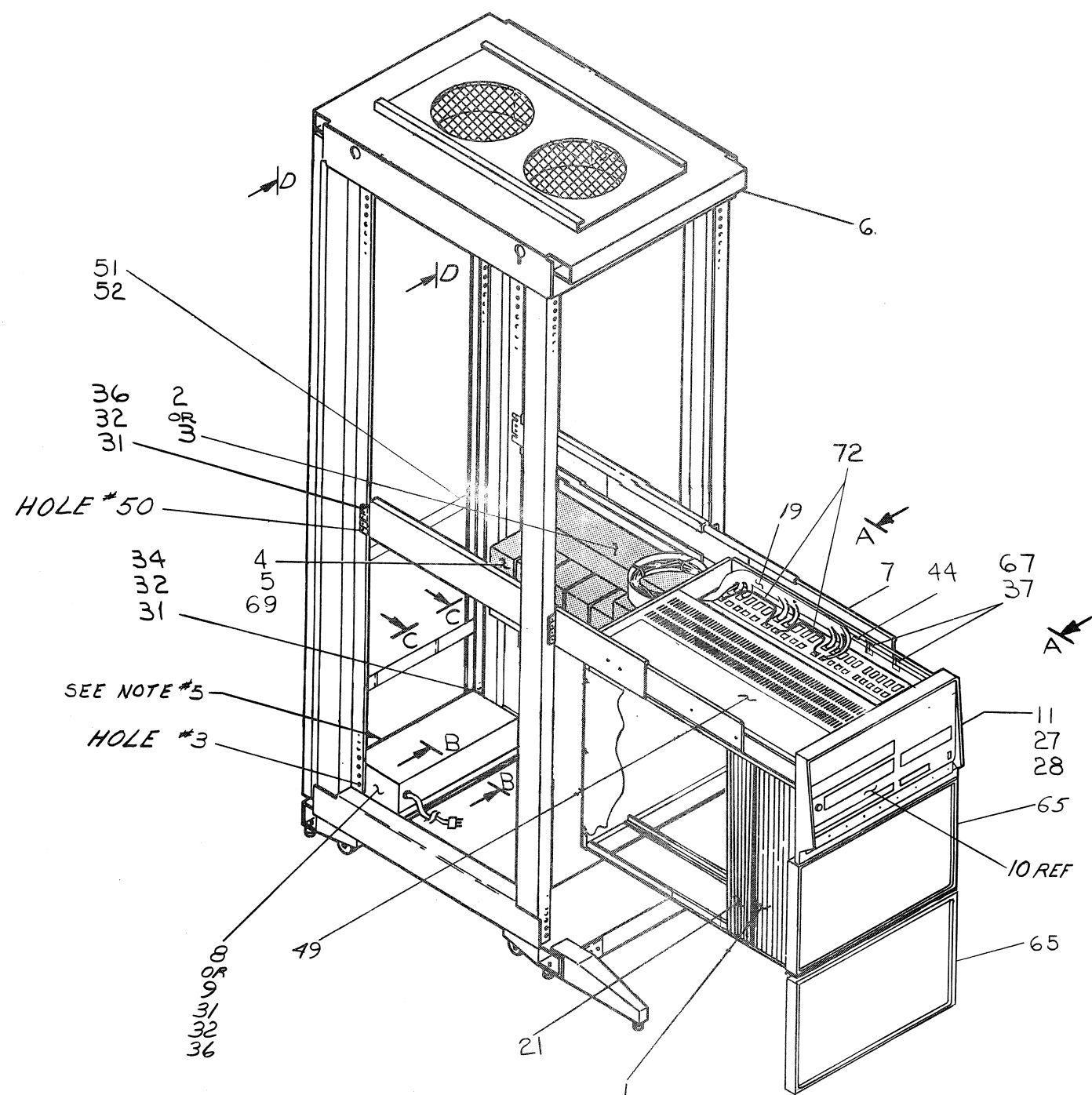


This drawing and specifications, herein, are the property of Digital Equipment Corporation and shall not be reproduced or copied or used in whole or in part as the basis for the manufacture or sale of items without written permission. **COPYRIGHT © 1972**
DIGITAL EQUIP. CORP




VARIATION CA & CB (ONLY)

LEGEND	
NUMBER	VARIATION
11/4 ϕ -CA	115 V, 60HZ
11/4 ϕ -CB	23 ϕ V, 50HZ
11/4 ϕ -CS	115V, 60HZ
11/4 ϕ -CT	23 ϕ V, 50HZ

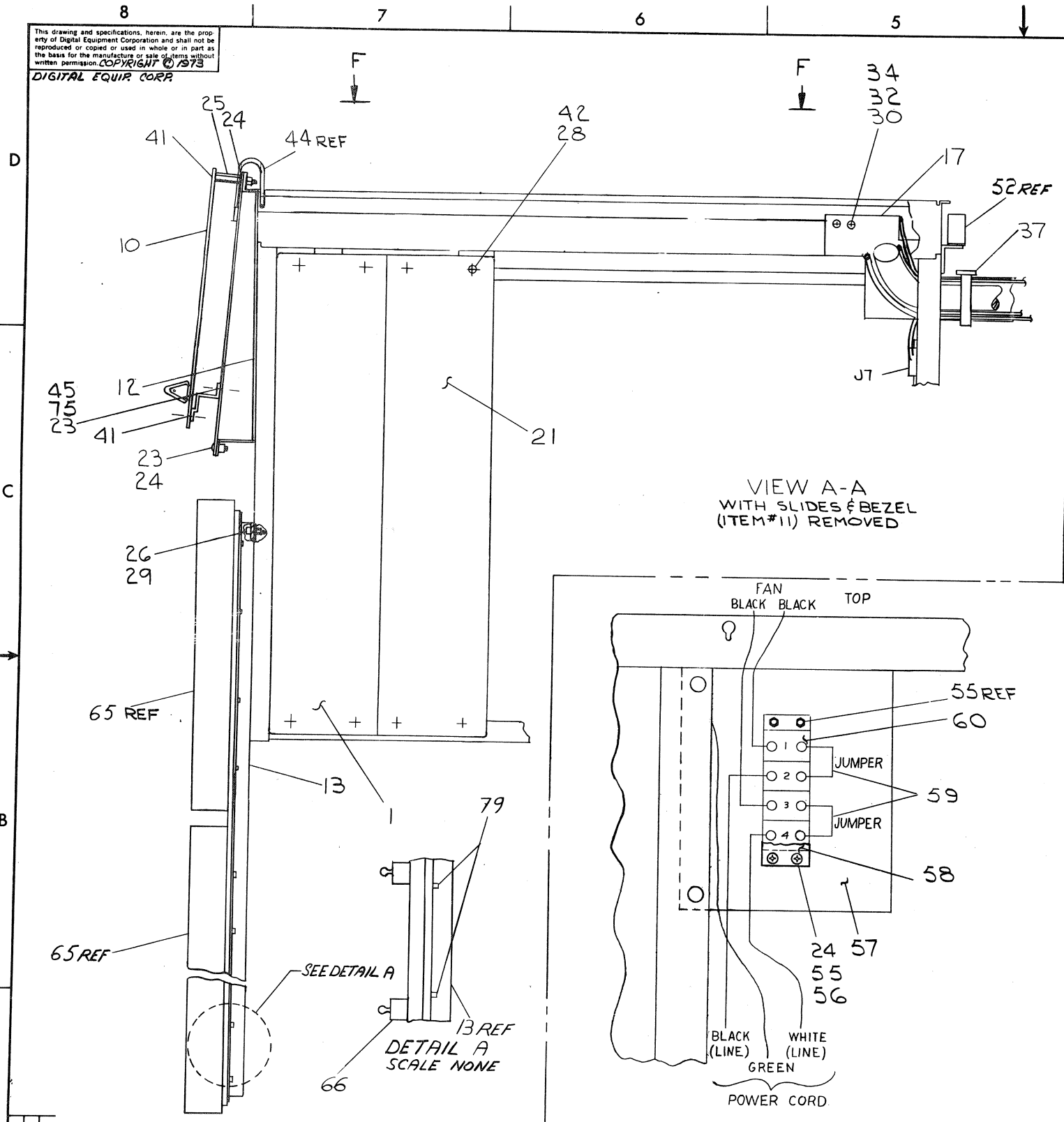
NOTES:

1. A.C. CONNECTION FOR CABINET FAN MAY BE ON BRACKET (VIEW D-D) OR ON JONES STRAP ON INTERIOR OF REAR SIDE OF CABINET MOUNTING CHANNEL.
2. FOR SYSTEMS CONFIGURATIONS NOT LISTED REFER TO C-PL-11/40-0-3.
3. BEHIND EACH 10 1/2" PANEL INSTALL (4) 3/8" SPACERS.
4. FOR VARIATIONS CSECT SEE SHT. #5 VARIATIONS CA# CB ON SHT. #1 ONLY.
5. TOP OF CABINET FAN AND H742 POWER SUPPLY MUST BE PLUGGED INTO LINE 1 OUTLETS ON THE 861 POWER CONTROL
6. MAIN HARNESS (ITEM #19) HAS TWO (2) UNUSED 8-PIN PLUGS (PI6 AND EITHER PI5 OR PI7). TO PREVENT DAMAGE TO REGULATORS INSERT AN EMPTY MATING CONN. (ITEM #74) INTO THEM AND TIE THEM OUT OF THE WAY, ALSO ADD OR REMOVE JUMPERS PER DIG7009566-0-1

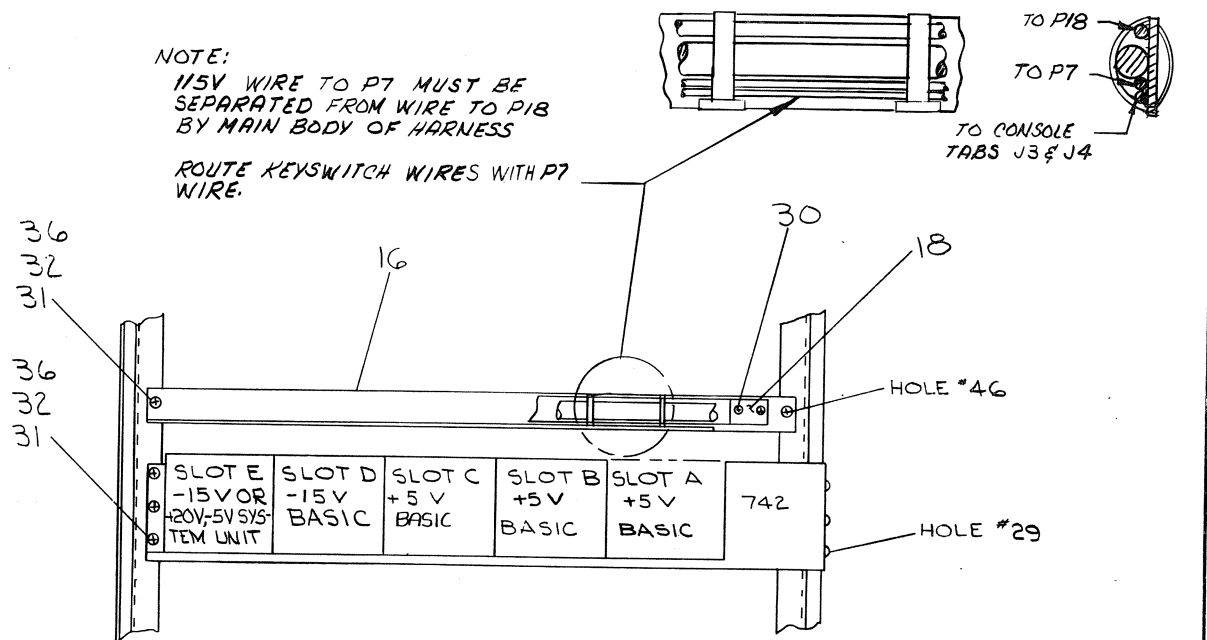
CHK	CHANGE NO.	REV.
822	11/40-00010A	F
	REVISED AND REDRAWN	
E. ALLISON 11-12-73		
B. ARMSTRONG		
J. B. BROWN 11-12-73		
88	11/40-00011	H
A. BARNES 3-1-74		
B. MINOR		
L. E. BROWN 2-15-74		
89	11/40-00012	J
B. CHARLES 3-5-74		
B. MINOR		
L. E. BROWN 2-12-74		
615	11/40-00014	K
88	A. BARNES 4-11-74	
B. MINOR		
L. E. BROWN 4-12-74		
88	11/40-00015	
A. BARNES 6-24-74		
SOFIO		
J. B. BROWN 7-31-74		

FIRST USED ON OPTION/MODEL		QTY.	DESCRIPTION	PART NO.	ITEM NO.
PDP11/40		PARTS LIST			
UNLESS OTHERWISE SPECIFIED DIMENSION IN INCHES. TOLERANCES		DRN. <i>E. Flanders</i>	DATE 7/19/72	 DIGITAL EQUIPMENT CORPORATION MAYNARD, MASSACHUSETTS	
DECIMALS ANGLES		CHK'D. <i>C. Teschner</i>	DATE 7/20/72		
XXX = .005	±0° 30'	ENG. <i>C.B. Blynn</i>	DATE 7/21/72		
.XX = .02		PROD. ENG. <i>John W. ...</i>	DATE 7/22/72		
.X = .01		PROD. MGR. <i>John W. ...</i>	DATE 9/26		
REMOVE BURRS AND BREAK SHARP CORNERS SURFACE QUALITY ✓		TITLE			BASIC ASSY (11/40)
MATERIAL		NEXT HIGHER ASSY.			
_____		B-DD-11/40			
FINISH _____		SIZE CODE		NUMBER	REV.
		DUA		11/40-0-0	L
		DIST.			

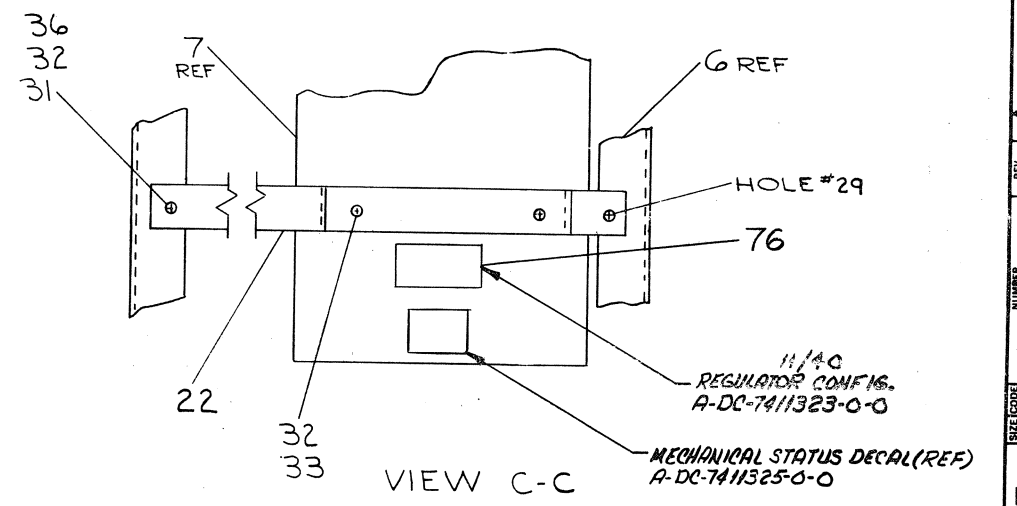
This drawing and specifications, herein, are the property of Digital Equipment Corporation and shall not be reproduced or copied or used in whole or in part as the basis for the manufacture or sale of items without written permission. COPYRIGHT © 1973 DIGITAL EQUIP CORP.



VIEW D-D
FAN WIRING
(TOP OF CABINET)



VIEW B-B

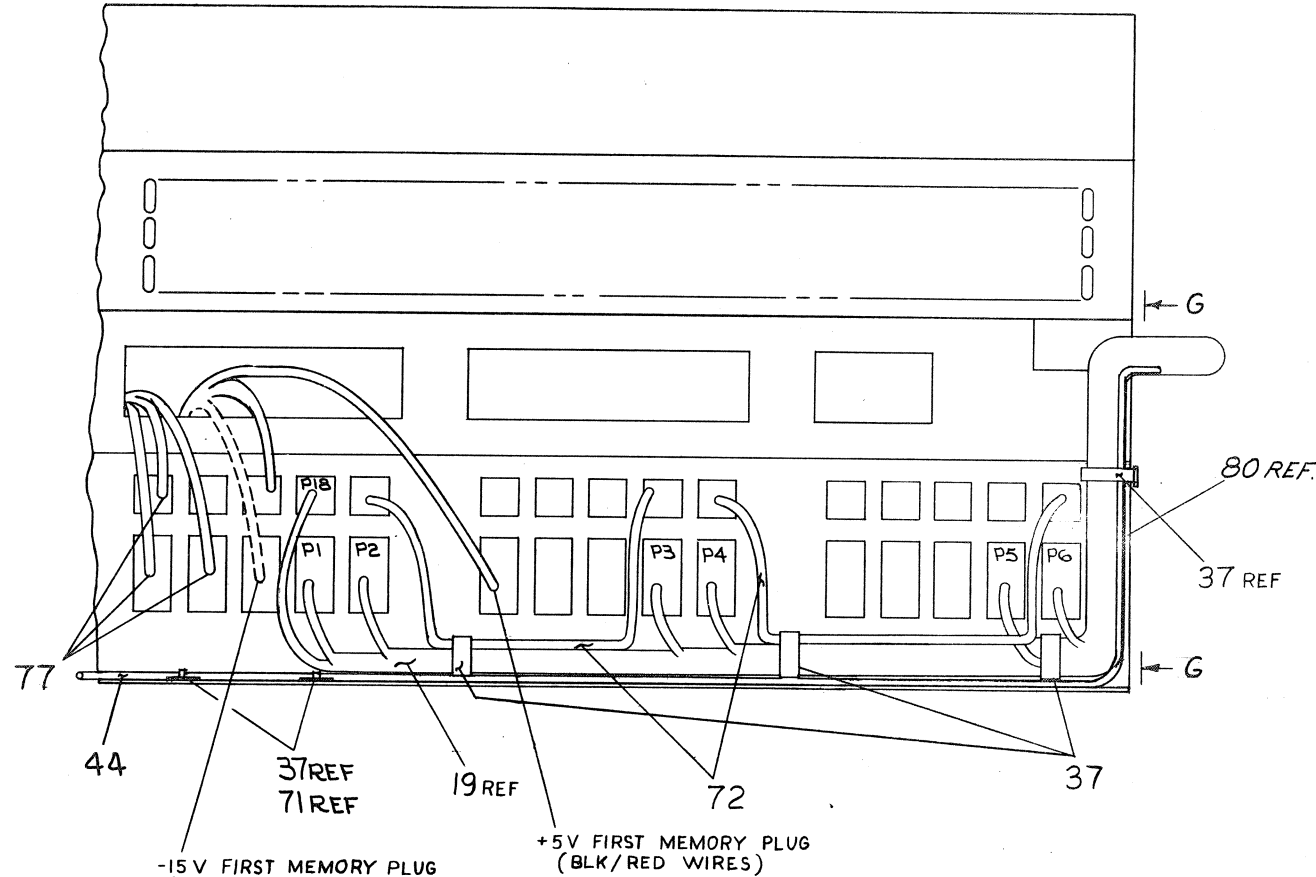
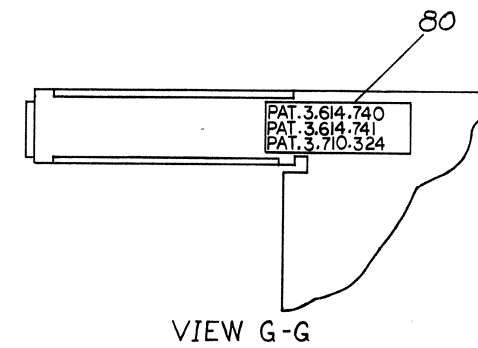


VIEW C-C

FIRST USED ON OPTION/MODEL	QTY.	DESCRIPTION	PART NO.	ITEM NO.
PARTS LIST				
UNLESS OTHERWISE SPECIFIED DIMENSION IN INCHES TOLERANCES	DRN G. FLANDER DATE 7-19-72	DATE 7-19-72	digital EQUIPMENT CORPORATION MAYNARD MASSACHUSETTS BASIC ASSY (11/40)	
DECIMALS	CHK'D C. TESCHNER DATE 9-22-72	DATE 9-22-72		
ANGLES	ENG C.K. BLASI DATE 9-22-72	DATE 9-22-72		
XXX ± .005 .XX ± .02 .X ± .1	PROJ. ENG. J.F. LOUGHLIN DATE 9-22-72	DATE 9-22-72		
REMOVE BURRS AND BREAK SHARP CORNERS SURFACE QUALITY	PROD G. STRINGER DATE 9-26-72	DATE 9-26-72		
MATERIAL	NEXT HIGHER ASSY.	SIZE CODE	NUMBER	REV.
FINISH	SCALE	D	UA 11/40-0-0	L
SHEET 2 OF 6		DIST. 11/40-0-0		

"THIS DRAWING AND SPECIFICATIONS, HEREIN, ARE THE PROPERTY OF DIGITAL EQUIPMENT CORPORATION AND SHALL NOT BE REPRODUCED OR COPIED OR USED IN WHOLE OR IN PART AS THE BASIS FOR THE MANUFACTURE OR SALE OF ITEMS WITHOUT WRITTEN PERMISSION.
COPYRIGHT © 1973, DIGITAL EQUIPMENT CORPORATION"

0-0-07/11/40 DUA 2



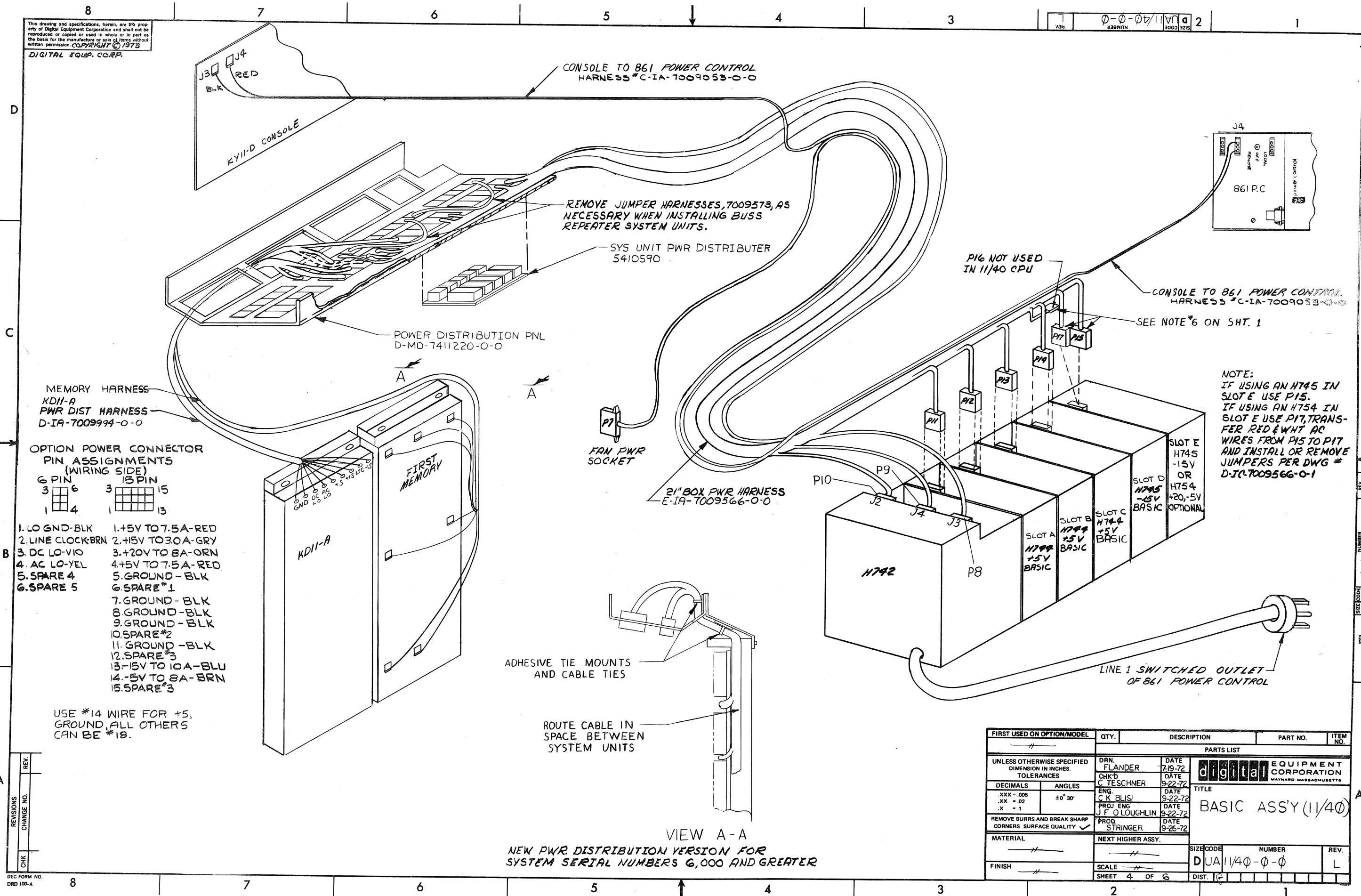
-15 V FIRST MEMORY PLUG
(BLK/BLU WIRES)
MFII-L ONLY

VIEW F-F
(ENLARGED VIEW)

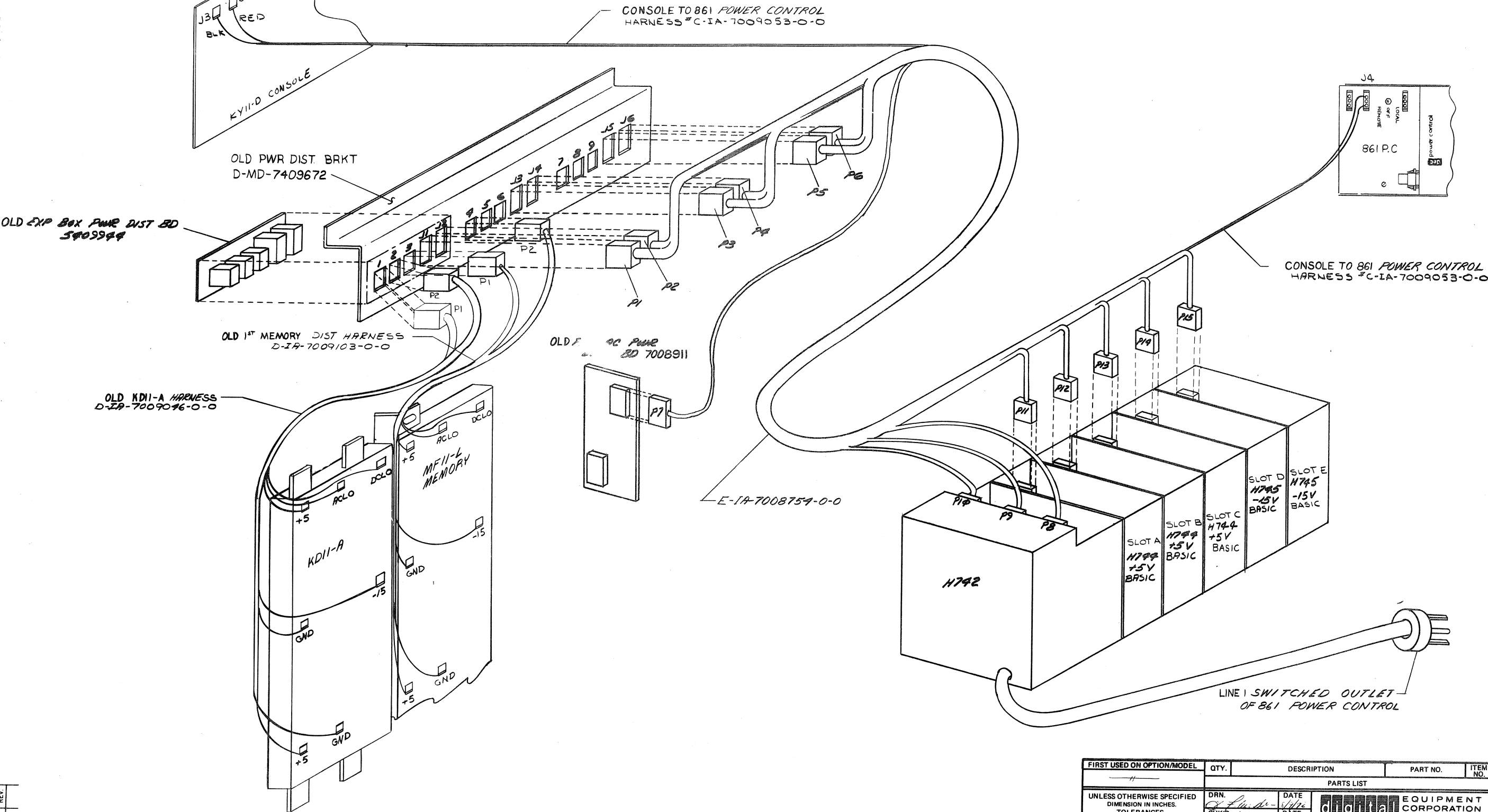
+5 V FIRST MEMORY PLUG
(BLK/RED WIRES)

FIRST USED ON OPTION/MODEL	QTY.	DESCRIPTION	PART NO.	ITEM NO.
UNLESS OTHERWISE SPECIFIED DIMENSION IN INCHES	DRN. G. FLANDER	DATE 7-19-72	<div>digital</div> <div>EQUIPMENT CORPORATION</div> <div>MAYNARD MASSACHUSETTS</div>	
TOLERANCES	CHK'D. C. TESCHNER	DATE 9-22-72		
DECIMALS	ENG. C. K. BLASI	DATE 9-22-72	TITLE BASIC ASSY (11/40)	
ANGLES	PROJ. ENG. J. F. LOUGHLIN	DATE 9-22-72		
REMOVE BURRS AND BREAK SHARP CORNERS SURFACE QUALITY V	PROD. G. STRINGER	DATE 9-26-72	SIZE CODE DUA 11/40-0-0	
MATERIAL	NEXT HIGHER ASSY.	SCALE	NUMBER	REV.
FINISH	SCALE	SHEET 3 OF 6	DIST.	L

This drawing and specifications, herein, are the property of Digital Equipment Corporation and shall not be reproduced or copied or used in whole or in part as the basis for the manufacture or sale of items without written permission. COPYRIGHT © 1973
DIGITAL EQUIP. CORP.



This drawing and specifications, herein, are the property of Digital Equipment Corporation and shall not be reproduced or copied or used in whole or in part as the basis for the manufacture or sale of items without written permission.



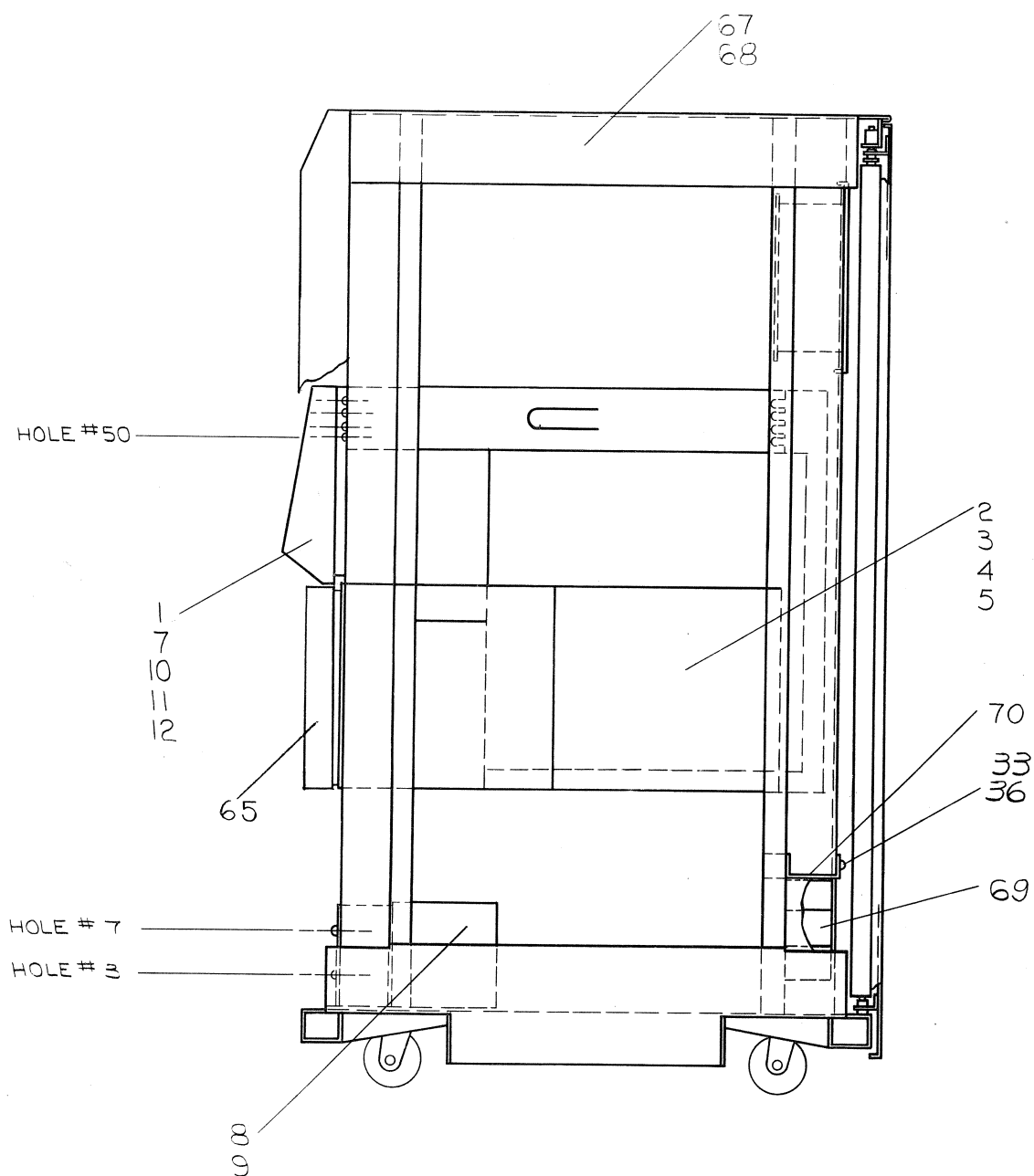
OLD PWR DISTRIBUTION VERSION FOR
SYSTEM SERIAL NUMBERS 5399 AND LOWER.

FIRST USED ON OPTION/MODEL	QTY.	DESCRIPTION	PART NO.	ITEM NO.
PARTS LIST				
UNLESS OTHERWISE SPECIFIED DIMENSION IN INCHES TOLERANCES	DRN. <i>Chandler</i> CHKD. <i>C. Schneider</i> ENG. <i>C. Schneider</i> PROJ/ENG. <i>Stoughton</i> PROD. <i>Stoughton</i>	DATE 5/1/72 9/22/72 9/22/72 9/22/72	digital EQUIPMENT CORPORATION MAYNARD, MASSACHUSETTS	
DECIMALS .005 XX .02 .X .1	ANGLES ±0° 30'	TITLE BASIC ASS'Y (11/40)		
REMOVE BURRS AND BREAK SHARP CORNERS SURFACE QUALITY	NEXT HIGHER ASSY.	SCALE SHEET 5 OF 6	SIZE CODE DUA11/40-0-0	REV. L
MATERIAL				
FINISH				

REVISIONS	CHANGE NO.	REV.
CHK		

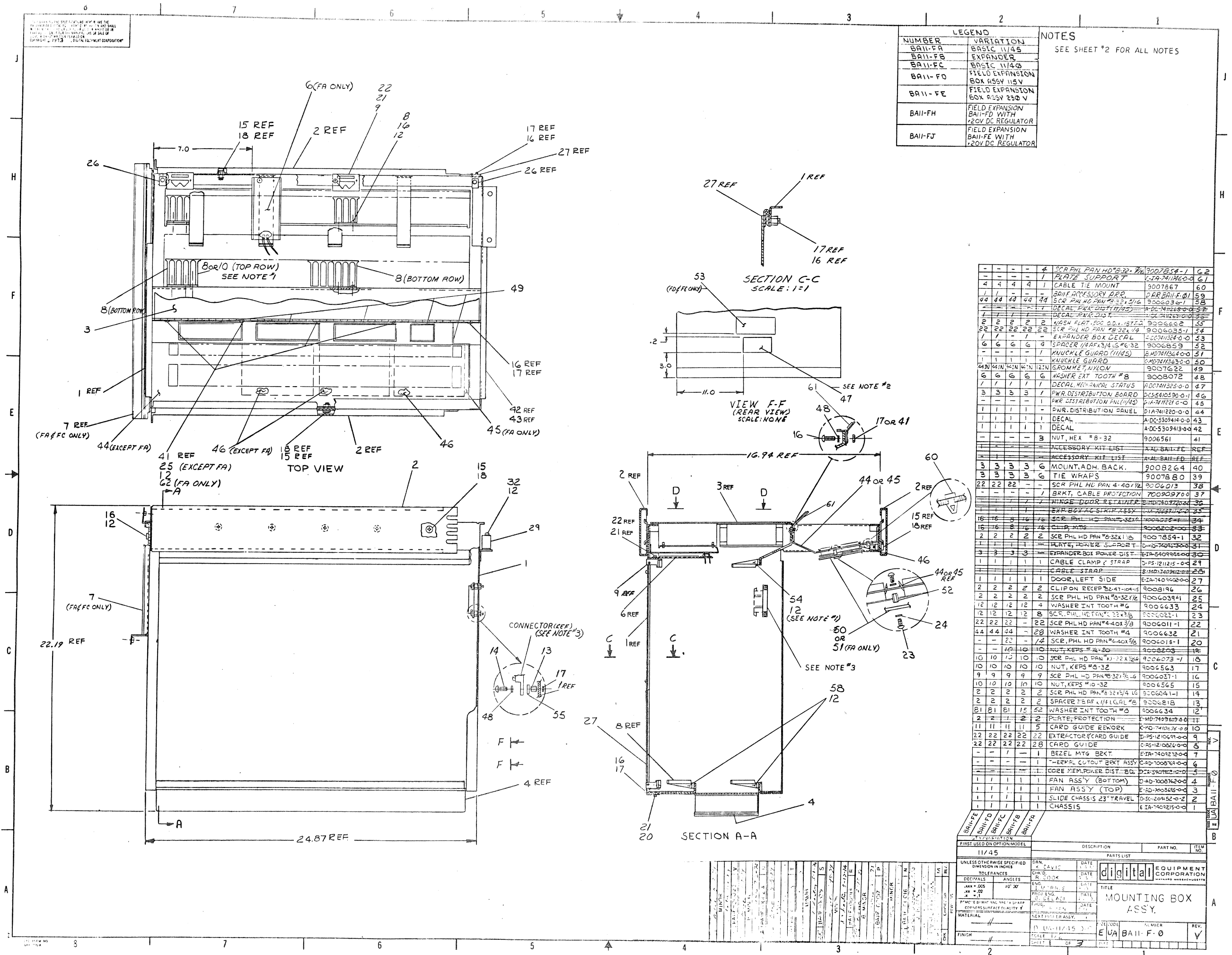
This drawing and specifications herein are the property of Digital Equipment Corporation and shall not be reproduced or copied or used in whole or in part as the basis for the manufacture or sale of items without written permission.

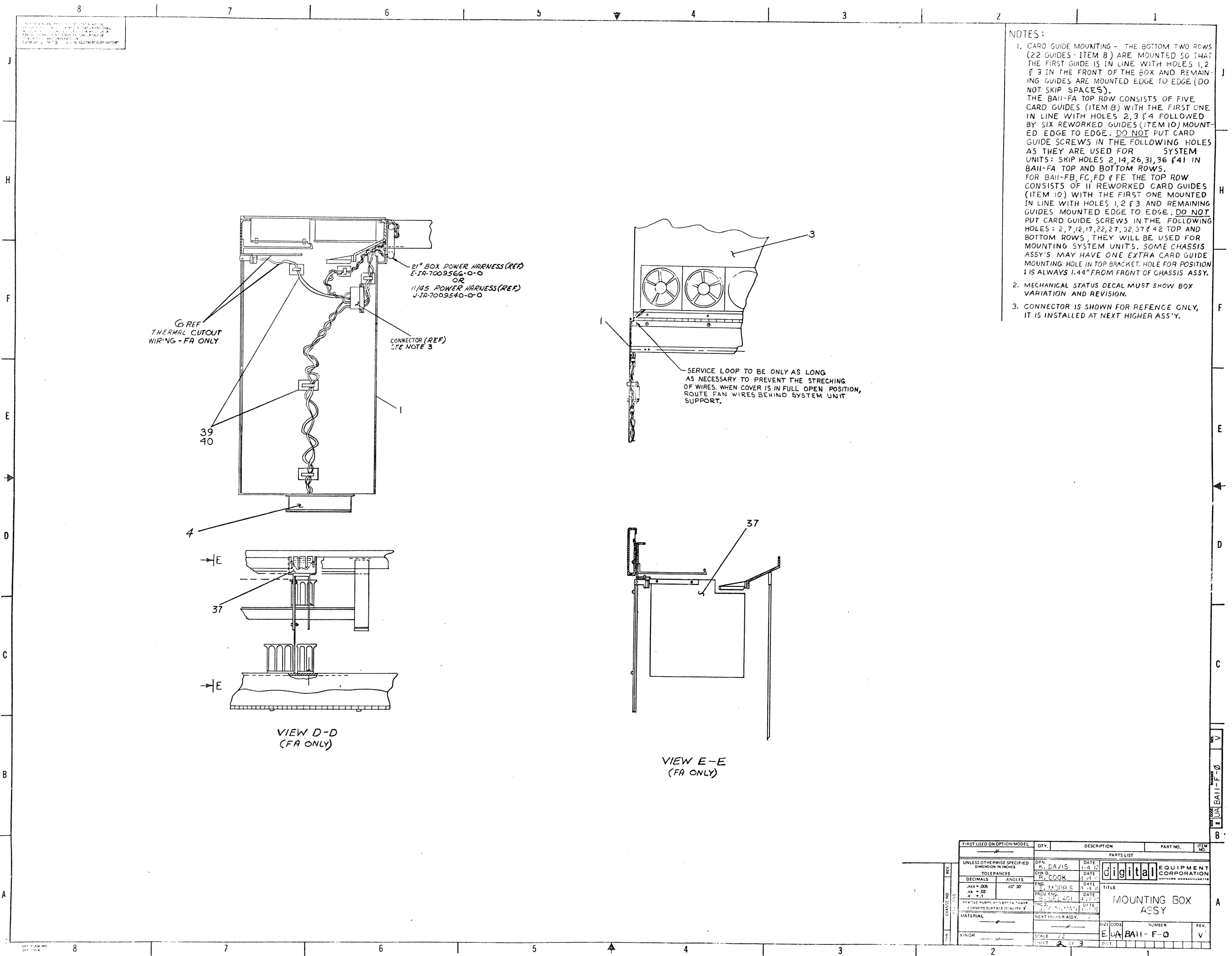
COPYRIGHT © 1973
DIGITAL EQUIP CORP



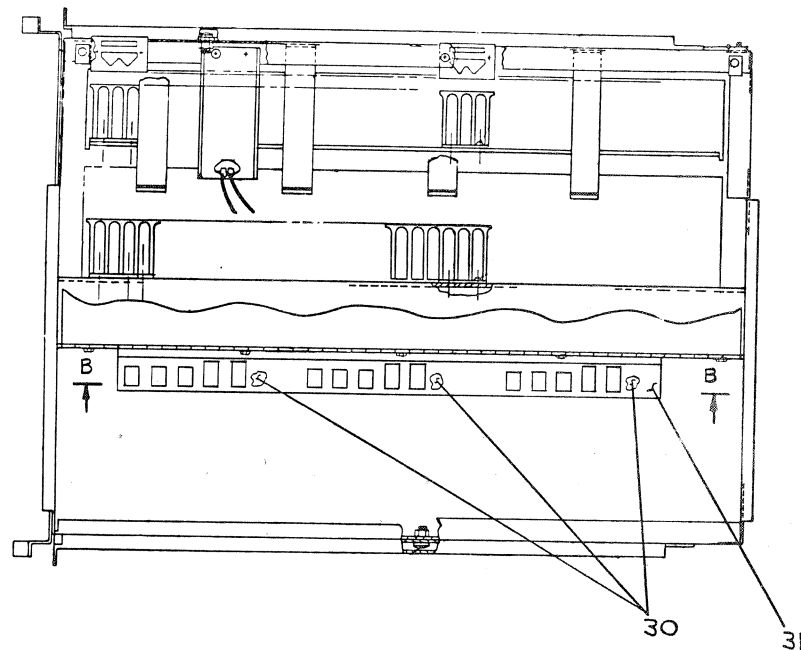
VARIATION CS-CT (ONLY)

FIRST USED ON OPTION/MODEL		QTY.	DESCRIPTION	PART NO.	ITEM NO.
PDP 11/40					
PARTS LIST					
UNLESS OTHERWISE SPECIFIED DIMENSION IN INCHES. TOLERANCES		DRN. FLANDER	DATE 7-19-72	digital EQUIPMENT CORPORATION NATICK, MASSACHUSETTS	
		CHK'D C. TESCHNER	DATE 9-22-72		
		ENG. BLASI	DATE 9-22-72		
		PROJ. ENG. J.F. O'LOUGHLIN	DATE 9-22-72		
		PROD. STRINGER	DATE 9-26-72		
REMOVE BURRS AND BREAK SHARP CORNERS. SURFACE QUALITY ✓		NEXT HIGHER ASSY.			
MATERIAL 11		B-DD-11/40		SIZE CODE DUA	NUMBER 11/40-3-0
FINISH		SCALE 6 6			

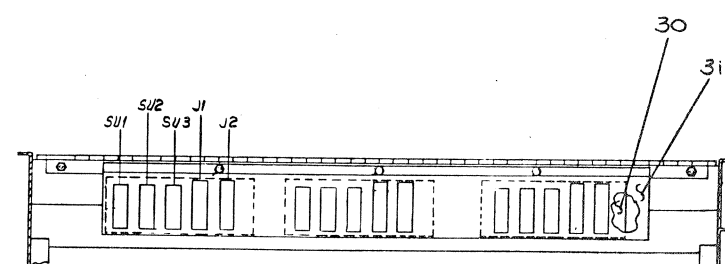




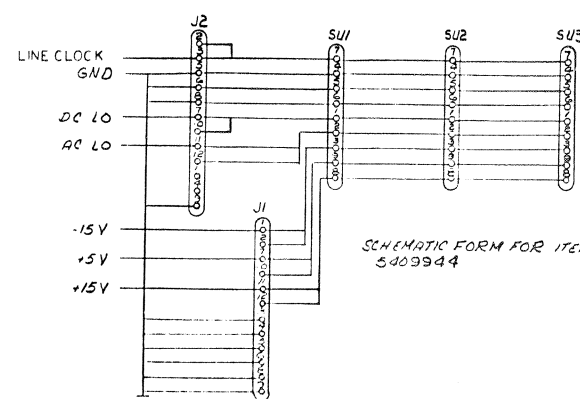
NOTE: THIS SHEET FOR REFERENCE ONLY.
ALL ITEMS NUMBERED ARE NO
LONGER USED IN PRESENT PROD.
ITEMS 5,30,31,35 WERE DELETED BY
NEW POWER DISTRIBUTION ECO.



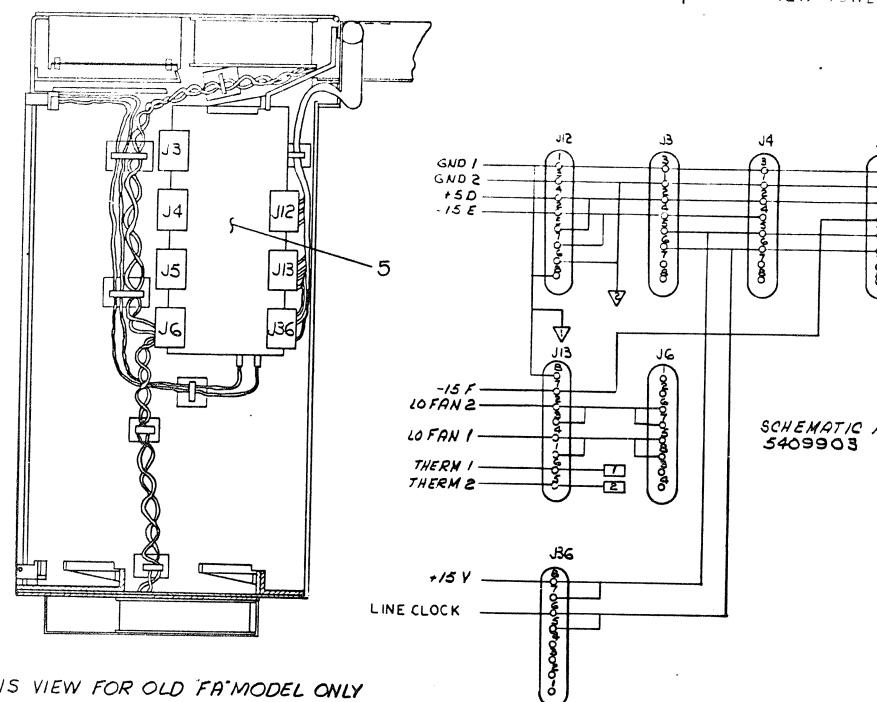
OLD TOP VIEW



OLD VIEW B-B
EXCEPT FA

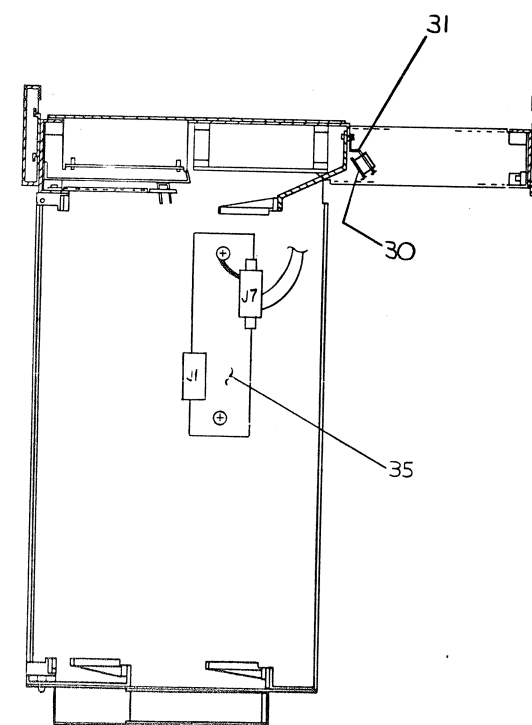


SCHEMATIC FORM FOR ITEM #30
5409944

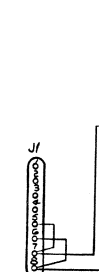


SCHEMATIC FORM OF ITEM #5
5409903

THIS VIEW FOR OLD "FA" MODEL ONLY



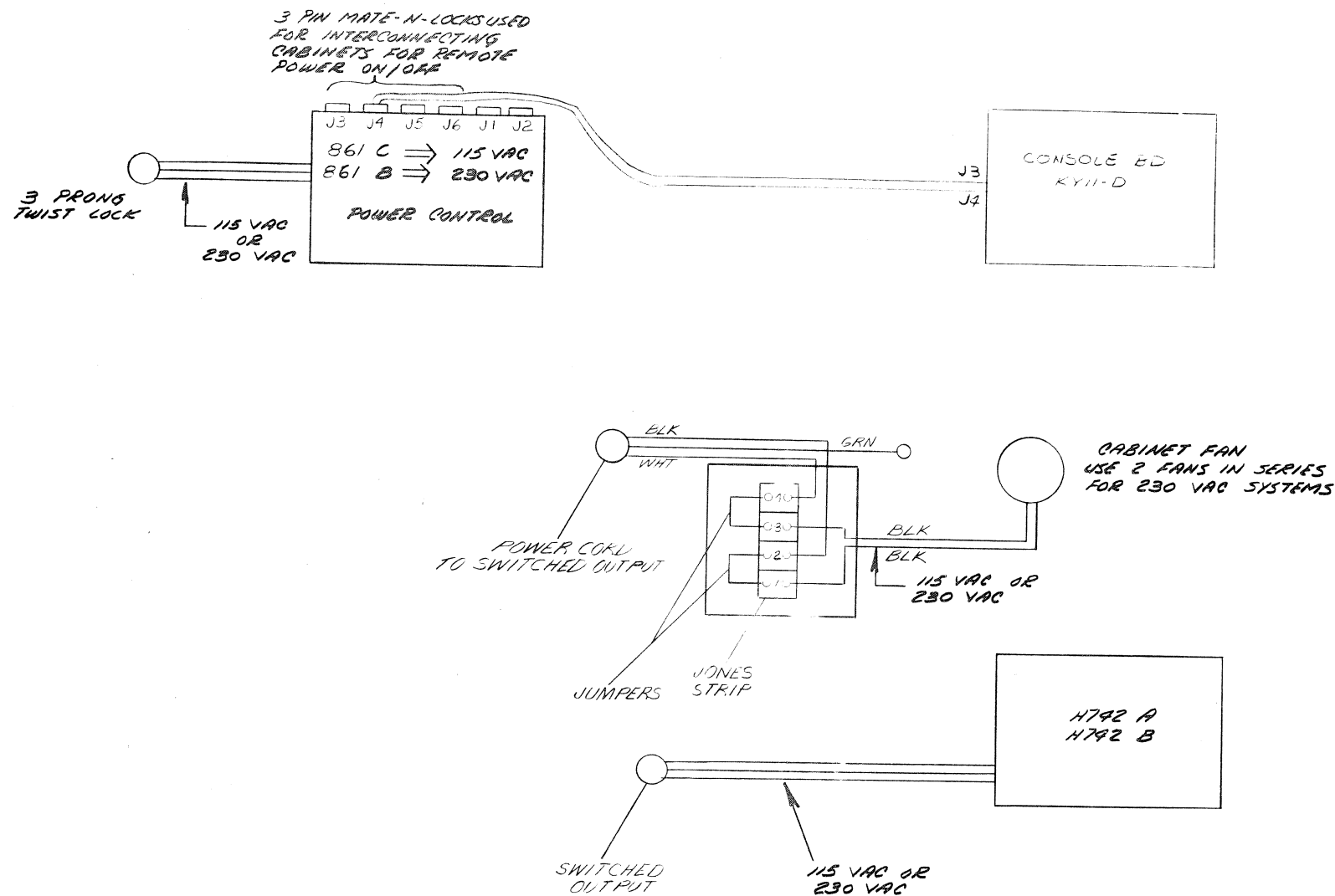
OLD SECTION A-A
EXCEPT FA



SCHEMATIC FORM OF ITEM #35
7008911

[illegible]

1. This equipment shall not be reproduced or copied or used in whole or in part as a basis for the manufacture or sale of items without the prior written consent of Digital Equipment Corporation.



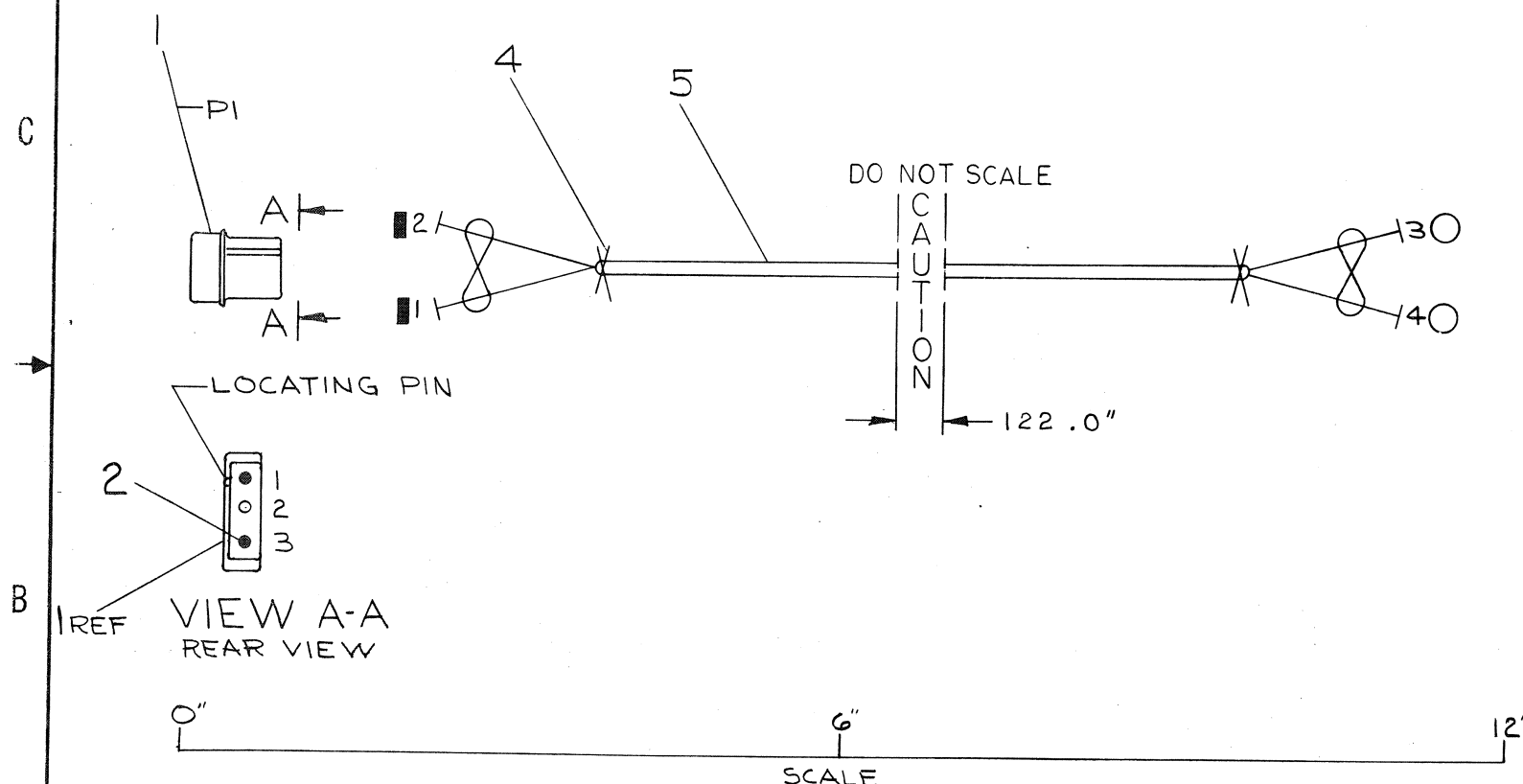
REVISIONS		REV.
CHK	CHANGE NO.	A
11/40-00004		
W. MINOR		
11-77		

DEC FORM NO. DRD 100-A

FIRST USED ON OPTION/MODEL	QTY.	DESCRIPTION	PART NO.
11-40			
PARTS LIST			
UNLESS OTHERWISE SPECIFIED: DIMENSION IN INCHES TOLERANCES	DRN CHK'D ENG PROL ENG PROD	DATE DATE DATE DATE DATE	11/72 7/22/72 9/21/72 11/22/72 7/26/72
DECIMALS	ANGLES	TITLE	
XXX - .005 XX - .02 X - .1	$\pm 0^\circ 30'$	40 DISTRIBUTION (H+O)	
REMOVE BURRS AND BREAK SHARP CORNERS SURFACE QUALITY		SIZE CODE	
MATERIAL	NEXT HIGHER ASSY.	NUMBER	
FINISH	SCALE	DIST	
SHEET 1 OF 1		1	

WIRE TABLE								
ITEM NO	DESCRIPTION	FROM				TO		
	AWG	COLOR	POINT	CONNECTION	TERM	POINT	CONNECTION	TERM
5	18	BLK	1	PI-3	2	3	—	3
		RED	2	PI-1	2	4	—	3

1. USE TIE WRAPS(X) ITEM #4 AT
END BREAKOUT POINTS.



DO NOT REDUCE

	A/R	WIRE #18 AWG TWP BLK/RED	9107430-02	5	CODE T V S I Z E	B
X	A/R	TIE-WRAP SST 1.5M	9007880	4		
○	2	CONN SOLDERLESS #50902	9007917	3		
■	2	MATE-N-LOCK TERM (MALE)	1209378-01	2		
SYM	1	CONN MATE-N-LOCK (3 PIN)	1209351-03	1		

FIRST USED ON OPTION/MODEL		QTY.	DESCRIPTION		PART NO.		REV. NO.	
11/4φ			PARTS LIST					
UNLESS OTHERWISE SPECIFIED DIMENSION IN INCHES. TOLERANCES		DRN. <i>[Signature]</i>	DATE 8/11/72		<div><div>digital</div><div>EQUIPMENT CORPORATION MAYNARD MASSACHUSETTS</div></div> <div>TITLE CONSOLE TO POWER CONTROL HARNESS</div>			
		CHK'D. <i>[Signature]</i>	DATE 9/22/72					
DECIMALS		ENG. <i>[Signature]</i>	DATE 9/22/72					
ANGLES		PROD. ENG. <i>[Signature]</i>	DATE 9/22/72					
.XXX = .005 .XX = .02 .X = .1		PROD. <i>[Signature]</i>	DATE 9-26-72					
REMOVE BURRS AND BREAK SHARP CORNERS SURFACE QUALITY ✓								
MATERIAL		NEXT HIGHER ASSY.						
SEE PARTS LIST		D-UA-11/4φ-φ-φ		SIZE CODE		NUMBER		REV.
FINISH		SCALE 1/1		C IA		7009053-0-0		B
		SHEET 1 OF 1		DIST. <i>[Signature]</i>				

REVIEWS	
CHK	CHANGE NO.
24	7009053-00001
C. F. Benson 4.3.73	
C.R. BLASI	
48	7009053-00002
B	
B. Minor	
B. Minor 7-3-74	

DEC FORM NO
1-67 (10) A

This drawing and specifications, herein, are the property of Digital Equipment Corporation and shall not be reproduced or copied or used in whole or in part as the basis for the manufacture or sale of items without written permission.

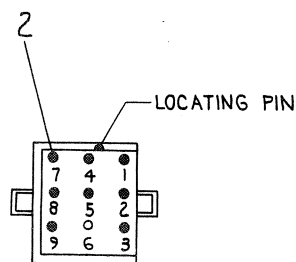
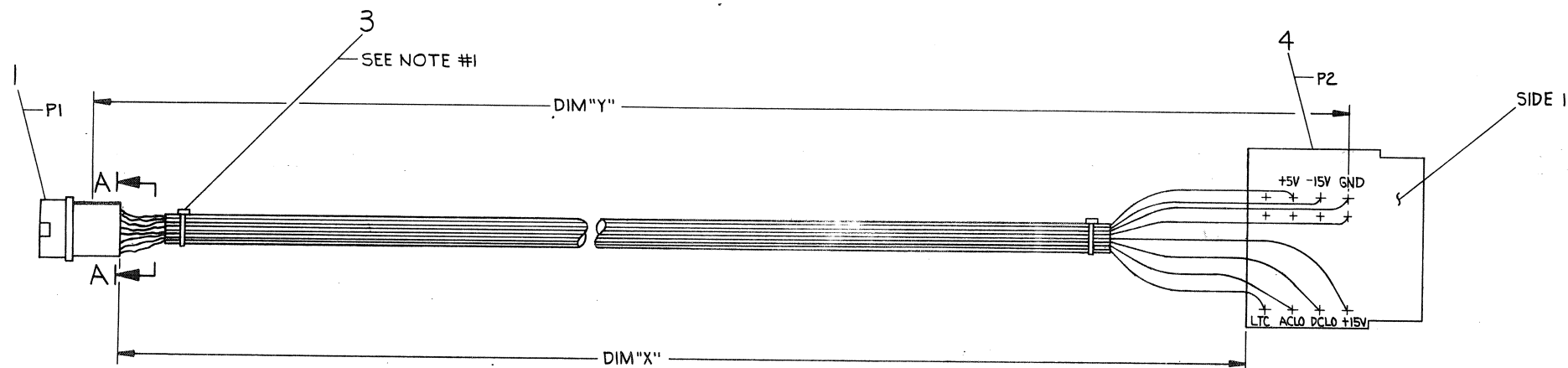
WIRE TABLE

ITEM NO.	DESCRIPTION	FROM	TO	REMARKS
5	18 VIO	PI-1	P2-DCLO	
6	14 BLK	PI-4	P2-GND	
7	18 BRN	PI-7	P2-LTC	
8	18 YEL	PI-2	P2-ACLO	
6	14 BLK	PI-5	P2-GND	
9	14 GRY	PI-8	P2-+15V	
10	18 BLU	PI-3	P2-+15V	
11	14 RED	PI-9	P2-+5V	

NUMBER	DIM "X" VARIATION	DIM "Y" (PRECUT) REF
1009177-02	2 FEET	2 FEET 2 INCHES

NOTES:

- USE TIE WRAPS ITEM #3 APPROXIMATELY EVERY THREE (3) INCHES WHEN NECESSARY, AND AT EVERY BREAKOUT POINT



SECTION A-A
RIGHT-HAND VIEW
PI

A/R	WIRE, #14 AWG	RED	9107370-22	11
A/R	WIRE, #18 AWG	BLU	9107360-66	10
A/R	WIRE, #14 AWG	GRY	9107370-88	9
A/R	WIRE, #18 AWG	YEL	9107360-44	8
A/R	WIRE, #18 AWG	BRN	9107360-11	7
A/R	WIRE, #14 AWG	BLK	9107370-00	6
A/R	WIRE, #18 AWG	VIO	9107360-77	5
I	POWER CONN. G772		A-PL-G772-0-0	4
A/R	TIE WRAP SST1.5M		9007880	3
B	MATE-N-LOC TERM. (MALE)		1209378-01	2
I	CONN., MATE-N-LOC (9 PIN)		1209351-09	1

FIRST USED ON OPTION/MODEL	QTY.	DESCRIPTION	PART NO.	ITEM NO.
11/40				
UNLESS OTHERWISE SPECIFIED DIMENSION IN INCHES. TOLERANCES				
DECIMALS	ANGLES	DATE		
.XXX = .005	±0° 30'	10/16/72		
.XX = .02		10/23/72		
.X = .1		10/23/72		
REMOVE BURRS AND BREAK SHARP CORNERS SURFACE QUALITY				
MATERIAL	SEE PARTS LIST	NEXT HIGHER ASSY.		
FINISH	11	D-UA-11/40-0-0		
SCALE		SHEET 1 OF 1		DIST.
TITLE		POWER DISTRIBUTION CABLE		
SIZE CODE		NUMBER		
DIA		7009177-02		