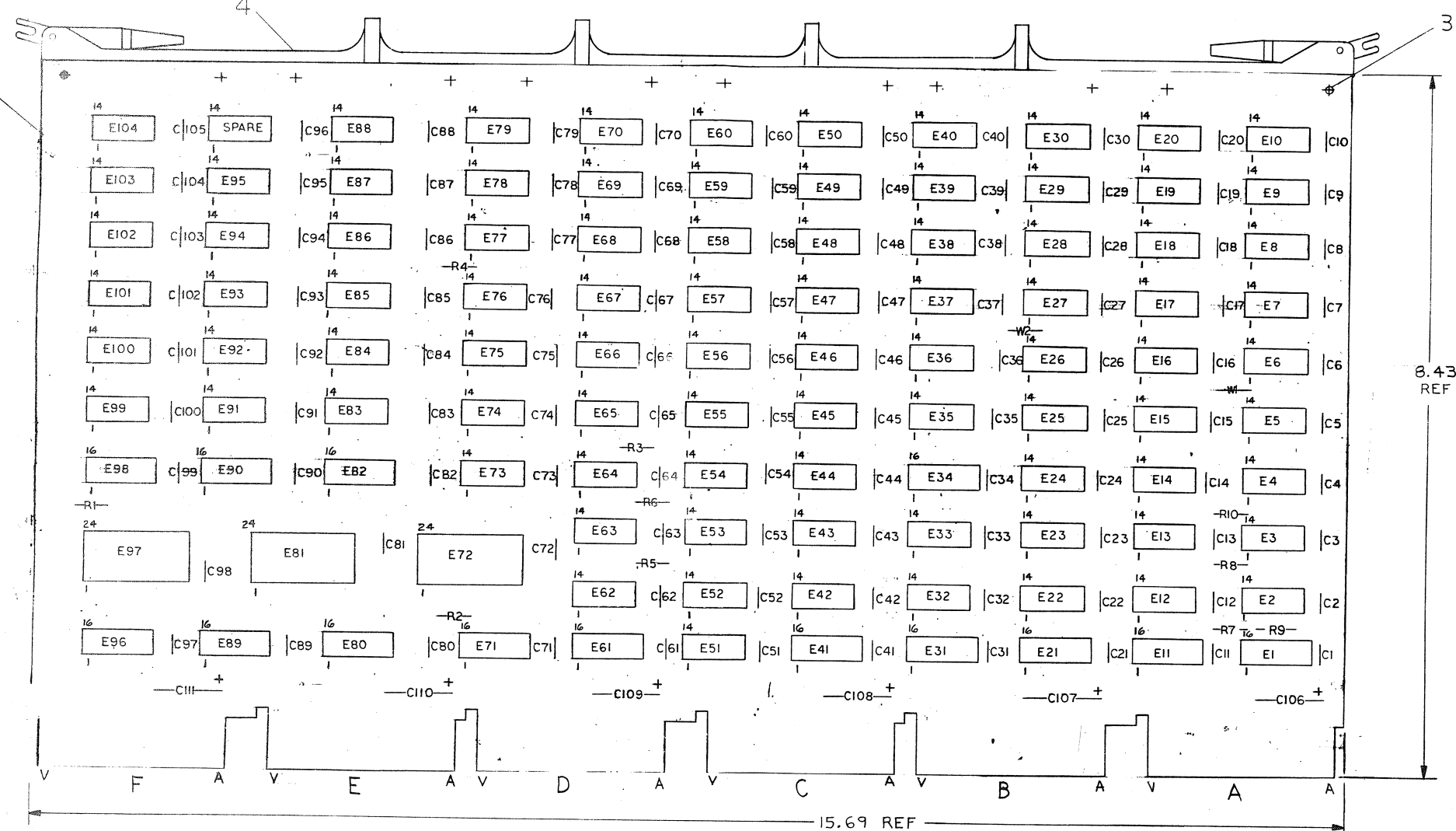


This drawing and specifications herein are the property of Digital Equipment Corporation and shall not be reproduced or copied in whole or in part as the basis for the manufacture of any items without written permission.

# NOTES:

- PIN NOTATION THROUGHOUT IS ORDERED UPON MODULE PLACEMENT IN THE K011-A PROCESSOR. MODULE REFERENCE ALONE IS OBTAINED BY DELETING THE NUMBER (SLOT LOCATION) AFTER THE FIRST LETTER.
- ALL SIGNALS THAT HAVE MODULE PINS ARE SO NOTED. OUTPUT SIGNALS WITH MODULE PINS ARE BROUGHT TO THE RIGHT SIDE OF THE PRINT.
- PROCESSOR SIGNAL PREFIX NOTATION (K2-1 FOR EXAMPLE) IDENTIFIES THE SIGNAL SOURCE (PRINT AND MODULE). THE FIRST NUMBER AFTER THE K INDICATES THE MODULE PRINT SET, WHILE THE SECOND INDICATES THE SHEET WITHIN THE SET. SIGNALS WITH A "BUS" PREFIX REPRESENT A "WIRED OR" SITUATION, AND MULTIPLE SOURCES FOR THE SIGNAL CAN EXIST.
- UNLESS OTHERWISE NOTED: RESISTANCE IS IN OHMS; CAPACITANCE IS IN PICOFARRADS.

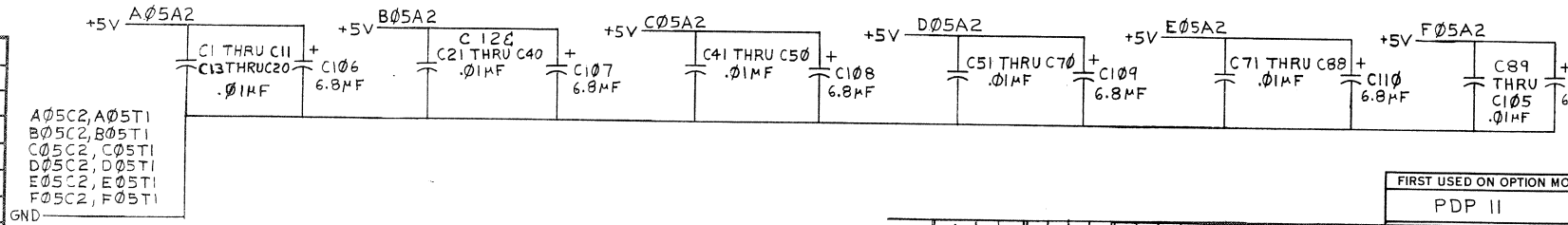


2	W1, W2	INSULATED JUMPER	9009185	32
12		EYELET	9006732	31
1	E1	I.C. DEC 74157	1910655	30
4	E21, E71, E96, E41	I.C. DEC 74175	1910651	29
3	E81, E97, E72	I.C. DEC 74150	1910153	28
1	E82	I.C. DEC 74153	1909937	27
2	E90, E98	I.C. DEC 74151	1909936	26
11	E5, E8, E29, E33, E37, E45, E62, E75, E86, E92, E95	I.C. DEC 74H04	1909931	25
6	E11, E31, E34, E61, E80, E89	I.C. DEC 8251	1909594	24
6	E20, E22, E23, E27, E32, E56	I.C. DEC 8815	1909713	23
7	E14, E36, E51, E79, E83, E84, E59	I.C. DEC 74H11	1909267	22
1	E26	I.C. DEC 74H61	1909065	21
2	E6, E7	I.C. DEC 74H60	1909064	20
3	E39, E17, E57	I.C. DEC 74H53	1909062	19
5	E4, E28, E52, E53, E54	I.C. DEC 74H52	1909061	18
3	E87, E49, E19	I.C. DEC 74H50	1909060	17
5	E24, E67, E68, E69, E70	I.C. DEC 74H30	1909059	16
4	E12, E13, E38, E102	I.C. DEC 74H21	1909058	15
8	E15, E40, E42, E64, E77, E104, E47, E101	I.C. DEC 74H10	1909057	14
14	E2, E3, E18, E35, E43, E48, E58, E73, E76, E78, E85, E88, E93, E99	I.C. DEC 74H00	1909056	13
7	E9, E10, E16, E44, E60, E100, E103	I.C. DEC 7402	1909004	12
7	E25, E30, E46, E55, E65, E66, E94	I.C. DEC 74H20	1905635	11
1	E50	I.C. DEC 74H40	1905586	10
3	E63, E74, E91	I.C. DEC 7400	1905575	6
10	RI THRU R10	RES. 1K 1/4W ±5%	1300365	3
1		HANDLE MODULE	1210711-02	4
105	C1 THRU C105	CAP. 0.1MF 100V ±20% DISC	1001610	3
6	C106 THRU C111	CAP. 6.8MF 35V ±20% STANT	1000067	2
1		ETCHED CIRCUIT BOARD	5009982	1

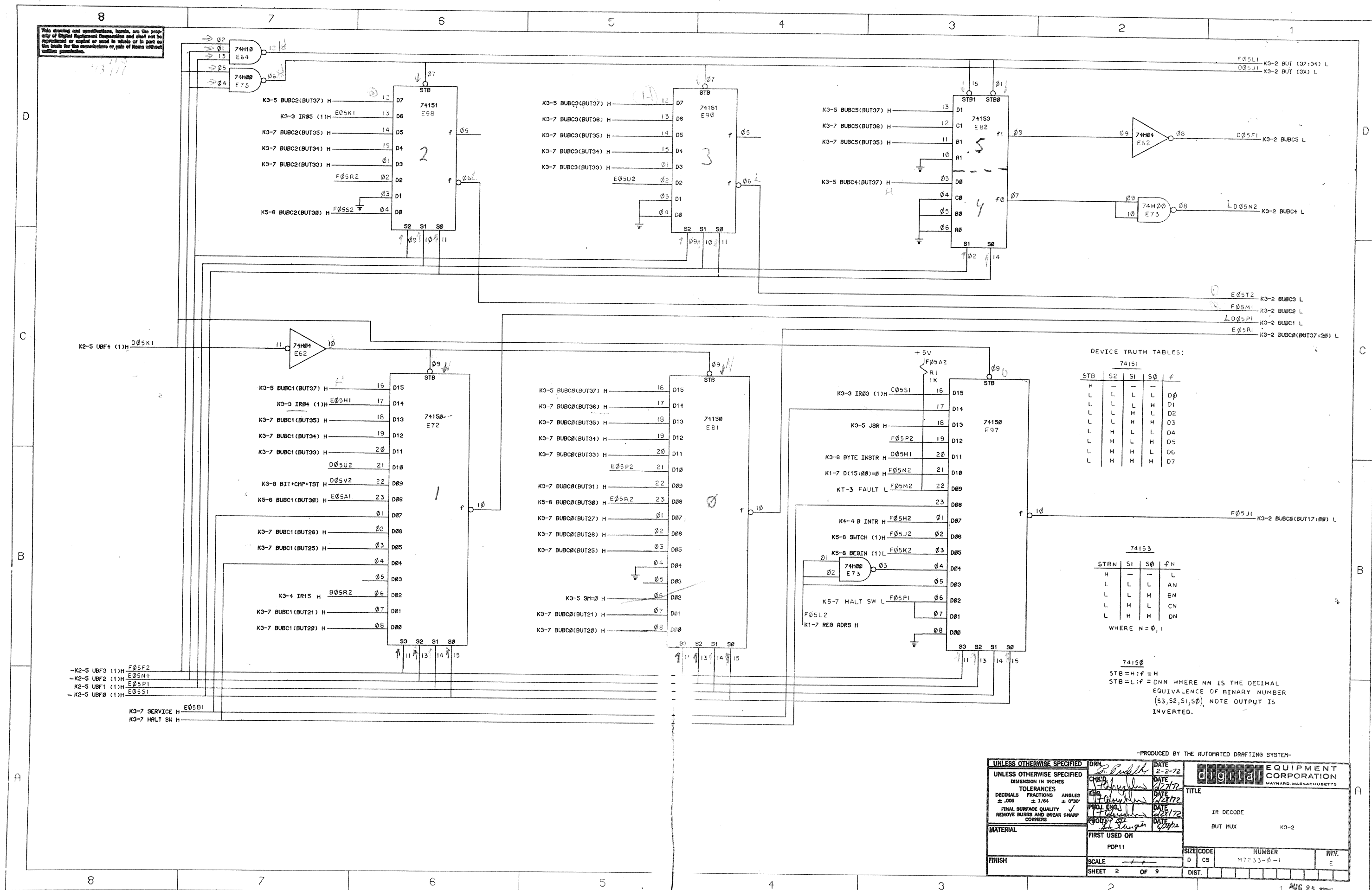
QTY	REF DESIGNATION	DESCRIPTION	PART NO.	ITEM NO.
3	E63, E74, E91	I.C. DEC 7400	1905575	6
10	RI THRU R10	RES. 1K 1/4W ±5%	1300365	3
1		HANDLE MODULE	1210711-02	4
105	C1 THRU C105	CAP. 0.1MF 100V ±20% DISC	1001610	3
6	C106 THRU C111	CAP. 6.8MF 35V ±20% STANT	1000067	2
1		ETCHED CIRCUIT BOARD	5009982	1


FIRST USED ON OPTION MODEL		PDP 11	
ETCH BOARD REV		C	D
DRN	DATE	6-3-72	
CHK	DATE	5/27/72	
ENG	DATE	5/28/72	
PRD	DATE	6/28/72	
NEXT HIGHER ASSY		K011-A	
SCALE	1 OF 9	SHEET	
SEMICONDUCTOR CONVERSION CHART		REV. E	
DEC NO.	EIA NO.	DEC NO.	EIA NO.
SIZE CODE		NUMBER	
DCS		M7233-0-1	
DIST.		REV. E	

DEC 74157	8	16
DEC 74175	8	16
DEC 74150	12	24
DEC 74153	8	16
DEC 74151	8	16
DEC 8251	8	16
IC TYPE	GND	+5V
GND AND 5V ARE USUALLY PIN 7 AND 14 RESPECTIVELY. EXCEPTIONS ARE ABOVE.		
IC PIN LOCATIONS		

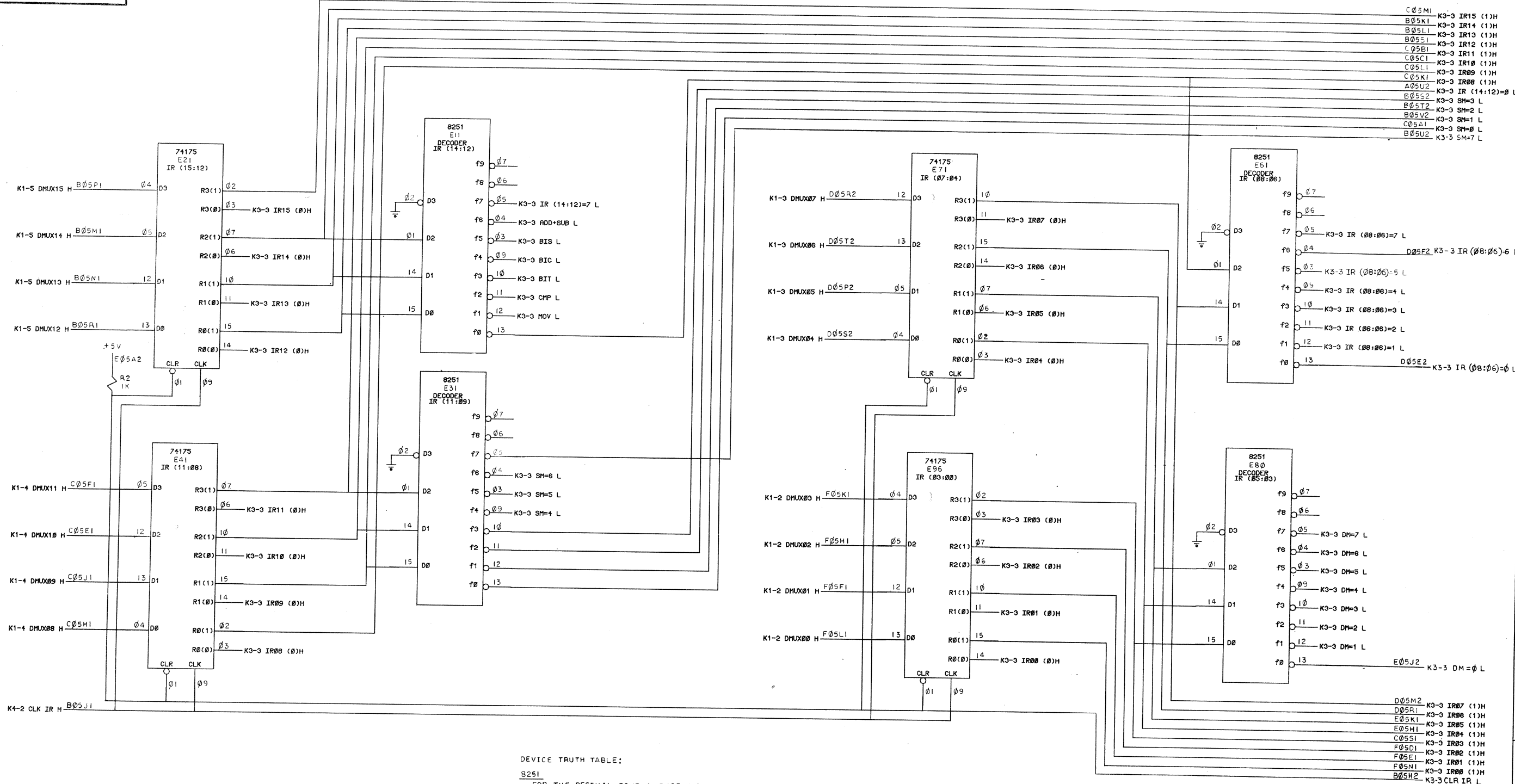


DEC FORM NO. DRD-135A



UNLESS OTHERWISE SPECIFIED		DRN.	DATE		 <b>DIGITAL EQUIPMENT CORPORATION</b> MAYNARD, MASSACHUSETTS	
UNLESS OTHERWISE SPECIFIED		CHLD.	DATE			
DIMENSION IN INCHES		ENG.	DATE		TITLE  IR DECODE  BUT MUJ	
TOLERANCES		PROJ. ENGR.	DATE			
DECIMALS FRACTIONS ANGLES		CODED BY	DATE			
.005 ± 1/64 ± 0°30'						
FINIAL SURFACE QUALITY ✓ REMOVE BURRS AND BREAK SHARP CORNERS		FIRST USED ON		SIZE CODE NUMBER REV. D CS M7233-0-1 E		
MATERIAL		POP11		DIST.		
FINISH		SHEET 2 OF 9				

This drawing and specifications, herein, are the property of Digital Equipment Corporation and shall not be reproduced or copied or used in whole or in part as the basis for the manufacture or sale of items without written permission.



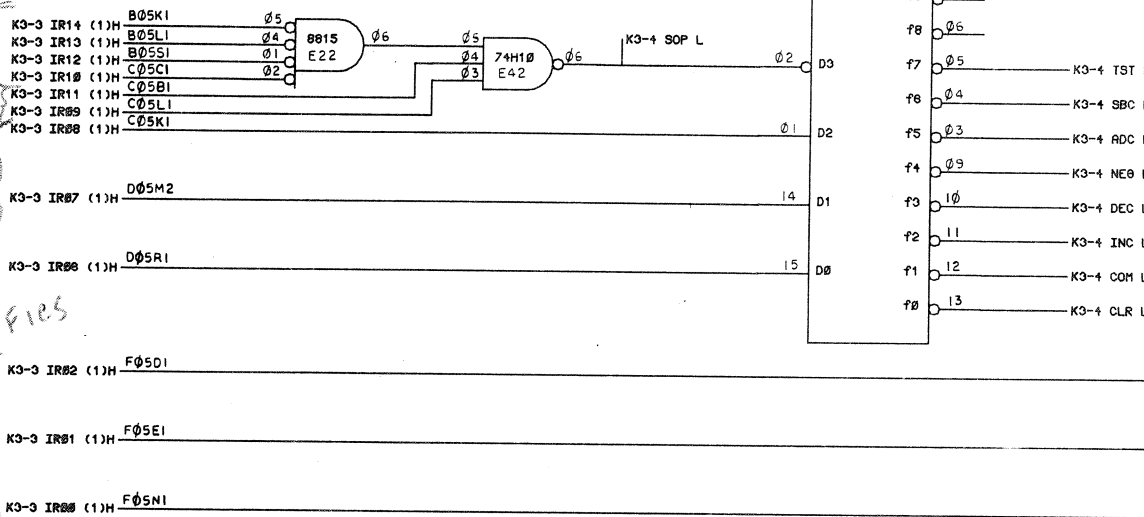
UNLESS OTHERWISE SPECIFIED		DATE	2-2-72	<b>digital EQUIPMENT CORPORATION</b> MAYNARD, MASSACHUSETTS TITLE IR DECODE IR & DECODE K3-3
UNLESS OTHERWISE SPECIFIED		CHKD	6/27/72	
TOLERANCES		DATE	6/28/72	
DECIMALS FRACTIONS ANGLES		DATE	6/28/72	
±.005 ± 1/64 ± 0°30'		DATE	6/28/72	SIZE CODE D CS NUMBER M7233-0-1 REV E
FINAL SURFACE QUALITY REMOVE BURRS AND BREAK SHARP CORNERS		DATE	6/28/72	
MATERIAL		FIRST USED ON		DIST.
FINISH		POP11		
SHEET 3 OF 9		SCALE		

This drawing and specifications, herein, are the property of Digital Equipment Corporation and shall not be reproduced or copied or used in whole or in part as the basis for the manufacture or sale of items without written permission.

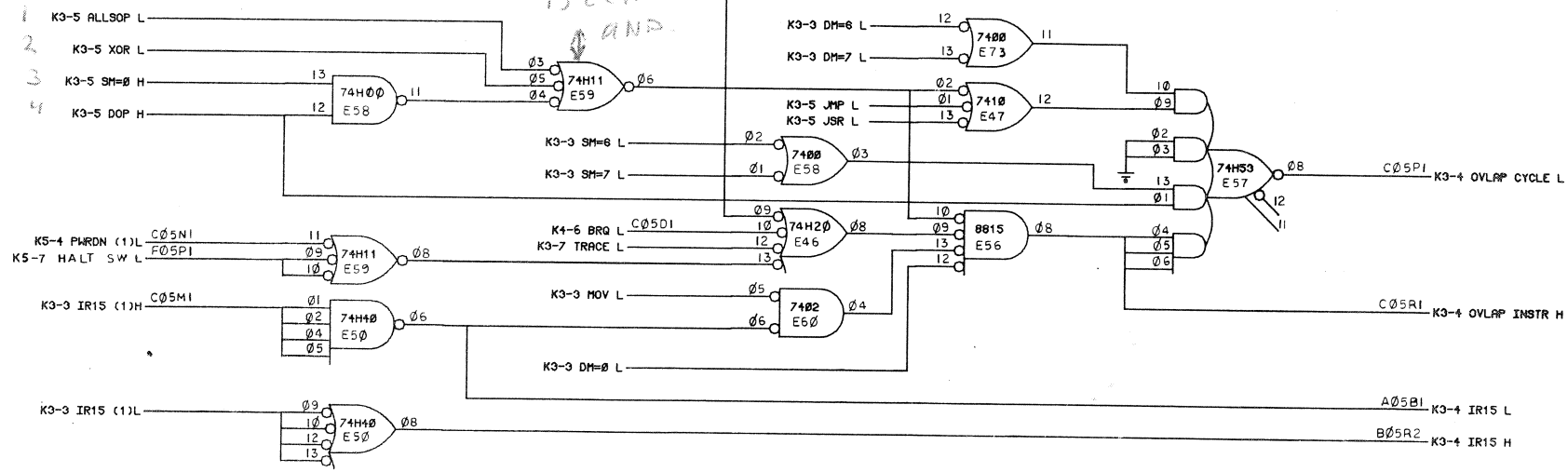
SUP INST EXC. ROTATING  
IF

IDENTIFIES  
SUB  
INST.

IDENTIFIES  
RST  
REQ.

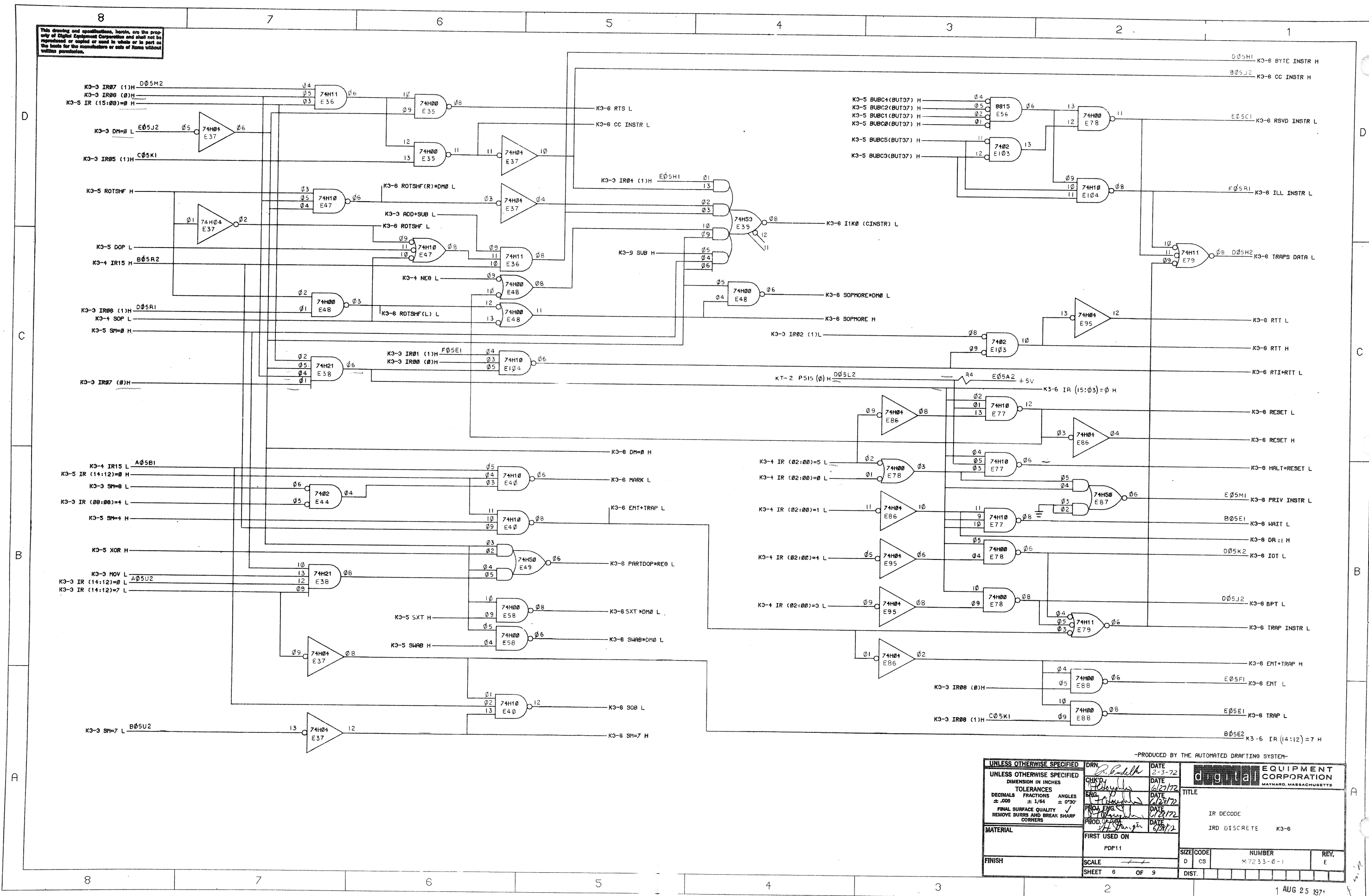


DEVICE TRUTH TABLE:  
8251  
FOR THE DECIMAL EQUIVALENCE, N, OF THE  
BINARY NUMBER (D3,D2,D1,D0), ONLY OUTPUT  
N IS ACTIVE (LOW) FOR  $0 \leq N < 10$



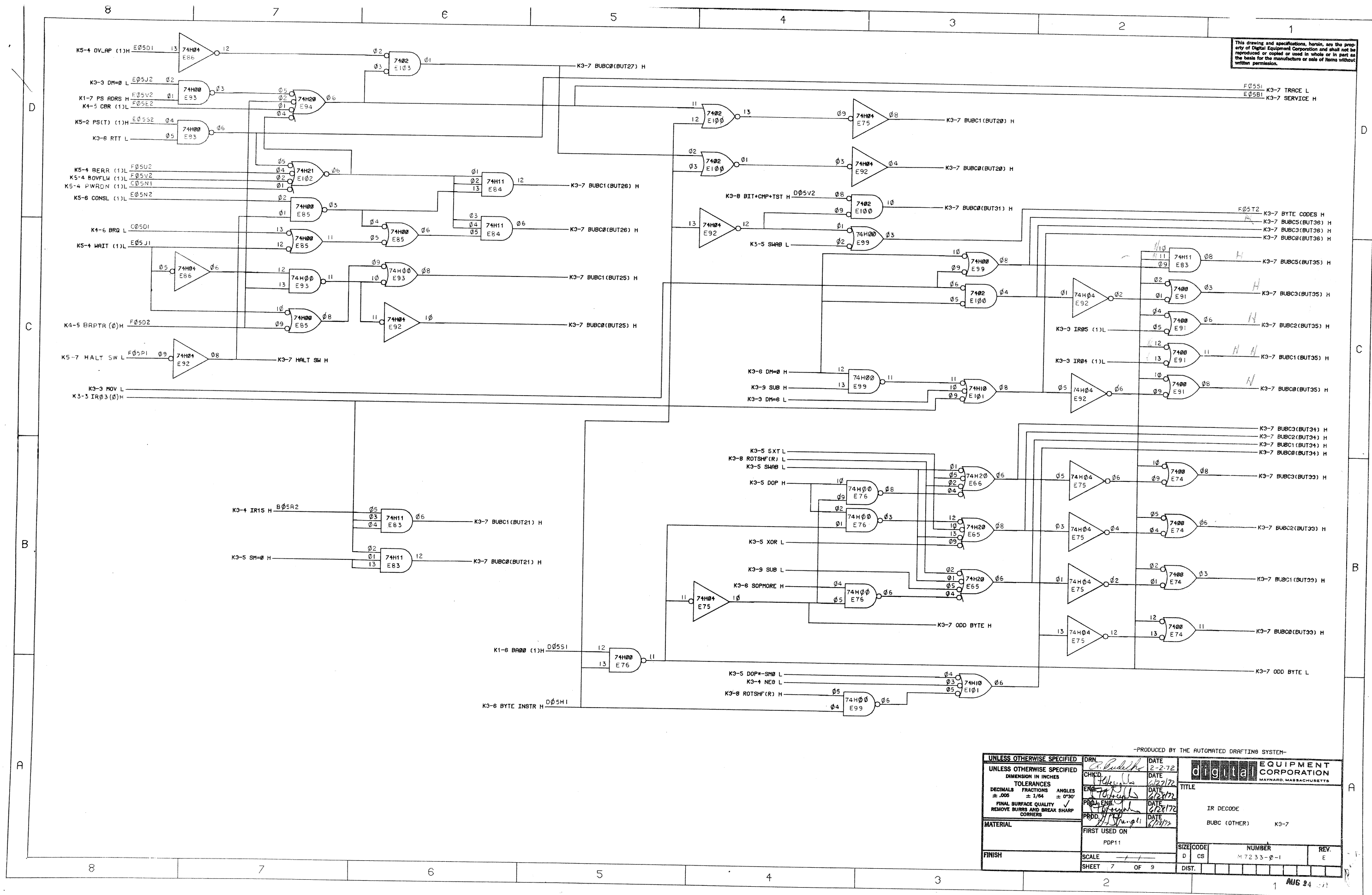


This drawing and specifications, herein, are the property of Digital Equipment Corporation and shall not be reproduced or copied or used in whole or in part as the basis for the manufacture or sale of items without written permission.



UNLESS OTHERWISE SPECIFIED		DRN	DATE	2-3-72	
UNLESS OTHERWISE SPECIFIED		CHK'D	DATE	6/27/72	
DIMENSION IN INCHES		ENG	DATE	6/28/72	
TOLERANCES		PROD. ENG.	DATE	6/28/72	
DECIMALS FRACTIONS ANGLES		PROD.	DATE	6/28/72	
± .005 ± 1/64 ± 0°30'					
FINAL SURFACE QUALITY					
REMOVE BURRS AND BREAK SHARP					
CORNERS					
MATERIAL		FIRST USED ON		PDP11	
FINISH		SCALE		SHEET 6 OF 9	
		DIST.		D CS	
		NUMBER		M7233-0-1	
		REV.		E	
		TITLE		IR DECODE	
				IRD DISCRETE K3-6	





This drawing and specifications, herein, are the property of Digital Equipment Corporation and shall not be reproduced or copied or used in whole or in part as the basis for the manufacture or sale of items without written permission.

D

C

B

A

D

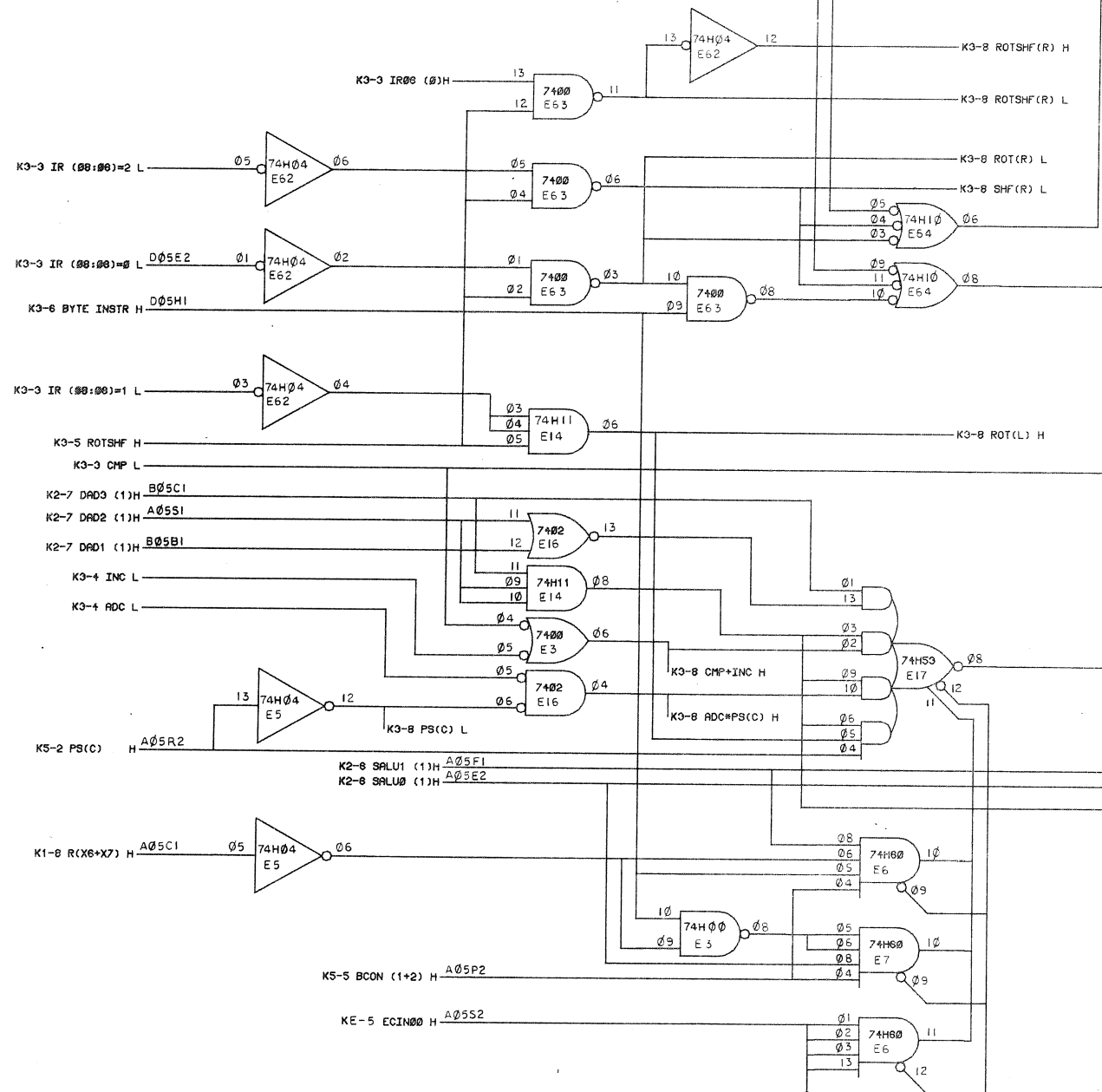
C

B

A

KE-5 ECOMUXS1 L D05E1  
KE-5 ECOMUXS0 L D05C1

+5V  
R5 1K  
R6 1K  
D05A2

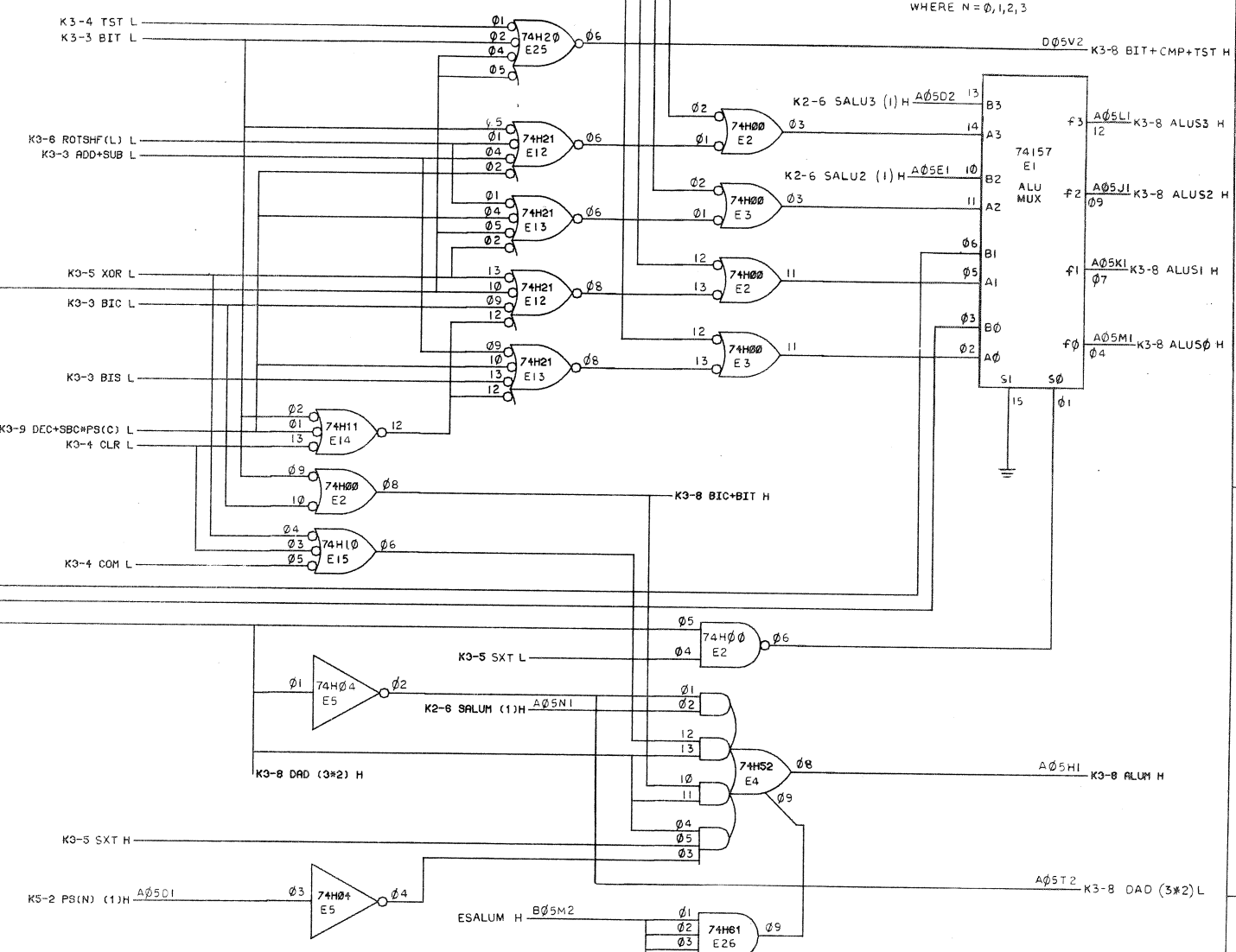


NOTE: THE W1 JUMPER IS REMOVED  
IF KE11-E OPTION IS INSTALLED

W1  
ECIN00

KE-5 ESALU3 L A05K2  
KE-5 ESALU2 L A05M2  
KE-5 ESALU1 L A05L2  
KE-5 ESALU0 L A05N2

+5V  
R9 1K  
R8 1K  
R7 1K  
R10 1K  
A05A2



DEVICE TRUTH TABLE:  
74157

STB	S0	FN
H	-	L
L	L	AN
L	H	BN

WHERE N = 0, 1, 2, 3

NOTE: THE W2 JUMPER DISABLES THE PRESENTLY  
UNUSED ESALUM INPUT.

W2  
ESALUM

-PRODUCED BY THE AUTOMATED DRAFTING SYSTEM-

DRN. <i>P. J. Delaney</i>	DATE 2-3-72	<b>digital EQUIPMENT CORPORATION</b> MAYNARD, MASSACHUSETTS
CHK'D. <i>P. J. Delaney</i>	DATE 6/27/72	
ENG. <i>P. J. Delaney</i>	DATE 6/28/72	
PRD. <i>P. J. Delaney</i>	DATE 6/28/72	
PROJ. <i>P. J. Delaney</i>	DATE 6/28/72	
FIRST USED ON		
PDP11		
SCALE <i>1/1</i>	SIZE CODE D CS	NUMBER M7233-0-1
SHEET 8 OF 9	DIST.	REV. E

IR DECODE  
ALU CONTROL K3-8

AUG 25 1971



This drawing and specifications, herein, are the property of Digital Equipment Corporation and shall not be reproduced or copied or used in whole or in part as the basis for the manufacture or sale of items without written permission.

D

C

B

A

8 7 6 5 4 3 2 1

UNLESS OTHERWISE SPECIFIED  
DIMENSIONS IN INCHES  
TOLERANCES  
DECIMALS FRACTIONS ANGLES  
 $\pm .005 \pm 1/64 \pm 0^\circ 30'$   
FIML SURFACE QUALITY  
REMOVE BURRS AND BREAK SHARP CORNERS

MATERIAL

FINISH

DATE 2-3-72  
DATE 6/27/72  
DATE 10-2-72  
DATE 11/15/72

CHKD.  
ENG.  
APP'D.  
PROJ.  
FIRST USED ON  
PDP-11

SCALE 1 OF 9  
SHEET 9 OF 9

digital EQUIPMENT CORPORATION  
MAYNARD, MASSACHUSETTS

TITLE  
IR DECODE  
CODES C,V K3-9

SIZE CODE NUMBER REV.  
D CS M7233-0-1 E

DIST.

1 AUG 25 1971

UNLESS OTHERWISE SPECIFIED						DRAWN R. Puddick	DATE 2-3-72	<b>digital EQUIPMENT CORPORATION</b> MAYNARD, MASSACHUSETTS			
UNLESS OTHERWISE SPECIFIED DIMENSION IN INCHES						CHECKED J. Longwell	DATE 6/27/72	TITLE  IR DECODE  CODES C,Y K3-9			
TOLERANCES											
DECIMALS ± .008	FRACTIONS ± 1/64	ANGLES ± 0°30'				ENG. J. Longwell	DATE 10-2-72				
FINAL SURFACE QUALITY ✓ REMOVE BURRS AND BREAK SHARP CORNERS						MATERIAL ENGR. J. Longwell	DATE 10-2-72				
PROOF J. Longwell						DATE 6/28/72					
FIRST USED ON  PDP-11						SIZE CODE		NUMBER		REV.	
FINISH						D CS		M7233-0-1		E	
SHEET 9 OF 9						DIST.					