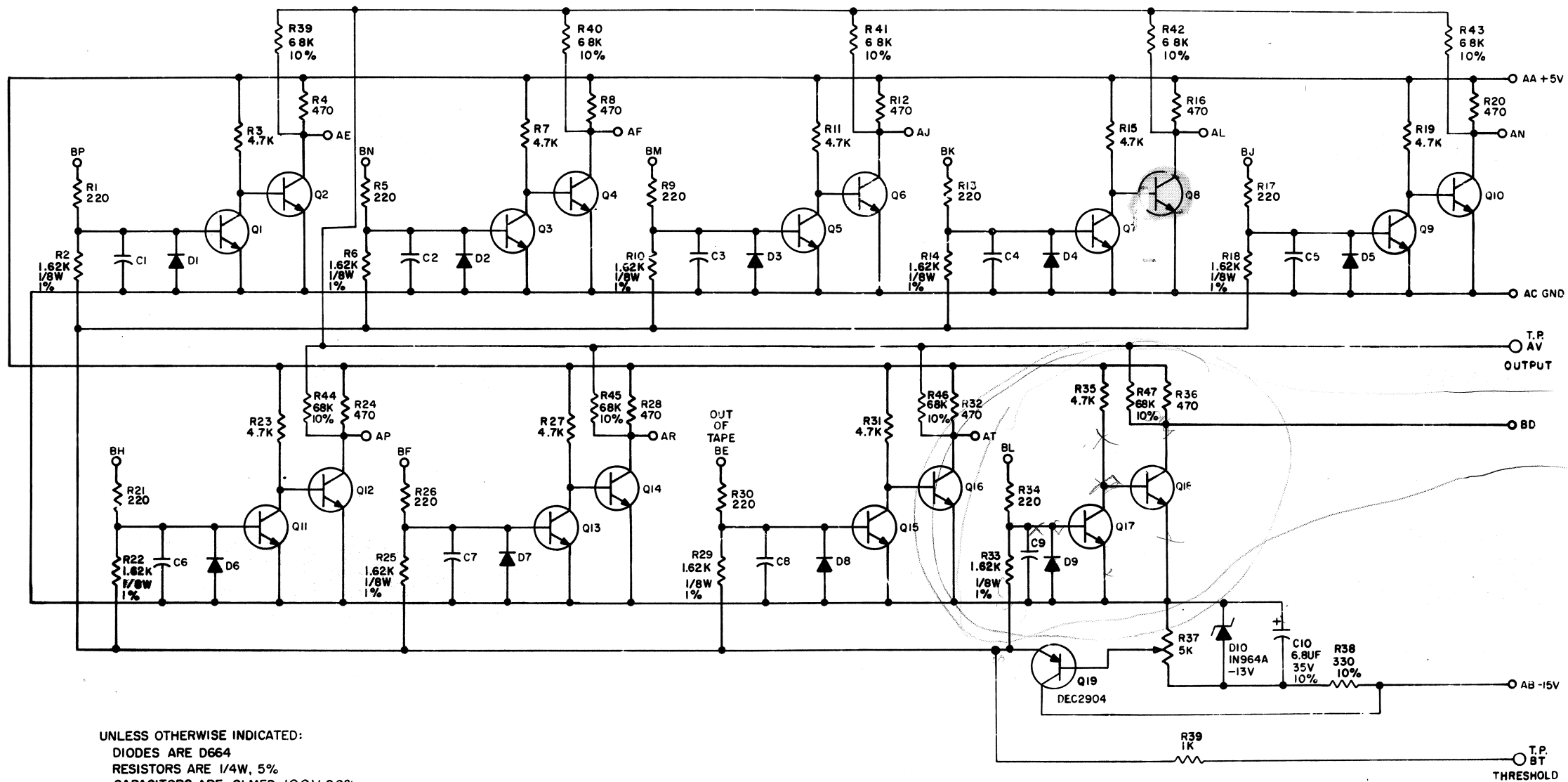


THIS SCHEMATIC IS FURNISHED ONLY FOR TEST AND MAINTENANCE PURPOSES. THE CIRCUITS ARE PROPRIETARY IN NATURE AND SHOULD BE TREATED ACCORDINGLY. COPYRIGHT 1969 BY DIGITAL EQUIPMENT CORPORATION



UNLESS OTHERWISE INDICATED:
 DIODES ARE D664
 RESISTORS ARE 1/4W, 5%
 CAPACITORS ARE .01 MFD, 100V, 20%
 TRANSISTORS ARE 2N3646
 ○ INDICATES TEST POINT

REV	NO.	REV.
1	00001	A
2	00002	B
3	00003	C

DEC FORM NO. DRC 102

DRN	DATE
A. BUTLER	9/1/69
CHK'D	DATE
...	...
ENG	DATE
R. O. ...	6/1/69
PROD.	DATE
...	...

TRANSISTOR & DIODE CONVERSION CHART			
DEC	EIA	DEC	EIA
2N3646	2N3009	IN964A -13V	SAME
D664	IN3606	DEC2904	2N1132

digital
 EQUIPMENT CORPORATION
 MAYNARD, MASSACHUSETTS

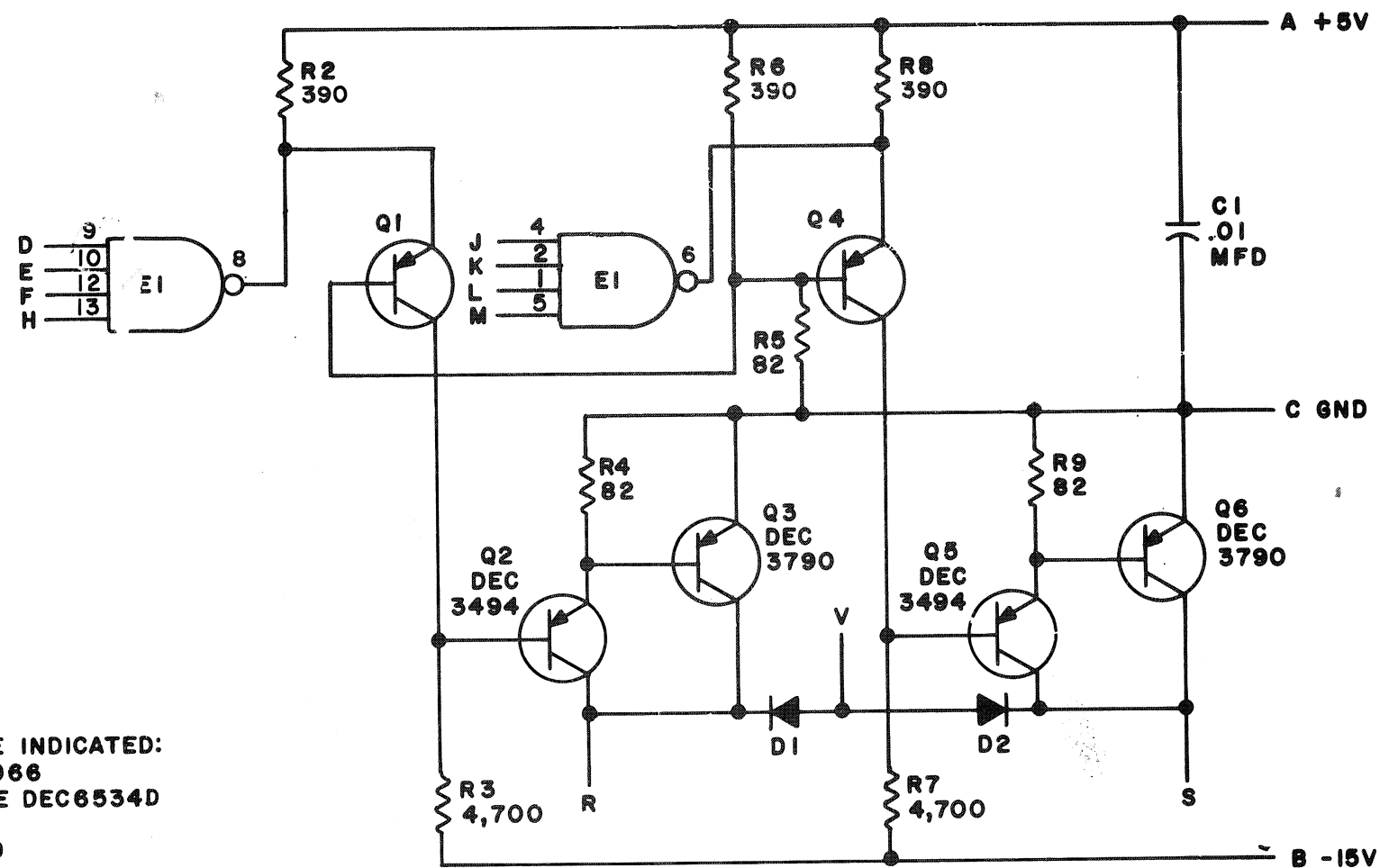
TITLE PHOTO TRANSISTOR AMPLIFIER G918			
SIZE	CODE	NUMBER	REV.
C	CS	G918-0-1	B
PRINTED CIRCUIT REV.			

REV B
 NUMBER 00001

5 107 324 414 423 P.11K.

THIS SCHEMATIC IS FURNISHED ONLY FOR TEST AND MAINTENANCE PURPOSES. THE CIRCUITS ARE PROPRIETARY IN NATURE AND SHOULD BE TREATED ACCORDINGLY. COPYRIGHT 1967 BY DIGITAL EQUIPMENT CORPORATION

REV. E
NUMBER M040-0-0-1
SIZE B
CODE CS



UNLESS OTHERWISE INDICATED:
DIODES ARE MR2066
TRANSISTORS ARE DEC6534D
E1 IS DEC7420N
PIN 7 ON IC = GND
PIN 14 ON IC = +5V
RESISTORS ARE 1/4W, 10%

PARTS LIST A-PL-M040-0-0

REV.	CHG.	NO.	REV.
00001	00002		

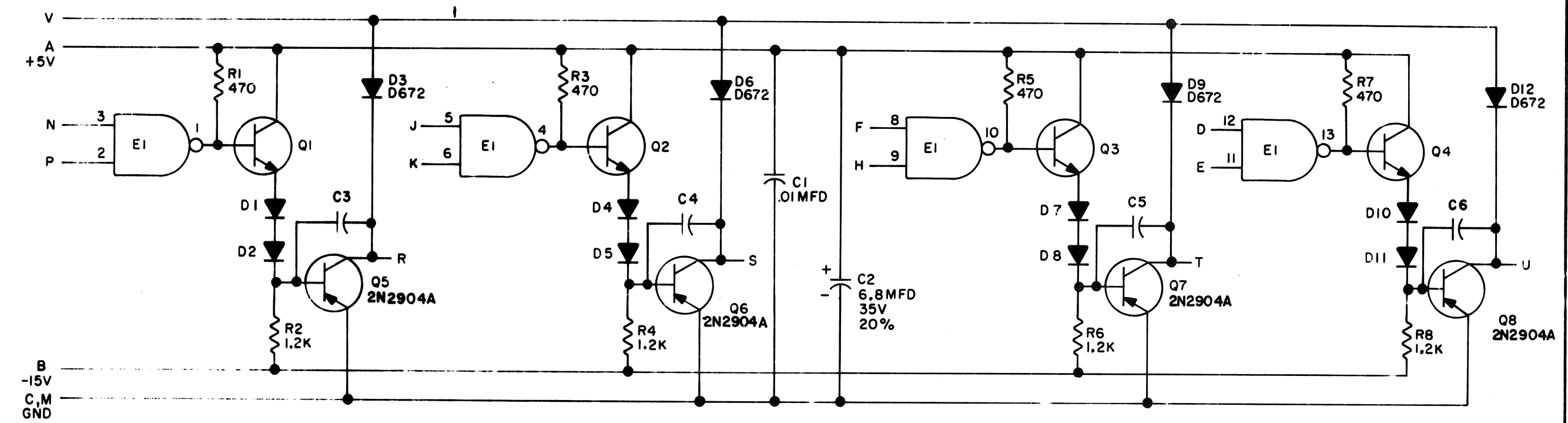
DRN.	DATE
M. Keller	9-14-67
CHK'D	DATE
ENG	DATE
PROD	DATE

TRANSISTOR & DIODE CONVERSION CHART			
DEC	EIA	DEC	EIA
DEC3494	SAME		
DEC3790	2N3790		
DEC6534D	MPS6534		
D662	IN645		
MR2066	IN4003		

digital
EQUIPMENT
CORPORATION
MAYNARD, MASSACHUSETTS

TITLE			
SOLENOID DRIVER M040			
SIZE	CODE	NUMBER	REV.
B	CS	M040-0-1	E
PRINTED CIRCUIT REV.			

THIS SCHEMATIC IS FURNISHED ONLY FOR TEST AND MAINTENANCE PURPOSES. THE CIRCUITS ARE PROPRIETARY IN NATURE AND SHOULD BE TREATED ACCORDINGLY. COPYRIGHT 1969 BY DIGITAL EQUIPMENT CORPORATION

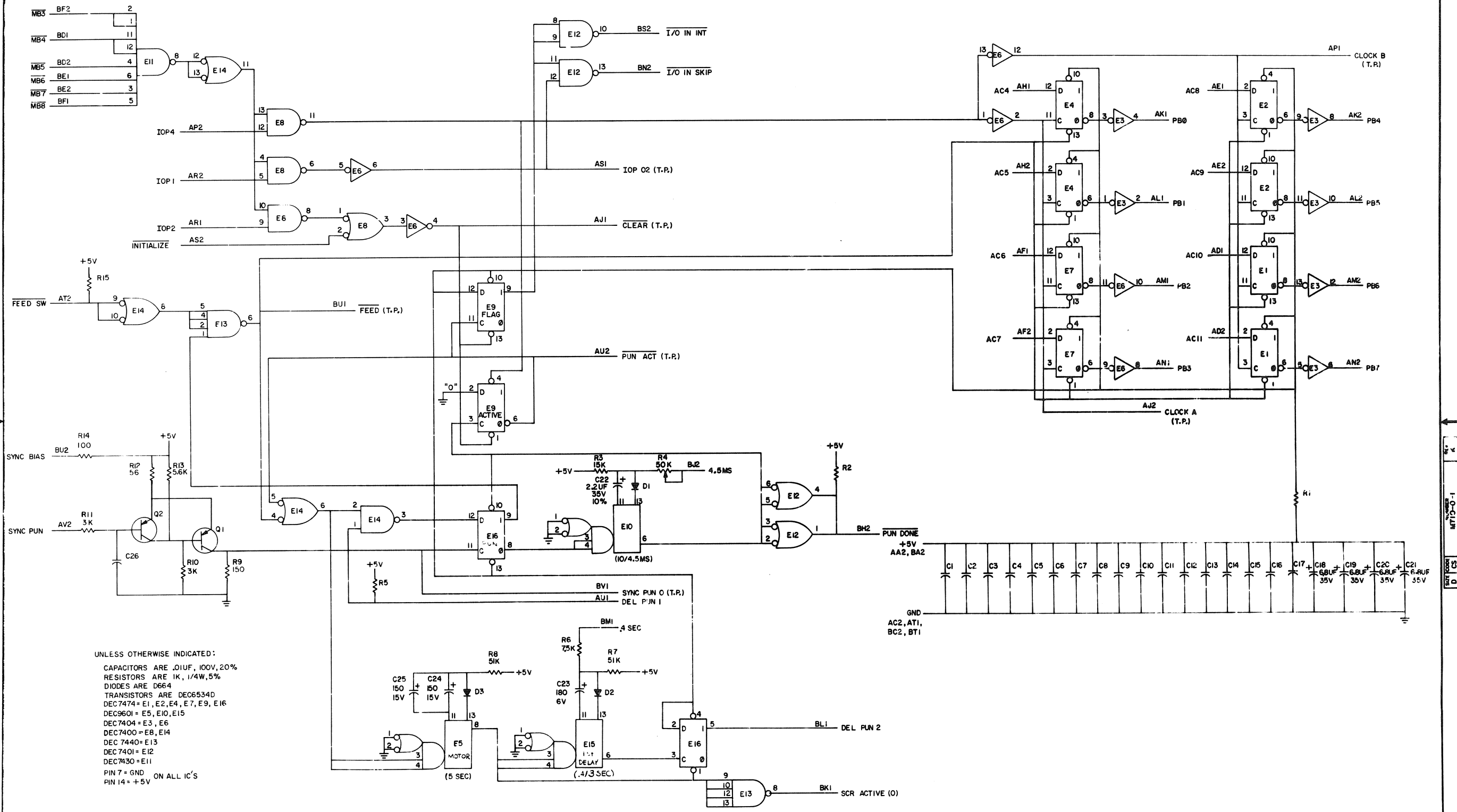


UNLESS OTHERWISE INDICATED
 RESISTORS ARE 1/4W, 10%
 DIODES ARE D664
 EI IS DEC740IN
 TRANSISTORS ARE DEC3009B
 PIN 7 ON EACH IC = GND
 PIN 14 ON EACH IC = +5V
 CAPACITORS ARE 100pf, 100V, 5%

<div> <div>REV</div> <div>B</div> </div> <div> <div>CHK</div> <div>NO</div> </div> <div> <div>00001</div> <div>00002</div> </div>				<div>DRN</div> <div>DATE</div>		<div>TRANSISTOR & DIODE CONVERSION CHART</div> <table border="1"> <tr> <th>DEC</th> <th>EIA</th> <th>DEC</th> <th>EIA</th> </tr> <tr> <td>D664</td> <td>IN3606</td> <td></td> <td></td> </tr> <tr> <td>2N2904A</td> <td>2N2904</td> <td></td> <td></td> </tr> <tr> <td>DEC3009B</td> <td>2N3009</td> <td></td> <td></td> </tr> </table>				DEC	EIA	DEC	EIA	D664	IN3606			2N2904A	2N2904			DEC3009B	2N3009			<div>digital</div> <div>EQUIPMENT CORPORATION</div> <div>MAYNARD, MASSACHUSETTS</div>		<div>TITLE</div> <div>4-IOOMA SOLENOID DRIVER M044</div>	
DEC	EIA	DEC	EIA																										
D664	IN3606																												
2N2904A	2N2904																												
DEC3009B	2N3009																												
<div>PROD</div> <div>DATE</div>		<div>SIZE</div> <div>B</div>		<div>CODE</div> <div>CS</div>		<div>NUMBER</div> <div>M044-0-1</div>		<div>REV</div> <div>C</div>																					
<div>PRINTED CIRCUIT REV</div> <div>B</div>																													

THIS SCHEMATIC IS FURNISHED ONLY FOR TEST AND MAINTENANCE PURPOSES. THE CIRCUITS ARE PROPRIETARY IN NATURE AND SHOULD BE TREATED ACCORDINGLY. COPYRIGHT 1970 BY DIGITAL EQUIPMENT CORPORATION.

1-0-0111N
SC 0
REV 1/75



UNLESS OTHERWISE INDICATED:
CAPACITORS ARE .01UF, 100V, 20%
RESISTORS ARE 1K, 1/4W, 5%
DIODES ARE D664
TRANSISTORS ARE DEC6534D
DEC7474 = E1, E2, E4, E7, E9, E16
DEC9601 = E5, E10, E15
DEC7404 = E3, E6
DEC7400 = E8, E14
DEC7440 = E13
DEC7401 = E12
DEC7430 = E11
PIN 7 = GND ON ALL IC'S
PIN 14 = +5V

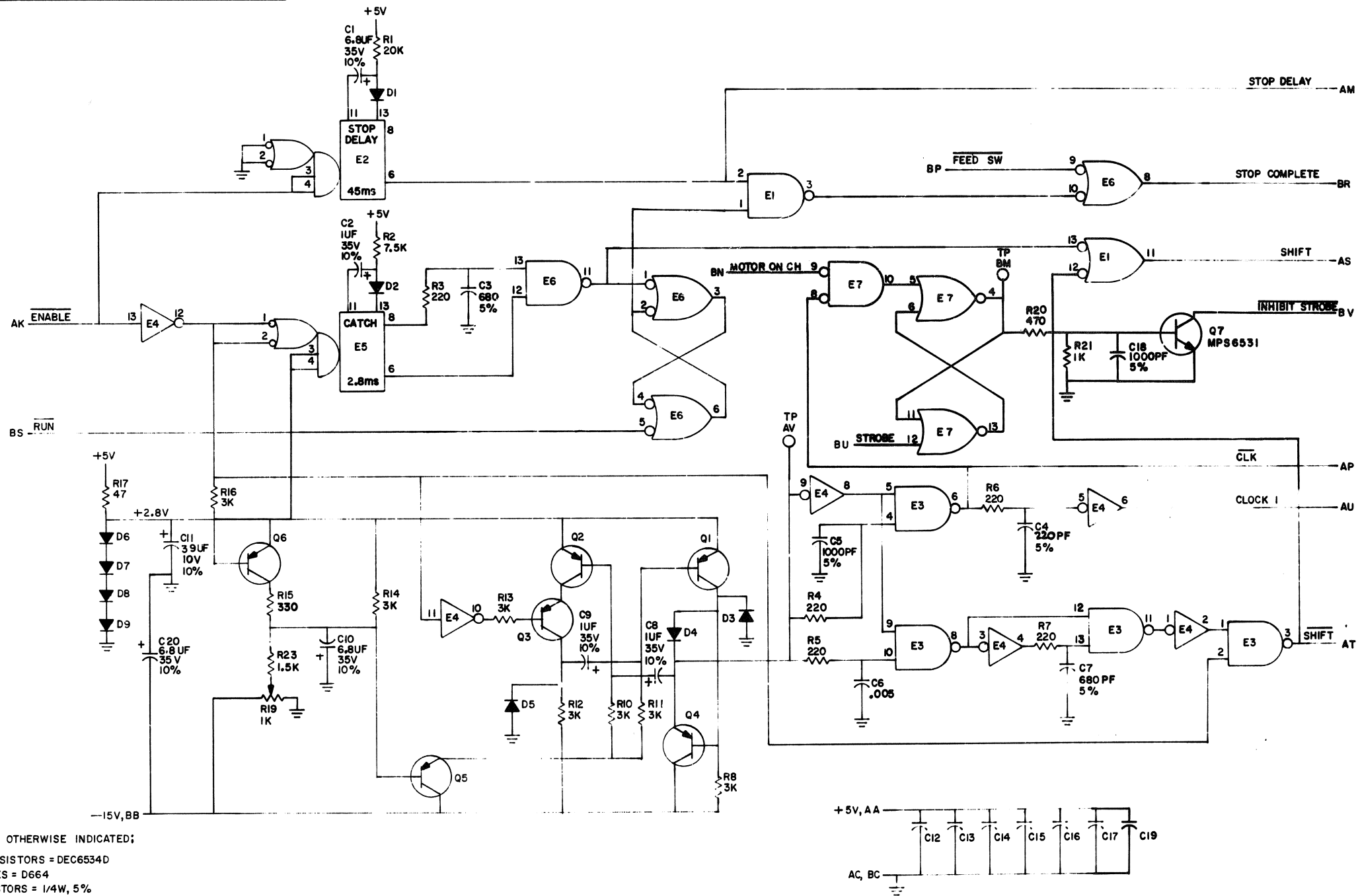
REV	DATE	BY	CHKD
1	11/1/71	W. J. H.	W. J. H.
2	11/1/71	W. J. H.	W. J. H.

DATE	BY	CHKD
11/1/71	W. J. H.	W. J. H.
11/1/71	W. J. H.	W. J. H.

TRANSISTOR & DIODE CONVERSION CHART	DEC	EIA	DEC	EIA
DEC 664	D664	IN3608	NONE	
DEC 6534D	DEC6534D	NONE		

digital		PUNCH CONTROL M710	
SIZE D	CODE CS	NUMBER M710-0-1	REV K
EQUIPMENT CORPORATION		PRINTED CIRCUIT REV H	

THIS SCHEMATIC IS FURNISHED ONLY FOR TEST AND MAINTENANCE PURPOSES. THE CIRCUITS ARE PROPRIETARY IN NATURE AND SHOULD BE TREATED ACCORDINGLY. COPYRIGHT 1967 BY DIGITAL EQUIPMENT CORPORATION



UNLESS OTHERWISE INDICATED:

TRANSISTORS = DEC6534D
DIODES = D664
RESISTORS = 1/4W, 5%
CAPACITORS = .01uF, 100V, 20%
E1, E3, E6 = DEC7400
E4 = DEC7404
E2, E5 = DEC9601
PIN 7 = GND ON ALL IC'S
PIN 14 = +5V
E7 = DEC7402

REV	NO	REV	NO
AY	00002	E	00006
REV & CANCELS	BY	REV & CANCELS	BY
BY	00005	BY	00007
BY	00008	BY	00009

DEC FORM NO
DRC 102

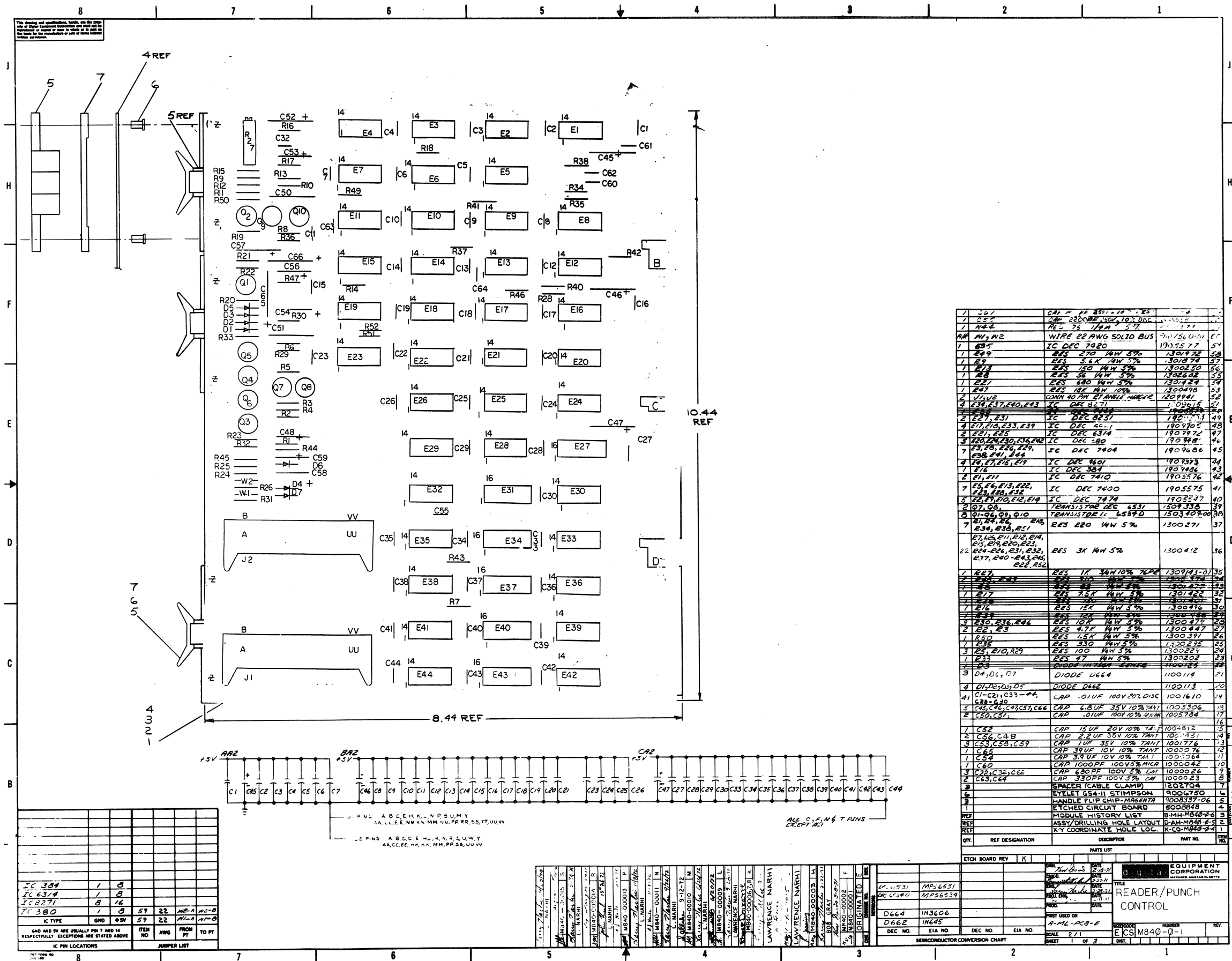
DRN	M. HALLER	DATE	10/16/67
CHK'D	R. SILVERMAN	DATE	11/2/67
ENG	R. G. SOGGE	DATE	11/2/67
PROD		DATE	

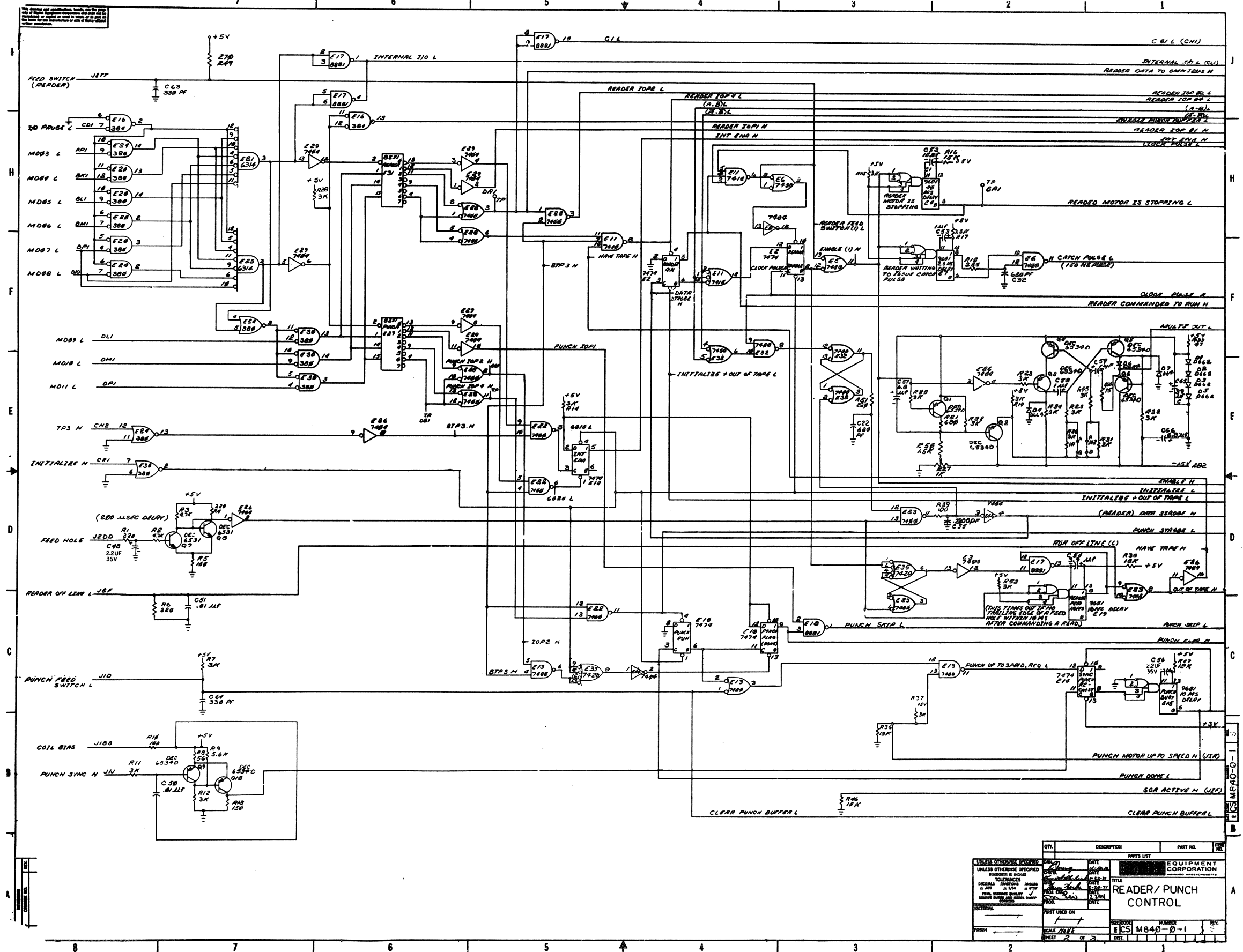
TRANSISTOR & DIODE CONVERSION CHART			
DEC	EIA	DEC	EIA
DEC6534D	MPS6534	IN758	SAME
D664	1N3606		
DEC6531	MPS6531		

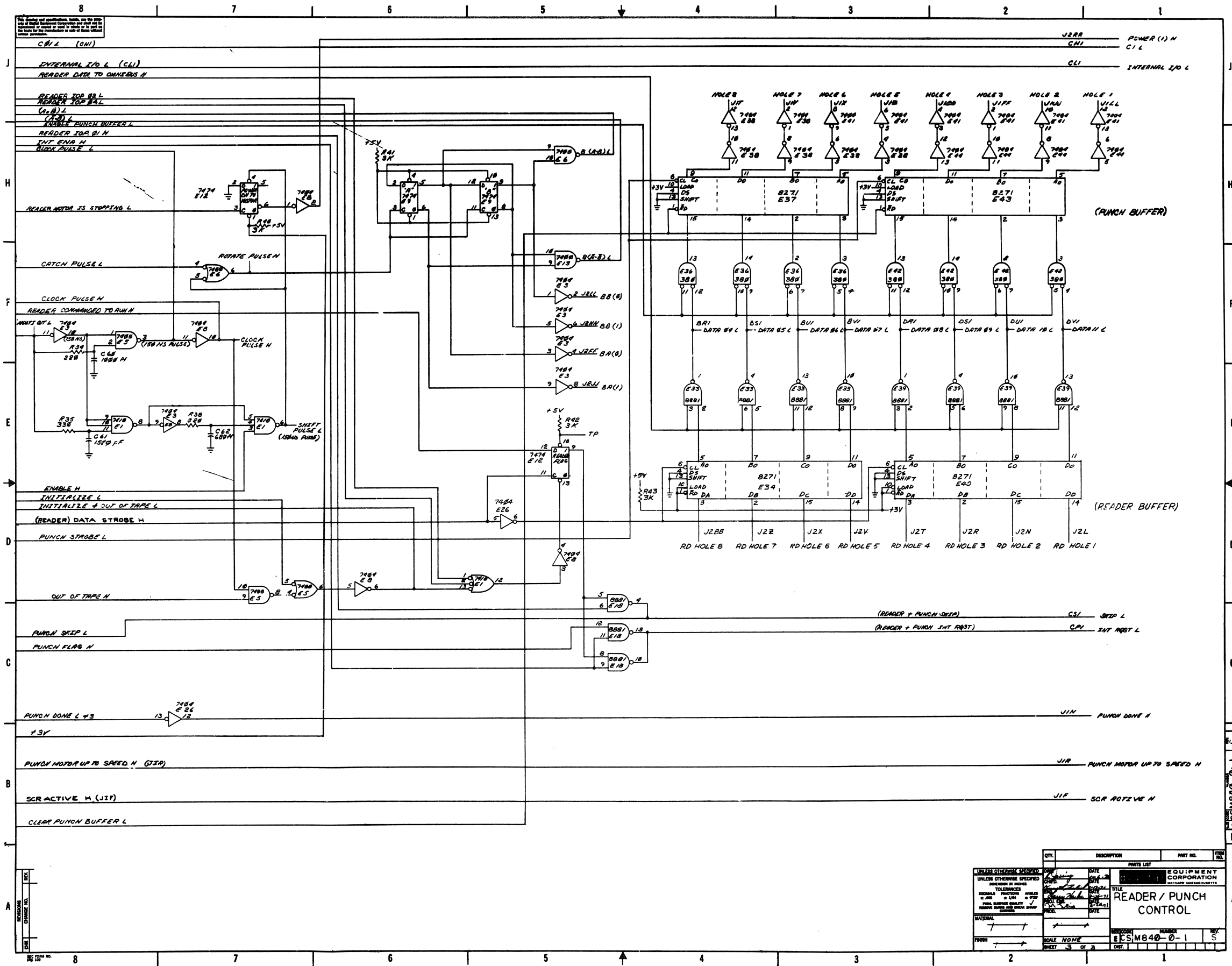
digital
EQUIPMENT
CORPORATION
MAYNARD, MASSACHUSETTS

TITLE READER CLOCK M715			
SIZE	CODE	NUMBER	REV
C	CS	M715-0-1	L
PRINTED CIRCUIT REV			F

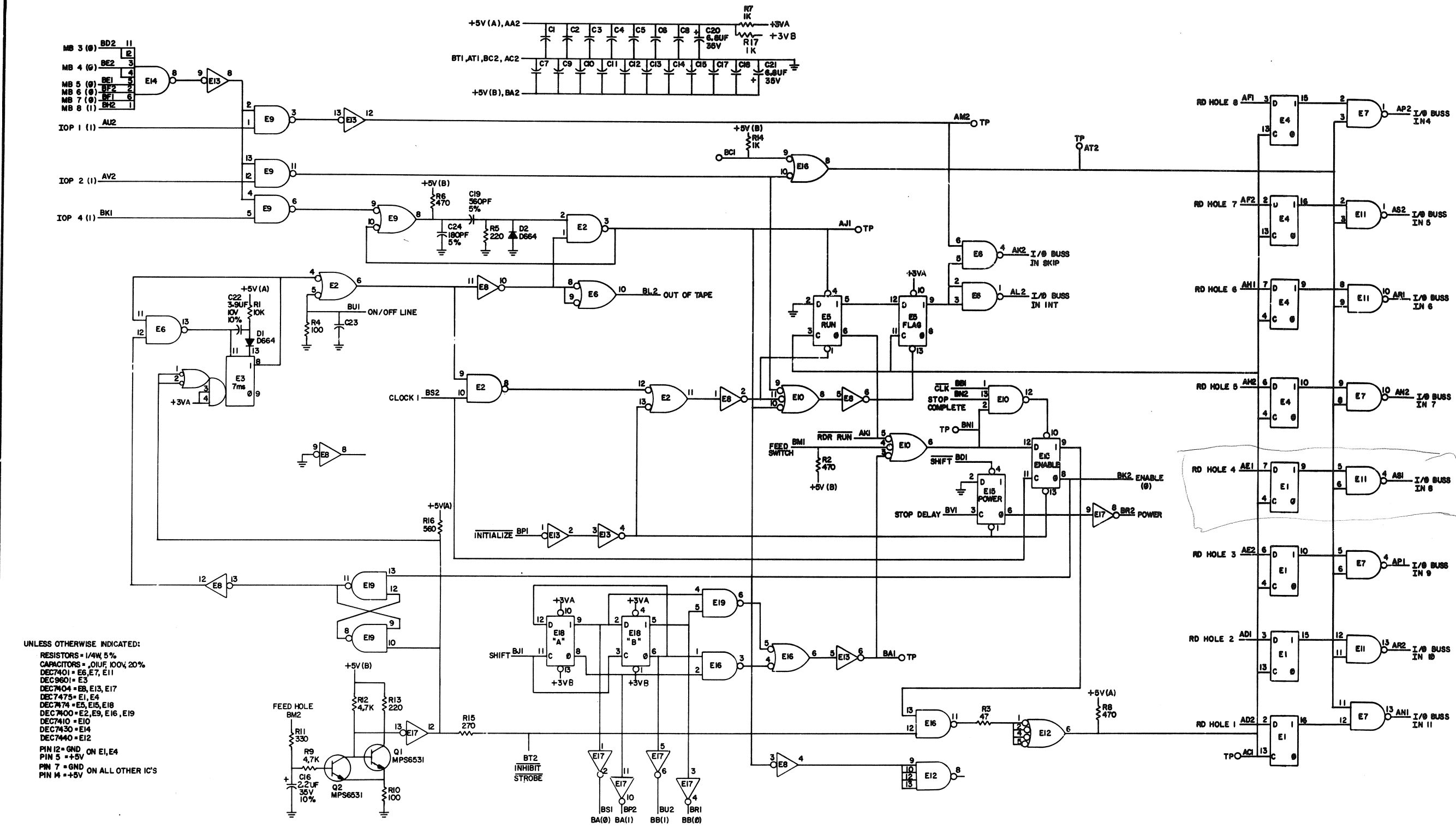
REV	L
NUMBER	M715-C-1
SIZE CODE	C CS







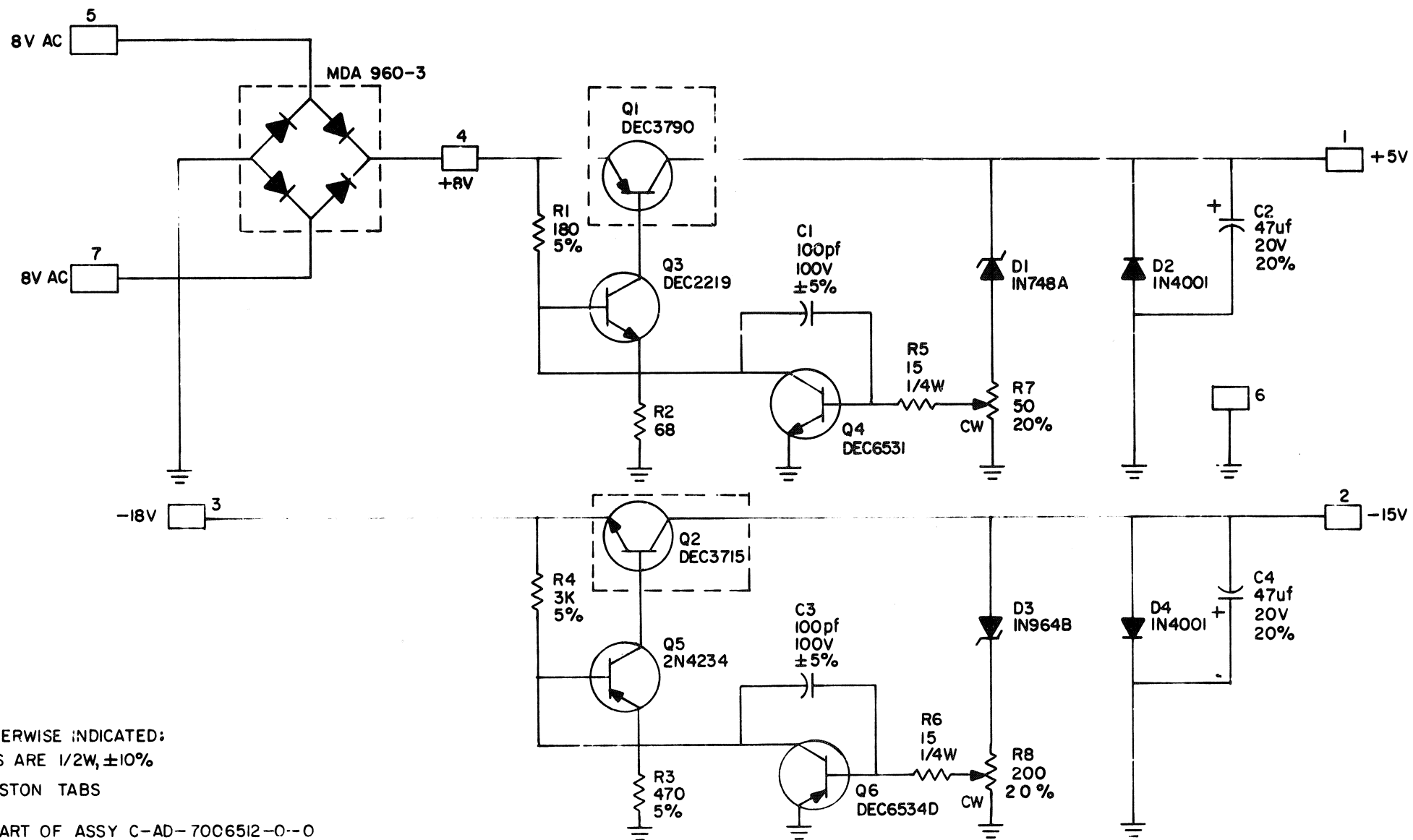
THIS SCHEMATIC IS FURNISHED ONLY FOR TEST AND MAINTENANCE PURPOSES. THE CIRCUITS ARE PROPRIETARY IN NATURE AND SHOULD BE TREATED ACCORDINGLY. COPYRIGHT 1975 BY DIGITAL EQUIPMENT CORPORATION.



UNLESS OTHERWISE INDICATED:
RESISTORS = 1/4W 5%
CAPACITORS = .01UF 100V 20%
DEC7401 = E6, E7, E11
DEC9601 = E3
DEC7404 = E8, E13, E17
DEC7475 = E1, E4
DEC7474 = E5, E15, E18
DEC7400 = E2, E9, E16, E19
DEC7410 = E10
DEC7430 = E14
DEC7440 = E12
PIN 12 = GND ON E1, E4
PIN 5 = +5V
PIN 7 = GND ON ALL OTHER IC'S
PIN 14 = +5V

REVISIONS				DATE				TRANSISTOR & DIODE CONVERSION CHART				TITLE			
1	00	00	01	1	00	00	01	DEC	EA	DEC	EA	READER CONTROL			
2	00	00	02	2	00	00	02	DEC	EA	DEC	EA	EQUIPMENT CORPORATION			
3	00	00	03	3	00	00	03	DEC	EA	DEC	EA	SER 0 CS			
4	00	00	04	4	00	00	04	DEC	EA	DEC	EA	NUMBER M7050--0-1			
5	00	00	05	5	00	00	05	DEC	EA	DEC	EA	PRINTED CIRCUIT REV			
6	00	00	06	6	00	00	06	DEC	EA	DEC	EA	REV E			

THIS SCHEMATIC IS FURNISHED ONLY FOR TEST AND MAINTENANCE PURPOSES. THE CIRCUITS ARE PROPRIETARY IN NATURE AND SHOULD BE TREATED ACCORDINGLY. COPYRIGHT 1970 BY DIGITAL EQUIPMENT CORPORATION



REVISIONS				CHK	CHG	NO	REV	
				CHK'D	DATE			
				ENG	DATE			
				PROD	DATE			

DRN NANLY MOORE				DATE 7/8/70			
CHK'D				DATE			
ENG				DATE			
PROD				DATE			

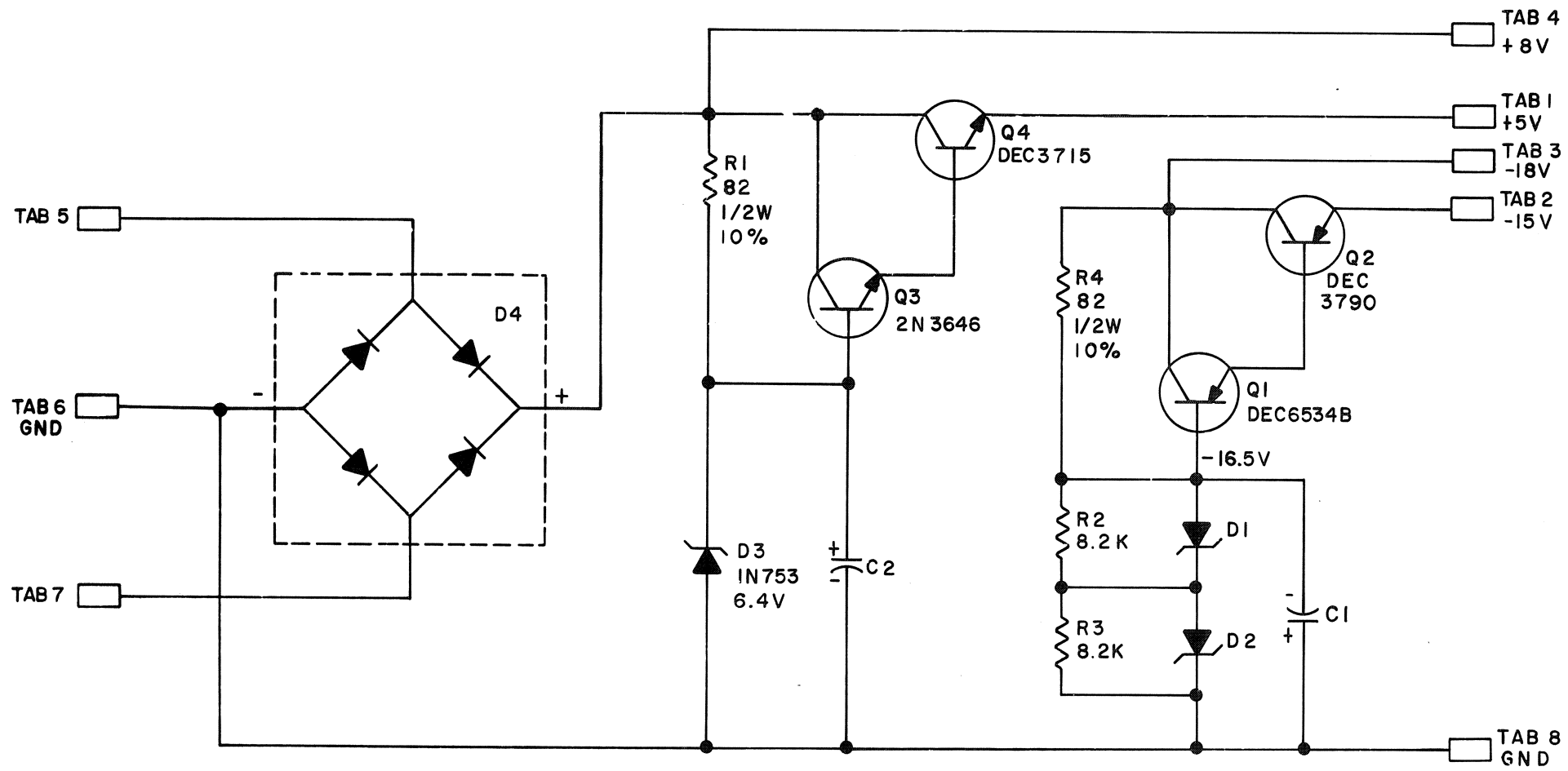
TRANSISTOR & DIODE CONVERSION CHART							
DEC		EIA		DEC		EIA	
DEC3790-2		2N3790		DEC6531		MPS6531	
DEC2219		2N2219		IN748A		SAME	
DEC3715		2N3715		IN964B		SAME	
2N4234		2N4234		IN4001		SAME	
DEC6534D		MPS6534					

digital		EQUIPMENT CORPORATION		MAYNARD, MASSACHUSETTS	
---------	--	-----------------------	--	------------------------	--

TITLE PCO REGULATOR 5408918															
SIZE B		CODE CS		NUMBER 5408918-0-1						REV A					
PRINTED CIRCUIT REV										B					

THIS SCHEMATIC IS FURNISHED ONLY FOR TEST AND MAINTENANCE PURPOSES. THE CIRCUITS ARE PROPRIETARY IN NATURE AND SHOULD BE TREATED ACCORDINGLY. COPYRIGHT 1969 BY DIGITAL EQUIPMENT CORPORATION

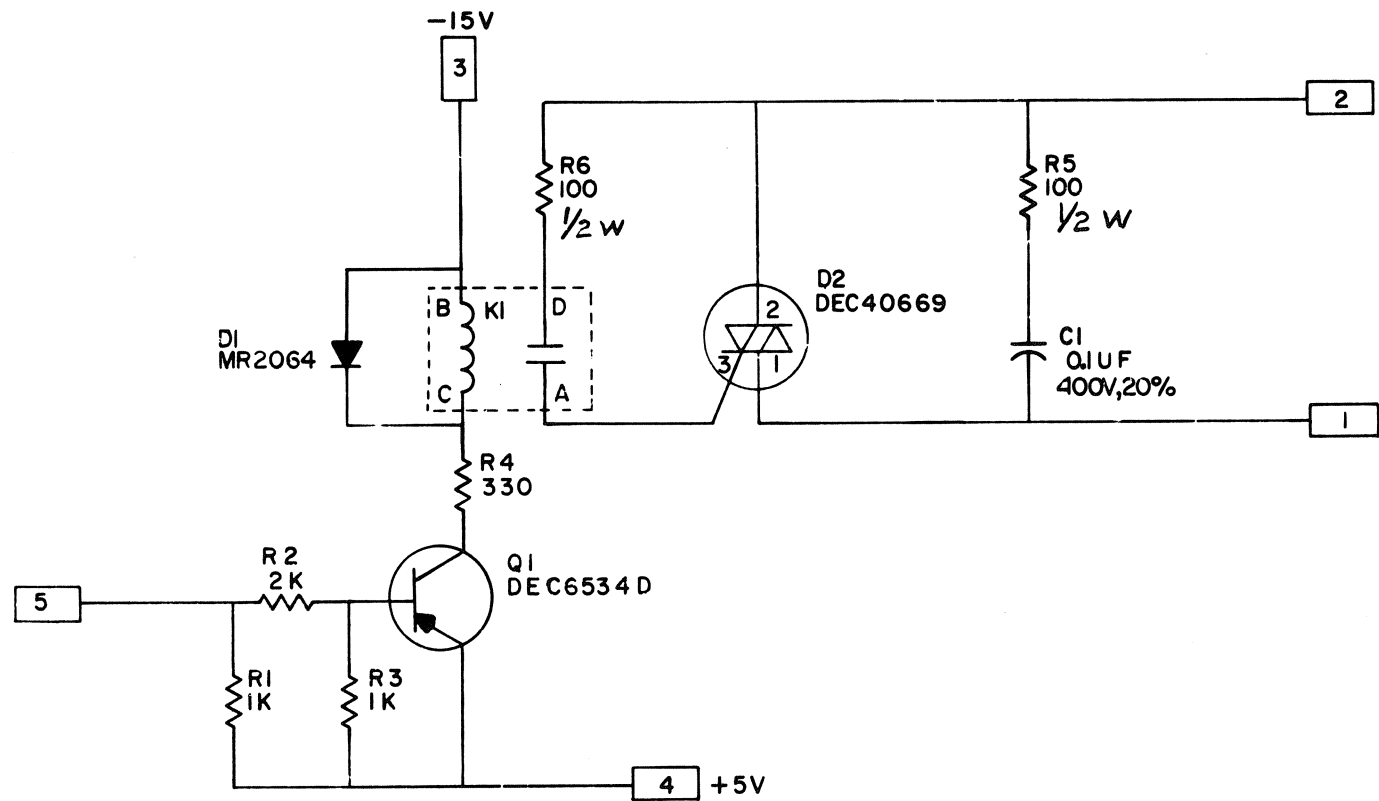
SIZE CODE B CS
NUMBER 5408308-0-1
REV C



UNLESS OTHERWISE INDICATED.
CAPACITORS ARE 6.8MFD 35V 20%
DIODES ARE IN756A, 8.2V
D4 IS MDA960-3
RESISTORS ARE 1/4W 5%
TABS ARE AMP 41290

REVISIONS CHK CHG NO. REV 00001 A 00002 B 00003 C				DRN <i>Refining</i> DATE 3-31-69		TRANSISTOR & DIODE CONVERSION CHART				digital EQUIPMENT CORPORATION MAYNARD, MASSACHUSETTS		TITLE PCO POWER SUPPLY REGULATOR 5408308			
CHK'D <i>M. Muncher</i> DATE 4-1-69				ENG. <i>Dec 11</i> DATE 2-14-69		DEC IN753 IN756A DEC3790 DEC6534B DEC3715		EIA SAME SAME 2N3790 MPS6534 NONE		DEC 2N3646 2N3009		SIZE B CODE CS NUMBER 5408308-0-1		REV C	
PROD.				DATE								PRINTED CIRCUIT REV.		D	

THIS SCHEMATIC IS FURNISHED ONLY FOR TEST AND MAINTENANCE PURPOSES. THE
 CIRCUITS ARE PROPRIETARY IN NATURE AND SHOULD BE TREATED ACCORDINGLY.
 COPYRIGHT 1969 BY DIGITAL EQUIPMENT CORPORATION



UNLESS OTHERWISE INDICATED:
 RELAY IS DEC40034
 TABS ARE AMP. # 41290
 RESISTORS ARE 1/4 W, 5%

REVISIONS CHK CHG NO REV REV 8 REDR 00001 B		DRN M. HALLER DATE 6-20-69	TRANSISTOR & DIODE CONVERSION CHART DEC EIA DEC6534D MPS6534		digital EQUIPMENT CORPORATION MAYNARD MASSACHUSETTS	TITLE TRIAC SW ASSY (PC05)	
CHK'D T.A. NALETTE DATE 6-24-69		ENG G. BECKNER DATE 11-19-69		SIZE B		CODE CS	NUMBER 5408384-0-1
PROD DATE				PRINTED CIRCUIT REV B			