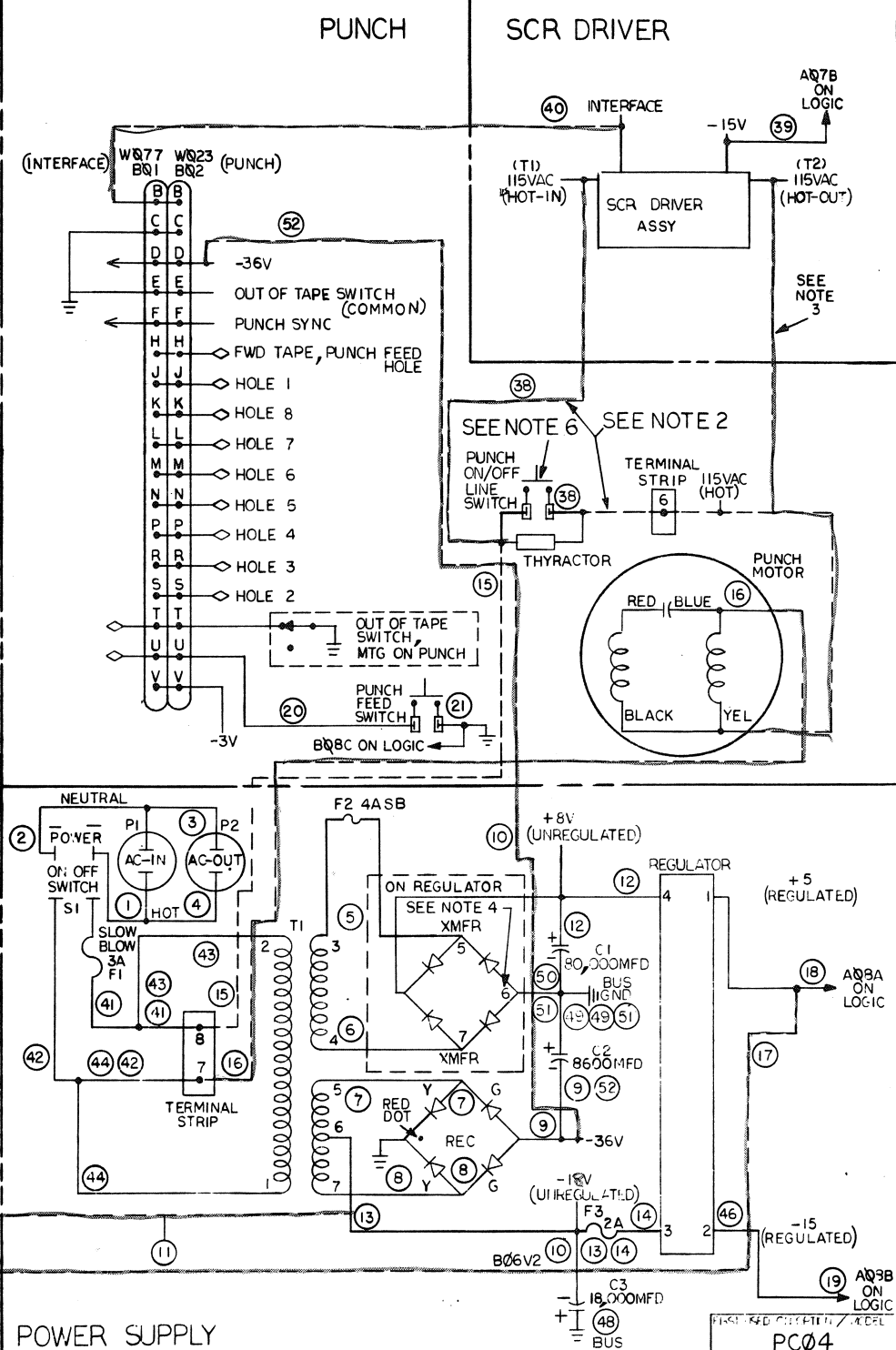
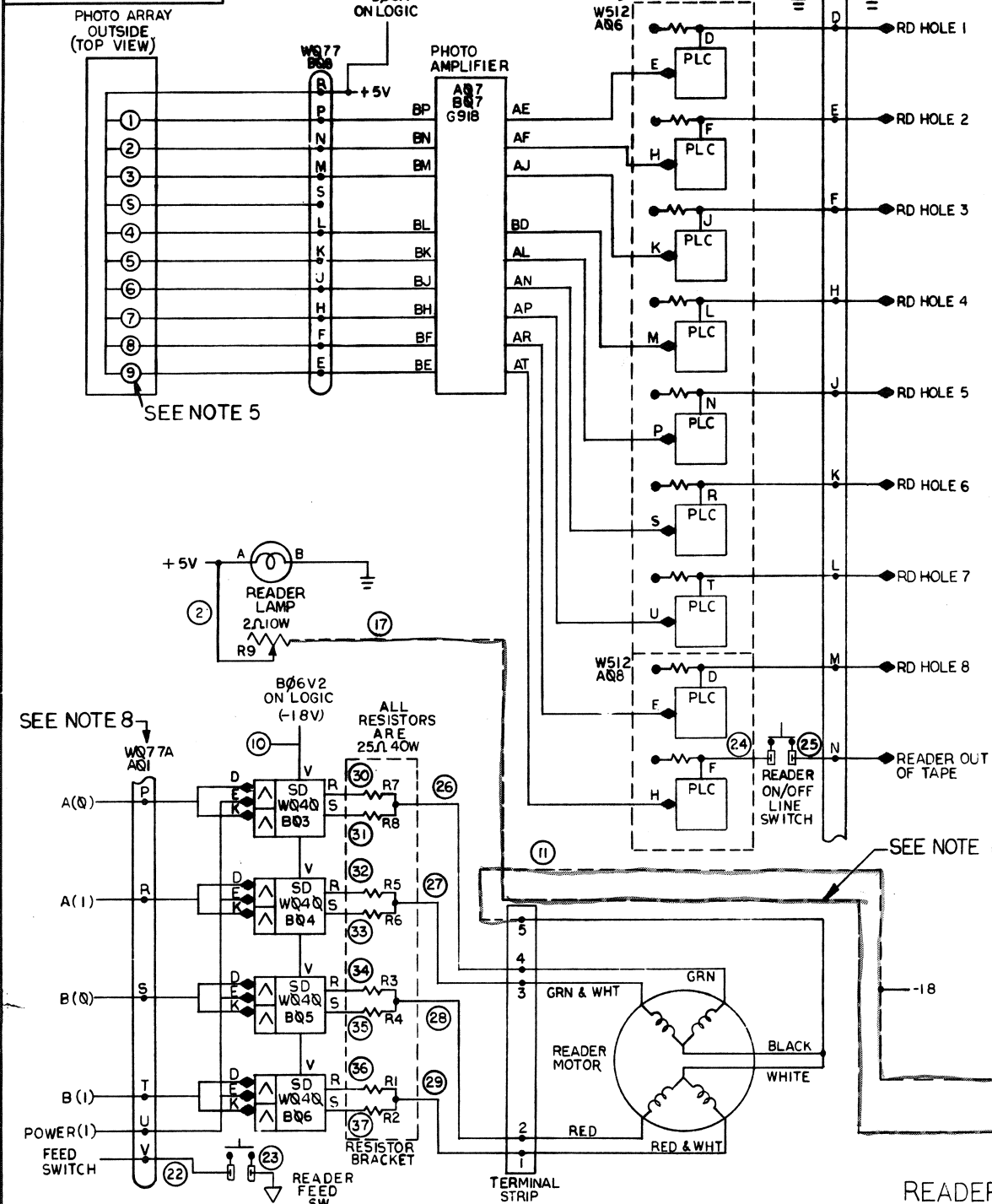


This drawing and specifications, herein, are the property of Digital Equipment Corporation and shall not be reproduced or copied or used in whole or in part as the basis for the manufacture or sale of items without written permission.

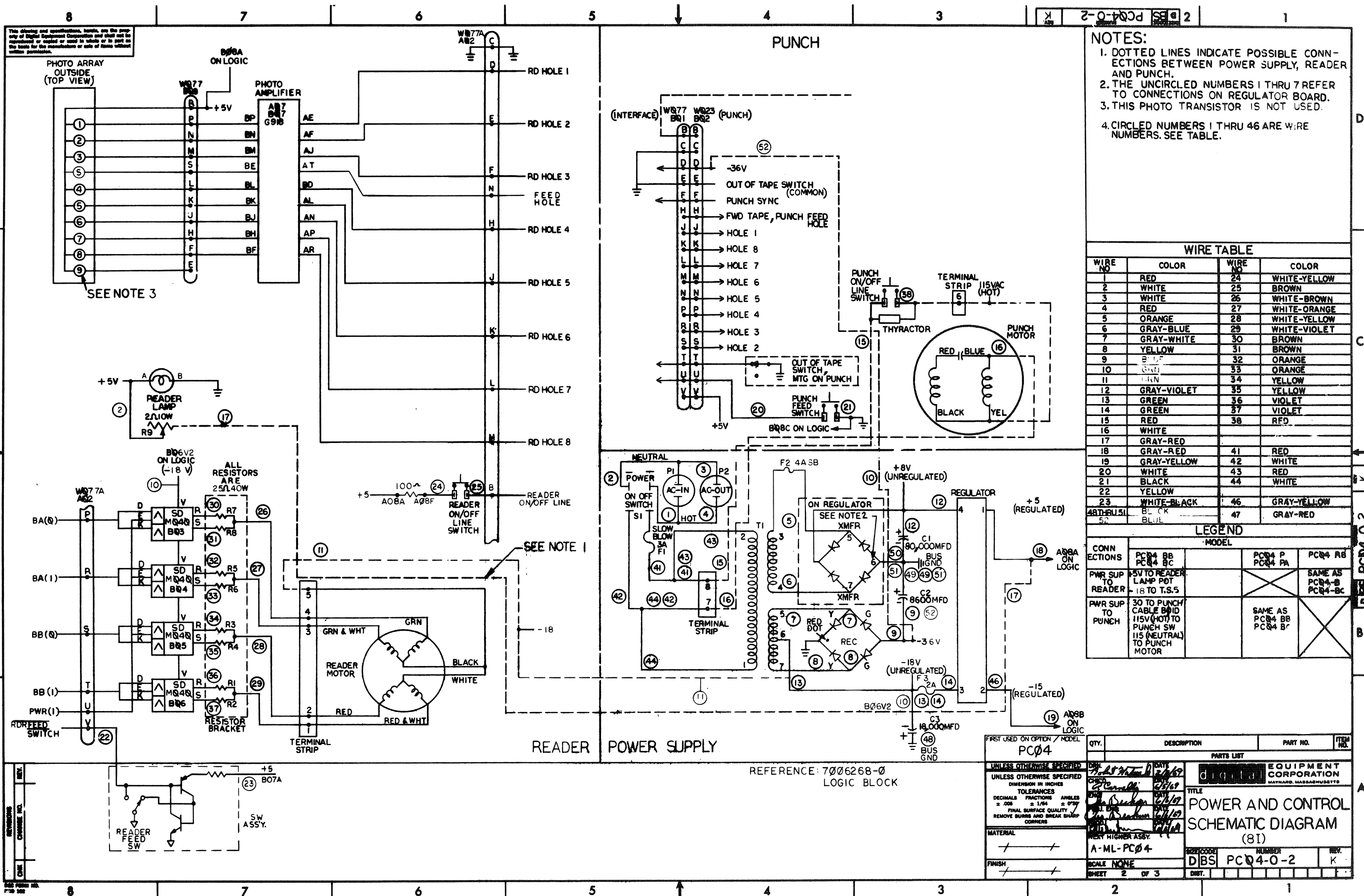


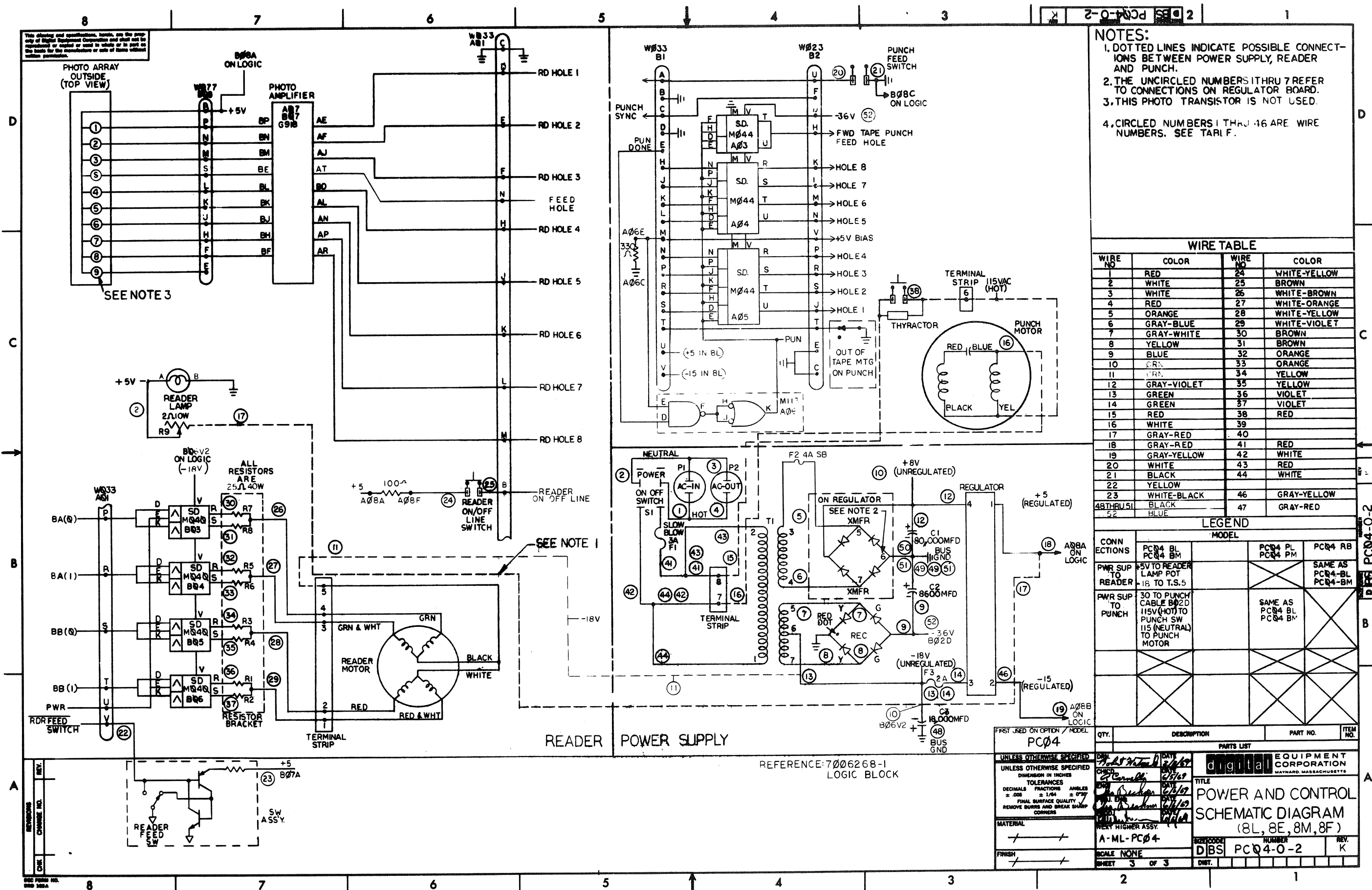
- NOTES:**
1. DOTTED LINES INDICATE POSSIBLE CONNECTIONS BETWEEN POWER SUPPLY, READER, PUNCH AND SCR DRIVER. SEE LEGEND.
 2. WIRE NO. 38 HAS TWO POSSIBLE ROUTES, DEPENDING ON THE SCR DRIVER OPTION WITH THE OPTION IT GOES TO THE SCR BOARD WITHOUT THE OPTION IT GOES TO THE TERMINAL STRIP.
 3. WITH SCR DRIVER THE BLACK-YEL COMBINATION FROM THE PUNCH MOTOR GOES TO THE SCR BD. WITHOUT DRIVER IT GOES TO THE TERMINAL STRIP.
 4. THE UNCIRCLED NUMBERS 1 THRU 7 REFER TO CONNECTIONS ON REGULATOR BOARD.
 5. THIS PHOTO TRANSISTOR USED TO DETECT OUT OF TAPE.
 6. WITH SCR OPTION SWITCHED AC WILL BE WIRED TO COMMON TERMINAL, THYRACITOR NOT REQD.
 7. CIRCLED NUMBERS 1 THRU 46 ARE WIRE NUMBERS. SEE TABLE.
 8. SEE PAGE 2 FOR MODELS BB, BC, & RB. SEE PAGE 3 FOR MODELS BL, BM, PL, & PM.

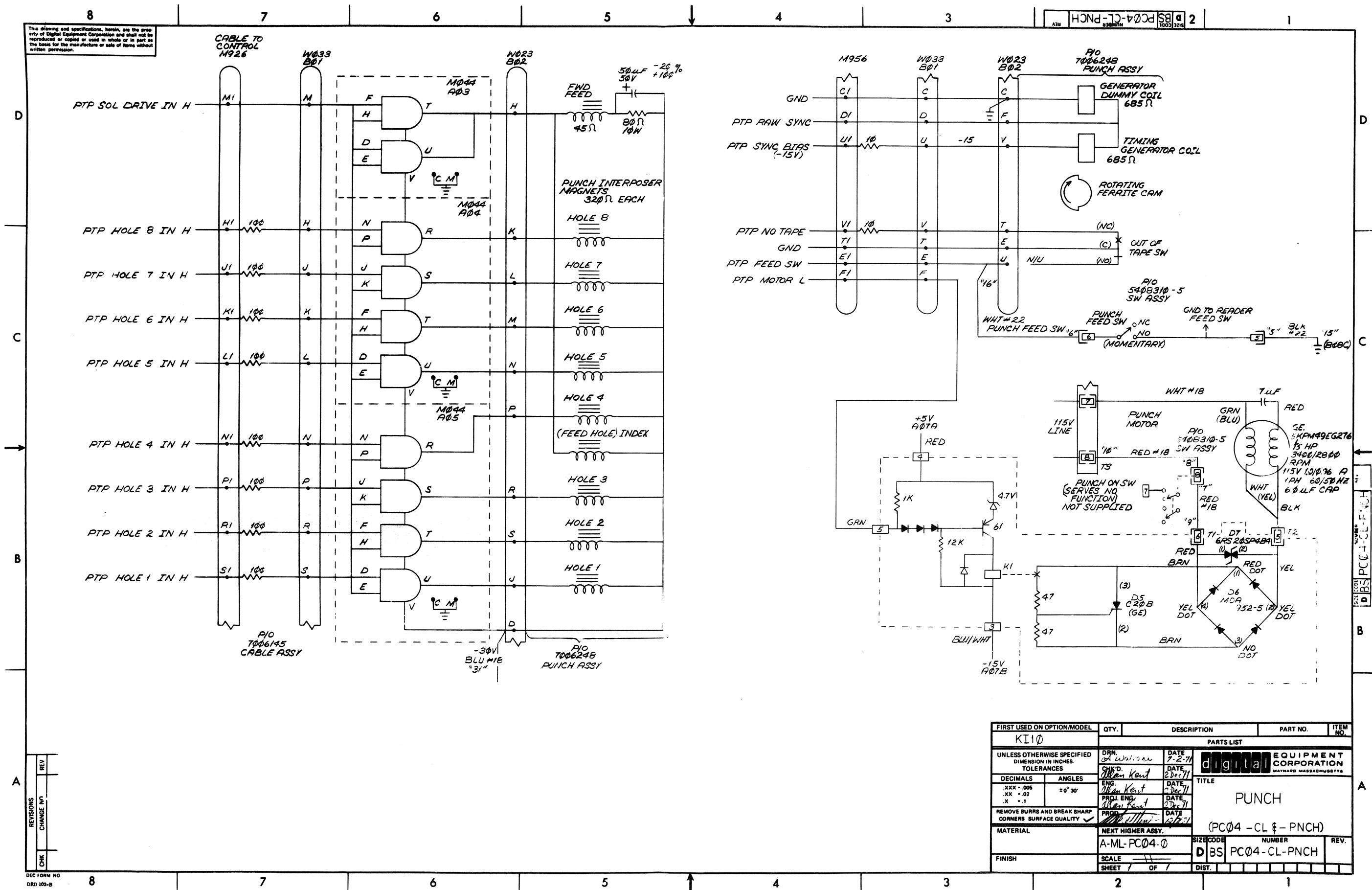
WIRE NO	COLOR	WIRE NO	COLOR
1	RED	24	WHITE-YELLOW
2	WHITE	25	BROWN
3	WHITE	26	WHITE-BROWN
4	RED	27	WHITE-ORANGE
5	ORANGE	28	WHITE-YELLOW
6	GRAY-BLUE	29	WHITE-VIOLET
7	GRAY-WHITE	30	BROWN
8	YELLOW	31	BROWN
9	BLUE	32	ORANGE
10	GRN	33	ORANGE
11	GRN	34	YELLOW
12	GRAY-VIOLET	35	YELLOW
13	GREEN	36	VIOLET
14	GREEN	37	VIOLET
15	RED	38	RED
16	WHITE	39	WHITE-BLUE
17	GRAY-RED	40	WHITE-GREEN
18	GRAY-RED	41	RED
19	GRAY-YELLOW	42	WHITE
20	WHITE	43	RED
21	BLACK	44	WHITE
22	YELLOW	45	YELLOW
23	WHITE-BLACK	46	GRAY-YELLOW
48 THRU 51	BLACK	47	GRAY-RED
52	BLUE		


CONN ECTIONS		MODEL			
		PC04 B	PC04 C	PC04 P	PC04 R
PWR SUP TO READER	+5V TO READER LAMP POT -18 TO T.S.S.	SAME AS PC04-B	SAME AS PC04-B	SAME AS PC04-B	SAME AS PC04-B
PWR SUP TO PUNCH	-30 TO PUNCH CABLE BOND -115V (HOT) TO PUNCH SW -115 (NEUTRAL) TO PUNCH MOTOR	SAME AS PC04-B	SAME AS PC04-B	SAME AS PC04-B	SAME AS PC04-B
PWR SUP TO SCR DRVR					
SCR DRVR TO PUNCH					

RETURNS			
CHK	CHANGE NO.	REV	
000	PC04-00006	A	
T Ruckel 9-11-69			
BECKER, J			
John D. Becker 7-17-62			
000	PC05-00003	B	
John M. Becker 7-16-62			
E. LUTTIG			
000	PC04-00002	C	
E. Luttig 7-17-62			
000	PC04-00001	D	
John M. Luttig 5-8-62			
C. YOUSE			
000	PC04-00000	E	
T. Ruckel 5-14-70			
ADELMAN			
G. G. Adelman 10-6-62			
000	PC04-00025	F	
G. Adelman 6-22-62			
George Adelman			
000	PC04-00046	F	
H. L. Laiter 3-10-71			
H. Laiter			
M. L. 3-17-71			
000	PC04-00055	H	
H. Laiter 4-19-72			
C. YOUSE			
000	PC04-00058	J	
J. Williams 1-16-73			
WILLIAMS			
G. Williams 10-19-73			
000	PC04-00080	K	
G. Williams 1-22-75			
E. NEAL			
000	PC04-00080	L	







FIRST USED ON OPTION/MODEL		QTY.	DESCRIPTION	PART NO.	ITEM NO.
PC04-0		PARTS LIST			
UNLESS OTHERWISE SPECIFIED DIMENSION IN INCHES. TOLERANCES		DRN. P. MARCOTTI	DATE 6-6-69	 EQUIPMENT CORPORATION MAYNARD, MASSACHUSETTS	
DECIMALS ANGLES		CHK'D. R. CARVER	DATE 6-6-69		
XXX - .005	± 0° 30'	ENG. G. BECKNER	DATE 6-6-69	TITLE MODULE UTILIZATION LIST PC04	
.XX - .02		PROJ. ENG. G. BECKNER	DATE 6-6-69		
.X - .1		PROD. R. RANTONUCCIO	DATE 6-6-69		
REMOVE BURRS AND BREAK SHARP CORNERS. SURFACE QUALITY ✓					
MATERIAL		NEXT HIGHER ASSY.			
✂ ✂		A-ML-PC04			
FINISH		SCALE ✂ ✂		SIZE CODE	
✂ ✂		SHEET 1 OF 1		DMU	
				NUMBER	
				PC04-0-3	
				REV.	
				D	

CONTINUATION SHEET					
TITLE PC#4 Engineering Specification					
TABLE 1-1 PC#4 Configuration					
CONFIGURATION	REFERENCE BLOCK SCHEMATICS	PUNCH MODULES	INTERFACE CABLES	READER MODULES	APPLICABLE COMPUTERS
PC#4P	D/BS/PC#4-0-2 Page 1 of 3	None	1-W077A	N/A	PDP8; PDP8/S; PDP8/I
PC#4PL	D/BS/PC#4-0-2 Page 3 of 3	3-M044	1-W033A	N/A	PDP8/L; PDP8E
PC#4R	D/BS/PC#4-0-2 Page 1 of 3	N/A	1-W077A	1-G918 4-W040 2-W512	PDP8; PDP8/S
PC#4RB	D/BS/PC#4-0-2 Pages 2 and 3 of 3	N/A	1-W077A	1-G918 4-M040	PDP8/I; PDP8/L PDP8/E
PC#4B	D/BS/PC#4-0-2 Page 1 of 3	None	2-W077A	1-G918 4-W040 2-W512	PDP8; PDP8/S
PC#4BB	D/BS/PC#4-0-2 Page 2 of 3	None	2-W077A	1-G918 4-M040	PDP8/I
PC#4BL	D/BS/PC#4-0-2 Page 3 of 3	3-M044	2-W033C	1-G918 4-M040	PDP8/L PDP8/E
PC#4C	D/BS/PC#4-0-2 Page 1 of 3	None	2-W077A	1-G918 4-W040 2-W512	PDP9; PDP10
				SIZE CODE A	NUMBER PCO-0-4
				REV A	SHEET 5 OF 7
DEC FORM NO DRA 108A					

CONTINUATION SHEET					
TITLE PC#4 Engineering Specification - Test Procedure for Reader					
B. -15 volts on A#8B and B#8B (±1 volts).					
C. -30 volts on B#6V and B#2D (-32 to -40 volts).					
3. Shut power off and insert modules for PC#4.					
4. Apply power and make same check as in 2.					
5. Put cap. (6.8uf, 10-5306) between pins A#3A (+) and A#3C (-) and between pins B#3C (+) and B#3B (-).					
				SIZE CODE A	NUMBER PCO4-U-4
				REV A	SHEET 7 OF 7
DEC FORM NO 16-1022 DRA 108					

CONTINUATION SHEET

TITLE PC#4 Engineering Specification - Test Procedure for reader

1. Do not apply power until the following checks are made.

a. Logic block empty.

b. A#1A, A#2A, A#1B, A#2B, B#1A, and B#2A are bare (no wiring or bussing).

c. B#1B and B#2B should be bussed together without any wires on them except for the PC#4C configuration when a white/green wire will be on B#1B.

d. Remove reader lamp.

e. Check caps for proper polarity in wiring.

f. Put ohmmeter on X100 scale and check regulator board tabs 1 thru 5 and 7 for lack of short to ground. Tabs 6 and 8 should indicate a short to ground.

g. Check fuses for proper rating. Also, should be slo/blo.

h. Check for continuity between reader lamp ground slot and chassis ground.

i. Check the following wires for proper connection.

Color	Location	Color	Location
+black (str)	B#8C	*wh/blue	A#7B
#wh/black (str)	B#7C	*wh/green	B#1B
#brown (str)	A#2B A#1B	#brown (solid)	B#3R, S
#yellow (str)	A#1V	#orange (solid)	B#4R, S
#wh/yellow (str)	A#8F	#yellow (solid)	B#5R, S
+white (str)	B#1U	#violet (solid)	B#6R, S
grey/red (str)	A#8A	+punch configurations	
grey/yellow (str)	A#8B	*only on PC#4C configuration	
blue (str)	B#6V	+reader configurations	

j. Put reader lamp back in position making sure that the tension on the lamp is sufficient for good contact.

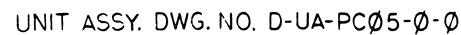
2. Apply AC power to the unit and check.

a. +5 volts on A#8A and B#8A (+5 volts \pm .25 volts).

DEC FORM NO DRA 108A	SIZE CODE A	NUMBER PCO4-U-4	REV A	SHEET 6 OF 7
-------------------------	----------------	--------------------	----------	--------------

NOTES:

- I THE KEY TO SYMBOLS IN THE FIND NO. COLUMNS IN FIND BLOCK 1 IS:
- AN "X" MEANS THE ASSY IS USED.
- A BLANK SPACE MEANS THE ASSY. IS NOT USED.
- A DASH AND NUMBER (-1-2 ETC) MEANS THE ASSY. IS USED AND THAT VARIATION OF THE ASSY. HAVING THAT PARTICULAR DASH NUMBER AS PART OF ITS DWG. NUMBER IS USED
- EXAMPLE:
- A READER MODEL FROM FIND COLUMN 14 USES A (-3) OR A D-AD7006252-3-0 COVER ASSY.



FIRST USED ON OPTION/MODEL
PC05

QTY.	DESCRIPTION	PART NO.	ITEM NO.
PARTS LIST			
DATE 7/27/66	DATE 7/27/66	digital EQUIPMENT CORPORATION MAYNARD, MASSACHUSETTS	
CH'D. C. Cassidy	DATE 7/27/66	TITLE	
CHK'D. J. Cassidy	DATE 7/27/66	DRAWING INDEX	
DATE 7/27/66	DATE 7/27/66	LIST PC05	
NEXT HIGHER ASSY			
A-ML-FC05-0			
SCALE 1" = 2"	SIZE CODE D DI	NUMBER FC05-0-1	REV Z
SHEET 1 OF 2	DIST. IS		

