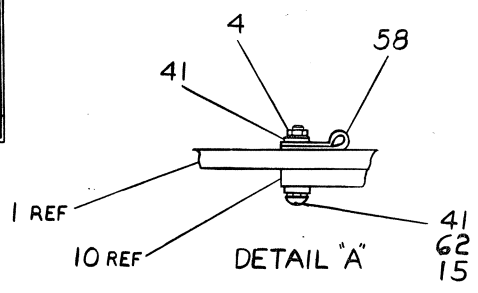
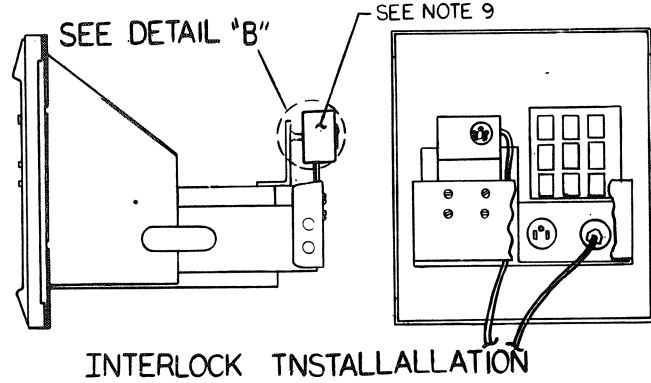
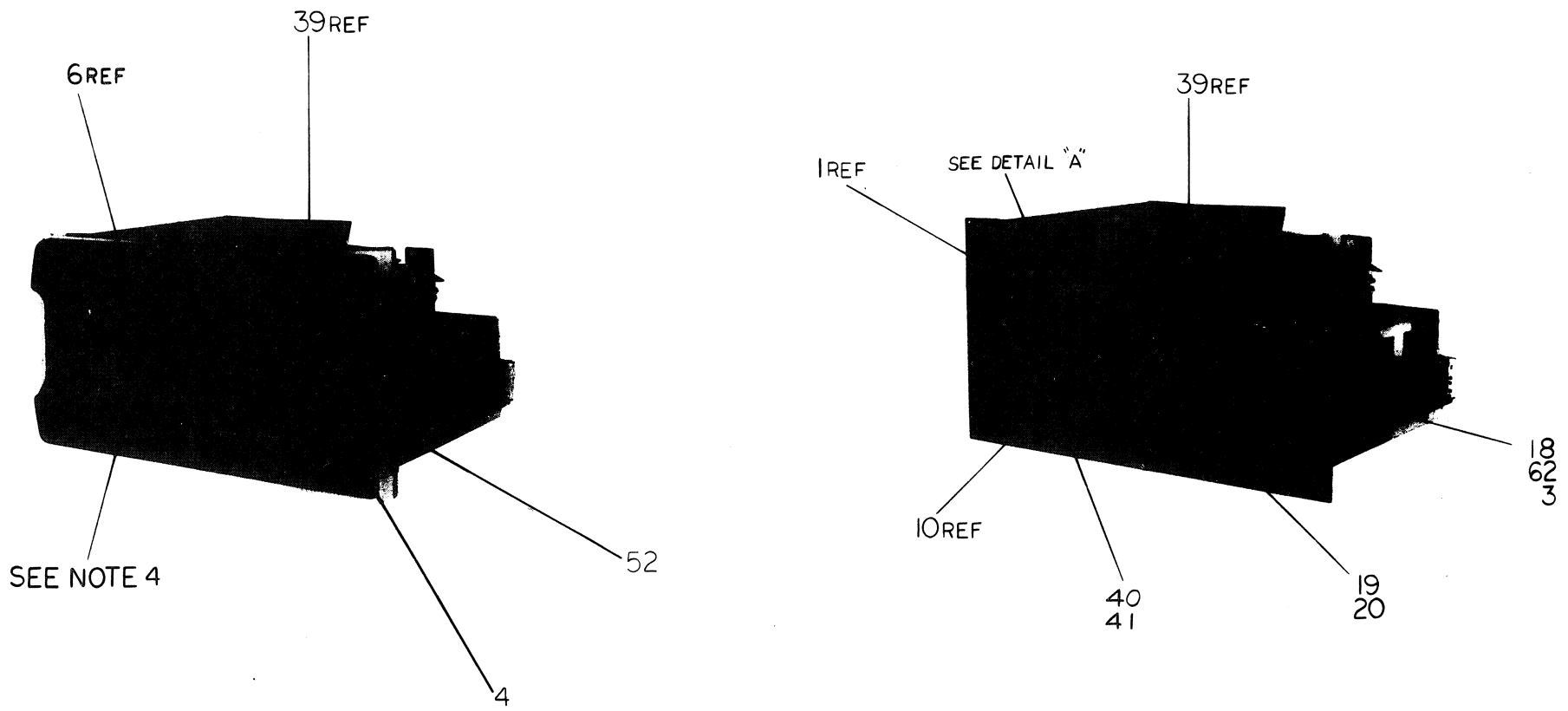


This drawing and specifications, herein, are the property of Digital Equipment Corporation and shall not be reproduced or copied or used in whole or in part as the basis for the manufacture or sale of items without written permission.



LEGEND		
MODEL	CY	VARIATION
PC05-C	60	READER PUNCH & DRIVER
PC05-CA	50	READER PUNCH & DRIVER
PC05-P	60	PUNCH
PC05-PA	50	PUNCH
PC05-R	X	READER

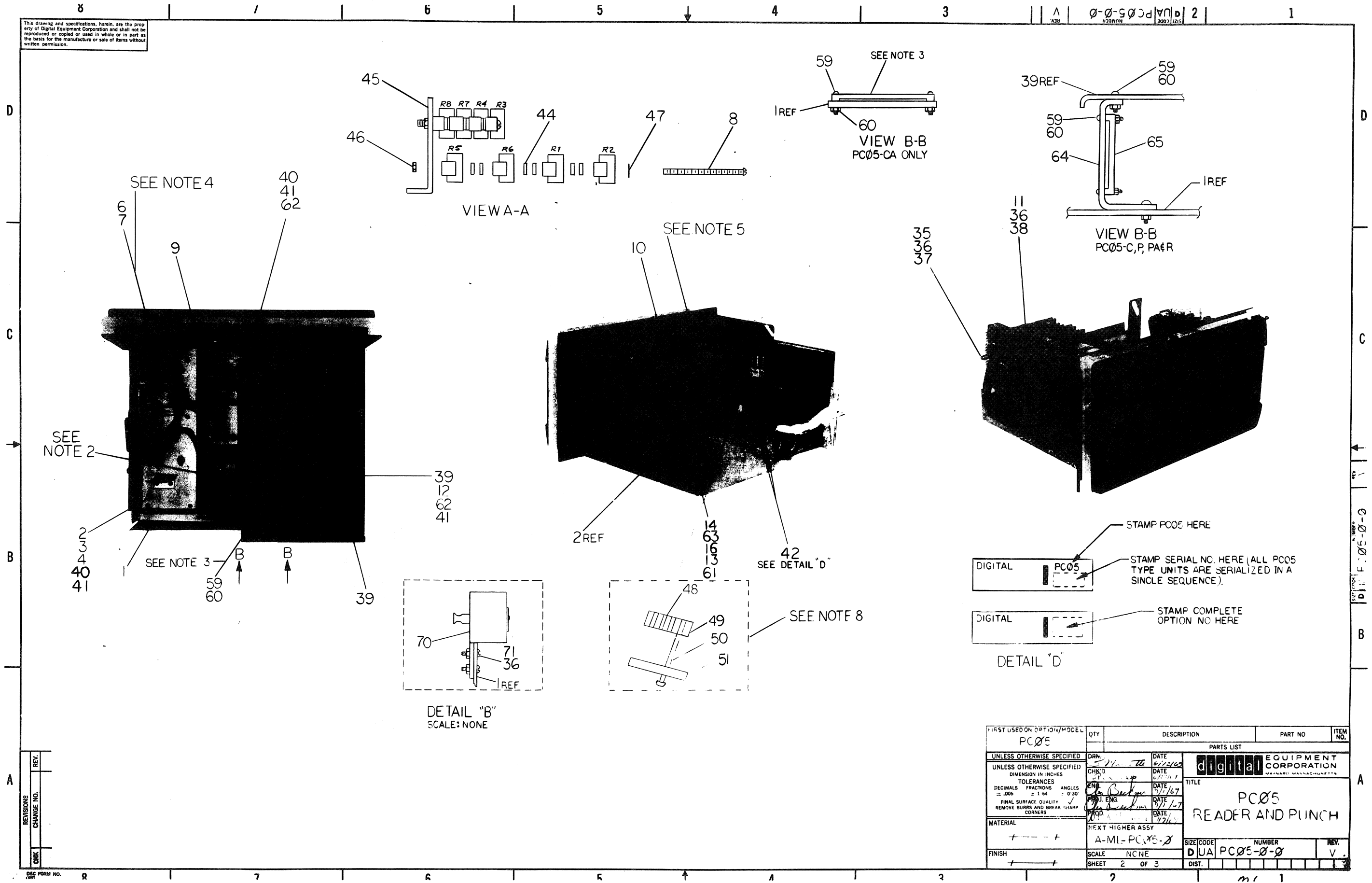
- NOTES:
1. WIRING OF SWITCHES VARIES DEPENDING ON UNIT MODEL BEING BUILT. FOR SWITCH CONFIGURATION, FOR WIRING PURPOSES SEE DETAIL "A" FOR MODEL "C" AND "CA", DETAIL "B" FOR MODEL "P" AND "PA", AND DETAIL "C" FOR MODEL "R". 50 60 CY HAS NO EFFECT.
 2. IF THE TRIAC DRIVER UNIT IS USED, THIS WIRE WILL CONNECT TO TRIAC DRIVER TERMINAL T1. IF THE UNIT IS NOT USED, THIS WIRE WILL CONNECT TO TS-6 AND END. FOR CORRECT WIRING WHEN THE UNIT IS USED, SEE TRIAC DRIVER WIRE LIST. (SHEET 3).
 3. PLACE CABLE IN POSITION. INSTALL CLAMP OVER CABLE.
 4. COVER ASSY TO BE ATTACHED TO CHASSIS ASSY AFTER ALL OTHER INSTALLATIONS ARE COMPLETE. TO DO SO, READER KNOB MUST BE REMOVED, COVER INSTALLED, THEN KNOB REPLACED ON READER SHAFT.
 5. ON MODELS "P" AND "PA" THIS WIRE WILL BE TIED BACK AND WHITE SHRINKABLE TUBING (ITEM 43) ADDED AS REQD.
 6. FOR REFERENCE SEE DRAWING INDEX D-DI-PC05-0-1
 7. ON MODELS PC05-C, CA, P, & PA THESE WIRES WILL BE BUSSED TOGETHER AT COMMON TERMINAL ON SWITCH PANEL. ON "R" MODEL THESE WIRES WILL BE CONNECTED AS USUAL TO THEIR APPROPRIATE TERMINALS.
 8. MODULE HOLD DOWN BAR TO BE INSTALLED BEFORE SHIPPING MACHINE.
 9. ATTACH POWER INTERLOCK TO REAR OF STATIONARY SECTION OF CHASSIS TRACKS. INSERT CORD FROM POWER INTERLOCK INTO JACK (H1) IN THE REAR OF THE PC05. SYSTEM POWER SHALL BE SUPPLIED TO POWER INTERLOCK.



EXTENSION	CHANGE NO.	REV.
PC05-00002	A	
G. BECKNER		
PC05-00004	B	
J. Beckner		
PC05-00007	C	
T. Beckner		
PC05-00014	D	
T. Beckner		
PC05-00021	E	
T. Beckner		
PC05-00027	F	
T. Beckner		
PC05-00028	G	
T. Beckner		
PC05-00029	H	
T. Beckner		
PC05-00030	I	
T. Beckner		
PC05-00031	J	
T. Beckner		
PC05-00032	K	
T. Beckner		
PC05-00033	L	
T. Beckner		
PC05-00034	M	
T. Beckner		
PC05-00035	N	
T. Beckner		
PC05-00036	O	
T. Beckner		
PC05-00037	P	
T. Beckner		
PC05-00038	Q	
T. Beckner		
PC05-00039	R	
T. Beckner		
PC05-00040	S	
T. Beckner		
PC05-00041	T	
T. Beckner		
PC05-00042	U	
T. Beckner		
PC05-00043	V	
T. Beckner		
PC05-00044	W	
T. Beckner		
PC05-00045	X	
T. Beckner		
PC05-00046	Y	
T. Beckner		
PC05-00047	Z	
T. Beckner		

FIR. T. USED ON OPTION / MODEL		PC05	
UNLESS OTHERWISE SPECIFIED		UNLESS OTHERWISE SPECIFIED	
DIMENSION IN INCHES		TOLERANCES	
DECIMALS FRACTIONS ANGLES		± .005 ± 1/64 ± 0°30'	
FINAL SURFACE QUALITY		REMOVE BURRS AND BREAK SHARP CC. NERS	
MATERIAL		NEXT HIGHER ASSY	
FINISH		A-M-L-PC05-0	
SCALE		NONE	
SHEET		1 OF 3	
QTY.		DESCRIPTION	
PARTS LIST		PART NO.	
ITEM NO.		REV.	
DATE		DATE	
CHKD.		DATE	
ENG.		DATE	
PROD. ENGR.		DATE	
PROD.		DATE	
TITLE		PC05	
READER AND PUNCH		SIZE CODE	
DUA PC05-0-0		NUMBER	
DIST.		REV.	
V			

This drawing and specifications, herein, are the property of Digital Equipment Corporation and shall not be reproduced or copied or used in whole or in part as the basis for the manufacture or sale of items without written permission.



STAMP PC05 HERE


STAMP SERIAL NO. HERE (ALL PC05 TYPE UNITS ARE SERIALIZED IN A SINGLE SEQUENCE).

STAMP COMPLETE OPTION NO HERE

DETAIL 'D'

FIRST USED ON OPTION/MODEL PC05		QTY	DESCRIPTION	PART NO	ITEM NO.
UNLESS OTHERWISE SPECIFIED DIMENSION IN INCHES TOLERANCES DECIMALS FRACTIONS ANGLES ±.005 ±.001 ±.030 FINAL SURFACE QUALITY REMOVE BURRS AND BREAK SHARP CORNERS		DRN DATE CHKD DATE ENL DATE PROJ. ENG. DATE PROD DATE	PARTS LIST digital EQUIPMENT CORPORATION TITLE PC05 READER AND PUNCH SIZE CODE DUA NUMBER PC05-0-0 REV. V.		
MATERIAL FINISH		NEXT HIGHER ASSY A-MI-PC05-0		SCALE NCNE SHEET 2 OF 3	

LEC FORM NO
DRD 100


 READER LAMP

*THIS END CONNECTS TO CAPACITOR ON PUNCH CHASSIS, ON
TERMINAL WITH BLUE WIRE ATTACHED

* FOR RESISTOR CONFIGURATION SEE VIEW A-A
SHEET 2

EXTERNAL COMPONENT TABLE						
ITEM	COMP	POL	FROM	TO	POL	REMARKS
66	CAP	+	A03A2	A01C2	-	
66	CAP	+	B01C2	B03B2	-	
67	CAP	+	A05J1	A05C2	-	
68	RES		B09H1	B09A2		
68	RES		B10D1	B10A2		
69	RES		A11T1	A11A2		

FIRST USED ON OPTION / MODEL PCØ5		QTY.	DESCRIPTION		PART NO.		ITEM NO.
UNLESS OTHERWISE SPECIFIED		DRAWN		DATE	<div style="border: 1px solid black; padding: 5px; display: inline-block;"> digital EQUIPMENT CORPORATION MATNARD, MASSACHUSETTS </div>		
WITHOUT OTHERWISE SPECIFIED DIMENSION IN INCHES		CHD		DATE			
TOLERANCES		PCØ5		DATE	<div style="border: 1px solid black; padding: 10px; text-align: center;"> <h1>PCØ5</h1> <h2>READER AND PUNCH</h2> </div>		
DECIMALS FRACTIONS ANGLES		PCØ5		DATE			
± .005 ± 1/64 ± 1°		PCØ5		DATE			
FINAL SURFACE QUALITY REMOVE BURRS AND BREAK SHARP CORNERS		PCØ5		DATE			
MATERIAL		NEXT HIGHER ASSY		SIZE CODE		NUMBER	REV
		A ML-PCØ5-Ø		DUA		PCØ5-Ø-Ø	V
FINISH		SCALE NONE		DIST.			
		SHEET 3 OF 3					

DIGITAL EQUIPMENT CORPORATION MAYNARD, MASSACHUSETTS				QUANTITY / VARIATION													
PARTS LIST																	
MADE BY P. MARCOTTE		CHECKED R. CARVELLI		SECTION													
DATE 6/19/69		DATE 6/24/69		1													
ENG		PROD		ISSUED SECT.													
DATE 7/1/69		DATE 7/2/69		1													
ITEM NO.	DWG NO. / PART NO.	DESCRIPTION		PC05-C	PC05-CA	PC05-P	PC05-PA	PC05-R									
1	D-AD-7006246-0-0	CHASSIS AND POWER SUPPLY ASSY		1	1	1	1	1									
2	D-AD-7006248-1-0	PUNCH ASSY (60 CY)		1	1												
2	D-AD-7006248-2-0	PUNCH ASSY (50 CY)			1	1											
3	9006021-1	SCR, PHL PAN HD 6-32 x 5/16 LG SST		5	5	5	5	3									
4	9006560	NUT, KEPS 6-32		5	5	4	4	3									
5	9006070-1	SCR, PHL PAN HD 10-32 x 5/16 LG SST		2	2	2	2	2									
6	D-AD-7006252-5-0	COVER ASSY (PUNCH)				1	1										
6	D-AD-7006252-3-0	COVER ASSY (READER)						1									
6	D-AD-7006252-4-0	COVER ASSY (COMB)		1	1												
7	9006042-2	SCR, PHL PH 8-32 x 1 LG SST		4	4	4	4	4									
8	9006083-1	SCR, PHL PAN HD 10-32 x 2-1/2 LG SST		4	4			4									
9	C-MD-7405300-0-0	CHAD BOX		1	1	1	1										
10	D-UA-7006247-0-0	READER ASSY		1	1			1									
11	C-AD-7006253-0-0	BUS BAR PC05		1	1	1	1	1									
12	9006022-1	SCR, PHL PAN HD 6-32 x 3/8 LG SST		3	3	3	3	3									
13	9006633	WASHER, INT TOOTH #6		2	2												
14	C-AD-7006520-0-0	TRIAC DRIVER ASSY		1	1	1	1										
15	9006026-1	SCR, PHL PAN HD 6/32 x 3/4 LG SST		1	1												
16	9006801	SPACER 1/2 AF x 3/8 LG #6 HOLE		2	2												
17	D-UA-PC05-0-0	PC05-0-0		2	2	2	2	2									
18	C-AD-5408310-1-0	SWITCH ASSY				1	1										
18	C-AD-5408935-0-0	SWITCH ASSY						1									
TITLE		PC05 READER, PUNCH, DRIVER		ASSY NO.		D-UA-PC05-0-0		SIZE CODE		NUMBER		PC05-0-0		REV.		ECO NO.	
				SHEET 1		OF 4		DIST. G						V		PC05-00031	
DEC FORM NO. RA 110																	

DIGITAL EQUIPMENT CORPORATION MAYNARD, MASSACHUSETTS				QUANTITY / VARIATION													
PARTS LIST																	
MADE BY P. MARCOTTE		CHECKED R. CARVELLI		SECTION													
DATE 6/19/69		DATE 6/24/69		1													
ENG		PROD		ISSUED SECT.													
DATE 7/1/69		DATE 7/2/69		1													
ITEM NO.	DWG NO. / PART NO.	DESCRIPTION		PC05-C	PC05-CA	PC05-P	PC05-PA	PC05-R									
18	C-AD-5408310-3-0	SWITCH ASSY		1	1												
19	D-MD-7407131-0-0	TAPE CONTAINER		1	1	1	1										
20	9006011-2	SCR, PHL PH 4-40 x 3/8 LG SST		2	2	2	2										
21	9006556	NUT, HEX 4-40		2	2	2	2	2									
22	9006632	WASHER, INT TOOTH #4		2	2	2	2	2									
23	9006635	WASHER, INT TOOTH #10		2	2	2	2	2									
24	1309896	RES, 25 OHM 40W ± 5%		8	8			8									
25	9107350-99	18 AWG STRD TEFLON WHT		A	RA	RA	RA	RA									
26	9007917	GOLDENBEG CONN		6	6	6	6	6									
27	9107400-97	22 AWG STRD TEFLON TRACER WHT/VIO		A	RA	RA	RA	RA									
28	9107400-94	22 AWG STRD TEFLON TRACER WHT/YEL		A	RA	RA	RA	RA									
29	9107400-93	22 AWG STRD TEFLON TRACER WHT/ORN		A	RA	RA	RA	RA									
30	9107400-91	22 AWG STRD TEFLON TRACER WHT/BRN		A	RA	RA	RA	RA									
31	9107350-77	24 AWG SOLID KYNAR VIO		A	RA	RA	RA	RA									
32	9107350-44	24 AWG SOLID KYNAR YEL		A	RA	RA	RA	RA									
33	9107350-33	24 AWG SOLID KYNAR ORN		A	RA	RA	RA	RA									
34	9107350-11	24 AWG SOLID KYNAR BRN		A	RA	RA	RA	RA									
35	9006005-01	SCR, PHL PAN HD 8-32 x 1/8 LG SST		1	1	1	1	1									
36	9006634	WASHER INT TOOTH #8		4	4	4	4	4									
37	9006823	SPACER 3/8 AF x 3/4 LG		1	1	1	1	1									
38	9009540-01	SCR, PHL PAN HD 8-32 x 5/16 LG SST		1	1	1	1	1									
39	E-IA-7407438-0-0	POWER SUPPLY COVER		1	1	1	1	1									
TITLE		PC05 READER, PUNCH, DRIVER		ASSY NO.		D-UA-PC05-0-0		SIZE CODE		NUMBER		PC05-0-0		REV.		ECO NO.	
				SHEET 2		OF 4		DIST. G						V		PC05-00031	
DEC FORM NO. DRA 110																	

DIGITAL EQUIPMENT CORPORATION MAYNARD, MASSACHUSETTS				QUANTITY / VARIATION													
PARTS LIST																	
MADE BY P. MARCOTTE		CHECKED R. CARVELLI		SECTION													
DATE 6/19/69		DATE 6/24/69		1													
ENG		PROD		ISSUED SECT.													
DATE 7/1/69		DATE 7/2/69		1													
ITEM NO.	DWG NO. / PART NO.	DESCRIPTION		PC05-C	PC05-CA	PC05-P	PC05-PA	PC05-R									
40	9006024-1	SCR, PHL PAN HD 6-32 x 1/2 LG SST		7	7	4	4	5									
41	9006653	WASHER, FLAT #6 SST		5	5	2	2	5									
42	9008141	DEC NAME TAG		2	2	2	2	2									
43	9107252-09	WHITE SHRINKABLE TUBING					A	RA									
44	9006664	WASHER #10 SST		24	24			24									
45	G-MD-7408091-0-0	BRKT, RESISTOR		1	1			1									
46	9006565	NUT, KEP 10-32 SST		4	4	4	4	4									
47	9006655	WASHER INT TOOTH #10		4	4	4	4	4									
48	9007799-6	SCR, PHL, FILLISTER HD 8-32X 1 1/2		1	1	1	1	1									
49	1209850	UNIVERSAL RETAINER		1	1	1	1	1									
50	C-IA-7405642-0-0	SCR MODULE RETAINER		1	1	1	1	1									
51	C-IA-7408339-7-0	HOLD DOWN BAR 6"		1	1	1	1	1									
52	C-IA-7407134-3-0	BEZEL SWITCH						1									
52	C-IA-7407134-4-0	BEZEL SWITCH		1	1												
52	C-IA-7407134-5-0	BEZEL SWITCH				1	1										
53	9006658	NUT, HEX 8-32 SST		2	2	2	2	2									
54	9006633	WASHER INT TOOTH LOCK #6		2	2	2	2	2									
55	9006636	WASHER FLAT		2	2	2	2	2									
56	A-PI-3700024-0-0	PACKAGING INSTRUCTIONS		1	1	1	1	1									
57	A-PI-3700123-0-0	PACKAGING INSTRUCTIONS		1	1	1	1	1									
58	9007079	CLAMP, CABLE		1	1			1									
TITLE		PC05 READER, PUNCH, DRIVER		ASSY NO.		D-UA-PC05-0-0		SIZE CODE		NUMBER		PC05-0-0		REV.		ECO NO.	
				SHEET 3		OF 4		DIST. G						V		PC05-00031	
DEC FORM NO. DRA 110																	

DIGITAL EQUIPMENT CORPORATION MAYNARD, MASSACHUSETTS				QUANTITY / VARIATION													
PARTS LIST																	
MADE BY P. MARCOTTE		CHECKED R. CARVELLI		SECTION													
DATE 6/19/69		DATE 6/24/69		1													
ENG		PROD		ISSUED SECT.													
DATE 7/1/69		DATE 7/7/69		1													
ITEM NO.	DWG NO. / PART NO.	DESCRIPTION		PC05-C	PC05-CA	PC05-P	PC05-PA	PC05-R									
59	9006013-01	SCR, PHL PAN HD. #4-40 X 1/2 LG		4	2	4	4	4									
60	9006557	NUT, KEPS #4		4	2	4	4	4									
61	9007622	GROMMET, CATERPILLAR		3	3												
62	9007649	WASHER, EXT. TOOTH #6		10	10	10	10	10									
63	9006027-01	SCR, PHL PAN HD. #6-32 X 7/8 LG		2	2												
64	B-MD-7408955	BRACKET		1	0	1	1	1									
65	B-MD-7408956	CLAMP		1	0	1	1	1									
66	1005306	CAP 6.8 MFD 35V 10%		2	2	2	2	2									
67	1001610	CAP .01 MFD 100V 20%		1	1	1	1	1									
68	1300316	RES 470 OHM 1/2 W 10%		2	2	2	2	2									
69	1300229	RES 100 OHM 1/2 W 5%		1	1	1	1	1									
70	7015804	INTERLOCK, POWER		1	1	1	1	1									
71	9006037-1	SCREW #8-32 x 3/8 LONG		2	2	2	2	2									
TITLE		PC05 READER, PUNCH, DRIVER		ASSY NO.		D-UA-PC05-0-0		SIZE CODE		NUMBER		PC05-0-0		REV.		ECO NO.	
				SHEET 4		OF 4		DIST. G						V		PC05-00031	
DEC FORM DEC 16-(325)-1031-N870 DRA 110																	

This drawing and specifications, herein, are the property of Digital Equipment Corporation and shall not be reproduced or copied in whole or in part as the basis for the manufacture or sale of items without written permission.

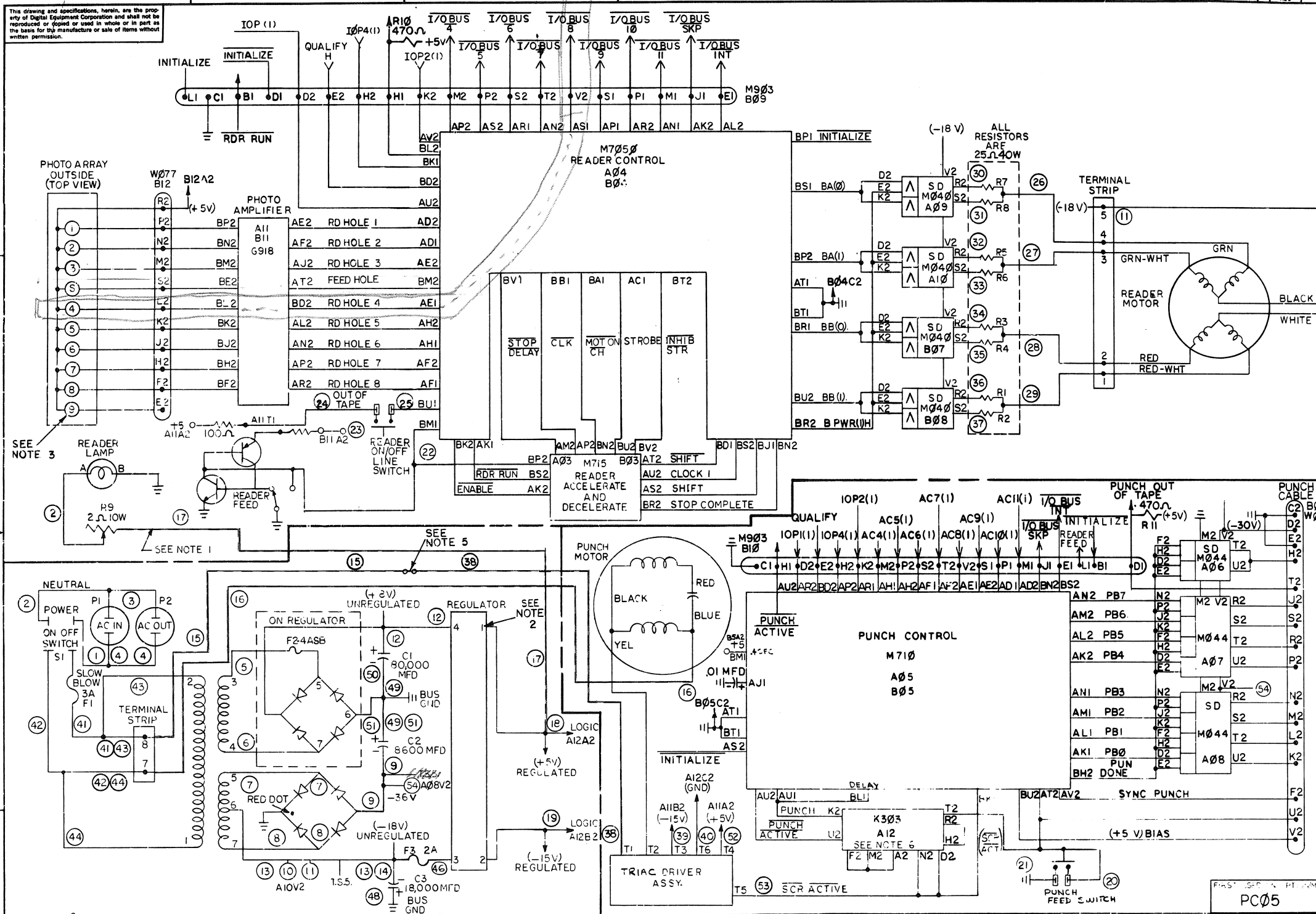
- NOTES:**
1. DOTTED LINES INDICATE POSSIBLE CONNECTIONS BETWEEN POWER SUPPLY, READER, PUNCH AND TRIAC DRIVER. SEE LEGEND.
 2. THE UNCIRCLED NUMBERS 1 THRU 7 REFER TO CONNECTIONS ON REGULATOR BOARD.
 3. THIS PHOTO - TRANSISTOR USED TO DETECT OUT OF TAPE.
 4. CIRCLED NUMBERS 1 THRU 53 ARE WIRE NUMBERS. SEE TABLE.
 5. WIRE #15 AND #38 ARE BUSSED TOGETHER ON SWITCH PANEL. ON C, CA, P, PA MODELS ONLY. ON R MODEL THESE WIRES WILL BE CONNECTED AS USUAL TO THEIR APPROPRIATE TABS.
 6. WHEN M710 CKT REV H & HIGHER IS USED, DELETE K303 MODULE.

WIRE TABLE

WIRE NO.	COLOR	WIRE NO.	COLOR
1	RED	24	WHITE-YELLOW
2	WHITE	25	BROWN
3	WHITE	26	WHITE-BROWN
4	RED	27	WHITE-ORANGE
5	ORANGE	28	WHITE-YELLOW
6	GRAY-BLUE	29	WHITE-VIOLET
7	GRAY-WHITE	30	BROWN
8	YELLOW	31	BROWN
9	BLUE	32	ORANGE
10	GREEN	33	ORANGE
11	GREEN	34	YELLOW
12	GRAY-VIOLET	35	YELLOW
13	GREEN	36	VIOLET
14	GREEN	37	VIOLET
15	RED	38	RED
16	WHITE	39	WHITE-BLUE
17	GRAY-RED	40	WHITE-GREEN
18	GRAY-RED	41	RED
19	GRAY-YELLOW	42	WHITE
20	WHITE	43	RED
21	BLACK	44	WHITE
22	YELLOW	45	GREEN
23	WHITE-BLACK	46	GRAY-RED
24	BLACK	47	RED
25	GREEN	48	RED
26	BLUE	49	RED

LEGEND

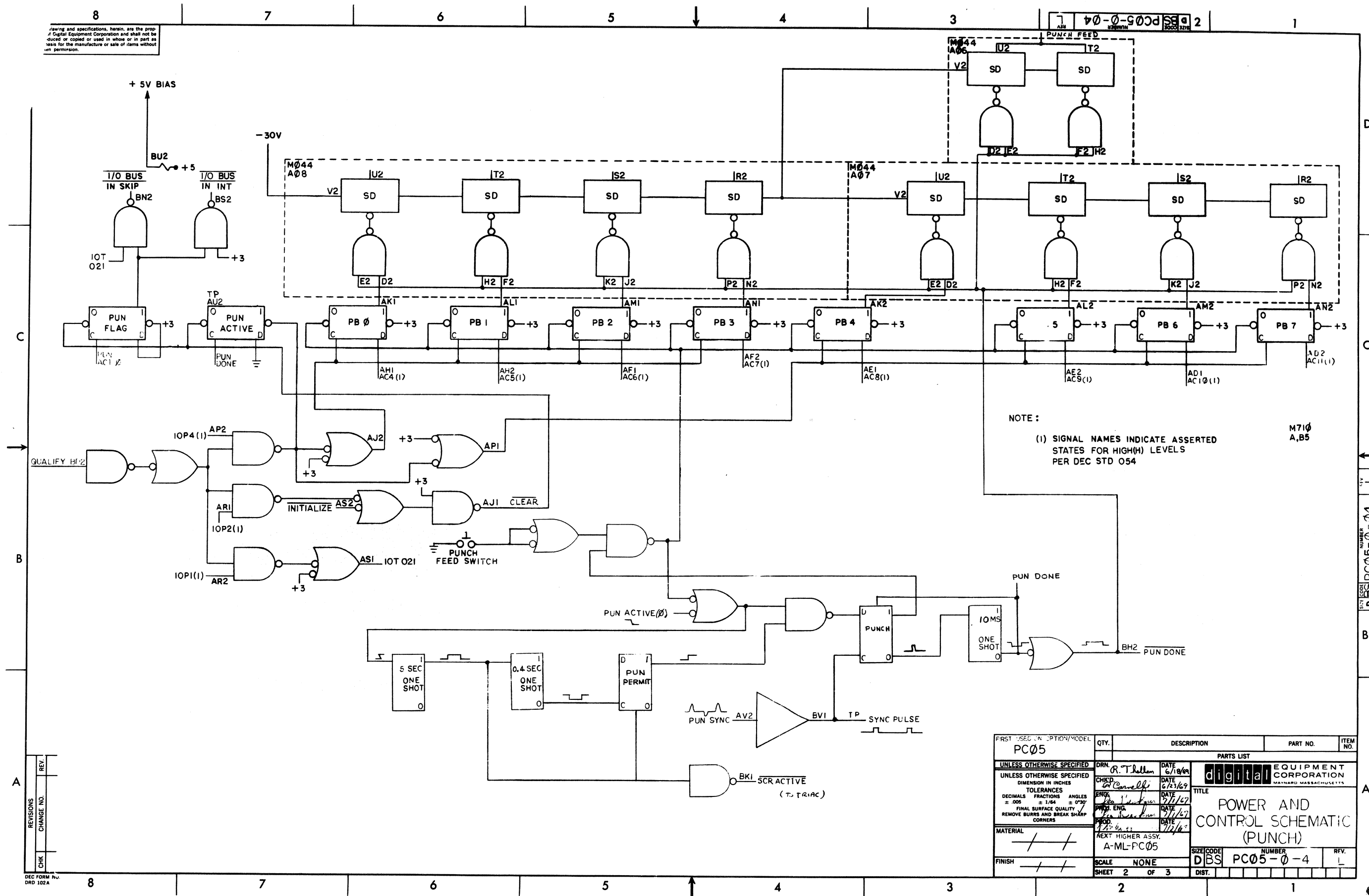
CONNECTIONS	MODEL	PC05-P	PC05-R
PWR SUP TO READER	PC05-C		
PWR SUP TO PUNCH	PC05-CA		
TRIC DRIVER TO PUNCH	PC05-C		
PWR SUP TO TRIAC DRIVER	PC05-C		
	PC05-CA		



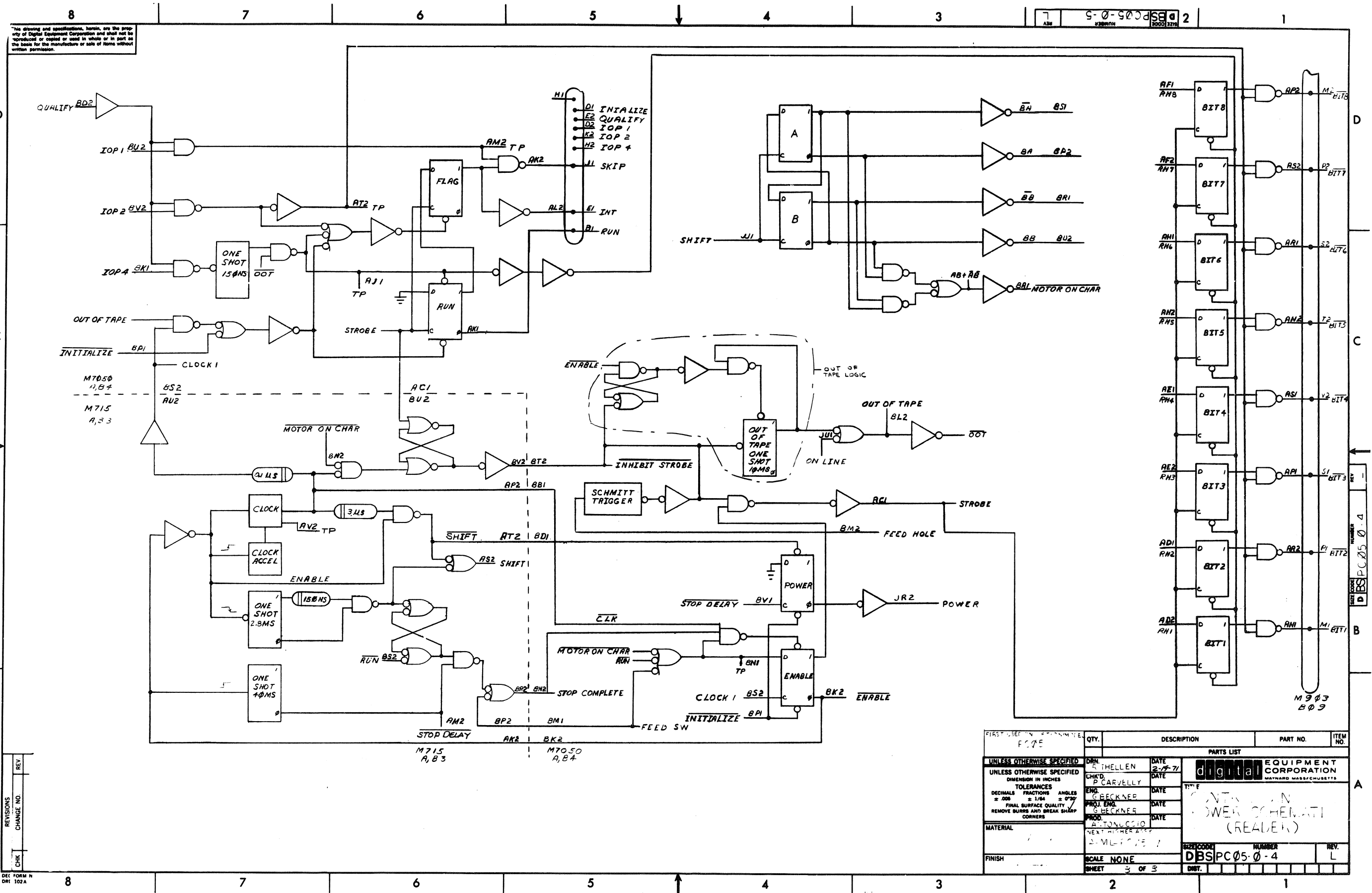
REV.	NO.	DATE	BY	CHKD.	APP'D.
1	00003	1/1/69	E. LUTTIG		
2	00005	1/1/69	E. LUTTIG		
3	00016	1/1/69	E. LUTTIG		
4	00023	1/1/69	E. LUTTIG		
5	00024	1/1/69	E. LUTTIG		
6	00025	1/1/69	E. LUTTIG		
7	00026	1/1/69	E. LUTTIG		
8	00027	1/1/69	E. LUTTIG		
9	00028	1/1/69	E. LUTTIG		
10	00029	1/1/69	E. LUTTIG		
11	00030	1/1/69	E. LUTTIG		
12	00031	1/1/69	E. LUTTIG		
13	00032	1/1/69	E. LUTTIG		
14	00033	1/1/69	E. LUTTIG		
15	00034	1/1/69	E. LUTTIG		
16	00035	1/1/69	E. LUTTIG		
17	00036	1/1/69	E. LUTTIG		
18	00037	1/1/69	E. LUTTIG		
19	00038	1/1/69	E. LUTTIG		
20	00039	1/1/69	E. LUTTIG		
21	00040	1/1/69	E. LUTTIG		
22	00041	1/1/69	E. LUTTIG		
23	00042	1/1/69	E. LUTTIG		
24	00043	1/1/69	E. LUTTIG		
25	00044	1/1/69	E. LUTTIG		
26	00045	1/1/69	E. LUTTIG		
27	00046	1/1/69	E. LUTTIG		
28	00047	1/1/69	E. LUTTIG		
29	00048	1/1/69	E. LUTTIG		
30	00049	1/1/69	E. LUTTIG		
31	00050	1/1/69	E. LUTTIG		
32	00051	1/1/69	E. LUTTIG		
33	00052	1/1/69	E. LUTTIG		
34	00053	1/1/69	E. LUTTIG		
35	00054	1/1/69	E. LUTTIG		
36	00055	1/1/69	E. LUTTIG		
37	00056	1/1/69	E. LUTTIG		
38	00057	1/1/69	E. LUTTIG		
39	00058	1/1/69	E. LUTTIG		
40	00059	1/1/69	E. LUTTIG		
41	00060	1/1/69	E. LUTTIG		
42	00061	1/1/69	E. LUTTIG		
43	00062	1/1/69	E. LUTTIG		
44	00063	1/1/69	E. LUTTIG		
45	00064	1/1/69	E. LUTTIG		
46	00065	1/1/69	E. LUTTIG		
47	00066	1/1/69	E. LUTTIG		
48	00067	1/1/69	E. LUTTIG		
49	00068	1/1/69	E. LUTTIG		
50	00069	1/1/69	E. LUTTIG		
51	00070	1/1/69	E. LUTTIG		
52	00071	1/1/69	E. LUTTIG		
53	00072	1/1/69	E. LUTTIG		
54	00073	1/1/69	E. LUTTIG		
55	00074	1/1/69	E. LUTTIG		
56	00075	1/1/69	E. LUTTIG		
57	00076	1/1/69	E. LUTTIG		
58	00077	1/1/69	E. LUTTIG		
59	00078	1/1/69	E. LUTTIG		
60	00079	1/1/69	E. LUTTIG		
61	00080	1/1/69	E. LUTTIG		
62	00081	1/1/69	E. LUTTIG		
63	00082	1/1/69	E. LUTTIG		
64	00083	1/1/69	E. LUTTIG		
65	00084	1/1/69	E. LUTTIG		
66	00085	1/1/69	E. LUTTIG		
67	00086	1/1/69	E. LUTTIG		
68	00087	1/1/69	E. LUTTIG		
69	00088	1/1/69	E. LUTTIG		
70	00089	1/1/69	E. LUTTIG		
71	00090	1/1/69	E. LUTTIG		
72	00091	1/1/69	E. LUTTIG		
73	00092	1/1/69	E. LUTTIG		
74	00093	1/1/69	E. LUTTIG		
75	00094	1/1/69	E. LUTTIG		
76	00095	1/1/69	E. LUTTIG		
77	00096	1/1/69	E. LUTTIG		
78	00097	1/1/69	E. LUTTIG		
79	00098	1/1/69	E. LUTTIG		
80	00099	1/1/69	E. LUTTIG		
81	00100	1/1/69	E. LUTTIG		

PC05		QTY.	DESCRIPTION	PART NO.	ITEM NO.
PARTS LIST					
<div> <div> UNLESS OTHERWISE SPECIFIED DIMENSION IN INCHES TOLERANCES DECIMALS FRACTIONS ANGLES ± .005 ± 1/64 ± 0°30' FINAL SURFACE QUALITY REMOVE BURRS AND BREAK SHARP CORNERS </div> <div> DATE 1/1/69 BY E. LUTTIG CHKD. E. LUTTIG APP'D. E. LUTTIG </div> </div>					
<div> <div> MATERIAL FINISH </div> <div> SCALE NONE SHEET 1 OF 3 </div> </div>					
<div> <div> TITLE POWER AND CONTROL SCHEMATIC </div> <div> SIZE CODE DIBS PC05-0-4 </div> </div>					

Drawing and specifications herein are the property of Digital Equipment Corporation and shall not be reproduced or copied or used in whole or in part as basis for the manufacture or sale of items without written permission.



FIRST USED IN OPTION/MODEL		QTY.	DESCRIPTION	PART NO.	ITEM NO.
PC05					
UNLESS OTHERWISE SPECIFIED		PARTS LIST			
UNLESS OTHERWISE SPECIFIED		DRN.	DATE	digital EQUIPMENT CORPORATION	
DIMENSION IN INCHES		CHKD.	DATE	MAYNARD MASSACHUSETTS	
TOLERANCES		ENG.	DATE	TITLE	
DECIMALS	FRACTIONS	DATE	DATE	POWER AND	
± .005	± 1/64	DATE	DATE	CONTROL SCHEMATIC	
FINAL SURFACE QUALITY		DATE	DATE	(PUNCH)	
REMOVE BURRS AND BREAK SHARP CORNERS		DATE	DATE		
MATERIAL		NEXT HIGHER ASSY.		SIZE CODE	
/ /		A-ML-PC05		NUMBER	
FINISH		SCALE NONE		DBS PC05-0-4	
/ /		SHEET 2 OF 3		REV.	
				L	
				DIST.	



REV.	CHG.	NO.
1		
2		
3		
4		
5		
6		
7		
8		

DET FORM N
DRI 102A

QTY.	DESCRIPTION	PART NO.	ITEM NO.
1	POWER SUPPLY	POWER SUPPLY	1
1	ENABLE	ENABLE	2
1	STOP DELAY	STOP DELAY	3
1	CLOCK 1	CLOCK 1	4
1	ONE SHOT 40MS	ONE SHOT 40MS	5
1	ONE SHOT 2.8MS	ONE SHOT 2.8MS	6
1	CLOCK ACCEL	CLOCK ACCEL	7
1	3.4US	3.4US	8
1	4US	4US	9
1	150MS	150MS	10
1	150MS	150MS	11
1	150MS	150MS	12
1	150MS	150MS	13
1	150MS	150MS	14
1	150MS	150MS	15
1	150MS	150MS	16
1	150MS	150MS	17
1	150MS	150MS	18
1	150MS	150MS	19
1	150MS	150MS	20
1	150MS	150MS	21
1	150MS	150MS	22
1	150MS	150MS	23
1	150MS	150MS	24
1	150MS	150MS	25
1	150MS	150MS	26
1	150MS	150MS	27
1	150MS	150MS	28
1	150MS	150MS	29
1	150MS	150MS	30

REV.	CHG.	NO.
1		
2		
3		
4		
5		
6		
7		
8		

DET FORM N
DRI 102A

This drawing and specifications, herein, are the property of Digital Equipment Corporation and shall not be reproduced or copied or used in whole or in part as the basis for the manufacture or sale of items without written permission.

MODEL	MODULE LIST
PCØ5-C, PCØ5-CA	A3 – A12, B6 – B12
PCØ5-P, PCØ5-PA	A5, A6, A7, A8, A12, B6, B10
PCØ5-R	A3, A4, A9, A10, A11, B7, B8, B9, B12

NOTES:

- 1 REF. G-AD-5408231-0-0
2 DELETE THIS MODULE WHEN CKT REV H
AND UP OF M710 IS USED. (ETCH F)
3 M715 MUST BE OF REVISION (K CIRCUIT
OR HIGHER. (ETCH
4 G918 MUST BE OF REVISION (B CIRCUIT
OR HIGHER. (ETCH

		1	2	3	4	5	6	7	8	9	10	11	12	
A				M715 READER CLOCK	M7Ø5Ø READER CONTROL	M71Ø PUNCH CONTROL	MØ44	MØ44	MØ44	MØ4Ø	MØ4Ø	G918 PHOTO AMPLIFIER	K3Ø3 *	
B							WØ23 PUNCH CONN	MØ4Ø	MØ4Ø	M9Ø3	M9Ø3	G918 PHOTO AMPLIFIER	WØ77 PHOTO HEAD	K3Ø3 *

--SEE NOTE 1,2

-SEE NOTE 3

—SEE NOTE 4

REVISIONS		
CHK	CHANGE NO.	REV.
<i>2nd</i>	PC05-00001	A
<i>Index Memoes P-27-61</i>		
<i>G. BECKNER</i>		
<i>Th. Beckner 9-3-69</i>		
	PC05-00021	B
<i>M. Beckner 4-3-71</i>		
<i>LEIS</i>		
<i>m. L. 12471</i>		

FIRST USED ON OPTION/MODEL		QTY.	DESCRIPTION	PART NO.	ITEM NO.
PCØ5			PARTS LIST		
UNLESS OTHERWISE SPECIFIED		DRN.	DATE	digital EQUIPMENT CORPORATION MAYNARD, MASSACHUSETTS	
UNLESS OTHERWISE SPECIFIED		CHK'D.	DATE	TITLE MODULE UTILIZATION LIST PCØ5	
DIMENSION IN INCHES		DATE	DATE		
TOLERANCES		ENG.	DATE		
DECIMALS FRACTIONS ANGLES		PROJ. ENG.	DATE		
± .005 ± 1/64 ± 0°30'		PROD.	DATE		
FINAL SURFACE QUALITY ✓					
REMOVE BURRS AND BREAK SH- RP CORNERS					
MATERIAL		NEXT HIGHER ASSY.			
+		A-ML- PCØ5-Ø			
FINISH		SCALE	SIZE CODE	NUMBER	REV.
+		SHEET	C MU	PCØ5-Ø-3	B
		OF	DIST.		

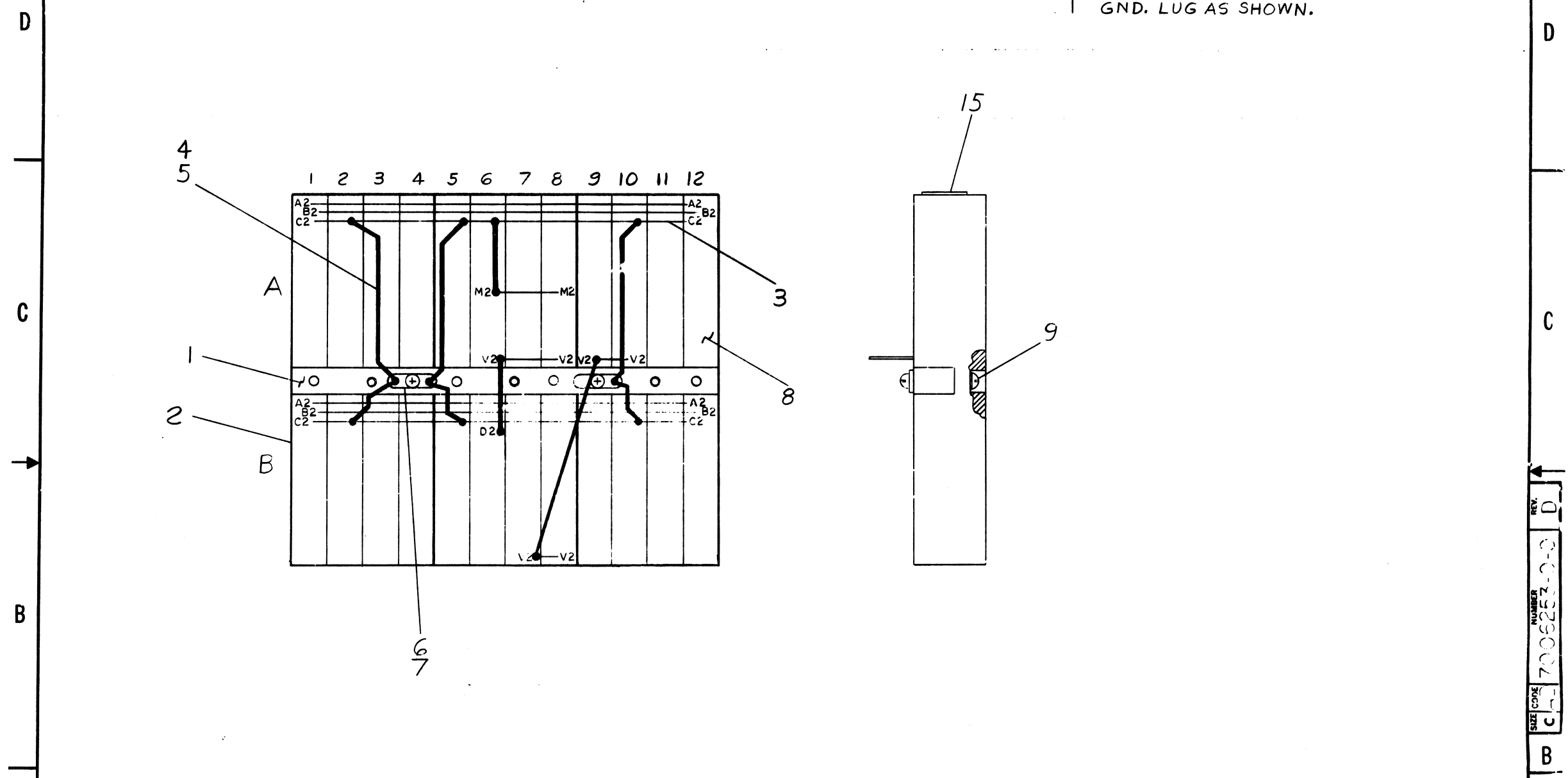
DEC FORM NO.
DRC 100

[illegible]

DEC FORM NO.
DRA 110

This drawing and specifications, herein, are the property of Digital Equipment Corporation and shall not be reproduced or copied or used in whole or in part as the basis for the manufacture or sale of items without written permission.

NOTES:
1. CONNECTIONS ON ITEM 3 & 4 TO B SOLDERED AND LOCATED AT MINIMUM PRACTICAL HEIGHT ABOVE BLOCKS.
2. CONNECTOR BLOCKS TO BE GROUNDED TO GND. LUG AS SHOWN.



REV.	CHANGE NO.	CHK	DATE
A	PC05-00003		
B	PC05-00016		
C	PC05-00021		
D	PC05-00030		
E	PC05-00030		
F	PC05-00030		
G	PC05-00030		
H	PC05-00030		
I	PC05-00030		
J	PC05-00030		
K	PC05-00030		
L	PC05-00030		
M	PC05-00030		
N	PC05-00030		
O	PC05-00030		
P	PC05-00030		
Q	PC05-00030		
R	PC05-00030		
S	PC05-00030		
T	PC05-00030		
U	PC05-00030		
V	PC05-00030		
W	PC05-00030		
X	PC05-00030		
Y	PC05-00030		
Z	PC05-00030		

PC05	QTY.	DESCRIPTION	PART NO.	ITEM NO.
PARTS LIST				
UNLESS OTHERWISE SPECIFIED		DRN.	DATE	
UNLESS OTHERWISE SPECIFIED		CHK'D.	DATE	
DIMENSION IN INCHES		ENG.	DATE	
TOLERANCES		PROJ. ENG.	DATE	
DECIMALS FRACTIONS ANGLES		PROD.	DATE	
± .005 ± 1/64 ± 0°30'				
FINAL SURFACE QUALITY				
REMOVE BURRS AND BREAK SHARP CORNERS				
MATERIAL				
FINISH				
SCALE				
SHEET 1 OF 1				
TITLE		BUS BAR (PC05)		
SIZE CODE		NUMBER		
C AD		7006253-0-0		
DIST.		REV.		
		D		

DIGITAL EQUIPMENT CORPORATION MAYNARD, MASSACHUSETTS					QUANTITY / VARIATION															
PARTS LIST																				
MADE BY P. MARCOTTE		CHECKED <i>P. Arcelli</i>		SECTION																
DATE 6/10/69		DATE 6/18/69		1																
ENG <i>J. Beckner</i> 7/1/69		PROD <i>P. Arcelli</i> 7/2/69		ISSUED SECT.																
DATE		DATE		1																
ITEM NO.	DWG NO. / PART NO.	DESCRIPTION																		
1	B-IA-7407077-0-0	MTG. BAR 6IN.				1														
2	1205348	288 PIN CONN. BLOCK WRAPTYPE				3														
3	9008428	BUS STRIP - 44 HOLE				A/R														
4	9107560-01	#22 AWG BUS WIRE				A/R														
5	9107258-09	#22 TUBING TEFLON, WHITE				A/R														
6	9007597	TERMINAL, SHAKEPROOF #2116-08-00				2														
7	9006034-01	SCR PHL PAN HD #8-32 x.19 LG SST				2														
8	9105740-44	30 AWG SOLID KYNAR INS. WIRE, YELLOW				A/R														
9	9006120-06	SCR PHL FIL HD #8-32 x .62 LG SST				3														
10	1005300	CAP 6.8 MFD 35V 10%				2														
11	1001510	CAP .01 MFD 100V 20%				1														
12	1002627	CAP 3.2 MFD 20V 10%				1														
REF	K-WL-PCØ5-Ø-2	WIRE LIST				1														
13	1300317	RES 470 OHM 1/4 W 10%				2														
14	1300231	RES 100 ohm 1/4 W 5%				1														
15	A-DC-7411881-01	DECAL LOGIC ASSY				1														
16	3700040-00	PACKAGING INSTRUCTIONS				REF														
17	9905016-4	COMPRESS - O - CARTON				A/R														
21	A-WT-7006253-0	AWT REVISION STATUS				REF														
TITLE		ASSY NO.		SIZE	CODE	NUMBER				REV.	ECO NO.									
BUS BAR (PCØ5)		C-AD-7006253-0-0		A	PL	7006253-0-0				D	PC05-00C30									
		SHEET 1 OF 1		DIST.																