

THIS IS PRINT SET

--	--	--	--

SEQUENCE

B-DD-861-D
E-UA-861-D-Ø
D-CS-5411522-0-1
D-CS-861-D-1
A-PL-861-D-Ø

SEQUENCE

UNIT VARIATIONS

PRINT SET

VAR

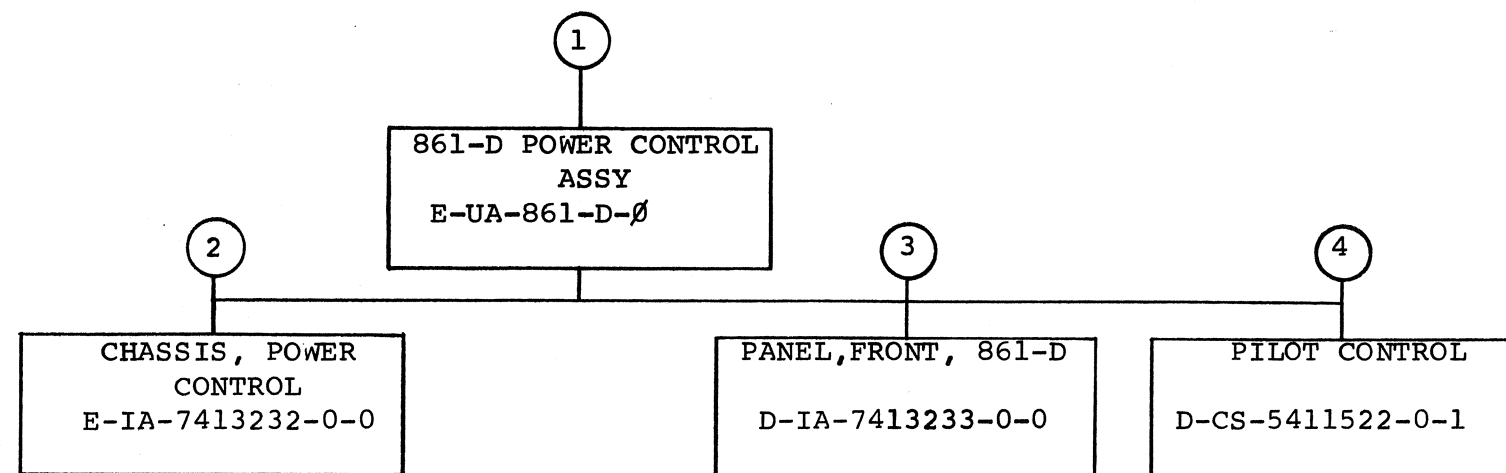
TITL

861-D

861-D POWER CONTROL

[illegible]

DEC 16-(325)-1062-1A-R972



TITLE	SHEET	OF	SIZE	CODE	NUMBER	REV
861-D POWER CONTROL	2	3	B	DD	861-D	

CUSTOMER PRINT SET				MECHANICAL					CUSTOMER PRINT SET				ELECTRICAL						
MFG. SET				FIND NO.	DRAWING NO.	REV	NO OF SHT	DESCRIPTION	OPTION NO./FILE DATE	MFG. SET				FIND NO.	DRAWING NO.	REV	NO OF SHT	DESCRIPTION	OPTION NO./FILE DATE
X				1	E-UA-861-D-Ø	*	2	861-D POWER CONTROL ASSY		X				1	B-DD-861-D	*	2	861-D POWER CONTROL ASSY	
X					A-PL-861-D-Ø	*	3	861-D POWER CONTROL ASSY P.L.		X					D-CS-861-D-1	*	1	861-D POWER CONTROL SCHEMATIC	
					C-MD-7413234-0-0		1	COVER, POWER CONTROL											
					D-MD-7413419-0-0		1	BRACKET, STRAIN RELIEF											
					C-IA-7011052-0-0		1	MOV ASSY											
					C-IA-7011053-0-0		1	PILOT LAMP ASSY											
					D-IA-7010966-0-0		1	HARNESS #1, POWER CONTROL											
					D-IA-7010967-0-0		1	HARNESS #3, POWER CONTROL											
					D-IA-7010969-0-0		1	HARNESS #5, POWER CONTROL											
					D-IA-7010970-0-0		1	HARNESS #6, POWER CONTROL											
					C-IA-7010968-0-0		1	HARNESS #8, POWER CONTROL		X				4	D-CS-5411522-0-1	*	1	PILOT CONTROL	
					D-IA-7010972-0-0		1	JUMPER, WIRE											
				2	E-IA-7413232-0-0		2	CHASSIS, POWER CONTROL											
					B-SS-7413232-0-1		1	SILK SCREEN, CHASSIS											
				3	D-IA-7413233-0-0		2	PANEL, FRONT, 861-D											
					B-SS-7413233-0-1		1	SILK SCREEN, FRONT PANEL, 861-D											

CUSTOMER PRINT SET CODES

X = PRINT OF DOCUMENT INCLUDED IN PRINT SET
C = INCLUDES ALL PRINTS INDICATED ON DOCUMENT
S = CONFIDENTIAL AUTHORIZED SIGNATURE REQUIRED

TITLE

861-D POWER CONTROL

SHEET OF

3 3

SIZE CODE

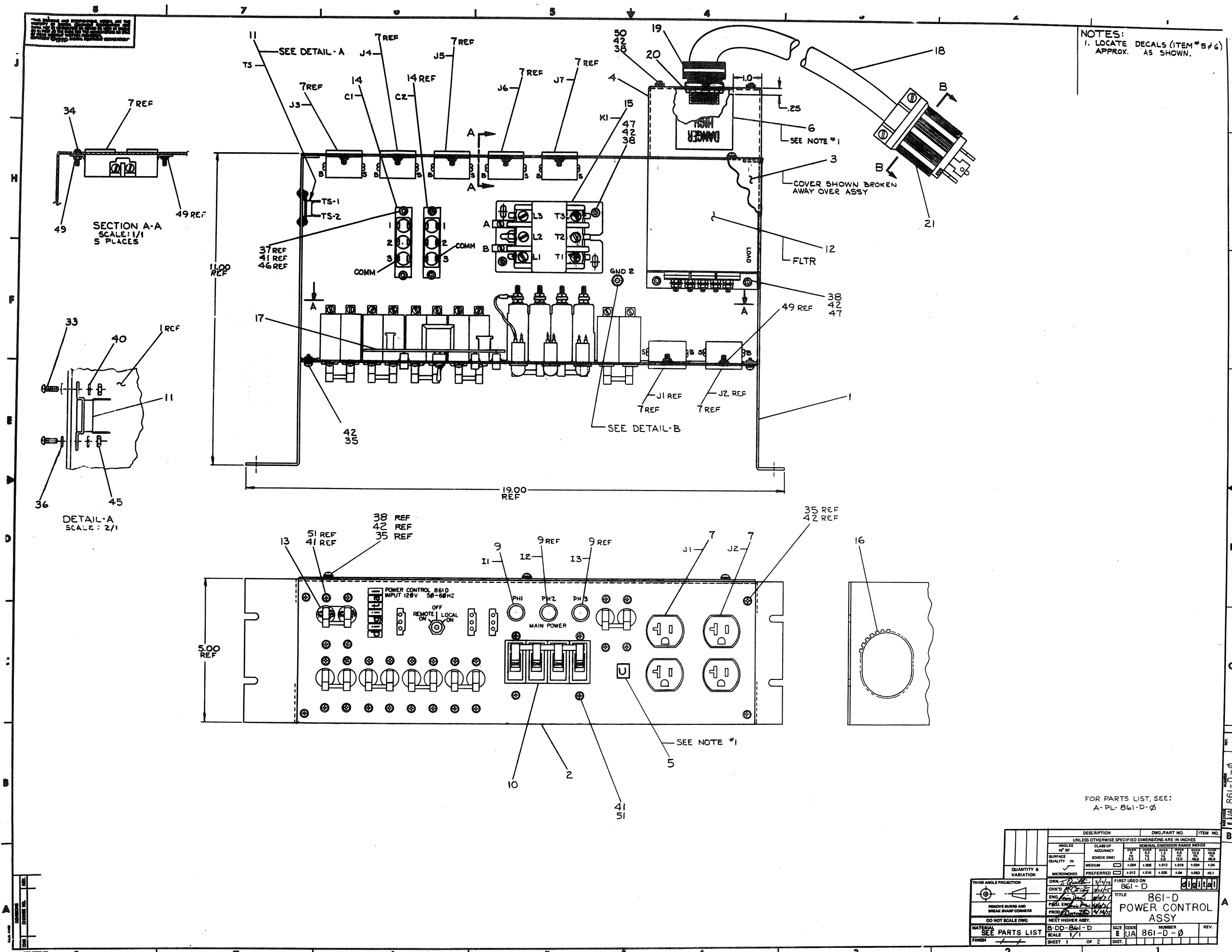
B DD

NUMBER

861-D

REV

DRB 108



NOTES:
1. LOCATE DECALS (ITEM # 5 & 6)
APPROX. AS SHOWN.

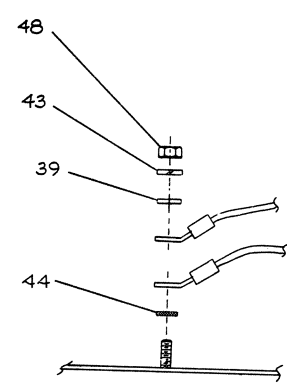
FOR PARTS LIST, SEE:
A-PL-861-D-0

DESCRIPTION		DWG. PART NO.	ITEM NO.
UNLESS OTHERWISE SPECIFIED DIMENSIONS ARE IN INCHES			
ANGLES	CLASS OF		
30°	ACQUACY		
SURFACE	CHECK ONE		
QUALITY			
IN			
MICROMETERS			
PREFERRED			
QUANTITY & VARIATION			
THIRD ANGLE PROJECTION			
REMOVE BURRS AND BREAK SHARP CORNERS			
DO NOT SCALE DIMS			
MATERIAL	SEE PARTS LIST		
FINISH			
861-D			
POWER CONTROL ASSY			
B-DD-861-D			
SCALE 1/1			
SHEET 1 OF 2			

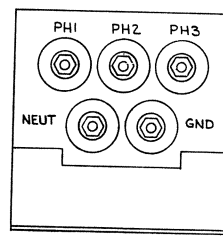
CONNECTION CHART					
ITEM NO.	DESCRIPTION	FROM	TO	REMARKS	
22	BLU 10	HARNESS 1-1	K1-T3		
	BLK	-2	K1-T1		
	RED	-3	K1-T2		
	RED	-4	CB7-C-LOAD		
23	BLU 10	HARNESS 3-1	CB7-D-LOAD		
	RED	-2	CB7-B-LOAD		
	BLK	-3	CB7-C-LINE		
	BLU	-4	CB7-D-LINE		
24	WHT	-5	CB7-B-LINE		
	GRN	-6	CB7-A-LINE		
	WHT	-7	GND #2		
	GRN	-8	FLTR-LOAD-NEUT		
25	GRN	-9	FLTR-LOAD-GND		
	BLK	-10	FLTR-LOAD-PH1		
	BLU	-11	FLTR-LOAD-PH2		
	RED	-12	FLTR-LOAD-PH3		
26	BLK 14	HARNESS 5-1	CB2-B-LINE		
	BLK	-2	CB7-D-LOAD		
	WHT	-3	CB2-A-LINE		
	WHT	-4	CB7-A-LOAD		
27	BLU	-5	PLT CONT-J4		
	WHT	-6	CB7-A-LOAD		
	WHT	-7	CB4-A-LOAD		
	RED	-8	CB5-B-LINE		
28	WHT	-9	CB5-A-LINE		
	WHT/BLU	-10	PLT CONT-J5		
	RED	-11	CB4-B-LINE		
	WHT	-12	CB4-A-LINE		
29	BLU	-13	CB1-B-LINE		
	WHT	-14	CB1-A-LINE		
	BLU	-15	CB3-B-LINE		
	WHT	-16	CB3-A-LINE		
30	WHT	-17	CB7-A-LOAD		
	BLU	-18	CB7-B-LOAD		
	WHT	-19	CB7-C-LOAD		
	WHT	-20	CB7-A-LINE		
31	GRN	-21	CB7-B-LINE		
	BLU	-22	CB7-C-LINE		
	RED	-23	CB7-A-LOAD		
	BLU	-24	CI-1		
32	BLU	-25	K1-L3		
	BLU	-26	C2-1		
	RED	-27	K1-L2		
	RED	-28	K1-L1		
33	RED	-29	CI-2		
	BLK	-30	K1-L1		
	BLK	-31	K1-L2		
	BLK	-32	K1-L3		
34	WHT	-33	K1-A		
	BLU	-34	CB7-A-LOAD		
	RED	-35	CB7-B-LOAD		
	RED	-36	CB7-C-LOAD		
35	BLK	-37	CB7-A-LINE		
	BLU	-38	CB7-B-LINE		
	RED	-39	CB7-C-LINE		
	RED	-40	CB7-A-LOAD		
36	BLK 22	HARNESS 5-2	CB7-B-LINE		
	RED	-41	CB7-C-LOAD		
	RED	-42	CB7-A-LINE		
	RED	-43	CB7-B-LINE		
37	BLK 22	HARNESS 5-3	CB7-C-LOAD		
	RED	-44	CB7-A-LINE		
	RED	-45	CB7-B-LINE		
	RED	-46	CB7-C-LINE		
38	BLK 22	HARNESS 5-4	CB7-A-LOAD		
	RED	-47	CB7-B-LOAD		
	RED	-48	CB7-C-LOAD		
	RED	-49	CB7-A-LINE		

CONNECTION CHART					
ITEM NO.	DESCRIPTION	FROM	TO	REMARKS	
25	WHT 14	HARNESS 6-1	J7-S		
	BLK	-2	J7-B		
	WHT	-3	J6-S		
	RED	-4	J6-B		
26	WHT	-5	J5-S		
	RED	-6	J5-B		
	WHT	-7	J4-S		
	BLU	-8	J4-B		
27	WHT	-9	J3-S		
	BLU	-10	J3-B		
	WHT	-11	CB1-A-LOAD		
	BLU	-12	CB1-B-LOAD		
28	WHT	-13	CB3-A-LOAD		
	BLU	-14	CB3-B-LOAD		
	WHT	-15	CB4-A-LOAD		
	RED	-16	CB4-B-LOAD		
29	WHT	-17	CB5-A-LOAD		
	RED	-18	CB5-B-LOAD		
	WHT	-19	CB6-A-LOAD		
	BLK 14	HARNESS 6-20	CB6-B-LOAD		
30	WHT 14	HARNESS 8-1	TS-1		
	WHT 14	HARNESS 8-2	TS-2		
	WHT 14	HARNESS 8-3	TS-3		
	WHT 14	HARNESS 8-4	TS-4		
31	GRN 10	GND #1	GND #2		
	WHT 14	CI-3	GND #3		
	WHT 14	J1-S	J2-S		
	GRN 14	PLT CONT-J7	GND #1		
32	BLK 14	J1-B	J2-B		
	BLK 10	FLTR-LINE-PH1	PLUG-X		
	RED	FLTR-LINE-PH2	PLUG-Y		
	ORN	FLTR-LINE-PH3	PLUG-Z		
33	WHT	FLTR-LINE-NEUT	PLUG-W		
	GRN 10	FLTR-LINE-GND	PLUG-G		
	BLK	K1-A	K1-B		
	BLK	K1-A	K1-B		

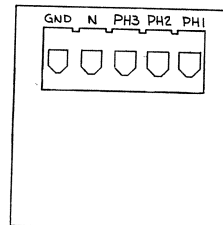
NOTES FOR WIRING:
1. FOR HARNESS POINT NUMBERS,
REFER TO HARNESS DWG.



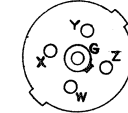
DETAIL B
TYPICAL FOR "GND 1" & "GND 2"



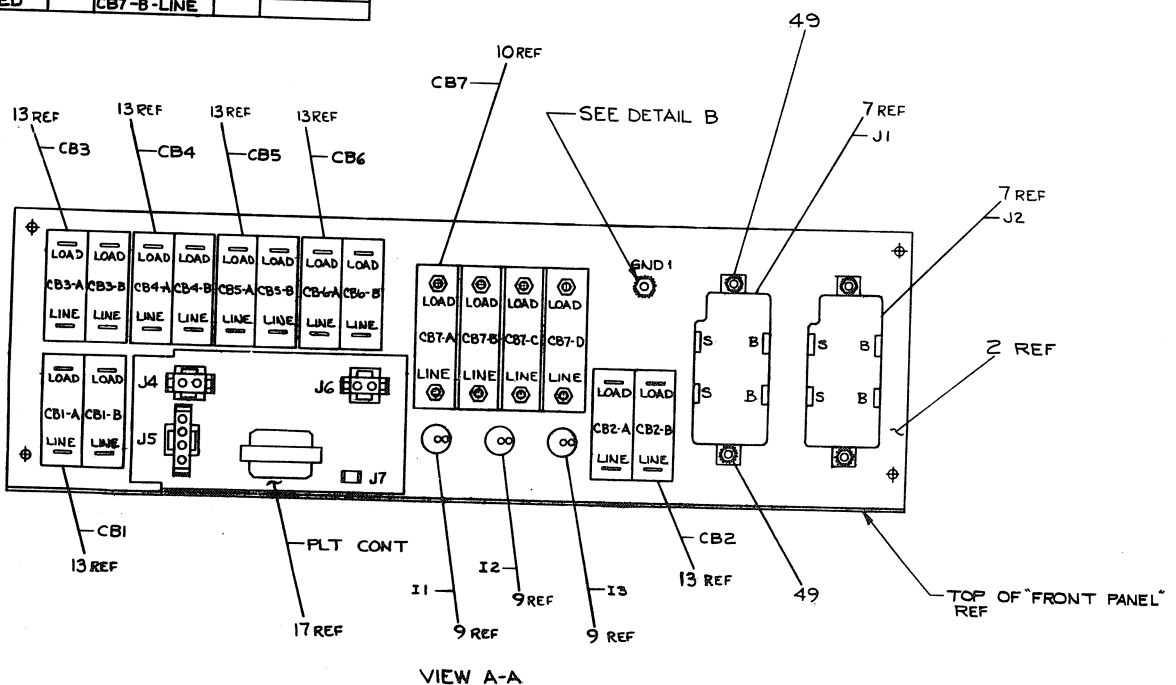
FILTER
(ITEM 12)
LOAD SIDE



FILTER
(ITEM 12)
LINE SIDE



SECTION B-B
SCALE: NONE
"TWIST LOCK PLUG" (ITEM 21)

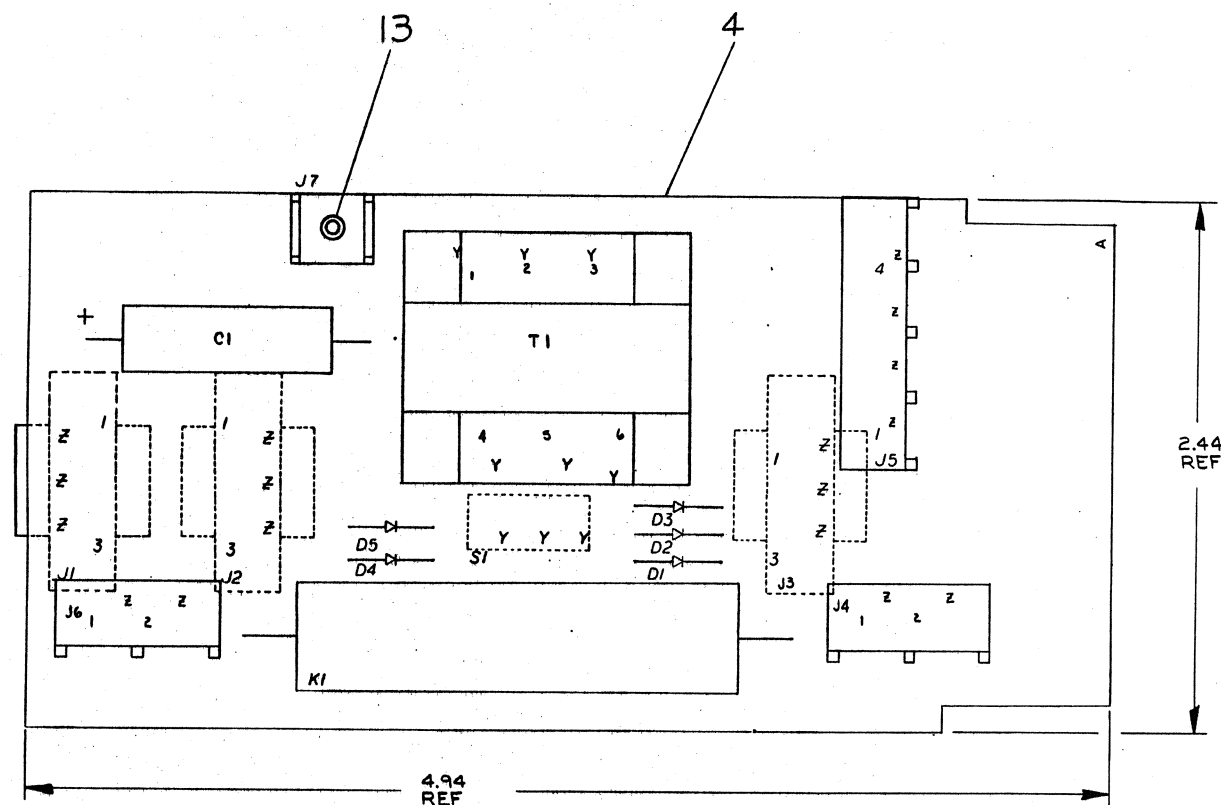
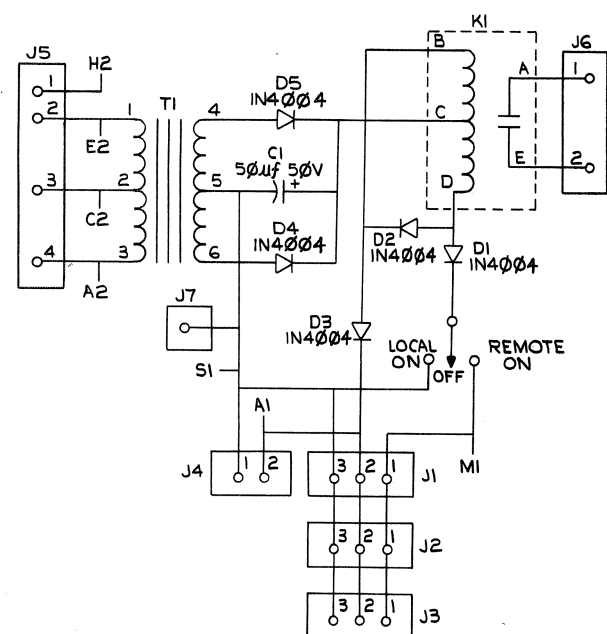


VIEW A-A

DESCRIPTION		DWG. PART NO.		ITEM NO.	
UNLESS OTHERWISE SPECIFIED DIMENSIONS ARE IN INCHES					
ANGLES	CLASS OF	0.004	0.005	0.006	0.008
OF 30°	ACCURACY	0.004	0.005	0.006	0.008
SURFACE	CHECK ONE	0.004	0.005	0.006	0.008
QUALITY	IN	0.004	0.005	0.006	0.008
QUANTITY & VARIATION	QUANTITY	0.004	0.005	0.006	0.008
THIRD ANGLE PROJECTION	THIRD ANGLE PROJECTION	0.004	0.005	0.006	0.008
REMOVE BURRS AND BREAK SHARP CORNERS	REMOVE BURRS AND BREAK SHARP CORNERS	0.004	0.005	0.006	0.008
DO NOT SCALE DWG	DO NOT SCALE DWG	0.004	0.005	0.006	0.008
MATERIAL	MATERIAL	0.004	0.005	0.006	0.008
FINISH	FINISH	0.004	0.005	0.006	0.008
TITLE		861-D		POWER CONTROL ASSY	
SCALE		1/1		SHEET 2 OF 2	
SHEET 2 OF 2		DIST.		REV.	

THIS DRAWING AND SPECIFICATIONS, HEREIN, ARE THE PROPERTY OF DIGITAL EQUIPMENT CORPORATION AND SHALL NOT BE REPRODUCED OR COPIED OR USED IN WHOLE OR IN PART AS THE BASIS FOR THE MANUFACTURE OR SALE OF ITEMS WITHOUT WRITTEN PERMISSION. COPYRIGHT © 1975, DIGITAL EQUIPMENT CORPORATION

NOTES:

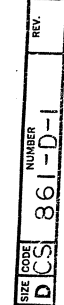


REF	X-Y COORDINATE HOLE LOCATION	K-CO-5411522-0-4	1
REF	ASSY/DRILLING HOLE LAYOUT	D-AH-5411522-0-5	2
REF	MODULE ECO HISTORY	B-MH-5411522-Q-6	3
1	ETCHED CIRCUIT BOARD	5011521	4
1	K1	RELAY, REED, 48 V COIL, 2.5 A CONT.	5
1	T1	TRANSFORMER MMC 5415	6
1	C1	CAP 50 MFD 50V TANT	7
5	D1-D5	DIODE IN4004	8
1	S1	SWITCH	9
3	J1-J3	HOUSING, SOCKET	10
1	J5	CONN, UNIVERSAL, 4 PIN HEADER	11
2	J4, J6	CONN, UNIVERSAL, 2 PIN HEADER	12
1		EYELET	13
9		TERMINAL, SOCKET CONTACT	14
1	J7	TERMINAL, SOLDERLESS	15

QTY	REF DESIGNATION	DESCRIPTION	PART NO.	ITEM NO.
PARTS LIST				
ETCH BOARD REV B				
FIRST USED ON OPTION MODEL 861-D / 861-E				
DRN DATE 2/4/75				
CHK'D DATE 3/4/75				
ENG DATE 2/4/75				
PROJ. ENG DATE 2/4/75				
PROD DATE 2/4/75				
NEXT HIGHER ASSY E-UA-861-D-0				
DEC NO.	EIA NO.	DEC NO.	EIA NO.	SCALE NONE
SEMICONDUCTOR CONVERSION CHART				SHEET 1 OF 1
digital EQUIPMENT CORPORATION				TITLE PILOT CONTROL
SIZE CODE DCS5411522-0-1				NUMBER A
DIST.				REV.

IC TYPE	GND	+ 5V
GND AND 5V ARE USUALLY PIN 7 AND 14 RESPECTIVELY. EXCEPTIONS ARE STATED ABOVE.		
IC PIN LOCATIONS		

2	SIZE CODE	CS	NUMBER 861-D-1	REV.
---	--------------	----	-------------------	------



REVISES		REV.
CHK	CHANGE NO.	

DIGITAL EQUIPMENT CORPORATION
MAYNARD, MASSACHUSETTS

PARTS LIST

MADE BY
Tyrone Quilllin

CHECKED
M. Carthy

SECTION
1

DATE
3/11/75

DATE
4/9/75

ISSUED SECT.
1

ENG
Jim Dwyer

PROD
Jim Bonetto

DATE
4/11/75

DATE
4/11/75

ITEM NO.	DWG NO. / PART NO.	DESCRIPTION	QTY	REV.	ECO NO.
1	E-IA-7413232-0-0	CHASSIS, POWER CONTROL	1		
2	D-IA-7413233-0-0	PANEL, FRONT, 861-D	1		
3	C-MD-7413234-0-0	COVER, POWER CONTROL	1		
4	D-MD-7413419-0-0	BRACKET, STRAIN RELIEF	1		
5	3612063-00	DECAL, UL	1		
6	3610267-0-0	DECAL, "DANGER HIGH VOLTAGE"	1		
7	1212265-00	POWER CONN RECEPTACLE, 2ØA, 225VAC	7		
8	C-IA-7011052-0-0	MOV ASSY	1		
9	C-IA-7011053-0-0	PILOT LAMP ASSY	3		
10	1211037-02	CIRCUIT BREAKER, 4 POL, 3ØA, 24Ø VAC	1		
11	1211158-00	THERMOSTAT, SPST, FIXED TEMP	1		
12	1212320-00	FILTER	1		
13	1212124-01	CIRCUIT BREAKER, 2 POLE, 2Ø AMP	6		
14	1000034-00	DC PAPER CAPACITOR, 1ØØØ VDC	2		
15	1212266-00	CONTACTOR, 3 POLE, 4ØA, 6ØØ VAC	1		
16	9007035-00	GROMMET, CATERPILLAR	A/R		
17	D-CS-5411522-0-1	PILOT CONTROL	1		
18	1700028-00	POWER CORD, 5 WIRE, 1Ø AWG, (15FT)	A/R		
19	1212410-00	STRAIN RELIEF	1		
20	9009309-00	LOCKNUT, 1/2" PIPE THREAD	1		
21	1212314-00	PLUG, TWIST LOCK, 4 POLE/5 WIRE	1		
22	D-IA-7010966-0-0	HARNESS #1, POWER CONTROL	1		

TITLE

861-D POWER CONTROL ASSY

ASSY NO.
E-UA-861-D-Ø

SIZE CODE
A PL

NUMBER
861-D-Ø

REV.
ECO NO.

SHEET 1 OF 3

DIST.

DEC FORM DEC 16-(325)-1031-N870
DRA 110

DIGITAL EQUIPMENT CORPORATION
MAYNARD, MASSACHUSETTS

PARTS LIST

MADE BY
Tyrone Quilllin

CHECKED
M. Carthy

SECTION
1

DATE
3/11/75

DATE
4/9/75

ISSUED SECT.
1

ENG
Jim Dwyer

PROD
Jim Bonetto

DATE
4/11/75

DATE
4/11/75

ITEM NO.	DWG NO. / PART NO.	DESCRIPTION	QTY	REV.	ECO NO.
23	D-IA-7010967-0-0	HARNESS #3, POWER CONTROL	1		
24	D-IA-7010969-0-0	HARNESS #5, POWER CONTROL	1		
25	D-IA-7010970-0-0	HARNESS #6, POWER CONTROL	1		
26	C-IA-7010968-0-0	HARNESS #8, POWER CONTROL	1		
27					
28	D-IA-7010972-0-0	JUMPER, WIRE (GRN #10-AWG)	1		
29	D-IA-7010972-1-0	JUMPER, WIRE (WHT, #14AWG)	1		
30	D-IA-7010972-2-0	JUMPER, WIRE (WHT, #14AWG)	2		
31	D-IA-7010972-3-0	JUMPER, WIRE (GRN, #14AWG)	1		
32	D-IA-7010972-4-0	JUMPER, WIRE (BLK, #14AWG)	2		
33	9006010-01	SCR, PHL PAN HD, #4-40 x .31 LG	2		
34	9006021-01	SCR, PHL PAN HD, #6-32 x .31 LG	5		
35	9006037-01	SCR, PHL PAN HD, #8-32 x .38 LG	10		
36	9006655-00	WASHER, FLAT, #4	2		
37	9006653-00	WASHER, FLAT, #6	4		
38	9006660-00	WASHER, FLAT, #8	12		
39	9006664-00	WASHER, FLAT, #10	2		
40	9006688-00	WASHER, SPLIT LOCK, #4	2		
41	9007801-00	WASHER, SPLIT LOCK, #6	32		
42	9006690-00	WASHER, SPLIT LOCK, #8	16		
43	9007906-00	WASHER, SPLIT LOCK, #10	2		
44	9007651-00	WASHER, EXT TOOTH LOCK, #10	2		

TITLE

861-D POWER CONTROL ASSY

ASSY NO.
E-UA-861-D-Ø

SIZE CODE
A PL

NUMBER
861-D-Ø

REV.
ECO NO.

SHEET 2 OF 3

DIST.

DEC FORM DEC 16-(325)-1031-N870
DRA 110

