

1st Printing January 1972

Copyright © 1972 by Digital Equipment Corporation

The material in this manual is for informational purposes and is subject to change without notice.

The following are trademarks of Digital Equipment Corporation, Maynard, Massachusetts:

DEC	PDP
FLIP CHIP	FOCAL
DIGITAL	COMPUTER LAB
UNIBUS	

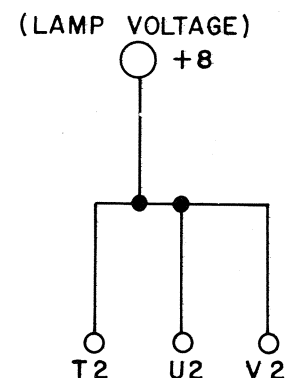
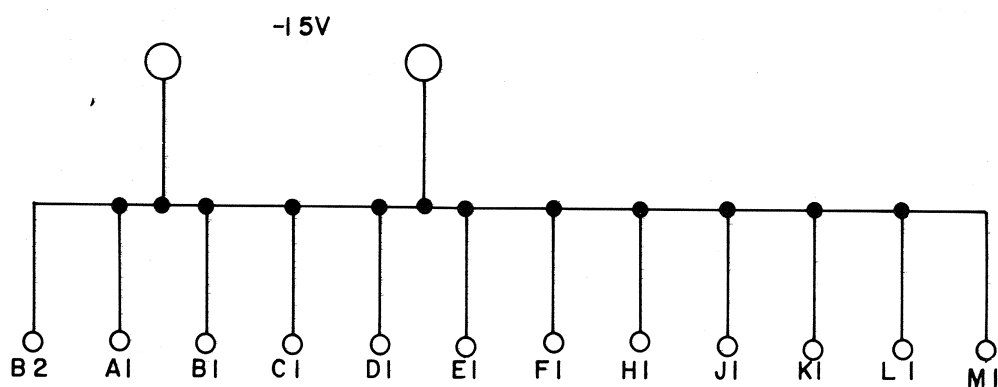
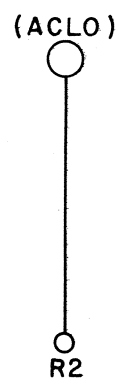
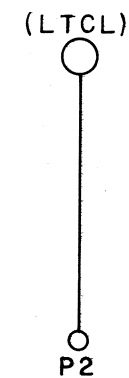
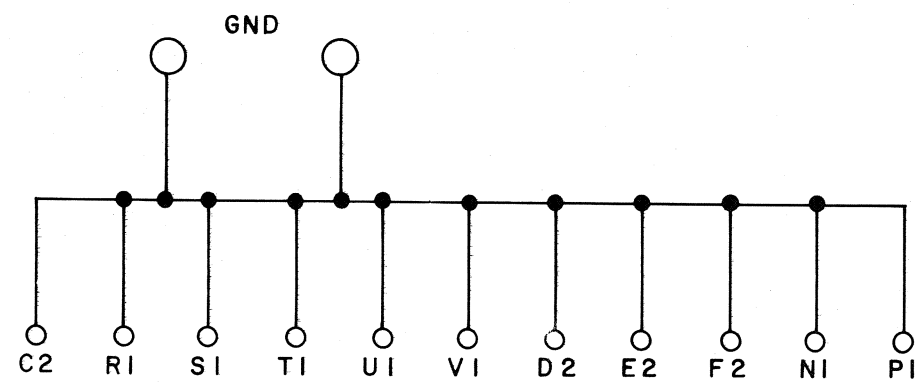
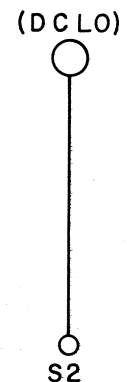
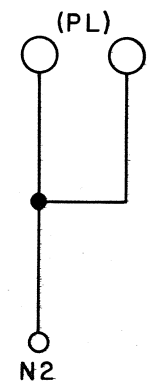
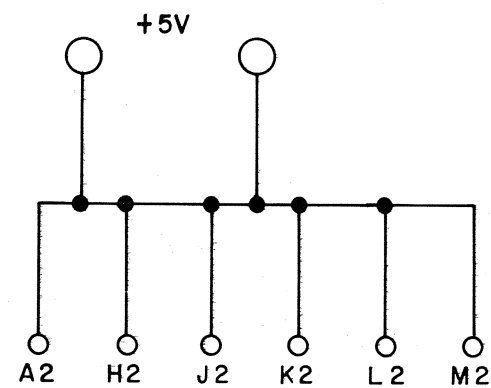
Table of Contents

Drawing Number	Title
D-UA-AA11-D-0	Digital to Analog Control Assy.
D-IC-AA11-D02	Option Cables
D-BS-AA11-D-03	D-A Converters
D-BS-AA11-D-04	Interface
D-IC-AA11-D-05	AA11-D Bus & Power Connections
K-WL-AA11-D-WL	Wire List
D-BS-AA11-E-3	Color Control
D-MU-AA11-0-MU	Module Utilization
D-CS-A614-0-1	12 Bit Polar D/A Connector
B-CS-G772	Digital Power Connector
D-UA-H704-C-0	H704-C Power Supply
C-CS-M105	Address Selector
D-CS-M782	Interrupt Control Module
B-CS-M784	Unibus Receiver
D-CS-M799-0-01	Display Control
C-CS-M920	Internal Bus Connector
D-CS-M7990-0-1	LAB-11 Color Control
D-IA-7007116-0-0	Cable, Power Supply
D-IA-7007122-0-0	Cable Control VR12
D-IA-7007138-0-0	Cable Assy. VT01-A
D-IA-7007139-0-0	Cable Scope RM503
D-IA-7008550-0-0	Display Cable (AA11-E)



REV.	NUMBER	SIZE	CODE
	6772-0-1	B	CS

THIS SCHEMATIC IS FURNISHED ONLY FOR TEST AND MAINTENANCE PURPOSES. THE CIRCUITS ARE PROPRIETARY IN NATURE AND SHOULD BE TREATED ACCORDINGLY. COPYRIGHT 1969 BY DIGITAL EQUIPMENT CORPORATION



NOTE:
○ DESIGNATES EYELETS

REVISIONS CHK CHG NO. REV.	DRN. <i>67 Phoenix</i>	DATE <i>10-16-68</i>	TRANSISTOR & DIODE CONVERSION CHART				digital EQUIPMENT CORPORATION MAYNARD, MASSACHUSETTS	TITLE POWER CONNECTOR G772			
	CHKD <i>P. J. Galt</i>	DATE <i>21 oct</i>	DEC	EIA	DEC	EIA		SIZE B	CODE CS	NUMBER G772-0-1	REV.
	ENG. <i>C. B. Shaw</i>	DATE <i>1-23-70</i>									
	PROD.	DATE									

DEC FORM NO.
DRB 102



5

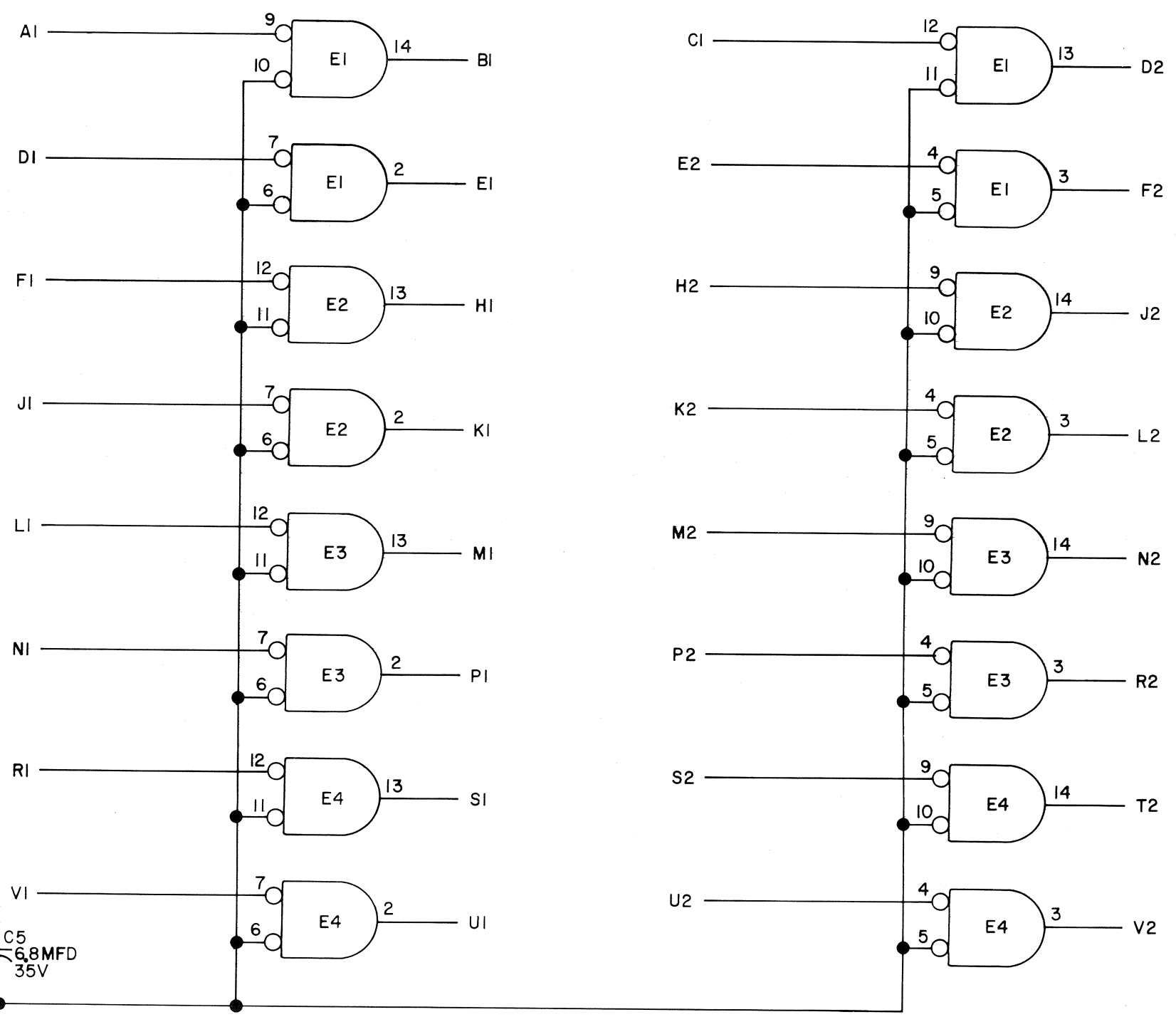
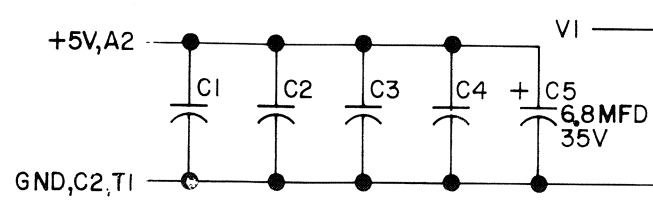
DIST. 324, 434, 4353

PINK

THIS SCHEMATIC IS FURNISHED ONLY FOR TEST AND MAINTENANCE PURPOSES. THE CIRCUITS ARE PROPRIETARY IN NATURE AND SHOULD BE TREATED ACCORDINGLY. COPYRIGHT 1969 BY DIGITAL EQUIPMENT CORPORATION

REV. B
NUMBER M784-0-1
SIZE CODE CS B

UNLESS OTHERWISE INDICATED:
CAPACITORS ARE .01MFD, 100V, 20%
IC'S ARE DEC380
PIN 1 ON EACH IC=GND
PIN 8 ON EACH IC=+5V



REVISIONS				DRN. <i>C. Miley</i>		DATE 11-18-69		TRANSISTOR & DIODE CONVERSION CHART				digital EQUIPMENT CORPORATION MAYNARD, MASSACHUSETTS		TITLE UNIBUS RECEIVERS M784			
CHK	CHG	NO	REV	CHK'D	DATE	DEC	EIA	DEC	EIA	SIZE	CODE			NUMBER	REV.		
			A		1-1-70					B	CS	M784-0-1	B				
			B		3/11/70												
PROD.												PRINTED CIRCUIT REV.		A B C			

DEC FORM NO. DRB 102

MS 641-P4

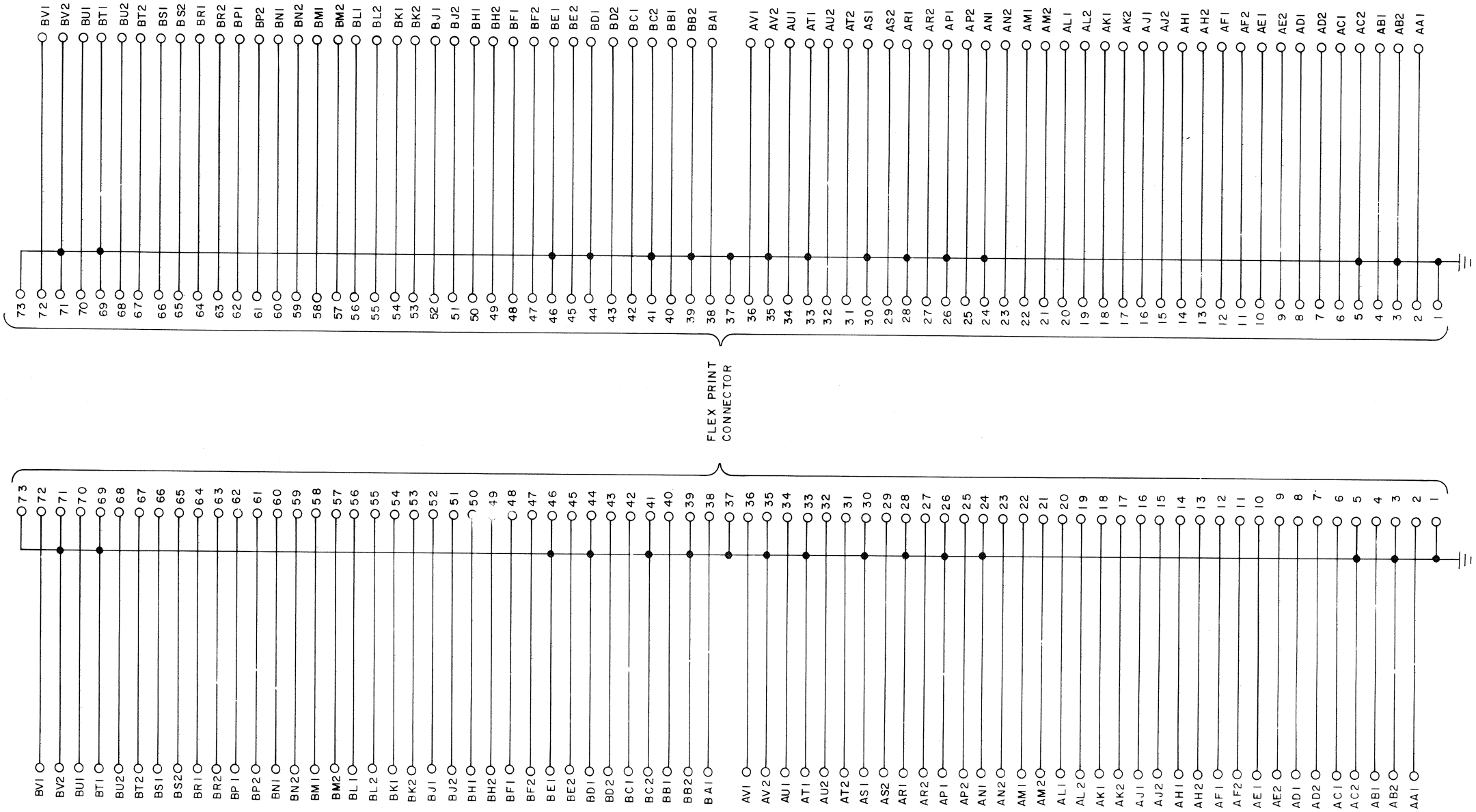
↑

5

DIST. 324.434, 43.3

Pink

THIS SCHEMATIC IS FURNISHED ONLY FOR TEST AND MAINTENANCE PURPOSES. THE CIRCUITS ARE PROPRIETARY IN NATURE AND SHOULD BE TREATED ACCORDINGLY. COPYRIGHT 1969 BY DIGITAL EQUIPMENT CORPORATION



REVISIONS	
CHK	CHG NO REV
00001	A
00002	B

DEC FORM NO. DRC 102

DRN	DATE
11-6-69	
CHK'D	DATE
11-6-69	
ENG	DATE
2-7-74	
PROD	DATE
3-26-76	

TRANSISTOR & DIODE CONVERSION CHART			
DEC		EIA	

digital
EQUIPMENT CORPORATION
MAYNARD, MASSACHUSETTS

TITLE			
INTERNAL BUS CONNECTOR M920			
SIZE	CODE	NUMBER	REV.
C	CS	M920-0-1	B
PRINTED CIRCUIT REV.			
B			

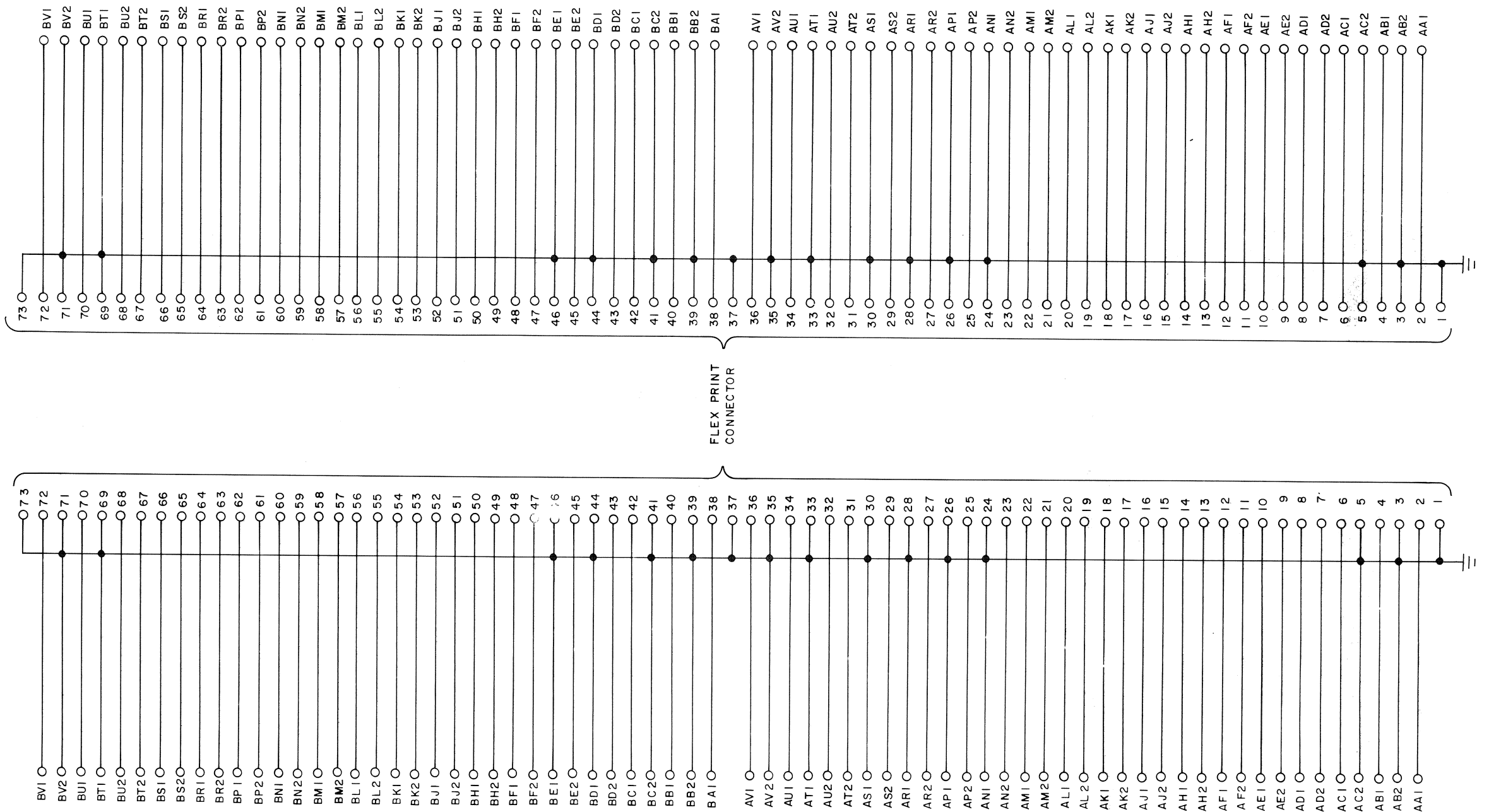
REVISIONS		
CHK	CHG NO.	REV.
13-14	00001	A
14	00002	B

DRN. <i>P. Lamon</i>	DATE <i>11-5-68</i>
CHK'D <i>A. G. G. G.</i>	DATE <i>11-4-68</i>
ENG. <i>C. K. B. B.</i>	DATE <i>3-17-70</i>
PROD. <i>R. B. B.</i>	DATE <i>3/26/70</i>

[illegible]

digital
EQUIPMENT
CORPORATION
MAYNARD, MASSACHUSETTS

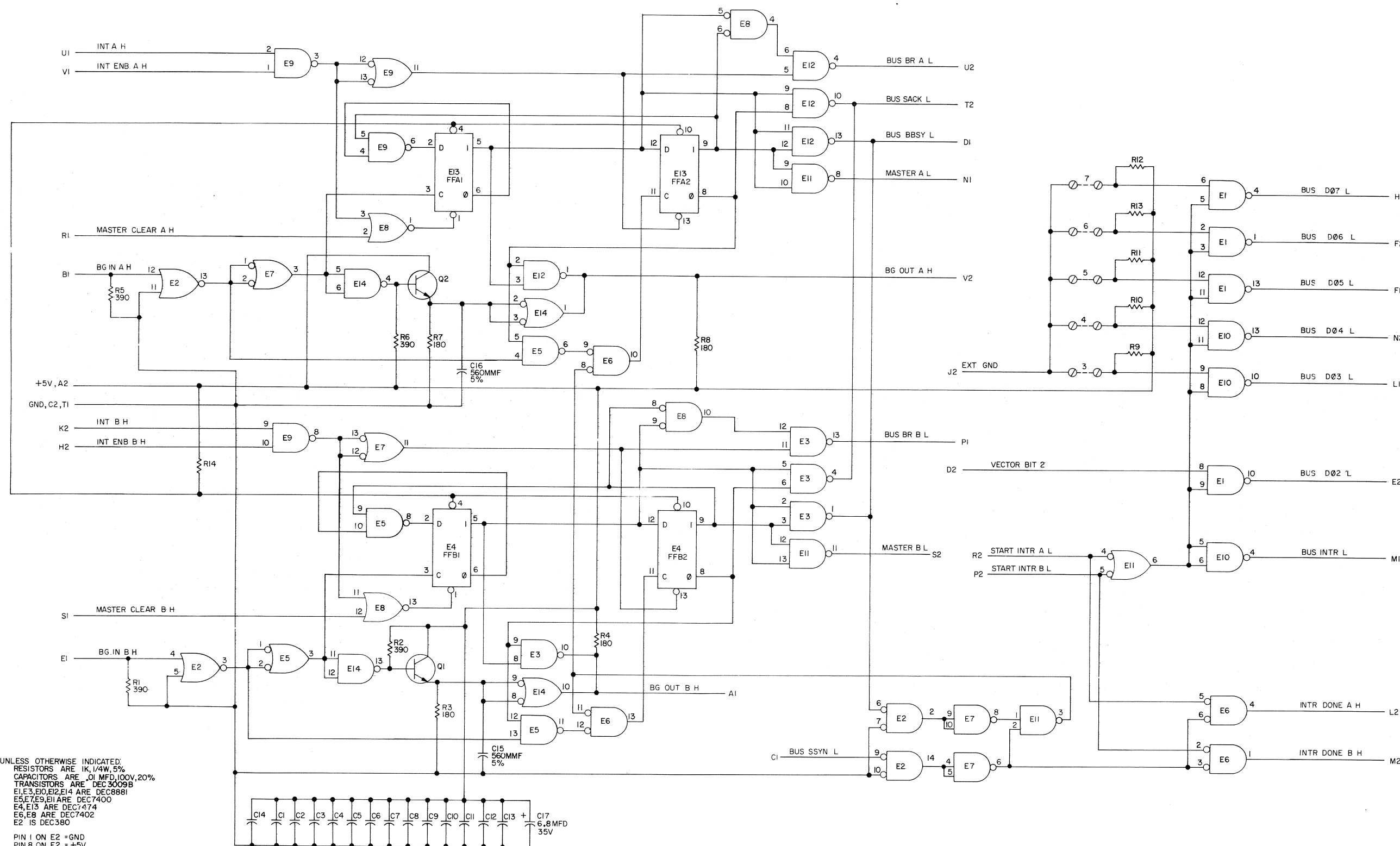
TITLE										INTERNAL BUS CONNECTOR									
										M920									
SIZE		CODE		NUMBER						REV.									
C		CS		M920-0-1						B									
PRINTED CIRCUIT REV.						B													



SIZE	C	CODE	CS	NUMBER	M920-0-1	REV.	B
------	---	------	----	--------	----------	------	---

THIS SCHEMATIC IS FURNISHED ONLY FOR TEST AND MAINTENANCE PURPOSES. THE CIRCUITS ARE PROPRIETARY IN NATURE AND SHOULD BE TREATED ACCORDINGLY. COPYRIGHT 1970 BY DIGITAL EQUIPMENT CORPORATION

1-0-282M
3300010



UNLESS OTHERWISE INDICATED:
RESISTORS ARE 1K, 1/4W, 5%
CAPACITORS ARE .01 MFD, 100V, 20%
TRANSISTORS ARE DEC 3009B
E1, E3, E10, E12, E14 ARE DEC 6881
E5, E7, E9, E11 ARE DEC 7400
E4, E13 ARE DEC 7474
E6, E8 ARE DEC 7402
E2 IS DEC 380

PIN 1 ON E2 = GND
PIN 8 ON E2 = +5V
PIN 7 ON E1, E3 - E14 = GND
PIN 14 ON E1, E3 - E14 = +5V
⊗ = SPLIT LUGS
---- = JUMPERS

REV	DATE	BY	CHKD
1	11-5-70	ALLAN RITCEY	
2	11-5-70		
3	11-5-70		
4	11-5-70		

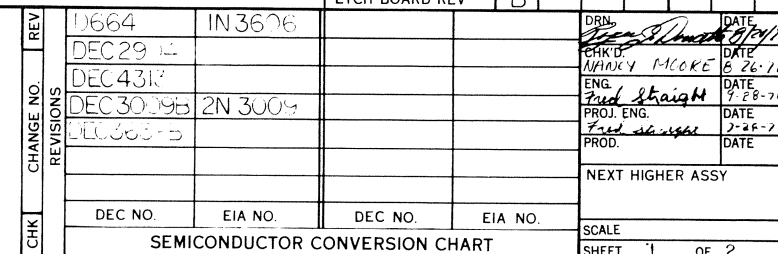
DRN
ALLAN RITCEY
DATE
11-5-70
CHKD
DATE
11-5-70
PROD
DATE
11-5-70


TRANSISTOR & DIODE CONVERSION CHART			
DEC	EIA	DEC	EIA
DEC 3009B	2N3009B		


digital		EQUIPMENT CORPORATION		MAYNARD, MASSACHUSETTS	
SIZE	CODE	NUMBER	REV		
D	CS	M782-0-1	D		
PRINTED CIRCUIT REV					

11-5-70 324,435 3 5

REV D
NUMBER M782-0-1
SIZE CODE D CS



QTY	REF DESIGNATION										DESCRIPTION										PART NO.										ITEM NO.																												
PARTS LIST																																																											
ETCH BOARD REV										B																																																	
										DRAWN <i>W. Moore</i>										DATE <i>5/26/71</i>										<div> DIGITAL EQUIPMENT CORPORATION MAYNARD, MASSACHUSETTS</div> <div>TITLE LAB II COLOR CONTROL</div>																													
										CHK'D <i>W/ANY MOORE</i>										DATE <i>5/26/71</i>																																							
										ENG. <i>Fred Shaign</i>										DATE <i>7/28-71</i>																																							
										PROJ. ENG. <i>Fred Shaign</i>										DATE <i>7-28-71</i>																																							
										PROD.										DATE																																							
										NEXT HIGHER ASSY																																																	
DEC. NO.										EIA NO.																				SIZE CODE D/Cs										NUMBER M7990-0-1										REV. A									
CONVERSION CHART										SCALE										1 OF 2										DIST																													

QTY	REF DESIGNATION										DESCRIPTION										PART NO.				ITEM NO.						
PARTS LIST																															
ETCH BOARD REV										B																					
						DRAWN		DATE		<div> DIGITAL EQUIPMENT CORPORATION MAYNARD, MASSACHUSETTS</div> <div>TITLE</div> <div>LAB II</div> <div>COLOR CONTROL</div>																					
						CHK'D		DATE																							
						W/ANY MOORE		DATE																							
						ENG.		DATE																							
						PROJ. ENG.		DATE																							
						PROD.		DATE																							
										<div>SIZE CODE</div> <div>D/Cs</div> <div>NUMBER</div> <div>M7990-0-1</div> <div>REV.</div> <div>A</div>																					
DEC. NO.		EIA NO.				NEXT HIGHER ASSY																									
CONVERSION CHART										SCALE																					
										SCALE		1		OF		2															

This drawing and specifications, herein, are the property of Digital Equipment Corporation and shall not be reproduced or copied or used in whole or in part as the basis for the manufacture or sale of items without written permission.

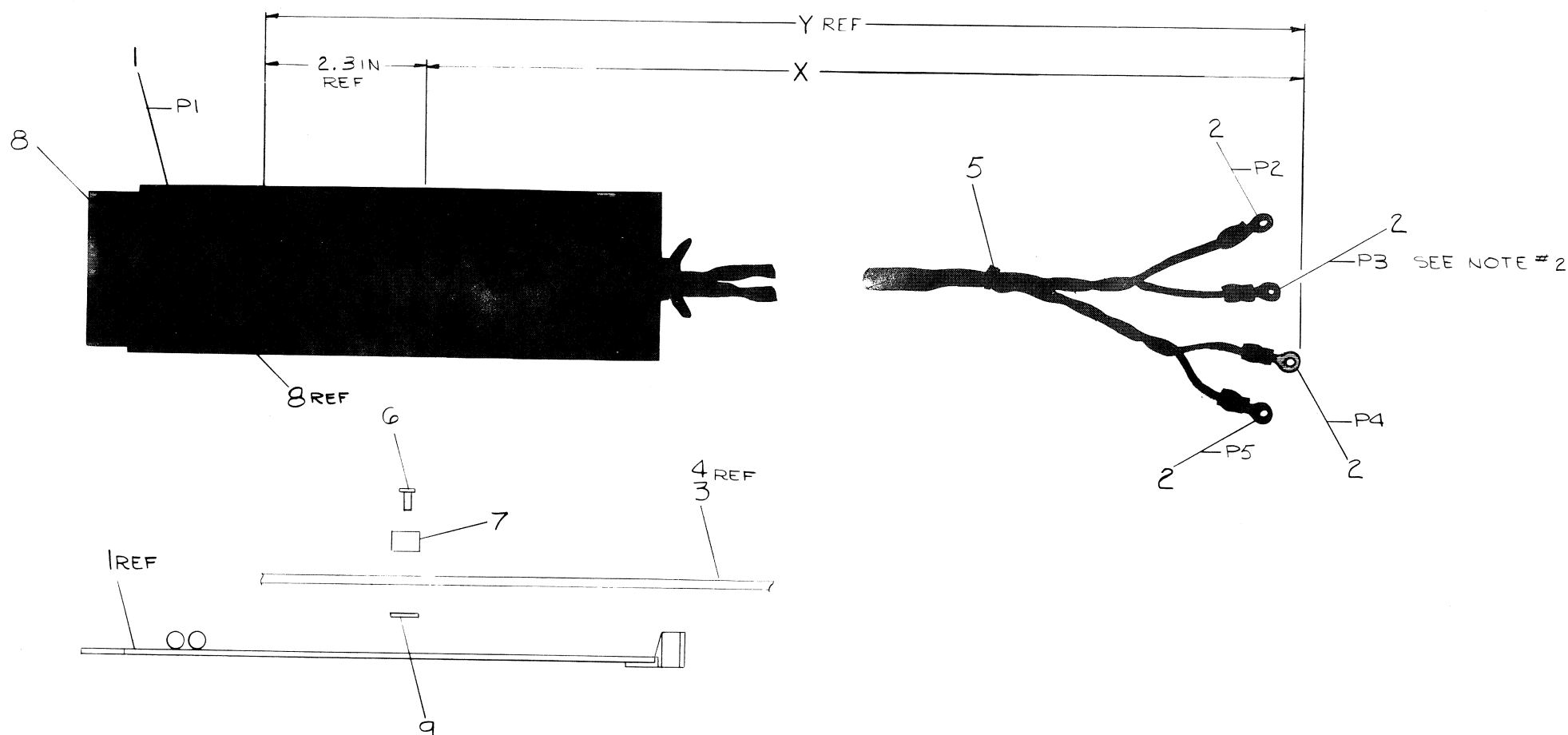
LEGEND		
NUMBER	DIM. X	DIM Y REF
7007116-0	10 FT 4.0 IN \pm 2.0 IN	10 FT. 6.3 IN

WIRE TABLE					
ITEM NO	DESCRIPTION	FROM	TO	CONNECTION WITH	CONNECTION WITH
3	#14 TWP	BRN PI-5	BLU PI-6	SOLDER	P2
4	#14 TWP	BRN PI-12	RED PI-14	SOLDER	P5

EXTERNAL COMPONENTS LIST					
ITEM NO	DESCRIPTION	POL	FROM	TO	POL REMARKS
8	CAPACITOR	POS	PI-1	PI-8	NEG SOLDER
8	CAPACITOR	POS	PI-9	PI-2	NEG SOLDER

NOTES:

- SOLDER #3 (#14 WIRE) TO #1 (CONN CARD), APPLY #9 (TAPE) TO #1 (CONN CARD), ASSEMBLE #6 (EYELET) #7 (CABLE CLAMP) TO #1 (CONN CARD) AFTER SOLDERING.
- LABEL ALL #2 (SOLDERLESS CONN) WITH DESIGNATION SHOWN (P2, P3, P4, P5) USE BRADY MARKERS.



QTY.	DESCRIPTION	PART NO.	ITEM NO.
1	TAPE 4032 1/2 WIDE 3M CC	9007634	4
2	CAP 100NF 20VDC 10% K	1000815	8
1	CABLE CLAMP #944	8-ND-5308301-1	7
2	EYELET A94 STIMPSON	9006741	6
A/R	TIE-WRAP SST 1.5M PANDUIT	9007880	5
A/R	#14 AWG STRD TEF INS TWP BRN/RED	9107440-12	4
A/R	#14 AWG STRD TEF INS TWP BRN/BLU	9107440-16	3
4	CONN #50325 ARLESS	9007927	2
1	CONN 6767	6767	1

FIRST USED ON OPTION/MODEL
AA11-D

DO NOT SCALE DRAWING

UNLESS OTHERWISE SPECIFIED
DIMENSION IN INCHES
TOLERANCES
DECIMALS FRACTIONS ANGLES
 $\pm .005$ $\pm .125$ $\pm 0^{\circ}30'$
FINAL SURFACE QUALITY
REMOVE BURRS AND BREAK SHARP CORNERS

MATERIAL

FINISH

DRN
CHK'D
ENG
PROJ. ENG.
PROD.
DATE
10/1/70
10-25-70
10-26-70
11-12-70

NEXT HIGHER ASSY
D-4A-AA11-D-0

SCALE

SHEET 1 OF 1

PARTS LIST
digital EQUIPMENT CORPORATION
MAYNARD, MASSACHUSETTS

TITLE
CABLE
POWER SUPPLY

SIZE CODE

NUMBER

REV. A


DIST.

REV.	CHANGE NO.	DATE
1	1-26-71	

DEC FORM NO. 100

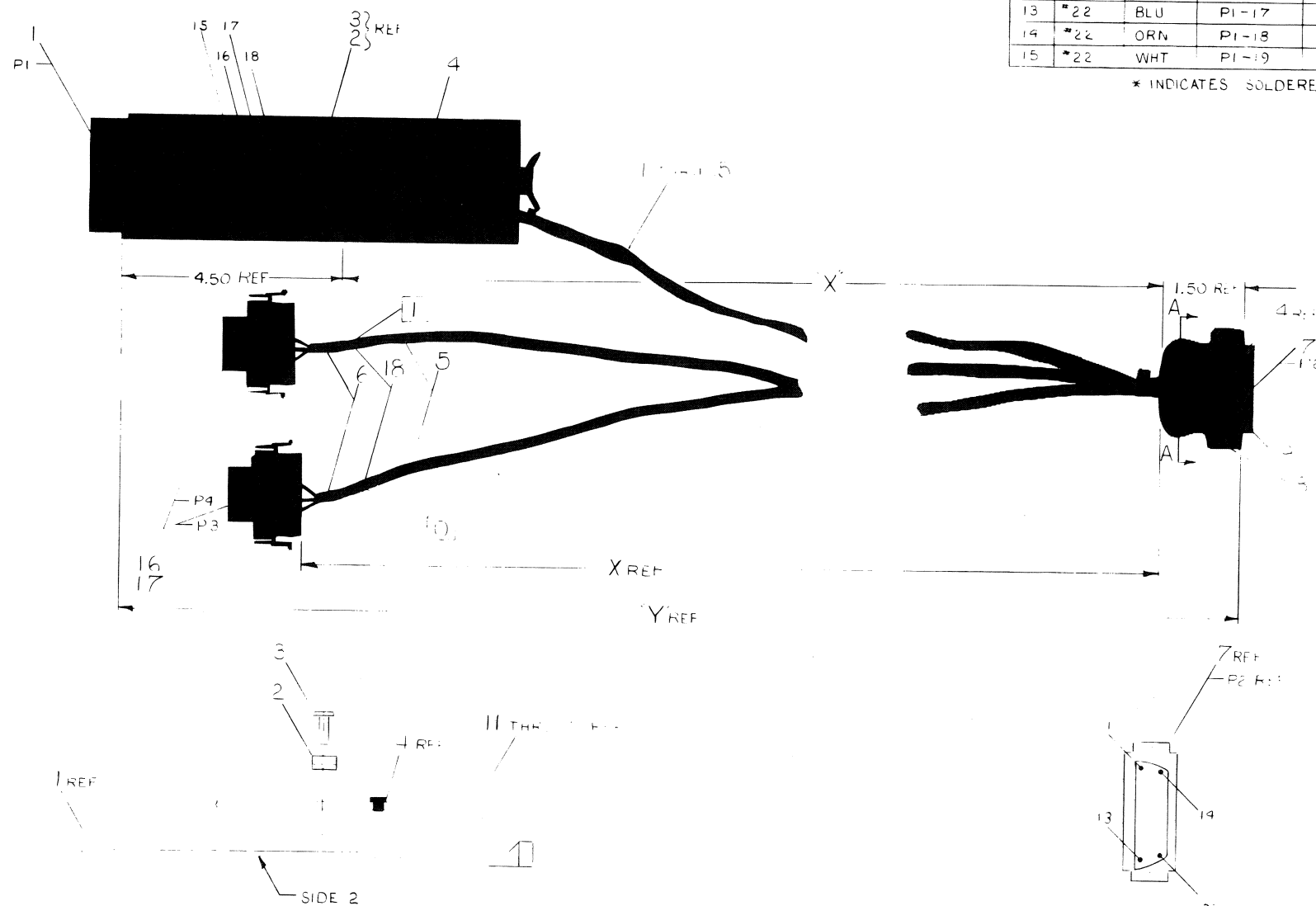
REV. A
NUMBER
DIA7007116-0-0

This drawing and specifications, herein, are the property of Digital Equipment Corporation and shall not be reproduced or copied or used in whole or in part as the basis for the manufacture or sale of items without written permission.

LEGEND		
NUMBER	VARIATION	
	DIM "X"	DIM "Y" REF
7007.59 12	12 FT \pm 3.0	2 FT 6.0 \pm 3.0

WIRE TABLE						
ITEM	DESCRIPTION	FROM			TO	
NO	AWG	COLOR	CONNECTION	WITH	CONNECTION	WITH
3	*20	CLR	P9-5	*	P2-15	*9 f *
5	*20	BLK	P9-4	*	P2-16	↑
5	*20	SHIELD	P4-6	*10 f *	P2-3	
5	*20	SHIELD	P3-6	*10 f *	P2-14	
5	*20	BLK	P3-4	*	P2-2	
5	*20	CLR	P3-5	*	P2-1	
11	*22	BLK	P1-1	*	P2-19	
12	*22	BLK	P1-15	*	P2-17	
	TWT	GRN	P1-16	*	P2-4	
13	*22	BLU	P1-17	*	P2-18	
14	*22	ORN	P1-18	*	P2-7	
15	*22	WHT	P1-19	*	P2-6	*9 f *

* INDICATES SOLDERED CONNECTION



QTY.	DESCRIPTION	PART NO.	ITEM
7/R	MARKERS, BRADY		18
6	PINK MALE	1209378-01	17
2	PLUG MATE-N-LOCK	1209340-01	16
4/R	*22AWG STRD TEF INS WHT	9107350-99	15
4/R	*22AWG STRD TEF INS ORN	9107350-33	14
4/R	*22AWG STRD TEF INS BLU	9107350-66	13
4/R	*22AWG STRD TEF INS TWP BLK/GRN	9107420-05	12
4/R	*22AWG STRD TEF INS BLK	9107350-00	11
4/R	*20 TEFLON THIN WALL TUBING	9107267-05	10
4/R	HEAT SHRINK TUB WHT 1/8 DIA	9107255	9
1	PLUG CINCH HOOD *DB51226-1	1205885	8
1	PLUG CINCH DB-25P	1205886	7
2	HEAT SHRINKABLE TUB 3/16 ODX 9/16 LG	9107305	6
4/R	CABLE BELDEN *8762	9107701	5
4/R	TIE WRAP SST 1.5M PANDUIT	9007880	4
2	EYELET A94 STIMPSON	9006741	3
1	CABLE CLAMP *943	5308301-2	2
1	CONNECTOR BOARD WITH HANDLE	G 767-D	1

DRN. RORBEICH-UD		DATE 10-20-70	PARTS LIST		REV.	
CHK'D. J. TEVIN	DATE 10-27-70	digital EQUIPMENT CORPORATION MAYNARD, MASSACHUSETTS		TITLE CABLE ASSY (VTOI-A)		A
ENG. R. AGNE	DATE 10-30-70					
PROJ. ENG. R. AGNE	DATE 10-30-70	NEXT HIGHER ASSY A-PL AAI-A-Ø		SIZE CODE NUMBER DIA 7007138-0-0		REV. B
PROD. E. HIRSH	DATE 11-2-70					
SCALE NONE		DIST.				
SHEET 1 OF 1						

REVISIONS		
CHK	CHANGE NO.	REV.
GA	AA11A-00002	R
REVISED 4 REDRAWN		
22 Bull. 4-28-71		
R G A N E		
R B Engrd 4-30-71		

FIRST USED ON OPTION/MODEL
AA11-A

DO NOT SCALE DRAWING
UNLESS OTHERWISE SPECIFIED
DIMENSION IN INCHES
TOLERANCES
DECIMALS FRACTIONS ANGLE
 $\pm .005$ $\pm 1/64$ $\pm 0^{\circ}30'$
FINAL SURFACE QUALITY ✓
REMOVE BURRS AND BREAK SHARP CORNERS

MATERIAL	///
FINISH	///

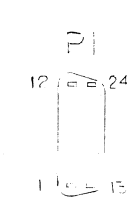
DRN.	R. ROEICH-AUD	DATE	10-26-70
CHK'D.	J. LEVIN	DATE	10-28-70
ENG.	R. BAGNE	DATE	10-30-70
PROJ. ENG.	R. BAGNE	DATE	10-30-70
PROD.		DATE	

PROD.	S. MIRSCH	DATE	12-77
NEXT HIGHER ASSY			
A-PL-AA11-A-Ø			
SCALE	NONE		
SHEET	1	OF	1

digital EQUIPMENT CORPORATION
MAYNARD, MASSACHUSETTS

TITLE	A
CABLE ASSY (VTOI-A)	

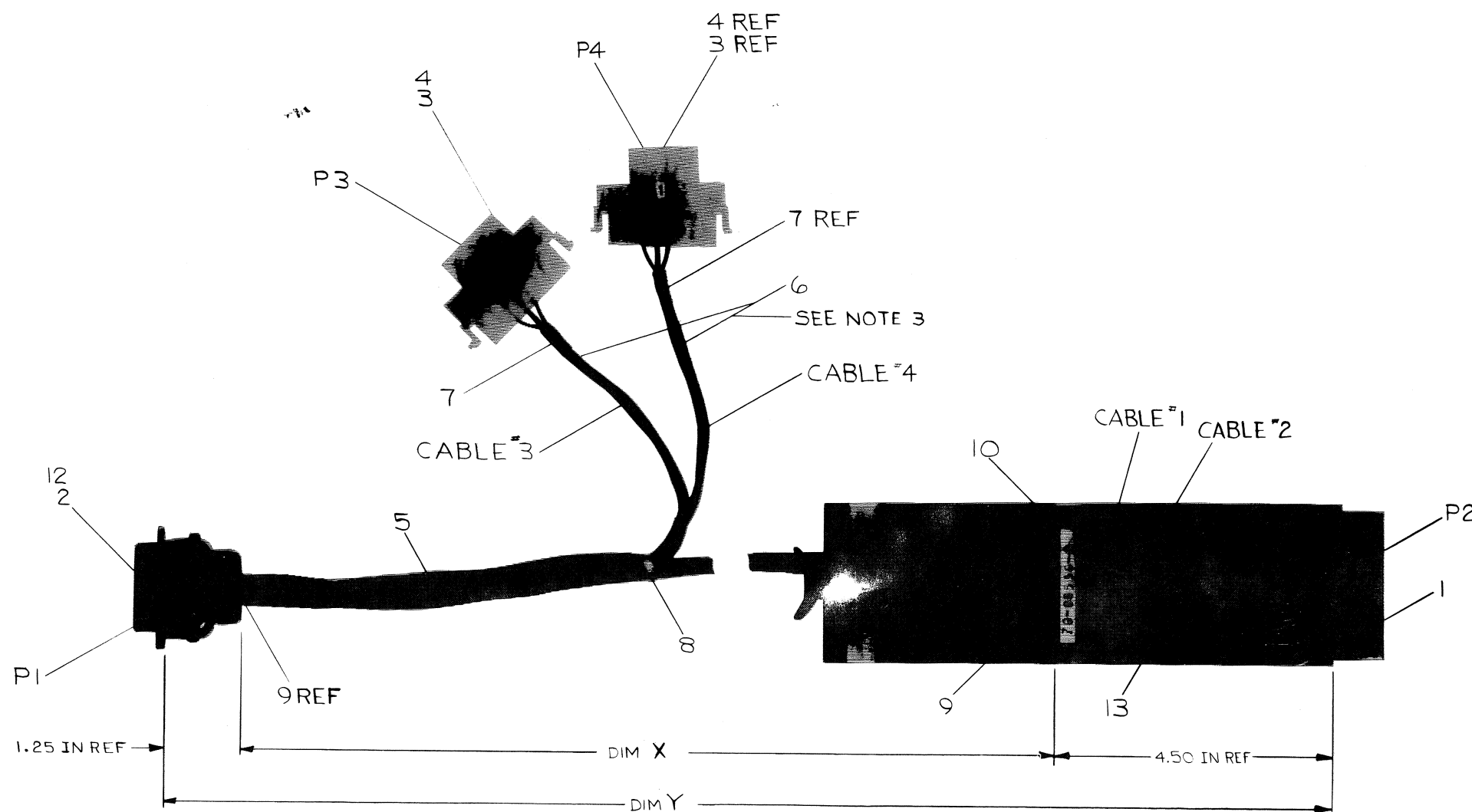
SIZE	CODE	NUMBER	REV.
D	IA	7007138-0-0	B
DIST.			




REVISIONS		CHK	CHANGE NO.	REV.
		<i>BA</i>	AA11E-00002	A
		<i>Ed G. L. L. L. L.</i>	12-23-71	
			F. STRAIGHT	
		<i>Ed G. L. L. L. L.</i>	12-28-71	

2	d	IA	7008550-0-0	REV. A
---	---	----	-------------	--------

1. PUT SHRINKIE (ITEM*12) OVER ALL WIRES SOLDERED TO PLUG (ITEM*2)
2. CABLE TIES (ITEM*8) TO BE EVERY 12" ON CABLE.
3. CABLES*3 & 4 ARE ALSO 9FT LG.



A/R	TUBING, TEF "22 AWG CLR	9107256-10	13
A/R	SHRINKIE 1/8 O.D.	9107255-09	12
2	EYELET "A94 STIMPSON	9006741	11
1	CLAMP, MODULE "943	5308301-2	10
A/R	TAPE "4032 1/2 WIDE	9007834	9
A/R	TIES, CABLE "SST-2B PANDUIT	9007880	8
A/R	SHRINKIE 3/16 O.D X 9/16 LG	9107305-2	7
A/R	CABLE "8762 BELDON	9007701	6
A/R	CABLE "8777 BELDON	9107723	5
6	PIN, MALE MATE-N-LOK	1209378-03	4
2	PIN, HOUSING MATE-N-LOK	1201270	3
1	PLUG, "57-30240 CINCH	1203466	2
1	CONN. BD M957	M957	1

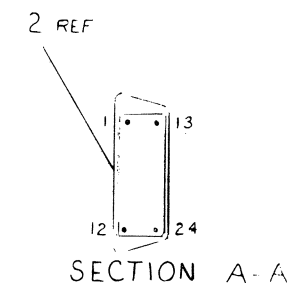
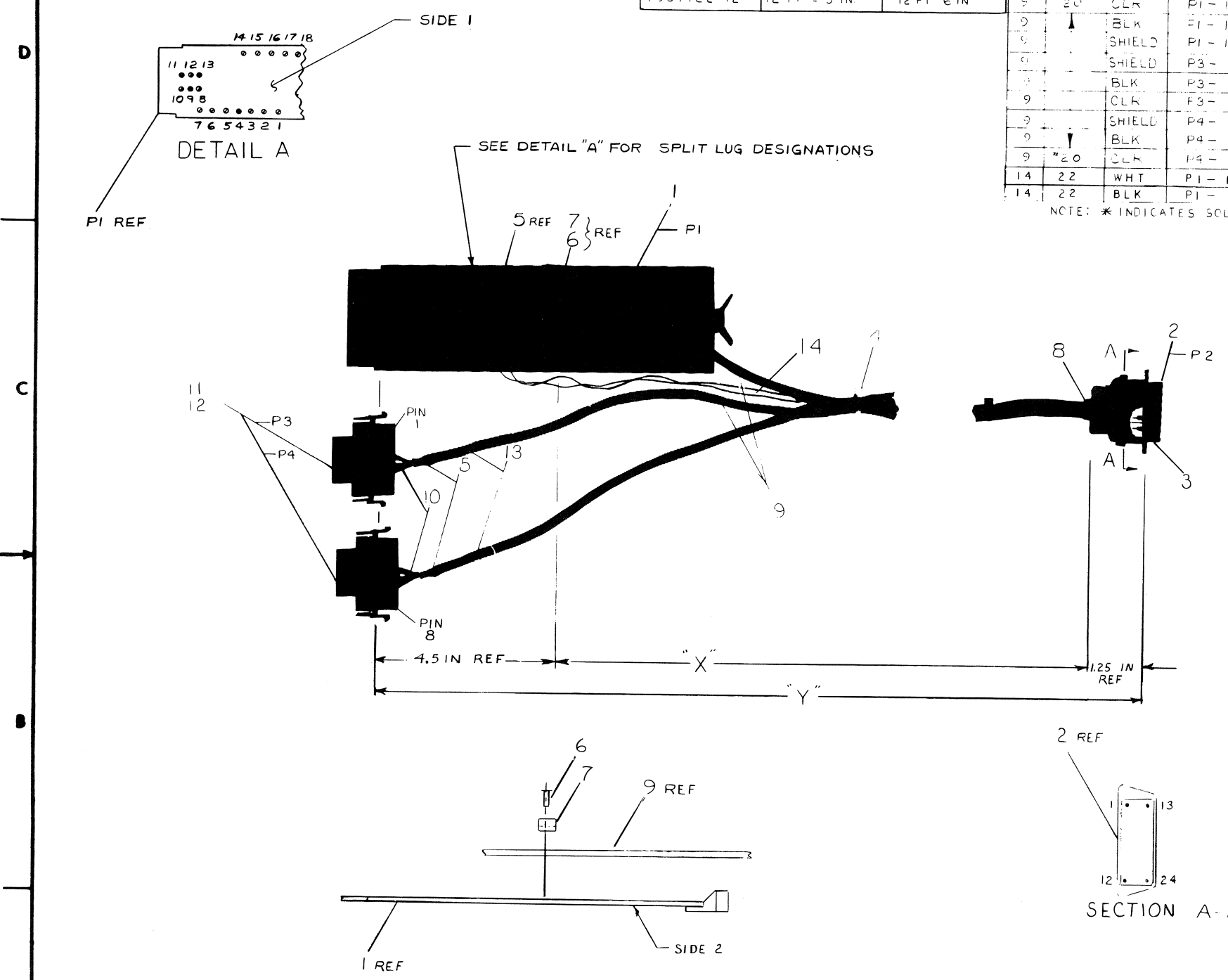
FIRST USED ON OPTION/MODEL		QTY.	DESCRIPTION		PART NO.		ITEM NO.
LAB II		PARTS LIST					
UNLESS OTHERWISE SPECIFIED DIMENSION IN INCHES TOLERANCES		DRN.	DATE				
		CHK'D	DATE				
DECIMALS	ANGLES	ENG.	DATE	TITLE			
XXX .005 XX .02 X .1	+0° 30'	PROJ. ENG.	DATE				
REMOVE BURRS AND BREAK SHARP CORNERS SURFACE QUALITY ✓		PROD.	DATE	DISPLAY CABLE ASSY			
MATERIAL		NEXT HIGHER ASSY.	DATE				
FINISH		SCALE		SIZE CODE	NUMBER		REV.
A-PL-AA11-E-0		NONE		DIA	7008550-0-0		A
SHEET		OF		DIST.			

LEGEND		
NUMBER	VARIATION	
	DIM X	DIM Y
7007122-12	12 FT ± 3 IN	12 FT ± 6 IN

WIRE TABLE						
ITEM NO.	A.A.	DESCRIPTION	FROM		TO	
			CONNECTION	WITH	CONNECTION	WITH
1	20	CLR	P1-14	*	P2-13	*
2		BLK	P1-15	*	P2-14	3 ± *
3		SHIELD	P1-14	GRN TUB ± *		NOTE = 1
4		SHIELD	P3-6	GRN TUB ± *	P2-12	GRN TUB ± 10 ± *
5		BLK	P3-4	*	P2-11	3 ± *
6		CLR	P3-5	*	P2-10	*
7		SHIELD	P4-6	GRN TUB ± *	P2-9	GRN TUB ± 10 ± *
8		BLK	P4-4	*	P2-8	*
9	20	CLR	P4-5	*	P2-7	3 ± *
14	22	WHT	P1-13	*	P2-4	*
14	22	BLK	P1-1	*	P2-5,6	*

NOTE: * INDICATES SOLDERED CONNECTIONS

NOTES
1. CUT BACK AT CABLE SHIELDING



QTY.	DESCRIPTION	PART NO.
14	#22 BLK & WHT TWP	9107420-09
13	MARKERS, BRADY 1/8" Ø	
12	PINS	1209378-01
11	PLUG MATE-N-LOCK	1209390-01
10	#22 TEFLON THIN WALL TUBING	9107256-05
9	CABLE BELDEN #8762	9007701
8	TAPE #4032 1/2" WIDE	9007834
7	CABLE CLAMP #943	5308301-2
6	EYELET #44 STIMPSON	9006791
5	HEAT SHRINKABLE TUB. 3/16" OD X 1/16" LG	9107305-02
4	TIE WRAP SST 1.5M PANDUIT	9007880
3	HEAT SHRINKABLE TUB. 1/8" OD	9107255-09
2	CONN PLUG 24 PIN CINCH	1203466
1	CONNECTOR BOARD WITH HANDLE	G 767

REV	DATE	BY	APP
1	4-23-71	R. GAGNE	
2	4-26-71	R. GAGNE	
3	6-24-71	R. GAGNE	
4	7-8-71	R. GAGNE	

FIRST USED ON OPTION/MODEL
AA11-C

UNLESS OTHERWISE SPECIFIED
DIMENSIONS IN INCHES
TOLERANCES
ANGLES
FINISH SURFACE QUALITY
REMOVE BURRS AND SHARP EDGES

EQUIPMENT CORPORATION
CABLE, CONTROL
VR12

SCALE NONE
NEXT HIGHER ASSY
A-PL-AA11-C-Ø