

"THIS DRAWING AND SPECIFICATIONS, HEREIN, ARE THE PROPERTY OF DIGITAL EQUIPMENT CORPORATION AND SHALL NOT BE REPRODUCED OR COPIED OR USED IN WHOLE OR IN PART AS THE BASIS FOR THE MANUFACTURE OR SALE OF ITEMS WITHOUT WRITTEN PERMISSION. COPYRIGHT © 1979 DIGITAL EQUIPMENT CORPORATION."

SWITCH LOW PAPER TAPE OPTION
SWITCH LOW PAPER TAPE OPTION (ARRANGEMENT)
CABLE, RECEPTACLE ASSY

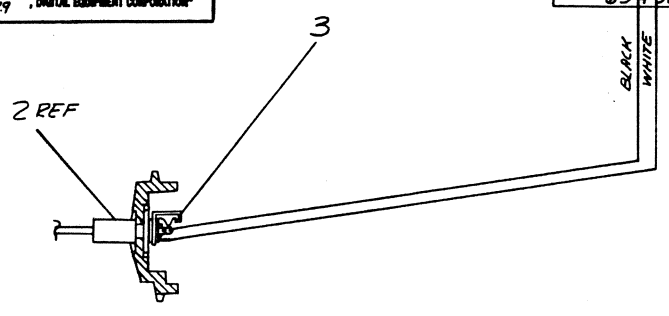
PRINT SET ORDER NO.
MP00696

DRB 124

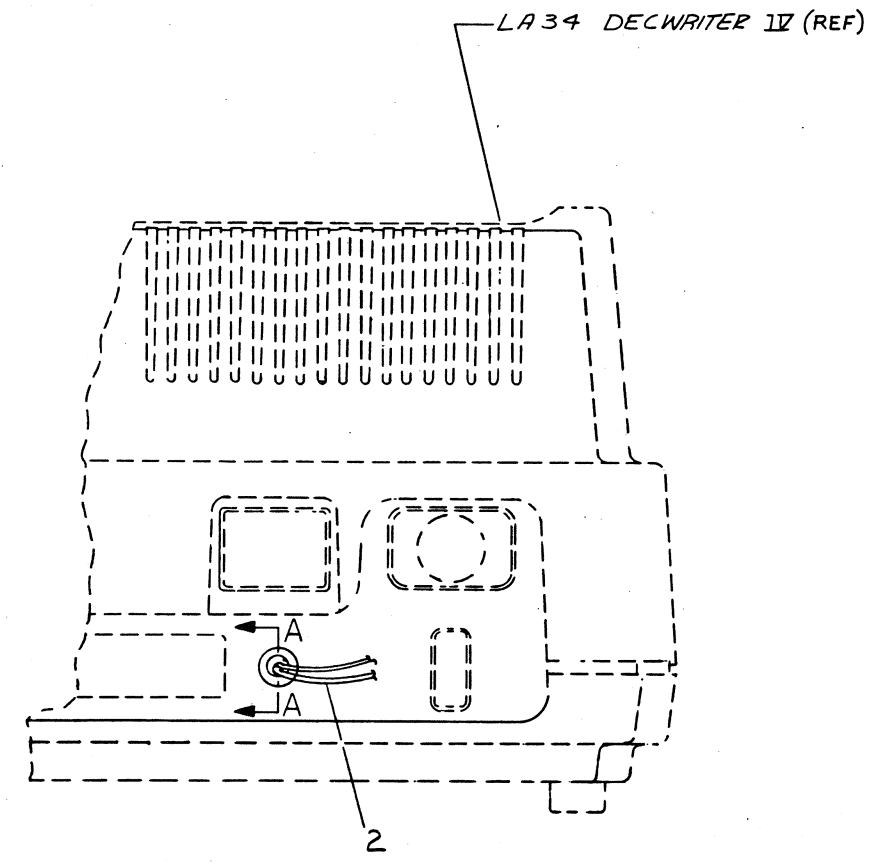
THIS DRAWING AND SPECIFICATIONS, HEREIN, ARE THE PROPERTY OF DIGITAL EQUIPMENT CORPORATION AND SHALL NOT BE REPRODUCED OR COPIED OR USED IN WHOLE OR IN PART AS THE BASIS FOR THE MANUFACTURE OR SALE OF ITEMS WITHOUT WRITTEN PERMISSION.
COPYRIGHT © 1979, DIGITAL EQUIPMENT CORPORATION

JB ***** LOGIC BOARD
654321

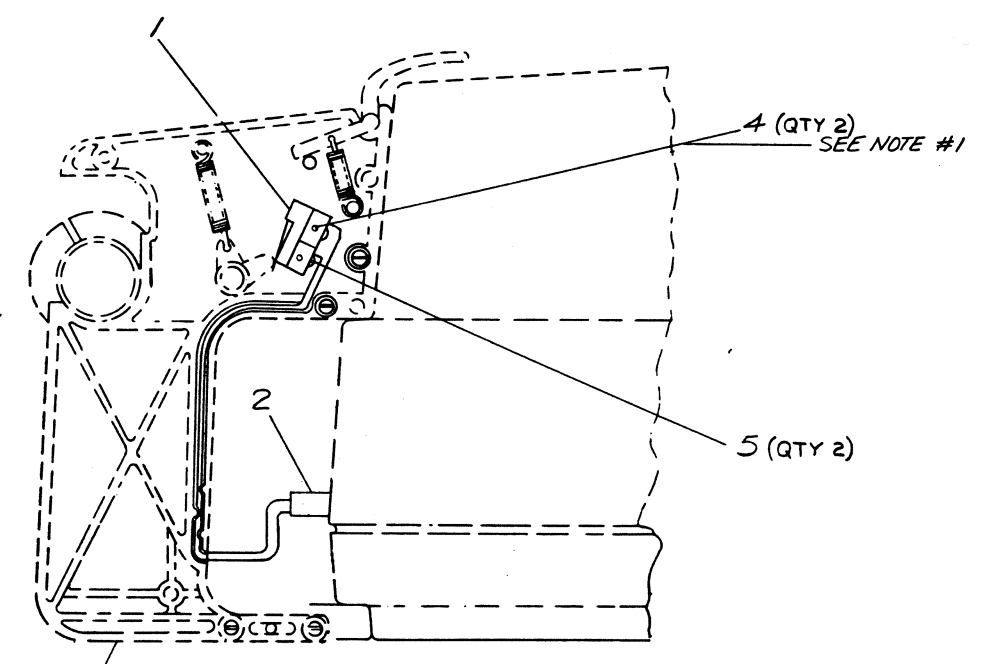
NOTES:
1. ITEM # 4 ASSEMBLED FROM FARSIDE
2. PARTS LIST SHOWN FOR ORIENTATION OF LAX34-LL ONLY.



SECTION A-A



VIEW SHOWING PAPER HOLDER REMOVED

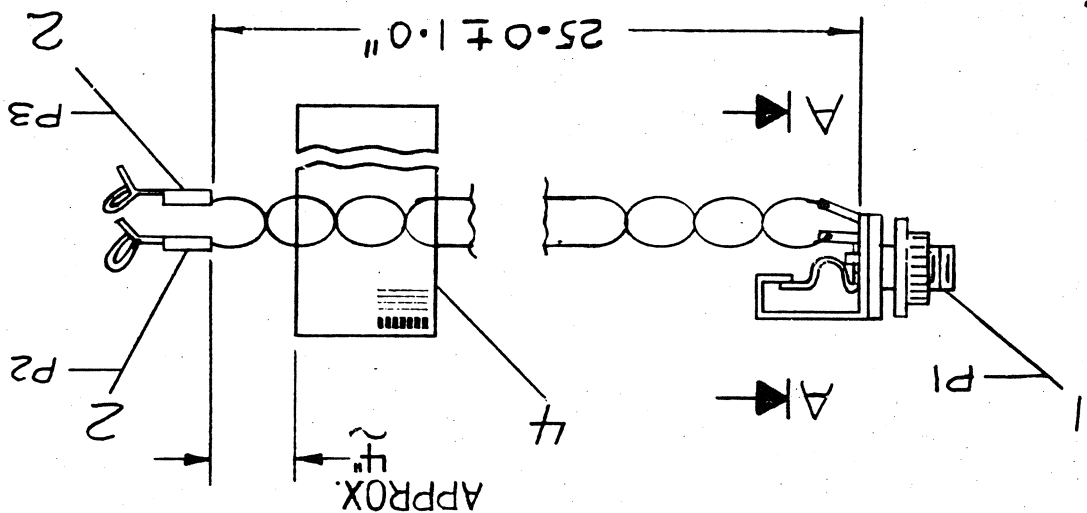
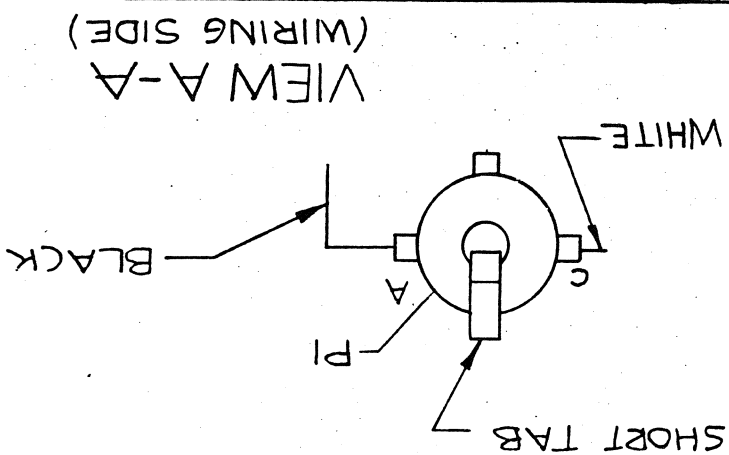


PAPER HOLDER ASSY (REF)

A/R	NUT, SPEED, FLAT	9010069-00	5
N/R	SCR FLT HD #2 - 56 X .43	9000039-09	4
A/R	CABLE RECEPTACLE ASSY	B-1A-7016279-0-0	3
A/R	CABLE ASSY	1215667-00	2
A/R	SWITCH, MICRO SPST N.O.	1215783-00	1

QUANTITY & VARIATION		DESCRIPTION		DWG/PART NO.	ITEM NO.
UNLESS OTHERWISE SPECIFIED DIMENSIONS ARE IN INCHES					
ANGLES 30° 30'		CLASS OF ACCURACY (CHECK ONE)		NOMINAL DIMENSION RANGE INCHES	
SURFACE QUALITY IN		MEDIUM		OVER 0 TO 1.2 OVER 1.2 TO 4.0 OVER 4.0 TO 12.0 OVER 12.0 TO 40.0 OVER 40.0 TO 80.0	
MICROINCHES		PREFERRED		±.004 ±.008 ±.012 ±.016 ±.024 ±.04	
THIRD ANGLE PROJECTION		FIRST USED ON		LA 34/38	
REMOVE BURRS AND BREAK SHARP CORNERS		TITLE		SWITCH, LOW PAPER OPTION	
DO NOT SCALE DWG		NEXT HIGHER ASSY.		B-DD-LA 34-LL	
MATERIAL		SCALE		SIZE CODE D	
FINISH		SHEET 1 OF 1		NUMBER LA X 34-LL-2	

DIGITAL
LA X 34-LL-2



WIRE TABLE					
ITEM	DESCRIPTION	FROM	TO	NO	
		CONN	WITH	CONN	WITH
		PI-A	SOLDER	P2	ITEM 2
3	24	WHITE	PI-C	P3	ITEM 2

1. ASSEMBLE I.D. LABEL, #36-16073-00, TO CABLE AS SHOWN BELOW.

NOTE

1	I.D. CABLE LABEL	36-16073-00	4
2	TERMINAL CRIMP	1214979-00	2
3	WIRE 24 AWG TWP BLK/WHT	9107592-09	3
4	CONN. JACK	1215474-00	1