



TITLE LA34 POWER SUPPLY		SIZE D	CODE CS	NUMBER 5413325-0-1		REV. K
SCALE 1/1	SHEET 2 OF 2	DIST.				

LINE	ITEM	DOCUMENT NUMBER

QTY	DESCRIPTION	UNIT	QTY	DESCRIPTION	UNIT
1	L234 POWER SUPPLY		1	C22	
2	1000009-00		1	C28,C33	
3	1000042-00		2	C18	
4	1000055-00		1	C13	
5	1000061-00		1	C25	
6	1000075-00		1	C35	
7	1001610-01		1	C27	
8	1001796-00		1	C26	
9	1002839-00		1	C17	
10	1005507-00		1	C19	
11	1011847-01		1	C3	
12	1011847-02		1	C5	
13	1011849-01		1	C4	
14	1013280-00		1	C24	
15	1014265-00		1	C7,C14,C15,C16,C21,C29,C30,C31,	
16	1014265-01		12	C32,C34,C36,C20	
17	1015466-00		1	C6	
18	1015377-00		2	C9,C11	
19	1015519-00		2	C1,C2	
20	1100114-00		3	D4,D20,D27	
21	1105796-00		2	D3,D13	
22	1105873-00		1	D19	
23	1112594-01		2	D21,D22	
24	1112594-02		2	D9,D10	
25	1112595-01		6	D1,D2,D23-D25,D26	
26	1112595-02		2	D11,D14	
27	1113123-00		1	D12	
28	1114377-00		1	D18	
29	1114893-00		1	D15	

REVISION HISTORY
BASIC PART NO: 5413325

1B SECTION, VARIATION INDEX ICHK'D: T. SHETRAWSKI I DATE: 7-JUN-78

DB IPN003	ID	1	[CB]	
DB IPN003	ID	1	[CB]	

[illegible]

66C IPN007	IJ	CFJ	IRPSP,ENG.: R MACKENZIE	DATE: 7-JUN-78	SIZE CODE NUMBER	REV
------------	----	-----	-------------------------	----------------	------------------	-----

DATE: 7-11-78 K 1 P1 5413325-0-NBP

ASSEMBLY NUMBER:	TOP DOCUMENT NUMBER:	FILE NAME:	EDIT #

	[E-0A-5413325-0-0]	I8-100-5413325-0-0	133259J.FLS	32
--	--------------------	--------------------	-------------	----

THIS DRAWING AND SPECIFICATIONS HEREIN, ARE THE PROPERTY OF DIGITAL EQUIPMENT CORPORATION AND SHALL NOT BE REPRODUCED OR COPIED OR USED IN WHOLE OR IN PART AS THE BASIS FOR THE MANUFACTURE OR SALE OF ITEMS WITHOUT WRITTEN PERMISSION. COPYRIGHT (C) 1981, DIGITAL EQUIPMENT CORPORATION.

LINE	ITEM	DOCUMENT NUMBER	PART NUMBER	DESCRIPTION	QTY	PER VARIATION	REFERENCE DESIGNATOR
					00		
30	30		1115182-00	1N 5626 PIV=600 I= 3A	4		D5-D8
31	31		1115272-00	UES1303 PIV=150 I=6A	2		D16,D17
32	32		1115369-00	VM 18 PIV=100 I=1A	1		E1
33	33		1213426-04	HEAT SINK TO-3 CLEAR ANODIZED	1		
34	34		1214789-00	INSERT,THREADED 6-32 ,BRASS,ELEC	2		
35	35		1215307-00	HEADER 9POS RIGHT ANGLE	1		J2
36	36		1215307-01	HEADER 5POS RIGHT ANGLE	1		J1
37	37		1216064-00	SW,LOCK 2P RIGHT ANGLE TER	1		SW1
38	38		1300219-00	68.0 .25 W 5.0 % CC	1		R24
39	39		1300295-00	330.0 .25 W 5.0 % CC	1		R20
40	40		1300365-00	1.0 K .25 W 5.0 % CC	1		R11
41	41		1300447-00	4.70 K .25 W 5.0 % CC	1		R37
42	42		1300479-00	10.0 K .25 W 5.0 % CC	1		R18
43	43		1301317-00	10.0 .25 W 5.0 % CC	1		R22
44	44		1314675-00	1.0 K 3.0 W 5.0 % WW	1		R7
45	45		1301546-00	22.0 2.0 W 5.0 % CC	2		R38,R40
46	46		1301927-00	560.0 2.0 W 5.0 % CC	1		R36
47	47		1302395-00	56.0 K .25 W 5.0 % CC	1		R12
48	48		1302514-00	39.0 K .25 W 5.0 % CC	1		R39
49	49		1303114-00	1.0 K .25 W 1.0 % RN55D-F10	10		R15,R16,R26,R27,R32,R33,R42,R43,
						CONT	R50,R51
50	50		1302612-00	1.78 K .25 W 1.0 % RN55D-F10	1		R17
51	51		1305123-00	215.0 .25 W 1.0 % RN55D-F10	1		R14
52	52		1305265-00	39.20 K .25 W 1.0 % RN55D-F10	1		R28
53	53		1305405-00	24.90 K .25 W 1.0 % RN55D-F10	1		R34
54	54		1309094-00	100.0 5.0 W 5.0 % WW	1		R21
55	55		1309405-00	68.0 .50 W 5.0 % CC	1		R13
56	56		1313752-00	15.0 K .25 W 1.0 % RN55D-F10	1		R19
57	57		1309595-00	1.0 M .25 W 5.0 % CC	4		R25,R30,R44,R47
58	58		1310876-03	.05 5.0 W 3.0 % WW	3		R8-R10
59	59		1312618-00	16.90 K .25 W 1.0 % RN55D-F10	1		R41
60	60		1312655-00	180.0 5.0 W 5.0 % WW	3		R23,R48,R49
61	61		1312925-00	169.0 K .25 W 1.0 % RN55D-F10	1		R46
62	62		1313191-00	1.0 K 9.0 W 5.0 % WW	1		R5
63	63		1314253-00	240.0 K .25 W 5.0 % CC	4		R29,R31,R35,R45
64	64		1314270-00	5.0 15.0 % NTC THERM	2		R1,R2
65	65		1314350-00	1.0 2.0 W10.0 % FUSE	1		R6
66	66		1315586-00	68.0 K 1.0 W 5.0 % CC	2		R3,R4
67	67		1510706-00	XA 55 PNP 500MW SI 60 50 P	1		Q2
68	68		1512782-00	NPN 100W SI325 15	1		Q1
69	69		1514271-01	D 44Q5 NPN 31W SI225 30	1		Q3
70	70		1614778-00	XFMR P-AB S=6.0@ 100MA	1		T1
71	71		1612920-02	PULSE XFMR 30KHZ VT61	1		T2
72	72		1615559-01	XFMR P=240/360DC 54-13325	1		T3
73	73		1910282-00	301AN OP AMP	1		E3
74	74		1912048-01	*** THIS ITEM IS NOT USED ***	-		
75	75		1912108-00	339 VOLT CMPRTR,QUAD	1		E4
76	76		1914392-00	556 TIMER-DUAL	1		E2

D	I	G	I	T	A	L	TITLE	SECTION A OF A	SIZE	CODE	DOCUMENT NUMBER	REV
							H7834 POWER SUPPLY MODULE					
									K	PL	5413325-0-DBP	J

QTY PER VARIATION
REFERENCE DESIGNATOR

LINE ITEM DOCUMENT NUMBER
PART NUMBER

77	1914517-01	*** THIS ITEM IS NOT USED ***	
78	7015917-00	HEAT SINK ASSY	Z1
79	7015917-01	HEAT SINK ASSY	Z2
80	9006023-01	SCREW,PAN,PHIL 6-32X 7/16 SS	
81	9009798-00	SPACER, CERAMIC, .186 ODX.078 ID	14
82	9009798-01	*** THIS ITEM IS NOT USED ***	
83	9009798-02	SPACER, CERAMIC, .186 ODX.078 ID	2
84	9009882-00	WASHER, LOCK, INT TOOTH #6	2
85	9009676-00	TERM LUG 1POS SOLDER	1
86	1309419-00	19.60 K .25 W 1.0 % RN55D-F10	1
87	1000020-00	*** THIS ITEM IS NOT USED ***	
88	1310147-00	.15 2.0 W10.0 % W	1
89	1109991-01	4M6.8A21 VZ= 6.8 1% .40W	1
90	1512790-00	D 44C12 NPN 30W SI	1
91	1012607-04	270 MFD 40V+100-10% AL EL	1
92	1000024-00	470.0 MMF 100V 5%200PFM MICA	1
C23			
C8			
Q4			
D28			
R53			
R52			

D I G I T A L
TITLE

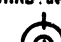
H7834 POWER SUPPLY MODULE

SECTION A OF A

SIZE CODE
DOCUMENT NUMBER
REV
K PL 5413325-0-DBP
J

C FORM NO
 C 100-C

THIRD ANGLE PROJECTION



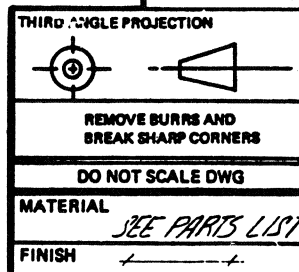
**REMOVE BURRS AND
BREAK SHARP CORNERS**

DO NOT SCALE DWG

MATERIAL *SEE PARTS LIST*

FINISH *+ + +*

1. ARROW OR INDEX MARK ON
ITEM "1" INDICATES CONTACT
POSITION "1"



DESCRIPTION		DWG. PART NO.		ITEM NO.			
UNLESS OTHERWISE SPECIFIED DIMENSIONS ARE IN INCHES							
ANGLES 20° 30'		NOMINAL DIMENSION RANGE INCHES					
SURFACE QUALITY IN	CLASS OF ACCURACY (CHECK ONE)	OVER 0 TO 0.2	OVER 0.2 TO 1.2	OVER 1.2 TO 4.0	OVER 4.0 TO 12.0	OVER 12.0 TO 40.0	OVER 40.0 TO 80.0
	MEDIUM <input type="checkbox"/>	±.004	±.006	±.012	±.016	±.024	±.04
	MICROMACHES <input checked="" type="checkbox"/>	PREFERRED <input type="checkbox"/>	±.012	±.016	±.026	±.04	±.062
DRN <i>Donna Velez</i> 1/11/78		FIRST USED ON		<i>LA.34</i>		digital	
CHK'D <i>D. 260</i> 1/11/78		TITLE		CABLE KEYBOARD ASSY			
ENG <i>B.F. Donahue</i> 2/24/78							
PROJ. ENG. <i>J.M. [illegible]</i> 10/19/78							
PROD. <i>[illegible]</i> 10/19/78							
NEXT HIGHER ASSY.							
D-AD-7C15514-0-0		SIZE	CODE	NUMBER		REV.	
SCALE <i>1" = 1"</i>		C	IA	7015741-C-0		B	
SHEET / OF /		DIS.					

DESCRIPTION		DWG. PART NO.				ITEM NO.		
UNLESS OTHERWISE SPECIFIED DIMENSIONS ARE IN INCHES								
ANGLES 20° 30'		CLASS OF ACCURACY	NOMINAL DIMENSION RANGE INCHES					
SURFACE QUALITY IN	(CHECK ONE)		OVER 0 TO 0.2	OVER 0.2 TO 1.2	OVER 1.2 TO 4.0	OVER 4.0 TO 12.0	OVER 12.0 TO 40.0	OVER 40.0 TO 80.0
		MEDIUM <input type="checkbox"/>	±.004	±.006	±.012	±.016	±.024	±.04
		MICROMACHES <input checked="" type="checkbox"/>	PREFERRED <input type="checkbox"/>	±.012	±.016	±.026	±.04	±.062
DRN <i>Donna Velez</i> 1/11/78		FIRST USED ON				<i>LA.34</i> digital		
CHK'D <i>D. 26a</i> 1/11/78		TITLE		CABLE KEYBOARD ASSY				
ENG <i>B.F. Donahue</i> 2/24/78								
PROJ. ENG. <i>J.M. [unclear]</i> 10/19/78								
PROD. <i>[unclear]</i> 10/19/78								
NEXT HIGHER ASSY.								
D-AD-7C15514-0-0		SIZE	CODE	NUMBER			REV.	
SCALE <i>1" = 1"</i>		C	IA	7015741-0-0			B	
SHEET / OF /		DIS.						

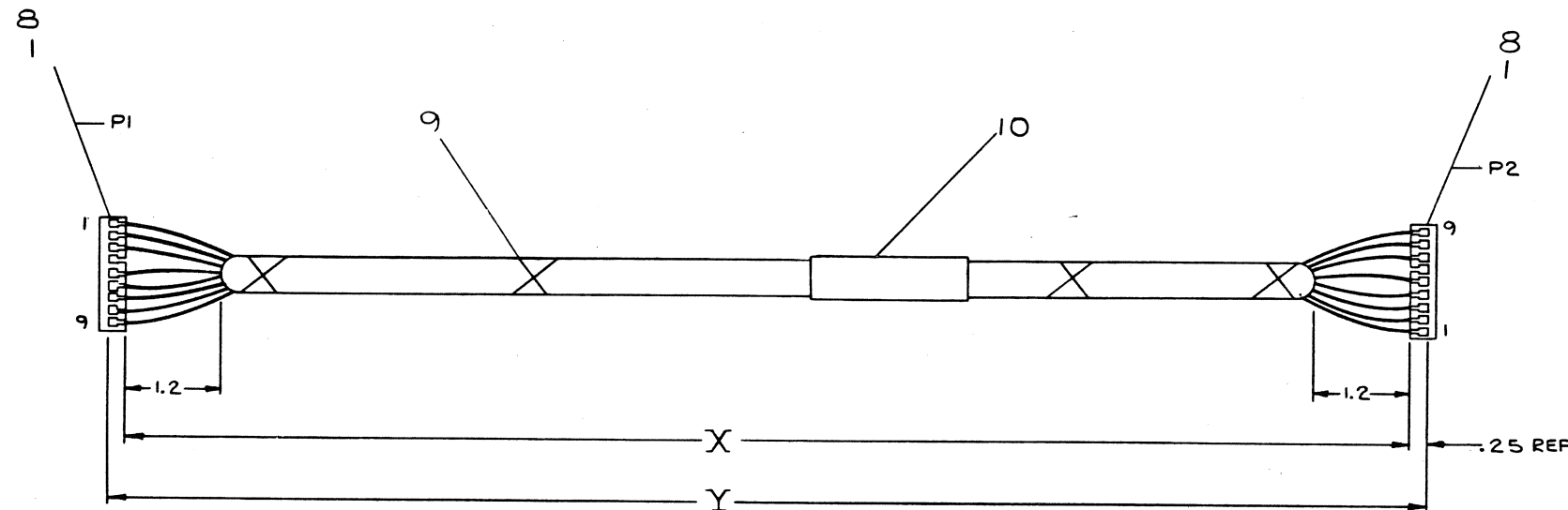
THIS DRAWING AND SPECIFICATIONS, HEREIN, ARE THE PROPERTY OF DIGITAL EQUIPMENT CORPORATION AND SHALL NOT BE REPRODUCED OR COPIED OR USED IN WHOLE OR IN PART AS THE BASIS FOR THE MANUFACTURE OR SALE OF ITEMS WITHOUT WRITTEN PERMISSION.
COPYRIGHT © 1975, DIGITAL EQUIPMENT CORPORATION

WIRE TABLE					
ITEM NO.	AWG	COLOR	FROM CONNECTION	TO CONNECTION	LENGTH
4	18	BLK	P1-1	P2-9	16.88
4	18	BLK	P1-2	P2-8	16.88
3	18	RED	P1-3	P2-7	16.88
8	-	-	P1-4	-	-
5	18	BLUE	P1-5	P2-5	16.88
4	18	BLK	P1-6	P2-4	16.88
2	18	ORN	P1-7	P2-3	16.88
6	18	WHT	P1-8	P2-2	16.88
7	18	VIO	P1-9	P2-1	16.88
8	-	-	P2-6	-	-
					SIGNAL
					GND
					+5V
					KEY
					-21V
					GND
					+21V
					+12V
					-12V
					KEY

LEGEND		
NUMBER	DIM 'X' VARIATION	DIM 'Y' (PRECUT) REF
7015739-1E	16.38 IN. ± 1.0 IN	16.88 IN

NOTES:

- USE CABLE TIES (X) ITEM 9 APPROXIMATELY EVERY FOUR (4) INCHES.
- NO STRIPPING OR TINNING REQUIRED.
- KEY PLUG ITEM #8 TO BE INSERTED INTO P2-6 AND P1-4.



SEE K-PL-7015739-0-DBP, PARTS LIST

1	LABEL, ADHESIVE	3618073-00	1
AM	TIE, CABLE	9010190-00	9
2	KEY PLUG	1215306-00	8
AM	WIRE, 18 AWG VIOLET STED	9107360-77	7
AM	WIRE, 18 AWG WHITE STED	9107360-99	6
AM	WIRE, 18 AWG BLUE STED	9107360-66	5
AM	WIRE, 18 AWG BLACK STED	9107360-00	4
AM	WIRE, 18 AWG RED STED	9107360-22	3
AM	WIRE, 18 AWG ORANGE STED	9107360-33	2
2	HOUSING, PLUG (9 PIN)	1215306-00	1

DESCRIPTION		DWG./PART NO.	ITEM NO.
UNLESS OTHERWISE SPECIFIED DIMENSIONS ARE IN INCHES			
ANGLES	CLASS OF ACCURACY	NOMINAL DIMENSION RANGE INCHES	
NOT SHOWN	(CHECK ONE)	OVER 0 TO .25	OVER .25 TO .49
SURFACE QUALITY	MEDIUM	OVER .50 TO 1.25	OVER 1.25 TO 2.50
MICROINCHES	PREFERRED	OVER 2.50 TO 4.99	OVER 5.00 TO 9.99
THIRD ANGLE PROJECTION	REMOVE BURRS AND BREAK SHARP CORNERS	DO NOT SCALE DWG	NEXT HIGHER ASSY.
MATERIAL SEE PARTS LIST	FINISH	SCALE NONE	SHEET 1 OF 1
DRN. DEANNE B. 10/18/75		CHK'D. J. 10/18/75	ENG. J. 10/18/75
PROD. ENG. 10/18/75		PROD. 10/18/75	3/1/77
E-AD-7015729-0-0		SIZE CODE	NUMBER
SCALE NONE		D	IA7015739-0-0
SHEET 1 OF 1		DIST.	REV. B

THIRD ANGLE PROJECTION
REMOVE BURRS AND
BREAK SHARP CORNERS
DO NOT SCALE DWG
MATERIAL
SEE PARTS LIST
FINISH

CABLE ASSY.
LOGIC / POWER

AN 1

[illegible]

THIS DRAWING AND SPECIFICATIONS, INCLUDING, AND THE
REVISIONS THEREON, SHALL BE THE PROPERTY OF THE
UNITED STATES GOVERNMENT AND SHALL NOT BE
REPRODUCED OR TRANSMITTED IN ANY FORM OR BY
ANY MEANS, ELECTRONIC OR MECHANICAL, INCLUDING
PHOTOCOPYING, RECORDING, OR BY ANY INFORMATION
STORAGE AND RETRIEVAL SYSTEM, WITHOUT PERMISSION
IN WRITING FROM THE ASSISTANT SECRETARY FOR
DEFENSE, OFFICE OF MILITARY AFFAIRS, WASHINGTON,
D.C. 20315-5000

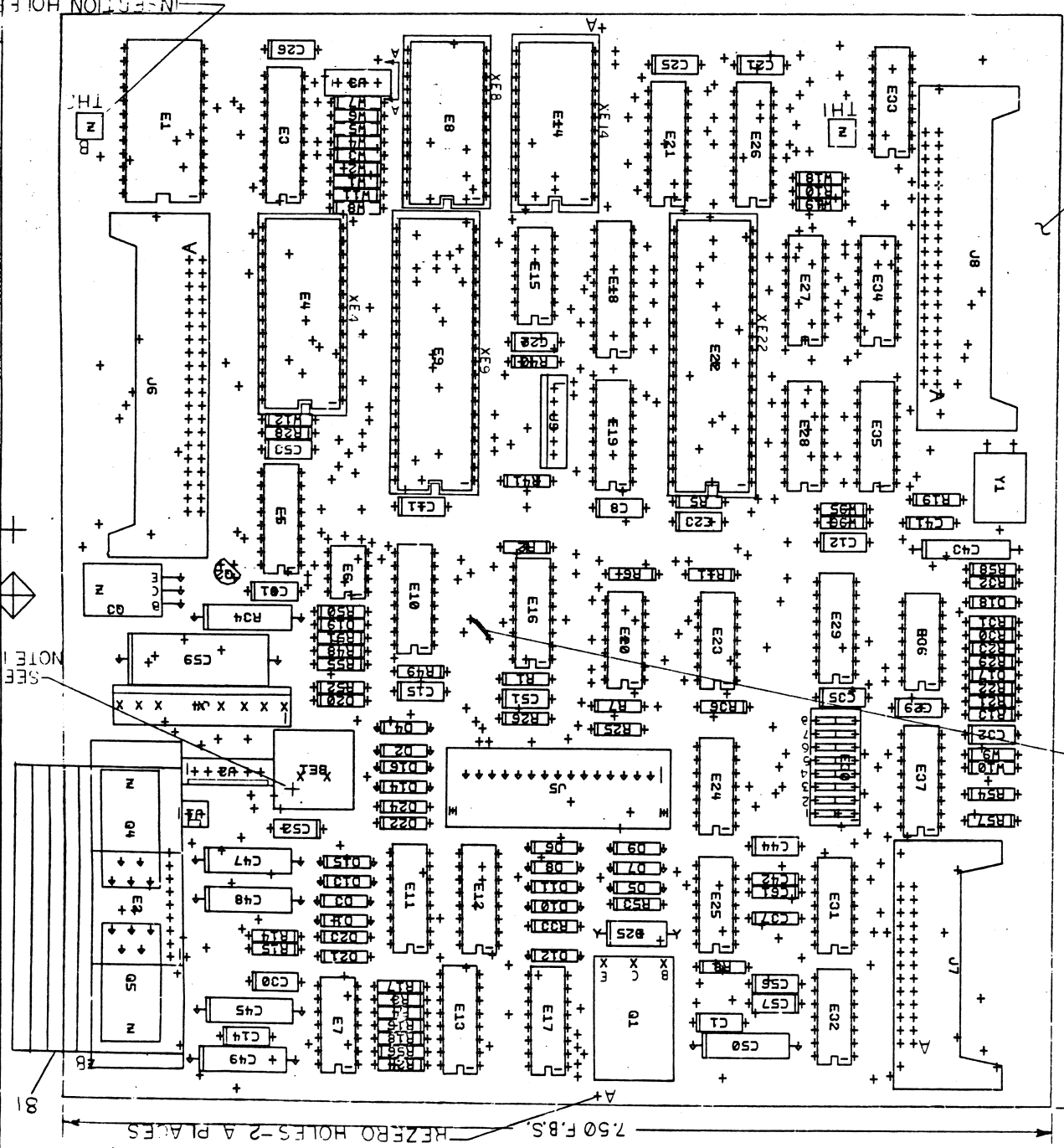
NOTES: 1. LONG LEAD OF BEL IS ON
PLUS (+) SIDE
2. DO NOT INSTALL C6, E8, XE8, Q4
3. W2, 4, 5, 7, 8, & W10

STEP 6	+ X AXIS NONE	STEP 1	TIMES
REPEAT	+ X AXIS 2, 8, 5	STEP 1	TIMES

CHANGE NO	REV
1	1
2	1
3	1
4	1
5	1
6	1
7	1
8	1
9	1
10	1
11	1
12	1
13	1
14	1
15	1
16	1
17	1
18	1
19	1
20	1
21	1
22	1
23	1
24	1
25	1
26	1
27	1
28	1
29	1
30	1
31	1
32	1
33	1
34	1
35	1
36	1
37	1
38	1
39	1
40	1
41	1
42	1
43	1
44	1
45	1
46	1
47	1
48	1
49	1
50	1
51	1
52	1
53	1
54	1
55	1
56	1
57	1
58	1
59	1
60	1
61	1
62	1
63	1
64	1
65	1
66	1
67	1
68	1
69	1
70	1
71	1
72	1
73	1
74	1
75	1
76	1
77	1
78	1
79	1
80	1
81	1
82	1
83	1
84	1
85	1
86	1
87	1
88	1
89	1
90	1
91	1
92	1
93	1
94	1
95	1
96	1
97	1
98	1
99	1
100	1

ETCH REV. E
SCALE 2:1
PROJ. ENG. 10/1/80
MECH. ENG. 10/1/80
CHK. D. 10/1/80
DATE 10/1/80
SIGNATURES

CONTROL BOARD
LA34
REV. 1
MS# 160886



"THIS DRAWING AND SPECIFICATIONS HEREIN ARE THE PROPERTY OF DIGITAL EQUIPMENT CORPORATION AND SHALL NOT BE REPRODUCED OR COPIED OR USED IN WHOLE OR IN PART AS THE BASIS FOR THE MANUFACTURE OR SALE OF ITEMS WITHOUT WRITTEN PERMISSION. COPYRIGHT © DIGITAL EQUIPMENT CORPORATION"

REWORK INSTRUCTIONS

ECO # 3

WIRE ADD SIDE ONE

1. AFTER BOARD HAS BEEN BUILT AND TESTED, TWO ETCHES MUST BE CUT AND A JUMPER WIRE (9105740-55) ADDED TO THE BOARD.
ON SIDE ONE CUT, THE ETCH AT E10 PINS 2 AND 3. ADD A JUMPER WIRE BETWEEN THE TWO FEED THROUGH HOLES IN THE ETCH RUNS FROM E10 PINS 2 AND 3.

REVISIONS		
CHK	CHANGE NO.	REV.

DEC FORM NO. 000 137

TITLE		SIZE CODE	NUMBER	REV.
LA34 CONTROL BOARD		D UA	5413747-0-0	M
SCALE 2/1	SHEET 2 OF 2	DIST.		

LINE ITEM DOCUMENT NUMBER PART NUMBER DESCRIPTION

1 1 D-MD-5013746-0-0 5013746-00 DRILL&ETCH BOARD

2 2 1001610-00 .01 MFD 50V +80-20% Z5U CER

3 3 1005636-00 22 MFD 6V 10% S.TANT

4 4 1012084-01 8 MFD 25V +75-10% AL EL

5 5 1012219-00 47 MFD 30V +75-10% AL EL

6 6 1012784-00 .047 MFD 50V +80-20% CER

7 7 1013466-12 2200.0 MMF 50V 10% X7R CER

8 8 1013466-18 330.0 MMF 50V 5% CER

9 9 1013466-31 15.0 MMF 50V 5% CER

10 10 1101938-00 IN 4370A VZ= 2.4 5% .40W

11 11 1105275-00 D 672 TR= 15NS PIV= 60V SI

12 12 1105796-00 IN 4004 PIV=400 I= 1A D041 SP

13 13 1110854-00 IN 5353B VZ= 16.0V 5% .40W M

14 14 1209941-02 HEADER 100 40POS RT ANGLE

15 15 1209941-09 HEADER 26POS RT ANGLE RCPT

16 16 1211164-04 SW,DIP 1P 1A 8POS

17 17 1215921-00 CONN, 4PIN WAFER,RIGHT ANG

18 18 1215006-06 SKT,IC 24PIN DIP TIN PLATE

19 19 1215006-08 SKT,IC 40PIN DIP TIN PLATE

20 20 1215323-00 CONN, 6POS POLARIZING & LO

21 21 1215323-02 CONN, 2POS POLARIZING & LO

22 22 1215324-00 CONN, 15POS GOLD PLATED

23 23 1215635-01 TRANSDUCER,MINIATURE AUDIO FOR LA

24 24 1215699-00 HEADER 9POS STRAIGHT

25 25 1300005-07 R NETWORK 15-4.7K 5.0 X 16PIN

26 26 1300247-00 120.0 .25 W 5.0 % CC

27 27 1300295-00 330.0 .25 W 5.0 % CC

28 28 1300365-00 1.0 K .25 W 5.0 % CC

REVISION HISTORY BASIC PART NO: 5413747

ENG: ECO NUMBER REV SECTION A OF B DRN: DAVID DROZD DATE: 21-MAR-80

INITIAL ID SECTION,VARIATION INDEX CHK'D: TONY SHEWTRASKI DATE: 21-MAR-80

DES.ENG: DON DODSON DATE: 21-MAR-80

RESP.ENG.: DON DODSON DATE: 21-MAR-80

INFO.ENG.: JOHN MCSHANE DATE: 21-MAR-80

ASSEMBLY NUMBER: ID-UA-5413747-0-0

TOP DOCUMENT NUMBER: FILE NAME: 13747N.PLS

REVISION HISTORY BASIC PART NO: 5413747

ENG: ECO NUMBER REV SECTION A OF B DRN: DAVID DROZD DATE: 21-MAR-80

INITIAL ID SECTION,VARIATION INDEX CHK'D: TONY SHEWTRASKI DATE: 21-MAR-80

DES.ENG: DON DODSON DATE: 21-MAR-80

RESP.ENG.: DON DODSON DATE: 21-MAR-80

INFO.ENG.: JOHN MCSHANE DATE: 21-MAR-80

ASSEMBLY NUMBER: ID-UA-5413747-0-0

TOP DOCUMENT NUMBER: FILE NAME: 13747N.PLS

REVISION HISTORY BASIC PART NO: 5413747

ENG: ECO NUMBER REV SECTION A OF B DRN: DAVID DROZD DATE: 21-MAR-80

INITIAL ID SECTION,VARIATION INDEX CHK'D: TONY SHEWTRASKI DATE: 21-MAR-80

DES.ENG: DON DODSON DATE: 21-MAR-80

RESP.ENG.: DON DODSON DATE: 21-MAR-80

INFO.ENG.: JOHN MCSHANE DATE: 21-MAR-80

ASSEMBLY NUMBER: ID-UA-5413747-0-0

TOP DOCUMENT NUMBER: FILE NAME: 13747N.PLS

REVISION HISTORY BASIC PART NO: 5413747

ENG: ECO NUMBER REV SECTION A OF B DRN: DAVID DROZD DATE: 21-MAR-80

INITIAL ID SECTION,VARIATION INDEX CHK'D: TONY SHEWTRASKI DATE: 21-MAR-80

DES.ENG: DON DODSON DATE: 21-MAR-80

RESP.ENG.: DON DODSON DATE: 21-MAR-80

INFO.ENG.: JOHN MCSHANE DATE: 21-MAR-80

ASSEMBLY NUMBER: ID-UA-5413747-0-0

AUTOMATED BY PRLST,3L(40)		PARTS LIST		QTY PER VARIATION		SHEET A1 OF A3	
LINE ITEM	DOCUMENT NUMBER	PART NUMBER	DESCRIPTION	00 99 01 02	REFERENCE DESIGNATOR		
1	D-MD-5013746-0-0	5013746-00	DRILL&ETCH BOARD	1	1	1	
2	1001610-00	.01 MFD	50V +80-20% Z5U CER	1	1	1	C32
3	1005636-00	22 MFD	6V 10% S.TANT	1	1	1	C43
4	1012084-01	8 MFD	25V +75-10% AL EL	5	5	5	C45,C47-C49,C50
5	1012219-00	47 MFD	30V +75-10% AL EL	1	1	1	C59
6	1012784-00	.047 MFD	50V +80-20% CER	21	21	21	C1,C8,C11,C12,C14,C15,C21-C23,C25,C26,C29,C30,C31,C35,C44,
7	1013466-12	2200.0 MMF	50V 10% X7R CER	1	1	1	C42
8	1013466-18	330.0 MMF	50V 5% CER	1	1	1	C37
9	1013466-31	15.0 MMF	50V 5% CER	1	1	1	C41
10	1101938-00	IN 4370A VZ= 2.4 5% .40W		1	1	1	D18
11	1105275-00	D 672 TR= 15NS PIV= 60V SI		7	7	7	D17,D19-D24
12	1105796-00	IN 4004 PIV=400 I= 1A D041 SP		16	16	16	D1-D16
13	1110854-00	IN 5353B VZ= 16.0V 5% .40W M		1	1	1	D25
14	1209941-02	HEADER 100 40POS RT ANGLE		2	2	2	J6,J8
15	1209941-09	HEADER 26POS RT ANGLE RCPT		1	1	1	J7
16	1211164-04	SW,DIP 1P 1A 8POS		1	1	1	E30
17	1215921-00	CONN, 4PIN WAFER,RIGHT ANG		1	1	1	J3
18	1215006-06	SKT,IC 24PIN DIP TIN PLATE		1	1	1	J4
19	1215006-08	SKT,IC 40PIN DIP TIN PLATE		2	2	2	J9,J2
20	1215323-00	CONN, 6POS POLARIZING & LO		2	2	2	XE22,XE9
21	1215323-02	CONN, 2POS POLARIZING & LO		1	1	1	J1
22	1215324-00	CONN, 15POS GOLD PLATED		1	1	1	J5
23	1215635-01	TRANSDUCER,MINIATURE AUDIO FOR LA		1	1	1	BET
24	1215699-00	HEADER 9POS STRAIGHT		1	1	1	J4
25	1300005-07	R NETWORK 15-4.7K 5.0 X 16PIN		1	1	1	E29
26	1300247-00	120.0 .25 W 5.0 % CC		1	1	1	R31
27	1300295-00	330.0 .25 W 5.0 % CC		8	8	8	R5,R14,R15,R28,R49,R54-R56
28	1300365-00	1.0 K .25 W 5.0 % CC		7	7	7	R13,R19,R29,R36,R40,R41,R53

THIS DRAWING AND SPECIFICATIONS HEREIN, ARE THE PROPERTY OF DIGITAL EQUIPMENT CORPORATION AND SHALL NOT BE REPRODUCED OR COPIED OR USED IN WHOLE OR IN PART AS THE BASIS FOR THE MANUFACTURE OR SALE OF ITEMS WITHOUT WRITTEN PERMISSION.

COPYRIGHT (C) 1981, DIGITAL EQUIPMENT CORPORATION

THIS DRAWING AND SPECIFICATIONS HEREIN, ARE THE PROPERTY OF DIGITAL EQUIPMENT CORPORATION AND SHALL NOT BE REPRODUCED OR COPIED OR USED IN WHOLE OR IN PART AS THE BASIS FOR THE MANUFACTURE OR SALE OF ITEMS WITHOUT WRITTEN PERMISSION. COPYRIGHT (C) 1981. DIGITAL EQUIPMENT CORPORATION.

LINE	ITEM	DOCUMENT NUMBER	PART NUMBER	DESCRIPTION	QTY PER VARIATION				REFERENCE DESIGNATOR
					00	99	01	02	
29	29		1300417-00	2.20 K .25 W 5.0 % CC	1	1	1	1	R33
30	30		1300439-00	3.30 K .25 W 5.0 % CC	1	1	1	1	R50
31	31		1300479-00	10.0 K .25 W 5.0 % CC	7	7	7	7	R6-R8,R10,R11,R21,R22
32	32		1300488-00	12.0 K .25 W 5.0 % CC	1	1	1	1	R32
33	33		1301423-00	6.80 K .25 W 5.0 % CC	11	11	11	11	R1-R4,R16-R18,R24-R26,R30
34	34		1301890-00	560.0 .25 W 5.0 % CC	1	1	1	1	R48
35	35		1302388-00	2.0 K .25 W 5.0 % CC	1	1	1	1	R51
36	36		1302466-00	100.0 K .25 W 5.0 % CC	2	2	2	2	R23,R58
37	37		1302602-00	56.0 .25 W 5.0 % CC	1	1	1	1	R52
38	38		1312452-00	3.74 K .25 W 1.0 % RN55D-F10	1	1	1	1	R57
39	39		1315676-00	300.0 3.0 W 5.0 % WW 9	1	1	1	1	R34
40	40		1510706-00	XA 55 PNP 500MW SI 60 50 P	1	1	1	1	Q2
41	41		1514509-00	TIP 125 PNP 65W SI 60 500 8A	1	1	1	1	Q3
42	42		1515370-00	TIP146 PNP DARLINGTON-CONNECTED	1	1	1	1	Q1
43	43		1812396-03	XTAL 4.000 MHZ	1	1	1	1	Y1
44	44		1910322-00	DEC 1488L DRIVER,LINE,QUAD,EI	1	1	1	1	E32
45	45		1910406-00	75451 DRIVER,PERIPH,DUAL,	1	1	1	1	E6
46	46		1910741-00	7406 INVERTER GATE-HEX 1I	1	1	1	1	E7
47	47		1912108-00	339 VOLT CMPTTR,QUAD	1	1	1	1	E36
48	48		1912697-00	LS174 FF-D HEX W/CLEAR	1	1	1	1	E34
49	49		1912799-00	LS00 NAND-GATE-QUAD 2IN,P	1	1	1	1	E15
50	50		1912805-00	LS08 AND GATE-QUAD 2IN,PO	1	1	1	1	E25
51	51		1912807-00	LS10 NAND GATE-TRIPLE 3IN	1	1	1	1	E23
52	52		1912816-00	LS32 OR GATE-QUAD 2IN,POS	1	1	1	1	E20
53	53		1912824-00	LS74 FF-D DUAL,EDGE TRIGG	1	1	1	1	E24
54	54		1912842-00	LS138 DECODER-THREE INPUT,	1	1	1	1	E35
55	55		1912843-00	LS139 DECODER, 2 OF 4(DUAL	1	1	1	1	E19
56	56		1912846-00	LS155 DECODER,2 OF 4(DUAL)	1	1	1	1	E33
57	57		1912863-00	LS273 FF-D OCTAL W/CLEAR	1	1	1	1	E18
58	58		1913130-00	DEC 1489A RECEIVER,LINE,QUAD,	1	1	1	1	E31
59	59		1913471-00	LS367 DRIVER,BUS,HEX,TRI-	3	3	3	3	E10,E28,E27
60	60		1913777-00	LS240 DRIVER,LINE,OCTAL,T	1	1	1	1	E3
61	61		1913950-00	LS156 DECODER,2 OF 4(DUAL)	1	1	1	1	E5
62	62		1914072-00	74159 DECODER-4 TO 16 OPN	1	1	1	1	E1
63	63		1914560-00	LS368 DRIVER,BUS,HEX,TRI-	3	3	3	3	E13,E16,E37
64	64		1915261-00	DEC 2841B DRIVER,1.5A QUAD	3	3	3	3	E11,E12,E17
65	65		1915636-00	*** THIS ITEM IS NOT USED ***	-	-	-	-	
66	66		2113107-01	P 8251A PUSART COMM. INTERFA	1	1	1	1	E4
67	67		2113954-00	DC 305 INTERFACE CHIP	1	1	1	1	E9
68	68	SEE NOTE 5	2114212-00	P 2114-2 RAM,1024X4,STATIC	2	2	2	2	E21,E26
69	69		2114963-00	UP,8-BIT NMOS	1	1	1	1	E22
70	70	SEE NOTE 1	23021E4-00	E4-01,E4-02,E4-03	1	-	-	-	E14
71	71		9009185-00	JUMPER, WIRE, INSULATED, BLACK B	10	10	10	10	W1,W3,W6,W9,W11,W12,W18,W19,PCF.
72	72		1215006-07	SKT,IC 28PIN DIP YIN PLATE	1	1	-	-	W96
73	73	SEE NOTE 2	23030E4-00	E4-01,E4-03	-	-	1	-	XE4
74	74		9105740-55	WIRE(WRAP)30AWG UL1423	A/R	A/R	A/R	A/R	E14
75	75	SEE NOTE 3	23034E4-00	E4-01,E4-02,E4-03	-	-	-	1	E14

D	I	G	I	T	A	L	TITLE	SECTION A	OF B	SIZE	CODE	DOCUMENT NUMBFR	REV
							54-13747 BOARD			K	PL	5413747-0-DB+	A

LINE ITEM DOCUMENT NUMBER PART NUMBER DESCRIPTION 00 99 01 02 REFERENCE DESIGNATOR

76	76	23033E4-00	*** THIS ITEM IS NOT USED ***	-	-	-	-
77	77	1916002-00	DRIVER,MOTOR CONTR	2	2	2	04,05
78	78	9006023-01	SCREW,PAN,PHIL 6-32X 7/16 SS	2	2	2	
79	79	9008185-00	NUT,KEP 6-32X 1/4 AF	2	2	2	
80	80	9008268-00	COMPOUND, THERMAL JOINT	2	2	2	
81	81	7424745-00	HEAT SINK H DRIVERS	1	1	1	

82 NOTE: 1. PT#23021E4-00 CAN HAVE A 01 OR AN 03 VARIATION.
83 NOTE: 2. PT#23030E4-00 CAN HAVE A 00 THRU 03 VARIATION.
84 NOTE: 3. PT#23034E4-00 CAN HAVE A 00 THRU 03 VARIATION.
85 NOTE: 4. PT#23033E4-00 CAN HAVE A 00 THRU 03 VARIATION.
86 NOTE: 5 IF 2114212-00 IS NOT AVAILABLE 2114212-01 CAN BE USED.

LINE	ITEM	DOCUMENT NUMBER	PART NUMBER	DESCRIPTION	QTY	PER VARIATION	REFERENCE DESIGNATOR
					03		
1	1	D-MD-5013746-0-0	5013746-00	DRILL&ETCH BOARD	1		
2	2		1001610-00	.01 MFD 50V +80-20% Z5U CER	1		C32
3	3		1005636-00	22 MFD 6V 10% S.TANT	1		C43
4	4		1012084-01	8 MFD 25V +75-10% AL EL	5		C45,C47-C49,C50
5	5		1012219-00	47 MFD 30V +75-10% AL EL	1		C59
6	6		1012784-00	.047 MFD 50V +80-20% CER	21		C1,C8,C11,C12,C14,C15,C21-C23, C25,C26,C29,C30,C31,C35,C44, C51-C53,C56,C57
7	7		1013466-12	2200.0 MMF 50V 10% X7R CER	1	CONT	C42
8	8		1013466-18	330.0 MMF 50V 5% CER	1	CONT	C37
9	9		1013466-31	15.0 MMF 50V 5% CER	1		C41
10	10		1101938-00	1N 4370A VZ= 2.4 5% .40W	1		D18
11	11		1105275-00	D 672 TR= 15NS PIV= 60V SI	7		D17,D19-D24
12	12		1105796-00	1N 4004 PIV=400 I= 1A D041 SP	16		D1-D16
13	13		1110854-00	1N 5353B VZ= 16.0V 5% .40W M	1		D25
14	14		1209941-02	HEADER 100 40POS RT ANGLE	2		J6,J8
15	15		1209941-09	HEADER 26POS RT ANGLE RCPT	1		J7
16	16		1211164-04	SW,DIP 1P 1A 8POS	1		E30
17	17		1215921-00	CONN, 4PIN WAFER,RIGHT ANG	1		J3
18	18		1215006-06	SKT,IC 24PIN DIP TIN PLATE	1		XE14
19	19		1215006-08	SKT,IC 40PIN DIP TIN PLATE	2		XE22,XE9
20	20		1215323-00	CONN, 6POS POLARIZING & LO	2		J9,J2
21	21		1215323-02	CONN, 2POS POLARIZING & LO	1		J1
22	22		1215324-00	CONN 15POS GOLD PLATED	1		J5
23	23		1215635-01	TRANSDUCER,MINATURE AUDIO FOR LA	1		BE1
24	24		1215699-00	HEADER 9POS STRAIGHT	1		J4
25	25		1300005-07	R NETWORK 15-4.7K 5.0 % 16PIN	1		E29
26	26		1300247-00	120.0 .25 W 5.0 % CC	1		R31
27	27		1300295-00	330.0 .25 W 5.0 % CC	8		R5,R14,R15,R28,R49,R54-R56
28	28		1300365-00	1.0 K .25 W 5.0 % CC	7		R13,R19,R29,R36,R40,R41,R53

REVISION HISTORY		BASIC PART NO: 5413747		DRN:	DAVID DROZD	DATE: 21-MAR-80	D I G I T A L			
ENG	ECO NUMBER	REV	SECTION B OF B	CHK'D:	TONY SHEWTRASKI	DATE: 21-MAR-80	TITLE PARTS LIST			
---	INITIAL	D	SECTION.VARIATION INDEX	DES.ENG:	DON DODSON	DATE: 21-MAR-80	54-13747 BOARD			
JB	5413747-PN001	E	[A] 00,99,01,02	RESP.ENG.:	DON DODSON	DATE: 21-MAR-80	DOCUMENT NUMBER			
JB	5413747-PN002	F	[B] 03	MFG.ENG.:	JOHN MCSHANE	DATE: 21-MAR-80	K	PL	5413747-0-DBP	N
JB	5413747-PN003	H	[C]	ASSEMBLY NUMBER:		TOP DOCUMENT NUMBER:	FILE NAME:		EDIT #	
JB	5413747-PN004	J	[D]	D-UA-5413747-0-0			13747N.PLS		10	
JB	5413747-PN005	K	[E]							
JB	5413747-PN006	L	[F]							
JB	5413747-PN007	M	[H]							
NG	5413747-PN009	N	[J]							
			[K]							
			[L]							
			[M]							
			[N]							
THIS DRAWING AND SPECIFICATIONS HEREIN, ARE THE PROPERTY OF DIGITAL EQUIPMENT CORPORATION AND SHALL NOT BE REPRODUCED OR COPIED OR USED IN WHOLE OR IN PART AS THE BASIS FOR THE MANUFACTURE OR SALE OF ITEMS WITHOUT WRITTEN PERMISSION.										
COPYRIGHT (C) 1981. DIGITAL EQUIPMENT CORPORATION										

QTY PER VARIATION
REFERENCE DESIGNATOR

LINE ITEM	DOCUMENT NUMBER	PART NUMBER	DESCRIPTION	QTY PER VARIATION	REFERENCE DESIGNATOR
29		1300417-00	2.20 K .25 W 5.0 %	1	R33
30		1300439-00	3.30 K .25 W 5.0 %	1	R50
31		1300479-00	10.0 K .25 W 5.0 %	7	R6-R8,R10,R11,R21,R22
32		1300488-00	12.0 K .25 W 5.0 %	1	R32
33		1301423-00	6.80 K .25 W 5.0 %	11	R1-R4,R16-R18,R24-R26,R30
34		1301890-00	560.0 .25 W 5.0 %	1	R48
35		1302388-00	2.0 K .25 W 5.0 %	1	R51
36		1302466-00	100.0 K .25 W 5.0 %	2	R23,R58
37		1302602-00	56.0 .25 W 5.0 %	1	R52
38		1312452-00	3.74 K .25 W 1.0 % RNS5D-F10	1	R57
39		1315676-00	300.0 3.0 W 5.0 %	1	R34
40		1510706-00	55 PNP 500MW SI 60 50 P	1	Q2
41		1514509-00	125 PNP 65W SI 60 500 84	1	Q3
42		1515370-00	TIP146 PNP DARLINGTON-CONNECTED	1	Q1
43		1812396-03	XTAL 4.000 MHZ	1	Y1
44		1910322-00	1488L DRIVER,LINE,QUAD,EI	1	E32
45		1910406-00	75451 DRIVER,FERIPH,DUAL,	1	E6
46		1910741-00	7406 INVERTER GATE-HEX 11	1	E7
47		1912108-00	339 VOLT CMPLTR,QUAD	1	E36
48		1912697-00	LS174 FF-D HEX W/CLEAR	1	E34
49		1912799-00	LS00 NAND-GATE-QUAD 2IN,P	1	E15
50		1912805-00	LS08 AND GATE-QUAD 2IN,P0	1	E25
51		1912807-00	LS10 NAND GATE-TRIPLE 3IN	1	E23
52		1912816-00	LS32 OR GATE-QUAD 2IN,P05	1	E20
53		1912824-00	LS74 FF-D DUAL,EDGE TRIGG	1	E24
54		1912842-00	LS138 DECODER-THREE INPUT,	1	E35
55		1912843-00	LS139 DECODER, 2 OF 4(DUAL)	1	E19
56		1912846-00	LS155 DECODER, 2 OF 4(DUAL)	1	E33
57		1912863-00	LS273 FF-D OCTAL W/CLEAR	1	E18
58		1913130-00	1489A RECEIVER,LINE,QUAD,	1	E31
59		1913471-00	LS367 DRIVER,BUS,HEX,TRI-	3	E10,E28,E27
60		1913777-00	LS240 DRIVER,LINE,OCTAL,1	1	E3
61		1913950-00	LS156 DECODER, 2 OF 4(DUAL)	1	E5
62		1914072-00	74159 DECODER-4 TO 16 OFN	1	E1
63		1914560-00	LS368 DRIVER,BUS,HEX,TRI-	3	E13,E16,E37
64		1915261-00	2841B DRIVER,1.5A QUAD	3	E11,E12,E17
65		1915636-00	*** THIS ITEM IS NOT USED ***	-	
66		2113107-01	8251A FUSART COMM. INTERFA	1	E4
67		2113954-00	305 INTERFACE CHIP	1	E9
68		2114212-00	P 2114-2 RAM,1024X4,STATIC	2	E21,E26
69		2114963-00	UP,8-BIT NMOS	1	E22
70	SEE NOTE 1	23021E4-00	*** THIS ITEM IS NOT USED ***	-	
71		9009185-00	JUMPER, WIRE, INSULATED, BLACK B	10	W1,W3,W6,W9,W11,W12,W18,W19,W95,
72		1215006-07	SKT,IC 28PIN DIP TIN PLATE	1	XE4
73	SEE NOTE 2	23030E4-00	*** THIS ITEM IS NOT USED ***	-	
74		9105740-55	WIRE(WRAP)30AWG UL1423	A/R	
75	SEE NOTE 3	23034E4-00	*** THIS ITEM IS NOT USED ***	-	

D	I	G	I	T	A	L	TITLE	SECTION B OF B	K	FL	SIZE	CODE	DOCUMENT NUMBER	REV
							54-13747 BOARD						5413747-0-DBP	N

LINE	ITEM	DOCUMENT NUMBER	PART NUMBER	DESCRIPTION	QTY PER VARIATION 03	REFERENCE DESIGNATOR
76	76	SEE NOTE 4	23033E4-00	E4-01,E4-02,E4-03	1	E14
77	77		1916002-00	DRIVER,MOTOR CONTRO	2	Q4,Q5
78	78		9006023-01	SCREW,PAN,PHIL 6-32X 7/16 SS	2	
79	79		9008185-00	NUT,KEP 6-32X 1/4 AF	2	
80	80		9008268-00	COMPOUND, THERMAL JOINT	A/R	
81	81		7424745-00	HEAT SINK H DRIVERS	1	

- 82 NOTE: 1. PT#23021E4-00 CAN HAVE A 01 OR AN 03 VARIATION.
83 NOTE: 2. PT#23030E4-00 CAN HAVE A 00 THRU 03 VARIATION.
84 NOTE: 3. PT#23034E4-00 CAN HAVE A 00 THRU 03 VARIATION.
85 NOTE: 4. PT#23033E4-00 CAN HAVE A 00 THRU 03 VARIATION.
86 NOTE: 5. IF 2114212-00 IS NOT AVAILABLE 2114212-01 CAN BE USED.

D	I	G	I	T	A	L	TITLE	54-13747 BOARD	SECTION B OF B	SIZE	CODE	DOCUMENT NUMBER	REV
										K	PL	5413747-0-DBP	N