

**"THE MATERIAL HEREIN IS FOR INFORMATION PURPOSES ONLY AND IS SUBJECT TO CHANGE WITHOUT NOTICE. DIGITAL EQUIPMENT CORPORATION ASSUMES NO RESPONSIBILITY FOR ANY ERRORS WHICH MAY APPEAR HEREIN."**

# FIELD MAINTENANCE PRINT SET

"THIS DRAWING AND SPECIFICATIONS, HEREIN, ARE THE PROPERTY OF DIGITAL EQUIPMENT CORPORATION AND SHALL NOT BE REPRODUCED OR COPIED OR USED IN WHOLE OR IN PART AS THE BASIS FOR THE MANUFACTURE OR SALE OF ITEMS WITHOUT WRITTEN PERMISSION. COPYRIGHT © 1978 DIGITAL EQUIPMENT CORPORATION."

# TABLE OF CONTENTS

A-SP-H7834-Ø-2	ENGINEERING SPECIFICATION
E-UA-H7834-Ø-Ø	POWER SUPPLY (H7834)
D-UA-5413325-0-0	POWER SUPPLY (LA34)
D-CS-5413325-0-1	POWER SUPPLY (LA34)
K-PL-5413325-Ø-DBP	DATA BASE PARTS LIST

**UNIT VARIATIONS  
COVERED BY THIS  
PRINT SET**

**H7834**

# H7834

## Field Maintenance

### Print Set

# Digital Equipment Corporation

PRINT SET ORDER NO. MP00702

REVISIONS	REV		USED ON OPTION/MODEL		DRN.	DATE	TITLE: POWER SUPPLY (H7834)										
	CHG. NO.			H7834		W. J. MAHER											28SEP78
	DATE			LA34		CHK'D	DATE	SIZE B CODE TC NUMBER H7834-Ø-1 REV.									
						R. Bingham	29-9-78										
						PROJ. ENG.	DATE										
						J. L. Bingham	10/19/78										
						R. M. MacKenzie	19 OCT 78										
						FIELD SERV.	DATE										
						DIST.											
			SHEET 1 OF 1		R. M. MacKenzie	19 OCT 78											

digital

**DRB 124**

1

**11111111**

**CODE**

172

This document contains confidential proprietary information of DEC. This information shall not be disclosed to persons outside the employ of DEC, except by DEC personnel so authorized by DEC, and only for use by DEC or its subsidiaries in the design, production or manufacture of products for DEC. Copyright © 1978 Digital Equipment Corporation.

DIGITAL EQUIPMENT CORPORATION  
MAYNARD, MASSACHUSETTS

ENGINEERING SPECIFICATION

DATE June, 1978

TITLE H7834 POWER SUPPLY

REVISIONS

REV	DESCRIPTION	CHG NO	ORIG	DATE	APPD BY	DATE
-----	-------------	--------	------	------	---------	------

ENG	Ralph MacKenzie	APPD	<i>Ralph M. MacKenzie</i> 10/17/78	SIZE	A	CODE	SP	NUMBER	H7834-0-2	REV	
-----	-----------------	------	------------------------------------	------	---	------	----	--------	-----------	-----	--

EN-1079A-16-R873-(392)  
DRA 107A

SHEET 1 OF 9

ENGINEERING SPECIFICATION

CONTINUATION SHEET

TITLE H7834 POWER SUPPLY

1.0 Characteristics

1.1 Performance

1.1.1 Inputs

The module shall perform as specified herein when supplied with the inputs described in the following paragraphs.

1.1.1.1 Voltage

The AC input voltage shall be one phase, two wire, switch selectable in two ranges:

87 - 128 VRMS  
174 - 256 VRMS

1.1.1.2 Frequency

The frequency of the AC input voltage shall be 47 - 63 Hz.

1.1.1.3 Current

The input current shall be as follows:

1.3 A RMS maximum at 87 VRMS  
0.7 A RMS maximum at 174 VRMS

1.1.1.4 Inrush Current

The input inrush current shall be as follows:

50A peak for 1/2 cycle at 128 VRMS  
50A peak for 1/2 cycle at 256 VRMS

1.1.1.5 Power

The input power shall be 65 watts maximum. Apparent input power shall be 110 VA maximum.

1.1.1.6 Power Factor

The power factor shall be 0.6 minimum at full load and 87 VRMS.

1.1.1.7 Leakage Current

When installed in the LA34 terminal the leakage current shall be 0.5 MA RMS max each line to ground at 250V RMS sine, 50 Hz.

DEC FORM NO EN-01022-16-N370-(381)  
DRA 108

SIZE	A	CODE	SP	NUMBER	H7834-0-2	REV	
------	---	------	----	--------	-----------	-----	--

SHEET 2 OF 9

ENGINEERING SPECIFICATION		TITLE		H7834 POWER SUPPLY	
CONTINUATION SHEET		DRAFT		SHEET 3 OF 9	
DEC FORM NO EN-01022-16-N370-(381)		DRA 108			
1.1.1.8 Overcurrent		The input overcurrent protection is provided by a user accessible 3A normal blow fuse.		1.1.1.9 Electromagnetic Interference/Susceptibility	
		When installed in the LA34 the conducted or radiated interference/susceptibility shall be as follows:		1.1.1.9.1 Conducted Transients	
		System degradation shall not be caused by a single 300V, 0.2 watt sec. maximum voltage transient. Survival level for a single voltage transient shall be 1000V at 2.5 watt-sec max. Survival level for an average power transient shall be 0.5W maximum.		1.1.1.9.2 Conducted CW Noise	
		Conducted CW noise shall not exceed the following:		10 KHz to 3 MHz 3VRMS max. 3 MHz to 500 MHz 1VRMS max. 500 MHz to 1 GHz 0.5VRMS max.	
		The following RF fields shall not cause system degradation (with the power supply installed in the terminal)		10 KHz to 30 MHz 1V/M max. 30 MHz to 1 GHz 10V/M max.	
		Power Line Disturbances		1.1.1.10 With the module installed in the terminal, the performance with power line disturbances shall be as follows:	
		1.1.1.10.1 Overvoltage		The H7834 power supply shall withstand for one second 117% of the rated maximum input voltages specified in 1.1.1.1 without causing system degradation or damage.	
REV		NUMBFR		H7834-0-2	
SIZE		CODE		SP	
A		SP		H7834-0-2	
REV		NUMBFR		H7834-0-2	

ENGINEERING SPECIFICATION		TITLE		H7834 POWER SUPPLY	
CONTINUATION SHEET		DRAFT		SHEET 4 OF 9	
DEC FORM NO EN-01022-16-N370-(381)		DRA 108			
1.1.1.10.2 Undervoltage		The H7834 power supply module shall withstand undervoltages and power interruptions without sustaining damage or causing damage to the LA34.		1.1.1.10.3 Ride Through	
		At 87VRMS input and full load, all outputs shall remain within their specified limits for 20 milliseconds minimum.		1.1.1.11 Electromagnetic Interference	
		With the module installed in the terminal, the conducted and radiated emissions level shall be as follows:		1.1.1.11.1 Conducted Emission	
		The conducted emissions shall satisfy the VDE A limit.		1.1.1.11.2 Radiated Emissions	
		The radiated emissions shall satisfy the VDE A limit.		1.1.1.12 Dielectric Withstanding	
		With the AC power disconnected the module shall withstand the application of the following high voltage direct current levels without damage or arcing.		1.1.1.12.1 Input to Frame	
		The module shall withstand 2.5 KV DC from input to frame for one minute.		1.1.1.12.2 Input to Output	
		The module shall withstand 2.5 KV DC from input to output for one minute.		REV	
		NUMBFR		H7834-0-2	
		CODE		SP	
		SIZE		A	
		SP		H7834-0-2	
		REV		NUMBFR	

ENGINEERING SPECIFICATION		CONTINUATION SHEET	
TITLE H7834 POWER SUPPLY			
1.1.2 Outputs			
The module shall provide outputs as defined in the following paragraphs. All outputs are defined at the output connector J2.			
1.1.2.1 Currents			
The output currents shall meet the requirements of a single LA00 terminal.			
+5.1 VDC at 0.5A minimum to 3.0A maximum			
+12 VDC at 0.02A minimum to 0.2A maximum			
-12VDC at 0.02A minimum to 0.2A maximum			
+21 VDC at 0A minimum to 1.0A maximum			
-21 VDC at 0.1A minimum to 1.0A maximum			
The total average power from the +21V and -21V outputs is limited to 21 watts.			
1.1.2.2 Voltages			
The output voltages shall have the following tolerances under the specified loads.			
1.1.2.2.1 +5.1 volt Output			
the +5.1 volt output shall have the following characteristics as measured at Pin 3 (Pin 2 return) of J2:			
a) Overall regulation: +5%			
b) Initial tolerance +1%			
c) Static line regulation: +0.5%			
d) Static load regulation: +1.5%			
e) Long term stability: +0.1%/1000 hrs.			
f) Thermal drift: -0.01 + .01%/°C			
g) Ripple: 200 MV p-p for f ≤ 20 KHz			
h) Noise: 200 MV peak to peak at f ≤ 100 KHz			
i) Dynamic load regulation: TBDL			
1.1.2.2.2 +21 Volt Output			
The +21 volt output shall have the following characteristics as measured at Pin 7 (Pin 6 return) of J2:			
a) Overall regulation: +10%			
SIZE	CODE	NUMBFR	REV
A	SP	H7834-Ø-2	

ENGINEERING SPECIFICATION		CONTINUATION SHEET	
TITLE H7834 POWER SUPPLY			
1.1.2.2.2 (continued)			
b) Initial tolerance +3%			
c) Static line regulation: +0.5%			
d) Static load regulation: +4%			
e) Long term stability: +0.1%/1000 hrs.			
f) Thermal drift: -0.05 + .05%/°C			
g) Ripple: 200 MV p-p max for f ≤ 20 KHz			
h) Noise: 1% peak at f ≤ 100 KHz			
i) Dynamic load regulation: ±3.5% based upon any one of the following load conditions			
1) 2 + 0.25A load switched at 50% duty cycle at a PRF of 5 to 500 Hz (minimum loading on -21V output during this time).			
2) Triangular pulsed load of 7 + 1A peak amplitude, average value of 3.5 + 0.25A pulse width of 1 + 0.1 msec (msec) at base of triangle), and a PRF of 0 to 140 Hz (identical loading on -21V output during this time).			
3) Triangular pulsed load of 2 + 0.25A peak amplitude, average value of 1 + 0.1A, pulse width of 1 + 0.1msec (at base of triangle), and a PRF of 0 to 500 Hz (identical loading on -21V output during this time).			
1.1.2.2.3 -21 Volt Output			
The -21 volt output shall have the following characteristics as measured at Pin 5 (Pin 6 return) of J2:			
a) Overall regulation: + 10%			
b) Initial tolerance: +3%			
c) Static line regulation: + 0.5%			
d) Static load regulation: + 4%			
e) Long term stability: +0.1%/1000 hrs.			
f) Thermal Drift: -0.05 + 0.5%/°C			
g) Ripple: 200 MV p-p maximum for f ≤ 20 KHz			
SIZE	CODE	NUMBFR	REV
A	SP	H7834-Ø-2	



ENGINEERING SPECIFICATION		TITLE		H7834 POWER SUPPLY	
1.1.2.2.5 -12 Volt Output					
The -12 volt output shall have the following characteristics as measured at Pin 9 (Pin 1 return) of J2):					
a) Overall regulation: $\pm 5\%$					
b) Initial tolerance: $\pm 3.5\%$					
c) Static line regulation: $\pm 0.2\%$					
d) Static load regulation: $\pm 0.7\%$					
e) Long term stability: $\pm 0.2\%/1000$ hrs.					
f) Thermal drift: $\pm .002\%/^{\circ}\text{C}$					
g) Ripple: 2.0 MV p-p max for $f < 20$ KHz					
h) Noise: 1% peak at $f < 100$ KHz					
i) Dynamic load regulation: TBDL					
1.1.2.3					
Overload Protection					
Overload protection is provided for all outputs.					
1.1.2.3.1 +5V Output					
Current limit point: $3.5 \pm 0.3\text{A}$					
Short circuit current ( $R < .050$ ohms) : 2.0A maximum					
1.1.2.3.2 +21V Output					
Current limit point: $2.8 \pm 0.3\text{A}$					
Short circuit current ( $R < .050$ ohms) : 6.0A maximum					
1.1.2.3.3 -21V Output					
Current limit point: $2.8 \pm 0.3\text{A}$					
Short circuit current ( $R < .050$ ohms) : 6.0A maximum					
1.1.2.3.4 +12V Output					
Current limit point: $0.4 \pm 0.1\text{A}$					
Short circuit current: 0.65A maximum					
REV		NUMBER		H7834-0-2	
SIZE		CODE		SP	
A		SP		H7834-0-2	
SHEET 8		OF 9		SHEET 8	
DEC FORM NO		EN-01022-16-N370-(381)		DRA 108	

ENGINEERING SPECIFICATION		TITLE		H7834 POWER SUPPLY	
1.1.2.2.3 (continued)					
h) Noise: 1% peak at $f < 100$ KHz					
i) Dynamic load regulation: $\pm 3.5\%$					
based upon any one of the following load conditions					
1) 2 + 0.25A load switched at 50% duty cycle at a PRF of 5 to 500 Hz ( minimum loading on +21V output during this time).					
2) Triangular pulse load of 7 + 1A peak amplitude, average value of 3.5 + 0.25A, pulse width of 1 + 0.1 msec (at base of triangle). and a PRF of 0 to 140 Hz. (identical loading on +21V output during this time).					
3) Triangular pulsed load of 2 + 0.25A peak amplitude, average value of 1 + 0.1A, pulse width of 1 + 0.1 msec (at base of triangle) and a PRF of 0 to 500 Hz (identical loading on +21V output during this time).					
The +12 volt output shall have the following characteristics as measured at Pin 8 (Pin 1 return) of J2:					
a) Overall regulation: $\pm 5\%$					
b) Initial tolerance: $\pm 4\%$					
c) Static line regulation: $\pm 0.25\%$					
d) Static load regulation: $\pm 0.25\%$					
e) Long term stability: $\pm 0.2\%/1000$ hrs					
f) Thermal drift: $\pm .004\%/^{\circ}\text{C}$					
g) Ripple: 2.0 MV p-p max for $f < 20$ KHz					
h) Noise: 1% peak at $f < 100$ KHz					
i) Dynamic load regulation: TBDL					
REV		NUMBER		H7834-0-2	
SIZE		CODE		SP	
A		SP		H7834-0-2	
SHEET 7		OF 9		SHEET 7	
DEC FORM NO		EN-01022-16-N370-(381)		DRA 108	

# ENGINEERING SPECIFICATION

digital

## CONTINUATION SHEET

TITLE H7834 POWER SUPPLY

### 1.1.2.3.5 -12V Output

Current limit point:  $0.4 \pm 0.1A$

Short circuit current: 0.65A maximum

### 1.1.2.4 Overvoltage Protection

Overvoltage protection is provided for the +5.0V output.

Overvoltage limit point:  $+5.4 \pm 0.1$  VDC

## 1.2 Environmental Conditions

The H7834 power supply module shall perform as specified herein when installed in the LA34 terminal under the following environmental conditions:

### 1.2.1 Ambient Temperature

a) Operating: 0 to 40°C

b) Non-operating: -40 to +85°C

### 1.2.2 Temperature Shock

1°C/sec

### 1.2.3 Humidity

Per DEC Standard 102 Class B and Paragraph 3.1 and 3.2

### 1.2.4 Shock

Per DEC Standard 102 Class B and Paragraph 5.1 and 5.2

### 1.2.5 Vibration

Per DEC Standard 102 Class and Paragraph 6.1 and 6.2

## 1.3 Design and Construction

Design and construction of the power supply module shall be in accordance with drawing E-UA-H7834-0-0 and this specification.

## 1.4 Operational Failure Rate

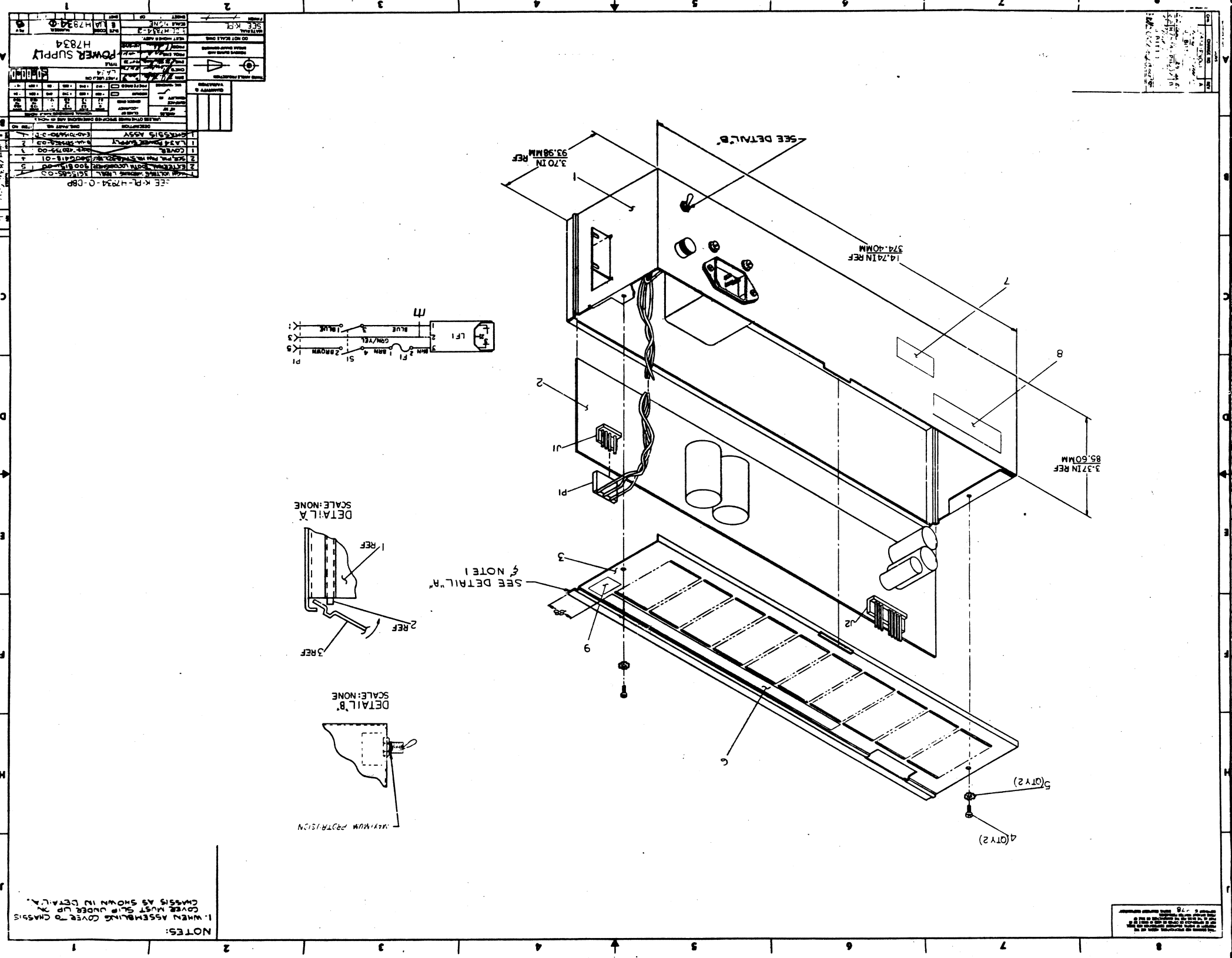
The calculated effective failure rate shall be  $NCT\ 20 \times 10^{-6}$  failures per hour.

SIZE  
A

CODE  
SP

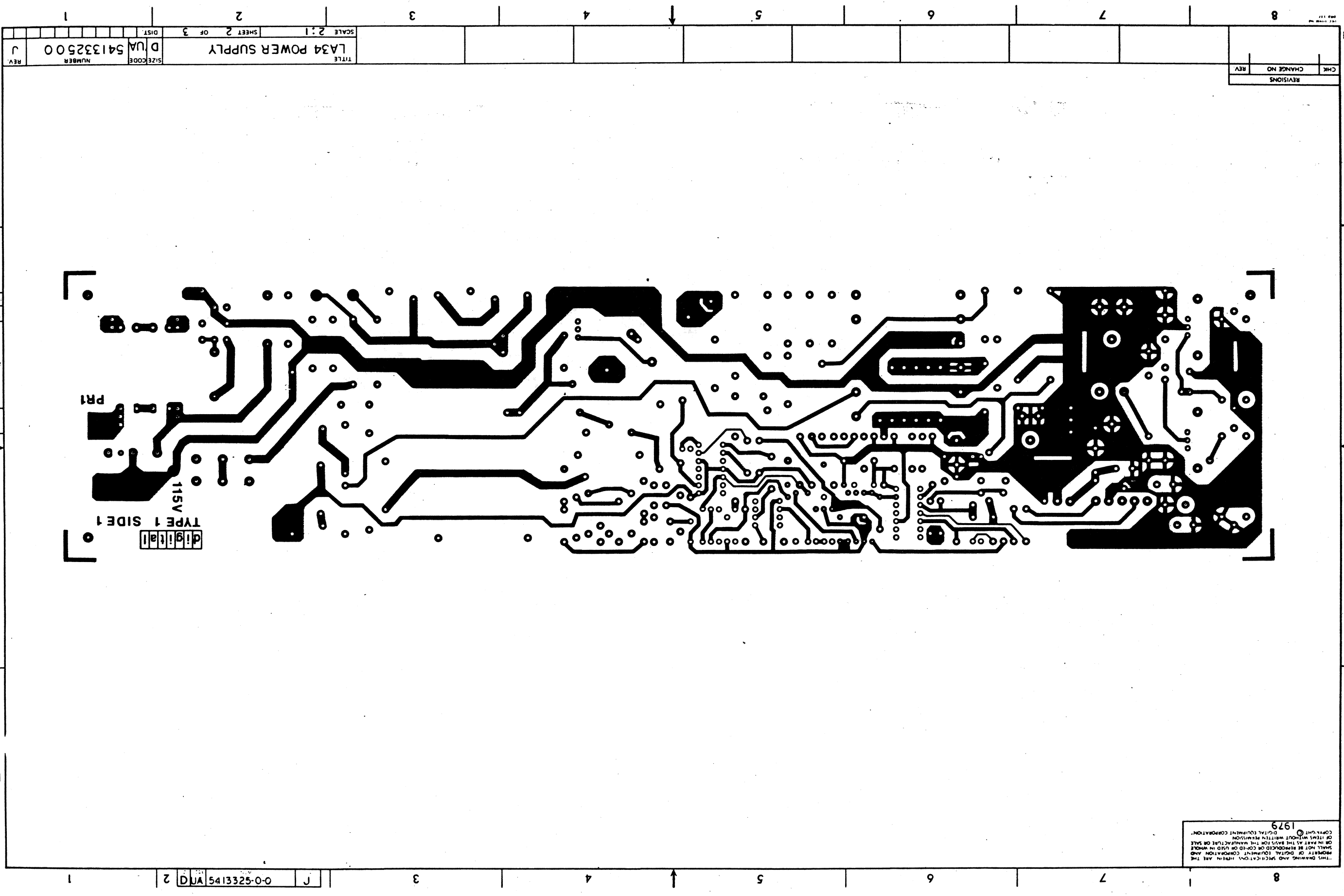
NUMBER  
H7834-0-2

REV



NOTES:  
1. WHEN ASSEMBLING COVER TO CHASSIS  
COVER MUST SLIDE UNDER LIP 24.  
CHASSIS AS SHOWN IN DETAIL A.





1979  
COPYRIGHT © 1979  
DIGITAL EQUIPMENT CORPORATION  
ALL RIGHTS RESERVED  
NO PART OF THIS PUBLICATION  
OR ANY PART OF THE INFORMATION  
CONTAINED HEREIN MAY BE  
REPRODUCED OR TRANSMITTED  
IN ANY FORM OR BY ANY  
MEANS, ELECTRONIC OR  
MECHANICAL, INCLUDING  
PHOTOCOPYING, RECORDING,  
OR BY ANY INFORMATION  
STORAGE AND RETRIEVAL  
SYSTEM, WITHOUT PERMISSION  
IN WRITING FROM DIGITAL  
EQUIPMENT CORPORATION  
AND/OR ITS SUBSIDIARIES

J 0-52325-0-0 DUA 541332500 2

THIS DRAWING AND SPECIFICATIONS HEREIN ARE THE PROPERTY OF DIGITAL EQUIPMENT CORPORATION AND SHALL NOT BE REPRODUCED OR COPIED OR USED IN WHOLE OR IN PART AS THE BASIS FOR THE MANUFACTURE OR SALE OF ITEMS WITHOUT WRITTEN PERMISSION. DIGITAL EQUIPMENT CORPORATION  
1979

SIDE 2  
H7834 P.S.

5013324 D-P3  
5413325

REVISIONS		
CHK	CHANGE NO.	REV.

DEC 1978 108  
DME 117

TITLE  
LA34 POWER SUPPLY

SCALE 2:1 SHEET 3 OF 3

SIZE CODE	NUMBER	REV
D UA	5413325-0-0	J
DIST		