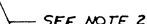


J6-HEAD CABLE

DEC FORM 100

REV	
-----	--

THIS DRAWING AND SPECIFICATIONS, HEREIN, ARE THE PROPERTY OF DIGITAL EQUIPMENT CORPORATION AND SHALL NOT BE REPRODUCED OR COPIED OR USED IN WHOLE OR IN PART AS THE BASIS FOR THE MANUFACTURE OR SALE OF ITEMS WITHOUT WRITTEN PERMISSION.
COPYRIGHT © 1975, DIGITAL EQUIPMENT CORPORATION

CS 5411021-0-1 2

PARTS LIST

QTY	REF DESIGNATIONS	DESCRIPTION	PART NO	ITEM NO
REF		X-Y COORDINATE HOLE LOCATION	K-10-5411021-0-4	1
REF		ASSY/DRILLING HOLE LAYOUT	E-44-5411021-0-5	2
REF		MODULE ECO HISTORY	B-44-5411021-0-6	3
1		ETCHED CIRCUIT BOARD	5311020	4
3	C18, C21, C22	CAP .25UF, 25V, 10% +75% AL EL	1000075-00	5
6	C16, C17, C28, C29-C31	CAP .01UF, 100V 20% DISC	1001610-01	6
1	C19	CAP .22UF, 110V, 10% MYLAR	1000037-00	7
1	C20	CAP 190UF, 12V, 20% AL EL	1009433-00	8
2	C25, C26	CAP 20UF, 50V, 10% +75% AL EL	1002839-00	9
1	C24	CAP 1.5UF, 35V, 10% S.TANT	1009725-00	10
7	C1, C3, C5, C7, C9, C11, C13	CAP 15PF, 100V, 5% D.M.	1002427-00	11
8	C2, C4, C6, C8, C10, C12, C14, C22	CAP .1UF, 100V, 20% DISC	1000030-00	12
1	C23	CAP .33UF, 20V, 10% S.TANT	1005328-00	13
22	D2, D3, D6, D7, D10, D11, D14, D15, D18, D19, D20, D27, D28, D29, D38, D40, D41, D39, D52, D61, D58, D62	DIODE D664	1100114-00	14
2	D31, D33	DIODE IN4744	1105648-00	15
13	D4, D8, D12, D16, D20, D28, D46, D47, D44, D45, D50, D51, D24	DIODE IN4004	1105796-00	16
4	D54 THRU D57	DIODE IN4721	1110182-00	17
1	D53	DIODE BRIDGE 21V	1110714-00	18
4	D29, D35, D59, D60	DIODE .4M 5.1A 21.5V, 1% ZENER	1105873-00	19
2	D32, D34	DIODE IN4733	1110488-00	20
1	D20	DIODE IN4764	1104860-00	21
2	D42, D48	DIODE IN748A	1100122-00	22
4		KEYING PLUG, MATE-N-LOK	1211595-00	23
4	J2, J3, J4, J5	CONN MATE-N-LOK 8 SKT	1209340-00	25
28		SOCKET PC, MATE-N-LOK	1209456-01	26
2	R52, R60	RES 2K, 1/4W, 5%	1302388-00	27
1	R47	RES 39, 1/2W, 5%	1302336-00	28
7	R93 THRU R99	RES 1, 3W, 5% W.W.	1312547-00	29
4	R100 THRU R103	RES 4, 5W, 5% W.W.	1311624-00	30
1	R67	RES 100, 1/4W, 5%	1300229-00	31
1	R76	RES 18, 1/4W, 5%	1302124-00	32
2	R73, R74	RES 100, 10W, 5% W.W.	1310597-00	33
7	R5, R10, R15, R20, R25, R30, R35	RES 100, 1/2W, 5%	1300228-00	34
5	R44, R58, R92, R108, R112	RES 1.5K, 1/4W, 5%	1300391-00	35
1	R84	RES 220, 1/4W, 5%	1300271-00	36
2	R56, R64	RES 150, 2W, 5% W.W.	1305524-00	37
2	R55, R63	RES 150, 5W, 5% W.W.	1301898-00	38
1	R83	RES 270, 1/4W, 5%	1301972-00	39
1	R50	RES 390, 2W, 5%	1301864-00	40
1	R75	RES 270, 2W, 10%	1300288-00	41
1	R82	RES 300, 2W, 5%	1309855-00	42
2	R78, R81	RES 390, 1/4W, 5%	1300309-00	43
1	R79	RES 470, 2W, 5%	1303062-00	44
2	R85, R86	RES 150, 1/4W, 5%	1300250-00	45
2	R51, R59	RES 300, 1/2W, 5%	1300291-00	46
9	R43, R4, R9, R14, R19, R24, R29, R34, R105	RES 1K, 1/4W, 5%	1300365-00	47

PARTS LIST

QTY	REF DESIGNATIONS	DESCRIPTION	PART NO	ITEM NO
2	R45, R48	RES 560, 1W, 5%	1303048-00	48
3	R77, R80, R91	RES 3.9K, 1/4W, 5%	1300444-00	49
2	R40, R49	RES 5.1K, 1/4W, 5%	1300447-00	50
3	R53, R61, R66	RES 10K, 1/4W, 5%	1300479-00	51
2	R88, R89	RES 464, 1/4W, 1%	1303047-00	52
2	R87, R90	RES 619, 1/4W, 1%	1305126-00	53
15	R3, R8, R13, R18, R23, R33, R38, R28, R39, R46, R49, R54, R57, R65, R68	RES 970, 1/4W, 5%	1300316-00	54
1	R40	RES 820, 1/2W, 10%	1300356-00	55
1	R36	RES 3K, 1/4W, 5%	1300932-00	56
5	R2, R7, R17, R27, R32	RES 75K, 1/4W, 1%	1305322-00	57
1	R41	RES 1.78K, 1/4W, 1%	1302612-00	58
5	R1, R6, R16, R26, R31	RES 2.94K, 1/4W, 1%	1301981-00	59
1	R42	RES 3.83K, 1/4W, 1%	1309413-00	60
2	R11, R21	RES 2.32K, 1/4W, 1%	1312545-00	61
9	Q3, Q6, Q9, Q12, Q15, Q18, Q23, Q24, Q21	TRANS 2N3716	1503069-00	62
2	Q42, Q43	TRANS 3715	1503068-00	63
1	Q51	TRANS 2N3791	1509561-00	64
2	Q38, Q39	TRANS 6531B	1509338-00	65
6	Q26, Q36, Q39, Q47, Q48, Q33	TRANS MPS 405	1510705-00	66
13	Q37, Q35, Q1, Q4, Q7, Q10, Q13, Q16, Q19, Q27, Q22, Q45, Q46	TRANS MPS 455	1510706-00	67
5	Q41, Q28, Q30, Q49, Q32	TRANS TIP31A	1512590-00	68
4	Q40, Q29, Q31, Q50	TRANS TIP32A	1512589-00	69
7	Q2, Q5, Q8, Q11, Q14, Q17, Q20	TRANS D45HB	1510708-00	70
2	E9, E10	IC 7402	1909004-00	71
1	E8	IC LM309K REGULATOR	1910460-00	72
7	E1 THRU E7	IC LM301A OP AMP	1910282-00	73
1	J6	H802 18 PIN (MODIFIED)	5510831-00	74
2		RIVET, POP	9006460-00	75
1		HEAT SINK	7413424-00	76
4		FUSE CLIP	9009513-01	77
8		WASHER (MATE-N-LOK STANDOFF)	9006693-00	78
8		EYELET	9006732-00	79
2	F1, F2	FUSE 3 AMP SLO BLO	9007218-00	80
2		FASTON TAB	9007113-00	81
2		EYELET	9009000-00	82
26		SCREW PPH 4-90X1/2	9006013-01	83
35		NUT, KEP 4-40	9006557-00	84
1		SCREW, PPH 6-32 X15/16	9007838-01	85
1		NUT, KEP 6-32	9006560-00	86
1		CABLE, POWER BOARD	C-AD-7010363-1	87
13		INSULATOR, TO-3	9006721-00	88
9		INSULATOR	9009597-00	89
41		COMPOUND, THERMAL JOINT	9008268-00	90
9		SCREW PPH 4-90 X7/16	9006012-01	91
7	F3 THRU F9	FUSE, PICO, 2 AMP	1211751-00	92
1		LABEL	3611567-00	93
5	R104, R106, R110, R114, R116	RES 1.8K, 1/4W, 5%	1300398-00	94
2	R12, R22	RES 16.5K, 1/4W, 1%	1312546-00	95
14"	WIRE	WIRE AWG 14, GREEN	9107370-55	96
2	R70, R71	RES. 60, 10W, 5%	1312997	97

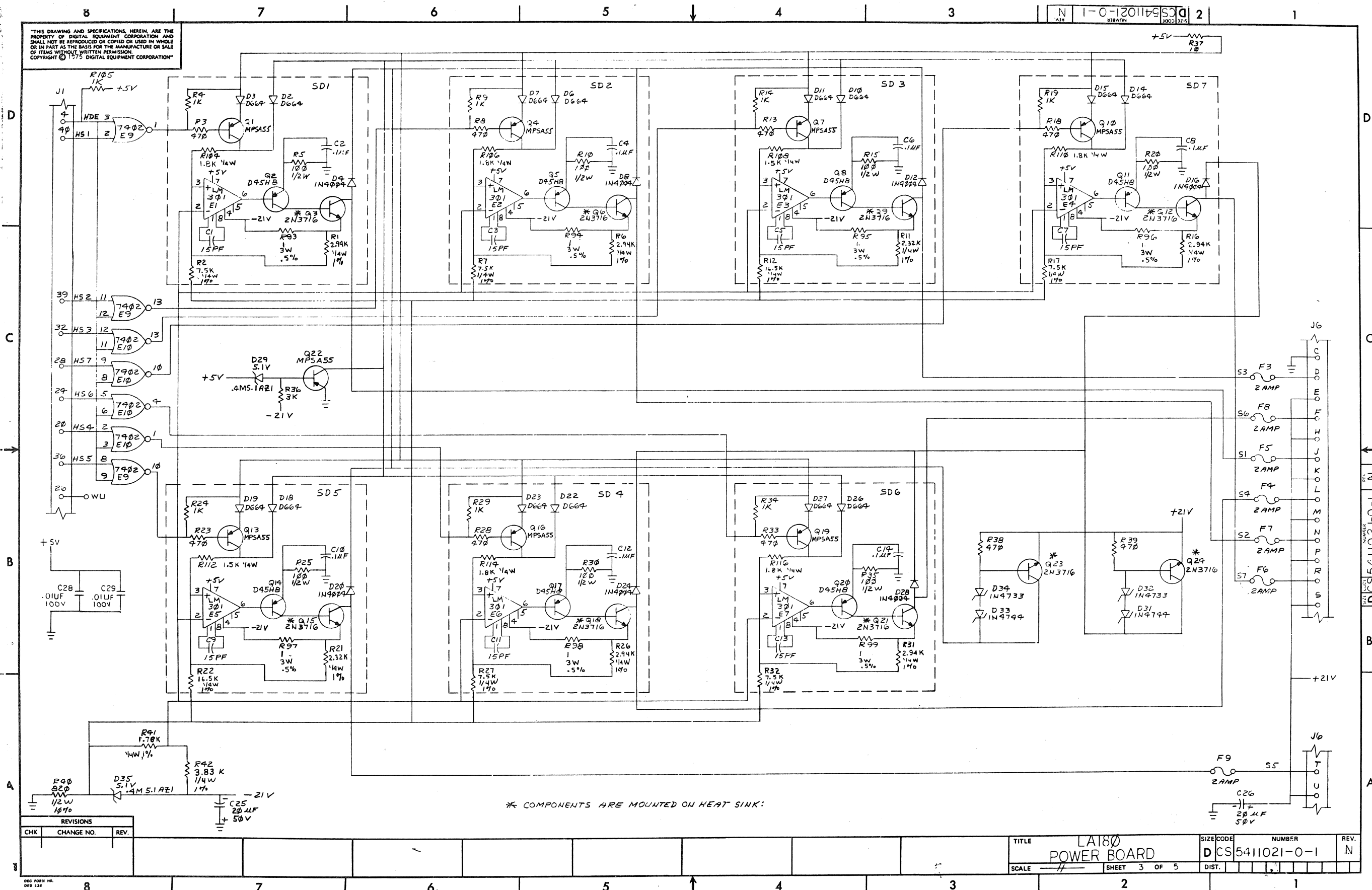
PARTS LIST

QTY	REF. DESIGNATION	DESCRIPTION	PART NO.	ITEM NO
1	R37	RES 10, 1/4W, 5%	1301317-00	98
2	R117, R118	RES 100, 1/4W, 5%	1310881-03	99
1		LABEL, ADHESIVE BACKED, PRINTED	3613307-0-0	100

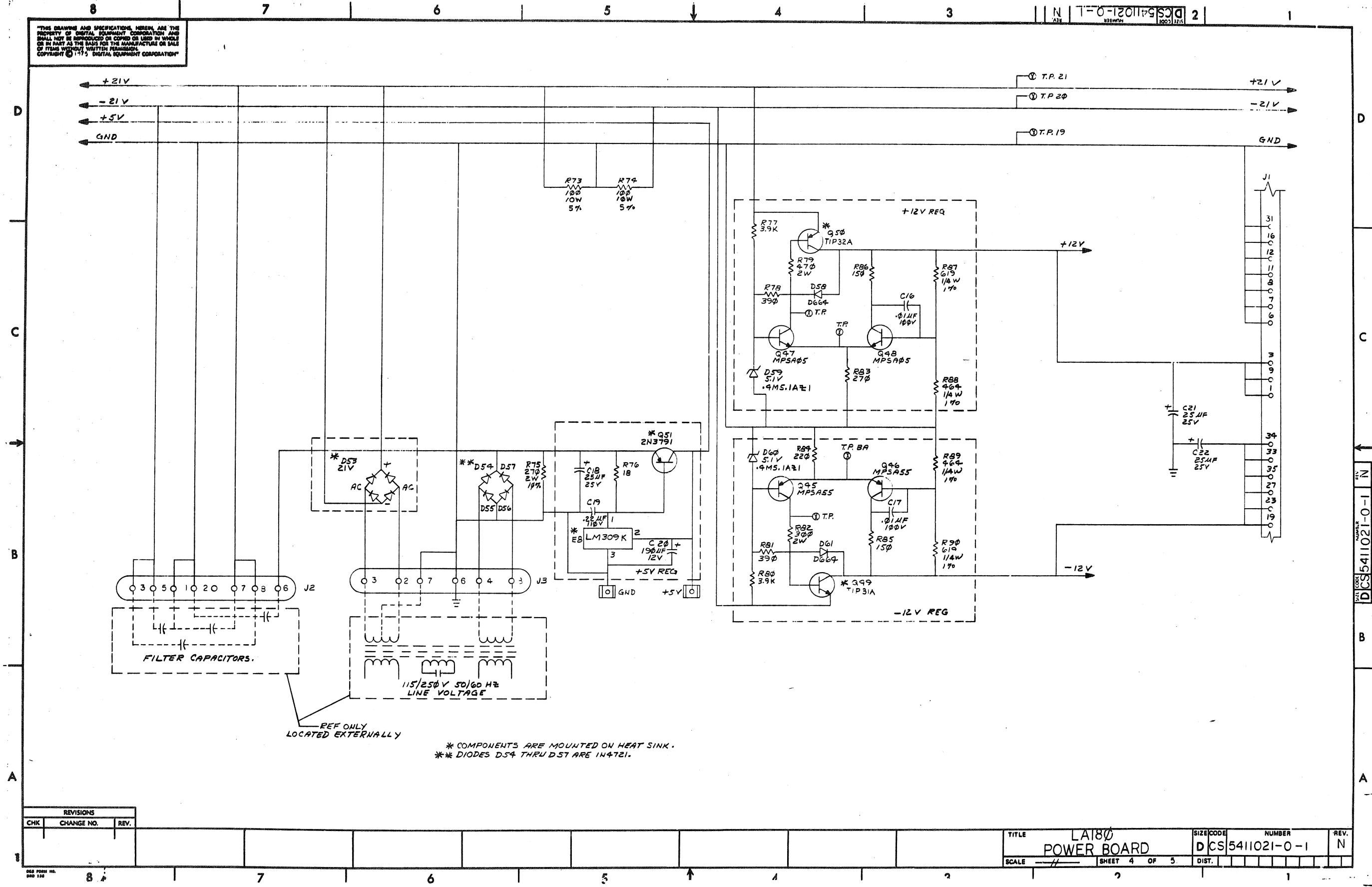
REVISIONS		
CHK	CHANGE NO	REV

TITLE		SIZE CODE	NUMBER	REV.
LA180 POWER BOARD		D CS	5411021-0-1	N
SCALE	SHEET 2 OF 5	DIST.		

"THIS DRAWING AND SPECIFICATIONS, HEREIN, ARE THE PROPERTY OF DIGITAL EQUIPMENT CORPORATION AND SHALL NOT BE REPRODUCED OR COPIED OR USED IN WHOLE OR IN PART AS THE BASIS FOR THE MANUFACTURE OR SALE OF ITEMS WITHOUT WRITTEN PERMISSION.
COPYRIGHT © 1975 DIGITAL EQUIPMENT CORPORATION"



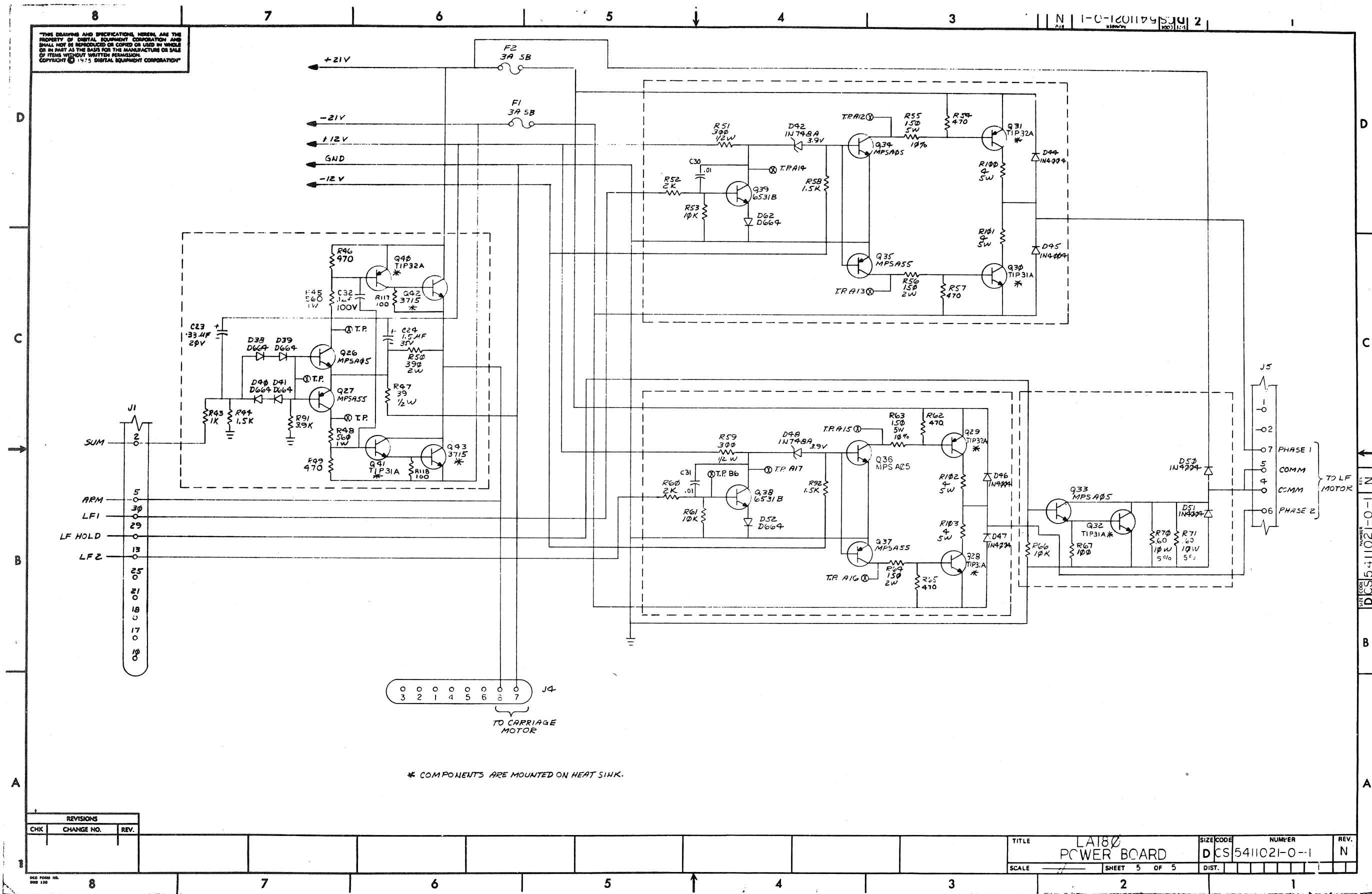
THIS DRAWING AND SPECIFICATIONS HEREIN ARE THE PROPERTY OF DIGITAL EQUIPMENT CORPORATION AND SHALL NOT BE REPRODUCED OR COPIED OR USED IN WHOLE OR IN PART AS THE BASIS FOR THE MANUFACTURE OR SALE OF ITEMS WITHOUT WRITTEN PERMISSION. COPYRIGHT © 1975 DIGITAL EQUIPMENT CORPORATION



REVISIONS		
CHK	CHANGE NO.	REV.

TITLE		SIZE CODE	NUMBER	REV.
LA180		D	CS5411021-0-1	N
POWER BOARD				
SCALE		SHEET 4 OF 5	DIST.	

THIS DRAWING AND SPECIFICATIONS HEREIN ARE THE PROPERTY OF DIGITAL EQUIPMENT CORPORATION AND SHALL NOT BE REPRODUCED OR COPIED OR USED IN WHOLE OR IN PART AS THE BASIS FOR THE MANUFACTURE OR SALE OF ITEMS WITHOUT WRITTEN PERMISSION. COPYRIGHT © 1975 DIGITAL EQUIPMENT CORPORATION



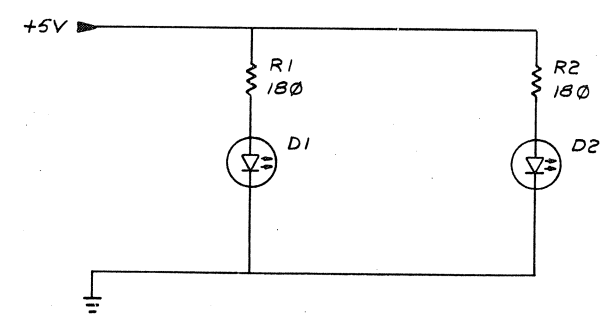
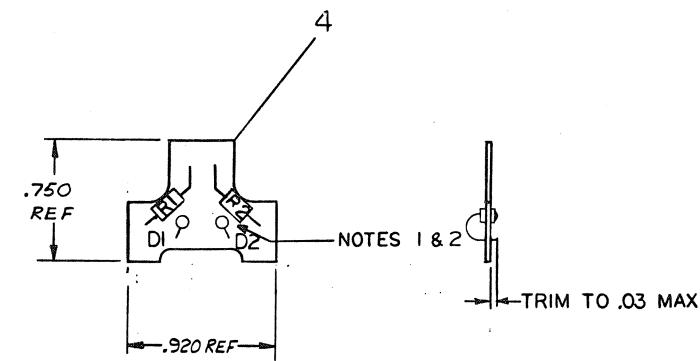
REVISIONS		
CHK	CHANGE NO.	REV.

TITLE		LA180 POWER BOARD	SIZE CODE		NUMBER	REV.
SCALE		SHEET 5 OF 5	DIST.		1	N

This drawing and specifications, herein, are the property of Digital Equipment Corporation and shall not be reproduced or used in whole or in part as the basis for the manufacture or sale of items without written permission.

COPYRIGHT © 1974 DIGITAL EQUIPMENT CORPORATION

- NOTES:
1. HEAT APPLIED TO D1 AND D2 DURING SOLDERING SHALL NOT EXCEED 285°C FOR A PERIOD OF 15 SECONDS.
 2. FINISHED HOLE SIZE FOR MOUNTING D1 AND D2 SHALL BE .078 MIN. .083 MAX



REF	DESCRIPTION	ITEM NO.
REF	X-Y COORDINATE HOLE LOCATION	K-00-5410991-0-4 1
REF	ASSY/DRILLING HOLE LAYOUT	D-AH-5410991-0-5 2
REF	MODULE ECO HISTORY	B-MH-5410991-0-6 3
1	ETCHED CIRCUIT BOARD	DIA-5010790-0-0 4
2	RES 180 1/4W 5%	1301322 5
2	D1, D2	LIGHT EMITTING DIODE 1111907 6

QTY	REF DESIGNATION	DESCRIPTION	PART NO.	ITEM NO.
PARTS LIST				
ETCH BOARD REV B				
DRN: J. BITTO 11/72				
CHKD: J. BITTO 11/72				
ENG: J. BITTO 11/72				
PROG. ENG: J. BITTO 11/72				
PROD: J. BITTO 11/72				
NEXT HIGHER ASSY				
SCALE: 1 OF 1				
SHEET: 1 OF 1				
TITLE: LA36 ENCODER PC BOARD LED				
SIZE CODE: DCS 5410991-0-1 C				
REV. C				

REV	CHANGE NO.	DATE
1	1	11/72
2	2	11/72
3	3	11/72
4	4	11/72
5	5	11/72
6	6	11/72
7	7	11/72
8	8	11/72
9	9	11/72
10	10	11/72

DEC NO.	EIA NO.	DEC NO.	EIA NO.
1	1	2	2
3	3	4	4
5	5	6	6
7	7	8	8
9	9	10	10

BRUNING 40-107 15888

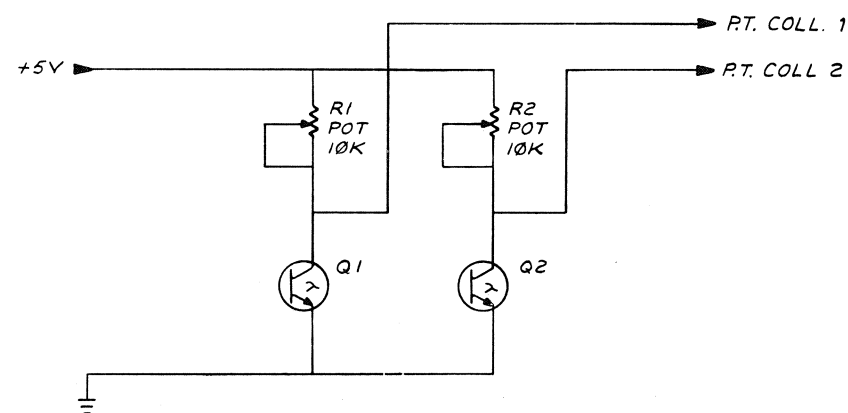
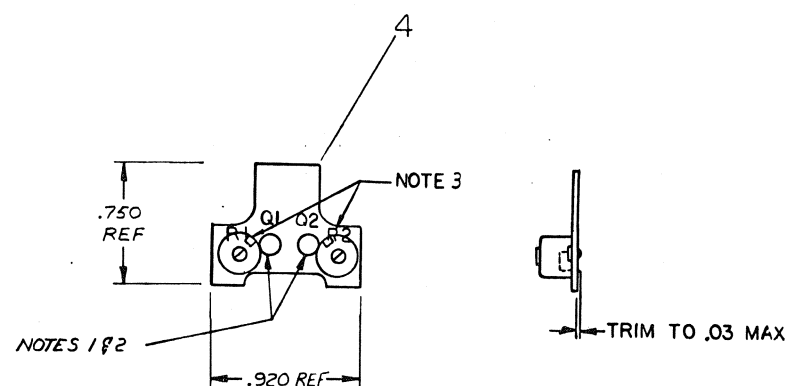
DEC FORM NO. DRD-133

This drawing and specifications herein are the property of Digital Equipment Corporation and shall not be reproduced or copied or used in whole or in part as the basis for the manufacture or sale of items without written permission.

COPYRIGHT © 1974 DIGITAL EQUIPMENT CORPORATION

NOTES:

1. HEAT APPLIED TO Q1 AND Q2 DURING SOLDERING SHALL NOT EXCEED 285° C FOR A PERIOD OF 15 SECONDS.
2. FINISHED HOLE SIZE FOR MOUNTING Q1 AND Q2 SHALL BE .078 MIN., .083 MAX.
3. R1 AND R2 MUST BE ORIENTED AS SHOWN, WITH NOTCH TOWARD CENTER OF BOARD.



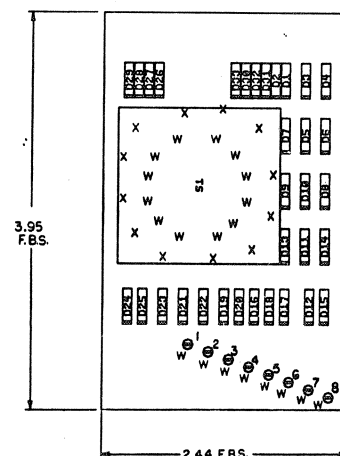
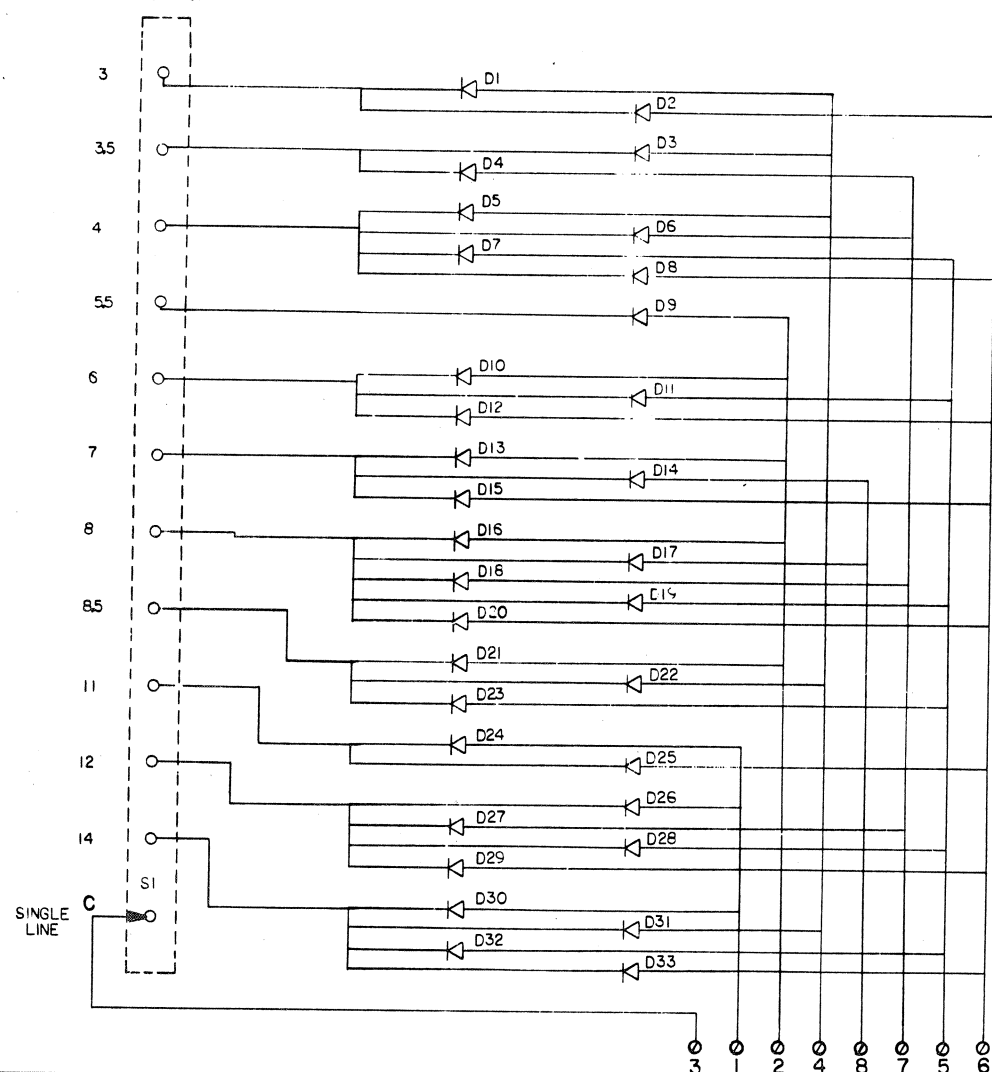
REF		X-Y COORDINATE HOLE LOCATION	K-CO-5411049-0-4	1
REF		ASSY/DRILLING HOLE LAYOUT	D-AH-5411049-0-5	2
REF		MODULE ECO HISTORY	B-MH-5411049-0-6	3
REF		ETCHED CIRCUIT BOARD	D-1A-5010750-0-0	4
2	R1, R2	POTENTIOMETER 10K	1309150-12	5
2	Q1, Q2	PHOTOTRANSISTOR	1511906	6

QTY	REF DESIGNATION	DESCRIPTION	PART NO.	ITEM NO.
PARTS LIST				
ETCH BOARD REV B				
DRN	DATE	EQUIPMENT CORPORATION		
CHK'D	DATE	MAYNARD, MASSACHUSETTS		
ENG	DATE	TITLE		
PRD	DATE	LA36		
PROD	DATE	ENCODER PC BOARD		
NEXT HIGHER ASSY		PHOTOTRANSISTOR		
DEC NO.	EIA NO.	DEC NO.	EIA NO.	REV.
SEMICONDUCTOR CONVERSION CHART				C
SCALE				1
SHEET 1 OF 1				

"THIS DRAWING AND SPECIFICATIONS, HEREIN, ARE THE PROPERTY OF DIGITAL EQUIPMENT CORPORATION AND SHALL NOT BE REPRODUCED OR COPIED OR USED IN WHOLE OR IN PART AS THE BASIS FOR THE MANUFACTURE OR SALE OF ITEMS WITHOUT WRITTEN PERMISSION.
COPYRIGHT © 1975 DIGITAL EQUIPMENT CORPORATION"

NOTES:

FORM SWITCH



8		SPLIT LUG	9006735-00	7
33	D1-D33	DIODE D664	1100114-00	6
1	S1	SWITCH, SINGLE POLE-12 POSITION	1212443-00	5
1		ETCHED CIRCUIT BOARD	C-MD-5011652-00	4
REF		MODULE ECO HISTORY	B-MH-5411653-0-6	3
REF		ASSY/DRILLING HOLE LAYOUT	D-AH-5411653-0-5	2
REF		X-Y COORDINATE HOLE LOCATION	K-CO-5411653-0-4	1
QTY	REF. DESIGNATION	DESCRIPTION	PART NO.	ITEM NO.

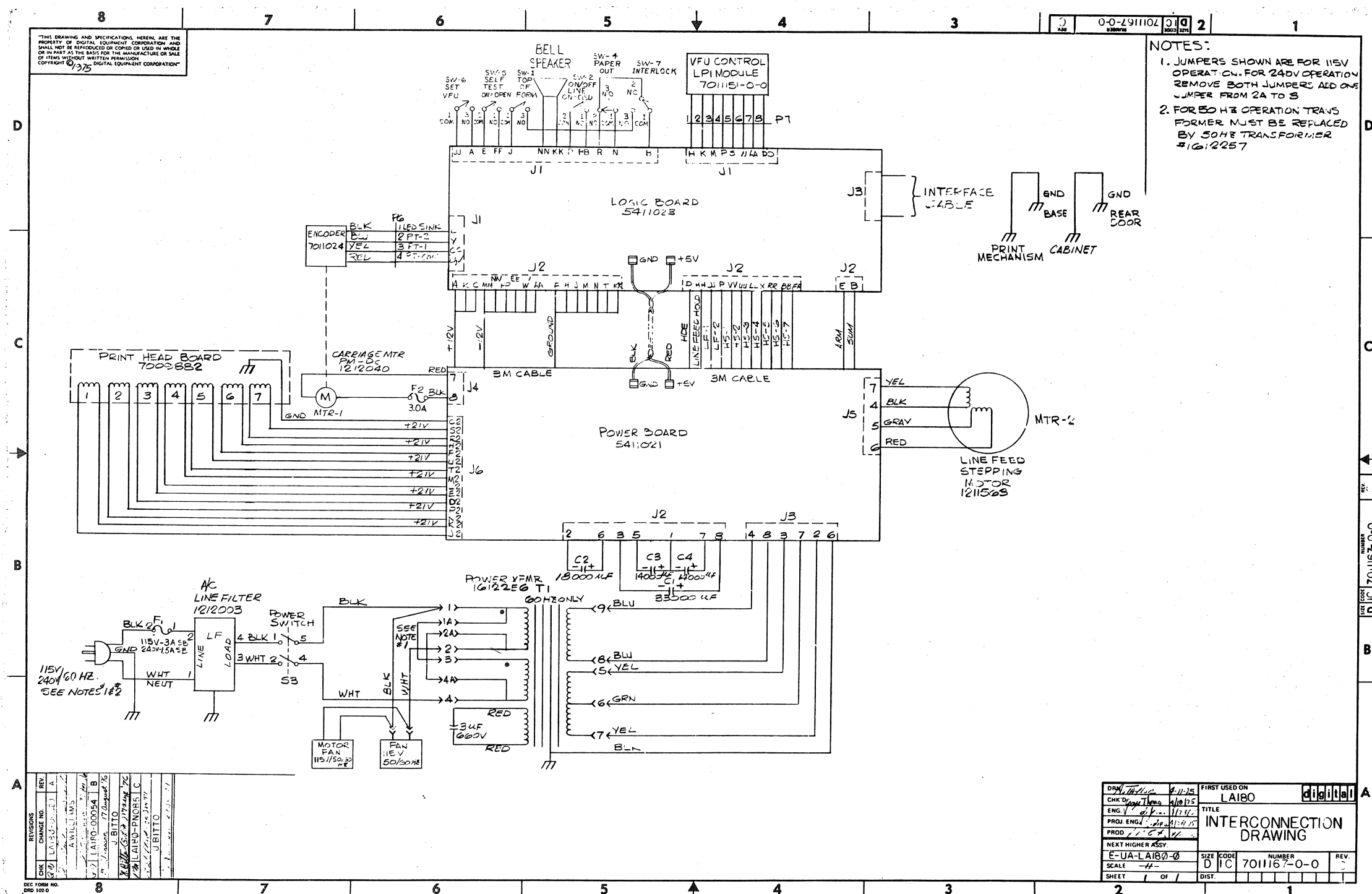
FIRST USED ON OPTION MODEL
LA180

PARTS LIST			
ETCH BOARD REV.	A	DATE	7/2/75
DRN.	1/1/75	DATE	7/2/75
CHKD.	1/1/75	DATE	7/2/75
PRD.	1/1/75	DATE	7/2/75
PROJ. ENG.	1/1/75	DATE	7/2/75
PROD.	1/1/75	DATE	7/2/75
NEXT HIGHER ASSY			
DEC NO.	EIA NO.	DEC NO.	EIA NO.
SCALE	NONE	SCALE	NONE
SHEET	1	OF	1
SIZE	CODE	NUMBER	REV.
D	CS	5411653-0-1	*

SEMICONDUCTOR CONVERSION CHART

digital
6 LPI FORM
CONTROL

IC TYPE	GND	+5V
GND AND 5V ARE USUALLY PIN 7 AND 14 RESPECTIVELY EXCEPTIONS ARE STATED ABOVE		
IC PIN LOCATIONS		



DIGITAL EQUIPMENT CORPORATION
MAYNARD MASSACHUSETTS

PACKAGING INSTRUCTION

DECwriter

REV: A B DATE: 7/75 1/76

Quantity

Purchase Specification No.

Description

1

9905601

Stitched Tube

1

9905601-01

Full Telescope Cap

1

9905630

Pad with Foam (LA36/LA35 only)

1

9905129-39

Poly Bag

1

9905651

Wood Skid

1

9905651-01

Wood Brace (2 X 3)

1

9905288

Tee Nut

2

9909290-03

3/8-16 X 3 Hex-Head Bolt

1

36-12-20-0-0

Caution Tag

1

9909634

Stain Resistant Tape (3M)

1

9907032

Panduit Cable Tie

20 ft

9905734-02

Polypropylene Strapping

1

9905129-35

Poly Bag

PACKAGING INSTRUCTIONS

Procedure

Step

1. Lift the cover and slide the print head to the left as far as it will go. Slip the Panduit Cable Tie (9907032) around the ribbon rollers (A and B). Do not over-tighten. Fasten Caution Tag (36-12-20-0-0) to tractor drive shaft. Close cover.

2. Place Pad with Foam (9905630) (foam side down) on top of the LA36/LA35 keyboard. Tape with two (2) strips of glass filament tape (9909634). Tape back door closed, using two (2) strips of tape.

3. Place DECwriter on top of Skid Deck (9905651).

4. Place all hardware and software into Poly Bag (9905129-35) and staple to deck of skid.

5. Place one strip of CW21 (Custom Wrap) or Microfoam, over each leg of the DECwriter.

6. Place Wood Brace (9905651-01) on top of legs *or far back as it will go* to properly align the bolt holes.

7. Place Hex-Head Bolts (9909290-03) through the bolt holes in the wood brace; place the Tee Nuts (9905288) up and underneath the skid deck; then tighten down.

8. Place a Poly Bag (9905129-39) over the DECwriter. Then, place the Stitched Tube (9905601) over and around the unit. Assemble Full Telescope Cap (9905601-01) and place on top of Stitched Tube.

NOTE
Make sure that the Stitched Tube is resting on the wood skid base, on all 4 sides.

9. Strap in two places as shown in Figure 2. Use Polypropylene strapping (9905734-02).

ENG
Ken Newman
12/24/75
APPD
W.D. Newman

SIZE
A

CODE
SP

NUMBER
3700131-0-0

REV
B

SHEET 1 OF 3

DEC 8-1551-1031-1-8671

DRA - 129

PACKAGING INSTRUCTION

DECwriter

REV: DATE:

CAUTION TAG
(36-12-20-0-0)

TRACTOR DRIVE SHAFT

RIBBON ROLLER "B"

PRINT HEAD

KEY PROTECTOR
(9905639)

3/4" GLASS FILAMENT TAPE
(9909634)

ROLLER "A"

CABLE TIE
(9907032)

NOTE:
Make changes to "C" size original only and rephotograph.

ENG.

APPD.

SIZE
A

CODE
SP

NUMBER
3700131-0-0

REV
B

SHEET 2 OF 3

DEC-108

PACKAGING INSTRUCTION

DECwriter

REV: DATE:

FULL TELESCOPE CAP
(9905601-01)

STITCHED TUBE
(9905601)

(2) HEX HEAD BOLTS
(9909290-03)

POLYBAG
(9905129-39)

WOOD BRACE
(9905651-01)

WOOD SKID
(9905651)

MICROFOAM

TEE NUT
(9905288)

LA 36

NOTE:
Make changes to "C" size original only and rephotograph.

ENG.
Ken Newman
12/24/75
APPD
W.D. Newman

SIZE
A

CODE
SP

NUMBER
3700131-0-0

REV
B

SHEET 3 OF 3

DEC-108

THIS IS PRINT SET

--	--	--	--

SEQUENCE

B-DD-LAXX-KJ
E-UA-LAXX-KJ-Ø
A-SP-LAXX-KJ-2

[illegible]

REVISIONS		REV								
		CHG. NO.								
		DATE								
		USED ON OPTION/MODEL								
		DRN. D. GILLEY								
		DATE 10/8/75								
LABC			CHK'D.		DATE	TITLE COMPRESSED FONT				
			PROJ ENG.		DATE	SIZE CODE NUMBER REV B DD LAXX-KJ				
			P. E. / Jan		10-17-75					
			PROD.		DATE	DIST				
			10-17-75							
			FIELD SERV.		DATE					
			Alt. Service		10-17-75					
			SHEET 1 OF 2							

