

U6-HEAD CABLE

DEC FORM 100
 FEB 1958 E

REV	
-----	--

"THIS DRAWING AND SPECIFICATIONS HEREIN ARE THE PROPERTY OF DIGITAL EQUIPMENT CORPORATION AND SHALL NOT BE REPRODUCED OR COPIED OR USED IN WHOLE OR IN PART AS THE BASIS FOR THE MANUFACTURE OR SALE OF ITEMS WITHOUT WRITTEN PERMISSION. COPYRIGHT © 1975, DIGITAL EQUIPMENT CORPORATION"

CS 5411021-0-1

PARTS LIST

QTY	REF DESIGNATIONS	DESCRIPTION	PART NO.	ITEM NO.
REF		X-Y COORDINATE HOLE LOCATION	K-10-5411021-0-4	1
REF		ASSY DRILLING HOLE LAYOUT	E-44-5411021-0-5	2
REF		MODULE ECO HISTORY	B-44-5411021-0-6	3
1		ETCHED CIRCUIT BOARD	5311020	4
3	C18, C21, C22	CAP .25UF, 25V, 10% +75% AL EL.	1000075-00	5
6	C16, C17, C28, C29-C31	CAP .01UF, 100V 20% DISC	1001610-01	6
1	C19	CAP .22UF, 110V, 10% MYLAR	1000037-00	7
1	C20	CAP 190UF, 12V, 20% AL EL.	1009433-00	8
2	C25, C26	CAP 20UF, 50V, 10% +75% AL EL.	1002839-00	9
1	C29	CAP 1.5UF, 35V, 10% S.TANT	1009725-00	10
7	C1, C3, C5, C7, C9, C11, C13	CAP 15PF, 100V, 5% D.M.	1002427-00	11
8	C2, C4, C6, C8, C10, C12, C14, C32	CAP .1UF, 100V, 20% DISC	1000030-00	12
1	C23	CAP .33UF, 20V, 10% S.TANT	1005328-00	13
22	D2, D3, D6, D7, D10, D11, D14, D15, D18, D19, D26, D27, D28, D29, D38, D40, D41, D39, D52, D61, D58, D62	DIODE D664	1100114-00	14
2	D31, D33	DIODE IN4744	1105648-00	15
13	D4, D8, D12, D16, D20, D28, D36, D37, D44, D45, D50, D51, D24	DIODE IN4004	1105796-00	16
4	D54 THRU D57	DIODE IN4721	1110182-00	17
1	D53	DIODE BRIDGE 21V	1110714-00	18
4	D29, D35, D59, D60	DIODE .4M 5.1A 21.5V, 1% ZENER	1105873-00	19
2	D32, D34	DIODE IN4733	1110488-00	20
1	D20	DIODE IN4764	1104860-00	21
2	D42, D48	DIODE IN748A	1100122-00	22
4		KEYING PLUG, MATE-N-LOK	1211595-00	23
4	J2, J3, J4, J5	CONN MATE-N-LOK B SKT	1209340-00	25
28		SOCKET PC, MATE-N-LOK	1209456-01	26
2	R52, R60	RES 2K, 1/4W, 5%	1302388-00	27
1	R47	RES 39, 1/2W, 5%	1302336-00	28
7	R93 THRU R99	RES 1, 3W, 5% W.W.	1312547-00	29
4	R100 THRU R103	RES 4, 5W, 5% W.W.	1311624-00	30
1	R67	RES 100, 1/4W, 5%	1300229-00	31
1	R76	RES 18, 1/4W, 5%	1302124-00	32
2	R73, R74	RES 100, 10W, 5% W.W.	1310597-00	33
7	R5, R10, R15, R20, R25, R30, R35	RES 100, 1/2W, 5%	1300228-00	34
5	R44, R58, R92, R108, R112	RES 1.5K, 1/4W, 5%	1300391-00	35
1	R84	RES 220, 1/4W, 5%	1300271-00	36
2	R56, R64	RES 150, 2W, 5% W.W.	1305524-00	37
2	R55, R63	RES 150, 5W, 5% W.W.	1301898-00	38
1	R83	RES 270, 1/4W, 5%	1301972-00	39
1	R50	RES 390, 2W, 5%	1301864-00	40
1	R75	RES 270, 2W, 10%	1300288-00	41
1	R82	RES 300, 2W, 5%	1309855-00	42
2	R78, R81	RES 390, 1/4W, 5%	1300309-00	43
1	R79	RES 470, 2W, 5%	1303062-00	44
2	R85, R86	RES 150, 1/4W, 5%	1300250-00	45
2	R51, R59	RES 300, 1/2W, 5%	1300291-00	46
9	R43, R4, R9, R14, R19, R24, R29, R34, R105	RES 1K, 1/4W, 5%	1300365-00	47

PARTS LIST

QTY	REF DESIGNATIONS	DESCRIPTION	PART NO.	ITEM NO.
2	R45, R48	RES 560, 1W, 5%	1303048-00	48
3	R77, R80, R91	RES 3.9K, 1/4W, 5%	1300444-00	49
2	R40, R49	RES 5.7K, 1/4W, 5%	1300447-00	50
3	R53, R61, R66	RES 10K, 1/4W, 5%	1300479-00	51
2	R88, R89	RES 464, 1/4W, 1%	1303047-00	52
2	R87, R90	RES 619, 1/4W, 1%	1305126-00	53
15	R3, R8, R13, R18, R23, R33, R38, R28, R39, R46, R49, R54, R57, R62, R65	RES 970, 1/4W, 5%	1300316-00	54
1	R40	RES 820, 1/2W, 10%	1300356-00	55
1	R36	RES 3K, 1/4W, 5%	1300932-00	56
5	R2, R7, R17, R27, R32	RES 75K, 1/4W, 1%	1305322-00	57
1	R41	RES 1.78K, 1/4W, 1%	1302612-00	58
5	R1, R6, R16, R26, R31	RES 2.94K, 1/4W, 1%	1301981-00	59
1	R42	RES 3.83K, 1/4W, 1%	1309413-00	60
2	R11, R21	RES 2.32K, 1/4W, 1%	1312545-00	61
9	Q3, Q6, Q9, Q12, Q15, Q18, Q23, Q24, Q21	TRANS 2N3716	1503069-00	62
2	Q42, Q43	TRANS 3715	1503068-00	63
1	Q51	TRANS 2N3791	1509561-00	64
2	Q38, Q39	TRANS 6531B	1509338-00	65
6	Q26, Q36, Q39, Q47, Q48, Q33	TRANS MPS 405	1510705-00	66
13	Q37, Q35, Q1, Q4, Q7, Q10, Q13, Q16, Q19, Q27, Q22, Q45, Q46	TRANS MPS 455	1510706-00	67
5	Q41, Q28, Q30, Q49, Q32	TRANS TIP31A	1512590-00	68
4	Q40, Q29, Q31, Q50	TRANS TIP32A	1512589-00	69
7	Q2, Q5, Q8, Q11, Q14, Q17, Q20	TRANS D45HB	1510708-00	70
2	E9, E10	IC 7402	1909004-00	71
1	E8	IC LM309K REGULATOR	1910460-00	72
7	E1 THRU E7	IC LM301A OP AMP	1910282-00	73
1	J6	H802 18 PIN (MODIFIED)	5510831-00	74
2		RIVET, POP	9006460-00	75
1		HEAT SINK	7413424-00	76
4		FUSE CLIP	9009513-01	77
8		WASHER (MATE-N-LOK STANDOFF)	9006693-00	78
8		EYELET	9006732-00	79
2	F1, F2	FUSE 3 AMP SLO BLO	9007218-00	80
2		FASTON TAB	9007113-00	81
2		EYELET	9009000-00	82
26		SCREW PPH 4-90X1/2	9006013-01	83
35		NUT, KEP 4-40	9006557-00	84
1		SCREW, PPH 6-32 X15/16	9007838-01	85
1		NUT, KEP 6-32	9006560-00	86
1		CABLE, POWER BOARD	C-AD-7010363-1	87
13		INSULATOR, TO-3	9006721-00	88
9		INSULATOR	9009597-00	89
41		COMPOUND, THERMAL JOINT	9008268-00	90
9		SCREW PPH 4-90 X 7/16	9006012-01	91
7	F3 THRU F9	FUSE, PICO, 2 AMP	1211751-00	92
1		LABEL	3611567-00	93
5	R104, R106, R110, R114, R116	RES 1.8K, 1/4W, 5%	1300398-00	94
2	R12, R22	RES 16.5K, 1/4W, 1%	1312546-00	95
14"	WIRE	WIRE AWG 14 GREEN	9107370-55	96
2	R70, R71	RES 60, 10W, 5%	1312997	97

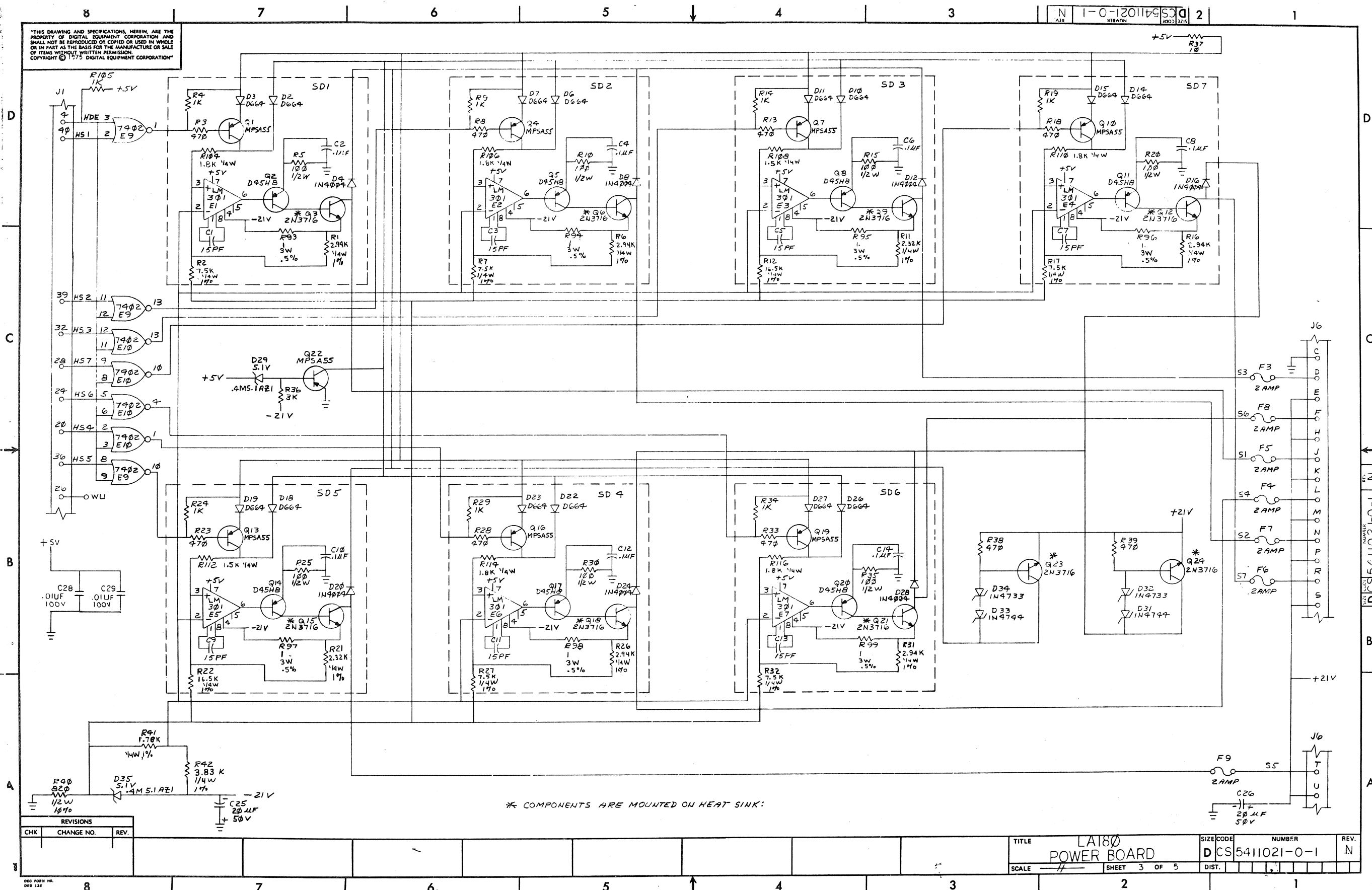
PARTS LIST

QTY	REF. DESIGNATION	DESCRIPTION	PART NO.	ITEM NO.
1	R37	RES 10, 1/4W, 5%	1301317-00	98
2	R117, R118	RES 100, 1/4W, 5%	1310881-03	99
1		LABEL, ADHESIVE BACKED, PRINTED	3613307-0-0	100

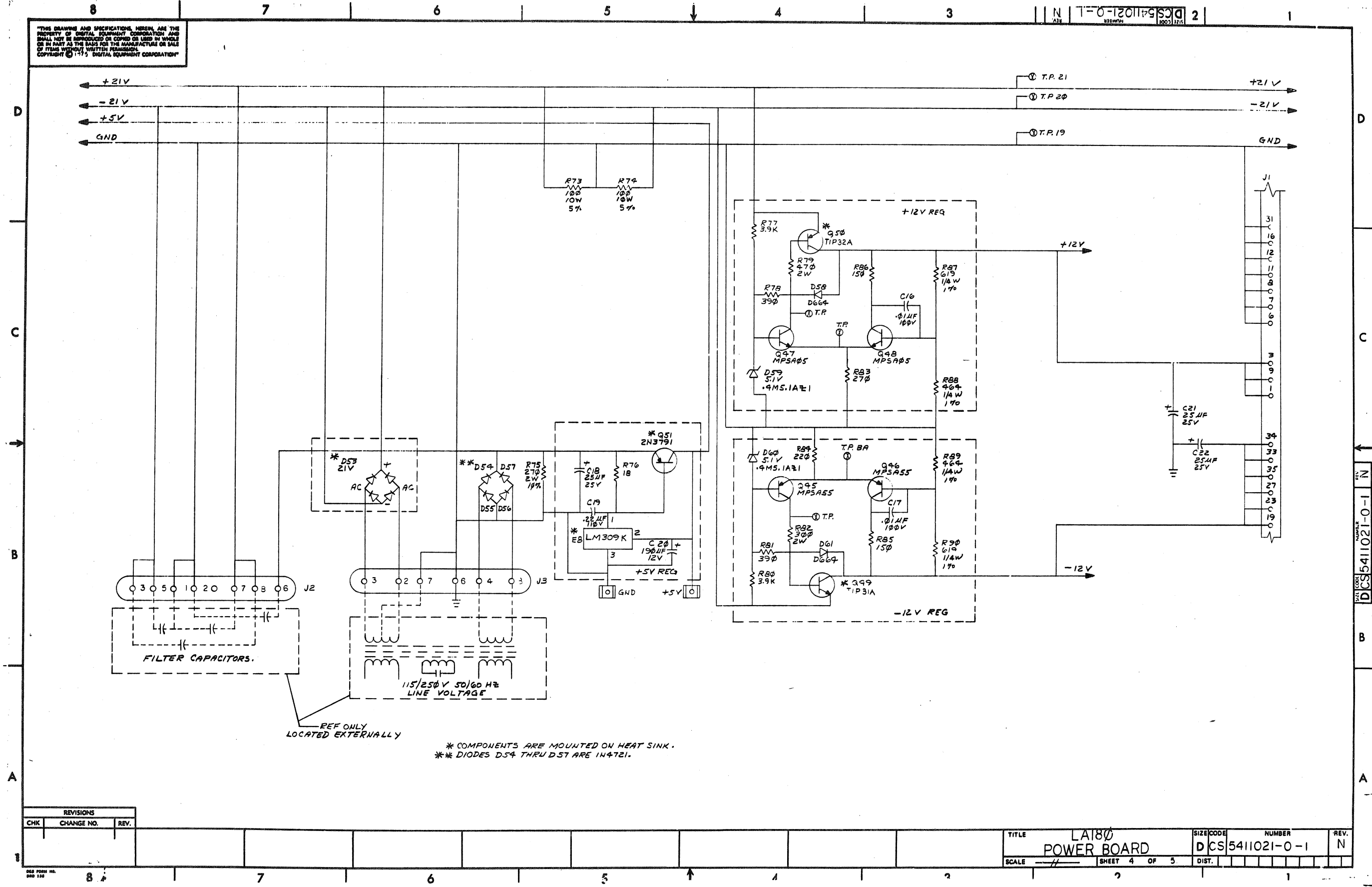
REVISIONS		
CHK	CHANGE NO.	REV.

TITLE		SIZE CODE	NUMBER	REV.
LA180 POWER BOARD		D CS	5411021-0-1	N
SCALE	SHEET 2 OF 5	DIST.		

"THIS DRAWING AND SPECIFICATIONS, HEREIN, ARE THE PROPERTY OF DIGITAL EQUIPMENT CORPORATION AND SHALL NOT BE REPRODUCED OR COPIED OR USED IN WHOLE OR IN PART AS THE BASIS FOR THE MANUFACTURE OR SALE OF ITEMS WITHOUT WRITTEN PERMISSION. COPYRIGHT © 1975 DIGITAL EQUIPMENT CORPORATION"



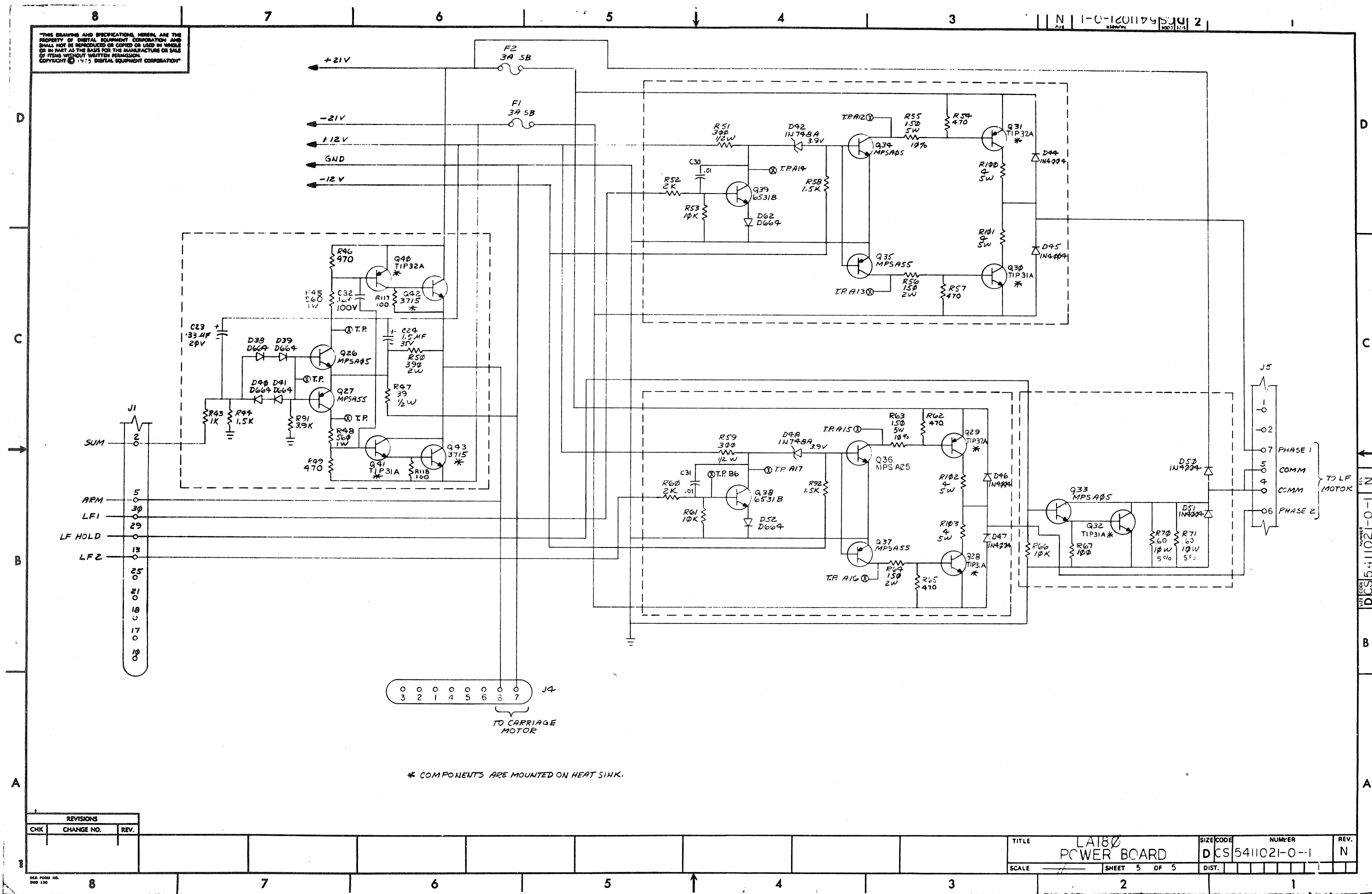
"THIS DRAWING AND SPECIFICATIONS HEREIN ARE THE PROPERTY OF DIGITAL EQUIPMENT CORPORATION AND SHALL NOT BE REPRODUCED OR COPIED OR USED IN WHOLE OR IN PART AS THE BASIS FOR THE MANUFACTURE OR SALE OF ITEMS WITHOUT WRITTEN PERMISSION. COPYRIGHT © 1975 DIGITAL EQUIPMENT CORPORATION"



REVISIONS		
CHK	CHANGE NO.	REV.

TITLE		SIZE CODE	NUMBER	REV.
LA180 POWER BOARD		DCS5411021-0-1		N
SCALE		SHEET 4 OF 5	DIST.	

THIS DRAWING AND SPECIFICATIONS HEREIN ARE THE PROPERTY OF DIGITAL EQUIPMENT CORPORATION AND SHALL NOT BE REPRODUCED OR COPIED OR USED IN WHOLE OR IN PART AS THE BASIS FOR THE MANUFACTURE OR SALE OF ITEMS WITHOUT WRITTEN PERMISSION. COPYRIGHT © 1975 DIGITAL EQUIPMENT CORPORATION



* COMPONENTS ARE MOUNTED ON HEAT SINK.

REVISIONS		
CHK	CHANGE NO.	REV.

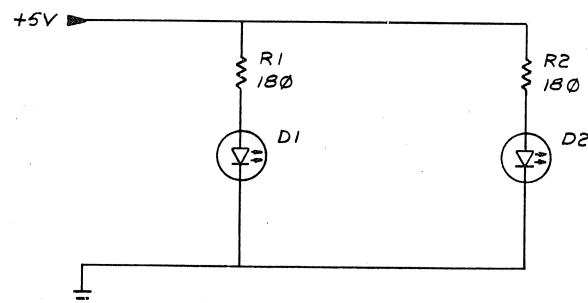
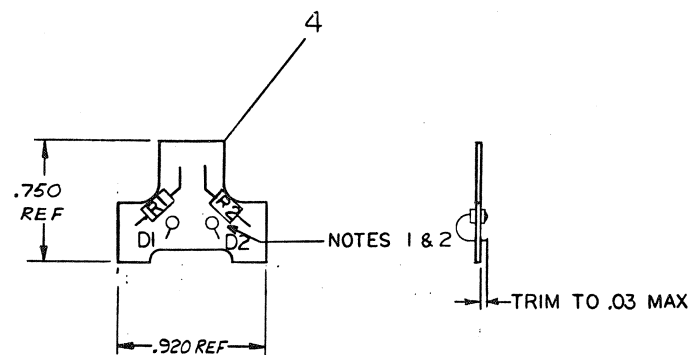
TITLE		LA180	SIZE CODE	NUMBER	REV.
POWER BOARD		DCS5411021-0-1			N
SCALE		SHEET 5 OF 5	DIST.		

This drawing and specifications, herein, are the property of Digital Equipment Corporation and shall not be reproduced or used in whole or in part as the basis for the manufacture or sale of items without written permission.

COPYRIGHT © 1974 DIGITAL EQUIPMENT CORPORATION

NOTES:

1. HEAT APPLIED TO D1 AND D2 DURING SOLDERING SHALL NOT EXCEED 285°C FOR A PERIOD OF 15 SECONDS.
2. FINISHED HOLE SIZE FOR MOUNTING D1 AND D2 SHALL BE .078 MIN. .083 MAX



REF	X-Y COORDINATE HOLE LOCATION	K-07-5410991-0-4	1	
REF	ASSY/DRILLING HOLE LAYOUT	D-AH-5410991-0-5	2	
REF	MODULE ECO HISTORY	B-MH-5410991-0-6	3	
1	ETCHED CIRCUIT BOARD	DIA-5010790-0-0	4	
2	R1, R2	RES 180 1/4W 5%	1301322	5
2	D1, D2	LIGHT EMITTING DIODE	1111907	6

QTY	REF DESIGNATION	DESCRIPTION	PART NO.	ITEM NO.
-----	-----------------	-------------	----------	----------

ETCH BOARD REV	B
----------------	---

DRN J. BITTO DATE 5/11/74	DATE 5/11/74	 EQUIPMENT CORPORATION MAYNARD, MASSACHUSETTS	TITLE LA36 ENCODER PC BOARD LED	
CHKD J. BITTO DATE 5/11/74	DATE 5/11/74			
ENG J. BITTO DATE 5/11/74	DATE 5/11/74			
PROG J. BITTO DATE 5/11/74	DATE 5/11/74			
NEXT HIGHER ASSY		SIZE CODE DICS	NUMBER 5410991-0-1	REV. C

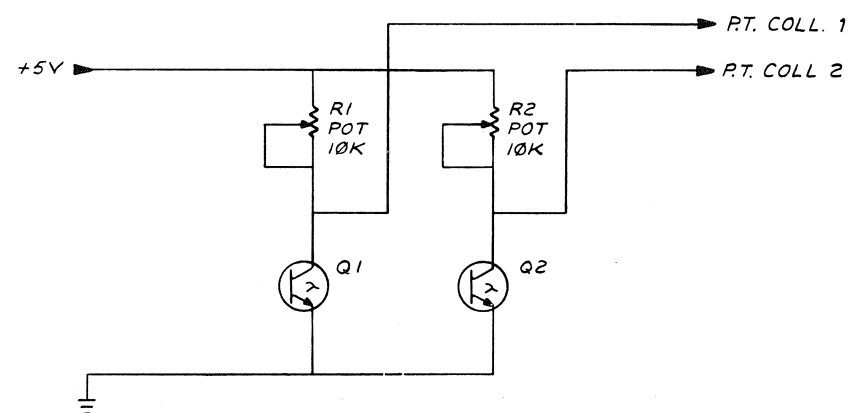
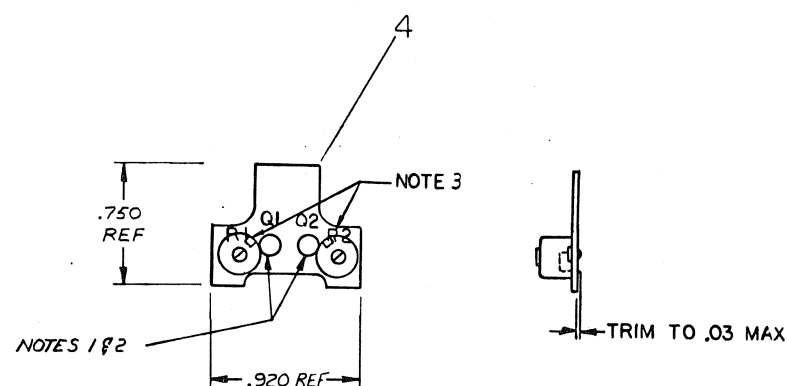
DEC NO.	EIA NO.	DEC NO.	EIA NO.
---------	---------	---------	---------

SEMICONDUCTOR CONVERSION CHART	SHEET	1	OF	1
--------------------------------	-------	---	----	---

This drawing and specifications, herein, are the property of Digital Equipment Corporation and shall not be reproduced or copied or used in whole or in part as the basis for the manufacture or sale of items without written permission.
COPYRIGHT © 1974 DIGITAL EQUIPMENT CORPORATION

NOTES:

1. HEAT APPLIED TO Q1 AND Q2 DURING SOLDERING SHALL NOT EXCEED 285° C FOR A PERIOD OF 15 SECONDS.
2. FINISHED HOLE SIZE FOR MOUNTING Q1 AND Q2 SHALL BE .078 MIN., .083 MAX.
3. R1 AND R2 MUST BE ORIENTED AS SHOWN, WITH NOTCH TOWARD CENTER OF BOARD.



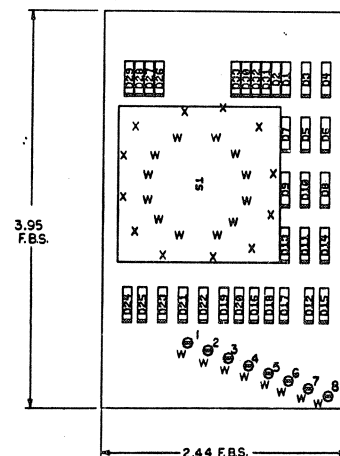
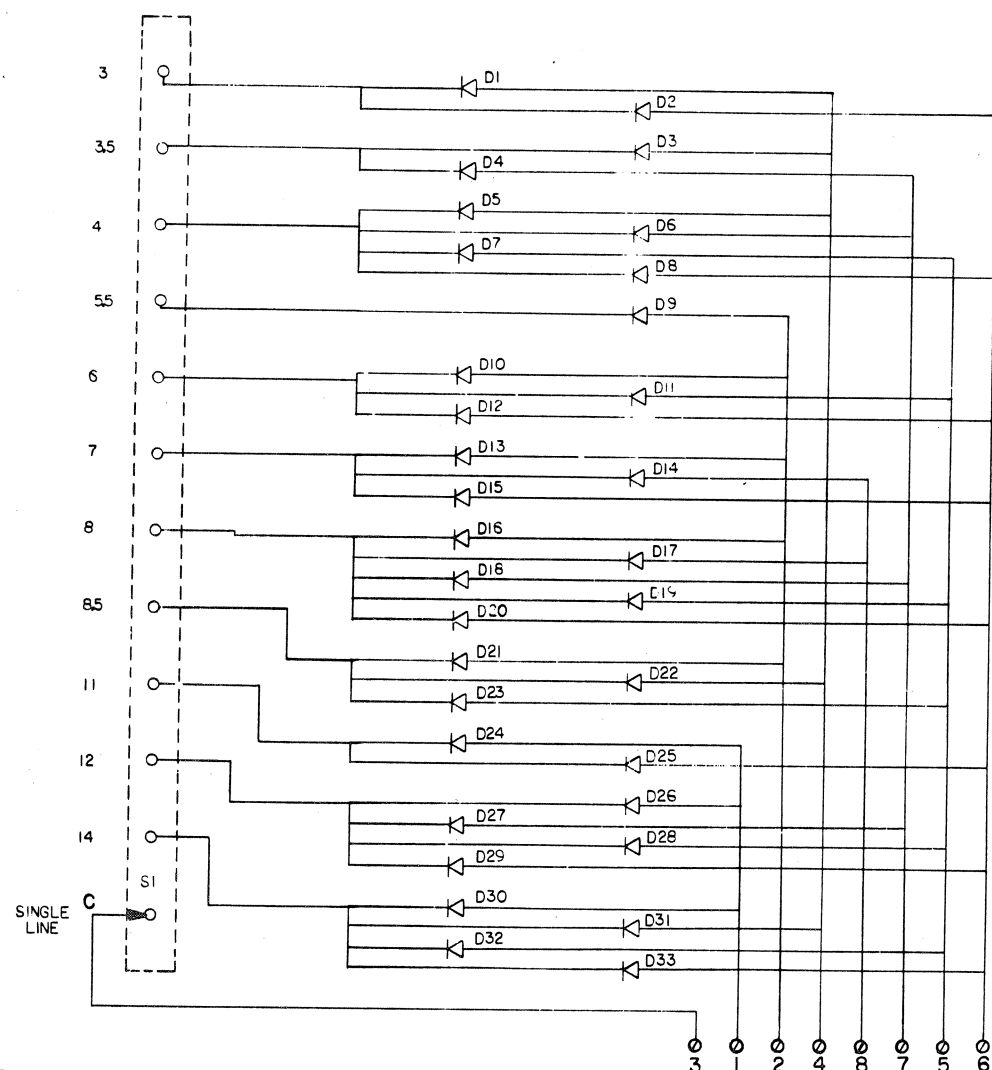
REF		X-Y COORDINATE HOLE LOCATION	K-CO-5411049-04	1
REF		ASSY/DRILLING HOLE LAYOUT	D-AH-5411049-05	2
REF		MODULE ECO HISTORY	B-MH-5411049-06	3
REF		ETCHED CIRCUIT BOARD	D-IA-5010790-00	4
2	R1, R2	POTENTIOMETER 10K	1309150-12	5
2	Q1, Q2	PHOTOTRANSISTOR	1511906	6

QTY	REF DESIGNATION	DESCRIPTION	PART NO.	ITEM NO.
PARTS LIST				
ETCH BOARD REV B				
DRN	DATE	EQUIPMENT CORPORATION		
CHK'D	DATE	MAYNARD, MASSACHUSETTS		
ENG	DATE	TITLE		
PRD	DATE	LA36		
PROD	DATE	ENCODER PC BOARD		
NEXT HIGHER ASSY		PHOTOTRANSISTOR		
DEC NO.	EIA NO.	DEC NO.	EIA NO.	REV.
SEMICONDUCTOR CONVERSION CHART				C
SCALE	SHEET	OF	DIST.	

"THIS DRAWING AND SPECIFICATIONS, HEREIN, ARE THE PROPERTY OF DIGITAL EQUIPMENT CORPORATION AND SHALL NOT BE REPRODUCED OR COPIED OR USED IN WHOLE OR IN PART AS THE BASIS FOR THE MANUFACTURE OR SALE OF ITEMS WITHOUT WRITTEN PERMISSION.
COPYRIGHT © 1975 DIGITAL EQUIPMENT CORPORATION"


NOTES:

FORM SWITCH

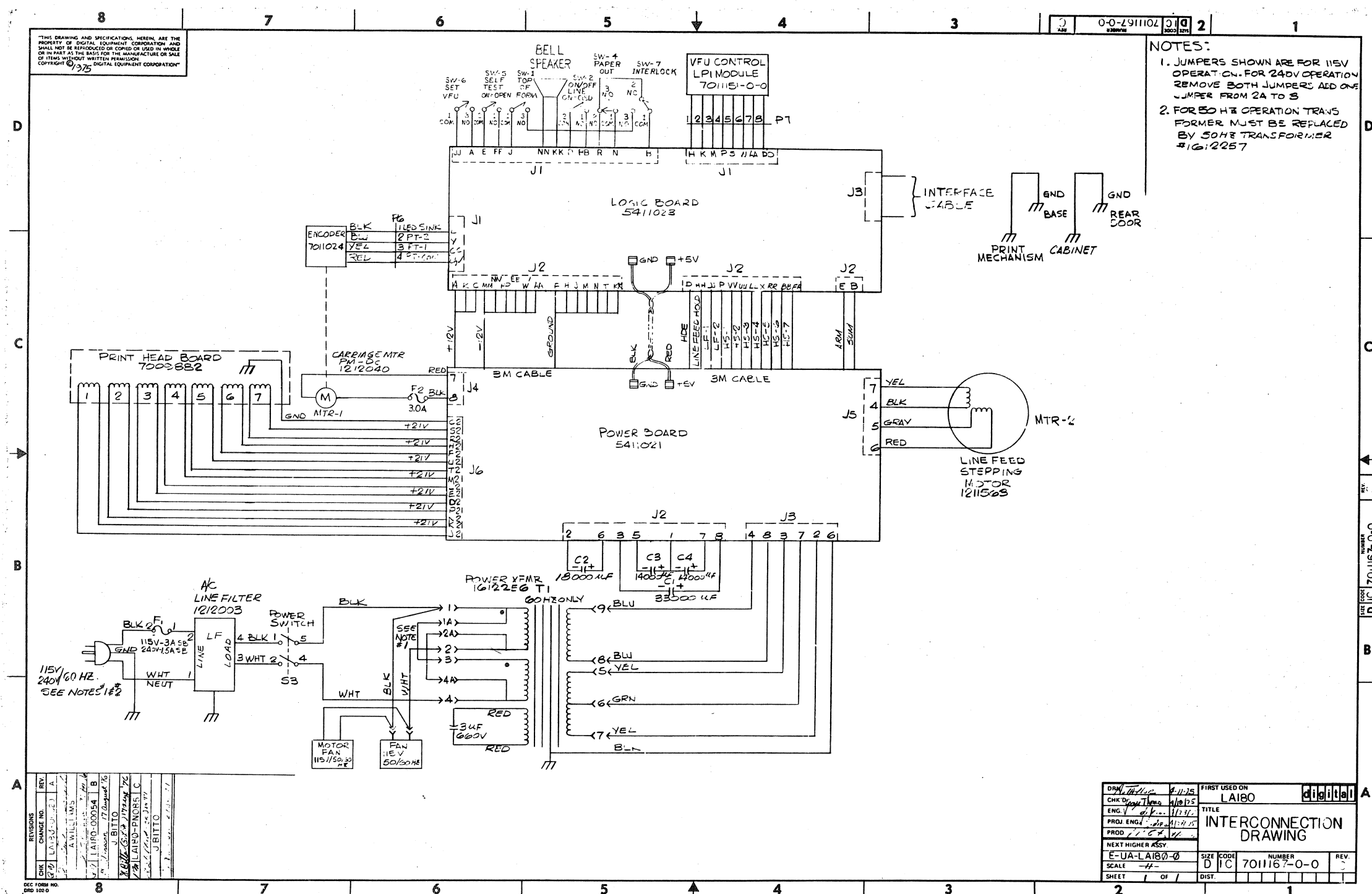


8		SPLIT LUG	9006735-00	7
33	D1-D33	DIODE D664	1100114-00	6
1	S1	SWITCH, SINGLE POLE-12 POSITION	1212443-00	5
1		ETCHED CIRCUIT BOARD	C-MD-5011652-00	4
REF		MODULE ECO HISTORY	B-MH-5411653-0-6	3
REF		ASSY/DRILLING HOLE LAYOUT	D-AH-5411653-0-5	2
REF		X-Y COORDINATE HOLE LOCATION	K-CO-5411653-0-4	1
QTY	REF. DESIGNATION	DESCRIPTION	PART NO.	ITEM NO.

FIRST USED ON OPTION MODEL
LA180

PARTS LIST									
ETCH BOARD REV.		A							
						<div></div> <div>TITLE</div> <div>6 LPI FORM CONTROL</div>			

IC TYPE	GND	+5V
GND AND 5V ARE USUALLY PIN 7 AND 14 RESPECTIVELY EXCEPTIONS ARE STATED ABOVE		
IC PIN LOCATIONS		



DIGITAL EQUIPMENT CORPORATION
MAYNARD MASSACHUSETTS

PACKAGING INSTRUCTION

DECwriter

REV: A B DATE: 7/75 1/76

ENG: Kim Menner 9/4/76 APPD: W. J. Lawrence 1/14/77 SIZE A CODE SP NUMBER 3700131-0-0 REV B

MATERIAL REQUIREMENTS

Quantity	Purchase Specification No.	Description
1	9905601	Stitched Tube
1	9905601-01	Full Telescope Cap
1	9905639	Pad with Foam (LA36/LA35 only)
1	9905129-39	Poly Bag
1	9905651	Wood Skid
1	9905651-01	Wood Brace (2 X 3)
1	9905651-01	Tee Nut
2	9909288	3/8-16 X 3 Hex-Head Bolt
2	9909290-03	Caution Tape
1	36-12-20-0-0	Stain Resistant Tape (SM)
1	9909634	Printout Cable Tie
1	9907032	Polypropylene Strapping
20 ft	9905734-02	Poly Bag
1	9905129-35	Poly Bag

PACKAGING INSTRUCTIONS

Procedure

Step

1. Lift the cover and slide the print head to the left as far as it will go. Slip the Printout Cable Tie (9907032) around the ribbon rollers (A and B). Do not over-tighten. Fasten Caution Tag (36-12-20-0-0) to tractor drive shaft. Close cover.

2. Place Pad with Foam (9905639) (foam side down) on top of the LA36/LA35 keyboard. Tape with two (2) strips of glass filament tape (9909634). Tape back door closed, using two (2) strips of tape.

3. Place DECwriter on top of Skid Deck (9905651).

4. Place all hardware and software into Poly Bag (9905129-35) and staple to deck of skid.

5. Place one strip of CW21 (Custom Wrap) or Microfoam, over each leg of the DECwriter.

6. Place Wood Brace (9905651-01) on top of legs *as it will go to properly align the bolt holes.*

7. Place Hex-Head Bolts (9909290-03) through the bolt holes in the wood brace; place the Tee-Nuts (9909288) up and underneath the skid deck; then tighten down.

8. Place a Poly Bag (9905129-39) over the DECwriter. Then, place the Stitched Tube (9905601) over and around the unit. Assemble Full Telescope Cap (9905601-01) and place on top of Stitched Tube.

9. Strap in two places as shown in Figure 2. Use Polypropylene strapping (9905734-02).

NOTE

Make sure that the Stitched Tube is resting on the wood skid base, on all 4 sides.

ENG: Kim Menner 12/29/75 APPD: W. J. Lawrence 1/14/77 SIZE A CODE SP NUMBER 3700131-0-0 REV B

DEC 8-1551-1031-1-8671 DRA - 129 SHEET 1 OF 3

PACKAGING INSTRUCTION

DECwriter

REV: DATE:

ENG: APPD: 1/77 SIZE A CODE SP NUMBER 3700131-0-0 REV B

NOTE:

Make changes to "C" size original only and rephotograph.

ENG: APPD: 1/77 SIZE A CODE SP NUMBER 3700131-0-0 REV B

DEC-108 SHEET 2 OF 3

PACKAGING INSTRUCTION

DECwriter

REV: DATE:

ENG: Kim Menner 9/4/76 APPD: W. J. Lawrence 1/14/77 SIZE A CODE SP NUMBER 3700131-0-0 REV B

NOTE:

Make changes to "C" size original only and rephotograph.

ENG: Kim Menner 9/4/76 APPD: W. J. Lawrence 1/14/77 SIZE A CODE SP NUMBER 3700131-0-0 REV B

DEC-108 SHEET 3 OF 3

THIS IS PRINT SET

--	--	--	--

SEQUENCE

B-DD-LAXX-KJ
E-UA-LAXX-KJ-Ø
A-SP-LAXX-KJ-2

[illegible]

REVISIONS			USED ON OPTION/MODEL		DRN.	DATE	TITLE				
DATE	CHG. NO.	REV			D. GILLEY	10/8/75	COMPRESSED FONT				
			LABOR		CHK'D.	DATE					
					PROJ. ENG.	DATE					
					PROD.	DATE	SIZE	CODE	NUMBER		REV
					FIELD SERV.	DATE	B	DD	LAXX-KJ		
			SHEET 1 OF 2				DIST				

