

digital

LA180

Engineering Drawings

Digital Equipment Corporation

The material herein is for information purposes only and is subject to change without notice. Digital Equipment Corporation assumes no responsibility for any errors which may appear herein.

These drawings and specifications herein are the property of Digital Equipment Corporation and shall not be reproduced or copied or used in whole or in part as the basis for the manufacture or sale of items without written permission.
Copyright © 1975, Digital Equipment Corporation

THIS IS PRINT SET

--	--	--	--

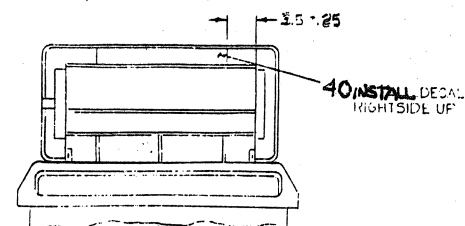
B-DD-LA180 (SHEET1)
E-UA-LA180-0-0
A-PL-LA180-0-0
D-CS-5411023-0-1
D-CS-5411021-0-1
D-CS-5410991-0-1
D-CS-5411049-0-1
D-CS-5411653-0-1
D-IC-7011167-0-0
A-SP-3700131-0-0

B-DD-LAXX-KB
B-DD-LAXX-LD
B-DD-LAXX-KJ

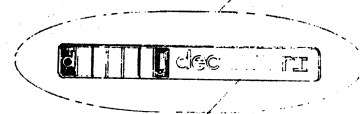
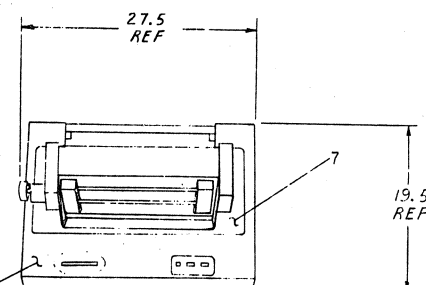
[illegible]

REV. NO.		REV		<div>USED ON OPTION/MODEL</div> <div><div>DRN.</div><div>A. TAYLOR</div><div>11/2/74</div></div> <div><div>CHK'D.</div><div></div><div></div></div> <div><div>A. TAYLOR</div><div>6/18/75</div></div> <div><div>PROJ. ENG.</div><div></div><div></div></div> <div><div>B. STELTZER</div><div>6/17/75</div></div> <div><div>PROD.</div><div></div><div></div></div> <div><div>R. JODOIN</div><div>6/18/75</div></div> <div><div>FIELD SERV.</div><div></div><div></div></div> <div><div>T. MONGELLO</div><div>6/23/75</div></div>										TITLE		DECRYPTER DRAWING									
CHG. NO.		REV												SIZE		CODE		NUMBER						REV	
2-76		B												B		DD		LA180-0						E	
6-76		C																							
8-76		D																							
12-76		E																							

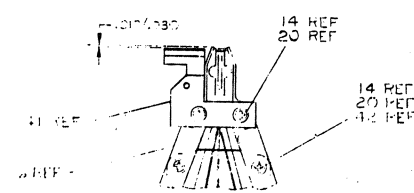
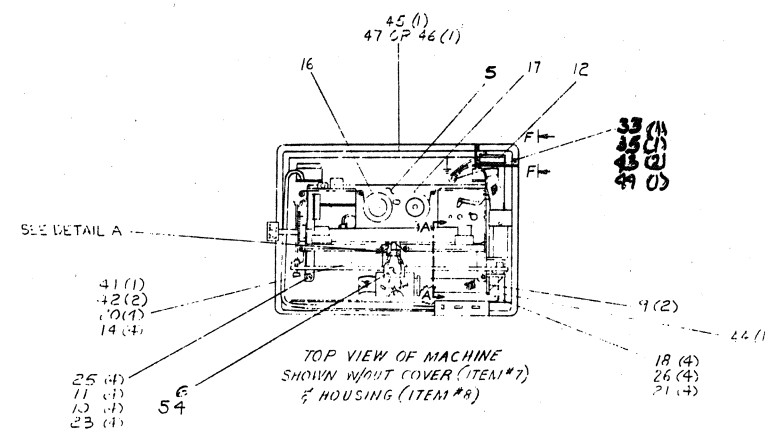
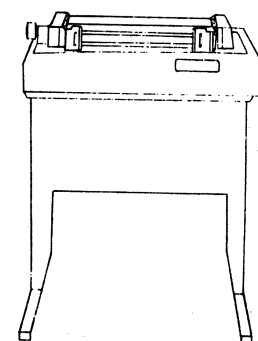
THIS DRAWING AND SPECIFICATIONS HEREIN ARE THE PROPERTY OF DIGITAL EQUIPMENT CORPORATION AND SHALL NOT BE REPRODUCED OR COPIED IN WHOLE OR IN PART AS THE BASIS FOR REPRODUCTION OR SALE OF ITEMS WITHOUT WRITTEN PERMISSION.
COPYRIGHT © 1972, DIGITAL EQUIPMENT CORPORATION



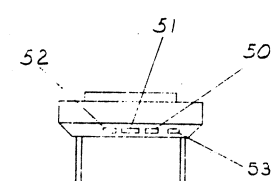
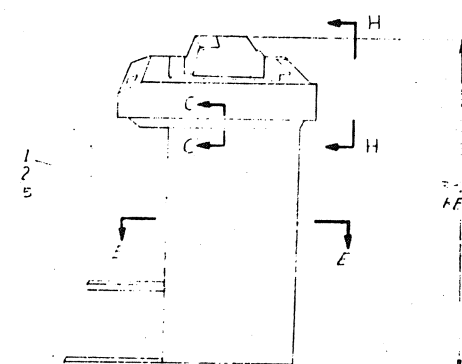
FRONT VIEW
COVER RAISED



28



DETAIL A
PRINT HEAD AND LINE INDICATOR
SCALE FULL



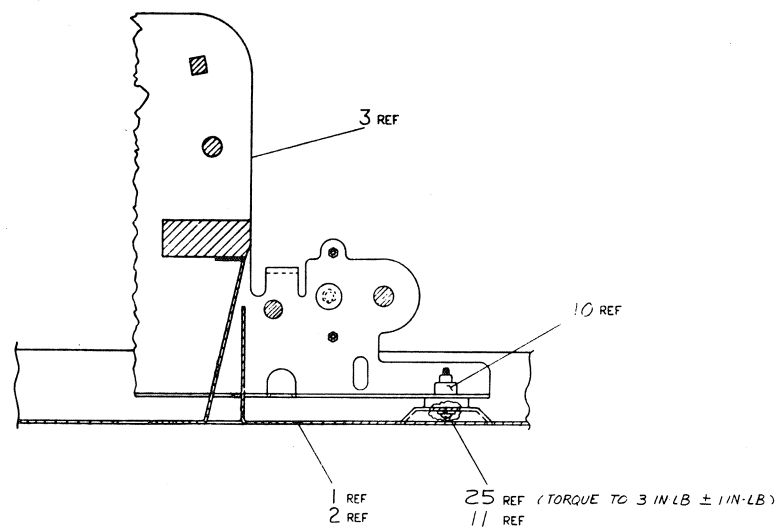
VIEW H-H
SCALE NONE
SEE NOTE 3

- NOTES:
1. FOR PARTS LIST SEE DRAWING "LA 180-00"
 2. ITEMS # 32 (PLATE W/OUT CLAMP), #33 (2 SCREWS), #34 (2 LOCKWASHERS), #35 (2 PLAT WASHERS) AND #36 (STRAIN RELIEF) ARE TO BE SHIPPED LOOSE WITH UNIT.
 3. UL AND CSA LABELS TO BE APPLIED ONLY WHEN UNIT HAS MET ALL UL AND CSA REQUIREMENTS.

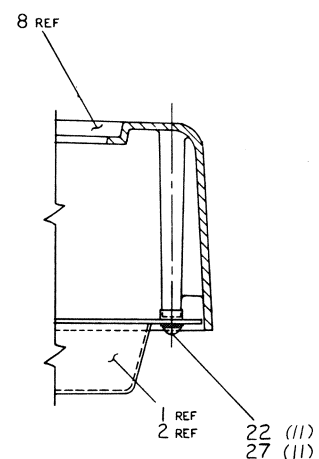
REV.	DESCRIPTION	DATE	BY	CHKD.
1	LA 180-00	8-22-72	J. W. WILKINS	J. W. WILKINS
2	LA 180-00	8-22-72	J. W. WILKINS	J. W. WILKINS
3	LA 180-00	8-22-72	J. W. WILKINS	J. W. WILKINS
4	LA 180-00	8-22-72	J. W. WILKINS	J. W. WILKINS
5	LA 180-00	8-22-72	J. W. WILKINS	J. W. WILKINS
6	LA 180-00	8-22-72	J. W. WILKINS	J. W. WILKINS
7	LA 180-00	8-22-72	J. W. WILKINS	J. W. WILKINS
8	LA 180-00	8-22-72	J. W. WILKINS	J. W. WILKINS
9	LA 180-00	8-22-72	J. W. WILKINS	J. W. WILKINS
10	LA 180-00	8-22-72	J. W. WILKINS	J. W. WILKINS
11	LA 180-00	8-22-72	J. W. WILKINS	J. W. WILKINS
12	LA 180-00	8-22-72	J. W. WILKINS	J. W. WILKINS
13	LA 180-00	8-22-72	J. W. WILKINS	J. W. WILKINS
14	LA 180-00	8-22-72	J. W. WILKINS	J. W. WILKINS
15	LA 180-00	8-22-72	J. W. WILKINS	J. W. WILKINS
16	LA 180-00	8-22-72	J. W. WILKINS	J. W. WILKINS
17	LA 180-00	8-22-72	J. W. WILKINS	J. W. WILKINS
18	LA 180-00	8-22-72	J. W. WILKINS	J. W. WILKINS
19	LA 180-00	8-22-72	J. W. WILKINS	J. W. WILKINS
20	LA 180-00	8-22-72	J. W. WILKINS	J. W. WILKINS
21	LA 180-00	8-22-72	J. W. WILKINS	J. W. WILKINS
22	LA 180-00	8-22-72	J. W. WILKINS	J. W. WILKINS
23	LA 180-00	8-22-72	J. W. WILKINS	J. W. WILKINS
24	LA 180-00	8-22-72	J. W. WILKINS	J. W. WILKINS
25	LA 180-00	8-22-72	J. W. WILKINS	J. W. WILKINS
26	LA 180-00	8-22-72	J. W. WILKINS	J. W. WILKINS
27	LA 180-00	8-22-72	J. W. WILKINS	J. W. WILKINS
28	LA 180-00	8-22-72	J. W. WILKINS	J. W. WILKINS
29	LA 180-00	8-22-72	J. W. WILKINS	J. W. WILKINS
30	LA 180-00	8-22-72	J. W. WILKINS	J. W. WILKINS
31	LA 180-00	8-22-72	J. W. WILKINS	J. W. WILKINS
32	LA 180-00	8-22-72	J. W. WILKINS	J. W. WILKINS
33	LA 180-00	8-22-72	J. W. WILKINS	J. W. WILKINS
34	LA 180-00	8-22-72	J. W. WILKINS	J. W. WILKINS
35	LA 180-00	8-22-72	J. W. WILKINS	J. W. WILKINS
36	LA 180-00	8-22-72	J. W. WILKINS	J. W. WILKINS
37	LA 180-00	8-22-72	J. W. WILKINS	J. W. WILKINS
38	LA 180-00	8-22-72	J. W. WILKINS	J. W. WILKINS
39	LA 180-00	8-22-72	J. W. WILKINS	J. W. WILKINS
40	LA 180-00	8-22-72	J. W. WILKINS	J. W. WILKINS
41	LA 180-00	8-22-72	J. W. WILKINS	J. W. WILKINS
42	LA 180-00	8-22-72	J. W. WILKINS	J. W. WILKINS
43	LA 180-00	8-22-72	J. W. WILKINS	J. W. WILKINS
44	LA 180-00	8-22-72	J. W. WILKINS	J. W. WILKINS
45	LA 180-00	8-22-72	J. W. WILKINS	J. W. WILKINS
46	LA 180-00	8-22-72	J. W. WILKINS	J. W. WILKINS
47	LA 180-00	8-22-72	J. W. WILKINS	J. W. WILKINS
48	LA 180-00	8-22-72	J. W. WILKINS	J. W. WILKINS
49	LA 180-00	8-22-72	J. W. WILKINS	J. W. WILKINS
50	LA 180-00	8-22-72	J. W. WILKINS	J. W. WILKINS
51	LA 180-00	8-22-72	J. W. WILKINS	J. W. WILKINS
52	LA 180-00	8-22-72	J. W. WILKINS	J. W. WILKINS
53	LA 180-00	8-22-72	J. W. WILKINS	J. W. WILKINS
54	LA 180-00	8-22-72	J. W. WILKINS	J. W. WILKINS
55	LA 180-00	8-22-72	J. W. WILKINS	J. W. WILKINS
56	LA 180-00	8-22-72	J. W. WILKINS	J. W. WILKINS
57	LA 180-00	8-22-72	J. W. WILKINS	J. W. WILKINS
58	LA 180-00	8-22-72	J. W. WILKINS	J. W. WILKINS
59	LA 180-00	8-22-72	J. W. WILKINS	J. W. WILKINS
60	LA 180-00	8-22-72	J. W. WILKINS	J. W. WILKINS
61	LA 180-00	8-22-72	J. W. WILKINS	J. W. WILKINS
62	LA 180-00	8-22-72	J. W. WILKINS	J. W. WILKINS
63	LA 180-00	8-22-72	J. W. WILKINS	J. W. WILKINS
64	LA 180-00	8-22-72	J. W. WILKINS	J. W. WILKINS
65	LA 180-00	8-22-72	J. W. WILKINS	J. W. WILKINS
66	LA 180-00	8-22-72	J. W. WILKINS	J. W. WILKINS
67	LA 180-00	8-22-72	J. W. WILKINS	J. W. WILKINS
68	LA 180-00	8-22-72	J. W. WILKINS	J. W. WILKINS
69	LA 180-00	8-22-72	J. W. WILKINS	J. W. WILKINS
70	LA 180-00	8-22-72	J. W. WILKINS	J. W. WILKINS
71	LA 180-00	8-22-72	J. W. WILKINS	J. W. WILKINS
72	LA 180-00	8-22-72	J. W. WILKINS	J. W. WILKINS
73	LA 180-00	8-22-72	J. W. WILKINS	J. W. WILKINS
74	LA 180-00	8-22-72	J. W. WILKINS	J. W. WILKINS
75	LA 180-00	8-22-72	J. W. WILKINS	J. W. WILKINS
76	LA 180-00	8-22-72	J. W. WILKINS	J. W. WILKINS
77	LA 180-00	8-22-72	J. W. WILKINS	J. W. WILKINS
78	LA 180-00	8-22-72	J. W. WILKINS	J. W. WILKINS
79	LA 180-00	8-22-72	J. W. WILKINS	J. W. WILKINS
80	LA 180-00	8-22-72	J. W. WILKINS	J. W. WILKINS
81	LA 180-00	8-22-72	J. W. WILKINS	J. W. WILKINS
82	LA 180-00	8-22-72	J. W. WILKINS	J. W. WILKINS
83	LA 180-00	8-22-72	J. W. WILKINS	J. W. WILKINS
84	LA 180-00	8-22-72	J. W. WILKINS	J. W. WILKINS
85	LA 180-00	8-22-72	J. W. WILKINS	J. W. WILKINS
86	LA 180-00	8-22-72	J. W. WILKINS	J. W. WILKINS
87	LA 180-00	8-22-72	J. W. WILKINS	J. W. WILKINS
88	LA 180-00	8-22-72	J. W. WILKINS	J. W. WILKINS
89	LA 180-00	8-22-72	J. W. WILKINS	J. W. WILKINS
90	LA 180-00	8-22-72	J. W. WILKINS	J. W. WILKINS
91	LA 180-00	8-22-72	J. W. WILKINS	J. W. WILKINS
92	LA 180-00	8-22-72	J. W. WILKINS	J. W. WILKINS
93	LA 180-00	8-22-72	J. W. WILKINS	J. W. WILKINS
94	LA 180-00	8-22-72	J. W. WILKINS	J. W. WILKINS
95	LA 180-00	8-22-72	J. W. WILKINS	J. W. WILKINS
96	LA 180-00	8-22-72	J. W. WILKINS	J. W. WILKINS
97	LA 180-00	8-22-72	J. W. WILKINS	J. W. WILKINS
98	LA 180-00	8-22-72	J. W. WILKINS	J. W. WILKINS
99	LA 180-00	8-22-72	J. W. WILKINS	J. W. WILKINS
100	LA 180-00	8-22-72	J. W. WILKINS	J. W. WILKINS

FIRST USED ON OPTION/MODEL LA 180		QTY.	DESCRIPTION	PART 1.3	ITEM NO.
DIMENSIONAL TOLERANCE DIMENSIONS ARE UNLESS OTHERWISE SPECIFIED		DRN.	DATE	PARTS LIST	
THIRD ANGLE PROJECTION		PROJ. ENG.	DATE	TITLE	
SEE PARTS LIST		SCALE	None	LA 180 UNIT ASSY	
SHEET 1		SCALE	None	LA 180-00	

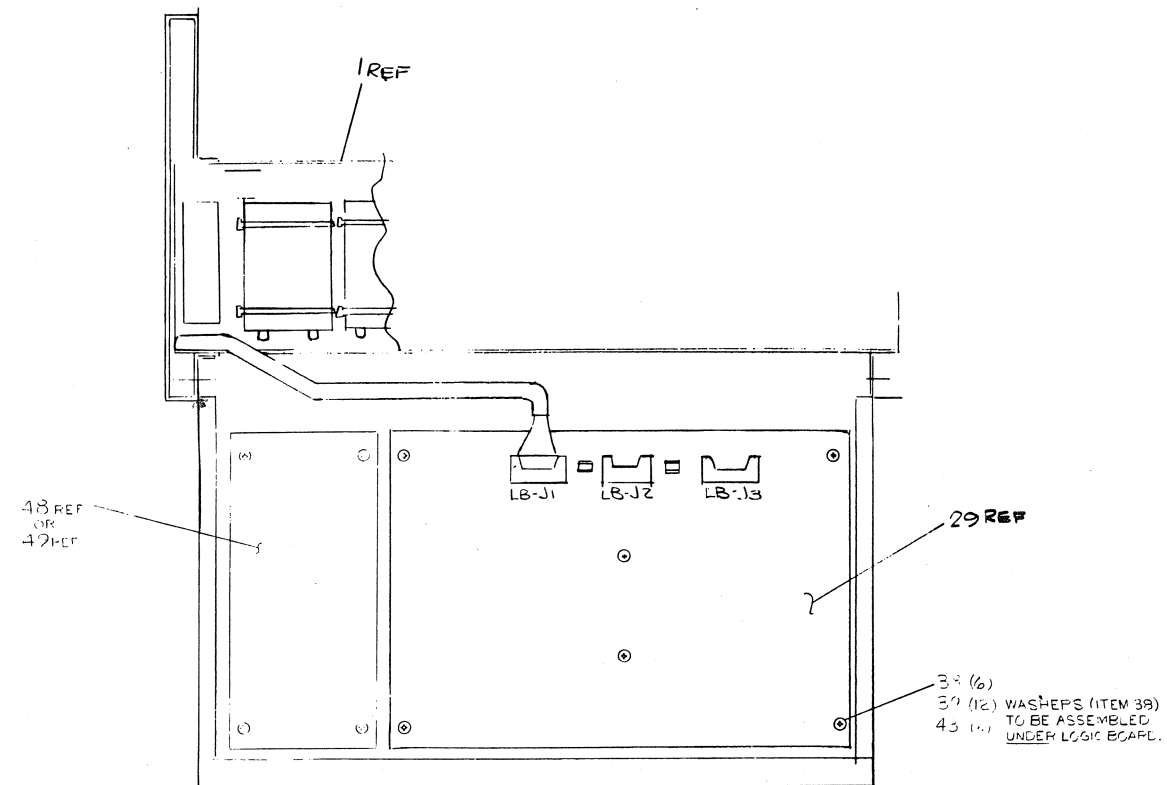
PROPERTY OF DIGITAL EQUIPMENT CORPORATION. NOT BE REPRODUCED OR COPIED OR USED IN WHOLE OR IN PART AS THE BASIS FOR THE MANUFACTURE OR SALE OF ITEMS WITHOUT WRITTEN PERMISSION. COPYRIGHT © 1974, DIGITAL EQUIPMENT CORPORATION.



SECTION A-A
SCALE: 1/1



SECTION C-C
SCALE: 1/1



VIEW F-F
SCALE: NONE

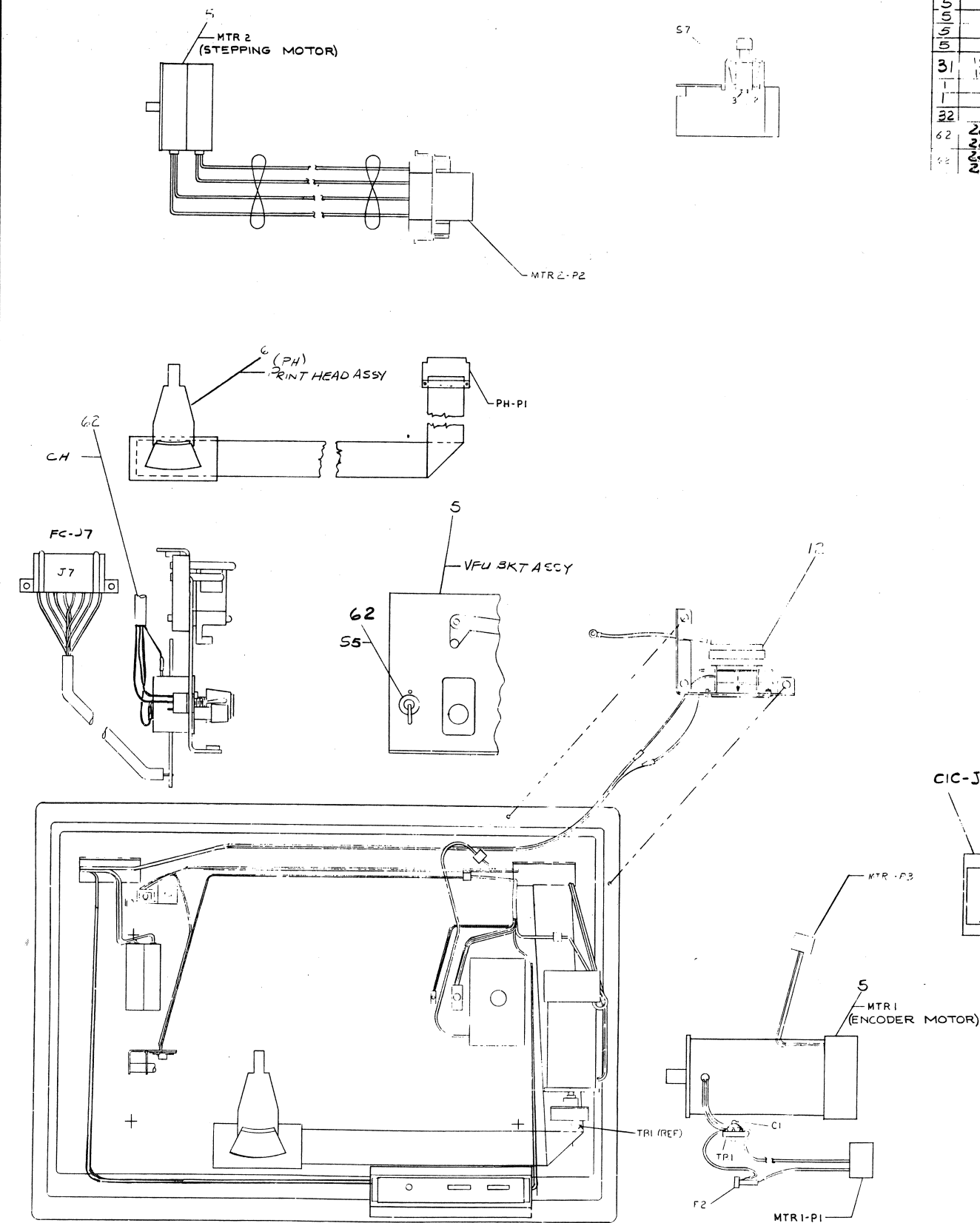
REV.	CHG. NO.	CHK.

REV.	CHG. NO.	CHK.

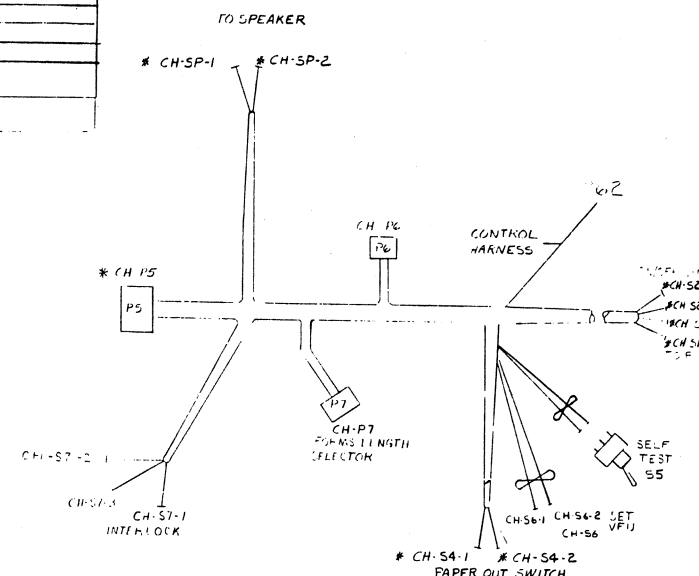
TITLE	LA180 UNIT ASSY	SIZE CODE	EUA	NUM. SER.	LA180-0-0	REV.	M
SCALE	SHEET 2 OF 3	DIST.					

THIS DRAWING AND SPECIFICATIONS, HEREIN, ARE THE PROPERTY OF SULLY EQUIPMENT CORPORATION AND SHALL NOT BE REPRODUCED OR COPIED OR USED IN WHOLE OR IN PART AS THE BASIS FOR THE MANUFACTURE OR SALE OF ITEMS WITHOUT WRITTEN PERMISSION.
COPYRIGHT © 1974 SULLY EQUIPMENT CORPORATION

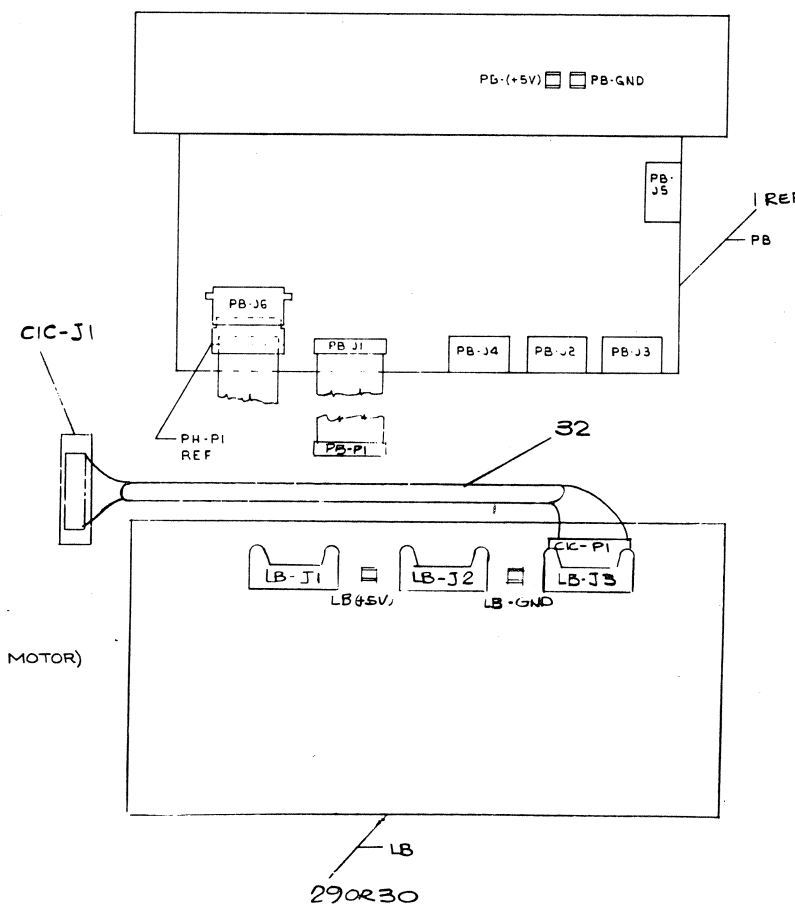
WIRE TABLE							
ITEM NO	AWG	COLOR	FROM	CONN	TERM	TO	CONN
5			MTR 2-P2			PB-J5	
62			CH-P7			FC-J7	
62			CH-SG-1			SG-1	TUF
62			CH-SG-2			SG-2	SET
5			MTR1-P3			CH-P6	
5			PH-P1			PH-J6	
5			MTR1-P1			PB-J4	
5			MECH ASSY GND			CABINET GND	
31	14	BLK	DB (+5V)		29	LB+5V	
1	14	RED	PB GND		OR	LB GND	
1			PB-P1		30	LB-J2	
32			CH-P5			LB-J1	
32			CIC-P1			LB-J3	
62	22	GRY	CH-S7-1			S7-1	INTER
62	22	BRN	CH-S7-3			S7-3	LOCK
62	22	WHT	CH-S7-2			S7-2	R.O.
62	22	WHT	CH-S7-2			S7-2	R.O.



CABLE ROUTING DIAGRAM



NOTE: (*) ASTERISKS INDICATE HARNESS CONNECTIONS MADE AT NEXT LOWER LEVEL ASSY.



REVISIONS		
CHK	CHANGE NO.	REV.

TITLE	LA180 UNIT ASSY	SIZE	1/8"	NUMBER	LA180-00	REV.	M
SCALE	1"=1'-0"	SHEET	3	OF	3	DIST.	

DIGITAL EQUIPMENT CORPORATION MAYNARD, MASSACHUSETTS PARTS LIST			QUANTITY / VARIATION													
MADE BY L. TAYLOR		CHECKED	SECTION													
DATE 10/4/74		DATE 6-17-75	1													
ENG		PROD R. L. Jordan	ISSUED SECT.													
DATE 6-17-75		DATE 6/18/75	1													
ITEM NO.	DWG NO. / PART NO.	DESCRIPTION	LA180-PA	LA180-PB	LA180-PC	LA180-PD	LA180-CA	LA180-CB	LA180-CC	LA180-CD	LA180-EA	LA180-EB	LA180-EC	LA180-ED		
1	E-AD-7010094-1-0	CABINET ASSY W/POWER SUPPLY(115V) 6ØHZ	1	-	-	-	1	-	-	-	1	-	-	-		
2	E-AD-7010094-2-0	CABINET ASSY W/POWER SUPPLY(230V) 6ØHZ	-	1	-	-	-	1	-	-	-	1	-	-		
3	E-AD-7010094-3-0	CABINET ASSY W/POWER SUPPLY(115V) 5ØHZ	-	-	1	-	-	-	1	-	-	-	1	-		
4	E-AD-7010094-4-0	CABINET ASSY W/POWER SUPPLY(230V) 5ØHZ	-	-	-	1	-	-	-	1	-	-	-	1		
5	E-AD-7010091-0-0	PRINTER MECHANISM ASSY	1	1	1	1	1	1	1	1	1	1	1	1		
6	D-AD-7009882-0-0	PRINT HEAD ASSY	1	1	1	1	1	1	1	1	1	1	1	1		
7	D-IA-7010758-0-0	COVER ASSY	1	1	1	1	1	1	1	1	1	1	1	1		
8	E-IA-7010757-0-0	HOUSING ASSY	1	1	1	1	1	1	1	1	1	1	1	1		
9	1202704-00	CLAMP, CABLE	2	2	2	2	2	2	2	2	2	2	2	2		
10	9008896-00	WELLNUT #10-32	7	7	7	7	7	7	7	7	7	7	7	7		
11	9007906-00	WASHER, SPLIT LOCK, #10	4	4	4	4	4	4	4	4	4	4	4	4		
12	C-AD-7010756-0-0	FAN ASSY 115V, MOTOR	1	1	1	1	1	1	1	1	1	1	1	1		
13	9007649-00	WASHER, EXT TOOTH LOCK, #6	1	1	1	1										
14	9006633-00	WASHER, INTERNAL TOOTH LOCK #6	4	4	4	4	4	4	4	4	4	4	4	4		
15	A-MD-7412103-0-0	PKG. OF PAPER (100 SHEETS)	1	1	1	1	1	1	1	1	1	1	1	1		
16	3612153-00	RIBBON SPOOL W/RIBBON	1	1	1	1	1	1	1	1	1	1	1	1		
17	1212008-00	RIBBON SPOOL (EMPTY)	1	1	1	1	1	1	1	1	1	1	1	1		
18	9006011-1	SCREW, PHL, PAN HD, #4-40 x .38L	4	4	4	4	4	4	4	4	4	4	4	4		
19	9006077-1	SCREW, PHL, PAN HD, #6-32 x .38L	1	1	1	1										
20	9007793-1	SCREW, PHL, PAN HD, #6-32 x .56L	4	4	4	4	4	4	4	4	4	4	4	4		
21	9006557-00	NUT, KEPS, #4-40	4	4	4	4	4	4	4	4	4	4	4	4		
22	9009630-01	SCREW, PHL, PAN HD, #6-18 x .50, SELF TH	11	11	11	11	11	11	11	11	11	11	11	11		
TITLE			ASSY NO.		SIZE		CODE		NUMBER				REV.		ECO NO.	
LA180 UNIT ASSY			E-UA-LA180-Ø-Ø		A		PL		LA180-Ø-Ø				M		LA180-Ø-Ø PNC87	
SHEET 1 OF 3			DIST.													

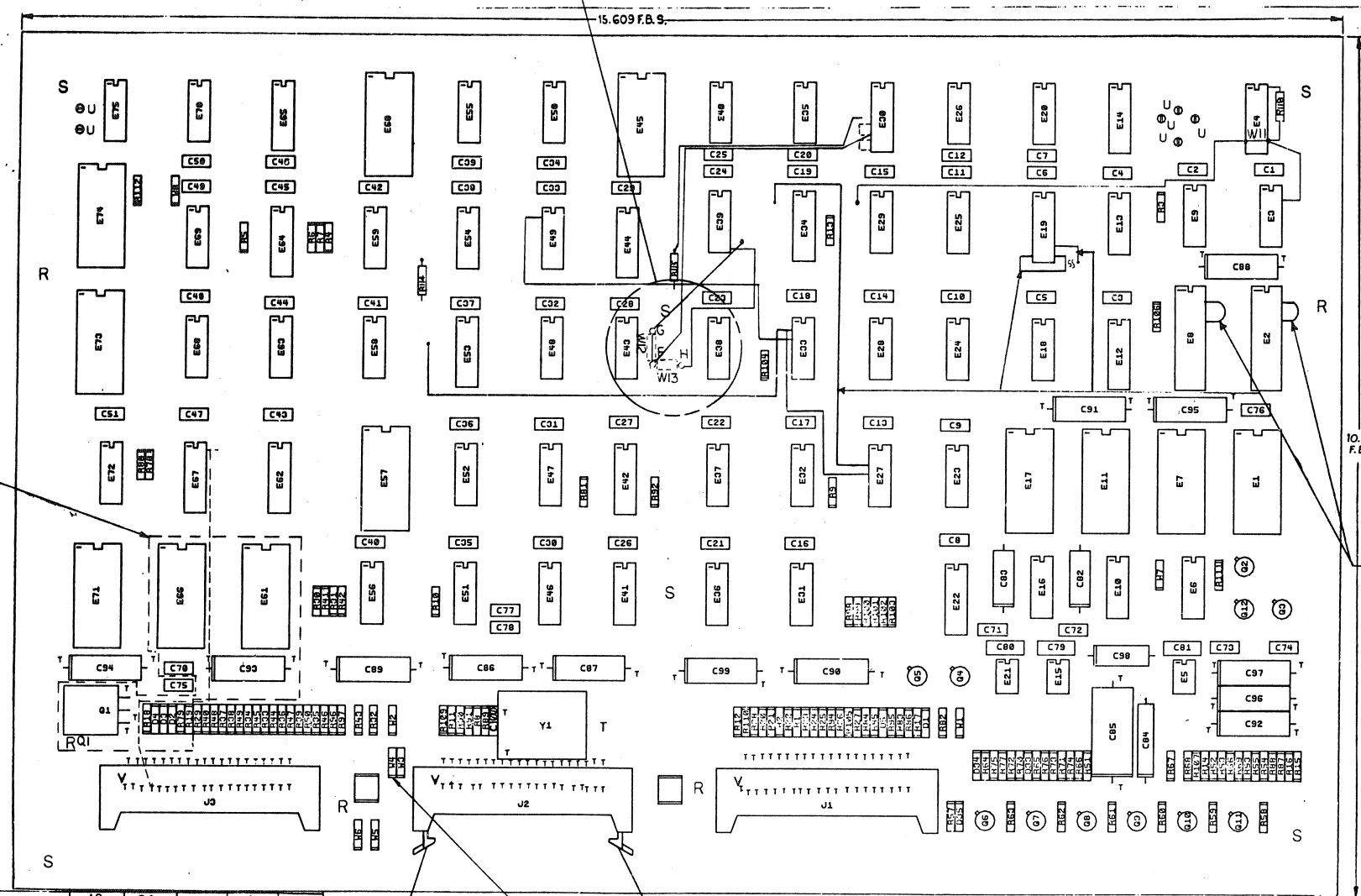
DIGITAL EQUIPMENT CORPORATION MAYNARD, MASSACHUSETTS					QUANTITY / VARIATION											
PARTS LIST					LA180-PA	LA180-PB	LA180-PC	LA180-PD	LA180-CA	LA180-CB	LA180-CC	LA180-CD	LA180-EA	LA180-EB	LA180-EC	LA180-ED
MADE BY DICK VENO		CHECKED		SECTION												
DATE 3/25/74		DATE 6-17-75		1												
ENG		PROD R. J. Jodanis		ISSUED SECT.												
DATE 6-17-75		DATE 6/18/75		1												
ITEM NO.	DWG NO. / PART NO.	DESCRIPTION			LA180-PA	LA180-PB	LA180-PC	LA180-PD	LA180-CA	LA180-CB	LA180-CC	LA180-CD	LA180-EA	LA180-EB	LA180-EC	LA180-ED
23	9006664-00	WASHER, FLAT, #10			7	7	7	7	7	7	7	7	7	7	7	7
24	9007801-00	WASHER, SPLIT LOCK, #6			1	1	1	1								
25	9008955-1	SCREW, PHL PAN HD, #10-32 x .94L			7	7	7	7	7	7	7	7	7	7	7	7
26	9006658-00	WASHER, FLAT, #4			4	4	4	4	4	4	4	4	4	4	4	4
27	9006653-00	WASHER, FLAT, #6			15	15	15	15	15	15	15	15	15	15	15	15
28	C-PS-3612451-0-0	NAME PLATE			1	1	1	1	1	1	1	1	1	1	1	1
29	D-CS-5411023-0-1	LOGIC BOARD LA180			1	1	1	1	1	1	1	1	1	1	1	1
30	D-CS-5411023-YA-1	LOGIC BOARD LA180 C/C			-	-	-	-								
31	D-IA-7011469-0-0	C/C INTERFACE CABLE ASSY			-	-	-	-								
32	C-MD-7413216-0-0	PLATE, INPUT CLAMP			1	1	1	1	1	1	1	1	1	1	1	1
33	9006037-1	SCR PHL PAN HD 8-32 x .38			3	3	3	3	3	3	3	3	3	3	3	3
34	9006690-00	WASHER SPLIT LOCK #8			2	2	2	2	2	2	2	2	2	2	2	2
35	9006660-00	WASHER FLAT #8			4	4	4	4	4	4	4	4	4	4	4	4
36	9008509-00	STRAIN RELIEF			1	1	1	1	1	1	1	1	1	1	1	1
37	A-SP-3700131-0-0	PACKAGING INSTRUCTIONS			REF	REF	REF	REF	REF	REF	REF	REF	REF	REF	REF	REF
38	9008208-1	SCR, PAN HD, NYLON 8-32 x .50			6	6	6	6	6	6	6	6	6	6	6	6
39	9006708	WASHER NYLON .37 O.D x .19 I.D x .032 THK			12	12	12	12	12	12	12	12	12	12	12	12
40	A-DC-7416178-0-0	DECAL, LA180			1	1	1	1	1	1	1	1	1	1	1	1
41	C-MD-7414953-0-0	LINE INDICATOR			1	1	1	1	1	1	1	1	1	1	1	1
42	9006656	WASHER, FLAT			2	2	2	2	2	2	2	2	2	2	2	2
43	9008072-00	EXTERNAL TOOTH LOCKWASHER #8			8	8	8	8	8	8	8	8	8	8	8	8
44	3612680-00	DECAL, GROUND SYMBOL			2	2	2	2	2	2	2	2	2	2	2	2
TITLE		ASSY NO.		SIZE	CODE		NUMBER					REV		ECO NO.		
LA180 UNIT ASSY		E-UA-LA180-0-0		A	PL		LA180-0-0					M				
SHEET 2 OF 3		DIST.														

[illegible]

THIS DRAWING AND SPECIFICATIONS HEREIN ARE THE PROPERTY OF DIGITAL EQUIPMENT CORPORATION AND SHALL NOT BE REPRODUCED OR COPIED OR USED IN WHOLE OR IN PART AS THE BASIS FOR THE MANUFACTURE OR SALE OF ITEMS WITHOUT WRITTEN PERMISSION.
COPYRIGHT © 1975 DIGITAL EQUIPMENT CORPORATION

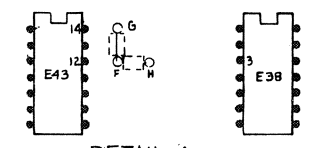
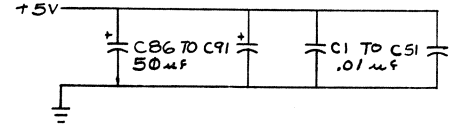
NOTES: SEE DETAIL A

- NOTE: 1. W2-W7, ARE NOT INSERTED
2. JUMPER WIRES ADDED - 8 PLACES
E2-18 TO E2-19
E8-18 TO E8-19
3. COMPONENTS WITHIN OUTLINE WERE USED ONLY WHEN PROMS WERE USED ON SERIAL #11303 AND EARLIER.
4. W4 NECESSARY FOR 591 NS OR 1200 AUDIO CLOCK TO J3.



74175	12	24			
74161	8	16			
74123	8	16			
7489	8	16			
74150	12	24			
74190	8	16			
7442	8	16			
74193	8	16			
74154	12	24			
2101-2	8	22			
8640	1	8			
7493A	10	5			
1702A		12,22,23			16,24
LM301A			7	4	
2627	12	24			
2626	12	24			
IC TYPE	GND	+5V	+12V	-12V	-9V

88 TYP 3PLACES SEE NOTE 4 89 TYP 3PLACES



DETAIL A SCALE: NONE

FIRST USED ON OPTION MODEL		LA180	
QTY	REF. DESIGNATION	DESCRIPTION	PART NO.
ETCH BOARD REV. E			
PARTS LIST			
DRN.	J. EGGER	DATE	3-18-75
CHK'D.	J. EGGER	DATE	3-18-75
ENG.	C. HANCOCK	DATE	3-18-75
PROD'G.	W. J. O'BRIEN	DATE	4-1-75
PROD.	J. J. GRIFFIN	DATE	4-1-75
NEXT HIGHER ASSY			
DEC NO.	EIA NO.	DEC NO.	EIA NO.
SEMICONDUCTOR CONVERSION CHART			
SHEET 1 OF 9			
TITLE		LA180 LOGIC BOARD	
SIZE CODE	NUMBER	REV.	AS
D CS	5411023-0-1		

GND AND 5V ARE USUALLY PIN 7 AND 14 RESPECTIVELY EXCEPTS ARE STATED ABOVE
IC PIN LOCATIONS

"THIS DRAWING AND SPECIFICATIONS, HEREIN, ARE THE PROPERTY OF DIGITAL EQUIPMENT CORPORATION, AND SHALL NOT BE REPRODUCED OR COPIED OR USED IN WHOLE OR IN PART AS THE BASIS FOR THE MANUFACTURE OR SALE OF ITEMS WITHOUT WRITTEN PERMISSION.
COPYRIGHT © 1974, DIGITAL EQUIPMENT CORPORATION"

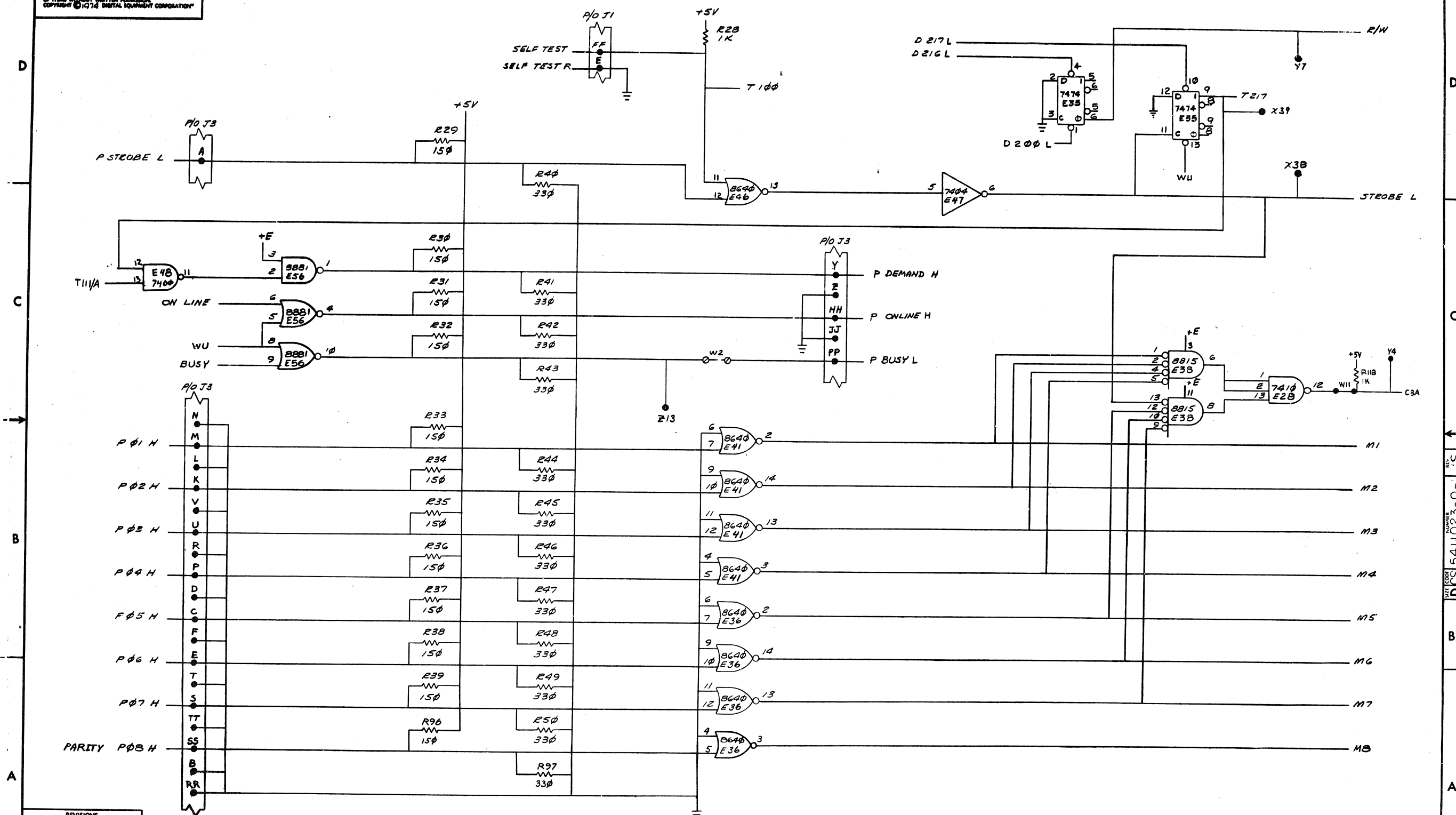
PARTS LIST				
QTY	REF DESIGNATION	DESCRIPTION	PART NO	ITEM NO
REF		X-Y COORDINATE HOLE LOCATION	K-CO-5411023-0-4	1
REF		ASSY/DRILLING HOLE LAYOUT	E-AH-5411023-0-5	2
REF		MODULE ECO HISTORY	B-MH-5411023-0-6	3
1		ETCHED CIRCUIT BOARD	5011022-00	4
4	C79, C80, C81, C100	CAP 39pF 100V 5%	1000010-00	5
1	C85	CAP .68uF 50V 10%	1010031-06	6
2	C82, C83	CAP .047uF 100V 10%	1000051-00	7
6	C92, C94-97, C99	CAP 25uF 25V 10%	1000075-00	8
57	C1-C51, C71-C76	CAP .01uF 50V	1001610-00	9
1	C84	CAP .1uF 100V 10%	1002342-00	10
2	C77, C78	CAP .005uF 100V 20%	1001765-00	11
6	C86-C91	CAP 50uF 25V 10%	1001796-00	12
2	D1, D35	DIODE D664	1100114-00	13
2	D33, D34	DIODE 1N748A 3.9V 5%	1100122-00	14
2	D3, D4	DIODE 40151 2P1	1105873-00	15
1	D5	DIODE D662	1100113-00	16
3	J1, J2, J3	CONN 40 PIN	1209941-02	17
2	E1, E7, E10	SOCKET IC 24 PIN	1210693-00	18
1	E86	RES 51u 1/4W 5%	1309422-00	19
15	R30-R39, R12, R29, R85, R96, R114	RES 150 1/4W 5%	1300250-00	20
3	R78, R90, R82	RES 100 1/4W 5%	1300229-00	21
1	R57	RES 820 1/4W 5%	1301775-00	22
3	R53, R70, R71	RES 180 1/4W 5%	1301322-00	23
1	R83	RES 560 1/4W 5%	1301890-00	24
18	R40-R50, R93, R97, R110, R115	RES 330 1/4W 5%	1300295-00	25
2	R84, R85	RES 470 1/4W 5%	1300316-00	26
25	R1-R11, R13-R17, R27, R28, R89, R94, R105, R106, R111, R112, R118	RES 1K 1/4W 5%	1300365-00	27
1	R87	RES 1.5K 1/4W 5%	1300391-00	28
5	R81, R88, R90-R92	RES 5.6K 1/4W 5%	1301874-00	29
2	R55, R56	RES 1K 1/8W 1%	1302748-00	30
1	R51	RES 47K 1/4W 5%	1302177-00	31
1	R61	RES 11.5K 1/8W 1%	1302860-00	32
2	R72, R73	RES 820K 1/4W 10%	1303187-00	33
2	R62, R63	RES 2.61K 1/4W 1%	1303303-00	34
2	R76, R77	RES 5.11K 1/4W 1%	1304854-00	35
2	R74, R75	RES 619 1/4W 1%	1305126-00	36
1	R58	RES 31.6K 1/8W 1%	1305419-0-0	38
2	R52, R54	RES 232K 1/8W 1%	1305424-00	39
6	R64-R69	RES 2K 1/4W 5%	1302388-00	40
1	R60	RES 16.9K 1/8W 1%	1312618-00	41
1	R59	RES 24.3K 1/4W 1%	1309418-00	42
2	Q2, Q3	TRANS 6534D PNP	1503409-00	43
9	Q4-Q12	TRANS MPSA05 NPN	1510705-00	44
1	Q1	TRANS DMSCB PNP	1510598-00	45
1	Y1	CRYSTAL 1.6896 MHE	1811689-00	46
11	E18, E20, E23, E25, E26, E27, E35, E50, E51, E54, E55	I.C. 7474	1905547-00	47
4	E24, E48, E49, E52	I.C. 7400	1905575-00	48
1	E28	I.C. 7410	1905576-00	49
1	E70	I.C. 7420	1905577-00	50
1	E69	I.C. 7401	1905590-00	51
2	E39, E40	I.C. 7493A	1909054-00	52

REVISIONS		
CHK	CHANGE NO.	REV

PARTS LIST				
QTY	REF DESIGNATION	DESCRIPTION	PART NO	ITEM NO
3	E36, E41, E46	I.C. 8690	1911469-00	53
6	E31, E33, E47, E72, E75, E27	I.C. 7404	1909686-00	54
3	E45, E60, E73	I.C. 74154	1909701-00	55
1	E16	I.C. 7413	1909989-00	56
5	E12, E14, E62, E64, E67	I.C. 74193	1910018-00	57
1	E53	I.C. 7442	1910046-00	58
1	E19	I.C. 74190	1910095-00	59
2	E54, E30	I.C. 8881	1909705-00	60
2	E57, E74	I.C. 74150	1910153-00	61
3	E5, E15, E21	I.C. LM301A	1910282-00	62
1	E65	I.C. 7489	1910396-00	63
1	E42	I.C. 74123	1910436-00	64
2	E34, E44	I.C. 74161	1910650-00	65
1	E22	I.C. 74175	1910651-00	66
2	E2, E8	I.C. 2101-2	2112323-00	67
2	E61, E66	I.C. 1702A PROMS	2300044-05	68
1	E38	I.C. 8815	1909713-00	69
4	E3, E9, E32, E37	I.C. 74197	1910035-00	70
4	E43, E59, E63, E68	I.C. 7408	1910155-00	71
1	E1	I.C. MK2626 (UNSLASHED 0)	23071A6-00	72
1	E7	I.C. MK 2627 (ALPHA SET)	23070A6-00	73
9		SPLIT LUGS	9006735	74
1		SCREW PPH	9006011-01	75
2		FASTON TAB	9007113-00	76
1		KEP NUT	9006557-00	77
2		EYLETS	9009000	78
9	R98-R104, R109, R107	RES 47K 1/4W 5%	1302177	79
1	E58	I.C. 7414	1911324	80
1	E13	I.C. 74180	1910724	81
1	E10	I.C. 9601	1909373	82
1	E6	I.C. 7406	1910741	83
1	C98	CAP 39uF 10V 10%	1000076	84
7	R20 THRU R26	RES 4.7K 1/4W 5%	1300447-00	85
5	W1, W4, W8, W11, W12 OR W13	INSULATED JUMPER	9009185	86
AR		JUMPER, INSULATED	9105740-55	87
3		LATCH, LEFT	1209941-03	88
3		LATCH, RIGHT	1209941-04	89
1	E71	IC MK2611 IP CROM	23088A6	90

THIS DRAWING AND SPECIFICATIONS HEREIN ARE THE PROPERTY OF DIGITAL EQUIPMENT CORPORATION AND SHALL NOT BE REPRODUCED OR COPIED OR USED IN WHOLE OR IN PART AS THE BASIS FOR THE MANUFACTURE OR SALE OF ITEMS WITHOUT WRITTEN PERMISSION. COPYRIGHT © 1974 DIGITAL EQUIPMENT CORPORATION

15-11-01 15
DCS 5411023-0-1 2

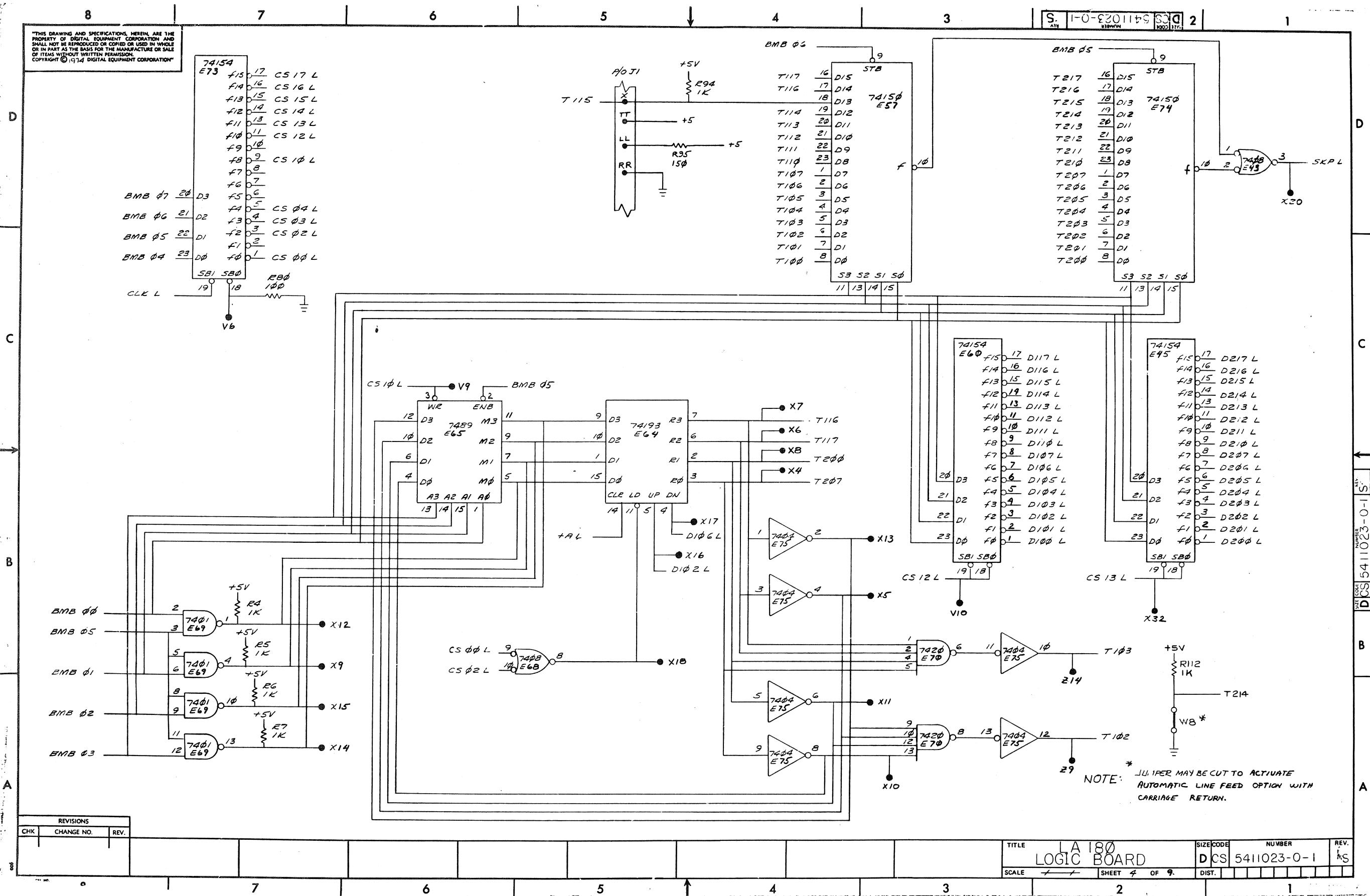


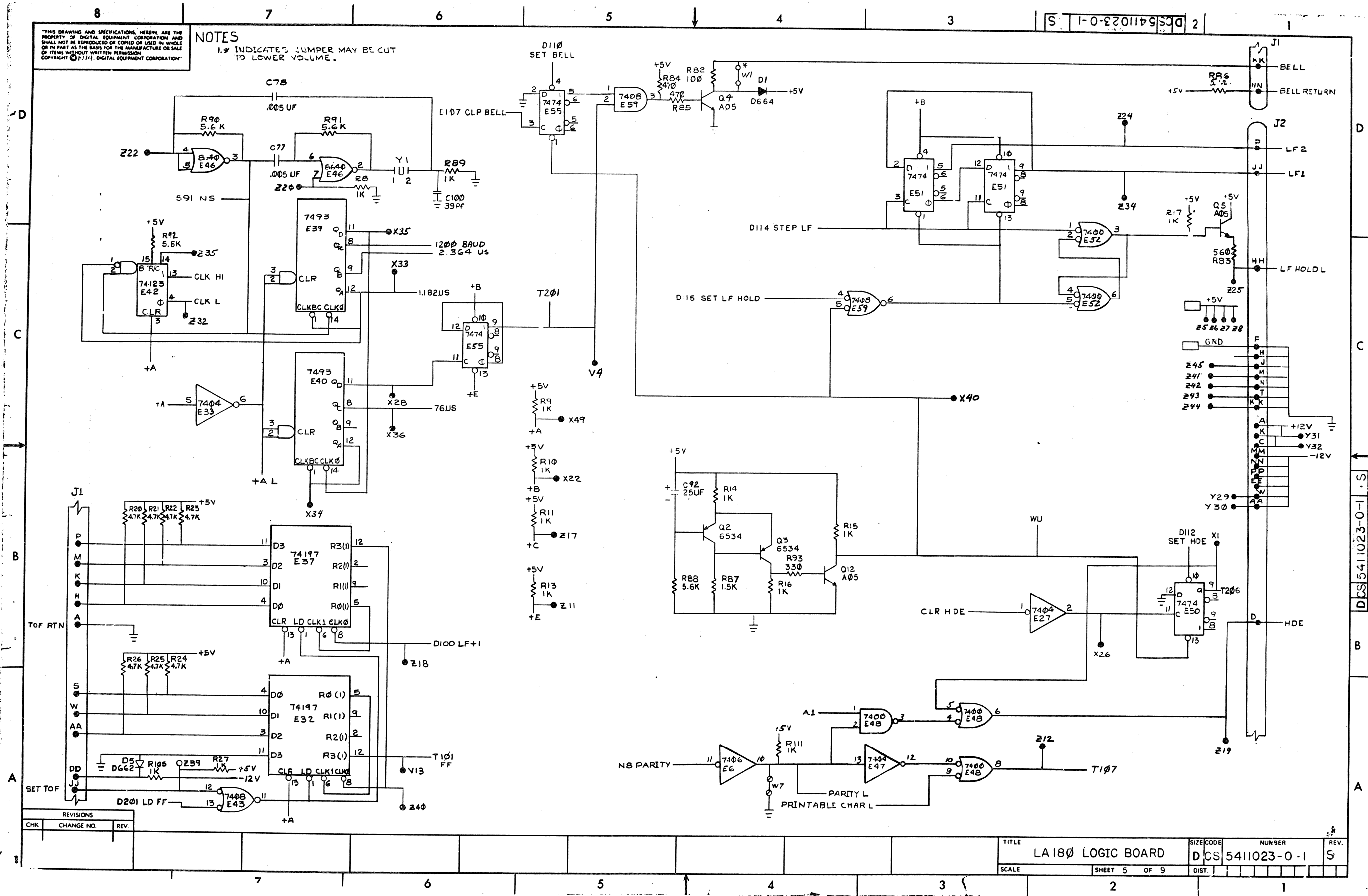
REVISIONS		
CHK	CHANGE NO.	REV.

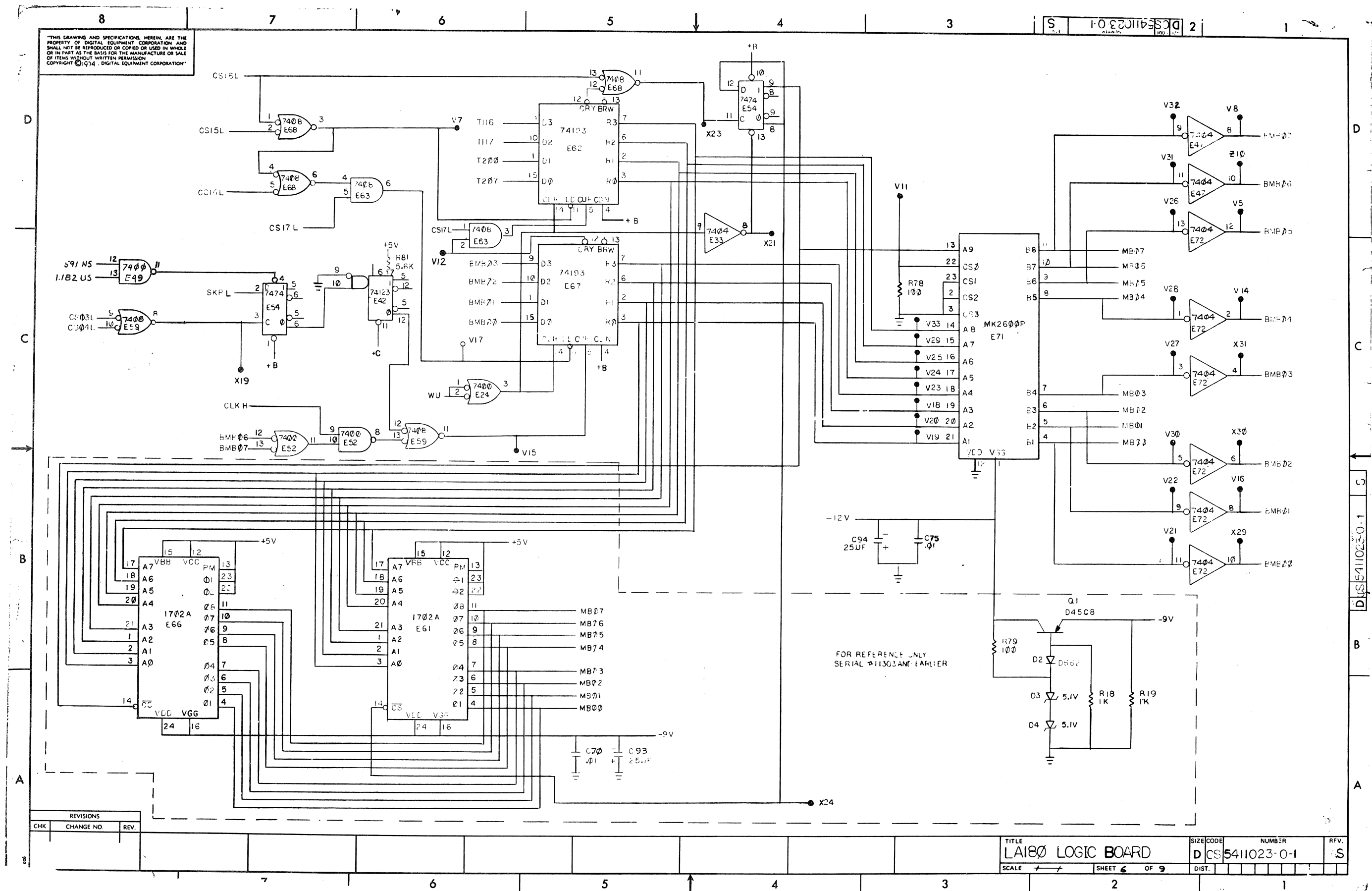
TITLE LA180
LOGIC BOARD
SCALE 1:1
SHEET 3 OF 9
SIZE CODE DCS 5411023-0-1
NUMBER 15
REV. 15

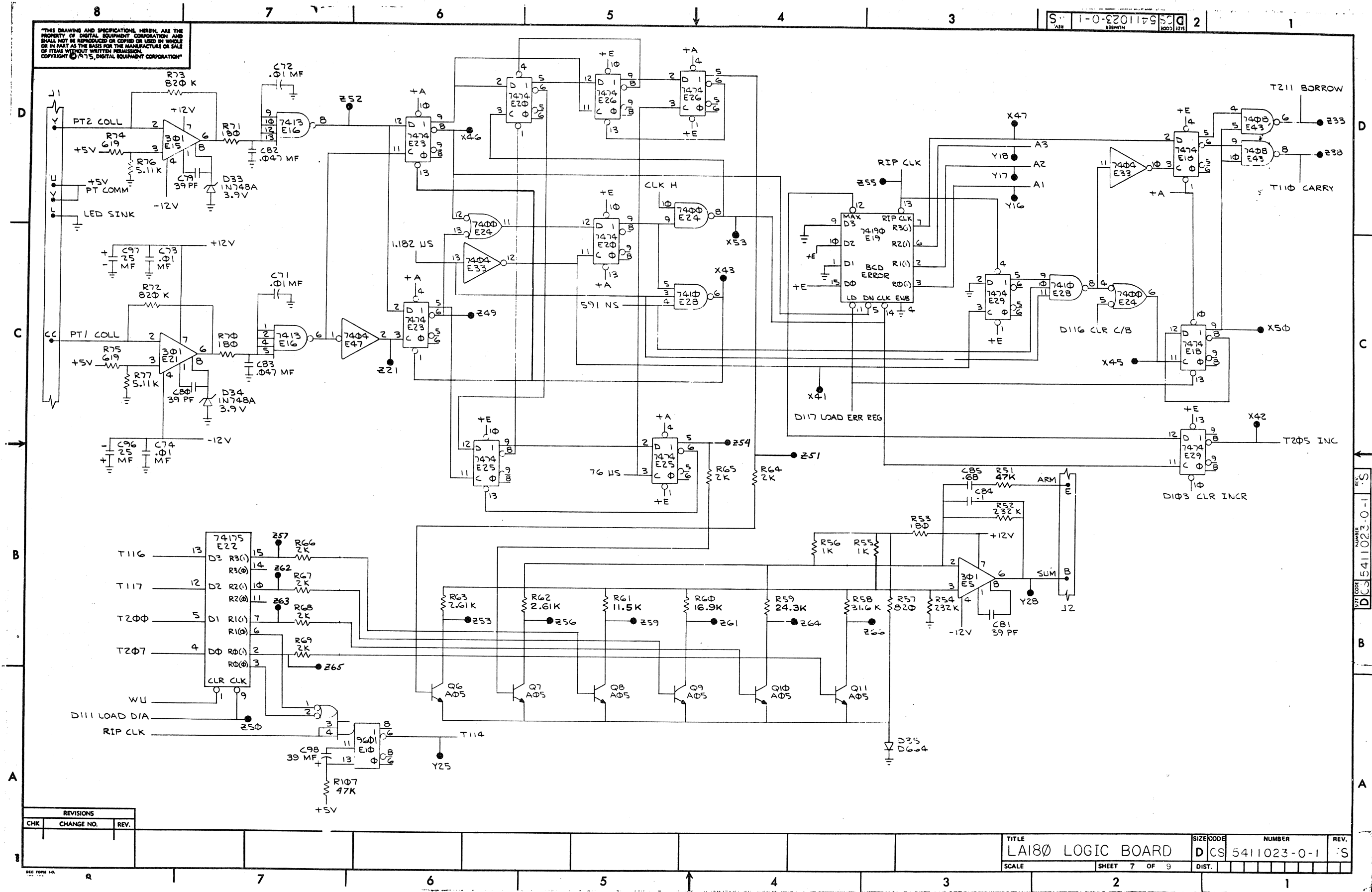
THIS DRAWING AND SPECIFICATIONS HEREIN ARE THE PROPERTY OF DIGITAL EQUIPMENT CORPORATION AND SHALL NOT BE REPRODUCED OR COPIED OR USED IN WHOLE OR IN PART AS THE BASIS FOR THE MANUFACTURE OR SALE OF ITEMS WITHOUT WRITTEN PERMISSION.
COPYRIGHT © 1974 DIGITAL EQUIPMENT CORPORATION

S. 1-0-2201145 DCS 5411023-0-1

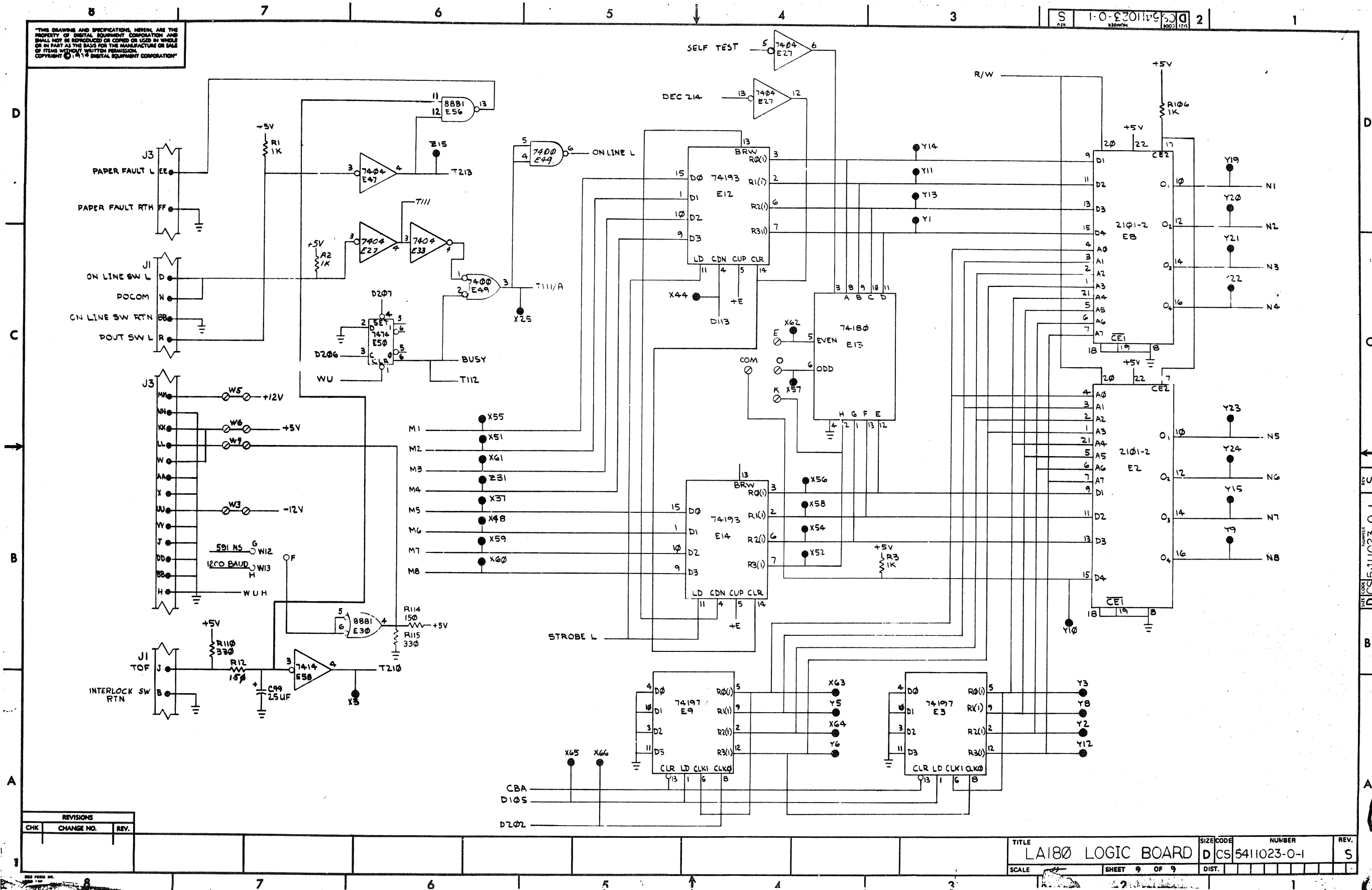








THIS DRAWING AND SPECIFICATIONS HEREIN ARE THE PROPERTY OF DIGITAL EQUIPMENT CORPORATION AND SHALL NOT BE REPRODUCED OR COPIED OR USED IN WHOLE OR IN PART AS THE BASIS FOR THE MANUFACTURE OR SALE OF ITEMS WITHOUT WRITTEN PERMISSION. COPYRIGHT © 1974 DIGITAL EQUIPMENT CORPORATION



REVISIONS		
CHK	CHANGE NO.	REV.

TITLE		SIZE CODE	NUMBER	REV.
LA180 LOGIC BOARD		D	CS 541023-0-1	S
SCALE	SHEET 9 OF 9	DIST.		