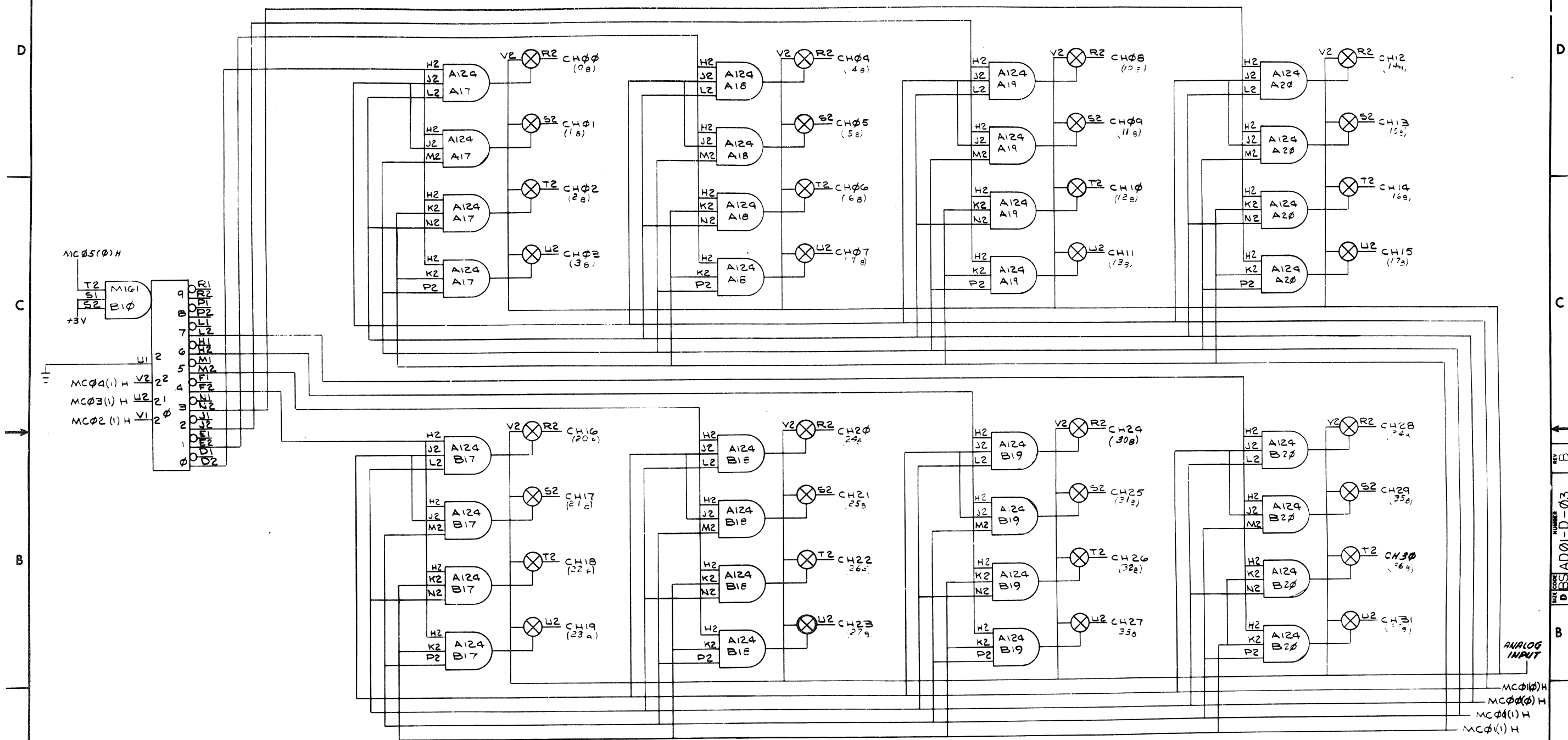


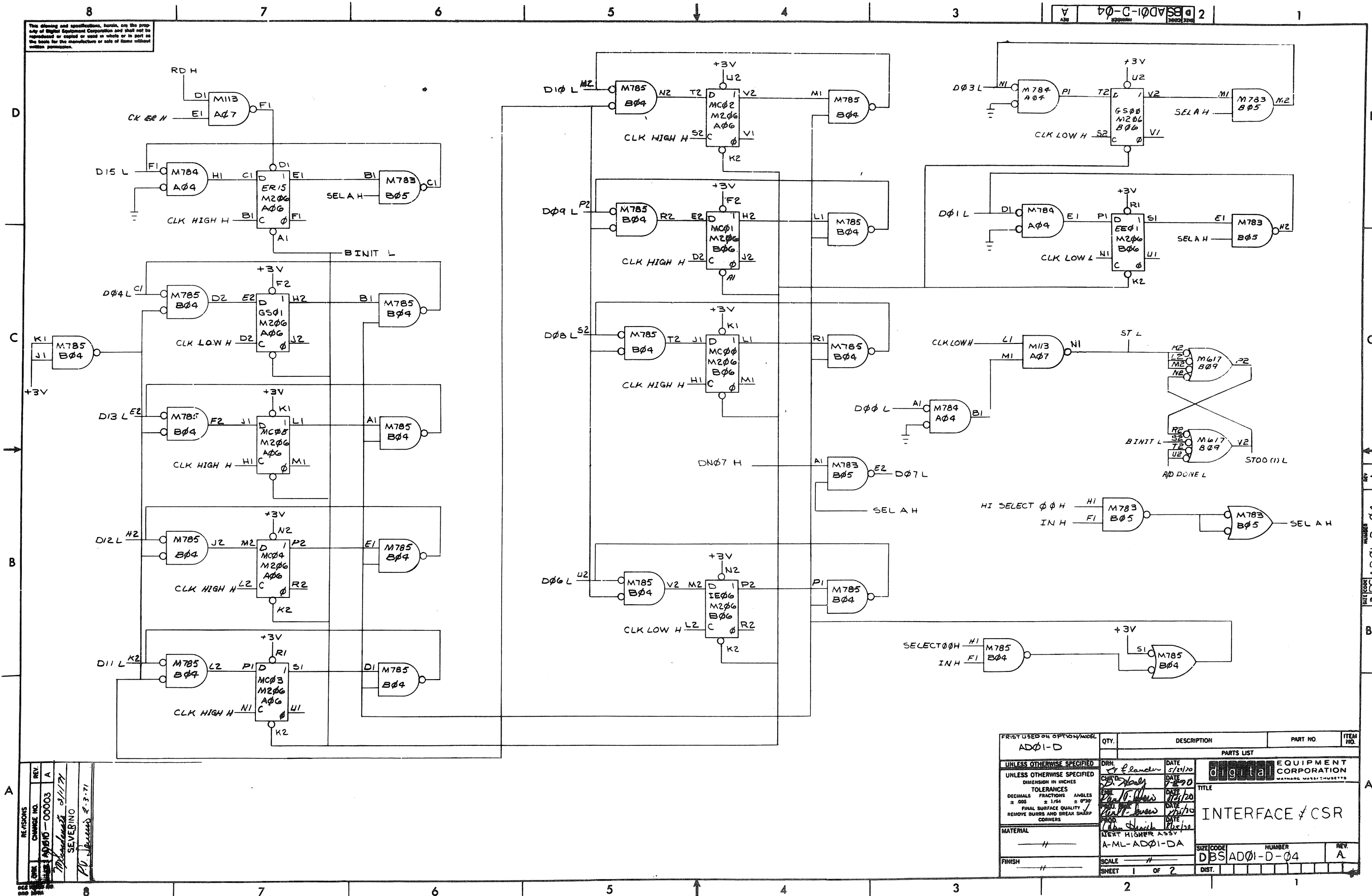
This drawing and specifications, herein, are the property of Digital Equipment Corporation and shall not be reproduced or copied or used in whole or in part as the basis for the manufacture or sale of items without written permission.

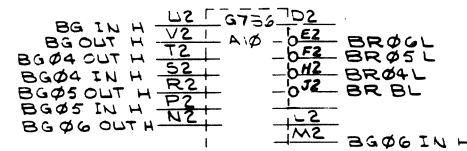


REV	CHANGE NO.	DATE	BY	CHK
A	1	3-1-71	SEVERINO	
B	2	3-1-71	SEVERINO	
C	3	3-1-71	SEVERINO	
D	4	3-1-71	SEVERINO	

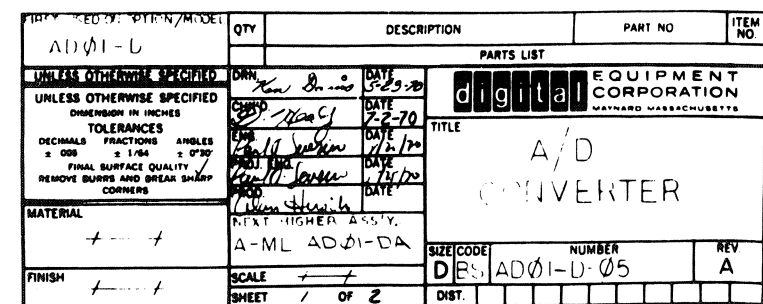
DEC FORM NO. 102A

PARTS LIST		QTY.	DESCRIPTION	PART NO.	ITEM NO.
AD01-D					
UNLESS OTHERWISE SPECIFIED					
DIMENSIONS IN INCHES					
TOLERANCES					
DECIMALS	FRACTIONS	ANGLES			
± .005	± 1/64	± 0°30'			
FINAL SURFACE QUALITY					
REMOVE BURRS AND BREAK SHARP CORNERS					
MATERIAL					
NEXT HIGHER ASSY					
A-ML-AD01-DA					
FINISH					
SCALE					
SHEET OF					
DIST.					
TITLE					
MULTIPLEXER					
SIZE CODE					
D01-AD01-D-03					
NUMBER					
REV.					
B					

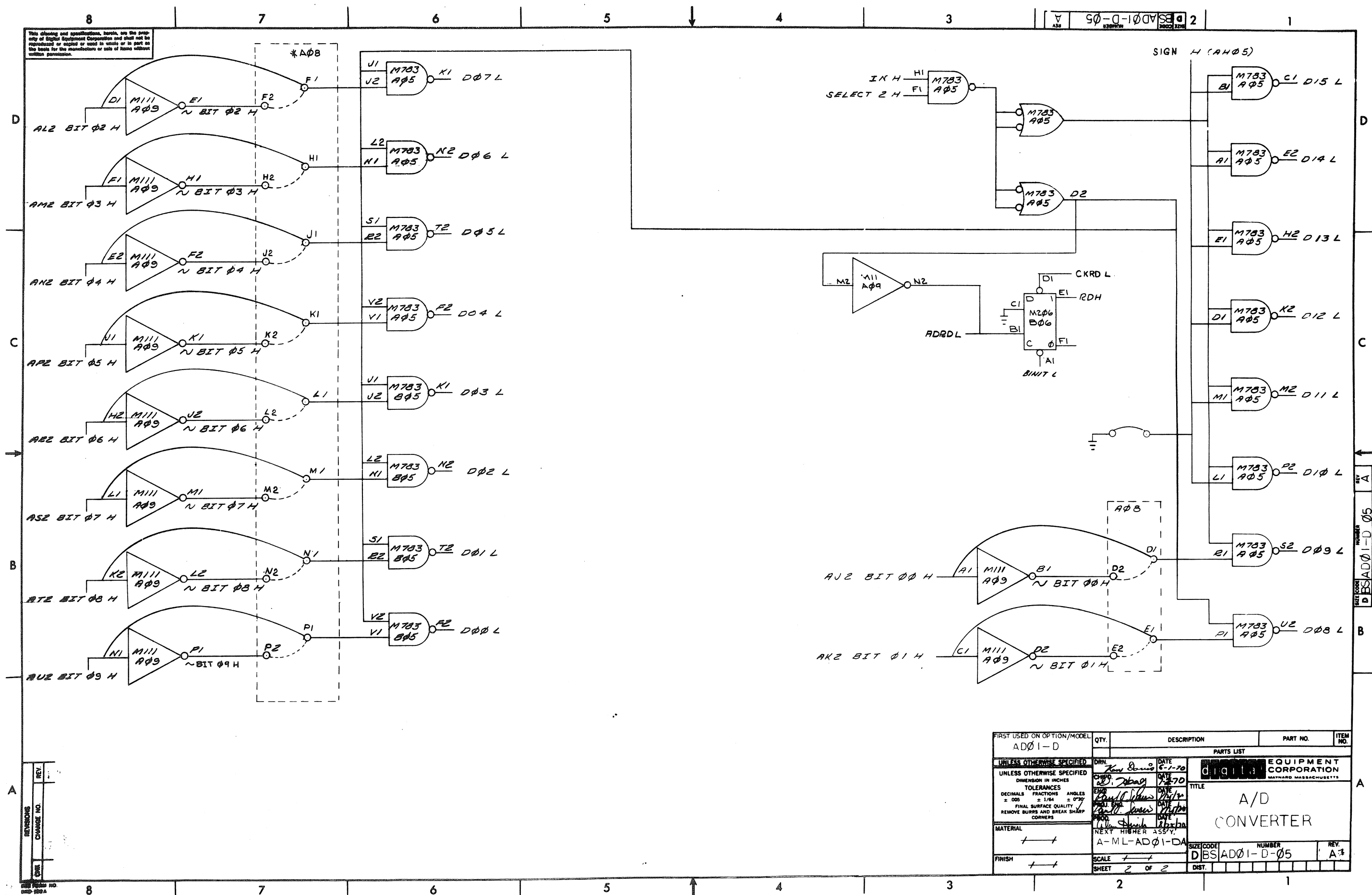




QTY.		DESCRIPTION		PART NO.		ITEM NO.	
				PARTS LIST			
UNLESS OTHERWISE SPECIFIED		DRN <i>87 London</i>		DATE <i>11/1/70</i>		<div style="border: 1px solid black; padding: 5px; display: inline-block;"> digital </div> <div style="display: inline-block; vertical-align: middle;"> EQUIPMENT CORPORATION WATYARD MASSACHUSETTS </div>	
UNLESS OTHERWISE SPECIFIED		CHG'D. <i>Mr. Naddy</i>		DATE <i>11-3-70</i>			
DIMENSION IN INCHES		ENR <i>Mr. T. Swann</i>		DATE <i>11/2/70</i>			
TOLERANCES		PROJ. ENG. <i>Mr. T. Swann</i>		DATE <i>11/2/70</i>			
DECIMALS FRACTIONS ANGLES		FPOD <i>W. C. Church</i>		DATE <i>1/25/71</i>		TITLE <div style="font-size: 2em; font-weight: bold;">INTERFACE & CSR</div>	
± .005 ± .1/64 ± .030°							
FINAL SURFACE QUALITY							
REMOVE BURRS AND BREAK SHARP CORNERS							
MATERIAL		FIRST USED ON		SIZE CODE		NUMBER	
_____ //		_____ //		D B S		A D 01-D-04	
FINISH		SCALE		REV.		A	
_____ //		_____ //		D B S		A D 01-D-04	
SHEET		OF		DIST.			
2		2					



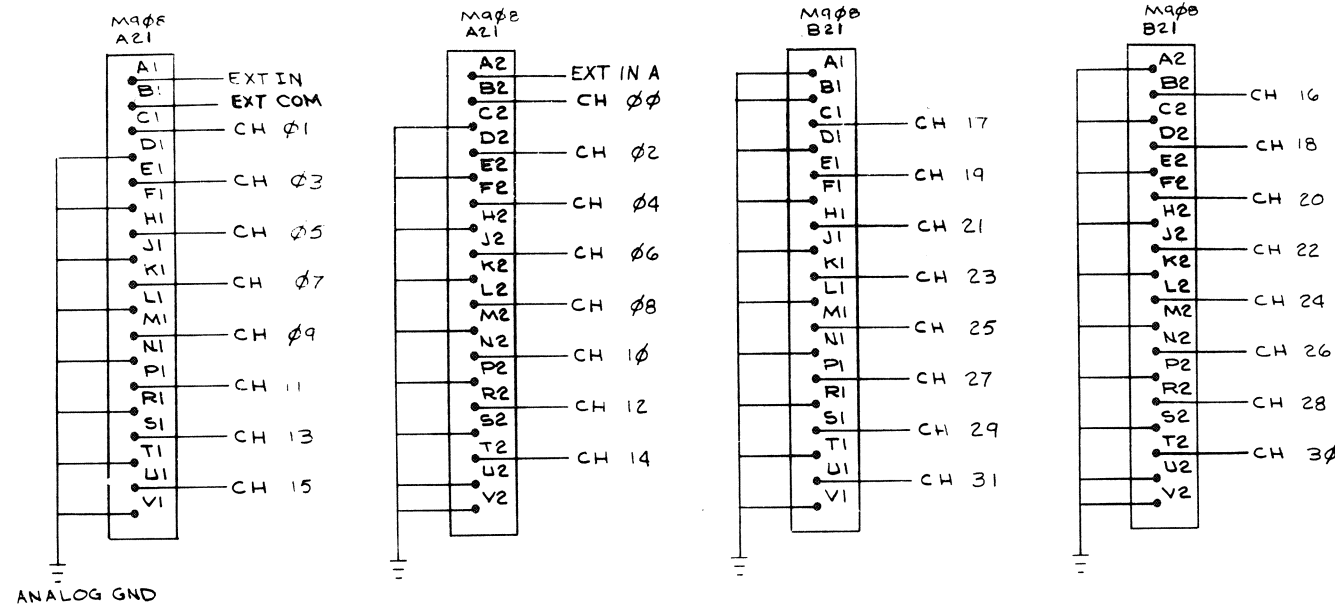
This drawing and specifications, herein, are the property of Digital Equipment Corporation and shall not be reproduced or copied or used in whole or in part as the basis for the manufacture or sale of items without written permission.



FIRST USED ON OPTION/MODEL		QTY.	DESCRIPTION	PART NO.	ITEM NO.
AD01-D					
UNLESS OTHERWISE SPECIFIED		PARTS LIST			
UNLESS OTHERWISE SPECIFIED		DRAWN <i>Ken Davis</i>	DATE <i>6-1-70</i>	EQUIPMENT CORPORATION	
DIMENSION IN INCHES		CHIEF <i>Ed J. Dwyer</i>	DATE <i>7-2-70</i>	MAYNARD, MASSACHUSETTS	
TOLERANCES		ENG <i>Ken J. Davis</i>	DATE <i>7-1-70</i>	TITLE A/D CONVERTER	
DECIMALS FRACTIONS ANGLES		TEST ENGR <i>Ken J. Davis</i>	DATE <i>7-1-70</i>		
± .005 ± 1/64 ± 0°30'		DATE <i>7-1-70</i>			
FINAL SURFACE QUALITY		DATE <i>7-1-70</i>			
REMOVE BURRS AND BREAK SHARP CORNERS					
MATERIAL		NEXT HIGHER ASSY. A-ML-AD01-D-A			
+ +					
FINISH		SIZE CODE NUMBER REV.			
+ +		D B S AD01-D-05 A7			
SCALE		DIST.			
SHEET 2 OF 2					

This drawing and specifications, herein, are the property of Digital Equipment Corporation and shall not be reproduced or quoted or used in whole or in part in the design for the manufacture or sale of items without written permission.

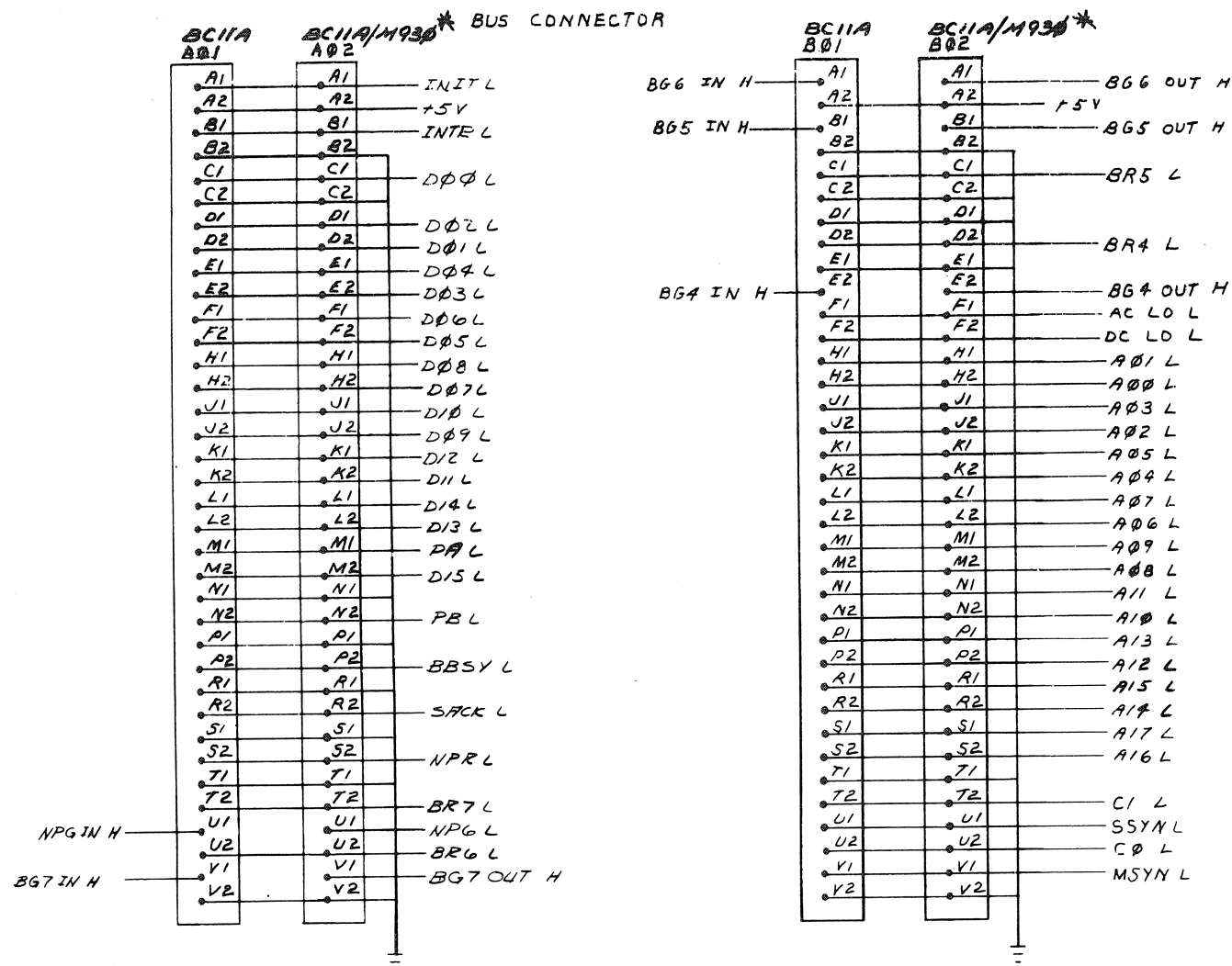
NOTES:
1. NOT APPLICABLE TO LABII. SEE DRAWING D-IC-ADØ1-D-15.



REV		CHG		NO.		REV	
CHG		NO.		REV		NO.	
A		0000		0003		A	
B		0001		0006		B	
C		0002		0008		C	
D		0003		0010		D	
E		0004		0012		E	
F		0005		0014		F	
G		0006		0016		G	
H		0007		0018		H	
I		0008		0020		I	
J		0009		0022		J	
K		0010		0024		K	
L		0011		0026		L	
M		0012		0028		M	
N		0013		0030		N	
O		0014		0032		O	
P		0015		0034		P	
Q		0016		0036		Q	
R		0017		0038		R	
S		0018		0040		S	
T		0019		0042		T	
U		0020		0044		U	
V		0021		0046		V	
W		0022		0048		W	
X		0023		0050		X	
Y		0024		0052		Y	
Z		0025		0054		Z	
AA		0026		0056		AA	
AB		0027		0058		AB	
AC		0028		0060		AC	
AD		0029		0062		AD	
AE		0030		0064		AE	
AF		0031		0066		AF	
AG		0032		0068		AG	
AH		0033		0070		AH	
AI		0034		0072		AI	
AJ		0035		0074		AJ	
AK		0036		0076		AK	
AL		0037		0078		AL	
AM		0038		0080		AM	
AN		0039		0082		AN	
AO		0040		0084		AO	
AP		0041		0086		AP	
AQ		0042		0088		AQ	
AR		0043		0090		AR	
AS		0044		0092		AS	
AT		0045		0094		AT	
AU		0046		0096		AU	
AV		0047		0098		AV	
AW		0048		0100		AW	
AX		0049		0102		AX	
AY		0050		0104		AY	
AZ		0051		0106		AZ	
BA		0052		0108		BA	
BB		0053		0110		BB	
BC		0054		0112		BC	
BD		0055		0114		BD	
BE		0056		0116		BE	
BF		0057		0118		BF	
BG		0058		0120		BG	
BH		0059		0122		BH	
BI		0060		0124		BI	
BJ		0061		0126		BJ	
BK		0062		0128		BK	
BL		0063		0130		BL	
BM		0064		0132		BM	
BN		0065		0134		BN	
BO		0066		0136		BO	
BP		0067		0138		BP	
BQ		0068		0140		BQ	
BR		0069		0142		BR	
BS		0070		0144		BS	
BT		0071		0146		BT	
BU		0072		0148		BU	
BV		0073		0150		BV	
BW		0074		0152		BW	
BX		0075		0154		BX	
BY		0076		0156		BY	
BZ		0077		0158		BZ	
CA		0078		0160		CA	
CB		0079		0162		CB	
CC		0080		0164		CC	
CD		0081		0166		CD	
CE		0082		0168		CE	
CF		0083		0170		CF	
CG		0084		0172		CG	
CH		0085		0174		CH	
CI		0086		0176		CI	
CJ		0087		0178		CJ	
CK		0088		0180		CK	
CL		0089		0182		CL	
CM		0090		0184		CM	
CN		0091		0186		CN	
CO		0092		0188		CO	
CP		0093		0190		CP	
CQ		0094		0192		CQ	
CR		0095		0194		CR	
CS		0096		0196		CS	
CT		0097		0198		CT	
CU		0098		0200		CU	
CV		0099		0202		CV	
CW		0100		0204		CW	
CX		0101		0206		CX	
CY		0102		0208		CY	
CZ		0103		0210		CZ	
DA		0104		0212		DA	
DB		0105		0214		DB	
DC		0106		0216		DC	
DD		0107		0218		DD	
DE		0108		0220		DE	
DF		0109		0222		DF	
DG		0110		0224		DG	
DH		0111		0226		DH	
DI		0112		0228		DI	
DJ		0113		0230		DJ	
DK		0114		0232		DK	
DL		0115		0234		DL	
DM		0116		0236		DM	
DN		0117		0238		DN	
DO		0118		0240		DO	
DP		0119		0242		DP	
DQ		0120		0244		DQ	
DR		0121		0246		DR	
DS		0122		0248		DS	
DT		0123		0250		DT	
DU		0124		0252		DU	
DV		0125		0254		DV	
DW		0126		0256		DW	
DX		0127		0258		DX	
DY		0128		0260		DY	
DZ		0129		0262		DZ	
EA		0130		0264		EA	
EB		0131		0266		EB	
EC		0132		0268		EC	
ED		0133		0270		ED	
EE		0134		0272		EE	
EF		0135		0274		EF	
EG		0136		0276		EG	
EH		0137		0278		EH	
EI		0138		0280		EI	
EJ		0139		0282		EJ	
EK		0140		0284		EK	
EL		0141		0286		EL	
EM		0142		0288		EM	
EN		0143		0290		EN	
EO		0144		0292		EO	
EP		0145		0294		EP	
EQ		0146		0296		EQ	
ER		0147		0298		ER	
ES		0148		0300		ES	
ET		0149		0302		ET	
EU		0150		0304		EU	
EV		0151		0306		EV	
EW		0152		0308		EW	
EX		0153		0310		EX	
EY		0154		0312		EY	
EZ		0155		0314		EZ	
FA		0156		0316		FA	
FB		0157		0318		FB	
FC		0158		0320		FC	
FD		0159		0322		FD	
FE		0160		0324		FE	
FF		0161		0326		FF	
FG		0162		0328		FG	
FH		0163		0330		FH	
FI		0164		0332		FI	
FJ		0165		0334		FJ	
FK		0166		0336		FK	
FL		0167		0338		FL	
FM		0168		0340		FM	
FN		0169		0342		FN	
FO		0170		0344		FO	
FP		0171		0346		FP	
FQ		0172		0348		FQ	
FR		0173		0350		FR	
FS		0174		0352		FS	
FT		0175		0354		FT	
FU		0176		0356		FU	
FV		0177		0358		FV	
FW		0178		0360		FW	
FX		0179		0362		FX	
FY		0180		0364		FY	
FZ		0181		0366		FZ	
GA		0182		0368		GA	
GB		0183		0370		GB	
GC		0184		0372		GC	
GD		0185		0374		GD	
GE		0186		0376		GE	
GF		0187		0378		GF	
GG		0188		0380		GG	
GH		0189		0382		GH	
GI		0190		0384		GI	
GH		0191		0386		GH	
GL		0192		0388		GL	
GN		0193		0390		GN	
GO		0194		0392		GO	
GP		0195		0394		GP	
GQ		0196		0396		GQ	
GR		0197		0398		GR	
GS		0198		0400		GS	
GT		0199		0402		GT	
GU		0200		0404		GU	
GV		0201		0406		GV	
GW		0202		0408		GW	
GX		0203		0410		GX	
GY		0204		0412		GY	
GA		0205		0414		GA	
GB		0206		0416		GB	
GC		0207		0418		GC	
GD		0208		0420		GD	
GE		0209		0422		GE	
GF		0210		0424		GF	
GG		0211		0426		GG	
GH		0212		0428		GH	
GI		0213		0430		GI	
GH		0214		0432		GH	
GL		0215		0434		GL	
GN		0216		0436		GN	
GO		0217		0438		GO	
GP		0218		0440		GP	
GQ		0219		0442		GQ	
GR		0220		0444		GR	
GS		0221		0446		GS	
GT		0222		0448		GT	
GU		0223		0450		GU	
GV		0224		0452		GV	
GW		0225		0454		GW	
GX		0226		0456		GX	
GY		0227		0458		GY	
GA		0228		0460		GA	
GB		0229		0462		GB	
GC		0230		0464		GC	
GD		0231		0466		GD	
GE		0232		0468		GE	
GF		0233		0470		GF	
GG		0234		0472		GG	
GH		0235		0474		GH	
GI		0236		0476		GI	
GH		0237		0478		GH	
GL		0238		0480		GL	
GN		0239		0482		GN	
GO		0240		0484		GO	
GP		0241		0486		GP	
GQ		0242		0488		GQ	
GR		0243		0490		GR	
GS		0244		0492		GS	
GT		0245		0494		GT	
GU		0246		0496		GU	
GV		0247		0498		GV	
GW		0248		0500		GW	
GX		0249		0502		GX	
GY		0250		0504		GY	
GA		0251		0506		GA	
GB		0252		0508		GB	
GC		0253		0510		GC	
GD		0254		0512		GD	
GE		0255		0514		GE	
GF		0256		0516		GF	
GG		0257		0518		GG	
GH		0258		0520		GH	
GI		0259		0522		GI	
GH		0260		0524		GH	
GL		0261		0526		GL	
GN		0262		0528		GN	
GO		0263		0530		GO	
GP		0264		0532		GP	
GQ		0265		0534		GQ	
GR		0266</					

This drawing and specifications, herein, are the property of Digital Equipment Corporation and shall not be reproduced, or copied, or used in whole or in part as the basis for the manufacture of items without written permission.

60-C-10001 2



*** NOTE:**

1. FOR A02/B02 IF A01-D
LAST DEVICE ON THE BUS SLOT
A02/B02 HAS IN IT AN M930,
OTHERWISE IT HAS A BC11A.

FIRST USED ON OPTION/MODEL
PDP-11

DO NOT SCALE DIMENSIONS
UNLESS OTHERWISE SPECIFIED
DIMENSION IN INCHES
TOLERANCES
DECIMALS FRACTIONS ANGLES
± .005 ± 1/64 ± 0°30'
FINAL SURFACE QUALITY
REMOVE BURRS AND BREAK SHARP
CORNERS
MATERIAL
FINISH

QTY.	DESCRIPTION	PART NO.	ITEM NO.
PARTS LIST			
DATE 4/5/74 BY [Signature] CHECKED [Signature] DATE 4/5/74 APPROVED [Signature] DATE 4/5/74 NEXT HIGHER ASSY F-ML-R001-DA		EQUIPMENT CORPORATION MAYNARD, MASSACHUSETTS	
TITLE BUS CONNECTOR		REV.	
SCALE 1 OF 1		DICTAD01-D-09	
SHEET 1 OF 1		DICTAD01-D-09	

REVISIONS
CHANGE NO.
REV.
CHK

DEC FORM NO.
ORD 100