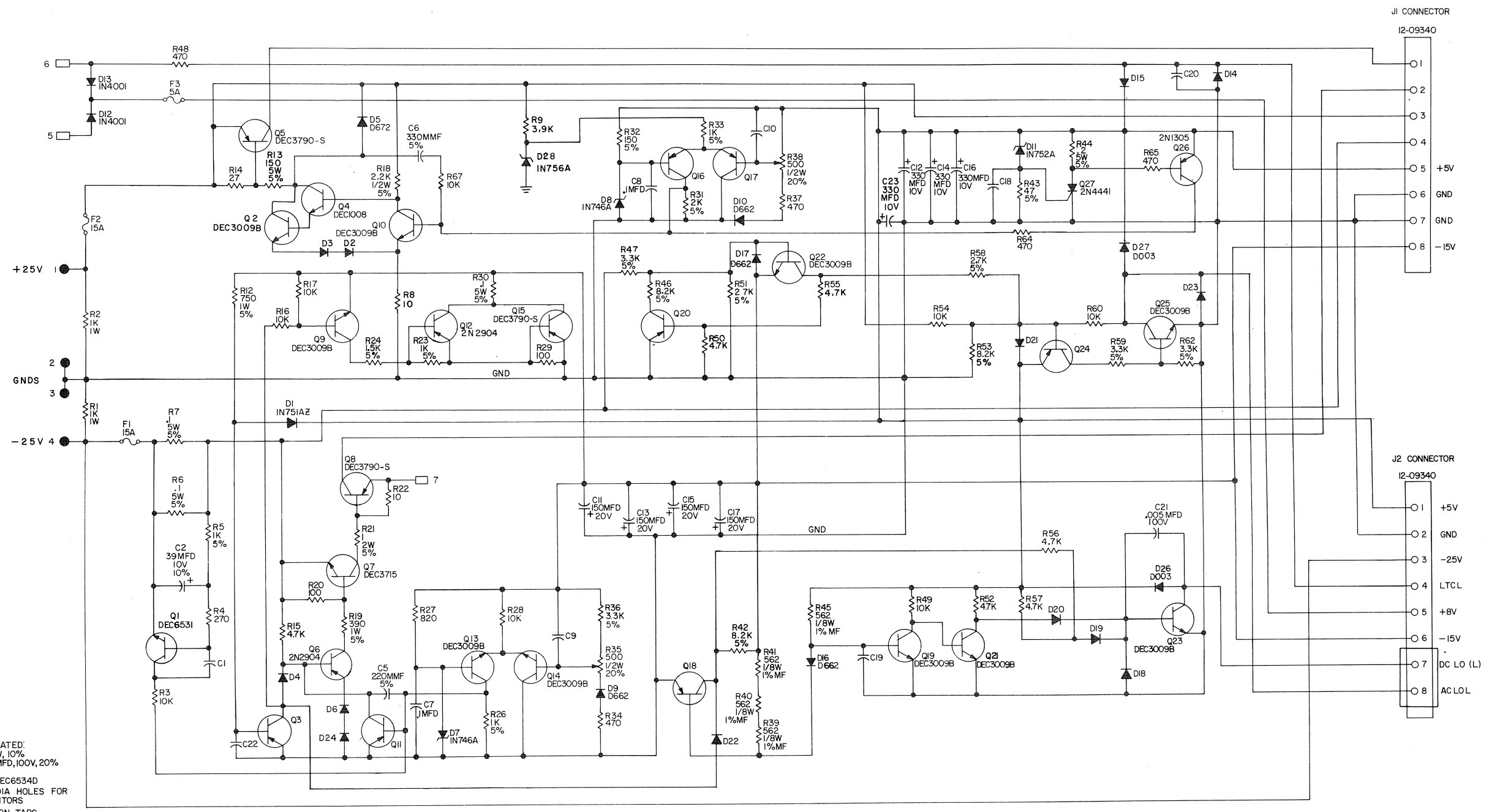


[illegible]

DEC FORM NO.16-1031
DRA 110

THIS SCHEMATIC IS FURNISHED ONLY FOR TEST AND MAINTENANCE PURPOSES. THE CIRCUITS ARE PROPRIETARY IN NATURE AND SHOULD BE TREATED ACCORDINGLY. COPYRIGHT 1971 BY DIGITAL EQUIPMENT CORPORATION.



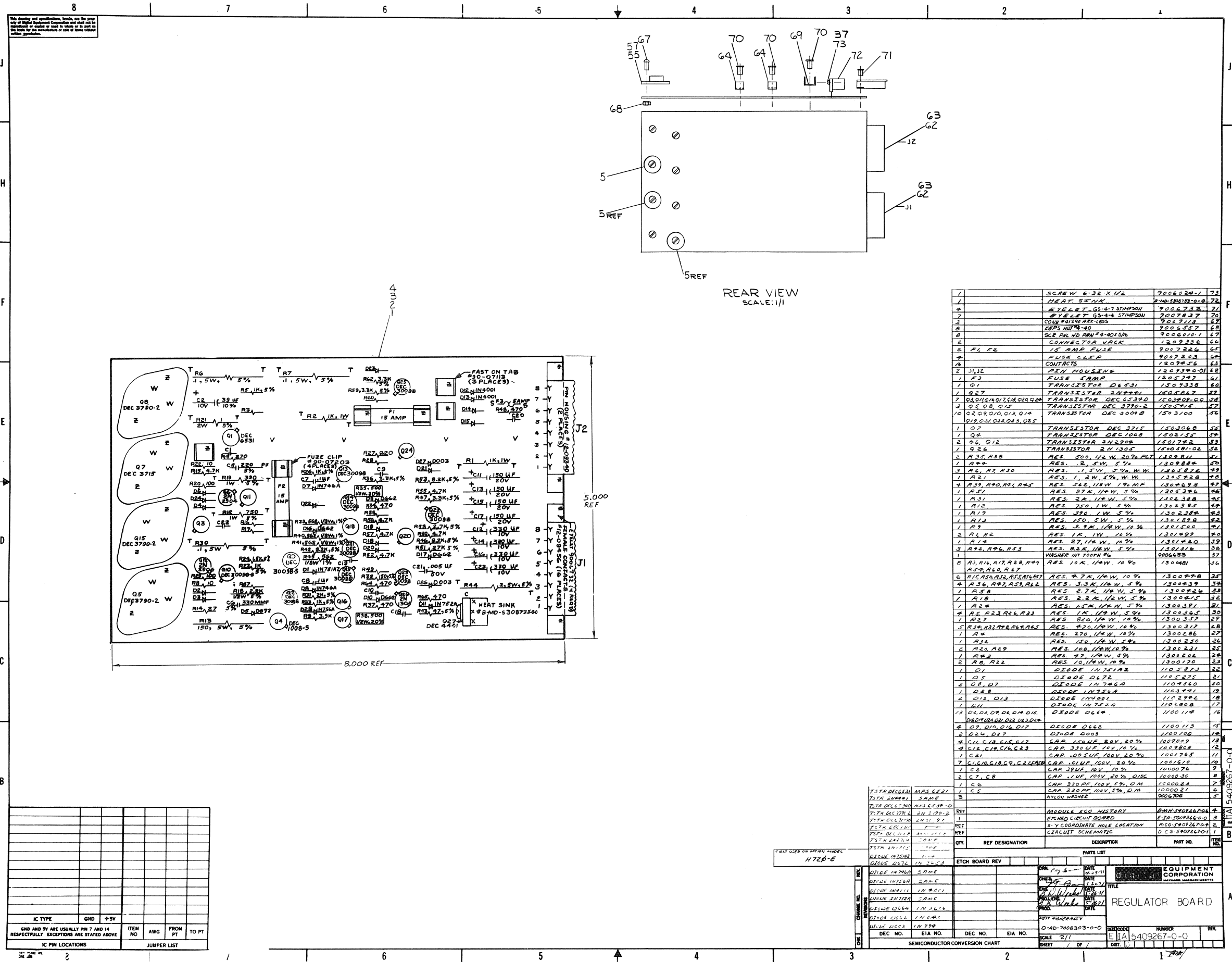
UNLESS OTHERWISE INDICATED:
RESISTORS ARE 1/4W, 10%
CAPACITORS ARE 0.1MFD, 100V, 20%
DIODES ARE D664
TRANSISTORS ARE DEC6534D
● INDICATES 1/16 DIA. HOLES FOR MOUNTING CAPACITORS
□ INDICATES FAST ON TABS

REV	CHG	NO	REV
1			

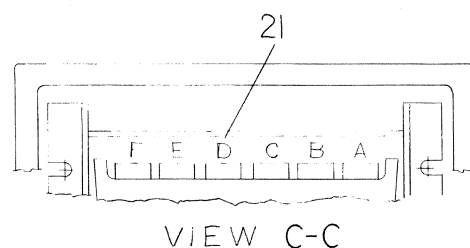
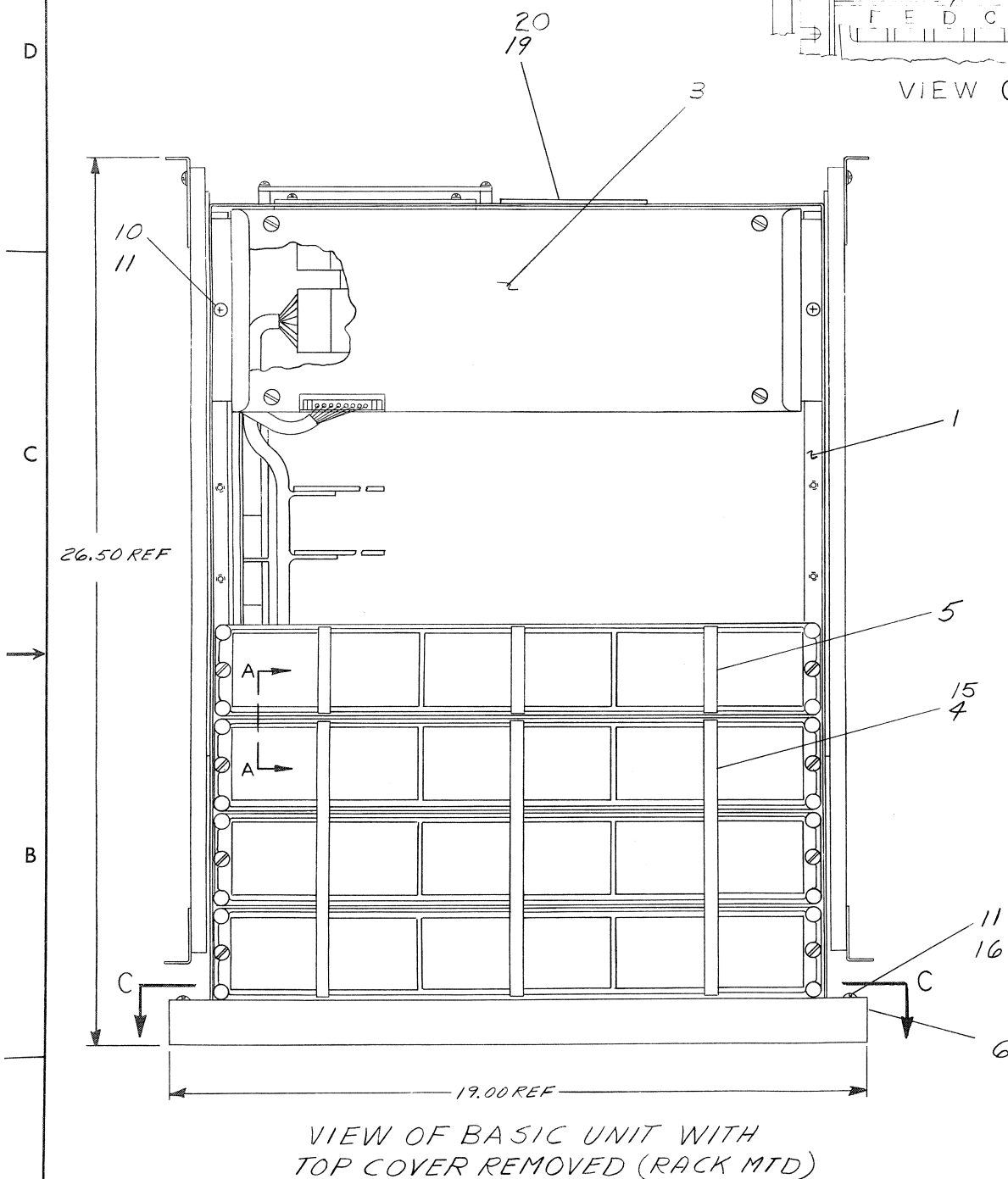
DRN J. Cooper
CHKD J. Cooper
ENG J. Cooper
PROD J. Cooper

TRANSISTOR & DIODE CONVERSION CHART			
DEC	EIA	DEC	EIA
2N1305	SAME	IN756A	IN3653
DEC6531	MP56531	D662	IN752A
2N4441	SAME	D664	IN752A
DEC3715	2N3715	IN756A	IN3653
2N2904	SAME	D662	IN752A
D662	IN645	D664	IN3606
D664	IN3606	IN4001	SAME
IN4001	SAME	DEC3790-S	2N3790
IN756A	SAME	DEC3009B	2N3009B
IN751A2	SAME	DEC1008	MM1008

TITLE REGULATOR BOARD	
5409267	
SIZE D	CODE CS
NUMBER 5409267-0-1	
REV A	
PRINTED CIRCUIT REV. B	

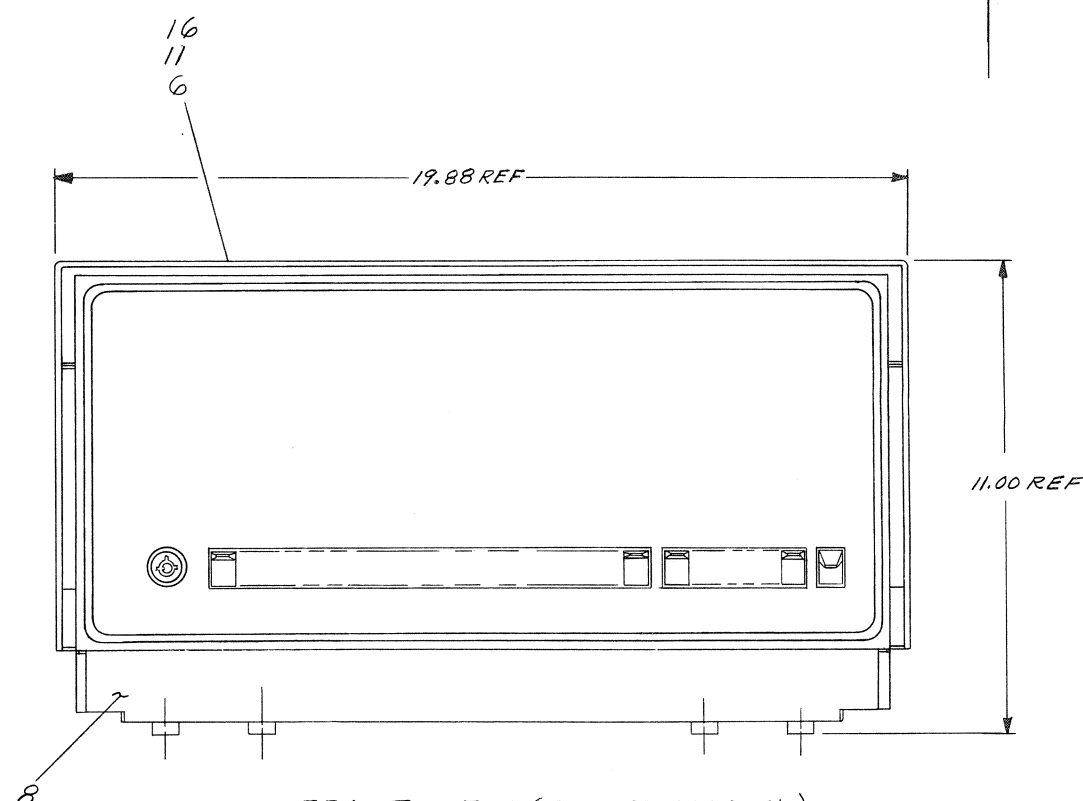


This drawing and specifications, herein, are the property of Digital Equipment Corporation and shall not be reproduced or copied or used in whole or in part as the basis for the manufacture or sale of items without written permission.



LEGEND		
NUMBER	VARIATION	
11/20-AA	RACK MOUNTED, TTY	115V 60HZ
11/20-AB	RACK MOUNTED, TTY	230V 50HZ
11/20-BA	TABLE MODEL, TTY	115V 60HZ
11/20-BB	TABLE MODEL, TTY	230V 50HZ
11/20-CA	CAB. MODEL, TTY	115V 60HZ
11/20-CB	CAB. MODEL, TTY	230V 50HZ
11/20-DA	RACK MOUNTED, TTY — (OEM)	115V 60HZ
11/20-DB	RACK MOUNTED, TTY — (OEM)	230V 50HZ
11/20-EA	TABLE MODEL, TTY — (OEM)	115V 60HZ
11/20-EB	TABLE MODEL, TTY — (OEM)	230V 50HZ
11/20-FA	CAB. MODEL, TTY — (OEM)	115V 60HZ
11/20-FB	CAB. MODEL, TTY — (OEM)	230V 50HZ
11/20-HA	RACK MOUNTED, NOTTY — (OEM)	115V 50/60HZ
11/20-HB	RACK MOUNTED, NOTTY — (OEM)	230V 50/60HZ
11/20-JA	TABLE MODEL, NOTTY — (OEM)	115V 50/60HZ
11/20-JB	TABLE MODEL, NOTTY — (OEM)	230V 50/60HZ
11/20-KA	CAB. MODEL, NO TTY — (OEM)	115V 50/60HZ
11/20-KB	CAB. MODEL, NO TTY — (OEM)	230V 50/60HZ



- # NOTES
1. FOR DWG INDEX LIST REFER TO D-DI-11/20-Ø-1.
 2. HOLES A49 & A50 ARE USED TO MOUNT CHASSIS SLIDE (PART OF ITEM #1) FOR CAB MODEL.
 3. ITEMS #7, 8 & 9 FOR SHIPMENT ONLY, TO BE REMOVED AFTER FINAL SHIPMENT. REAR SCREW OF BRKT TO BE INSTALLED BACK INTO TRACK.
 4. WHEN 6 UNIT SPACES ARE FILLED SYSTEM WILL REQUIRE ADDITIONAL EXPANDER UNIT (ITEM #18) & H72Ø P/S (ITEM #3).
 5. M92Ø INTERNAL BUS CONN SUPPLIED WITH EACH ADDITIONAL LOGIC OPTION. FOR CONNECTING OPTIONS IN BASIC UNIT WITH OPT-IONS IN EXPANDER UNIT (ITEM #18) USE CABLE BC11A-8F-Ø (PART OF ITEM #18).



FRONT VIEW (TABLE MODEL)
OF BASIC UNIT WITH SUPER
COVER. EXPANDER UNIT THE
SAME EXCEPT IN PLACE OF
ITEM #1, 6, 11 & 16 USE ITEM #18

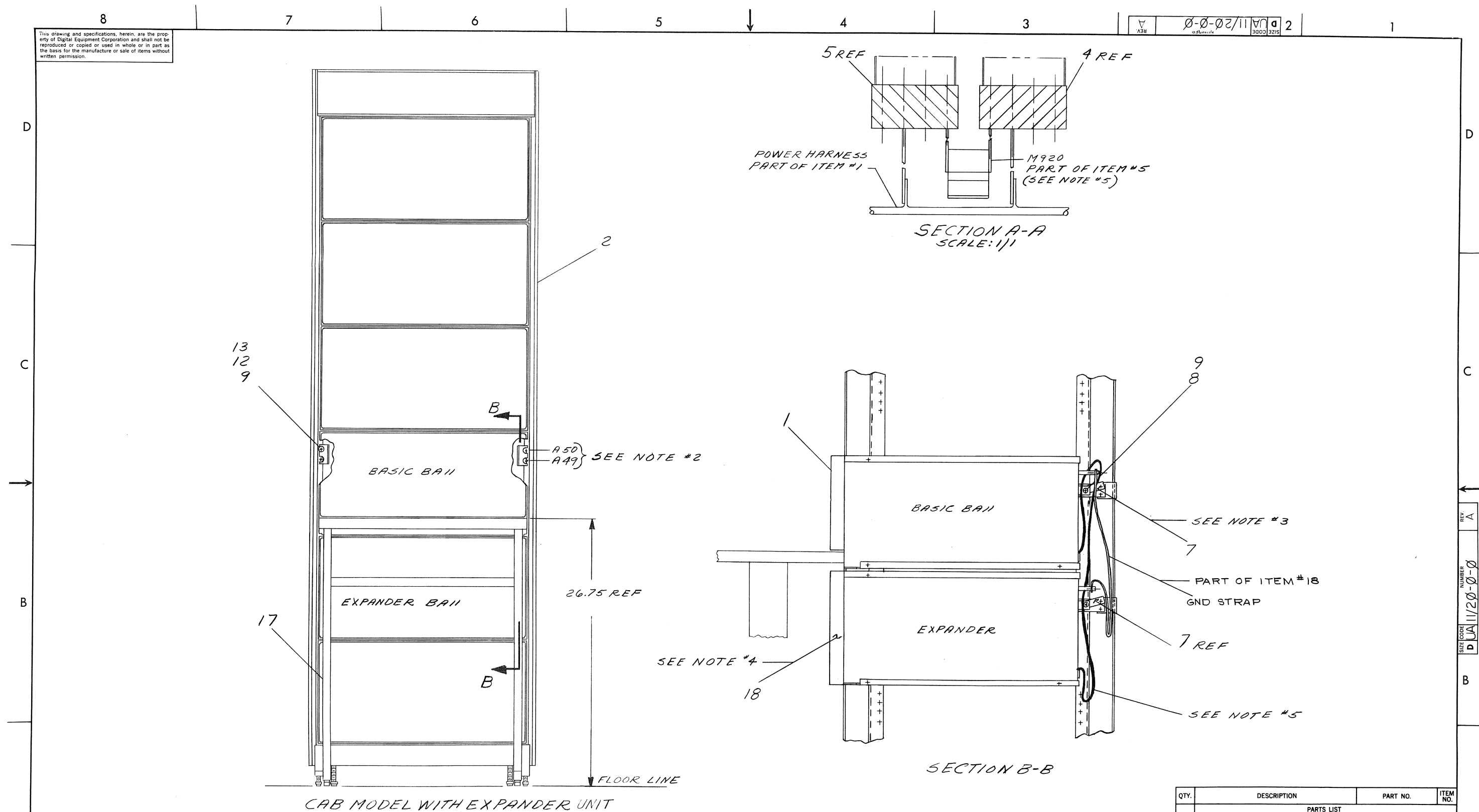
REVISIONS		
CHK	CHANGE NO.	REV
one	11/20-00002	A
H. Guller 5-4-72		
BLASI		
E. K. Giller 5-1-70		

FIRST USED ON OPTION/MODEL
PDP11

DO NOT SCALE DRAWING		
UNLESS OTHERWISE SPECIFIED		
DIMENSION IN INCHES		
TOLERANCES		
DECIMALS	FRACTIONS	ANGLES
± .005	± 1/64	± 0°30'
FINAL SURFACE QUALITY		
REMOVE BURRS AND BREAK SHARP CORNERS		
MATERIAL		
		
FINISH		
		

QTY.	DESCRIPTION				PART NO.				ITEM NO.	
PARTS LIST										
DRN	DATE		<div style="display: flex; align-items: center;"> <div style="border: 1px solid black; padding: 5px; margin-right: 10px;"> digital </div> <div> EQUIPMENT CORPORATION <small>MAYNARD, MASSACHUSETTS</small> </div> </div>							
CHK'D	DATE									
ENG	DATE									
PROJ. ENG.	DATE									
PRD'D	DATE									
NEXT HIGHER ASSY			<div style="border: 1px solid black; padding: 10px;"> <p style="font-size: 24px; margin: 0;">TITLE</p> <p style="font-size: 36px; margin: 10px 0 0 0;">BASIC ASSY/ CONFIGURATION (PDPII)</p> </div>							
A-ML-11/20-0										
SCALE 1/2										
SHEET 1 OF 2										
DIST.										
			SIZE CODE		NUMBER			REV.		
			DUA		11/20-0-0			L		
			DIST.							

This drawing and specifications, herein, are the property of Digital Equipment Corporation and shall not be reproduced or copied or used in whole or in part as the basis for the manufacture or sale of items without written permission.



REV. NO.

CHK

CHANGE NO.

CAB MODEL WITH EXPANDER UNIT

QTY.		DESCRIPTION		PART NO.		ITEM NO.
PARTS LIST						
DRN.		DATE		<div style="display: flex; justify-content: space-around;"> <div style="text-align: center;"> </div> <div style="text-align: center;"> <p>TITLE</p> <p>BASIC ASSEMBLY/ CONFIGURATION (PDP11)</p> </div> </div> <div style="display: flex; justify-content: space-between; margin-top: 10px;"> <div>SIZE CODE</div> <div>NUMBER</div> <div>REV.</div> </div> <div style="display: flex; justify-content: space-between; margin-top: 5px;"> <div>SHEET</div> <div>OF 2</div> <div>DIST.</div> </div>		
CHK'D		DATE				
ENG		DATE				
PROJ. ENG.		DATE				
PROD.		DATE				
MATERIAL		NEXT HIGHER ASSY				
FINISH		SCALE				
		SHEET				

DEF. FORM NO.

DRO 100

8 7 6 5 4 3 2 1

This drawing and specifications, herein, are the property of Digital Equipment Corporation and shall not be reproduced or copied or used in whole or in part as the basis for the manufacture or sale of items without written permission.

NOTES:

1. FOR DWG INDEX LIST REFER TO D-DI-H960-CA-1
2. FOR ASSEMBLY INSTRUCTIONS SEE DWG. D-OC-H950-0-0 & D-OC-H952-0-0.
3. FOR INSTALLATION IN PDP11 SYSTEM REFER TO DWG D-UA-PDP11-20-0.

VIEW A-A
SCALE: NONE
VIEW SHOWN MINUS ITEMS 2 & 3

QTY.	DESCRIPTION	PART NO.	ITEM NO.
PARTS LIST			
digital EQUIPMENT CORPORATION MAYNARD, MASSACHUSETTS			
TITLE			
CABINET ASSY (PDP11)			
NEXT HIGHER ASSY		SIZE CODE	NUMBER
D-UA-PDP11-20-0		DUA	H960-CA-0
SCALE NONE		DIST.	REV
SHEET 1 OF 1			A

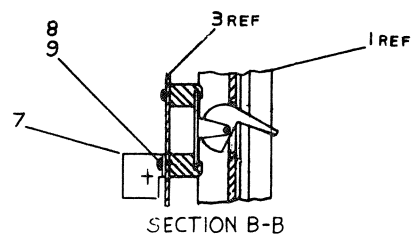
FIRST USED ON OPTION/MODEL
PDP11

DO NOT SCALE DRAWING
UNLESS OTHERWISE SPECIFIED DIMENSION IN INCHES
TOLERANCES
DECIMALS FRACTIONS ANGLES
± .005 ± 1/64 ± 0°30'
FINAL SURFACE QUALITY
REMOVE BURRS AND BREAK SHARP CORNERS
MATERIAL
FINISH

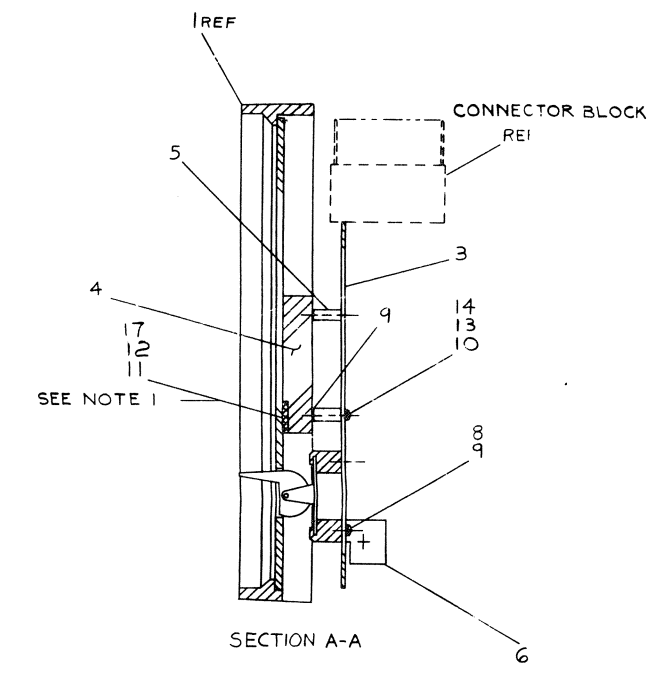
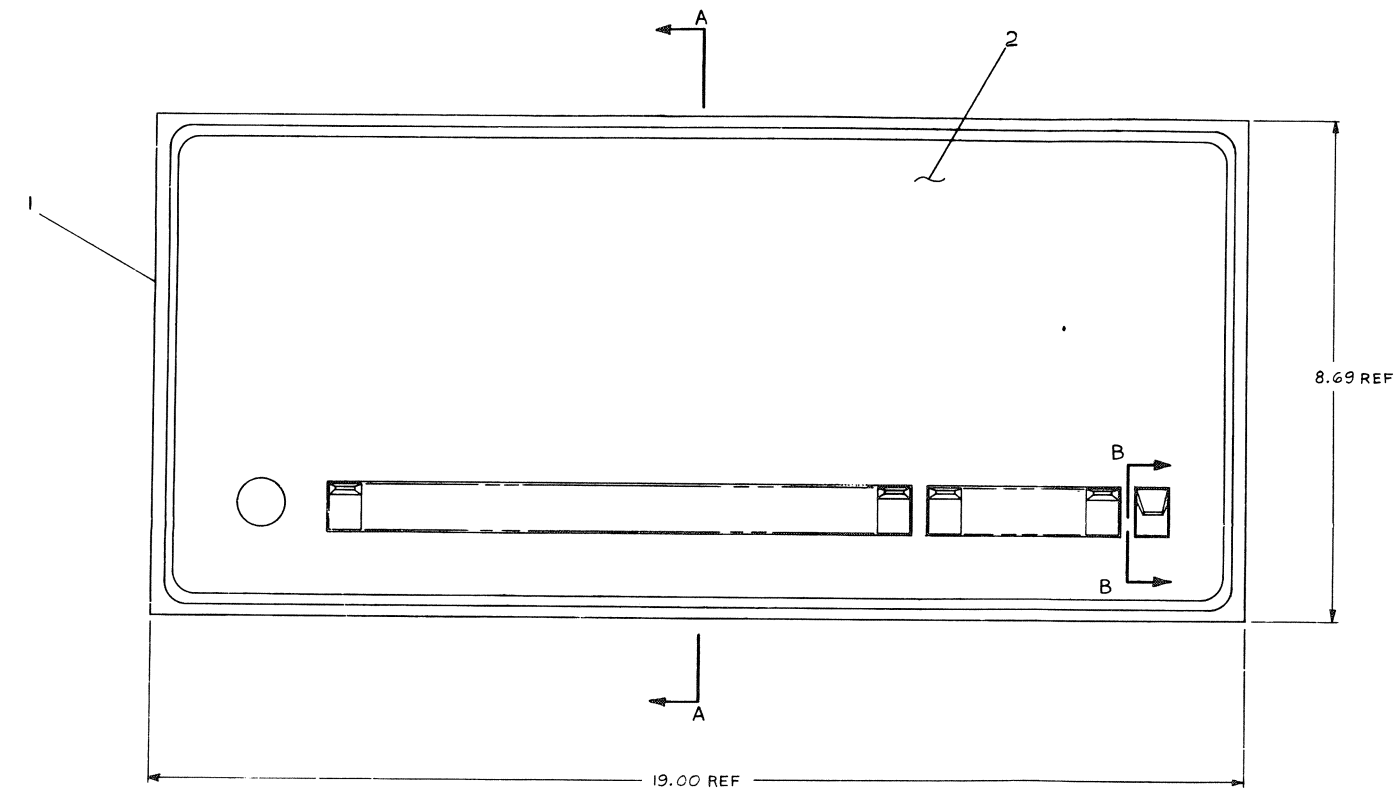
DRN	DATE
CHK'D	DATE
ENG	DATE
PROD. ENG.	DATE
PROD.	DATE

REVISIONS	CHANGE NO.	REV.
1	H960CA - 00001	A
D. NEVADA		
P. 11/10		

DEC FORM NO
DRG 100

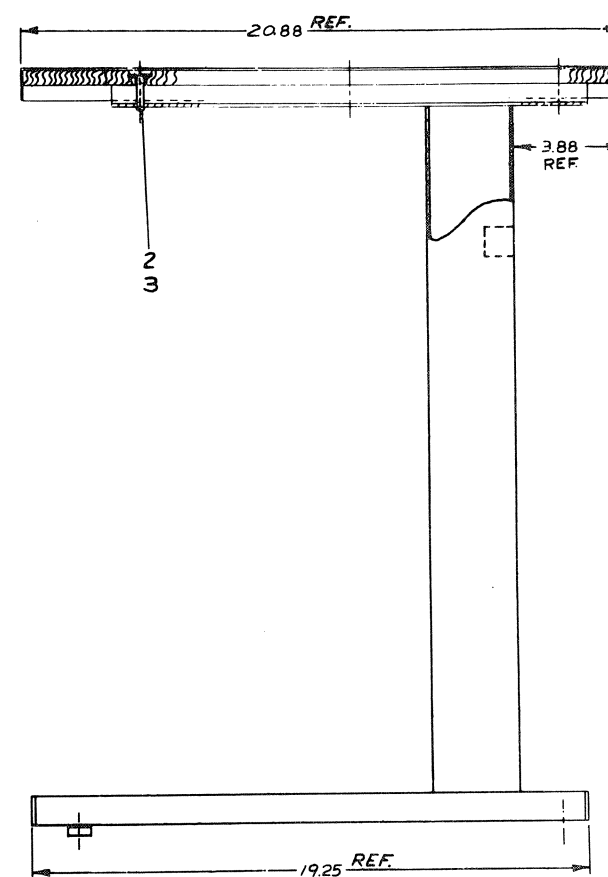
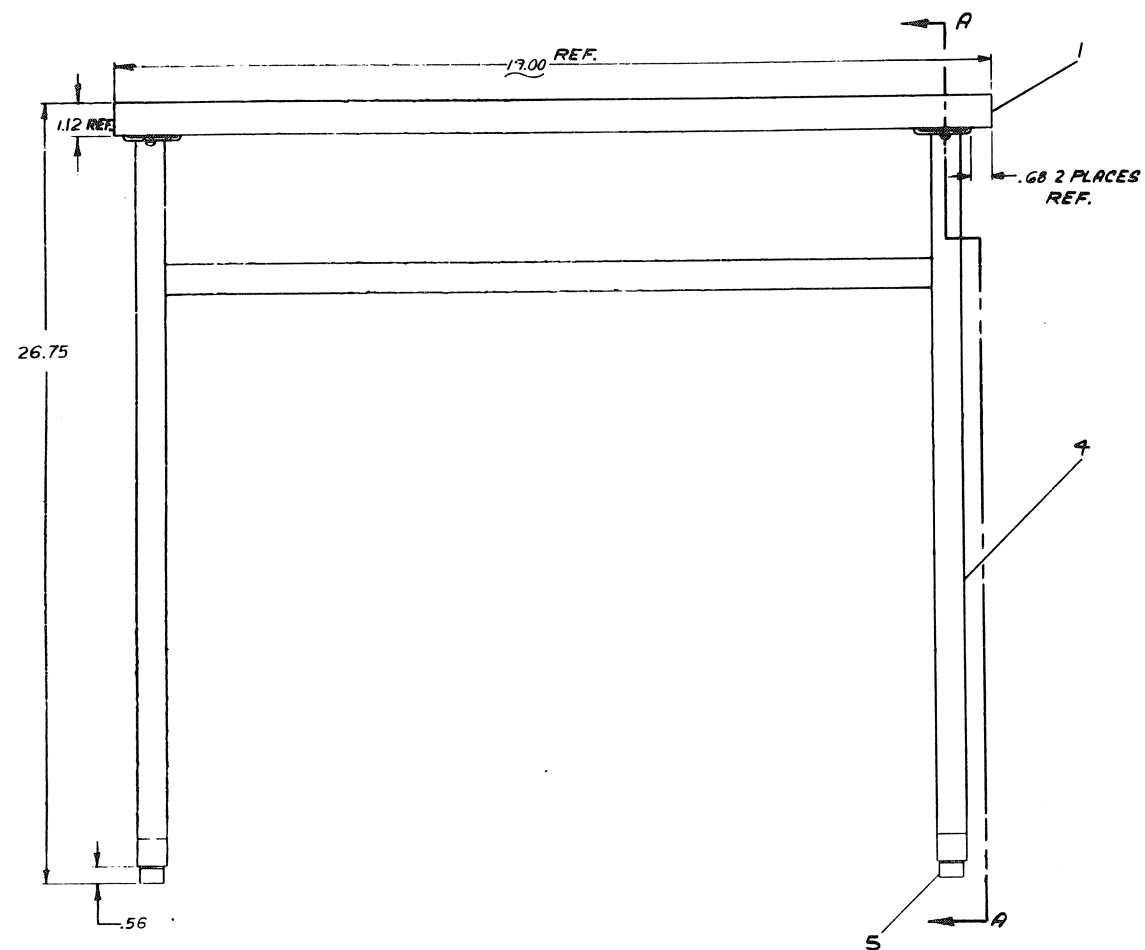


NOTES:
 1. VELCRO TO BE CUT TO FIT SLOT ON PLEXIGLASS SUPPORT (ITEM #4). ATTACH PILE TAPE TO ITEM 4, AND HOOK TAPE TO ITEM 2.



REV	DATE	DESCRIPTION
A	12-27-70	INITIAL
B	12-27-70	INITIAL
C	12-27-70	INITIAL
D	12-27-70	INITIAL
E	12-27-70	INITIAL
F	12-27-70	INITIAL
G	12-27-70	INITIAL
H	12-27-70	INITIAL
I	12-27-70	INITIAL
J	12-27-70	INITIAL

TOLERANCES DECIMALS XXX = .001 XX = .002 X = .005		FIRST USED OR NOT ON CODE PDP-11		QTY	DESCRIPTION	PART NO	ITEM NO
UNLESS OTHERWISE SPECIFIED DIMENSIONS IN INCHES TOLERANCES DECIMALS XXX = .001 XX = .002 X = .005		UNLESS OTHERWISE SPECIFIED DIMENSIONS IN INCHES TOLERANCES DECIMALS XXX = .001 XX = .002 X = .005		DATE 12-27-70	DATE 12-27-70	EQUIPMENT CORPORATION CONTROL ASSY KYIA	
MATERIAL D-1A-PDP-11-2-0		MATERIAL D-1A-PDP-11-2-0		SCALE 1/1	SHEET 1 OF 1	REV C	DIST 10



SECTION A-A

TOLERANCES
DECIMALS
XXX = ±.005
XX = ±.02
X = ±.1

FIRST USED ON OPTION/ MODEL:	QTY.	DESCRIPTION	PART NO.	REV.
PDPII				
UNLESS OTHERWISE SPECIFIED DIMENSIONS IN INCHES		PARTS LIST		
TOLERANCES XXX = ±.005 XX = ±.02 X = ±.1		EQUIPMENT CORPORATION		
MATERIAL ++		TITLE TABLE ASSY.		
FINISH ++		D-UA-PDPII-20-0		
SCALE 1/2"		EUA H952 HA-0		
SHEET 1 OF 1		REV.		

LEGEND	
NUMBER	VARIATION
BAIL-CA	CABINET MODEL (BASIC)
BAIL-ES	CABINET MODEL (BASIC)
BAIL-EC	CABINET MODEL (EXPANDER)
BAIL-ES	CABINET MODEL (EXPANDER)

38
19

36

22
19

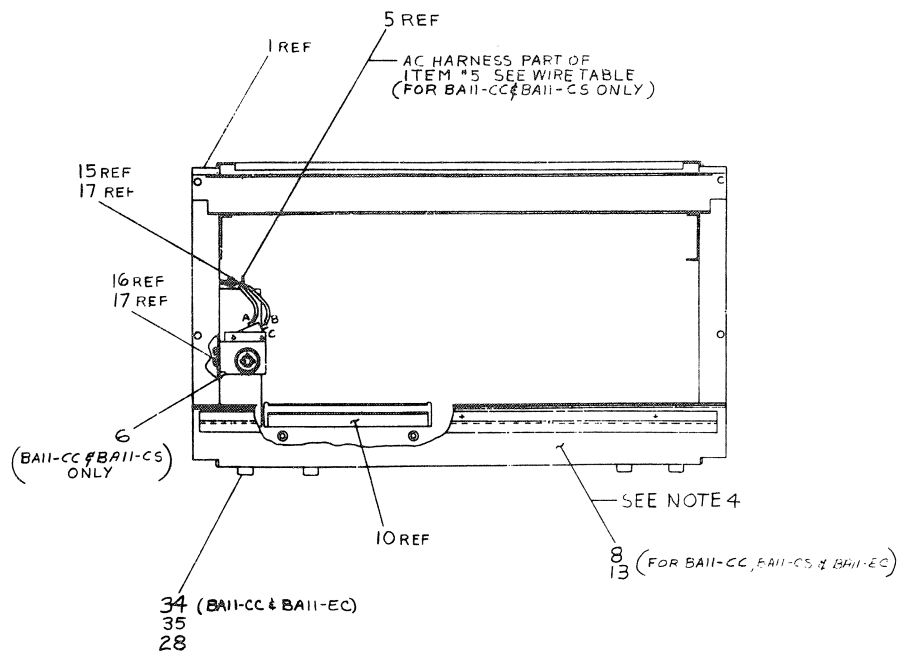
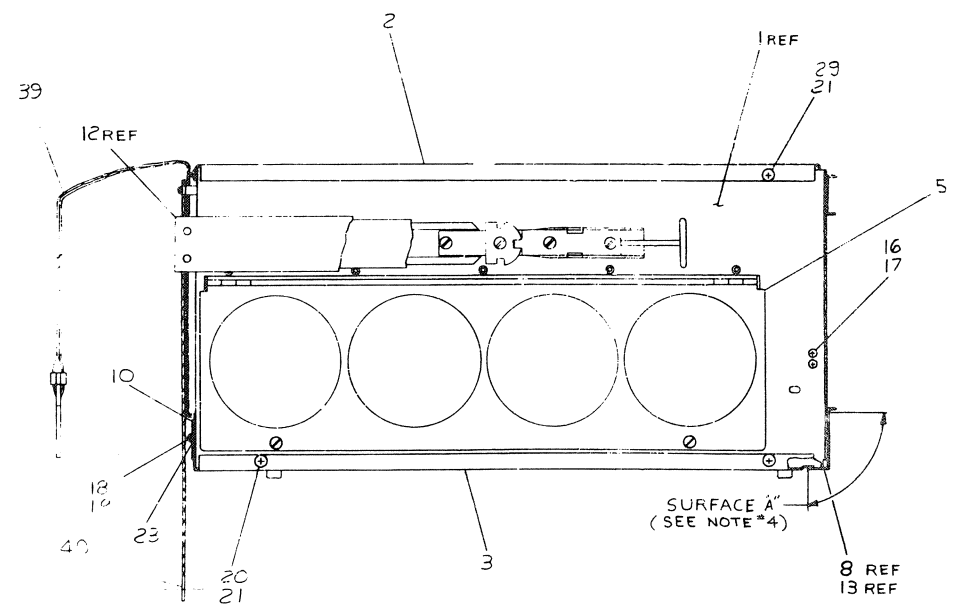
11

33

13

DETAIL B
SHOWING BEZEL ASSY
FOR BAH-EC ONLY

DETAIL A
SHOWING BEZEL ASSY
FOR BAH-ES ONLY



CHK	CHARGE NO	REVENUE
BAIT-00001	7	REV
D. NEVELA		
BAIT-00002	8	REV
D. NEVELA		
BLANK		
BAIT-00005	C	REV
D. NEVELA		
BAIT-00007	D	REV
D. NEVELA		
BAIT-00011	E	REV
D. NEVELA		
BLANK		

FIRST USED ON OPTION MODEL		QTY	DESCRIPTION	PART NO.	ITEM NO.
PCPII					
UNLESS OTHERWISE SPECIFIED		UNIT	DATE	PARTS LIST	
UNLESS OTHERWISE SPECIFIED		QTY	DATE	EQUIPMENT CORPORATION	
CHANGES IN QUANTITY		QTY	DATE	COLUMBIA UNIVERSITY	
TO ORDER		QTY	DATE	TITLE	
FRESH BUSINESS QUALITY		QTY	DATE	CHASSIS ASSEMBLY	
REPAIR PARTS QUALITY		QTY	DATE	(BAII)	
NATURAL		FIRST NUMBER ASSY			
FRESH		D-UA-11-20-B-0			
DIRECT		DIRECTIONS		NUMBER	
		DIRECTIONS		DIRECTIONS	