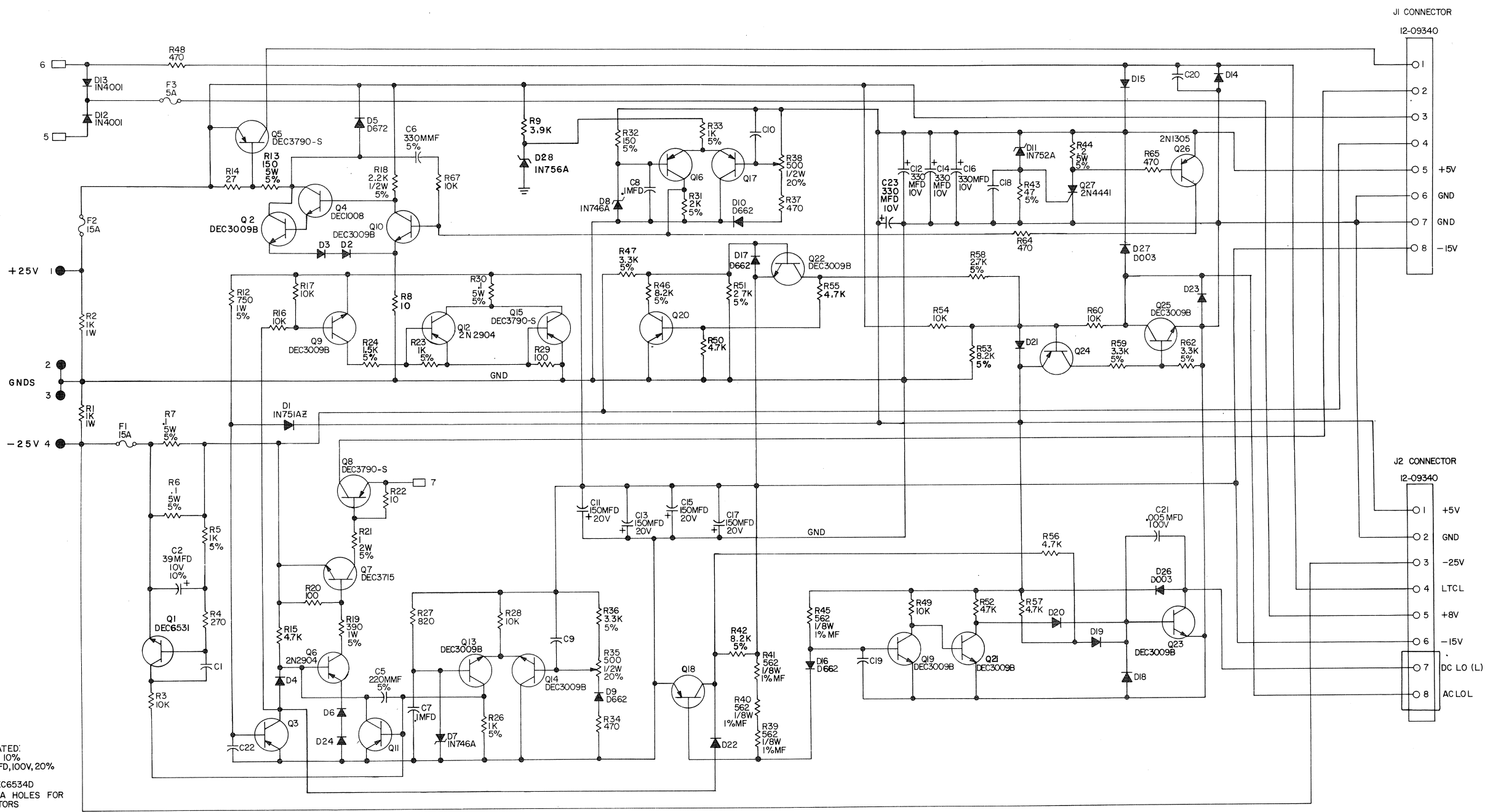


[illegible]

DEC FORM NO.16-1031
DRA 110

THIS SCHEMATIC IS FURNISHED ONLY FOR TEST AND MAINTENANCE PURPOSES. THE CIRCUITS ARE PROPRIETARY IN NATURE AND SHOULD BE TREATED ACCORDINGLY. COPYRIGHT 1971 BY DIGITAL EQUIPMENT CORPORATION.



UNLESS OTHERWISE INDICATED:
RESISTORS ARE 1/4W, 10%
CAPACITORS ARE 0.1MFD, 100V, 20%
DIODES ARE D664
TRANSISTORS ARE DEC6534D
● INDICATES 1/16 DIA. HOLES FOR MOUNTING CAPACITORS
□ INDICATES FAST ON TABS

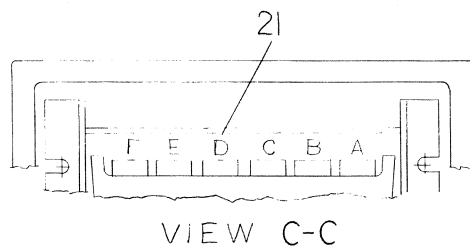
REV	CHK	NO	REV
1		1	

DATE	BY	DATE	BY
1/22/71	J. Cooper	1/22/71	J. Cooper
1/22/71	J. Cooper	1/22/71	J. Cooper
1/22/71	J. Cooper	1/22/71	J. Cooper

TRANSISTOR & DIODE CONVERSION CHART			
DEC	EIA	DEC	EIA
2N1305	SAME	IN756A	IN994
DEC6531	MP56531	D662	IN752A
2N4441	SAME	D662	IN752A
D672	IN3653	D662	IN752A
DEC3715	2N3715	D662	IN752A
2N2904	SAME	D662	IN752A
D662	IN645	D662	IN752A
D664	IN3606	D662	IN752A
IN4001	SAME	D662	IN752A
IN746A	SAME	D662	IN752A
IN751A2	SAME	D662	IN752A
		D662	IN752A

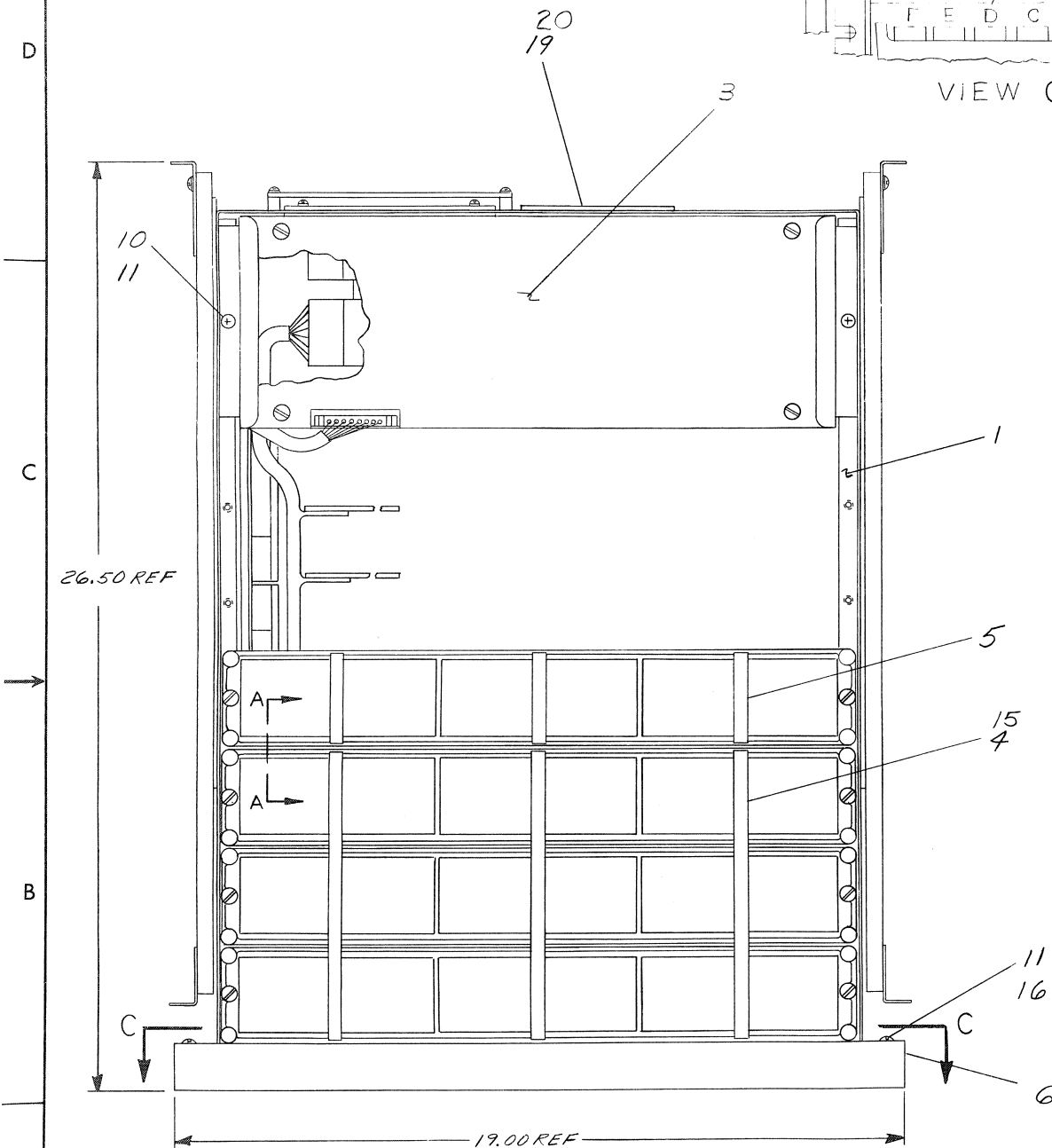
TITLE		REGULATOR BOARD	
NUMBER		5409267	
SIZE	CODE	NUMBER	REV
D	CS	5409267-0-1	A
PRINTED CIRCUIT REV.		B	

This drawing and specifications herein, are the property of Digital Equipment Corporation and shall not be reproduced or copied or used in whole or in part as the basis for the manufacture or sale of items without written permission.

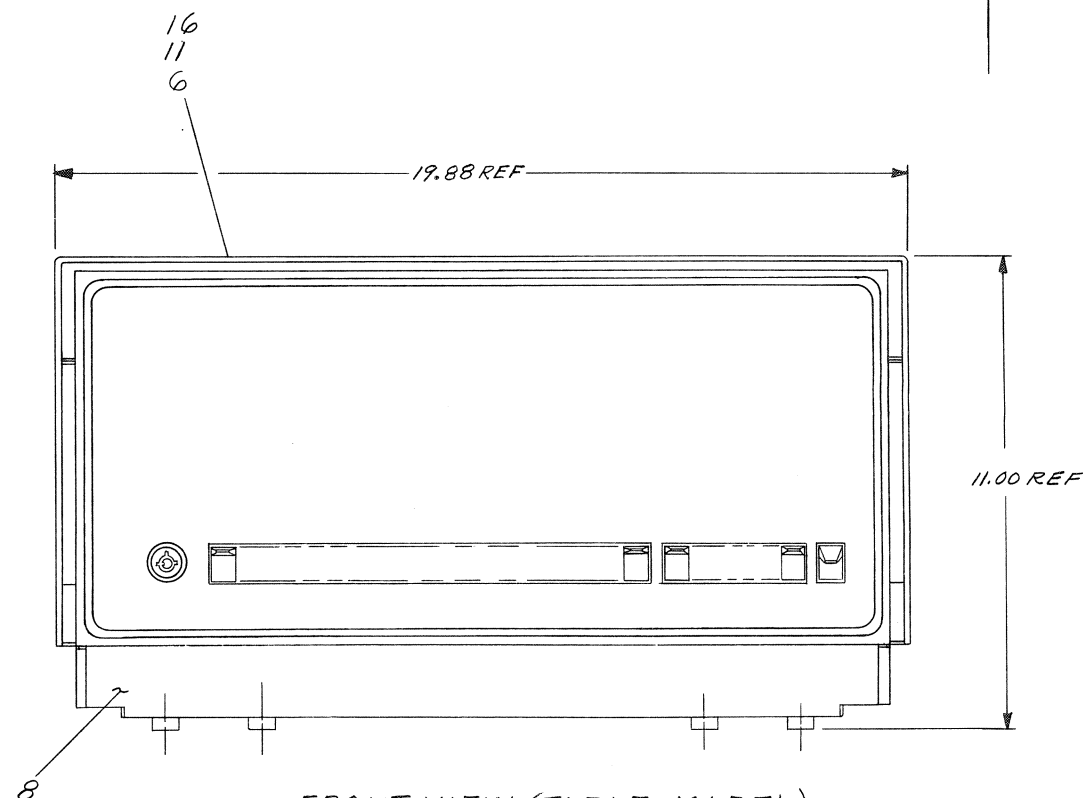


LEGEND		
NUMBER	VARIATION	
11/20-AA	RACK MOUNTED, TTY	115V 60HZ
11/20-AB	RACK MOUNTED, TTY	230V 50HZ
11/20-BA	TABLE MODEL, TTY	115V 60HZ
11/20-BB	TABLE MODEL, TTY	230V 50HZ
11/20-CA	CAB. MODEL, TTY	115V 60HZ
11/20-CB	CAB. MODEL, TTY	230V 50HZ
11/20-DA	RACK MOUNTED, TTY - (OEM)	115V 60HZ
11/20-DB	RACK MOUNTED, TTY - (OEM)	230V 50HZ
11/20-EA	TABLE MODEL, TTY - (OEM)	115V 60HZ
11/20-EB	TABLE MODEL, TTY - (OEM)	230V 50HZ
11/20-FA	CAB. MODEL, TTY - (OEM)	115V 60HZ
11/20-FB	CAB. MODEL, TTY - (OEM)	230V 50HZ
11/20-HA	RACK MOUNTED, NTTY - (OEM)	115V 50/60HZ
11/20-HB	RACK MOUNTED, NTTY - (OEM)	230V 50/60HZ
11/20-JA	TABLE MODEL, NTTY - (OEM)	115V 50/60HZ
11/20-JB	TABLE MODEL, NTTY - (OEM)	230V 50/60HZ
11/20-KA	CAB. MODEL, NO TTY - (OEM)	115V 50/60HZ
11/20-KB	CAB. MODEL, NO TTY - (OEM)	230V 50/60HZ

- NOTES
- FOR DWG INDEX LIST REFER TO D-DI-11/20-0-1.
 - HOLES A9 & A50 ARE USED TO MOUNT CHASSIS SLIDE (PART OF ITEM #1) FOR CAB MODEL.
 - ITEMS #7, 8 & 9 FOR SHIPMENT ONLY, TO BE REMOVED AFTER FINAL SHIPMENT. REAR SCREW OF BRKT TO BE INSTALLED BACK INTO TRACK.
 - WHEN 6 UNIT SPACES ARE FILLED SYSTEM WILL REQUIRE ADDITIONAL EXPANDER UNIT (ITEM #18) & H720 P/S (ITEM #3).
 - M920 INTERNAL BUS CONN SUPPLIED WITH EACH ADDITIONAL LOGIC OPTION. FOR CONNECTING OPTIONS IN BASIC UNIT WITH OPTIONS IN EXPANDER UNIT (ITEM #18) USE CABLE BC11A-8F-0 (PART OF ITEM #18).



VIEW OF BASIC UNIT WITH TOP COVER REMOVED (RACK MTD)



FRONT VIEW (TABLE MODEL) OF BASIC UNIT WITH SUPER COVER. EXPANDER UNIT THE SAME EXCEPT IN PLACE OF ITEM #1, 6, 11 & 16 USE ITEM #18

FIRST USED ON OPTION / MODEL
PDPII

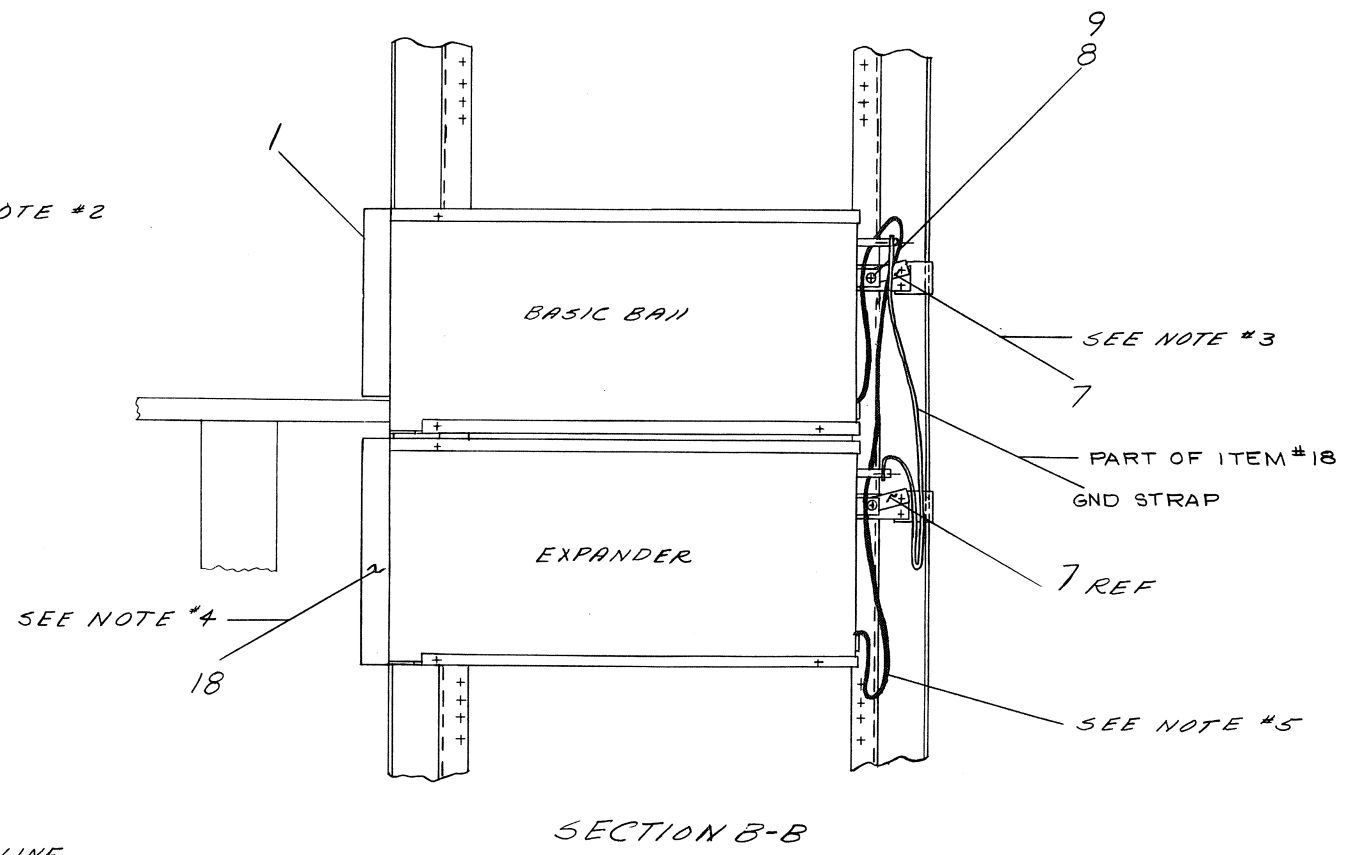
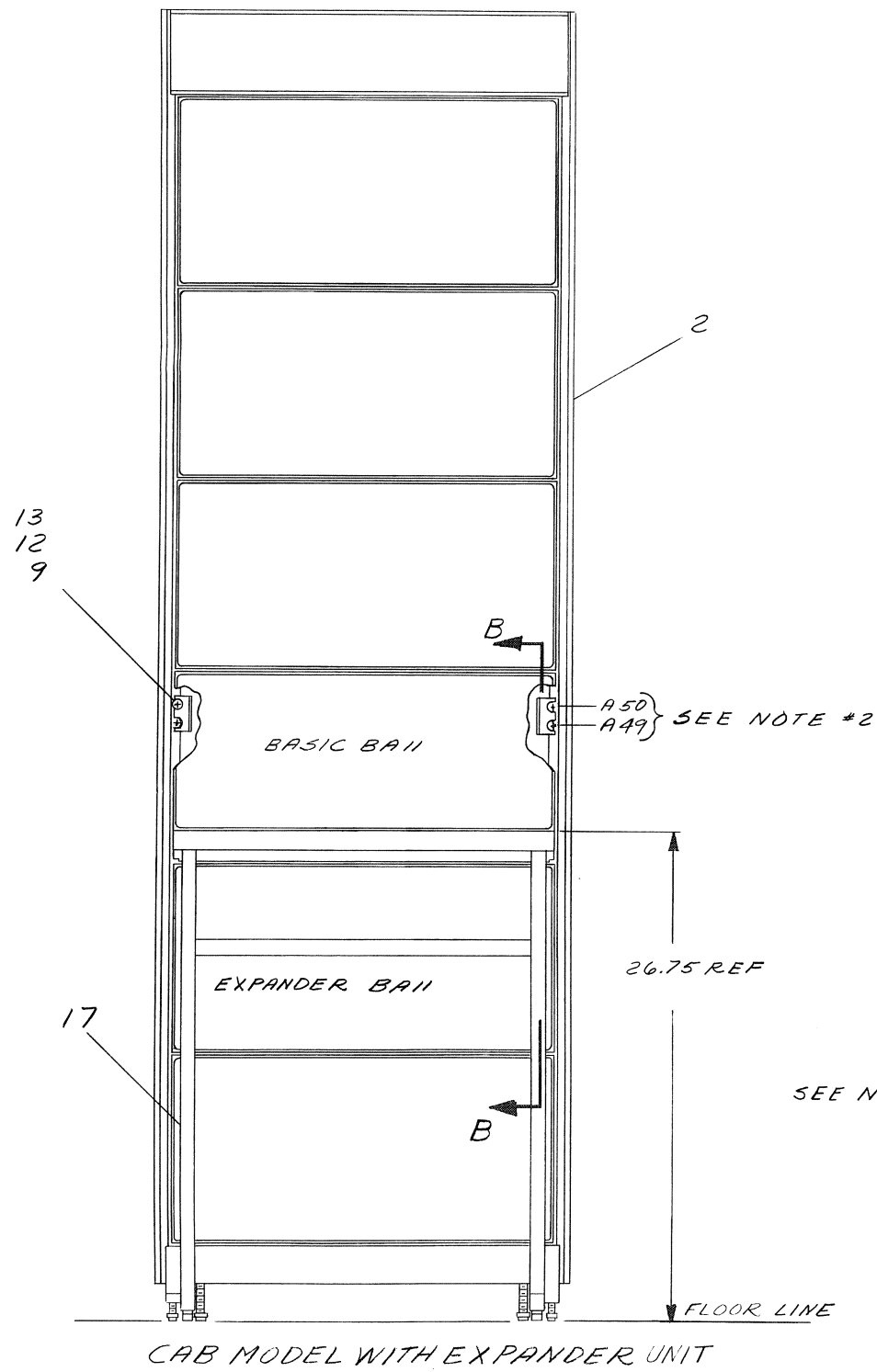
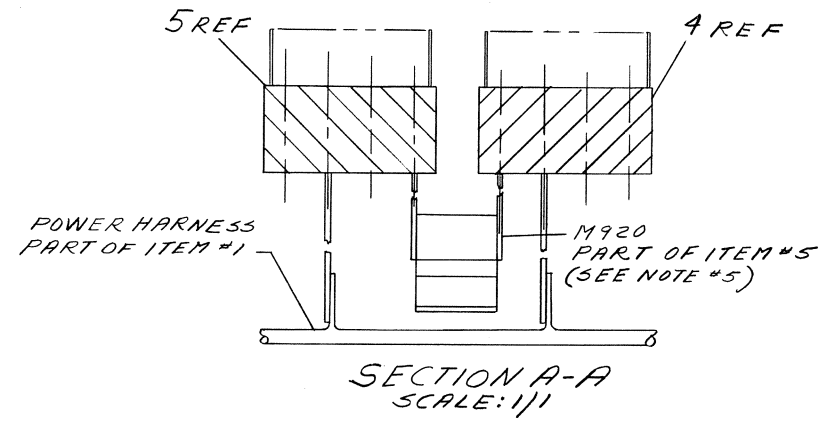
DO NOT SCALE DRAWING
UNLESS OTHERWISE SPECIFIED
DIMENSION IN INCHES
TOLERANCES
DECIMALS FRACTIONS ANGLES
± .005 ± 1/64 ± 0°30'
FINAL SURFACE QUALITY
REMOVE BURRS AND BREAK SHARP CORNERS
MATERIAL
FINISH

QTY.	DESCRIPTION	PART NO.	ITEM NO.
PARTS LIST			
digital EQUIPMENT CORPORATION MAYNARD, MASSACHUSETTS			
TITLE BASIC ASSY/ CONFIGURATION (PDPII)			
SCALE 1/2		NUMBER DUA 11/20-0-0	REV. L
SHEET 1 OF 2		DIST.	

REVISIONS		
IK	CHANGE NO.	REV
es	11/20-00002	A
Blaskin 5.4.72		
BLASI		
C. K. Blasi 5.4.72		

This drawing and specifications, herein, are the property of Digital Equipment Corporation and shall not be reproduced or copied or used in whole or in part as the basis for the manufacture or sale of items without written permission.

0-0-02/11/20-00 2



REV.
1
2
3
4
5
6
7
8
9
10
11
12
13
14
15
16
17
18
19
20
21
22
23
24
25
26
27
28
29
30
31
32
33
34
35
36
37
38
39
40
41
42
43
44
45
46
47
48
49
50
51
52
53
54
55
56
57
58
59
60
61
62
63
64
65
66
67
68
69
70
71
72
73
74
75
76
77
78
79
80
81
82
83
84
85
86
87
88
89
90
91
92
93
94
95
96
97
98
99
100

FIRST USED ON OPTION/MODEL
PDP11

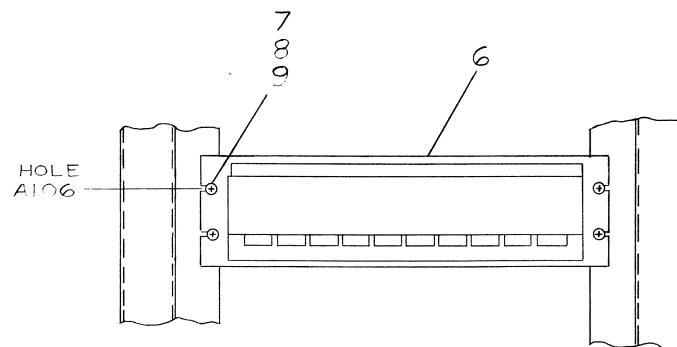
DO NOT SCALE DRAWING
UNLESS OTHERWISE SPECIFIED
DIMENSION IN INCHES
TOLERANCES
DECIMALS FRACTIONS ANGLES
± .005 ± 1/64 ± 0°30'
FINAL SURFACE QUALITY
REMOVE BURRS AND BREAK SHARP CORNERS
MATERIAL
NEXT HIGHER ASSY
FINISH

QTY.	DESCRIPTION	PART NO.	ITEM NO.
PARTS LIST			
digital EQUIPMENT CORPORATION MAYNARD, MASSACHUSETTS			
TITLE BASIC ASSEMBLY/ CONFIGURATION (PDP11)			
SIZE CODE DUA 11/20-0-0		NUMBER REV. A	
SCALE NONE		SHEET 2 OF 2	
DIST. 6		1	

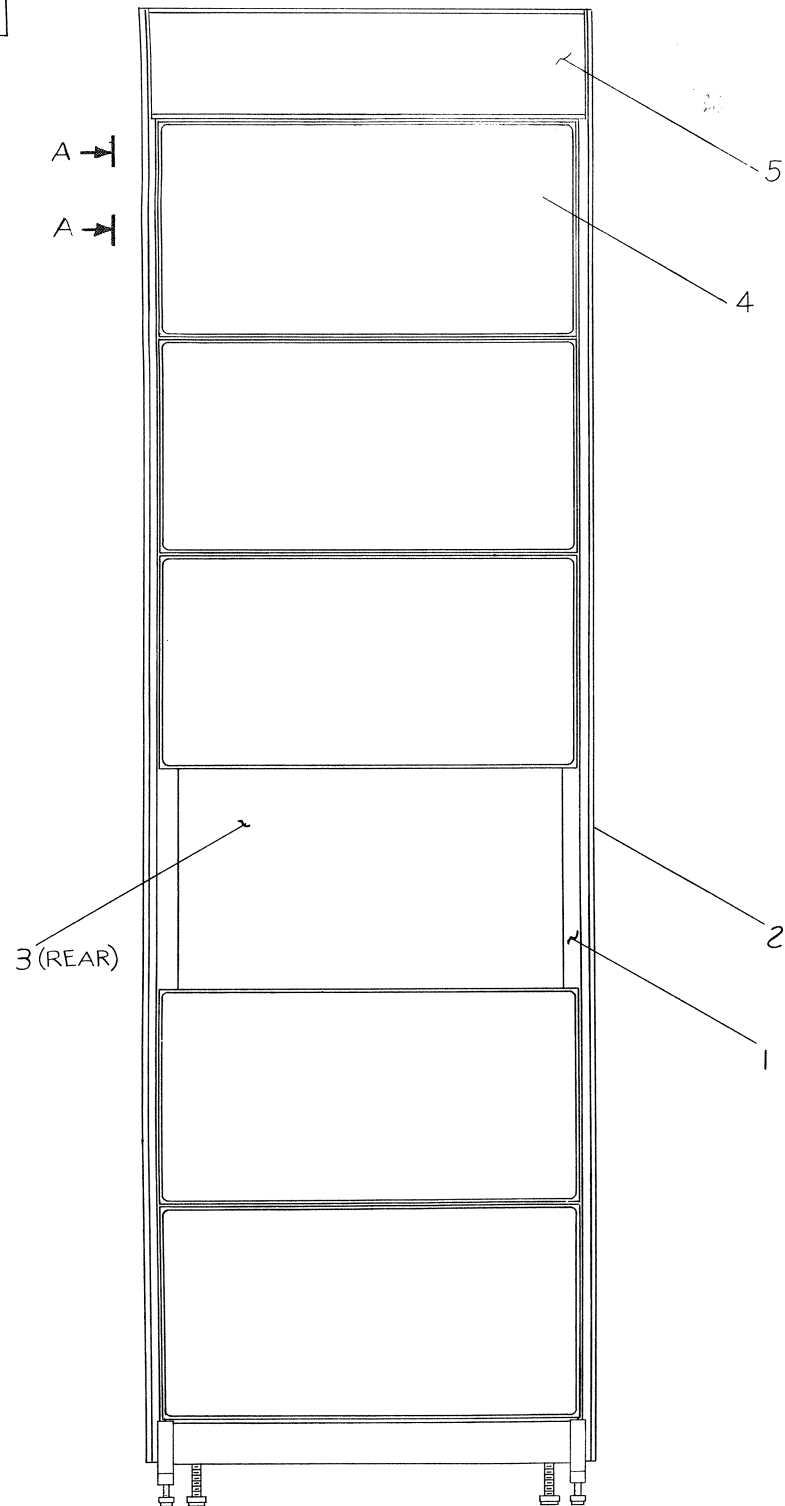
This drawing and specifications, herein, are the property of Digital Equipment Corporation and shall not be reproduced or copied or used in whole or in part as the basis for the manufacture or sale of items without written permission.

NOTES:

1. FOR DWG INDEX LIST REFER TO D-DI-H960-CA-1
2. FOR ASSEMBLY INSTRUCTIONS SEE DWG. D-OC-H950-0-0 & D-OC-H952-0-0.
3. FOR INSTALLATION IN PDP11 SYSTEM REFER TO DWG D-UA-PDP11-20-0.



VIEW A-A
SCALE: NONE
VIEW SHOWN MINUS ITEMS *2, 3, 4

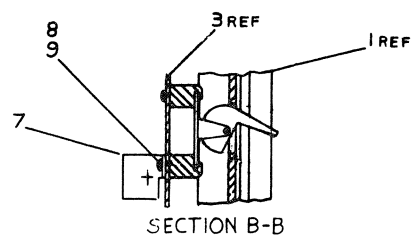


FIRST USED ON OPTION/MODEL
PDP11

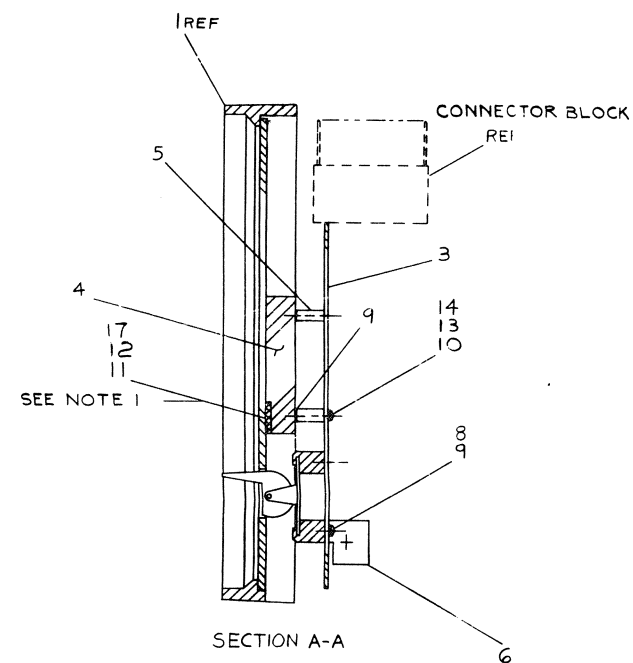
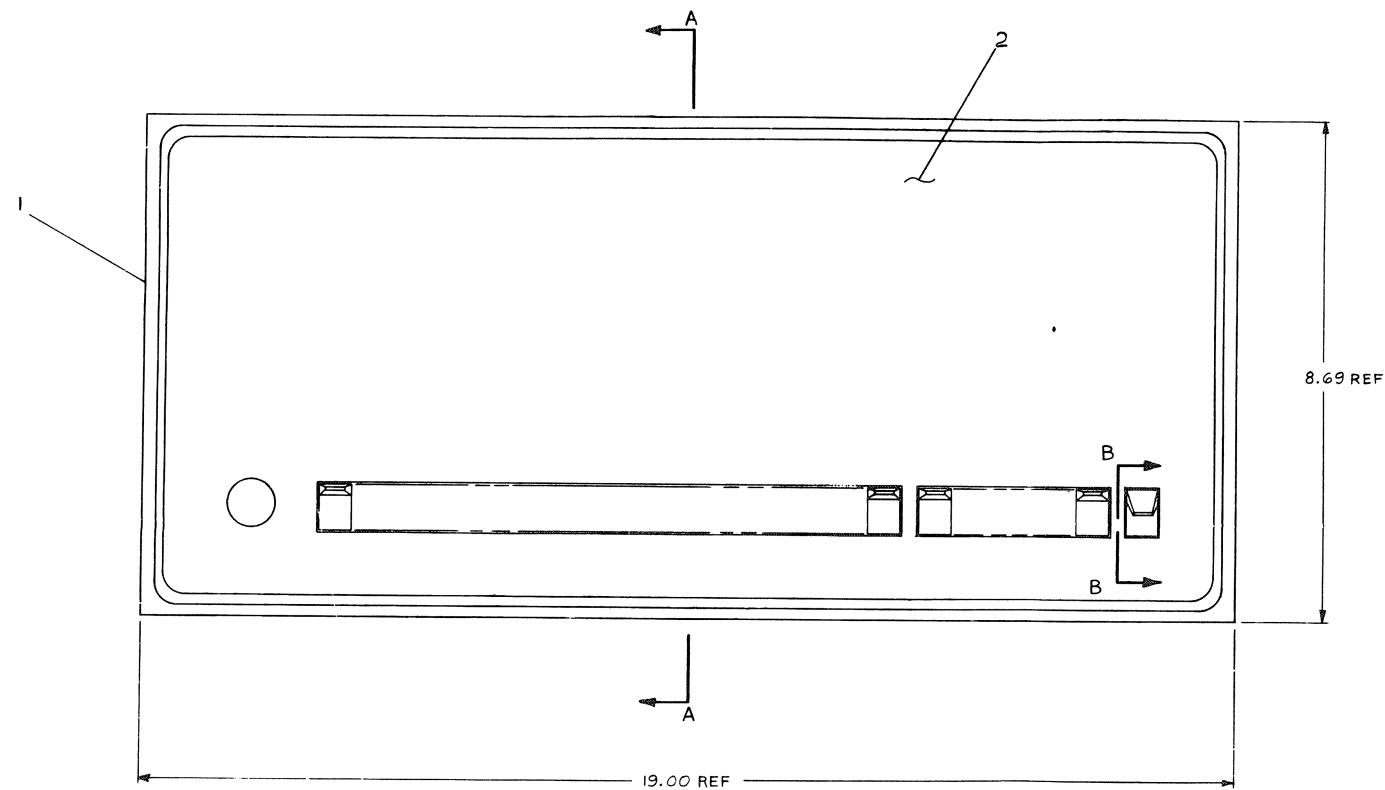
DO NOT SCALE DRAWING
UNLESS OTHERWISE SPECIFIED
DIMENSION IN INCHES
TOLERANCES
DECIMALS FRACTIONS ANGLES
± .005 ± 1/64 ± 0°30'
FINAL SURFACE QUALITY
REMOVE BURRS AND BREAK SHARP CORNERS
MATERIAL
FINISH

QTY.	DESCRIPTION	PART NO.	ITEM NO.
PARTS LIST			
digital EQUIPMENT CORPORATION MAYNARD, MASSACHUSETTS			
TITLE CABINET ASSY (PDP11)			
NEXT HIGHER ASSY D-UA-PDP11-20-0			
SCALE NONE			
SHEET 1 OF 1			
SIZE CODE DUA H960-CA-0			
NUMBER 1			
REV A			

REVISIONS	CHANGE NO.	REV.
1	H960CA - 00001	A
D. NEVADA		
P. 11/10		

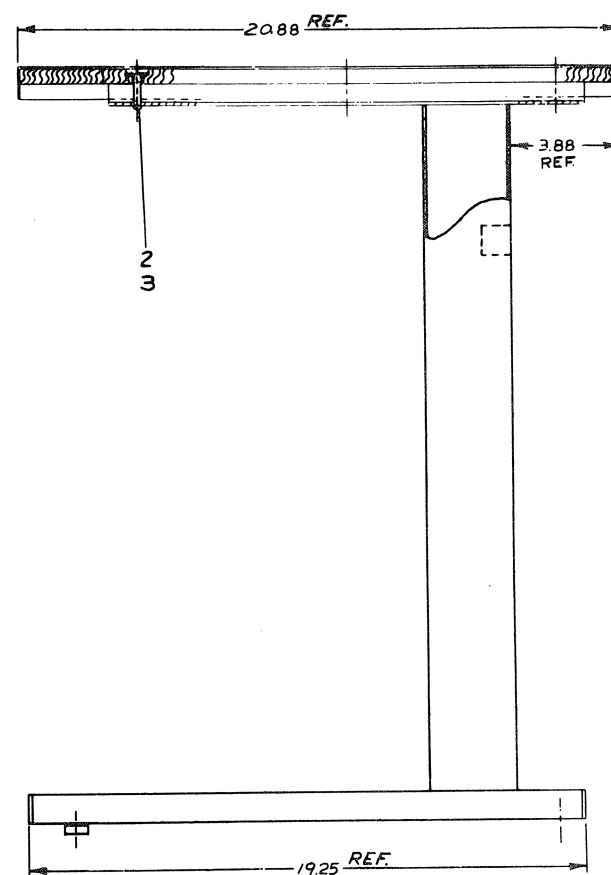
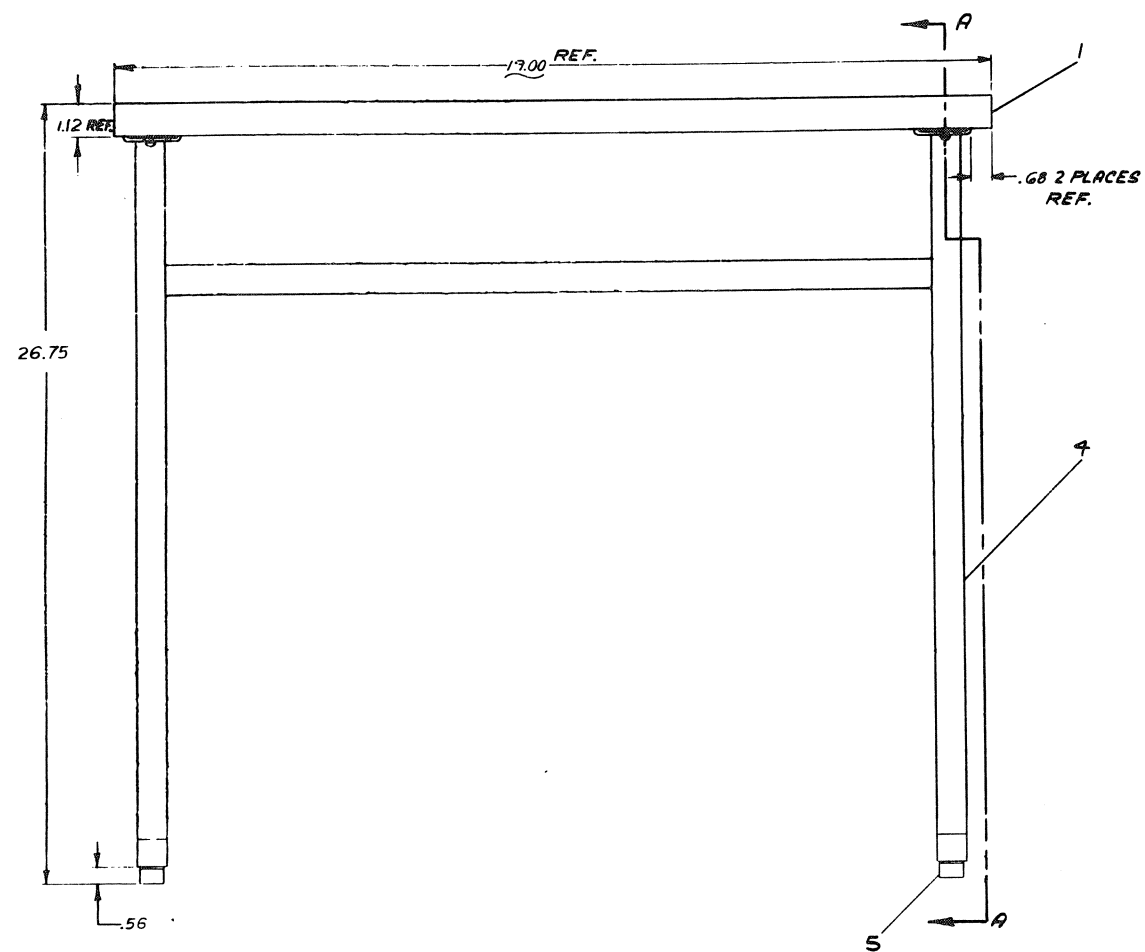


NOTES:
1. VELCRO TO BE CUT TO FIT SLOT ON PLEXIGLASS SUPPORT (ITEM #4). ATTACH PILE TAPE TO ITEM 4, AND HOOK TAPE TO ITEM 2.



REV	DATE	DESCRIPTION
A	12-27-74	INITIAL
B	12-27-74	INITIAL
C	12-27-74	INITIAL
D	12-27-74	INITIAL
E	12-27-74	INITIAL
F	12-27-74	INITIAL
G	12-27-74	INITIAL
H	12-27-74	INITIAL
I	12-27-74	INITIAL
J	12-27-74	INITIAL

TOLERANCES		FIRST USED SHORT OR CODE		QTY		DESCRIPTION		PART NO		ITEM NO	
UNLESS OTHERWISE SPECIFIED		DUAL		DATE		DATE		DATE		DATE	
DECIMALS		DUAL		DATE		DATE		DATE		DATE	
XXX = 0.001		DUAL		DATE		DATE		DATE		DATE	
XX = 0.01		DUAL		DATE		DATE		DATE		DATE	
X = 0.1		DUAL		DATE		DATE		DATE		DATE	
MATERIAL		DUAL		DATE		DATE		DATE		DATE	
FINISH		DUAL		DATE		DATE		DATE		DATE	
SCALE		DUAL		DATE		DATE		DATE		DATE	
SHEET		DUAL		DATE		DATE		DATE		DATE	
OF		DUAL		DATE		DATE		DATE		DATE	
DST		DUAL		DATE		DATE		DATE		DATE	
1		DUAL		DATE		DATE		DATE		DATE	



TOLERANCES
DECIMALS
XXX = ±.005
XX = ±.02
X = ±.1

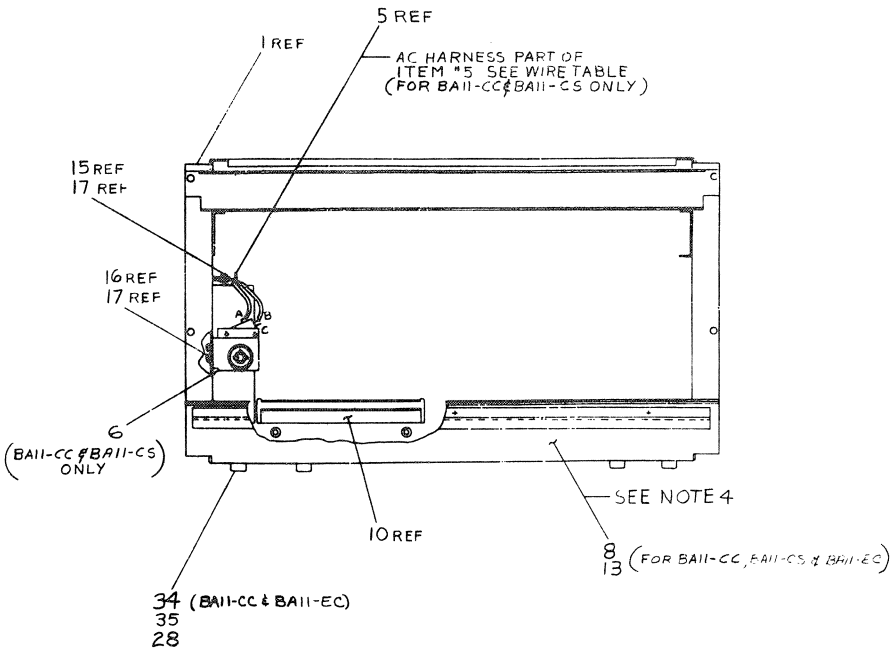
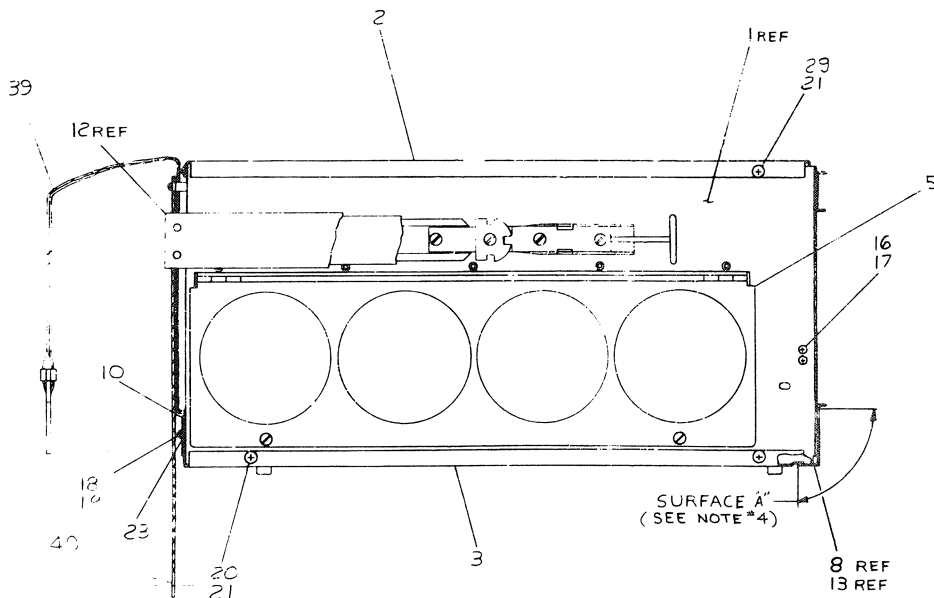
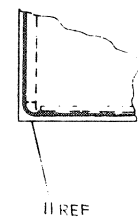
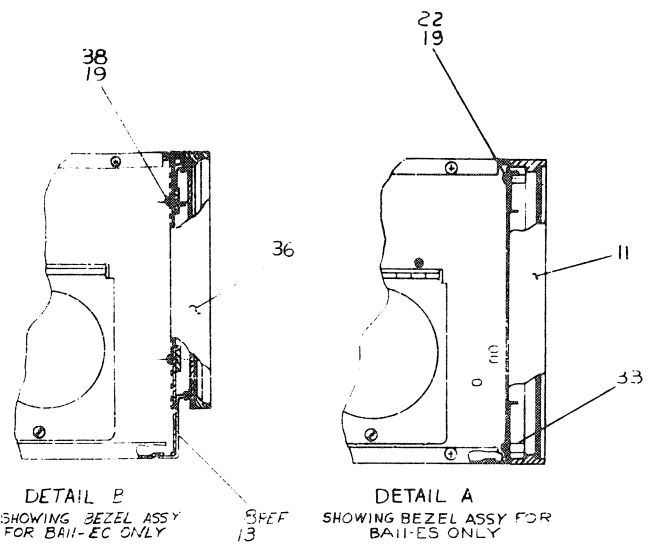
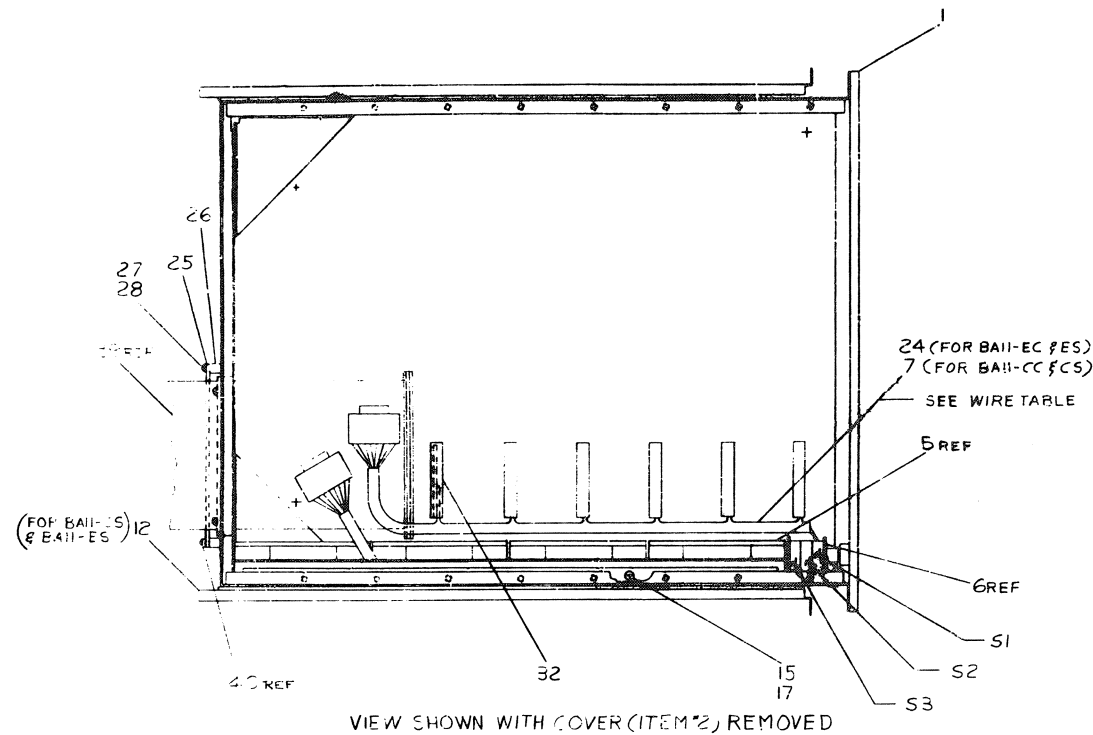
FIRST USED ON OPTION/ MODEL:	QTY.	DESCRIPTION	PART NO.	REV.
PDPII				
UNLESS OTHERWISE SPECIFIED				
DIMENSIONS IN INCHES				
TOLERANCES				
FINISH SURFACE QUALITY				
ASSEMBLY QUALITY				
PART NUMBER ASSY.				
D-UA-PDPII-20-0				
SCALE 1/2"				
SHEET 1 OF 1				
EQUIPMENT CORPORATION				
TABLE ASSY.				
EUA H952 HA-0				

EUA H952 HA-0

WIRE TABLE					
ITEM NO.	DESCRIPTION	FROM	TO	REMARKS	
1	RED	1	51-B		
2	WHITE	2	51-A		
3	WHITE	3	52-A		
4	WHITE	4	52-B		
5	BLUE	5	53-B		
6	BLUE	6	53-A		
7	BLUE	7	53-A		
8	BLUE	8	53-A		
9	BLUE	9	53-A		
10	BLUE	10	53-A		
11	BLUE	11	53-A		
12	BLUE	12	53-A		
13	BLUE	13	53-A		
14	BLUE	14	53-A		
15	BLUE	15	53-A		
16	BLUE	16	53-A		
17	BLUE	17	53-A		
18	BLUE	18	53-A		
19	BLUE	19	53-A		
20	BLUE	20	53-A		
21	BLUE	21	53-A		
22	BLUE	22	53-A		
23	BLUE	23	53-A		
24	BLUE	24	53-A		
25	BLUE	25	53-A		
26	BLUE	26	53-A		
27	BLUE	27	53-A		
28	BLUE	28	53-A		
29	BLUE	29	53-A		
30	BLUE	30	53-A		
31	BLUE	31	53-A		
32	BLUE	32	53-A		
33	BLUE	33	53-A		
34	BLUE	34	53-A		
35	BLUE	35	53-A		
36	BLUE	36	53-A		
37	BLUE	37	53-A		
38	BLUE	38	53-A		
39	BLUE	39	53-A		
40	BLUE	40	53-A		
41	BLUE	41	53-A		
42	BLUE	42	53-A		
43	BLUE	43	53-A		
44	BLUE	44	53-A		
45	BLUE	45	53-A		
46	BLUE	46	53-A		
47	BLUE	47	53-A		
48	BLUE	48	53-A		
49	BLUE	49	53-A		
50	BLUE	50	53-A		

NUMBER	VARIATION
BAIL-CC	TABLE MODEL (BASIC)
BAIL-ES	TABLE MODEL (BASIC)
BAIL-EC	TABLE MODEL (EXPANDER)
BAIL-ES	CABINET MODEL (EXPANDER)

NOTES:
 1. FOR DWG INDEX LIST SEE D-UI-BAIL-0-1.
 2. FOR BASIC CONFIGURATION DWG SHOWING BAIL INSTALLED IN CAB REFER TO DWG D-UA-11/20-0-0 & D-UA-11/10-0-0.
 3. FOR BREAKDOWN OF VARIATIONS SEE DWG AND PARTS LIST.
 4. COVER SURFACE "A" AS INDICATED WITH ITEM "9" (COVER STRIP) ENTIRE WIDTH, USING ITEM "13" FOR BAIL-CC, CS & EC.
 5. APPLY TAPE ITEM "30" TO SMOOTH SIDE OF INLAY (ITEM "9") AROUND EDGES AS SHOWN, THEN PLACE INLAY INTO BEZEL WITH TAPE SIDE DOWN. PRESS DOWN AROUND EDGES TO INSURE GOOD BOND.
 6. FOR SUPER COVER (ITEM "4") INSTALLATION REFER TO DWG D-AD-7004524-0-0.



REV	DESCRIPTION	DATE	BY	CHKD	APP'D
1	REVISED TO SHOW CHANGES TO BAIL-CC & BAIL-ES	11/20/68	W. J. B.	W. J. B.	W. J. B.
2	REVISED TO SHOW CHANGES TO BAIL-CC & BAIL-ES	11/20/68	W. J. B.	W. J. B.	W. J. B.
3	REVISED TO SHOW CHANGES TO BAIL-CC & BAIL-ES	11/20/68	W. J. B.	W. J. B.	W. J. B.
4	REVISED TO SHOW CHANGES TO BAIL-CC & BAIL-ES	11/20/68	W. J. B.	W. J. B.	W. J. B.
5	REVISED TO SHOW CHANGES TO BAIL-CC & BAIL-ES	11/20/68	W. J. B.	W. J. B.	W. J. B.
6	REVISED TO SHOW CHANGES TO BAIL-CC & BAIL-ES	11/20/68	W. J. B.	W. J. B.	W. J. B.
7	REVISED TO SHOW CHANGES TO BAIL-CC & BAIL-ES	11/20/68	W. J. B.	W. J. B.	W. J. B.
8	REVISED TO SHOW CHANGES TO BAIL-CC & BAIL-ES	11/20/68	W. J. B.	W. J. B.	W. J. B.
9	REVISED TO SHOW CHANGES TO BAIL-CC & BAIL-ES	11/20/68	W. J. B.	W. J. B.	W. J. B.
10	REVISED TO SHOW CHANGES TO BAIL-CC & BAIL-ES	11/20/68	W. J. B.	W. J. B.	W. J. B.