

DEC-11-HR5B-D

H720
power supply and
mounting box
engineering drawings

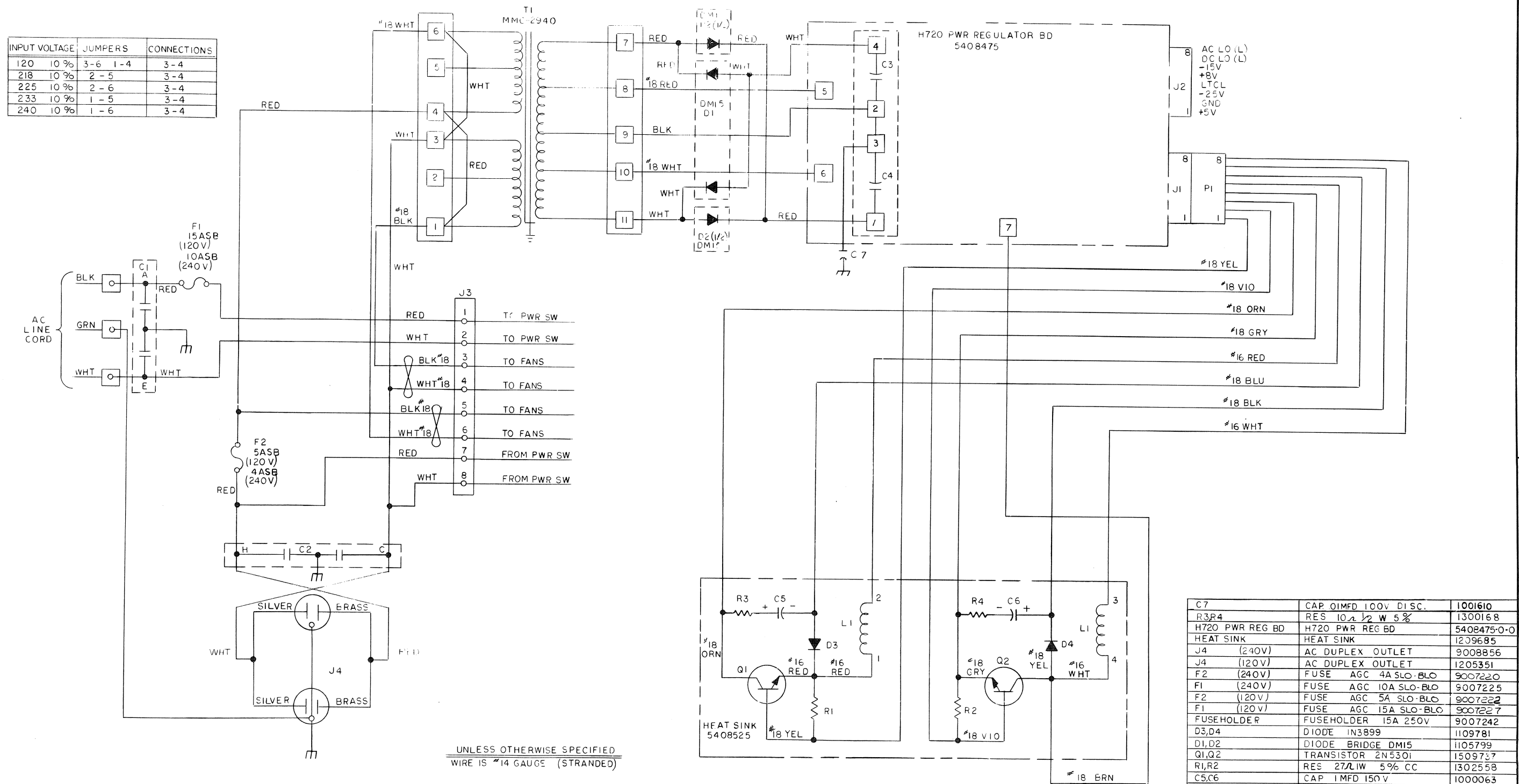
ENGINEERING DRAWINGS

Drawing No.	Title
D-CS-H720-0-1	Power Supply H720
D-CS-5408475-0-1	H720 Power Req. Board 5408475
D-UA-H720-E-0-0	Power Supply H720-E, Assembly Drawing
D-UA-H720-F-0-0	Power Supply H720-F, Assembly Drawing
D-CS-H720-E-0-0	Power Supply H720-E, Circuit Schematic
D-CS-H720-F-0-0	Power Supply H720-F, Circuit Schematic
A-PL-H720-E-0-0	Power Supply H720-E, Parts List
A-PL-H720-F-0-0	Power Supply H720-F, Parts List
D-CS-5409267-0-1	H720 Power Regulator Board 5409267, Schematic
E-IA-5409267-0-1	H720 Power Regulator Board 5409267, Assembly
A-PL-5409267-0-1	H720 Power Regulator Board 5409267, Parts List
D-UA-11/20-0-0	Basic Assembly/Configuration (PDP-11) (2 sheets)
D-UA-H960-CA-0	Cabinet Assembly (PDP-11)
D-UA-KY11-A-0	Console Assembly KY11-A
E-UA-H952-HA-0	Table Assembly
E-UA-BA11-0-0	Chassis Assembly (BA11)

THIS SCHEMATIC IS FURNISHED ONLY FOR TEST AND MAINTENANCE PURPOSES. THE CIRCUITS ARE PROPRIETARY IN NATURE AND SHOULD BE TREATED ACCORDINGLY. COPYRIGHT 1969 BY DIGITAL EQUIPMENT CORPORATION.

1-7-022H SC 0

INPUT VOLTAGE	JUMPERS	CONNECTIONS
120 10%	3-6 1-4	3-4
218 10%	2-5	3-4
225 10%	2-6	3-4
233 10%	1-5	3-4
240 10%	1-6	3-4



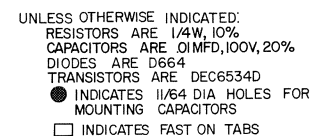
UNLESS OTHERWISE SPECIFIED
WIRE IS #14 GAUGE (STRANDED)

CIRCUIT SHOWN WIRED FOR 120V.
FOR DIFFERENT VOLTAGE REFER TO JUMPER TABLE.

REF DESIGNATION	DESCRIPTION	PART NO
C7	CAP 0.1MFD 100V DISC.	1001610
R3,R4	RES 10 Ω 1/2 W 5%	1300168
H720 PWR REG BD	H720 PWR REG BD	5408475-0-0
HEAT SINK	HEAT SINK	1209685
J4 (240V)	AC DUPLEX OUTLET	9008856
J4 (120V)	AC DUPLEX OUTLET	1205351
F2 (240V)	FUSE AGC 4A SLO-BLO	9007220
F1 (240V)	FUSE AGC 10A SLO-BLO	9007225
F2 (120V)	FUSE AGC 5A SLO-BLO	9007222
F1 (120V)	FUSE AGC 15A SLO-BLO	9007227
FUSEHOLDER	FUSEHOLDER 15A 250V	9007242
D3,D4	DIODE 1N3899	1109781
D1,D2	DIODE BRIDGE DM15	1105799
Q1,Q2	TRANSISTOR 2N5301	1509737
R1,R2	RES 27 Ω 1W 5% CC	1302558
C5,C6	CAP 1MFD 150V	1000063
C3,C4	CAP. 22000 MFD 50V	1009189
C1,C2	CAP 2X.1MFD 1000V	1002153
P1	CONNECTOR 1-480460-0	1209340-01
J1,J2,J3	RECEPTACLE 1-480459-0	1209340-00
L1	TRANSFORMER COIL	1609762
T1	TRANSFORMER MMC 2940	1609810

PARTS LIST

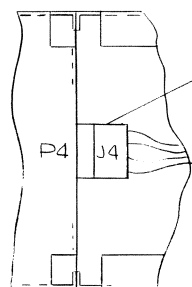
digital POWER SUPPLY H720
EQUIPMENT CORPORATION
MAYNARD, MASSACHUSETTS
PRINTED CIRCUIT REV.



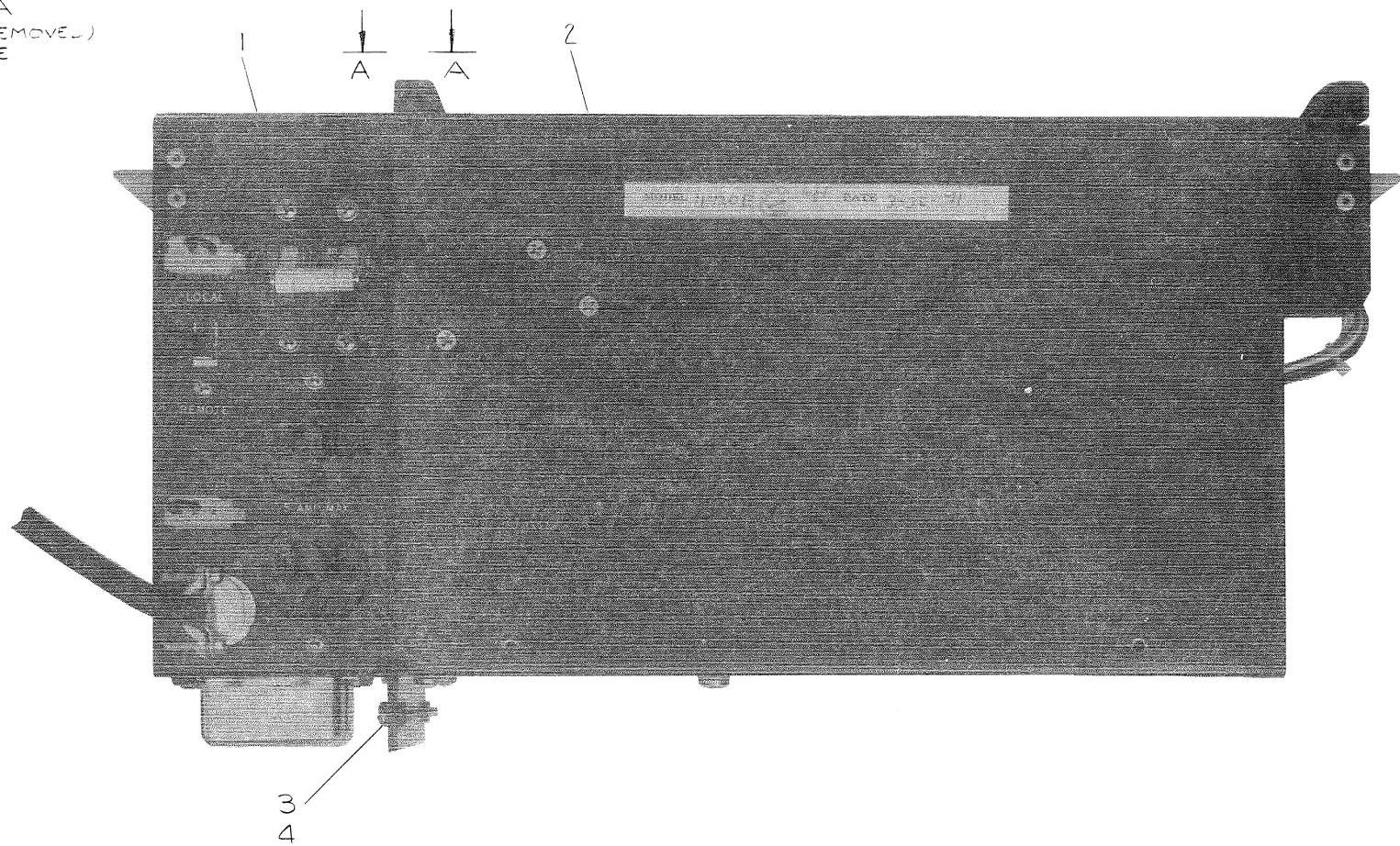
TRANSISTOR & DIODE		CONVERSION		CHART			
DEC		EIA		DEC		EIA	
2N1305	SAME						
MP56531	SAME						
2N4441	SAME						
D672	1N3653						
DEC3715	2N3715						
2N2904	SAME			D003			IN994
D662	1N645			IN752A			SAME
D664	1N646			DEC6534D			MP58534
1N4001	SAME			DEC5790-S			2N3790
1N746A	SAME			DEC3009S-S			2N3009
1N751A ²	SAME			DEC1008-S			2N1008

<div style="border: 1px solid black; padding: 5px; text-align: center;"> digital </div> <div style="border: 1px solid black; padding: 5px;"> EQUIPMENT CORPORATION <small>MAYNARD, MASSACHUSETTS</small> </div>	TITLE		H720 PWR REG. BOARD 5408475	
	SIZE	CODE	NUMBER	REV
	CS	5408475-0-1		H
PRINTED CIRCUIT REV.				

This drawing and specifications, herein, are the property of Digital Equipment Corporation and shall not be reproduced or copied or used in whole or in part as the basis for the manufacture or sale of items without written permission.



VIEW A-A
(WITH COVER REMOVED)
SCALE: NONE



NOTES:

1. CONNECTORS MARKED J4 & P4 ARE TO BE CONNECTED BEFORE ASSEMBLING ITEM #1 TO ITEM #2.
2. FOR DWG INDEX LIST REFER TO DWG D-DI-H720-E-2.

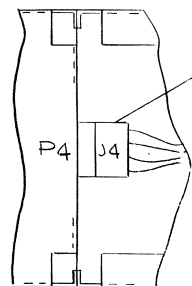
REV	CHANGE NO.	CHK

FIRST USED ON OPTION/MODEL
PDP 11

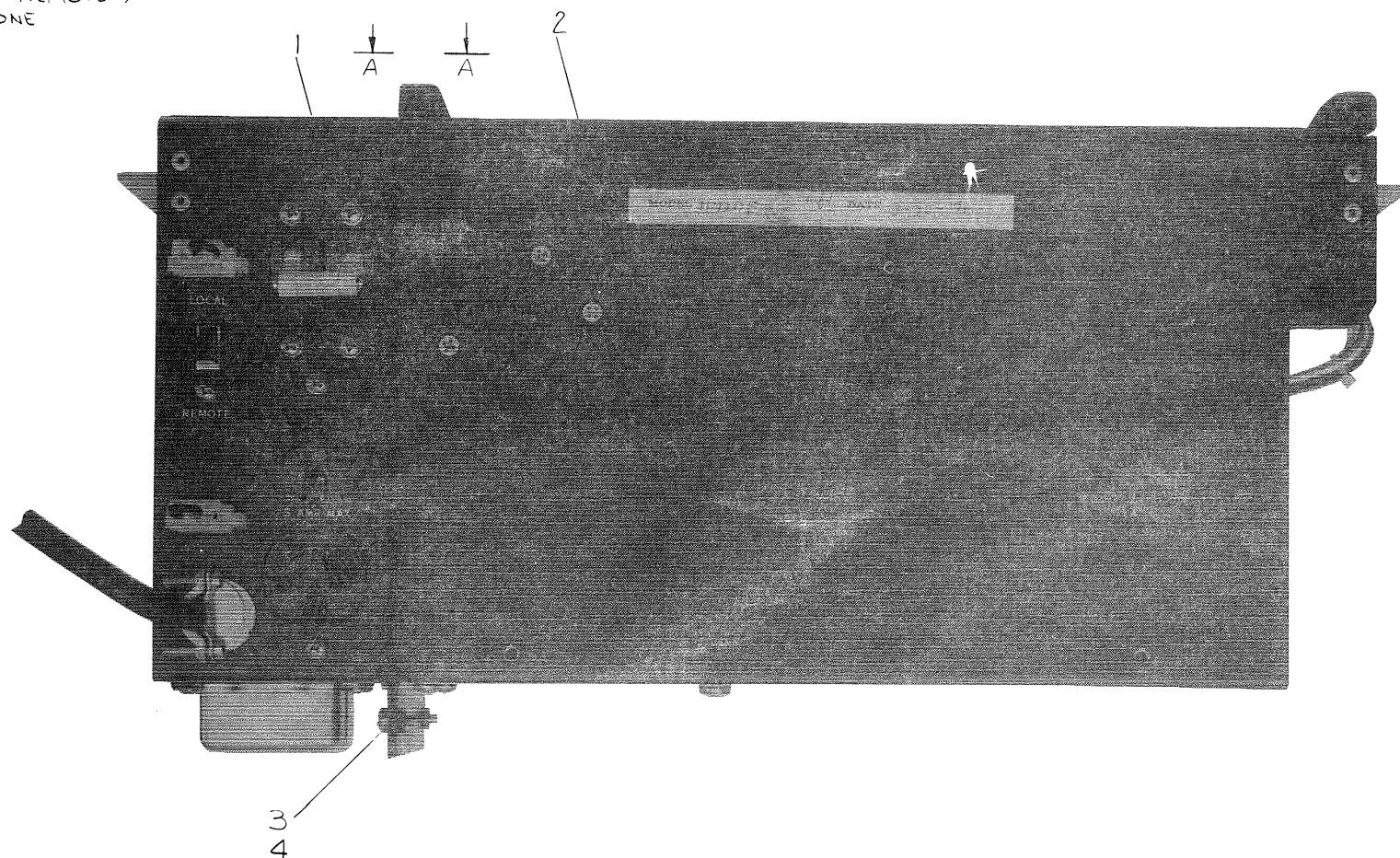
DO NOT SCALE DRAWING			
UNLESS OTHERWISE SPECIFIED			
DIMENSION IN INCHES			
TOLERANCES			
DECIMALS	FRACTIONS	ANGLES	
± .005	± 1/64	± 0°30'	
FINAL SURFACE QUALITY			
REMOVE BURRS AND BREAK SHARP CORNERS			
MATERIAL			
FINISH			

QTY.	DESCRIPTION		PART NO.	ITEM NO.
PARTS LIST				
DRN.	<i>W. Gaudin</i>	DATE 11/28/74	digital EQUIPMENT CORPORATION MAYNARD, MASSACHUSETTS	
CHKD.	<i>W. Gaudin</i>	DATE 12/20/74		
ENG.	<i>W. Gaudin</i>	DATE 5/15/77	TITLE POWER SUPPLY H720-E	
PROJ. ENG.	<i>W. Gaudin</i>	DATE 3/25/77		
PROD.	<i>W. Gaudin</i>	DATE 5/26/77	SIZE/CODE DUAH720-E-0	
NEXT HIGHER ASSY A-ML-H720-E				
SCALE			REV.	
SHEET 1 OF 1			DIST. 12	

This drawing and specifications, herein, are the property of Digital Equipment Corporation and shall not be reproduced or copied or used in whole or in part as the basis for the manufacture or sale of items without written permission.



VIEW A-A
(WITH COVER REMOVED)
SCALE: NONE



NOTES:

- CONNECTORS MARKED J4 & P4 ARE TO BE CONNECTED BEFORE ASSEMBLING ITEM #1 TO ITEM #2.
- FOR DWG INDEX LIST REFER TO DWG # D-DI-H720-F-2.

REV.	CHANGE NO.

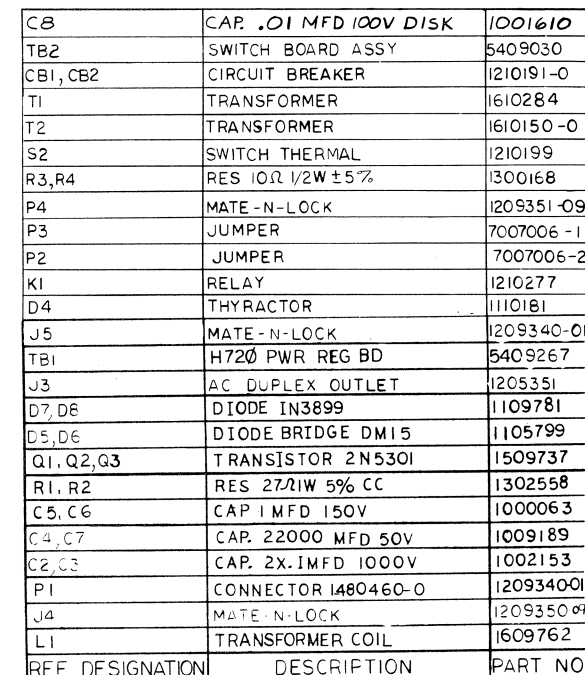
DEC FORM NO. 100

FIRST USED ON OPTION / MODEL
PDP 11

DO NOT SCALE DRAWING
UNLESS OTHERWISE SPECIFIED DIMENSION IN INCHES
TOLERANCES
DECIMALS FRACTIONS ANGLES
± .005 ± 1/64 ± 0°30'
FINAL SURFACE QUALITY
REMOVE BURRS AND BREAK SHARP CORNERS
MATERIAL
FINISH

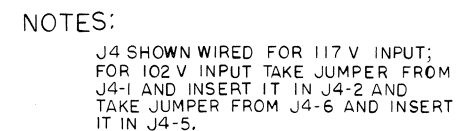
QTY.	DESCRIPTION	PART NO.	ITEM NO.
PARTS LIST			
DRN.	DATE	digital EQUIPMENT CORPORATION MAYNARD, MASSACHUSETTS	
CHK'D.	DATE		
ENG.	DATE	TITLE POWER SUPPLY H720-F	
PROJ. ENG.	DATE		
PROD.	DATE	SIZE/CODE NUMBER REV. DUAH720-F-0	
NEXT HIGHER ASSY A-ML-H720-F	SCALE		
SHEET 1 OF 1	DIST.		

REV	NUMBER	CS	D
	H720-E-1	CS	SIZE



REF DESIGNATION	DESCRIPTION	PART NO
-----------------	-------------	---------

DRN K L RYSIAK	DATE 1-20-77	TRANSISTOR & DIODE CONVERSION CHART				TITLE POWER SUPPLY H72Ø-E			
CHK'D J C	DATE 2-20-77	DEC	EIA	DEC	EIA	<div>digital</div> <div>EQUIPMENT CORPORATION</div> <div>MAYNARD, MASSACHUSETTS</div>			
ENG. J C	DATE 2-20-77	2N5301	SAME						
PROD. J C	DATE 2-20-77	IN5899	SAME						
						SIZE D	CODE CS	NUMBER H72Ø-E-1	REV. <div></div>
						PRINTED CIRCUIT REV. <div></div>			



REVISIONS		
CHK	CHG NO.	REV.
	1	1
	2	2

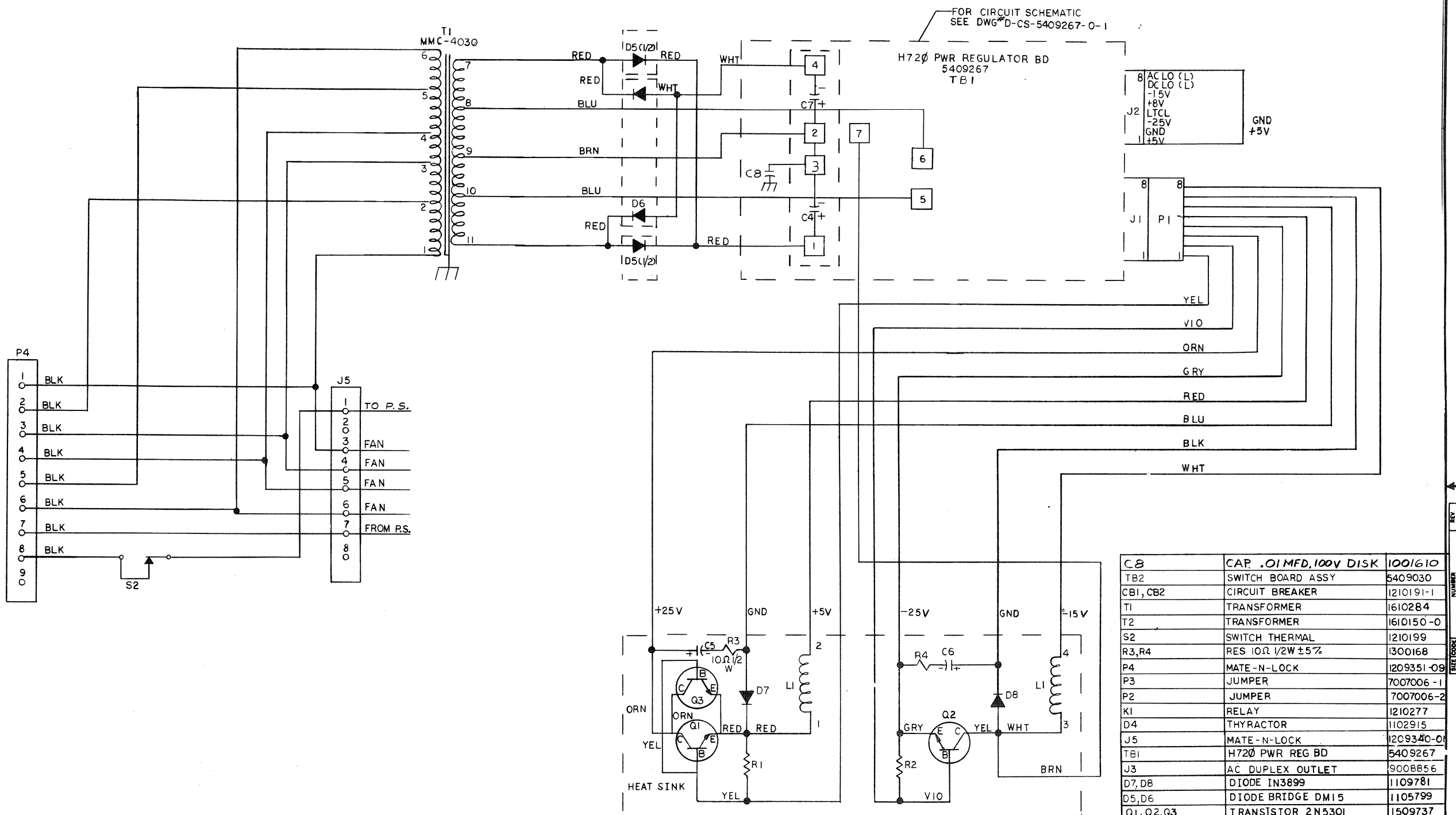
DRN.	DATE
KAY:1AK	10-13-71
CHK'D	DATE
<i>[Signature]</i>	5-20-71
ENG.	DATE
	1-2-71
PROD.	DATE
<i>[Signature]</i>	7/26/71

[illegible]

digital
EQUIPMENT
CORPORATION
MAYNARD, MASSACHUSETTS

TITLE		POWER SUPPLY H720-E	
SIZE D	CODE CS	NUMBER H720-E-1	
PRINTED CIRCUIT REV.			

THIS SCHEMATIC IS FURNISHED ONLY FOR TEST AND MAINTENANCE PURPOSES. THE
CIRCUITS ARE PROPRIETARY IN NATURE AND SHOULD BE TREATED ACCORDINGLY.
COPYRIGHT 1977 BY DIGITAL EQUIPMENT CORPORATION



REF	DESIGNATION	DESCRIPTION	PART NO
C8		CAP .01MFD, 100V DISK	1001610
TB2		SWITCH BOARD ASSY	5409030
CBI, CB2		CIRCUIT BREAKER	1210191-I
T1		TRANSFORMER	1610284
T2		TRANSFORMER	1610150-0
S2		SWITCH THERMAL	1210199
R3, R4		RES 10 Ω 1/2W \pm 5%	1300168
P4		MATE - N - LOCK	1209351-09
P3		JUMPER	7007006-1
P2		JUMPER	7007006-2
K1		RELAY	1210277
D4		THYRACITOR	1102915
J5		MATE - N - LOCK	1209340-01
TBI		H720 PWR REG BD	5409267
J3		AC DUPLEX OUTLET	9008856
D7, D8		DIODE IN3899	1109781
D5, D6		DIODE BRIDGE DM15	1105799
Q1, Q2, Q3		TRANSISTOR 2N5301	1509737
R1, R2		RES 27 Ω 1W 5% CC	1302558
C5, C6		CAP 1MFD 150V	1000063
C4, C7		CAP. 22000 MFD 50V	1009189
C2, C3		CAP. 2x.1MFD 1000V	1002153
PI		CONNECTOR 1480460-0	120934001
J4		MATE - N - LOCK	1209350-09
L1		TRANSFORMER COIL	1609762

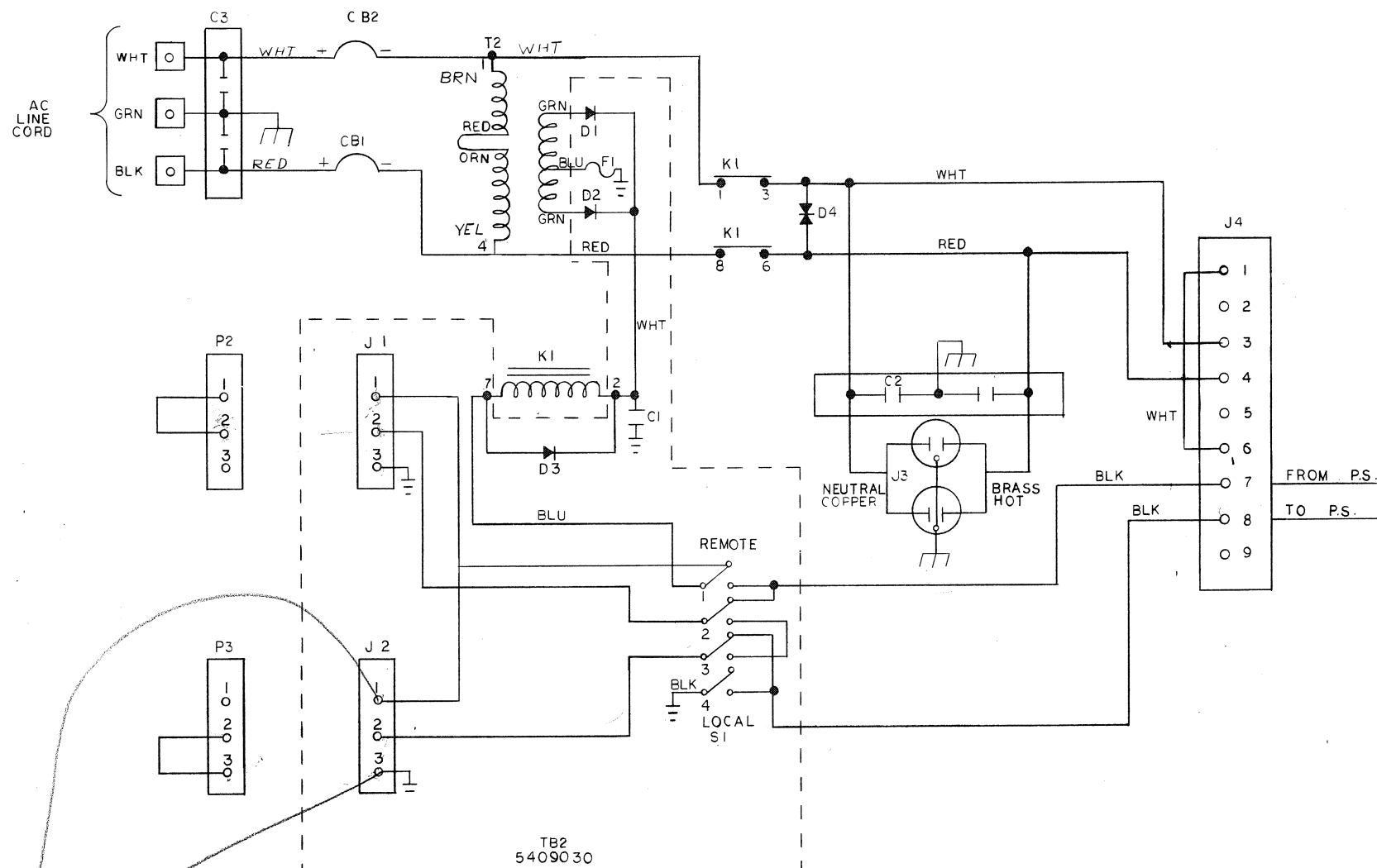
SHEET 1 OF 2

REF	DESIGNATION	DESCRIPTION	PART NO
-----	-------------	-------------	---------

DRN. K. ERSIAK	DATE 10-13-76	TRANSISTOR & DIODE CONVERSION CHART				TITLE POWER SUPPLY H720-F				
CHWD	DATE	DEC	EIA	DEC	EIA	digital	SIZE D	CODE CS	NUMBER H720-F-1	REV.
	DATE	2N5301	SAME							
EXG.	DATE	1N3899	SAME							
PROD. all	DATE 5/16/77					EQUIPMENT CORPORATION				
						MAYNARD, MASSACHUSETTS				
						PRINTED CIRCUIT REV.				

THIS SCHEMATIC IS FURNISHED ONLY FOR TEST AND MAINTENANCE PURPOSES. THE CIRCUITS ARE PROPRIETARY IN NATURE AND SHOULD BE TREATED ACCORDINGLY. COPYRIGHT 1977 BY DIGITAL EQUIPMENT CORPORATION

SIZE CODE H720-F-1
D CS H720-F-1



Revised

NOTES:

J4 SHOWN WIRED FOR 235V INPUT;
FOR 220V INPUT TAKE JUMPER FROM
J4-1 AND INSERT IT IN J4-2 FOR
205V INPUT TAKE JUMPER FROM J4-1-
AND INSERT IT IN J4-2 AND TAKE
JUMPER FROM J4-6 AND INSERT IT IN
J4-5.

SHEET 2 OF 2

DRN	DATE	TRANSISTOR & DIODE CONVERSION CHART				TITLE	
CHK'D	DATE	DEC	EIA	DEC	EIA	digital POWER SUPPLY H720 F	
ENG.	DATE					SIZE CODE	NUMBER
PROD	DATE					D CS	H720-F-1
REVISIONS						PRINTED CIRCUIT REV.	
CHK	CHG	NO	REV				