

DEC-11-HMFA-D

MM11-F
core memory
engineering drawings

DIGITAL EQUIPMENT CORPORATION • MAYNARD, MASSACHUSETTS

MM11-F Core Memory

D-MU-MM11-F-02	1	Module Utilization
D-BS-MM11-F-03	2	Core Memory Stack
D-BS-MM11-F-04	4	Core Memory Sense & Inhibit
D-BS-MM11-F-05	1	Magnetics Logic Diagram
D-IC-MM11-F-06	1	I/O Connectors
K-WL-MM11-F-07 (complete)	—	Wire List
D-TD-MM11-F-08	1	Timing & Flow
D-CS-G102-0-1	1	Sense Inhibit Card, G102
D-CS-G103-0-1	1	Memory Levels and Gates, G103
B-CS-M1091-0-1	1	Device Select Module, M1091
C-CS-G225-0-1	1	X & Y Current Generator, G225
D-CS-G226-0-1	1	X-Y Decoder Switch, G226
C-CS-G616-0-1	1	Planar Stack Board, G616
D-CS-M7290-0-1	1	MM11-F Control Logic, M7290

Copyright © 1971 by Digital Equipment Corporation

The material in this manual is for information purposes and is subject to change without notice.

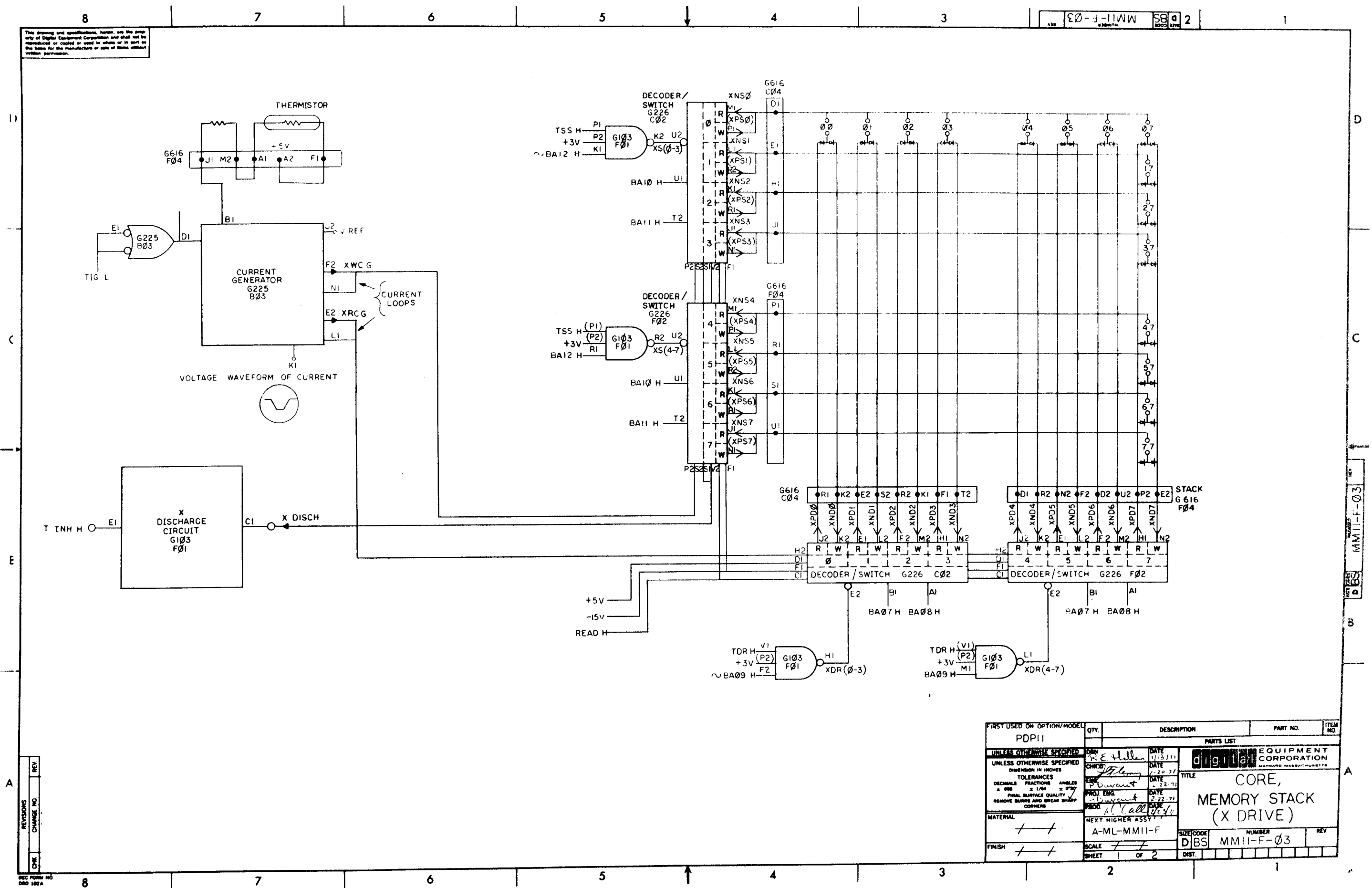
The following are trademarks of Digital Equipment Corporation, Maynard, Massachusetts:

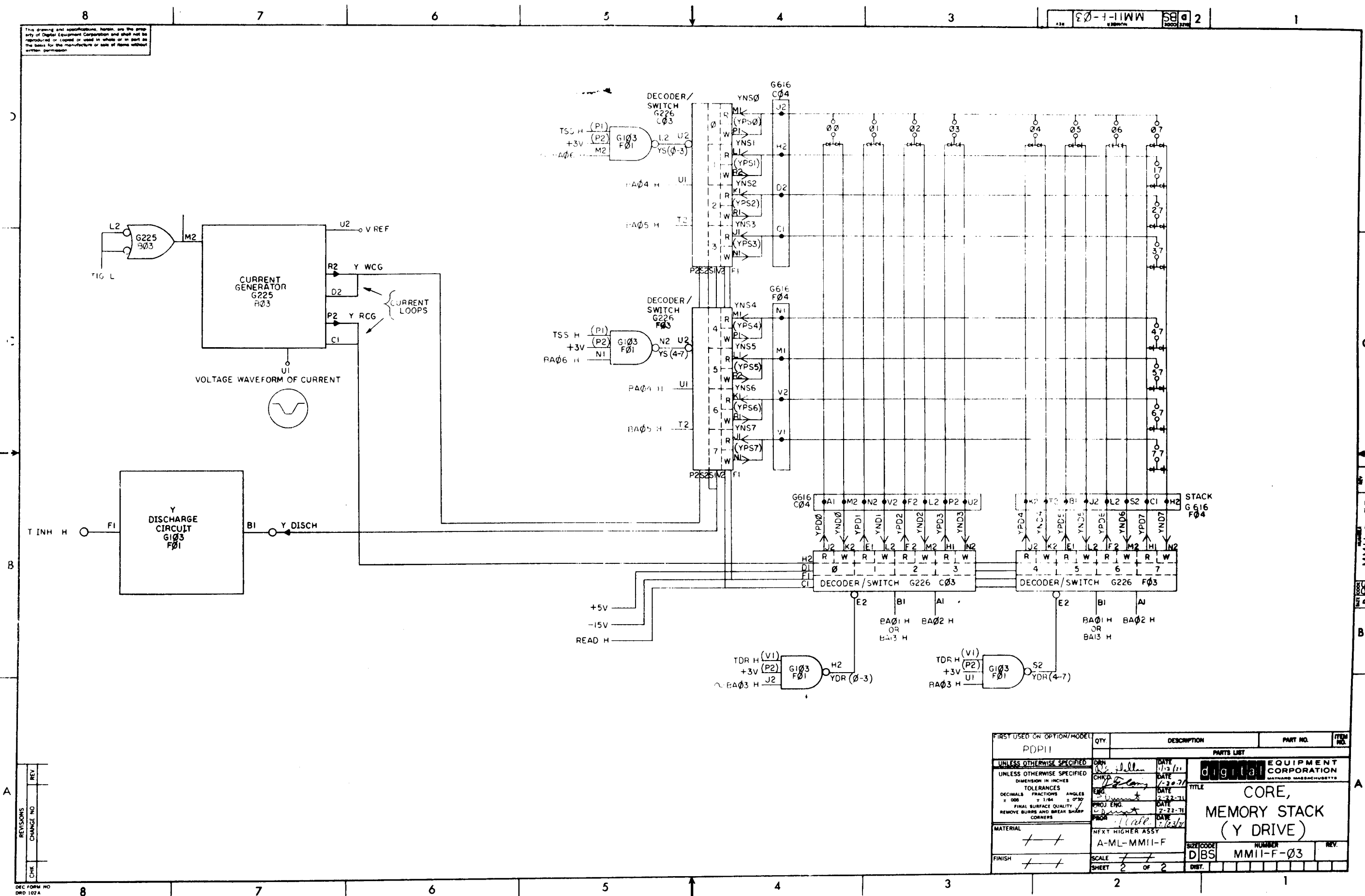
DEC	PDP
FLIP CHIP	FOCAL
DIGITAL	COMPUTER LAB
UNIBUS	

FIRST USED ON OPTION/MODEL	PDP11
----------------------------	-------

QTY.		DESCRIPTION	PART NO.	ITEM NO.
PARTS LIST				
REF #	DATE	DIGITAL EQUIPMENT CORPORATION MAYNARD, MASSACHUSETTS		
CNTR #	DATE	TITLE		
ENG #	DATE	MODULE UTILIZATION (MMII-F)		
PROD ENG	DATE			
PROD *	DATE			
PROD	DATE			
NEXT HIGHER ASSY				
A-ML-MMII-F				
SCALE	DMU	NUMBER	MMII-F-02	REV.
SHEET OF	CHG.			

- ☐ IF END OF BUS REPLACE ~~W92~~ WITH ~~W93~~.
- ☒ IF LAST UNIT IN BASIC BOX REPLACE ~~W92~~ WITH BC11A CABLE END WHEN EXPANDING TO PERIPHERAL BOX.
- ☒ IF FIRST UNIT IN EXPANDER BOX REPLACE ~~W92~~ WITH BC11A CABLE END.
- ☒ H207 USED IN MMII-F
- ☒ H208 USED IN MMII-FP
- ☒ G008 USED IN MMII FP ONLY

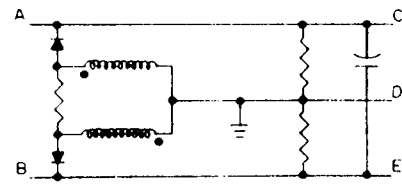




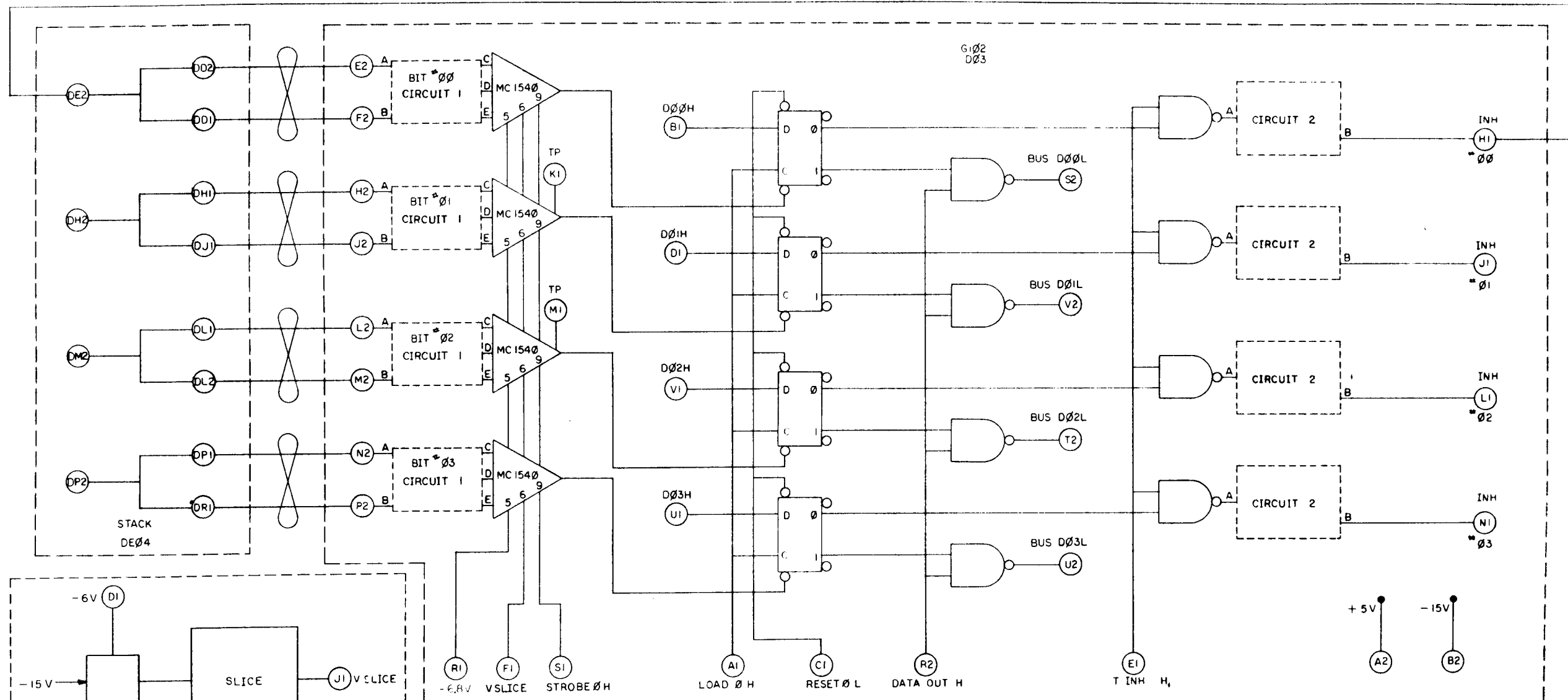
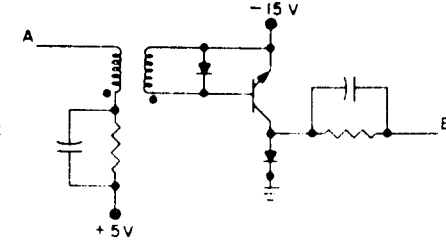
FIRST USED ON OPTION/MODEL		QTY.		DESCRIPTION		PART NO.		ITEM NO.	
PDP11									
UNLESS OTHERWISE SPECIFIED		DATE		PARTS LIST		EQUIPMENT CORPORATION			
UNLESS OTHERWISE SPECIFIED		1/2/71		digital		MAYNARD MASSACHUSETTS			
DIMENSION IN INCHES		CHECKED BY		DATE		TITLE			
TOLERANCES		J. Lang		1/2/71		CORE,			
DECIMALS FRACTIONS ANGLES		DATE		DATE		MEMORY STACK			
Z .000 Z .1/64 A2 .0750		2-7-71		2-22-71		(Y DRIVE)			
FINAL SURFACE QUALITY		PROJ. ENG.		DATE					
REMOVE BURRS AND BREAK SHARP CORNERS		W. D. ...		2-22-71					
		PROG.		DATE					
		1/2/71		2-22-71					
MATERIAL		NEXT HIGHER ASSY		SIZE CODE		NUMBER		REV.	
+ +		A-M-L-MM11-F		DBS		MM11-F-03			
FINISH		SCALE		SHEET					
+ +		2 OF 2		2					

This drawing and specifications, herein, are the property of Digital Equipment Corporation and shall not be reproduced or copied or used in whole or in part as the basis for the manufacture or sale of items without written permission.

CIRCUIT 1



CIRCUIT 2

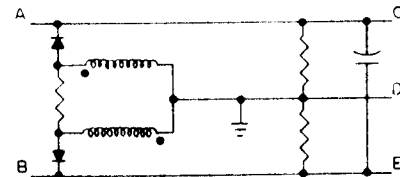


FIRST USED ON OPTION/MOD. PDP11		QTY.	DESCRIPTION	PART NO.	ITEM NO.
UNLESS OTHERWISE SPECIFIED DIMENSION IN INCHES TOLERANCES DECIMALS FRACTIONS ANGLES ± .005 ± 1/64 ± 0°30' FINAL SURFACE QUALITY REMOVE BURRS AND BREAK SHARP CORNERS		DATE 10-1-71 CHKD 10-1-71 ENG 10-1-71 PROL ENG 10-1-71 PROL 10-1-71	DATE 10-1-71 DATE 10-1-71 DATE 10-1-71 DATE 10-1-71 DATE 10-1-71	PARTS LIST digital EQUIPMENT CORPORATION MAYNARD, MASSACHUSETTS TITLE CORE MEMORY SENSE & INHIBIT SIZE CODE DBS NUMBER MM11-F-04 REV. 1	
MATERIAL + + +		NEXT HIGHER ASSY A-ML-MM11-F		SHEET 1 OF 4	
FINISH + + +		SCALE 1/8" = 1"		DST.	

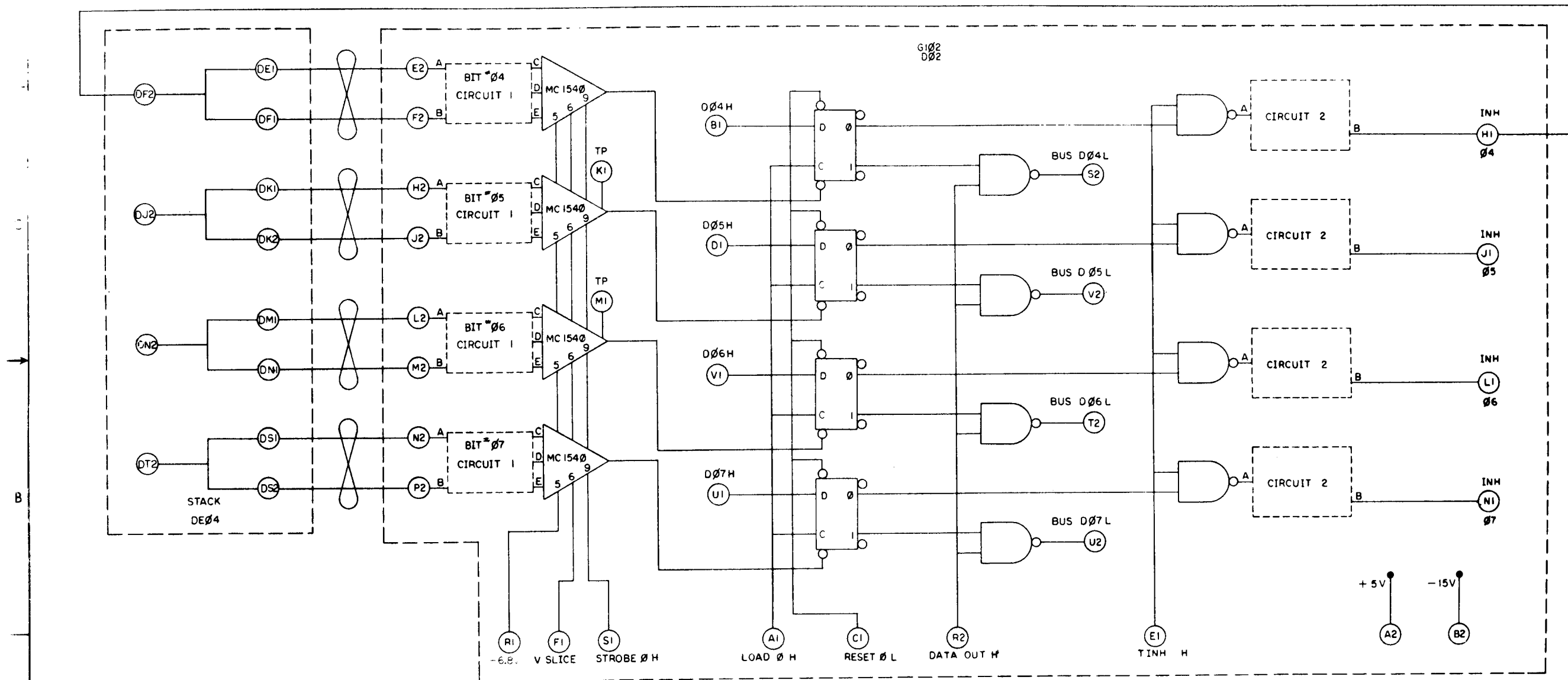
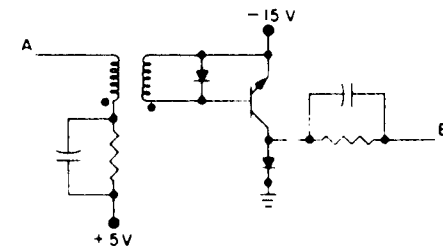
REVISIONS
CHANGE NO. REV.
1 10-1-71
2 10-1-71
3 10-1-71
4 10-1-71
5 10-1-71
6 10-1-71
7 10-1-71
8 10-1-71
9 10-1-71
10 10-1-71

This drawing and specifications herein are the property of Digital Equipment Corporation and shall not be reproduced or copied or used in whole or in part as the basis for the manufacture or sale of items without written permission.

CIRCUIT 1



CIRCUIT 2



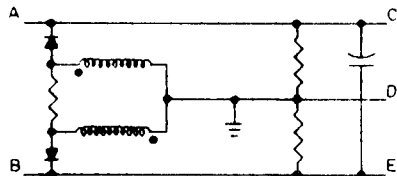
REV	NO	DATE
1	1	1/10/71
2	1	1/10/71
3	1	1/10/71
4	1	1/10/71
5	1	1/10/71
6	1	1/10/71
7	1	1/10/71
8	1	1/10/71

FORM NO. 102A

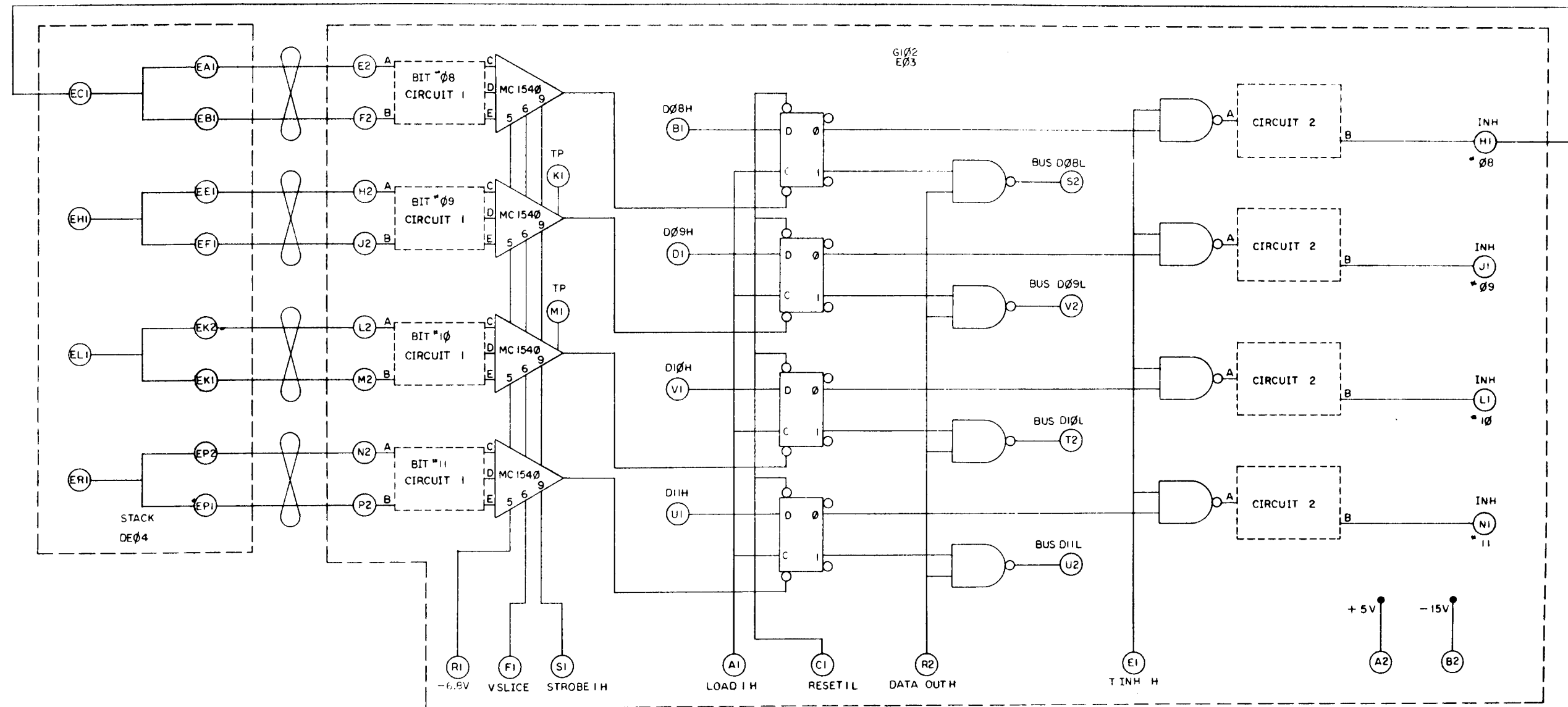
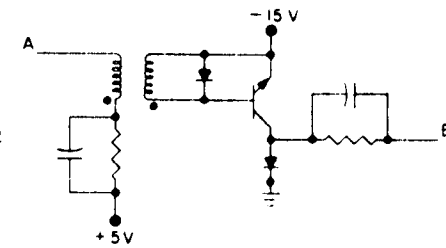
FIRST USED ON OPTION/MOD.		QTY.	DESCRIPTION	PART NO.	ITEM NO.
PDP11					
UNLESS OTHERWISE SPECIFIED		PARTS LIST			
UNLESS OTHERWISE SPECIFIED		digital EQUIPMENT CORPORATION			
DIMENSIONS IN INCHES		MAYNARD, MASSACHUSETTS			
TOLERANCES		TITLE:			
DECIMALS FRACTIONS ANGLES		CORE MEMORY			
± .005 ± .010 ± .020		SENSE & INHIBIT			
FINAL SURFACE QUALITY		SIZE CODE			
REMOVE BURRS AND BREAK SHARP CORNERS		DBS			
MATERIAL		NUMBER			
NEXT HIGHER ASSY		MM11-F-04			
A-ML-MM11-F		REV			
FINISH		SHEET			
2		OF 4			
SCALE		DIST.			
2		1			

This drawing and specifications, herein, are the property of Digital Equipment Corporation and shall not be reproduced or copied in whole or in part in any form without written permission.

CIRCUIT 1



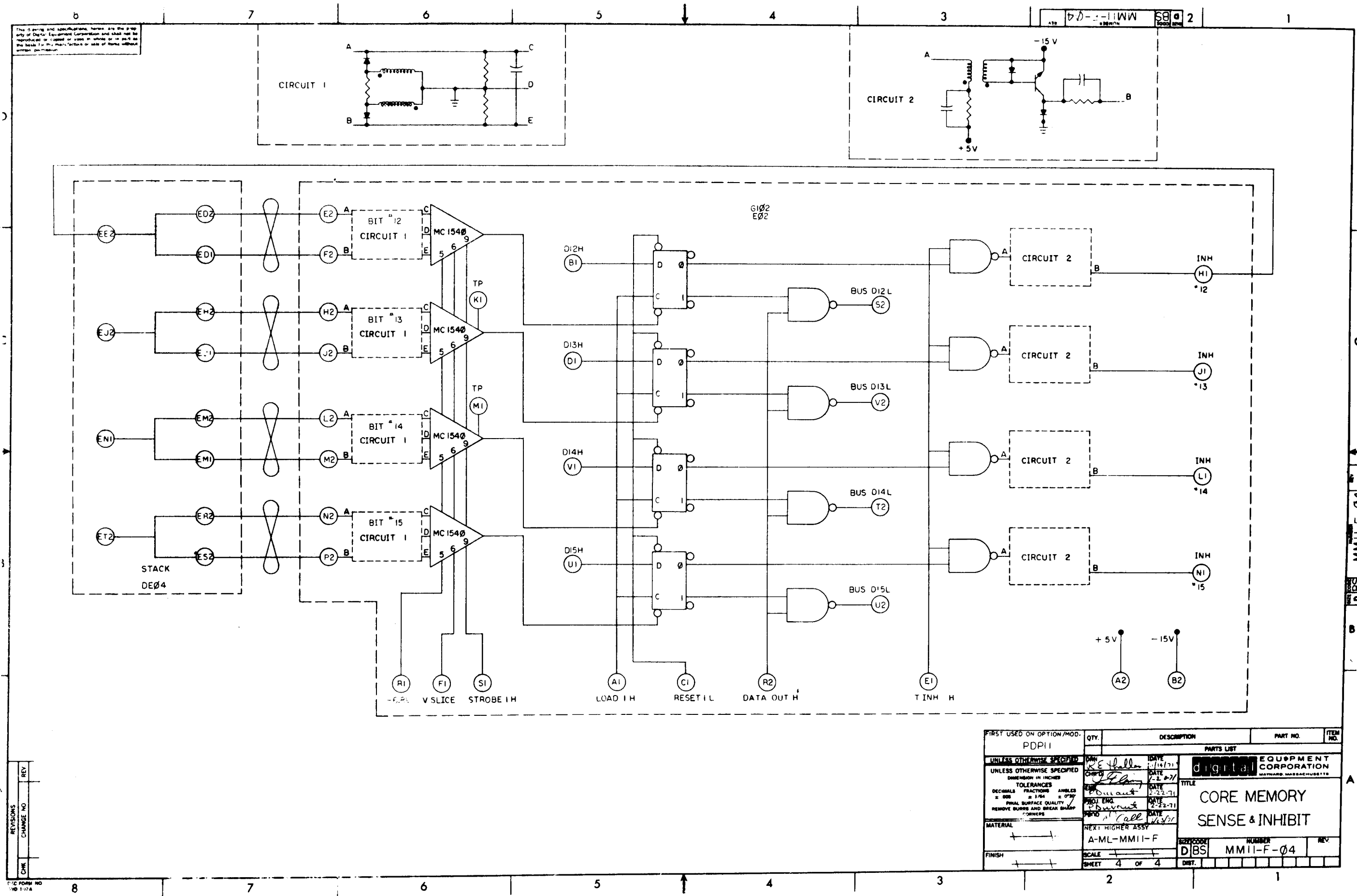
CIRCUIT 2



FIRST USED ON OPTION/MOD.		QTY.	DESCRIPTION	PART NO.	ITEM NO.
PDPII					
UNLESS OTHERWISE SPECIFIED		PARTS LIST			
UNLESS OTHERWISE SPECIFIED		digital EQUIPMENT CORPORATION			
UNLESS OTHERWISE SPECIFIED		MAYNARD MASSACHUSETTS			
UNLESS OTHERWISE SPECIFIED		TITLE			
UNLESS OTHERWISE SPECIFIED		CORE MEMORY			
UNLESS OTHERWISE SPECIFIED		SENSE & INHIBIT			
UNLESS OTHERWISE SPECIFIED		SIZE CODE			
UNLESS OTHERWISE SPECIFIED		DIBS			
UNLESS OTHERWISE SPECIFIED		NUMBER			
UNLESS OTHERWISE SPECIFIED		MM11-F-04			
UNLESS OTHERWISE SPECIFIED		REV			
UNLESS OTHERWISE SPECIFIED		1			
UNLESS OTHERWISE SPECIFIED		SCALE			
UNLESS OTHERWISE SPECIFIED		SHEET 3 OF 4			
UNLESS OTHERWISE SPECIFIED		DIST.			

REVISIONS
CHANGE NO.
REV.

DEC FORM NO.
ORD 102A



FIRST USED ON OPTION/MOD.		QTY.	DESCRIPTION	PART NO.	ITEM NO.
PDPII					
UNLESS OTHERWISE SPECIFIED		PARTS LIST			
UNLESS OTHERWISE SPECIFIED		digital EQUIPMENT CORPORATION			
DIMENSIONS IN INCHES		TITLE			
TOLERANCES		CORE MEMORY			
DECIMALS FRACTIONS ANGLES		SENSE & INHIBIT			
± .005 ± .010 ± .030		DBS			
FINAL SURFACE QUALITY		NUMBER			
REMOVE BURRS AND BREAK SHARP CORNERS		MMII-F-04			
MATERIAL		SCALE			
FINISH		SHEET 4 OF 4			

This drawing and specifications herein are the property of Digital Equipment Corporation and shall not be reproduced or copied or used in whole or in part as the basis for the manufacture or sale of items without written permission.

90-3-11WW S8 2

D

C

B

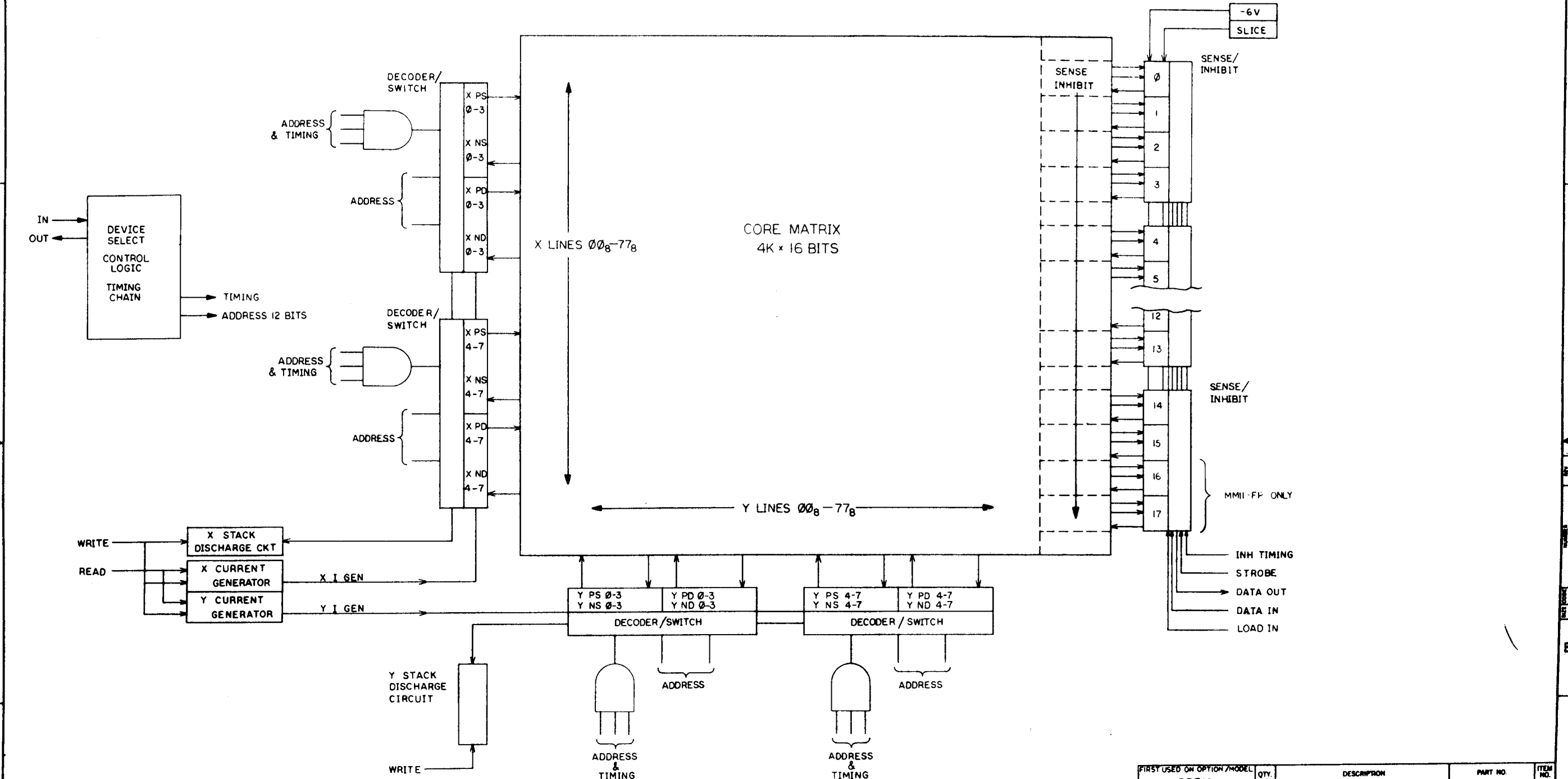
A

D

C

B

A

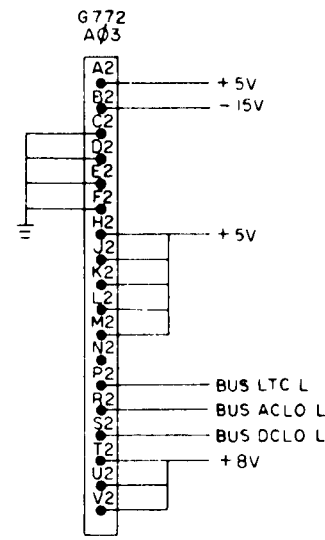
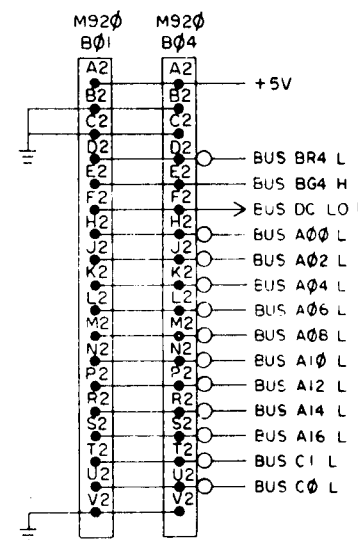
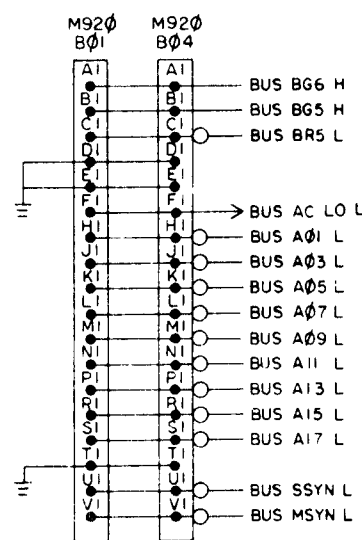
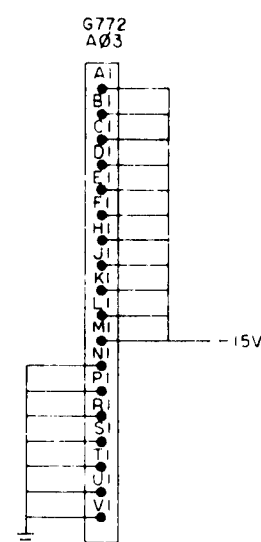
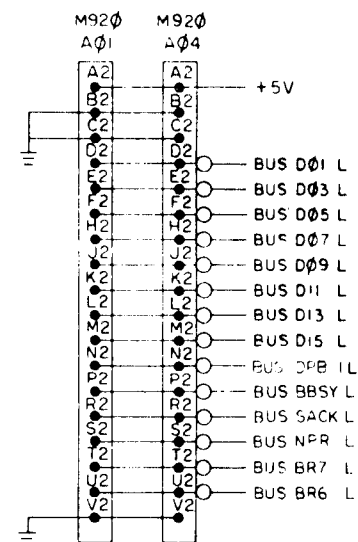
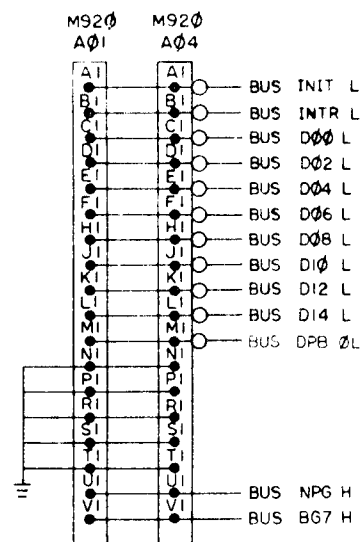


REV	CHG	NO
1	1	1

DEC FORM NO. 100A

FIRST USED ON OPTION/MODEL PDPII	QTY.	DESCRIPTION	PART NO.	ITEM NO.
UNLESS OTHERWISE SPECIFIED DIMENSION IN INCHES TOLERANCES DECIMALS FRACTIONS ANGLES ± .005 ± 1/64 ± 0°30' FINAL SURFACE QUALITY REMOVE BURRS AND BREAK SHARP CORNERS	DATE 1/25/71 DATE 1/20/71 DATE 2/22/71 DATE 2/22/71 DATE 1/14/71	PARTS LIST digital EQUIPMENT CORPORATION MAYNARD, MASSACHUSETTS TITLE MAGNETICS LOGIC DIAGRAM SIZE CODE DBS NUMBER MM11-F-05 REV.		
MATERIAL FINISH	NEXT HIGHER ASSY A-ML-MM11-F SCALE SHEET 1 OF 1			

THE DIMENSIONS AND SPECIFICATIONS HEREIN ARE THE PROPERTY OF Digital Equipment Corporation and shall not be reproduced or copied or used in whole or in part as the basis for the manufacture or sale of items without written permission.



REV	CHANGE NO
1	1

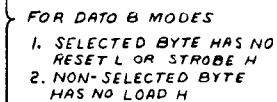
DWG FORM NO 102A

FIRST USED ON OPTION/MODEL PDPII	QTY	DESCRIPTION	PART NO	ITEM NO
UNLESS OTHERWISE SPECIFIED				
UNLESS OTHERWISE SPECIFIED				
DIMENSION IN INCHES				
TOLERANCES				
DECIMALS FRACTIONS ANGLES				
± .005 ± .001 ± .001				
FINAL SURFACE QUALITY				
REMOVE BURRS AND BREAK SHARP CORNERS				
MATERIAL				
FINISH				
NEXT HIGHER ASSY				
A-ML-MMII-F				
SCALE NONE				
SHEET OF				
DISTRIBUTION				
PARTS LIST				
digital EQUIPMENT CORPORATION				
WATFORD MASSACHUSETTS				
TITLE				
I/O CONNECTORS				
SIZE CODE				
D IC				
NUMBER				
MMII-F-06				
REV				
1				

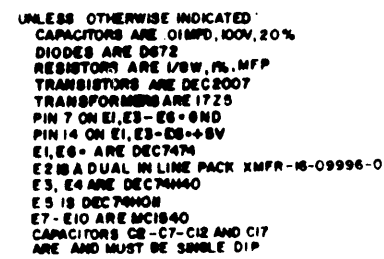
DRWG NO		REV LTR	
K-WL-MMII-F-Ø7			

REVISIONS			
REV LTR	ECO NO	DATE	ENG

DRAWN <i>RE Hellen</i>	DATE 1/15/71	digital EQUIPMENT CORPORATION MAYNARD, MASSACHUSETTS	TITLE WIRE LIST (MMII-F)	
CHECKED <i>J. J. Leming</i>	DATE 1-20-71		FOR TAPE* FILE*	
ENG <i>P. Durand</i>	DATE 3-5-71		SIZE CODE DWG NO	
PROJ ENG <i>P. Durand</i>	DATE 3-5-71		REV LTR	
PROD <i>D. Call</i>	DATE 3/5/71			
ASSY NO A-ML-MMII-F		K WL MMII-F-Ø7		
SCALE <i>1/1</i>		SHEET 1 OF 1		DIST.



FIRST USED ON OPTION MODEL	QTY.	DESCRIPTION	PART NO.	ITEM NO.
PDPII				
UNLESS OTHERWISE SPECIFIED	DRAWN	DATE		
UNLESS OTHERWISE SPECIFIED	CHECK'D	DATE		
DIMENSION IN INCHES	ENG'G	DATE		
TOLERANCES	PROD.	DATE		
DECIMALS FRACTIONS ANGLES ± .005 ± 1/64 ± 90°				
FINAL SURFACE QUALITY				
REMOVE BURRS AND BREAK SHARP CORNERS				
MATERIAL				
FINISH				

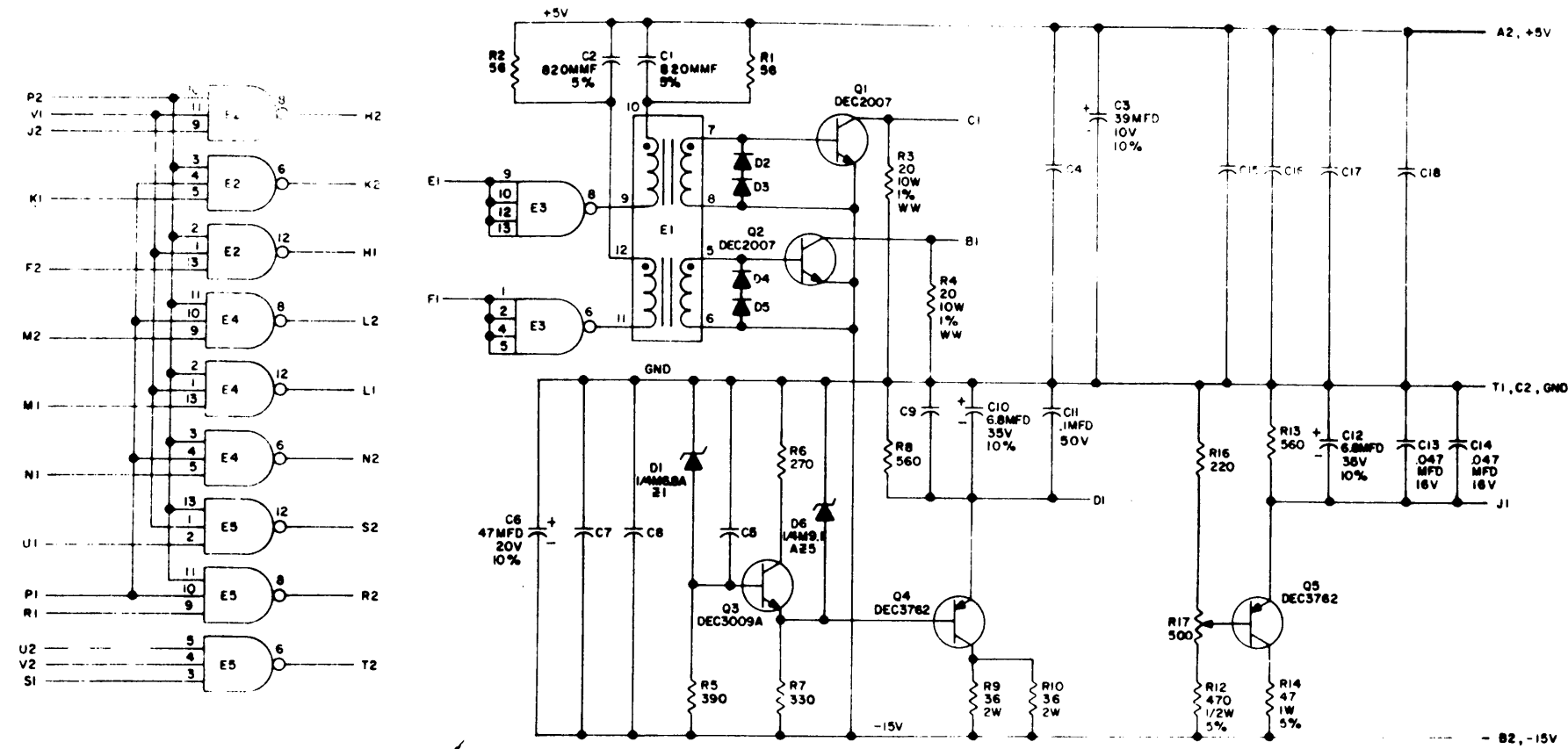


00001	A		C
00002	B		
00003			
00004			

WEEKEND & HOLIDAY CLOSING DATA	
DATE	TIME
10/27/90	11:00 AM
10/28/90	11:00 AM
10/29/90	11:00 AM
10/30/90	11:00 AM
10/31/90	11:00 AM
11/01/90	11:00 AM
11/02/90	11:00 AM
11/03/90	11:00 AM
11/04/90	11:00 AM
11/05/90	11:00 AM
11/06/90	11:00 AM
11/07/90	11:00 AM
11/08/90	11:00 AM
11/09/90	11:00 AM
11/10/90	11:00 AM
11/11/90	11:00 AM
11/12/90	11:00 AM
11/13/90	11:00 AM
11/14/90	11:00 AM
11/15/90	11:00 AM
11/16/90	11:00 AM
11/17/90	11:00 AM
11/18/90	11:00 AM
11/19/90	11:00 AM
11/20/90	11:00 AM
11/21/90	11:00 AM
11/22/90	11:00 AM
11/23/90	11:00 AM
11/24/90	11:00 AM
11/25/90	11:00 AM
11/26/90	11:00 AM
11/27/90	11:00 AM
11/28/90	11:00 AM
11/29/90	11:00 AM
11/30/90	11:00 AM

EQUIPMENT CORPORATION **SENSE INHIBIT-CARD GIO2**
0 00 GIO2-0-1 6

THIS SCHEMATIC IS FURNISHED ONLY FOR TEST AND MAINTENANCE PURPOSES. THE CIRCUITS ARE PROPRIETARY IN NATURE AND SHOULD BE TREATED ACCORDINGLY. COPYRIGHT 1966 BY DIGITAL EQUIPMENT CORPORATION



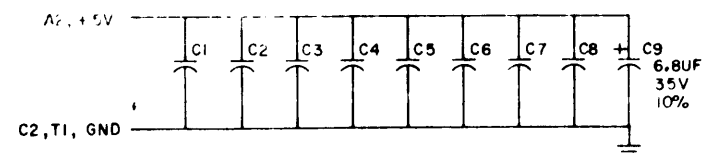
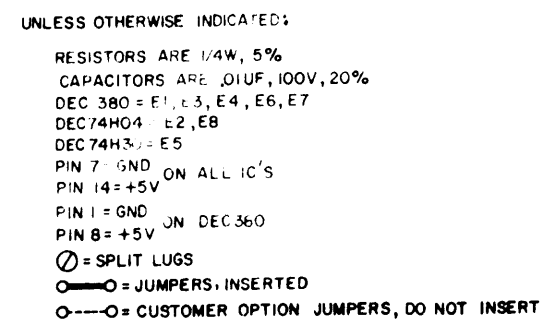
UNLESS OTHERWISE INDICATED:
 RESISTORS ARE 1/4W, 5%
 CAPACITORS ARE .01MFD, 100V, 20%
 PIN 7 ON EACH IC = GND
 PIN 14 ON EACH IC = +5V
 E2, E4, E5 ARE DEC74H10
 E3 IS DEC7440
 E1 IS TRANSFORMER DEC PART # 1509998-0
 DIODES ARE D664

REV	DATE	BY	CHKD	APPD
1	10/10/66	W	W	W
2	10/10/66	W	W	W
3	10/10/66	W	W	W
4	10/10/66	W	W	W
5	10/10/66	W	W	W
6	10/10/66	W	W	W
7	10/10/66	W	W	W
8	10/10/66	W	W	W
9	10/10/66	W	W	W
10	10/10/66	W	W	W

DRN BUTLER	DATE 10/10/66	TRANSISTOR & DIODE CONVERSION CHART		EQUIPMENT CORPORATION MAYNARD, MASSACHUSETTS	TITLE MEMORY LEVELS & GATES GIO3	
CHG W	DATE 10/10/66	DEC	EIA		SIZE C	CODE CS
ENG W	DATE 10/10/66	D664	IN5006		NUMBER GIO3-0-1	REV E
APP W	DATE 10/10/66	1/4W5.6A2	NONE		PRINTED CIRCUIT REV A	
QTE W	DATE 10/10/66	DEC3782	NONE			

GIO3-0-1

Dist. 7-44-43- +35-2 P/AM



REVISIONS		
CHK	CHG NO	REV

DEC FORM NO.
DRC 102

DRN	DATE
CHG	DATE
ENG	DATE
PROD	DATE

[illegible]

digital
EQUIPMENT
CORPORATION
MAYNARD, MASSACHUSETTS

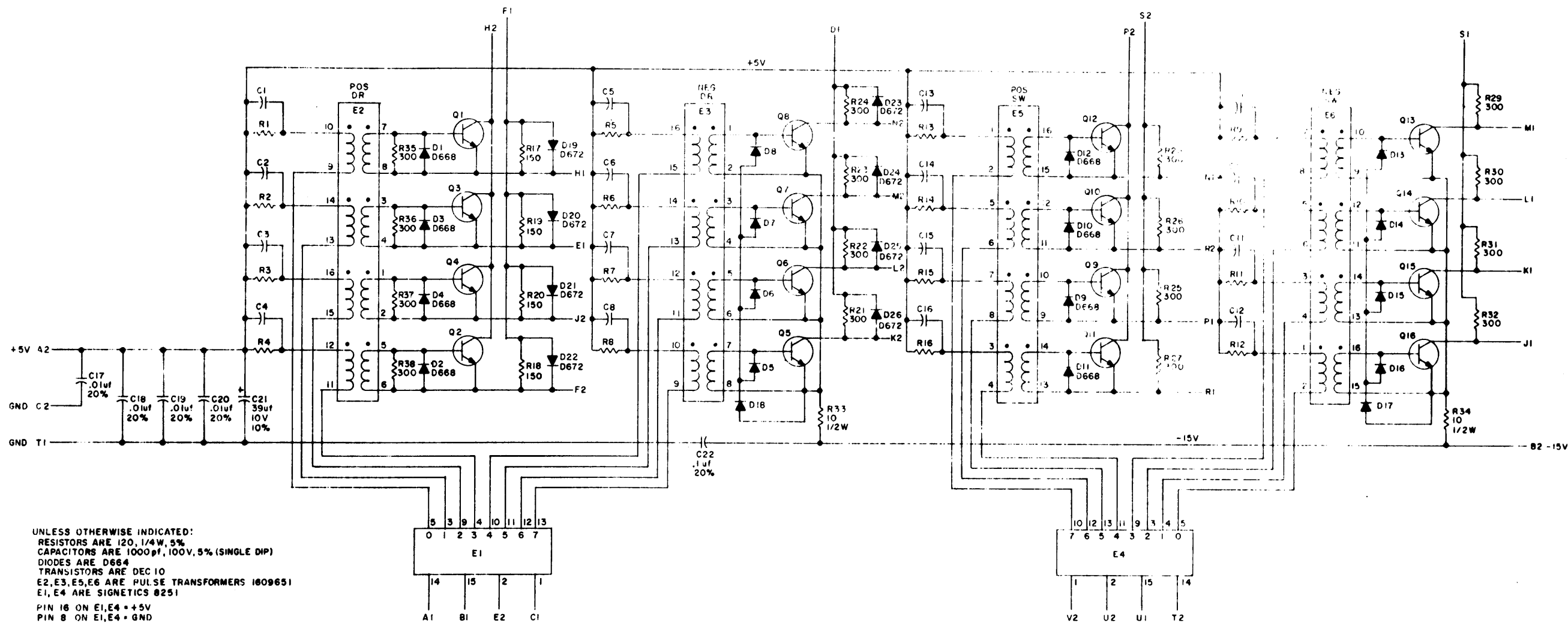
TITLE									
MEMORY DEVICE SELECT MI091									
SIZE	CODE	NUMBER						REV.	
C	CS	MI091-0-							
PRINTED CIRCUIT REV					A				

Pink Blue

DATE	2	MI091-0-1	FILE #
------	---	-----------	--------

THIS SCHEMATIC IS FURNISHED ONLY FOR TEST AND MAINTENANCE PURPOSES. THE CIRCUITS ARE PROPRIETARY IN NATURE AND SHOULD BE TREATED ACCORDINGLY. COPYRIGHT 1969 BY DIGITAL EQUIPMENT CORPORATION.

1-0-222450-7

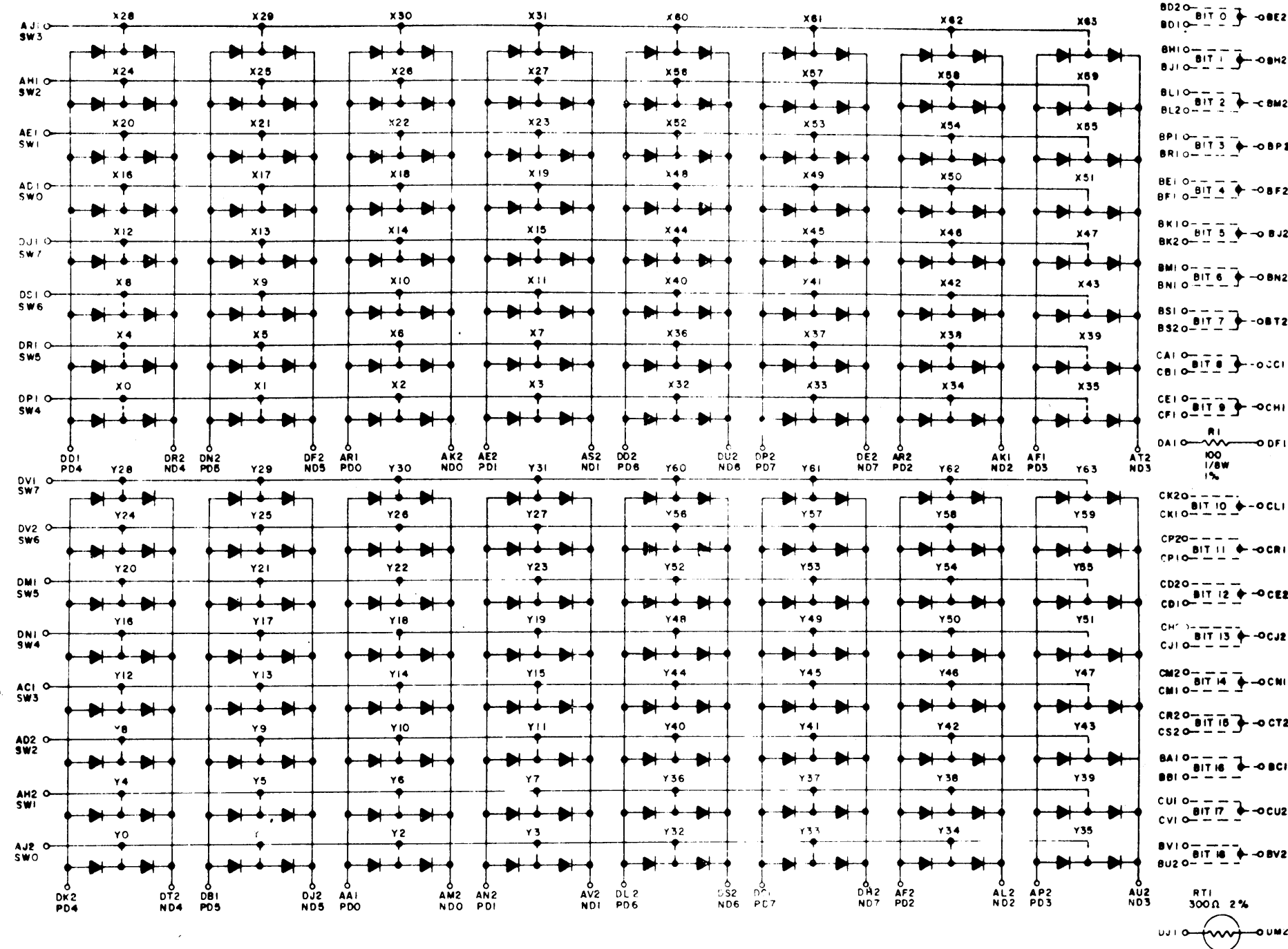


REV	DATE	BY	CHK	APP
1	10/1/69	W.A.	W.A.	
2	10/1/69	W.A.	W.A.	
3	10/1/69	W.A.	W.A.	

DESIGN	DATE	TRANSISTOR & DIODE CONVERSION CHART
BUTLER	8-16-69	
CHAND	9-5-69	
ENG	10/1/69	
PROD	10/1/69	

digital		X-Y DECODER SWITCH G226	
EQUIPMENT	DATE	CODE	NUMBER
CORPORATION	10/1/69	D	CS
MASSACHUSETTS		PRINTED CIRCUIT REV	

THIS SCHEMATIC IS FURNISHED ONLY FOR TEST AND MAINTENANCE PURPOSES. THE
CIRCUITS ARE PROPRIETARY IN NATURE AND SHOULD BE TREATED ACCORDINGLY.
COPYRIGHT 1988 BY DIGITAL EQUIPMENT CORPORATION



UNLESS OTHERWISE INDICATED
DIODES ARE D672

REVISIONS	
CHG NO	REV
00001	B
00002	C

DD-1
Mr. Waller
6-4-64
DATE

[illegible]

digital
EQUIPMENT
CORPORATION
MAYNARD MASSACHUSETTS

TITLE									
PLANAR STACK BOARD I G616									
SIZE		CODE		NUMBER				REV	
C		CS		G616-0-1				C	
PRINTED CIRCUIT REV						C			

MM11F,PS
RUN NAME

HNDWRP,V04 6/4/70
A/P PIN ORDER BAY -
NAME PIN ORDER

Q DRAW RV PG Y X Z

23-FEB-71
REMARKS

20:10
LENGTH EXCEPTIONS PAGE 1

RUN
NUMBER

B A01 DR 13
B A01 DR 13
B A01 DR 13
B A01 DR 13

H C03B1 1-01
H U01B2 1-02
H F03B1 1-03
1

R1 2
R1 1
R1

13-4/8

1
1
1
1

B A02
B A02
B A02
B A02

H C03A1 1-01
H U01C1 1-02
H F03A1 1-03
1

R1 1

13-4/8

2
2
2
2

B A03
B A03
B A03

H U01A1 1-01
H F01U1 1-02
1

R1 1

9-4/8

3
3
3

B A03
B A03
B A03

L U01B1 1-01
L F01J2 1-02
1

R1 1

8-4/8

4
4
4

B A04
B A04
B A04
B A04

H C03U1 1-01
H U01U1 1-02
H F03U1 1-03
1

2
1

13-2/8

5
5
5
5

B A05
B A05
B A05
B A05

H C03T2 1-01
H U01P1 1-02
H F03T2 1-03
1

2
1

13-6/8

6
6
6
6

B A06
B A06
B A06

H U01F2 1-01
H F01N1 1-02
1

R1 1

8-4/8

7
7
7

B A06
B A06
B A06

L U01T2 1-01
L F01M2 1-02
1

R1 1

7-0/8

8
8
8

B A07
B A07
B A07
B A07

H C02B1 1-01
H U01L1 1-02
H F02B1 1-03
1

2
1

13-0/8

9
9
9
9

B A08
B A08
B A08
B A08

H C02A1 1-01
H U01K1 1-02
H F02A1 1-03
1

2
1

13-0/8

10
10
10
10

MM11F,P3
RUN NAME

HNDWRP,V04 6/4/70
A/P PIN ORDER BAY -
NAME PIN ORDER

Q DRAW RV PG Y X Z

REMARKS 23-FEB-71

20:16 PAGE 2
LENGTH EXCEPTIONS

RUN
NUMBER

B A09	H	U01M1	1-01				R1	1						11
B A09	H	F01M1	1-02											11
B A09			1									7-4/8		11
B A09	L	U01N1	1-01				R1	1						12
B A09	L	F01F2	1-02											12
B A09			1									7-0/8		12
B A10	H	U02U1	1-01					2						13
B A10	H	U01H2	1-02				R1	1						13
B A10	H	F02U1	1-03											13
B A10			1									13-0/8		13
B A11	H	U02T2	1-01					2						14
B A11	H	U01J2	1-02				R1	1						14
B A11	H	F02T2	1-03											14
B A11			1									13-0/8		14
B A12	H	U01K2	1-01				R1	1						15
B A12	H	F01R1	1-02											15
B A12			1									8-2/8		15
B A12	L	U01R1	1-01				R1	1						16
B A12	L	F01K1	1-02											16
B A12			1									7-0/8		16
B A01=13	H	B02E2	1-01				I	1						17
B A01=13	H	U01E1	1-02				I							17
B A01=13			1									8-0/8		17
BUS A00	L	B04H2	1-01					2						18
BUS A00	L	B01H2	1-02					1						18
BUS A00	L	C01R2	1-03				R1							18
BUS A00			1									9-4/8		18
BUS A01	L	B01H1	1-01					2						19
BUS A01	L	B02E1	1-02				R1	1						19
BUS A01	L	B04H1	1-03											19
BUS A01			1									6-4/8		19
BUS A02	L	B04J2	1-01					2						20
BUS A02	L	B01J2	1-02					1						20
BUS A02	L	U01J2	1-03				R1							20
BUS A02			1									10-6/8		20

20:16 PAGE 3
LENGTH EXCEPTIONS RUN
NUMBER

BUS A03	L	B04J1	1-01		2		21
BUS A03	L	B01J1	1-02		1		21
BUS A03	L	U01E2	1-03	R1			21
BUS A03			1			11-0/8	21
BUS A04	L	B04K2	1-01		2		22
BUS A04	L	B01K2	1-02		1		22
BUS A04	L	U01J1	1-03	R1			22
BUS A04			1			11-2/8	22
BUS A05	L	B04K1	1-01		2		23
BUS A05	L	B01K1	1-02		1		23
BUS A05	L	U01U2	1-03	R1			23
BUS A05			1			12-4/8	23
BUS A06	L	B04L2	1-01		2		24
BUS A06	L	B01L2	1-02		1		24
BUS A06	L	U01S1	1-03	R1			24
BUS A06			1			12-2/8	24
BUS A07	L	B04L1	1-01		2		25
BUS A07	L	B01L1	1-02		1		25
BUS A07	L	U01U1	1-03	R1			25
BUS A07			1			12-2/8	25
BUS A08	L	B04M2	1-01		2		26
BUS A08	L	B01M2	1-02		1		26
BUS A08	L	U01V2	1-03	R1			26
BUS A08			1			12-2/8	26
BUS A09	L	B04M1	1-01		2		27
BUS A09	L	B01M1	1-02		1		27
BUS A09	L	U01N2	1-03	R1			27
BUS A09			1			11-6/8	27
BUS A10	L	B04N2	1-01		2		28
BUS A10	L	B01N2	1-02		1		28
BUS A10	L	U01S2	1-03	R1			28
BUS A10			1			11-6/8	28
BUS A11	L	B04N1	1-01		2		29
BUS A11	L	B01N1	1-02		1		29
BUS A11	L	U01R2	1-03	R1			29
BUS A11			1			11-6/8	29

MM11F, P3 RUN NAME	HNDWRP, V04 6/4//0 A/P PIN NAME	ORDER PIN	BAY = ORDER	Q	DRAW	RV	PG	Y	X	Z	REMARKS	23-FEB-71 20:10 LENGTH	PAGE 5 EXCEPTIONS	RUN NUMBER
BUS BG 01	H	A01V1	1-01							1				40
BUS BG 01	H	A04V1	1-02											40
BUS BG 01			1									3-6/8		40
BUS BK 04	L	B01U2	1-01							1				41
BUS BK 04	L	B04U2	1-02											41
BUS BK 04			1									3-6/8		41
BUS BK 02	L	B01C1	1-01							1				42
BUS BK 02	L	B04C1	1-02											42
BUS BK 02			1									3-6/8		42
BUS BK 06	L	A01U2	1-01							1				43
BUS BK 06	L	A04U2	1-02											43
BUS BK 06			1									3-6/8		43
BUS BK 01	L	A01T2	1-01							1				44
BUS BK 01	L	A04T2	1-02											44
BUS BK 01			1									3-6/8		44
BUS BSY	L	A01P2	1-01 *							1				45
BUS BSY	L	A04P2	1-02 *											45
BUS BSY			1									3-6/8		45
BUS C0	L	B01U2	1-01							2				46
BUS C0	L	B04U2	1-02							1				46
BUS C0	L	C01N1	1-03								R1			46
BUS C0			1									8-6/8		46
BUS C1	L	B01T2	1-01							2				47
BUS C1	L	B04T2	1-02							1				47
BUS C1	L	C01P1	1-03								R1			47
BUS C1			1									9-0/8		47
BUS D SEL	H	B02S2	1-01							1				48
BUS D SEL	H	C01K2	1-02								R1			48
BUS D SEL			1									4-2/8		48
BUS DP80	L	A04M1	1-01							2				49
BUS DP80	L	A01M1	1-02							1				49
BUS DP80	L	C01V2	1-03							2				49
BUS DP80	L	C01T2	1-04								R1			49
BUS DP80			1									19-6/8		49

MM11F,PJ
RUN NAME

HNDWRP,V04 6/4/70
A/P PIN ORDER
NAME PIN

BAY #
ORDER

Q DRAW RV PG Y X Z

23-FEB-71
REMARKS

20:16 PAGE 6
LENGTH EXCEPTIONS

RUN
NUMBER

BUS DPB1
BUS DPB1
BUS DPB1
BUS DPB1
BUS DPB1

L A04N2 1-01
L A01N2 1-02
L U01S2 1-03
L U01V2 1-04
1

I
I
I
R1

2
1
2

19-6/8

50
50
50
50
50

BUS D00
BUS D00
BUS D00
BUS D00
BUS D00

L A04C1 1-01
L A01C1 1-02
L B02R1 1-03
L U03S2 1-04
1

1
2
1

18-4/8

51
51
51
51
51

BUS D01
BUS D01
BUS D01
BUS D01
BUS D01

L A04U2 1-01
L A01U2 1-02
L B02M2 1-03
L U03V2 1-04
1

1
2
1

18-6/8

52
52
52
52
52

BUS D02
BUS D02
BUS D02
BUS D02
BUS D02

L A04U1 1-01
L A01U1 1-02
L B02N1 1-03
L U03T2 1-04
1

1
2
1

18-4/8

53
53
53
53
53

BUS D03
BUS D03
BUS D03
BUS D03
BUS D03

L A04E2 1-01
L A01E2 1-02
L B02S1 1-03
L U03U2 1-04
1

1
2
1

18-4/8

54
54
54
54
54

BUS D04
BUS D04
BUS D04
BUS D04
BUS D04

L A01E1 1-01
L A04E1 1-02
L B02M2 1-03
L U02S2 1-04
1

1
2
1

18-0/8

55
55
55
55
55

BUS D05
BUS D05
BUS D05
BUS D05
BUS D05

L A04F2 1-01
L A01F2 1-02
L B02H2 1-03
L U02V2 1-04
1

1
2
1

18-2/8

56
56
56
56
56

BUS D06
BUS D06
BUS D06
BUS D06
BUS D06

L A04F1 1-01
L A01F1 1-02
L B02J1 1-03
L U02T2 1-04
1

1
2
1

18-0/8

57
57
57
57
57

MM11F,PS RUN NAME	HNDWRP,V04 6/4/70 A/P PIN NAME	ORDER PIN	BAY • ORDER	Q	DRAW	RV	PG	Y	X	Z	REMARKS	23-FEB-71 20:10 LENGTH	PAGE 7 EXCEPTIONS	RUN NUMBER
BUS D07	L	A04H2	1-01							1				58
BUS D07	L	A01H2	1-02							2				58
BUS D07	L	B02K1	1-03							1				58
BUS D07	L	D02J2	1-04											58
BUS D07			1									18-0/8		58
BUS D08	L	A01H1	1-01							1				59
BUS D08	L	A04H1	1-02							2				59
BUS D08	L	B02L2	1-03							1				59
BUS D08	L	E03S2	1-04											59
BUS D08			1									20-4/8		59
BUS D09	L	A04J2	1-01							1				60
BUS D09	L	A01J2	1-02							2				60
BUS D09	L	B02U1	1-03							1				60
BUS D09	L	E03V2	1-04											60
BUS D09			1									20-6/8		60
BUS D10	L	A04J1	1-01							1				61
BUS D10	L	A01J1	1-02							2				61
BUS D10	L	B02C1	1-03							1				61
BUS D10	L	E03T2	1-04											61
BUS D10			1									20-4/8		61
BUS D11	L	A04K2	1-01							2				62
BUS D11	L	A01K2	1-02							1				62
BUS D11	L	C01T2	1-03					R1		2				62
BUS D11	L	E03U2	1-04											62
BUS D11			1									20-2/8		62
BUS D12	H	A01K1	1-01							1				63
BUS D12	H	A04K1	1-02							2				63
BUS D12	H	B02F2	1-03							1				63
BUS D12	H	E02S2	1-04											63
BUS D12			1									20-0/8		63
BUS D13	L	A04L2	1-01							1				64
BUS D13	L	A01L2	1-02							2				64
BUS D13	L	C01F2	1-03					R1		1				64
BUS D13	L	E02V2	1-04											64
BUS D13			1									20-0/8		64
BUS D14	L	A04L1	1-01							2				65
BUS D14	L	A01L1	1-02							1				65
BUS D14	L	U01H1	1-03					R1		2				65
BUS D14	L	E02T2	1-04											65
BUS D14			1									20-0/8		65

MM11F,P3 RUN NAME	A/P	HNDWRP,V04 6/4//0 PIN NAME	ORDER PIN	BAY # ORDER	Q	DRAW	RV	PG	Y	X	Z	REMARKS	23-FEB-71 20116 LENGTH	PAGE 8 EXCEPTIONS	RUN NUMBER
BUS D15	L	A04M2		1-01							2				66
BUS D15	L	A01M2		1-02							1				66
BUS D15	L	C01U2		1-03				R1			2				66
BUS D15	L	E02U2		1-04											66
BUS D15				1									19-6/8		66
BUS DC L0	L	A03S2		1-01				I			1				67
BUS DC L0	L	B04F2		1-02				I			2				67
BUS DC L0	L	B01F2		1-03				I			1				67
BUS DC L0	L	C01E2		1-04				I							67
BUS DC L0				1									12-6/8		67
BUS INIT	L	A04A1		1-01							2				68
BUS INIT	L	A01A1		1-02							1				68
BUS INIT	L	C01J2		1-03				R1							68
BUS INIT				1									12-4/8		68
BUS INTR	L	A01B1		1-01							1				69
BUS INTR	L	A04B1		1-02											69
BUS INTR				1									3-6/8		69
BUS MSYN	L	B04V1		1-01							1				70
BUS MSYN	L	B01V1		1-02							2				70
BUS MSYN	L	C01H2		1-03				R1							70
BUS MSYN				1									7-2/8		70
BUS NPG	H	A01U1		1-01							1				71
BUS NPG	H	A04U1		1-02											71
BUS NPG				1									3-6/8		71
BUS NPR	L	A01S2		1-01 *				I			1				72
BUS NPR	L	A04S2		1-02 *				I							72
BUS NPR				1									3-6/8		72
BUS SACK	L	A01R2		1-01							1				73
BUS SACK	L	A04R2		1-02											73
BUS SACK				1									3-6/8		73
BUS SSYN	L	B04U1		1-01							1				74
BUS SSYN	L	B01U1		1-02							2				74
BUS SSYN	L	C01O1		1-03				R1							74
BUS SSYN				1									7-0/8		74

MM11F,PS RUN NAME	HNDWRP,V04 6/4/70			23-FEB-71				20:16 PAGE 9		RUN NUMBER		
	A/P	PIN NAME	ORDER PIN	BAY • ORDER	Q	DRAW RV PG Y	X	Z	REMARKS		LENGTH	EXCEPTIONS
DATA OUT		U01B1		1-01								75
DATA OUT		U02R2		1-02								75
DATA OUT		U03R2		1-03								75
DATA OUT		U03R2		1-04								75
DATA OUT		U02R2		1-05								75
DATA OUT		U01R2		1-06								75
DATA OUT				1								75
										20-0/8		
U00	H	U02P1		1-01								76
U00	H	U03B1		1-02								76
U00				1								76
										6-4/8		
U01	H	U02L1		1-01								77
U01	H	U03U1		1-02								77
U01				1								77
										7-0/8		
U02	H	U02M1		1-01								78
U02	H	U03V1		1-02								78
U02				1								78
										8-6/8		
U03	H	U02R2		1-01								79
U03	H	U03U1		1-02								79
U03				1								79
										8-0/8		
U04	H	U02N2		1-01								80
U04	H	U02B1		1-02								80
U04				1								80
										6-4/8		
U05	H	U02F1		1-01								81
U05	H	U02U1		1-02								81
U05				1								81
										7-2/8		
U06	H	U02H1		1-01								82
U06	H	U02V1		1-02								82
U06				1								82
										9-0/8		
U07	H	U02K2		1-01								83
U07	H	U02U1		1-02								83
U07				1								83
										8-6/8		
U08	H	U02J2		1-01								84
U08	H	U03B1		1-02								84
U08				1								84
										9-4/8		
U09	H	U02A1		1-01								85
U09	H	U03U1		1-02								85
U09				1								85
										10-6/8		

MM11F.P3 RUN NAME	A/P	HNDWRP,V04 6/4/70 PIN NAME	ORDER PIN	BAY ORDER	Q	DRAW	RV	PG	Y	X	Z	REMARKS	23-FEB-71 20:16 LENGTH	PAGE 10 EXCEPTIONS	RUN NUMBER
U10	H	B02B1		1-01							1				86
U10	H	E03V1		1-02											86
U10				1									12-2/8		86
U11	H	C01M1		1-01				R1			1				87
U11	H	E03U1		1-02											87
U11				1									8-6/8		87
U12	H	B02U2		1-01							1				88
U12	H	E02B1		1-02											88
U12				1									10-0/8		88
U13	H	C01U2		1-01				R1			1				89
U13	H	E02U1		1-02											89
U13				1									7-6/8		89
U14	H	U01F1		1-01				R1			1				90
U14	H	E02V1		1-02											90
U14				1									6-4/8		90
U15	H	C01U1		1-01				R1			1				91
U15	H	E02U1		1-02											91
U15				1									7-6/8		91
U17	H	C01V1		1-01				I			1				92
U17	H	E01V1		1-02				I							92
U17				1									7-4/8		92
U18	H	C01S1		1-01				I			1				93
U18	H	E01U1		1-02				I							93
U18				1									6-2/8		93
GND 01		A01B2		1-01							1				94
GND 01		A04B2		1-02											94
GND 01				1									3-6/8		94

20:16 PAGE 11
LENGTH EXCEPTIONS RUN
NUMBER

GND 02	A01C2	1-01	I	1	95
GND 02	A01T1	1-02	I	2	95
GND 02	B01C2	1-03	I	1	95
GND 02	B01T1	1-04	I	2	95
GND 02	C01C2	1-05	I	1	95
GND 02	C01T1	1-06	I	2	95
GND 02	D01C2	1-07	I	1	95
GND 02	D01T1	1-08	I	2	95
GND 02	E01C2	1-09	I	1	95
GND 02	E01T1	1-10	I	2	95
GND 02	F01C2	1-11	I	1	95
GND 02	F01T1	1-12	I		95
GND 02		1			41=0/8 95
GND 03	A01N1	1-01		1	96
GND 03	A04N1	1-02			96
GND 03		1			3=6/8 96
GND 04	A01P1	1-01		1	97
GND 04	A04P1	1-02			97
GND 04		1			3=6/8 97
GND 05	A01R1	1-01		1	98
GND 05	A04R1	1-02			98
GND 05		1			3=6/8 98
GND 06	A01S1	1-01		1	99
GND 06	A04S1	1-02			99
GND 06		1			3=6/8 99
GND 06A	A04C2	1-01	R1	1	100
GND 06A	A04T1	1-02	R1	2	100
GND 06A	B04C2	1-03	R1	1	100
GND 06A	B04T1	1-04	R1		100
GND 06A		1			11=4/8 100
GND 07	C04C2	1-01	I	1	101
GND 07	C04T1	1-02	I	2	101
GND 07	D04C2	1-03	I	1	101
GND 07	D04T1	1-04	I	2	101
GND 07	E04C2	1-05	I	1	101
GND 07	E04T1	1-06	I	2	101
GND 07	F04C2	1-07	I	1	101
GND 07	F04T1	1-08	I		101
GND 07		1			26=2/8 101

RUN
NUMBER

[illegible]

MM11F,PS
RUN NAME

HNDWRP,V04 5/4/70
A/P PIN ORDER
NAME PIN ORDER

Q DRAW RV PG Y X Z

23-FEB-71
REMARKS

20:10
LENGTH EXCEPTIONS

PAGE 14

RUN
NUMBER

INH 08		E03H1	1-01					1					118
INH 08		E04C1	1-02										118
INH 08			1								3-0/8		118
INH 09		E03J1	1-01					1					119
INH 09		E04H1	1-02										119
INH 09			1								2-6/8		119
INH 10		E03L1	1-01					1					120
INH 10		E04L1	1-02										120
INH 10			1								2-6/8		120
INH 11		E03N1	1-01					1					121
INH 11		E04R1	1-02										121
INH 11			1								3-0/8		121
INH 12		E02H1	1-01					1					122
INH 12		E04E2	1-02										122
INH 12			1								3-6/8		122
INH 13		E02J1	1-01					1					123
INH 13		E04J2	1-02										123
INH 13			1								3-4/8		123
INH 14		E02L1	1-01					1					124
INH 14		E04N1	1-02										124
INH 14			1								3-4/8		124
INH 15		E02N1	1-01					1					125
INH 15		E04T2	1-02										125
INH 15			1								3-6/8		125
+3V		C03A2	1-01					1					126
+3V		C03J1	1-02					2					126
+3V		C02A2	1-03					1					126
+3V		C02J1	1-04					2					126
+3V		F02J1	1-05					1					126
+3V		F02A2	1-06					2					126
+3V		F03J1	1-07					1					126
+3V		F03A2	1-08										126
+3V			1								27-2/8		126
LOAD 00	H	C01H1	1-01					1					127
LOAD 00	H	U02A1	1-02					2					127
LOAD 00	H	U03A1	1-03					1					127
LOAD 00	H	E01J1	1-04										127
LOAD 00			1								14-4/8		127

MAN-10,03
RUN NAME

HNDWRP, V04 6/4/70
A/P PIN ORDER
NAME PIN

BAY •
ORDER

Q

DRAW RV PG Y

X

Z

REMARKS

23-FEB-71

20:10

PAGE 15

LENGTH EXCEPTIONS

RUN
NUMBER

LOAD 01	H	001F1	1-01		R1	1			128
LOAD 01	H	001A1	1-02		R1	2			128
LOAD 01	H	002A1	1-03			1			128
LOAD 01	H	003A1	1-04						128
LOAD 01			1					12-4/8	128
LUG 1		001L2	1-01		R1	1			129
LUG 1		001P2	1-02						129
LUG 1			1					10-6/8	129
READ	H	00301	1-01			1			130
READ	H	00201	1-02			2			130
READ	H	001P2	1-03		I	1			130
READ	H	002V2	1-04			2			130
READ	H	003V2	1-05			1			130
READ	H	00301	1-06			2			130
READ	H	00201	1-07			1			130
READ	H	002V2	1-08			2			130
READ	H	003V2	1-09						130
READ			1					31-2/8	130
RESET 00	L	00102	1-01 H		R1	1		HND ORDER?	131
RESET 00	L	00101	1-02 H		R1	2		HND ORDER?	131
RESET 00	L	00201	1-03 *		R1	1			131
RESET 00	L	00301	1-04 *		R1				131
RESET 00			1					16-2/8	131
RESET 01	L	001E1	1-01 H		R1	1		HND ORDER?	132
RESET 01	L	00101	1-02 H		R1	2		HND ORDER?	132
RESET 01	L	00201	1-03 *		R1	1			132
RESET 01	L	00301	1-04 *		R1				132
RESET 01			1					12-6/8	132
#15V		003B2	1-01 *		R1	2			133
#15V		003F1	1-02 *		R1	1			133
#15V		002F1	1-03 *		R6				133
#15V			1					5-6/8	133
#15V (1)		A03A1	1-01			1			134
#15V (1)		A03B2	1-02						134
#15V (1)			1					2-6/8	134
#15V (2)		A0301	1-01			1			135
#15V (2)		A03E1	1-02						135
#15V (2)			1					2-4/8	135

MM11F,PS
RUN NAME

HWDRP, V. 4 6/4/70
A/P PIN ORDER
NAME PIN

BAY -
ORDER

Q DRAW RV PG Y X Z

REMARKS

23-FEB-71

20:10

PAGE 16

LENGTH EXCEPTIONS

RUN
NUMBER

#15V (3)
#15V (3)
#15V (3)
#15V (3)

F02B2
F03F1
F02F1

1-01 *
1-02 *
1-03 *
1

I
I
I

2
1

5-6/8

136
136
136
136

#0,8V
#0,8V
#0,8V
#0,8V
#0,8V
#0,8V
#0,8V
#0,8V

U02R1
U03R1
E03R1
E02R1
E01R1
F01U1

1-01
1-02
1-03
1-04
1-05
1-06
1

R1
R1
R1
R1
R1
R1

2
1
2
1
2

16-6/8

137
137
137
137
137
137
137

STROBE 00
STROBE 00
STROBE 00
STROBE 00
STROBE 00

H C01R1
H U02S1
H U03S1
H E01S2

1-01
1-02
1-03
1-04
1

R1

I

1
2
1

13-4/8

138
138
138
138
138

STROBE 01
STROBE 01
STROBE 01
STROBE 01
STROBE 01

H C01A1
H E01S1
H E02S1
H E03S1

1-01
1-02
1-03
1-04
1

R1
I

1
2
1

14-6/8

139
139
139
139
139

TUR
TUR
TUR

H C01V2
H F01V1

1-01
1-02
1

R1

1

11-2/8

140
140
140

THERM
THERM
THERM

F04M2
F04A1

1-01 *
1-02 *
1

I
I

1

3-6/8

141
141
141

TIG
TIG
TIG
TIG

L B03L1
L B03L2
L U01V1

1-01
1-02
1-03
1

I
I
I

2
1

12-4/8

142
142
142
142

TINH
TINH
TINH
TINH
TINH
TINH
TINH
TINH
TINH

H C01C1
H U02E1
H U03E1
H E03E1
H E02E1
H E01E1
H F01E1
H F01F1

1-01
1-02
1-03
1-04
1-05
1-06
1-07
1-08
1

R1
R1
R1
R1
R1
R1
R1
R1

1
2
1
2
1
2
1

26-0/8

143
143
143
143
143
143
143
143

MM11F,PS RUN NAME	HNDWRP,V04 6/4/70				Q	URAW	RV	PG	Y	X	Z	REMARKS	23-FEB-71	20:10	PAGE 17	RUN NUMBER
	A/P	PIN NAME	ORDER PIN	BAY = ORDER										LENGTH	EXCEPTIONS	
TSS	H	C01M2		1-01 H							1				HND ORDER?	144
TSS	H	F01P1		1-02 *							2					144
TSS	H	F01V2		1-03 *												144
TSS				1										14-0/8		144
V SLICE		U02F1		1-01							2					145
V SLICE		U03F1		1-02							1					145
V SLICE		L03F1		1-03							2					145
V SLICE		L02F1		1-04							1					145
V SLICE		L01F1		1-05							2					145
V SLICE		F01J1		1-06												145
V SLICE				1										18-2/8		145
X DISC	H	C02S2		1-01							2					146
X DISC	H	C02S1		1-02							1					146
X DISC	H	F01C1		1-03							2					146
X DISC	H	F02S1		1-04							1					146
X DISC	H	F02S2		1-05												146
X DISC				1										18-0/8		146
XUR (0-3)		C02E2		1-01							1					147
XUR (0-3)		F01H1		1-02												147
XUR (0-3)				1										11-0/8		147
XUR (4-7)		F01L1		1-01							1					148
XUR (4-7)		F02E2		1-02												148
XUR (4-7)				1										3-2/8		148
XNDR-0		C02K2		1-01							1					149
XNDR-0		C04K2		1-02												149
XNDR-0				1												149
XNDR-1		C02L2		1-01							1					150
XNDR-1		C04S2		1-02												150
XNDR-1				1										3-4/8		150
XNDR-2		C02M2		1-01							1					151
XNDR-2		C04K1		1-02												151
XNDR-2				1										3-2/8		151
XNDR-3		C02N2		1-01							1					152
XNDR-3		C04T2		1-02												152
XNDR-3				1										3-4/8		152
XNDR-6		F02M2		1-01							1					153
XNDR-6		F04U2		1-02												153
XNDR-6				1										3-6/8		153

MM11F,PS
RUN NAME

HNDWRP,V04 6/4/70
A/P PIN ORDER DAY
NAME PIN ORDER

Q DRAW RV FS Y X Z

23-FEB-71
REMARKS

20:16
LENGTH EXCEPTIONS

PAGE 18

RUN
NUMBER

XND=7	F02N2	1-01				1		154
XND=7	F04E2	1-02						154
XND=7		1					3-4/8	154
XND4	F02K2	1-01				1		155
XND4	F04R2	1-02						155
XND4		1					3-6/8	155
XND5	F02L2	1-01				1		156
XND5	F04F2	1-02						156
XND5		1					3-4/8	156
XPDR=0	C02J2	1-01				1		157
XPDR=0	C04R1	1-02						157
XPDR=0		1					3-4/8	157
XPDR=1	C02E1	1-01				1		158
XPDR=1	C04E2	1-02						158
XPDR=1		1					3-4/8	158
XPDR=2	C02F2	1-01				1		159
XPDR=2	C04R2	1-02						159
XPDR=2		1					3-6/8	159
XPDR=3	C02H1	1-01				1		160
XPDR=3	C04F1	1-02						160
XPDR=3		1					3-4/8	160
XPDR=6	F02F2	1-01				1		161
XPDR=6	F04U2	1-02						161
XPDR=6		1					3-4/8	161
XPDR=7	F02H1	1-01				1		162
XPDR=7	F04P2	1-02						162
XPDR=7		1					4-0/8	162
XPDR4	F02J2	1-01				1		163
XPDR4	F04U1	1-02						163
XPDR4		1					3-2/8	163
XPDR5	F02E1	1-01				1		164
XPDR5	F04N2	1-02						164
XPDR5		1					4-0/8	164
XS (0=3)	C02U2	1-01				1		165
XS (0=3)	F01K2	1-02						165
XS (0=3)		1					9-4/8	165

MM11F,P3
RUN NAME

HNDWRP,V04 6/4//0
A/P PIN ORDER
NAME PIN

BAY -
ORDER

Q DRAW RV PG Y X Z

23-FEB-71
REMARKS

20:16
LENGTH EXCEPTIONS

PAGE 19

RUN
NUMBER

XS (4=7)
XS (4=7)
XS (4=7)

F01R2
F02U2

1-01
1-02
1

1

3-0/8

166
166
166

XSW0
XSW0
XSW0
XSW0

C02M1
C02P1
C04U1

1-01
1-02
1-03
1

1
2

6-4/8

167
167
167
167

XSW1
XSW1
XSW1
XSW1

C02L1
C02R2
C04E1

1-01
1-02
1-03
1

R1
R1
I

2
1

6-6/8

168
168
168
168

XSW2
XSW2
XSW2
XSW2

C02K1
C02R1
C04H1

1-01
1-02
1-03
1

2
1

6-4/8

169
169
169
169

XSW3
XSW3
XSW3
XSW3

C02N1
C02J1
C04J1

1-01
1-02
1-03
1

2
1

6-0/8

170
170
170
170

XSW4
XSW4
XSW4
XSW4

F02M1
F02P1
F04P1

1-01
1-02
1-03
1

1
2

5-6/8

171
171
171
171

XSW5
XSW5
XSW5
XSW5

F02L1
F02R2
F04R1

1-01
1-02
1-03
1

2
1

6-0/8

172
172
172
172

XSW6
XSW6
XSW6
XSW6

F02K1
F02R1
F04S1

1-01
1-02
1-03
1

2
1

6-2/8

173
173
173
173

XSW7
XSW7
XSW7
XSW7

F04U1
F02J1
F02N1

1-01 *
1-02 *
1-03 *
1

R1
R1
I

1
2

6-4/8

174
174
174
174

MM11F, P3
NAME

HNDWRP, V04 6/4/70

23-FEB-71

20:10

PAGE 21

A/P	PIN NAME	ORDER PIN	BAY • ORDER	Q	DRAW	RV	PG	Y	X	Z	REMARKS	LENGTH	EXCEPTIONS	RUN NUMBER
YPDR=0	C03J2		1-01							1				186
YPDR=0	C04A1		1-02											186
YPDR=0			1									3-2/8		186
YPDR=2	C03F2		1-01							1				187
YPDR=2	C04F2		1-02											187
YPDR=2			1									2-6/8		187
YPDR=3	C03H1		1-01							1				188
YPDR=3	C04P2		1-02											188
YPDR=3			1									3-4/8		188
YPDR=4	F03J2		1-01							1				189
YPDR=4	F04K2		1-02											189
YPDR=4			1									2-6/8		189
YPDR=5	F03E1		1-01							1				190
YPDR=5	F04B1		1-02											190
YPDR=5			1									3-2/8		190
YPDR=6	F03F2		1-01							1				191
YPDR=6	F04L2		1-02											191
YPDR=6			1									3-0/8		191
YPDR=7	F03H1		1-01							1				192
YPDR=7	F04C1		1-02											192
YPDR=7			1									3-0/8		192
YPR=1	C03E1		1-01							1				193
YPR=1	C04N2		1-02											193
YPR=1			1									3-4/8		193
YS (0=3)	C03U2		1-01							1				194
YS (0=3)	F01L2		1-02											194
YS (0=3)			1									9-6/8		194
YS (4=7)	F01N2		1-01							1				195
YS (4=7)	F03U2		1-02											195
YS (4=7)			1									3-4/8		195
YSW0	C03H1		1-01							1				196
YSW0	C03P1		1-02							2				196
YSW0	C04J2		1-03											196
YSW0			1									6-0/8		196

MM11F,P3
RUN NAME

HNDWRP,V04 6/4/70
A/P PIN ORDER DAY -
NAME PIN ORDER

Q DRAW RV PG Y X Z

23-FEB-71
REMARKS

20:16
LENGTH EXCEPTIONS

PAGE 22

RUN
NUMBER

YSW1		C03R2	1-01						2			197
YSW1		C03L1	1-02						1			197
YSW1		C04H2	1-03									197
YSW1			1							6-2/8		197
YSW2		C03R1	1-01						2			198
YSW2		C03K1	1-02						1			198
YSW2		C04U2	1-03									198
YSW2			1							6-4/8		198
YSW3		C03N1	1-01						2			199
YSW3		C03J1	1-02						1			199
YSW3		C04C1	1-03									199
YSW3			1							6-0/8		199
YSW4		F03M1	1-01						1			200
YSW4		F03P1	1-02						2			200
YSW4		F04N1	1-03									200
YSW4			1							5-4/8		200
YSW5		F03L1	1-01						2			201
YSW5		F04M1	1-02						1			201
YSW5		F03R2	1-03									201
YSW5			1							5-4/8		201
YSW6		F03K1	1-01						2			202
YSW6		F03R1	1-02						1			202
YSW6		F04V2	1-03									202
YSW6			1							6-2/8		202
YSW7		F03J1	1-01						2			203
YSW7		F03N1	1-02						1			203
YSW7		F04V1	1-03									203
YSW7			1							6-0/8		203

ERROR LISTING

DE WRAP
CIV NAME

HRDWRP, V04 6/4/70
A/P PIN ORDER BAY •
NAME PIN ORDER

23-FEB-71

20:16

PAGE 1

REMARKS

LENGTH

EXCEPTIONS

RUN
NUMBER

RESET 00
RESET 00
RESET 01
RESET 01
TSS

L E0102 1-01 H
L C0101 1-02 H
L C01E1 1-01 H
L E0101 1-02 H
H C01M2 1-01 H

Q DRAW RV PG Y X Z

HND ORDER? 131
HND ORDER? 131
HND ORDER? 132
HND ORDER? 132
HND ORDER? 144