

PM

DIGITAL EQUIPMENT CORPORATION MAYNARD, MASSACHUSETTS PARTS LIST		
MADE BY <i>M. Morman</i>	CHECKED <i>R W Caunter</i>	SECTION
DATE <i>28 Feb 78</i>	DATE <i>28 Feb 78</i>	1
ENG <i>Thomas Zajac</i>	PROD	ISSUED SECT.
DATE <i>2 MAR 78</i>	DATE <i>[Signature] 3676</i>	1

[illegible][illegible]

TITLE
4 SERIAL LINE PER. CTRL.

ASSY NO.
B-DD· DLV11-J

SIZE	CODE
A	PL

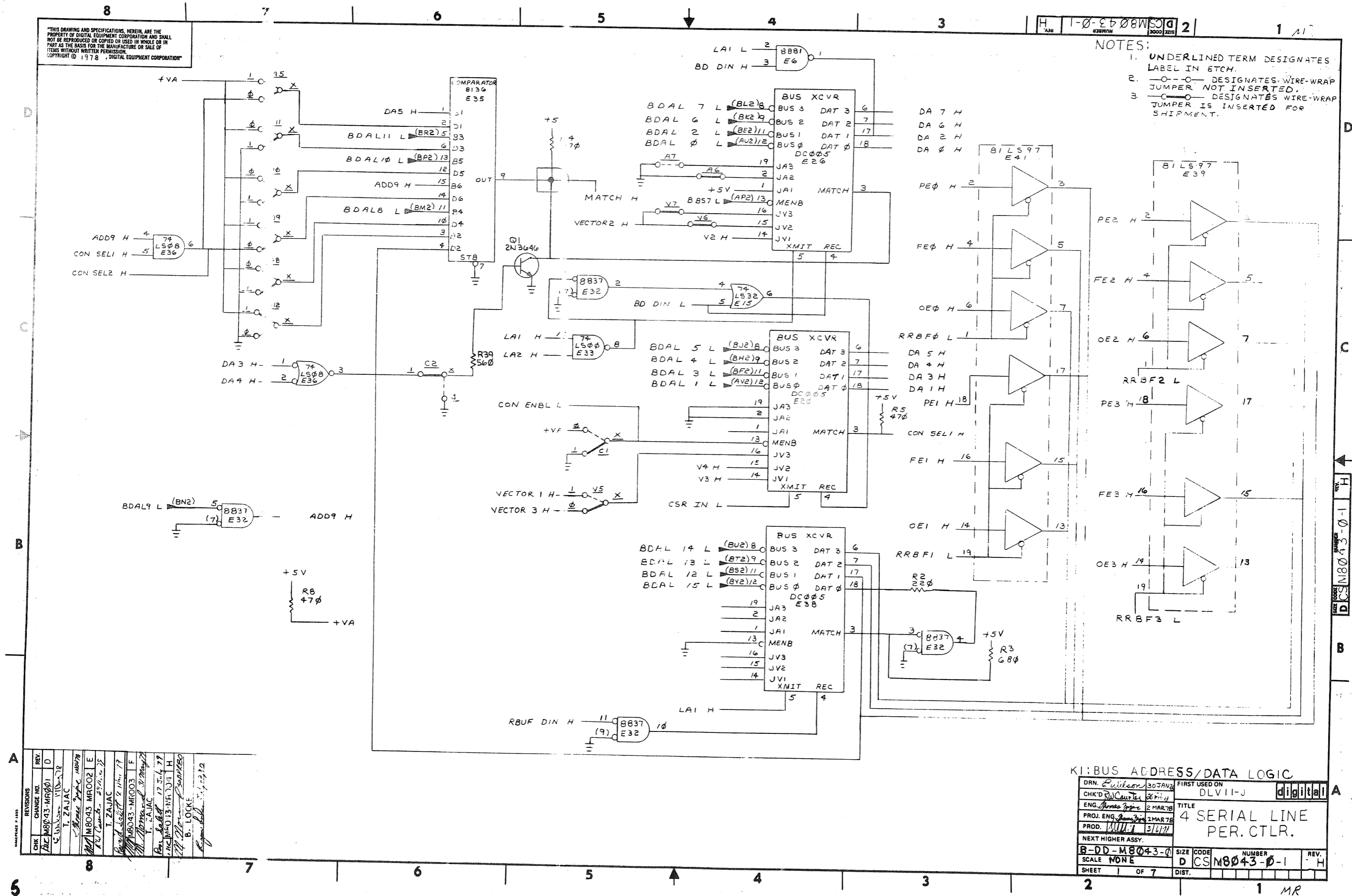
NUMBER
DLV11-J-0

REV	ECO NO.
-----	---------

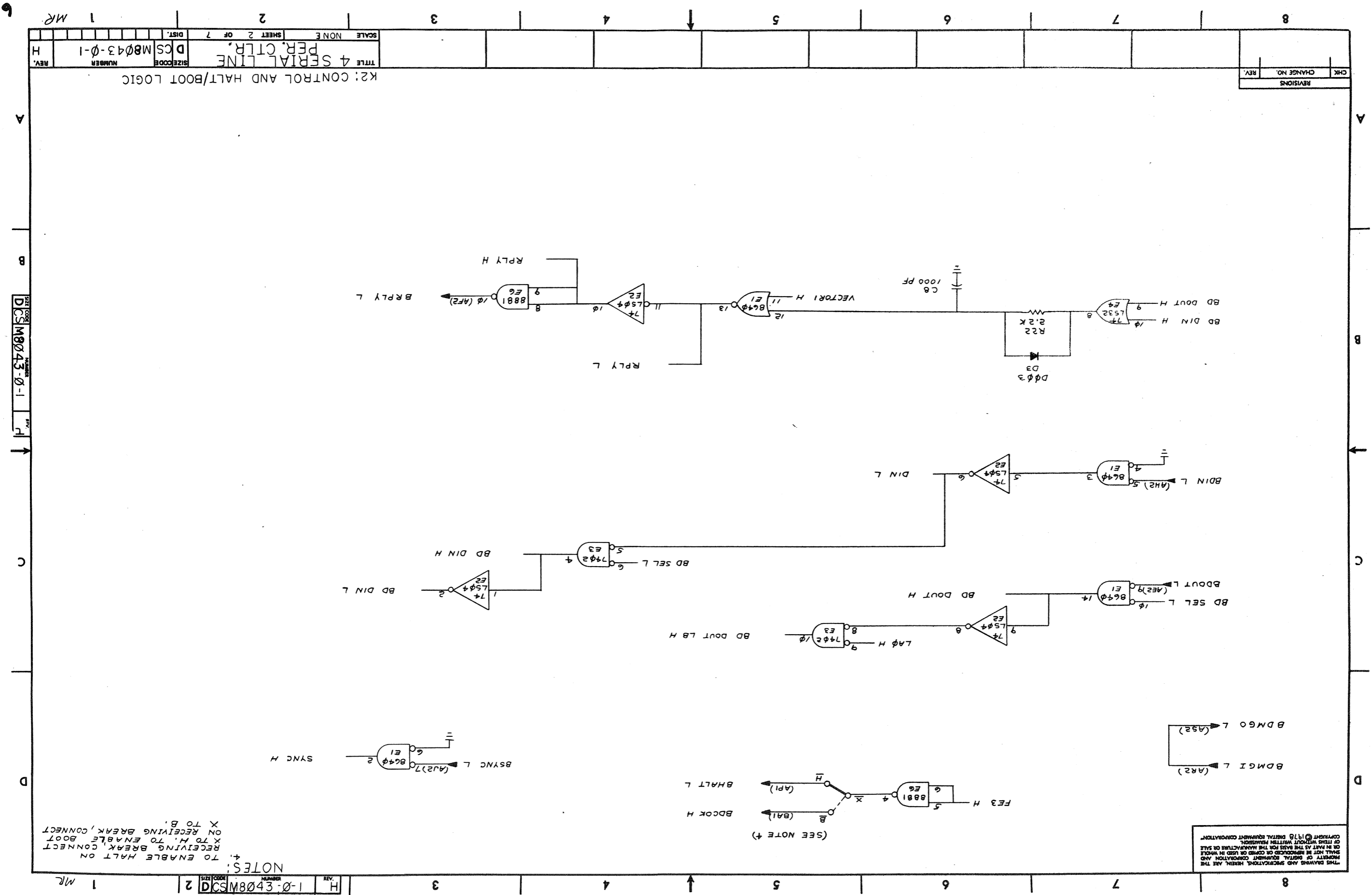
SHEET 1 OF 1

DIST

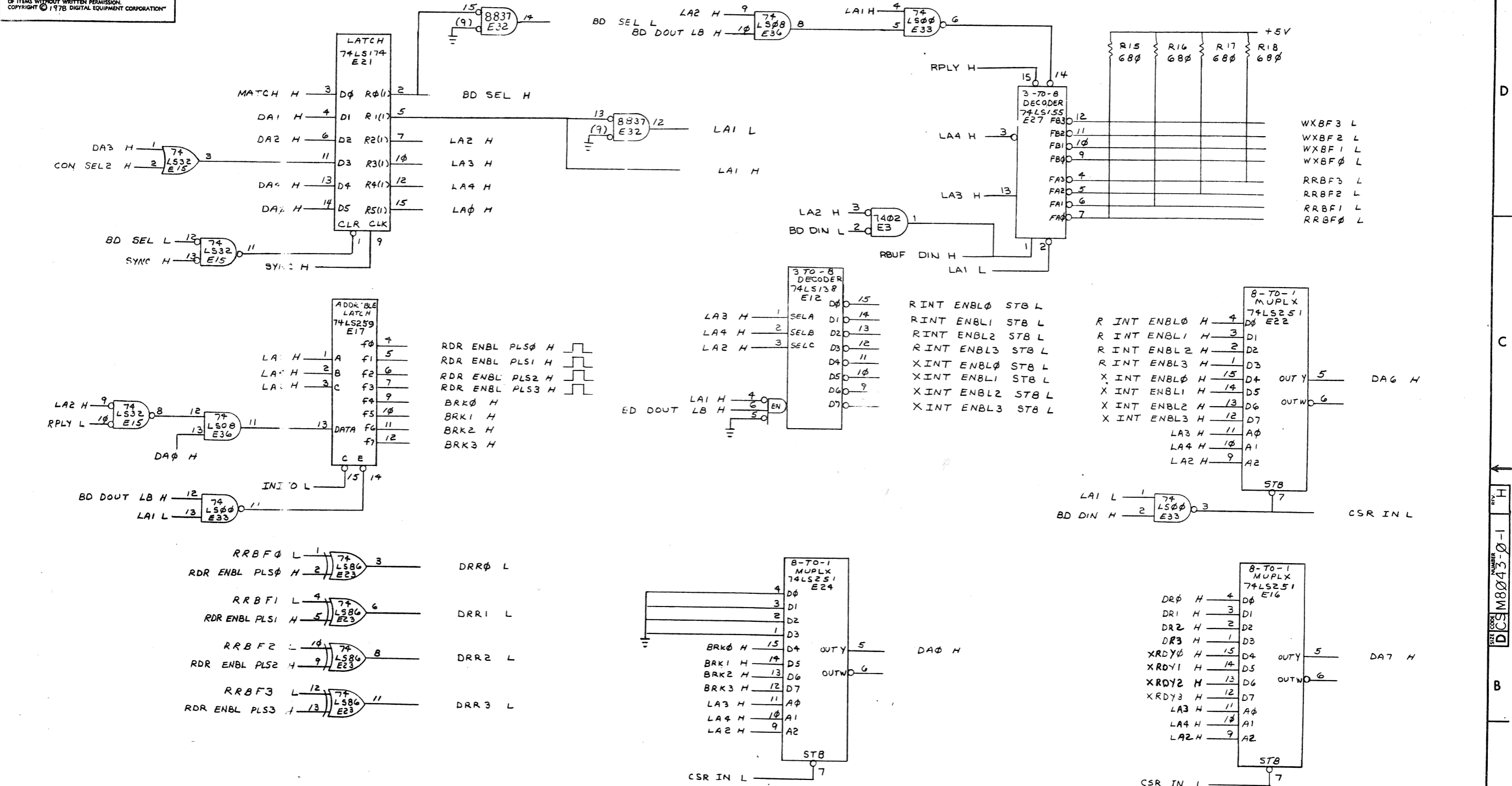
DIGITAL EQUIPMENT CORPORATION MAYNARD, MASSACHUSETTS					
PARTS LIST					
CHECKED RW Counter		DATE 28 Feb 78	PROD	DATE 2 MAR 78	ENG Thomas Joyce
SECTION 1				ISSUED SECT.	DATE 2 MAR 78
DESCRIPTION		DWG NO./PART NO.		ITEM NO.	
1	M8043	4 SERIAL LINE PER. CTRL.	1	A-PS-9905622-0-0	2
2	MP00586	BOX, FOLDING, REVERSE TUCK	1	FIELD MAINTENANCE PRINT SET	3
3	EK-DLVLT-UG-001	DVL1-J USER'S MANUAL	1	*	4
4			1	*	
QUANTITY VARIATION					



KI: BUS ADDRESS/DATA LOGIC			
DRAWN <i>Wilson</i>	30 JAN 77	FIRST USED ON	digital
CHK'D <i>RWC</i>	26 FEB 77	DLV III-J	
ENG. APPROV. <i>gpc</i>	2 MAR 78	TITLE	4 SERIAL LINE PER. CTRLR.
PROJ. ENG. <i>gpc</i>	2 MAR 78		
PROD. <i>WUL</i>	31 MAR 77		
NEXT HIGHER ASSY.			
B-DD-M8043-0		SIZE	NUMBER
SCALE NONE		D CS	M8043-0-1
SHEET 1 OF 7		DIST.	REV. H



"THIS DRAWING AND SPECIFICATIONS, HEREIN, ARE THE PROPERTY OF DIGITAL EQUIPMENT CORPORATION AND SHALL NOT BE REPRODUCED OR COPIED OR USED IN WHOLE OR IN PART AS THE BASIS FOR THE MANUFACTURE OR SALE OF ITEMS WITHOUT WRITTEN PERMISSION. COPYRIGHT © 1978 DIGITAL EQUIPMENT CORPORATION"



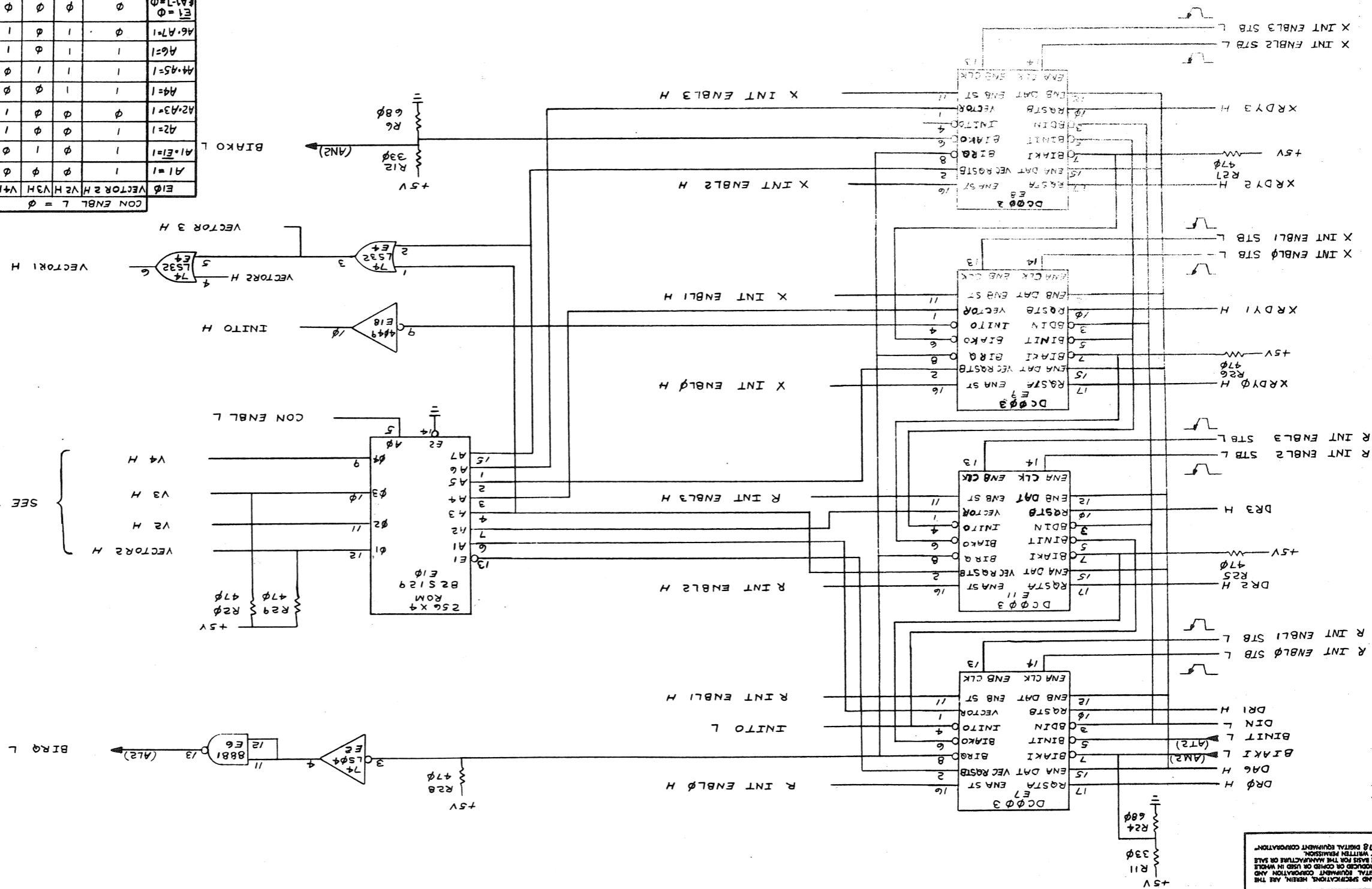
K3: ADDRESS LATCH AND REGISTER LOGIC

TITLE	SIZE CODE	NUMBER	REV.
4 SERIAL LINE PER. CTRL.	DCS	M8043-0-1	H
SCALE NONE	SHEET 3 OF 7	DIST.	

CHK	CHANGE NO.	REV.

$\exists \mathbf{E}$	$\text{CON ENBL } L = \phi$	$\text{VECTOR } \geq H$	V2 H	V3 H	V4 H	$\text{CON ENBL } L = 1$	$\text{VECTOR } \geq H$	V2 H	V3 H	V4 H
$\mathbf{A1} = 1$	1	ϕ	ϕ	ϕ	ϕ	1	ϕ	ϕ	ϕ	ϕ
$\mathbf{A1} \cdot \mathbf{E1} = 1$	1	ϕ	ϕ	ϕ	ϕ	1	ϕ	ϕ	ϕ	ϕ
$\mathbf{A2} = 1$	1	ϕ	ϕ	ϕ	1	1	ϕ	ϕ	ϕ	ϕ
$\mathbf{A2} \cdot \mathbf{A3} = 1$	ϕ	ϕ	ϕ	ϕ	1	1	ϕ	ϕ	ϕ	1
$\mathbf{A3} = 1$	1	1	ϕ	ϕ	ϕ	1	ϕ	1	1	ϕ
$\mathbf{A4} = 1$	1	1	1	ϕ	ϕ	1	1	1	1	ϕ
$\mathbf{A4} \cdot \mathbf{A5} = 1$	1	1	1	1	ϕ	1	1	1	1	ϕ
$\mathbf{A6} = 1$	1	1	1	ϕ	ϕ	1	1	1	1	1
$\mathbf{A6} \cdot \mathbf{A7} = 1$	ϕ	ϕ	1	ϕ	1	1	1	1	1	1
$\mathbf{E1} = 1$	ϕ	ϕ	1	1	ϕ	1	1	1	1	1
$\mathbf{E1} \cdot \mathbf{A7} = 1$	ϕ	ϕ	1	1	ϕ	1	1	1	1	1

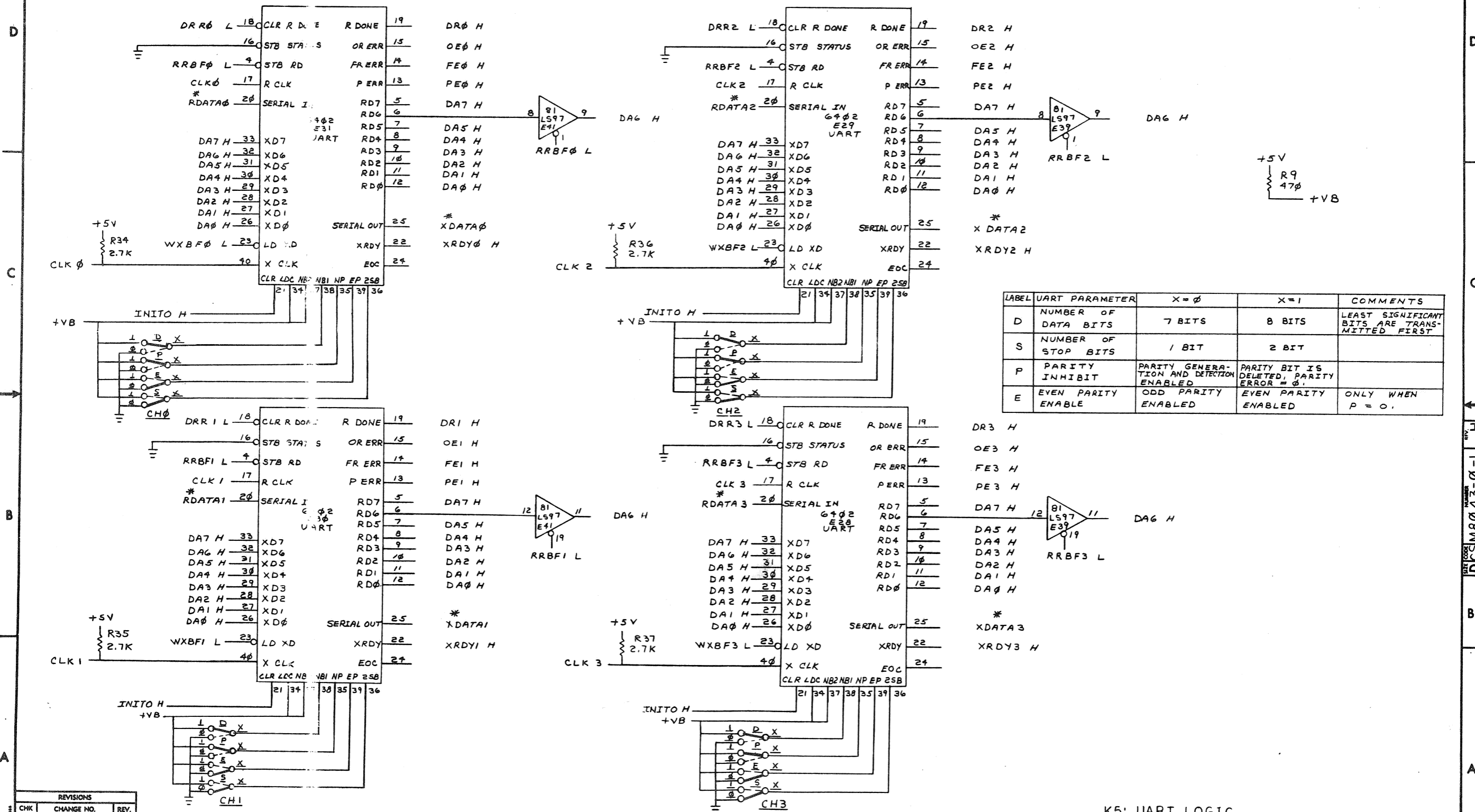
SEE TABLE BELOW



THIS DRAWING AND SPECIFICATIONS, HEREIN, ARE THE PROPERTY OF DIGITAL EQUIPMENT CORPORATION AND SHALL NOT BE REPRODUCED OR COPIED OR USED IN WHOLE OR IN PART AS THE BASIS FOR THE MANUFACTURE OR SALE OF ITEMS WITHOUT WRITTEN PERMISSION. COPYRIGHT © 1978 DIGITAL EQUIPMENT CORPORATION

NOTES:

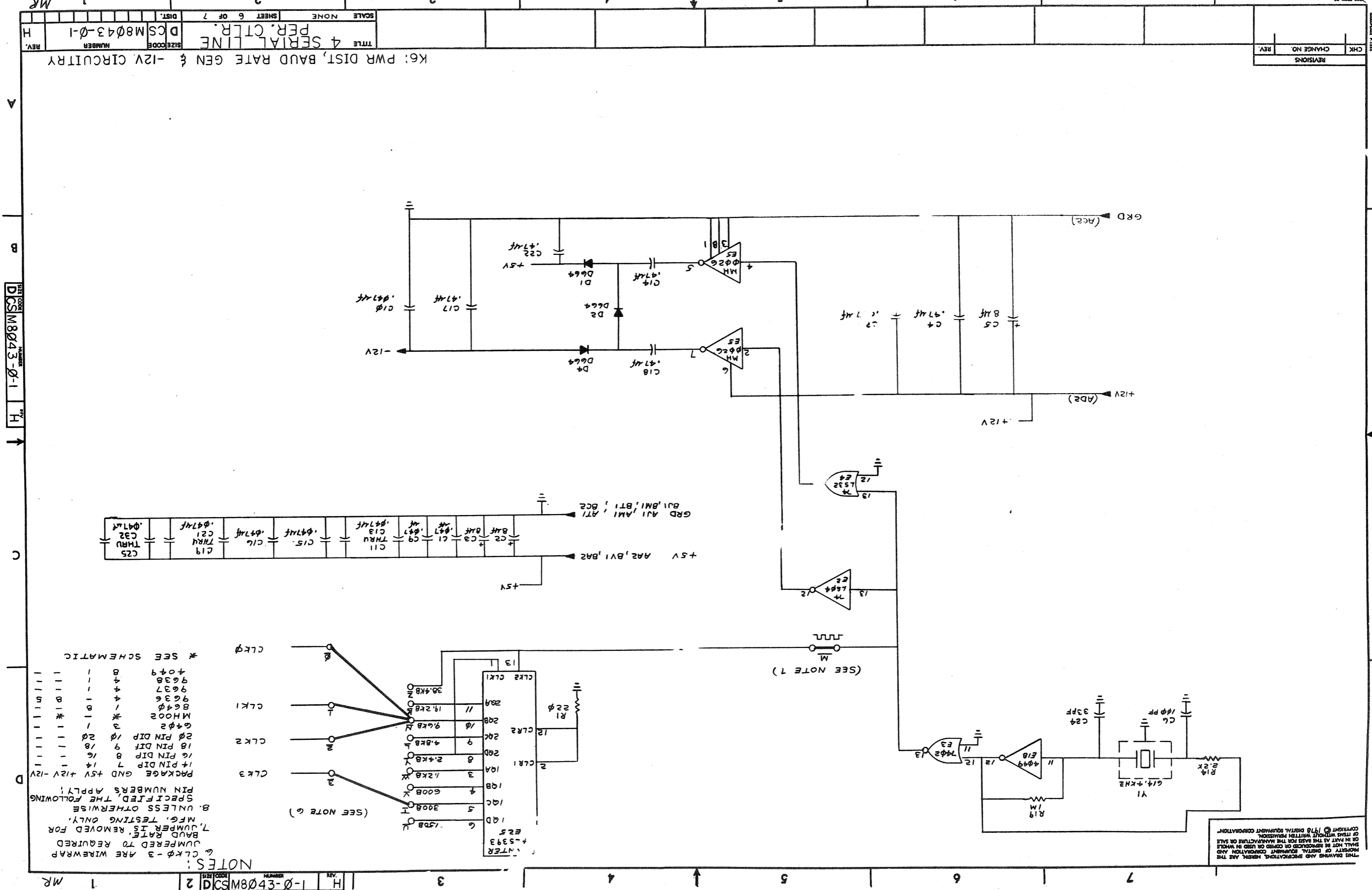
* 5. VHIGH = MARK = 1
VLOW = SPACE = 0



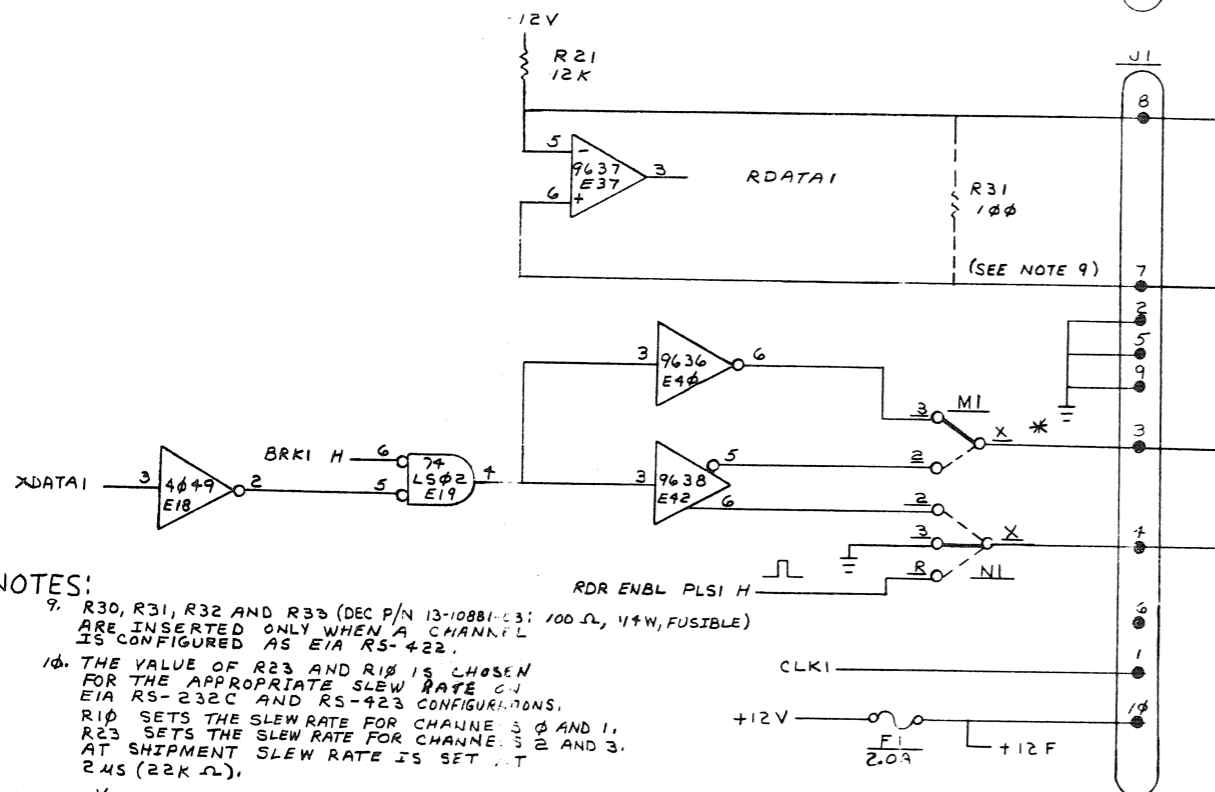
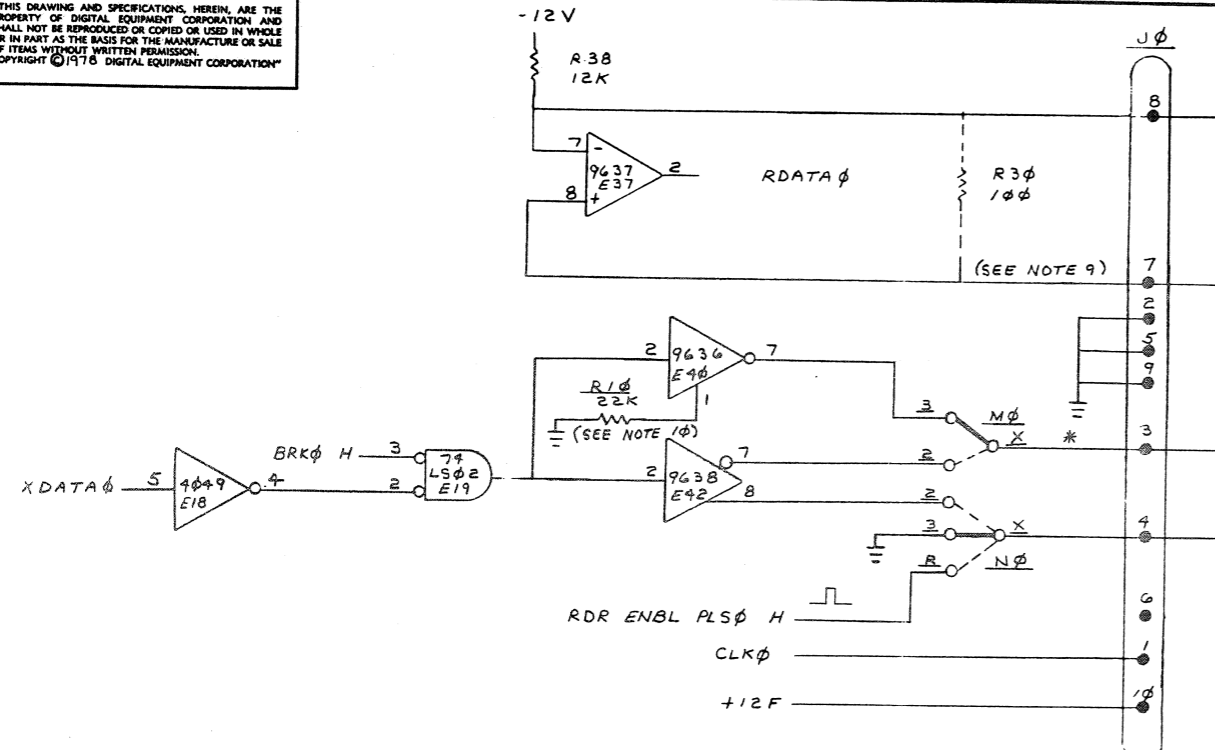
K5: UART LOGIC

TITLE		4 SERIAL LINE PER. CTRL.	SIZE CODE	NUMBER	REV.
SCALE		NONE	SHEET 5 OF 7	DIST.	H

MR



"THIS DRAWING AND SPECIFICATIONS, HEREIN, ARE THE PROPERTY OF DIGITAL EQUIPMENT CORPORATION AND SHALL NOT BE REPRODUCED OR COPIED OR USED IN WHOLE OR IN PART AS THE BASIS FOR THE MANUFACTURE OR SALE OF ITEMS WITHOUT WRITTEN PERMISSION. COPYRIGHT © 1975 DIGITAL EQUIPMENT CORPORATION"



NOTES:

9. R30, R31, R32 AND R33 (DEC P/N 13-10881-03; 100 Ω , 1/4W, FUSIBLE) ARE INSERTED ONLY WHEN A CHANNEL IS CONFIGURED AS EIA RS-422.
10. THE VALUE OF R23 AND R10 IS CHOSEN FOR THE APPROPRIATE SLEW RATE BY EIA RS-232C AND RS-422 CONFIGURATIONS. R10 SETS THE SLEW RATE FOR CHANNELS 1 AND 2. R23 SETS THE SLEW RATE FOR CHANNELS 3 AND 4. AT SHIPMENT SLEW RATE IS SET AT 245 (22K Ω).

* 11. $V_{LOW} = MARK = 1$
 $V_{HIGH} = SPACE = 0$

RCV DATA0 +

RCV DATA0 -

XMT DATA0 +

XMT DATA0 -

KEY (NO PIN)

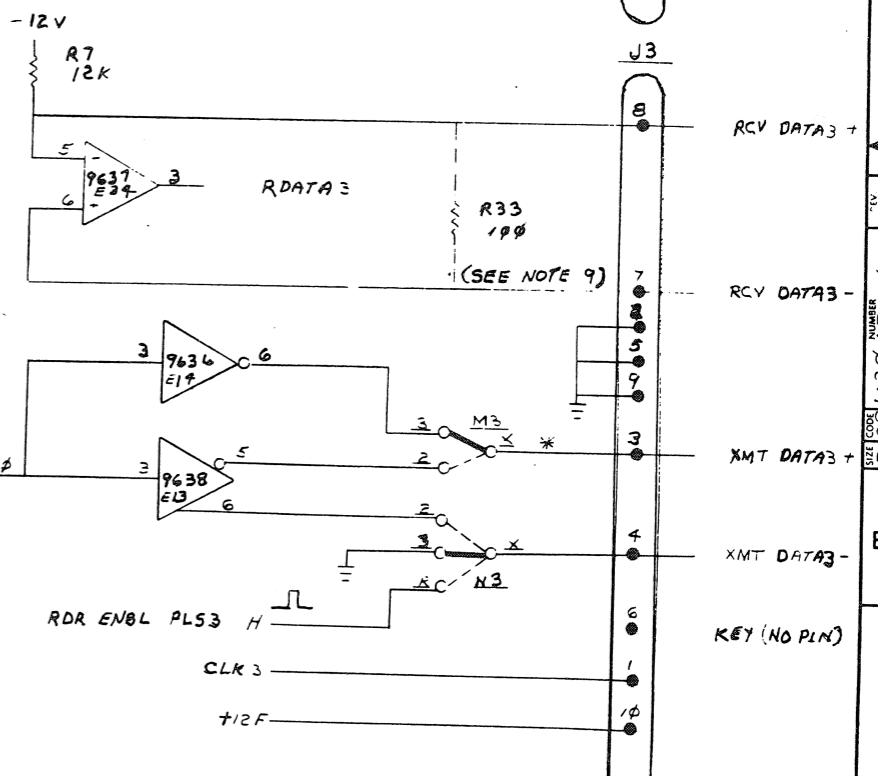
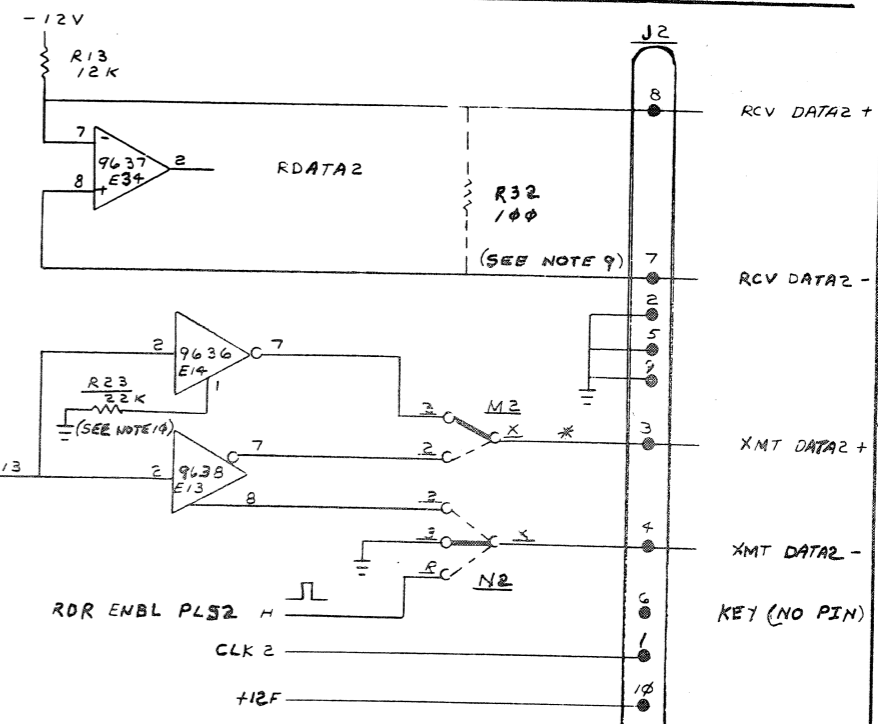
RCV DATA1 +

RCV DATA1 -

XMT DATA1 +

XMT DATA1 -

KEY (NO PIN)



K7: LINE INPUT/OUTPUT LOGIC

TITLE		SIZE CODE	NUMBER	REV.
4 SERIAL LINE PER CLR.		DCS M8043-0-1	H	
SCALE	SHEET	OF	DIST.	
NONE	7	7		

NOTES: 1. R30 THRU R33 OPTIONAL
2. CASE OF Y1 MUST BE INSULATED
FROM PCB WITH ITEM #53
3. 5 DESIGNATED WIRE WHAT
JUMPER (ITEM #56) INSULATED
FOR SHIPMENT

CHARGE NO	REV
MP MB043 MB043	E
<p> <i>6/11/78 15:25:78</i> T. ZAJAC <i>Feb 26 1978 17 51:79</i> MB043-MB4 F <i>Mr. Marnard 3944 RD</i> BRYAN LOCKE <i>Cover to the yard, 80</i> <i>0</i> </p>	

NOTES:
1. PLACEMENT OF Q1 FOR TO 92 (LEADS IN-LINE)

FOR TO 18 PKG (METAL CAN)
TO-18

FOR TO-105/106 PKG (ROUND TOP PLASTIC)
TO-105/106

FOR ON UA
TO-92

BEND MIDDLE LEAD OUT

FOR ON UA
TO-92

FOR ON UA
TO-92

NOTE: DIFFERENCE

VS

△, PAT

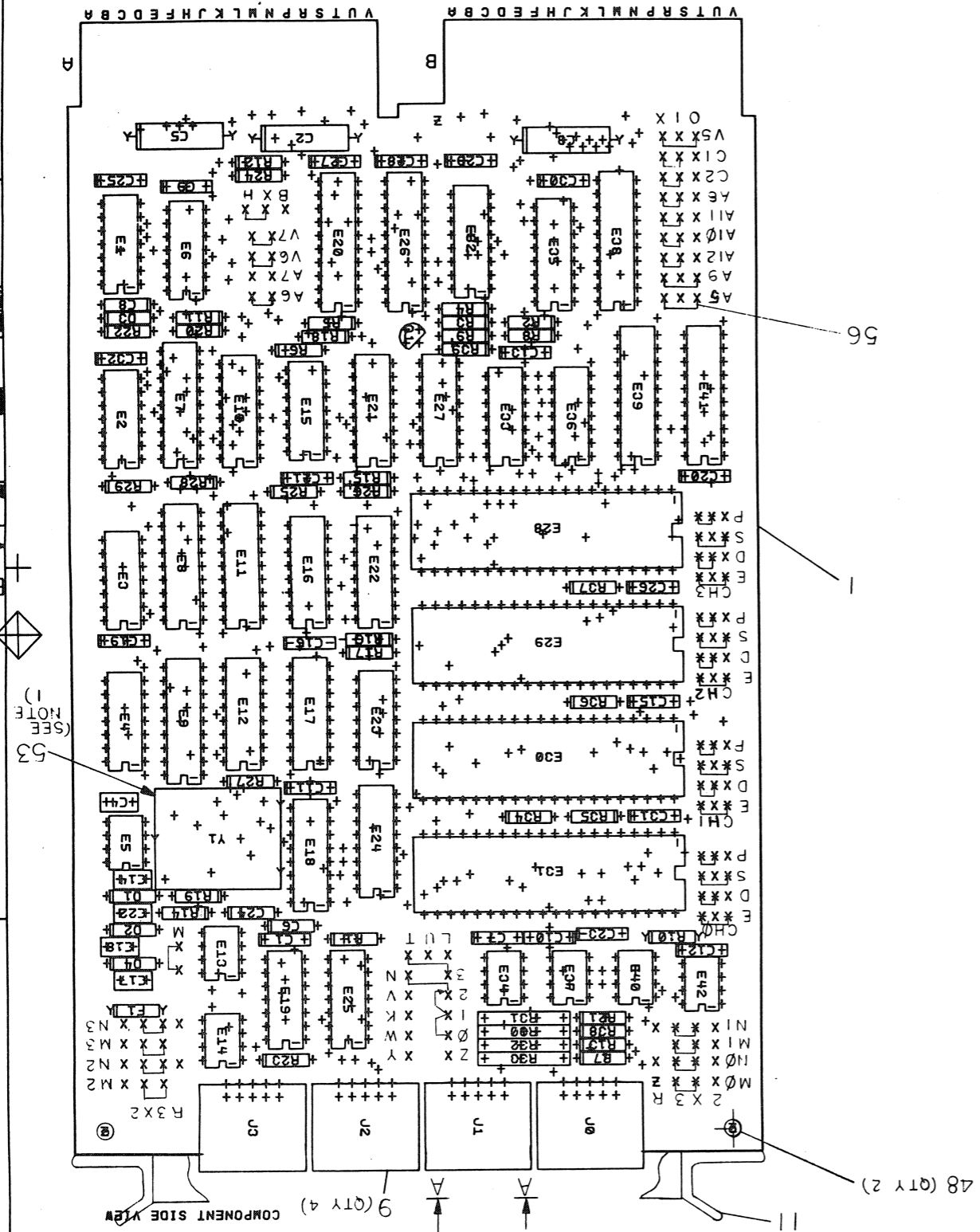
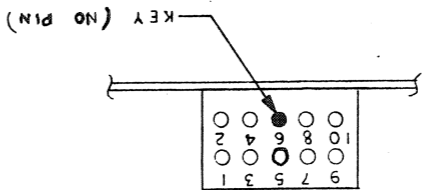
LEAD IN TRIANGULAR PATTERN

△ PAT

FLAT

FLAT

NOTES:
1. PLACEMENT OF Q1 FOR 10 92(LEADS
DETAIL A-A 4 PLACES



48 (QTY 2)

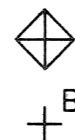
STY	CO	PR	REV
D	UA	M 8Ø43-Ø-Ø	F

1
A12

082006T#SW T

THIS DRAWING AND SPECIFICATIONS, HEREIN, ARE THE PROPERTY OF DIGITAL EQUIPMENT CORPORATION AND SHALL NOT BE REPRODUCED OR COPIED OR USED IN WHOLE OR IN PART ON THE BASIS FOR THE MANUFACTURE OR SALE OF ITEMS WITHOUT WRITTEN PERMISSION.

COPYRIGHT © 1978 DIGITAL EQUIPMENT CORPORATION



NOTES:

CHX CHANGE NO. REV.

SIGNATURES		DATE		digital			
DRN.		CHK'D.		TITLE 4 SERIAL LINE PER. CTLR			
ENG.		PROJ. ENG.					
PROD.							
SCALE 2/1		SIZE CODE					
SHT. 2 OF 3		d UA		M8043-0-0		F	
NEXT HIGHER ASSY. B-DD-M8043-0							

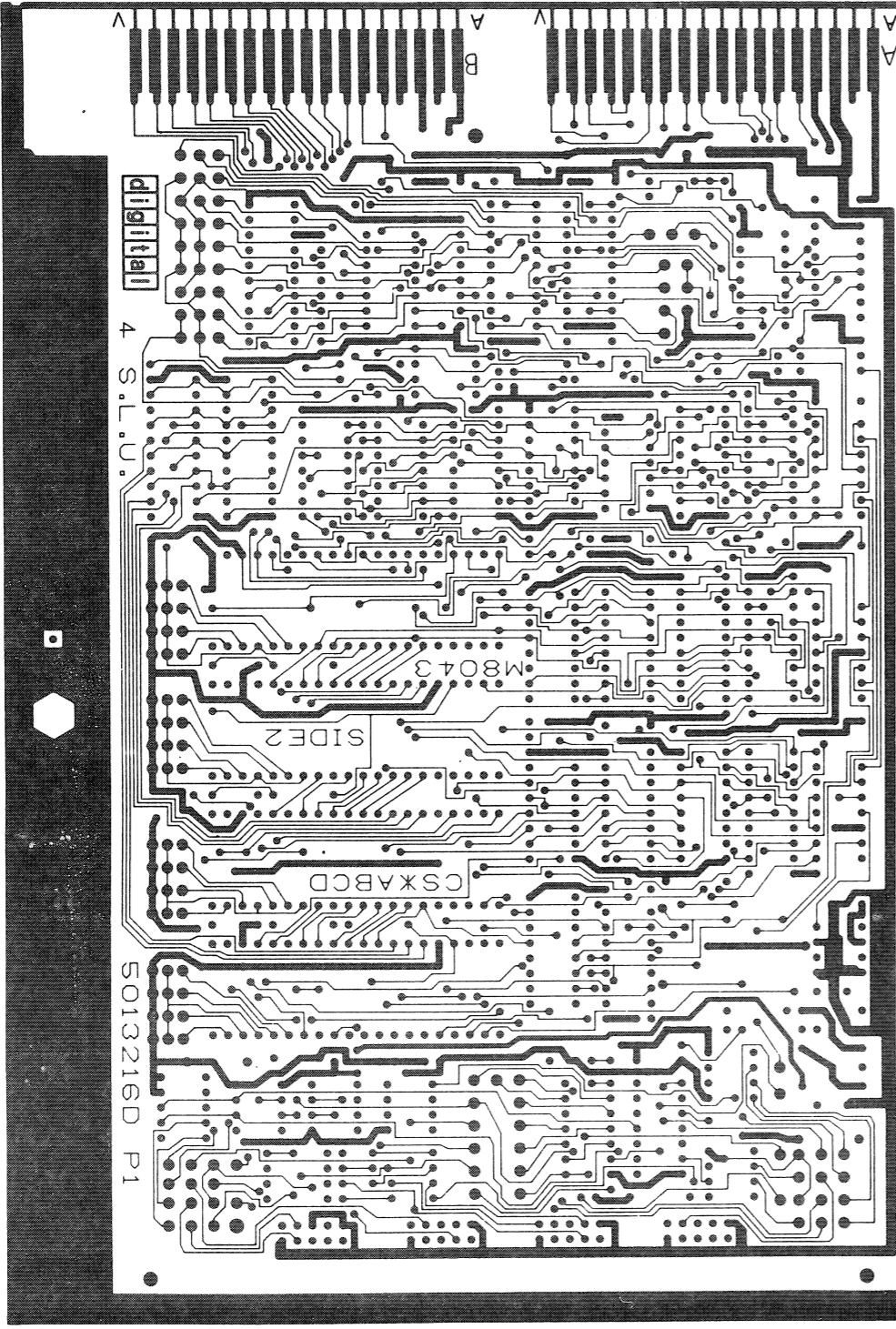
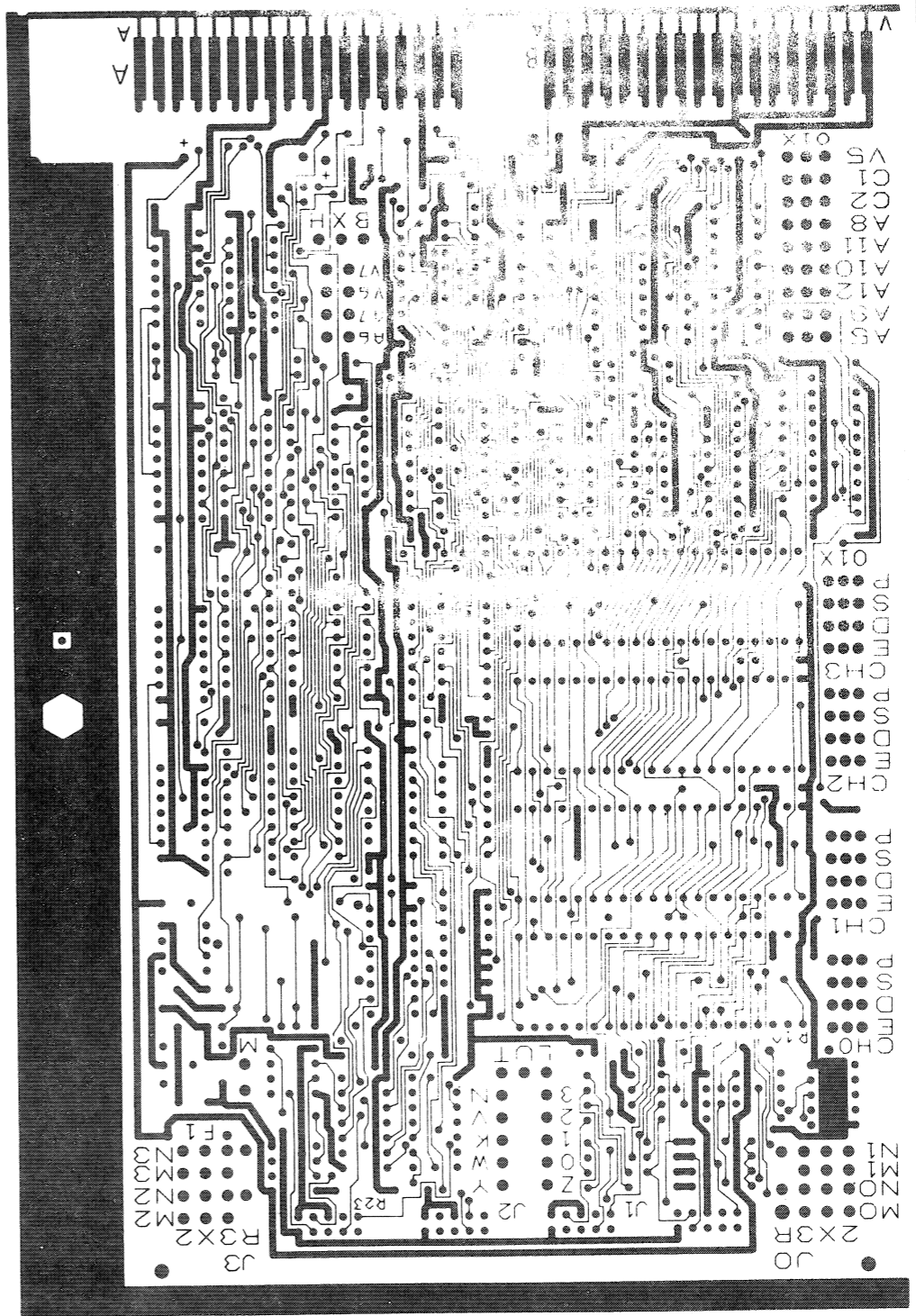
MR 1 MS#

CHK	CHANGE NO	REV

REVISIONS

DEC FORM NO 137

THIS DRAWING AND SPECIFICATIONS HEREIN ARE THE PROPERTY OF DIGITAL EQUIPMENT CORPORATION AND SHALL NOT BE REPRODUCED OR COPIED OR USED IN WHOLE OR IN PART AS THE BASIS FOR THE MANUFACTURE OR SALE OF ITEMS WITHOUT WRITTEN PERMISSION. COPYRIGHT © 1975 DIGITAL EQUIPMENT CORPORATION.



TITLE	4 SERIAL LINE
PER. CTRL	
SIZE CODE	DUA
NUMBER	M8043-0-0
REV.	F

SCALE 2 1/1 SHEET 3 OF 3 DIST.

1 MR

A B C D

DUA M8043-0-0 F

REV.	NUMBER	SIZE CODE
F	0-0-408W	DUA
2		

MR 1

M8043 S013216D P1