

"THIS DRAWING AND SPECIFICATIONS, HEREIN, ARE THE PROPERTY OF DIGITAL EQUIPMENT CORPORATION AND SHALL NOT BE REPRODUCED OR COPIED OR USED IN WHOLE OR IN PART AS THE BASIS FOR THE MANUFACTURE OR SALE OF ITEMS WITHOUT WRITTEN PERMISSION. COPYRIGHT © 1977, DIGITAL EQUIPMENT CORPORATION."

B-TC-DLV11-F-1	ASYN. LINE INTERFACE (TC)
A-PL-DLV11-F-Ø	ASYN. LINE INTERFACE (PL)
D-UA-M8Ø28-Ø-Ø	DLV11-F ASYN. LINE INTERFACE, M8Ø28
B-PL-M8Ø28-Ø-Ø	DLV11-F ASYN. LINE INTERFACE, M8Ø28
D-CS-M8Ø28-Ø-1	DLV11-F ASYN. LINE INTERFACE, M8Ø28
A-PL-DLV11-F	SHIPPING LIST, DLV11-F
B-UA-BCØ5M-Ø-Ø	CABLE ASSEMBLY, BCØ5M
D-UA-BCØ3L-Ø-Ø	CABLE ASSEMBLY, BCØ3L

DLVII-F

Field Maintenance Print Set

Digital Equipment Corporation

PRINT SET ORDER NO.
MP00461

EN-01124-16-N676-(327)

REWORK INSTRUCTIONS:

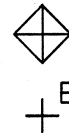
ECO #1

ETCH CUTS:

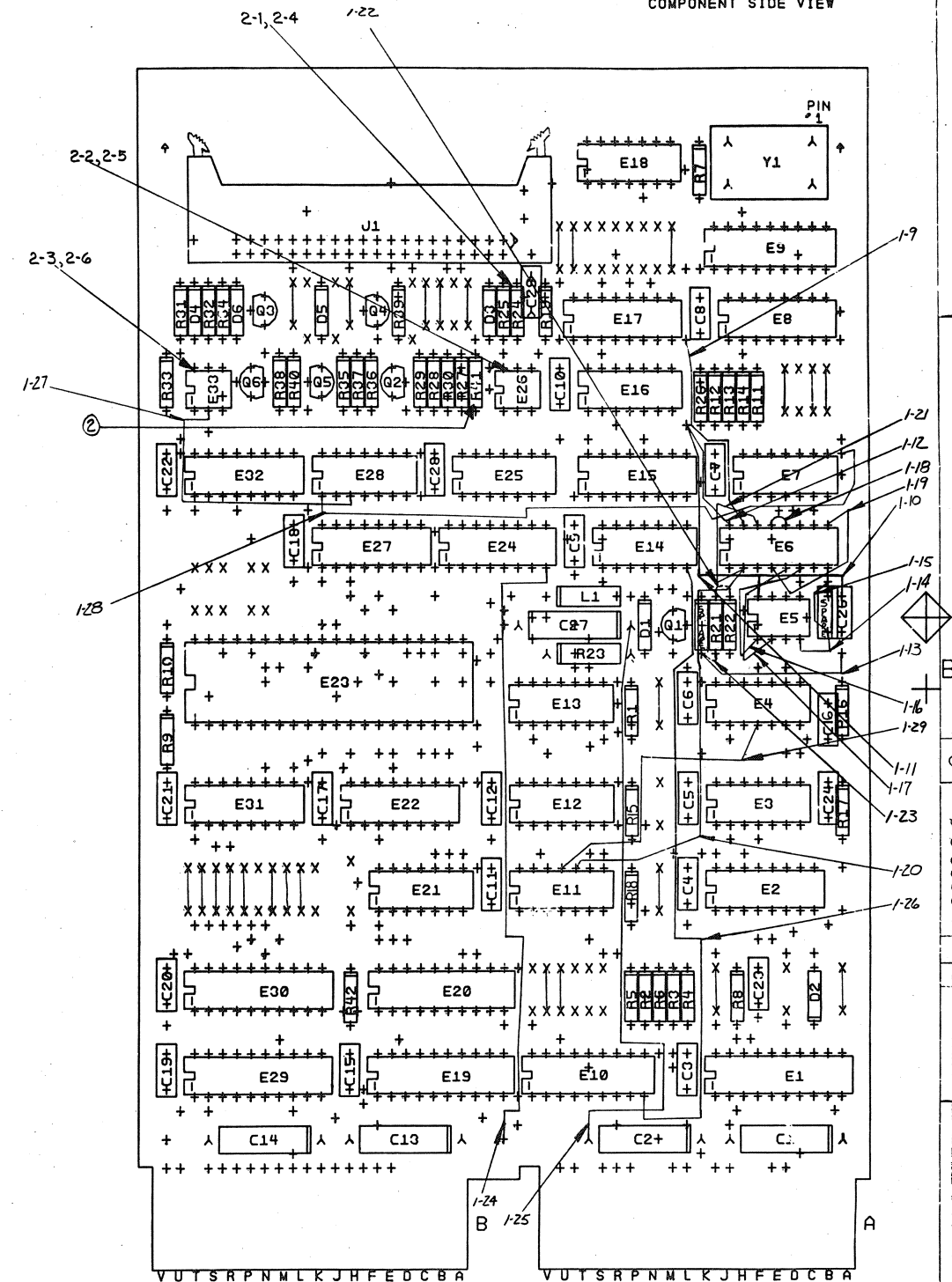
- 1-1 ES-5, SIDE 2
- 1-2 ES-6, SIDE 1 (UNDER ES)
- 1-3 ES-6, SIDE 2 (RIGHT SIDE OF PIN)
- 1-4 ES-8, SIDE 1 (UNDER ES)
- 1-5 ES-9, SIDE 2 (2 PLACES)
- 1-6 ES-1, SIDE 2
- 1-7 BOTTOM OF R21, SIDE 2 (LEFT SIDE)
- 1-8 E33-2, SIDE 2
- 1-9 WIRE ADDS (SIDE 1 UNLESS OTHERWISE NOTED)
- 1-10 FEED THRU AT RIGHT OF E17-B TO E6-15.
- 1-11 TOP OF C26 TO ES-8.
- 1-12 ES-8 TO FEED THROUGH BELOW E16-7.
- 1-13 E6-16 TO FEED THROUGH BELOW E16-7.
- 1-14 FEED THROUGH AT LEFT OF BOTTOM OF R21 TO FEED THROUGH BELOW C26.
- 1-15 FEED THROUGH AT RIGHT OF ES-9 TO ES-9.
- 1-16 FEED THROUGH AT RIGHT OF ES-9 TO E6-8.
- 1-17 ES-1 TO E6-6.
- 1-18 ES-2 TO E6-5.
- 1-19 E6-13 TO E6-12.
- 1-20 E6-9 TO E6-4.
- 1-21 E6-2 TO E11-10.
- 1-22 E6-14 TO E6-2.
- 1-23 TOP OF R21 TO TOP OF R22 (SEE NOTE 3)
- 1-24 BOTTOM OF R21 TO FEED THROUGH AT LEFT OF BOTTOM OF R21 (SEE NOTE 3).
- 1-25 FEED THROUGH BELOW E19-10 TO E24-8.
- 1-26 ("") NEG. SIDE OF C2 TO ("") POS. OF C27.
- 1-27 E10-9 TO E14-7.
- 1-28 E33-2 TO E28-3.
- 1-29 E28-1 TO FEED THROUGH AT RIGHT OF E7-8.
- 1-30 E4-4 TO E11-11

ECO #2

- COMPONENT DELETES SIDE 1:
- 2-1. DELETE R24 (PN 1303177)
- 2-2. DELETE I.C. E26 (PN 1911998-01)
- 2-3. DELETE I.C. E33 (PN 1911998-01)
- COMPONENT ADDS SIDE 1:
- 2-4. ADD R24 (PN 1300365)
- 2-5. ADD E26 (PN 1911998-02)
- 2-6. ADD E33 (PN 1911998-02)



COMPONENT SIDE VIEW



NOTES:

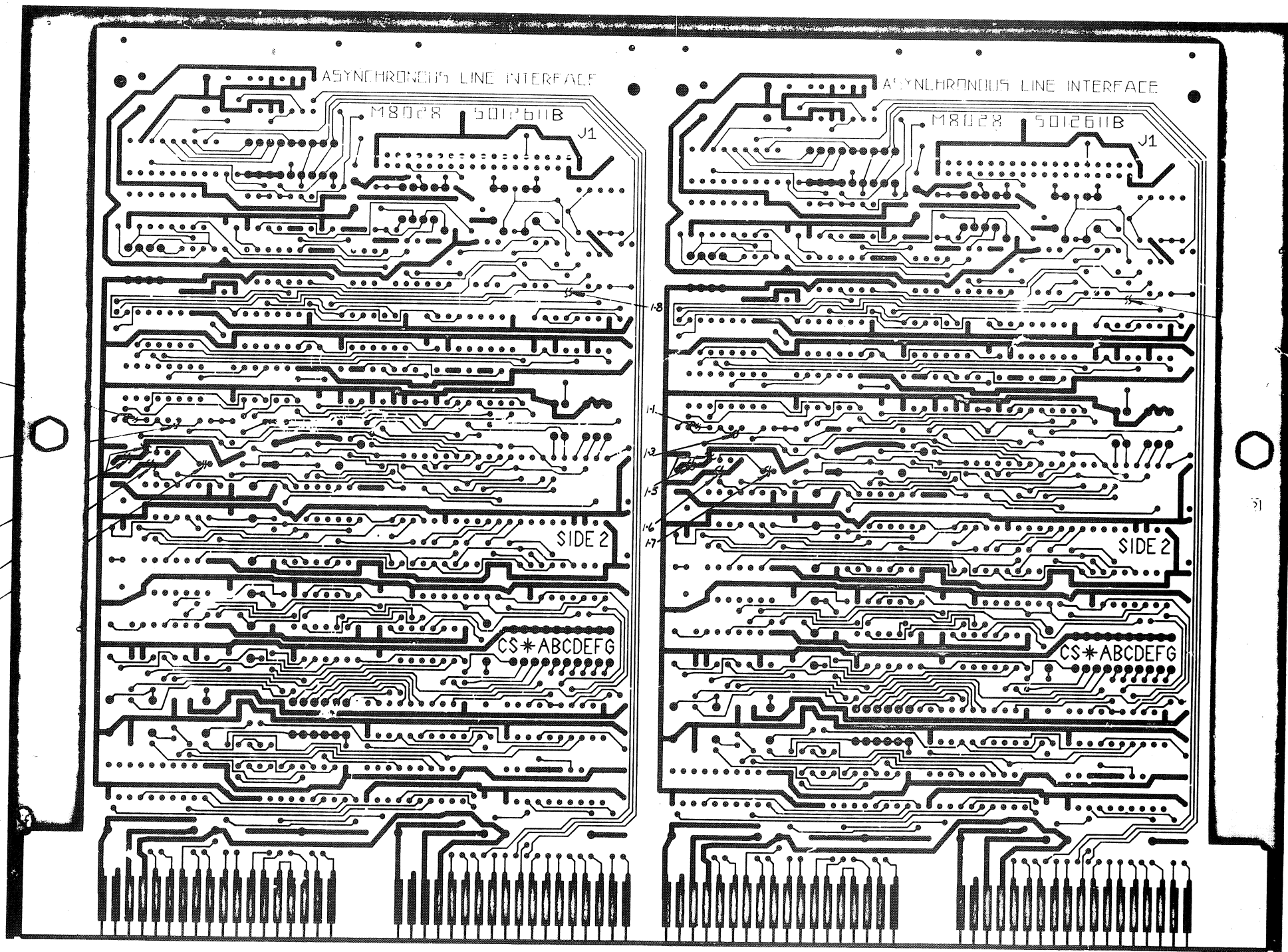
- 1. 8 HOLES .0465 (+.000-.0045) MAYNARD ONLY
- 2. R41 NOT INSERTED
- 3. THIS CONNECTION IS MADE ON SIDE 2 BY BENDING THE RESISTER LEAD OVER TO THE ADJACENT FEED THROUGH.

CHK	CHANGE	NO	REV
1A	M8028-1	B	
1B	M8028-1	B	
1C	M8028-1	B	
1D	M8028-1	B	
1E	M8028-1	B	
1F	M8028-1	B	
1G	M8028-1	B	
1H	M8028-1	B	
1I	M8028-1	B	
1J	M8028-1	B	
1K	M8028-1	B	
1L	M8028-1	B	
1M	M8028-1	B	
1N	M8028-1	B	
1O	M8028-1	B	
1P	M8028-1	B	
1Q	M8028-1	B	
1R	M8028-1	B	
1S	M8028-1	B	
1T	M8028-1	B	
1U	M8028-1	B	
1V	M8028-1	B	
1W	M8028-1	B	
1X	M8028-1	B	
1Y	M8028-1	B	
1Z	M8028-1	B	

ETCH REV. B
P.C. DESIGN DATA BASE REV. B

SIGNATURES	DATE	TITLE
DRN. FRANK SMART	8-1-77	digital
CHK'D. FRANK SMART	8-1-77	
ENG. M. B. Smart	8-21-77	
PROJ. ENG. M. B. Smart	8-21-77	
PROD. M. B. Smart	8-21-77	
SCALE 1/2" = 1"		
SHT. 1 OF 3		
NEXT HIGHER ASSY. B-DD-M8028-0-0		
SIZE CODE	NUMBER	REV
UA	M8028-0-0	C

ML



1-1
1-3
1-5
1-6
1-7

1-8
1-1
1-2
1-5
1-6
1-7

1-8

REVISIONS		
NO.	CHANGE	REV.

8

7

6

5

4

3

2

1

TITLE		SIZE CODE		NUMBER		REV.
A L I		D UA		M8028-0-0		C
SCALE	2 - 1	SHEET	2	OF	3	DIST.

LINE	ITEM	DOCUMENT NO.	PART NO.	DESCRIPTION	QTY	REFERENCE DESIGNATORS
1	1		1912729-00	DC 004 PROTOCOL, REG. SELECTOR	1	E1
2	2		1912730-00	DC 003 INTERRUPT, 2 CIRCUIT	1	E10
3	3		1913040-00	DC 005 TRANSCEIVER 4BIT	4	E19, E20, E29, E30
4	4		1811660-02	OSCILLATOR, CRYSTAL, 5.0688MHZ, 14PIN DIP	1	Y1
5	5		1912805-00	LS08 AND GATE-QUAD 2IN, POSITIVE	2	E4, E13
6	6		1912803-00	LS04 INVERTER GATE-HEX 1IN	1	E11
7	7		1912799-00	LS00 NAND-GATE-QUAD 2IN, POSITIVE	1	E3
8	8		1911579-00	8641 TRANSCEIVER, BUS, QUAD, UNIBUS	1	E2
9	9		2112623-00	DUAL BAUD RATE GEN/PROG DIVIDER, MOS 18P	1	E9
10	10		1912867-00	LS298 MUX 1 OF 4, 2IN W/STORAGE	1	E8
11	11	(SEE NOTE 66)	1913414-00	LS14 INVERTER GATE-HEX SCHMITT TRIG	1	E16
12	12		1912801-00	DEC LS02 NOR GATE-QUAD 2IN	1	E14
13	13		1912813-00	LS27 NOR GATE-TRIPLE 3IN	1	E7
14	14		1912816-00	LS32 OR GATE-QUAD 2IN, POSITIVE	1	E12
15	15		1912824-00	LS74 FF-D DUAL, EDGE TRIGGER, POS	2	E25, E21
16	16		1912845-00	LS153 MUX 1 OF 4 (DUAL) & DATA SEL	1	E17
17	17		1911527-00	8097 BUFFER GATE-HEX 2INPUT TRI-STA	2	E22, E31
18	18		1912647-00	LS257 MUX 1 OF 2 (QUAD) TRI-STA	3	E24, E27, E32
19	19		1912849-00	LS161 COUNTER, SYNCHR, 4BIT BINARY	1	E15
20	20		1910322-00	DEC 1488L DRIVER, LINE, QUAD, EIA RS-232C	1	E18
21	21		1910323-00	DEC 1489L RECEIVER, LINE, QUAD, EIA RS-232	1	E28
22	22		2111450-00	UART 40K BAUD VARIATION OF 19-10459-00	1	E23
23	23		1914432-00	75454 DRIVER, PERIPH, DUAL, NOR	1	E5
24	24		1911998-02	4N26-20PTG COUPLED ISLTR 6 P	2	E26, E33
25	25		1001765-00	5000.0 MMF 100V 20% Z5U DISC#	1	C29
26	26		1000024-00	470.0 MMF 100V 5%200PPM DM158 (10-00	3	C23, C24, C28
27	27		1001610-01	.01 MFD 100V OR 50V Z5U DISC/800PF MIN	18	C3-C12, C15, C17-C22, C26
28	28		1012084-01	8 MFD 25V 6% 30D AL EL (10-12	4	C1, C2, C13, C14
29	29		1005306-00	6.8MFD 35V 10% 150D S.TA (10-00	1	C27
30	30		1105275-00	D 672 TR= 15NS PIV= 60V SP	4	D1, D3-D5

REVISION HISTORY			VARIATIONS FOR THIS ASSY.		
CHK	ECO NO	REV	FIRST USED ON:		
B.F	00002	C	00		
			MADE BY: F SMART	DATE: 26-MAY-78	DIGITAL EQUIPMENT CORPORATION MAYNARD, MASSACHUSETTS
			CHECKED: F SMART	DATE: 26-MAY-78	TITLE PARTS LIST
			DSN.ENG.: M MICHAUD	DATE: 26-MAY-78	ASYNCHRONOUS LINE INTERFACE
			PROD.: KM	DATE: 26-MAY-78	SIZE CODE DOCUMENT NUMBER REV
			RESP.ENG.: M MICHAUD	DATE: 26-MAY-78	K FL M8028-0-DBP C
				ASSY.NO.: D-UA-M8028-0-0	EDIT# 4

*THIS DRAWING AND SPECIFICATIONS HEREIN, ARE THE PROPERTY OF DIGITAL EQUIPMENT CORPORATION AND SHALL NOT BE REPRODUCED OR COPIED OR USED IN WHOLE OR IN PART AS THE BASIS FOR THE MANUFACTURE OR SALE OF ITEMS WITHOUT WRITTEN PERMISSION.
COPYRIGHT 1978, DIGITAL EQUIPMENT CORPORATION *

LINE	ITEM	DOCUMENT NO.	PART NO.	DESCRIPTION	QTY	REFERENCE DESIGNATORS
31	31		1105610-00	MCL1301 CL01MA FROM10-80V	1	D6
32	32	(SEE NOTE 68)	1109502-01	Z 6214 VZ= 12.0 2% 1W	1	D2
33	33		1300479-00	10 K 1/4W 5% CC (13-00	9	R1,R11-R15,R18,R19,R42
34	34		1300365-00	1 K 1/4W 5% CC (13-00	7	R7,R8,R16,R35,R36,R38,R24
35	35		1300295-00	330 1/4W 5% CC (13-00	3	R2,R4,R5
36	36		1300229-00	100 1/4W 5% CC (13-00	1	R21
37	37		1301424-00	680 1/4W 5% CC (13-00	3	R3,R6,R29
38	38		1303177-00	2.4 K 1/4W 5% CC (13-00	2	R9,R10
39	39		1300391-00	1.5 K 1/4W 5% CC (13-00	1	R17
40	40		1915249-00	74390 COUNTER,DECADE-DUAL,4BIT	1	E6
41	41		1300316-00	470 1/4W 5% CC (13-00	1	R22
42	42		1312384-05	82 1W 5%	1	R23
43	43		1300271-00	220 1/4W 5% CC (13-00	1	R25
44	44		1301972-00	270 1/4W 5% CC (13-00	1	R26
45	45		1301322-00	180 1/4W 5% CC (13-00	2	R27,R33
46	46		1300316-00	470 1/4W 5% CC (13-00	1	R28
47	47		1300219-00	68 1/4W 5% CC (13-00	1	R30
48	48		1300202-00	47 1/4W 5% CC (13-00	4	R31,R32,R39,R40
49	49		1301327-00	68 K 1/4W 5% CC (13-00	1	R34
50	50		1300432-00	3 K 1/4W 5% CC (13-00	1	R37
51	51		1510706-00	XA 55 PNP 500MW SI 60 50 P	3	Q2-Q4
52	52		1515018-00	2N 2905A PNP 600MW SI 40 100	1	Q1
53	53		1510705-00	XA 05 NPN 500MW SI 60 50 P	2	Q5,Q6
54	54		1602723-02	270 UH 10% 260MA #WEE270	1	L1
55	55		1209941-02	HEADER 100 40POS RT ANGLE \$	1	J1
56	56	(SEE NOTE 67)	9009149-01	PIN, STAKING, P.C. BOARD .025 SQUARE	100	
57	57		9008337-06	HANDLE, FLIP CHIP, MAGENTA	1	
58	58		1209941-04	HEADER RT ANGLE,RIGHT LATCH FOR	1	
59	59		1209941-03	HEADER RT ANGLE LEFT LATCH FOR	1	
60	60		1010279-00	.47 MFD 25V 20% 2C023 CER.\$	1	C16
61	61		9009781-00	SPACER, MODULE, MAGENTA	1	
62	62		9105740-55	WIRE(WRAP)30AWG UL1423 (91-00 A/R		
63	63	D-MD-5012611-0-0	5012611-00	M8028	1	
64	64		9007201-00	TRANSIPADS #10253	1	
65	65		9006732-00	EYELET, ROLLED FLANGE, .121 OD X .219 LG	4	

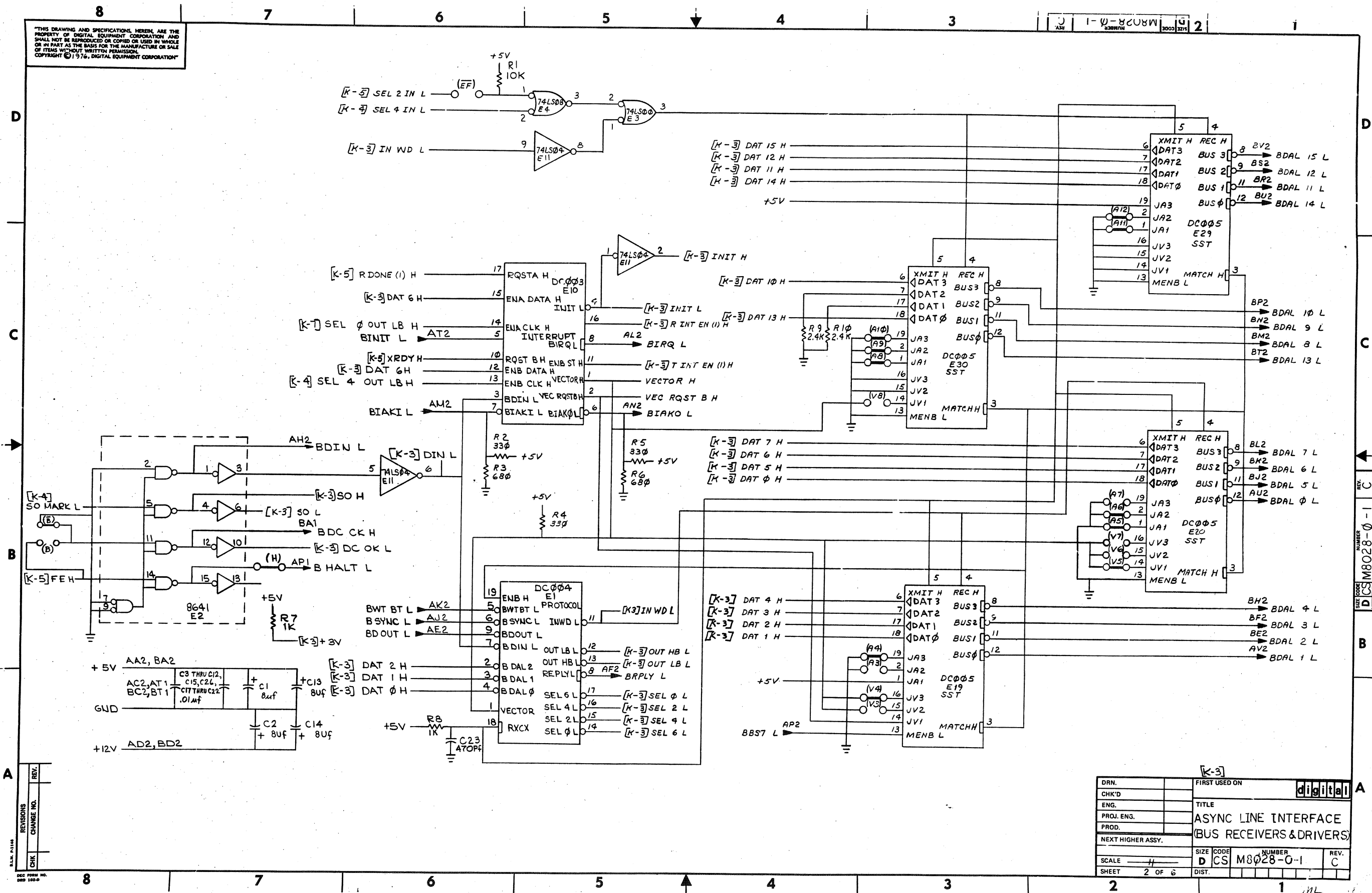
66 NOTE: IF 1913414 IS NOT AVAILABLE, USE 1911324(7414)

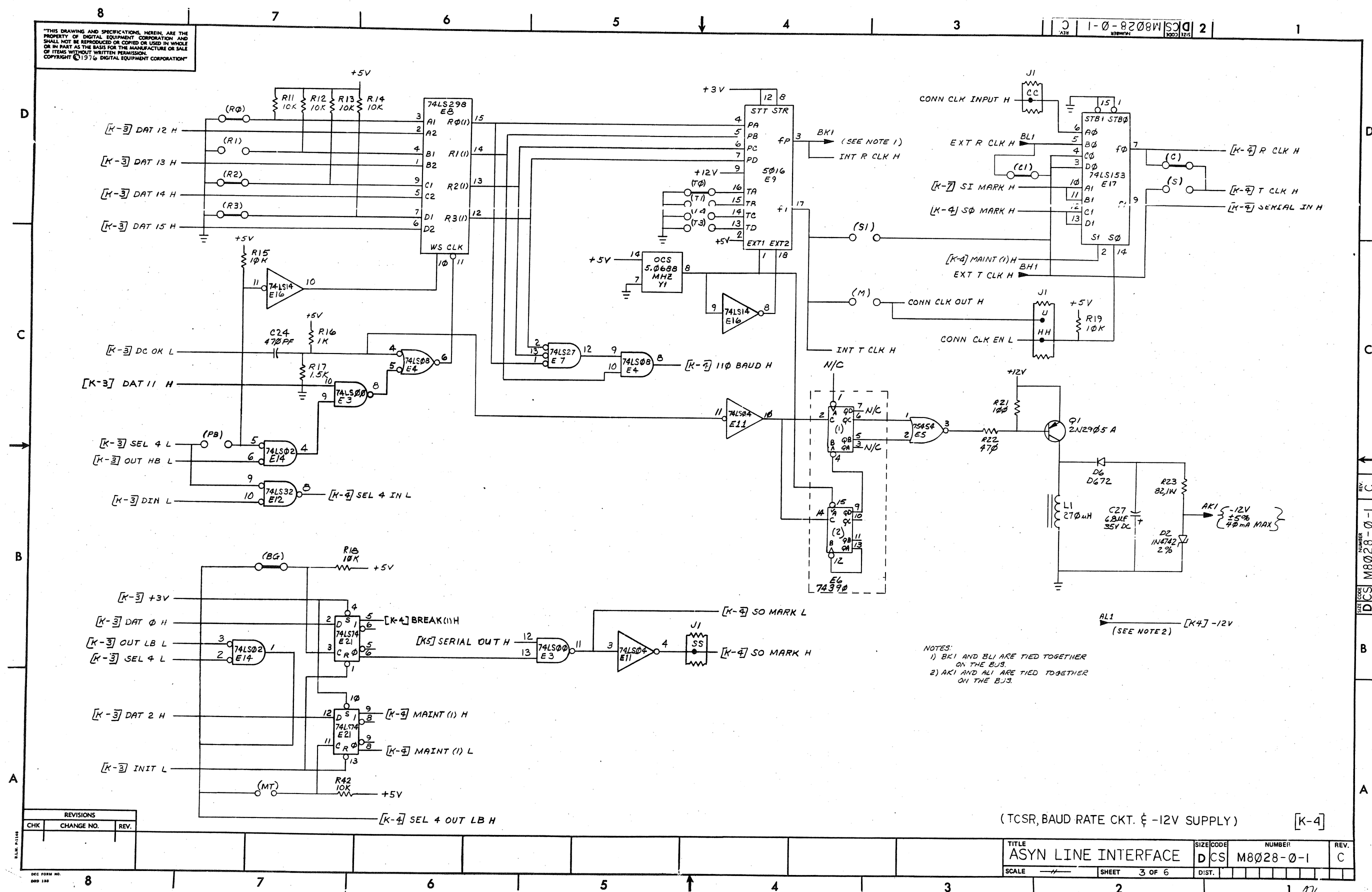
67 NOTE: IF 9009149-01 IS NOT AVAILABLE, USE 9009149-00.

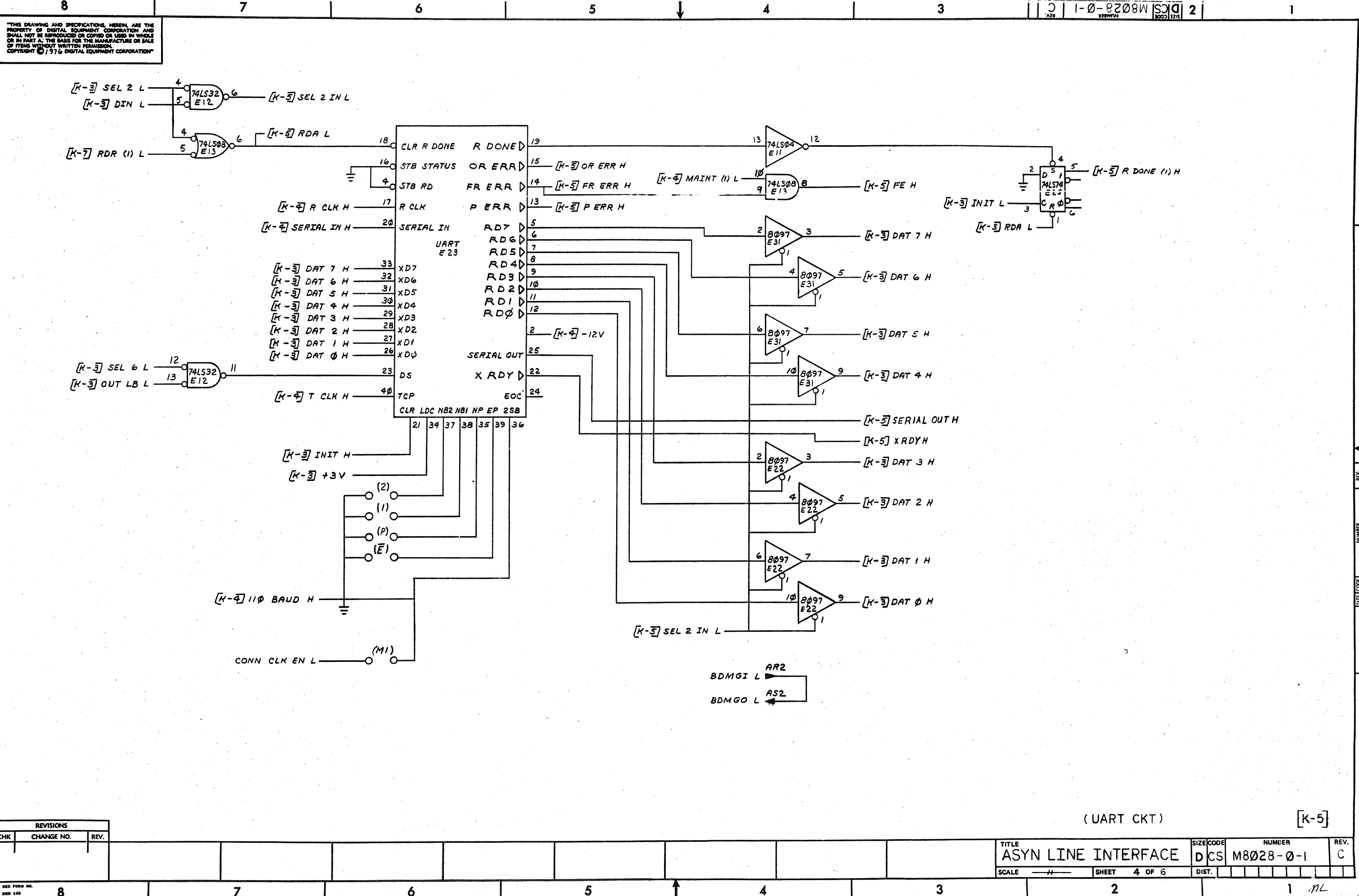
68 NOTE: THIS PART IDENTIFIES THE CATHODE WITH A SILVER BAR

	TITLE	PARTS LIST	SIZE	CODE	DOCUMENT NUMBER	REV
DIGITAL EQUIPMENT CORPORATION	ASYNCHRONOUS LINE INTERFACE		K	PL	M8028-0-DBP	C
MAYNARD, MASSACHUSETTS						

THIS DRAWING AND SPECIFICATIONS HEREIN ARE THE PROPERTY OF DIGITAL EQUIPMENT CORPORATION AND SHALL NOT BE REPRODUCED OR COPIED OR USED IN WHOLE OR IN PART AS THE BASIS FOR THE MANUFACTURE OR SALE OF ITEMS WITHOUT WRITTEN PERMISSION.
COPYRIGHT © 1976, DIGITAL EQUIPMENT CORPORATION

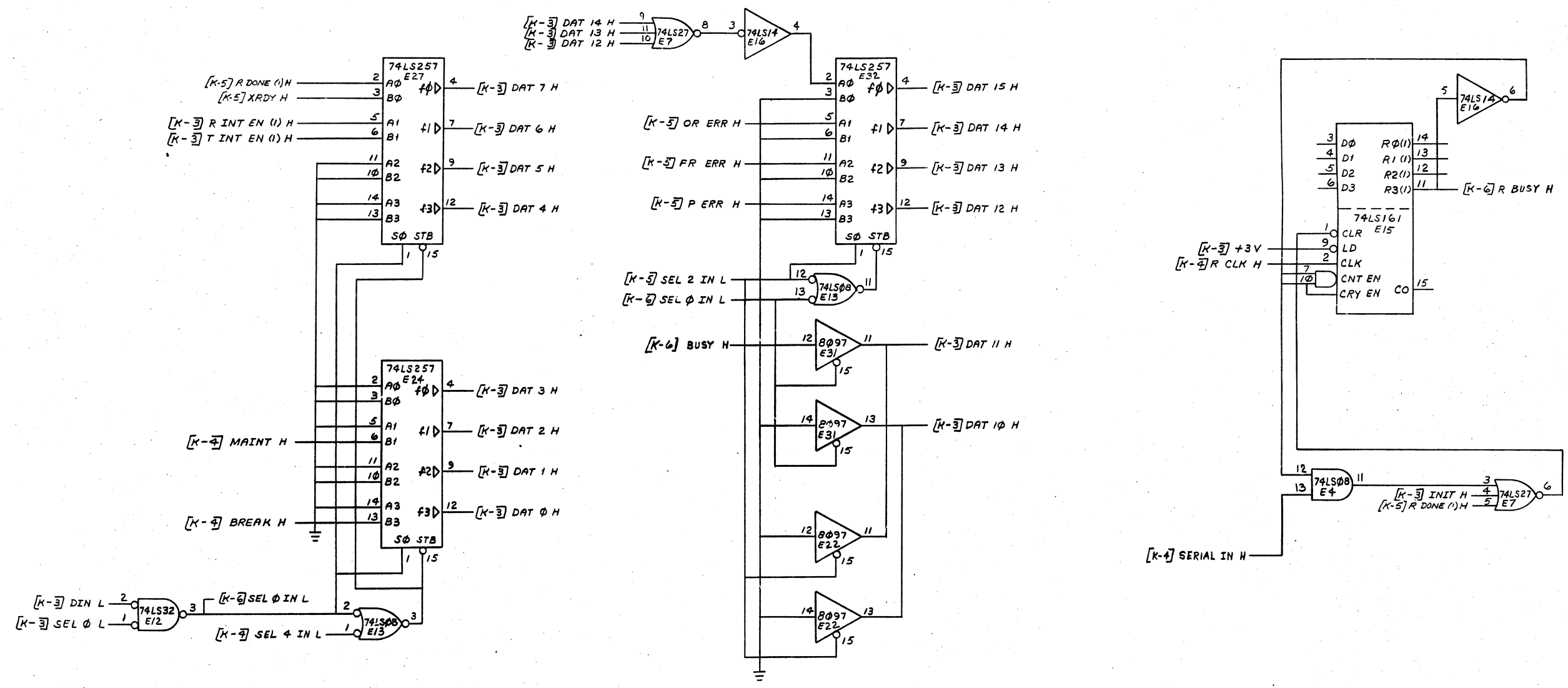






THIS DRAWING AND SPECIFICATIONS, HEREIN, ARE THE PROPERTY OF DIGITAL EQUIPMENT CORPORATION AND SHALL NOT BE REPRODUCED OR COPIED OR USED IN WHOLE OR IN PART AS THE BASIS FOR THE MANUFACTURE OR SALE OF ITEMS WITHOUT WRITTEN PERMISSION.
COPYRIGHT © 1976 DIGITAL EQUIPMENT CORPORATION

1-0-8208W SCD 2



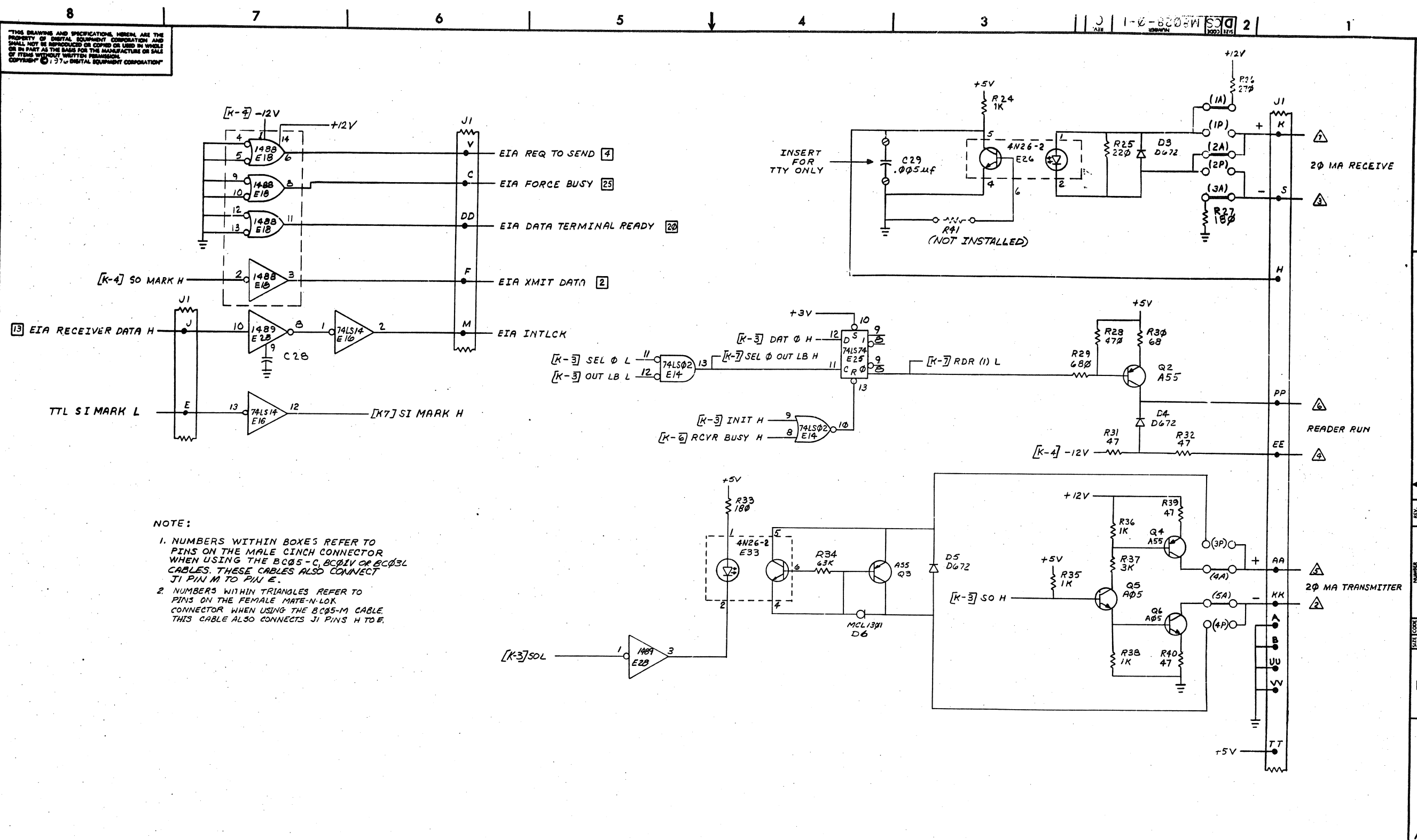
(INTERNAL BUS DRIVERS & RCVR BUSY CKT) [K-6]

TITLE		SIZE CODE	NUMBER	REV.
ASYN LINE INTERFACE		DCS	M8028-0-1	C
SCALE	SHFET	5 OF 6	DIST.	

REVISIONS		
CHK	CHANGE NO.	REV.

DEC FORM NO. DDD 130

THIS DRAWING AND SPECIFICATIONS HEREIN ARE THE PROPERTY OF DIGITAL EQUIPMENT CORPORATION AND SHALL NOT BE REPRODUCED OR COPIED OR USED IN WHOLE OR IN PART AS THE BASIS FOR THE MANUFACTURE OR SALE OF ITEMS WITHOUT WRITTEN PERMISSION. COPYRIGHT © 1971 DIGITAL EQUIPMENT CORPORATION



NOTE:
 1. NUMBERS WITHIN BOXES REFER TO PINS ON THE MALE CINCH CONNECTOR WHEN USING THE BC05-C, BC01V OR BC03L CABLES. THESE CABLES ALSO CONNECT J1 PIN M TO PIN E.
 2. NUMBERS WITHIN TRIANGLES REFER TO PINS ON THE FEMALE MATE-N-LOK CONNECTOR WHEN USING THE BC05-M CABLE. THIS CABLE ALSO CONNECTS J1 PINS H TO E.

(CURRENT LOOP CKT) [K-7]

REVISIONS		
CHK	CHANGE NO.	REV.

TITLE	ASYN LINE INTERFACE	SIZE CODE	D CS	NUMBER	M8028-0-1	REV.	C
SCALE	1/1	SHEET	6 OF 6	DIST.			

DIGITAL EQUIPMENT CORPORATION

MAYNARD, MASSACHUSETTS

PARTS LIST

MADE BY	M. MICHAUD	CHECKED	D. HEALY	SECTION
DATE	11 AUG 77	DATE	11 AUG 77	1
ENG	M. D. Michaud	PROD		ISSUED SECT.
DATE	18 Aug 77	DATE	8-19-77	1

QUANTITY VARIATION

[illegible][illegible]

TITLE	ASSY NO.	SIZE	CODE	NUMBER	REV	ECO NO.
SHIPPING LIST, DLV11-F	NONE	A	PL	DLV11-F	A	DLVII-F-00001
SHEET 1 OF 1	DIST					

This drawing and specifications, herein, are the property of Digital Equipment Corporation and shall not be reproduced or copied or used in whole or in part as the basis for the manufacture or sale of items without written permission. COPYRIGHT © 1973

DIGITAL EQUIPMENT CORPORATION

LEGEND		
NUMBER	VARIATION	
	LENGTH	ITEM #1
BCØ5M-2C	27 IN.	7008360
BCØ5M-04	48 IN.	7008360-1

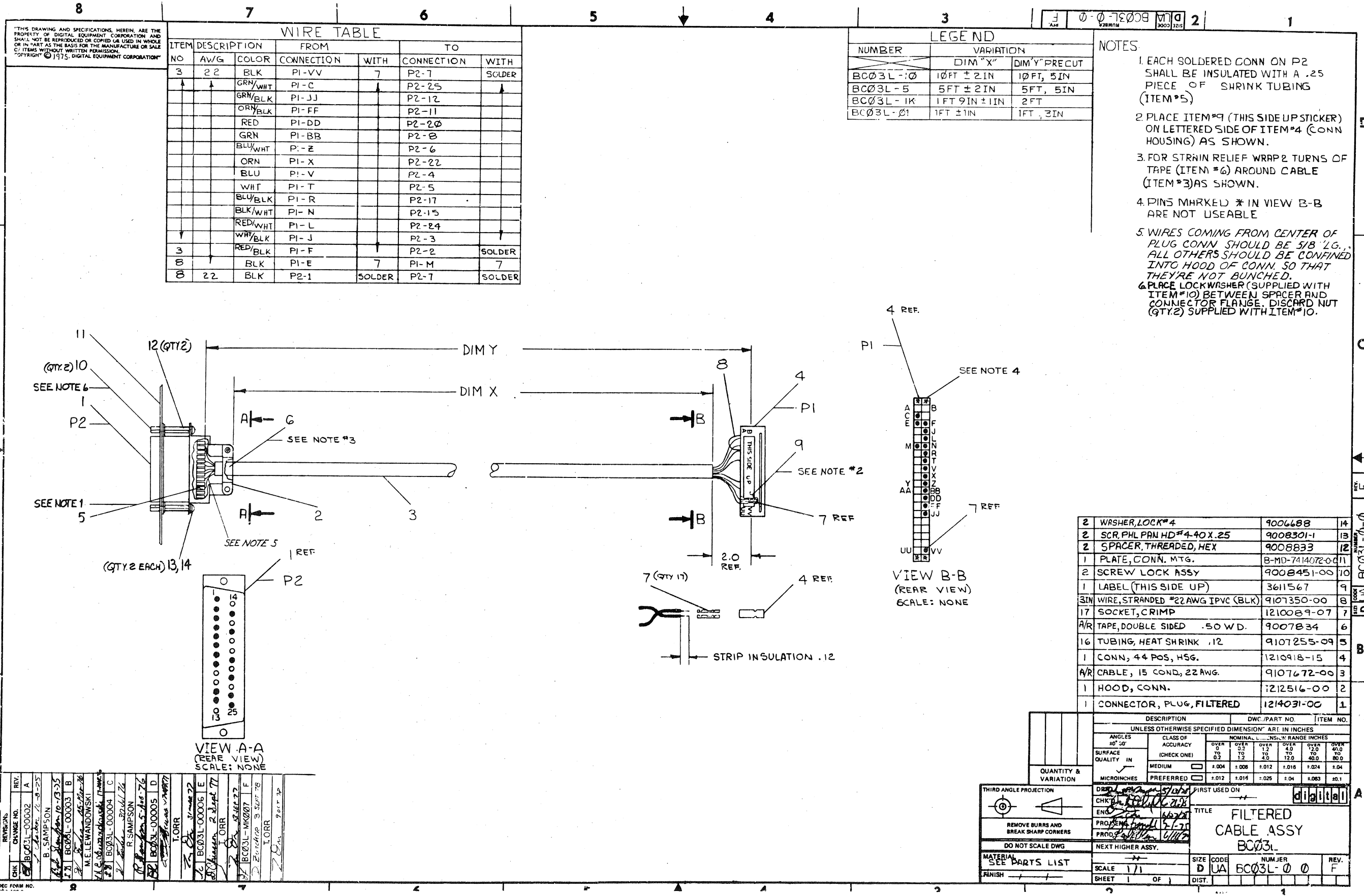
NOTES:

1. FOR ASSEMBLY SEE D-1A-7008360-0-0.

SEE NOTE #1

REVISIONS	
CHK	CHANGE NO.
28	BCØ5M-00001
J. Charbon 1-19-76	
M.E. LEWANDOWSKI	
M.E. Lewandowski 1-28-76	

FIRST USED ON OPTION/MODEL		1	CABLE ASSY	SEE LEGEND	1
UNLESS OTHERWISE SPECIFIED DIMENSION IN INCHES		QTY.	DESCRIPTION	PART NO.	ITEM NO.
TOLERANCES		PARTS LIST			
DECIMALS	ANGLES	DRN.	DATE	<div>digital</div> <div>EQUIPMENT CORPORATION</div> <div>MAYNARD MASSACHUSETTS</div> <div>TITLE</div> <div>BCØ5M CABLE ASSEMBLY (KL8-E, KL8-JA)</div>	
.xxx = .005	±0° 30'	CHK'D	DATE		
.xx = .02		ENG.	DATE		
.x = .1		PROJ. ENG.	DATE		
		PROD.	DATE		
REMOVE BURRS AND BREAK SHARP CORNERS SURFACE QUALITY V		NEXT HIGHER ASSY.		SIZE CODE	
MATERIAL				NUMBER	
SEE PARTS LIST				REV.	
FINISH		SCALE		B UA	
		SHEET OF		BCØ5M-Ø-Ø	
				A	
				DIST.	



THIS DRAWING AND SPECIFICATIONS, HEREIN, ARE THE PROPERTY OF DIGITAL EQUIPMENT CORPORATION AND SHALL NOT BE REPRODUCED OR COPIED OR USED IN WHOLE OR IN PART AS THE BASIS FOR THE MANUFACTURE OR SALE OF ITEMS WITHOUT WRITTEN PERMISSION.
COPYRIGHT © 1975, DIGITAL EQUIPMENT CORPORATION

WIRE TABLE						
ITEM NO	AWG	COLOR	FROM CONNECTION	WITH	TO CONNECTION	WITH
3	22	BLK	PI-VV	7	P2-7	SOLDER
↑	↑	GRN/WHI	PI-C	↑	P2-25	↑
↑	↑	GRN/BLK	PI-JJ	↑	P2-12	↑
↑	↑	GRN/BLK	PI-FF	↑	P2-11	↑
↑	↑	RED	PI-DD	↑	P2-20	↑
↑	↑	GRN	PI-BB	↑	P2-8	↑
↑	↑	BLU/WHI	PI-E	↑	P2-6	↑
↑	↑	ORN	PI-X	↑	P2-22	↑
↑	↑	BLU	PI-V	↑	P2-4	↑
↑	↑	WHI	PI-T	↑	P2-5	↑
↑	↑	BLU/BLK	PI-R	↑	P2-17	↑
↑	↑	BLK/WHI	PI-N	↑	P2-15	↑
↑	↑	RED/WHI	PI-L	↑	P2-24	↑
↑	↑	WHI/BLK	PI-J	↑	P2-3	↑
3	↑	RED/BLK	PI-F	↑	P2-2	SOLDER
8	↑	BLK	PI-E	7	PI-M	7
8	22	BLK	P2-1	SOLDER	P2-7	SOLDER

LEGEND		
NUMBER	VARIATION	
	DIM "X"	DIM "Y" PRECUT
BC03L-00	10FT ± 2IN	10FT, 5IN
BC03L-5	5FT ± 2IN	5FT, 5IN
BC03L-1K	1FT 9IN ± 1IN	2FT
BC03L-01	1FT ± 1IN	1FT, 3IN

- NOTES
1. EACH SOLDERED CONN ON P2 SHALL BE INSULATED WITH A .25 PIECE OF SHRINK TUBING (ITEM #5)
 2. PLACE ITEM #9 (THIS SIDE UPSTICKER) ON LETTERED SIDE OF ITEM #4 (CONN HOUSING) AS SHOWN.
 3. FOR STRAIN RELIEF WRAP 2 TURNS OF TAPE (ITEM #6) AROUND CABLE (ITEM #3) AS SHOWN.
 4. PINS MARKED * IN VIEW B-B ARE NOT USEABLE
 5. WIRES COMING FROM CENTER OF PLUG CONN SHOULD BE 5/8" LG. ALL OTHERS SHOULD BE CONFINED INTO HOOD OF CONN. SO THAT THEY'RE NOT BUNCHED.
 6. PLACE LOCKWASHER (SUPPLIED WITH ITEM #10) BETWEEN SPACER AND CONNECTOR FLANGE. DISCARD NUT (QTY 2) SUPPLIED WITH ITEM #10.

QTY	DESCRIPTION	DWG/PART NO.	ITEM NO.
2	WASHER, LOCK #4	9006688	14
2	SCR, PHL PAN HD #4-40 X .25	9008301-1	13
2	SPACER, THREADED, HEX	9008833	12
1	PLATE, CONN. MTG.	B-MD-7414072-0-011	11
2	SCREW LOCK ASSY	9008451-00	10
1	LABEL (THIS SIDE UP)	3611567	9
3IN	WIRE, STRANDED #22 AWG IPVC (BLK)	9107350-00	8
17	SOCKET, CRIMP	1210089-07	7
A/R	TAPE, DOUBLE SIDED .50 W.D.	9007834	6
16	TUBING, HEAT SHRINK .12	9107255-09	5
1	CONN, 44 POS, HSG.	1210918-15	4
A/R	CABLE, 15 COND, 22 AWG.	9107672-00	3
1	HOOD, CONN.	1212516-00	2
1	CONNECTOR, PLUG, FILTERED	1214031-00	1

REV	CHANGE NO.	DATE	BY	CHK
1	BC03L-00002	12-8-75	A	
2	BC03L-00003	12-13-75	B	
3	BC03L-00004	12-17-75	C	
4	BC03L-00005	12-17-75	D	
5	BC03L-00006	12-17-75	E	
6	BC03L-00007	12-17-75	F	
7	BC03L-00008	12-17-75	G	
8	BC03L-00009	12-17-75	H	
9	BC03L-00010	12-17-75	I	
10	BC03L-00011	12-17-75	J	
11	BC03L-00012	12-17-75	K	
12	BC03L-00013	12-17-75	L	
13	BC03L-00014	12-17-75	M	
14	BC03L-00015	12-17-75	N	
15	BC03L-00016	12-17-75	O	
16	BC03L-00017	12-17-75	P	
17	BC03L-00018	12-17-75	Q	
18	BC03L-00019	12-17-75	R	
19	BC03L-00020	12-17-75	S	
20	BC03L-00021	12-17-75	T	
21	BC03L-00022	12-17-75	U	
22	BC03L-00023	12-17-75	V	
23	BC03L-00024	12-17-75	W	
24	BC03L-00025	12-17-75	X	
25	BC03L-00026	12-17-75	Y	
26	BC03L-00027	12-17-75	Z	
27	BC03L-00028	12-17-75	AA	
28	BC03L-00029	12-17-75	AB	
29	BC03L-00030	12-17-75	AC	
30	BC03L-00031	12-17-75	AD	
31	BC03L-00032	12-17-75	AE	
32	BC03L-00033	12-17-75	AF	
33	BC03L-00034	12-17-75	AG	
34	BC03L-00035	12-17-75	AH	
35	BC03L-00036	12-17-75	AI	
36	BC03L-00037	12-17-75	AJ	
37	BC03L-00038	12-17-75	AK	
38	BC03L-00039	12-17-75	AL	
39	BC03L-00040	12-17-75	AM	
40	BC03L-00041	12-17-75	AN	
41	BC03L-00042	12-17-75	AO	
42	BC03L-00043	12-17-75	AP	
43	BC03L-00044	12-17-75	AQ	
44	BC03L-00045	12-17-75	AR	
45	BC03L-00046	12-17-75	AS	
46	BC03L-00047	12-17-75	AT	
47	BC03L-00048	12-17-75	AU	
48	BC03L-00049	12-17-75	AV	
49	BC03L-00050	12-17-75	AW	
50	BC03L-00051	12-17-75	AX	
51	BC03L-00052	12-17-75	AY	
52	BC03L-00053	12-17-75	AZ	
53	BC03L-00054	12-17-75	BA	
54	BC03L-00055	12-17-75	BB	
55	BC03L-00056	12-17-75	BC	
56	BC03L-00057	12-17-75	BD	
57	BC03L-00058	12-17-75	BE	
58	BC03L-00059	12-17-75	BF	
59	BC03L-00060	12-17-75	BG	
60	BC03L-00061	12-17-75	BH	
61	BC03L-00062	12-17-75	BI	
62	BC03L-00063	12-17-75	BJ	
63	BC03L-00064	12-17-75	BK	
64	BC03L-00065	12-17-75	BL	
65	BC03L-00066	12-17-75	BM	
66	BC03L-00067	12-17-75	BN	
67	BC03L-00068	12-17-75	BO	
68	BC03L-00069	12-17-75	BP	
69	BC03L-00070	12-17-75	BQ	
70	BC03L-00071	12-17-75	BR	
71	BC03L-00072	12-17-75	BS	
72	BC03L-00073	12-17-75	BT	
73	BC03L-00074	12-17-75	BU	
74	BC03L-00075	12-17-75	BV	
75	BC03L-00076	12-17-75	BW	
76	BC03L-00077	12-17-75	BX	
77	BC03L-00078	12-17-75	BY	
78	BC03L-00079	12-17-75	BZ	
79	BC03L-00080	12-17-75	CA	
80	BC03L-00081	12-17-75	CB	
81	BC03L-00082	12-17-75	CC	
82	BC03L-00083	12-17-75	CD	
83	BC03L-00084	12-17-75	CE	
84	BC03L-00085	12-17-75	CF	
85	BC03L-00086	12-17-75	CG	
86	BC03L-00087	12-17-75	CH	
87	BC03L-00088	12-17-75	CI	
88	BC03L-00089	12-17-75	CJ	
89	BC03L-00090	12-17-75	CK	
90	BC03L-00091	12-17-75	CL	
91	BC03L-00092	12-17-75	CM	
92	BC03L-00093	12-17-75	CN	
93	BC03L-00094	12-17-75	CO	
94	BC03L-00095	12-17-75	CP	
95	BC03L-00096	12-17-75	CQ	
96	BC03L-00097	12-17-75	CR	
97	BC03L-00098	12-17-75	CS	
98	BC03L-00099	12-17-75	CT	
99	BC03L-00100	12-17-75	CU	
100	BC03L-00101	12-17-75	CV	
101	BC03L-00102	12-17-75	CW	
102	BC03L-00103	12-17-75	CX	
103	BC03L-00104	12-17-75	CY	
104	BC03L-00105	12-17-75	CZ	
105	BC03L-00106	12-17-75	DA	
106	BC03L-00107	12-17-75	DB	
107	BC03L-00108	12-17-75	DC	
108	BC03L-00109	12-17-75	DD	
109	BC03L-00110	12-17-75	DE	
110	BC03L-00111	12-17-75	DF	
111	BC03L-00112	12-17-75	DG	
112	BC03L-00113	12-17-75	DH	
113	BC03L-00114	12-17-75	DI	
114	BC03L-00115	12-17-75	DJ	
115	BC03L-00116	12-17-75	DK	
116	BC03L-00117	12-17-75	DL	
117	BC03L-00118	12-17-75	DM	
118	BC03L-00119	12-17-75	DN	
119	BC03L-00120	12-17-75	DO	
120	BC03L-00121	12-17-75	DP	
121	BC03L-00122	12-17-75	DQ	
122	BC03L-00123	12-17-75	DR	
123	BC03L-00124	12-17-75	DS	
124	BC03L-00125	12-17-75	DT	
125	BC03L-00126	12-17-75	DU	
126	BC03L-00127	12-17-75	DV	
127	BC03L-00128	12-17-75	DW	
128	BC03L-00129	12-17-75	DX	
129	BC03L-00130	12-17-75	DY	
130	BC03L-00131	12-17-75	DZ	
131	BC03L-00132	12-17-75	EA	
132	BC03L-00133	12-17-75	EB	
133	BC03L-00134	12-17-75	EC	
134	BC03L-00135	12-17-75	ED	
135	BC03L-00136	12-17-75	EE	
136	BC03L-00137	12-17-75	EF	
137	BC03L-00138	12-17-75	EG	
138	BC03L-00139	12-17-75	EH	
139	BC03L-00140	12-17-75	EI	
140	BC03L-00141	12-17-75	EJ	
141	BC03L-00142	12-17-75	EK	
142	BC03L-00143	12-17-75	EL	
143	BC03L-00144	12-17-75	EM	
144	BC03L-00145	12-17-75	EN	
145	BC03L-00146	12-17-75	EO	
146	BC03L-00147	12-17-75	EP	
147	BC03L-00148	12-17-75	EQ	
148	BC03L-00149	12-17-75	ER	
149	BC03L-00150	12-17-75	ES	
150	BC03L-00151	12-17-75	ET	
151	BC03L-00152	12-17-75	EU	
152	BC03L-00153	12-17-75	EV	
153	BC03L-00154	12-17-75	EW	
154	BC03L-00155	12-17-75	EX	
155	BC03L-00156	12-17-75	EY	
156	BC03L-00157	12-17-75	EZ	
157	BC03L-00158	12-17-75	FA	
158	BC03L-00159	12-17-75	FB	
159	BC03L-00160	12-17-75	FC	
160	BC03L-00161	12-17-75	FD	
161	BC03L-00162	12-17-75	FE	
162	BC03L-00163	12-17-75	FF	
163	BC03L-00164	12-17-75	FG	
164	BC03L-00165	12-17-75	FH	
165	BC03L-00166	12-17-75	FI	
166	BC03L-00167	12-17-75	FJ	
167	BC03L-00168	12-17-75	FK	
168	BC03L-00169	12-17-75	FL	
169	BC03L-00170	12-17-75	FM	
170	BC03L-00171	12-17-75	FN	
171	BC03L-00172	12-17-75	FO	
172	BC03L-00173	12-17-75	FP	
173	BC03L-00174	12-17-75	FQ	
174	BC03L-00175	12-17-75	FR	
175	BC03L-00176	12-17-75	FS	
176	BC03L-00177	12-17-75	FT	
177	BC03L-00178	12-17-75	FU	
178	BC03L-00179	12-17-75	FV	
179	BC03L-00180	12-17-75	FW	
180	BC03L-00181	12-17-75	FX	
181	BC03L-00182	12-17-75	FY	
182	BC03L-00183	12-17-75	FZ	
183	BC03L-00184	12-17-75	GA	
184	BC03L-00185	12-17-75	GB	
185	BC03L-00186	12-17-75	GC	
186	BC03L-00187	12-17-75	GD	
187	BC03L-00188	12-17-75	GE	
188	BC03L-00189	12-17-75	GF	
189	BC03L-00190	12-17-75	GG	
190	BC03L-00191	12-17-75	GH	
191	BC03L-00192	12-17-75	GI	
192	BC03L-00193	12-17-75	GJ	
193	BC03L-00194	12-17-75	GK	
194	BC03L-00195	12-17-75	GL	
195	BC03L-00196	12-17-75	GM	
196	BC03L-00197	12-17-75	GN	
197	BC03L-00198	12-17-75	GO	
198	BC03L-00199	12-17-75	GP	
199	BC03L-00200	12-17-75	GQ	
200	BC03L-00201	12-17-75	GR	
201	BC03L-00202	12-17-75	GS	
202	BC03L-00203	12-17-75	GT	
203	BC03L-00204	12-17-75	GU	
204	BC03L-00205	12-17-75	GV	
205	BC03L-00206	12-17-75	GW	
206	BC03L-00207	12-17-75	GX	
207	BC03L-00208	12-17-75	GY	
208	BC03L-00209	12-17-75	GZ	
209	BC03L-00210	12-17-75	HA	
210	BC03L-00211	12-17-75	HB	
211	BC03L-00212	12-17-75	HC	
212	BC03L-00213	12-17-75	HD	
213	BC03L-00214	12-17-75	HE	
214	BC03L-00215	12-17-75	HF	
215	BC03L-00216	12-17-75	HG	
216	BC03L-00217	12-17-75	HH	
217	BC03L-00218	12-17-75	HI	
218	BC03L-00219	12-17-75	HJ	
219	BC03L-00220	12-17-75	HK	
220	BC03L-00221	12-17-75	HL	
221	BC03L-00222	12-17-75	HM	
222	BC03L-00223	12-17-75	HN	
223	BC03L-00224	12-17-75	HO	
224	BC03L-00225	12-17-75	HP	
225	BC03L-00226	12-17-75	HQ	
226	BC03L-00227	12-17-75	HR	
227	BC03L-00228	12-17-75	HS	
228	BC03L-00229	12-17-75	HT	
229	BC03L-00230	12-17-75	HU	
230	BC03L-00231	12-17-75	HV	
231	BC03L-00232	12-17-75	HW	
232	BC03L-00233	12-17-75	HX	
233	BC03L-00234	12-17-75	HY	
234	BC03L-00235	12-17-75	HZ	
235	BC03L-00236	12-17-75	IA	
236	BC03L-00237	12-17-75	IB	
237	BC03L-00238	12-17-75	IC	
238	BC03L-00239	12-17-75	ID	
239	BC03L-00240	12-17-75	IE	
240	BC03L-00241	12-17-75	IF	
241	BC03L-00242	12-17-75	IG	
242	BC03L-00243	12-17-75	IH	
243	BC03L-00244	12-17-75	II	
244	BC03L-00245	12-17-75	IJ	
245	BC03L-00246	12-17-75	IK	
246	BC03L-00247	12-17-75	IL	
247	BC03L-00248	12-17-75	IM	
248	BC03L-00249	12-17-75	IN	
249	BC03L-00250	12-17-75	IO	
250	BC03L-00251	12		