

[illegible]

ILLUSTRATED PARTS BREAKDOWN

655QR PEDESTAL SYSTEM

HOW TO USE THE IPB

GENERAL

This IPB is compiled following the organization and nomenclature of the engineering drawing structure.

MAJOR ASSEMBLY LOCATOR (When Applicable)

The Major Assembly Locator (first illustration) is an index that provides a description and a figure reference for all illustrations used in this manual.

INDENTED PARTS LIST

This manual identifies each assembly being broken down (figure reference callout), and all parts of that assembly. Further breakdown of an assembly is shown by an asterisk (*) preceding the item callouts in the Description Column. The number of asterisks preceding an item is used to denote the subordination of that item with respect to the Major Assembly. A single asterisk preceding an item description indicates that the item is part of the major assembly being illustrated. Items that are subordinate to single asterisks items, are denoted by two asterisks (**) and immediately follow the related single asterisk item. This system of part identification provides a means for the user to identify the next higher assembly item and make alternate selections for parts when the required replacement part of assembly is not immediately available.

COLUMN CALLOUT DESCRIPTION

Figure and Item - Indicates the figure number and item number of each part.

Description - Lists the name of the part and pertinent specifications (when required). Asterisks preceding the description denote the subordination of the part to the next higher assembly.

DEC Part No. - Lists the Digital part ordering number. A blank in this column indicates a Digital part number was not assigned at the time of publication.

ECO Cut-In - The notation at the top of this column indicates the ECO level of the system (option), at which the IPB was initially prepared. Subsequent ECO level designations, that modify existing parts or add new parts to the device, are inserted in the ECO Cut-In column next to the part that is added or modified.

Used On Code - Letters in this column correspond to the variation codes assigned in Figure 1. Parts with an Alpha notation(s) are used only in those option variations. A blank indicates that the part is used on all option variations.

Ref Fig No. - A cross reference between illustrations. For each Major Assembly, the number in this column denotes the figure of the next higher assembly. For all subassemblies, the number in this column denotes the figure showing additional detailed breakdown.

PART NUMBER/PART DESCRIPTION INDEX SECTION
Parts are indexed both numerically and alphabetically by description, referenced to a location within the IPB, by figure number and item number.

REVISION HISTORY				OTHER IPB MANUALS REFERENCED
PRINTING	ECO LEVEL		DATE	
1st Printing	655QR	00000-00000	30-JAN-90	EK-BA215-IP
	70-23988	00002-00002		
	70-25453	00000-00000		
	70-25434	00001-00001		
	70-25432	00001-00001		
	70-25433	00001-00001		

Digital Equipment Corporation reserves the right, without notice, to make substitutions and modifications in the specifications of products documented in this manual and further reserves the right to withdraw any of these products from the market without notice.

Digital Equipment Corporation is not responsible for errors which may appear in the technical description (including illustrations and photographs) of the products covered by this manual.

None of the descriptions contained in this manual imply the granting of any license whatsoever to make, use or sell equipment constructed in accordance therewith.

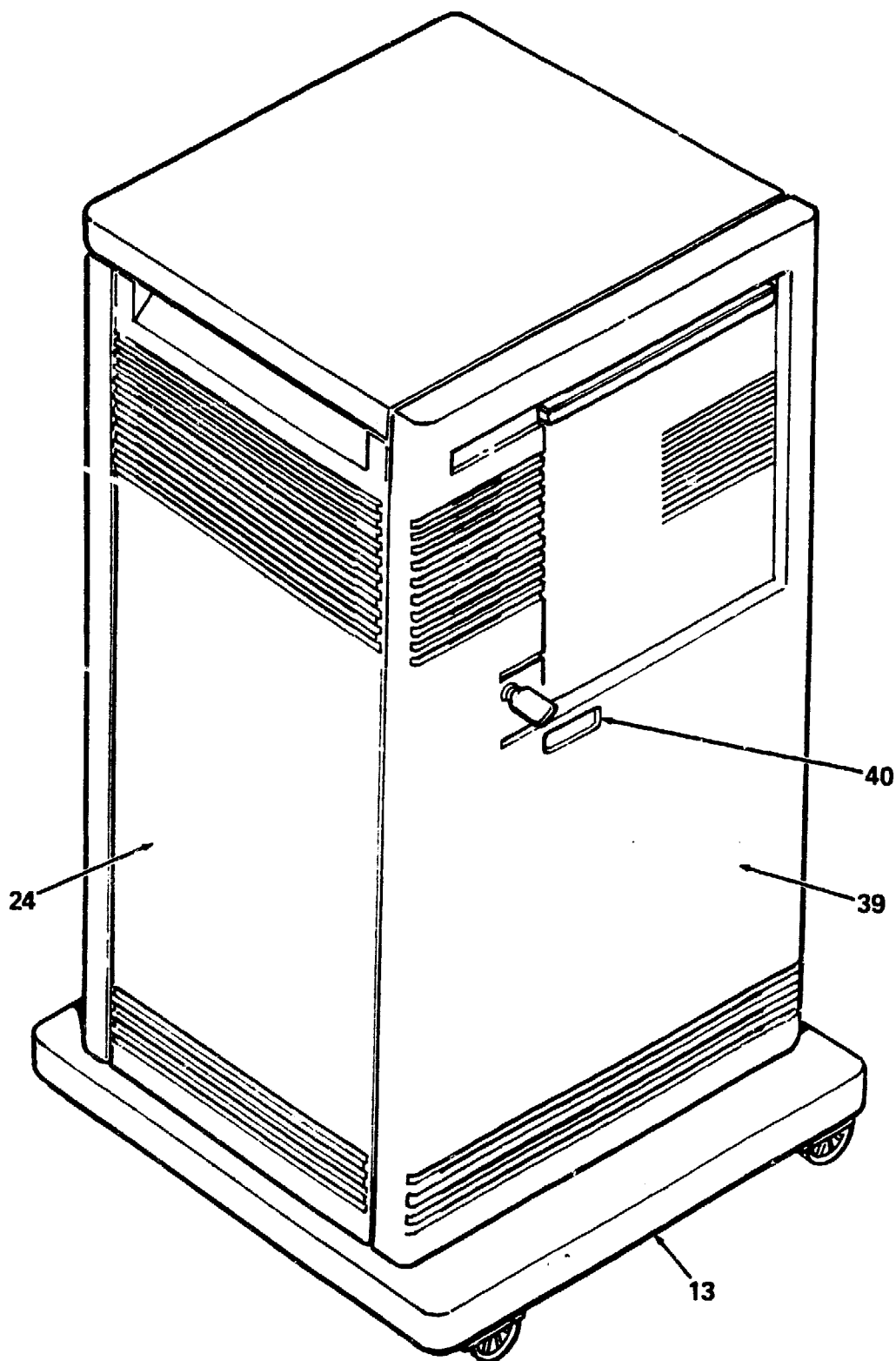
Copyright © 1990 by Digital Equipment Corporation. All rights reserved.

The postage-paid READER'S COMMENTS form on the last page of this document requests your critical evaluation to assist us in preparing future documentation.

The following are trademarks of Digital Equipment Corporation :



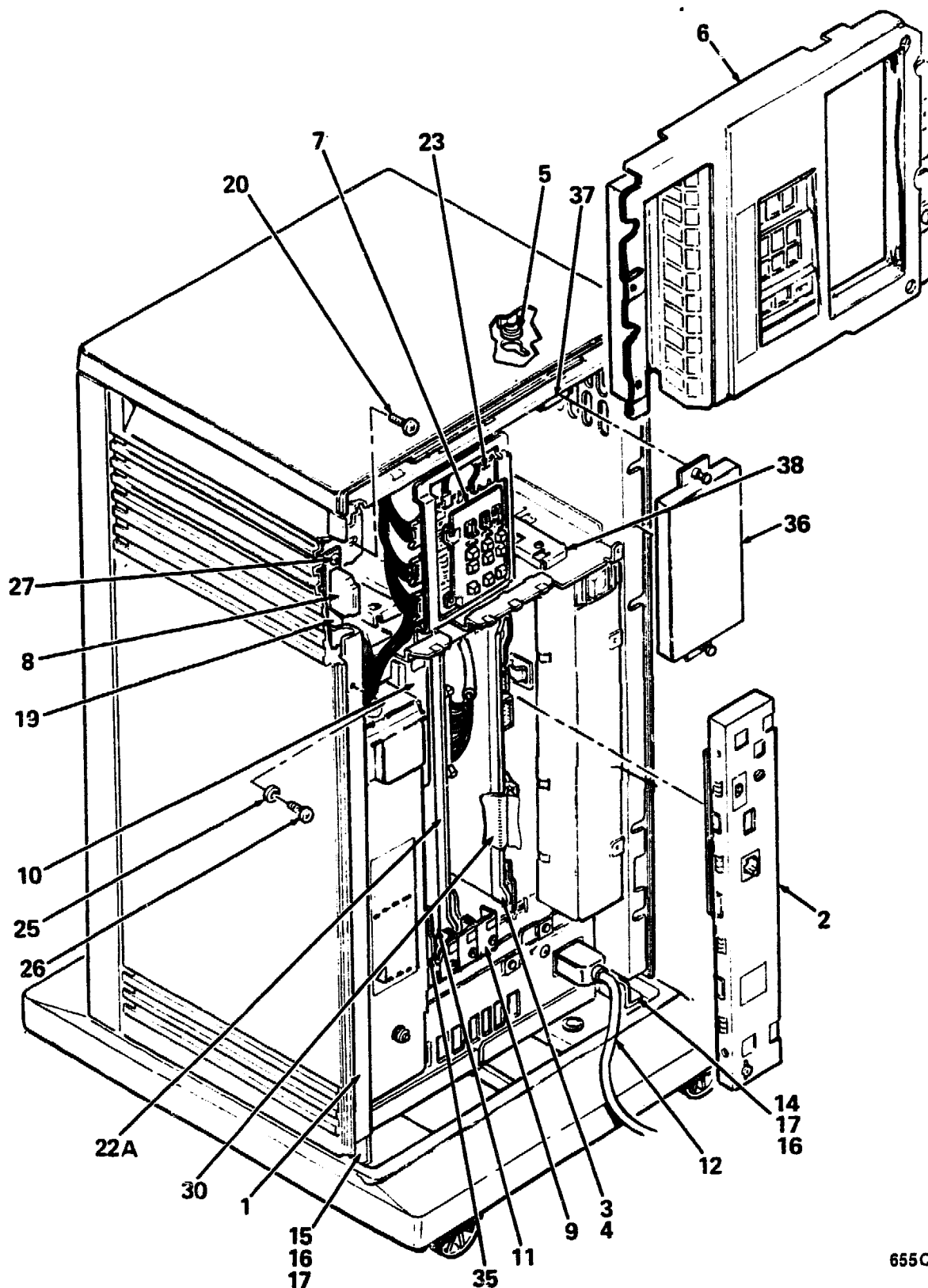
DEC
DECUS
PDP
UNIBUS
VAX



655QR-01-BD

Figure 1. Pedestal System (Sheet 1 of 3)

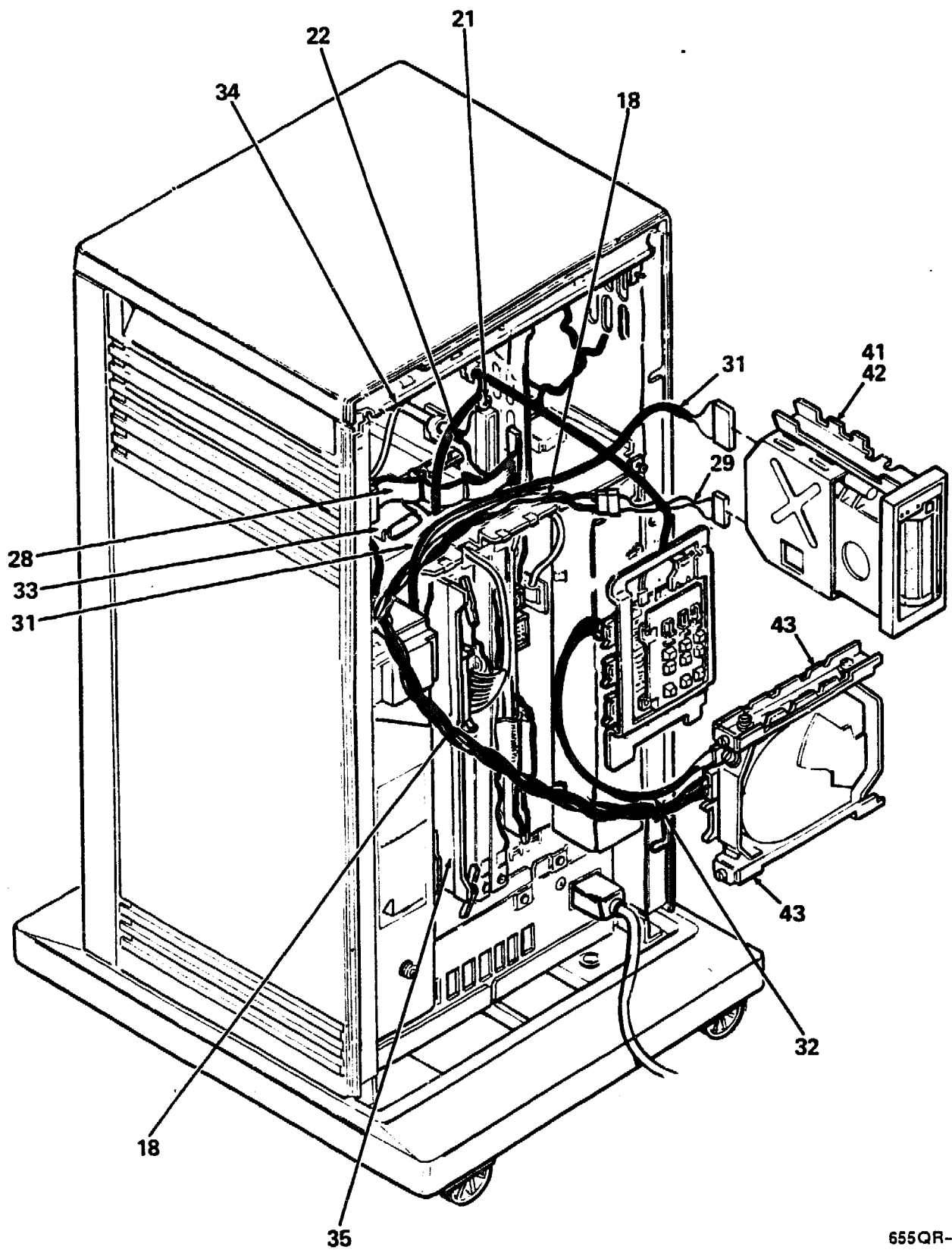
PARTS LIST



655QR-01A-BD

Figure 1. 655QR Pedestal System (Sheet 2 of 3)

PARTS LIST



655QR-01B-BD

Figure 1. 655QR Pedestal System (Sheet 3 of 3)

PARTS LIST

IPB-655QR

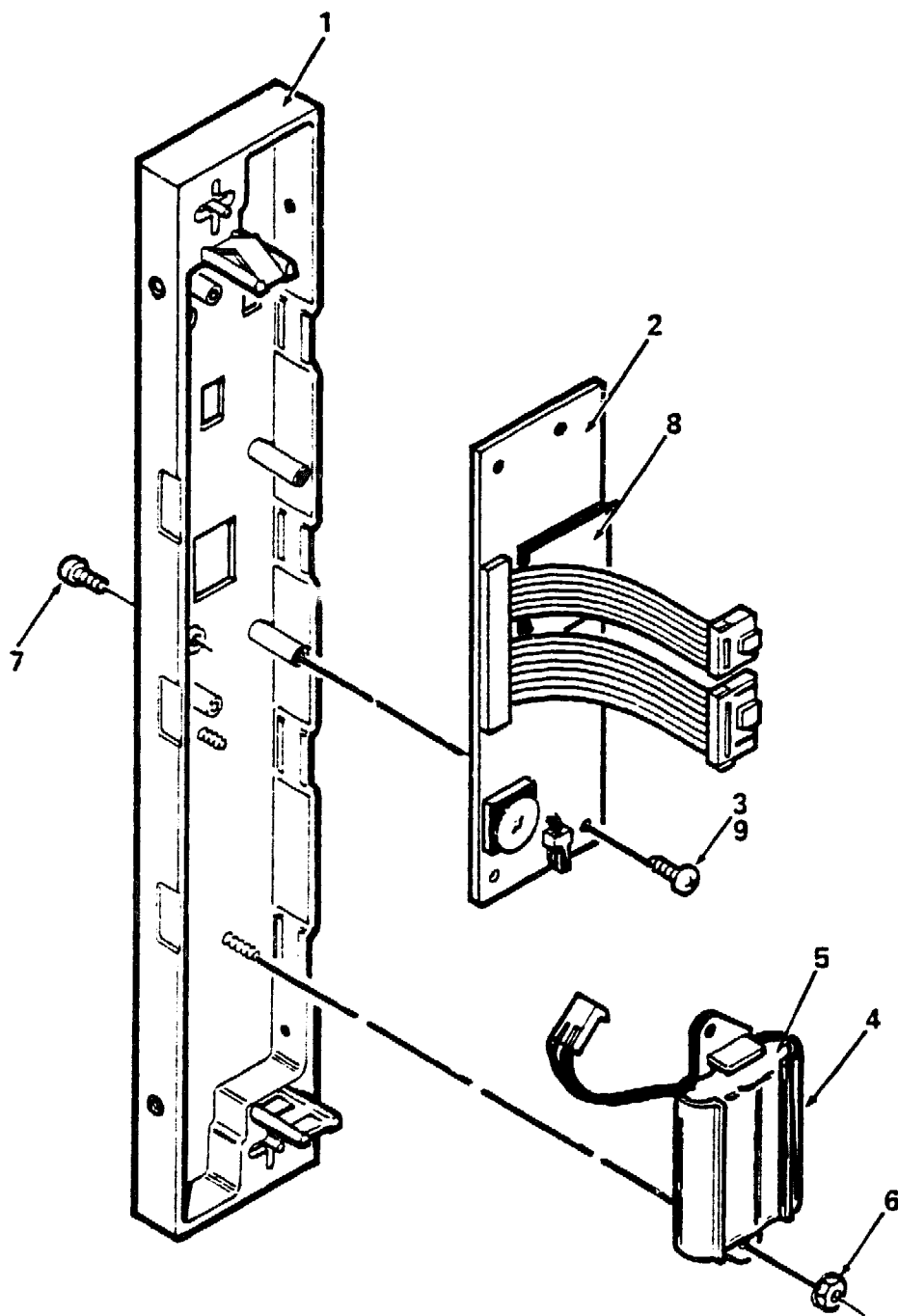
5

FIG. & ITEM NO.	DESCRIPTION	DEC PART NO.	ECO CUT-IN 655QR 00000	USED ON CODE	REF FIG NO.
1-	655QR PEDESTAL SYSTEM				
	Code A - Used on 655QR-A2 120V (w/o Skins) (Timeshare)	655QR-A2		A	
	Code B - Used on 655QR-A3 240V (w/o Skins) (Timeshare)	655QR-A3		B	
	Code C - Used on 655QR-B2 120V (w/Skins) (Timeshare)	655QR-B2		C	
	Code D - Used on 655QR-B3 240V (w/Skins) (Timeshare)	655QR-B3		D	
	Code E - Used on 655QR-D2 120V (w/o Skins, Wall Kit) (Timeshare)	655QR-D2		E	
	Code F - Used on 655QR-D3 240V (w/o Skins, Wall Kit) (Timeshare)	655QR-D3		F	
	Code G - Used on 655QR-E2 120V (w/o Skins) (Server)	655QR-E2		G	
	Code H - Used on 655QR-E3 240V (w/o Skins) (Server)	655QR-E3		H	
	Code J - Used on 655QR-F2 120V (w/Skins) (Server)	655QR-F2		J	
	Code K - Used on 655QR-F3 240V (w/Skins) (Server)	655QR-F3		K	
	Code L - Used on 655QR-J2 120V (w/o Skins, Wall Kit) (Server)	655QR-J2		L	
	Code M - Used on 655QR-J3 240V (w/o Skins, Wall Kit) (Server)	655QR-J3		M	
1	*CHASSIS ASSEMBLY (See IPB Manual EK-BA215-IP)	70-25451-01		ACE GJL	
	*CHASSIS ASSEMBLY (See IPB Manual EK-BA215-IP)	70-25451-02		BDF HKM	
2	*MODULE ASSEMBLY, H3600 BULKHEAD	70-23988-01			2
3	*Module, Mayfair III CPU	M7625-AA		A-F	
4	*Module, Mayfair III CPU	M7625-BA		G-M	
5	*Plug, Button	90-07064-00		ABEF GHLM	
6	*Panel Assembly, Front (Replaces 70-25448-01)	70-25795-01			
7	*PANEL ASSEMBLY, CONTROL	70-25453-01			3
8	*Connector, Terminator, DSSI	12-29258-01			
9	*Bulkhead Assembly, Front	70-23981-01			
10	*Bulkhead Assembly, Front (w/TK70 Cable Egress)	70-23981-04			
11	*Panel, Gap Filler Assembly	70-24071-01			
12	*Cord, Power	17-00083-11		ACE GJL	

FIG.& ITEM NO.	DESCRIPTION	DEC PART NO.	ECO CUT-IN	USED ON CODE	REF FIG NO.
13	*BASE ASSEMBLY	70-25434-01		CDJK	4
14	*Bracket, Base Mounting	74-36712-01		CDJK	
15	*Bracket, Base Mounting	74-36712-02		CDJK	
16	*Screw, Hex Cap Hd No. 1/4-20 x 1/2	90-06370-08		CDJK	
17	*Washer, Split	90-06637-00		CDJK	
18	*Harness Assembly, DC Storage (From Power Supply to RF and TK)	17-01965-01			5
19	*Plate Assembly, Connector	70-26208-01			
20	*Screw, Sems Phi Truss Hd No.6-32 x 1/4	90-00049-30			
21	*Screw, Sems Phi Pan Hd No. 4-40 x 1/2	90-09643-03			
22	*Cable Assembly, KFQSA DSSI, 50 Cond Round (See Note 2)	17-01931-01			
22A	*Module, KFQSA (See Note 2)	M7769-00			
23	*Cable Assembly, 10 Cond (From Backplane to OCP)	17-01964-01			
24	*ENCLOSURE ASSEMBLY, SHELL	70-25432-01		CDJK	
25	*Washer, Flat	90-06661-00		CDJK	
26	*Screw, Self-Tap Phi Pan Hd No. 8-16 x 1/2	90-09800-08		CDJK	
27	*Screw, Mach Flat Hd (Metric)02.5M x .08	90-10917-01			
28	*Cable Assembly, Internal DSSI Daisy- Chain, 50 Cond. Flat	17-01962-01			
29	*Harness Assembly, Wire 5-Pin to 4-Pin TK Adapter Power	17-01937-01			
30	*Cable Assembly, Flat, 50 Conductor	17-01898-01			
	*Cable Assembly, Flat, 50 Conductor	17-01898-02			
31	*Cable Assembly, Round (TQKXX to TKXX Drive) (See Note 2)	17-01363-01			
32	*Cable Assembly (RF to OCP)(See Note 2)	17-01936-01			6
33	*Shock Assembly, RF30 Bottom(See Note 2)	70-25452-01			
34	*Shock Assembly, RF30 Top (See Note 2)	70-25452-02			
35	*Module, Load	M9060-YA			
36	*Filler, Tape Drive (See Note 1)	74-36425-01			
37	*Shock Assembly, TK50/TK70 Top (See Note 1)	70-25452-03			
38	*Shock Assembly, TK50/TK70 Bottom (See Note 1)	70-25452-04			
39	*PANEL ASSEMBLY, FRONT	70-25433-01		CDJK	
40	*Medallion, MicroVAX 3800	74-36884-07		CD	
	*Medallion, VAXserver 3800	74-36884-08		JK	
41	*Bracket, TK50/TK70 Top (See Note 2)	74-33573-01			
42	*Bracket, TK50/TK70 Bottom (See Note 2)	74-33573-02			
43	*Bracket, RF30 (See Note 2)	74-36498-01			

FIG. & ITEM NO.	DESCRIPTION	DEC PART NO.	ECO CUT-IN	USED ON CODE	REF FIG NO.
	NOTE 1: Installed When No Tape Drive Is Used.				
	NOTE 2: Items Not Part Of This Assembly, Shown For Reference Only. These Items Are Installed At a Higher Assembly.				
	KITS (Not Shown)				
	*KIT, WALL MOUNT, BA213 LARGE S-BOX	BA213-WA		EFLM	
	**Guide, Wali Mount Installation	EK-213WA-IN		EFLM	
	**Hardware, Wall Mount	70-24263-01		EFLM	
	**Bracket, Wall Mount	74-34432-01		EFLM	
	***Screw, Sems Phl Pan Hd No. 10-32 x 3/8	90-09228-10		EFLM	
	*KIT, ACCESSORY (w/o Skins 120V)	70-24316-01		AEGL	
	**Cable Assembly, 06 Conductor	17-00811-02		AEGL	
	**Screwdriver, Flat Blade	47-00042-01		AEGL	
	**Label, "S-Box MU"	36-27923-01		AEGL	
	**Connector, 25-Position to 6-Position Adapter	12-23599-01		AEGL	
	**Connector, 25-Position to 6-Position Adapter	12-23599-05		AEGL	
	*KIT, ACCESSORY (w Skins 120V)	70-24316-02		CJ	
	**Cable Assembly, 06 Conductor	17-00811-02		CJ	
	**Key, Plastic	12-17119-01		CJ	
	**Screwdriver, Flat Blade	47-00042-01		CJ	
	**Label, "S-Box MU"	36-27923-01		CJ	
	**Connector, 25-Position to 6-Position Adapter	12-23599-05		CJ	
	*KIT, ACCESSORY (w/o Skins 240V)	70-24316-03		BFHM	
	**Cable Assembly, 06 Conductor	17-01364-02		BFHM	
	**Screwdriver, Flat Blade	47-00042-01		BFHM	
	**Label, "S-Box MU"	36-27923-01		BFHM	
	**Connector, 25-Position to 6-Position Adapter	12-23599-01		BFHM	
	**Connector, 25-Position to 6-Position Adapter	12-23599-05		BFHM	

FIG.& ITEM NO.	DESCRIPTION	DEC PART NO.	ECO CUT-IN	USED ON CODE	REF FIG NO.
	*KIT, ACCESSORY (w Skins 240V)	70-24316-04		DK	
	**Cable Assembly, 06 Conductor	17-01364-02		DK	
	**Key, Plastic	12-17119-01		DK	
	**Screwdriver, Flat Blade	47-00042-01		DK	
	**Label, "S-Box MU"	36-27923-01		DK	
	**Connector, 25-Position to 6-Position Adapter	12-23599-01		DK	
	**Connector, 25-Position to 6-Position Adapter	12-23599-05		DK	
	* KIT, Q-BUS GRANT CONTINUITY	M9047-SA			
	**Card, Q-Bus Grant Continuity	M9047-00			
	**Panel, Blank Dual	74-33507-01			
	**Kit, Bulkhead Panel	70-24505-01			
	**Kit, Bulkhead Panel	70-24505-02			
	**Label, "Module Numbers"	36-26883-18			
	LABELS (Not Shown)				
	*Label, "Module Number, (M7655-AA)"	36-26883-70		A-F	
	*Label, "Module Number, (KA655-BA)"	36-26883-71		G-M	
	*Label, "Warning Equipment Rating 100-120V"	36-17905-16		ACE	
				GJL	
	*Label, "Warning Equipment Rating 220-240V"	36-17905-17		BDF	
				HKM	
	*Label, "Serial/Model, 100V USA"	36-27329-07		ACE	
				GJL	
	*Label, "Serial/Model, 100V UK"	36-27329-08		ACE	
				GJL	
	*Label, "Serial/Model, 200V USA"	36-27329-09		BDF	
				HKM	
	*Label, "Serial/Model, 200V UK"	36-27329-10			
	*Label, "Logo/Model, BA215 MicroVAX III"	36-29304-06		ABEF	
	*Label, "Logo/Model, BA215 VAXserver III"	36-29304-07		GHLM	
	*Label, "BA215 Base, 100-120V USA"	36-29305-01		CJ	
	*Label, "BA215 Base, 220V-240V USA"	36-29305-02		DK	
	*Label, "Shipping Bracket BA215"	36-29343-01			
	*Label, "Bar Code"	36-18460-06			
	*Label, "Postcard, FTZ"	36-30422-08		BDFHK	
	*Label, "Module Number (M9060-YA)"	36-26883-17			
	*Label, "Control Panel"	36-29341-01			
	*Label, "BA2XX Rev-Rolled"	36-29163-07			



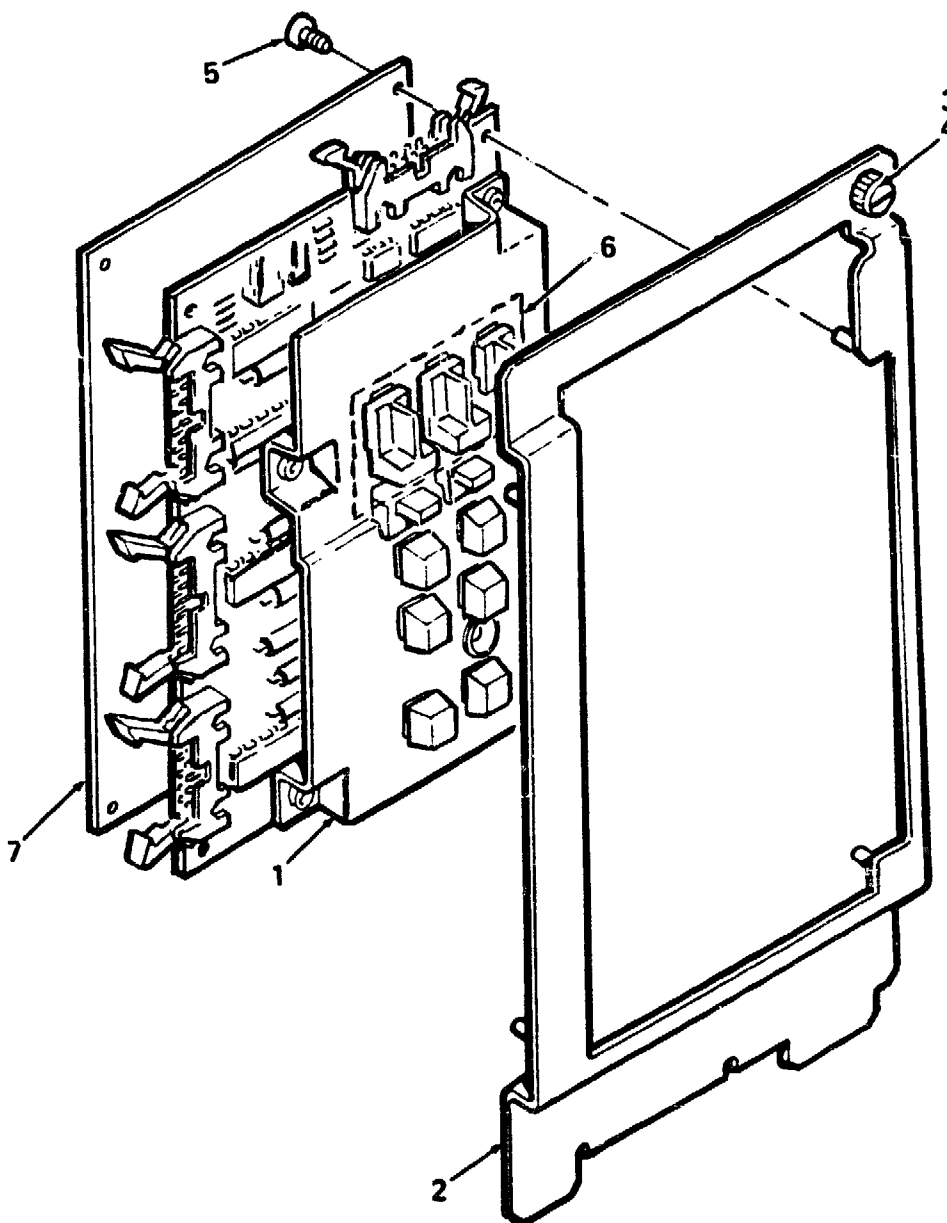
655QR-02-BD

Figure 2. Module Assembly, H3600 Bulkhead

PARTS LIST

FIG. & ITEM NO.	DESCRIPTION	DEC PART NO.	ECO CUT-IN 70-23988 00002	USED ON CODE	REF FIG NO.
2-	BULKHEAD ASSEMBLY, H3600 MODULE	70-23988-01			1
1	*Bulkhead Assembly,	70-23982-03			
2	*Module, SLU Console	54-17016-01			
3	*Screw, Self-Tap Truss Hd No. 6-32 x 5/16	90-09984-07			
4	*Holder, Battery Pack	74-33477-01			
5	*Battery, 3 Cell	12-19245-01			
6	*Nut, Kep No. 4-40	90-06557-00			
7	*Screw, Sems Phi Pan Hd No. 4-40 x 3/8	90-09643-00			
8	*Tape, Foam	90-08228-00			
9	*Screw, Self-Tap Truss Hd No. 6-32 x 5/16	90-00063-78			
	LABELS (Not Shown)				
	*Label, "Baud Select"	36-26584-01			
	*Label, "International"	36-20560-54			
	*Label, "International"	36-20560-53			
	*Label, "Kapton, Blank"	36-27920-01			
	*Label, "Over Laminate Polymide"	36-27921-01			
	*Label, "Dry Ink Foil, Black"	36-27922-01			
	*Label, "Direct Thermal"	36-28231-08			

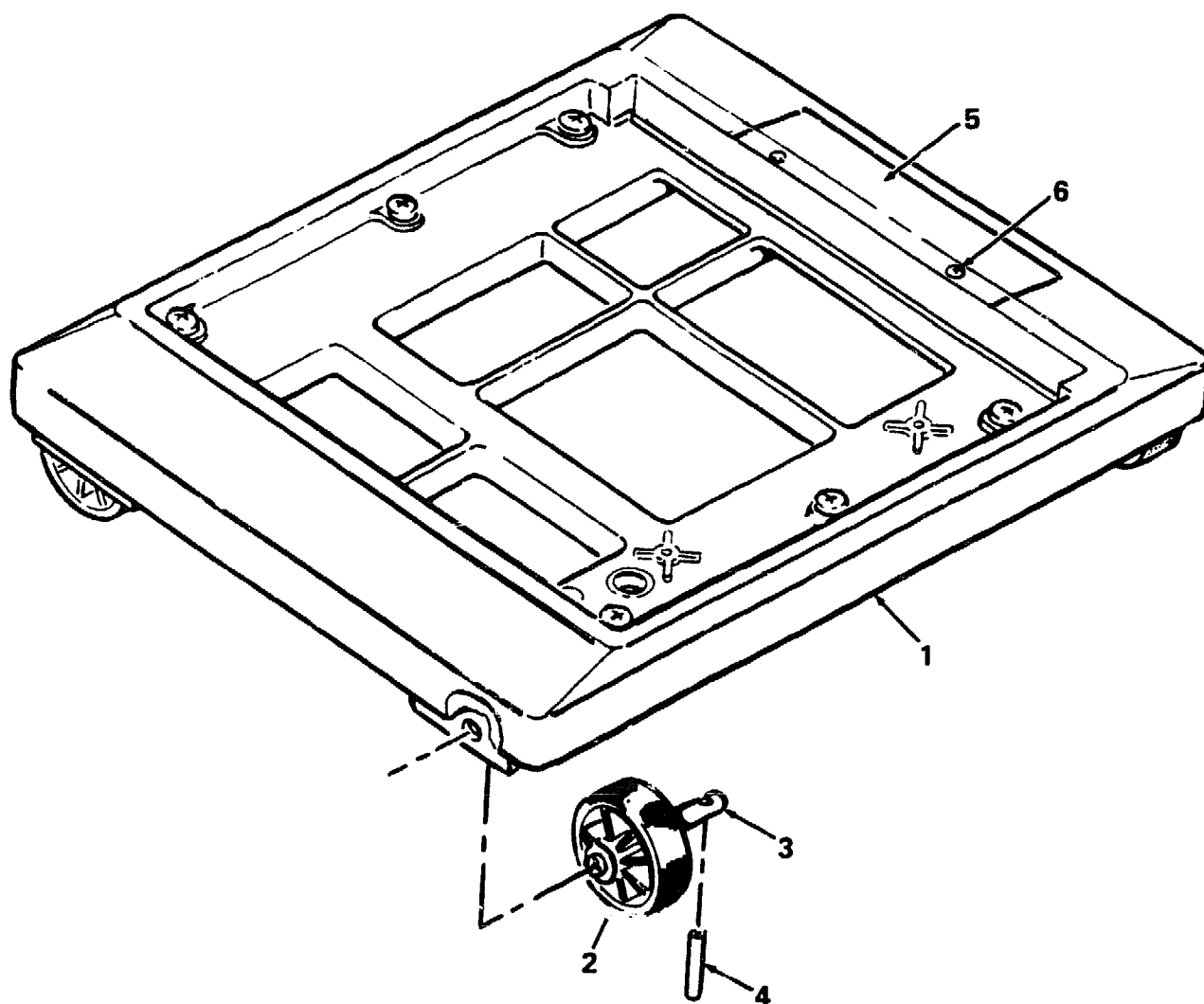
FIG. & ITEM NO.	DESCRIPTION	DEC PART NO.	A ECO CUT-IN 70-25453 00000	USED ON CODE	REF FIG NO.
3-	PANEL ASSEMBLY, CONTROL	70-25453-01			1
1	*Panel, DSSI Control	54-17388-01			
2	*Bracket, Control Panel	74-36500-01			
3	*Screw, Shoulder Socket Hd No. 6-32	12-29665-01			
4	*Nut, Retaining	12-27764-01			
5	*Screw, Self-Tap Truss Hd No. 6 x 5/16	90-00063-78			
6	*Lens, Encoder Set	12-28766-19			
7	*Label, "Wiring Diagram"	36-29233-01			



655QR-03-BD

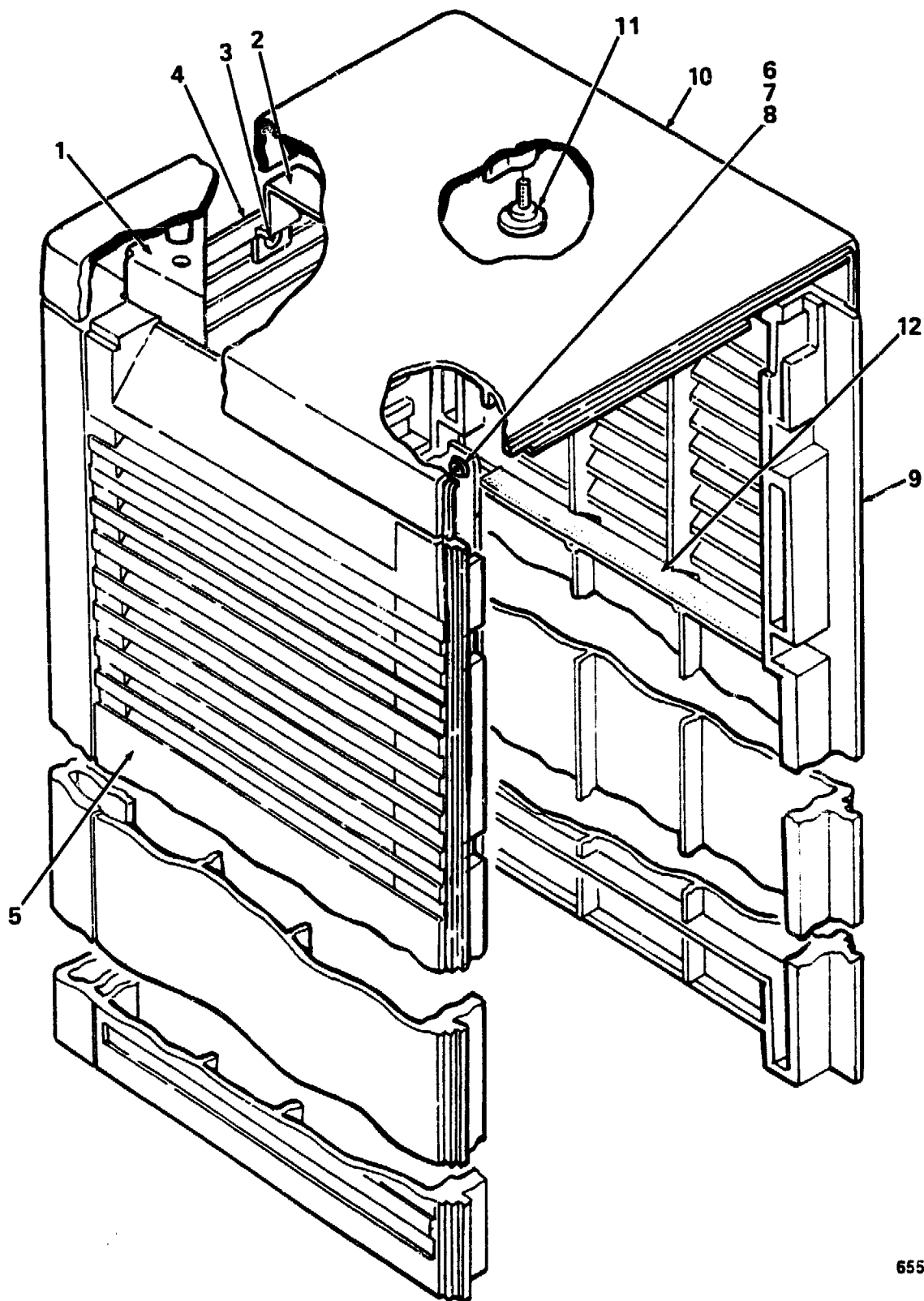
Figure 3. Panel Assembly, Control

FIG. & ITEM NO.	DESCRIPTION	DEC PART NO.	ECO CUT-IN 70-25434 00001	USED ON CODE	REF FIG NO.
4-	BASE ASSEMBLY	70-25434-01		CDJK	1
1	*Base	74-36457-01			
2	*Wheel, Base	74-34068-01			
3	*Shaft, Wheel	74-34069-01			
4	*Pin, Roll	90-09385-00			
5	*Support, Label	74-34846-01			
6	*Screw, Self-Tap Phl Pan Hd No. 6-19 x 3/8	90-09800-06			



655QR-04-BD

Figure 4. Base Assembly

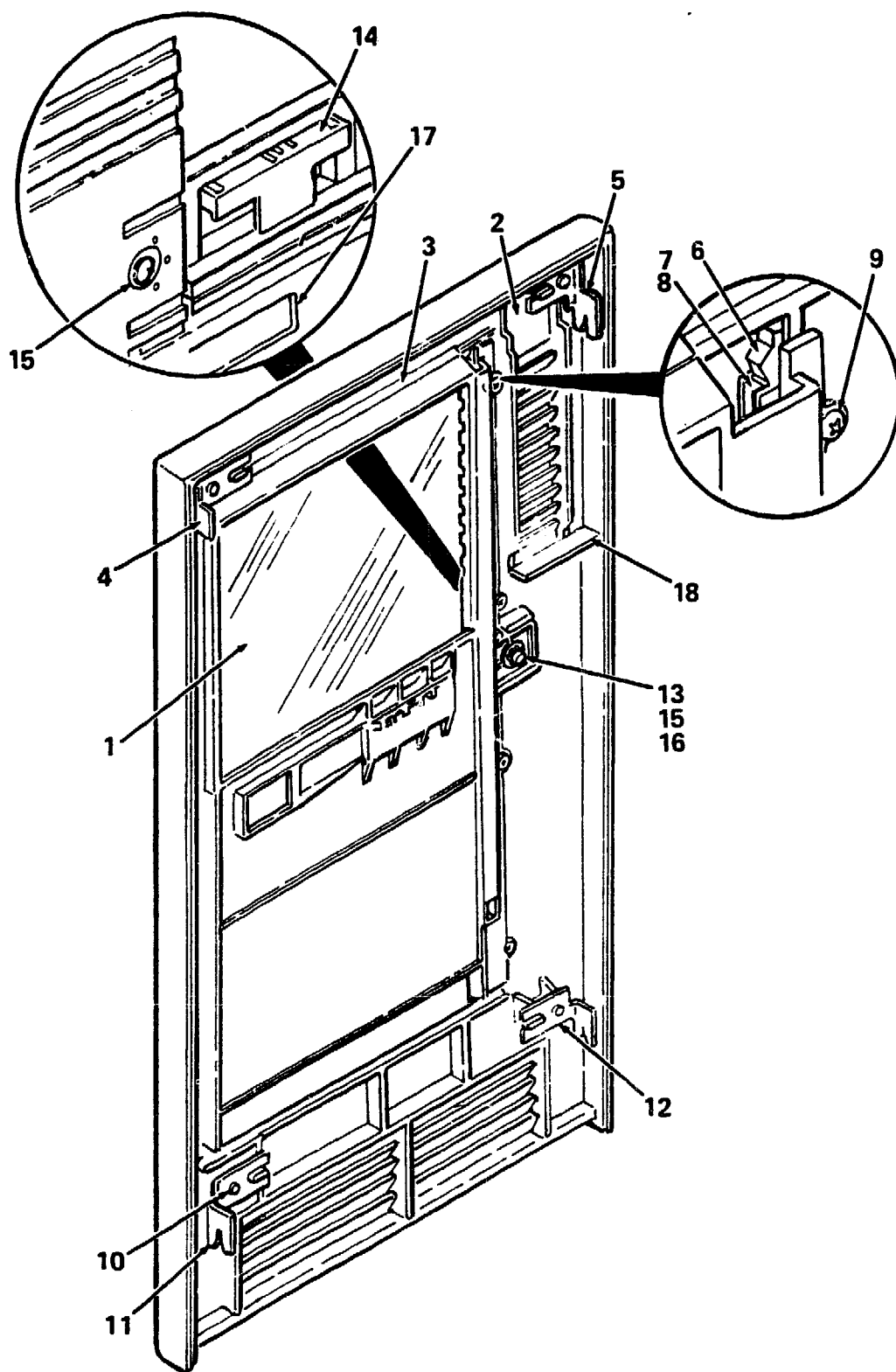


655QR-05-BD

Figure 5. Enclosure Assembly, Shell

PARTS LIST

FIG. & ITEM NO.	DESCRIPTION	DEC PART NO.	ECO CUT-IN 70-25432 00001	USED ON CODE	REF FIG NO.
5-	ENCLOSURE ASSEMBLY, SHELL	70-25432-01		CDJK	1
1	*Bracket, Corner	74-34126-01			
2	*Bracket, Side	74-34125-01			
3	*Screw, Self-Tap Phi Pan Hd No. 8-16 x 3/8	90-09800-04			
4	*Panel, Rear	74-36458-01			
5	*Panel, Left Side	74-33694-01			
6	*Sleeve	74-34424-01			
7	*Washer, Flat	90-06661-00			
8	*Screw, Self-Tap Phi Hd No. 8-16 x 1/2	90-09800-08			
9	*Panel, Right Side	74-33647-01			
10	*Cover, Top	74-36456-01			
11	*Screw, Thread Rolling Shoulder	12-26868-01			
12	*Foam, Air Closure	74-34232-05			



655QR-06-BD

Figure 6. Panel Assembly, Front

PARTS LIST

FIG.& ITEM NO.	DESCRIPTION	DEC PART NO.	ECO CUT-IN 70-25433 00001	USED ON CODE	REF FIG NO.
6-	PANEL ASSEMBLY, FRONT	70-25433-01		CDJK	1
1	*Door	74-34061-01			
2	*Panel, Front	74-36459-01			
3	*Bezel, Switch	74-34067-01			
4	*Bracket, Top Left	74-34123-01			
5	*Bracket, Top Right	74-34123-02			
6	*Stop, Door Position	74-34363-01			
7	*Spring, Channel	74-34066-01			
8	*Channel	74-34062-01			
9	*Screw, Self-Tap Phi Pan Hd No. 6-19 x 3/8	90-09800-06			
10	*Screw, Self-Tap Phi Pan Hd No. 8-16 x 3/8	90-09800-04			
11	*Bracket, Bottom Left	74-34124-01			
12	*Bracket, Bottom Right	74-34124-02			
13	*Latch, Slide	74-34065-01			
14	*Latch, Pull	74-34064-01			
15	*Tumbler	74-34063-01			
16	*Ring, Retaining	90-09257-05			
17	*Logo	74-36643-01			
18	*Foam, Air Closure	74-34232-06			
					Ω

PART NUMBER/DESCRIPTION SORT



**INDEX BY DEC PART NUMBER
655QR PEDESTAL SYSTEM**

PART NO.	DESCRIPTION	FIG NO.	ITEM NO.
655QR-A2	655QR-A2 120V (w/o Skins)(Timeshare)	1	N/A
655QR-A3	655QR-A3 240V (w/o Skins)(Timeshare)	1	N/A
655QR-B2	655QR-B2 120V (w/Skins)(Timeshare)	1	N/A
655QR-B3	655QR-B3 240V (w/Skins)(Timeshare)	1	N/A
655QR-D2	655QR-D2 120V (w/o Skins, Wall Kit)(Timeshare)	1	N/A
655QR-D3	655QR-D3 240V (w/o Skins, Wall Kit)(Timeshare)	1	N/A
655QR-E2	655QR-E2 120V (w/o Skins)(Server)	1	N/A
655QR-E3	655QR-E3 240V (w/o Skins)(Server)	1	N/A
655QR-F2	655QR-F2 120V (w/Skins)(Server)	1	N/A
655QR-F3	655QR-F3 240V (w/Skins)(Server)	1	N/A
655QR-J2	655QR-J2 120V (w/o Skins, Wall Kit)(Server)	1	N/A
655QR-J3	655QR-J3 240V (w/o Skins, Wall Kit)(Server)	1	N/A
12-17119-01	Key, Plastic	1	Not Shown
12-17119-01	Key, Plastic	1	Not Shown
12-19245-01	Battery, 3 Cell	2	5
12-23599-01	Connector, 25-Position to 6-Position Adapter	1	Not Shown
12-23599-01	Connector, 25-Position to 6-Position Adapter	1	Not Shown
12-23599-01	Connector, 25-Position to 6-Position Adapter	1	Not Shown
12-23599-05	Connector, 25-Position to 6-Position Adapter	1	Not Shown
12-23599-05	Connector, 25-Position to 6-Position Adapter	1	Not Shown
12-23599-05	Connector, 25-Position to 6-Position Adapter	1	Not Shown
12-23599-05	Connector, 25-Position to 6-Position Adapter	1	Not Shown
12-26868-01	Screw, Thread Rolling Shoulder	5	11
12-27764-01	Nut, Retaining	3	4
12-28766-19	Lens, Encoder Set	3	6
12-29258-01	Connector, Terminator, DSSI	1	8
12-29665-01	Screw, Shoulder Socket Hd No. 6-32	3	3
17-00083-11	Cord, Power	1	12
17-00811-02	Cable Assembly, 06 Conductor	1	Not Shown
17-00811-02	Cable Assembly, 06 Conductor	1	Not Shown
17-01363-01	Cable Assembly, Round (TKQXX to TKXX Drive)	1	31
17-01364-02	Cable Assembly, 06 Conductor	1	Not Shown
17-01364-02	Cable Assembly, 06 Conductor	1	Not Shown
17-01898-01	Cable Assembly, Flat, 50 Conductor	1	30
17-01898-02	Cable Assembly, Flat, 50 Conductor	1	30
17-01931-01	Cable Assembly, KFQSA DSSI, 50 Cond Round	1	22
17-01936-01	Cable Assembly (RF to OCP)	1	32
17-01937-01	Harness Assembly, Wire 5-Pin to 4-PinTK Adapter Power	1	29
17-01962-01	Cable Assembly, Internal DSSI Daisy-Chain, 50 Cond. Flat	1	28
17-01964-01	Cable Assembly, 10 Cond(From Backplane to OCP)	1	23
17-01965-01	Harness Assembly, DC Storage(From Power Supply to RF and TK)	1	18
36-17905-16	Label, "Warning Equipment Rating 100-120V"	1	Not Shown
36-17905-17	Label, "Warning Equipment Rating 220-240V"	1	Not Shown
36-18460-06	Label, "Bar Code"	1	Not Shown
36-20560-53	Label, "International	2	Not Shown
36-20560-54	Label, "International	2	Not Shown
36-26584-01	Label, "Baud Select"	2	Not Shown
36-26883-17	Label, "Module Number (M9060-YA)"	1	Not Shown
36-26883-18	Label, "Module Numbers"	1	Not Shown

INDEX BY DEC PART NUMBER 655QR PEDESTAL SYSTEM

PART NO.	DESCRIPTION	FIG NO.	ITEM NO.
36-26883-70	Label, "Module Number, (M7655-AA)"	1	Not Shown
36-26883-71	Label, "Module Number, (KA655-BA)"	1	Not Shown
36-27329-07	Label, "Serial/Model, 100V USA"	1	Not Shown
36-27329-08	Label, "Serial/Model, 100V UK"	1	Not Shown
36-27329-09	Label, "Serial/Model, 200V USA"	1	Not Shown
36-27329-10	Label, "Serial/Model, 200 UK"	1	Not Shown
36-27920-01	Label, "Kapton, Blank"	2	Not Shown
36-27921-01	Label, "Over Laminate Polyimide"	2	Not Shown
36-27922-01	Label, "Dry Ink Foil, Black"	2	Not Shown
36-27923-01	Label, "S-Box MU"	1	Not Shown
36-27923-01	Label, "S-Box MU"	1	Not Shown
36-27923-01	Label, "S-Box MU"	1	Not Shown
36-27923-01	Label, "S-Box MU"	1	Not Shown
36-28231-08	Label, "Direct Thermal"	2	Not Shown
36-29163-07	Label, "BA2XX Rev-Rolled"	1	Not Shown
36-29233-01	Label, "Wiring Diagram"	3	7
36-29304-06	Label, "Logo/Model, BA215 MicroVAX III"	1	Not Shown
36-29304-07	Label, "Logo/Model, BA215 VAXserver III"	1	Not Shown
36-29305-01	Label, "BA215 Base, 100-120V USA"	1	Not Shown
36-29305-02	Label, "BA215 Base, 220V-240V USA"	1	Not Shown
36-29341-01	Label, "Control Panel"	1	Not Shown
36-29343-01	Label, "Shipping Bracket BA215"	1	Not Shown
36-30422-08	Label, "Postcard, FTZ"	1	Not Shown
47-00042-01	Screwdriver, Flat Blade	1	Not Shown
47-00042-01	Screwdriver, Flat Blade	1	Not Shown
47-00042-01	Screwdriver, Flat Blade	1	Not Shown
47-00042-01	Screwdriver, Flat Blade	1	Not Shown
54-17016-01	Module, SLU Console	2	2
54-17388-01	Panel, DSSI Control	3	1
70-23981-01	Bulkhead Assembly, Front	1	9
70-23981-04	Bulkhead Assembly, Front (w/TK70 Cable Egress)	1	10
70-23982-03	Bulkhead Assembly,	2	1
70-23988-01	BULKHEAD ASSEMBLY, H3600 MODULE	2	N/A
70-23988-01	MODULE ASSEMBLY, H3600 BULKHEAD	1	2
70-24071-01	Panel , Gap Filler Assembly	1	11
70-24263-01	Hardware, Wall Mount	1	Not Shown
70-24316-01	KIT, ACCESSORY (w/o Skins 120V)	1	Not Shown
70-24316-02	KIT, ACCESSORY (w/Skins 120V)	1	Not Shown
70-24316-03	KIT, ACCESSORY (w/o Skins 240V)	1	Not Shown
70-24316-04	KIT, ACCESSORY (w/Skins 240V)	1	Not Shown
70-24505-01	Kit, Bulkhead Panel	1	Not Shown
70-24505-02	Kit, Bulkhead Panel	1	Not Shown
70-25432-01	ENCLOSURE ASSEMBLY, SHELL	1	24
70-25432-01	ENCLOSURE ASSEMBLY, SHELL	5	N/A
70-25433-01	PANEL ASSEMBLY, FRONT	6	N/A
70-25433-01	PANEL ASSEMBLY, FRONT	1	39
70-25434-01	BASE ASSEMBLY	4	N/A
70-25434-01	BASE ASSEMBLY	1	13
70-25451-01	CHASSIS ASSEMBLY	1	1
70-25451-02	CHASSIS ASSEMBLY	1	1
70-25452-01	Shock Assembly, RF30 Bottom	1	33
70-25452-02	Shock Assembly, RF30 Top	1	34

**INDEX BY DEC PART NUMBER
655QR PEDESTAL SYSTEM**

PART NO.	DESCRIPTION	FIG NO.	ITEM NO.
70-25452-03	Shock Assembly, TK50/TK70 Top	1	37
70-25452-04	Shock Assembly, TK50/TK70 Bottom	1	38
70-25453-01	PANEL ASSEMBLY, CONTROL	3	N/A
70-25453-01	PANEL ASSEMBLY, CONTROL	1	7
70-25795-01	Panel Assembly, Front (Replaces 70-25448-01)	1	6
70-26208-01	Plate Assembly, Connector	1	19
74-33477-01	Holder, Battery Pack	2	4
74-33507-01	Panel, Blank Dual	1	Not Shown
74-33573-01	Bracket, TK50/TK70 Top	1	41
74-33573-02	Bracket, TK50/TK70 Bottom	1	42
74-33647-01	Panel, Right Side	5	9
74-33694-01	Panel, Left Side	5	5
74-34061-01	Door	6	1
74-34062-01	Channel	6	8
74-34063-01	Tumbler	6	15
74-34064-01	Latch, Pull	6	14
74-34065-01	Latch, Slide	6	13
74-34066-01	Spring, Channel	6	7
74-34067-01	Bezel, Switch	6	3
74-34068-01	Wheel, Base	4	2
74-34069-01	Shaft, Wheel	4	3
74-34123-01	Bracket, Top Left	6	4
74-34123-02	Bracket, Top Right	6	5
74-34124-01	Bracket, Bottom Left	6	11
74-34124-02	Bracket, Bottom Right	6	12
74-34125-01	Bracket, Side	5	2
74-34126-01	Bracket, Corner	5	1
74-34232-05	Foam, Air Closure	5	12
74-34232-06	Foam, Air Closure	6	18
74-34363-01	Stop, Door Position	6	6
74-34424-01	Sleeve	5	6
74-34432-01	Bracket, Wall Mount	1	Not Shown
74-34846-01	Support, Label	4	5
74-36425-01	Filler, Tape Drive	1	36
74-36456-01	Cover, Top	5	10
74-36457-01	Base	4	1
74-36458-01	Panel, Rear	5	4
74-36459-01	Panel, Front	6	2
74-36498-01	Bracket, RF30	1	43
74-36500-01	Bracket, Control Panel	3	2
74-36643-01	Logo	6	17
74-36712-01	Bracket, Base Mounting	1	14
74-36712-02	Bracket, Base Mounting	1	15
74-36884-07	Medallion, MicroVAX 3800	1	40
74-36884-08	Medallion, VAXserver 3800	1	40
90-00049-30	Screw, Sems Phi Truss Hd No.6-32 x 1/4	1	20
90-00063-78	Screw, Self-Tap Truss Hd No. 6-32 x 5/16	2	9
90-00063-78	Screw, Self-Tap Truss Hd No. 6 x 5/16	3	5
90-06370-08	Screw, Hex Cap Hd No. 1/4-20 x 1/2	1	16
90-06557-00	Nut, Kep No. 4-40	2	6
90-06637-00	Washer, Split	1	17
90-06661-00	Washer, Flat	5	7
90-06661-00	Washer, Flat	1	25

**INDEX BY DEC PART NUMBER
655QR PEDESTAL SYSTEM**

PART NO.	DESCRIPTION	FIG NO.	ITEM NO.
90-07064-00	Plug, Button	1	5
90-08228-00	Tape, Foam	2	8
90-09228-10	Screw, Sems Phi Pan Hd No. 10-32 x 3/8	1	Not Shown
90-09257-05	Ring, Retaining	6	16
90-09385-00	Pin, Roll	4	4
90-09643-00	Screw, Sems Phi Pan Hd No. 4-40 x 3/8	2	7
90-09643-03	Screw, Sems Phi Pan Hd No. 4-40 x 1/2	1	21
90-09800-04	Screw, Self-Tap Phi Pan Hd No. 8-16 x 3/8	6	10
90-09800-04	Screw, Self-Tap Phi Pan Hd No. 8-16 x 3/8	5	3
90-09800-06	Screw, Self-Tap Phi Pan Hd No. 6-19 x 3/8	6	9
90-09800-06	Screw, Self-Tap Phi Pan Hd No. 6-19 x 3/8	4	6
90-09800-08	Screw, Self-Tap Phi Pan Hd No. 8-16 x 1/2	1	26
90-09800-08	Screw, Self-Tap Phi Hd No. 8-16 x 1/2	5	8
90-09984-07	Screw, Self-Tap Truss Hd No. 6-32 x 5/16	2	3
90-10917-01	Screw, Mach Flat Hd (Metric) 02.5M x .08	1	27
BA213-WA	KIT, WALL MOUNT, BA213 LARGE S-BOX	1	Not Shown
EK-213WA-IN	Guide, Wall Mount Installation	1	Not Shown
M7625-AA	Module, Mayfair III CPU	1	3
M7625-BA	Module, Mayfair III CPU	1	4
M7769-00	Module, KFQSA	1	22A
M9047-00	Card, Q-Bus Grant Continuity	1	Not Shown
M9047-SA	KIT, Q-BUS GRANT CONTINUITY	1	Not Shown
M9060-YA	Module, Load	1	35
N/A	655QR PEDESTAL SYSTEM	1	N/A

**INDEX BY DEC PART DESCRIPTION
655QR / PEDESTAL SYSTEM**

DESCRIPTION	DEC PART NO.	FIG. NO.	ITEM NO.
655QR PEDESTAL SYSTEM	N/A	1	N/A
655QR-A2 120V (w/o Skins) (Timeshare)	655QR-A2	1	N/A
655QR-A3 240V (w/o Skins) (Timeshare)	655QR-A3	1	N/A
655QR-B2 120V (w/Skins) (Timeshare)	655QR-B2	1	N/A
655QR-B3 240V (w/Skins) (Timeshare)	655QR-B3	1	N/A
655QR-D2 120V (w/o Skins, Wall Kit) (Timeshare)	655QR-D2	1	N/A
655QR-D3 240V (w/o Skins, Wall Kit) (Timeshare)	655QR-D3	1	N/A
655QR-E2 120V (w/o Skins) (Server)	655QR-E2	1	N/A
655QR-E3 240V (w/o Skins) (Server)	655QR-E3	1	N/A
655QR-F2 120V (w/Skins) (Server)	655QR-F2	1	N/A
655QR-F3 240V (w/Skins) (Server)	655QR-F3	1	N/A
655QR-J2 120V (w/o Skins, Wall Kit) (Server)	655QR-J2	1	N/A
655QR-J3 240V (w/o Skins, Wall Kit) (Server)	655QR-J3	1	N/A
Base	74-36457-01	4	1
BASE ASSEMBLY	70-25434-01	4	N/A
BASE ASSEMBLY	70-25434-01	1	13
Battery, 3 Cell	12-19245-01	2	5
Bezel, Switch	74-34067-01	6	3
Bracket, Base Mounting	74-36712-02	1	15
Bracket, Base Mounting	74-36712-01	1	14
Bracket, Bottom Left	74-34124-01	6	11
Bracket, Bottom Right	74-34124-02	6	12
Bracket, Control Panel	74-36500-01	3	2
Bracket, Corner	74-34126-01	5	1
Bracket, RF30	74-36498-01	1	43
Bracket, Side	74-34125-01	5	2
Bracket, TK50/TK70 Bottom	74-33573-02	1	42
Bracket, TK50/TK70 Top	74-33573-01	1	41
Bracket, Top Left	74-34123-01	6	4
Bracket, Top Right	74-34123-02	6	5
Bracket, Wall Mount	74-34432-01	1	Not Shown
Bulkhead Assembly,	70-23982-03	2	1
Bulkhead Assembly, Front	70-23981-01	1	9
Bulkhead Assembly, Front (w/TK70 Cable Egress)	70-23981-04	1	10
BULKHEAD ASSEMBLY, H3600 MODULE	70-23988-01	2	N/A
Cable Assembly (RF to OCP)	17-01936-01	1	32
Cable Assembly, 06 Conductor	17-00811-02	1	Not Shown
Cable Assembly, 06 Conductor	17-01364-02	1	Not Shown
Cable Assembly, 06 Conductor	17-01364-02	1	Not Shown
Cable Assembly, 06 Conductor	17-00811-02	1	Not Shown
Cable Assembly, 10 Cond (From Backplane to OCP)	17-01964-01	1	23
Cable Assembly, Flat, 50 Conductor	17-01898-01	1	30
Cable Assembly, Flat, 50 Conductor	17-01898-02	1	30
Cable Assembly, Internal DSSI Daisy-Chain 50 Cond Flat	17-01962-01	1	28
Cable Assembly, KFQSA DSSI, 50 Cond Round	17-01931-01	1	22
Cable Assembly, Round (TQKXX to TKXX Drive)	17-01363-01	1	31
Card, Q-Bus Grant Continuity	M9047-00	1	Not Shown
Channel	74-34062-01	6	8
CHASSIS ASSEMBLY	70-25451-01	1	1
CHASSIS ASSEMBLY	70-25451-02	1	1
Connector, 25-Position to 6-Position Adapter	12-23599-05	1	Not Shown

**INDEX BY DEC PART DESCRIPTION
655QR PEDESTAL SYSTEM**

DESCRIPTION	DEC PART NO.	FIG. NO.	ITEM NO.
Connector, 25-Position to 6-Position Adapter	12-23599-05	1	Not Shown
Connector, 25-Position to 6-Position Adapter	12-23599-05	1	Not Shown
Connector, 25-Position to 6-Position Adapter	12-23599-01	1	Not Shown
Connector, 25-Position to 6-Position Adapter	12-23599-05	i	Not Shown
Connector, 25-Position to 6-Position Adapter	12-23599-01	1	Not Shown
Connector, 25-Position to 6-Position Adapter	12-23599-01	1	Not Shown
Connector, Terminator, DSSI	12-29258-01	1	8
Cord, Power	17-00083-11	1	12
Cover, Top	74-36456-01	5	10
Door	74-34061-01	6	1
ENCLOSURE ASSEMBLY, SHELL	70-25432-01	1	24
ENCLOSURE ASSEMBLY, SHELL	70-25432-01	5	N/A
Filler, Tape Drive	74-36425-01	1	36
Foam, Air Closure	74-34232-05	5	12
Foam, Air Closure	74-34232-06	6	18
Guide, Wall Mount Installation	EK-213WA-IN	1	Not Shown
Hardware, Wall Mount	70-24263-01	1	Not Shown
Harness Assembly, DC Storage(From Power Supply to RF and TK)	17-01965-01	1	18
Harness Assembly, Wire 5-Pin to 4-Pin TK Adapter Power	17-01937-01	1	29
Holder, Battery Pack	74-33477-01	2	4
Key, Plastic	12-17119-01	1	Not Shown
Key, Plastic	12-17119-01	1	Not Shown
KIT, ACCESSORY (w/o Skins 120V)	70-24316-01	1	Not Shown
KIT, ACCESSORY (w/o Skins 240V)	70-24316-03	1	Not Shown
KIT, ACCESSORY (w/Skins 120V)	70-24316-02	1	Not Shown
KIT, ACCESSORY (w/Skins 240V)	70-24316-04	1	Not Shown
Kit, Bulkhead Panel	70-24505-02	1	Not Shown
Kit, Bulkhead Panel	70-24505-01	1	Not Shown
KIT, Q-BUS GRANT CONTINUITY	M9047-SA	1	Not Shown
KIT, WALL MOUNT, BA213 LARGE S-BOX	BA213-WA	1	Not Shown
Label, "BA215 Base, 100-120V USA"	36-29305-01	1	Not Shown
Label, "BA215 Base, 220V-240V USA"	36-29305-02	1	Not Shown
Label, "Bar Code"	36-18460-06	1	Not Shown
Label, "Baud Select"	36-26584-01	2	Not Shown
Label, "Control Panel"	36-29341-01	1	Not Shown
Label, "Direct Thermal"	36-28231-08	2	Not Shown
Label, "Dry Ink Foil, Black"	36-27922-01	2	Not Shown
Label, "International	36-20560-54	2	Not Shown
Label, "International	36-20560-53	2	Not Shown
Label, "Kapton, Blank"	36-27920-01	2	Not Shown
Label, "Logo/Model, BA215 MicroVAX III"	36-29304-06	1	Not Shown
Label, "Logo/Model, BA215 VAXserver III"	36-29304-07	1	Not Shown
Label, "Module Number (M9060-YA)"	36-26883-17	1	Not Shown
Label, "Module Number, (KA655-BA)"	36-26883-71	1	Not Shown
Label, "Module Number, (M7655-AA)"	36-26883-70	1	Not Shown
Label, "Module Numbers"	36-26883-18	1	Not Shown
Label, "Over Laminate Polyimide"	36-27921-01	2	Not Shown

INDEX BY DEC PART DESCRIPTION **655QR PEDESTAL SYSTEM**

DESCRIPTION	DEC PART NO.	FIG. NO.	ITEM NO.
Label, "Postcard, FTZ"	36-30422-08	1	Not Shown
Label, "S-Box MU"	36-27923-01	1	Not Shown
Label, "S-Box MU"	36-27923-01	1	Not Shown
Label, "S-Box MU"	36-27923-01	1	Not Shown
Label, "S-Box MU"	36-27923-01	1	Not Shown
Label, "Serial Model, 100V UK"	36-27329-08	1	Not Shown
Label, "Serial/Model, 100V USA"	36-27329-07	1	Not Shown
Label, "Serial/Model, 200 UK"	36-27329-10	1	Not Shown
Label, "Serial/Model, 200V USA"	36-27329-09	1	Not Shown
Label, "Shipping Bracket BA215"	36-29343-01	1	Not Shown
Label, "Warning Equipment Rating 100-120V"	36-17905-16	1	Not Shown
Label, "Warning Equipment Rating 220-240V"	36-17905-17	1	Not Shown
Label, "Wiring Diagram"	36-29233-01	3	7
Label, "BA2XX Rev-Rolled"	36-29163-07	1	Not Shown
Latch, Pull	74-34064-01	6	14
Latch, Slide	74-34065-01	6	13
Lens, Encoder Set	12-26766-19	3	6
Logo	74-36643-01	6	17
Medallion, MicroVAX 3800	74-36884-07	1	40
Medallion, VAXserver 3800	74-36884-08	1	40
MODULE ASSEMBLY, H3600 BULKHEAD	70-23988-01	1	2
Module, KFQSA	M7769-00	1	22A
Module, Load	M9060-YA	1	35
Module, Mayfair III CPU	M7625-BA	1	4
Module, Mayfair III CPU	M7625-AA	1	3
Module, SLU Console	54-17016-01	2	2
Nut, Kep No. 4-40	90-06557-00	2	6
Nut, Retaining	12-27764-01	3	4
Panel, Gap Filler Assembly	70-24071-01	1	11
PANEL ASSEMBLY, CONTROL	70-25453-01	3	N/A
PANEL ASSEMBLY, CONTROL	70-25453-01	1	7
PANEL ASSEMBLY, FRONT	70-25433-01	1	39
PANEL ASSEMBLY, FRONT	70-25433-01	6	N/A
Panel Assembly, Front (Replaces 70-25448-01)	70-25795-01	1	6
Panel, Blank Dual	74-33507-01	1	Not Shown
Panel, DSSI Control	54-17388-01	3	1
Panel, Front	74-36459-01	6	2
Panel, Left Side	74-33694-01	5	5
Panel, Rear	74-36458-01	5	4
Panel, Right Side	74-33647-01	5	9
Pin, Roll	90-09385-00	4	4
Plate Assembly, Connector	70-26208-01	1	19
Plug, Button	90-07064-00	1	5
Ring, Retaining	90-09257-05	6	16
Screw, Hex Cap Hd No. 1/4-20 x 1/2	90-06370-08	1	16
Screw, Mach Flat Hd (Metric) 02.5M x .08	90-10917-01	1	27
Screw, Self-Tap Phi Hd No. 8-16 x 1/2	90-09800-08	5	8
Screw, Self-Tap Phi Pan Hd No. 6-19 x 3/8	90-09800-06	4	6
Screw, Self-Tap Phi Pan Hd No. 6-19 x 3/8	90-09800-06	6	9
Screw, Self-Tap Phi Pan Hd No. 8-16 x 1/2	90-09800-08	1	26
Screw, Self-Tap Phi Pan Hd No. 8-16 x 3/8	90-09800-04	5	3
Screw, Self-Tap Phi Pan Hd No. 8-16 x 3/8	90-09800-04	6	10

**INDEX BY DEC PART DESCRIPTION
655QR PEDESTAL SYSTEM**

DESCRIPTION	DEC PART NO.	FIG. NO.	ITEM NO.
Screw, Self-Tap Truss Hd No. 6 x 5/16	90-00063-78	3	5
Screw, Self-Tap Truss Hd No. 6-32 x 5/16	90-00063-78	2	9
Screw, Sems Phl Pan Hd No. 10-32 x 3/8	90-09228-10	1	Not Shown
Screw, Sems Phl Pan Hd No. 4-40 x 1/2	90-09643-03	1	21
Screw, Sems Phl Pan Hd No. 4-40 x 3/8	90-09643-00	2	7
Screw, Sems Phl Truss Hd No. 6-32 x 1/4	90-00049-30	1	20
Screw, Shoulder Socket Hd No. 6-32	12-29665-01	3	3
Screw, Thread Rolling Shoulder	12-26868-01	5	11
Screw, Self-Tap Truss Hd No. 6-32 x 5/16	90-09984-07	2	3
Screwdriver, Flat Blade	47-00042-01	1	Not Shown
Screwdriver, Flat Blade	47-00042-01	1	Not Shown
Screwdriver, Flat Blade	47-00042-01	1	Not Shown
Screwdriver, Flat Blade	47-00042-01	1	Not Shown
Shaft, Wheel	74-34069-01	4	3
Shock Assembly, RF30 Bottom	70-25452-01	1	33
Shock Assembly, RF30 Top	70-25452-02	1	34
Shock Assembly, TK50/TK70 Bottom	70-25452-04	1	38
Shock Assembly, TK50/TK70 Top	70-25452-03	1	37
Sleeve	74-34424-01	5	6
Spring, Channel	74-34066-01	6	7
Stop, Door Position	74-34363-01	6	6
Support, Label	74-34846-01	4	5
Tape, Foam	90-08228-00	2	8
Tumbler	74-34063-01	6	15
Washer, Flat	90-06661-00	5	7
Washer, Flat	90-06661-00	1	25
Washer, Split	90-06637-00	1	17
Wheel, Base	74-34068-01	4	2