



# ILLUSTRATED PARTS BREAKDOWN

# 640QR PEDESTAL SYSTEM

## HOW TO USE THE IPB

### GENERAL

This IPB is compiled following the organization and nomenclature of the engineering drawing structure.

### MAJOR ASSEMBLY LOCATOR (When Applicable)

The Major Assembly Locator (first illustration) is an index that provides a description and a figure reference for all illustrations used in this manual.

### INDENTED PARTS LIST

This manual identifies each assembly being broken down (figure reference callout), and all parts of that assembly. Further breakdown of an assembly is shown by an asterisk (\*) preceding the item callouts in the Description Column. The number of asterisks preceding an item is used to denote the subordination of that item with respect to the Major Assembly. A single asterisk preceding an item description indicates that the item is part of the major assembly being illustrated. Items that are subordinate to single asterisks items, are denoted by two asterisks (\*\*) and immediately follow the related single asterisk item. This system of part identification provides a means for the user to identify the next higher assembly item and make alternate selections for parts when the required replacement part of assembly is not immediately available.

### COLUMN CALLOUT DESCRIPTION

**Figure and Item** - Indicates the figure number and item number of each part.

**Description** - Lists the name of the part and pertinent specifications (when required). Asterisks preceding the description denote the subordination of the part to the next higher assembly.

**DEC Part No.** - Lists the Digital part ordering number. A blank in this column indicates a Digital part number was not assigned at the time of publication.

**ECO Cut-In** - The notation at the top of this column indicates the ECO level of the system (option), at which the IPB was initially prepared. Subsequent ECO level designations, that modify existing parts or add new parts to the device, are inserted in the ECO Cut-In column next to the part that is added or modified.

**Used On Code** - Letters in this column correspond to the variation codes assigned in Figure 1. Parts with an Alpha notation(s) are used only in those option variations. A blank indicates that the part is used on all option variations.

**Ref Fig No.** - A cross reference between illustrations. For each Major Assembly, the number in this column denotes the figure of the next higher assembly. For all subassemblies, the number in this column denotes the figure showing additional detailed breakdown.

**PART NUMBER/PART DESCRIPTION INDEX SECTION**  
Parts are indexed both numerically and alphabetically by description, referenced to a location within the IPB, by figure number and item number.

## REVISION HISTORY

PRINTING	ECO LEVEL			DATE	OTHER IPB MANUALS REFERENCED
2nd Printing	640QR	00000-00003		05-OCT-90	EK-BA215-IP
	70-25775	00000-00004			
	70-25453	00000-00000			
	70-25434	00000-00000			
	70-25432	00000-00001			
	70-25433	00000-00001			

Digital Equipment Corporation reserves the right, without notice, to make substitutions and modifications in the specifications of products documented in this manual and further reserves the right to withdraw any of these products from the market without notice.

Digital Equipment Corporation is not responsible for errors which may appear in the technical description (including illustrations and photographs) of the products covered by this manual.

None of the descriptions contained in this manual imply the granting of any license whatsoever to make, use or sell equipment constructed in accordance therewith.

**Restricted Rights:** Use, duplication or disclosure by the U.S. Government is subject to restrictions as set forth in subparagraph (c) (1) (ii) of the Rights in Technical Data and Computer Software clause at DFARS 252.227-2713.

Copyright © 1989, 1990 by Digital Equipment Corporation. All rights reserved.

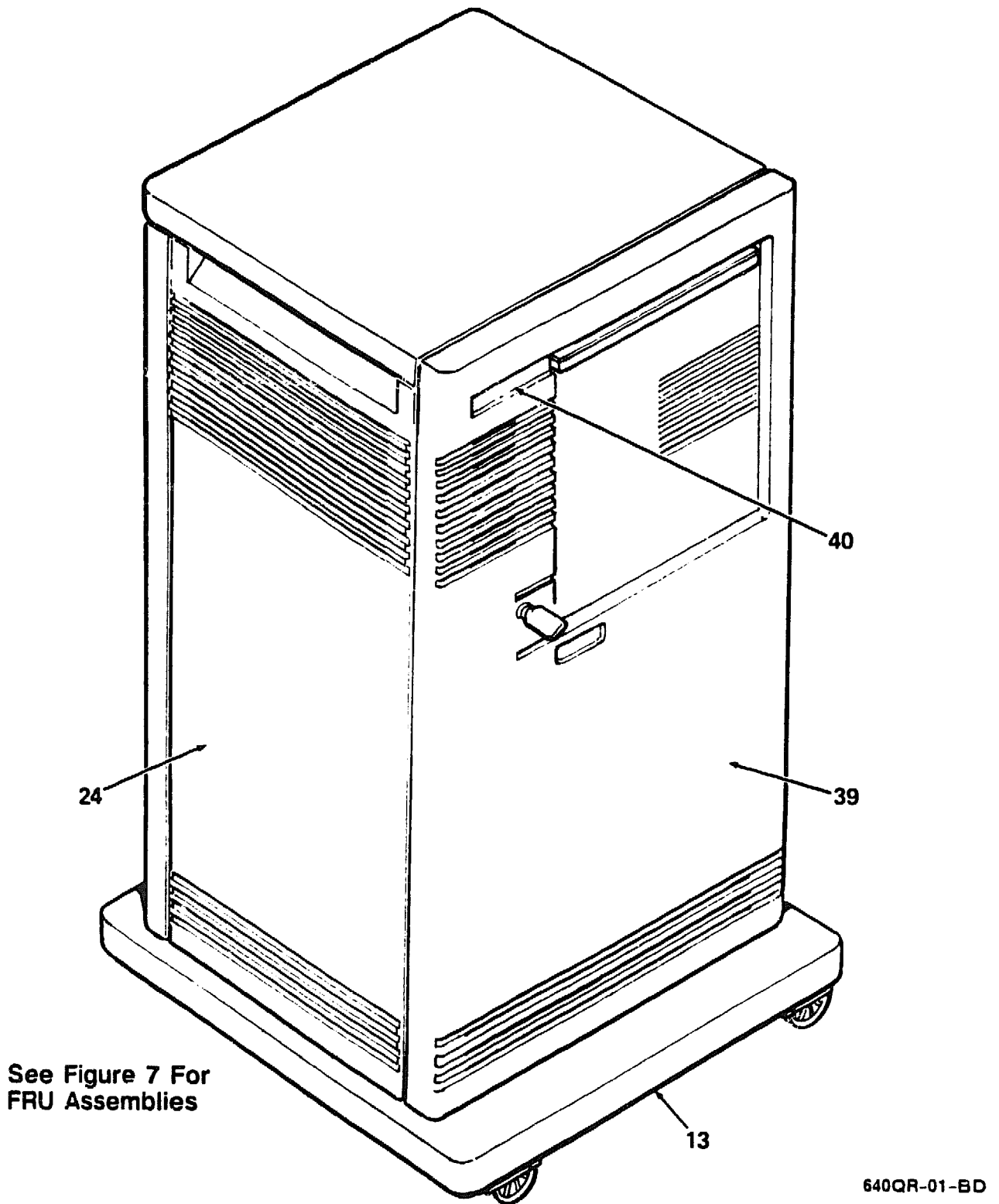
The postage-paid **READER'S COMMENTS** form on the last page of this document requests your critical evaluation to assist us in preparing future documentation.

The following are trademarks of Digital Equipment Corporation :

---

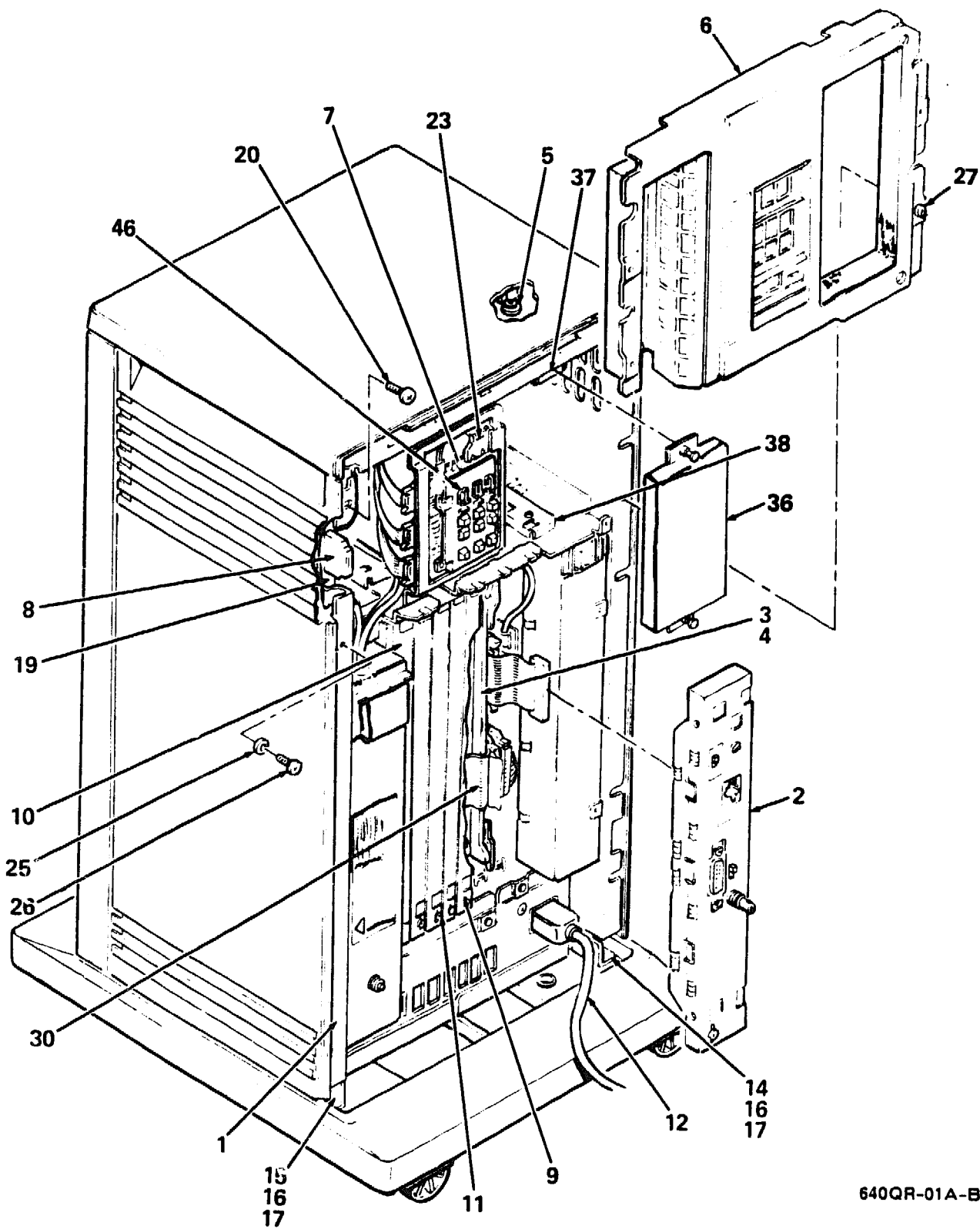


DEBET  
DSSI  
MicroVAX  
Q-bus  
rtVAX  
TK  
TQK  
VAXserver



**Figure 1. 640QR Pedestal System (Sheet 1 of 3)**

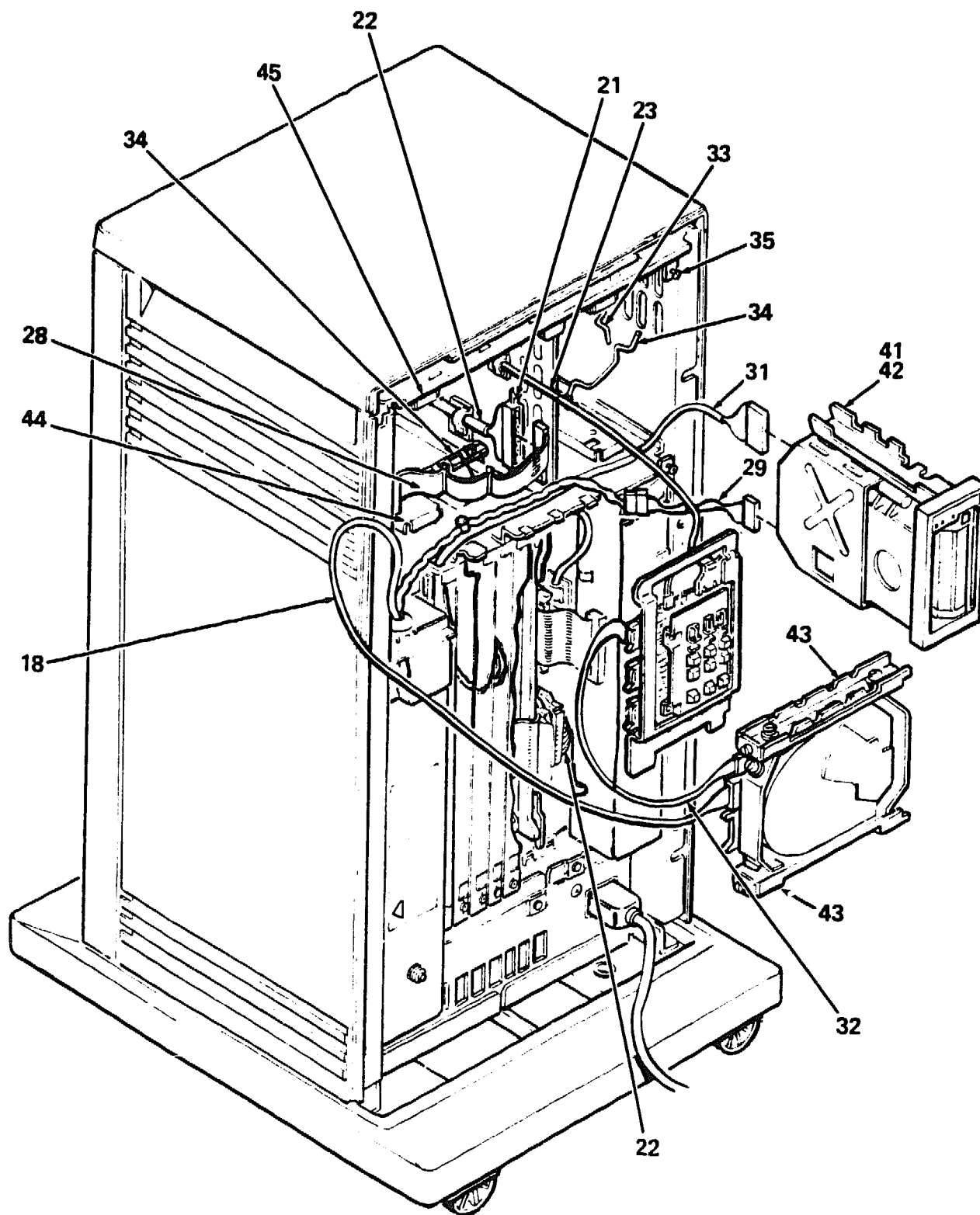
**PARTS LIST**



640QR-01A-BD

Figure 1. 640QR Pedestal System (Sheet 2 of 3)

# PARTS LIST



640QR-01B-BD

Figure 1. 640QR Pedestal System (Sheet 3 of 3)

PARTS LIST

FIG.& ITEM NO.	DESCRIPTION	DEC PART NO.	ECO CUT-IN 640QR 00000	USED ON CODE	REF FIG NO.
1-	640QR PEDESTAL SYSTEM				
	Code A - Used on 640QR-A2 120V (w/o Skins) (Timeshare)	640QR-A2		A	
	Code B - Used on 640QR-A3 240V (w/o Skins) (Timeshare)	640QR-A3		B	
	Code C - Used on 640QR-B2 120V (w/Skins) (Timeshare)	640QR-B2		C	
	Code D - Used on 640QR-B3 240V (w/Skins) (Timeshare)	640QR-B3		D	
	Code E - Used on 640QR-D2 120V (w/o Skins, Wall Kit) (Timeshare)	640QR-D2		E	
	Code F - Used on 640QR-D3 240V (w/o Skins, Wall Kit) (Timeshare)	640QR-D3		F	
	Code G - Used on 640QR-E2 120V (w/o Skins) (Server)	640QR-E2		G	
	Code H - Used on 640QR-E3 240V (w/o Skins) (Server)	640QR-E3		H	
	Code J - Used on 640QR-F2 120V (w/Skins) (Server)	640QR-F2		J	
	Code K - Used on 640QR-F3 240V (w/Skins) (Server)	640QR-F3		K	
	Code L - Used on 640QR-J2 120V (w/o Skins, Wall Kit) (Server)	640QR-J2		L	
	Code M - Used on 640QR-J3 240V (w/o Skins, Wall Kit) (Server)	640QR-J3		M	
1	*Chassis Assembly (See IPB Manual EK-BA215-IP)	70-25451-01		ACEGJL	
	*Chassis Assembly (See IPB Manual EK-BA215-IP)	70-25451-02		BDFHKM	
2	*MODULE ASSEMBLY, H3602 BULKHEAD	70-25775-01			2
3	*Module Mayfair II CPU (Replaces M7624-AA)	M7624-CA	00001	A-F	
4	*Module Mayfair II CPU (Replaces M7624-BA)	M7624-DA	00001	G-M	
5	*Plug, Button	90-07004-00		ABEFG HLM	
6	*Panel Assembly, Mass Storage (Replaces 70-25448-01)	70-25795-01	00001		
7	*PANEL ASSEMBLY, CONTROL	70-25453-01			3
8	*Terminator, DSSI	12-29258-01			
9	*Bulkhead Assembly, Front	70-23981-01			

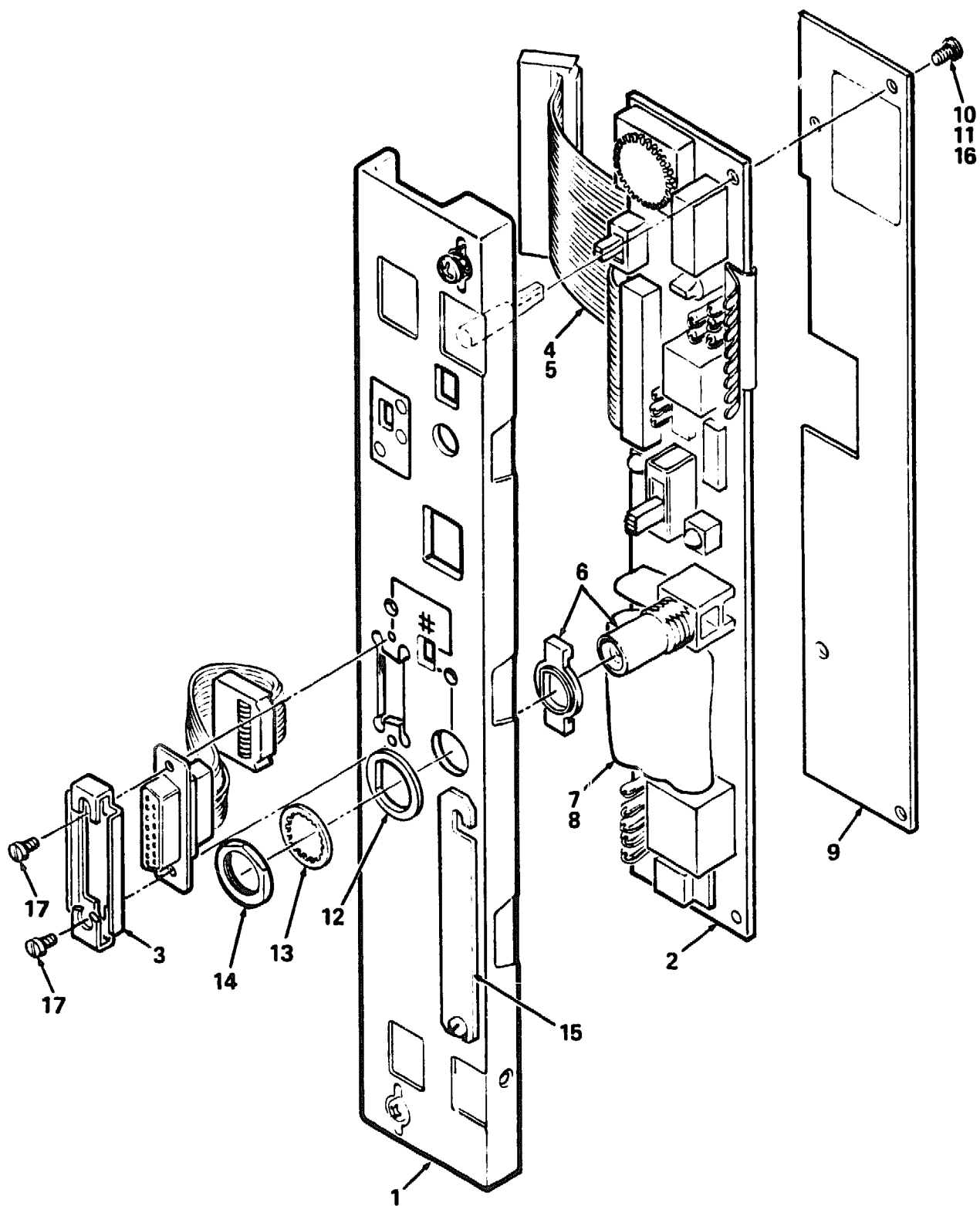
FIG.& ITEM NO.	DESCRIPTION	DEC PART NO.	ECO CUT-IN 640QR 00000	USED ON CODE	REF FIG NO.
1-					
10	*Bulkhead Assembly, Front (w/TK70 Cable Egress)	70-23981-04			
11	*Filler, Panel Assembly Gap	70-24071-01			
12	*Cord, Power	17-00083-11		ACEGJL	
13	*BASE ASSEMBLY	70-25434-01		CDJK	4
14	*Bracket, Base Mounting	74-36712-01		CDJK	
15	*Bracket, Base Mounting	74-36712-02		CDJK	
16	*Screw, Phi Pan Hd No. 1/4 x 1/2	90-06370-08		CDJK	
17	*Washer, Split Lock	90-06637-00		CDJK	
18	*Harness Assembly, DC Storage (From Power Supply to RF and TK)	17-01965-01			
19	*Plate Assembly, Connector	70-26208-01			
20	*Screw, Sems Phi Truss Hd No. 6-32 x 1/4	90-00049-30			
21	*Screw, Sems Phi Pan Hd No. 4-40 x 1/2	90-09643-03			
22	*Cable Assembly, KA640 DSSI, 50 Cond Round	17-01963-01			
23	*Cable Assembly, Flat Ribbon 10 Cond (From Backplane to OCP)	17-01964-01			
24	*ENCLOSURE ASSEMBLY, SHELL	70-25432-01		CDJK	5
25	*Washer, Flat	90-06661-00		CDJK	
26	*Screw, Self Tap Pan Hd No. 8-16 x 1/2	90-09800-08		CDJK	
27	*Screw, Mach Flat Hd (Metric) 02.5M x .08	90-10917-01			
28	*Cable Assembly, Internal DSSI Daisy-Chain 50 Cond Flat	17-01962-01			
29	*Cable Assembly, 5-Pin to 4-Pin TK Adaptor Power	17-01937-01			
30	*Cable Assembly, Flat 50 Conductor	17-01898-01			
	*Cable Assembly, Flat 50 Conductor	17-01898-02			
31	*Cable Assembly, Round (TKQXX to TKXX Drive) (See Note 2)	17-01363-01			
32	*Cable Assembly (RF to OCP) (See Note 2)	17-01936-01			
33	*Top Assembly (Weldment) (See Note 2)	70-25445-01			
34	*Bracket Assembly, Shipping (See Note 2)	70-25444-01			
35	*Screw, Slotted Fillister Hd No. 6-32 x 5/16 (See Note 2)	12-27451-01			
36	*Filler, Tape Drive (See Note 1)	74-36425-01			
37	*Shock Assembly, TK50/TK70 Top (See Note 1)	70-25452-03			
38	*Shock Assembly, TK50/TK70 Bottom (See Note 1)	70-25452-04			



FIG.& ITEM NO.	DESCRIPTION	DEC PART NO.	ECO CUT-IN 640QR 00000	USED ON CODE	REF FIG NO.
1-					
39	*PANEL ASSEMBLY, FRONT	70-25433-01		CDJK	6
40	*Medallion, MicroVAX 3300	74-36884-01		CD	
	*Medallion, VAXserver 3300	74-36884-02		JK	
	*Medallion, rtVAX 3300	74-36884-03		JK	
41	*Bracket, TK50/TK70 Top (See Note 2)	74-33573-01			
42	*Bracket, TK50/TKK70 Bottom (See Note 2)	74-33573-02			
43	*Bracket, RF30 (See Note 2)	74-36498-01			
44	*Shock Assembly, RF30 Bottom (See Note 2)	70-25452-01			
45	*Shock Assembly, RF30 Top (See Note 2)	70-25452-02			
46	*Lens, Encoder Set	12-28766-19			
	NOTE 1: Installed When No Tape Drive Is Used.				
	NOTE 2 : Items Shown For Reference Only.				
	KITS (Not Shown)				
	*KIT, BA213 LARGE S-BOX WALL MOUNT	BA213-WA		EFLM	
	**Documentation, "Wall Mount Installation Guide"	EK-BA200-IN			
	**Hardware, Wall Mount	70-24263-01			
	**Bracket, Wall Mount	74-34432-01			
	***Screw, Sems Phi Pan Hd No. 10-32 . 3/8	90-09228-10			
	*KIT, ACCESSORY	70-25760-01		AEGL	
	**Cable Assembly, 06 Conductor	17-00811-03			
	**Screwdriver, Flat Blade	47-00042-00			
	**Label, "S-Box"	36-27923-01			
	**Label, "S-Box"	36-27923-02			
	**Label, "Bar Code"	36-18460-06			
	**Label, "BA2XX Rev"	36-29164-07			
	**Tee, BNC Coaxial	12-25869-01			
	**Connector, BNC Coaxial	12-26318-01			
	**Connector, 25-Position to 6 Position Adapter	12-23599-01			

FIG. & ITEM NO.	DESCRIPTION	<sup>C</sup> DEC PART NO.	ECO CUT-IN 640QR 00000	USED ON CODE	REF FIG NO.
1-	*KIT, ACCESSORY	70-25760-02		CJ	
	**Cable Assembly, 06 Conductor	17-00811-03			
	**Key, Plastic	12-17119-01			
	**Screwdriver, Flat Blade	47-00042-00			
	**Label, "S-Box"	36-27923-01			
	**Label, "S-Box"	36-27923-02			
	**Label, "Bar Code"	36-18460-06			
	**Label, "BA2XX Rev"	36-29164-07			
	**Tee, BNC Coaxial	12-25869-01			
	**Connector, BNC Coaxial	12-26318-01			
	**Connector, 25-Position to 6 Position Adapter	12-23599-01			
	*KIT, ACCESSORY	70-25760-03		BFHM	
	**Cable Assembly, 06 Conductor	17-01364-02			
	**Screwdriver, Flat Blade	47-00042-00			
	**Label, "S-Box"	36-27923-01			
	**Label, "S-Box"	36-27923-02			
	**Label, "Bar Code"	36-18460-06			
	**Label, "BA2XX Rev"	36-29164-07			
	**Tee, BNC Coaxial	12-25869-01			
	**Connector, BNC Coaxial	12-26318-01			
	**Connector, 25-Position to 6 Position Adapter	12-23599-01			
	*KIT, ACCESSORY	70-25760-04		DK	
	**Cable Assembly, 06 Conductor	17-01364-02			
	**Key, Plastic	12-17119-01			
	**Screwdriver, Flat Blade	47-00042-00			
	**Label, "S-Box"	36-27923-01			
	**Label, "S-Box"	36-27923-02			
	**Label, "Bar Code"	36-18460-06			
	**Label, "BA2XX Rev"	36-29164-07			
	**Tee, BNC Coaxial	12-25869-01			
	**Connector, BNC Coaxial	12-26318-01			
	**Connector, 25-Position to 6 Position Adapter	12-23599-01			

FIG.& ITEM NO.	DESCRIPTION	DEC PART NO.	ECO CUT-IN 640QR 00000	USED ON CODE	REF FIG NO.
1-	<p>*KIT, Q-bus GRANT CONTINUITY KIT</p> <p>**Card, Q-Bus Grant Continuity</p> <p>**Panel, Blank Dual</p> <p>**Kit, Bulkhead Panel</p> <p>**Kit, Bulkhead Panel</p> <p>**Label, "Module Number"</p> <p><b>LABELS (Not Shown)</b></p> <p>*Label, "Module Number. M7642-CA, KA640" (Replaces 36-26883-55)</p> <p>*Label, "Module Number. M7642-DA, KA640" (Replaces 36-26883-69)</p> <p>*Label, "Warning Equipment Rating 100-120V"</p> <p>*Label, "Warning Equipment Rating 220-240V"</p> <p>*Label, "Serial/Model, 100V USA"</p> <p>*Label, "Serial/Model, 100V UK"</p> <p>*Label, "Serial/Model, 200V USA"</p> <p>*Label, "Serial/Model, 200V UK"</p> <p>*Label, "BA215 Base, 100-120V USA"</p> <p>*Label, "BA215 Base, 220-240V USA"</p> <p>*Label, "BA215 Base, 100-120V UK"</p> <p>*Label, "BA215 Base, 100-120V UK"</p> <p>*Label, "BA215 MicroVAX 3300"</p> <p>*Label, "BA215 VAXserver 3300"</p> <p>*Label, "BA215 rtVAX 3300"</p> <p>*Label, "Shipping Bracket BA215"</p> <p>*Label, "BA2XX Rev"</p> <p>*Label, "Control Panel BA215"</p> <p>*Label, "Bar Code"</p> <p>*Label, "Telecom, Japan" (added)</p> <p>*Label, "Preinstalled Software" (added)</p> <p>*Label, "Postcard FTZ" (added)</p> <p><b>DOCUMENTATION (Not Shown)</b></p> <p>*Documentation, MicroVAX Installation Checklist (added)</p>	<p>M9047-SA</p> <p>M9047-00</p> <p>74-33507-01</p> <p>70-24505-01</p> <p>70-24505-02</p> <p>36-26883-18</p> <p>36-26883-97</p> <p>36-26883-98</p> <p>36-17905-16</p> <p>36-17905-17</p> <p>36-27329-07</p> <p>36-27329-08</p> <p>36-27329-09</p> <p>36-27329-10</p> <p>36-29305-01</p> <p>36-29305-02</p> <p>36-29305-03</p> <p>36-29305-04</p> <p>36-29304-01</p> <p>36-29304-02</p> <p>36-29304-05</p> <p>36-29343-01</p> <p>36-29163-07</p> <p>36-29341-01</p> <p>36-18460-06</p> <p>36-33180-12</p> <p>36-28979-01</p> <p>36-30422-08</p> <p>EK-176AA-RC</p>	<p>00001</p> <p>00001</p> <p>00002</p> <p>00002</p> <p>00002</p>	<p>G-M</p> <p>A-F</p> <p>G-M</p> <p>ACEGJL BDFHKM ACEGJL ACEGJL BDFHKM BDFHKM CJ DK CJ DK ABEF GHLM GHLM</p> <p>ACEGJL</p>	



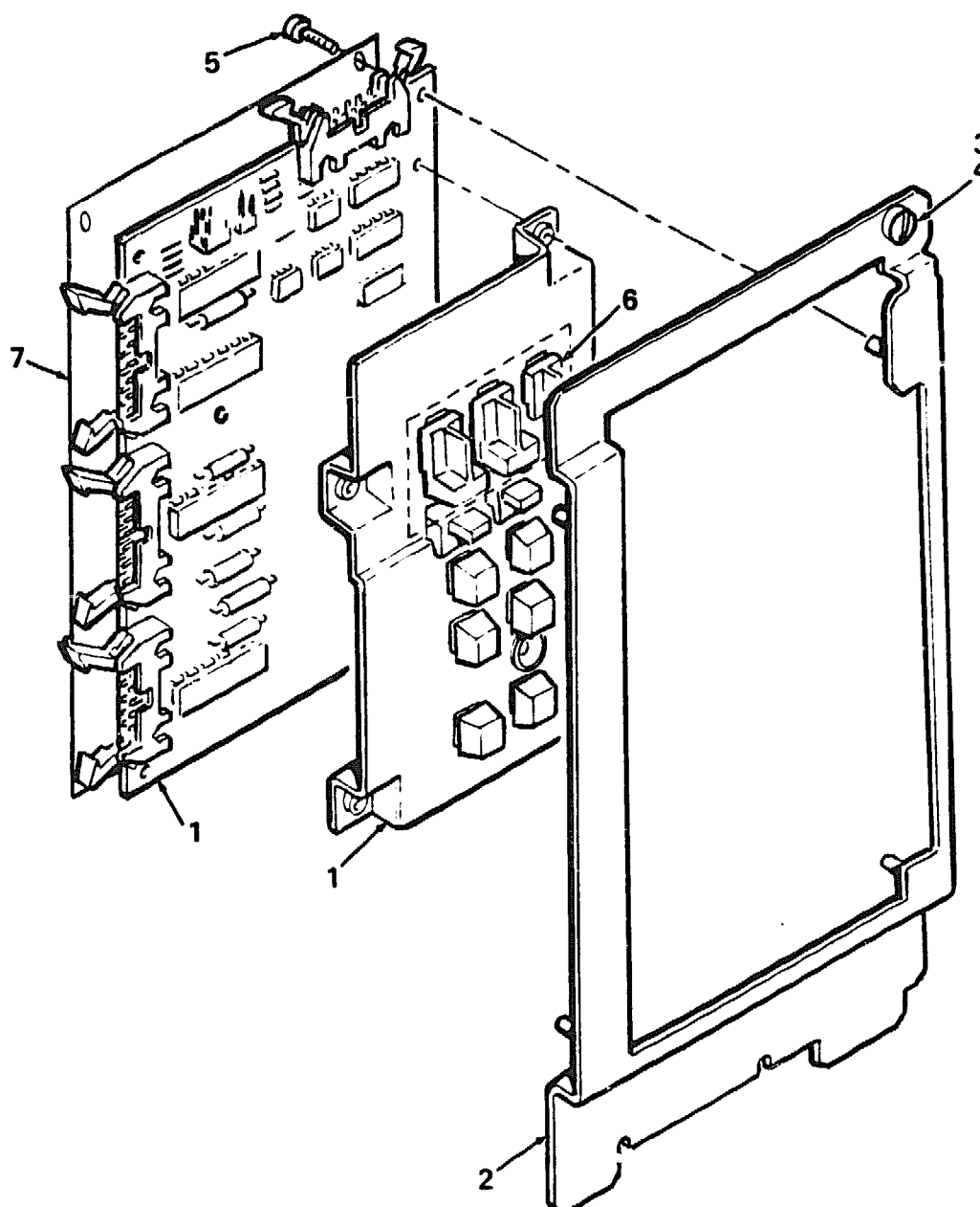
640QR-02-BD

**Figure 2. Module Assembly, H3602 Bulkhead**

**PARTS LIST**

FIG. & ITEM NO.	DESCRIPTION	DEC PART NO.	E ECO CUT-IN 70-25775 00000	USED ON CODE	REF FIG NO.
2-	MODULE ASSEMBLY, H3602 BULKHEAD	70-25775-01			1
1	*Bulkhead Assembly, Front Dual (Replaces 70-23982-09)	70-23982-11	00003		
2	*Module, SLU Console (Replaces 54-17381-01)	54-17381-02	00003		
3	*Latch Assembly, Slide	12-18489-03			
4	*Cable Assembly (Replaces 17-02130-01)	17-01032-03	00003		
5	*Tape, Foam (deleted)	90-08228-00	00003		
6	*Decoupler, Coaxial	12-30222-01			
7	*Battery, 3 Cell 3.75V	12-19245-01			
8	*Tape, Velcro	12-26595-02			
9	*Insulator, Shield (Replaces 74-37167-01)	74-37167-02	00003		
10	*Washer, Internal Tooth Lock No.01 (deleted)	90-08636-00	00001		
11	*Screw, Phi Flat Hd No. 6-32 x 5/16 (deleted)	90-08404-02	00001		
12	*Bushing, Mylar	12-20575-01			
13	*Washer, BNC Internal Tooth Lock	90-00037-05			
14	*Nut, Hex No. 1/2-28	90-10563-01			
15	*Carrier, Label (deleted)	74-34429-01	00003		
16	*Screw, Self-Tap Truss Hd No. 6 x 5/16 (Replaces 90-09643-00)	90-00063-78	00003		
17	*Latch Assembly, Post	12-18489-04			
	LABELS (Not Shown)				
	*Label, "Baud Select"	36-26584-01			
	*Label, "Debet Ethernet Address" (deleted)	36-25542-02	00004		
	*Label, "Direct Thermal" (deleted)	36-28321-08	00003		

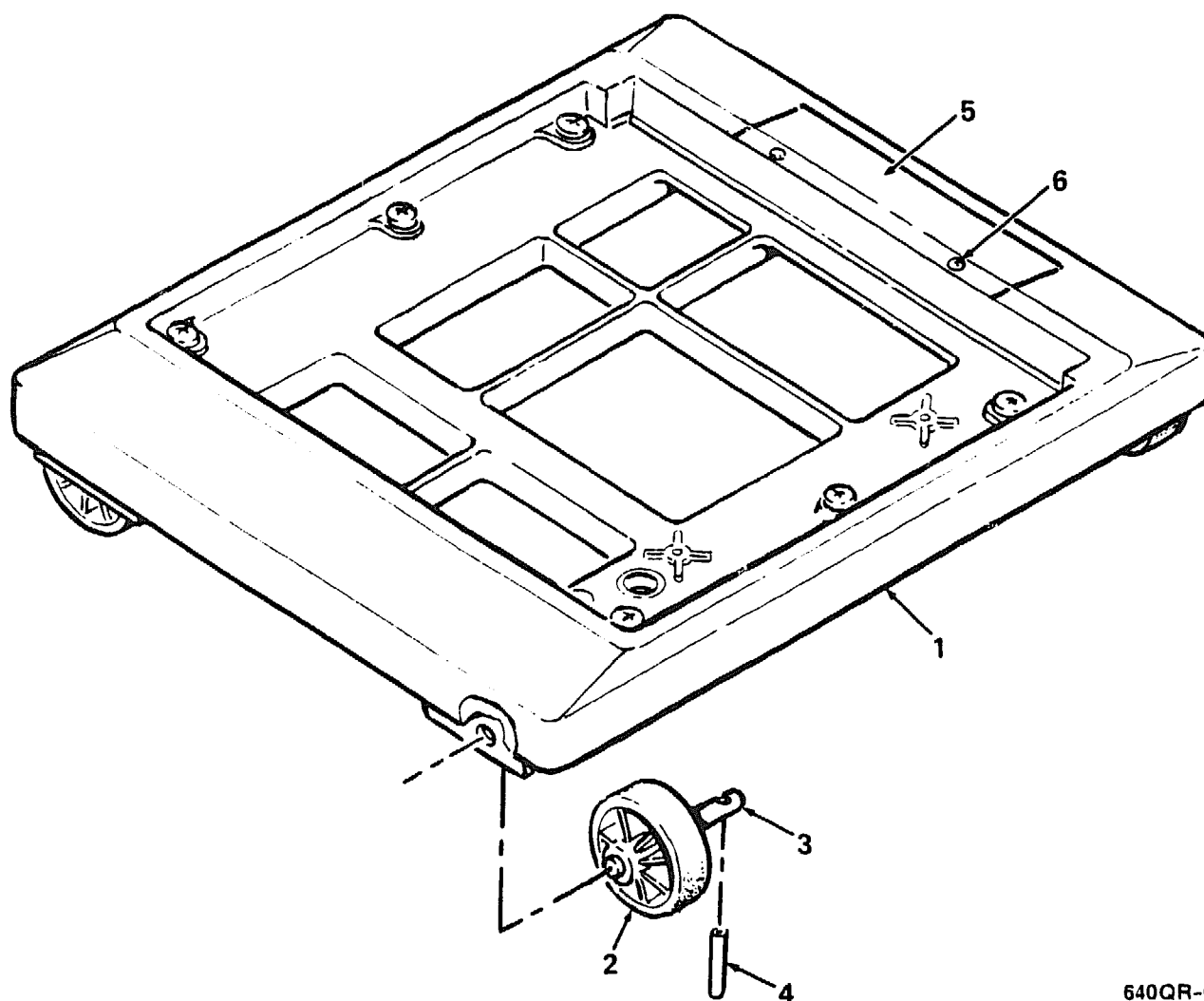
FIG. & ITEM NO.	DESCRIPTION	DEC PART NO.	A ECO CUT-IN 70-25453 00000	USED ON CODE	REF FIG NO.
3-	PANEL ASSEMBLY, CONTROL	70-25453-01			1
1	*Panel, DSSI Control	54-17388-01			
2	*Bracket, Control Panel	74-36500-01			
3	*Screw, Shoulder Socket Hd No. 6-32 x .068	12-29665-01			
4	*Nut, Retaining	12-27764-01			
5	*Screw, Self Tap Truss Hd No. 6 x 5/16	90-00063-78			
6	*Lens, Encoder Set (Shown for reference only)	12-28766-19			
7	*Label, "Wiring Diagram"	36-29233-01			



640QR-03-BD

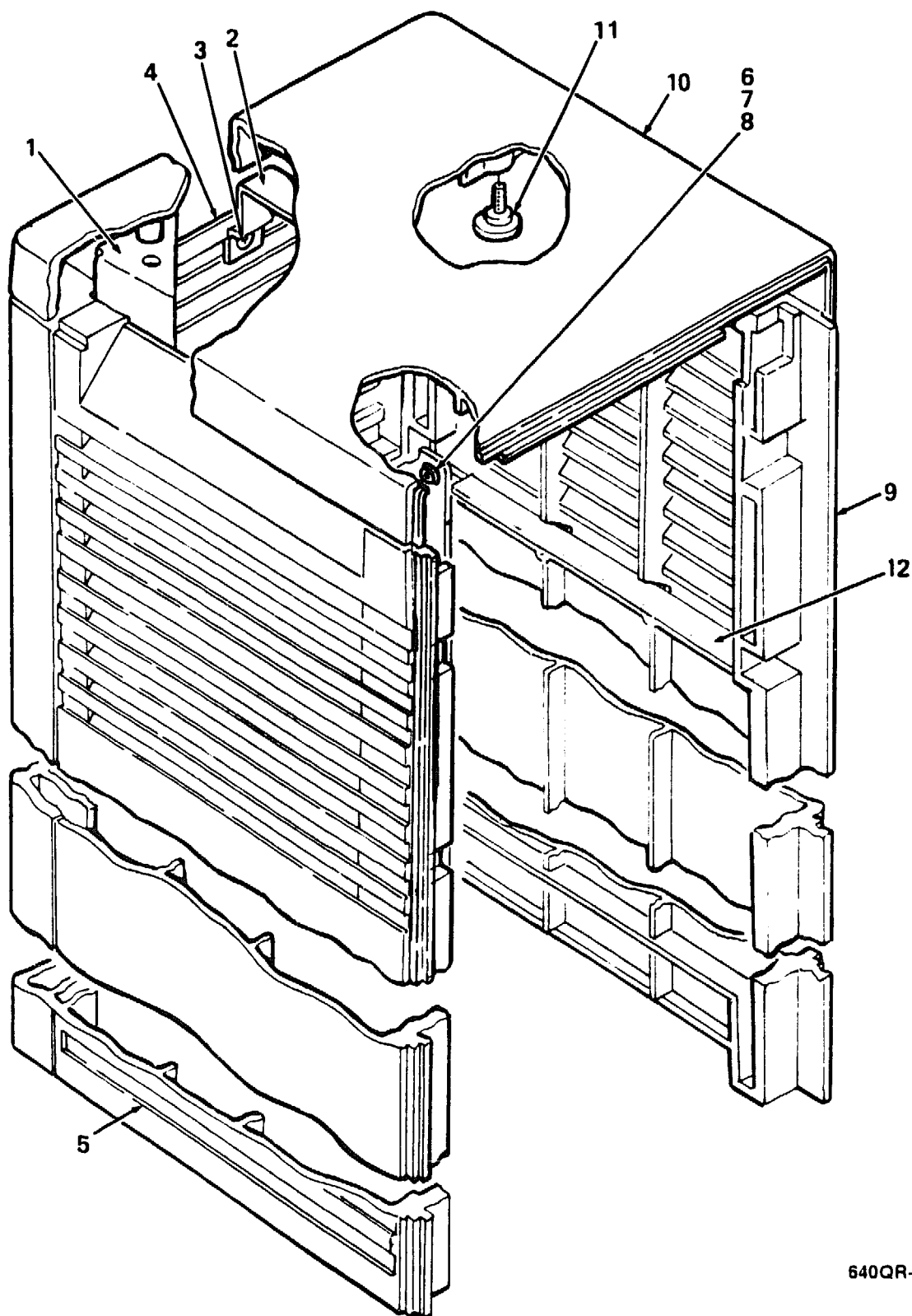
**Figure 3. Panel Assembly, Control**

FIG. & ITEM NO.	DESCRIPTION	DEC PART NO.	A ECO CUT-IN 70-25434 00000	USED ON CODE	REF FIG NO.
4-	BASE ASSEMBLY	70-25434-01			1
1	*Base	74-36457-01			
2	*Wheel, Base	74-34068-01			
3	*Shaft, Wheel	74-34069-01			
4	*Pin, Roll	90-09385-00			
5	*Support, Label	74-34846-01			
6	*Screw, Self-Tap Phi Pan Hd No. 6-19 x 3/8	90-09800-06			



640QR-04-BD

**Figure 4. Base Assembly**

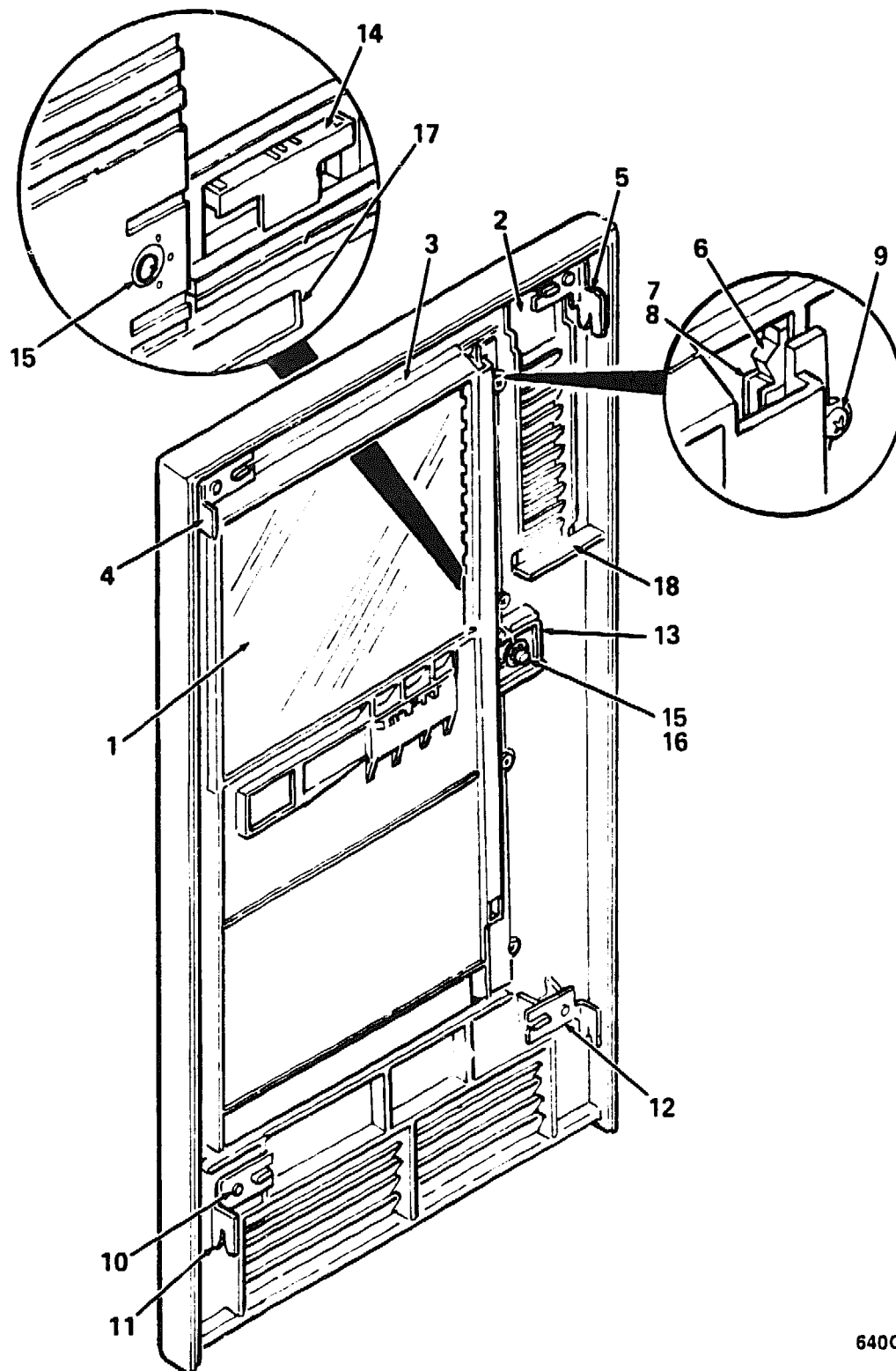


640QR-05-BD

**Figure 5. Enclosure Assembly, Shell**  
**PARTS LIST**



FIG. & ITEM NO.	DESCRIPTION	DEC PART NO.	ECO CUT-IN 70-25432 00000	USED ON CODE	REF FIG NO.
5-	ENCLOSURE ASSEMBLY, SHELL	70-25432-01			1
1	*Bracket, Corner	74-34126-01			
2	*Bracket, Side	74-34125-01			
3	*Screw, Self-Tap Phl Pan Hd No. 8-16 x 3/8	90-09800-04			
4	*Panel, Rear	74-36458-01			
5	*Panel, Left Side	74-33694-01			
6	*Sleeve	74-34424-01			
7	*Washer, Flat	90-06661-00			
8	*Screw, Self-Tap Phl Hd No. 8-16 x 1/2	90-09800-08			
9	*Panel, Right Side	74-33647-01			
10	*Cover, Top	74-36456-01			
11	*Screw, Thread Rolling Shoulder	12-26868-01			
12	*Foam, BA215 Rear Air Closure (added)	74-34232-05	00001		

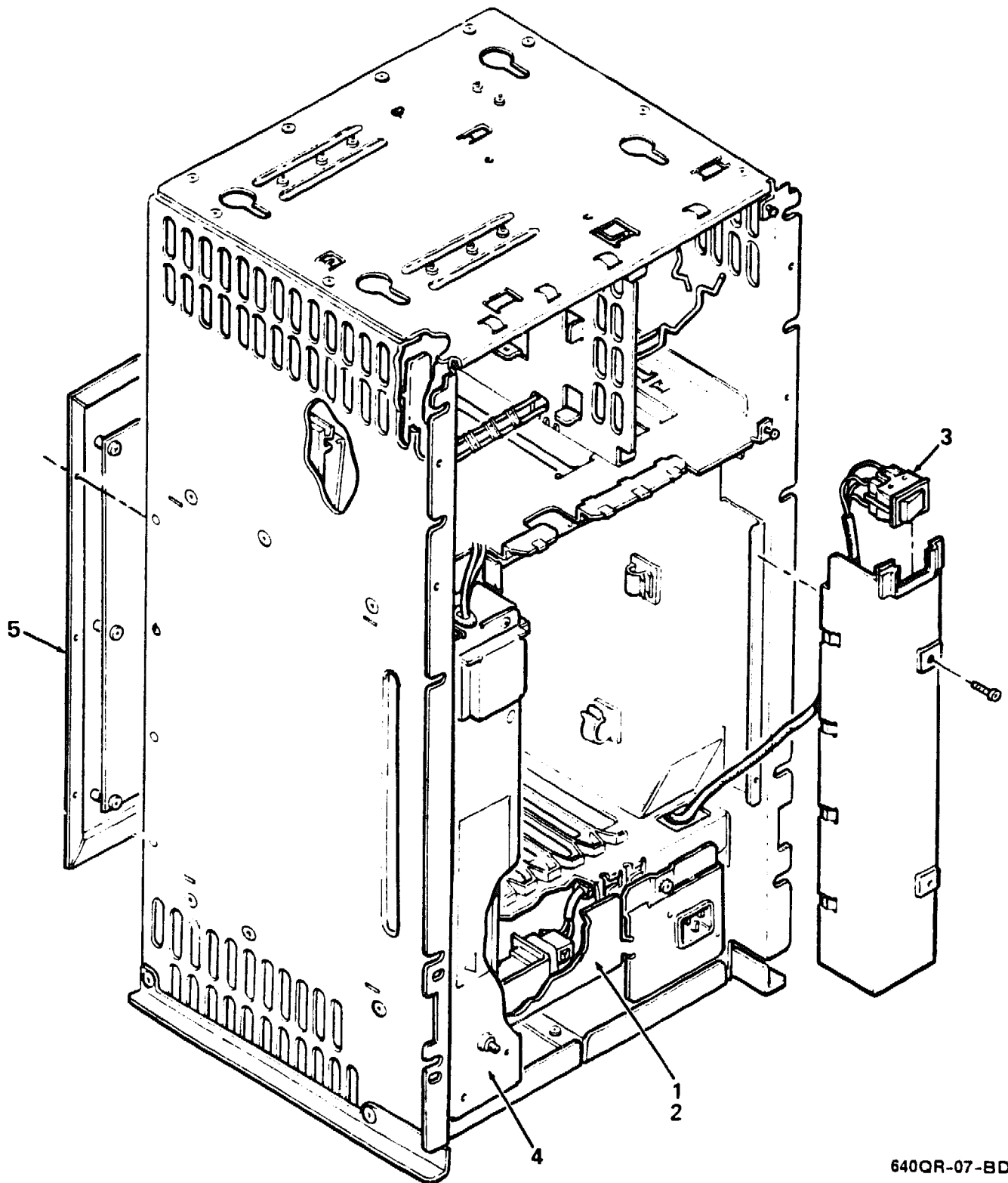


640QR-06-BD

**Figure 6. Panel Assembly, Front**

PARTS LIST

FIG.& ITEM NO.	DESCRIPTION	DEC PART NO.	ECO CUT-IN 70-25433 00000	USED ON CODE	REF FIG NO.
6-	PANEL ASSEMBLY, FRONT	70-25433-01			1
1	*Door	74-34061-01			
2	*Panel, Front	74-36459-01			
3	*Bezel, Switch	74-34067-01			
4	*Bracket, Top Left	74-34123-01			
5	*Bracket, Top Right	74-34123-02			
6	*Stop, Door Position	74-34363-01			
7	*Spring, Channel	74-34066-01			
3	*Channel	74-34062-01			
9	*Screw, Self-Tap Phl Pan Hd No. 6-19 x 3/8	90-09800-06			
10	*Screw, Self-Tap Phl Pan Hd No. 8-16 x 3/8	90-09800-04			
11	*Bracket, Bottom Left	74-34124-01			
12	*Bracket, Bottom Right	74-34124-02			
13	*Latch, Slide	74-34065-01			
14	*Latch, Pull	74-34064-01			
15	*Tumbler	74-34063-01			
16	*Ring, Retaining	90-09257-05			
17	*Logo	74-36643-01			
18	*Foam, BA215 Front Air Closure (added)	74-34232-06	00001		



640QR-07-BD

**Figure 7. FRU Assemblies**

PARTS LIST



## **PART NUMBER/DESCRIPTION INDEX**



# **INDEX BY DEC PART NUMBER** **640QR PEDESTAL SYSTEM**

<b>PART NO.</b>	<b>DESCRIPTION</b>	<b>FIG NO.</b>	<b>ITEM NO.</b>
12-17119-01	Key, Plastic	1	Not Shown
12-18489-03	Latch Assembly, Slide	2	3
12-18489-04	Latch Assembly, Post	2	17
12-19245-01	Battery, 3 Cell 3.75V	2	7
12-20575-01	Bushing, Mylar	2	12
12-23599-01	Connector, 25-Position to 6 Position Adapter	1	Not Shown
12-25869-01	Tee, BNC Coaxial	1	Not Shown
12-28318-01	Connector, BNC Coaxial	1	Not Shown
12-25595-02	Tape, Velcro	2	8
12-26868-01	Screw, Thread Rolling Shoulder	5	11
12-27451-01	Screw, Slotted Fillister Hd No. 6-32 x 5/16	1	35
12-27764-01	Nut, Retaining	3	4
12-28766-19	Lens, Encoder Set	1	46
12-28766-19	Lens, Encoder Set (Shown for reference only)	3	6
12-29258-01	Terminator, DSSI	1	8
12-29665-01	Screw, Shoulder Socket Hd No. 6-32 x .068	3	3
12-30222-01	Decoupler, Coaxial	2	6
17-00083-11	Cord, Power	1	12
17-00811-03	Cable Assembly, 06 Conductor	1	Not Shown
17-01032-03	Cable Assembly (Replaces 17-02130-01)	2	4
17-01363-01	Cable Assembly, Round (TKKXX to TKXX Drive)	1	31
17-01364-02	Cable Assembly, 06 Conductor	1	Not Shown
17-01898-01	Cable Assembly, Flat 50 Conductor	1	30
17-01898-02	Cable Assembly, Flat 50 Conductor	1	30
17-01936-01	Cable Assembly (RF to OCP)	1	32
17-01937-01	Cable Assembly, 5-Pin to 4-Pin	1	29
	TK Adapter Power		
17-01938-01	Harness Assembly, Wire	7	3
17-01962-01	Cable Assembly, Internal DSSI Daisy-Chain 50 Cond Flat	1	28
17-01963-01	Cable Assembly, KA640 DSSI, 50 Cond Round	1	22
17-01964-01	Cable Assembly, Flat Ribbon 10 Cond (From Backplane to OCP)	1	23
17-01965-01	Harness Assembly, DC Storage (From Power Supply to RF and TK)	1	18
36-17905-16	Label, "Warning Equipment Rating 100-120V"	1	Not Shown
36-17905-17	Label, "Warning Equipment Rating 220-240V"	1	Not Shown
36-18460-06	Label, "Bar Code"	1	Not Shown
36-18460-06	Label, "Bar Code"	1	Not Shown
36-25542-02	Label, "Debet Ethernet Address" (deleted)	2	Not Shown
36-26584-01	Label, "Baud Select"	2	Not Shown
36-26883-18	Label, "Module Number"	1	Not Shown
36-26883-97	Label, "Module Number. M7642-CA, KA640" (Replaces 36-26883-55)	1	Not Shown
36-26883-98	Label, "Module Number. M7642-DA, KA640" (Replaces 36-26883-69)	1	Not Shown
36-27329-07	Label, "Serial/Model, 100V USA"	1	Not Shown
36-27329-08	Label, "Serial/Model, 100V UK"	1	Not Shown
36-27329-09	Label, "Serial/Model, 200V USA"	1	Not Shown
36-27329-10	Label, "Serial/Model, 200V UK"	1	Not Shown
36-27923-01	Label, "S-Box"	1	Not Shown
36-27923-02	Label, "S-Box"	1	Not Shown
36-28321-08	Label, "Direct Thermal" (deleted)	2	Not Shown
36-28979-01	Label, "Preinstalled Software" (added)	1	Not Shown

# **INDEX BY DEC PART NUMBER** **640QR PEDESTAL SYSTEM**

<b>PART NO.</b>	<b>DESCRIPTION</b>	<b>FIG NO.</b>	<b>ITEM NO.</b>
36-29163-07	Label, "BA2XX Rev"	1	Not Shown
36-29164-07	Label, "BA2XX Rev"	1	Not Shown
36-29233-01	Label, "Wiring Diagram"	3	7
36-29304-01	Label, "BA215 MicroVAX 3300"	1	Not Shown
36-29304-02	Label, "BA215 VAXserver 3300"	1	Not Shown
36-29304-05	Label, "BA215 rtVAX 3300"	1	Not Shown
36-29305-01	Label, "BA215 Base, 100-120V USA"	1	Not Shown
36-29305-02	Label, "BA215 Base, 220-240V USA"	1	Not Shown
36-29305-03	Label, "BA215 Base, 100-120V UK"	1	Not Shown
36-29305-04	Label, "BA215 Base, 100-120V UK"	1	Not Shown
36-29341-01	Label, "Control Panel BA215"	1	Not Shown
36-29343-01	Label, "Shipping Bracket BA215"	1	Not Shown
36-30422-08	Label, "Postcard FTZ" (added)	1	Not Shown
36-33180-12	Label, "Telecom, Japan" (added)	1	Not Shown
47-00042-00	Screwdriver, Flat Blade	1	Not Shown
54-17381-02	Module, SLU Console (Replaces 54-17381-01)	2	2
54-17388-01	Panel, DSSI Control	3	1
640QR-A2	640QR-A2 120V (w/o Skins) (Timeshare)	1	N/A
640QR-A3	640QR-A3 240V (w/o Skins) (Timeshare)	1	N/A
640QR-B2	640QR-B2 120V (w/Skins) (Timeshare)	1	N/A
640QR-B3	640QR-B3 240V (w/Skins) (Timeshare)	1	N/A
640QR-D2	640QR-D2 120V(w/o Skins, Wall Kit) (Timeshare)	1	N/A
640QR-D3	640QR-D3 240V(w/o Skins, Wall Kit) (Timeshare)	1	N/A
640QR-E2	640QR-E2 120V (w/o Skins) (Server)	1	N/A
640QR-E3	640QR-E3 240V (w/o Skins) (Server)	1	N/A
640QR-F2	640QR-F2 120V (w/Skins) (Server)	1	N/A
640QR-F3	640QR-F3 240V (w/Skins) (Server)	1	N/A
640QR-J2	640QR-J2 120V (w/o Skins, Wall Kit) (Server)	1	N/A
640QR-J3	640QR-J3 240V (w/o Skins, Wall Kit) (Server)	1	N/A
70-23981-01	Bulkhead Assembly, Front	1	9
70-23981-04	Bulkhead Assembly, Front (w/TK70 Cable Egress)	1	10
70-23982-11	Bulkhead Assembly, Front Dual (Replaces 70-23982-09)	2	1
70-24071-01	Filler, Panel Assembly Gap	1	11
70-24263-01	Hardware, Wall Mount	1	Not Shown
70-24505-01	Kit, Bulkhead Panel	1	Not Shown
70-24505-02	Kit, Bulkhead Panel	1	Not Shown
70-25432-01	ENCLOSURE ASSEMBLY, SHELL	1	24
70-25432-01	ENCLOSURE ASSEMBLY, SHELL	5	N/A
70-25433-01	PANEL ASSEMBLY, FRONT	6	N/A
70-25433-01	PANEL ASSEMBLY, FRONT	1	39
70-25434-01	BASE ASSEMBLY	1	13
70-25434-C1	BASE ASSEMBLY	4	N/A
70-25444-01	Bracket Assembly, Shipping	1	34
70-25445-01	Top Assembly (Weldment)	1	33
70-25447-01	Backplane Assembly	7	5
70-25449-01	Fan Tube Axial 4 1/2 Inch	7	2
70-25451-01	Chassis Assembly	1	1
70-25451-02	Chassis Assembly	1	1
70-25452-01	Shock Assembly, RF30 Bottom	1	44
70-25452-02	Shock Assembly, RF30 Top	1	45
70-25452-03	Shock Assembly, TK50/TK70 Top	1	37



**INDEX BY DEC PART NUMBER  
640QR PEDESTAL SYSTEM**

<b>PART NO.</b>	<b>DESCRIPTION</b>	<b>FIG NO.</b>	<b>ITEM NO.</b>
70-25452-04	Shock Assembly, TK50/TK70 Bottom	1	38
70-25453-01	PANEL ASSEMBLY, CONTROL	3	N/A
70-25453-01	PANEL ASSEMBLY, CONTROL	1	7
70-25454-01	Tray Assembly, Fan	7	1
70-25760-01	KIT, ACCESSORY	1	Not Shown
70-25760-02	KIT, ACCESSORY	1	Not Shown
70-25760-03	KIT, ACCESSORY	1	Not Shown
70-25760-04	KIT, ACCESSORY	1	Not Shown
70-25775-01	MODULE ASSEMBLY, H3602 BULKHEAD	2	N/A
70-25775-01	MODULE ASSEMBLY, H3602 BULKHEAD	1	2
70-25795-01	Panel Assembly, Mass Storage (Replaces 70-25448-01)	1	6
70-26208-01	Plate Assembly, Connector	1	19
74-33507-01	Panel, Blank Dual	1	Not Shown
74-33573-01	Bracket, TK50/TK70 Top	1	41
74-33573-02	Bracket, TK50/TKK70 Bottom	1	42
74-33647-01	Panel, Right Side	5	9
74-33694-01	Panel, Left Side	5	5
74-34061-01	Door	6	1
74-34062-01	Channel	6	8
74-34063-01	Tumbler	6	15
74-34064-01	Latch, Pull	6	14
74-34065-01	Latch, Slide	6	13
74-34066-01	Spring, Channel	6	7
74-34067-01	Bezel, Switch	6	3
74-34068-01	Wheel, Base	4	2
74-34069-01	Shaft, Wheel	4	3
74-34123-01	Bracket, Top Left	6	4
74-34123-02	Bracket, Top Right	6	5
74-34124-01	Bracket, Bottom Left	6	11
74-34124-02	Bracket, Bottom Right	6	12
74-34125-01	Bracket, Side	5	2
74-34126-01	Bracket, Corner	5	1
74-34232-05	Foam, BA215 Rear Air Closure (added)	5	12
74-34232-06	Foam, BA215 Front Air Closure (added)	6	18
74-34363-01	Stop, Door Position	6	6
74-34424-01	Sleeve	5	6
74-34429-01	Carrier, Label (deleted)	2	15
74-34432-01	Bracket, Wall Mount	1	Not Shown
74-34846-01	Support, Label	4	5
74-36425-01	Filler, Tape Drive	1	36
74-36456-01	Cover, Top	5	10
74-36457-01	Base	4	1
74-36458-01	Panel, Rear	5	4
74-36459-01	Panel, Front	6	2
74-36498-01	Bracket, RF30	1	43
74-36500-01	Bracket, Control Panel	3	2
74-36643-01	Logo	6	17
74-36712-01	Bracket, Base Mounting	1	14
74-36712-02	Bracket, Base Mounting	1	15
74-36884-01	Medallion, MicroVAX 3300	1	40
74-36884-02	Medallion, VAXserver 3300	1	40
74-36884-03	Medallion, rtVAX 3300	1	40
74-37167-02	Insulator, Shield (Replaces 74-37167-01)	2	9

**INDEX BY DEC PART NUMBER**  
**640QR PEDESTAL SYSTEM**

<b>PART NO.</b>	<b>DESCRIPTION</b>	<b>FIG NO.</b>	<b>ITEM NO.</b>
90-00037-05	Washer, BNC Internal Tooth Lock	2	13
90-00049-30	Screw, Sems Phi Truss Hd No. 6-32 x 1/4	1	20
90-00063-78	Screw, Self-Tap Truss Hd No. 6 x 5/16 (Replaces 90-09643-00)	2	16
90-00063-78	Screw, Self Tap Truss Hd No. 6 x 5/16	3	5
90-06370-08	Screw, Phi Pan Hd No. 1/4 x 1/2	1	16
90-06636-00	Washer, Internal Tooth Lock No. 01 (deleted)	2	10
90-06637-00	Washer, Split Lock	1	17
90-06661-00	Washer, Flat	1	25
90-06661-00	Washer, Flat	5	7
90-07004-00	Plug, Button	1	5
90-08228-00	Tape, Foam (deleted)	2	5
90-08404-02	Screw, Phi Flat Hd No. 6-32 x 5/16 (deleted)	2	11
90-09228-10	Screw, Sems Phi Pan Hd No. 10-32 x 3/8	1	Not Shown
90-09257-05	Ring, Retaining	6	16
90-09385-00	Pin, Roll	4	4
90-09643-03	Screw, Sems Phi Pan Hd No. 4-40 x 1/2	1	21
90-09800-04	Screw, Self-Tap Phi Pan Hd No. 8-16 x 3/8	5	3
90-09800-04	Screw, Self-Tap Phi Pan Hd No. 8-16 x 3/8	6	10
90-09800-06	Screw, Self-Tap Phi Pan Hd No. 6-19 x 3/8	6	9
90-09800-06	Screw, Self-Tap Phi Pan Hd No. 6-19 x 3/8	4	6
90-09800-08	Screw, Self-Tap Phi Hd No. 8-16 x 1/2	5	8
90-09800-08	Screw, Self Tap Pan Hd No. 8-16 x 1/2	1	26
90-10563-01	Nut, Hex No. 1/2-28	2	14
90-10917-01	Screw, Mach Flat Hd (Metric) 02.5M x .08	1	27
BA213-WA	KIT, BA213 LARGE S-BOX WALL MOUNT	1	Not Shown
EK-176AA-RC	Documentation, MicroVAX Installation Checklist (added)	1	Not Shown
EK-BA200-IN	Documentation, "Wall Mount Installation Guide"	1	Not Shown
H7868-A	Power Supply Assembly, H7868 100/120V	7	4
H7868-B	Power Supply Assembly, H7868 220/240V	7	4
M7624-CA	Module Mayfair II CPU (Replaces M7624-AA)	1	3
M7624-DA	Module Mayfair II CPU (Replaces M7624-BA)	1	4
M9047-00	Card, Q-Bus Grant Continuity	1	Not Shown
M9047-SA	KIT, Q-BUS GRANT CONTINUITY KIT	1	Not Shown
N/A	640QR PEDESTAL SYSTEM	1	N/A
N/A	FRU ASSEMBLIES (For Reference Only)	7	N/A

**INDEX BY DEC PART DESCRIPTION  
640QR PEDESTAL SYSTEM**

DESCRIPTION	DEC PART NO.	FIG. NO.	ITEM NO.
640QR PEDESTAL SYSTEM	N/A	1	N/A
640QR-A2 120V (w/o Skins) (Timeshare)	640QR-A2	1	N/A
640QR-A3 240V (w/o Skins) (Timeshare)	640QR-A3	1	N/A
640QR-B2 120V (w/Skins) (Timeshare)	640QR-B2	1	N/A
640QR-B3 240V (w/Skins) (Timeshare)	640QR-B3	1	N/A
640QR-D2 120V(w/o Skins, Wall Kit) (Timeshare)	640QR-D2	1	N/A
640QR-D3 240V(w/o Skins, Wall Kit) (Timeshare)	640QR-D3	1	N/A
640QR-E2 120V (w/o Skins) (Server)	640QR-E2	1	N/A
640QR-E3 240V (w/o Skins) (Server)	640QR-E3	1	N/A
640QR-F2 120V (w/Skins) (Server)	640QR-F2	1	N/A
640QR-F3 240V (w/Skins) (Server)	640QR-F3	1	N/A
640QR-J2 120V (w/o Skins, Wall Kit) (Server)	640QR-J2	1	N/A
640QR-J3 240V (w/o Skins, Wall Kit) (Server)	640QR-J3	1	N/A
Backplane Assembly	70-25447-01	7	5
Base	74-36457-01	4	1
BASE ASSEMBLY	70-25434-01	4	N/A
BASE ASSEMBLY	70-25434-01	1	13
Battery, 3 Cell 3.75V	12-19245-01	2	7
Bezel, Switch	74-34067-01	6	3
Bracket Assembly, Shipping	70-25444-01	1	34
Bracket, Base Mounting	74-36712-01	1	14
Bracket, Base Mounting	74-36712-02	1	15
Bracket, Bottom Left	74-34124-01	6	11
Bracket, Bottom Right	74-34124-02	6	12
Bracket, Control Panel	74-36500-01	3	2
Bracket, Corner	74-34126-01	5	1
Bracket, RF30	74-36498-01	1	43
Bracket, Side	74-34125-01	5	2
Bracket, TK50/TK70 Top	74-33573-01	1	41
Bracket, TK50/TKK70 Bottom	74-33573-02	1	42
Bracket, Top Left	74-34123-01	6	4
Bracket, Top Right	74-34123-02	6	5
Bracket, Wall Mount	74-34432-01	1	Not Shown
Bulkhead Assembly, Front	70-23981-01	1	9
Bulkhead Assembly, Front (w/TK70 Cable Egress)	70-23981-04	1	10
Bulkhead Assembly, Front Dual (Replaces 70-23982-09)	70-23982-11	2	1
Bushing, Mylar	12-20575-01	2	12
Cable Assembly (Replaces 17-02130-01)	17-01032-03	2	4
Cable Assembly (RF to OCP)	17-01936-01	1	32
Cable Assembly, 06 Conductor	17-01364-02	1	Not Shown
Cable Assembly, 06 Conductor	17-00811-03	1	Not Shown
Cable Assembly, 5-Pin to 4-Pin TK Adapter Power	17-01937-01	1	29
Cable Assembly, Flat 50 Conductor	17-01898-02	1	30
Cable Assembly, Flat 50 Conductor	17-01898-01	1	30
Cable Assembly, Flat Ribbon 10 Cond (From Backplane to OCP)	17-01964-01	1	23
Cable Assembly, Internal DSSI Daisy-Chain 50 Cond Flat	17-01962-01	1	28
Cable Assembly, KA640 DSSI, 50 Cond Round	17-01963-01	1	22
Cable Assembly, Round (TQKXX to TKXX Drive)	17-01363-01	1	31
Card, Q-Bus Grant Continuity	M9047-00	1	Not Shown
Carrier, Label (deleted)	74-34429-01	2	15
Channel	74-34062-01	6	8
Chassis Assembly	70-25451-02	1	1

**INDEX BY DEC PART DESCRIPTION  
640QR PEDESTAL SYSTEM**

DESCRIPTION	DEC PART NO.	FIG. NO.	ITEM NO.
Chassis Assembly	70-25451-01	1	1
Connector, 25-Position to 6 Position Adapter	12-23599-01	1	Not Shown
Connector, BNC Coaxial	12-26318-01	1	Not Shown
Cord, Power	17-00083-11	1	12
Cover, Top	74-36456-01	5	10
Decoupler, Coaxial	12-30222-01	2	6
Documentation, "Wall Mount Installation Guide"	EK-BA200-IN	1	Not Shown
Documentation, MicroVAX Installation Checklist (added)	EK-176AA-RC	1	Not Shown
Door	74-34061-01	6	1
ENCLOSURE ASSEMBLY, SHELL	70-25432-01	1	24
ENCLOSURE ASSEMBLY, SHELL	70-25432-01	5	N/A
Fan Tube Axial 4 1/2 Inch	70-25449-01	7	2
Filler, Panel Assembly Gap	70-24071-01	1	11
Filler, Tape Drive	74-36425-01	1	36
Foam, BA215 Front Air Closure (added)	74-34232-06	6	18
Foam, BA215 Rear Air Closure (added)	74-34232-05	5	12
FRU ASSEMBLIES (For Reference Only)	N/A	7	N/A
Hardware, Wall Mount	70-24263-01	1	Not Shown
Harness Assembly, DC Storage (From Power Supply to RF and TK)	17-01965-01	1	18
Harness Assembly, Wire	17-01938-01	7	3
Insulator, Shield (Replaces 74-37167-01)	74-37167-02	2	9
Key, Plastic	12-17119-01	1	Not Shown
KIT, ACCESSORY	70-25760-03	1	Not Shown
KIT, ACCESSORY	70-25760-02	1	Not Shown
KIT, ACCESSORY	70-25760-04	1	Not Shown
KIT, ACCESSORY	70-25760-01	1	Not Shown
KIT, BA213 LARGE S-BOX WALL MOUNT	BA213-WA	1	Not Shown
Kit, Bulkhead Panel	70-24505-02	1	Not Shown
Kit, Bulkhead Panel	70-24505-01	1	Not Shown
KIT, Q-BUS GRANT CONTINUITY KIT	M9047-SA	1	Not Shown
Label, "BA215 Base, 100-120V UK"	36-29305-04	1	Not Shown
Label, "BA215 Base, 100-120V UK"	36-29305-03	1	Not Shown
Label, "BA215 Base, 100-120V USA"	36-29305-01	1	Not Shown
Label, "BA215 Base, 220-240V USA"	36-29305-02	1	Not Shown
Label, "BA215 MicroVAX 3300"	36-29304-01	1	Not Shown
Label, "BA215 rtVAX 3300"	36-29304-05	1	Not Shown
Label, "BA215 VAXserver 3300"	36-29304-02	1	Not Shown
Label, "BA2XX Rev"	36-29163-07	1	Not Shown
Label, "BA2XX Rev"	36-29164-07	1	Not Shown
Label, "Bar Code"	36-18460-06	1	Not Shown
Label, "Bar Code"	36-18460-06	1	Not Shown
Label, "Baud Select"	36-26584-01	2	Not Shown
Label, "Control Panel BA215"	36-29341-01	1	Not Shown
Label, "Debet Ethernet Address" (deleted)	36-25542-02	2	Not Shown
Label, "Direct Thermal" (deleted)	36-28321-08	2	Not Shown
Label, "Module Number"	36-26883-18	1	Not Shown
Label, "Module Number, M7642-CA, KA640" (Replaces 36-26883-55)	36-26883-97	1	Not Shown
Label, "Module Number, M7642-DA, KA640" (Replaces 36-26883-69)	36-26883-98	1	Not Shown

**INDEX BY DEC PART DESCRIPTION**  
**640QR PEDESTAL SYSTEM**

DESCRIPTION	DEC PART NO.	FIG. NO.	ITEM NO.
Label, "Postcard FTZ" (added)	36-30422-08	1	Not Shown
Label, "Preinstalled Software" (added)	36-28979-01	1	Not Shown
Label, "S-Box"	36-27923-02	1	Not Shown
Label, "S-Box"	36-27923-01	1	Not Shown
Label, "Serial/Model, 100V UK"	36-27329-08	1	Not Shown
Label, "Serial/Model, 100V USA"	36-27329-07	1	Not Shown
Label, "Serial/Model, 200V UK"	36-27329-10	1	Not Shown
Label, "Serial/Model, 200V USA"	36-27329-09	1	Not Shown
Label, "Shipping Bracket BA215"	36-29343-01	1	Not Shown
Label, "Telecom, Japan" (added)	36-33180-12	1	Not Shown
Label, "Warning Equipment Rating 100-120V"	36-17905-16	1	Not Shown
Label, "Warning Equipment Rating 220-240V"	36-17905-17	1	Not Shown
Label, "Wiring Diagram"	36-29233-01	3	7
Latch Assembly, Post	12-18489-04	2	17
Latch Assembly, Slide	12-18489-03	2	3
Latch, Pull	74-34064-01	6	14
Latch, Slide	74-34065-01	6	13
Lens, Encoder Set	12-28766-19	1	46
Lens, Encoder Set (Shown for reference only)	12-28766-19	3	6
Logo	74-36643-01	6	17
Medallion, MicroVAX 3300	74-36884-01	1	40
Medallion, rtVAX 3300	74-36884-03	1	40
Medallion, VAXserver 3300	74-36884-02	1	40
MODULE ASSEMBLY, H3602 BULKHEAD	70-25775-01	1	2
MODULE ASSEMBLY, H3602 BULKHEAD	70-25775-01	2	N/A
Module Mayfair II CPU (Replaces M7624-AA)	M7624-CA	1	3
Module Mayfair II CPU (Replaces M7624-BA)	M7624-DA	1	4
Module, SLU Console (Replaces 54-17381-01)	54-17381-02	2	2
Nut, Hex No. 1/2-28	90-10563-01	2	14
Nut, Retaining	12-27764-01	3	4
PANEL ASSEMBLY, CONTROL	70-25453-01	1	7
PANEL ASSEMBLY, CONTROL	70-25453-01	3	N/A
PANEL ASSEMBLY, FRONT	70-25433-01	6	N/A
PANEL ASSEMBLY, FRONT	70-25433-01	1	39
Panel Assembly, Mass Storage (Replaces 70-25448-01)	70-25795-01	1	6
Panel, Blank Dual	74-33507-01	1	Not Shown
Panel, DSSI Control	54-17388-01	3	1
Panel, Front	74-36459-01	6	2
Panel, Left Side	74-33694-01	5	5
Panel, Rear	74-36458-01	5	4
Panel, Right Side	74-33647-01	5	9
Pin, Roll	90-09385-00	4	4
Plate Assembly, Connector	70-26208-01	1	19
Plug, Button	90-07004-00	1	5
Power Supply Assembly, H7868 100/120V	H7868-A	7	4
Power Supply Assembly, H7868 220/240V	H7868-B	7	4
Ring, Retaining	90-09257-05	6	16
Screw, Sems Phl Truss Hd No. 6-32 x 1/4	90-00049-30	1	20
Screw, Mach Flat Hd (Metric) 02.5M x .08	90-10917-01	1	27
Screw, Phl Flat Hd No. 6-32 x 5/16 (deleted)	90-08404-02	2	11
Screw, Phl Pan Hd No. 1/4 x 1/2	90-06370-08	1	16
Screw, Self Tap Pan Hd No. 8-16 x 1/2	90-09800-08	1	26

**INDEX BY DEC PART DESCRIPTION  
640QR PEDESTAL SYSTEM**

DESCRIPTION	DEC PART NO.	FIG. NO.	ITEM NO.
Screw, Self Tap Truss Hd No. 6 x 5/16	90-00063-78	3	5
Screw, Self-Tap Phi Hd No. 8-16 x 1/2	90-09800-08	5	8
Screw, Self-Tap Phi Pan Hd No. 6-19 x 3/8	90-09800-06	6	9
Screw, Self-Tap Phi Pan Hd No. 6-19 x 3/8	90-09800-06	4	6
Screw, Self-Tap Phi Pan Hd No. 8-16 x 3/8	90-09800-04	5	3
Screw, Self-Tap Phi Pan Hd No. 8-16 x 3/8	90-09800-04	6	10
Screw, Self-Tap Truss Hd No. 6 x 5/16 (Replaces 90-09643-00)	90-00063-78	2	16
Screw, Sems Phi Pan Hd No. 10-32 x 3/8	90-09228-10	1	Not Shown
Screw, Sems Phi Pan Hd No. 4-40 x 1/2	90-09643-03	1	21
Screw, Shoulder Socket Hd No. 6-32 x .068	12-29665-01	3	3
Screw, Slotted Fillister Hd No. 6-32 x 5/16	12-27451-01	1	35
Screw, Thread Rolling Shoulder	12-26868-01	5	11
Screwdriver, Flat Blade	47-00042-00	1	Not Shown
Shaft, Wheel	74-34069-01	4	3
Shock Assembly, RF30 Bottom	70-25452-01	1	44
Shock Assembly, RF30 Top	70-25452-02	1	45
Shock Assembly, TK50/TK70 Bottom	70-25452-04	1	38
Shock Assembly, TK50/TK70 Top	70-25452-03	1	37
Sleeve	74-34424-01	5	6
Spring, Channel	74-34066-01	6	7
Stop, Door Position	74-34363-01	6	6
Support, Label	74-34846-01	4	5
Tape, Foam (deleted)	90-08228-00	2	5
Tape, Velcro	12-26595-02	2	8
Tee, BNC Coaxial	12-25869-01	1	Not Shown
Terminator, DSSI	12-29258-01	1	8
Top Assembly (Weldment)	70-25445-01	1	33
Tray Assembly, Fan	70-25454-01	7	1
Tumbler	74-34063-01	6	15
Washer, BNC Internal Tooth Lock	90-00037-05	2	13
Washer, Flat	90-06661-00	5	7
Washer, Flat	90-06661-00	1	25
Washer, Internal Tooth Lock No.01 (deleted)	90-06636-00	2	10
Washer, Split Lock	90-06637-00	1	17
Wheel, Base	74-34068-01	4	2