

~~"THE MATERIAL HEREIN IS FOR INFORMATION PURPOSES ONLY AND IS SUBJECT TO CHANGE WITHOUT NOTICE. DIGITAL EQUIPMENT CORPORATION ASSUMES NO RESPONSIBILITY FOR ANY ERRORS WHICH MAY APPEAR HEREIN."~~

***** FIELD MAINTENANCE PRINT SET *****

TABLE OF CONTENTS

E-UA-DEUNA-0-0	DEUNA UNIT ASSY
K-PL-DEUNA-0-DBP	DEUNA UNIT ASSY PARTS LIST
D-AD-7018799-0-0	UNA BULKHEAD ASSY
K-PL-7018799-0-DBP	UNA BULKHEAD ASSY PARTS LIST
D-IA-7018798-0-0	UNA CABLE ASSY
K-PL-7018798-0-DBP	UNA CABLE ASSY PARTS LIST

FOR THE FOLLOWING NUMBERS ENCLOSE UA, KPL, CS:
5415552
M7792
M7793

UNIT VARIATIONS

FIELD MAINTENANCE
PRINT SET
DEUNA
DIGITAL EQUIPMENT
CORPORATION
MP01378

USED ON OPTION/MODEL

DRN.	DATE
R.J. RILEY	1/10/83

CHK'D	DATE
R.J. RILEY	1/10/83

PROJ. ENG.	DATE
M. STECKLAIR	1/10/83

FIELD SERV.	DATE
D. DUNCAN	1/10/83

SHEET 1 OF 1

digital

"THIS DRAWING AND SPECIFICATIONS, HEREIN, ARE THE PROPERTY OF DIGITAL EQUIPMENT CORPORATION AND SHALL NOT BE REPRODUCED OR COPIED OR USED IN WHOLE OR IN PART AS THE BASIS FOR THE MANUFACTURE OR SALE OF ITEMS WITHOUT WRITTEN PERMISSION.
COPYRIGHT ©1983 DIGITAL EQUIPMENT CORPORATION."

1
2
3
4
5
6
7
8
9
10
11
12
13
14
15
16
17
18
19
20
21
22
23
24
25
26
27
28
29
30
31
32
33
34
35
36
37
38
39
40
41
42
43
44
45
46
47
48
49
50
51
52
53
54
55
56
57
58
59
60
61
62
63
64
65
66
67
68
69
70
71
72
73
74
75
76
77
78
79
80
81
82
83
84
85
86
87
88
89
90
91
92
93
94
95
96
97
98
99
100
101
102
103
104
105
106
107
108
109
110
111
112
113
114
115
116
117
118
119
120
121
122
123
124
125
126
127
128
129
130
131
132
133
134
135
136
137
138
139
140
141
142
143
144
145
146
147
148
149
150
151
152
153
154
155
156
157
158
159
160
161
162
163
164
165
166
167
168
169
170
171
172
173
174
175
176
177
178
179
180
181
182
183
184
185
186
187
188
189
190
191
192
193
194
195
196
197
198
199
200
201
202
203
204
205
206
207
208
209
210
211
212
213
214
215
216
217
218
219
220
221
222
223
224
225
226
227
228
229
230
231
232
233
234
235
236
237
238
239
240
241
242
243
244
245
246
247
248
249
250
251
252
253
254
255
256
257
258
259
260
261
262
263
264
265
266
267
268
269
270
271
272
273
274
275
276
277
278
279
280
281
282
283
284
285
286
287
288
289
290
291
292
293
294
295
296
297
298
299
300
301
302
303
304
305
306
307
308
309
310
311
312
313
314
315
316
317
318
319
320
321
322
323
324
325
326
327
328
329
330
331
332
333
334
335
336
337
338
339
340
341
342
343
344
345
346
347
348
349
350
351
352
353
354
355
356
357
358
359
360
361
362
363
364
365
366
367
368
369
370
371
372
373
374
375
376
377
378
379
380
381
382
383
384
385
386
387
388
389
390
391
392
393
394
395
396
397
398
399
400
401
402
403
404
405
406
407
408
409
410
411
412
413
414
415
416
417
418
419
420
421
422
423
424
425
426
427
428
429
430
431
432
433
434
435
436
437
438
439
440
441
442
443
444
445
446
447
448
449
450
451
452
453
454
455
456
457
458
459
460
461
462
463
464
465
466
467
468
469
470
471
472
473
474
475
476
477
478
479
480
481
482
483
484
485
486
487
488
489
490
491
492
493
494
495
496
497
498
499
500
501
502
503
504
505
506
507
508
509
510
511
512
513
514
515
516
517
518
519
520
521
522
523
524
525
526
527
528
529
530
531
532
533
534
535
536
537
538
539
540
541
542
543
544
545
546
547
548
549
550
551
552
553
554
555
556
557
558
559
560
561
562
563
564
565
566
567
568
569
570
571
572
573
574
575
576
577
578
579
580
581
582
583
584
585
586
587
588
589
590
591
592
593
594
595
596
597
598
599
600
601
602
603
604
605
606
607
608
609
610
611
612
613
614
615
616
617
618
619
620
621
622
623
624
625
626
627
628
629
630
631
632
633
634
635
636
637
638
639
640
641
642
643
644
645
646
647
648
649
650
651
652
653
654
655
656
657
658
659
660
661
662
663
664
665
666
667
668
669
670
671
672
673
674
675
676
677
678
679
680
681
682
683
684
685
686
687
688
689
690
691
692
693
694
695
696
697
698
699
700
701
702
703
704
705
706
707
708
709
710
711
712
713
714
715
716
717
718
719
720
721
722
723
724
725
726
727
728
729
730
731
732
733
734
735
736
737
738
739
740
741
742
743
744
745
746
747
748
749
750
751
752
753
754
755
756
757
758
759
760
761
762
763
764
765
766
767
768
769
770
771
772
773
774
775
776
777
778
779
780
781
782
783
784
785
786
787
788
789
790
791
792
793
794
795
796
797
798
799
800
801
802
803
804
805
806
807
808
809
810
811
812
813
814
815
816
817
818
819
820
821
822
823
824
825
826
827
828
829
830
831
832
833
834
835
836
837
838
839
840
84

SIZE	CODE	NUMBER	REV
B	TC	DEUNA-0-1	A

DIST.						
-------	--	--	--	--	--	--

TW

Denby

AUTOMATED BY PRTLST.4Q(50)

P A R T S L I S T

SHEET A1 OF A1

LINE	ITEM	DOCUMENT NUMBER	PART NUMBER	DESCRIPTION	QUANTITY PER VARIATION AA
1	1	E-UA-DEUNA-0-0		OPTION DEUNA	REF
2	2	D-AD-7018799-0-0	7018799-00	UNA BULKHEAD ASSY.	1
3	3	D-UA-M7792-0-0	M7792-00	UNIBUS TO ETHERNET BUS MICROPROC	1
4	4	D-UA-M7793-0-0	M7793-00	M7792 TO ETHERNET BUS LINE UNIT,	1
5	5	SEE NOTE	BC08R-00	I/O CABLE	2
6	7		9006073-03	SCREW,MACH TRUSS PHIL	2
7	8		9007786-00	NUT,U-NUT RETAINER	2
8	9	A-PA-3700713-0-0	3700713-01	PKG COMM OPTION DEUNA-AA	1
9	10	D-IA-7427292-0-DBU	7427292-01	FRAME,I/O DOUBLE QUAD	1
10	12	D-IA-7018798-0-0	7018798-08	UNA BULKHEAD CABLE ASSY.	1
11	13		9906557-00	BAG,POLY RECLOSE 2 MIL THK CLEA	1

12 NOTE: IF BC08R CABLE IS NOT AVAILABLE BC08S-01 MAY BE USED IN ITS PLACE

13 NOTE: ITEMS 7 & 8 TO BE PUT INTO ITEM 13 FOR SHIPPING

14 NOTE: SHIP A COPY OF THE FOLLOWING:E-UA-DEUNA-0-0,EK-DEUNA-UG,B-TC-DEUNA-0-1, WITH THIS OPTION

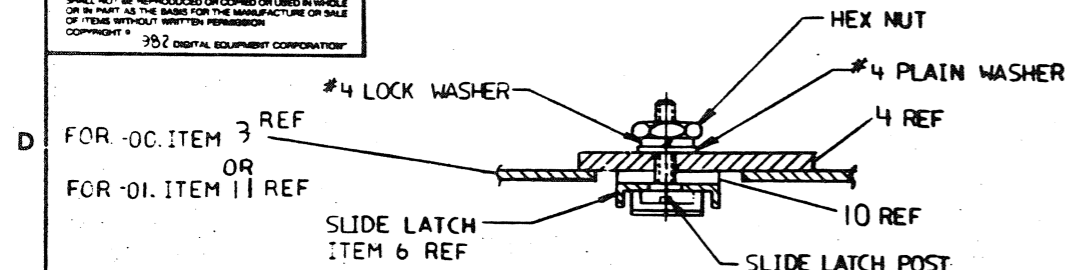
REVISION HISTORY			BASIC PART NO: DEUNA		DRN: R.J. RILEY		DATE: 21-OCT-82		D I G I T A L			
ENG	ECO NUMBER	REV	SECTION A OF A	CHK'D: R.J. RILEY	DATE: 21-OCT-82	TITLE		PARTS LIST				
	INITIAL	A	SECTION. VARIATION INDEX			OPTION DEUNA						
			[A] AA									
			[B]	DES.ENG.: M. STECKLAIR	DATE: 21-OCT-82							
			[C]									
			[D]	RESP.ENG.: M. STECKLAIR	DATE: 21-OCT-82	DOCUMENT NUMBER						
			[E]			SIZE: CODE: NUMBER		REV				
			[F]	MFG.ENG.: D. DUNCAN	DATE: 21-OCT-82	K	PL	DEUNA-0-DBP	A			
				ASSEMBLY NUMBER:	TOP DOCUMENT NUMBER:	FILE NAME:		EDIT #				
				E-UA-DEUNA-0-0		Z5475A.PLS		8				
"THIS DRAWING AND SPECIFICATIONS HEREIN, ARE THE PROPERTY OF DIGITAL EQUIPMENT CORPORATION AND SHALL NOT BE REPRODUCED OR COPIED OR USED IN WHOLE OR IN PART AS THE BASIS FOR THE MANUFACTURE OR SALE OF ITEMS WITHOUT WRITTEN PERMISSION. COPYRIGHT (C) 1983. DIGITAL EQUIPMENT CORPORATION "												

THIS DRAWING AND SPECIFICATIONS HEREIN ARE THE PROPERTY OF DIGITAL EQUIPMENT CORPORATION AND SHALL NOT BE REPRODUCED OR COPIED OR USED IN WHOLE OR IN PART AS THE BASIS FOR THE MANUFACTURE OR SALE OF ITEMS WITHOUT WRITTEN PERMISSION
COPYRIGHT © 1982 DIGITAL EQUIPMENT CORPORATION

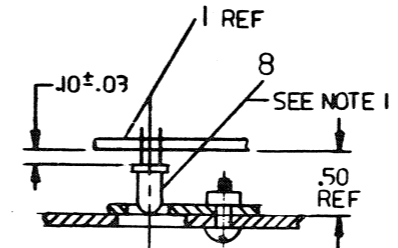
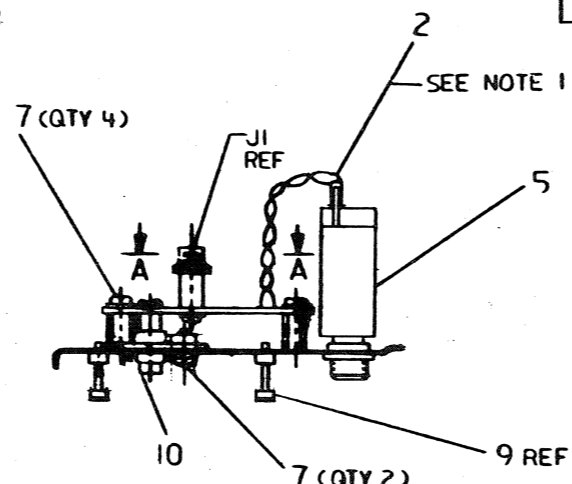
LEGEND		REV
7018799-00	AS SHOWN	B1
7018799-01	USED ON DECISA OPTIONS	B1

NOTES:

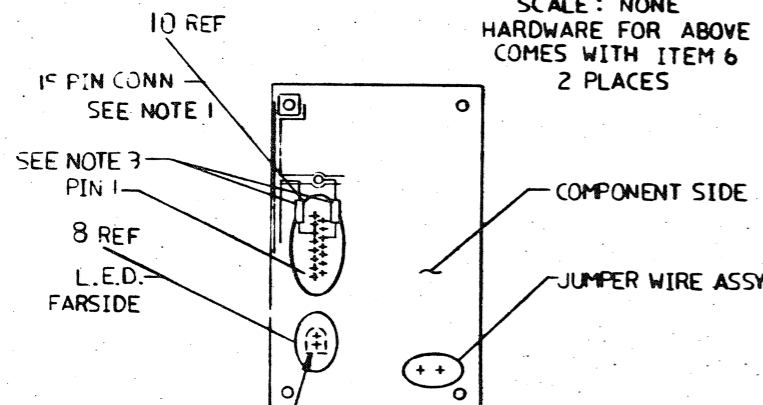
1. VIEW A-A IS FOR LOCATION POINTS FOR ITEMS 2, 8 AND 10.
2. MARK DEC PART NO. & REV LEVEL PER DEC STD 178.
3. ADD CAPACITOR (ITEM 12) FROM PIN 6 TO GROUND ETCH AND FROM PIN 13 TO GROUND ETCH AND SOLDER AT EITHER END.



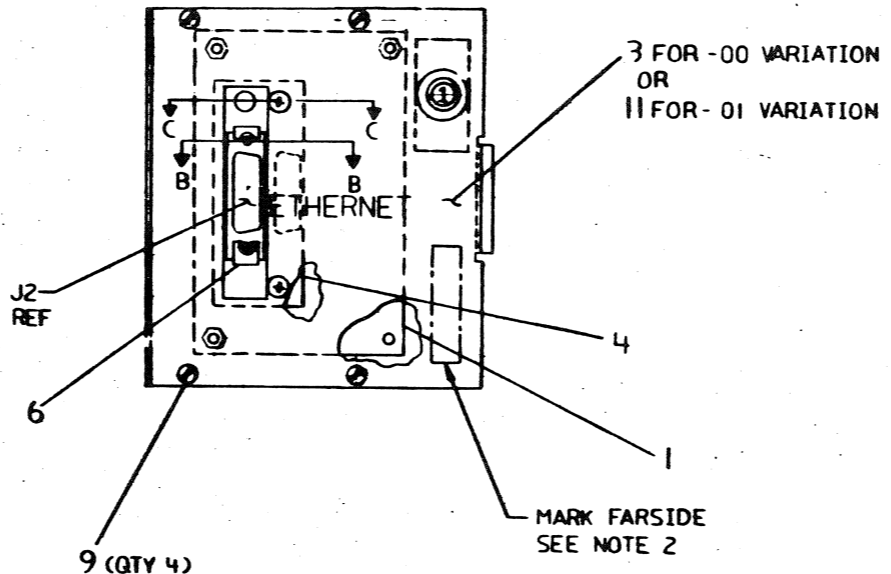
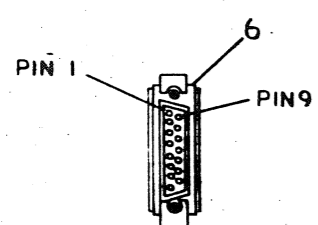
SECTION B-B
SCALE: NONE
HARDWARE FOR ABOVE
COMES WITH ITEM 6
2 PLACES



SECTION C-C
SCALE: 2/1



VIEW A-A
LOCATION OF SOLDERING
POINTS



CAUTION: SEE OFF SHEET PARTS LIST
K-PL-7018799-0-DBP (Z448K)

DATE	REV	ECO NUMBER	BY	CHKD
10/1/82	1	7018799-TW001	T. GARDNER	
10/1/82	2	7018799-TW002	R. GRAHAM	
10/1/82	3	7018799-TW003	D. GARDNER	
10/1/82	4	7018799-TW004	R. GRAHAM	

DESCRIPTION		DRAWING NO.		PART NO.		ITEM NO.	
UNLESS OTHERWISE SPECIFIED DIMENSIONS ARE IN INCHES AND THE FOLLOWING TOLERANCES APPLY (PER DEC STD 114)							
INCHES TOLERANCES		ANGLES ± 0° 30'		APPLICABLE DIMENSION RANGE		DIMENSION RANGE IN INCHES	
X = ± .1		SURFACE QUALITY		CHECK ONE		OVER 0 TO 0.2	
XX = ± .02		✓		✓		OVER 0.2 TO 0.4	
XXX = ± .01						OVER 0.4 TO 0.6	
QUANTITY & VARIATION		THIRD ANGLE PROJECTION		DATE		TITLE	
		DO NOT SCALE DRAWING		3 JUN 82		UNA BULKHEAD ASSY	
REMOVE BURRS AND BREAK SHARP CORNERS		DATE		11/1/82		DOCUMENT NUMBER	
MATERIAL		DATE		11/1/82		D AD 7018799-0-0	
SEE PARTS LIST		DATE		11/1/82		REV C	
FINISH		DATE		11/1/82		SCALE 1/1	
		DATE		11/1/82		SHEET 1 OF 1	

NRHA#6AUTOMATED BY PRTLST.4Q(50)

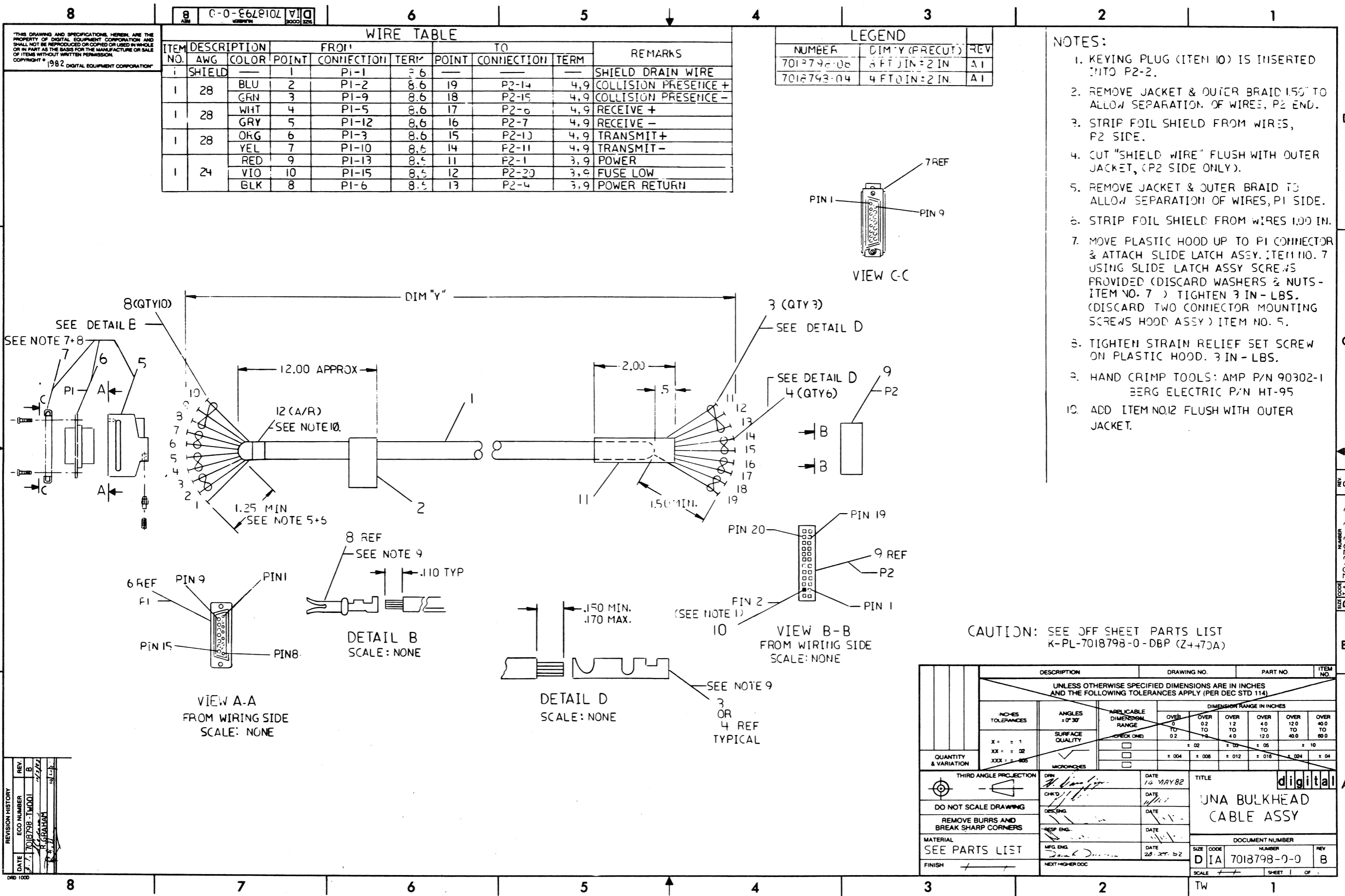
PARTS LIST

SHEET A1 0

LINE	ITEM	DOCUMENT NUMBER	PART NUMBER	DESCRIPTION	QUANTITY PER VARIATION	
					00	01
1	1	D-UA-5415552-0-0	5415552-00	UNA BULKHEAD	1	1
2	2	B-IA-7018801-0-0	7018801-00	JUMPER WIRE ASSY.	1	1
3	3	D-IA-7426404-09-0	7426404-09	PANEL,QUAD (D-IA)	1	-
4	4	C-IA-7427299-0-0	7427299-01	PLATE,CONNECTOR MTG	1	1
5	5		1210242-01	CKT BKR 1.0 A 32V 1P THERMAL	1	1
6	6		1218489-00	CONN,D SUB 15PIN LATCH KIT	1	1
7	7		9009984-00	SCREW,SEMS PAN PHIL	6-	6
8	8		1110864-00	LED 2MCD@10MA	1	1
9	9		1219534-01	SCREW, CAPTV SLOT	4-	-
10	10		1220350-01	CONN,D SUB 15SKT ASSY STR TIN PL	1	1
11	11	E-IA-7427750-0-0	7427750-01	PLATE,BULKHEAD	-	1

REVISION HISTORY			BASIC PART NO: 7018799			DRN: R.J. RILEY			DATE: 16-NOV-82			D I G I T A L		
ENG	ECO NUMBER	REV	SECTION A OF A	CHK'D: R.J. RILEY	DATE: 16-NOV-82	TITLE PARTS LIST			UNA BULKHEAD ASSY					
RG	INITIAL 7018799-TW001	A B	SECTION. VARIATION INDEX [A] 00,01	DES.ENG.: R. GRAHAM	DATE: 16-NOV-82	DOCUMENT NUMBER								
			[B]	RESP.ENG.: R. GRAHAM	DATE: 16-NOV-82	SIZE	CODE	NUMBER	REV					
			[C]	MFG.ENG.: D. DUNCAN	DATE: 16-NOV-82	K	PL	7018799-0-DBP	B					
			[D]	ASSEMBLY NUMBER: D-AD-7018799-0-0	TOP DOCUMENT NUMBER: B-DD-DEUNA-0-0	FILE NAME: Z4481B.PLS			EDIT #					
			[E]						12					
			[F]	<p>"THIS DRAWING AND SPECIFICATIONS HEREIN, ARE THE PROPERTY OF DIGITAL EQUIPMENT CORPORATION AND SHALL NOT BE REPRODUCED OR COPIED OR USED IN WHOLE OR IN PART AS THE BASIS FOR THE MANUFACTURE OR SALE OF ITEMS WITHOUT WRITTEN PERMISSION. COPYRIGHT (C) 1984. DIGITAL EQUIPMENT CORPORATION "</p>										

CHK HH A6



AUTOMATED BY PRTLST.3P(44)

PARTS LIST

SHEET #1 OF A1

LINE	ITEM	DOCUMENT NUMBER	PART NUMBER	DESCRIPTION	QUANTITY PER VARIATION	
					04	08
1	1	SEE NOTE	1700347-01	CABLE,RND 08COND 28AWG TWP	48	96
2	2		3616073-00	LABEL,ID W/COPY VERTICAL	1	1
3	3		1210089-06	CONN,P+S 01SKT 28-22AWG .0500D	3	3
4	4		1210089-03	CONN,P+S 01SKT 32-28AWG .0500D	6	6
5	5		1211245-02	CONN,D SUB 15POS HOOD STRAIGHT P	1	1
6	6		1210493-58	CONN,D SUB 15SKT HSG STR	1	1
7	7		1218489-00	CONN,D SUB 15PIN LATCH KIT	1	1
8	8		1210493-45	CONN,D SUB SKT CRIMP 28-24AWG	10	10
9	9		1210918-25	CONN,P+S 24POS(2X12).100CC HSG	1	1
10	10		9009140-00	CONN,P+S POLARIZING PLUG FOR-	1	1
11	11	SEE NOTE	9107252-00	TUBING,SHRINK .375ID EXP	2	2

12 NOTE: ITEMS 1 & 11 ARE IN INCHES

REVISION HISTORY			BASIC PART NO: 7018798			D I G I T A L		
ENG	ECO NUMBER	REV	SECTION A OF A	DRN: R.J. RILEY	DATE: 16-NOV-82	TITLE PARTS LIST		
	INITIAL	A	SECTION VARIATION INDEX	CHK'D: R.J. RILEY	DATE: 16-NOV-82	UNA BULKHEAD CABLE ASSY		
			[A] 04,08			DOCUMENT NUMBER		
			[B]	DES.ENG.: R. GRAHAM	DATE: 16-NOV-82	SIZE	CODE	NUMBER
			[C]	RESP.ENG.: R. GRAHAM	DATE: 16-NOV-82	K	PL	7018798-0-DBP
			[D]	MFG.ENG.: D. DUNCAN	DATE: 16-NOV-82	FILE NAME:		EDIT
			[E]	ASSEMBLY NUMBER:	TOP DOCUMENT NUMBER:	Z4470A.PLS		6
			[F]	D-IA-7018798-0-0	B-DD-DEUNA-0-0			
<p>"THIS DRAWING AND SPECIFICATIONS HEREIN, ARE THE PROPERTY OF DIGITAL EQUIPMENT CORPORATION AND SHALL NOT BE REPRODUCED OR COPIED OR USED IN WHOLE OR IN PART AS THE BASIS FOR THE MANUFACTURE OR SALE OF ITEMS WITHOUT WRITTEN PERMISSION. COPYRIGHT (C) 1982. DIGITAL EQUIPMENT CORPORATION "</p>								

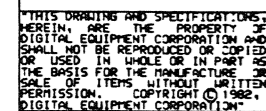
AUTOMATED BY PRTLST.3P(44)

P A R T S L I S T

SHEET #1 OF A1

LINE	ITEM	DOCUMENT NUMBER	PART NUMBER	DESCRIPTION	QTY PER VARIATION 00	REFERENCE DESIGNATOR
1	1	D-MD-5015551-0-0	5015551-00	DRILL AND ETCH	1	
2	2		1001776-00	1 MFD 35V 10% S.TANT	2	C3,C6
3	3		1002781-00	100 MFD 25V +75-10% AL EL	1	C1
4	4		1005784-00	.01 MFD 100V 200V 10% MYL	1	C4
5	5		1013466-22	.1 MFD 50V +80-20% Z5U CER	1	C5
6	6		1018584-01	560 MFD 20V+100-20% AL EL	1	C2
7	7		1100114-00	D 664 QS\75PCB PIV= 25V SP	1	D3
8	8		1110864-00	LED 2MCD@10MA	1	D2
9	9		1114602-00	UES1302 PIV=100V I= 4A	1	D1
10	10		1303312-00	10.0 K .25 W 1.0 % RN55D-F10	1	R1
11	11		1313589-00	1.40 K .25 W 1.0 % RN55D-F10	1	R2
12	12		1319255-10	18.0 1.0 W 5.0 % M.OXIDE	1	R3
13	13	BLANK		*** THIS ITEM IS NOT USED ***	-	
14	14		1218672-00	CONN,D SUB LOCKING POST ASSY.	1	
15	15		1220360-01	CONN,D SUB 15SKT ASSY STRAIGHT P	1	J1
16	16		1520353-01	SCR@ 50V I=8A	1	Q1
17	17	BLANK		*** THIS ITEM IS NOT USED ***	-	
18	18		9000033-02	SPACER,THREADED HEX ALUM 4-4	2	
19	19		9006557-00	NUT,HEX EXT TOOTH LCKWSHR 4-40	1	
20	20		9006735-00	EYELET,FUNNEL 0.0590DX0.187	2	
21	21		9008301-01	SCREW,MACH PAN PHIL 4-	1	
22	22		9009643-02	SCREW,SEMS PAN PHIL 4-	2	
23	23	BLANK		*** THIS ITEM IS NOT USED ***	-	

REVISION HISTORY		BASIC PART NO: 5415552		DRN: P. GROSSE	DATE: 16-JUN-82	D I G I T A L			
ENG: ECO NUMBER	REV	SECTION A OF A	CHK'D: F. GAROFALO	DATE: 16-JUN-82	TITLE PARTS LIST				
INITIAL	A	SECTION VARIATION INDEX	DES.ENG: R. GRAHAM	DATE: 16-JUN-82	SURGE CURRENT LIMITER				
		[A] 00	RESP.ENG.: R. GRAHAM	DATE: 16-JUN-82	DOCUMENT NUMBER				
		[B]	MFG.ENG.: DANA DUNCAN	DATE: 02-DEC-82	SIZE: K	CODE: PL	NUMBER: 5415552-0-DBP	REV: A	
		[C]	ASSEMBLY NUMBER: D-UA-5415552-0-0	TOP DOCUMENT NUMBER: B-DD-5415552-0-0	FILE NAME: Z3925A.PLS		EDIT		
		[D]	THIS DRAWING AND SPECIFICATIONS HEREIN, ARE THE PROPERTY OF DIGITAL EQUIPMENT CORPORATION AND SHALL NOT BE REPRODUCED OR COPIED OR USED IN WHOLE OR IN PART AS THE BASIS FOR THE MANUFACTURE OR SALE OF ITEMS WITHOUT WRITTEN PERMISSION.						
		[E]	COPYRIGHT (C) 1982. DIGITAL EQUIPMENT CORPORATION						
		[F]							
		[G]							
		[H]							
		[I]							
		[J]							
		[K]							
		[L]							
		[M]							
		[N]							

digital

DATE	ENG
03-22-02	RIC
DATE	BOARD
03-22-02	SHER

DATE	03-DEC-82
------	-----------

TITLE:

UNA BULKHEAD SURGE
CURRENT LIMITER

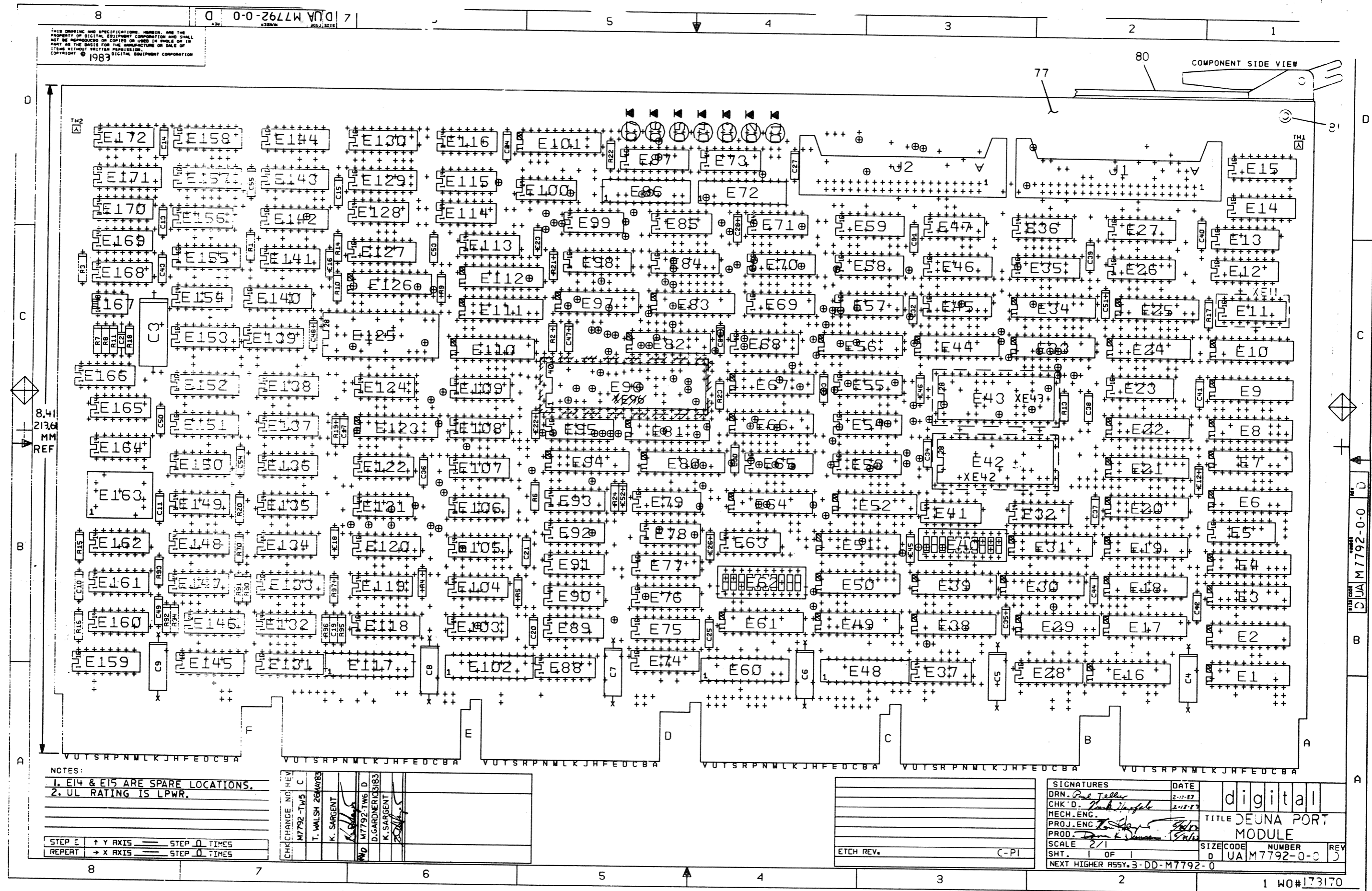
JSKD: <DEGRASSE>UNABL .DRW|03-DEC-82|
FIRST USED ON OPTION/MODEL: DEL

2 07:28 NEXT HIGHER ASSEMB
NA D-1A-5415552-0

SIZE	K
------	---

CODE	NUMBER
CS	5415552-0-0

REV.
A



LINE	ITEM	DOCUMENT NUMBER	PART NUMBER	DESCRIPTION	QTY	PER VARIATION	REFERENCE DESIGNATOR
					00		
1	77	D-MD-5015542-0-0	5015542-00	DRILL & ETCH CUT	1		
2	1		1001610-00	.01 MFD 50V +80-20% Z5U CER	1		C2
3	3		1012084-01	8 MFD 25V +75-10% AL EL	6		C4,C5,C6,C7,C8,C9
4	4		1012784-00	.047 MFD 50V +80-20% CER	46		C10,C11,C12,C13,C14,C15,C16,C17,C18,C19,C20,C21,C22,C23,C24,C25,C26,C27,C28,C29,C30,C31,C32,C33,C34,C35,C36,C37,C38,C39,C40,C41,C42,C43,C44,C45,C46,C47,C48,C49,C50,C51,C52,C53,C54,C55
5	2		1010031-07	1 MFD 50V 10% M.POLYCARB	1		C3
6	5		1112689-00	LED .8MCD@16MA VF=5V	7		D1,D2,D3,D4,D5,D6,D7
7	65		1209941-02	PCB,HEADER 40PIN(2X20).100CC 90D	2		J1,J2
8	19		1211164-06	SW,DIP 10POS/1PST 5VDC100MA F	2		E40,E62
9	79	BLANK		*** THIS ITEM IS NOT USED ***	-		
10	78		1212385-03	SKT,IC 28PIN DIP GOLD SOLD	2		XE42,XE43
11	80		1216988-02	HANDLE,MODULE,HEX TWO EJECTORS	1		
12	15		1300005-01	R NETWORK 13-1K 5.0 % 14PIN	2		E32,E63
13	69		1300229-00	100.0 .25 W 5.0 % CF	7		R6,R9,R10,R13,R19,R21,R22
14	76		1300247-00	120.0 .25 W 5.0 % CF	1		R91
15	68		1300295-00	330.0 .25 W 5.0 % CF	1		R5
16	66		1300365-00	1.0 K .25 W 5.0 % CF	9		R1,R3,R4,R11,R14,R17,R18,R20,R70
17	74		1300479-00	10.0 K .25 W 5.0 % CF	1		R24
18	75		1301322-00	180.0 .25 W 5.0 % CF	1		R90
19	72		1301425-00	300.0 .25 W 5.0 % CF	1		R16
20	71		1301890-00	560.0 .25 W 5.0 % CF	1		R15
21	67		1302388-00	2.0 K .25 W 5.0 % CF	1		R2
22	73		1303114-00	1.0 K .25 W 1.0 % RN55D-F10	1		R23
23	70		1317183-05	487.0 K .25 W 1.0 % RN55D-F10	2		R7,R8
24	60		1613120-00	DELAY= 200NS,10TAPS	1		E159
25	63		1811660-36	OSCILLATOR, XTAL 7.500 MHZ	1		E163

REVISION HISTORY			BASIC PART NO: M7792		DRN: D.SIREEN		DATE: 10-SEP-82		D I G I T A L			
ENG	ECO NUMBER	REV	SECTION A OF A		CHK'D: COSTA L.		DATE: 10-SEP-82		TITLE PARTS LIST			
	INITIAL	A	SECTION VARIATION INDEX		DES.ENG: M.STECKLAIR		DATE: 10-SEP-82		DEUNA PORT MODULE			
TE	M7792-TW002	B	[A] 00		RESP.ENG.: M.STECKLAIR		DATE: 10-SEP-82		DOCUMENT NUMBER			
TE	M7792-TW003	C	[B]		MFG.ENG.: DANA DUNCAN		DATE: 02-DEC-82		SIZE	CODE	NUMBER	REV
TE	M7792-TW004	D	[C]		ASSEMBLY NUMBER:		TOP DOCUMENT NUMBER:		K	PL	M7792-0-DBP	F
RS	M7792-TW005	E	[D]		D-UA-M7792-0-0		B-DD-M7792-0-0		FILE NAME: Z3924F.PLS			
KS	M7792-TW006	F	[E]						EDIT # 20			
			[F]									
			[H]									
			[J]									
			[K]									
			[L]									
			[M]									
			[N]									

"THIS DRAWING AND SPECIFICATIONS HEREIN, ARE THE PROPERTY OF DIGITAL EQUIPMENT CORPORATION AND SHALL NOT BE REPRODUCED OR COPIED OR USED IN WHOLE OR IN PART AS THE BASIS FOR THE MANUFACTURE OR SALE OF ITEMS WITHOUT WRITTEN PERMISSION. COPYRIGHT (C) 1983. DIGITAL EQUIPMENT CORPORATION "

AUTOMATED BY PRTLST.4Q(50)

P A R T S L I S T

SHEET A2 OF A3

LINE	ITEM	DOCUMENT NUMBER	PART NUMBER	DESCRIPTION	QTY 00	PER VARIATION	REFERENCE DESIGNATOR
26	61		1909705-00	DEC 8881 NAND GATE-QUAD 2IN 0	1		E160
27	45		1909712-00	DEC 8242 COMPARATOR-4BIT N,	1		E104
28	56		1910532-00	74S00 NAND GATE-QUAD 2IN	1		E149
29	46		1915019-00	74S38 NAND BUFFER-QUAD 2IN	1		E105
30	42		1910534-00	74S04 INVERTER GATE-HEX 1I	1		E100
31	36		1910544-00	74S74 FF-D DUAL,EDGE TRIGG	7		E92,E124,E136,E137,E139,E148,
						CONT	E166
32	62		1910878-00	7427 NOR GATE-TRIPLE 3IN	1		E161
33	31		1910951-00	9602 ONE SHOT-DUAL	1		E79
34	17		1911573-00	74S280 PARITY GEN/CHKR,9BIT	2		E36,E47
35	50		1911579-00	8641 TRANSCEIVER,BUS,QUA	2		E118,E120
36	29		1911676-00	74S139 DECODER-DUAL TWO-INP	1		E74
37	64		1911944-00	555CN TIMER,FUNCT.BLOCK	1		E167
38	55		1912389-00	74S08 AND GATE-QUAD 2IN,PO	1		E141
39	13		1912647-00	LS257 MUX 1 OF 2 (QUAD)	4		E23,E45,E54,E65
40	10		1912697-00	LS174 FF-D HEX W/CLEAR	3		E5,E143,E144
41	33		1912799-00	LS00 NAND-GATE-QUAD 2IN,P	4		E85,E88,E115,E169
42	34		1912801-00	LS02 NOR-GATE-QUAD 2IN	3		E89,E106,E164
43	35		1912803-00	LS04 INVERTER GATE,HEX	3		E90,E107,E134
44	26		1912805-00	LS08 AND GATE-QUAD 2IN,PO	6		E71,E113,E119,E121,E132,E135
45	28		1912807-00	LS10 NAND GATE-TRIPLE 3IN	2		E73,E108
46	48		1912810-00	LS20 NAND GATE-DUAL 4IN	2		E114,E122
47	44		1912811-00	LS21 AND GATE-DUAL 4IN,PO	1		E103
48	49		1912813-00	LS27 NOR GATE-TRIPLE 3IN	1		E116
49	30		1912816-00	LS32 OR GATE-QUAD 2IN,POS	4		E78,E91,E109,E150
50	20		1912824-00	LS74 FF-D DUAL,EDGE TRIGG	7		E41,E99,E128,E138,E146,E147,E168
51	25		1912842-00	LS138 DECODER-THREE INPUT,	5		E58,E75,E76,E77,E140
52	53		1912845-00	LS153 MUX 1 OF 4 (DUAL)	7		E129,E130,E153,E155,E157,E158,
						CONT	E171
53	38		1912848-00	LS158 MUX 1 OF 2 (QUAD)	1		E95
54	57		1912851-00	LS169 COUNTER,SYNCH. UP/DO	1		E151
55	12		1912854-00	LS193 COUNTER,SYNCHR,4BIT,	14		E12,E13,E26,E27,E35,E46,E55,E57,
						CONT	E59,E68,E69,E70,E127,E142
56	16		1912863-00	LS273 FF-D OCTAL W/CLEAR	2		E34,E83
57	58		1912864-00	LS279 LATCH,QUAD-S-R	1		E152
58	52		1913462-00	74S240 OCTAL BUFFER,INVERTI	1		E126
59	40		1913671-00	74S374 FF-D,OCTAL,TR1 STATE	2		E97,E123
60	24		1913888-00	DC 102A EQUALS CHECKER 8BIT	1		E51
61	18		1914085-00	74S260 NOR GATE-DUAL,POS	1		E37
62	6		1914214-00	LS374 FF-D OCTAL EDGE TRIG	8		E1,E6,E16,E17,E20,E22,E24,E29
63	54		1914438-00	DC 013 UNIBUS INTERRUPT-BIP	2		E131,E145
64	59		1914451-00	LS393 COUNTER,BINARY,4BIT	6		E154,E156,E162,E165,E170,E172
65	32		1914768-00	C 67401J MEMORY FIFO,SERIAL	2		E84,E87
66	14		1914845-00	2918 FF-D QUAD TRI-STATE	1		E28
67	9		1915193-00	LS244 DRIVER,LINE,OCTAL,T	21		E4,E8,E9,E10,E18,E19,E21,E25,
						CONT	E30,E31,E33,E38,E49,E52,E61,E64,
						CONT	E66,E67,E80,E81,E94
68	8		1915219-00	LS373 FF-D OCTAL-TRANSPARE	2		E3,E7

D	I	G	I	T	A	L	TITLE	SECTION A	OF A	SIZE	CODE	DOCUMENT NUMBER	REV
							DEUNA PORT MODULE			K	PL	M7792-0-DBP	F

AUTOMATED BY PRTLST.4Q(50)

P A R T S L I S T

SHEET A3 OF A3

LINE	ITEM	DOCUMENT NUMBER	PART NUMBER	DESCRIPTION	QTY PER VARIATION 00	REFERENCE DESIGNATOR
69	37		1915932-00	LS125 BUFFER,QUAD BUS	1	E93
70	23		1919015-00	DC 021 BUS TRANSCEIVER,20PI	4	E48,E60,E102,E117
71	39		2117311-01	T-11 MICROPROCESSOR W/LSI-	1	E96
72	27		2118054-03	16K MOS RAM 55NS 2	2	E72,E86
73	22		2119250-00	4KX4 STATIC RAM 55NS	4	E44,E56,E82,E110
74	11		23365A1-00	A1-07	1	E11
75	41		23366A1-00	A1-07	1	E133
76	51		23367A1-00	A1-07	1	E53
77	21		23992A9-00	A9-01	1	E98
78	7		23090C6-00	C6-01	1	E125
79	43		23229E4-00	E4-06	1	E43
80	47		23228E4-00	E4-06	1	E42
81	81		9009000-00	EYELET,ROLLED 0.1210DX0.156	10	
82	82		23119J5-00	J5-01 PAL,LOGIC DRIV	2	E2,E39
83	83		23118J5-00	J5-01 PAL,LOGIC DRIV	1	E50
84	84		23070K3-00	K3-01 PAL,REG, CONT	1	E101
85	85		23037K5-00	K5-01	1	E112
86	86		23038K5-00	K5-01	1	E111
87	87		1215006-02	SKT,IC 16PIN DIP TIN SOLD	1	XE11
88	88		1311422-00	178.0 .25 W 1.0 * RN55D-F10	4	R92,R94,R95,R97
89	89		1305125-00	383.0 .25 W 1.0 * RN55D-F10	2	R93,R96
90	90		9107256-11	TUBING,TEFLON .027ID	A/R	
91	91		9105740-55	WIRE(WRAP) 30AWG KYNAR UL14	A/R	

D	I	G	I	T	A	L	TITLE	SECTION A OF A	SIZE	CODE	DOCUMENT NUMBER	REV
CHK	HH	4					DEUNA PORT MODULE		K	PL	M7792-0-DBP	F