

~~"THE MATERIAL HEREIN IS FOR INFORMATION PURPOSES ONLY AND IS SUBJECT TO CHANGE WITHOUT NOTICE. DIGITAL EQUIPMENT CORPORATION ASSUMES NO RESPONSIBILITY FOR ANY ERRORS WHICH MAY APPEAR HEREIN."~~

\*\*\*\*\* FIELD MAINTENANCE PRINT SET \*\*\*\*\*

## TABLE OF CONTENTS

E-UA-DEUNA-0-0	DEUNA UNIT ASSY
K-PL-DEUNA-0-DBP	DEUNA UNIT ASSY PARTS LIST
D-AD-7018799-0-0	UNA BULKHEAD ASSY
K-PL-7018799-0-DBP	UNA BULKHEAD ASSY PARTS LIST
D-IA-7018798-0-0	UNA CABLE ASSY
K-PL-7018798-0-DBP	UNA CABLE ASSY PARTS LIST

FOR THE FOLLOWING NUMBERS ENCLOSE UA, KPL, CS:

5415552  
M7792  
M7793

## UNIT VARIATIONS

FIELD MAINTENANCE  
PRINT SET  
DEUNA  
DIGITAL EQUIPMENT  
CORPORATION  
MP01378

USED ON OPTION/MODEL

DRN.

R.J. RILEY

DATE \_\_\_\_\_

1/10/83

CHK'D

R.J. RILEY

DATE \_\_\_\_\_

1/10/83

**PROJ. ENG.**

M. STECKLAIR

DATE \_\_\_\_\_

R 1/10/83

**FIELD SERV.**

D. DUNCAN

DATE

1/10/83

SHEET 1 OF 1

digital

"THIS DRAWING AND SPECIFICATIONS, HEREIN, ARE THE PROPERTY OF DIGITAL EQUIPMENT CORPORATION AND SHALL NOT BE REPRODUCED OR COPIED OR USED IN WHOLE OR IN PART AS THE BASIS FOR THE MANUFACTURE OR SALE OF ITEMS WITHOUT WRITTEN PERMISSION.  
COPYRIGHT ©1983 DIGITAL EQUIPMENT CORPORATION."

| TITLE:

| TABLE OF CONTENTS (DEUNA)

SIZE	PRICE
12	1.00
14	1.00
16	1.00
18	1.00
20	1.00
22	1.00
24	1.00
26	1.00
28	1.00
30	1.00
32	1.00
34	1.00
36	1.00
38	1.00
40	1.00
42	1.00
44	1.00
46	1.00
48	1.00
50	1.00
52	1.00
54	1.00
56	1.00
58	1.00
60	1.00
62	1.00
64	1.00
66	1.00
68	1.00
70	1.00
72	1.00
74	1.00
76	1.00
78	1.00
80	1.00
82	1.00
84	1.00
86	1.00
88	1.00
90	1.00
92	1.00
94	1.00
96	1.00
98	1.00
100	1.00

CODE
------

E	NUMBER
---	--------

REV
-----

**I B**

TC

DEUNA-

A

DIST.

---

---

TH

Denkt



AUTOMATED BY PRTLST.4Q(50)

## P A R T S   L I S T

SHEET A1 OF A1

LINE	ITEM	DOCUMENT NUMBER	PART NUMBER	DESCRIPTION	QUANTITY PER VARIATION AA
1	1	E-UA-DEUNA-0-0		OPTION DEUNA	REF
2	2	D-AD-7018799-0-0	7018799-00	UNA BULKHEAD ASSY.	1
3	3	D-UA-M7792-0-0	M7792-00	UNIBUS TO ETHERNET BUS MICROPROC	1
4	4	D-UA-M7793-0-0	M7793-00	M7792 TO ETHERNET BUS LINE UNIT,	1
5	5	SEE NOTE	BC08R-00	I/O CABLE	2
6	7		9006073-03	SCREW,MACH TRUSS PHIL	2
7	8		9007786-00	NUT,U-NUT RETAINER	2
8	9	A-PA-3700713-0-0	3700713-01	PKG COMM OPTION DEUNA-AA	1
9	10	D-IA-7427292-0-DBU	7427292-01	FRAME,I/O DOUBLE QUAD	1
10	12	D-IA-7018798-0-0	7018798-08	UNA BULKHEAD CABLE ASSY.	1
11	13		9906557-00	BAG,POLY RECLOSE 2 MIL THK CLEA	1

12 NOTE: IF BC08R CABLE IS NOT AVAILABLE BC08S-01 MAY BE USED IN ITS PLACE

13 NOTE: ITEMS 7 &amp; 8 TO BE PUT INTO ITEM 13 FOR SHIPPING

14 NOTE: SHIP A COPY OF THE FOLLOWING:E-UA-DEUNA-0-0,EK-DEUNA-UG,B-TC-DEUNA-0-1, WITH THIS OPTION

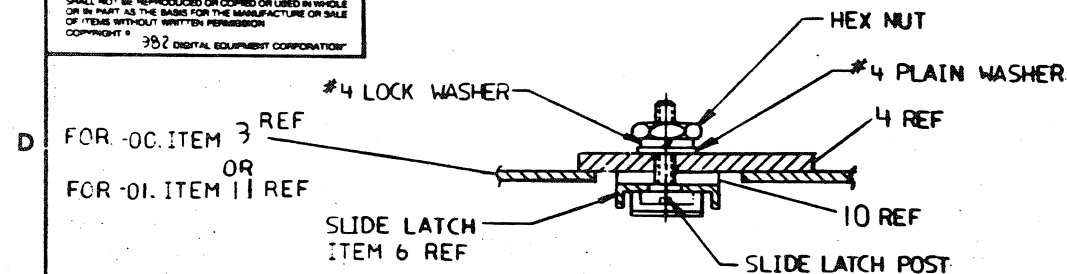
REVISION HISTORY			BASIC PART NO: DEUNA		DRN: R.J. RILEY		DATE: 21-OCT-82		D I G I T A L			
ENG	ECO NUMBER	REV	SECTION A OF A	CHK'D: R.J. RILEY	DATE: 21-OCT-82	TITLE PARTS LIST						
	INITIAL	A	SECTION. VARIATION INDEX			OPTION DEUNA						
			[A] AA									
			[B]	DES.ENG.: M. STECKLAIR	DATE: 21-OCT-82							
			[C]									
			[D]	RESP.ENG.: M. STECKLAIR	DATE: 21-OCT-82	DOCUMENT NUMBER						
			[E]			SIZE: CODE: NUMBER	REV					
			[F]	MFG.ENG.: D. DUNCAN	DATE: 21-OCT-82	K PL	DEUNA-0-DBP	A				
				ASSEMBLY NUMBER:	TOP DOCUMENT NUMBER:	FILE NAME:		EDIT #				
				E-UA-DEUNA-0-0		Z5475A.PLS		8				
"THIS DRAWING AND SPECIFICATIONS HEREIN, ARE THE PROPERTY OF DIGITAL EQUIPMENT CORPORATION AND SHALL NOT BE REPRODUCED OR COPIED OR USED IN WHOLE OR IN PART AS THE BASIS FOR THE MANUFACTURE OR SALE OF ITEMS WITHOUT WRITTEN PERMISSION. COPYRIGHT (C) 1983. DIGITAL EQUIPMENT CORPORATION "												

THIS DRAWING AND SPECIFICATIONS HEREIN ARE THE PROPERTY OF DIGITAL EQUIPMENT CORPORATION AND SHALL NOT BE REPRODUCED OR COPIED OR USED IN WHOLE OR IN PART AS THE BASIS FOR THE MANUFACTURE OR SALE OF ITEMS WITHOUT WRITTEN PERMISSION  
COPYRIGHT © 1982 DIGITAL EQUIPMENT CORPORATION

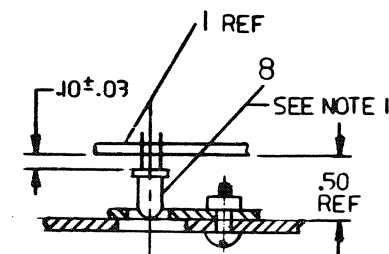
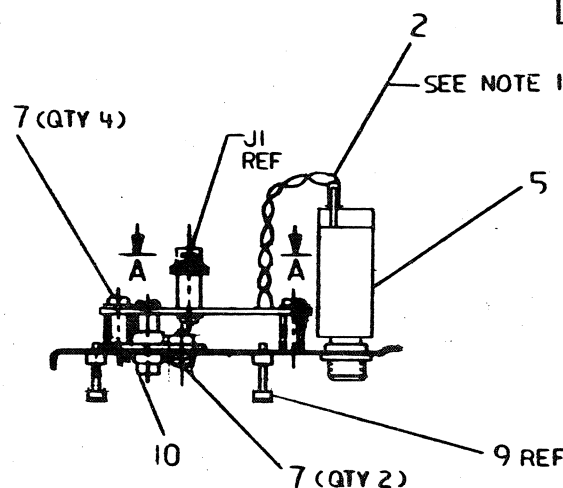
LEGEND		REV
7018799-00	AS SHOWN	BI
7018799-01	USED ON DECISA OPTIONS	BI

# NOTES:

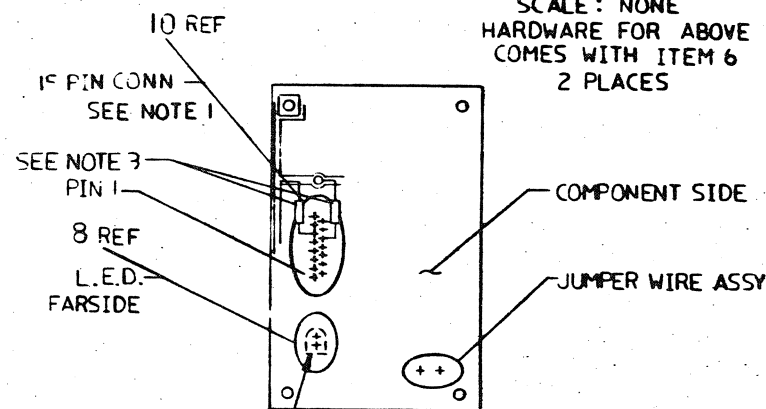
1. VIEW A-A IS FOR LOCATION POINTS FOR ITEMS 2, 8 AND 10.
2. MARK DEC PART NO. & REV LEVEL PER DEC STD 178.
3. ADD CAPACITOR (ITEM 12) FROM PIN 6 TO GROUND ETCH AND FROM PIN 13 TO GROUND ETCH AND SOLDER AT EITHER END.



SECTION B-B  
SCALE: NONE  
HARDWARE FOR ABOVE  
COMES WITH ITEM 6  
2 PLACES

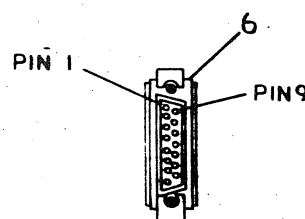


SECTION C-C  
SCALE: 2/1

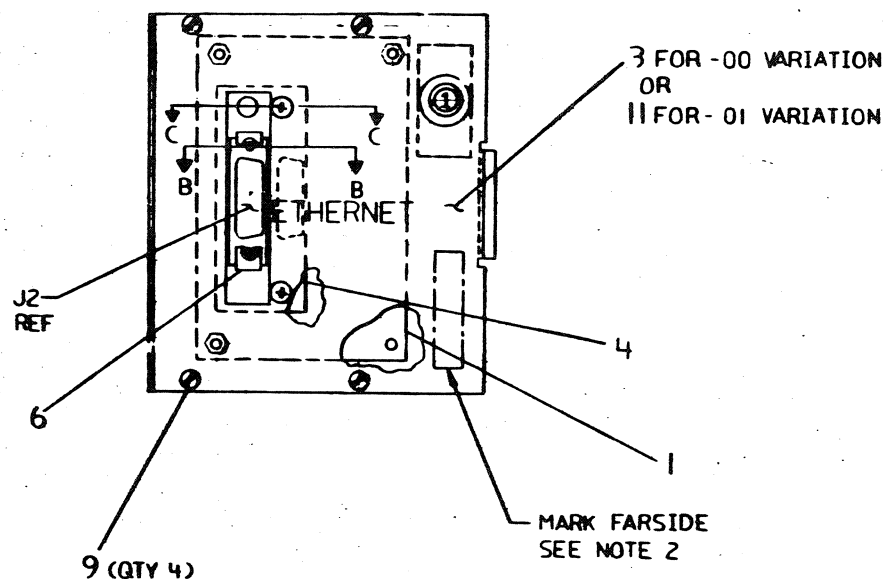


FLAT DENOTES CATHODE

VIEW A-A  
LOCATION OF SOLDERING  
POINTS



DETAIL D-D



CAUTION: SEE OFF SHEET PARTS LIST  
K-PL-7018799-0-DBP (Z448K)

DATE	REV	ECO NUMBER	BY	CHKD	APP'D
10/1/82	1	7018799-TW001	B		
10/1/82	2	7018799-TW001	B		
10/1/82	3	7018799-TW001	B		
10/1/82	4	7018799-TW001	B		
10/1/82	5	7018799-TW001	B		
10/1/82	6	7018799-TW001	B		
10/1/82	7	7018799-TW001	B		
10/1/82	8	7018799-TW001	B		
10/1/82	9	7018799-TW001	B		
10/1/82	10	7018799-TW001	B		
10/1/82	11	7018799-TW001	B		
10/1/82	12	7018799-TW001	B		
10/1/82	13	7018799-TW001	B		
10/1/82	14	7018799-TW001	B		
10/1/82	15	7018799-TW001	B		
10/1/82	16	7018799-TW001	B		
10/1/82	17	7018799-TW001	B		
10/1/82	18	7018799-TW001	B		
10/1/82	19	7018799-TW001	B		
10/1/82	20	7018799-TW001	B		

DESCRIPTION		DRAWING NO.		PART NO.		ITEM NO.	
UNLESS OTHERWISE SPECIFIED DIMENSIONS ARE IN INCHES AND THE FOLLOWING TOLERANCES APPLY (PER DEC STD 114)							
INCHES TOLERANCES		ANGLES ± 0° 30'		APPLICABLE DIMENSION RANGE		DIMENSION RANGE IN INCHES	
X = ± .1		SURFACE QUALITY		RANGE		OVER 0 TO 1.0	
XX = ± .02		MICROINCHES		RANGE		OVER 1.0 TO 4.0	
XXX = ± .01		MICROINCHES		RANGE		OVER 4.0 TO 12.0	
QUANTITY & VARIATION		THIRD ANGLE PROJECTION		DATE		TITLE	
		DO NOT SCALE DRAWING		3 JUN 82		UNA BULKHEAD ASSY	
		REMOVE BURRS AND BREAK SHARP CORNERS		DATE		DOCUMENT NUMBER	
		MATERIAL		DATE		D AD 7018799-0-0	
		SEE PARTS LIST		DATE		REV	
		FINISH		DATE		C	
				DATE		SCALE 1/1	
				DATE		TW 1	



NRHA#6AUTOMATED BY PRTLST.4Q(50)

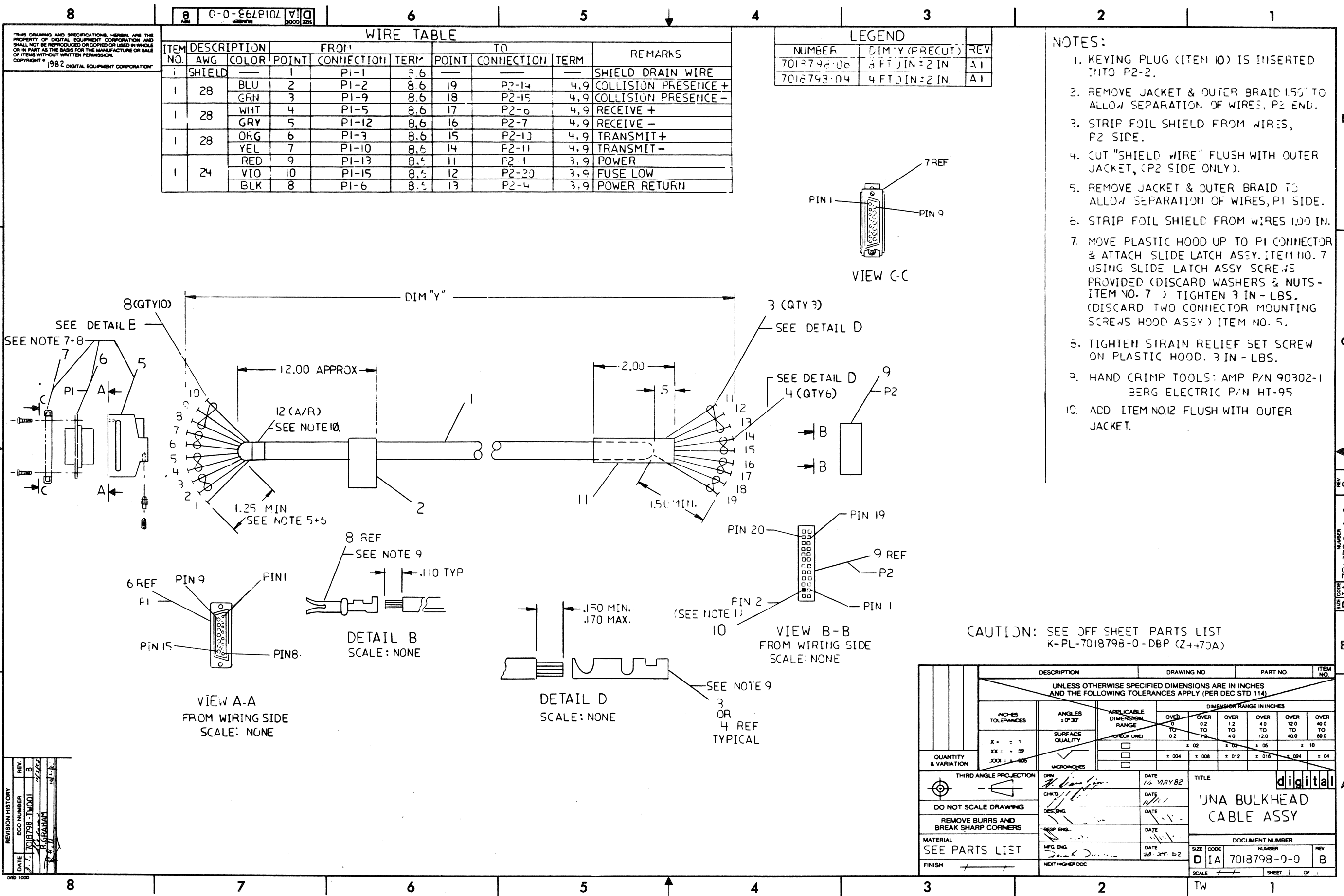
# PARTS LIST

SHEET A1 0

LINE	ITEM	DOCUMENT NUMBER	PART NUMBER	DESCRIPTION	QUANTITY PER VARIATION	
					00	01
1	1	D-UA-5415552-0-0	5415552-00	UNA BULKHEAD	1	1
2	2	B-IA-7018801-0-0	7018801-00	JUMPER WIRE ASSY.	1	1
3	3	D-IA-7426404-09-0	7426404-09	PANEL,QUAD (D-IA)	1	-
4	4	C-IA-7427299-0-0	7427299-01	PLATE,CONNECTOR MTG	1	1
5	5		1210242-01	CKT BKR 1.0 A 32V 1P THERMAL	1	1
6	6		1218489-00	CONN,D SUB 15PIN LATCH KIT	1	1
7	7		9009984-00	SCREW,SEMS PAN PHIL	6-	6
8	8		1110864-00	LED 2MCD@10MA	1	1
9	9		1219534-01	SCREW, CAPTV SLOT	4-	-
10	10		1220350-01	CONN,D SUB 15SKT ASSY STR TIN PL	1	1
11	11	E-IA-7427750-0-0	7427750-01	PLATE,BULKHEAD	-	1

REVISION HISTORY			BASIC PART NO: 7018799			DRN: R.J. RILEY			DATE: 16-NOV-82			D I G I T A L		
ENG	ECO NUMBER	REV	SECTION A OF A	CHK'D: R.J. RILEY	DATE: 16-NOV-82	TITLE PARTS LIST			UNA BULKHEAD ASSY					
RG	INITIAL 7018799-TW001	A B	SECTION. VARIATION INDEX [A] 00,01	DES.ENG.: R. GRAHAM	DATE: 16-NOV-82	DOCUMENT NUMBER								
			[B]	RESP.ENG.: R. GRAHAM	DATE: 16-NOV-82	SIZE	CODE	NUMBER	REV					
			[C]	MFG.ENG.: D. DUNCAN	DATE: 16-NOV-82	K	PL	7018799-0-DBP	B					
			[D]	ASSEMBLY NUMBER: D-AD-7018799-0-0	TOP DOCUMENT NUMBER: B-DD-DEUNA-0-0	FILE NAME: Z4481B.PLS			EDIT #					
			[E]						12					
			[F]	<p>"THIS DRAWING AND SPECIFICATIONS HEREIN, ARE THE PROPERTY OF DIGITAL EQUIPMENT CORPORATION AND SHALL NOT BE REPRODUCED OR COPIED OR USED IN WHOLE OR IN PART AS THE BASIS FOR THE MANUFACTURE OR SALE OF ITEMS WITHOUT WRITTEN PERMISSION. COPYRIGHT (C) 1984. DIGITAL EQUIPMENT CORPORATION "</p>										

CHK HH A6



AUTOMATED BY PRTLST.3P(44)

# PARTS LIST

SHEET #1 OF A1

LINE	ITEM	DOCUMENT NUMBER	PART NUMBER	DESCRIPTION	QUANTITY PER VARIATION	
					04	08
1	1	SEE NOTE	1700347-01	CABLE,RND 08COND 28AWG TWP	48	96
2	2		3616073-00	LABEL,ID W/COPY VERTICAL	1	1
3	3		1210089-06	CONN,P+S 01SKT 28-22AWG .0500D	3	3
4	4		1210089-03	CONN,P+S 01SKT 32-28AWG .0500D	6	6
5	5		1211245-02	CONN,D SUB 15POS HOOD STRAIGHT P	1	1
6	6		1210493-58	CONN,D SUB 15SKT HSG STR	1	1
7	7		1218489-00	CONN,D SUB 15PIN LATCH KIT	1	1
8	8		1210493-45	CONN,D SUB SKT CRIMP 28-24AWG	10	10
9	9		1210918-25	CONN,P+S 24POS(2X12).100CC HSG	1	1
10	10		9009140-00	CONN,P+S POLARIZING PLUG FOR-	1	1
11	11	SEE NOTE	9107252-00	TUBING,SHRINK .375ID EXP	2	2

12 NOTE: ITEMS 1 & 11 ARE IN INCHES

REVISION HISTORY		BASIC PART NO: 7018798		DRN: R.J. RILEY		DATE: 16-NOV-82		D I G I T A L	
ENG:	ECO NUMBER	REV	SECTION A OF A	CHK'D:	R.J. RILEY	DATE:	16-NOV-82	TITLE PARTS LIST	
	INITIAL	A	SECTION VARIATION INDEX					UNA BULKHEAD CABLE ASSY	
			[A] 04,08						
			[B]	DES.ENG.:	R. GRAHAM	DATE:	16-NOV-82		
			[C]						
			[D]	RESP.ENG.:	R. GRAHAM	DATE:	16-NOV-82	DOCUMENT NUMBER	
			[E]						
			[F]	MFG.ENG.:	D. DUNCAN	DATE:	16-NOV-82	SIZE:CODE: NUMBER	REV
				ASSEMBLY NUMBER:	D-IA-7018798-0-0	TOP DOCUMENT NUMBER:	B-DD-DEUNA-0-0	FILE NAME:	EDIT
								Z4470A.PLS	6

"THIS DRAWING AND SPECIFICATIONS HEREIN, ARE THE PROPERTY OF DIGITAL EQUIPMENT CORPORATION AND SHALL NOT BE REPRODUCED OR COPIED OR USED IN WHOLE OR IN PART AS THE BASIS FOR THE MANUFACTURE OR SALE OF ITEMS WITHOUT WRITTEN PERMISSION. COPYRIGHT (C) 1982. DIGITAL EQUIPMENT CORPORATION "

THIS DRAWING AND SPECIFICATIONS, GENERAL AND THE PROPERTY OF THE DRAWING COMPANY AND WILL NOT BE REPRODUCED OR COPIED IN WHOLE OR IN PART WITHOUT THE WRITTEN PERMISSION OF THE DRAWING COMPANY.

0-0-25552-0-0

7

6

5

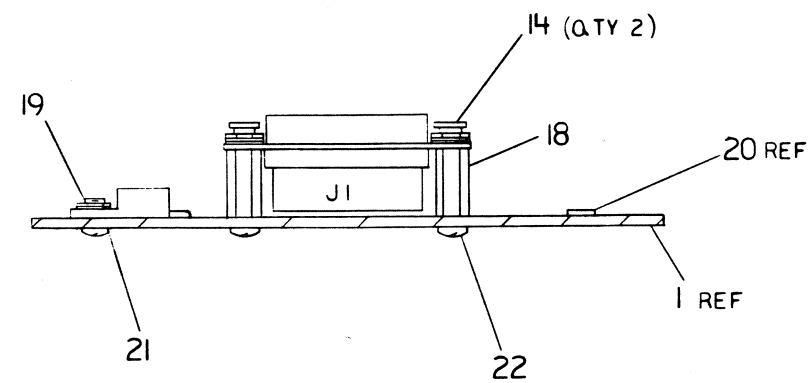
4

3

2

1

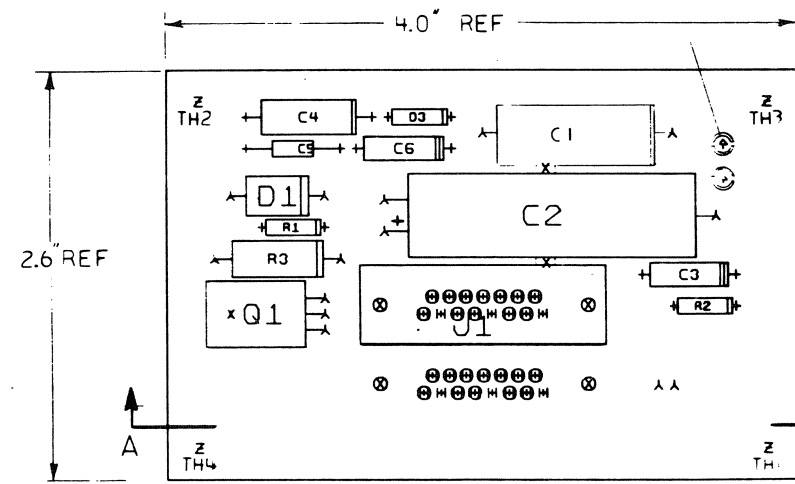
COMPONENT SIDE VIEW



VIEW A-A  
SCALE 2/1



20 2 PLACES



NOTES:

1. BD UL REQUIREMENT IS 94V0

STEP E	Y AXIS	STEP	TIMES
REPEAT	X AXIS	STEP	TIMES

CHANGE NO	REV

ETCH REV. A

SIGNATURES	DATE	digital
DRN. <i>P. J. [Signature]</i>	0-0-25552-0-0	
CHK'D. <i>P. J. [Signature]</i>	0-0-25552-0-0	TITLE SURGE CURRENT LIMITER
RECH. ENG. <i>P. J. [Signature]</i>	0-0-25552-0-0	
PROJ. ENG. <i>P. J. [Signature]</i>	0-0-25552-0-0	SIZE CODE NUMBER D UA 5415552-0-0 A
PROD. <i>P. J. [Signature]</i>	0-0-25552-0-0	
SCALE 2/1		REV
SHT. 1 OF 1		
NEXT HIGHER ASSY. B DD 5415552-0		

8

7

6

5

4

3

2

1

WO #10548A

AUTOMATED BY PRTLST.3P(44)

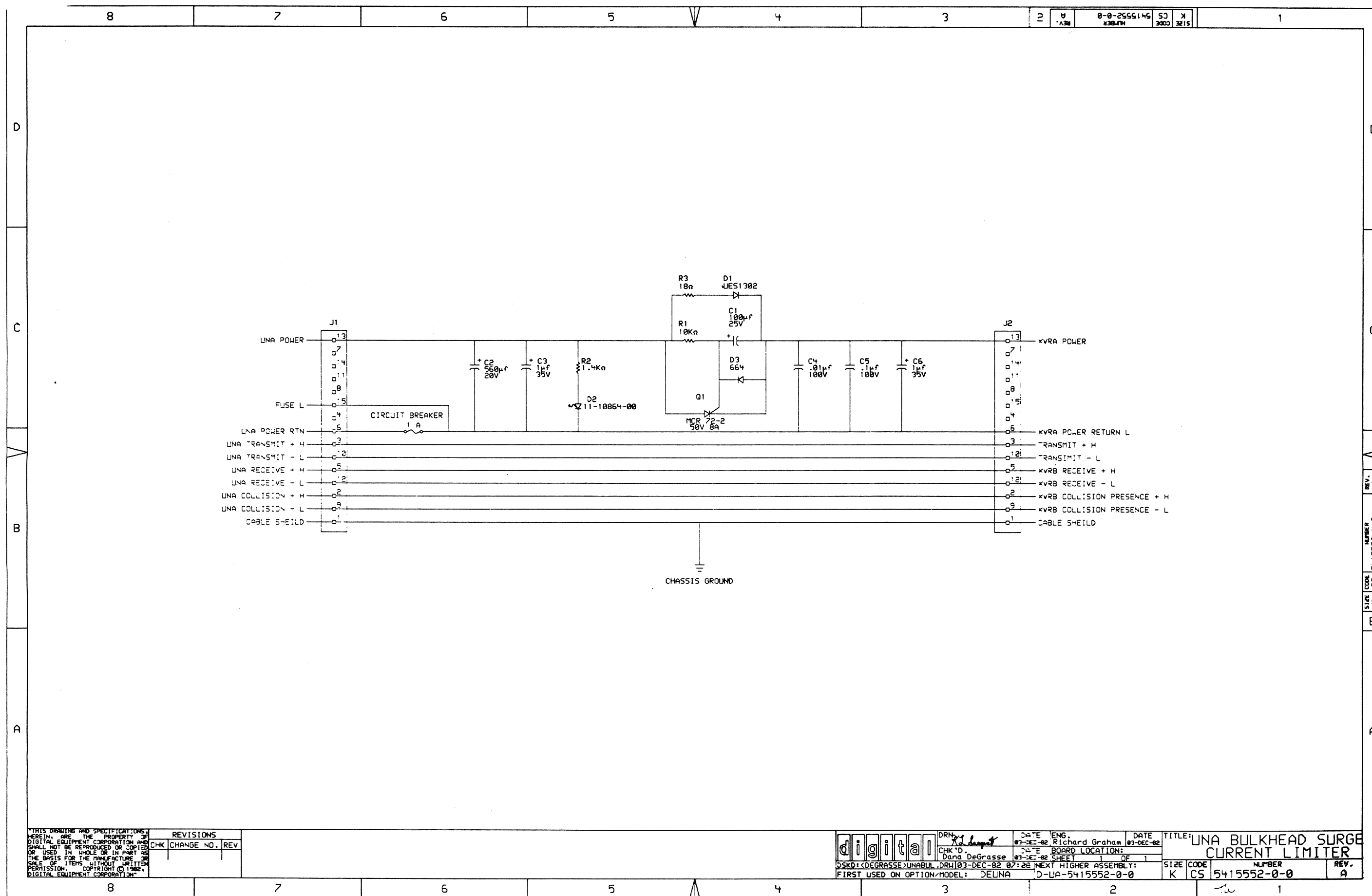
## P A R T S   L I S T

SHEET #1 OF A1

LINE	ITEM	DOCUMENT NUMBER	PART NUMBER	DESCRIPTION	QTY PER VARIATION 00	REFERENCE DESIGNATOR
1	1	D-MD-5015551-0-0	5015551-00	DRILL AND ETCH	1	
2	2		1001776-00	1 MFD 35V 10% S.TANT	2	C3,C6
3	3		1002781-00	100 MFD 25V +75-10% AL EL	1	C1
4	4		1005784-00	.01 MFD 100V 200V 10% MYL	1	C4
5	5		1013466-22	.1 MFD 50V +80-20% ZSU CER	1	C5
6	6		1018584-01	560 MFD 20V+100-20% AL EL	1	C2
7	7		1100114-00	D 664 QS\75PCB PIV= 25V SP	1	D3
8	8		1110864-00	LED 2MCD@10MA	1	D2
9	9		1114602-00	UES1302 PIV=100V I= 4A	1	D1
10	10		1303312-00	10.0 K .25 W 1.0 % RN55D-F10	1	R1
11	11		1313589-00	1.40 K .25 W 1.0 % RN55D-F10	1	R2
12	12		1319255-10	18.0 1.0 W 5.0 % M.OXIDE	1	R3
13	13	BLANK		*** THIS ITEM IS NOT USED ***	-	
14	14		1218672-00	CONN,D SUB LOCKING POST ASSY.	1	
15	15		1220360-01	CONN,D SUB 15SKT ASSY STRAIGHT P	1	J1
16	16		1520353-01	SCR@ 50V I=8A	1	Q1
17	17	BLANK		*** THIS ITEM IS NOT USED ***	-	
18	18		9000033-02	SPACER,THREADED HEX ALUM 4-4	2	
19	19		9006557-00	NUT,HEX EXT TOOTH LCKWSHR 4-40	1	
20	20		9006735-00	EYELET,FUNNEL 0.0590DX0.187	2	
21	21		9008301-01	SCREW,MACH PAN PHIL 4-	1	
22	22		9009643-02	SCREW,SEMS PAN PHIL 4-	2	
23	23	BLANK		*** THIS ITEM IS NOT USED ***	-	

REVISION HISTORY		BASIC PART NO: 5415552		DRN:	P. GROSSE	DATE:	16-JUN-82	D I G I T A L			
ENG:	ECO NUMBER	REV	SECTION A OF A	CHK'D:	F. GAROFALO	DATE:	16-JUN-82	TITLE PARTS LIST			
	INITIAL	A	SECTION VARIATION INDEX					SURGE CURRENT LIMITER			
			[A] 00					DOCUMENT NUMBER			
			[B]	DES.ENG:	R. GRAHAM	DATE:	16-JUN-82	SIZE: CODE: NUMBER			
			[C]					REV			
			[D]	RESP.ENG.:	R. GRAHAM	DATE:	16-JUN-82	K PL 5415552-0-DBP			
			[E]					FILE NAME: Z3925A.PLS			
			[F]	MFG.ENG.:	DANA DUNCAN	DATE:	02-DEC-82	EDIT			
			[G]	ASSEMBLY NUMBER:	D-UA-5415552-0-0	TOP DOCUMENT NUMBER:	B-DD-5415552-0-0				
			[H]								
			[I]								
			[J]								
			[K]								
			[L]								
			[M]								
			[N]								

THIS DRAWING AND SPECIFICATIONS HEREIN, ARE THE PROPERTY OF DIGITAL EQUIPMENT CORPORATION AND SHALL NOT BE REPRODUCED OR COPIED OR USED IN WHOLE OR IN PART AS THE BASIS FOR THE MANUFACTURE OR SALE OF ITEMS WITHOUT WRITTEN PERMISSION.  
COPYRIGHT (C) 1982. DIGITAL EQUIPMENT CORPORATION "



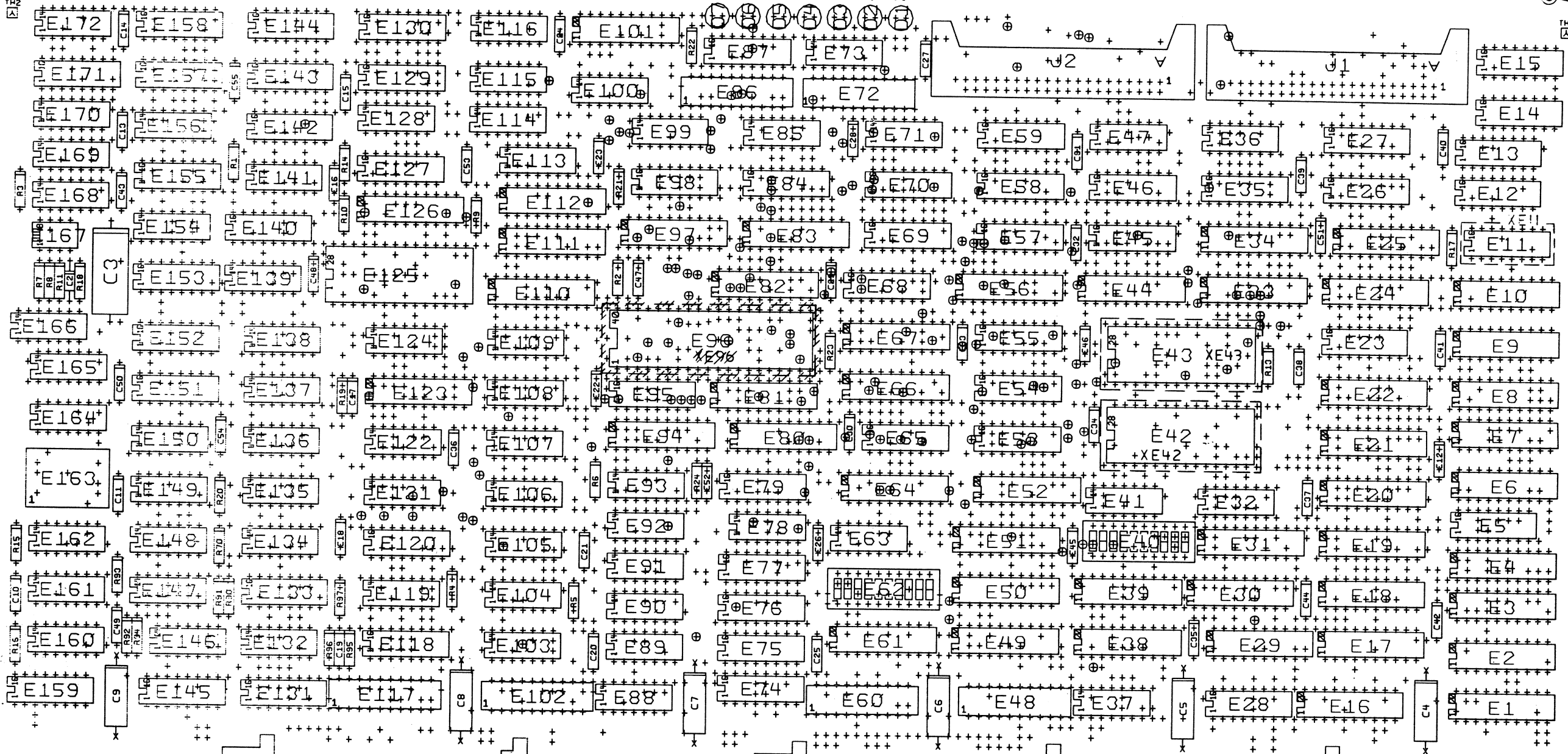
THIS DRAWING AND SPECIFICATIONS  
HEREIN, ARE THE PROPERTY OF  
DIGITAL EQUIPMENT CORPORATION AND  
SHALL NOT BE REPRODUCED OR COPIED  
OR USED IN WHOLE OR IN PART AS  
THE BASIS FOR THE MANUFACTURE OR  
SALE OF ITEMS WITHOUT WRITTEN  
PERMISSION. COPYRIGHT © 1982,  
DIGITAL EQUIPMENT CORPORATION

ALL INFORMATION CONTAINED HEREIN IS UNCLASSIFIED DATE 03-05-2001 BY 60322 RELEASE RMX, SIO

0-0 M7792-0-0

THIS DRAWING AND SPECIFICATIONS HEREIN ARE THE PROPERTY OF DIGITAL EQUIPMENT CORPORATION AND SHALL NOT BE REPRODUCED OR COPIED OR USED IN WHOLE OR IN PART AS THE BASIS FOR THE MANUFACTURE OR SALE OF ITEMS WITHOUT WRITTEN PERMISSION.  
COPYRIGHT © 1983 DIGITAL EQUIPMENT CORPORATION

COMPONENT SIDE VIEW



NOTES:

- 1. E14 & E15 ARE SPARE LOCATIONS.
- 2. UL RATING IS LPWR.

STEP 1 → Y AXIS STEP 0 TIMES  
REPEAT → X AXIS STEP 0 TIMES

CHANGE NO.	REV.	DATE	BY	CHK.
1	1	11/17/83	T. WALSH	264483
2	1	11/17/83	K. SARGENT	
3	1	11/17/83	D. GARDNER	0083
4	1	11/17/83	K. SARGENT	

ETCH REV.	C-PI
-----------	------

SIGNATURES	DATE
DRN. Paul Teller	2-17-83
CHK'D. Mark H. Gable	2-18-83
MECH. ENG.	
PROJ. ENG.	
PROD. Eng. & Services	
SCALE 2/1	
SHT. 1 OF 1	
NEXT HIGHER ASSY. 3-DD-M7792-0	

digital	TITLE DEUNA PORT MODULE
SIZE CODE 0	NUMBER 1
0	UA M7792-0-0
1	WO#173170

LINE	ITEM	DOCUMENT NUMBER	PART NUMBER	DESCRIPTION	QTY PER VARIATION	REFERENCE DESIGNATOR
1	77	D-MD-5015542-0-0	5015542-00	DRILL & ETCH CUT	1	
2	1		1001610-00	.01 MFD 50V +80-20% Z5U CER	1	C2
3	3		1012084-01	8 MFD 25V +75-10% AL EL	6	C4,C5,C6,C7,C8,C9
4	4		1012784-00	.047 MFD 50V +80-20% CER	46	C10,C11,C12,C13,C14,C15,C16,C17,C18,C19,C20,C21,C22,C23,C24,C25,C26,C27,C28,C29,C30,C31,C32,C33,C34,C35,C36,C37,C38,C39,C40,C41,C42,C43,C44,C45,C46,C47,C48,C49,C50,C51,C52,C53,C54,C55
5	2		1010031-07	1 MFD 50V 10% M.POLYCARB	1	C3
6	5		1112689-00	LED .8MCD@16MA VF=5V	7	D1,D2,D3,D4,D5,D6,D7
7	65		1209941-02	PCB,HEADER 40PIN(2X20).100CC 90D	2	J1,J2
8	19		1211164-06	SW,DIP 10POS/1PST 5VDC100MA F	2	E40,E62
9	79	BLANK		*** THIS ITEM IS NOT USED ***	-	
10	78		1212385-03	SKT,IC 28PIN DIP GOLD SOLD	2	XE42,XE43
11	80		1216988-02	HANDLE,MODULE,HEX TWO EJECTORS	1	
12	15		1300005-01	R NETWORK 13-1K 5.0 % 14PIN	2	E32,E63
13	69		1300229-00	100.0 .25 W 5.0 % CF	7	R6,R9,R10,R13,R19,R21,R22
14	76		1300247-00	120.0 .25 W 5.0 % CF	1	R91
15	68		1300295-00	330.0 .25 W 5.0 % CF	1	R5
16	66		1300365-00	1.0 K .25 W 5.0 % CF	9	R1,R3,R4,R11,R14,R17,R18,R20,R70
17	74		1300479-00	10.0 K .25 W 5.0 % CF	1	R24
18	75		1301322-00	180.0 .25 W 5.0 % CF	1	R90
19	72		1301425-00	300.0 .25 W 5.0 % CF	1	R16
20	71		1301890-00	560.0 .25 W 5.0 % CF	1	R15
21	67		1302388-00	2.0 K .25 W 5.0 % CF	1	R2
22	73		1303114-00	1.0 K .25 W 1.0 % RN55D-F10	1	R23
23	70		1317183-05	487.0 K .25 W 1.0 % RN55D-F10	2	R7,R8
24	60		1613120-00	DELAY= 200NS,10TAPS	1	E159
25	63		1811660-36	OSCILLATOR, XTAL 7.500 MHZ	1	E163

REVISION HISTORY		BASIC PART NO: M7792		DRN: D.SIREEN	DATE: 10-SEP-82	D I G I T A L			
ENG	ECO NUMBER	REV	SECTION A OF A	CHK'D: COSTA L.	DATE: 10-SEP-82	TITLE PARTS LIST			
	INITIAL	A	SECTION VARIATION INDEX			DEUNA PORT MODULE			
TE	M7792-TW002	B	[A] 00						
TE	M7792-TW003	C	[B]						
TE	M7792-TW004	D	[C]	DES.ENG: M.STECKLAIR	DATE: 10-SEP-82				
RS	M7792-TW005	E	[D]						
KS	M7792-TW006	F	[E]	RESP.ENG.: M.STECKLAIR	DATE: 10-SEP-82	DOCUMENT NUMBER			
			[F]			SIZE	CODE	NUMBER	REV
			[H]	MFG.ENG.: DANA DUNCAN	DATE: 02-DEC-82	K	PL	M7792-0-DBP	F
			[J]	ASSEMBLY NUMBER:	TOP DOCUMENT NUMBER:	FILE NAME:		EDIT #	
			[K]	D-UA-M7792-0-0	B-DD-M7792-0-0	Z3924F.PLS		20	
			[L]						
			[M]						
			[N]						

"THIS DRAWING AND SPECIFICATIONS HEREIN, ARE THE PROPERTY OF DIGITAL EQUIPMENT CORPORATION AND SHALL NOT BE REPRODUCED OR COPIED OR USED IN WHOLE OR IN PART AS THE BASIS FOR THE MANUFACTURE OR SALE OF ITEMS WITHOUT WRITTEN PERMISSION. COPYRIGHT (C) 1983. DIGITAL EQUIPMENT CORPORATION "



AUTOMATED BY PRTLST.4Q(50)

## P A R T S L I S T

SHEET A2 OF A3

LINE	ITEM	DOCUMENT NUMBER	PART NUMBER	DESCRIPTION	QTY 00	PER VARIATION	REFERENCE DESIGNATOR
26	61		1909705-00	DEC 8881 NAND GATE-QUAD 2IN 0	1		E160
27	45		1909712-00	DEC 8242 COMPARATOR-4BIT N,	1		E104
28	56		1910532-00	74S00 NAND GATE-QUAD 2IN	1		E149
29	46		1915019-00	74S38 NAND BUFFER-QUAD 2IN	1		E105
30	42		1910534-00	74S04 INVERTER GATE-HEX 1I	1		E100
31	36		1910544-00	74S74 FF-D DUAL,EDGE TRIGG	7		E92,E124,E136,E137,E139,E148,
						CONT	E166
32	62		1910878-00	7427 NOR GATE-TRIPLE 3IN	1		E161
33	31		1910951-00	9602 ONE SHOT-DUAL	1		E79
34	17		1911573-00	74S280 PARITY GEN/CHKR,9BIT	2		E36,E47
35	50		1911579-00	8641 TRANSCEIVER,BUS,QUA	2		E118,E120
36	29		1911676-00	74S139 DECODER-DUAL TWO-INP	1		E74
37	64		1911944-00	555CN TIMER,FUNCT.BLOCK	1		E167
38	55		1912389-00	74S08 AND GATE-QUAD 2IN,PO	1		E141
39	13		1912647-00	LS257 MUX 1 OF 2 (QUAD)	4		E23,E45,E54,E65
40	10		1912697-00	LS174 FF-D HEX W/CLEAR	3		E5,E143,E144
41	33		1912799-00	LS00 NAND-GATE-QUAD 2IN,P	4		E85,E88,E115,E169
42	34		1912801-00	LS02 NOR-GATE-QUAD 2IN	3		E89,E106,E164
43	35		1912803-00	LS04 INVERTER GATE,HEX	3		E90,E107,E134
44	26		1912805-00	LS08 AND GATE-QUAD 2IN,PO	6		E71,E113,E119,E121,E132,E135
45	28		1912807-00	LS10 NAND GATE-TRIPLE 3IN	2		E73,E108
46	48		1912810-00	LS20 NAND GATE-DUAL 4IN	2		E114,E122
47	44		1912811-00	LS21 AND GATE-DUAL 4IN,PO	1		E103
48	49		1912813-00	LS27 NOR GATE-TRIPLE 3IN	1		E116
49	30		1912816-00	LS32 OR GATE-QUAD 2IN,POS	4		E78,E91,E109,E150
50	20		1912824-00	LS74 FF-D DUAL,EDGE TRIGG	7		E41,E99,E128,E138,E146,E147,E168
51	25		1912842-00	LS138 DECODER-THREE INPUT,	5		E58,E75,E76,E77,E140
52	53		1912845-00	LS153 MUX 1 OF 4 (DUAL)	7		E129,E130,E153,E155,E157,E158,
						CONT	E171
53	38		1912848-00	LS158 MUX 1 OF 2 (QUAD)	1		E95
54	57		1912851-00	LS169 COUNTER,SYNCH. UP/DO	1		E151
55	12		1912854-00	LS193 COUNTER,SYNCHR,4BIT,	14		E12,E13,E26,E27,E35,E46,E55,E57,
						CONT	E59,E68,E69,E70,E127,E142
56	16		1912863-00	LS273 FF-D OCTAL W/CLEAR	2		E34,E83
57	58		1912864-00	LS279 LATCH,QUAD-S-R	1		E152
58	52		1913462-00	74S240 OCTAL BUFFER,INVERTI	1		E126
59	40		1913671-00	74S374 FF-D,OCTAL,TR1 STATE	2		E97,E123
60	24		1913888-00	DC 102A EQUALS CHECKER 8BIT	1		E51
61	18		1914085-00	74S260 NOR GATE-DUAL,POS	1		E37
62	6		1914214-00	LS374 FF-D OCTAL EDGE TRIG	8		E1,E6,E16,E17,E20,E22,E24,E29
63	54		1914438-00	DC 013 UNIBUS INTERRUPT-BIP	2		E131,E145
64	59		1914451-00	LS393 COUNTER,BINARY,4BIT	6		E154,E156,E162,E165,E170,E172
65	32		1914768-00	C 67401J MEMORY FIFO,SERIAL	2		E84,E87
66	14		1914845-00	2918 FF-D QUAD TRI-STATE	1		E28
67	9		1915193-00	LS244 DRIVER,LINE,OCTAL,T	21		E4,E8,E9,E10,E18,E19,E21,E25,
						CONT	E30,E31,E33,E38,E49,E52,E61,E64,
						CONT	E66,E67,E80,E81,E94
68	8		1915219-00	LS373 FF-D OCTAL-TRANSPARE	2		E3,E7

D	I	G	I	T	A	L	TITLE	SECTION A	OF A	SIZE	CODE	DOCUMENT NUMBER	REV
							DEUNA PORT MODULE			K	PL	M7792-0-DBP	F

AUTOMATED BY PRTLST.4Q(50)

## P A R T S L I S T

SHEET A3 OF A3

LINE	ITEM	DOCUMENT NUMBER	PART NUMBER	DESCRIPTION	QTY PER VARIATION 00	REFERENCE DESIGNATOR
69	37		1915932-00	LS125 BUFFER,QUAD BUS	1	E93
70	23		1919015-00	DC 021 BUS TRANSCEIVER,20PI	4	E48,E60,E102,E117
71	39		2117311-01	T-11 MICROPROCESSOR W/LSI-	1	E96
72	27		2118054-03	16K MOS RAM 55NS 2	2	E72,E86
73	22		2119250-00	4KX4 STATIC RAM 55NS	4	E44,E56,E82,E110
74	11		23365A1-00	A1-07	1	E11
75	41		23366A1-00	A1-07	1	E133
76	51		23367A1-00	A1-07	1	E53
77	21		23992A9-00	A9-01	1	E98
78	7		23090C6-00	C6-01	1	E125
79	43		23229E4-00	E4-06	1	E43
80	47		23228E4-00	E4-06	1	E42
81	81		9009000-00	EYELET,ROLLED 0.1210DX0.156	10	
82	82		23119J5-00	J5-01 PAL,LOGIC DRIV	2	E2,E39
83	83		23118J5-00	J5-01 PAL,LOGIC DRIV	1	E50
84	84		23070K3-00	K3-01 PAL,REG, CONT	1	E101
85	85		23037K5-00	K5-01	1	E112
86	86		23038K5-00	K5-01	1	E111
87	87		1215006-02	SKT,IC 16PIN DIP TIN SOLD	1	XE11
88	88		1311422-00	178.0 .25 W 1.0 * RN55D-F10	4	R92,R94,R95,R97
89	89		1305125-00	383.0 .25 W 1.0 * RN55D-F10	2	R93,R96
90	90		9107256-11	TUBING,TEFLON .027ID	A/R	
91	91		9105740-55	WIRE(WRAP) 30AWG KYNAR UL14	A/R	

D	I	G	I	T	A	L	TITLE	SECTION A OF A	SIZE	CODE	DOCUMENT NUMBER	REV
CHK	HH	4					DEUNA PORT MODULE		K	PL	M7792-0-DBP	F