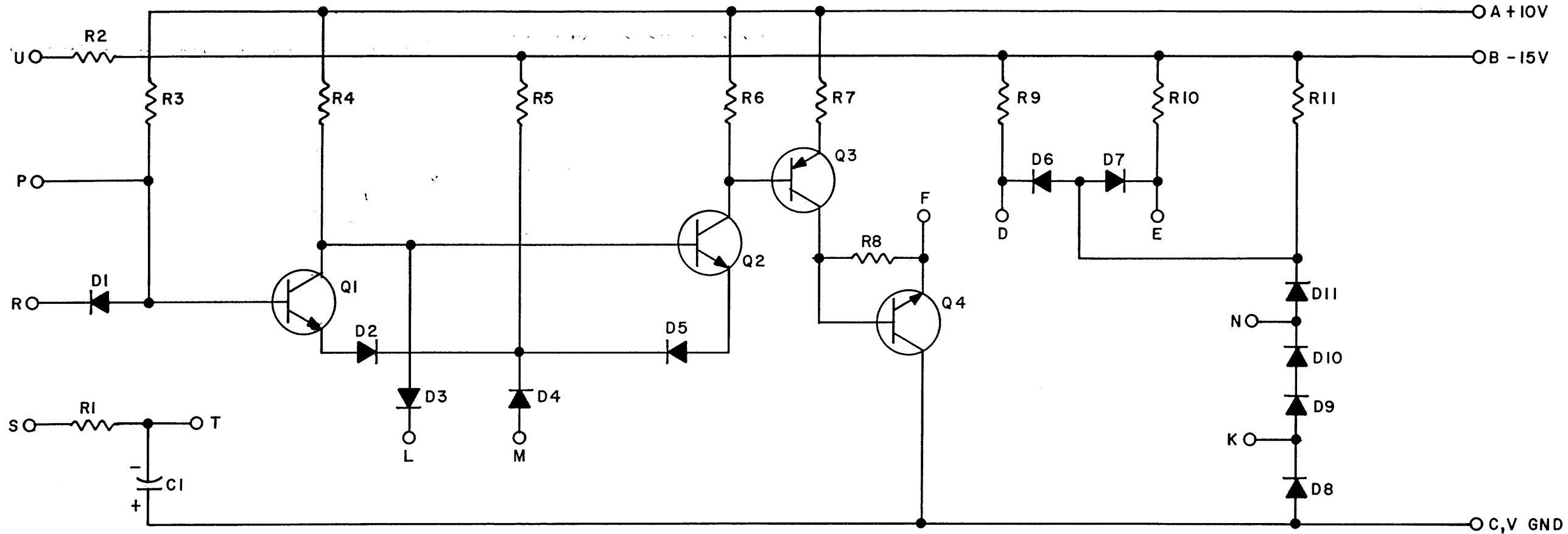


THIS SCHEMATIC IS FURNISHED ONLY FOR TEST AND MAINTENANCE PURPOSES. THE CIRCUITS ARE PROPRIETARY IN-NATURE AND SHOULD BE TREATED ACCORDINGLY. COPYRIGHT 1964 BY DIGITAL EQUIPMENT CORPORATION



Q1, Q2, Q4	TRANSISTOR DEC3009B	1503100
Q3	TRANSISTOR DEC999	1501836
R6, R7, R8, R10, R11	RES. 1.5K 1/4W 5% CC	1300391
R3, R4, R9	RES. 7.5K 1/4W 5% CC	1301422
R2, R5	RES. 4.7K 1/4W 10% CC	1300448
R1	RES. 330 1/4W 10% CC	1300293
D8 - D11	DIODE D662	1100113
D1 - D7	DIODE D664	1100114
C1	CAP. 6.8MFD 35V 20% S.TANT	1000067
PARTS LIST		A-PL-W501-0-0
REFERENCE DESIGNATION	DESCRIPTION	PART NO.



REVISIONS	CHK	CHG NO.	REV.
	DAW	5216	4
	REV. & REDR.	7167	F

DRN. H.W. PORTER	DATE 9-23-64
CHK'D N. PERRYMAN	DATE 9-29-64
ENG. P. SULLIVAN	DATE 9-29-64
PROD. <i>D. Chase</i>	DATE 9-4-68

TRANSISTOR & DIODE CONVERSION CHART			
DEC		EIA	
DEC999		MM999	
DEC3009B		2N3009	
D662		IN645	
D664		IN3606	

digital
EQUIPMENT CORPORATION
MAYNARD, MASSACHUSETTS

TITLE SCHMITT TRIGGER W501			
SIZE B	CODE CS	NUMBER W501-0-1	REV. F
PRINTED CIRCUIT REV.			F